

Risk Management 101

NBNPHA 2023

Chris Davey
Co-operators Insurance
Risk Specialist



Table of Contents:

- What is Risk Management?
- What's in it for me?
- Fire, smoking, emergency exits, fire plan, Smoke detectors
- Water prevention and early detection
- Liability - outside, inside
- Weather related losses, how to be better prepared
- Appliances - maintenance requirements
 - Washer
 - Dryer
 - Dishwasher
 - Fridge
 - Air conditioner

What is Risk Management?

- The process of identifying, assessing, and controlling both financial and physical risk.
- So, what does that mean??
 - Finding dangerous areas on your property that can either hurt someone, cost money to fix, or be lost forever.

What's in it for me?

- It is making your organization a safer place to live, for both the homes and communities
- There will be fewer accidents and injuries will happen.
- You can potentially to avoid catastrophic losses.
- You can reduce amounts of insurance claims, that in turn can help save on their insurance premium.
- It can enable growth within the coop
- It will help budget planning on required maintenance and upkeep.
- It will help the board with prioritizing their property and financial risk needs

What is the cause of your losses?



Fire Safety

- **Fire is FAST! There is little time!**
- In less than 30 seconds a small flame can get completely out of control and turn into a major fire. It only takes minutes for thick black smoke to fill a house. In minutes, a house can be engulfed in flames. Most fires occur in the home when people are asleep. If you wake up to a fire, you won't have time to grab valuables because fire spreads too quickly and the smoke is too thick. There is minimal time to escape, you need to be ready.

Fire - where can it start?

- Smoking related materials
- Kitchen Cooking
- Electrical faults, including the use of extension cords
- Temporary heaters
- Arson



Smoking Related Materials

- Smoking related materials
- Kitchen Cooking
- Electrical faults, including the use of extension cords
- Temporary heaters
- Arson



Kitchen Fires

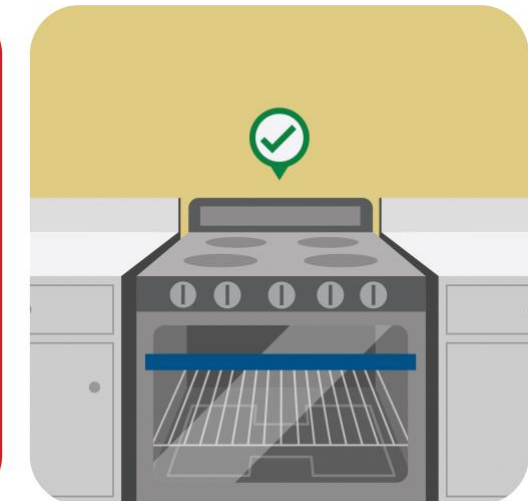
- They can happen fast
- No deep fat frying on a stove top
- Keep the area clean, no grease build up
- Have a serviced fire extinguisher readily available.
- Consider having a fire blanket near the cooking area



Additional best practice tips for Kitchen fire prevention

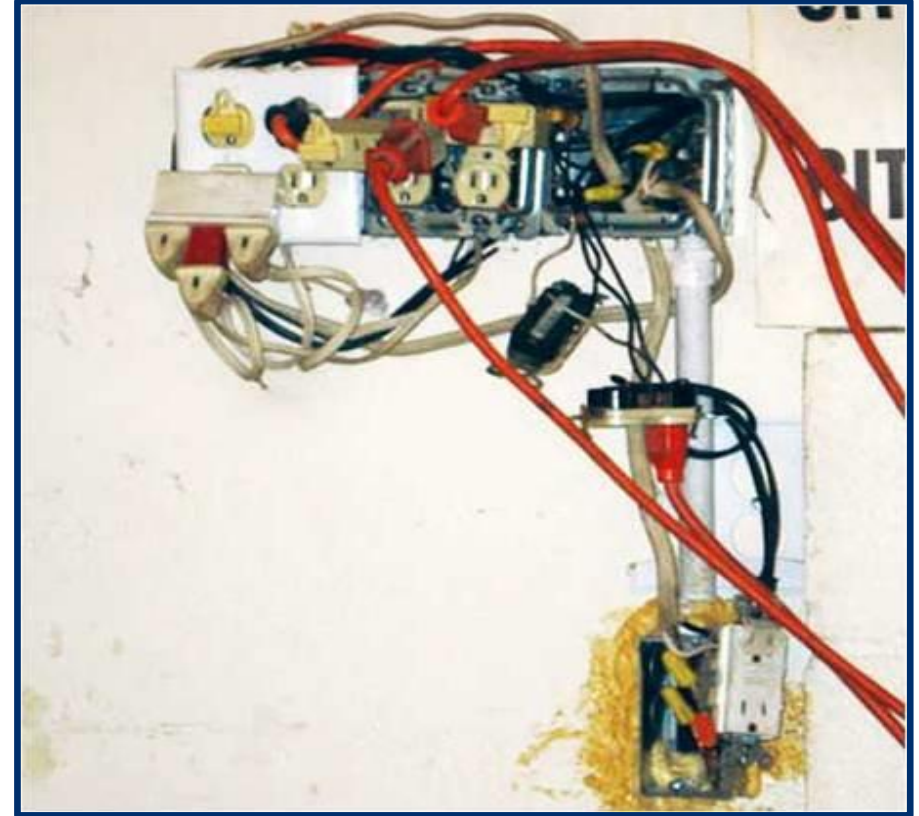


- The use of baking soda is good for small grease fires.
- Use a metal lid, not glass to extinguish the fire.
- Do not store combustible materials on or near a stove top
- Do not leave cooking materials unattended.



Electrical

- Some things are easier seen than others....
- The use of extension cords increases the chance of fire from overloaded wiring as well as stress on the electrical device that is it providing power too.
- Extension cords are meant for temporary use only.



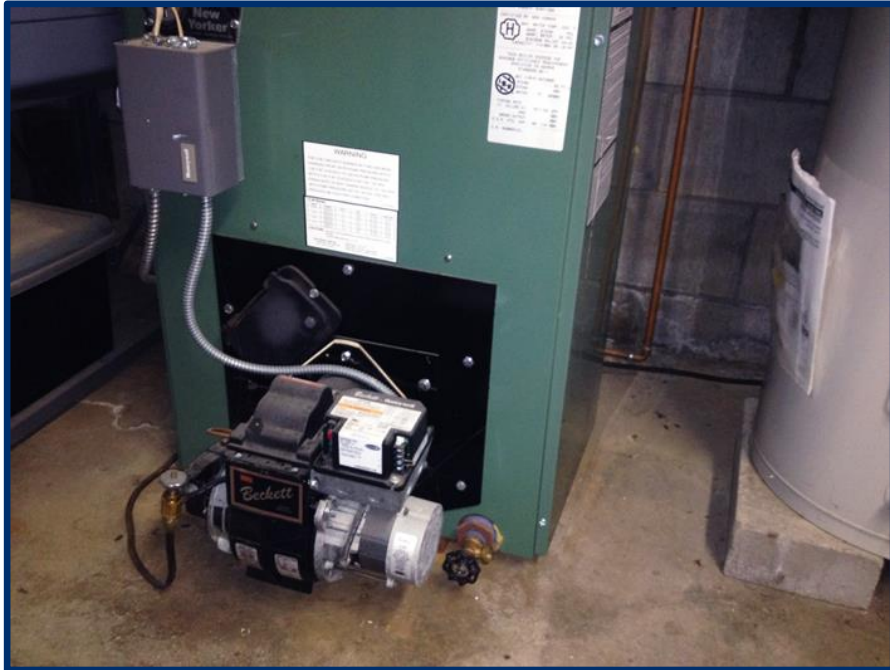
Heating

- Know the difference between a Temporary heat source and a Permanent heat source
- The distance to combustible materials should always be respected
- Keep away from wet environments



Heating

- Types of approved heating systems
- Use approved heating devices only.



Arson

- Good yard lighting can be very effective in reducing any loitering at night times.
- It is important to keep combustibles a safe distance away from the building.
- 50 Feet from any buildings is the suggested distance for any type of combustible storage.
- Examples of combustibles are:
 - Garbage bin
 - Pallet storage
 - Tires
 - Overgrown vegetation



Additional Fire Prevention/Awareness

- Being aware of your surroundings, what can burn, what can spread fire to another area?
 - What can you do to help prevent a fire loss?
 - Report dangerous activities
 - Ensure safe practices are being taken
 - Have fire extinguishers available and accessible
- Discourage the use of wax candles.
 - If they are approved for use, ensure they are never left unattended.
- LED candles are very appealing and safe.
- Consider who would be affected by a fire loss if one occurred? It can affect more than just you; it can affect the lives of many.



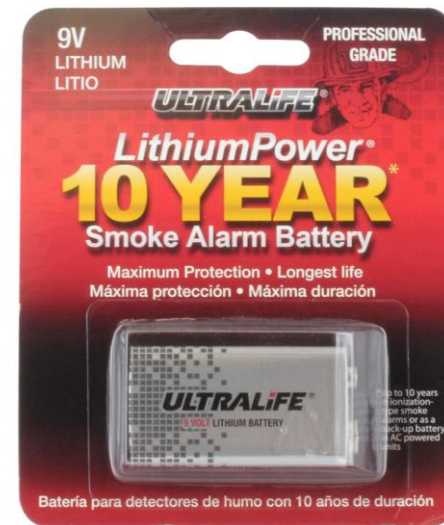
Fire Extinguisher

- Types of fire extinguishers
- How to use
 - PASS
- Indications of a properly charged fire extinguisher
- Where to install a fire extinguisher



Smoke detectors

- All Smoke Detectors have an expiration date - 10 years from manufacturing
- They should be tested monthly, and batteries replaced annually unless they are provided with a lifetime battery
- Installation of the smoke detector should be on or near the ceiling height
- A monitored smoke detector system will help notifying the appropriate people in the event of a fire.



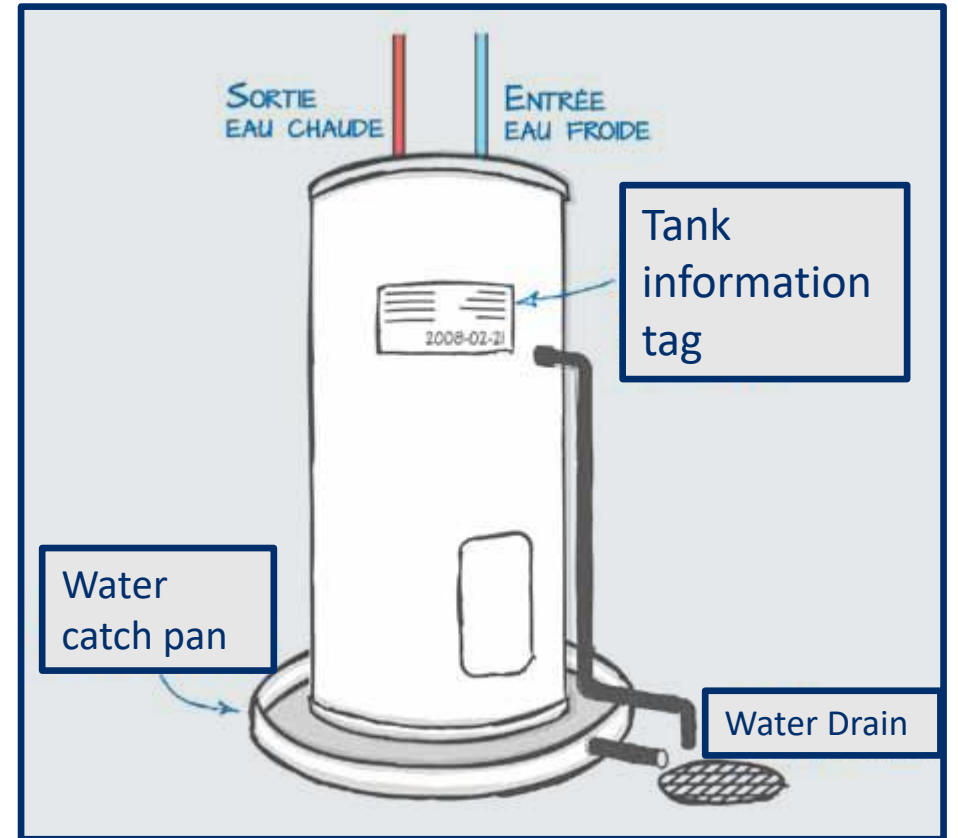
Water Loss Prevention

- Water alarms/Early detection devices
- Can be monitored off site through the central fire panel or just local audio alarm.
- Can help in reducing the severity of water losses.
- **Water losses can occur from:**
 - Overflowing fixtures
 - broken or ruptured water lines
 - frozen water lines
 - hot water tank failures
 - Broken drainage system
 - Water backup.



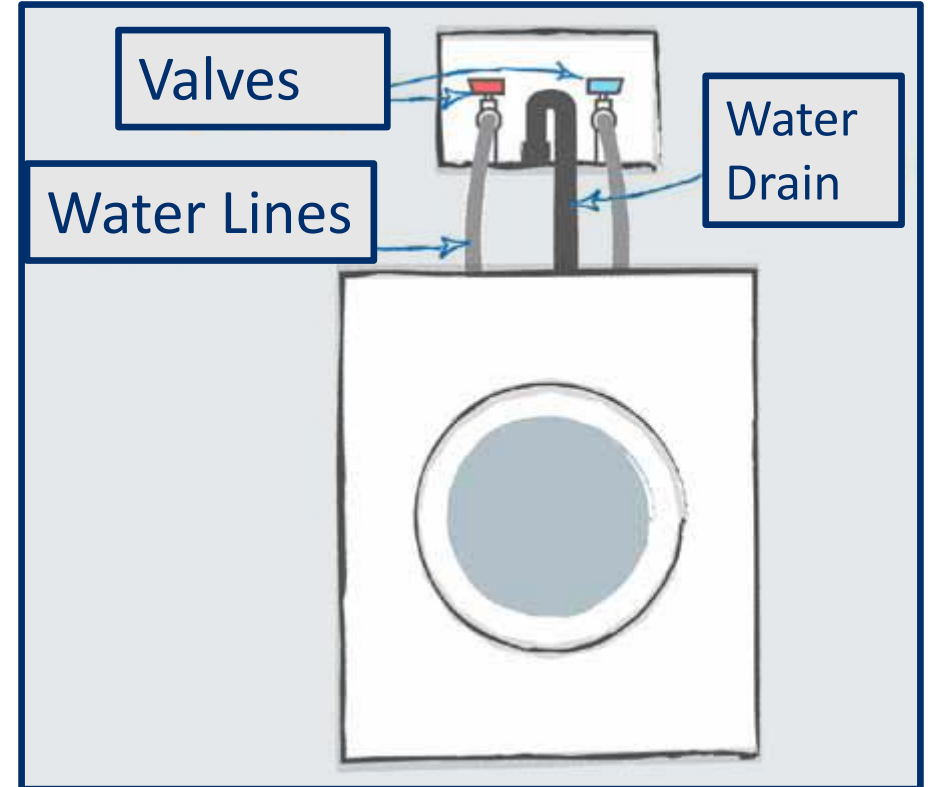
Hot Water Tanks

- Water claims are on the rise and the cost of repair is increasing every year.
- Many water claims can be avoided or minimized by installing early detection devices.
- Consider adding early water detection to areas that are subject to water leaks.
 - Hot water tanks
 - Under sinks
 - Near bathtub or toilet
 - Where water lines extend to unheated areas



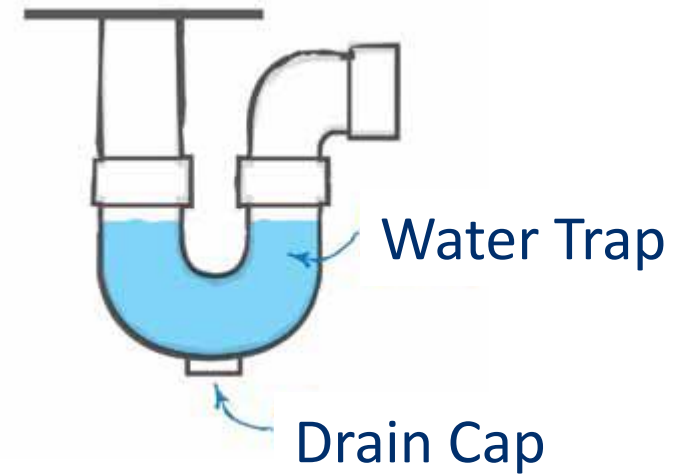
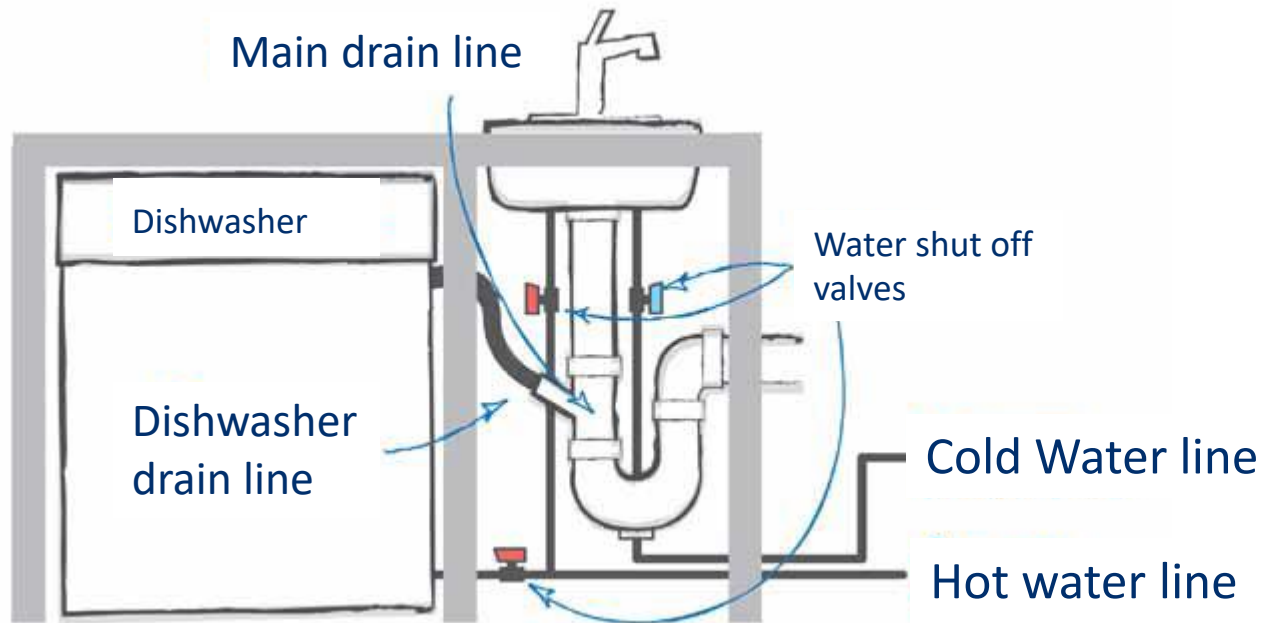
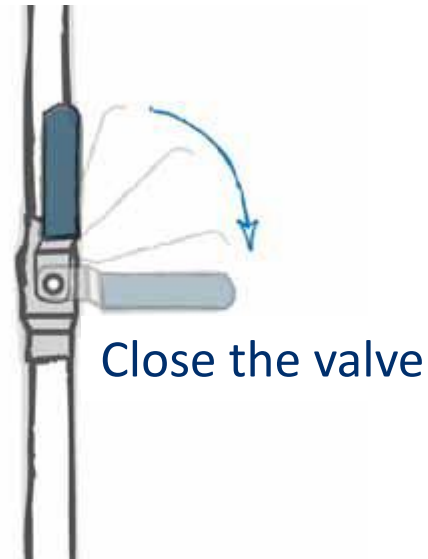
Best Practices for Water

- Install signs where the water valves are located with directions on how to turn off after each use if possible.
- Visually inspect water lines on a regular basis to ensure no defects in the hose has occurred.
- Make sure the drain is in place.



Water and drains

- Drainage concerns
- Locations of valves



Appliances and the hazards they present

- **Clothes Dryer**
 - Dirty/clogged vents
 - Blocked screen
- **Clothes Washing machine**
 - Water lines
 - Drain installed properly
 - Water valves accessibility
- **Window Air conditioner**
 - Poor installation
 - Use of extension cords?
- **Fridges when supplied with water lines**
 - Water lines
 - Use of extension cords?
- **Dish Washer**
 - Water lines
 - Drains



Causes of Fire Loss - Clothes Dryer Venting



Thank you!

