

MORNE PELE CHRISTIAN SCHOOL

MARCH 2022 NEWSLETTER



PROVERBS 19:17 "ONE WHO IS GRACIOUS TO A POOR MAN LENDS TO THE LORD, AND HE WILL REPAY HIM FOR HIS GOOD."



SPREAD THE WORD

"Talk, text, tweet and tag – tell your friends about our charity work. With your help, we can help save more lives and protect the dignity of those in need."

URGENT NEEDS LIST!

- Funds to drill the well water pump with installation
- Funds to construct septic tank and install 1st floor bathrooms

DONATIONS

You Can Donate Online at:

WWW.WORLDOUTREACH.ORG
OR

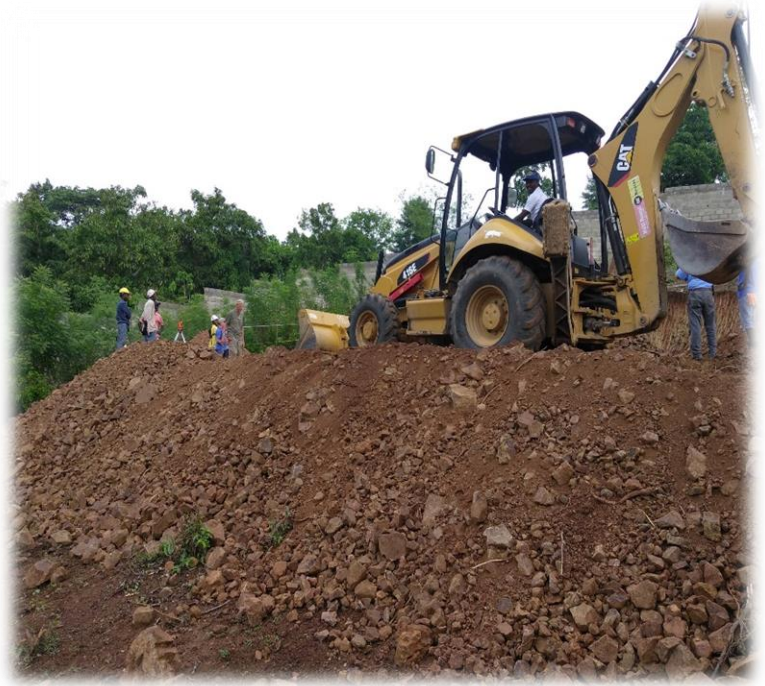
YOU MAY SEND A DONATION VIA CHECK OF ANY AMOUNT BY MAIL

SUPPORT MORNE PELE CHRISTIAN SCHOOL

During the past year MPCS has remained active with its construction efforts. Although it hasn't been easy. With the world-wide pandemic of COVID, and instability in Haiti, we have had to take great precautions. Situations worsened in Haiti with the assassination of president Jovenel. The streets were flooded with protesters and chaos. People burning and rioting in the streets. The shortage of gasoline made transportation impossible. Construction materials are exceedingly expensive.

Yet we are determined to move forward even if it means moving at a slower pace, we keep working when we can. By the grace of God, we were able to complete the first floor of the missionary house. We need to set up a septic tank and install the bathrooms. Once we accomplish this part, we will stop further construction work on the missionary house for now. Because we don't have a working well, we have had to buy water for construction which has been a very expensive process. We built a water container where we are able to store water temporarily. That has helped alleviate some of the cost somewhat as we are able to store rainwater.

Our goal is to dig a well. We contacted a well driller with the proper tools to dig a well deep enough to find water. He is also located in Haiti. He has asked \$6000 US dollars for digging the well 170 to 200 feet including water pump with installation. This is another part of our project to be accomplished. We hope to begin construction on our school building early this summer.



“We request your prayers and financial support as we embark on this momentous project.”

We request your prayers and financial support as we embark on this momentous project. We will also keep you posted with pictures showing you the developments. As you can see, we have a formidable task ahead of us. We trust that with God’s help we will succeed.



GET INVOLVED

- **Make a donation today**
- **Help develop a community in need**
- **Help get the well installed**
- **Support the construction of a classroom**
- **Support the construction of the library**
- **Support the construction of a Computer Room**
- **Donate online or by mail**





US Contact Information

Marlene Felix

1941 NW 185 Terrace
 Miami, FL 33056
 (786) 357-3875
 felixma48@yahoo.com
 ccmp2012@yahoo.com

Contribution can be made to Morne Pele Christian School account #848

By mail: World Outreach Ministries
 P.O. Box B
 Marietta, GA 30061

By phone: Call Toll Free: 1-800-832-WORD (1-800-832-9673)

On-Line: www.WorldOutreach.org/848

Checks should be made out to **World Outreach Ministries**

Click - DONATE – NOW/DONATE ONLINE!

Type in the missionary's name: Marlene Felix - Haiti

