

# RED GRID

ARCHITECTURE & INTERIORS TURKEY



## Civil Design Portfolio

### Red Grid Architects

#1114, 4<sup>th</sup> floor, 1<sup>st</sup> main road,  
KS Town Bengaluru - 560060



[www.redgridarchitects.com](http://www.redgridarchitects.com)



@REDGRID\_ARCHITECTS

8050599438 | 8050727509



## About us

At Redgrid Architects, we are dedicated to creating functional and inspiring spaces. With over 10 years of experience, we excel in delivering high-quality architectural and civil solutions. Our approach is client-focused, ensuring that every project reflects the unique needs and aspirations of our clients. From concept to completion, we transform visions into reality, crafting spaces that are both enduring and personalized.

## One Stop Solution

Endless possibilities in a new home can be overwhelming. We help you choose and incorporate elements that turn your house into your dream home.

We offer a range of services to bring your architectural vision to life:

- Site Preparation and Excavation
- Structural Engineering and Framework
- Exterior Finishes and Treatments
- Landscaping and Outdoor Spaces
- Infrastructure Development
- Renovation and Restoration
- Civil Works and Demolition Services



## **Monika Revankar**

Co-Founder, Redgrid Architects

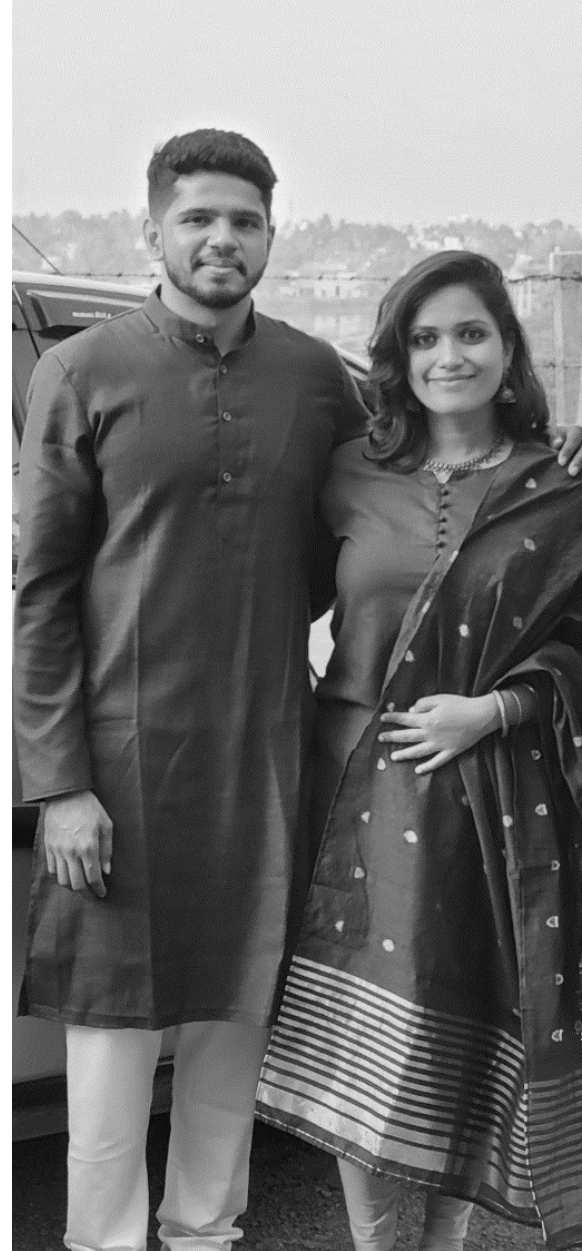
Architecture graduate from RV College, Monika has extensive experience in managing and designing residential and commercial projects at Total Environment Building Systems. She co-founded Redgrid Architects to deliver exceptional designs, drawing on her expertise in architecture, Interiors, and project management. Outside work, she enjoys traveling to the mountains and spending time with her family.

## **Harshavardhan**

Co-Founder, Redgrid Architects

A Mechanical Engineer, Harshavardhan leads the execution at Redgrid Architects, ensuring precision and quality. Previously at Total Environment Building Systems, he combines his passion for design with hospitality, hosting Airbnbs in India. He's also a fitness enthusiast and avid biker.







Our Unique Approach  
Here's What Sets Us Apart



## Inspired By Vision

There's nothing more fulfilling than seeing a structure rise from the ground up. What was once an empty plot transforms into a space of purpose and possibility. Every choice, from the foundation to the final finishes, embodies your vision and needs, with precision and care shaping every detail.

And why shouldn't it? This space will be where milestones are reached, and memories are made, standing strong for years to come.

So let's get started. Together, we'll turn your architectural dream into reality.



## The Design Process

We have divided the design process into two parts:

### **Part A-Project Approach**

Focuses on conceptual design, where we gather client input and develop initial ideas through site visits, questionnaires, and mood boards.

### **Part B-Technical Design Phase:**

Emphasizes technical design, involving structural planning, detailed drawings, and critical site visits to ensure seamless execution and coordination among all stakeholders.







---

## **Project Approach**

### **Step 1: Site Visit**

The site visit includes comprehensive measurements and dimensions, an analysis of the site context—such as surrounding roads, traffic patterns, adjacent buildings, viewpoints, and drainage considerations—along with the collection of photographs to document the visit.

---

## **Step 2: Client Design Questionnaire**

We thoroughly understand the client's lifestyle, aspirations, occupancy, spatial needs, professional life, and any Vaastu preferences through in-depth interactions, integrating their input seamlessly into the design process.

# RED GRID

ARCHITECTURE & INTERIORS TURNKEY

## Design Questionnaire: Red Grid

The love for design and the joy of giving people a place to proudly call home truly inspires and motivates Red Grid. We believe new ideas can come from anywhere but the most powerful ones come from within. We build your home around you. We are herewith sending a "Questionnaire" to understand your requirements and expectations so that you can help us help you build your dream home.

[studiogridarchitects@gmail.com](mailto:studiogridarchitects@gmail.com) [Switch account](#)



Not shared

\* Indicates required question

Name \*

Your answer

What do you absolutely love about your current home? \*

Your answer

If you had to change one thing about your current home, what would it be? \*

Your answer





## Elevations

Red Grid

### Step 3: Mood Boards

We create mood boards based on client requirements, showcasing the material palette and design style for both external and internal spaces, offering styles such as Contemporary, Indian Contemporary, and Traditional, accompanied by sample visuals.



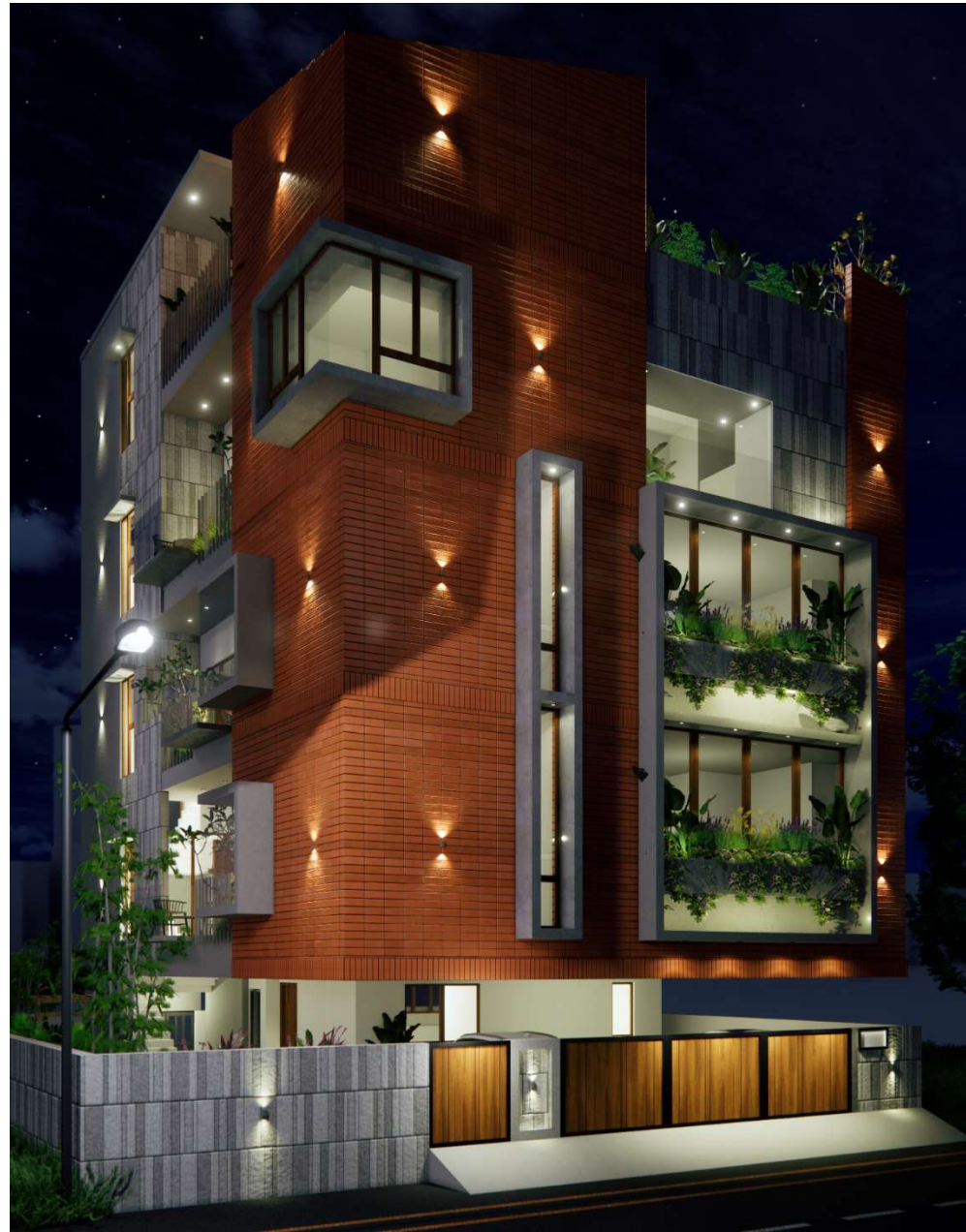
# Living

Red Grid

#### **Step 4: Design Visualization**

We present 2D plans, 3D walkthroughs, and renderings based on the previous design steps, incorporating client feedback through an iterative process to refine and perfect the designs







## **Step 5: Final Plans and Sign-off**

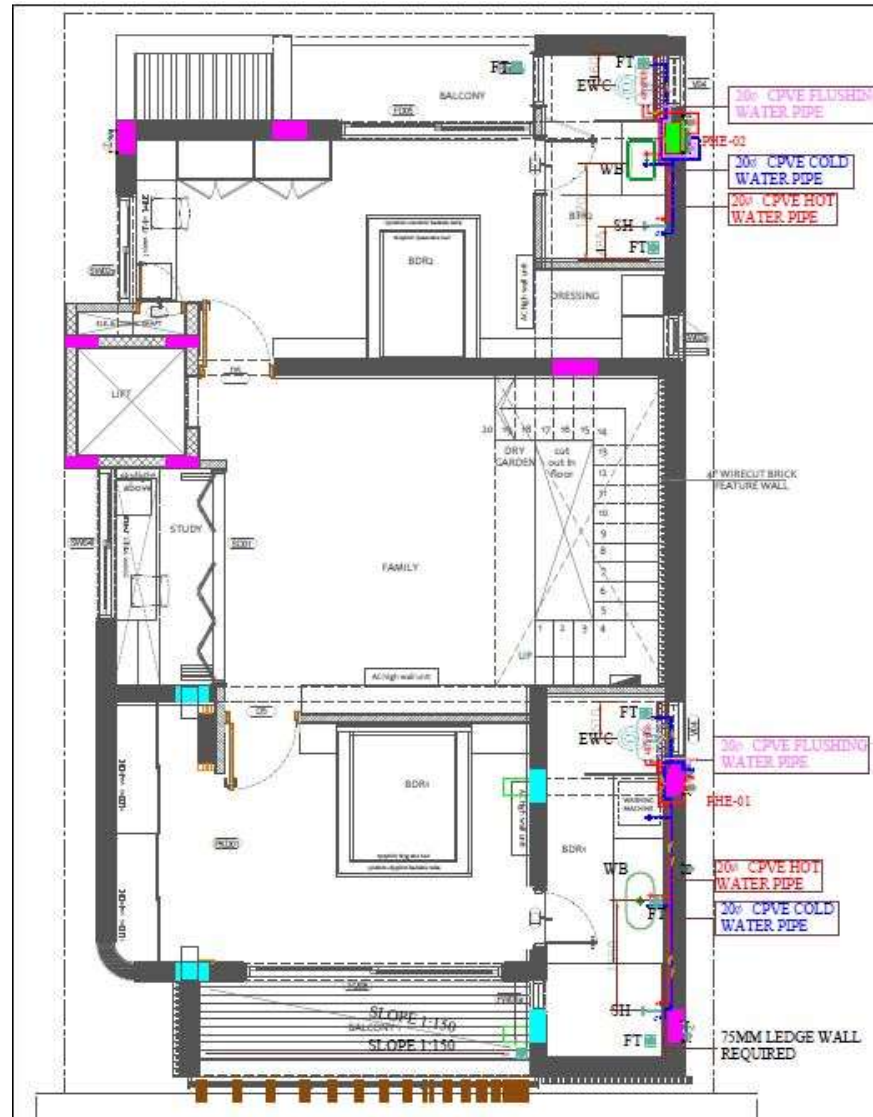
We provide a complete set of plans, sections, and elevations for client approval, outlining the finalization and sign-off process to ensure all designs meet client expectations before moving forward.



## **Technical Design Phase (Part B)**

### **Step 6: Structural, Electrical, and Plumbing Design**

This phase involves engaging consultants and creating detailed structural layouts, including column and beam layouts for all floors. Alongside structural elements, we integrate electrical and plumbing layouts, ensuring that all systems are planned cohesively from the start.

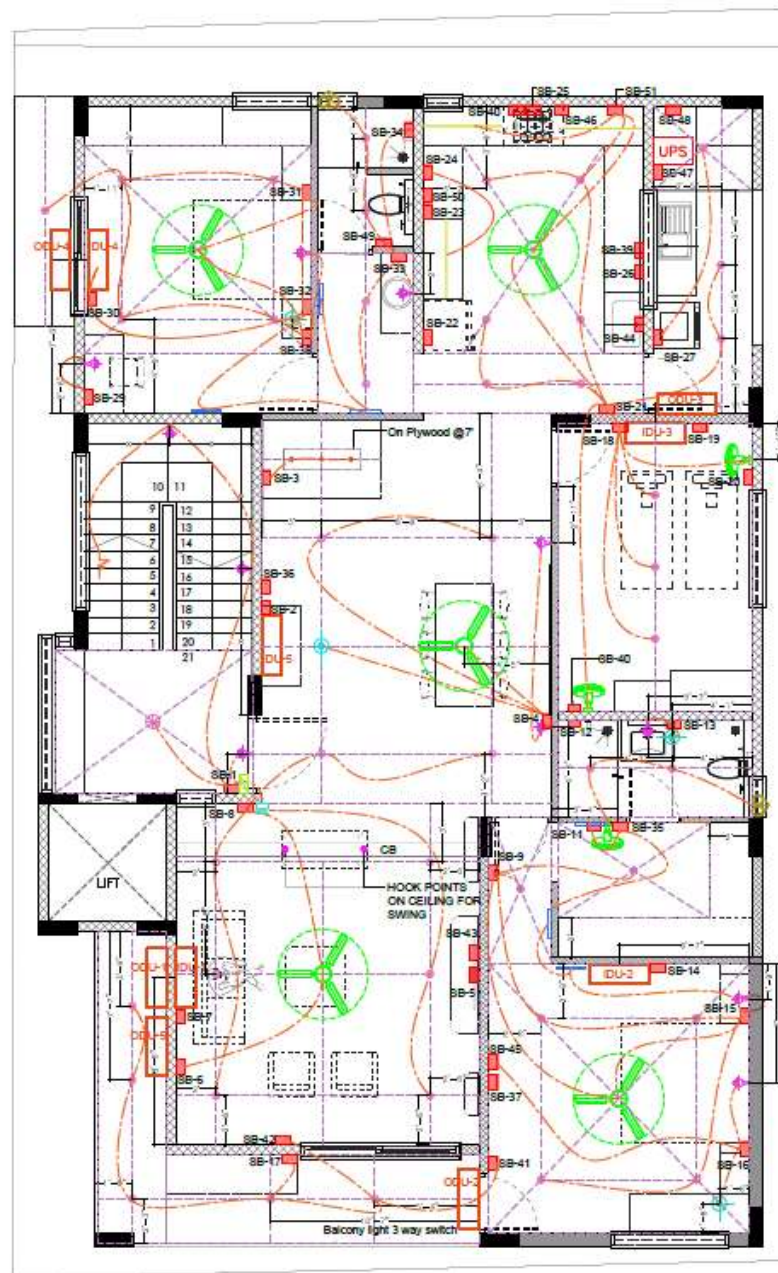




## **Step 7: Integration of drawings**

we integrate the structural, electrical, and plumbing plans with the architectural drawings. This phase may involve necessary modifications to harmonize all elements. After this integration, detailed foundation plans, walling, electrical, and plumbing designs are developed.

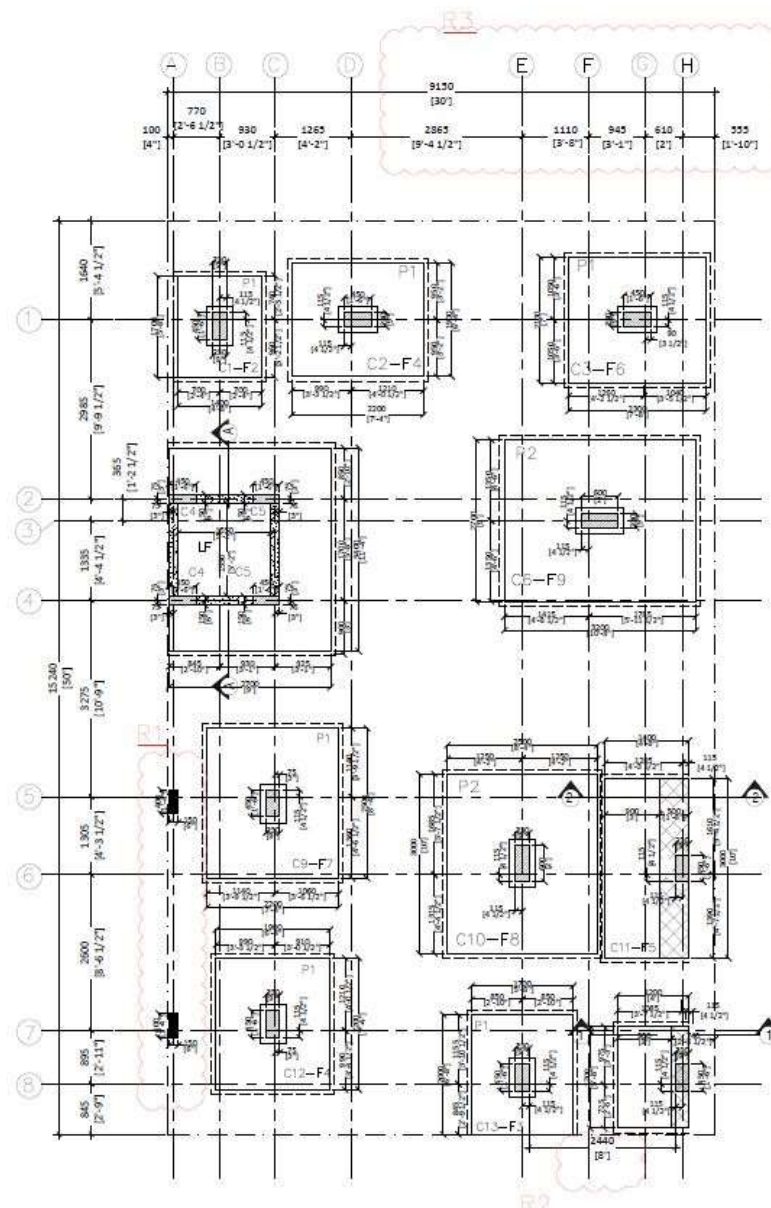
We review the final integrated plans with the client, discussing any revisions and obtaining final closure before moving to the construction phase.



### **Step 8: Site Visits, Coordination, and Periodic Drawing Releases**

We conduct site visits at every critical stage—such as marking, foundation laying, casting, and other significant milestones. These visits ensure that the project is progressing as per the approved plans.

During these visits, we maintain close coordination with all stakeholders—contractors, consultants, and the client—to ensure smooth execution and address any challenges immediately. We also release periodic updated drawings and details as required to reflect the latest on-site progress and any changes that arise during construction



**RED GRID**

ARCHITECTURE & INTERIORS TURNKEY

Begin your home interiors journey with Red Grid today

[www.redgridarchitects.com](http://www.redgridarchitects.com)

**8050599438 | 8050727509**

















