



DEVELOPMENT READINESS

**NBNPHA
2024**



WHO ARE WE ?

CORBO is a professional **multidisciplinary** company based in New Brunswick, dedicated to finding **innovative, practical, efficient, and feasible solutions** to various challenges while respecting **realistic budgets** for its clients.

Our company specializes in multiple fields of **architecture and engineering**.

ROLES

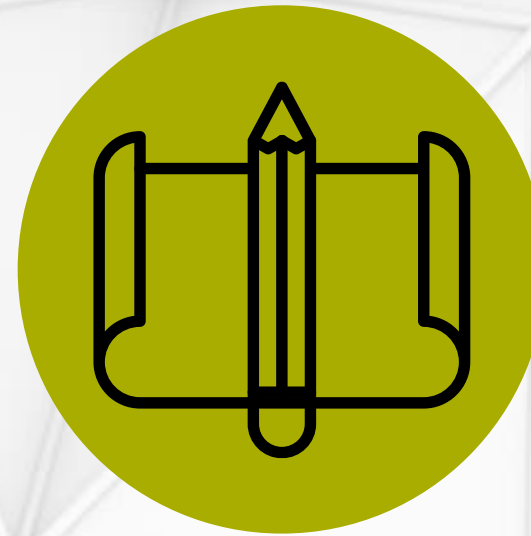
- What is the role of decision-makers during the development phase?
- Architecture vs Engineering during the development phase.

ROLE OF DECISION-MAKERS



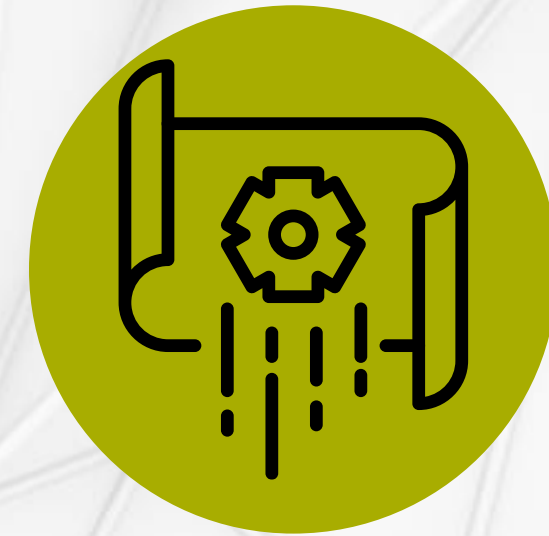
DEVELOP

Initiate the project.



INVOLVEMENT

Be involved during the development.

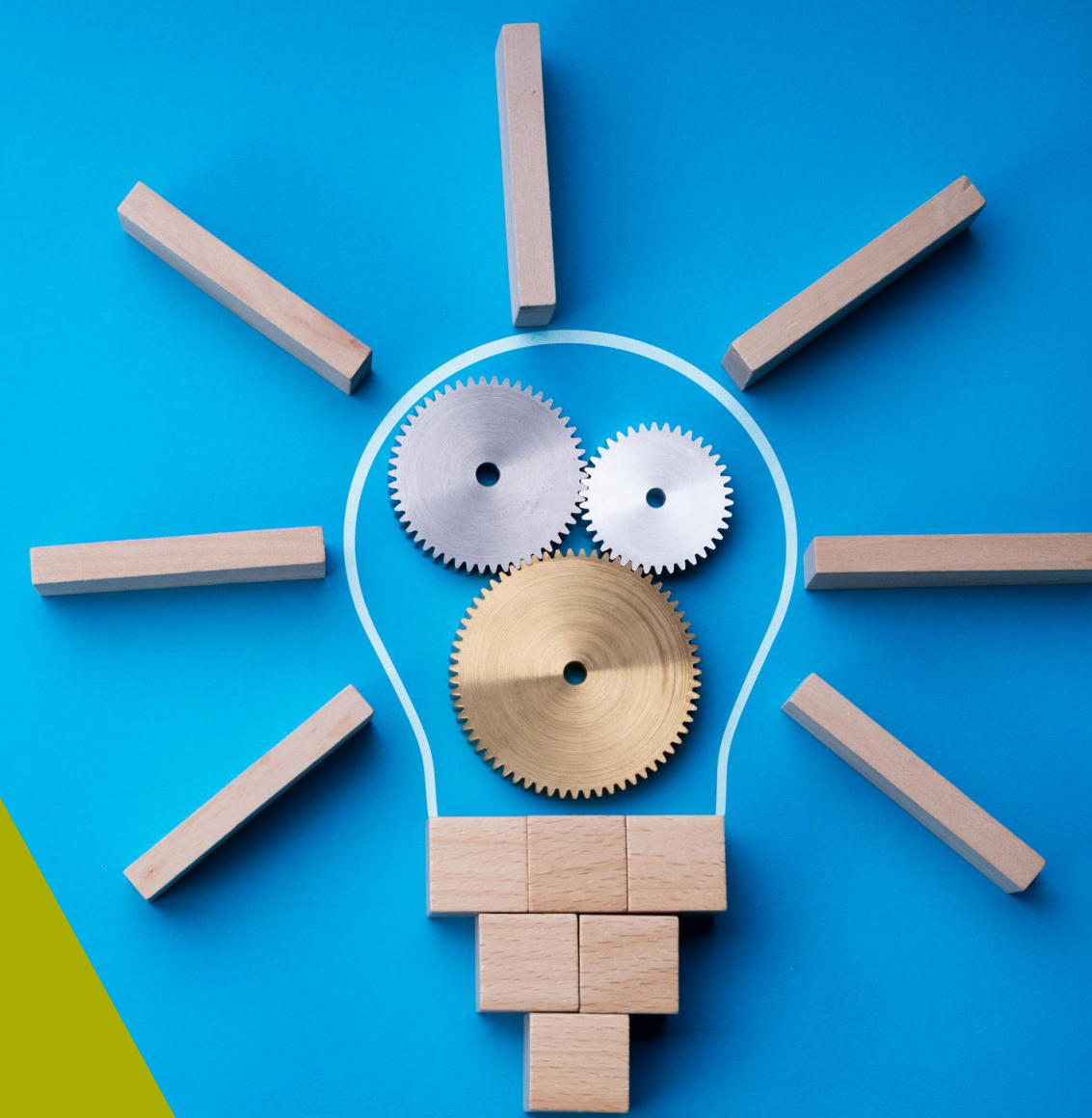


DECIDE

Impacts and consequences of key decisions.

ARCHITECT OR ENGINEER?

- Architecture vs Engineering during the development phase.
- Importance of collaboration



PROGRAMMING

1

DEFINE

- Scope, objectives, and goals of the project.
- Stakeholder expectations.

2

ANALYZE

- Existing data and documentation.
- Key opportunities and constraints.

PROGRAMMING

3

PRE-DESIGN

- Create the project concept.
- Initial estimate (Class D), Contingency +/- 30%
- Incorporate client feedback.

4

SCHEMATIC

- Implement the concept.
- Control estimate (Class C), Contingency +/- 20%
- Incorporate client feedback.

3

PRE-DESIGN Campus

University building:
classrooms, offices,
meeting rooms, and
gathering space.
10,000 square feet.

Training workshop:
20,000 square feet.

Pedestrian
walkway.

Vehicle access to the
training workshop and
delivery area.

General parking
area.

Modular housing and
dining facility for 60
people (students and
teachers).

3

PRE-DESIGN Campus

Training workshop:
20,000 square feet.

University building:
classrooms, offices, meeting
rooms, and gathering space.
10,000 square feet.

Outdoor lounge
area

Outdoor
classroom

3

PRE-DESIGN Campus



3

PRE-DESIGN Campus



4

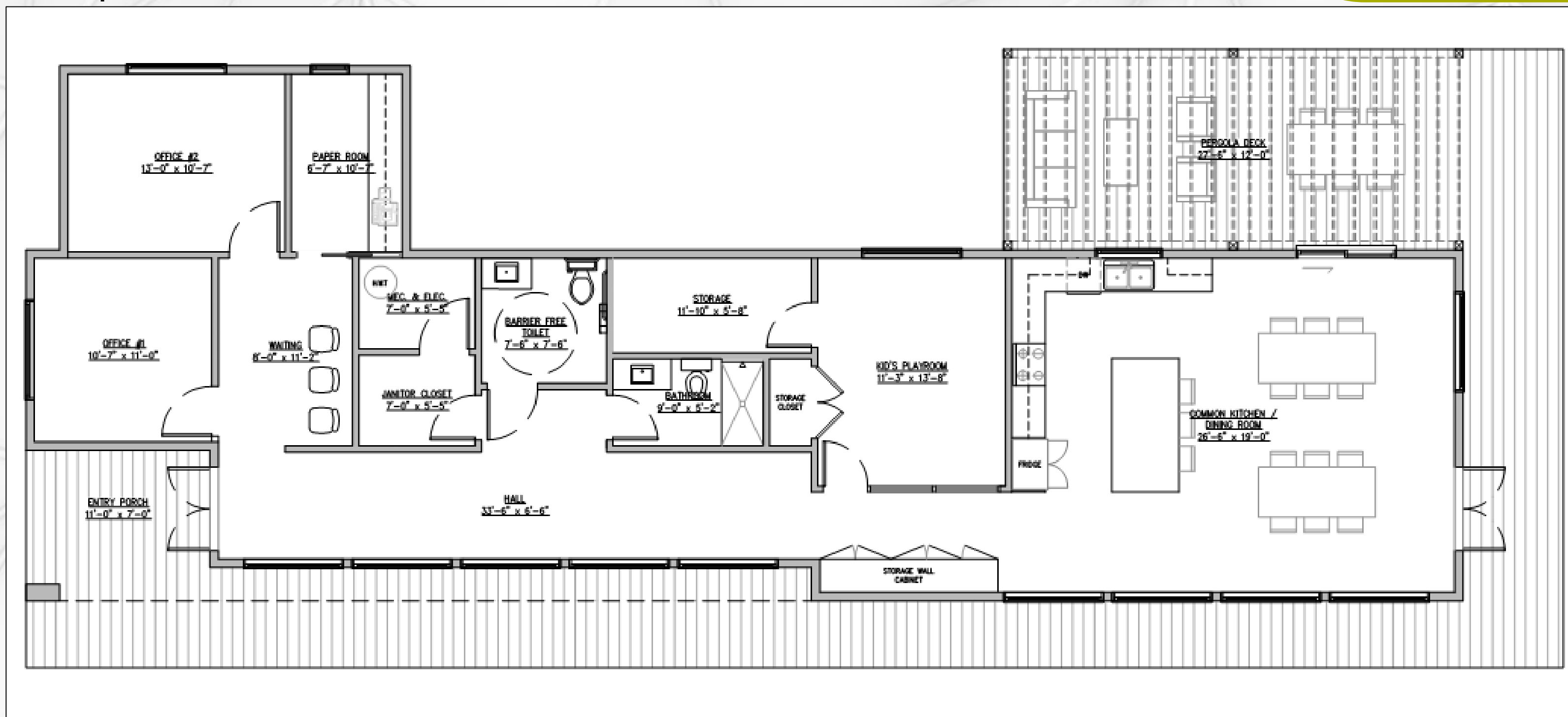
SCHEMATIC Eco-Subdivision

Common House

Offers professional wellness services such as social workers, physiotherapists, etc. The house also provides a secure space ideal for various gatherings like neighborhood activities and meals.

SCHEMATIC Eco-Subdivision

Floor Plan of the Common House.
1,860 square feet



4

SCHEMATIC
Eco-Subdivision

House Model No. 1
3 bedrooms
1,140 square feet



House Model No. 1
1,140 square feet

4

SCHÉMATIQUE Écoquartier



4

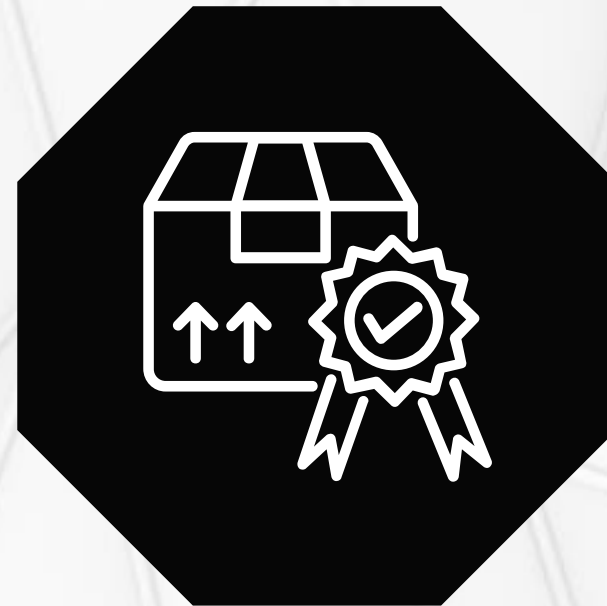
SCHEMATIC
Eco-Subdivision



NEXT STEPS...



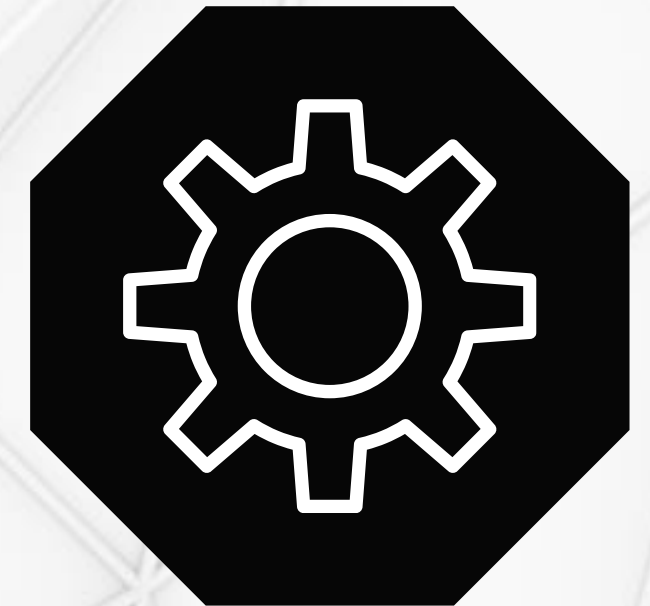
**DETAILED DESIGN
AND
CONSTRUCTION
DOCUMENTS**



**TENDERING AND
NEGOTIATION**



**CONSTRUCTION
WORK**



**OPERATION AND
MAINTENANCE**

CONCLUSION

- Stakeholder engagement is essential in the development process.
- Respect the timeline of steps during development.
- A large-scale project does not necessarily mean a complex project.



THANK YOU!



GÉNIE CONSEIL | ENGINEERING | ARCHITECTURE

855.307.7100

info@corboinc.com

www.CORBOinc.com

