



**MAYVA** K  
COLLECTION

**SPRING 2024 COLLECTION**

# ORDERING INFO

**Mayva Kern /Corporate**  
480.512.9164  
Mayva@mayvakcollection.com

**Marianne Deibel**  
Region: FL  
Email: marianne.deibel@gmail.com  
Phone: 954.344.1365

**Joey Evans**  
Region: AZ, Southern CA, CO  
Phone: 949.350.5082 Fax: 480.563.3971  
Email: jevans\_talks@outlook.com

**Jennifer Perry**  
Region: IL, IN, OH, WI, MI, KY  
Email: JenniferPerry835@gmail.com  
Phone: 847.814.2148

**Angie Momeier**  
Region: TX, LA, OK, AR  
Phone: 713.253.3407  
Email: momeierangie@gmail.com

NOTE: Actual handbag colors may vary due to print reproduction and paper stock.

**Visit us online: [mayvakcollection.com](http://mayvakcollection.com)**

**NEW!**

Logo Monogramming Available!  
Call for Pricing at 480.512.9164



## RECTANGLE WRISTLET STYLE 005-014

**FEATURES:** Zip top closure with multiple compartments and credit card slots. Simple design with great storage. Made with vegan leather, gold-tone hardware, solid-colored cotton lining. Includes 8.5" detachable wrist strap. Exterior measures: 4"H x 7"W x 1"D



Camel with top side and removable wrist strap views



## PHONE CROSSBODY POUCH STYLE 7081-016

**FEATURES:** High quality faux leather, solid-colored fabric lining, gold-tone hardware and removable, adjustable crossbody strap. Holds all regular and plus size iPhones. Exterior measures: 8"H x 5.45" W x 1"D



Mint front view with phone comparison, inside view and with crossbody strap



## FRINGE PHONE CROSSBODY STYLE 7075-018

**FEATURES:** Vegan leather with magnetic closure and fringe trim. 2 inner pockets. Comes with a metal clip, fanny pack, buckle loop and adjustable cross body strap. Also has a credit card holder with 4 slots. Holds all regular size iPhones. Exterior measures: 4.5"W x 7"H x 1"D.



Red (7075) with adjustable crossbody strap and back view



## PRINT CROSSBODY STYLE 7013-018

**FEATURES:** Top zipper closure with two major compartments and 1 middle zipper pocket. 2 slip pockets and 6 card holders. Comes with 8" wrist strap and 1 crossbody strap. Exterior measures: 8.5"W x 6"H x 1.5"D and is depth expandable



#81 Floral



Front with crossbody strap and inside view



## OSTRICH PRINT CROSSBODY STYLE 7013-35-020

**FEATURES:** Comes with wristlet strap and adjustable cross body strap. Exterior measures: 8.25" H x 5" W x 1"D and is depth expandable.



Color BB Pink shown with detachable wrist & crossbody strap



## NEW MULTI-TWEED CROSSBODY STYLE 8015-020

**FEATURES:** Top zipper closure with two major compartments and 1 middle zipper pocket. 2 slip pockets and 6 card holders. Comes with 8" wrist strap and 1 crossbody strap. Exterior measures: 8.5"W x 6"H x 1.5"D and is depth expandable.



## PEBBLE TEXTURED CROSSBODY STYLE 7070-022

**FEATURES:** Faux leather with top zipper closure and inside credit card compartments. Comes with wristlet and adjustable crossbody strap. Gold-tone hardware. Exterior measures: 9.5"W x 5"H x 1.5"D.



## NEW MAKEUP / GOLF CADDY STYLE TG10541-020 & TG10611-018 (CLEAR)

**FEATURES:** Very roomy caddy to fit all your essentials while traveling. 2 large inner pockets with 3 additional elastic side pockets. Exterior measures: 7.5"H x 9"W x 4"D



**NEW ZIPPER FRONT PEBBLE TASSEL CROSSBODY** STYLE 8018-024



**NEW DRAWSTRING POUCH** STYLE TG10528-024

**FEATURES:** Drawstring pouch with magnetic closure and adjustable cross body strap. Inner zipper pocket. Exterior measures: 7.5”H x 9”W x 4”D



**NEW MAGNETIC SNAP CELL PHONE BAG** STYLE 2321-24

**FEATURES:** Magnetic snap closure with outer and inner pockets, with adjustable cross body guitar strap. Exterior measures: 7.25” H x 5.5” W x 1.75”D



## SQUARE FRINGE CROSSBODY STYLE 3308-026

**FEATURES:** Faux leather with gold toned hardware. Outer magnetic pocket with self color fringe hardware. Top zipper closure with an inner fabric zipper pocket. Adjustable Cross Body strap. Exterior Measures: 8.5" W x 8.5 H x 1 "D.



## ZIPPER FRONT CELL PHONE CROSSBODY STYLE 3309-026

**FEATURES:** Faux leather with gold toned hardware. Outer front zipper pocket has 3 credit card slots. Holds all regular and plus size iPhones. Outside back zipper pocket with adjustable cross body strap. It's our new best seller! Exterior measures: 6.5" W x 8" H x 3" D.



## MINI HOBO SHOULDER BAG STYLE: N27029-028

**FEATURES:** Adjustable cross body strap. Gold-tone hardware and inner zip pocket. Comes with guitar strap.

Exterior measures: 6.35" H x 9.50" W x 3.25"D



## MINI DOUBLE TOTE STYLE 2326-030

**Back by popular demand!**

**FEATURES:** Tote bag with detachable pouch; main bag with 1 main roomy compartment; zip-top closure pouch with 2 inner side pocket and 1 inner zipper pocket. Removable adjustable strap. Exterior measures: 12" H x 11" W x 5"D



## MINI MESSENGER CROSSBODY STYLE 202865-030

**FEATURES:** Magnetic snap closure with adjustable guitar straps with outer and inner pockets.

Exterior measures: 8.5"W x 7.5"H x 2.75"D.





**NEW TRIPLE TOTE** STYLE 5145-032



**MAXI MESSENGER CROSSBODY** STYLE K201976-036

**FEATURES:** High quality faux leather with outer pocket, magnetic snap closure and adjustable cross body strap. Gold-tone hardware and inner zip faux leather pocket.  
 Exterior measures: 12" H x 11.5" W x 3"D.



## TASSEL FRINGE SHOULDER BAG STYLE 2020-02-036

**FEATURES:** High quality hobo bag with decorative tassel string, detachable pouch and 16 inch shoulder strap. Main bag has magnetic snap closure and inside zipper pocket. Exterior measures: 13.5”H (middle low part 9”) x 11”W x 4”D .



## REVERSIBLE DOUBLE TOTE STYLE 9012-036

**FEATURES:** Reversible, change the way it looks by turning the tote inside out; high quality classic design tote with detachable cross body bag; decorative string with logo  
 Exterior measures for tote: 11”H x 18”W x 5”D  
 Exterior measures for detachable crossbody bag: 9”H x 15”W x 5.5”D



**Reversible!**  
Silver/Metallic Pink

**3 bags for the price of 1!**

With inside detachable crossbody bag



**More Colors  
on Page 11**

REVERSIBLE DOUBLE TOTE STYLE 9012-036 *continued from page 10*



Mint/BB Pink



Mint/Gold



White/Mint



Olive Green/Fuchsia



Burgundy/Camel



Blush/Ivory



Light Grey/Ivory



BB Pink/Yellow



BB Blue/BB Pink



Black/Hot Pink



Light Purple/Ivory



Turquoise/Fuchsia



Lt.Blue/Coral



Beige/Royal Blue



Black/Khaki



Black/Red



Coffee/Camel



Hot Pink/Ivory



Grey/Beige



Ivory/Royal



Khaki/Beige



Beige/ Sky Blue



Camel/Beige



Sky Blue/Yellow



Navy/Khaki



Orange/Green



Coral/Ivory



Purple/Camel



Royal/DK. Fuchsia



Red/Coffee



White/Blue



Pewter/Gold



Silver/Gold



Gold/Silver



Rose Gold/Silver



Yellow/Green



Silver/Metallic Pink



White/Black



Leopard/Lt. Coffee



White/Navy

## LULU SLING BAG STYLE TG10430-016

**FEATURES:** High quality washed nylon with outer zipper pocket and adjustable strap to wear as a sling or fanny pack. 3 inner netted pockets. Exterior measures: 5.5" H x 8.5" W x 2"D



## NEW NYLON CROSSBODY/WRISTLET STYLE TG-10519-018

**FEATURES:** Double zipper pockets with magnetic snap closure. Gold crossbody chain strap and matching nylon wristlet. Exterior Dimensions: 5"H x 9"W x 1.5"D



## NEW DOUBLE ZIPPER LULU SLING/FANNY PACK STYLE 221023-018

**FEATURES:** Detachable adjustable weight strap with front and back zipper pockets. Can be worn around the waist or across the chest. Exterior measures: 5.5"H x 8.75"W x 1.75"D



## MINI NYLON CROSSBODY MESSENGER BAG

STYLE TG10294-024/SNAP CLOSURE

FEATURES: Zipper Closure and adjustable cross body strap Exterior measures: 8.5" H x 7.5" W x 2.5"D.



## NYLON CELL PHONE CROSSBODY

STYLE TG10296-018

FEATURES: Water resistant nylon bag with outer pocket and magnetic closure. Exterior measures: 6" W x 8" H x 2.5" D



## NEW LULU FESTIVAL BAG STYLE: TG10527-024

FEATURES: 2 outside zipper pockets, airpod or keys accessory case, zipper compartment flap over, removable headphone case, and adjustable crossbody strap. Exterior measures: 10" H x 6.5" W x 2" D



## NEW PUFFER CELL PHONE CROSSBODY STYLE: TG10283-016

FEATURES: adjustable cross body strap with inner pocket. Exterior measures: 5.5" H x 8" W x 1" D



### NEW Glossy Material Colors



**RECTANGLE PUFFER CROSSBODY** STYLE: TG10282-022

**FEATURES:** Adjustable strap. Gold-tone hardware and inner zip pocket. Exterior measures: 7" H x 9.5" W x 1" D



**NEW Glossy Material Colors**



**NEW PUFFER SHOPPER TOTE** STYLE: TG10522-030

**FEATURES:** Zipper closure tote with inside pocket and adjustable strap. Exterior measures: 10" H x 16" W x 7" D



**MINI PUFFER CROSSBODY** STYLE 5535-030/Zipper Closure

**FEATURES:** Adjustable cross body strap. Gold-tone hardware and inner zip pocket. Exterior measures: 8.5H x 7.5" W x 2.75"D



## MAXI PUFFER CROSSBODY MESSENGER BAG STYLE 2252-036/Zipper Closure

FEATURES: Adjustable cross body strap. Gold-tone hardware and inner zip pocket. Exterior measures: 12" H x 11.5" W x 3"D



## NEW PUFFER TRAVEL TOTE BAG STYLE 2350-034

FEATURES: Gold-tone hardware and inner zip pocket. Exterior measures: 17.5"H x 11.25"W x 5.75"D



## NEW CLEAR CROSSBODY STYLE TG10432-024

FEATURES: outer zipper pockets with adjustable crossbody strap. Exterior measures: 6.5" H x 8.5" W x 3"D.



## NEW CLEAR BACKPACK STYLE TG10438-028

FEATURES: outer zipper pocket with adjustable backpack straps and 2 netted outside water bottle pockets  
Exterior Measures: 12" H x 15" W x 4.5"D.



**NEW** THE PICKLEBALL BAG STYLE TG10544-024

FEATURES: outer zipper pockets with adjustable crossbody strap. Exterior measures: 6.5" H x 8.5" W x 3"D.



White/Pink



White/Royal



White/Red



White/Black



White/Teal



White/Navy



Grey



Pink



Navy



Ivory



Royal



Black

**LOGO MONOGRAMMING AVAILABLE**

Call for Pricing at 480.512.9164





## CABLE KNIT BLING TEXTING GLOVES

STYLE LG270-750

FEATURES: One size fits all, acrylic knit glove with bling accent. Fingerless for texting.



Burgundy Black Ivory Grey

## FUR BLING TEXTING GLOVES

STYLE LG315-012

FEATURES: One size fits all, faux-suede glove with fur trim and bling accent. Adjustable toggle to tighten around wrist. Fingerless for texting.



Dark Brown Navy White Black

## 5-WAY PONCHO

STYLE PA8672-020

MATERIAL: 100% Acrylic



PGN LTAN PEK BBL LA YE LOR LPK IV LGR NPK BK



OL CA BL SGY FS TQ NGN NBL WT LBL PK LGN NV CO



PalePK KELLY GN BR NOR PL PU RD TAN BUR Royal BL MU TE EG NLGN NYE2

## NEW SOLID SUPER SOFT 20% CASHMERE OBLONG SCARF STYLE BASC 2044-024

MATERIAL: 20% cashmere, 80% polyester, washable MEASUREMENTS: 25" W x 71" Length



Red



Black



Blue



Camel



Green



Pink



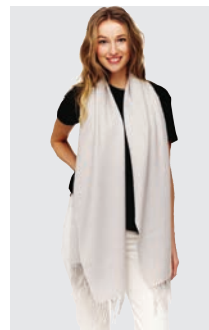
Coral



Hot Pink



Lavender



Silver



Yellow



Ivory

## FRINGE TUBE SCARF STYLE 7352-012

FEATURES: No fuss tube scarf in colors to accent and dress up fall and winter wardrobes. 100% Acrylic



## MOCK NECK CAPE PULLOVER

STYLE KTA0933-29

MATERIAL: 64% poly, 33% cotton, 3% spandex



Natural

Black



*Monogrammable!*

## METALLIC SHAWL STYLE 74SA31-026

MATERIAL: 100% Acrylic



Black

Grey

Ivory

Pale Pink

## LOGO MONOGRAMMING AVAILABLE

Call for Pricing at 480.512.9164

