

# MAYVA K COLLECTION

## 2024 DISCOUNTED TOURNAMENT GIFTS

Enjoy discounts on accessories that are perfect for your next event! Order a minimum of 48 items per style and receive an assortment of bright and fun colors! Embroidery is available on all pieces for an additional fee.

**To Order:** Please contact your Sales Representative or email [orders@mayvakcollection.com](mailto:orders@mayvakcollection.com)

### RECTANGLE WRISTLET STYLE 005 ~~\$14~~ NOW \$10

**FEATURES:** Zip top closure with multiple compartments and credit card slots. Vegan leather, gold-tone hardware, solid-colored cotton lining. Includes detachable wrist strap. Exterior measures: 4"H x 7"W x 1"D



### MINI NYLON CROSSBODY MESSENGER BAG

STYLE TG10294 ~~\$24~~ NOW \$18

**FEATURES:** Zipper Closure and adjustable cross body strap  
Exterior measures: 8.5" H x 7.5" W x 2.5"D.



### NYLON CELL PHONE CROSSBODY

STYLE TG10296 ~~\$18~~ NOW \$14

**FEATURES:** Water resistant nylon bag with outer pocket and magnetic closure. Exterior measures: 6"W x 8"H x 2.5"D



### MAXI PUFFER/VEGAN LEATHER CROSSBODY MESSENGER BAG STYLE 2252 ~~\$36~~ NOW \$25

**FEATURES:** Adjustable cross body strap. Gold-tone hardware and inner zip pocket. Zipper Closure. Exterior measures: 12" H x 11.5" W x 3"D



### MINI MESSENGER CROSSBODY STYLE 202865 ~~\$30~~ NOW \$22

**FEATURES:** Magnetic snap closure with adjustable guitar straps with outer and inner pockets. Exterior measures: 8.5"W x 7.5"H x 2.75"D.



### MINI DOUBLE TOTE STYLE 2326-030 ~~\$30~~ NOW \$22

**FEATURES:** Tote bag with detachable pouch; main bag with 1 main roomy compartment; zip-top closure pouch with 2 inner side pocket and 1 inner zipper pocket. Removable adjustable strap. Exterior measures: 12"H x 11" W x 5"D



### FRINGE TUBE SCARF STYLE 7352 ~~\$12~~ NOW \$9

**FEATURES:** No fuss tube scarf in colors to accent fall and winter wardrobes. 100% Acrylic



## MOCK NECK CAPE PULLOVER

STYLE KTA0933 **\$29 NOW \$25**

MATERIAL: 64% poly, 33% cotton, 3% spandex



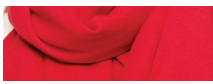
## METALLIC SHAWL STYLE 74SA31 **\$26 NOW \$22**

MATERIAL: 100% Acrylic

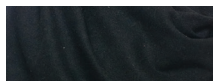


## SOLID SUPER SOFT 20% CASHMERE OBLONG SCARF

STYLE BASC 2044 **\$24 NOW \$22** MATERIAL: 20% cashmere, 80% polyester, washable MEASUREMENTS: 25" W x 71" Length



Red



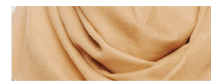
Black



Sage



Navy



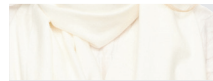
Camel



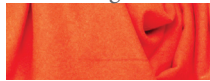
Hot Pink



Lavender



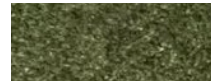
Ivory



Coral



Silver



Olive Green



Turquoise

## FUR BLING TEXTING GLOVES

STYLE LG315 **\$12 NOW \$9**

FEATURES: One size fits all, faux-suede glove with fur trim and bling accent. Adjustable toggle to tighten around wrist. Fingerless for texting.



Dark Brown



Navy



White



Black

## CABLE KNIT BLING TEXTING GLOVES

STYLE LG270 **\$10 NOW \$7.50**

FEATURES: One size fits all, acrylic knit glove with bling accent. Fingerless for texting.



Burgundy



Black



Ivory



Grey

## CUSTOM EMBROIDERY OPTIONS



Your favorites from Mayva K Collection can now be customized! We've partnered with an embroidery team in Arizona to add your logo to our items, while paying close attention to both detail and quality. Embroidery is available for an additional fee.

