



IMPACT



2025 Pitch Deck

www.ImpactLA.org | (213) 928-1040 | connect@impactLA.org

Non profit
501(c)3
Women Led
Minority Owned

ORGANIZATION OVERVIEW

Our Mission

Impact LA's purpose is to foster a safe space in underserved communities with resources and impactful services that help to support youth and their families evolve into well-rounded individuals.

Target Market: Youth and their families.

Priority Areas

- Food Security and Equity
- Expanded Learning
- Community Empowerment

Vision Summary: To be a reputable source of initiatives, programs and policies that produce a thriving and equitable community.

We're here to be more IMPACTful!





Co-founders

Our Values

Our core values are the ideals and principles that are at the heartbeat of our organization and guide the decision-making, actions and behaviors of everything we do.

Co-founders, Courtney Lockridge & Emerita Flores

With nearly two decades of experience in expanded learning, Impact LA was founded by two minority women deeply committed to giving back to the community that shaped them. United by a shared passion, they set out to create opportunities for youth to explore life beyond their usual boundaries, offering experiences that might otherwise remain out of reach.

Community & Teamwork

We value the transformative impact of collaboration. By working together, fostering open communication, & building supportive environments, we can achieve something even bigger.

Impact

We make a difference. We focus on results that matter for the greater good.

Authenticity

We do what we say we will do!

Giving

We possess the attitude of giving at all times with a joyful heart in all that we do.

Excellence

We challenge ourselves to do great work. We actively seek feedback to continually improve and evolve our practices and services.

Respect

We listen with empathy and respect for one another, valuing individual experiences and feelings while treating people with kindness and dignity

Innovation

We believe learning is essential for innovation, adaptation, resilience, and relevance. We embrace change and work to improve all we do in a fiscally responsible manner.

What does partnership mean to us

We place an especially high level of importance on community partnerships in Impact LA. We actively seek partners for much of the work we do. The weight we place on local partnerships is a crucial aspect of us being prepared for all that we do.

Community partnerships can be difficult to organize and sustain, but with our ability to get things done we'll create a legacy as a vital facet of community building.



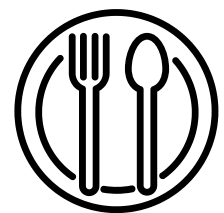
Food Equity

We aim to ensure that all kids get the nutritious meals they need everyday for FREE. Some kids can't count on having a healthy meal waiting for them when they get home, especially a warm one.

1 IN 4 CHILDREN IN LOS ANGELES COUNTY STRUGGLES WITH HUNGER.

Good health starts with good food. And where there is good health, there is the ability to learn, play and give back. Without healthy food, the cycle of food insecurity is perpetuated. Eating healthy, balanced meals is especially challenging in our community for the 1 in 4 kids who don't know where their next meal is coming from.

A hungry child cannot focus in school – they struggle to perform in the classroom, consistently scoring lower than their peers. Afterschool meals contribute to the healthy growth and development of low-income children by providing them with nutritious snacks and meals when school is out so they are better able to learn during the school day.



FREE Meals for Youth

Impact LA is dedicated to combating food insecurity by providing nutritious meals to children, youth, and vulnerable individuals across California. Our food security program operates through three key initiatives:

- Summer Food Service Program - California Department of Education
- Child and Adult Care Food Program - Department of Social Services
 - At-Risk Afterschool Meals
 - Emergency Shelter Meal Program

By leveraging partnerships and funding from the USDA, Impact LA ensures that no child or vulnerable individual goes hungry, fostering long-term well-being and stability in underserved communities.



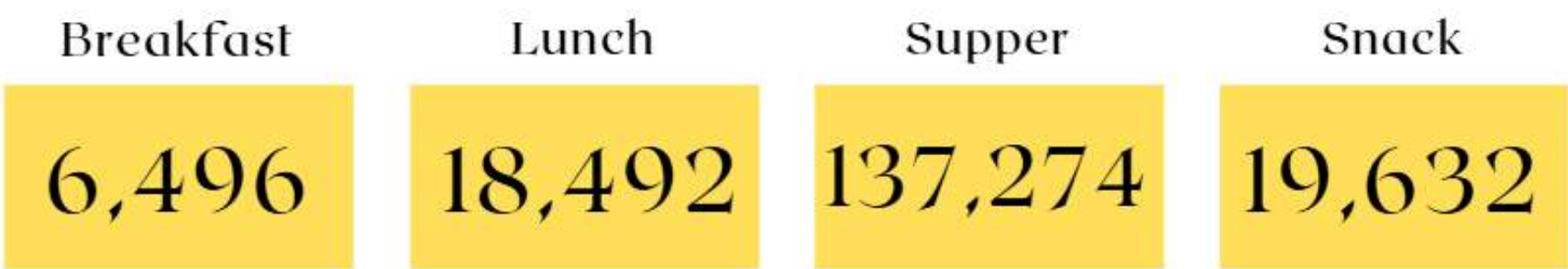
Our Ask

\$4.21 per meal for each child to receive a free meal after-school or during the summer break.

Free Meals Served

Meals Served 2024

At-Risk Meals served to kids 1-18 years old



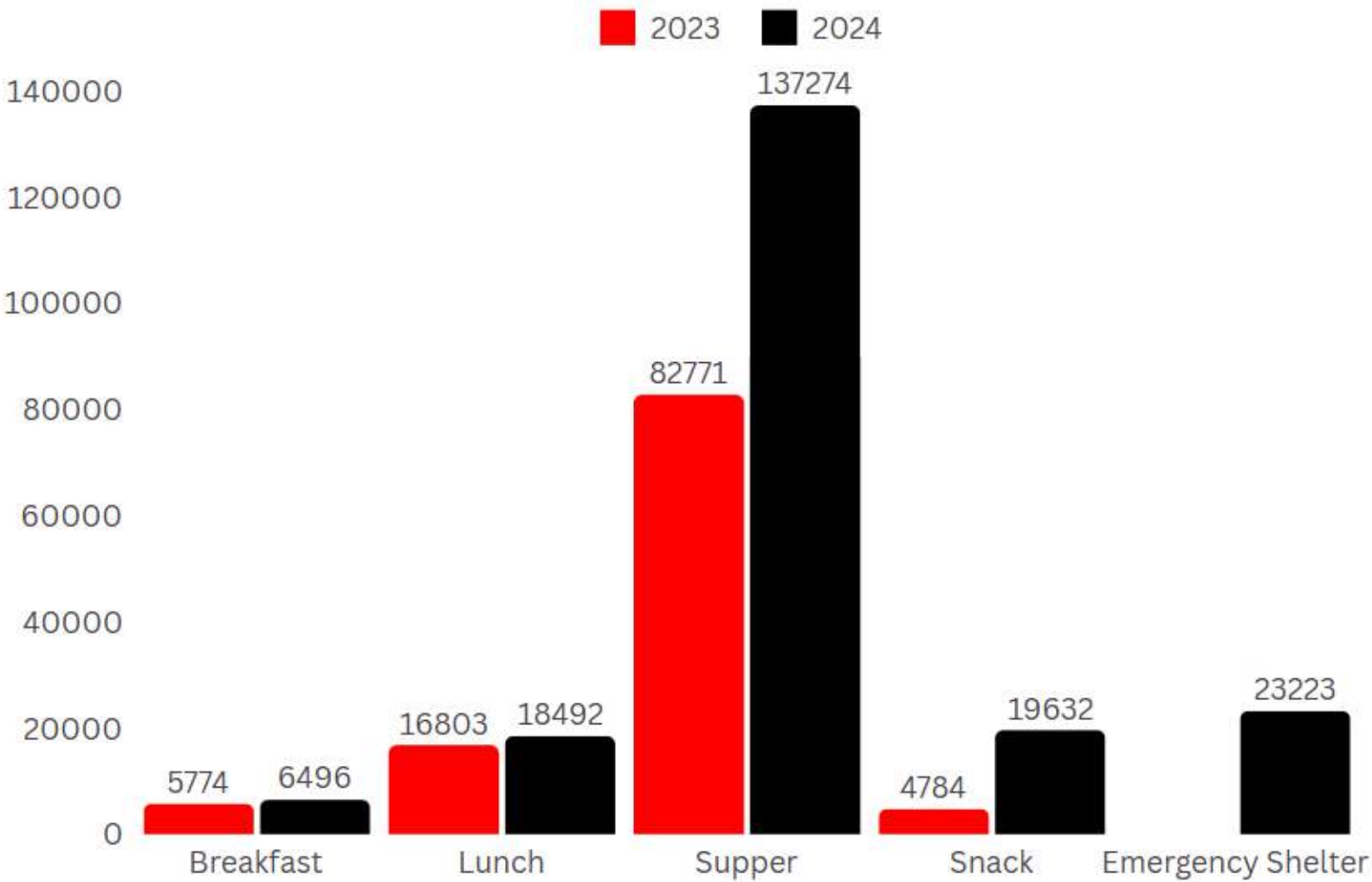
Emergency Shelter Meals



TOTAL
Meals
Served

207,141

Meals Served 2023 vs 2024

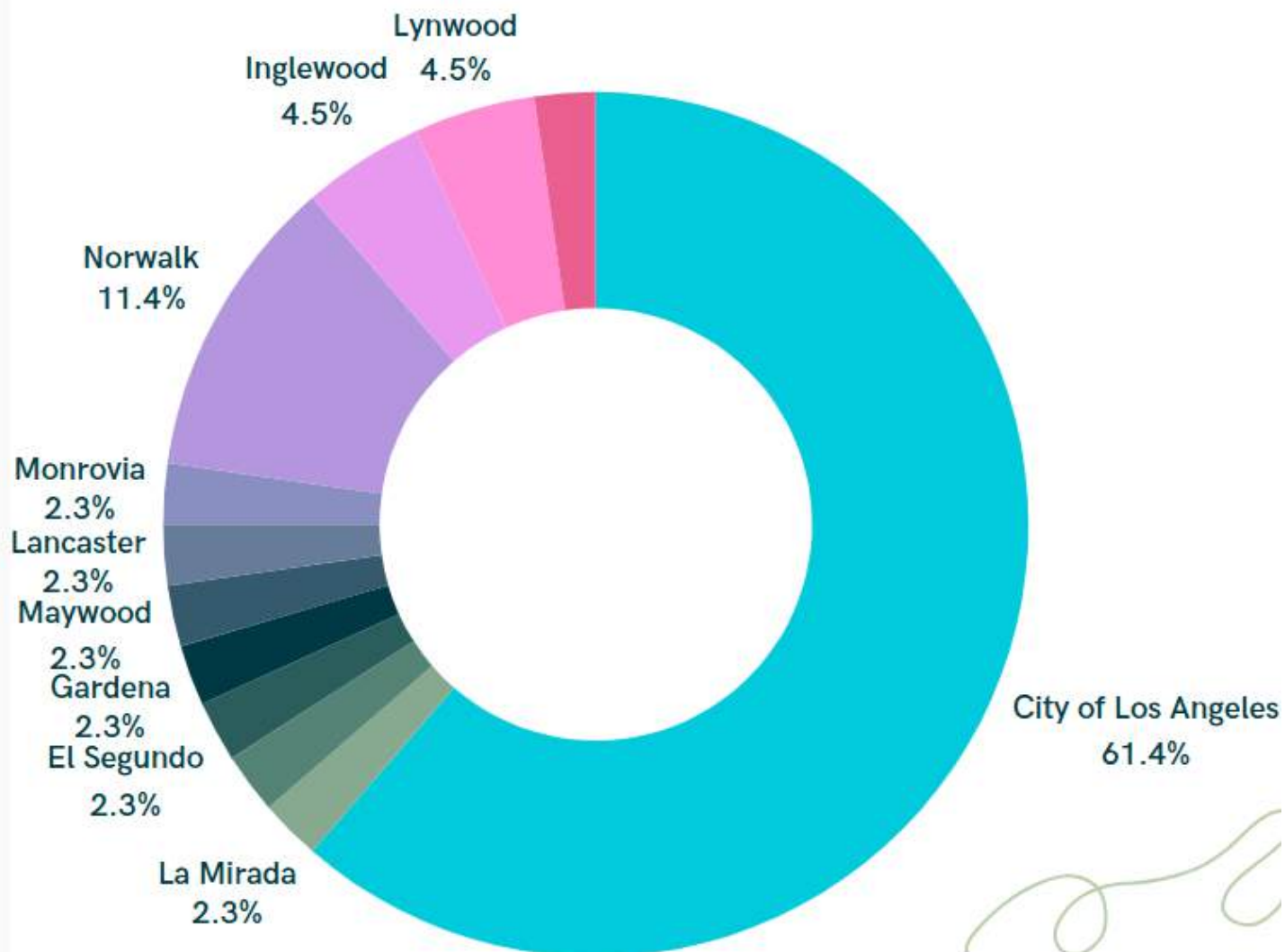


Our Ask

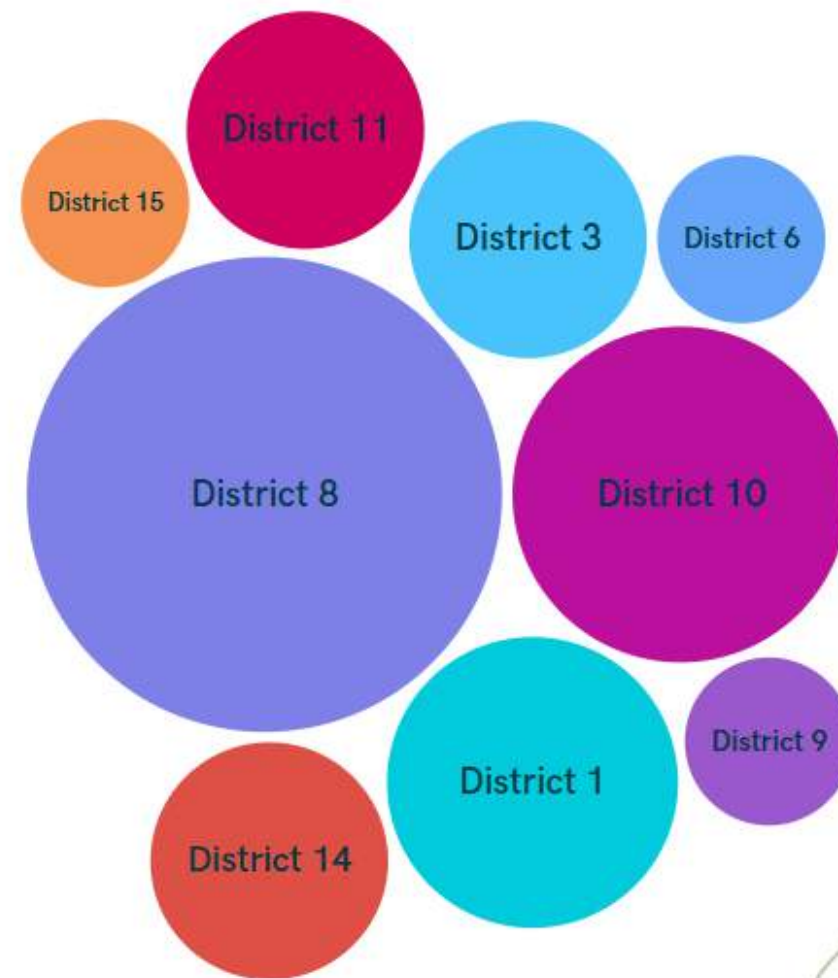
\$4.21 per meal for each child to receive a free meal after-school or during the summer break.

Making an Impact with Meals

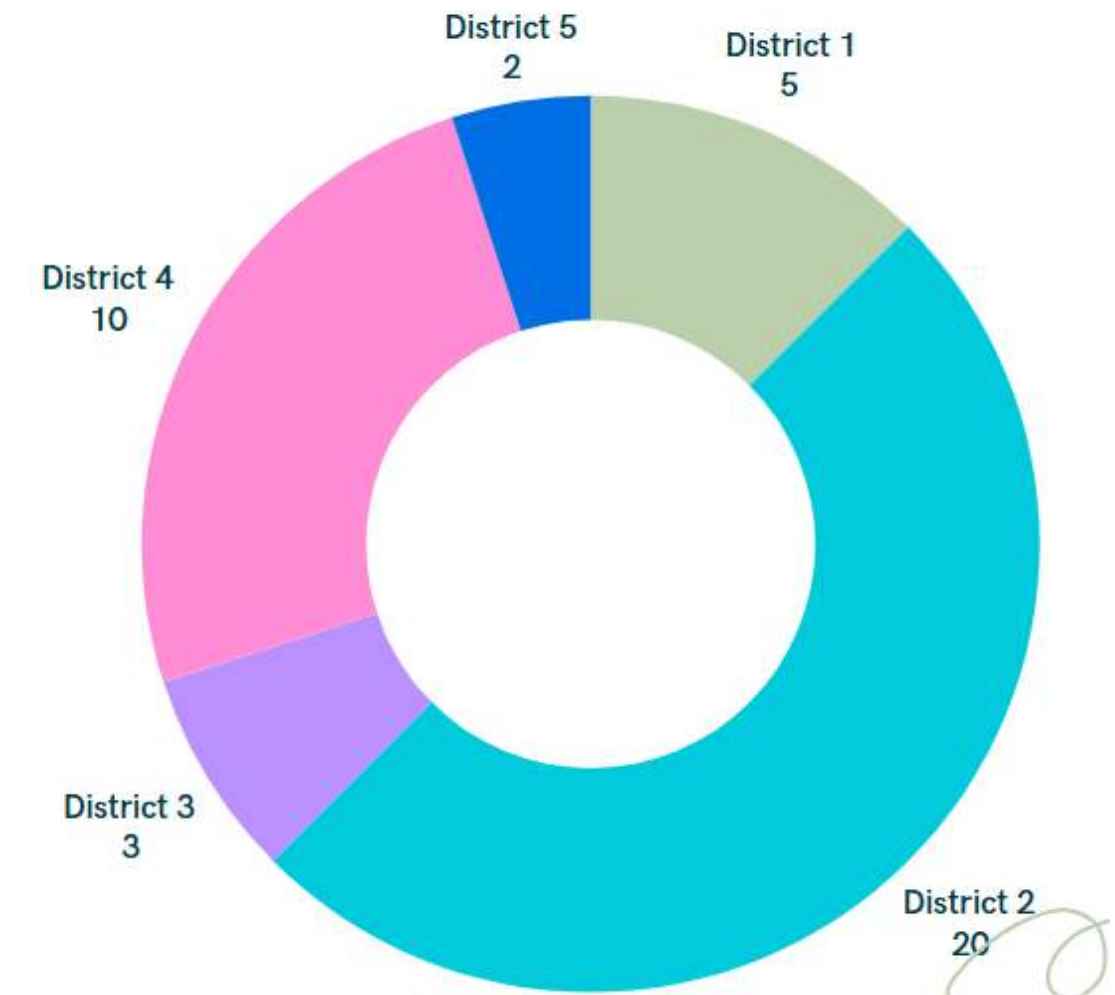
Service Area by City



Service Area by Los Angeles City Districts



Service Area by Los Angeles County Districts



Our Ask

\$4.21 per meal for each child to receive a free meal after-school or during the summer break.

Food Security

At Impact LA, we are committed to rescuing surplus food and redistributing it to those in need. Our food rescue initiative helps combat food insecurity by collecting fresh, nutritious food from local businesses, farms, and food providers that would otherwise go to waste. We ensure that these recovered goods are safely delivered to families, children, and individuals through our free meal programs and community distribution efforts.



Food Rescue Program

By partnering with food donors and community organizations, we bridge the gap between food waste and hunger, creating a sustainable solution that benefits both people and the planet. Join us in our mission to fight hunger and reduce waste—because no food should go unused when so many are in need.



Food Donors: Fight Hunger and Combat Climate Change

Almost 1 in 4 Californians don't have enough to eat. SB 1383 requires certain food businesses to donate the maximum amount of edible food they would otherwise dispose, to food recovery organizations.

Our Ask

\$29,657 to renovate our leased warehouses and purchase warehouse equipment.



Expanded Learning

We provide effective expanded learning programs during periods where kids are out of school and combine academic enrichment, extracurricular activities, and recreational opportunities that guide learning and engage children and youth.

Expanded learning programs are a win-win for communities. They help working families and keep kids safe and engaged before/after school and during the summer.

The quality programming we provide to students, expands their experiences beyond the classroom such as: Life Skills, Entrepreneurship, Gardening/Agriculture, Financial Literacy, Nutrition, The Arts and Foreign Language. Our students will participate in unique classes that support mastery, are collaborative, meaningful (personally relevant) and active (hands on/multi-sensory).

Research examining the costs and benefits of expanded learning programs estimate significant, positive, and long-term net savings. Reports suggest that the estimated cost savings for our society ranges from \$9-\$16 per dollar spent on expanded learning opportunities. Studies suggested that estimated benefits were primarily driven by reductions in criminal behaviors and the associated costs of legal fees and incarceration.



Return-on-Investment Benefits:

- Improved school performance and high school graduation
- Reduced criminal behaviors and associated costs
- Reduced teen pregnancy and birth rates
- Less substance use/abuse
- Improved health outcomes (e.g., heart disease, diabetes)
- Less reliance on social programs
- Increased lifetime earnings

Our Ask:

Donation of a Community Center, Recreational Facility or Unutilized Space for our Summer and Winter Camp 2026

Community Empowerment

Our community empowerment events, including our weekly Distribution Drive, annual Back to School Backpack Giveaway and Thanksgiving Turkey Dinner Drive, serve to provide resources, motivate activists, bring allies together and increase awareness of the needs in our communities.

Kobe Day! Back to School Giveaway

Kobe Bean Bryant's success was ultimately driven by his unmatched work ethic and commitment to himself, his family and everyone around him. The Black Mamba moniker he gave himself, fit like a custom suit. His impact both on and off the basketball court is immeasurable. He taught Angelinos and people across the world what the Mamba Mentality is all about. To celebrate his accomplishments and love for his community, we host Kobe Day every year on 8/24 to honor him.

Highest Event Attendance: 850

Average Volunteer Participation: 25

Thanksgiving Turkey Dinner Drive

In collaboration with BIG Sunday, our Thanksgiving Stuffing Event is a particularly fun and memorable opportunity for families, friends and groups to get together, assemble bags, enjoy one another and make new friends – while listening to an awesome bluegrass band. Big Sunday makes it possible for us to partner with hundreds of other organizations that are active in the community to create these meals. With the assembled bags that we are sponsored with, we're able to distribute them to families in need at our Annual Turkey Dinner Drive.

Highest Event Attendance: 320

Average Volunteer Participation: 320

Served over
1,274
FILLED BACKPACKS WITH
SUPPLIES TO YOUTH

ASSISTED STUFFING MORE THAN

4,600

THANKSGIVING DINNER KITS

SPONSORED 150 TURKEYS TO FAMILIES



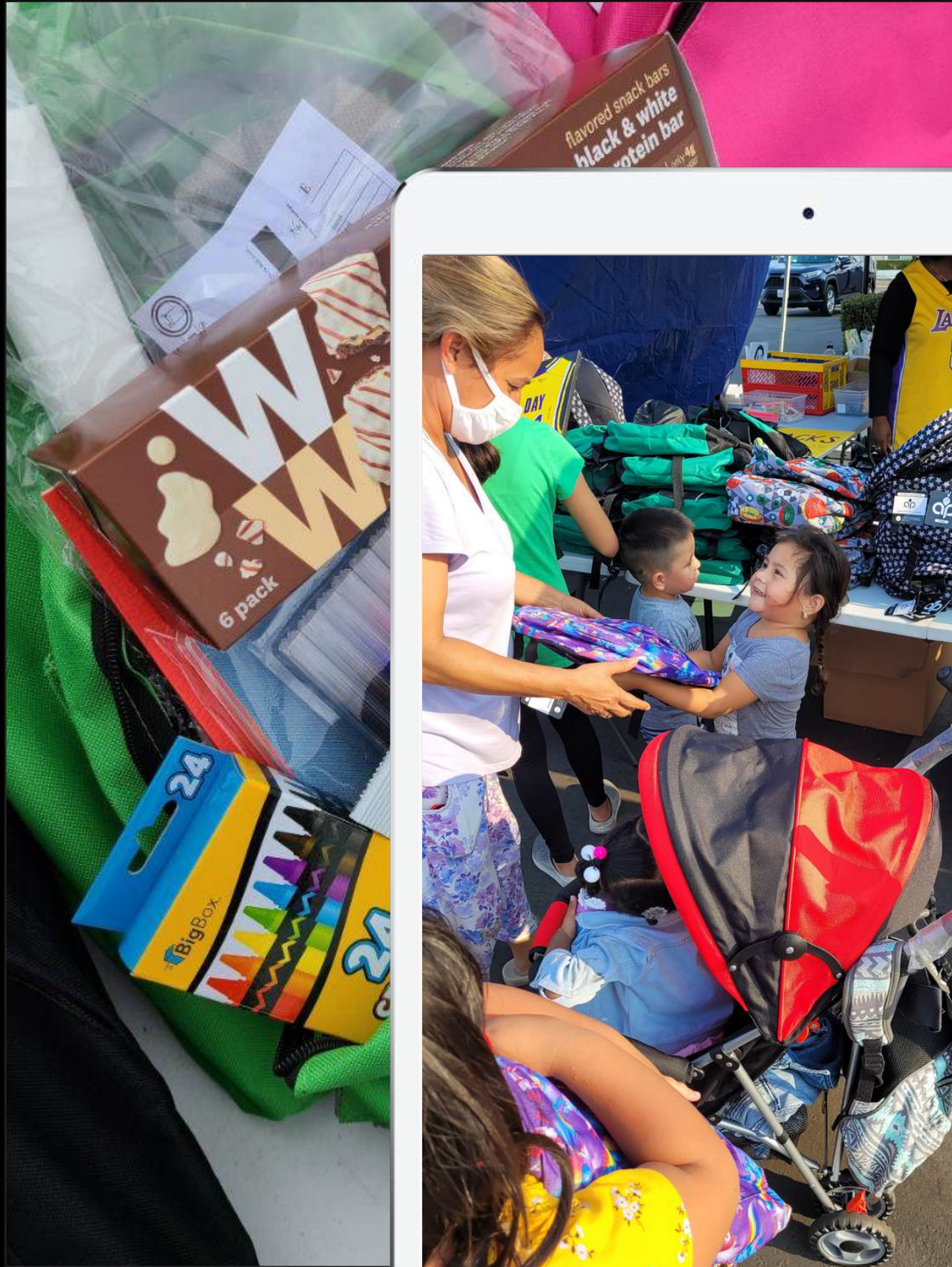
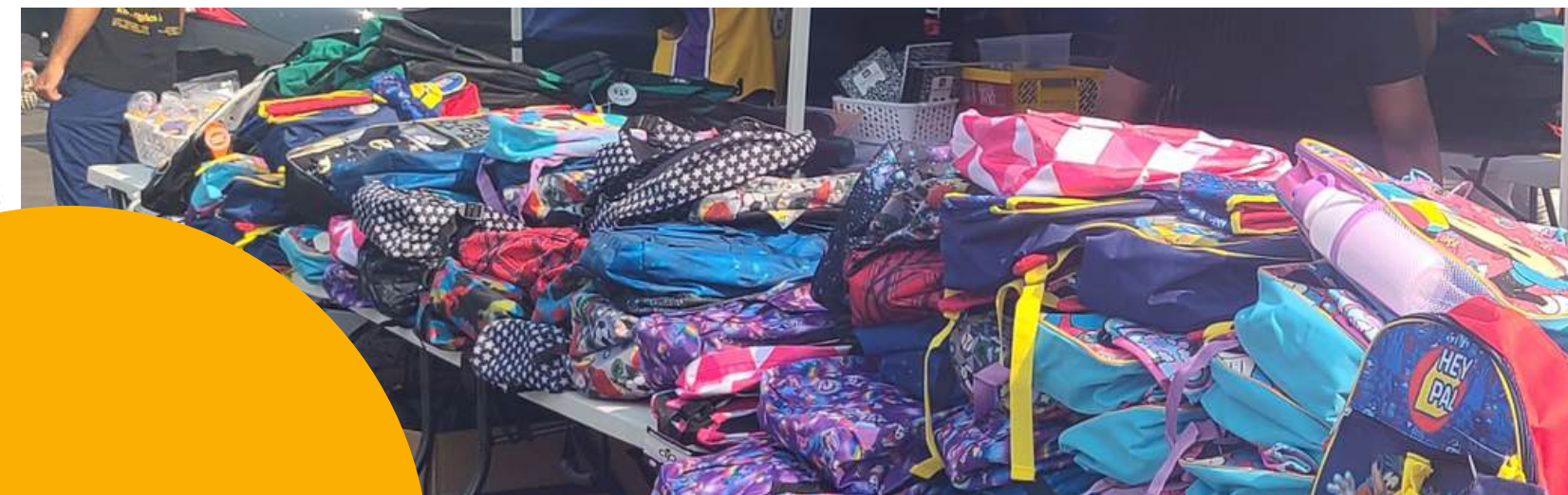
8.24

KOBE BRYANT DAY

Kobe Day! Back to School Giveaway

Our Ask

Donation of backpacks filled with school supplies, monetary donations that will be used to purchase backpacks and supplies, promotion of annual event and assistance with recruiting volunteers.





Thanksgiving Stuffing Event & Turkey Dinner Drive

Our Ask

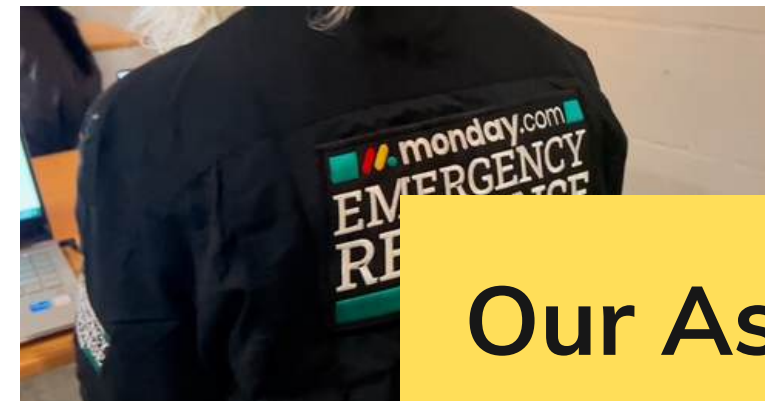
Donation of turkeys, monetary donations that will be used to purchase thanksgiving dinner items and referrals of schools or youth programs that will host giveaway of Turkey Dinner Kits to their families.

VICE PRESIDENT KAMALA HARRIS JOINED US IN ASSEMBLING THANKSGIVING TURKEY KITS WITH BIG SUNDAY, 2022

Community Distribution Drive

Since the Los Angeles fires, we recognized the urgent need for a community-driven approach to disaster relief, which is why we chose to become a mutual aid resource. As a nonprofit, we believe that mutual aid fosters solidarity, ensuring that those affected by crises receive immediate and compassionate support from their neighbors. Traditional aid systems can be slow and bureaucratic, leaving vulnerable communities without essential resources in critical moments.

By establishing ourselves as a mutual aid resource, we have been able to provide direct assistance—whether it's food, shelter, or essential items such as hygiene supplies, baby products and clothing. Our mission is rooted in the belief that communities thrive when they support one another, and in times of crisis, collective care is not just necessary but lifesaving.



Our Ask

Volunteer support in organizing donations at our warehouse and assisting with our weekly distribution drive.

Wildfire Relief

Evacuation Shelter and Distribution Center

Through our collaboration with the ANE Foundation, we successfully operated an evacuation shelter, providing safe housing for over 20 individuals and families. This wouldn't have been possible without 9ThirtyLA's generous in-kind donation of their event venue space.

In addition, we organized a large-scale distribution drive, utilizing an in-kind donation warehouse to provide essential items.

Motivated by the impact of these efforts, as of February 2025, we've expanded our mission to establish an ongoing food and supply distribution program through our community distribution drive, ensuring continued support for vulnerable individuals and families in the community.

Served over
1,625

WILDFIRE EVACUEES IN
JANUARY 2025



Current Partnerships



ANE Foundation
Things only change when we change them



the farmlink project



Los Angeles Urban League



FOODCYCLE LA



Good+Foundation



Baby2Baby



NEA
Academy of Science and Arts

Gold Transparency 2023

Candid.

Current Sponsors



California Department of Education

Provides reimbursable funding for nutritious meals in the Summer Food Service Program during the summer and winter school breaks. (supports youth ages 1-18)

2023 Funding: \$101,199.93

2024 Funding: \$112,799.50



California Department of Social Services

Provides funding for nutritious meals in the Child and Adult Care Food Program for our at-risk after-school programs and emergency homeless shelters. (supports youth ages 1-18 and physically/mentally disabled adults)

2023 Funding: \$368,856.58

2024 Funding: \$758,663.93



Southbay Workforce Investment Board

Provides entry-level workers to our organization by sponsoring their employment at 40 hours per week for 10 months. (supports the transition of people from public assistance into employment)

2024 (Oct-Dec) Funding: \$16,320 | 2 employees



Our Volunteers

Our volunteers are the backbone of our nonprofit organization, playing a vital role in bringing our mission to life. Through their time, skills, and dedication, they help us deliver impactful programs and services to the community.

2024: 4,140 hours | 46 volunteers

WHAT DO YOU THINK?

Do we align with your



or **program** goals?



Let's Make An Impact
Together!

The Team

Impact LA was established in 2019 by its Founders Courtney Lockridge and Emerita Flores, who have over 17 years of non-profit services experience.



Courtney Lockridge
Co-Founder



Emerita Flores
Co-Founder

"We are a small but mighty, woman of color led organization who are dedicated to improving the lives of those in our community."



LET'S MAKE AN IMPACT TOGETHER!

Impact LA, Inc
Headquarters

811 W 7th Street
Suite 1236
Los Angeles, CA
90017

Phone Number
(213) 928-1040

Email Address
connect@impactla.org

EIN
84-3797925