

ANNUAL REPORT 2025

RESCUING FOOD, SERVING FREE MEALS &
UPLIFTING UNDERSERVED COMMUNITIES



impactla.org



811 W 7th St Suite 1236
Los Angeles, CA 90017



LETTER FROM THE EXECUTIVE DIRECTOR

As we step into a new year, I want to begin by expressing my deepest gratitude to each of you, our supporters, partners, volunteers, board members, and community families. Because of your belief in Impact LA's mission, we continue to show up for our communities with care, consistency, and purpose.

This year, our focus is clear: strengthening systems, deepening impact, and expanding access for the communities we serve.

In the year ahead, Impact LA will continue to prioritize food equity and food rescue, ensuring that nutritious food reaches families who need it most while reducing waste and supporting environmental sustainability. We are committed to expanding our community distributions, strengthening partnerships, and improving the systems that allow us to serve more families with dignity and efficiency.

We are also investing in youth empowerment and development through expanded learning opportunities, summer programming, leadership initiatives, and community events that create safe, affirming spaces for young people to grow, learn, and thrive. Our goal is not only to meet immediate needs, but to help build pathways to long term opportunity and stability.

Internally, this year is about building strong foundations. We are focused on operational growth, board development, fiscal stewardship, and data driven decision making to ensure Impact LA remains sustainable, accountable, and positioned for long term impact. As our programs grow, so does our responsibility to lead with transparency, equity, and intention.

Most importantly, we remain grounded in the belief that community voices matter. Our work is strongest when it is informed by the people we serve and powered by collaboration. We invite you to continue walking alongside us, whether by volunteering, donating, partnering, or simply sharing our mission with others.

Thank you for being part of the Impact LA family. Together, we are building stronger communities, one act of service at a time.

With gratitude and purpose,

COURTNEY LOCKRIDGE
EXECUTIVE DIRECTOR

A stylized, handwritten signature in black ink, appearing to read 'CL', positioned to the right of the printed name and title.



MISSION

Foster a safe space in underserved communities with resources and impactful services that help support youth and their families evolve into well-rounded individuals.

VISION

To be a reputable source of initiatives, programs, and policies that produce a thriving and equitable community.

VALUES

- Community & Teamwork
- Authenticity: We actually do what we say we will do!
- Innovation: Embracing change to remain resilient and relevant.
- Giving: Possessing a joyful heart in all that we do.
- Excellence, Respect, and Impact.



FOOD SECURITY AND EQUITY

1 IN 4 CHILDREN IN LOS ANGELES COUNTY STRUGGLES WITH HUNGER.

Impact LA is dedicated to combating **food insecurity** by providing nutritious meals to **children, youth, and vulnerable individuals** across California.

OUR FOOD SECURITY PROGRAM INITIATIVES:

- Summer Food Service Program (SFSP)
- Child and Adult Care Food Program (CACFP)
 - At-Risk Afterschool Meals
 - Emergency Shelter Meal Program

By leveraging partnerships and funding from the USDA, Impact LA ensures that no child or vulnerable individual goes hungry, fostering long-term well-being and stability in underserved communities.



AFTER SCHOOL & SUMMER MEAL PROGRAMS

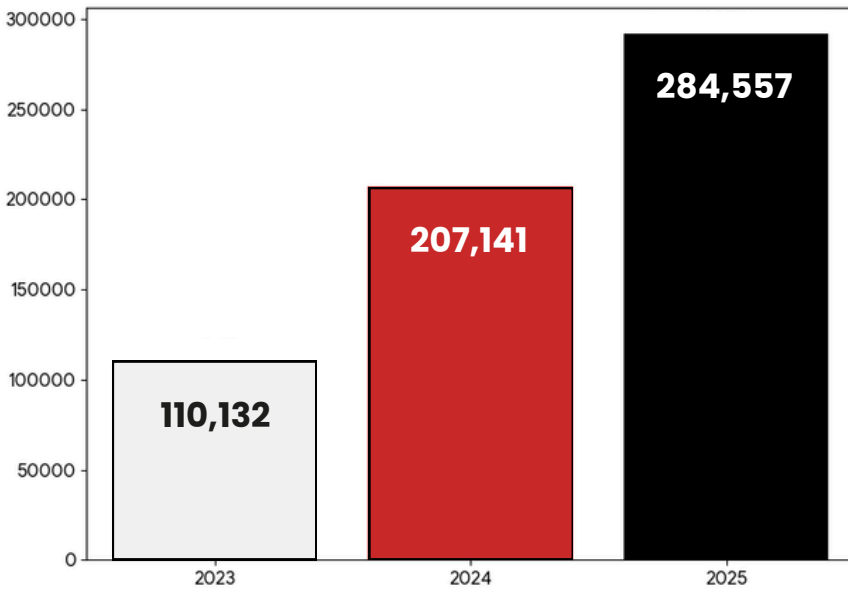
As a Child and Adult Care Food Program and Summer Food Service Program sponsor in California, Impact LA aims to ensure that all kids get the nutritious meals they need every day.

Our meals program follows the USDA meal plan guidelines, which include a variety of milk, fruit, vegetables, grain products and meats or meat alternatives.

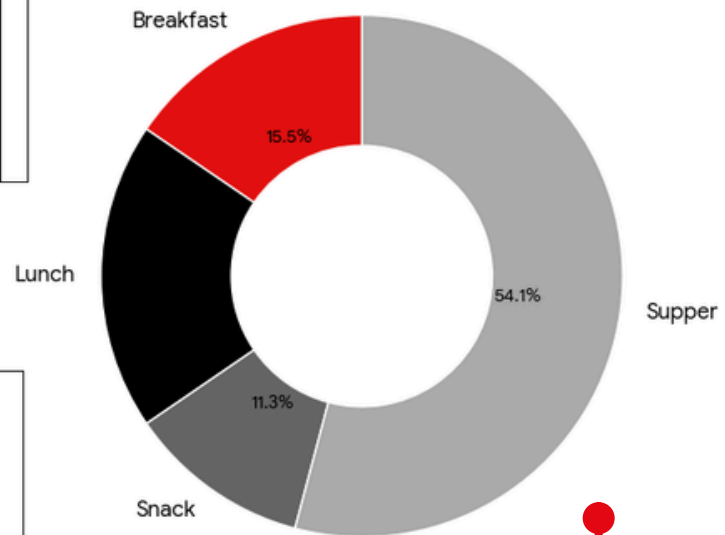
2025 MEAL PROGRAM OUTCOMES

**SCALING OUR REACH
FOR THE
FUTURE**

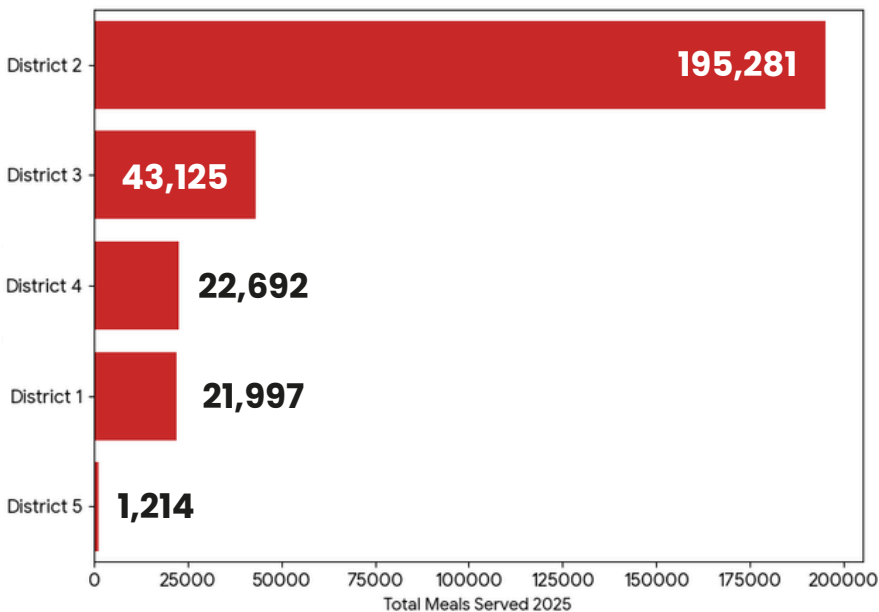
Total Meals Served (2023-2025)



2025 Meal Breakdown



Impact by LA County District



**PROVIDING
ANY MEAL
OF THE DAY**

ACROSS LOS ANGELES

FOOD RESCUE & ENVIRONMENTAL JUSTICE

ALIGNMENT WITH CALIFORNIA SB 1383

California Senate Bill 1383 mandates a **75% reduction in organic waste disposal** and a **20% increase in edible food recovery** to reduce methane emissions from landfills.

Impact LA's food rescue and redistribution programs directly advance these goals by:

- Recovering edible surplus food before disposal
- Diverting organic waste from landfills
- Supporting local jurisdictions in meeting organic waste reduction targets
- Reducing methane generation through upstream prevention

SB 1383—ALIGNED PUBLIC REPORTING STATEMENT

"Impact LA supports California's SB 1383 goals by rescuing and redistributing edible surplus food that would otherwise enter the waste stream. During the reporting period, the organization diverted approximately **572 tons of organic material from landfills** and prevented an estimated **286 metric tons of greenhouse gas emissions**, while increasing access to nutritious food for community members facing food insecurity."

ENVIRONMENTAL JUSTICE & COMMUNITY CLIMATE ACTION

Impact LA's food rescue work operates at the intersection of environmental sustainability and environmental justice. The communities most impacted by food insecurity are often the same communities disproportionately affected by environmental pollution and climate instability.

By recovering surplus food and redistributing it locally, Impact LA:

- Reduces environmental burdens on frontline communities
- Strengthens a community-based circular food economy
- Advances equitable access to healthy food while supporting climate resilience



1,143,121 pounds

of surplus food rescued in the reporting period, equivalent to approximately **572 tons of organic material diverted from landfills.**

286 metric tons

of **CO₂e emissions** avoided based on conservative EPA- and NRDC-aligned food waste conversion factors.

2.0 billion gallons

of **water.** This estimate reflects blended agricultural water-use averages across food categories and represents water that would otherwise be wasted through discarded food production.

WHY THIS MATTERS

Food waste is one of the largest contributors to landfill methane emissions and a major driver of unnecessary water and resource loss. Impact LA's food rescue efforts address climate change and food insecurity simultaneously—delivering both environmental and social benefits.



YOUTH DEVELOPMENT

Impact LA's extended learning programs combine academic enrichment, extracurricular activities, and recreational opportunities, aiming to engage children and youth during school breaks, such as the summer break.

YOUTH PROGRAMS

- SUMMER CAMP
- BASKETBALL CLINIC IN DURANGO, MX
- INTERNSHIPS FOR STUDENTS

With these offered programs, we aim to evolve into a regional leader in youth development—empowering a new generation of confident, capable, and community-minded individuals.

AFTER SCHOOL & SOCIAL EMOTIONAL LEARNING

MOVEMENT CAMP

THE PROGRAM

We integrate basketball, yoga, mindfulness, and reflection circles to strengthen emotional regulation, communication skills, teamwork, confidence, and leadership in youth. Programming emphasizes culturally responsive, movement-based approaches to wellness and community connection.



📍 DURANGO, MEXICO

Since 2022, Impact LA has served 262 youth through its Social & Emotional Learning + Movement Camps in Durango, Mexico.

The program reached **30 youth** in **San Miguel de Cruces** and **28 youth** in **Santiago Papasquiaro**, including 25 girls and one youth volunteer, supported by three U.S.-based volunteers and two additional volunteers.

2025	WE SERVED
58 YOUTH	AGES 8-17

REDUCING BARRIERS

All youth received socks and T-shirts, 54 participants received brand new sneakers, 12 youth received new basketballs, and selected participants received shorts, pants, backpacks, with most girls receiving sports bras.

CHALLENGES

Program delivery requires significant logistical coordination, including 511 miles (approximately 15 hours) of travel within Durango, in addition to cross-border travel from Los Angeles to Tijuana.

ALIGNMENT

The camp reflects Impact LA's continued commitment to accessible, holistic youth development through movement, emotional wellness, and community centered programming.

INTERNSHIP PROGRAM



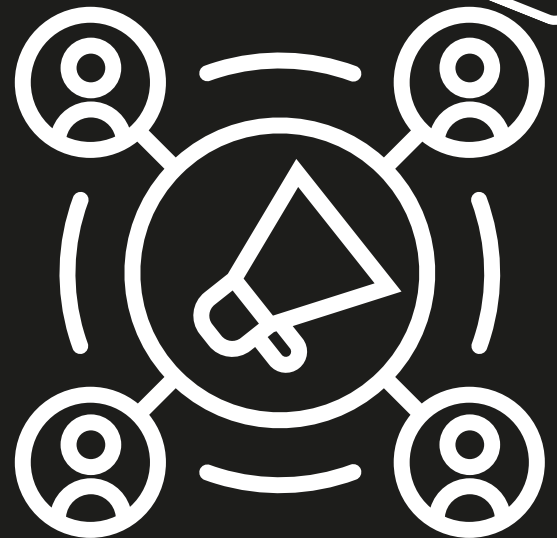
WHO?

The internship program is open to high school and college students, recent grads, and community members looking to build skills while giving back. We welcome applicants from all backgrounds—what matters most is passion and commitment to our mission.



INVOLVED PROGRAMS

- Food Rescue & Distribution
- Free Meals for Children (CACFP & SFSP)
- Youth Development Programming
- Community Empowerment Events



INTERNS WILL GAIN EXPERIENCE IN:

- Event planning & community outreach
- Nonprofit operations & fundraising
- Social media & communications
- Direct service at community events
- Social justice strategies

We have previously partnered with Education Is Key to provide **scholarships** for our interns



COMMUNITY EMPOWERMENT

Community is important. It's a place that brings comfort, safety, and support. Our community-wide events bring people from all walks of life together, strengthening the bonds between them to provide opportunities and resources to those in need.

COMMUNITY EVENTS

- DISASTER RELIEF
- DISTRIBUTION DRIVES
- KOBE DAY – ANNUAL BACK TO SCHOOL BACKPACK GIVEAWAY



SUPPORTING COMMUNITIES DURING THE LA WILDFIRES

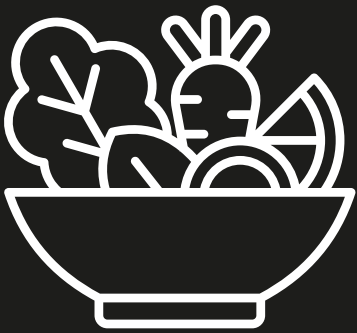
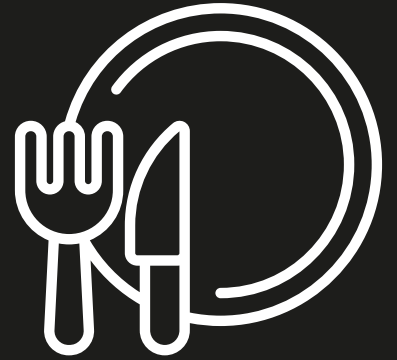
During the Los Angeles wildfires, volunteers stepped in at critical moments—supporting evacuation shelters, assisting displaced families, organizing essential supplies, and ensuring food, water, and basic necessities reached those most impacted. Their presence provided not only logistical support, but also comfort and stability during an uncertain time.

DISTRIBUTION CENTERS & DRIVE-THRU EVENTS

From early mornings at distribution centers to high-volume drive-thru distributions, volunteers helped sort, pack, and distribute food and essential items to families across Los Angeles. Their efforts ensured smooth operations, efficient service, and welcoming environments for community members seeking support.

284,557

MEALS SERVED

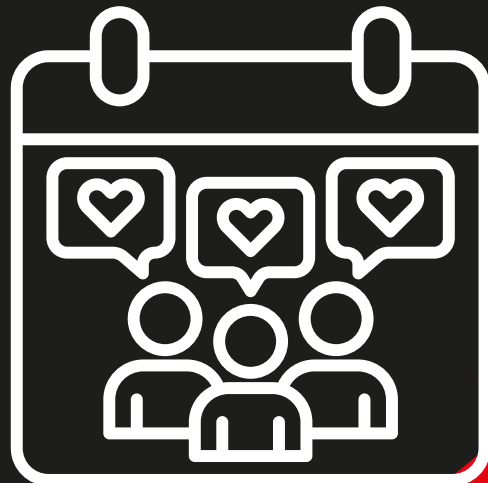


1,143,121

POUNDS OF FOOD RESCUED

50 Meal Sites

22 Community Events



IMPACT LA

YEAR 2025

OUR IMPACT IN 2025

68.75%

PARTICIPANTS FROM
HIGH-NEED ZIP CODES

10,879

HOUSEHOLDS
SERVED

17,029

YOUTH SERVED



8.24

KOBE DAY! BACK TO SCHOOL GIVEAWAY

Kobe Bean Bryant’s legacy extends far beyond basketball. Known for his discipline, resilience, and deep commitment to family and community, he showed the world what it means to pursue excellence with purpose. The “Mamba Mentality” continues to inspire generations to lead with focus, passion, and intention.

In honor of his life and impact, we host our annual Kobe Day celebration, bringing the community together through a Back to School event that uplifts youth, supports families, and carries forward the values Kobe embodied: hard work, generosity, and love for community.



3000+

EVENT ATTENDEES
IN 2025

1800+

BACKPACKS WITH SCHOOL
SUPPLIES DISTRIBUTED

500

PAIRS OF NEW
TENNIS SHOES

71

FREE HAIRCUTS
FOR STUDENTS

300

BAGS OF
GROCERIES

1567

DIAPERS TO
PARENTS

1500+

PIECES OF CLOTHING
FOR ALL AGES

GOALS FOR 2026

FOOD DISTRIBUTION

350,000+ MEALS
60 MEAL SITES

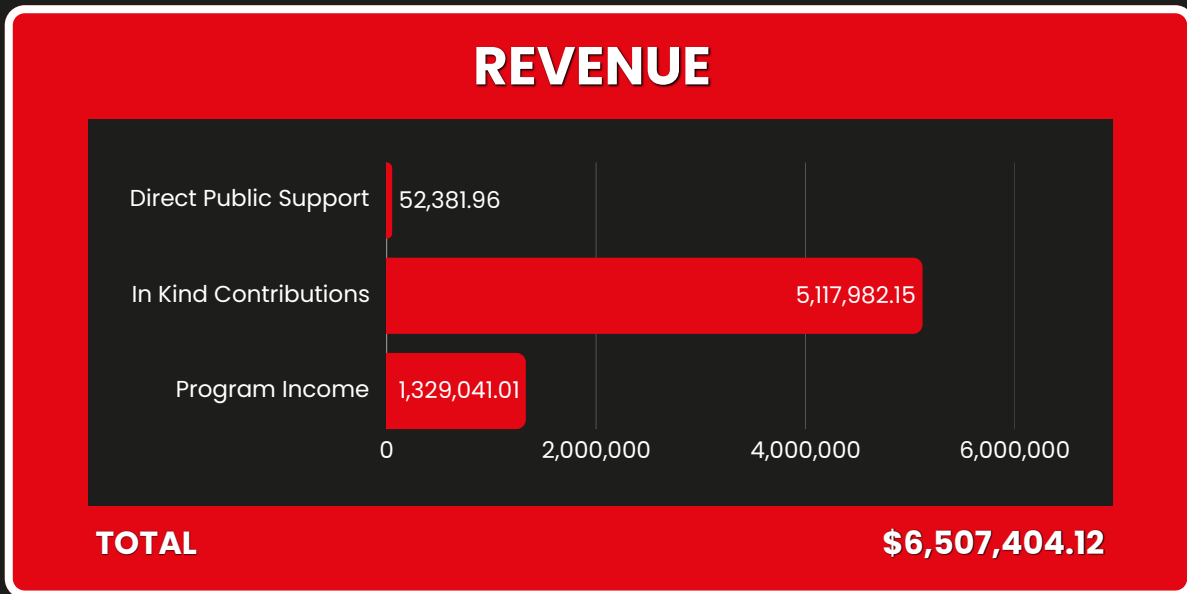
COMMUNITY EMPOWERMENT

SERVE... 19,500 YOUTH
12,500 HOUSEHOLDS
26 COMMUNITY EVENTS
45 PARTNER ORGANIZATIONS
9,000 VOLUNTEER HOURS

ENVIRONMENTAL JUSTICE

RESCUE 1,300,000 POUNDS OF FOOD
PREVENT 335 METRIC TONS OF GHG EMISSIONS
CONSERVE 2.3 BILLION GALLONS OF WATER RESOURCES
75% OF PARTICIPANTS FROM HIGH-NEED ZIP CODES

2025 FINANCIAL REPORT



PAYROLL EXPENSES

\$39238.77

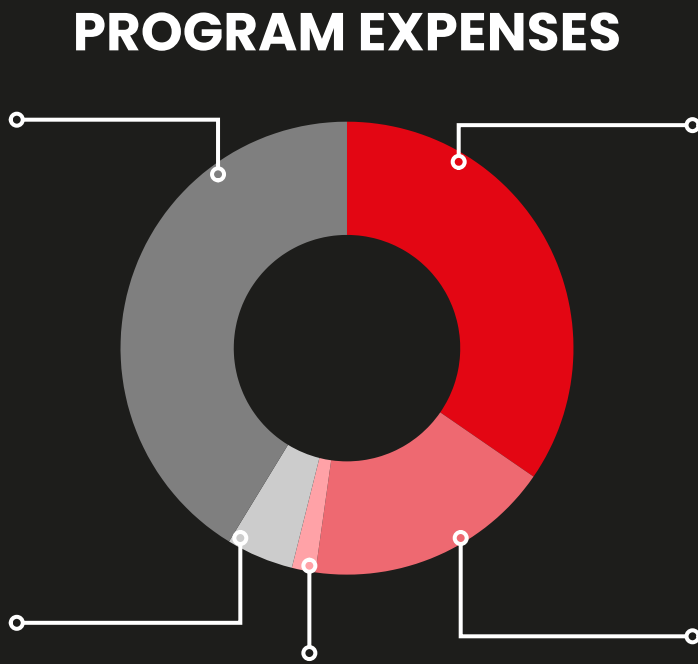
- Meals
- Program Expenses
- Advertising & Marketing
- Distribution Giveaways
- Food Distribution & Vendors
- State Deductions
- Wages

INSURANCE

\$4568.46

- Liability, D and O
- Workers Comp

TOTAL REVENUE	\$6,507,404.12
TOTAL EXPENSES	\$6,464,449.00
NET	\$42,955.12



FACILITIES & EQUIPMENT

\$1,605.00

- Equip Rental & Maintenance

ADMINISTRATIVE OPERATIONS

\$32890.58

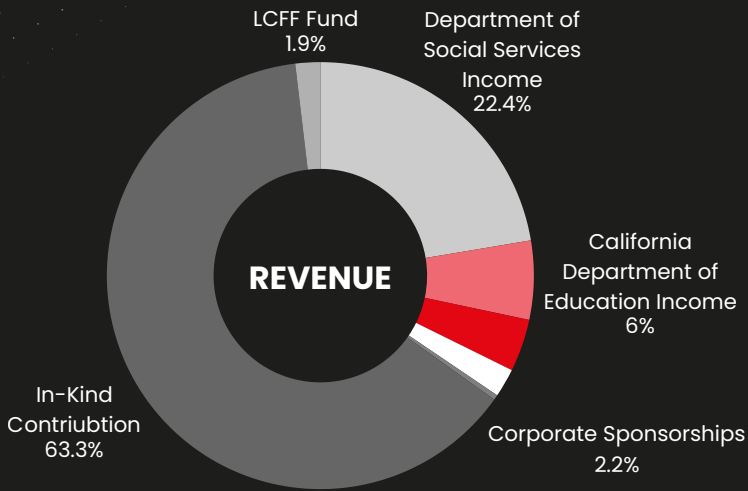
- Bank charges & Fees
- Business Registration Fees
- Telephone, Telecommunications
- Postage, Mailing
- Shipping Service
- Printing and Copying
- Software & apps
- Office Supplies

CONTRACT SERVICES

\$16759.74

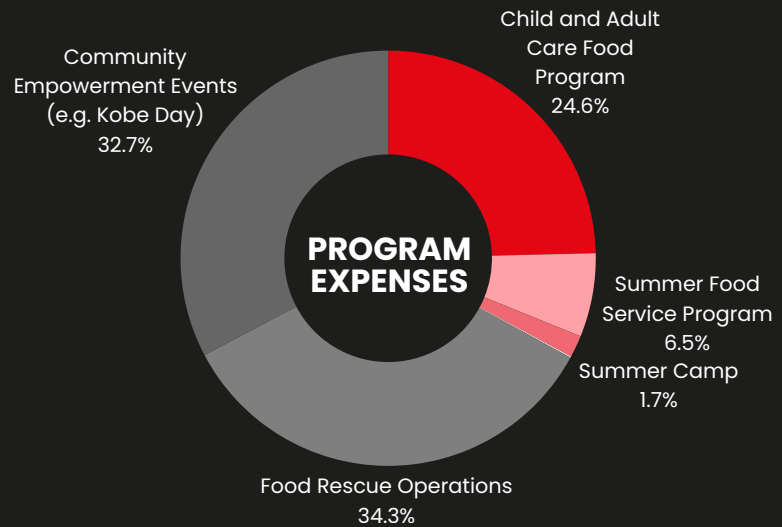
- Auto Insurance
- Automotive Expense
- Charity & Donations
- Accounting Fees
- Contract labor
- Legal Fees

2026 PROJECTED BUDGET



Department of Social Services Income	\$1,069,597.33
California Department of Education Income	\$285,807.00
Grants & Foundation Support	\$190,000.00
Corporate Sponsorships	\$103,847.00
Individual Donations & Fundraising	\$18,500.00
In-Kind Contribution	\$3,026,686.00
LCFF Fund	\$90,000.00

REVENUE \$4,784,437.33



Child and Adult Care Food Program	\$1,155,735.05
Summer Food Service Program	\$306,191.17
Summer Camp	\$80,933.50
Social and Emotional Program	\$3,842.00
Food Rescue Operations	\$1,612,540.00
Community Empowerment Events (e.g. Kobe Day)	\$1,536,492.00

PROGRAM EXPENSES \$1,659,310.21

TOTAL REVENUE \$4,784,437.33
TOTAL EXPENSES \$4,774,286.24

NET \$10,151.09

Admin Personnel	\$73,552.53
Office Supplies	\$3,000.00
Insurance	\$2,000.00

The Co-Founders

Impact LA is guided by a committed Board of Directors that provides strategic oversight, fiduciary governance, and community leadership in support of our mission to advance food equity and community empowerment across Los Angeles.

Our board brings together professionals and community leaders with diverse lived experiences and expertise across nonprofit leadership, finance, public policy, fundraising, and community engagement. Together, they ensure Impact LA operates with integrity, accountability, and long-term vision.



COURTNEY LOCKRIDGE

Executive Director & Co-Founder

A California native, Courtney's commitment to service and community was shaped early in her life and has guided her career in the nonprofit and social impact space. With a deep desire to uplift underserved populations and give back to the city that raised her, she co-founded Impact LA to build programs that address systemic needs and create lasting community impact.

EMERITA FLORES

Program director & Co-Founder

With a career grounded in passion for social justice and educational support, Emerita has spent nearly two decades working to improve youth outcomes through expanded learning and nutrition programs. Before founding Impact LA, she held key roles in nonprofit and after-school program management, including leadership positions with Boys & Girls Clubs and expanded learning services.



BOARD OF DIRECTORS



DOREEN M. PETERS

Doreen brings more than three decades of public service and business administrative leadership to her role as Secretary of the Board of Directors at Impact LA.

CEDRIC LINTON

Cedric brings over seven years of experience leading organizational and business transformation initiatives across both corporate and nonprofit sectors.



ANA SANDOVAL

Ana brings over 14 years of experience in nonprofit management, with a strong track record of building, scaling, and leading high-impact programs that align with organizational strategy and community needs.



MATHEW VARA

Mathew Vara is a dedicated accountant and community-minded professional with deep experience in financial services, business development, and nonprofit support.





VOLUNTEERS: THE HEART OF OUR IMPACT

Volunteers are the backbone of Impact LA's work. In moments of crisis and throughout everyday community support efforts, their commitment, compassion, and leadership make it possible for us to respond quickly, effectively, and with dignity.

IMPACT

LA
CL

PARTNERS, FUNDERS & SUPPORTERS



Good+Foundation



IMPACT 

Donate

Donations are tax-deductible!

Partner

Volunteer

**LET'S MAKE
AN **IMPACT**
TOGETHER!**

**Impact LA, Inc
Headquarters**

811 W 7th Street Suite 1236
Los Angeles, CA 90017

Phone Number
(213) 928-1040

Email Address
connect@impactla.org

EIN
84-3797925