

Cell Defender® Mounting Options

C200 Model

01/13/25

Page 1

Thank you for purchasing the Cell Defender®
Cobb River Design® LLC
16159 607th Ave.
Mapleton, MN 56065
www.CobbRiverDesign.com
Cobbriverdesign@gmail.com

Parts List:

| Qty. | Description |
|------|-------------------------------|
| 1 | Stainless Steel Cell Defender |
| 1 | Stainless Steel L-Bracket |
| 1 | 5/16" carriage bolt |
| 1 | 5/16" hex bolt |
| 2 | 5/16" lock washers |
| 3 | 5/16" flat washers |
| 2 | 5/16" nuts |
| 1 | 1/4" U-bolt |
| 2 | 1/4" lock washers |
| 2 | 1/4" nuts |
| 1 | Mounting Instructions Sheet |

Shown below is the basic installation into an existing horizontal surface. Install the carriage bolt from the top into the square hole. Add flat washer, lock washer and nut on bottom of bolt under the surface of your equipment.

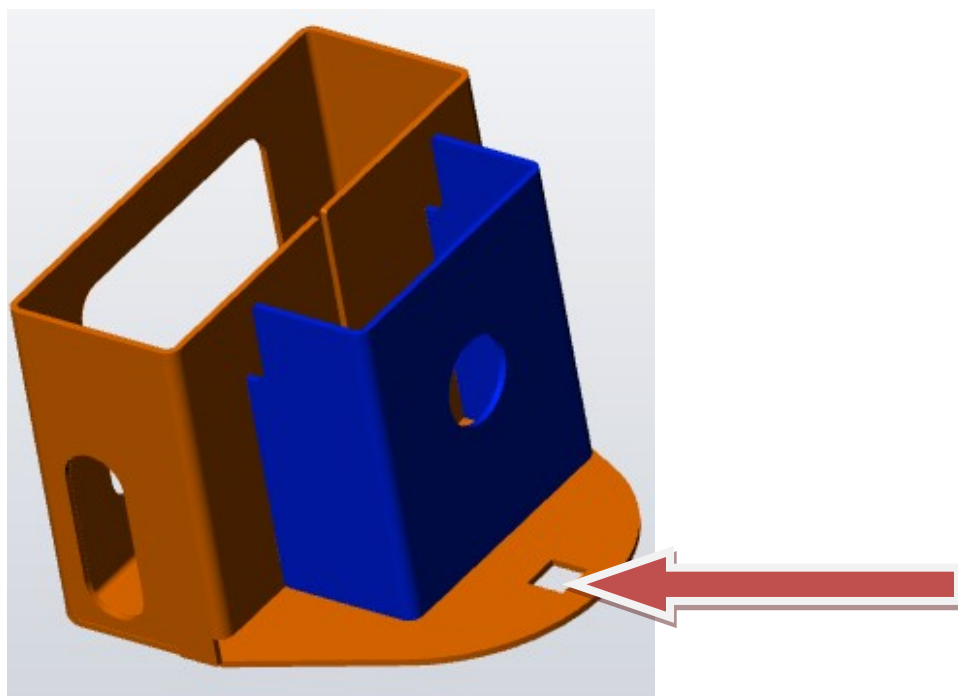


Figure 1

Installation using the bracket (ex: mounting to a vertical surface)
Install the 5/16" carriage bolt attaching the Cell Defender to the bracket.
Note: bracket can be mounted either up or down (up shown).

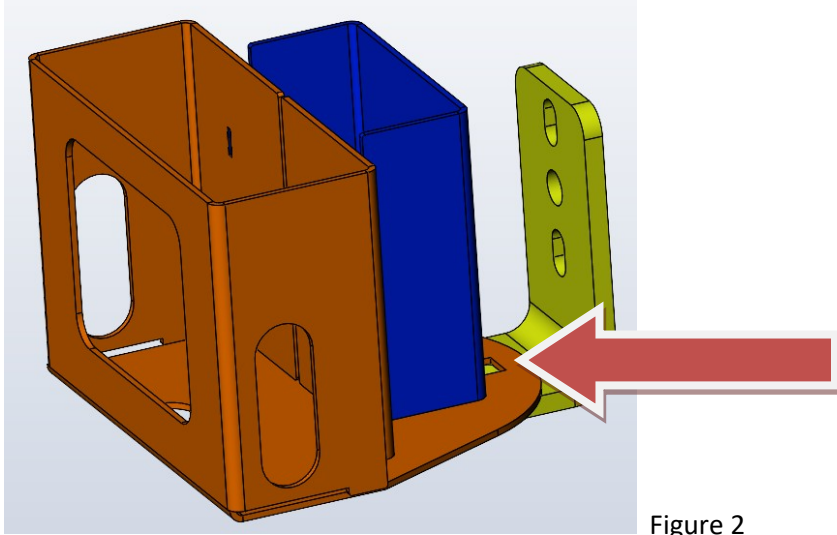


Figure 2

Installation using the bracket (ex: mounting to a round bar or pipe)
Use the U-bolt to attach the Cell Defender to a round bar or pipe utilizing the 2 slots in the bracket. Add lock washers & nuts.
Note: bracket can be mounted either up or down (up shown).

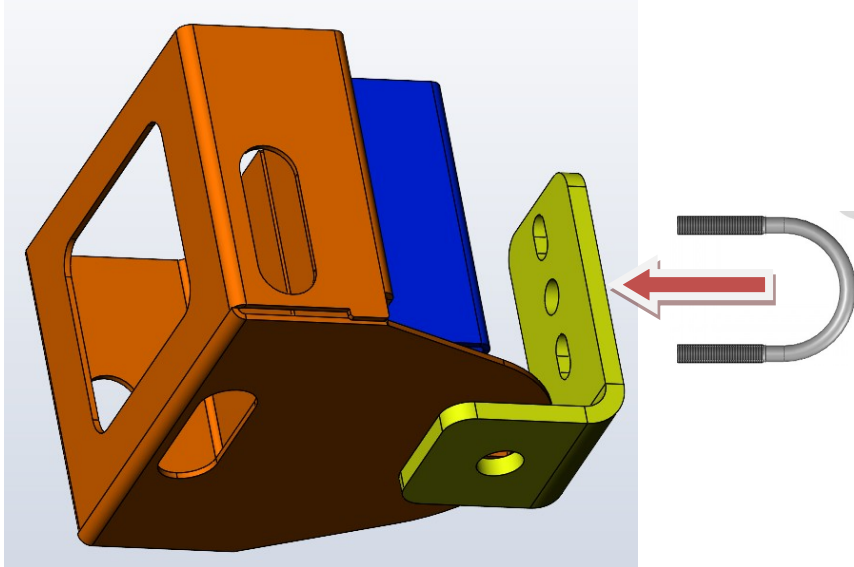


Figure 3

There are many other possible mounting configurations that can be utilized depending on your equipment.
Make sure to mount the Cell Defender so it does not interfere with any controls on your equipment or any sight lines.

Note: Cobb River Design LLC is not responsible for any loss, damage or injury that may occur during the use of this product.