



energize Your LIFE  
WITH LESTIC VING

NOT ONLY LOCATED. closer to necessities. closer to  
offices. closer to schools. have modern  
amenities. gated community public transport.





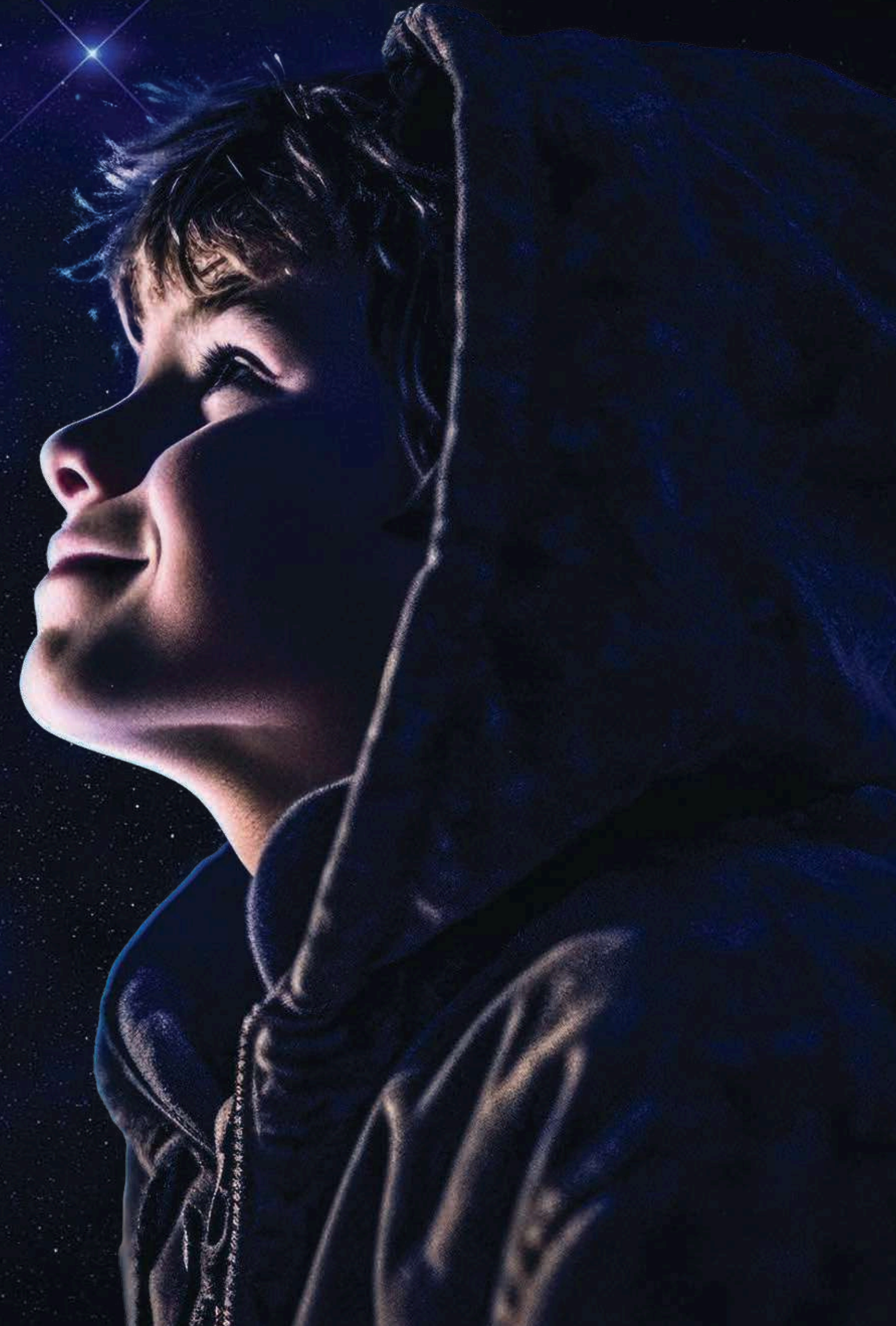
se Above the Ordinary. Discover  
Elevated living in Our gh se  
Tower. With Stunning Views,  
Modern Amenities, and Unmatched  
Convenience, Your Skyward  
Journey Begins re. Welcome to  
a fe of xury and  
Sophistication, Where  
Every Floor is a w  
Perspective and Every  
Moment a Thri□.  
Experience gh se  
ving at its Finest.







Make  
Friends  
with  
starS





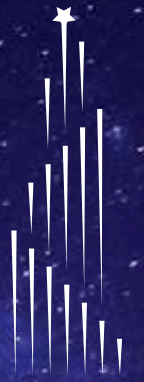


wake  
up to  
positivity





EXPERIEN  
ELEVATED LIVING

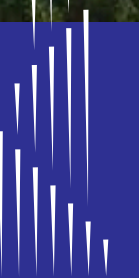


ABHEE  
**Celestial City**  
A STARDUST SYMPHONY OF LUXURY LIVING





Epicenter of CONVENIEN





# ergy Centers



## AMENITIES

- GRAND ENTRY PLAZA
- VISITOR CAR PARKING
- JOGGING TRACK
- ENTRANCE WATER FEATURE
- ELDER SEATING
- FLORAL GARDEN
- BUS BAY
- CENTRAL COURTYARD
- POOL SIDE PARTY LAWN
- POOL DECK
- KIDS AND ADULTS SWIMMING POOL
- POOL CHANGING ROOM AND TOILETS
- MULTIPURPOSE MAIDAN (PARTY, GAMES ETC;)
- KIDS PLAY AREA ON EPDM MAT
- AMPHITHEATRE FACING MAIDAN
- KIDS PLAY AREA IN SAND PIT WITH CLIMBING WALL
- CRICKET PRACTICE PITCH
- MULTIPURPOSE COURT
- OUTDOOR GYM
- MEDITATION WITH YOGA DECK

## CLUB HOUSE

- BADMINTON COURT
- SQUASH COURT
- RECEPTION LOBBY + WAITING AREA
- GROCERY STORE
- MEDICAL STORE
- GUEST ROOMS
- CLUBHOUSE CENTRAL COURTYARD
- SPA/SALOON
- DAY CARE
- HEATED POOL WITH CHANGING ROOMS & TOILET
- GYM
- INDOOR GAMES
- CAFE
- PARTY HALL





# eNERGISE YOUR BODY, MIND AND SOUL

WITH OUR WORLD CLASS MODERN AMENITIES







Channel  
your energy







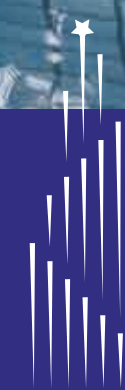
Find the  
Inner Peace



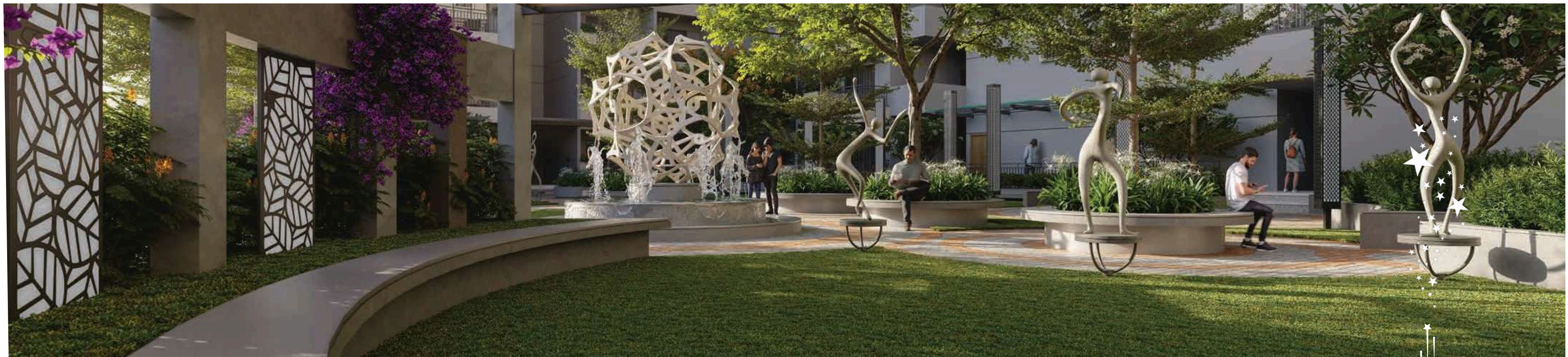
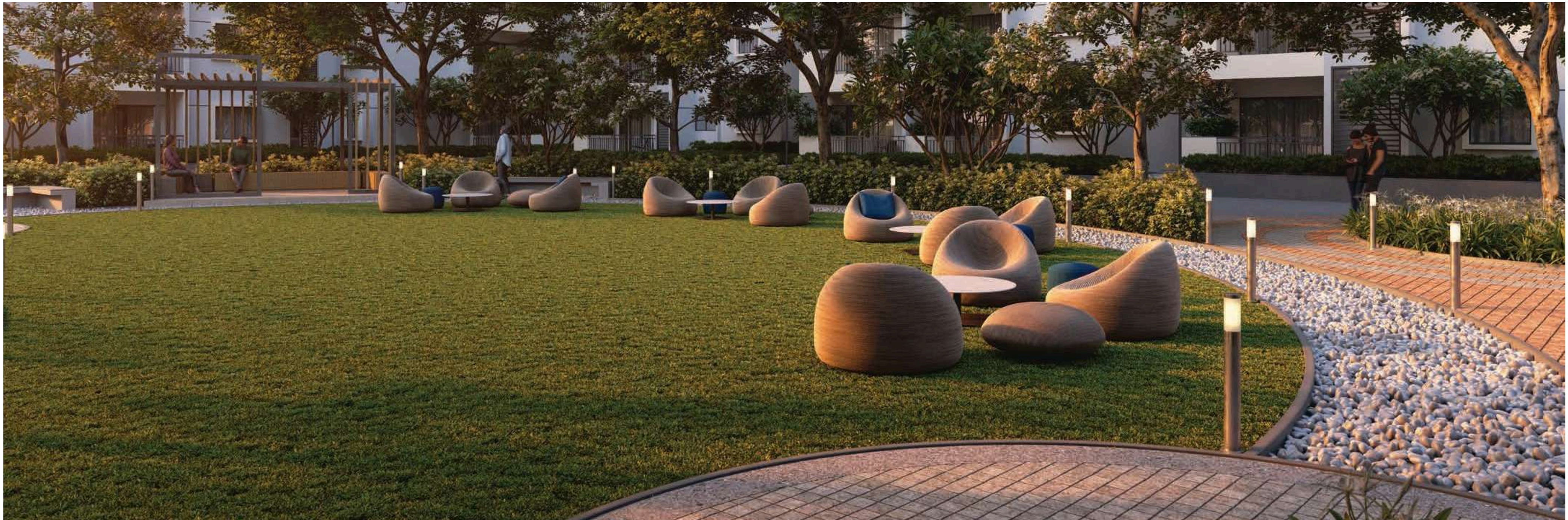




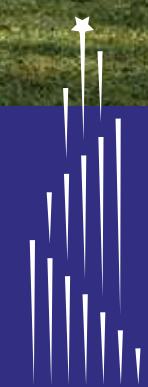
SWIMMING POOL



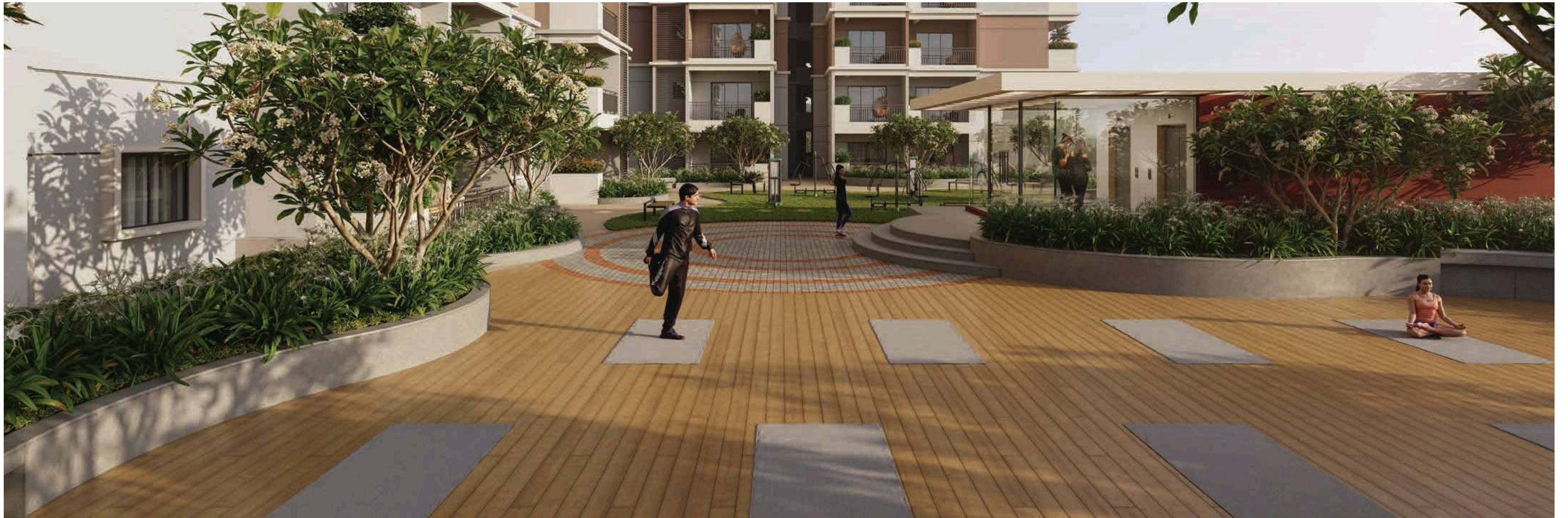




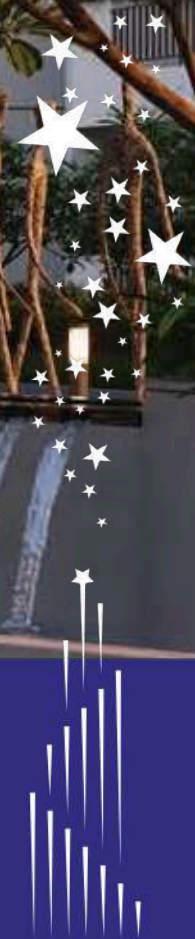
SITTING AREAS







YOGA & KIDS PLAY AREA







CRICKET & FOOTBALL GROUND







CAR PARKING & COURTYARD



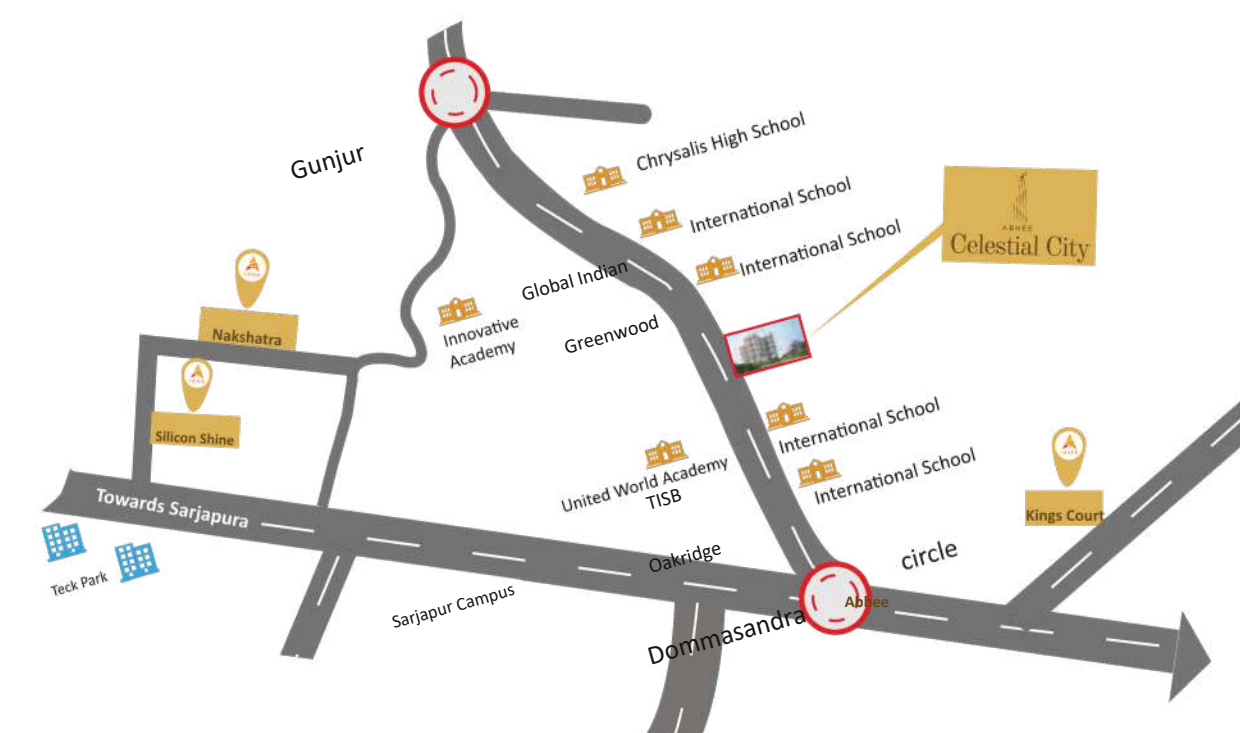




## TOP INTERNATIONAL SCHOOLS



- GREEN WOOD HIGH SCHOOL - 50 M
- INVENTURE ACADEMY - 500 M
- GLOBAL INDIAN INTERNATIONAL - 600 M
- THE INTERNATIONAL SCHOOL BANGALORE - 1.3 KM
- OAKRIDGE INTERNATIONAL SCHOOL - 2.3 KM
- SILVER OAKS INTERNATIONAL SCHOOL - 3.4 KM
- DELHI PUBLIC SCHOOL - 7 KM
- NATIONAL PUBLIC SCHOOL - 7 KM





- SWASTIK HOSPITAL - 2KM
- SRILAXMI MULTI-SPECIALITY - 2 KM
- KHEMA HOSPITAL - 4.4 KM
- SNEHADAAN HOSPITAL - 5.2 KM
- COLUMBIAASIA HOSPITAL WHITEFIELD - 7.5 KM
- Belenus Champion Hospital - 7.5 KM
- SAKRA WORLD HOSPITAL - 10KM
- MOTHERHOOD HOSPITAL - 10 KM
- MANIPal HOSPITAL, SARJAPUR - 10.2 KM
- CLOUDNINE HOSPITAL - 11.2 KM
- narayana HOSPITAL - 16 KM



## WORLD CLASS healthcare FACILITIES







## shopping & entertainment

- CITY HYPER MART - 1.5KM
- INDIA FLIGHT SPORTS ACADEMY - 2 KM
- SANTOSH HI MART - 3 KM
- KIDZ TOPIA AMUSEMENT PARK - 4.8 KM
- D-MART - 6 KM
- DECATHLON - 6.6 KM
- BRAND FACTORY, SARJAPUR - 8 KM



- WIPRO SEZ - 8.8 KM
- RGA TECH PARK - 9.2 KM
- embassy tech village - 10.5 KM
- MICROSOFT PRESTIGE FERNS - 11 KM
- WIPRO TECHNOLOGIES - 11.8 KM
- SALARPURIA SOFTZONE - 13.6 KM
- ECOSPACE - 10 KM



offices &  
IT Parks



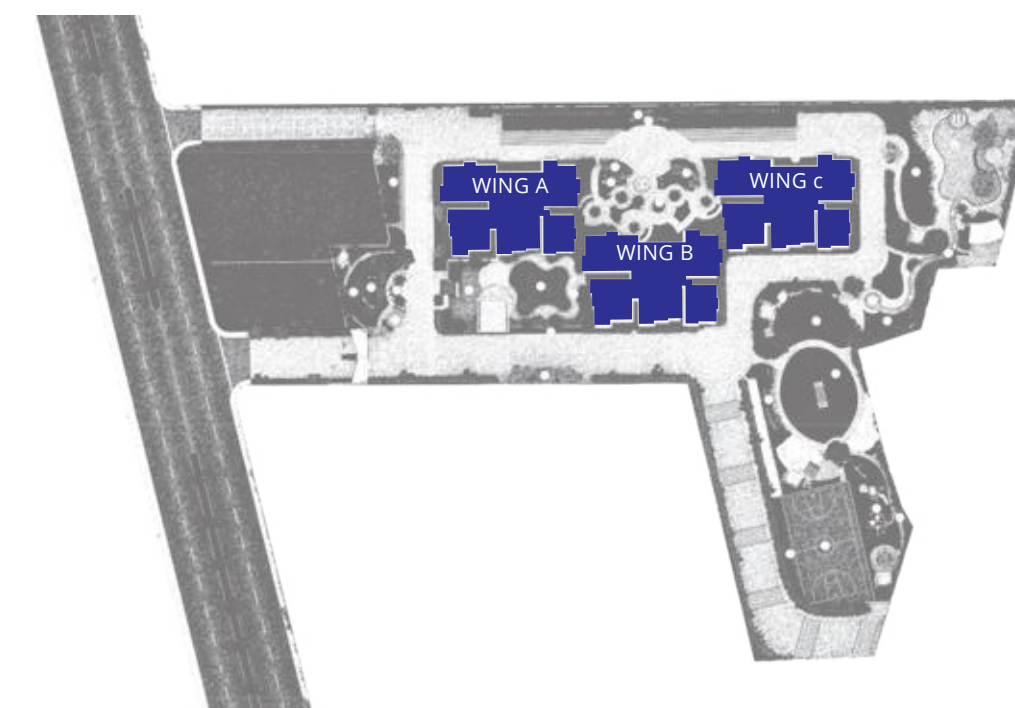
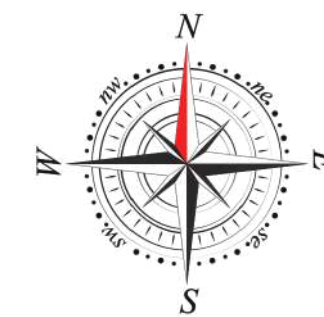




MASTER P N





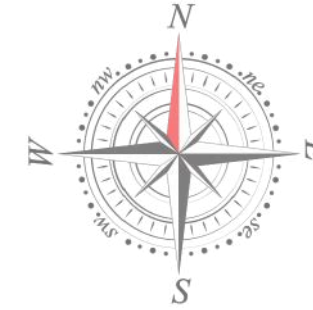


WING A,B&C



# 3 b h k east facing

1950 Sq. Ft.



Type A1,B6,C12  
(2nd Floor to 26th Floor)

UNITS : WING A : A201

TO A2601

WING B : B206 TO B2606

WING C : C212 TO C2612

CARPET AREA : 1246 SFT

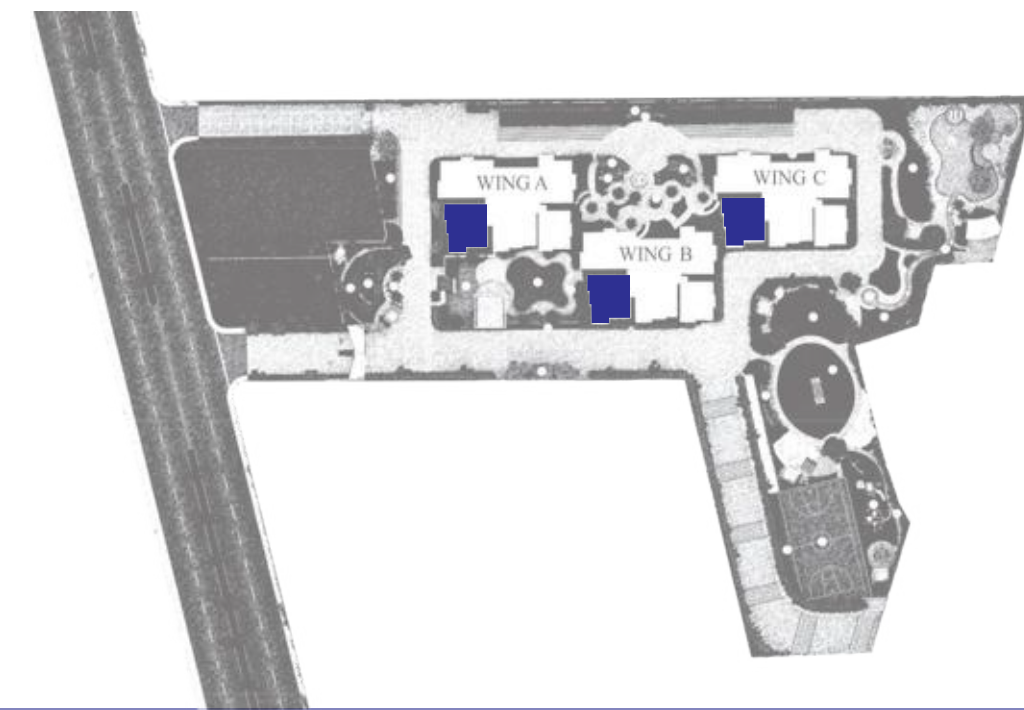
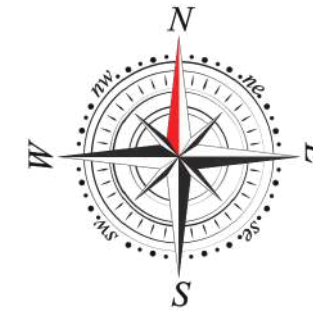
SBA  
**1950**<sub>SFT</sub>





# 3 b h k east facing

1990 Sq. Ft.



## Type A3,B7,C11

(2nd Floor to 26th Floor)

### UNITS :

WING A : A203 TO A2603

WING B : B207 TO B2607

WING C : C211 TO C2611

CARPET AREA : 1208 SFT

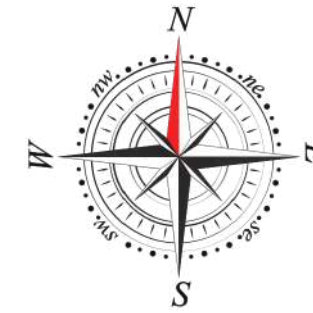
SBA  
**1990**<sub>SFT</sub>





# 2.5 b h k west facing

1680 Sq Ft.



## Type A2,B10,C13

(2nd Floor to 26th Floor)

UNITS : WING A : A202 TO

A2602

WING B : B210 TO B2610

WING C : C213 TO C2613

CARPET AREA : 1045 SFT

SBA  
**1680**<sub>SFT</sub>

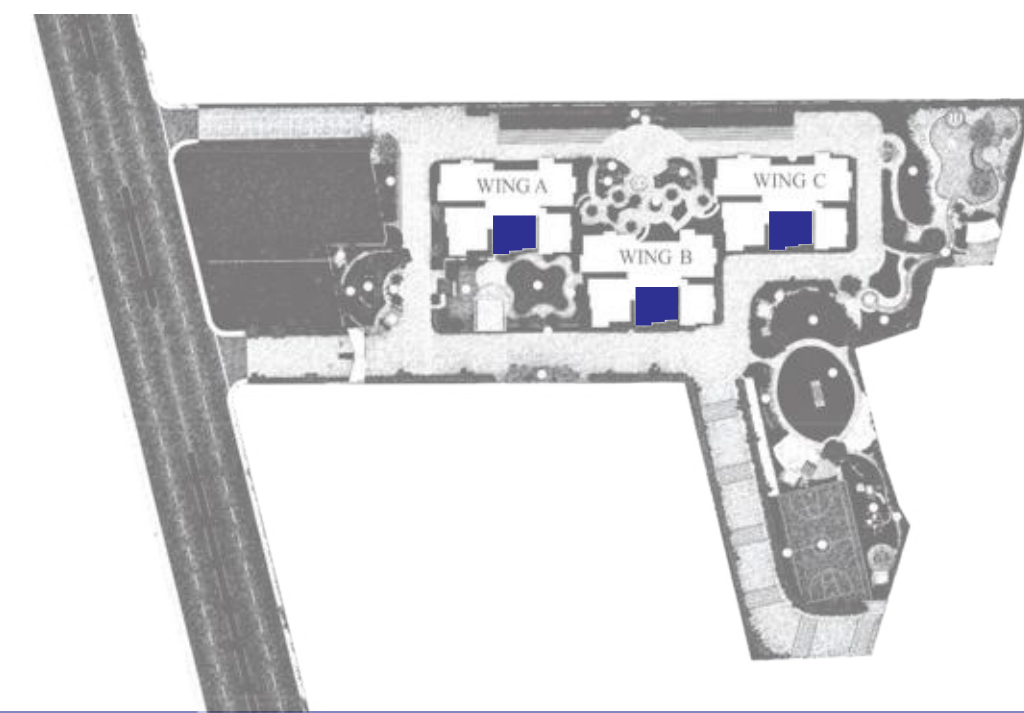
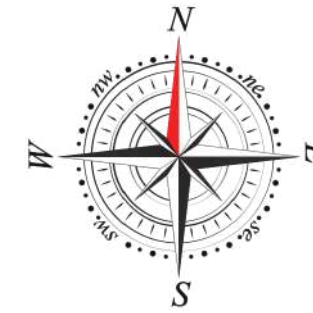
Entry





# 2.5 b h k north facing

1685 Sq. Ft.



Entry

## Type A4,B8,C15

(2nd Floor to 26th Floor)

### UNITS :

WING A : A204 TO A2604

WING B : B208 TO B2608

WING C : C215 TO C2615

CARPET AREA : 1057 SFT

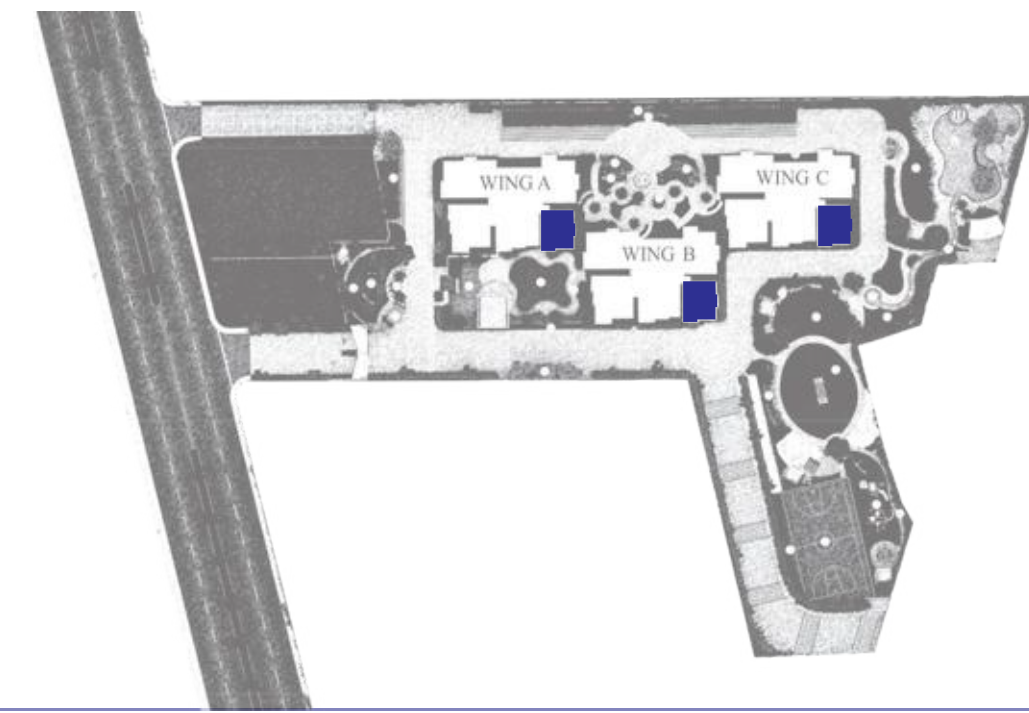
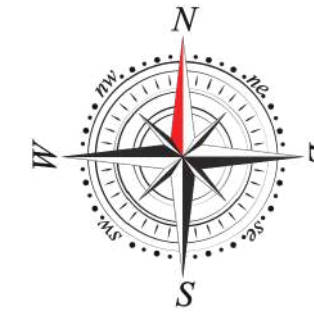
SBA  
**1685** SFT





# 2 b h k north facing

1345 Sq. Ft.



## Type A5,B9,C14

(2nd Floor to 26th Floor)

### UNITS :

WING A : A205 TO A2605

WING B : B209 TO B2609

WING C : C214 TO C2614

CARPET AREA : 842 SFT

SBA  
**1345** SFT





# Celestial City Chronicles

## Architectural Marvels Under the Stars

Our commitment to excellence reaches celestial heights. Every detail, every material, and every finish is meticulously chosen to ensure that your living experience is nothing short of extraordinary. Allow us to unveil the celestial specifications that define the very essence of our cosmic abode.

### SUPER STRUCTURE

RCC shear wall-framed structure.

### WALLS

EXTERNAL WALLS:

Aluminium formwork and shear wall technology.

INTERNAL WALLS:

Aluminium formwork and shear wall technology.

### CEILING FINISHES

DRAWING, DINING, LIVING, BEDROOMS, KITCHENS AND BALCONY : Smoothly finished with putty and premium emulsion paint.

BATHROOMS : Grid Ceiling to cover all service lines.

### WALLS FINISHES

DRAWING, DINING, LIVING, BEDROOMS, KITCHENS AND BALCONY : Smoothly finished with putty and premium emulsion paint.

BATHROOMS : Tiles cladding up to 7 feet height to be provided.

### FLOORING

DRAWING, DINING, LIVING, BEDROOMS, KITCHENS: 800 X 800 mm size Vitrified tiles of reputed brands with spacer joint.

BALCONY / BATHROOMS / UTILITY : Anti-Skid tiles reputed brands

CORRIDORS : Vitrified tiles of reputed brands with spacer joint.

STAIRCASE : Natural Stone / Granite.

### WINDOWS / GRILLS

All windows are of UPVC Glazed Sliding shutters and mosquito mesh shutters with necessary hardwares and M.S Grills.

### JOINARY WORKS / DOORS

MAIN DOOR : African Teak Wood frame, finished with Golden Teak veneer solid flush door shutter and necessary reputed hardwares.

BEDROOM DOORS :

Beachwood frame, solid flush doors finished with beach veneer and necessary reputed hardwares.

BATHROOM DOORS : Beachwood frame, solid flush doors finished with beach veneer on front side and white laminate on back side with necessary reputed hardwares.

BALCONY DOORS : UPVC Glazed French Sliding Door with mosquito mesh provision.

### ALL BATHROOMS

Counter-Top type washbasin with single lever basin mixer. Wall mount EWC with Concealed flush tank.



Single level bath and shower mixer.

Provision for geysers in all bathrooms.

All sanitary and CP fittings : Jaguar Brand.

### KITCHEN

Kitchen wall tile dado upto 2 feet height.

Provision for water purifier.

Provision for washing machine in utility.

### ELECTRICAL

Concealed copper wiring of reputed make.

Power outlet for air-conditioners in all bedrooms and living.

Power outlets for geysers in all bathrooms and utility.

Power outlets for chimney,

Hob, refrigerators, microwave oven, mixer/grinder, exhaust, dishwasher in kitchen.

Washing machine point in utility area.

Single phase supply for each unit and individual meters.

Miniature circuit breakers (MCB) for each distrubution board of reputed make.

Modular switches of reputed make.

### TV / TELEPHONE /

### INTERNET

Provision for Fiber To The Home With Wi-Fi, Internet, DTH / intercom.

Telephone & Internet:

Drawing Room and Master-Bedroom.

Television Points: Living and Master-Bedroom.

### WATER-PROOFING

Waterproofing shall be provided for all bathrooms, balconies, utility area and terrace.

### SECURITY

Sophisticated round the clock

security system.

Comprehensive security system with Cameras in appropriate locations.

### FIRE SAFETY

Fire alarm, automatic sprinklers and wet risers as per Fire authority Regulations.

### POWER BACK-UP

DG backup up to 1.2 kW for 2BHK, 2.5BHK and 1.5 kW for 3BHK except for AC's and Geysers.

Additional 100 % power back-up for amenities, lifts, water pump and common area lightings.

### LIFTS AND LIFT LOBBIES

High speed lifts of reputed make.

Lift lobby cladding with vitrified tiles / Granite.

### WTP & STP

Treated water will be made available through water softening for domestic purpose.

A sewage treatment plant of adequate capacity as per norms will be provided inside the project.

Treated sewage water will be used for the landscaping and flushing purpose.

### CAR PARK

well designed

to suit the number of car parks required.

Parking signage and equipment at required places to improve driving comfort.

Dedicated space for cars charging will be provided.

### PNG

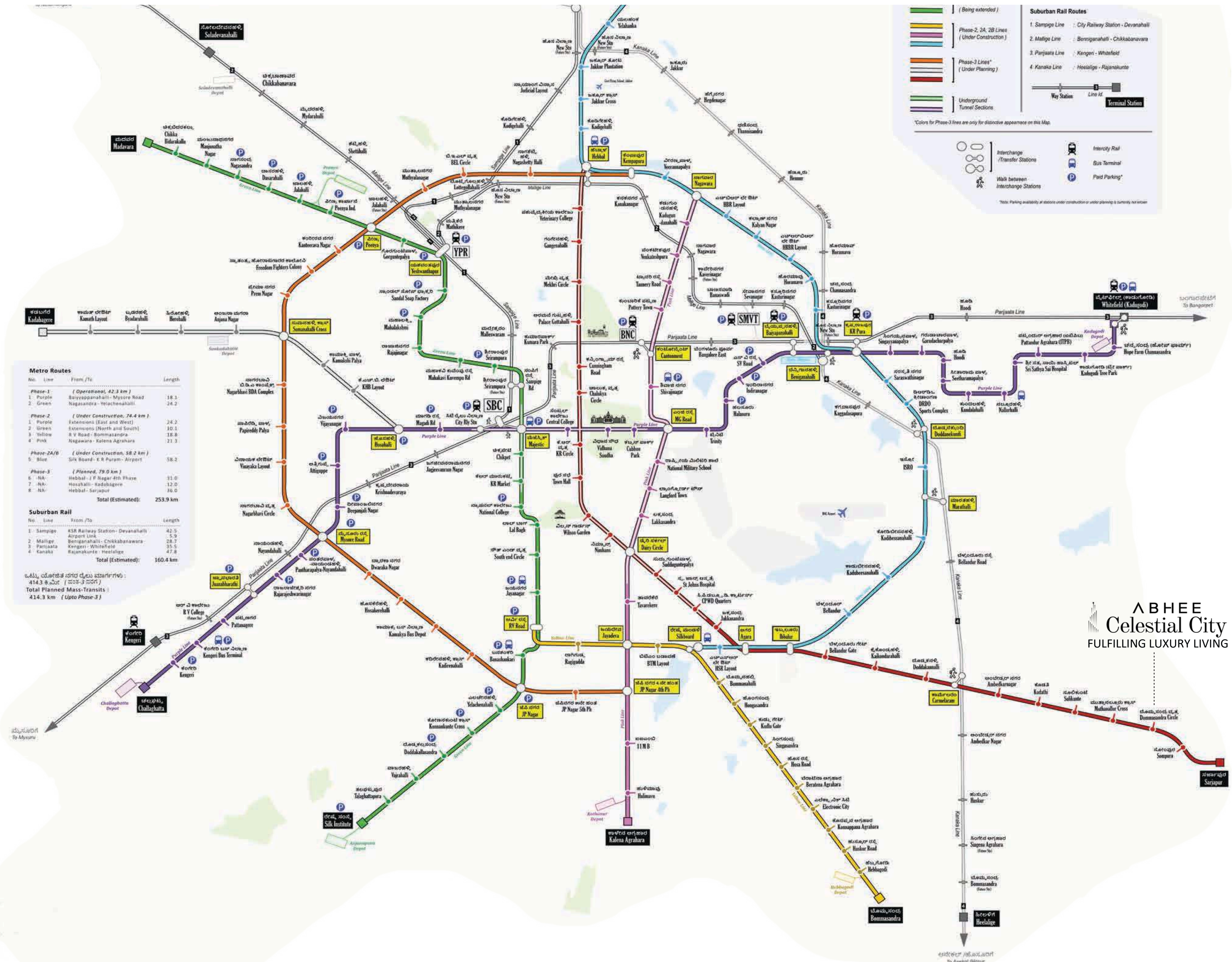
Provision for supply of gas from a piped natural gas system.



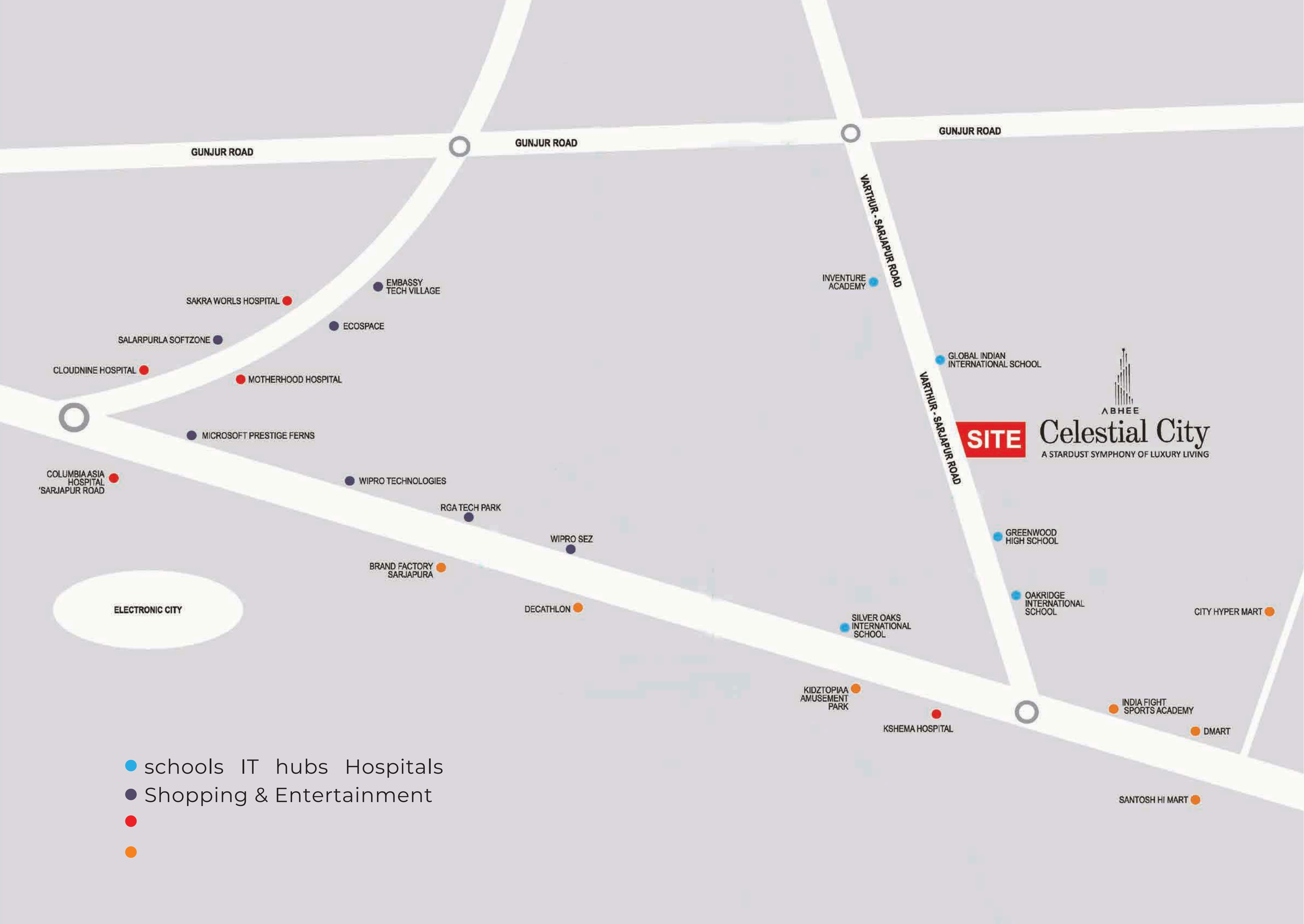
## SPECIFICATIONS



# BANGALORE METRO AND SUBURBAN RAILWAY STATION.











# ABHEE VENTURES PRIVATE LTD

With a vision of the future, We build homes that stay timeless...

Abhee Ventures envision the future, but never lose sight of the enduring value of a well-built home. We translate visionary ideas into timeless homes that adapt and evolve with your life. Since 2008, Abhee Ventures has blossomed from a dedicated team into one of Bengaluru's leading developers. We're passionate about crafting exceptional properties around South India that inspire, while fostering vibrant communities where life thrives. When you choose Abhee Ventures, you're not just choosing a home, you're choosing the best – a partner dedicated to exceeding expectations and creating a place where happiness and connection flourish.

## AN EXPERIENCE IN NUMBERS

2500+

Happy Families



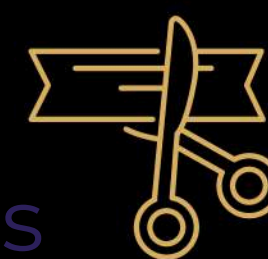
16

Projects Completed



6

Ongoing Projects



3

Mega Projects  
Launching Shortly



# ONGOING PROJECTS



Abhee Celestial City, Sarjapura Road  
Adj. to Greenwood International High school  
2 & 3 Bhk Luxury apartments



Abhee Silicon Shine  
Sarjapura Road, Opp. Wipro Sez  
1, 2, 3 & 4 Bhk Luxury apartments



Abhee Pride  
Chandapura ( Near E-City )  
2 & 3 Bhk Luxury apartments



Abhee Riviera Royale  
HSR Ext. ( Haralur Road )  
2 & 3 Bhk Luxury apartments



Abhee Srishti Layout,  
Villa Plots  
Anekal Town, Hompalaghatta



Abhee Kings Court  
Sarjapura road, Chambenahalli  
2 & 3 Bhk Luxury apartments