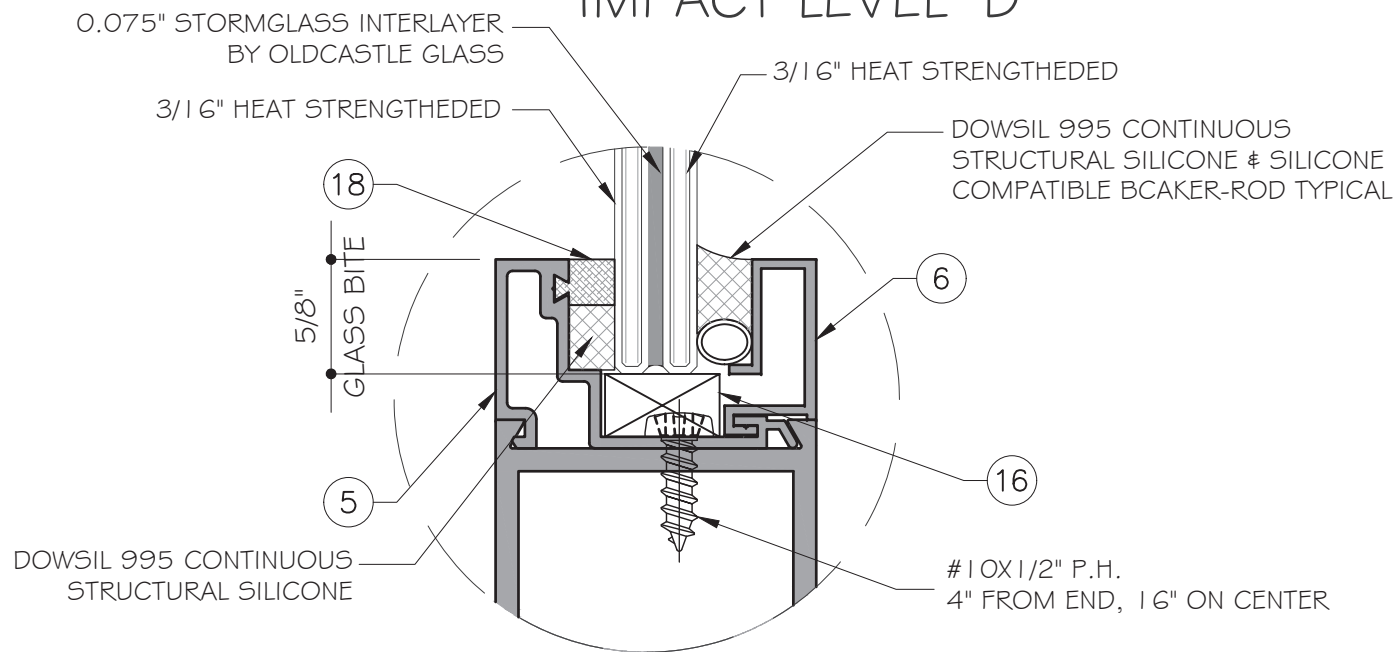


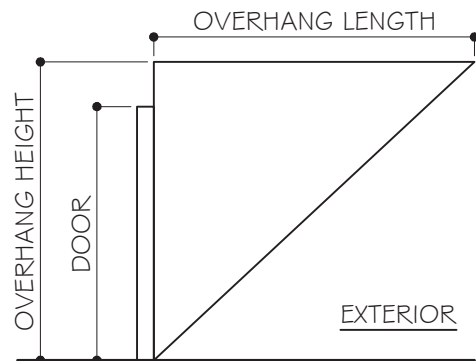
SERIES 350-MS OUT SWING DOOR LARGE MISSILE IMPACT (L.M.I.) IMPACT LEVEL "D"



NOTE:
GLASS COMPLIES WITH ASTM E1300-09
(3 SEC. GUSTS)

GENERAL NOTES:

- THIS PRODUCT HAS BEEN DESIGNED AND TESTED TO COMPLY WITH THE REQUIREMENTS OF THE 7TH EDITION FLORIDA BUILDING CODE (2020) INCLUDING HIGH VELOCITY HURRICANE ZONE (HVHZ).
- DOOR IS DESIGNED TO BE USED AT LARGE MISSILE AREA. SHUTTER IS NO REQUIRED. DOOR NOT APPROVED FOR WATER INFILTRATION TO BE PROTECTED BY OVERHANG OR CANOPY.



$$OH \text{ RATIO} = \frac{\text{OVERHANG LENGTH}}{\text{OVERHANG HEIGHT}} \geq 1$$

- ANCHORS SHALL BE AS LISTED, SPACED AS SHOWN ON DETAILS. ANCHORS EMBEDMENT TO BASE MATERIAL SHALL BE BEYOND WALL DRESSING OR STUCCO.
- ANCHORING OR LOADING CONDITIONS NOT SHOWN IN THESE DETAILS ARE NOT PART OF THIS APPROVAL.
- MATERIALS INCLUDING BUT NOT LIMITED TO STEEL/METAL SCREWS THAT COME INTO CONTACT WITH OTHER DISSIMILAR MATERIALS SHALL MEET THE REQUIREMENTS OF THE 7TH EDITION FLORIDA BUILDING CODE (2020) SECTION AS APPLICABLE.
- METAL STRUCTURES BY OTHERS TO BE DESIGNED TO SUPPORT THE LOADS IMPOSED BY THIS GLAZING SYSTEM AND TO TRANSFER SUCH LOADS TO THE BUILDING MAIN STRUCTURE.
- ULTIMATE LOAD OBTAINED FROM ASCE 7-16, MULTIPLY BY 0.6 SHALL BE LESS THAN OR EQUAL TO MAX. DESIGN LOAD IN THIS DOCUMENT. THE DESIGN LOADS SHOWN IN THIS DOCUMENT ARE ALLOWABLE DESIGN LOADS.

INSTRUCTIONS:

USE CHARTS AS FOLLOWS.

- STEP 1:** DETERMINE DESIGN WIND LOAD REQUIREMENTS BASED ON WIND VELOCITY, BLDG. HEIGHT, WIND ZONE USING APPLICABLE ASCE 7-16 STANDARD.
- STEP 2:** SEE SHEET COVER FOR GLASS OPTIONS.
- STEP 3:** SEE SHEET E1 & E2 FOR DESIGN LOAD CAPACITY OF DESIRED GLASS SIZE BASED ON APPLICABLE WIND DURATION. SEE SHEET E1 & E2 FOR HARDWARE OPTION.
- STEP 4:** SEE ANCHOR TYPE ON SHEET A1. SEE SHEET E1 & E2 FOR ANCHOR SPACING.

ABBREVIATIONS AND SYMBOLS	
D.L.O. - DAYLIGHT OPENING	
F.H. - FRAME HEIGHT	
F.W. - FRAME WIDTH	
W/ - WITH	
W/O - WITHOUT	SECTION NUMBER
O.C. - ON CENTER	SHEET NUMBER

FL #32365

December 15th, 2020

MCY ENGINEERING, INC.
 GLAZING CONSULTANTS
 12781 MIRAMAR PARKWAY #301
 MIRAMAR, FL 33027
 F: 305.271.0117
 www.MCYEngineering.com mcy@mcyengineering.com

SERIES 350-MS OUT SWING DOOR

EMC WINDOWS AND DOORS, LLC.
 1356 W. 76TH STREET
 HIALEAH, FL 33014
 TEL. (305) 283-6280 EMCWindowsdoors@gmail.com

Rev. NO.	Date	Drawn By	Description

Drawn Date
06/18/2020

Scale

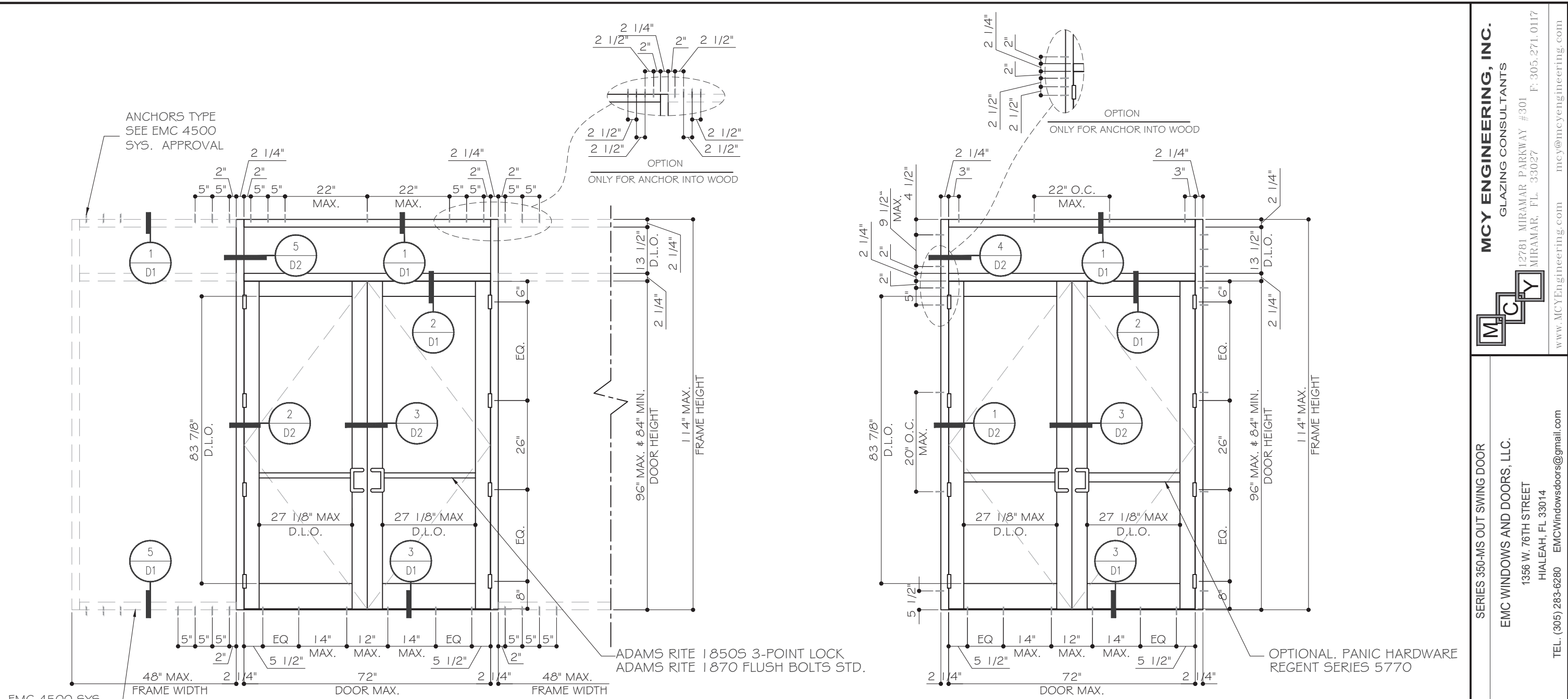
DRAWING NO.

AD20-23

COVER

Sheet No.

1 OF 8



TYPICAL ELEVATIONS

ADAMS RITE 1850S 3-POINT LOCK
ADAMS RITE 1870 FLUSH BOLTS STD.

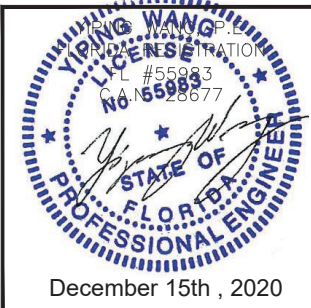
TYPICAL ELEVATIONS

OPTIONAL. PANIC HARDWARE
REGENT SERIES 5770

HARDWARE	MAX. DESIGN LOAD (FOR SIZES SHOWN ABOVE OR SMALLER) AS PERMITTED BY FBC	MISSILE IMPACT RATING
ADAMS RITE 1850S 3 POINT LOCK WITH 1870 FLUSH BOLTS	+ 75PSF / -75PSF	LARGE MISSILE IMPACT RATED
REGENT SERIES 5770 PANIC HARDWARE WITH CONCEALED VERTICAL ROD	+ 50PSF / -50PSF	LARGE MISSILE IMPACT RATED

NOTE:
SEE SHEET A1 FOR ANCHORS TYPE.

FL #32365



MCY ENGINEERING, INC.
GLAZING CONSULTANTS
12781 MIRAMAR PARKWAY #301
MIRAMAR, FL. 33027
F: 305.271.0117
www.MCYEngineering.com mcy@mcyengineering.com

SERIES 350-MS OUT SWING DOOR
EMC WINDOWS AND DOORS, LLC.
1356 W. 76TH STREET
HIALEAH, FL 33014
TEL. (305) 283-6280 EMCWindowsdoors@gmail.com

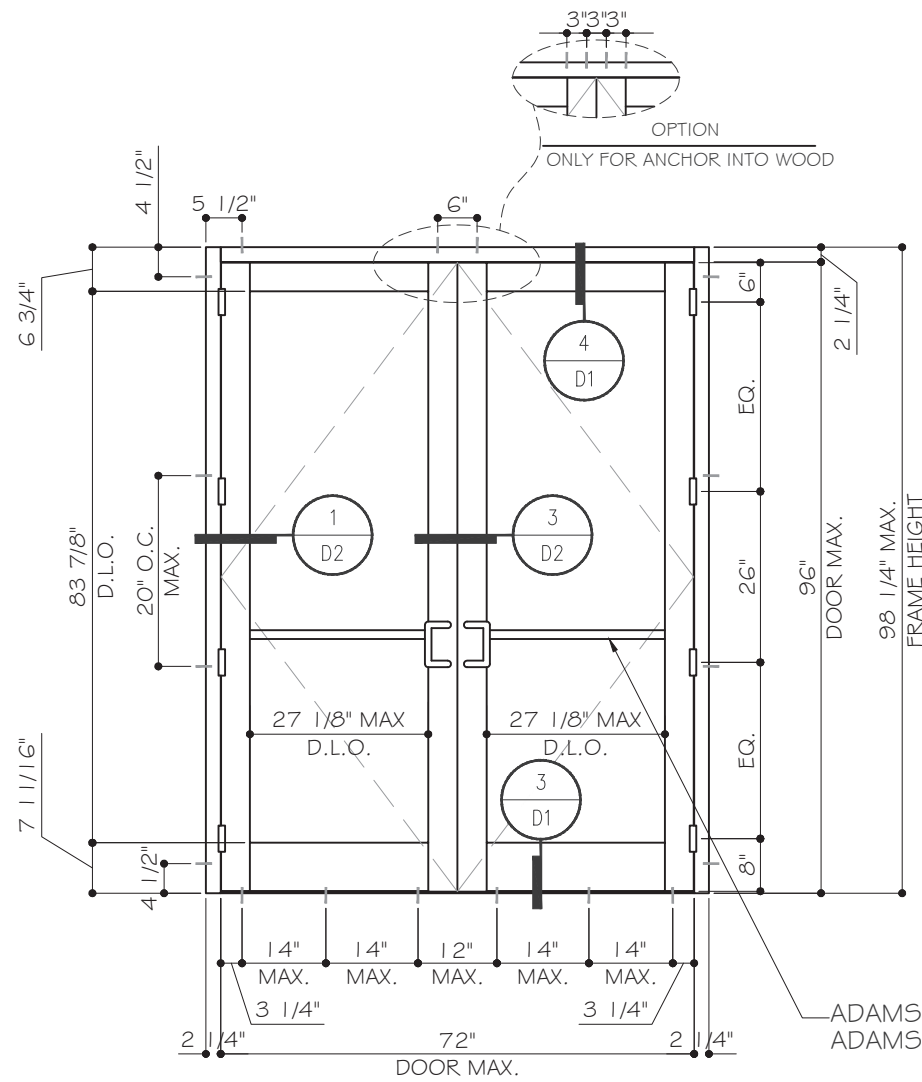
Rev. No.	Date	Drawn By	Description

Drawn Date: 06/18/2020
Scale:

DRAWING NO.
AD20-23

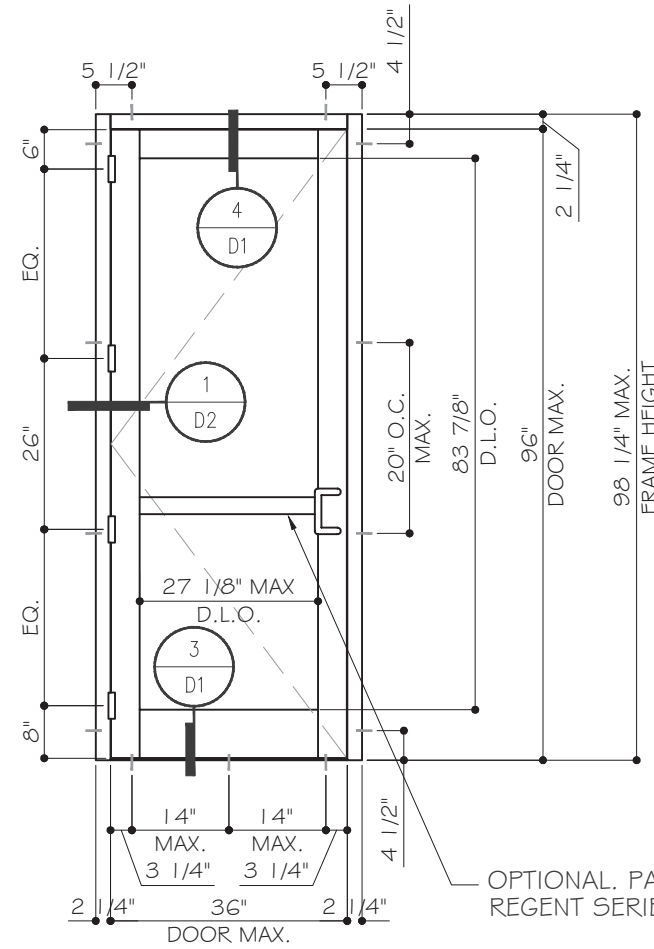
E1

Sheet No.
2 OF 8



ADAMS RITE 1850S 3-POINT LOCK
ADAMS RITE 1870 FLUSH BOLTS STD.

TYPICAL ELEVATIONS



OPTIONAL. PANIC HARDWARE
REGENT SERIES 5770

TYPICAL ELEVATIONS

HARDWARE	MAX. DESIGN LOAD (FOR SIZES SHOWN ABOVE OR SMALLER) AS PERMITTED BY FBC	MISSILE IMPACT RATING
ADAMS RITE 1850S 3 POINT LOCK WITH 1870 FLUSH BOLTS	+ 75PSF / -75PSF	LARGE MISSILE IMPACT RATED
REGENT SERIES 5770 PANIC HARDWARE WITH CONCEALED VERTICAL ROD	+ 50PSF / -50PSF	LARGE MISSILE IMPACT RATED

NOTE:
SEE SHEET A1 FOR ANCHORS TYPE.

FL #32365

December 15th, 2020

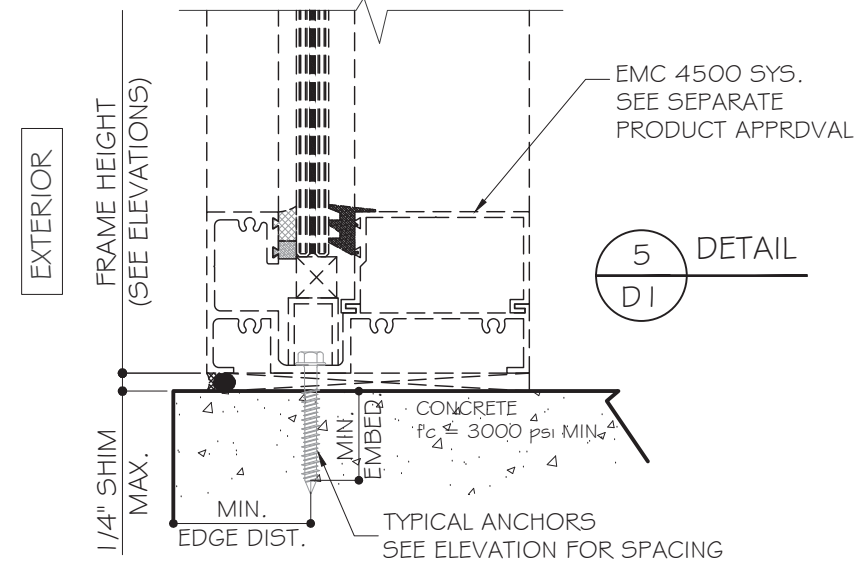
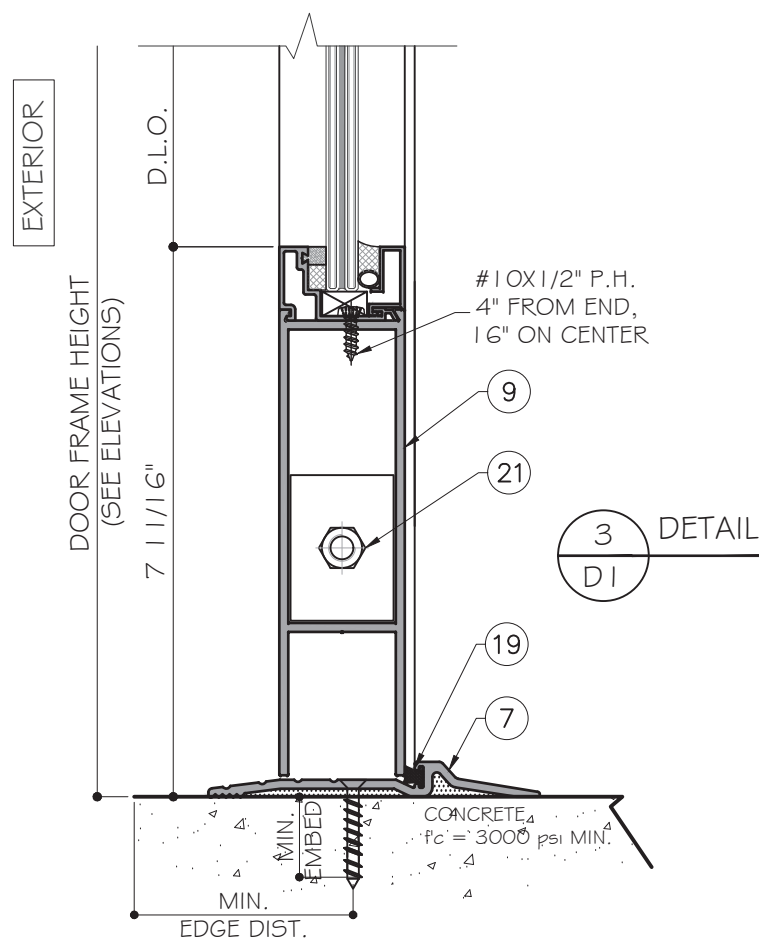
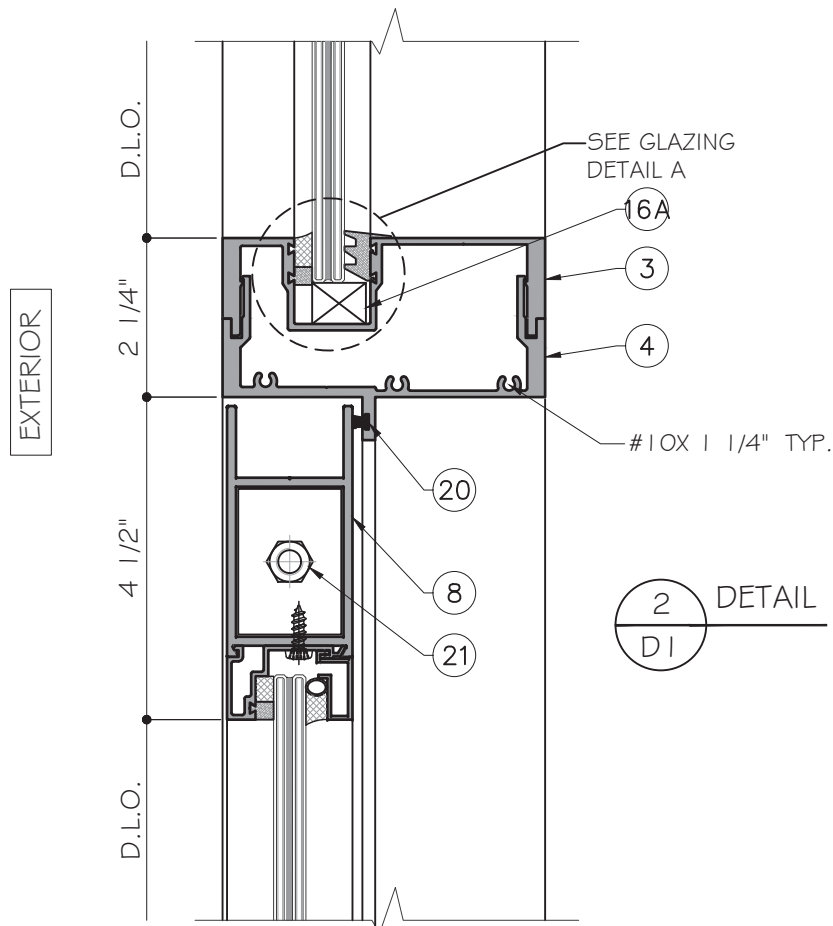
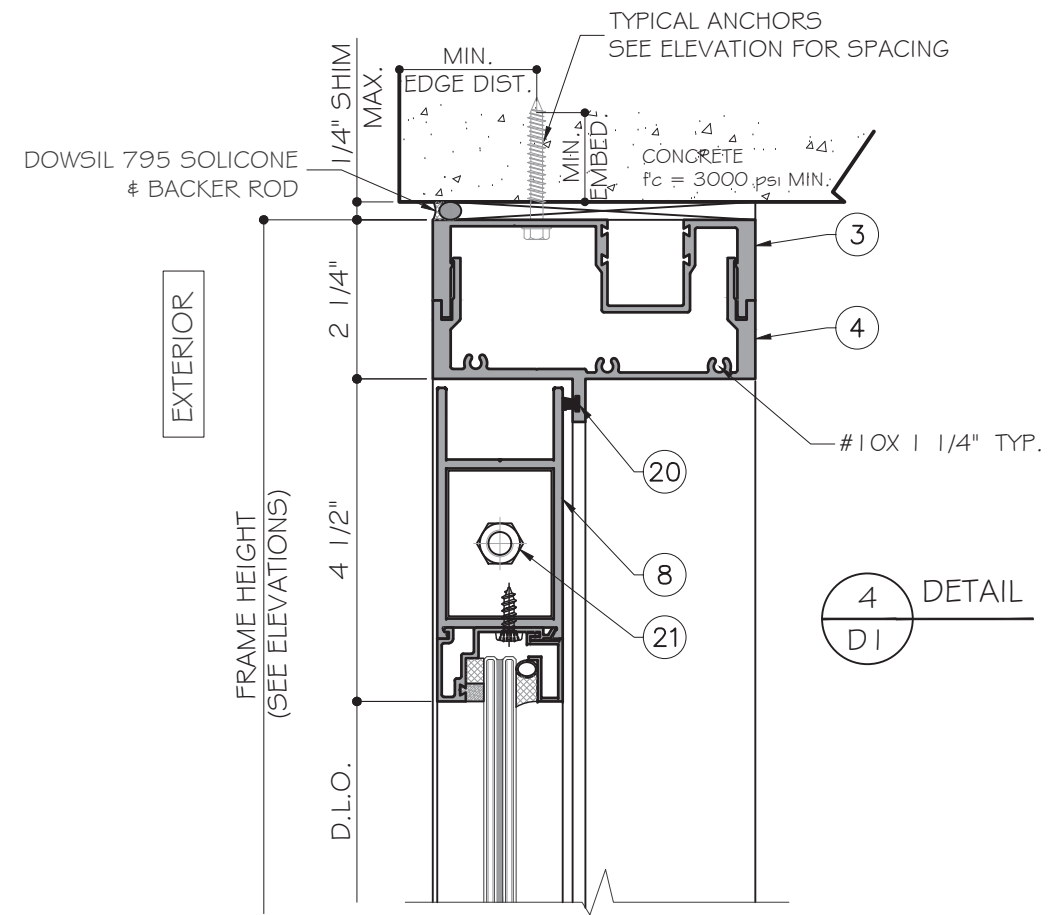
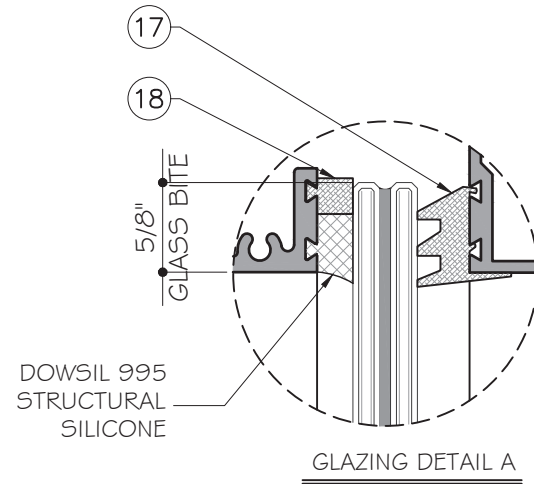
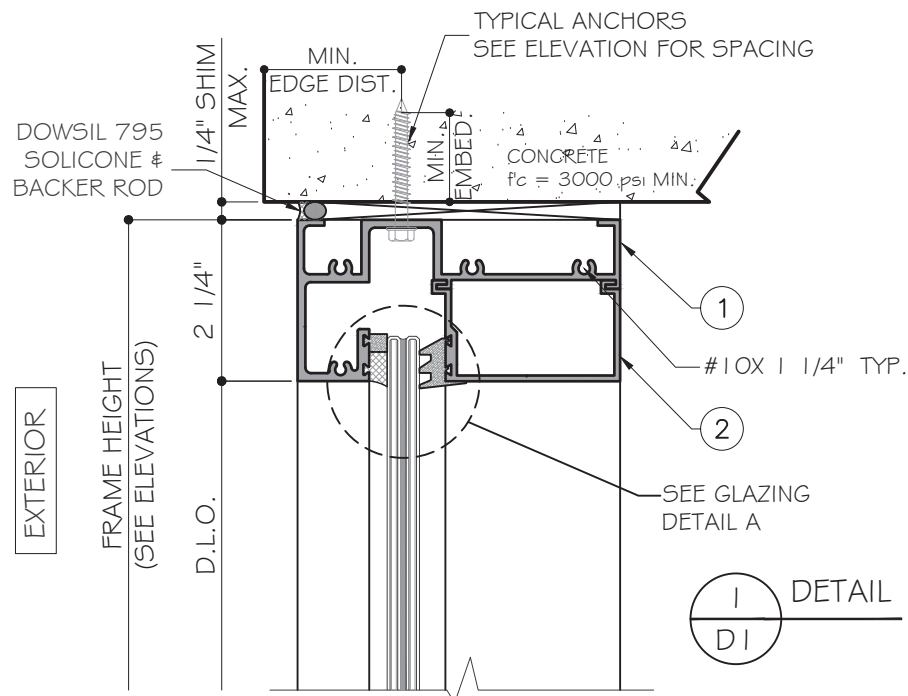
MCY ENGINEERING, INC.
GLAZING CONSULTANTS
12781 MIRAMAR PARKWAY #301
MIRAMAR, FL. 33027
F: 305.271.0117
www.MCYEngineering.com mcy@mcyengineering.com

SERIES 350-MS OUT SWING DOOR
EMC WINDOWS AND DOORS, LLC.
1356 W. 76TH STREET
HIALEAH, FL 33014
TEL. (305) 283-6280 EMCWindowsdoors@gmail.com

Rev. No.	Date	Drawn By	Description

Drawn Date: 06/18/2020 Scale: DRAWING NO. AD20-23

Sheet No. E2
3 OF 8



FL #32365

December 15th, 2020

MCY ENGINEERING, INC.
 GLAZING CONSULTANTS
 12781 MIRAMAR PARKWAY #301
 MIRAMAR, FL 33027
 F: 305.271.0117
 www.MCYEngineering.com mcy@mcyeengineering.com

SERIES 350-MS OUT SWING DOOR
EMC WINDOWS AND DOORS, LLC.
 1356 W. 76TH STREET
 HIALEAH, FL 33014
 TEL. (305) 283-6280 EMCWindowsdoors@gmail.com

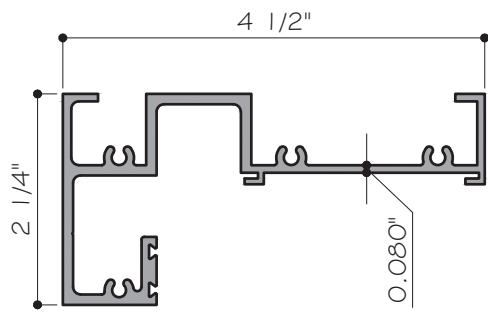
Drawn By	Date	Description

Drawn Date: 06/18/2020
 Scale:

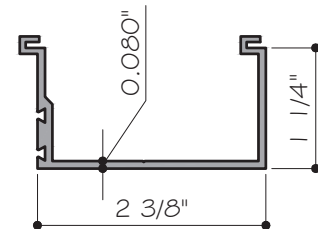
DRAWING NO. AD20-23

D1

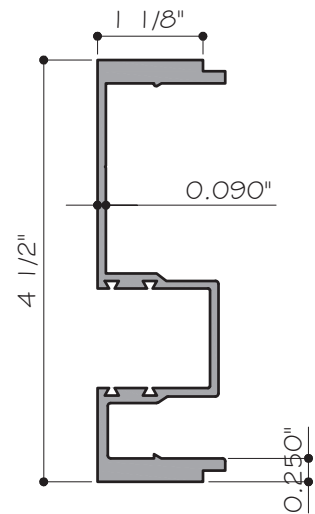
Sheet No. 4 OF 8



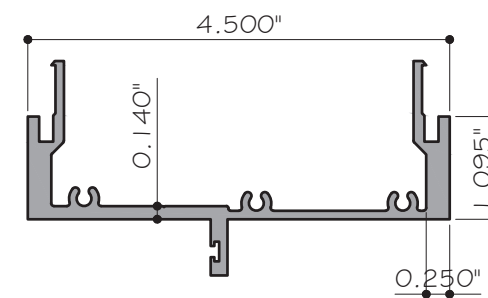
1 FRAME HEAD
WW14H (G0G3-T5)



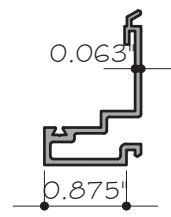
2 HEADER GLASS STOP
WW13GB (G0G3-T5)



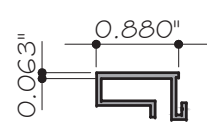
3 FRAME /JAMB BASE
WW11M (G0G3-T5)



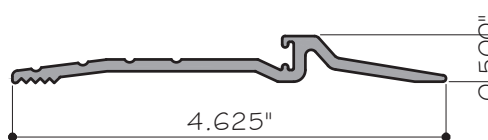
4 JAMB FOR DOOR
WW17J (G0G3-T5)



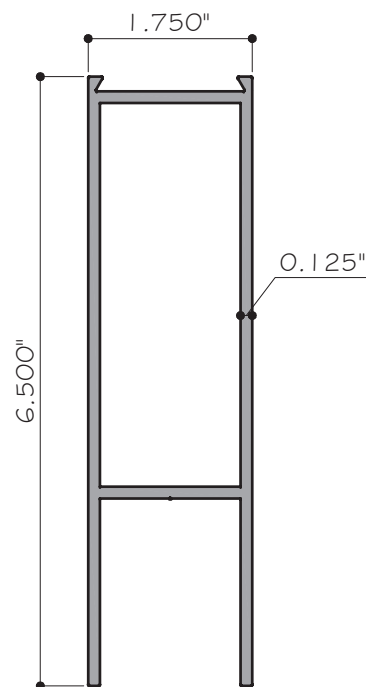
5 EXTER. GLASS STOP
WW185 (G0G3-T5)



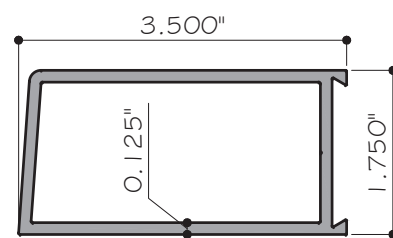
6 INTER. GLASS STOP
WW195 (G0G3-T5)



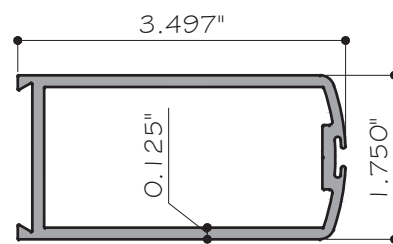
7 DOOR THRESHOLD
WW520B (G0G3-T5)



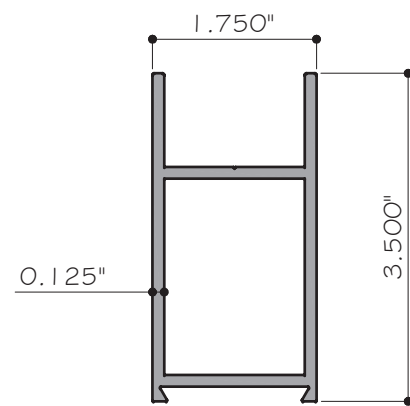
9 DOOR BOTT. RAIL
WW1314 (G0G3-T5)



10 DOOR JAMB STILE
WW1315 (G0G3-T5)

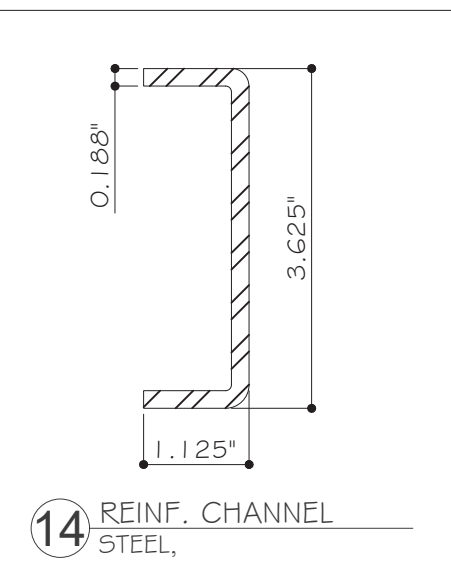
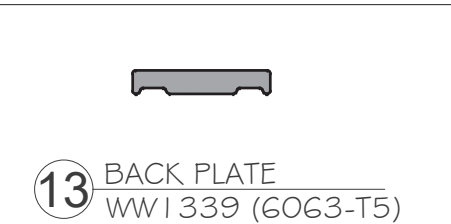
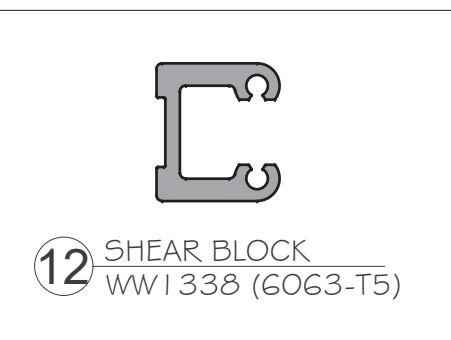


11 DOOR ASTRAGAL
WW1316 (G0G3-T5)



8 DOOR TOP RAIL
WW1311 (G0G3-T5)

BILL OF MATERIALS				
ITEM	PART	DESCRIPTION	MATERIAL	MANUF. / REMARKS
1	WW14H	FRAME HEAD	ALUM. 6063-T6	EMC
2	WW13GB	HEADER GLASS STOP	ALUM. 6063-T6	EMC
3	WW11M	FRAME /JAMB BASE	ALUM. 6063-T6	EMC
4	WW17J	JAMB FOR DOOR	ALUM. 6063-T6	EMC
5	WW185	EXTER. GLASS STOP	ALUM. 6063-T6	EMC
6	WW195	INTER. GLASS STOP	ALUM. 6063-T6	EMC
7	WW520B	DOOR THRESHOLD	ALUM. 6063-T6	EMC
8	WW1311	DOOR TOP RAIL	ALUM. 6063-T6	EMC
9	WW1314	DOOR BOTT. RAIL	ALUM. 6063-T6	EMC
10	WW1315	DOOR JAMB STILE	ALUM. 6063-T6	EMC
11	WW1316	DOOR ASTRAGAL	ALUM. 6063-T6	EMC
12	WW1338	SHEAR BLOCK	ALUM. 6063-T6	EMC
13	WW1339	BACK PLATE	ALUM. 6063-T6	EMC
14	ASTM-36	REINF. CHANNEL	STEEL, 3 5/8"X1 1/8"X 3/16"	EMC
15	4102	BACKUP PLATE	STEEL, 1 1/8"X8"X1/8"	EMC
16	-	SETTING BLOCK AT 1/4 POINT	5/8"X3/8", EPDM, DUROMETER 85 +/-5 SHORE-A	EMC / TREMCO
16A	-	SETTING BLOCK AT 1/4 POINT	9/16"X3/4", EPDM, DUROMETER 85 +/-5 SHORE-A	EMC / TREMCO
17	WWFP489	WEDGE GASKET	EPDM, DUROMETER 70 +/-5 SHORE-A	EMC / TREMCO
18	WWFP491B	1/4"X1/4" STOP	EPDM, DUROMETER 70 +/-5 SHORE-A	EMC / TREMCO
19	WHWF350	WEATHERSTRIP	FINSEAL	AMESBURY
20	AP 305	WEATHERSTRIP	DUAL TPE	SCHLEGEL
21	3833	3/8" THREADED ROD	STEEL, 3/8"X33"	EMC
22	6234	THRESHOLD CLIP	STEEL, 1"X1"X2"	EMC

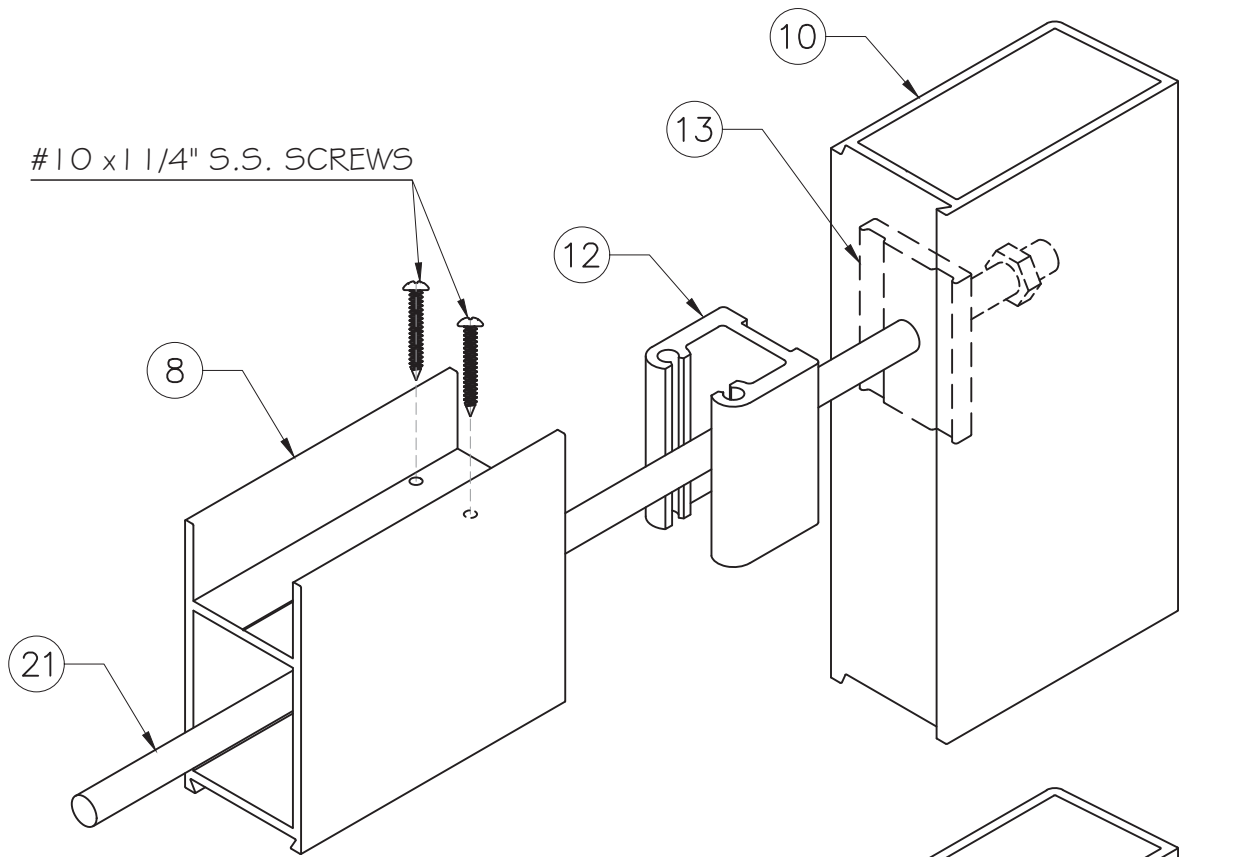


Drawn Date	Scale
06/18/2020	
DRAWING NO.	
AD20-23	
PARTS-1	
Sheet No.	
7 OF 8	

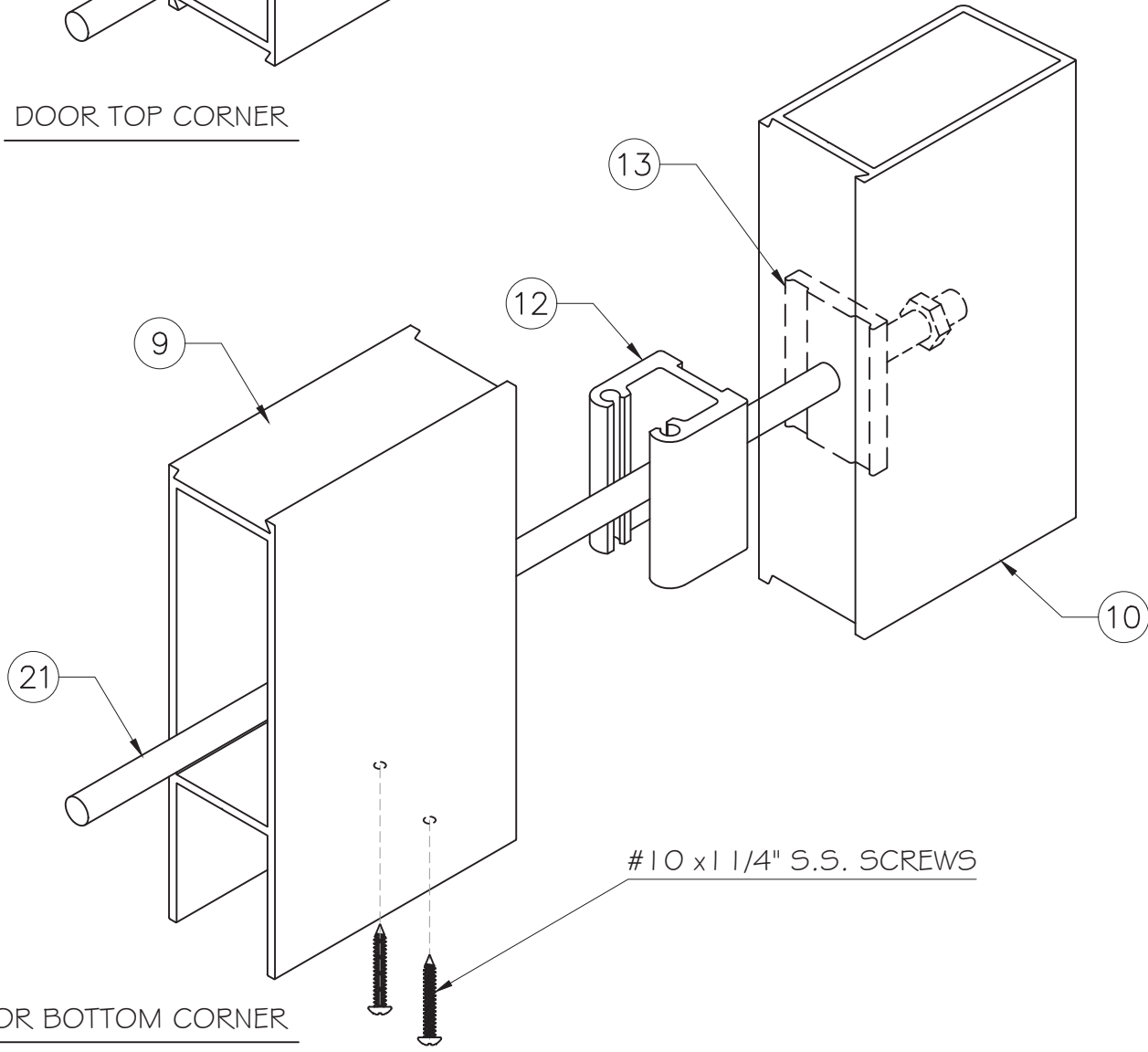
FL #32365

YI RONG WANG
REGISTERED PROFESSIONAL ENGINEER
FL #55983
CA. 55983-28677
STATE OF FLORIDA

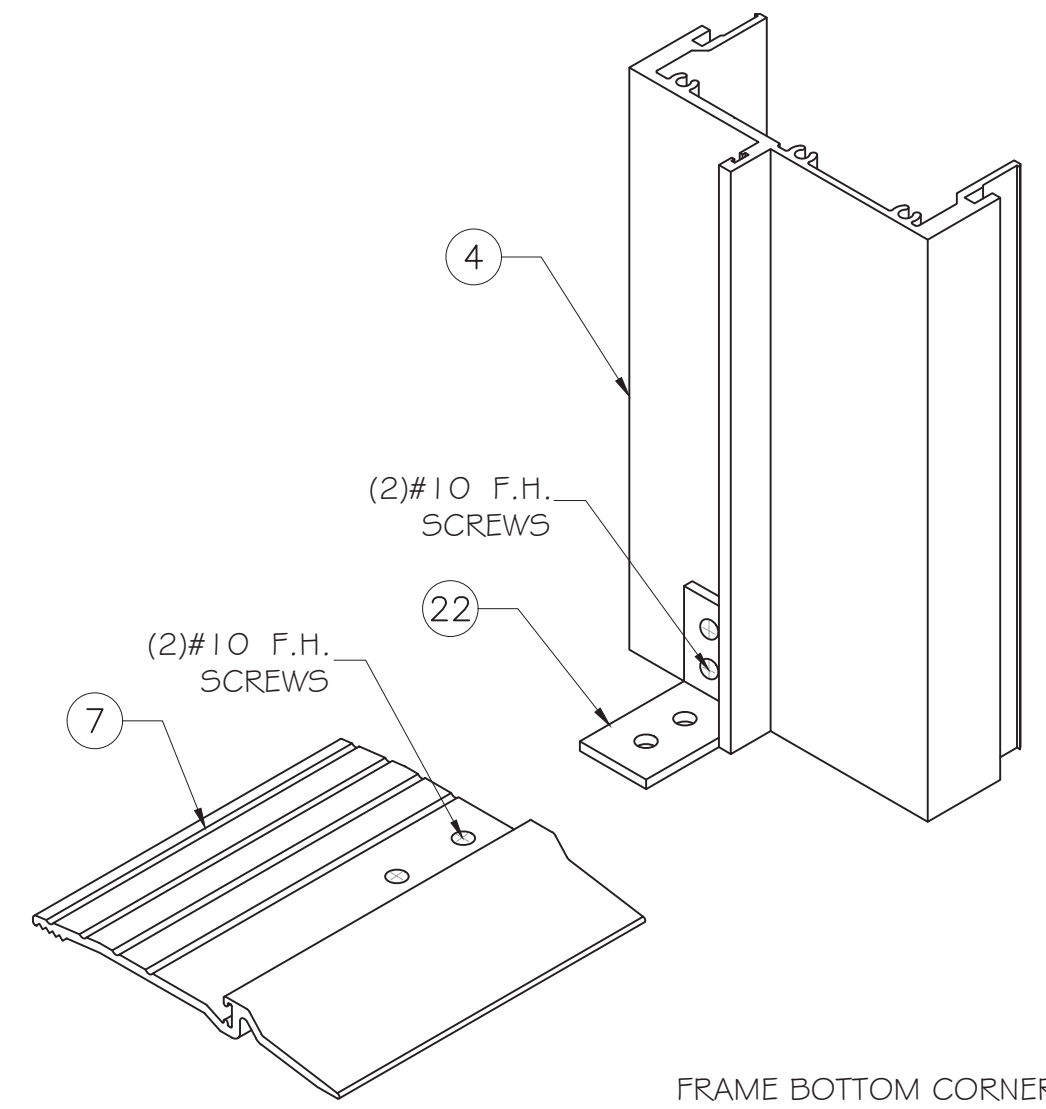
December 15th, 2020



DOOR TOP CORNER



DOOR BOTTOM CORNER



FRAME BOTTOM CORNER

FL #32365

December 15th, 2020

MCY ENGINEERING, INC.
 GLAZING CONSULTANTS
 12781 MIRAMAR PARKWAY #301
 MIRAMAR, FL 33027
 F: 305.271.0117
 www.MCYEngineering.com mcy@mcyengineering.com

SERIES 350-MS OUT SWING DOOR
 EMC WINDOWS AND DOORS, LLC.
 1356 W. 76TH STREET
 HIALEAH, FL 33014
 TEL. (305) 283-6280 EMCWindowsdoors@gmail.com

Rev. No.	Date	Drawn By	Description

Drawn Date: 06/18/2020 Scale: DRAWING NO. AD20-23

ISO
 Sheet No. 8 OF 8