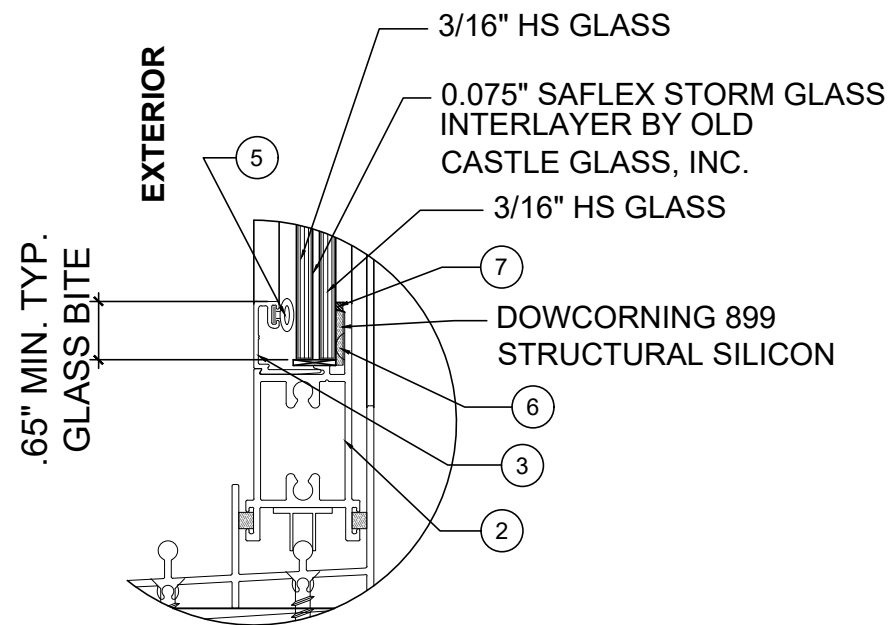
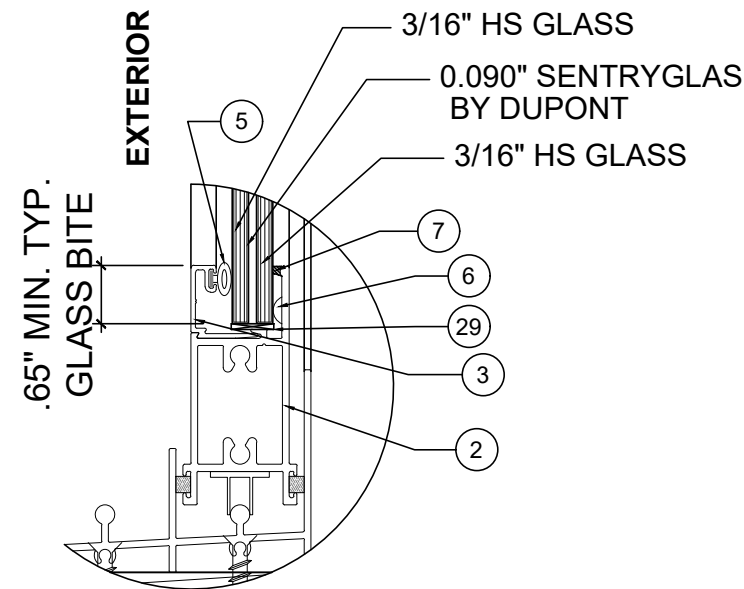


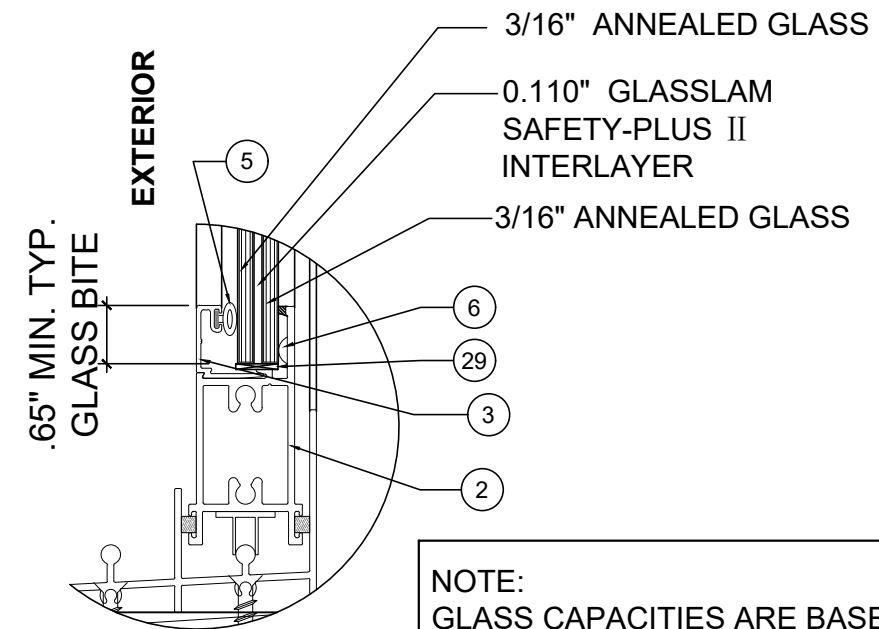
SERIES SG 2100 SLIDING GLASS DOORS (L.M.I. & S.M.I.)



GLASS TYPE "A"
7/16" NOMINAL TOTAL THK.



GLASS TYPE "B"
7/16" NOMINAL TOTAL THK.



GLASS TYPE "C"
1/2" NOMINAL TOTAL THK.

NOTE:
GLASS CAPACITIES ARE BASED ON
ASTM E1300-12 (3 SEC. GUSTS)

SG2100 SLIDING GLASS DOORS

GENERAL NOTES:

- THIS PRODUCT HAS BEEN DESIGNED AND TESTED TO COMPLY WITH THE REQUIREMENTS OF THE FLORIDA BUILDING CODE 2020 EDITION INCLUDING HIGH VELOCITY HURRICANE ZONE (HVHZ).
- DOORS RATED FOR LARGE AND SMALL MISSILE IMPACT AND DO NOT REQUIRE SHUTTERS.
- ULTIMATE DESIGN LOAD OBTAINED FROM ASCE 7-16, MULTIPLY BY 0.6 SHALL BE LESS THAN OR EQUAL TO DESIGN LOAD IN THIS DOCUMENT.
- THESE DOORS ARE APPROVED FOR AIR AND WATER INFILTRATION.
- ANCHORS SHALL BE AS LISTED, SPACED AS SHOWN ON DETAILS. ANCHORS EMBEDMENT TO BASE MATERIAL SHALL BE BEYOND WALL DRESSING OR STUCCO.
- ANCHORING OR LOADING CONDITIONS NOT SHOWN IN THESE DETAILS ARE NOT PART OF THIS APPROVAL.

- WOOD BUCKS BY OTHERS MUST BE SOUTHERN PINE, (G = 0.55 OR BETTER) AND MUST BE ANCHORED PROPERLY TO TRANSFER LOADS TO THE STRUCTURE.
- A LOAD DURATION FACTOR IN ALLOWABLE STRESS IS USED IN DESIGN OF ANCHORS INTO WOOD ONLY.
- MATERIALS INCLUDING BUT NOT LIMITED TO STEEL/METAL SCREWS THAT COME INTO CONTACT WITH OTHER DISSIMILAR MATERIALS SHALL MEET THE REQUIREMENTS OF THE 2020 FLORIDA BUILDING CODE.
- METAL STRUCTURES NOT BY EMC WINDOWS & DOORS, LLC. MUST SUPPORT LOADS IMPOSED BY WINDOW SYSTEM AND TRANSFER THEM TO THE BUILDING STRUCTURE.

LIMITATIONS OF USE	
A-	THIS PRODUCT EVALUATION DOCUMENT (P.E.D.) PREPARED BY THIS ENGINEER IS GENERIC AND DOES NOT PROVIDE INFORMATION FOR A SITE SPECIFIC PROJECT; I.E. WHERE THE SITE CONDITIONS DEVIATE FROM THE P.E.D.
B-	CONTRACTOR TO BE RESPONSIBLE FOR THE SELECTION, PURCHASE AND INSTALLATION OF THIS PRODUCT BASED ON THIS PRODUCT EVALUATION PROVIDED HE/SHE DOES NOT DEVIATE FROM THE CONDITIONS DETAILED ON THIS DOCUMENT.
C-	THIS PRODUCT EVALUATION DOCUMENT WILL BE CONSIDERED INVALID IF ALTERED BY ANY MEANS.
D-	SITE SPECIFIC PROJECTS SHALL BE PREPARED BY A FLORIDA REGISTERED ENGINEER OR ARCHITECT WHICH WILL BECOME THE ENGINEER OF RECORD (E.O.R.) FOR THE PROJECT AND WHO WILL BE RESPONSIBLE FOR THE PROPER USE OF THE P.E.D.
E-	THIS P.E.D. SHALL BEAR THE DATE AND ORIGINAL SEAL AND SIGNATURE OF THE PROFESSIONAL ENGINEER OF RECORD THAT PREPARED IT.

FLORIDA APPROVAL:
FL #17596

YIPING WANG, P.E.
FLORIDA REGISTRATION
No. #55983
C.A.N. 28677

December 30th, 2020

MCY ENGINEERING, INC.
GLAZING CONSULTANTS
12781 MIRAMAR PARKWAY #301 F. (305)271-0117
MIRAMAR, FL 33027
www.MCYEngineering.com mcy@mcyengineering.com

SERIES SG2100 SLIDING GLASS DOOR (L.M.I. & S.M.I.)
EMC WINDOWS AND DOORS, LLC.
1356 W. 76TH STREET
HALEAH, FL 33014
TEL. (305) 283-6280 EMCWindowsDoors@gmail.com

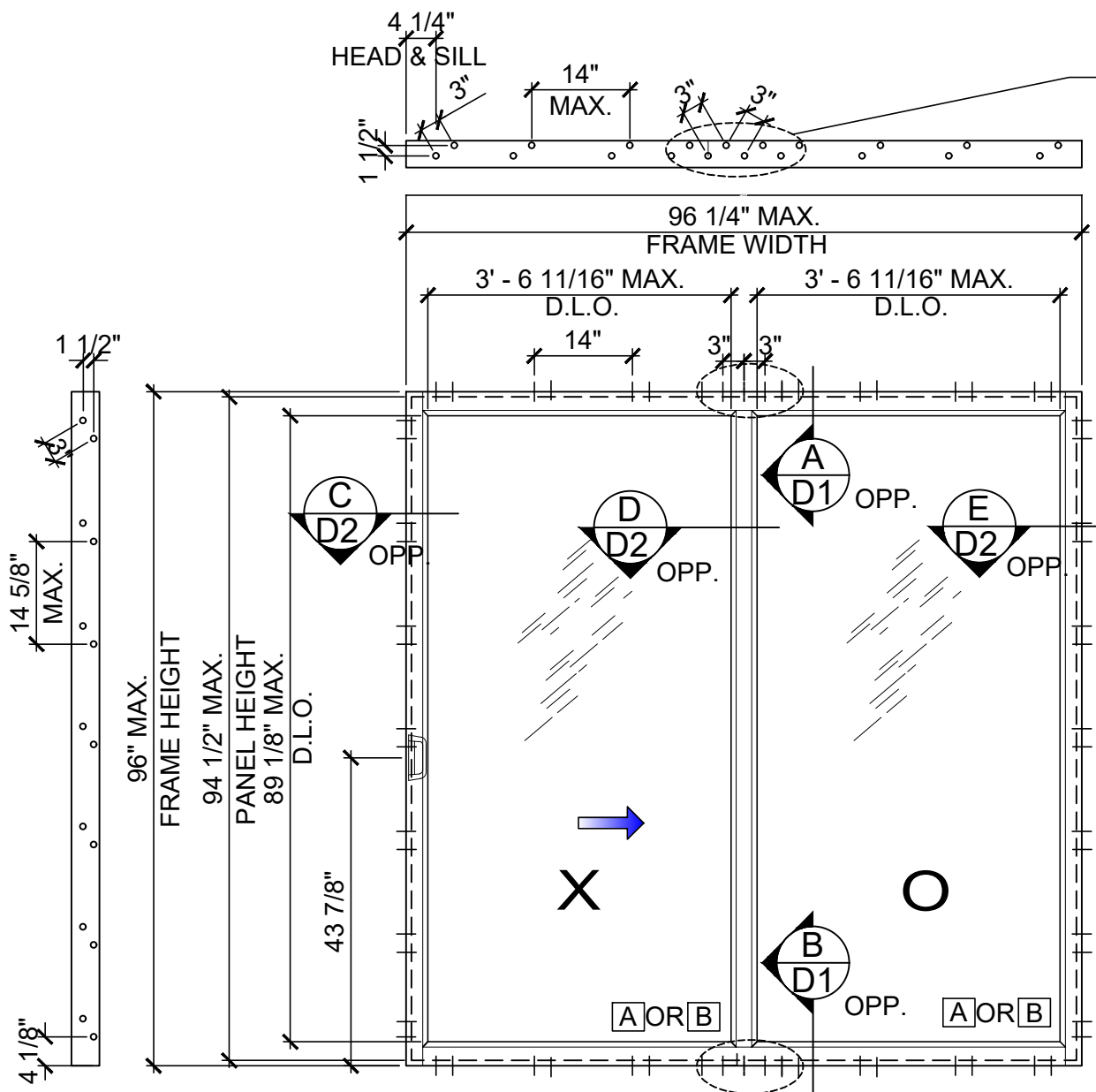
Rev. No.	Date	Drawn By	For Approval	Description
1	12/30/2020	James		

Drawn Date: 12/17/2020 Scale: _____

DRAWING NO. AD15-16

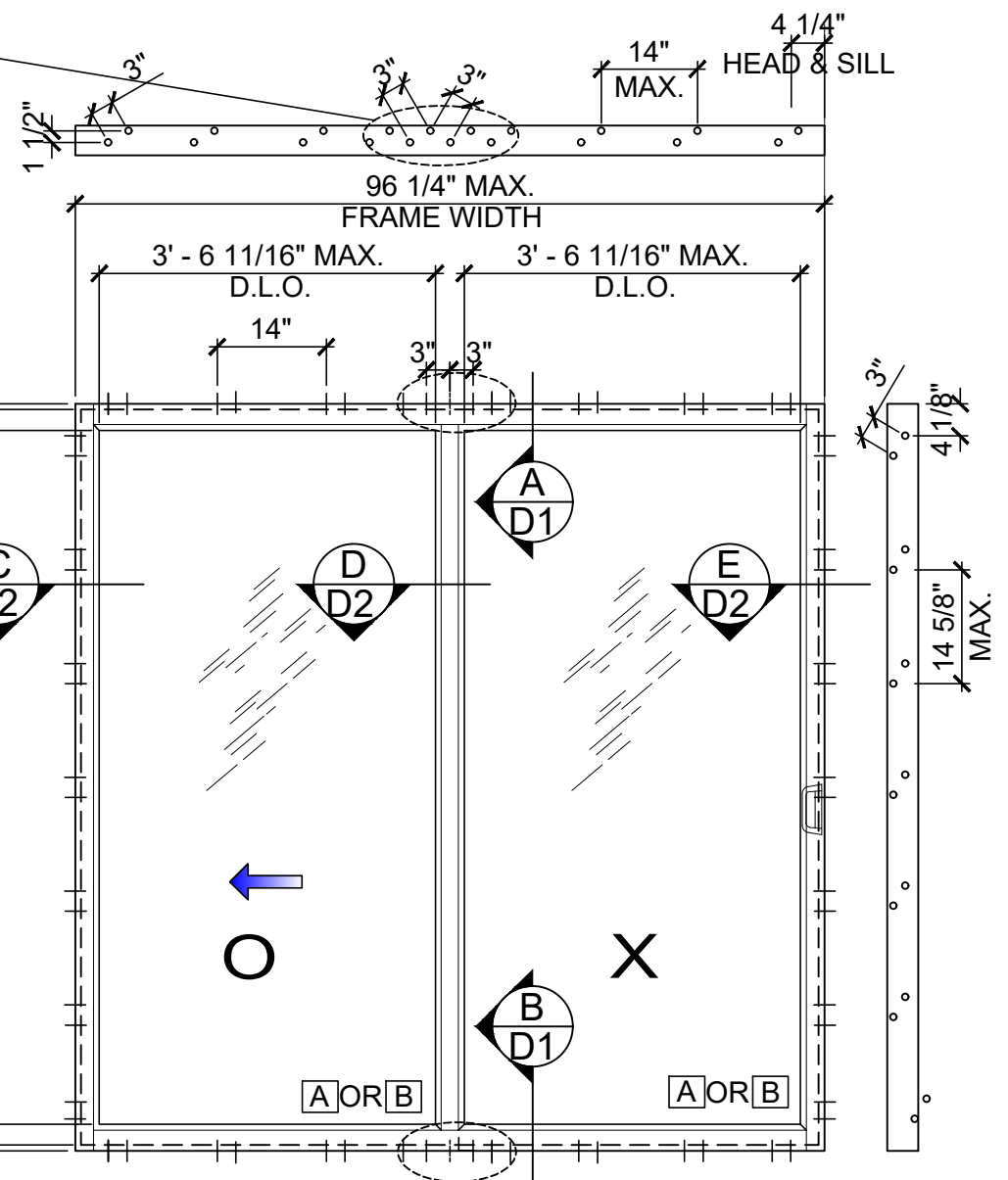
SHEET 1 OF 13

HEAD ANCHOR CHART - 2 TRACK		
ANCHOR	MAX.	NO. OF ANCHOR
TYPE	SHIM	REQ.@ INTERLOCK
A	1/2"	8
B & C	3/8"	6
B & C	1/2"	8



TYPICAL ELEVATION (XO)

DESIGN LOAD
 (FOR SIZES SHOWN ABOVE OR SMALLER
 AS PERMITTED BY FBC)
 +80.0 PSF
 -100.0 PSF



TYPICAL ELEVATION (OX)

FLORIDA APPROVAL:
 FL #17596

YIPING WANG
 YIPING WANG, P.E.
 FLORIDA REGISTRATION
 NO. 55983
 C.A.N. 28677

December 30th, 2020

MCY ENGINEERING, INC.
 GLAZING CONSULTANTS
 12781 MIRAMAR PARKWAY #301 F. (305)271-0117
 MIRAMAR, FL 33027
 www.MCYEngineering.com mcy@mcyengineering.com

SERIES SG2100 SLIDING GLASS DOOR (L.M.I. & S.M.I.)

EMC WINDOWS AND DOORS, LLC.
 1356 W. 76TH STREET
 HIALEAH, FL 33014
 TEL. (305) 283-6280 EMCWindowsDoors@gmail.com

Rev. No.	Date	Drawn By	For Approval	Description
1	12/30/2020	James		

Drawn Date: 12/17/2020 Scale:

DRAWING NO. AD15-16

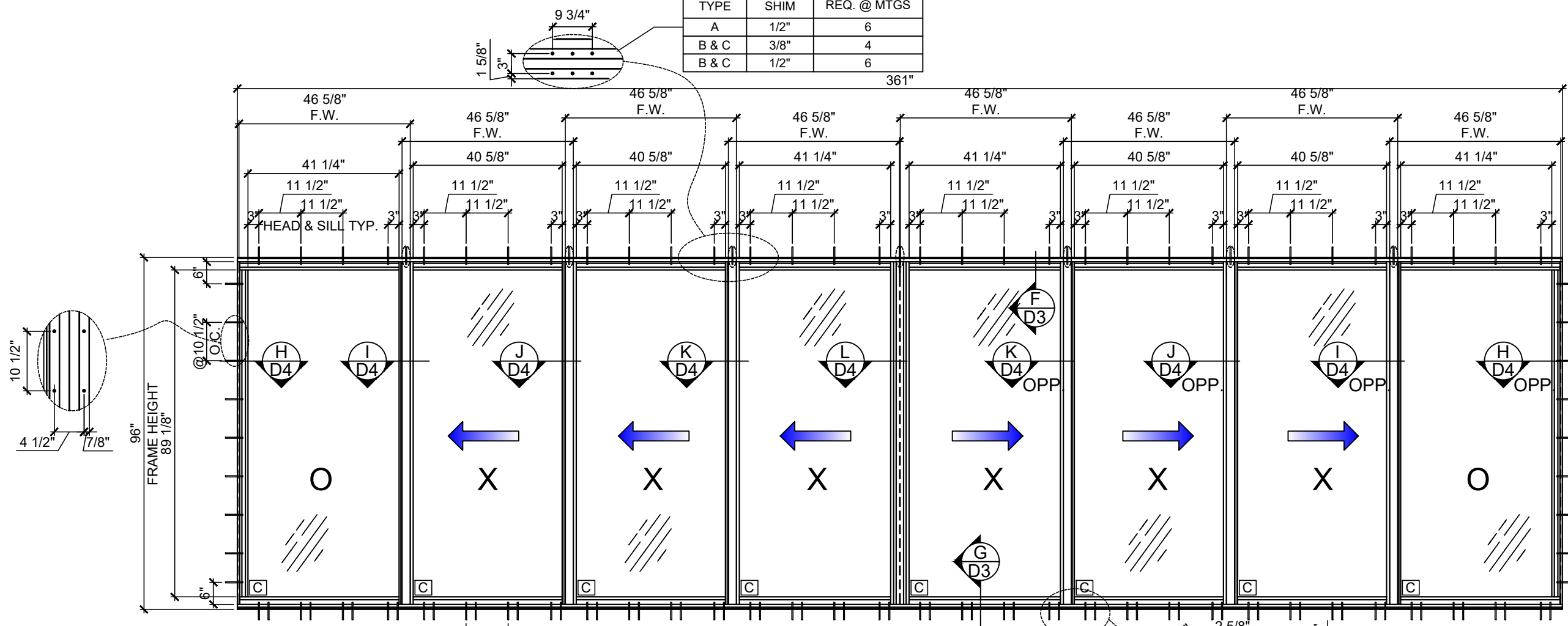
Sheet No. E1

SHEET 2 OF 13

Rev. No.	Date	Drawn By	For Approval	Description
1	12/30/2020	James		

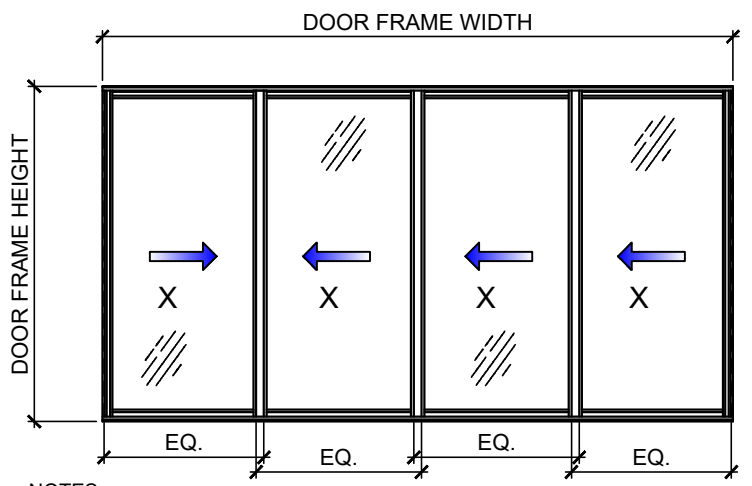
Drawn Date	Scale
12/17/2020	
DRAWING NO.	
AD15-16	
E2	
Sheet No.	
SHEET 3 OF 13	

ANCHOR TYPE	MAX. SHIM	NO. OF ANCHOR REQ. @ MTGS
A	1/2"	6
B & C	3/8"	4
B & C	1/2"	6



TYPICAL EXTERIOR ELEVATIONS
OXXXXXO

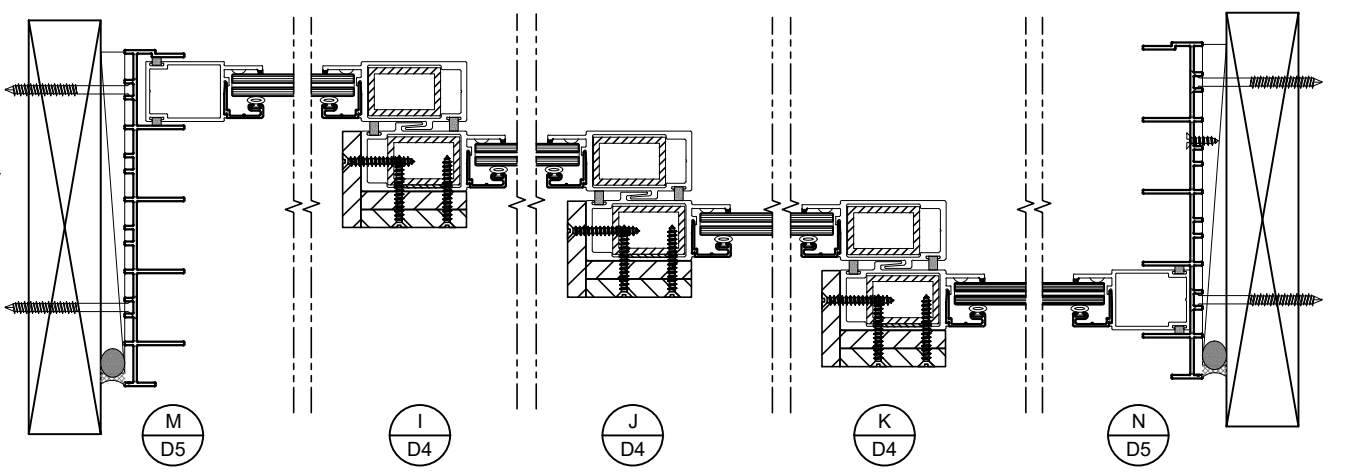
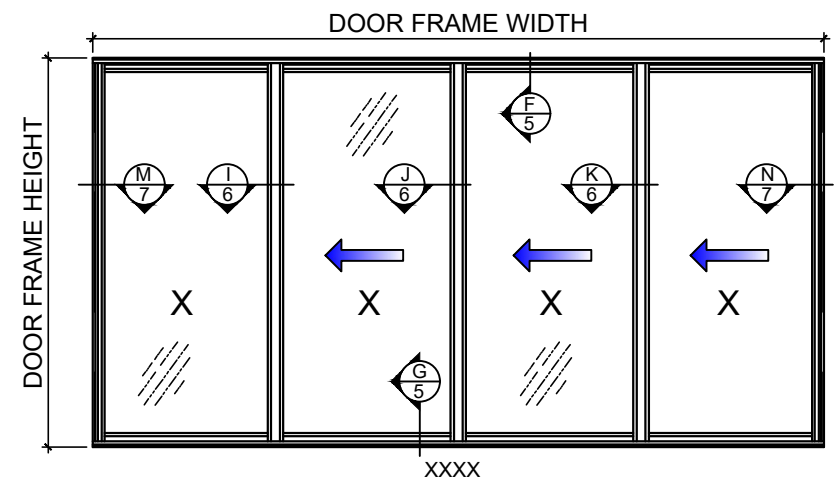
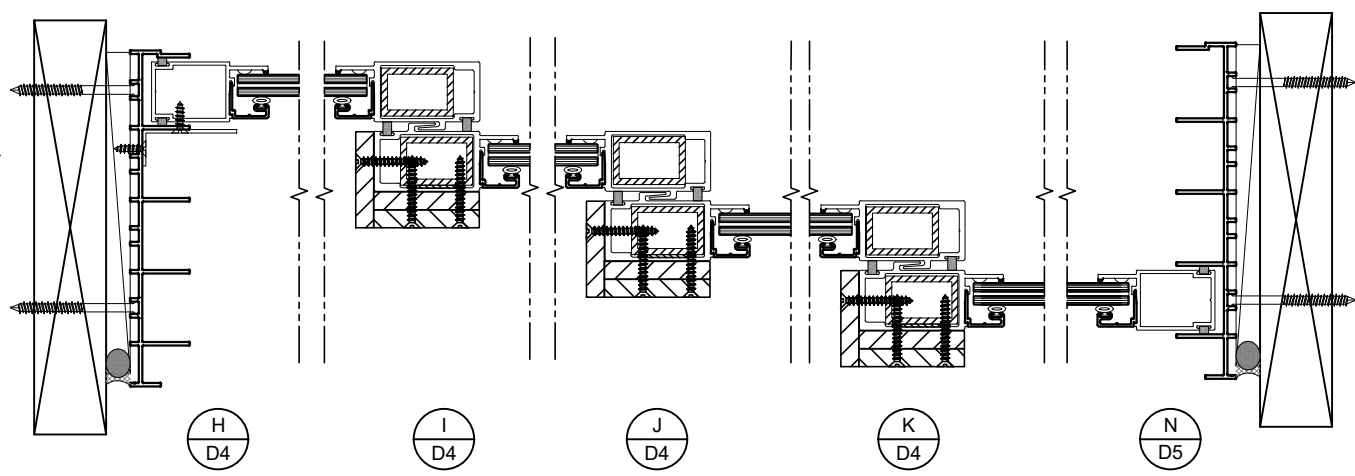
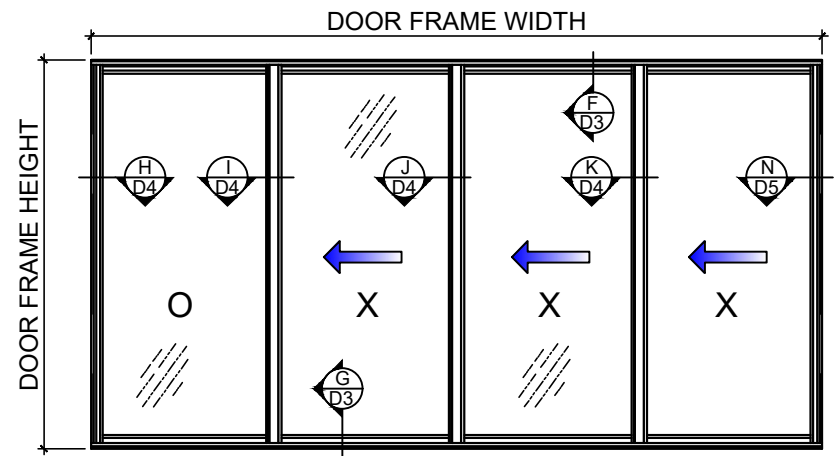
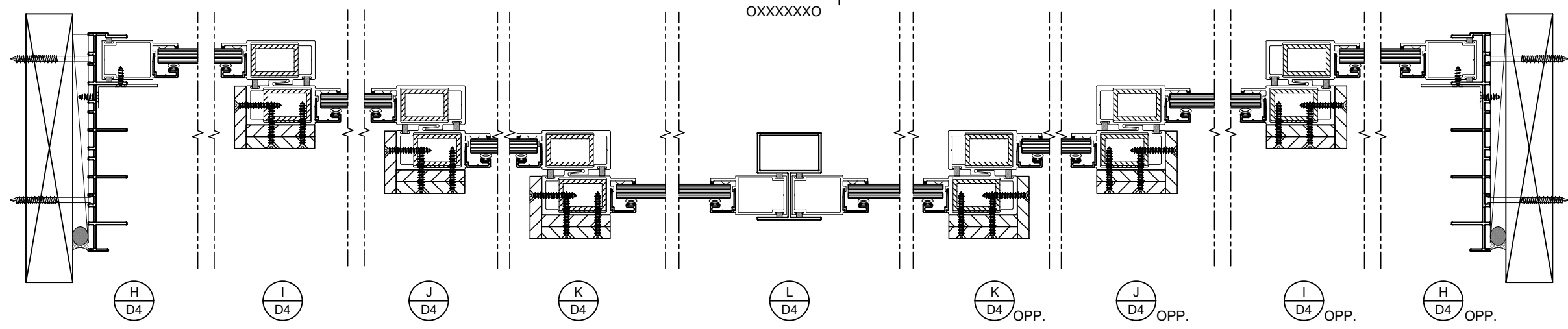
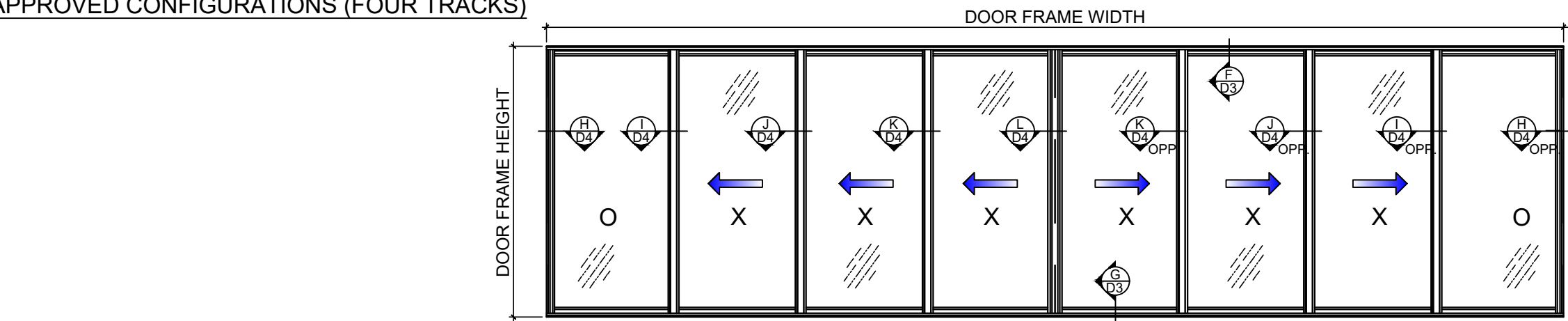
AVE. PANEL WIDTH (IN)	DOOR FRAME HEIGHT (IN)	GLASS "C" (+/-)PSF
36	90	65
42		65
48		65
36	96	65
42		65
45.125		65
30	102	65
36		65
42		58.3
30	108	65
36		56
39		52.1



NOTES:
CONFIGURATION FOR 4 PANELS SHOWN, QUALIFY FOR 8 PANEL CONDITIONS.
AVE. PANEL WIDTH= FRAME WIDTH / NO. OF PANEL

FLORIDA APPROVAL:
FL #17596
YIPING WANG
YIPING WANG, P.E.
FLORIDA REGISTRATION NO. 55983
C.A.N. 28677
December 30th, 2020

APPROVED CONFIGURATIONS (FOUR TRACKS)



NOTES:

1. CONFIGURATIONS SHOWN FOR ILLUSTRATION PURPOSES ONLY.
2. SEE SHEET 1 FOR APPROVED GLASS INFORMATION.
3. SEE SHEET 3 FOR APPROVED SIZE AND DESIGN LOAD.
4. SEE SHEET 5 FOR APPROVED ANCHOR TYPES. NUMBER OF ANCHORS REQUIRED SEE SHEET 2.

FLORIDA APPROVAL:
FL #17596

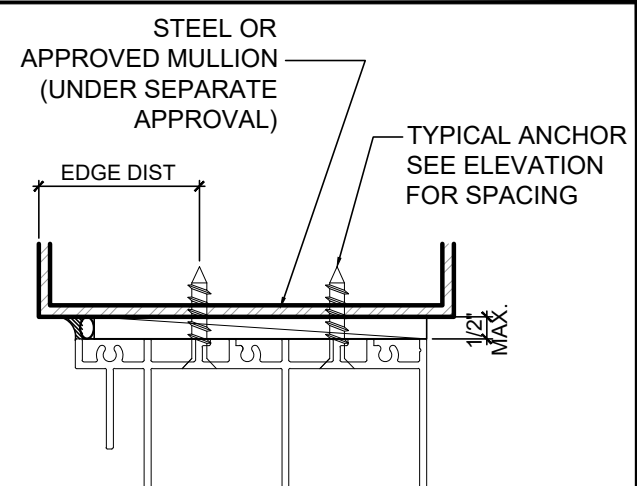
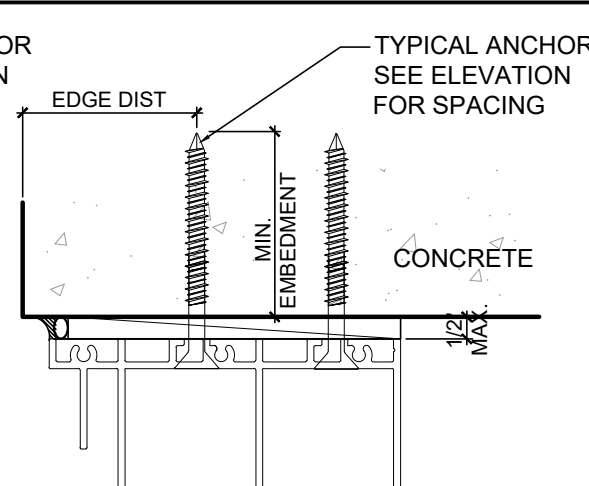
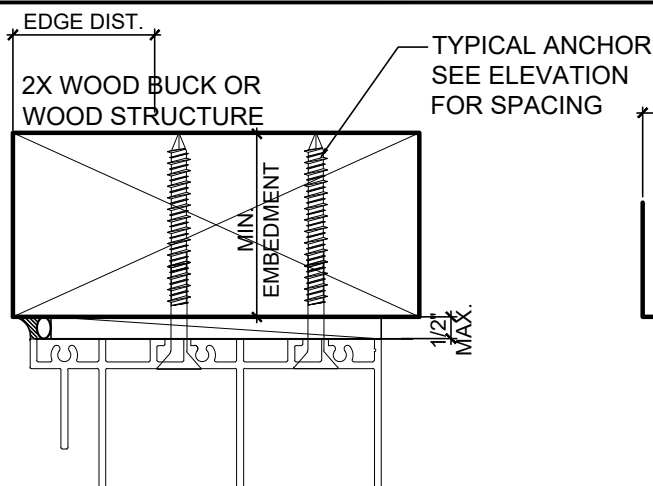
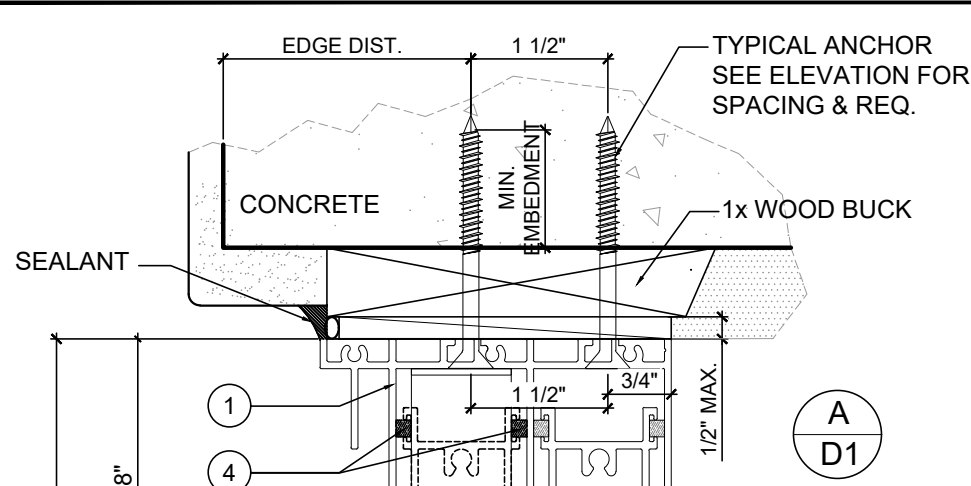
YIPING WANG
YIPING WANG, P.E.
FLORIDA REGISTRATION
No. 55983
C.A.N. 28677
December 30th, 2020

SERIES SG2100 SLIDING GLASS DOOR (L.M.I. & S.M.I.)

EMC WINDOWS AND DOORS, LLC.
1356 W. 76TH STREET
HALEAH, FL 33014
TEL. (305) 283-6280 EMCWindowsDoors@gmail.com

MCY ENGINEERING, INC.
GLAZING CONSULTANTS
12781 MIRAMAR PARKWAY #301 F. (305) 271-0117
MIRAMAR, FL 33027
www.MCYEngineering.com mcy@mcyengineering.com

Rev. No.	Date	Drawn By	Description
1	12/30/2020	James	For Approval
Drawn Date		Scale	
12/17/2020			
DRAWING NO.			
AD15-16			
CONFIGURATION			
Sheet No.			
SHEET 4 OF 13			



1X OR 2X WOOD BUCKS AND METAL STRUCTURES NOT BY EMC WINDOWS MUST SUPPORT LOADS IMPOSED BY GLAZING SYSTEM AND TRANSFER THEM TO THE BUILDING STRUCTURE.

TYPICAL ANCHORS FOR 2-TRACK DOOR:
(SEE ELEV. FOR SPACING)

- TYPE 'A' - 1/4" ULTRACON+ BY 'DEWALT'** (Fu = 164 KSI, Fy = 148 KSI)
- INTO 2BY WOOD BUCKS OR WOOD STRUCTURE
1-1/2" MIN. PENETRATION INTO WOOD
 - OR THRU WOOD BUCKS INTO CONC. OR MASONRY

- TYPE 'B' - 1-1/4" ULTRACON + BY 'DEWALT'** (Fu=164 KSI, Fy=148 KSI)
- DIRECTLY INTO CONC. OR MASONRY
1 3/4" MIN. INTO CONCRETE
 - 1 1/4" MIN. INTO HOLLOW BLOCK **(JAMB ONLY)**
 - 1 3/4" MIN. INTO GROUT FILLED BLOCK **(JAMB ONLY)**

- TYPE 'C' - 1/4" TEKS OR SELFDRILLING SCREWS (GRADE 5 CRS)**
(Fu=120 KSI, Fy=92 KSI)
- INTO METAL STRUCTURES OR APPROVED MULLION

STEEL : 1/8" THK MIN (Fy = 36KSI MIN.)
ALUMINUM: 1/8" THK. MIN. (6063-T5 MIN.)
(STEEL IN CONTACT WITH ALUMINUM TO BE PLATED OR PAINTED)

ANCHOR EDGE DISTANCES
INTO CONCRETE AND MASONRY = 2 1/2" TYPICAL, UNLESS SPECIFIED ON DETAIL
INTO WOOD STRUCTURE = 1" MIN.
INTO METAL STRUCTURE = 3/4" MIN.

WOOD AT HEAD OR JAMB SG = 0.55 MIN.
CONCRETE AT HEAD, SILL OR JAMB fc'=3050 psi MIN.
C-90 HOLLOW/FILLED BLOCK fM'=2000 psi MIN.

WEEP HOLES
W1 = 3/8" X 1 1/2" WEEP HOLES
AT 8" FROM EACH END (2) PER PANEL

SEALANT
ALL FRAME AND SASH CORNER SEAMS AND JOINTS WERE SEALED USING SCHNEE MOREHEAD SEAM SEALER SM 5504

FRAME HEIGHT

3 3/8"

D.L.O.

EXTERIOR

3 3/8"

1" MAX.

1

4

2

3

A
D1

B
D1

B
D1
OPTION

WATER INFILTRATION
LIMIT POSITIVE LOAD
TO +60 PSF.

WATER INFILTRATION
LIMIT POSITIVE LOAD
TO +80 PSF.

2 1/4"
TYPICAL ANCHOR
SEE ELEVATION
FOR SPACING &
REQUEST

15
ALUMINUM BAR
WITH (2) #10 X 5/8"
SMS (CONTINUOUS)

18

8

9

CONCRETE

MIN
EMBEDMENT

1 1/2"

CONCRETE

MIN
EMBEDMENT

1 1/2"

TYPICAL ANCHOR
SEE ELEVATION
FOR SPACING

NON SHRINK HIGH STRENGTH
GROUT fc'=10 KSI MIN. WITH
BONDING AGENT

FLORIDA APPROVAL:
FL #17596

YIPING WANG
YIPING WANG, P.E.
FLORIDA REGISTRATION
NO. 55983
C.A.N. 28677
December 30th, 2020

SERIES SG2100 SLIDING GLASS DOOR (L.M.I. & S.M.I.)

EMC WINDOWS AND DOORS, LLC.
1356 W. 76TH STREET
HALEAH, FL 33014

TEL. (305) 283-6280 EMCWindowsDoors@gmail.com

MCY ENGINEERING, INC.
GLAZING CONSULTANTS
12781 MIRAMAR PARKWAY #301 F. (305) 271-0117
MIRAMAR, FL 33027
www.MCYEngineering.com mcy@mcyengineering.com

Rev. No.	Date	Drawn By	For Approval	Description
1	12/30/2020	James		

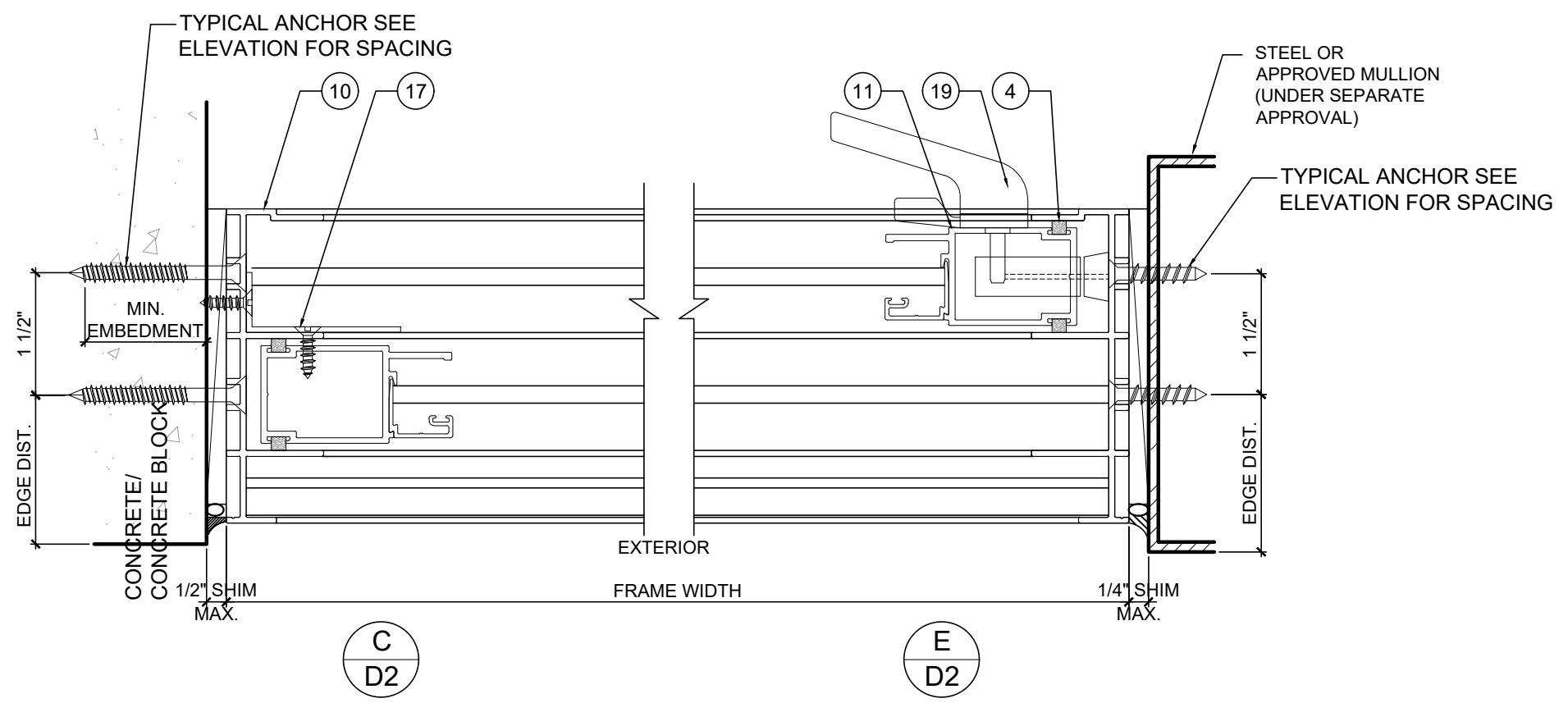
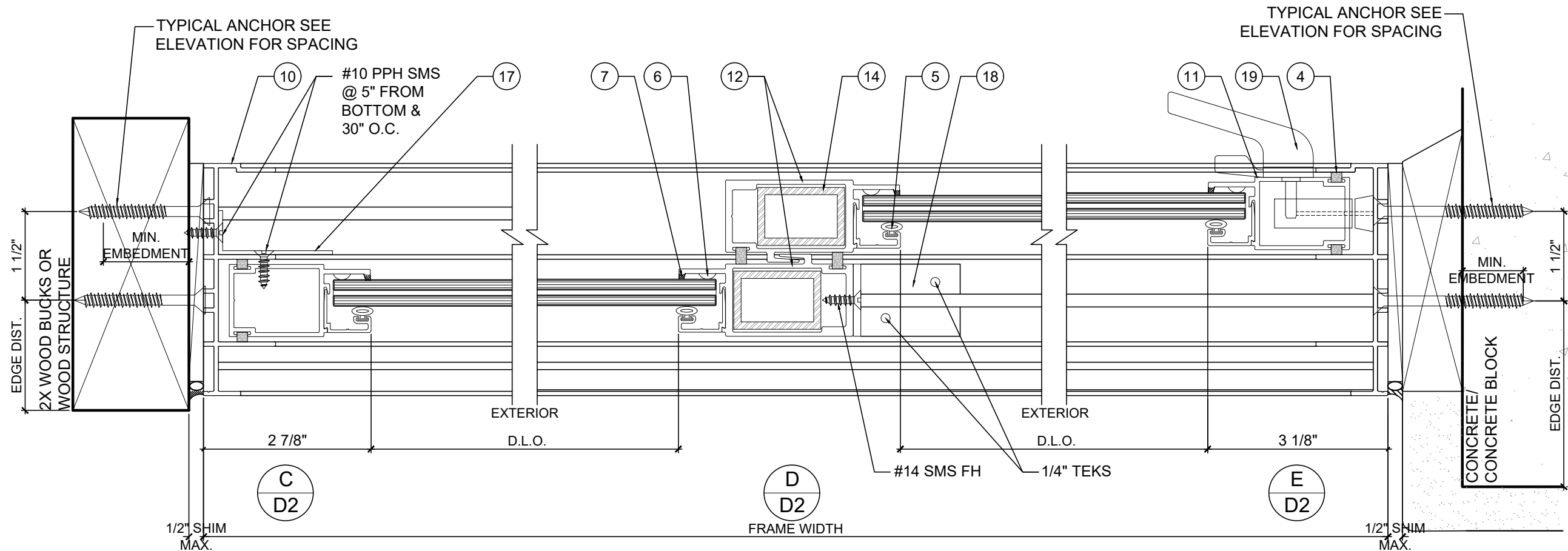
Drawn Date
12/17/2020

Scale

DRAWING NO.
AD15-16

Sheet No.
D1

SHEET 5 OF 13



MCY ENGINEERING, INC.
GLAZING CONSULTANTS
12781 MIRAMAR PARKWAY #301 F. (305)271-0117
MIRAMAR, FL 33027
www.MCYEngineering.com mcy@mcyengineering.com

SERIES SG2100 SLIDING GLASS DOOR (L.M.I. & S.M.I.)
EMC WINDOWS AND DOORS, LLC.
1356 W. 76TH STREET
HALEAH, FL 33014
TEL. (305) 283-6280 EMCWindowsDoors@gmail.com

FLORIDA APPROVAL:
FL #17596
YIPING WANG
YIPING WANG, P.E.
FLORIDA REGISTRATION
NO. 55983
C.A.N. 28677
December 30th, 2020

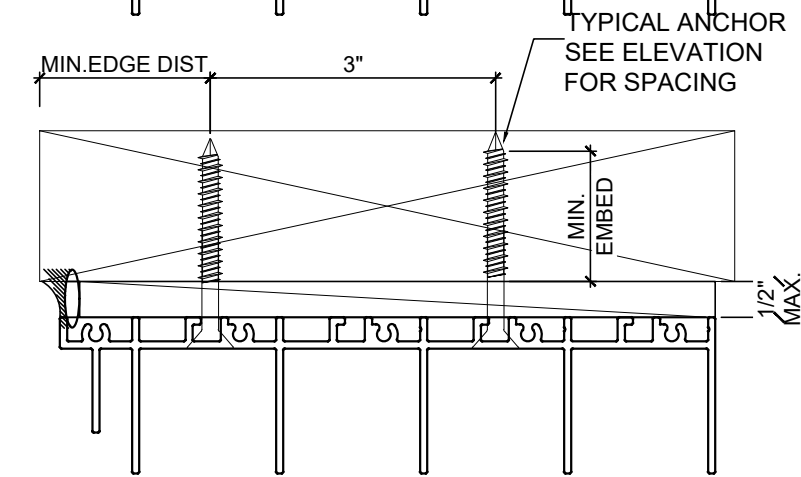
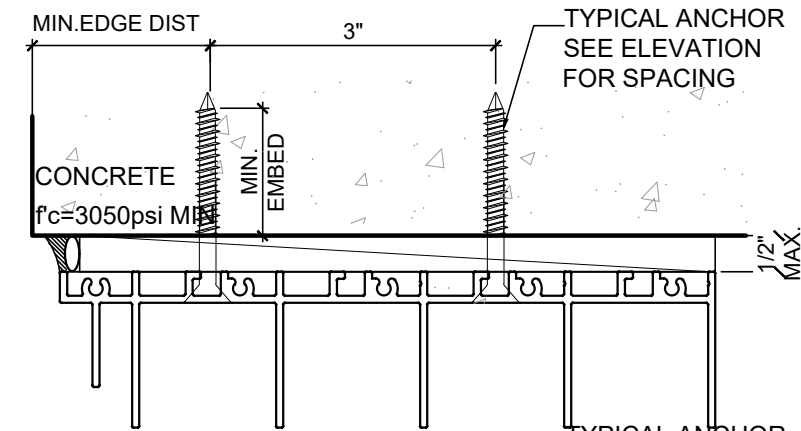
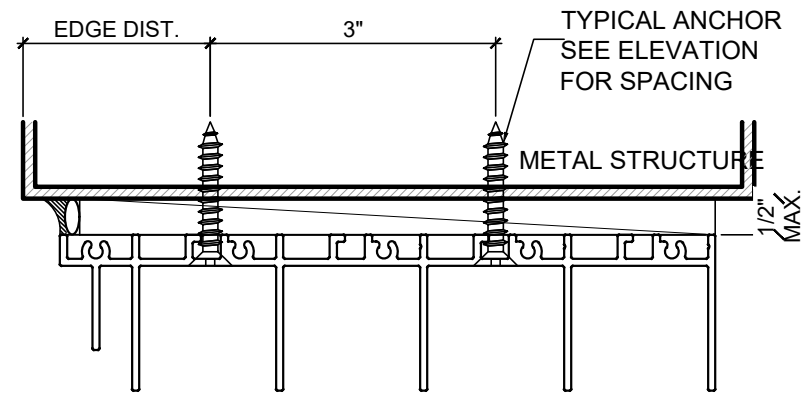
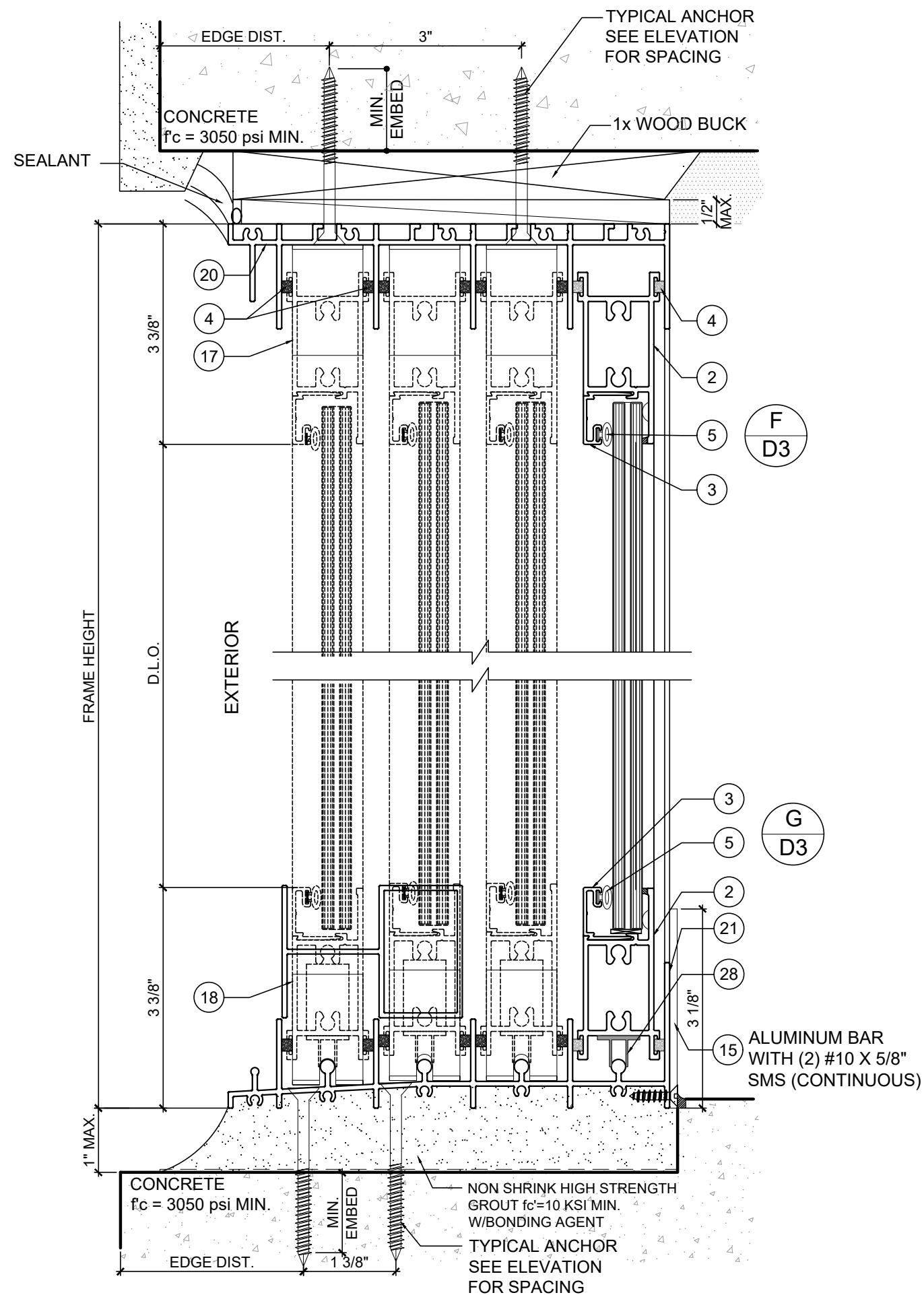
Rev. No.	Date	Drawn By	For Approval	Description
1	12/30/2020	James		

Drawn Date: 12/17/2020 Scale: _____

DRAWING NO. AD15-16

Sheet No. D2

SHEET 6 OF 13



ANCHOR OPTIONS SEE SHEET D1

1X OR 2X WOOD BUCKS AND METAL STRUCTURES NOT BY EMC WINDOWS MUST SUPPORT LOADS IMPOSED BY GLAZING SYSTEM AND TRANSFER THEM TO THE BUILDING STRUCTURE.

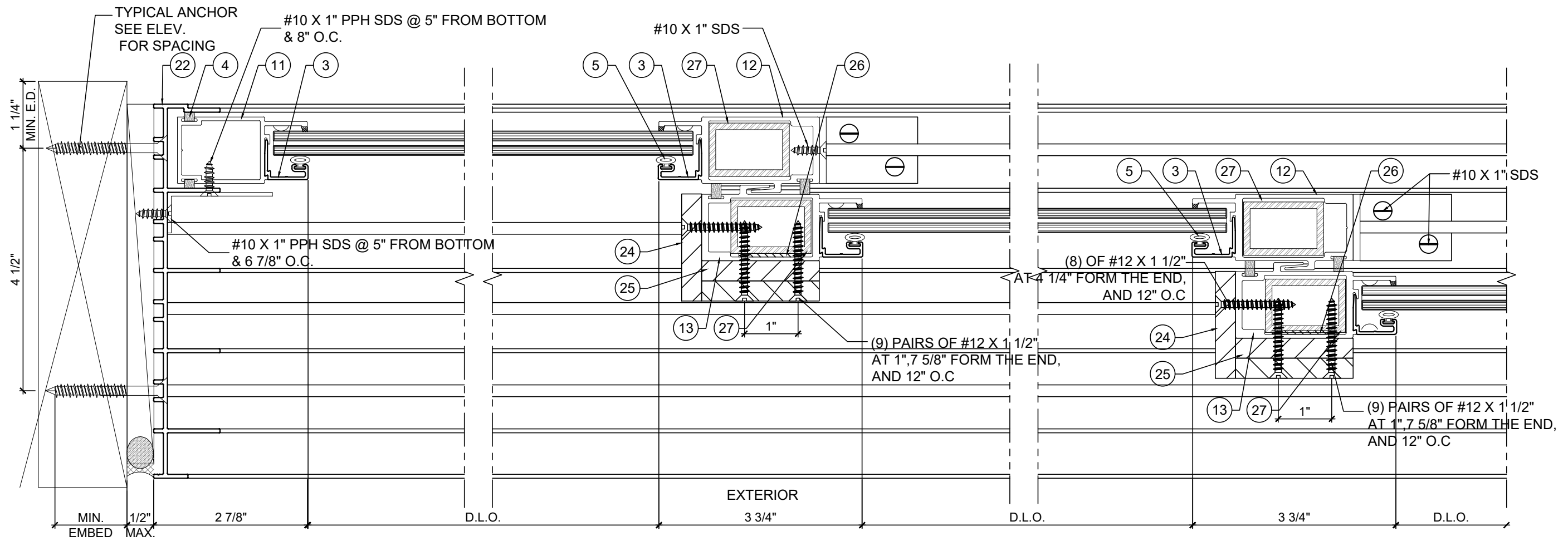
FLORIDA APPROVAL:
 FL #17596
 YIPING WANG, P.E.
 FLORIDA REGISTRATION #55983
 C.A.N. 28677
 December 30th, 2020

MCY ENGINEERING, INC.
 GLAZING CONSULTANTS
 12781 MIRAMAR PARKWAY #301 F. (305)271-0117
 MIRAMAR, FL 33027
 www.MCYEngineering.com mcy@mcyengineering.com

SERIES SG2100 SLIDING GLASS DOOR (L.M.I. & S.M.I.)
EMC WINDOWS AND DOORS, LLC.
 1356 W. 76TH STREET
 HIALEAH, FL 33014
 TEL. (305) 283-6280 EMCWindowsDoors@gmail.com

Rev. No.	Date	Drawn By	For Approval	Description
1	12/30/2020	James		

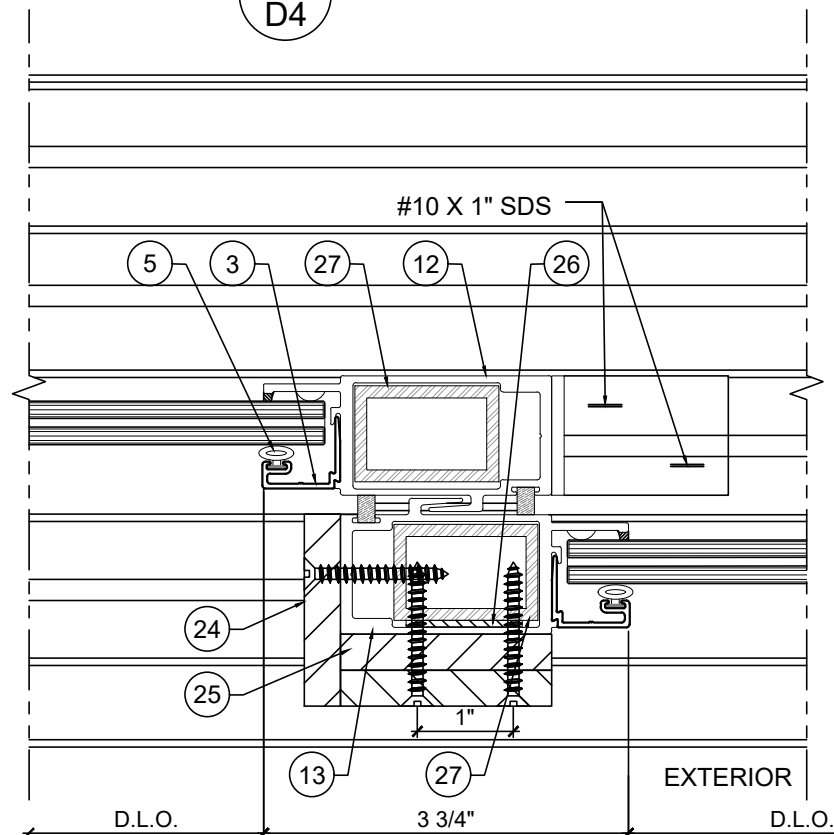
Drawn Date: 12/17/2020 Scale:
 DRAWING NO. AD15-16
 Sheet No. D3
 SHEET 7 OF 13



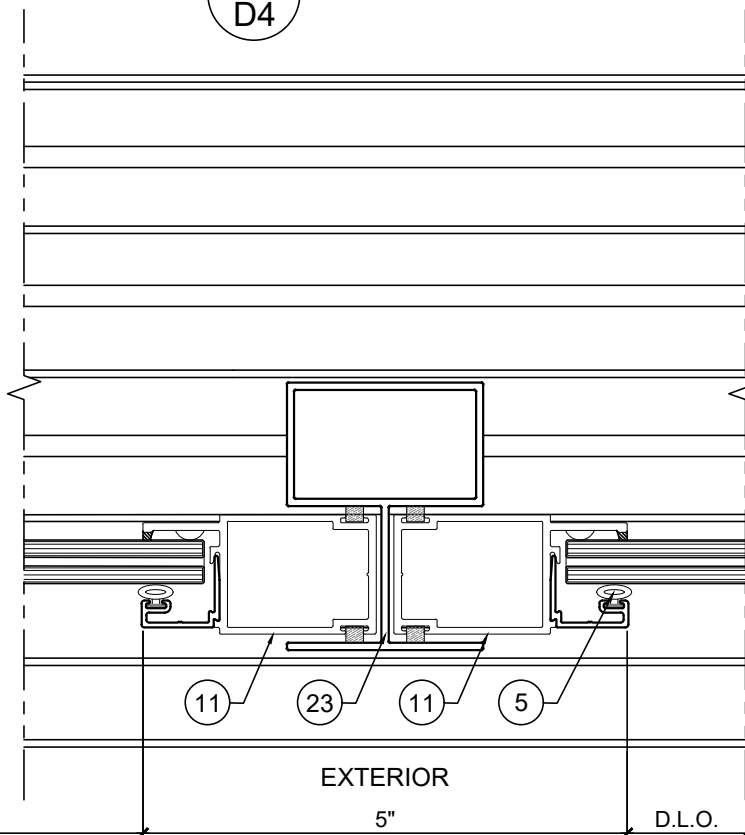
H
D4

I
D4

J
D4



K
D4



L
D4

FLORIDA APPROVAL:
FL #17596

YIPING WANG
YIPING WANG, P.E.
FLORIDA REGISTRATION
NO. 55983
C.A.N. 28677

December 30th, 2020

MCY ENGINEERING, INC.
GLAZING CONSULTANTS
12781 MIRAMAR PARKWAY #301 F. (305)271-0117
MIRAMAR, FL 33027
www.MCYEngineering.com mcy@mcyengineering.com

SERIES SG2100 SLIDING GLASS DOOR (L.M.I. & S.M.I.)
EMC WINDOWS AND DOORS, LLC.
1356 W. 76TH STREET
HALEAH, FL 33014
TEL. (305) 283-6280 EMCWindowsDoors@gmail.com

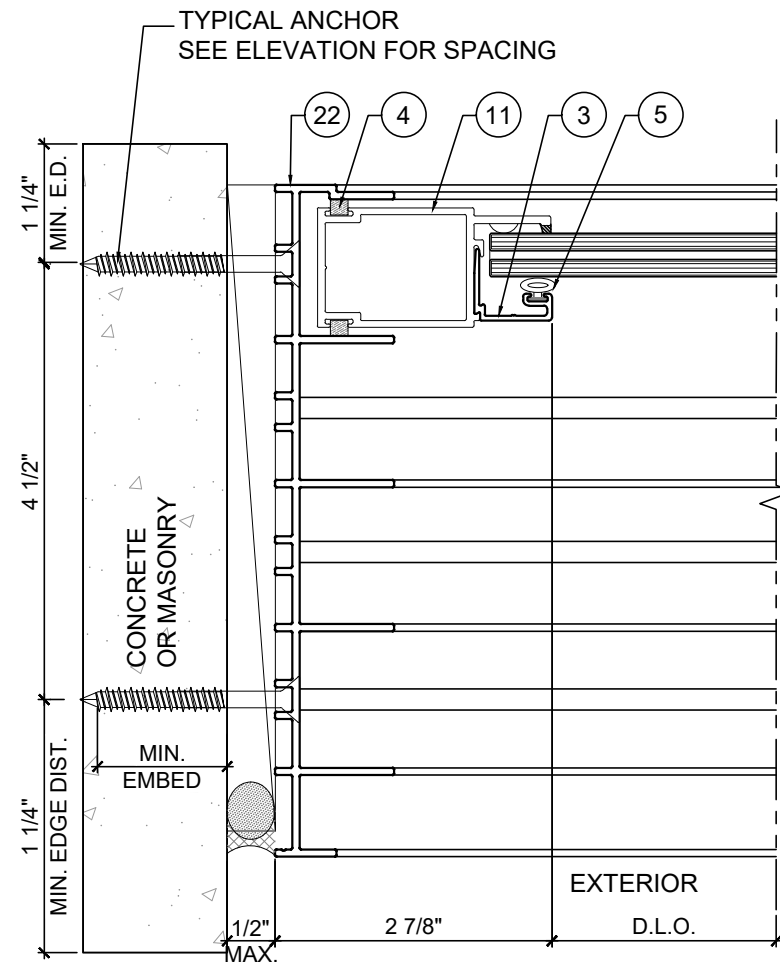
Rev. No.	Date	Drawn By	For Approval	Description
1	12/30/2020	James		

Drawn Date: 12/17/2020 Scale:

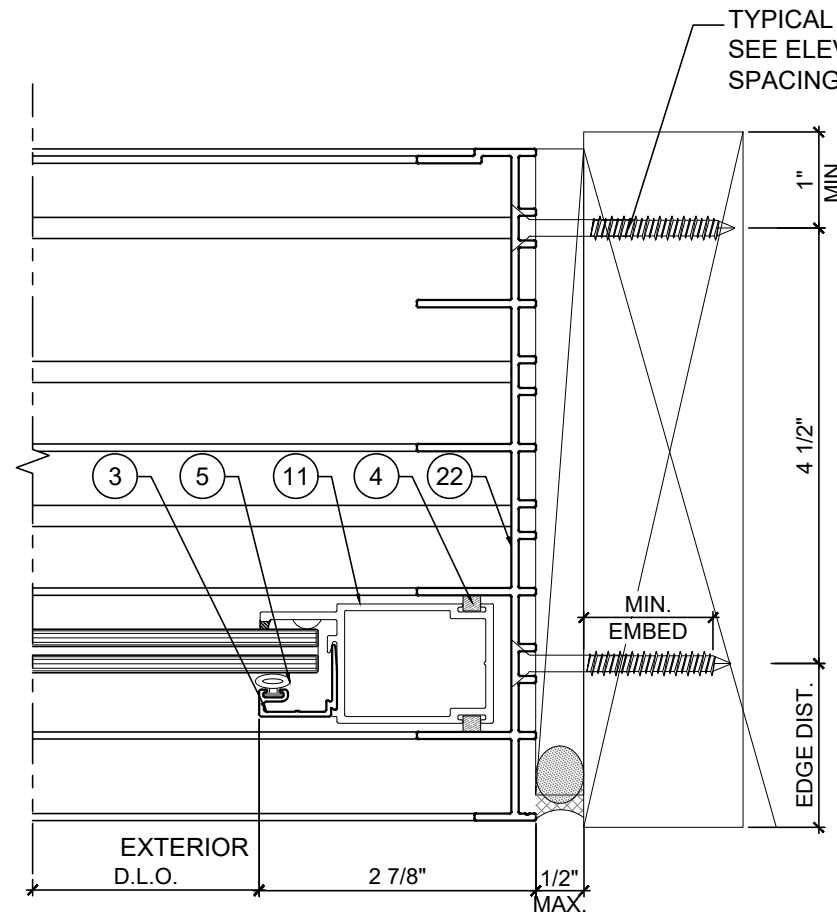
DRAWING NO.
AD15-16

D4

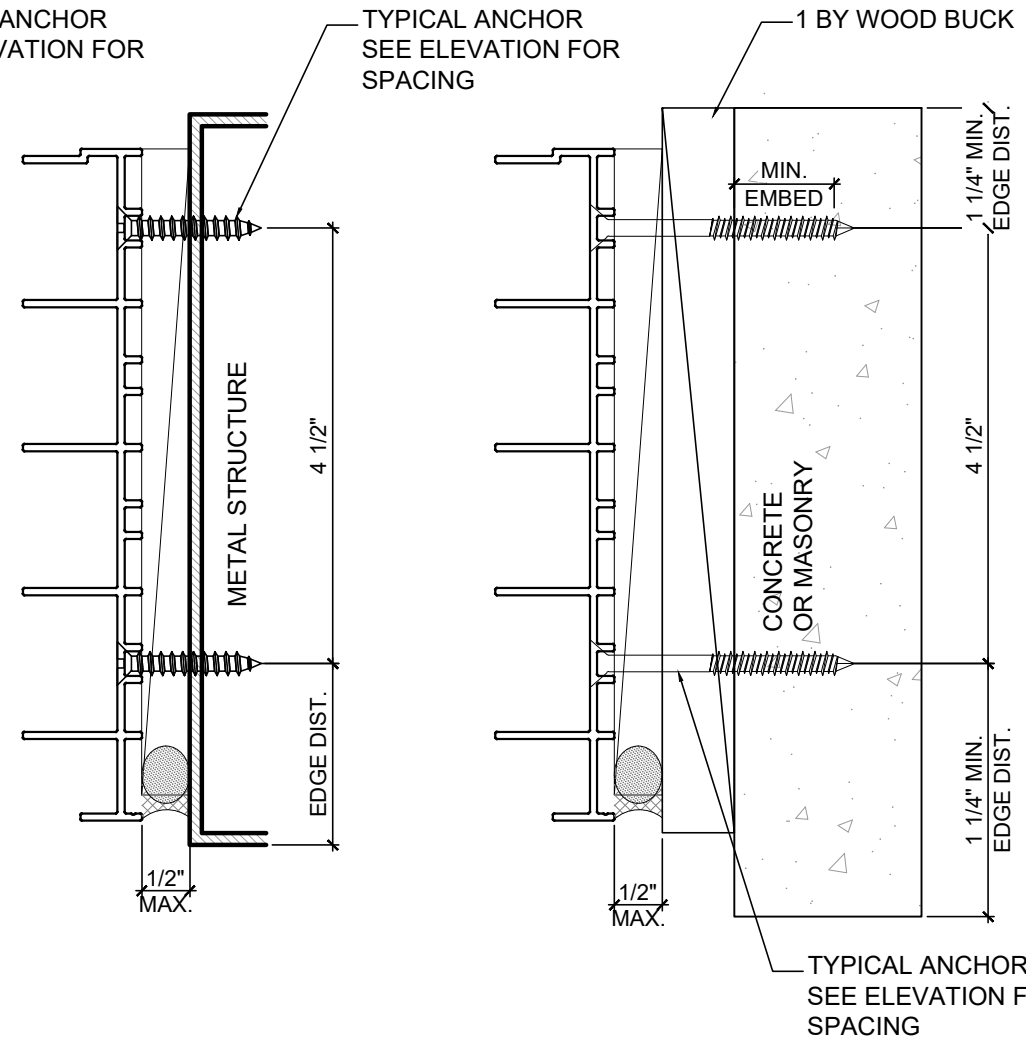
Sheet No.
SHEET 8 OF 13



M
D5



N
D5



MCY ENGINEERING, INC.
GLAZING CONSULTANTS
12781 MIRAMAR PARKWAY #301 F. (305)271-0117
MIRAMAR, FL 33027
www.MCYEngineering.com mcy@mcyengineering.com

SERIES SG2100 SLIDING GLASS DOOR (L.M.I. & S.M.I.)
EMC WINDOWS AND DOORS, LLC.
1356 W. 76TH STREET
HALEAH, FL 33014
TEL. (305) 283-6280 EMCWindowsDoors@gmail.com

FLORIDA APPROVAL:
FL #17596

YIPING WANG
YIPING WANG, P.E.
FLORIDA REGISTRATION
No. 55983
C.A.N. 28677
STATE OF FLORIDA
PROFESSIONAL ENGINEER

December 30th, 2020

Rev. No.	Date	Drawn By	For Approval	Description
1	12/30/2020	James		

Drawn Date	Scale
12/17/2020	

DRAWING NO.
AD15-16

Sheet No.
D5

SHEET 9 OF 13

BILL OF MATERIALS

ITEM #	PART #	DESCRIPTION	MATERIAL	MANUFACTURER/REMARKS
1	SW-43124	ALUM. FRAME HEAD	ALUM. 6063-T5	EMC WINDOWS AND DOORS, LLC.
2	SW-43127	ALUM. PANEL TOP & BOTTOM RAIL	ALUM. 6063-T6	EMC WINDOWS AND DOORS, LLC.
3	SW-43128	ALUM. GLAZING STOP	ALUM. 6063-T6	EMC WINDOWS AND DOORS, LLC.
4	ULTRAPILE	WOOL PILE	WOOL	ULTRAFAB
5	E201	BULB VINYL	VINYL	ULTRAFAB
6	-	SPACER BUTTON	RUBBER	ULTRAFAB
7	DOW 899	STRUCTURAL SILICONE	SILICONE	DOW CORNING 899
8	SW-43125	ALUM. FRAME SILL TRACK	ALUM. 6063-T5	EMC WINDOWS AND DOORS, LLC.
9	39.10	ROLLER ASSEMBLY	STEEL	TRUTH
10	SW-43123	ALUM. FRAME JAMB	ALUM. 6063-T5	EMC WINDOWS AND DOORS, LLC.
11	SW-43126	ALUM. PANEL JAMB	ALUM. 6063-T6	EMC WINDOWS AND DOORS, LLC.
12	SW-43130	ALUM. PANEL INTERLOCK	ALUM. 6063-T6	EMC WINDOWS AND DOORS, LLC.
13	SW-43129	ALUM. PANEL INTERLOCK INVERTED	ALUM. 6063-T6	EMC WINDOWS AND DOORS, LLC.
14	1x1-1/2X1/8"	STEEL TUBE REINFORCEMENT	HRB66	-
15	.119X2.750	WATER BAR	ALUM. 6063-T5	EMC WINDOWS AND DOORS, LLC.
16	SM 5504	JOINT SEALER	SEAM SEALER	SCHNEE MORE HEAD SEAM SELER
17	2.000 X .750	SHEAR ANGLE 1 AT FIXED PANEL JAMB 30" O.C.	ALUM. 6063-T6	EMC WINDOWS AND DOORS, LLC. WITH #10X5/8" PPH SMS
18	2.000 X 1.750	SHEAR ANGLE 2	ALUM. 6063-T5	EMC WINDOWS AND DOORS, LLC.
19	2992	PANEL HOOK LOCK AND HANDLE	METAL	TRUTH
20	-	HEAD (4 TRACK)	ALUM. 6063-T5	EMC WINDOWS AND DOORS, LLC.
21	-	SILL (4 TRACK)	ALUM. 6063-T5	EMC WINDOWS AND DOORS, LLC.
22	-	JAMB (4 TRACK)	ALUM. 6063-T5	EMC WINDOWS AND DOORS, LLC.
23	-	ASTRAGAL	ALUM. 6063-T6	EMC WINDOWS AND DOORS, LLC.
24	-	FLAT BAR 3/8" X 2"	ALUM. 6061-T6511	-
25	-	FLAT BAR 3/8" X 2.20"	ALUM. 6061-T6511	-
26	-	FLAT BAR 0.065" X 1.21"	ALUM. 6063-T5	-
27	-	1"X1 1/2"X1/8" ALUM. REIN. TUBE	ALUM. 6063-T5	-
28	-	ROLLER ASSEMBLY	STEEL	-
29	-	SETTING BLOCKS, DUROMETER 70±5	EPDM	-

MCY ENGINEERING, INC.
GLAZING CONSULTANTS
12781 MIRAMAR PARKWAY #301 F. (305)271-0117
MIRAMAR, FL 33027
www.MCYEngineering.com mcy@mcyengineering.com

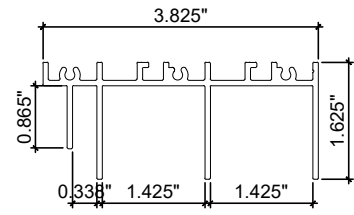
SERIES SG2100 SLIDING GLASS DOOR (L.M.I. & S.M.I.)
EMC WINDOWS AND DOORS, LLC.
1356 W. 76TH STREET
HALEAH, FL 33014
TEL. (305) 283-6280 EMCWindowsDoors@gmail.com

Rev. No.	Date	Drawn By	For Approval	Description
1	12/30/2020	James		

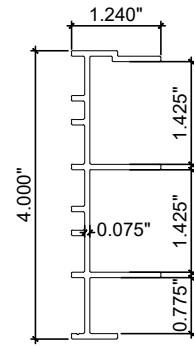
FLORIDA APPROVAL:
FL #17596

YIPING WANG
YIPING WANG, P.E.
FLORIDA REGISTRATION
NO. 55983
C.A.N. 28677
December 30th, 2020

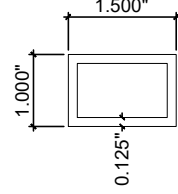
Drawn Date 12/17/2020	Scale
DRAWING NO. AD15-16	
BOM	
Sheet No. SHEET 10 OF 13	



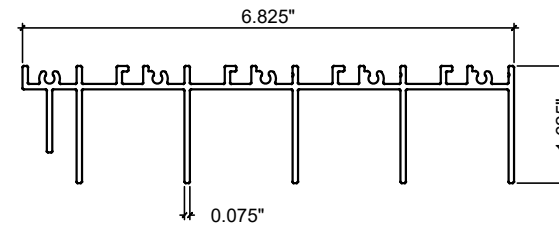
1 FRAME HEAD
6063-T5



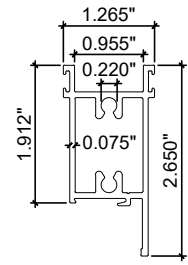
10 FRAME JAMB
6063-T5



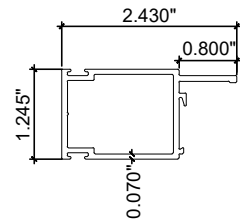
14 REINFORCEMENT TUBE
STEEL



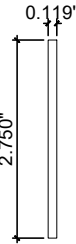
20 HEAD (4 TRACK)
6063-T5



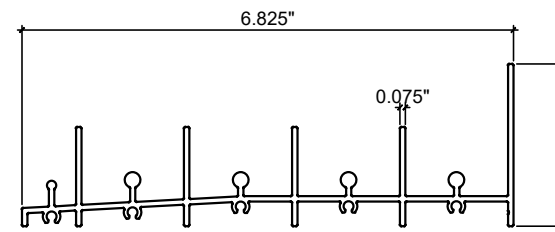
2 PANEL TOP/BOTTOM
6063-T6



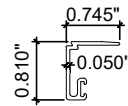
11 PANEL JAMB
6063-T6



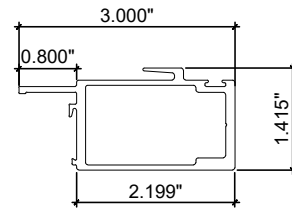
15 WATER BAR
6063-T5



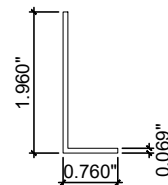
21 SILL (4 TRACK)
6063-T5



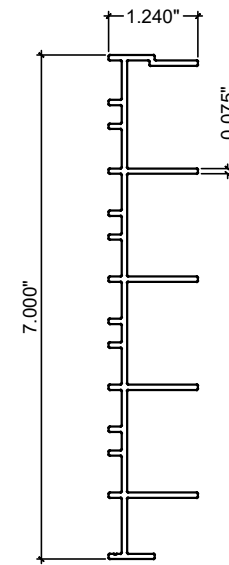
3 GLAZING STOP
6063-T5



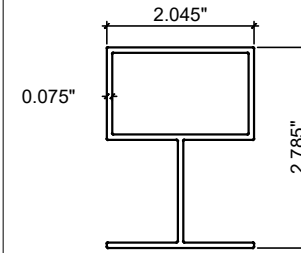
12 PANEL INTERLOCK
6063-T6



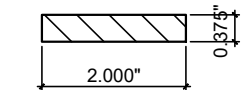
17 SHEAR ANGLE 1
6063-T5



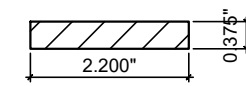
22 JAMB (4 TRACK)
6063-T5



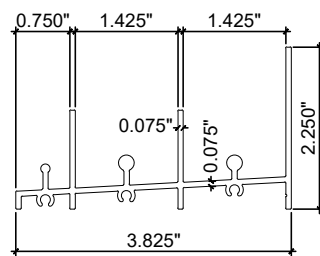
23 ASTRAGAL
6063-T6



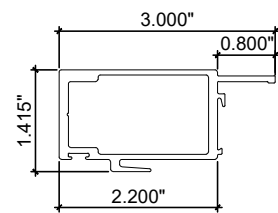
24 FLAT BAR
6061-T6511



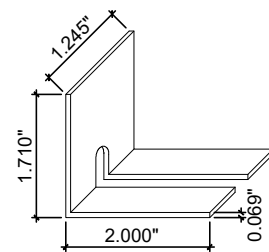
25 FLAT BAR
6061-T6511



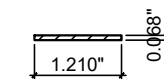
8 FRAME SILL TRACK
6063-T5



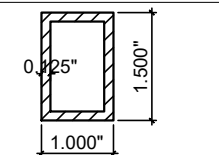
13 PANEL INTERLOCK INVERTED
6063-T6



18 SHEAR ANGLE 2
6063-T5



26 FLAT BAR
6063-T5



27 ALUM. REIN. TUBE
6063-T5

FLORIDA APPROVAL:
FL #17596

YIPING WANG
YIPING WANG, P.E.
FLORIDA REGISTRATION
NO. 55983
C.A.N. 28677
December 30th, 2020

SERIES SG2100 SLIDING GLASS DOOR (L.M.I. & S.M.I.)

EMC WINDOWS AND DOORS, LLC.

1356 W. 76TH STREET
HALEAH, FL 33014

TEL. (305) 283-6280 EMCWindowsDoors@gmail.com

MCY ENGINEERING, INC.

GLAZING CONSULTANTS

12781 MIRAMAR PARKWAY #301 F. (305) 271-0117
MIRAMAR, FL 33027

www.MCYEngineering.com mcy@mcyengineering.com

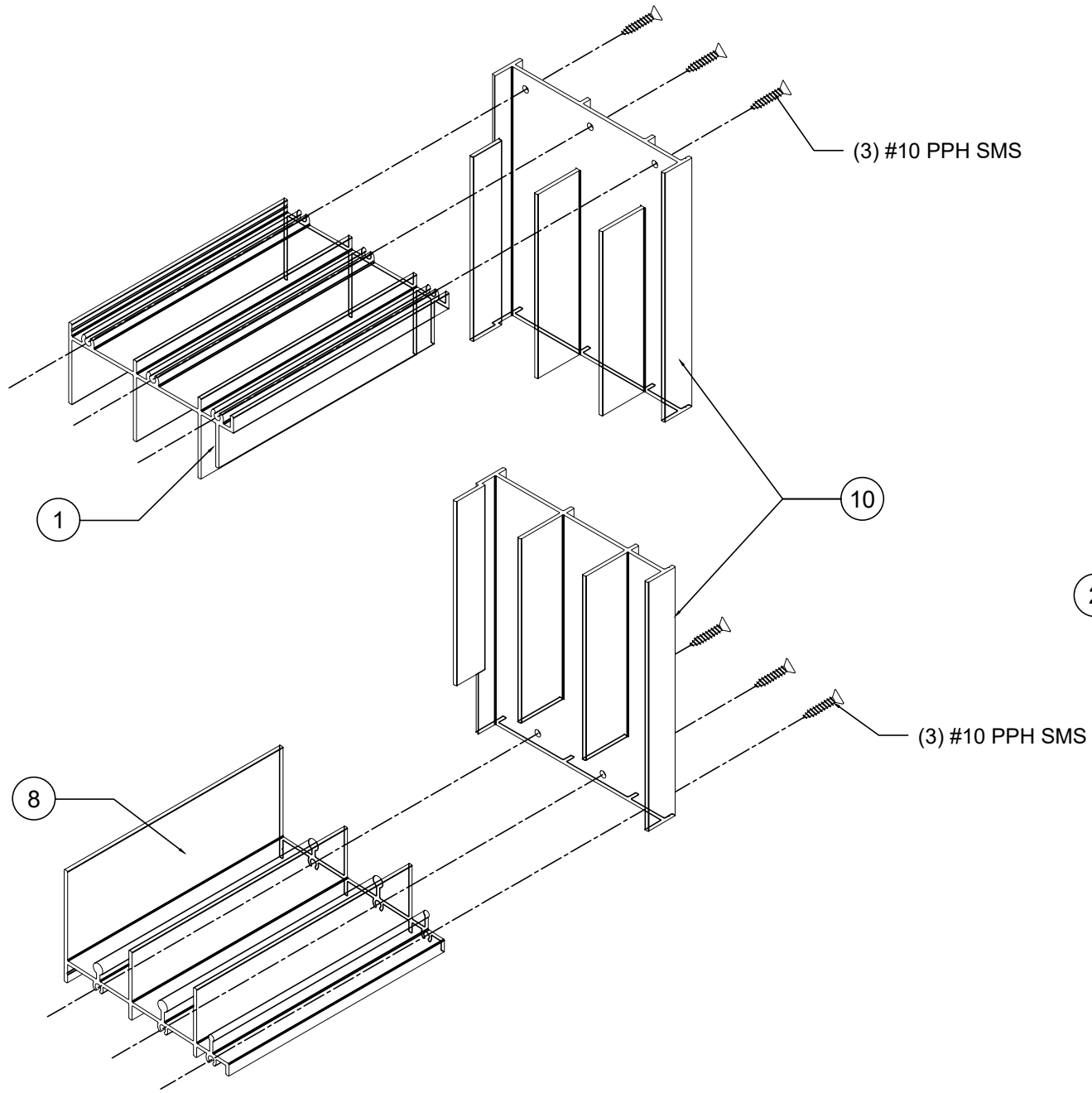
Rev. No.	Date	Drawn By	For Approval	Description
1	12/30/2020	James		

Drawn Date: 12/17/2020 Scale:

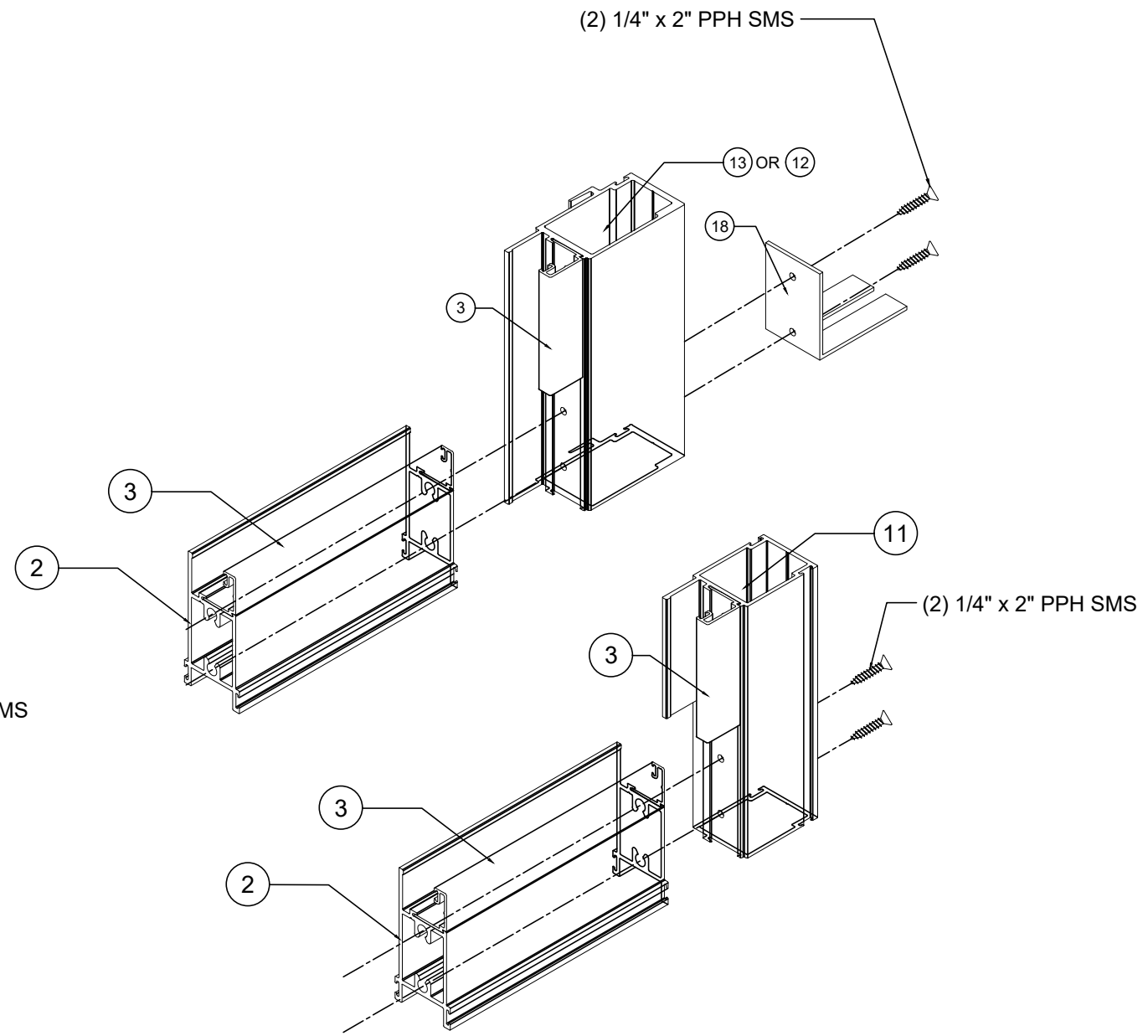
DRAWING NO.
AD15-16

MATERIAL

Sheet No.
SHEET 11 OF 13



**JAMB CONNECTION
TO FRAME HEAD & SILL**



PANEL CONNECTION

FLORIDA APPROVAL:
FL #17596

YIPING WANG
YIPING WANG, P.E.
FLORIDA REGISTRATION
NO. 55983
C.A.N. 28677
December 30th, 2020

SERIES SG2100 SLIDING GLASS DOOR (L.M.I. & S.M.I.)
EMC WINDOWS AND DOORS, LLC.
1356 W. 76TH STREET
HALEAH, FL 33014
TEL. (305) 283-6280 EMCWindowsDoors@gmail.com

MCY ENGINEERING, INC.
GLAZING CONSULTANTS
12781 MIRAMAR PARKWAY #301 F. (305) 271-0117
MIRAMAR, FL 33027
www.MCYEngineering.com mcy@mcyengineering.com

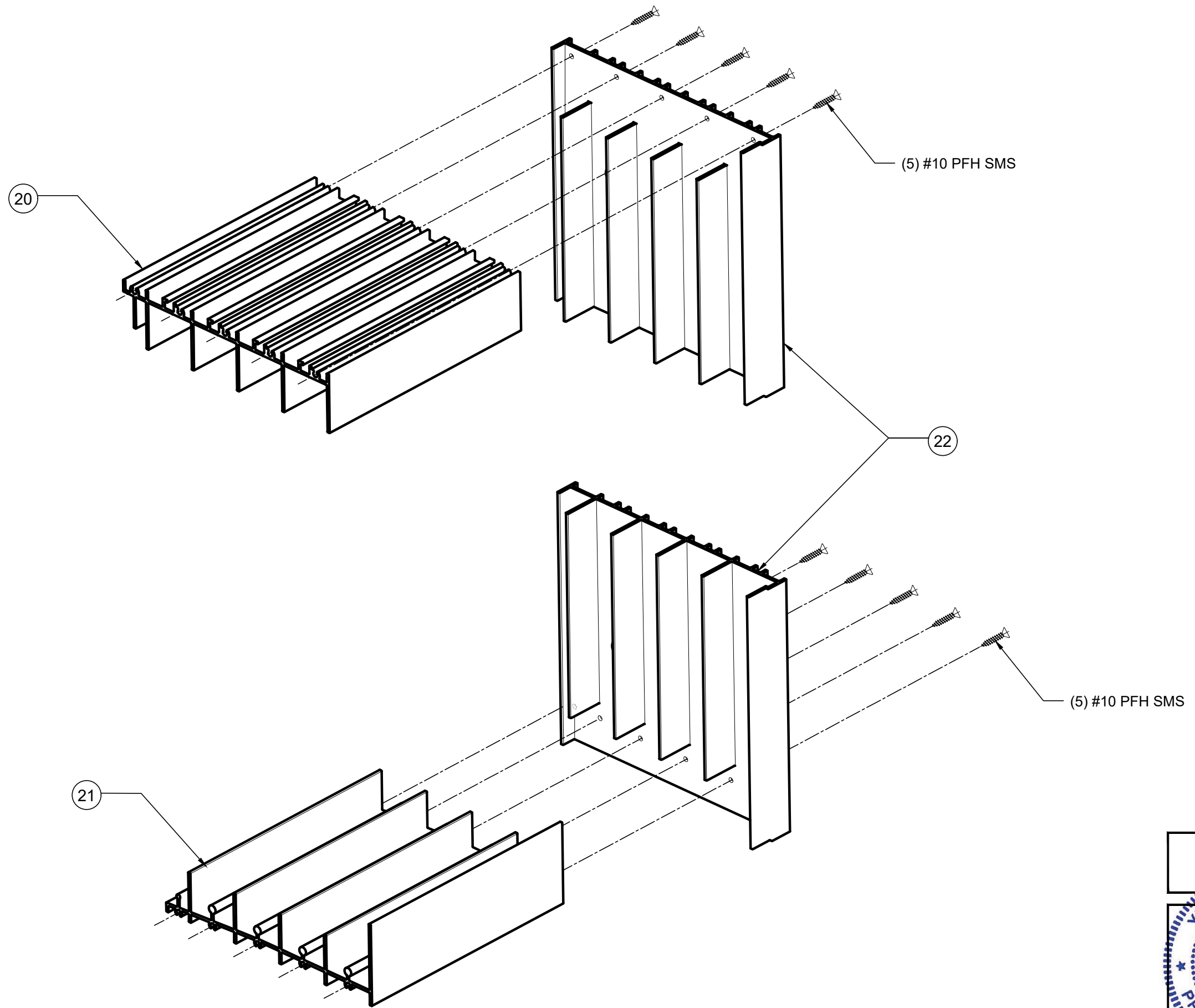
Rev. No.	Date	Drawn By	For Approval	Description
1	12/30/2020	James		

Drawn Date: 12/17/2020 Scale: _____

DRAWING NO. AD15-16

ASSEMBLE

Sheet No. SHEET 12 OF 13



**JAMB CONNECTION
TO FRAME HEAD & SILL**

FLORIDA APPROVAL:
FL #17596



December 30th, 2020

SERIES SG2100 SLIDING GLASS DOOR (L.M.I. & S.M.I.)
EMC WINDOWS AND DOORS, LLC.
1356 W. 76TH STREET
HIALEAH, FL 33014
TEL. (305) 283-6280 EMCWindowsDoors@gmail.com

Rev. No.	Date	Drawn By	For Approval	Description
1	12/30/2020	James		

Drawn Date: 12/17/2020
Scale:

DRAWING NO.
AD15-16

ASSEMBLE

Sheet No.
SHEET 13 OF 13

MCY ENGINEERING, INC.
GLAZING CONSULTANTS
12781 MIRAMAR PARKWAY #301 F. (305)271-0117
MIRAMAR, FL 33027
www.MCYEngineering.com mcy@mcyengineering.com