

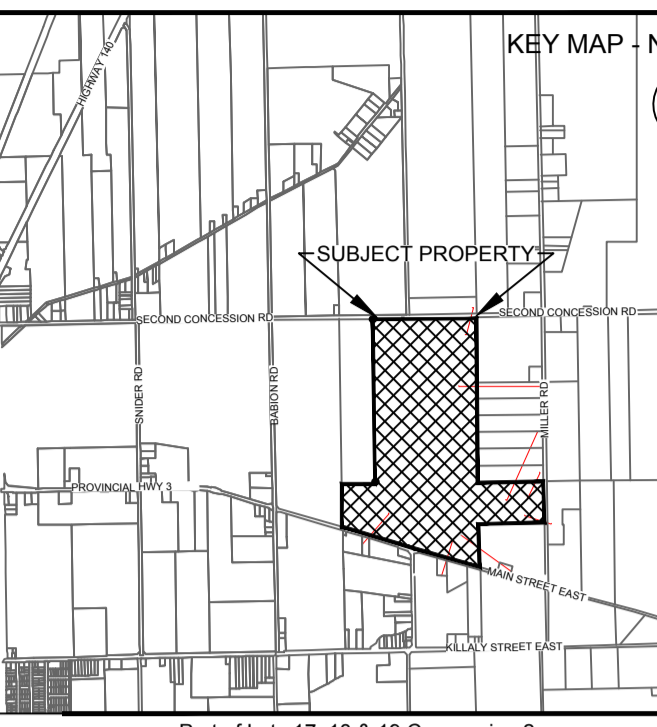


APPLICANT
PORT COLBORNE QUARRIES INC.

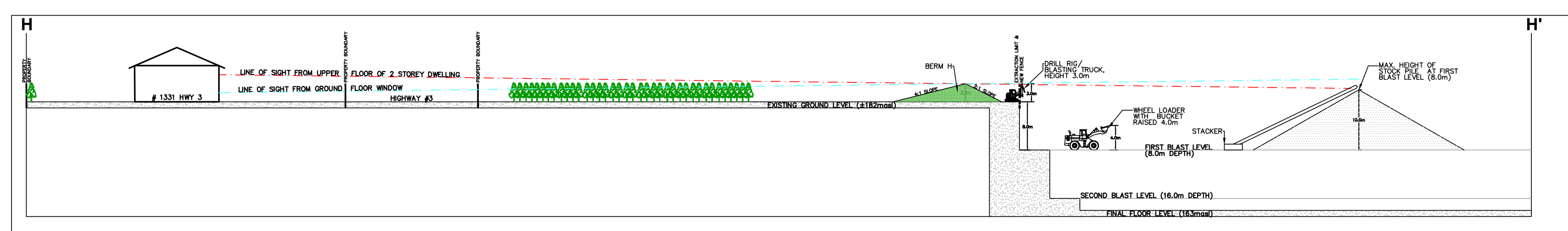
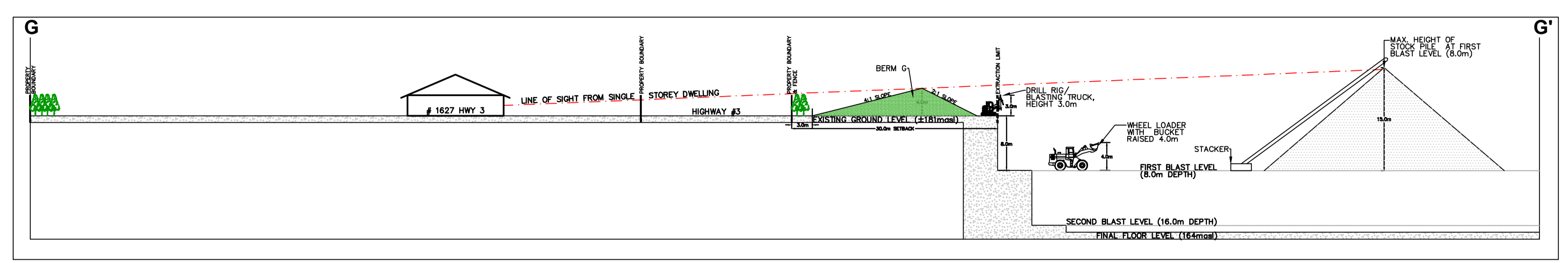
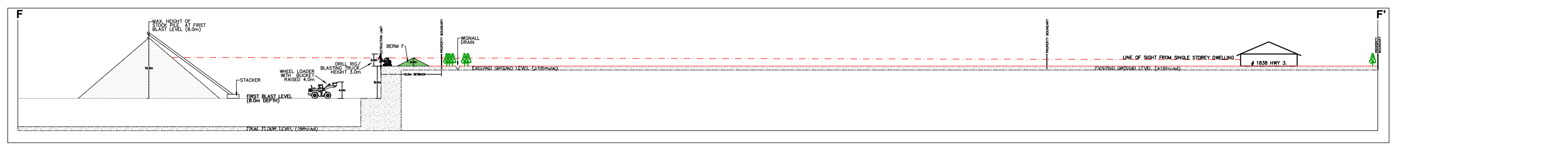
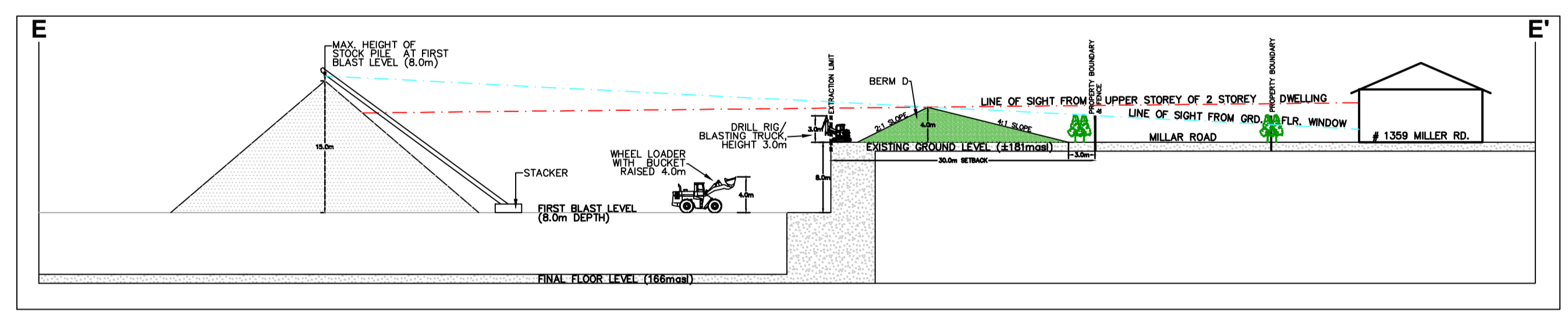
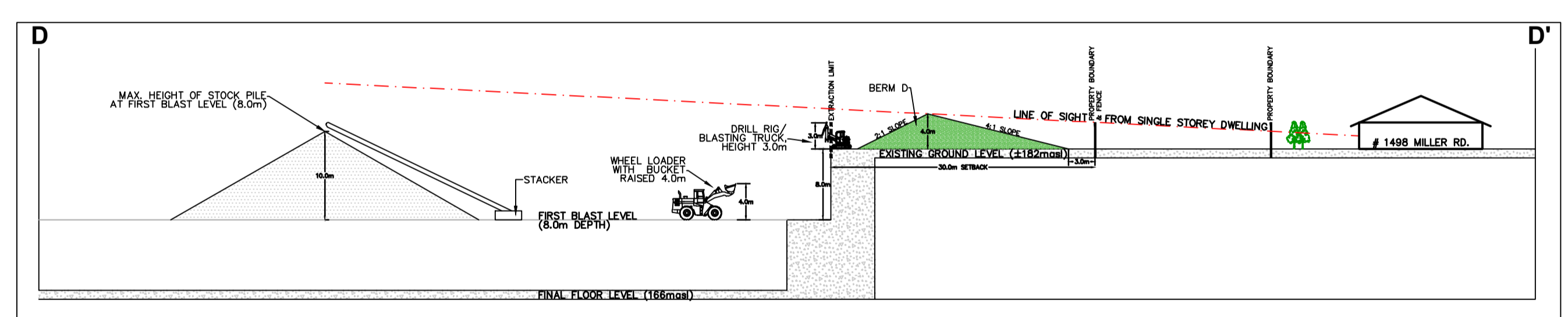
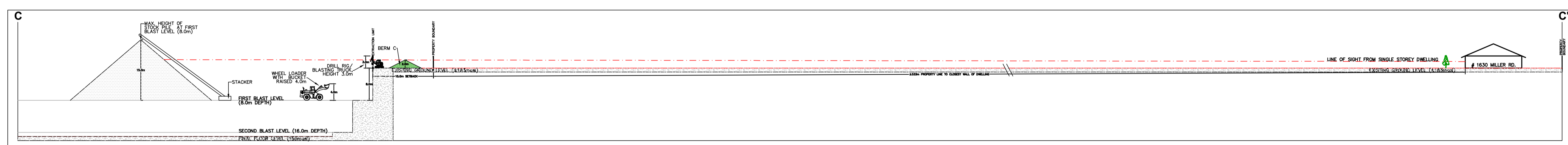
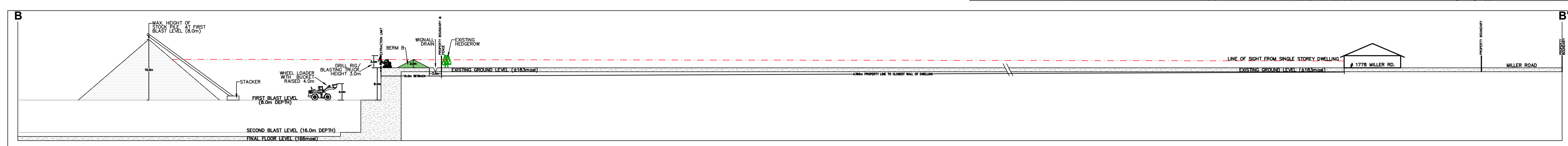
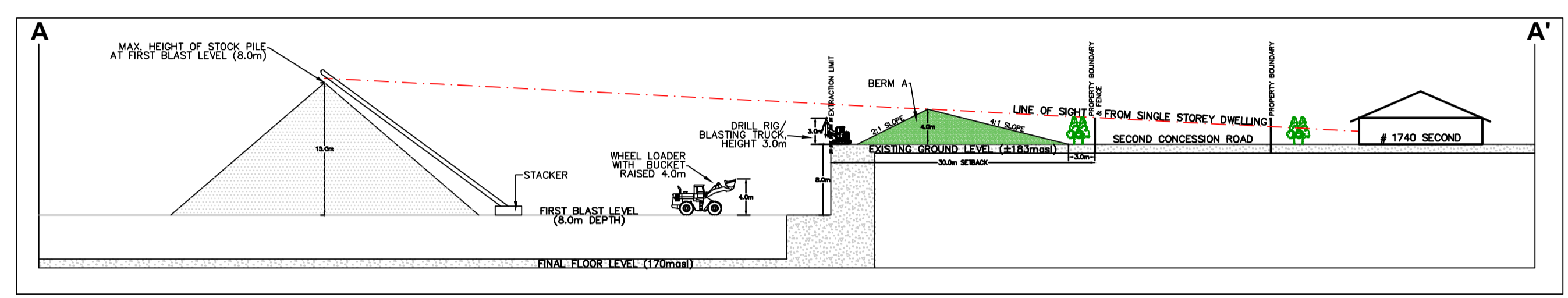
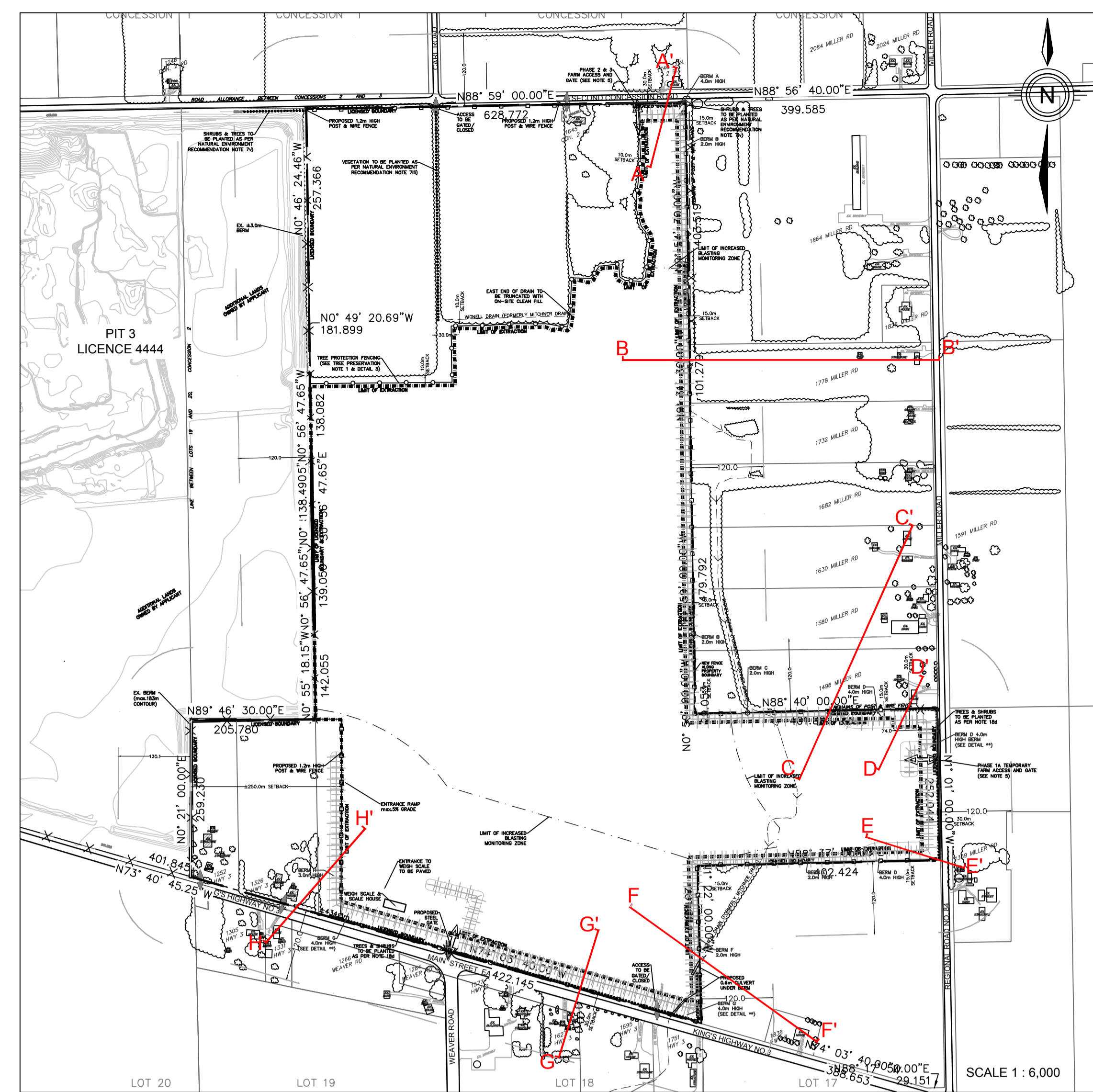
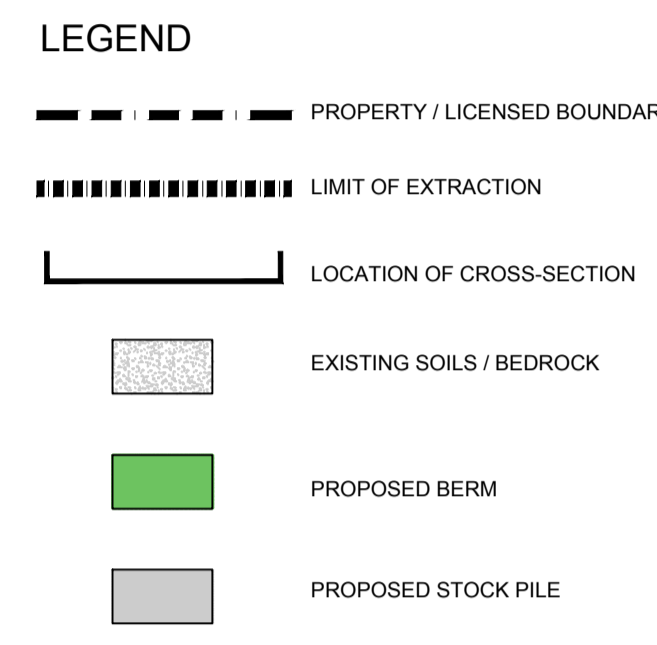
222 MARTINDALE ROAD, P.O. BOX 1116
ST. CATHERINES, ON, L2R 7A3

COPYRIGHT
This drawing has been prepared solely for the intended use. Any reproduction or distribution for any purpose other than authorized by IBI Group is prohibited. Written consent must be obtained from IBI Group in advance. The job and IBI Group shall be informed of any variations from the dimensions and conditions shown on the drawing. This drawing shall be submitted to IBI Group for general concurrence before proceeding with fabrication.

IBI Group Professional Services (Canada) Inc.
is a member of the IBI Group of companies



Part of Lots 17, 18 & 19 Concession 2
and R.P. 599-16702 Part of Road Allowance
between Lot 18 & 19 Concession 2,
in former Township of Humberstone,
the City of Port Colborne,
Region of Niagara



DATE	BY	DESCRIPTION
		SITE PLAN AMENDMENTS
		REVISIONS PRIOR TO APPROVAL

SITE DATA

AREA TO BE LICENSED	±106.29 ha
AREA TO BE EXTRACTED	± 71.12 ha
EX. DISTURBED AREA	N/A
TOTAL LAND PARCEL	± 106.29 ha

THESE SITE PLANS HAVE PREPARED UNDER THE AGGREGATE RESOURCES ACT FOR A CLASS LICENSE, CATEGORY 2. THEY HAVE BEEN PREPARED BY THE UNDERSIGNED BY THE AUTHORITY OF MINISTRIAL APPROVAL AS SPECIFIED IN THE AREA SECTION 8 (4).

DATE: _____

IBI GROUP
Suite 101 - 410 Albert Street
Waterloo ON N2L 3V3 Canada
Tel: 519 585 2555
ibigroup.com

PORT COLBORNE QUARRIES INC.
PIT 3 EXTENSION

SCALE: 1: 500
0 5 10 15 20m

PROJECT NO: 115774
DRAWN BY: D.R.S.
PROJECT MGR: D.R.S.
CHECKED BY: D.R.S.
APPROVED BY: D.R.S.

SHEET TITLE: VISUAL IMPACT CROSS-SECTIONS
SHEET NUMBER: 1 of 1
ISSUE: 1

File Location: J:\115774_PortColborne\3-Drawings\SitePlan\3-EXT\N115774-03_Ext_Cross-sec.dwg
 Last Saved: December 17, 2020, by: anna.tilley
 Printed: Thursday, December 17, 2020 2:27:11 PM by: anna.tilley