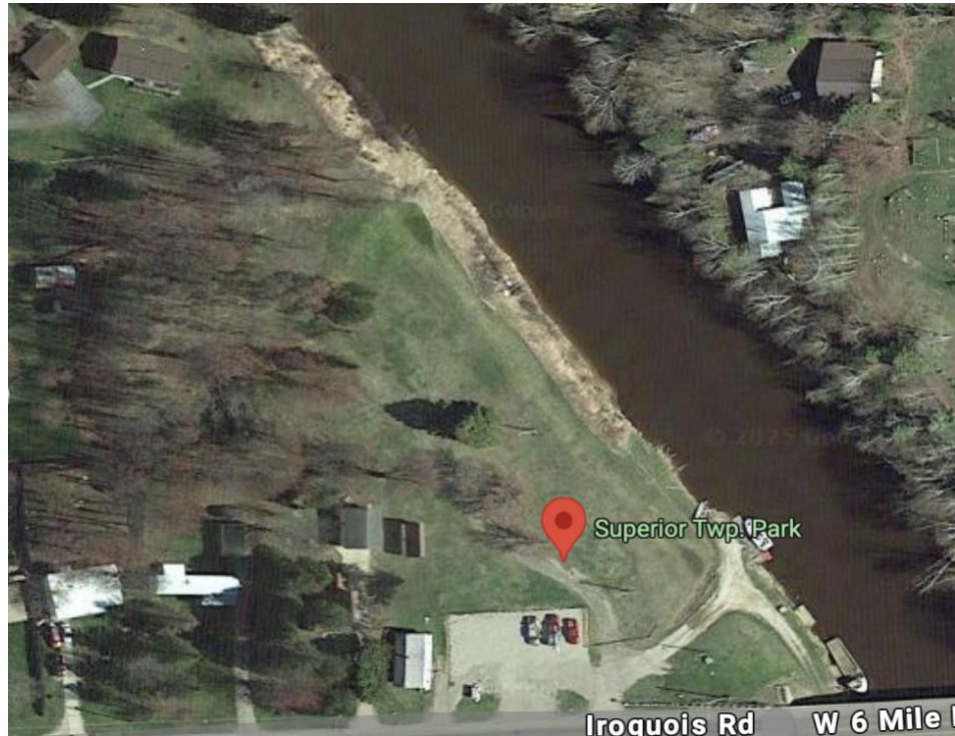


# SUPERIOR TOWNSHIP RECREATION PLAN 2025-2030



Superior Township  
Chippewa County  
Michigan

Prepared for:  
Superior Township Board  
Prepared by:

Superior Township Recreation Committee  
With assistance from EUP Regional Planning & Development

# RECREATION PLAN TABLE OF CONTENTS

## Table of Contents

<b>PURPOSE .....</b>	<b>1</b>
<b>COMMUNITY DESCRIPTION.....</b>	<b>2</b>
Demographic Background .....	3
Economics and Income Statistics .....	3
ALICE Data and Indicators of Well-Being .....	4
Superior Township Income in Past 12 months .....	5
Disability .....	6
Housing .....	6
Social.....	7
<b>ADMINISTRATIVE STRUCTURE.....</b>	<b>8</b>
Superior Township Organizational Chart.....	8
Annual and Projected Budgets.....	9
Funding Sources.....	10
Role of Volunteers .....	10
Relationships with other agencies .....	10
<b>RECREATION &amp; RESOURCE INVENTORY .....</b>	<b>11</b>
Status Report of All Grant-Assisted Parks and Recreation Facilities .....	12
Recreational Inventory.....	12
Inventory of Existing Recreational Facilities .....	13
<b>DESCRIPTION OF PLANNING &amp; PUBLIC INPUT PROCESS.....</b>	<b>25</b>
SUPERIOR TOWNSHIP PARK PLANNING .....	28
<b>GOALS &amp; OBJECTIVES.....</b>	<b>29</b>
<b>ACTION PROGRAM .....</b>	<b>32</b>
<b>SUPPORTING DOCUMENTATION.....</b>	<b>38</b>

## PURPOSE

The purpose of the Superior Township Recreation Committee is to work in cooperation with the Superior Township Board and residents of the Township who participated in this effort. The Plan is an updated version of the 2015-2020 Parks and Recreation Master Plan. Its composition and adoption process should comply with the Michigan Department of Natural Resources (MDNR) Guidelines for the Development of Community Park, Recreation, Open Space and Greenway Plans. The Plan's adoption should qualify the Township to apply for MDNR grants for a total of five years after its adoption.

The purpose of the 5-year recreation plan for Superior Township is to develop recreational projects and improve existing facilities for residents and tourists, as well as increase tourist visits and lengths of stay, thus creating more local employment. This plan is meant to be a functional plan that can be amended to respond to the changing needs of the township. The plan will act as a guide for the continuing development and enhancement of recreational facilities in the township.

This Plan was established by identifying community needs in the Superior Township, holding discussions during public meetings, considering State recreational standards, and input from the Parks and Recreation Public Survey. The Superior Township is not financially obligated to complete any of the future projects proposed by the Parks and Recreation Board. However, the Township Board supports community amenities that reflect the best qualities of Township.

## COMMUNITY DESCRIPTION

Superior Township is situated in the central part of Chippewa County. It lies within the area described T46N and R2, R3, and R4 west. As shown on the Superior Township Base Map, the entire eastern boundary joins Dafter Township, the southern boundary with Kinross Township, the western boundary with Chippewa Township and most of the northern boundary with Bay Mills Township. A small area on the northern border has waterfront access to Lake Superior at Waishkey Bay.

Superior Township is very rural in nature. Brimley-an unincorporated town and the only community within the township – provides residential, commercial, educational and social services. Some mixed-use development of residential and commercial exists along M-28 and 6 Mile Rd, and along the shoreline.

It lies within the route of scenic Curley Lewis Memorial Highway (Whitefish Bay Scenic Byway) to Sault Ste. Marie which is an ideal location for commuters to stop in the area.

The total area of Superior Township is about 104 square miles (66,560 acres) of which 85% is forested. In terms of land ownership, 65% of the land is public, 34% private and 1% is corporate. Major paved roads in Superior Township include M-28, M-221, 6 Mile Rd/ Lake Shore Drive, and Ranger Rd.

## Demographic Background

### Superior Township

**County:** Chippewa County

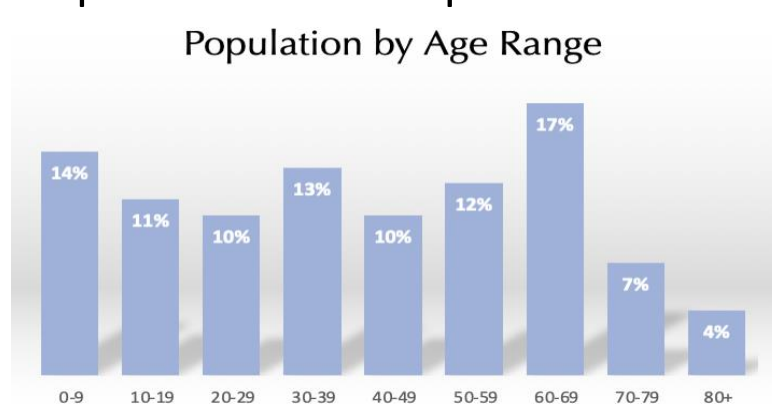
**Area (mi²):** 102.985

**State:** Michigan

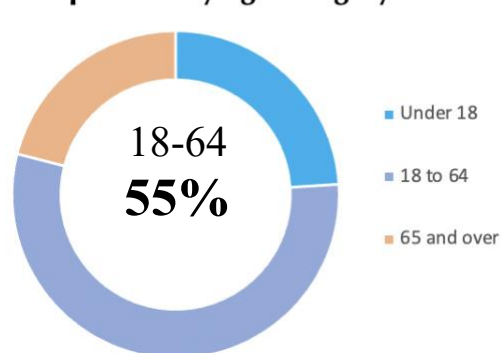
Superior township is located in Chippewa County, Michigan. Superior township has a 2025 population of **1,273**. Superior township is currently growing at a rate of 0.47% annually and its population has increased by 2.33% since the most recent census, which recorded a population of **1,244** in 2020. The average household income in Superior Township is \$72,917 with a poverty rate of 15.8%. The median age in Superior Township is 43.1 years: 39 years for males, and 44.8 years for females.

## Population and People

Population by Age Range



Population by age catagory



## Economics and Income Statistics

### 2023 Point in Time Data

Population: 1,287      Number of Households: 484

Median Household Income: \$72,917 ± \$7,209

Labor Force Participation Rate: 60.4% ± 6.2%

Average per capita income is \$42,216.

The poverty rate stands at 15.8%.

*2023 American Community Survey 5-Year Estimates*

## ALICE Data and Indicators of Well-Being

Having a low income is often associated with lower levels of education, higher rates of unemployment, and poorer health. Communities that have been able to disrupt these associations can provide important insights into how to change environments or policies to support ALICE households. Tracking relationships between ALICE households and other variables at state and county levels can also help stakeholders ask important questions and target resources where they can have the greatest impact.

The information below shows the percentage of households below the ALICE Threshold (poverty + ALICE) — households that cannot afford the basics in the communities where they live — along with additional indicators of well-being.

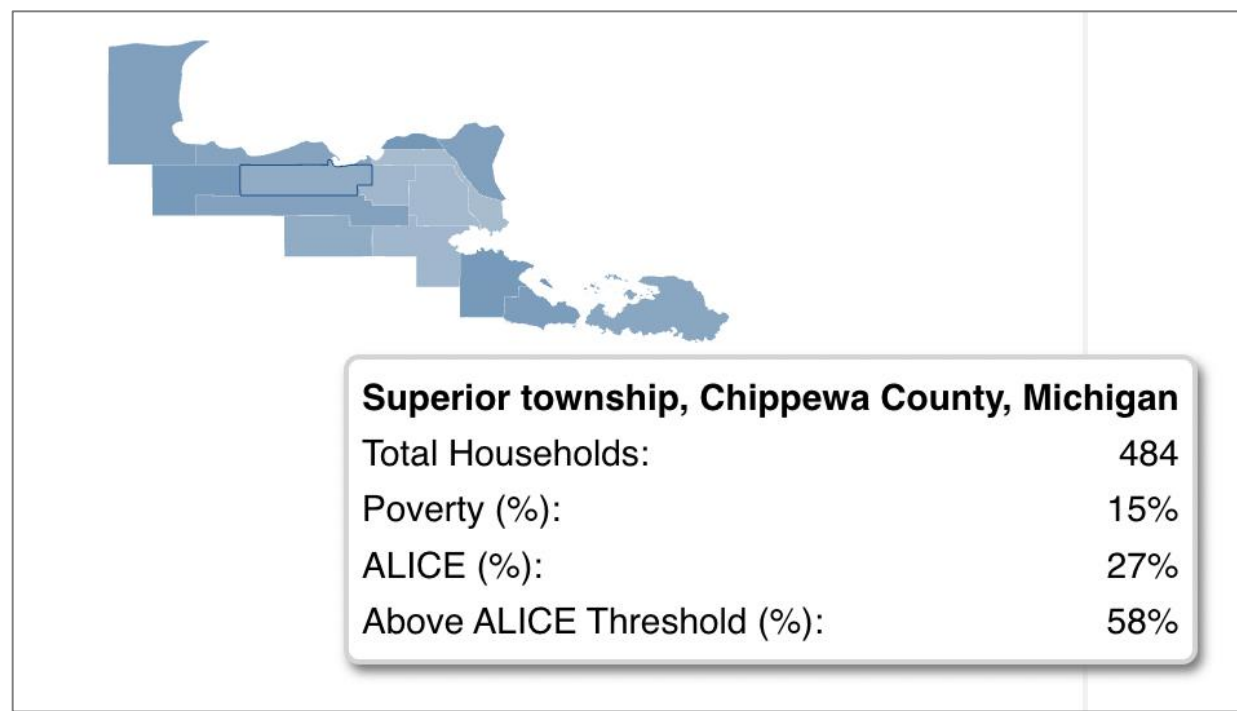
Although the information below does not give specific numbers to Superior Township, it does represent the county it resides in.

### Access to Parks

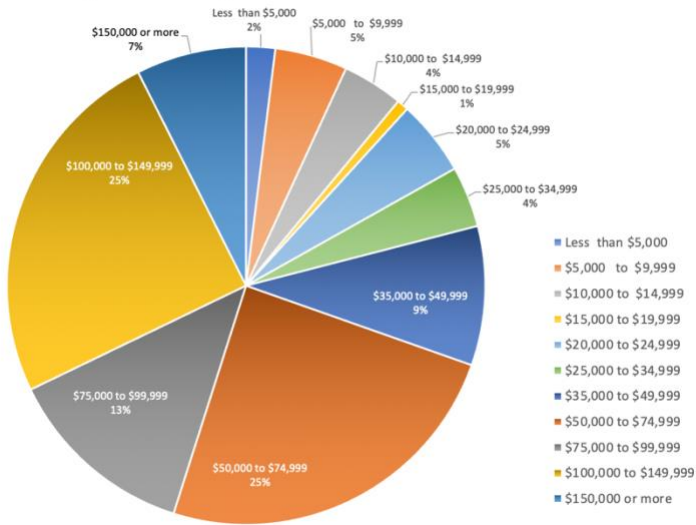
Percent Below ALICE Threshold, 2023 and Access to Parks, 2020

County: **Chippewa**  
State: **Michigan**  
Year: **2023**  
Percent Below ALICE Threshold: **45%**

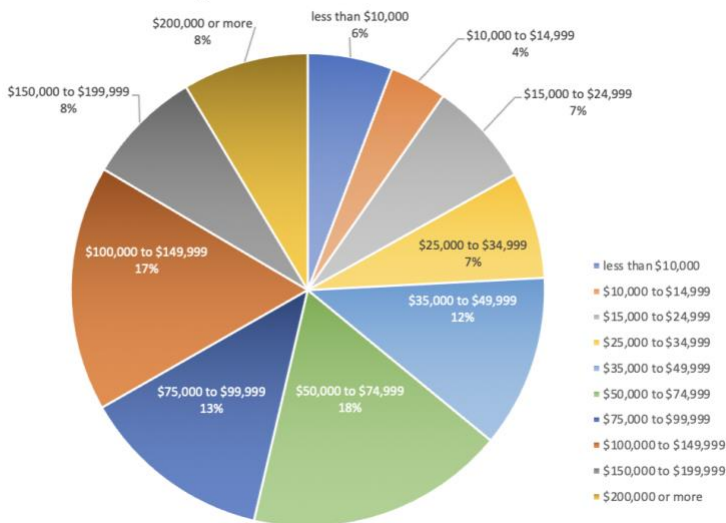
County: **Chippewa**  
State: **Michigan**  
Title: **Access to Parks**  
Year: **2020**  
Value: **70.10**



**Superior Township Household Income in Past 12 Months**



**Michigan household Income in Past 12 months**



## Superior Township Income in Past 12 months

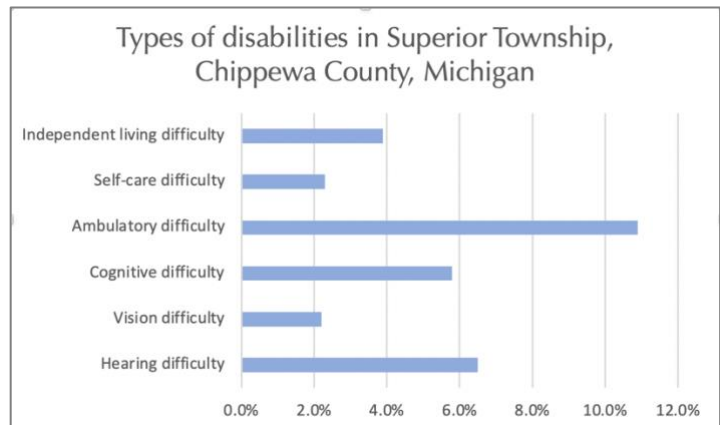
*Median Household Income in Superior township, Chippewa County, Michigan*  
**\$72,917 ± \$7,209**

Superior Township compared to the State of Michigan has better numbers over all but, also keep in mind that the Construction of a new Soo Lock which began in 2019, and it is expected to take up to 10 years to complete, has significantly impacted the local area with the increased labor workers in the area.

Economically, the project has increased tourism, brought numerous jobs and investment, while also created temporary disruption in affordable housing availability.

## Disability

Superior Township is aware of the needs of the disabled, and has made it a goal to make existing recreational sites as ADA accessible as possible, and ensuring future recreational opportunities are also ADA accessible. The latest American Community Survey (2023: ACS 5-year estimate) data shows 16.4% of Superior Township's population has a disability. The table below shows a breakdown of Superior Township's population with a disability.



## Housing

### Units & Occupancy

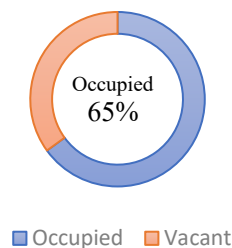
**781**

Number of housing units

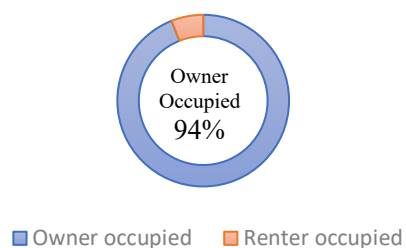
Chippewa County: 20,340

Michigan: 4,599,683

### Occupied vs Vacant



### Ownership of occupied units

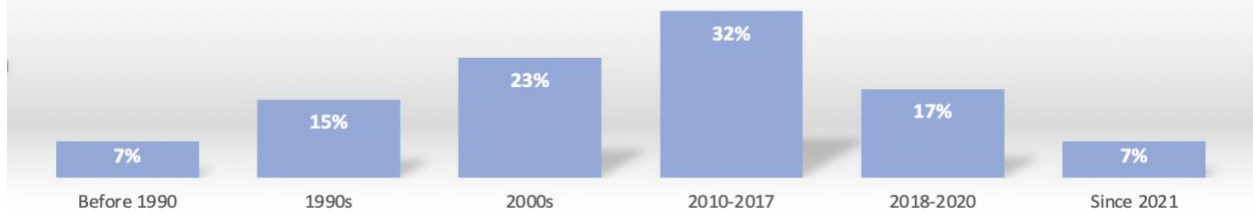


NOTE: Superior Township in Chippewa County, Michigan offers a mix of residential properties, including houses, vacant lots, and even cabins, with some being waterfront properties on Lake Superior. Superior Township, is known for its natural beauty that makes it a popular vacation destination and location for vacation homes.



## Social

### Year Moved in, by percentage of population



### Educational attainment

94.1%

High school grad or higher

About the same as the rate in Chippewa County: 92.8%

About the same as the rate in Michigan: 91.9%

22.1%

Bachelor's degree or higher

About the same as the rate in Chippewa County: 21.9%

About the same as the rate in Michigan: 31.8%

### Place of birth

1.3%

Foreign-born population

About two-fifths of the rate in Chippewa County: 3.2%

About one-fifth of the rate in Michigan: 7%

### Veteran Status

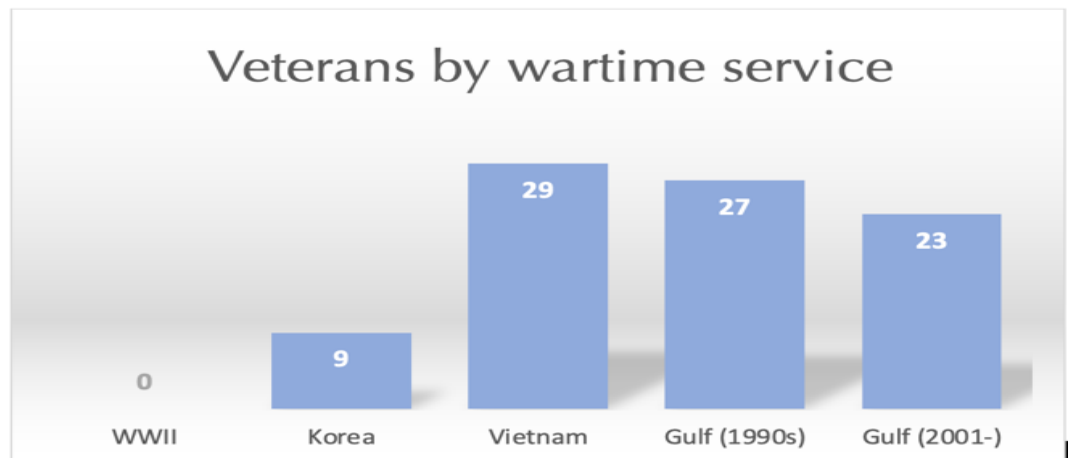
7.9%

Population with  
veteran status

About 90 percent of  
the rate in Chippewa  
County: 8.5%

About 1.3 times the  
rate in Michigan:

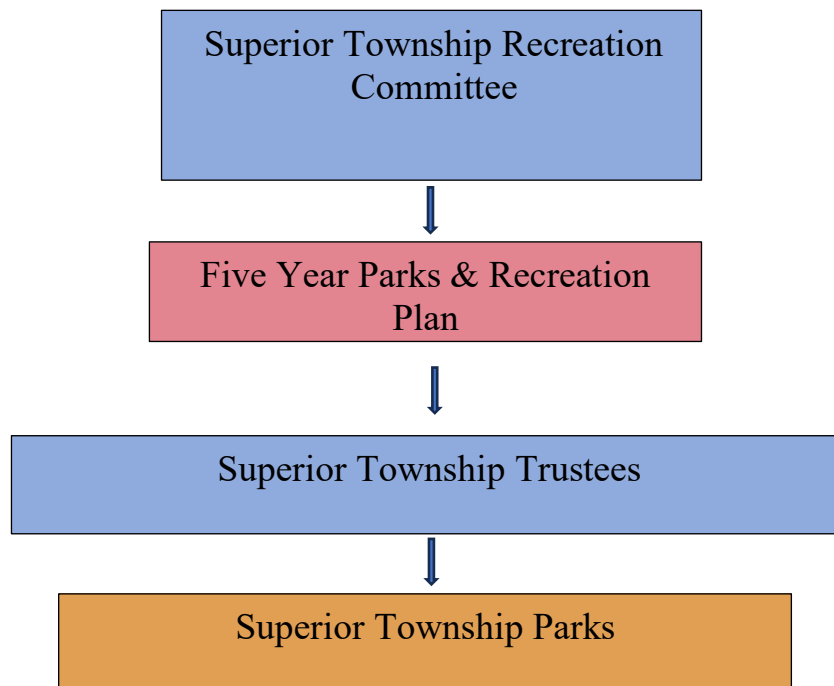
6.1%



# ADMINISTRATIVE STRUCTURE

Superior Township administrative activities are handled by a township board of trustees that consists of five elected members: A Supervisor, Clerk, Treasurer, and two Trustees. Superior Township has no formal Parks and Recreation Department. A Recreation Committee was formed in late 2014 to assist in maintaining and developing recreation opportunities within the Township. The recreation committee is a volunteer committee with members appointed by the Township Board. Superior Township has two (2) seasonal maintenance employees, whose responsibilities include maintenance of the parks.

## Superior Township Organizational Chart



### Superior Township Trustees

Michael Fox, Supervisor  
Jolene Passmore, Clerk  
Amy Eddy, Treasurer  
Jim Sutton, Trustee  
Cindy Vansloten, Trustee

### Recreation Committee

Lori Busha – Township Zoning Administrator  
Jim Busha – Superior Township Water Board Member  
Heidi Murdoch – Township Resident  
Cindy Wilson – Township Resident  
Lee Freedman – Superior Township Board Review

**BUDGET PROPOSAL  
FOR THE BOARD OF  
Superior Township  
2025-2026 BUDGET**

**Date:** Tuesday, March 25, 2025

RESOLVED, that this resolution shall be the general appropriations for the Superior Township General Fund for the fiscal year 2025-26; a resolution to make appropriations ; to provide for the expenditure of the appropriations; and to provide for the disposition of all revenue received by Superior Township.

BE IT FURTHER RESOLVED, that the total revenue and unappropriated fund balance estimated available for appropriations in the **GENERAL FUND** are as follows:

**GENERAL FUND  
REVENUES**

401 current property tax	\$97,000.00
405 payment in lieu	\$0.00
408 gaming component	\$10,000.00
409.1 township share of Fire & Amb	\$14,000.00
415 taxes -admin fee	\$15,000.00
424 taxes -commercial forest	\$100.00
425 taxes-swamp tax	\$7,500.00
506 federal sources	\$11,500.00
574 st shared rev.	\$140,000.00
611 metro author annual	\$3,000.00
617 Misc other	\$2,000.00
635 grave opening and closing	\$1,000.00
641 lot splits	\$200.00
642 cemetery lot sales	\$500.00
648 Verizon Lease Pmts	\$8,000.00
650 rent and royalties	\$1,200.00
655 zoning	\$750.00
665 interest	\$6,850.00
697 Donations	\$0.00
101-000-69 PRIOR YEAR CARRYOVER	\$25,000.00
Total Revenues	\$343,600

BE IT FURTHER RESOLVED, that \$343,600.00. of the total available to appropriate in the **GENERAL FUND** is hereby appropriated in the amounts for the purpose set forth below:

**EXPENDITURES**

101 TOWNSHIP BOARD	\$22,040
171 TOWNSHIP SUPERVISOR	\$14,531
191 ELECTIONS	\$1,200
209 ASSESSORS	\$30,800
215 TOWNSHIP CLERK	\$19,225
247 BOARD OF REVIEW	\$2,330
253 TREASURER	\$21,325
265 BUILDING AND GROUNDS	\$113,445
276 CEMETARY	\$1,450
336 FIRE DEPARTMENT	\$29,510
410 ZONING	\$13,000
446 STREETS & HIGHWAYS	\$13,000
751 PARKS AND REC	\$10,000
101.000.99 CONTINGENCY	\$51,744
Total Appropriated	\$343,600

**Excess Revenue Over(Under) Expenditures \$0**

**Projected Fund Balance April 1,2025 \$173,139**

## Annual and Projected Budgets

### Staff

Because the park does not currently have any recreational facilities to maintain or program, Superior Township does not currently have any maintenance or recreation staff.

Superior Township Community Schools contracts out the maintenance of its facilities including the recreation fields and indoor facilities.

The Superior Township staff includes a 2-person Department of Public Works, whose responsibilities include maintenance of Township Parks.

## Funding Sources

Superior Township's only current recreation expenditures have been annual contributions to the cost of maintenance of Superior Township Park, payment of the electrical bill for the park, and land acquisition... These funds came from the township's general fund. The township's total expenses related to the park from the general fund budget for the 2025– 2026 fiscal year was \$10,000.

The Superior Township Community School District's primary funding source for operations is through the per-student foundation allowance provided by the State of Michigan. Basic maintenance of recreational facilities is handled by the school district. The operational cost of utilizing the buildings come from the general budget. There is not a separate line item in the budget for maintenance of the playfields.

## Role of Volunteers

Volunteers promote recreation throughout the community in a wide range of areas:

Citizens of Chippewa County and Members of the local Lions Club, that are dedicated to improvement of the Superior Township Park and its efforts have included raising funds and build improvements within the Superior Township Park.

Volunteer groups support and participate in activities at the Superior Township Park, including construction projects and attending music in the park events.

## Relationships with other agencies

There are many organizations and agencies that contribute to the overall success of recreation opportunities within Superior Township. These organizations and agencies have provided matching funds and/or volunteers for development projects, technical assistance on projects and grants, etc.

Organizations and Agencies:

- Brimley Area Schools

- Michigan Department of Natural Resources
- United States Forest Service
- E.G.L.E. Environment, Great Lake, Energy
- Michigan Department of Transportation
- Bay Mills Indian Community
- Chippewa, Luce, Mackinac Conservation District
- Eastern U.P. Regional Planning Development
- Michigan Snowmobile Association
- Friends of Pental's Creek

## RECREATION & RESOURCE INVENTORY

The following Recreational Inventory is a comprehensive list of public and private recreation areas and facilities in Superior Township. The inventory will be used as a basis of determining the need for specific recreational facilities in the area. Information was collected and assessments were made on the current facilities that are used by the residents. The following chart is a summary of the local and regional park and recreation facilities available. They have been categorized by jurisdiction, as well as classification based on size and type of facility.

		Acreage (approximate)	Ball Diamonds	Football	Pickle Ball/Ice Rink	History	Picnic Area	Playground Equipment	Playfield (open)	Nature Trails	Waterfront Property	Shelter	Boat Launch	Kayak Launch	Restrooms	Classifications	Comments
	<b>Schools</b>																
1	Brimley Area School	20.2	X	X	X			X	X							SG	
	<b>Local Public Facilities</b>																
2	Superior Township Offices	0.25													X	CP	
3	Superior Township Park	2.7					X		X		X	X	X	X		CP	
4	Veterans Memorial Park	0.66				X					X					CP	
5	Wheels of History Museum	1.15				X	X					X				CP	
	<b>Regional Recreation</b>																
6	Brimley State Park	100					X	X	X	X	X	X	X	X	X	RP	
7	ORV Trails									X						RT	
8	Snowmobile Trail									X						RT	
9	Superior Water Trail									X	X					RT	
10	Round Island Nature Preserve Trail	1,026								X	X					RP	
11	Hiawatha National Park (Eastern)	38,430					X			X	X	X			X	RP	
- Number denotes location on parks and recreation inventory map																	
CP = Community Park; RP = Regional Park; NP = Neighborhood Park; SG = School Grounds; RT = Regional Trail																	

## Status Report of All Grant-Assisted Parks and Recreation Facilities

To date, the Superior Township has received one grant from \_\_\_\_\_. In 2016, 1 grants were awarded from \_\_\_\_\_ as well as a donation in 2025 from a local resident.

Table\_\_

Superior Township Recreation Grant History				
Date	Project No.	Description	\$Amt	Status
Sept. 26, 2016	TF15-0123	Superior Township Acquisition Reimbursement Request	\$99,410.03	Done
June. 2024	NA	Board walk (private donation)	\$5,000	Done
Aug. 2024	NA	Pavilion (Township funded)	\$5000	WIP

Table\_\_ : Parks and Recreation Funding Sources (Fiscal Year 2025 -2026)

Superior Township	\$ 10,000
Park Rentals.	\$ 0
Donations	as Received

Sale of house  
Sale of Steel  
Donations  
Volunteer labor

## Recreational Inventory

Township residents utilize school facilities whenever possible, during school hours and extracurricular activities, the availability of these facilities for public use is limited. For this reason, it appears that there is demand for recreational park land that is owned, developed, and maintained by the Township. The intent would be to develop available space in the community to be used as parks land for various programming in the area.

As noted, most amenities and programming revolve around the Superior Township Community School system. To make up the deficiencies that exist in the area, the community must be proactive in providing these services and recreational activities that are accessible to all the residents.

## Status of Previously Awarded Project TF15-0123

The TF15-0123 Superior Township Acquisition Reimbursement Request was written in the 2016 and funded the purchase of Veterans Memorial Park property . This purchase was completed nearly 9 years ago, so while the park is still in use for public outdoor recreation. The park currently is in need of basic necessities to draw more locals and visitors to the park. By including an under the bridge walkway to join the two parks would gain access to more parking and future restrooms. Upgrades that are being requested and photo documentation will be included.

## Inventory of Existing Recreational Facilities

The following Recreational Inventory is a comprehensive list of public and private recreation areas and facilities in the Superior Township Community (see Map \_\_\_\_). This inventory will be used as a basis to determine the need for specific recreational facilities in the community. Grant history of each park is included. Post Completion Forms for MDNR funded projects are included in the appendix. The summaries also address the accessibility of parks and recreation facilities in compliance with the Americans with Disabilities Act Accessibility Guidelines (ADAAG). In general, all construction since 1991 was required to comply with these guidelines.

ADA compliance ranking each facility ranges from 1-5:

- 1= None of the facilities/park areas meet accessibility guidelines
- 2= Some of the facilities/park areas meet accessibility guidelines
- 3= Most of the facilities/park areas meet accessibility guidelines
- 4= The entire facility/park meets accessibility guidelines
- 5= The entire facility/park was developed /renovated using the principals of universal design

## Superior Township Recreational Facilities

### SCHOOL

#### Brimley Area School



Description	The Brimley Area Schools provides the only K-12 public school system for the entire Township, in addition to Bay Mills, Chippewa, and a part of Dafter Townships. Brimley Area Schools, located on M-221 in Brimley, serves approximately 460 students.
Size	20.2 acres
Facilities	Recreation facilities on school grounds include tennis court/ice rink, children's playground, basketball courts, track, football and baseball fields, which are all available to the public. Indoor gymnasiums are available upon request. Superior Township provides electricity for the tennis court/ice rink
Accessibility	ADA- 5 – (Barrier free parking and concrete walkways close to but not connecting playground equipment)
Previous MDNR Grant Assistance	None



## Local Public Facilities

### Superior Township Office

Description Located in Brimley, it serves all residents of the community.

Size .25 acres

Facilities Bathroom

Accessibility ADA-1

Previous MDNR None

Grant Assistance



## Superior Township Park



### Description

A small park located at the corner of M-221 and W. Lakeshore Drive along the Waishkey River, in the initial stages of development of a new recreational facility. The site has: a barrier-free Universal Access EZ Dock to launch canoes/kayaks, a barrier-free lighted fishing pier & boat dock, a launch for small craft, parking area, boat drop-off area and launch site, picnic tables, pavilion, and trash receptacles.

Proposed improvements will also include toilets, outdoor grills, and playground. In addition, the Township plans to improve parking for vehicles, and add potable drinking water.

Coordinates: 46°24'40.4"N 84°34'21.6"W

Size 2.7 acres

Facilities Waterfront, kayak & boat launch, picnic area, Shelter, open play field

Accessibility ADA-3

Previous MDNR None  
Grant Assistance

## Veterans Memorial Park



Description	The Veterans' Memorial Park & Monument is a public memorial honoring those who have served in the United States Military.
Coordinates:	46°24'39.4"N 84°34'20.2"W
Size	.91 acres
Facilities	History
Accessibility	ADA-1
Previous MDNR Grant Assistance	None



## Wheels of History Museum



**Description** Climb aboard this 1905 wooden railroad passenger car and caboose and learn the history of the Brimley area. See fascinating historical exhibits and artifacts from the railroad, telephones, logging, fishing, Great Lake ships and local family histories . There is also an accessible ¾ Replica Depot with a gift shop and restrooms.

**Size** 1.15 acres

**Facilities** History, picnic area, shelter, family-friendly

**Accessibility** ADA-3

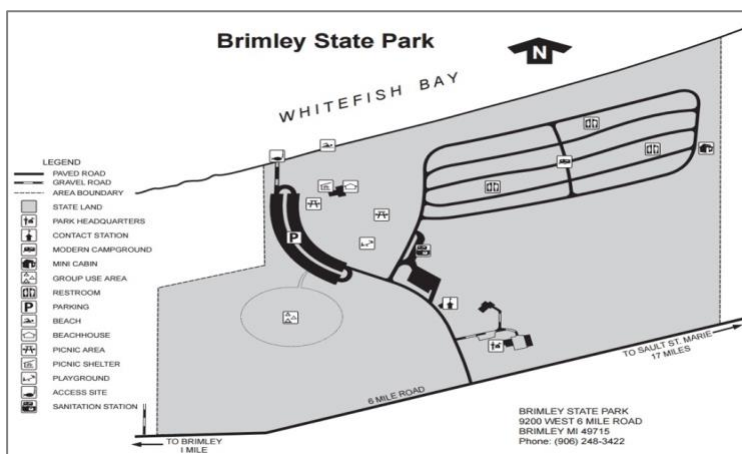
**Previous MDNR** None

**Grant Assistance**



## Regional Recreation

### Brimley State Park



**Description** The Michigan Department of Natural Resources manages Brimley State Park. Brimley State Park, located along the beautiful shore of Lake Superior's Whitefish Bay, is home to 100 acres of lakeside recreation. The park is one of the oldest state parks in the Upper Peninsula and was established in 1923 when the Village of Brimley gifted the park's initial acreage to the DNR.

From the sandy shoreline or observation area, visitors enjoy watching passing freighters and the view of Canada across the lake. The nearby bays and rivers are a destination for fishing, and a number of designated trout streams are located within a 30-minute drive of the park in the Hiawatha National Forest.

**Size** 100 acres

**Facilities** Picnic area, Playground, playfield open, nature trails, water front, boat & kayak launch, beach, bathroom, camping

**Accessibility** ADA-5

**Previous MDNR Grant Assistance** None

## ORV ROUTE C

### Description

Chippewa County consists of more than 65 miles of designated ATV/ORV trails. These trails are a great way to explore the beauty. Of the Upper Peninsula in the “backroads” way. The Sault Ste Marie, Racó, Strongs Route travels through downtown Brimley and Superior Township.

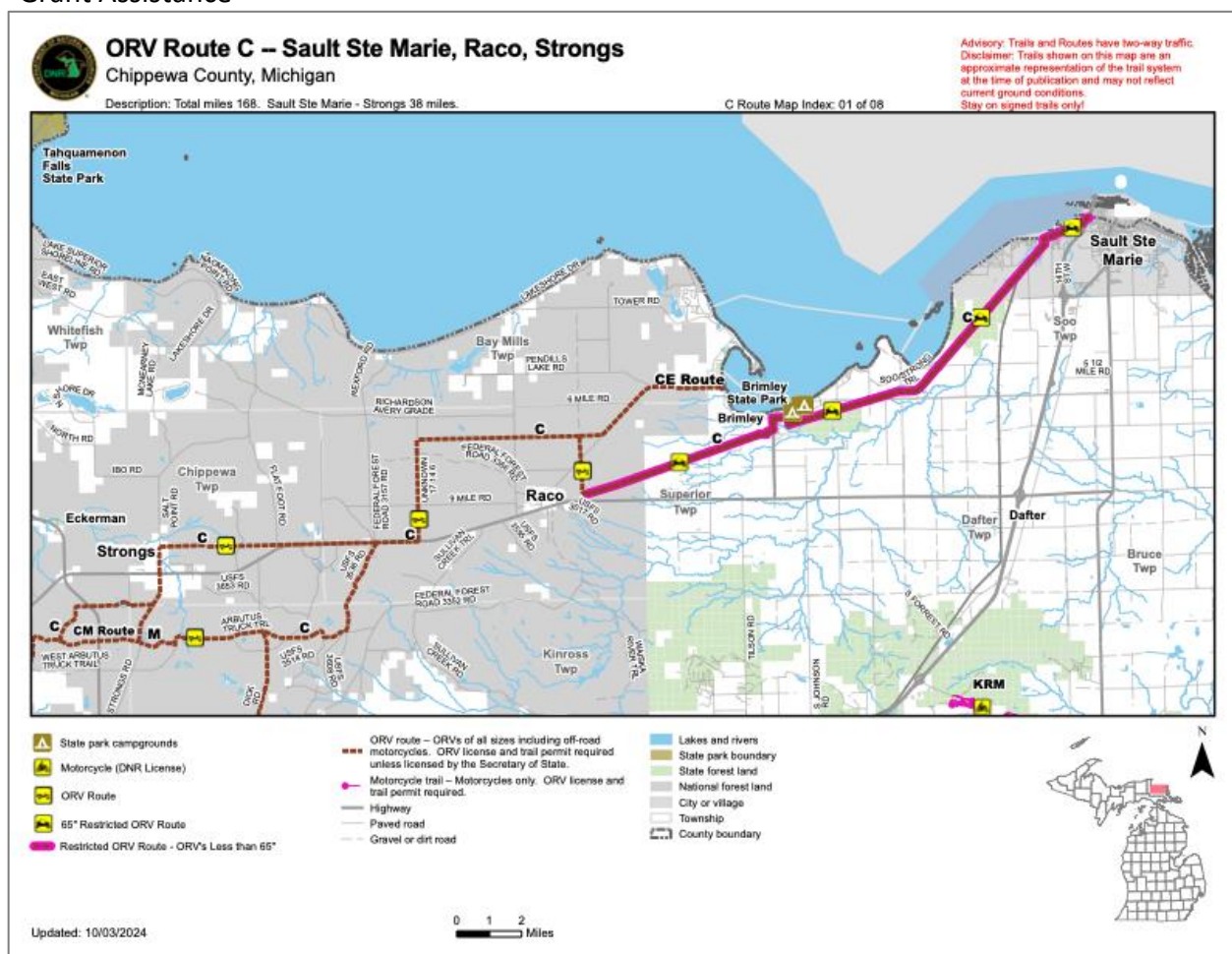
### Size

Facilities ORV trail

Accessibility ADA-1

Previous MDNR None

Grant Assistance





## DNR Snowmobile T

**Description** The Upper Peninsula of Michigan has more than 3,000 miles of groomed snowmobile trails, with about 220 miles of them going through Chippewa County, Michigan.

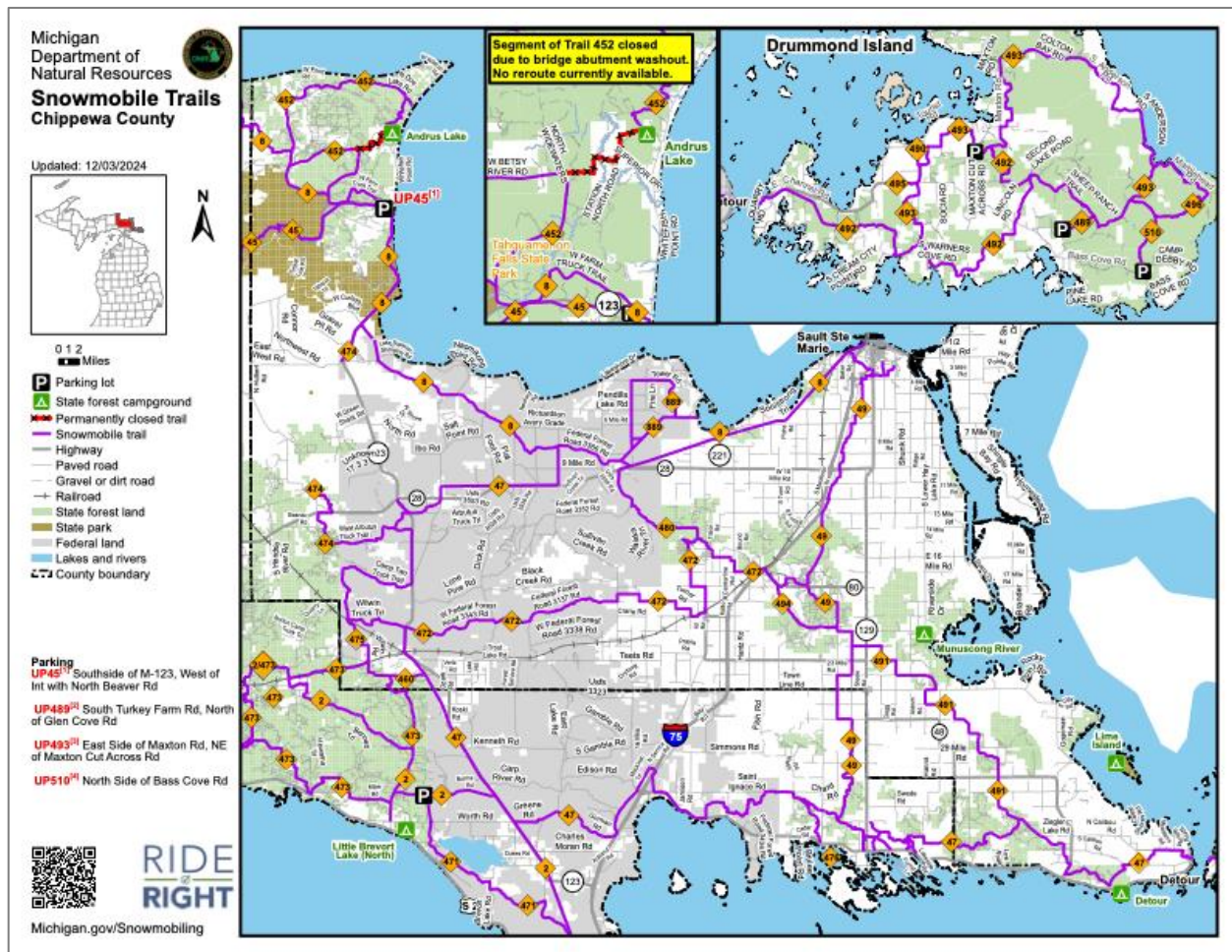
**Size**

**Facilities** Snowmobile trail

**Accessibility** ADA-1

**Previous MDNR** None

**Grant Assistance**



## MDOT Bike Trails

### Description

The Michigan U.S. Bicycle Route System is part of a national network of bicycling routes connecting urban and rural communities via signed roads and trails.

### Size

### Facilities

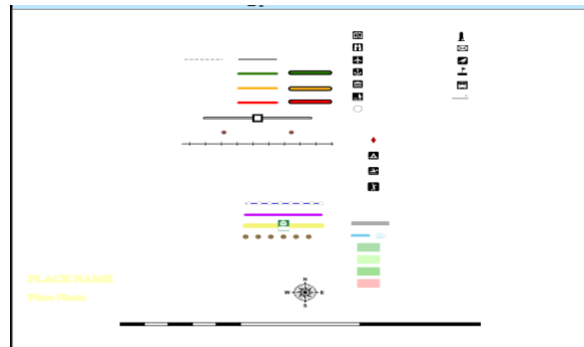
Bike Trail

### Accessibility

ADA-1

### Previous MDNR Grant Assistance

None





## Superior Water Trail

**Description** The Department of Natural Resources Waterway Division is the body directly responsible for managing the Great Lakes shorelines. A water trail is a designated route along a lake, river, canal or bay specifically designed for people using small boats like kayaks, canoes, single sailboats or rowboats. The trails, sometimes called “blueways,” are the aquatic equivalent of a hiking trail (or “greenway”). Water trails feature well-developed access and launch points; are near significant historical, environmental or cultural points of interest; and often include nearby amenities such as restaurants, hotels and campgrounds.

**Size**

**Facilities** Water trail

**Accessibility** ADA-1

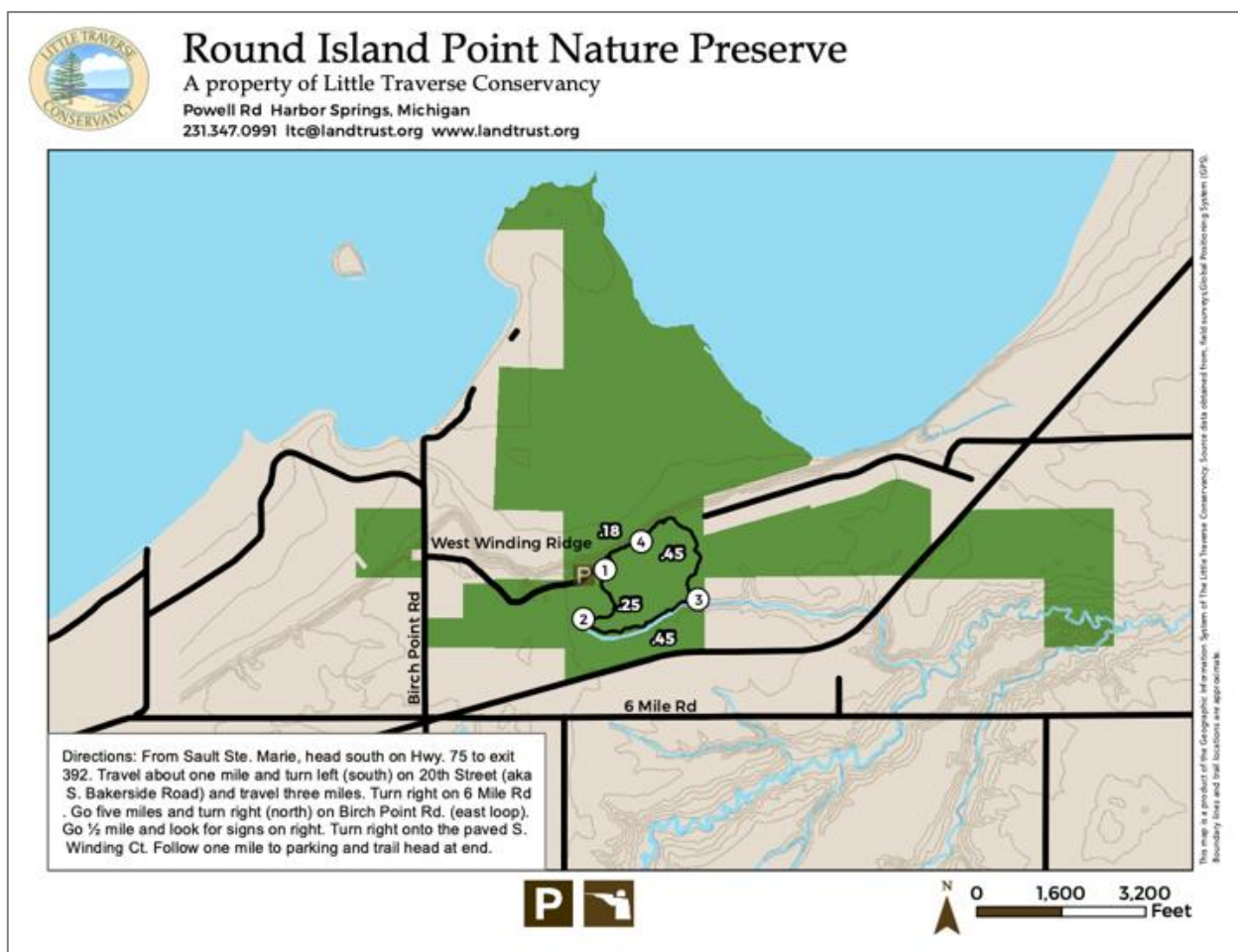
**Previous MDNR** None

**Grant Assistance**



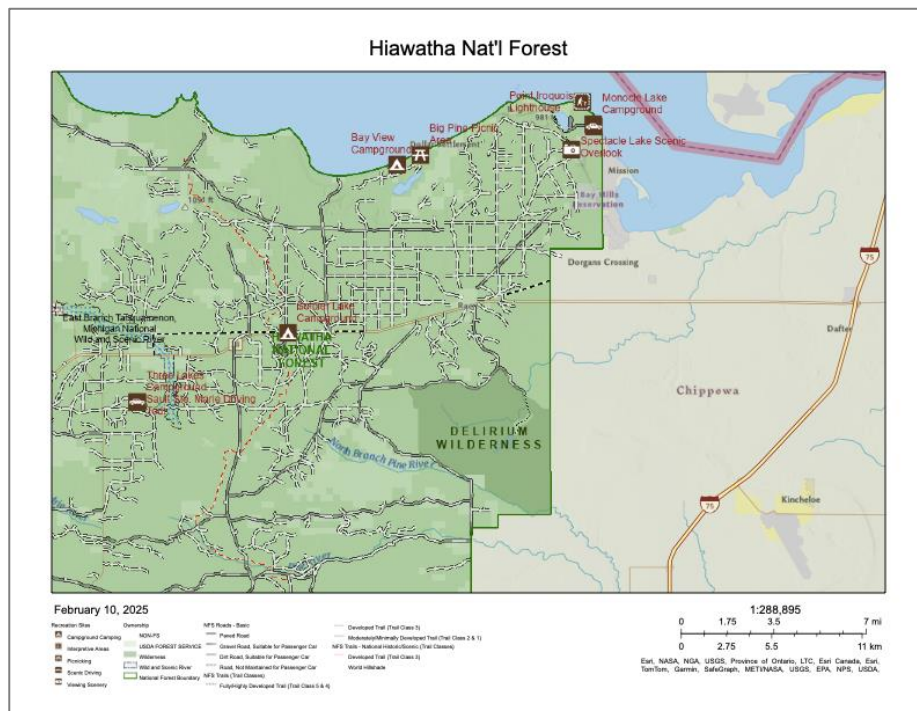
## Round Island Nature Preserve

Description	Round Island Point is a large block of protected habitat near Lake Superior in Brimley, MI. In total, this preserve is 1,026 acres with 9,000 feet along Lake Superior. The trail is great for seeing all sorts of wildlife such as birds. There is a 1½ mile inland groomed trail which includes an outlook with some great views. But feel free to explore off the dedicated trails and explore your way to Lake Superior.
Size	1,026 acres
Facilities	Nature trails
Accessibility	ADA 1
Previous MDNR Grant Assistance	None



## Hiawatha National Forest

Description	<p>The U.S. Forest Service District Office in St. Ignace is responsible for the management, planning and development of approximately 38,430 acres of Hiawatha National Forest within Superior Township. While forest management is the most important function performed, recreational hunting, fishing boating, camping and the like are allowed on National Forest land.</p> <p>Other historic sites in the National Forest in Superior Township include Demond Hill (a.k.a. Raco Fire Tower), Camp Raco (CCC camp), Raco Airfield, and the Ft. Brady Military Reserve, the only U.S.F.S. recreational facility in Superior Township is the Waboose Cross-Country Ski Trail on the west side of Ranger Road.</p>
Size	38,430 acres combined East & West
Facilities	Nature trails
Accessibility	ADA-1
Previous MDNR Grant Assistance	None



## DESCRIPTION OF PLANNING & PUBLIC INPUT PROCESS

## Planning Methods

- 1) Comparison to park Metrics
- 2) System Planning
- 3) Equity-based planning

The Superior Township board recognizes the need to provide its residents and visitors with recreation opportunities. In Oct 2023, a Recreation Committee was formed by the Superior Township Board and was appointed to work on updating the Recreation Plan, among other tasks. That committee consists of members representing various interest. The members of this committee are listed at the beginning of this plan.

In the development of the Recreation Plan update from 2020, several public presentations and questionnaires were provided at local events (provided in Appendix \_\_) to attain public support and interest of recreational development. The current Recreation Committee is reviewing public interests from questionnaires provided.

The public was provided a review and comment period of this plan from \_\_\_\_ to \_\_\_\_\_. A community open house was held on \_\_\_\_ to allow for Township residents to stop in and review the draft plan, maps, and provide comment.

A public hearing was held prior to the Township Board meeting on \_\_\_\_\_.

Notices declaring the above meetings and availability of the draft plan was published in the Sault Evening News on \_\_\_\_\_. Notices were also placed at the Township Hall and Brimley School.

## Public Input

The Superior Township Parks and Recreation Board was formed to oversee park improvements in the Village and Township. The Board is comprised of representatives of the Township, active citizens, and volunteers. In \_\_\_\_, the Board developed, and the Township adopted a Parks and Recreation Plan for the community; this Plan expired in 20\_\_\_. In 20\_\_\_, the Township decided to update the Plan. The planning process began in MONTH 20\_\_\_.

Public input was solicited primarily through Park Board meetings, along with an information board presented at community events, to gather information about potential projects that the community would like to see the Board promote. The meetings were advertised to the community and residents were invited to attend.

After the information from the meetings was reviewed by the Parks and Recreation Board, the goals and objectives and action plan were developed based on what were high priority items to address in the parks and programming. The goals and objectives were drafted and were presented to the Park and Recreation Board and comments were held to define other potential amenities to the parks program. The Draft Plan was then ready to begin the 30-day review process. The dates for the 30-day review were MONTH DAY, YEAR-MONTH DAY YEAR, and the Plan was available at the Superior Township Offices.

After the 30-day review in the community, the public from the Superior Township community was invited to participate in the public hearing for the draft on MONTH DAY YEAR. After the public hearing, any comments were reviewed and anything that needed to be adjusted in the Plan was reviewed. After this review, the Plan was forwarded to the Township Board for review. The Township reviewed and adopted the Plan on MONTH DAY YEAR. Copies of the public hearing and recommendations for adoption from both municipalities are included in the Recreation Plan.

The final copy of the Plan was uploaded to the MDNR with a transmittal letter noting that copies had been send to the local and regional planning agency for acceptance.

# SUPERIOR TOWNSHIP PARK PLANNING

The Superior Township Board, in conjunction with the Bay Mills – Brimley Historical Society is developing a 5-year Recreational Plan for the township. Part of the plan includes what the public feels is needed in the way of facilities in the township.

As a member of our community, your input is important for us to determine our community needs and wants for future park improvements. Please take a moment to fill out the questions below.

If members of your household seldom or do not use Superior Township park facilities, what are the reasons? (Please check all that apply.)

- ☐ No restrooms
- ☐ Limited parking availability
- ☐ No dog parks
- ☐ No play structure
- ☐ Other, please explain: \_\_\_\_\_

From the list below, please list the most important park improvements needed to serve Superior Township: (1 being the highest priority, 6 being the lowest priority):

- ☐ Provide cognitive skills (sensory/musical play) area for all ages
- ☐ Install play structure
- ☐ Install horse shoe pits
- ☐ Develop a path with fitness equipment
- ☐ Create dog off-leash area
- ☐ Other, please describe: \_\_\_\_\_

How can we make Superior Township Park more enjoyable for you? (1 being the highest priority, 6 being the lowest priority):

- ☐ Provide more seating and viewing areas
- ☐ Expand and develop the Superior Township board walk to include Memorial Park
- ☐ Provide interpretive and exercise trails, for education and fitness
- ☐ More support facilities (restrooms, drinking fountains, grills, etc.)
- ☐ Other, please describe: \_\_\_\_\_

Thank you for your time and input

# GOALS & OBJECTIVES

An overall guide for the Superior Township recreation goals, will be to focus efforts on developing additional recreational programming and defining key opportunities for park improvements. The information for the goals and objectives was also collected survey data from residents and visitors to our park and also from the data collected from the comprehensive plan developed for the Superior Township Master plan. Of the goals and objectives listed, the top priorities ranked in order include:

- Construct new facilities where necessary to provide additional amenities for residents.
- Upgrade and renovate existing park properties to meet the current needs and requirements for ADA-accessibility.
- Expanding program opportunities for park facilities in the service area.

The overall theme for improving recreation will be to develop and maintain recreational programming that will support the growing needs of Superior Township.

The following goals support this (not listed in any order of priority):

## **Goal 1**

Develop recreational sites and opportunities for residents and tourists, and provide connections for Lake Superior Water Trails<sup>1</sup>.

- Initiate the development of the recreational waterfront Superior Township Park located at the corner of M-221 and W. Lakeshore Drive along the Waiska River. Site amenities will include a barrier-free Universal Access EZ Dock to launch canoes/kayaks, a barrier-free lighted board walk, a vehicle turnaround for the launch site of small craft, and potable drinking water. The site will also include restrooms, picnic area, pavilion, outdoor grills, agility course, trash cans, and informational kiosks.
- Superior Township Veteran's Park property is located on M-221 the South East corner of 6 mile intersection. This site has a monument honoring all local veterans who served their Country, with plans to add a boardwalk along the waterfront in this park.

## **Goal 2**

Improve upon current recreation facilities for greater use by residents and tourists.

- Provide signage, kiosks, and interpretive signs for parks, trails and historic sites.
- Provide guides: maps of water and hiking, biking trails, public restrooms, historic sites, museums, schools, businesses, festivals, geo-caching sites, and other events and sites.

- Work with the USFS Hiawatha National Forest to improve access to historic sites within the Township that are located under USFS authority. Sites include Demond Hill Fire Tower, Raco Work Center District Headquarters, CCC Camp in Raco (used later as German POW Camp), Raco Air Field, Fort Brady Reserve Site, and the Ghost Town of Wellsburg (once a RR stop and had its own post office and school).
- Encourage entrepreneurs to establish a canoe/kayak livery business using the Waika River and Bay area, and encourage training for coastal water fishing guides, kayak/canoe guides/lessons, and safe boating practices.
- Partner with the Brimley Area Schools for greater public use of their indoor and outdoor recreational facilities.

### **Goal 3**

Provide a variety of activities and recreational opportunities for residents of every age group, including youth, families, and senior citizens.

Develop an area within the park to make it a multi-function recreational area for multi ages, size skills and abilities for residents to safely choose from.

- Provide: Picnic area- Water access- Entertainment- Physical activities – Pickleball courts-- Horse-shoe Pits—Corn-Hole area—etc.
- Apply for grants – to achieve goals

### **Goal 4**

**Promote community ownership in the provision of recreational services and provide a transparent and accessible process through which individuals can offer feedback for continuous improvement.**

- Provide ongoing opportunities for public input on recreation issues through the Township, and Facebook websites.
- Identify opportunities for citizen involvement in recreation, recruit volunteers to undertake those tasks, and provide a method of public acknowledgment for their contributions.
- Increase public awareness of the local community parks.
- Promote and maintain existing partnerships that exist in the community that aid in recreational programming and opportunities (i.e. Lions Club, Brimley School club volunteers, Soo Coop Credit Union Volunteers, etc.).

<sup>1</sup> Water trails are recreational routes on waterways with a network of public access points supported by broad-based community partnerships. Water trails provide both conservation and recreational opportunities (NPS, MIDNR).



## **Goal 5**

**Expand recreational activities with an emphasis on drawing visitors from the Eastern Upper Peninsula region and throughout the State into the Community Park.**

- Install bike racks and facilities for bike commuters.
- Install a fire pit warming area for winter sports and snowmobilers.
- Install kayak racks and facilities for water trail users.
- Install a dog park for residents and visitors to enjoy and meet to socialize.

## **Goal 6**

**Continuously analyze opportunities to encourage physical recreation throughout the park including the incorporating an interpretive walking trail.**

- Identify potential non-sidewalk pathways that could connect the Community Park to the surrounding community.
- Creating a connector path under the bridge to join the two parks
- The clearing of property for a walking path through the wooded area of the park. This path will connect to other pathways and areas of the park.
- Incorporating nature trail signs, to enhance the visitor's experience and understanding of the natural or cultural environment. These signs provide educational information and promote a deeper appreciation for the area's history, environment, or culture.
- Develop a natural play area that delivers a creative and imaginative playground that even adults will want to play, while also increasing biodiversity and making the project more eco-friendly.
- Expand walking area and boardwalk to connect to the ADA accessible kayak launch.

## **Goal 7**

**Park entertainment and rentals will be available. The development of park facilities must be updated to enhance further use. Local professional volunteers and grants should be applied for.**

- Develop picnic area with pavilion and charcoal grills
- Incorporate a bandstand along the boardwalk
- Install bathrooms

## **Goal 8**

**Expansion of parking lot is necessary to create enough parking for the expanded park capabilities and the diversity of vehicles that will need to be accommodated.**

- Demolition of existing building and shed
- Expansion of parking to accommodate: handicapped parking, boat trailers and local Amish horse drawn buggies with hitching posts for the horses.
- Driveway to the boat launch to include erosion control, to mitigate the sand/soil buildup into the lake.

## **Goal 9**

**MDOT LANDSCAPING AND CONNECTOR TRAIL** this trail will reduce bike and pedestrian traffic at a busy intersection of M-221 and Lakeshore Drive/6-Mile Road, which provides a safer way to cross the busy street. It also provides a connection between two of the Townships parks, the Memorial Park and the Superior Township Park.

- Develop walking path connecting Superior Township Park to Veterans Park and community of Brimley which will go under the existing bridge on Lakeshore Drive/6-Mile Road.
- Landscaping the park side slope creates a more appealing look and erosion control on a steep slope of land.

# **ACTION PROGRAM**

## **Basis for Action Plan**

The basis for this action plan is the Parks and Recreation Committee's review of its goals and objectives, along with the previous Plan's action plan, improvements undertaken since 2015, and improvements proposed by recreation providers and the public.

## **Action Plan**

The action program for this Five Year Plan will be dictated by the monies available through grants, taxes, and PILT (payment in lieu of taxes) funds. These projects can be realized through the cooperation, assistance and expertise of County, State and Federal governments.

The following is a list of recommended parks and recreation improvements for the Superior Township Community, along with justifications for each.

Note that while specific items have been identified by the Committee as preferred improvements. It is possible that some of the improvements for development may not be available for the Township. The Plan is to be considered flexible in terms of fund availability and priorities.

## **ACTION PROGRAM**

### **1. Improve Park**

The Superior Township Park is the easiest kayak launching area for the Waiska River in the area and *is a significant natural feature of the park. It has significant potential as an educational and interpretive recreational facility. There is an established boardwalk north of the bridge and a proposed expansion to continue with boardwalk or dirt footpath south of the bridge along the west side of the river; however, the area is overgrown with trees and shrubs. This area slopes upward from the river to the west. If the area were to be cleaned up, it could be an attractive nature trail and would improve accessibility to the Waiska River.*

*Actions towards improving the park includes:*

- *Clean brush and weeds from river banks and obstructions, cut dead trees, and plant new trees where necessary.*
- *Improve site amenities around the park to include new BBQ grills, benches, and musical equipment.*
- *Installation of an agility coarse playground area for all ages.*
- *Develop restroom facilities and expanding parking area*
- *ADA accessibility to all park amenities (boardwalk, picnic tables, restrooms, playground area, horse-shoe pits, and corn-hole area ).*

### **2. Recreational Trail Connections**

An expanded, pathway system that could be used year-round and improve accessibility to the Waiska River. The facility could be used by residents of all ages and interests, and be suitable for: walking, running, snowshoeing and dog on leash.

Also, the Parks and Recreation Committee would like to:

- Provide a walking path along the west side of the Waiska River to Veterans Memorial park, which would then connect through the existing sidewalk to the Wheels of History Museum and downtown Brimley.
- Provide water trail access by expanding the existing boardwalk to include the ADA Kayak launch.
- Expand options for other trail connections throughout the community to other locations.
- Identify a “champion” within the schools to pursue a Safe Routes to School (SRTS) grant.

By incorporating the above renovations and expanding the trail network through the community, the Township will meet or exceed the recreational inventory standards.

#### ***4. Expanding Current Programming, Promotions and Partnerships***

Presently, Superior Township has developed a great relationship—with various community partners and volunteer organizations. As the new Plan is implemented, it would be best to continue to support the current programming and allow for innovative programs and recreational amenities. The community is made aware of park & community events through the technology of the Superior Township Park Facebook pages, Superior Township websites, and local newspaper articles.

With programming, it also becomes important that the Parks and Recreation Committee and school district do not duplicate services and where the need to collaborate for programs exist that the Township Board and School District are actively engaged in doing so. Also, to stay current with the residents in what the desires of the community are towards certain recreational amenities and programs.

#### ***5. Safety and Security***

The Parks and Recreation Board should ensure that the amenities and recreational structures are safe and reliable. By adding a safety surface, we provide surfaces that allow for easy transitional access between the pavement to the playground equipment. Other elements that would need to be addressed would be providing access to the pavilion. The installation of a bike rack would contribute to deterring theft while people enjoy the park amenities. A dog park helps contribute to the safety of the community, by allowing a dog to roam unleashed in a specified area and not allowed to roam unleashed in the other areas creates a safer environment for the people enjoying the park.

Also, the community members around the park play a significant role in providing a safe environment. Residents can assist in park monitoring and informing the Parks and Recreation Board when playground equipment or park amenities need repair or have been damaged. Also, all playground equipment that is installed should be vandal-resistant. Additional deterrents such as a camera would help police activity in the park in the off-hours.

#### ***6. Facilities***

Along with demolition of house located at South West corner of park and improvements to the existing park, the Committee also intends on additional facilities for parks and recreational programming. Currently, visitors would have to leave the Superior Township Park to use a restroom. As the park program expands, it would be necessary to review potential opportunities to construct other facilities that would promote recreational activities in the community. Some of those facilities include:

- Construction of a restroom, would provide athletic and programming opportunities for all ages. The facility also could be a revenue stream for the community through pavilion rentals for various programs.
- The development of an amphitheater would help promote outdoor and social activities in the park; a portion of the park is located on a hill which can be used for natural seating. Additional consideration and locations for ADA-accessibility would be ideal.

## **7. Funding**

Various grant opportunities and programs exist that are useful in leveraging funding for projects and property acquisition. A summary of funding resources in the State of Michigan include:

- **Michigan Natural Resource Trust Fund (MNRTF)** – Provides funding assistance for the purchase of land (or interest in land) for recreation or protection of land because of its environmental importance or scenic beauty, and the development of recreation facilities. This assistance is directed at creating and improving outdoor recreational opportunities and providing protection to valuable natural resources. The improvement grants are between \$15,000 and \$500,000 with a required minimum local match of 25 percent. Acquisition grants vary depending upon the value of property and local match amount; therefore, there is not a minimum or maximum amount. This grant is ideal for implementing Community Park Plans and for land acquisition in the future. Applications are due in April and September of each year for acquisition projects and April of each year for development projects.
- **Special Millage** – A property tax millage can be used to finance specific park and recreation projects such as park land improvements and facility upgrades. A millage is an effective method to divide costs over time amongst all the taxpayers in the community to provide matching grant funds or finance projects out-right. A millage allows more flexibility in how the money is utilized than a bond.
- **Community Forestry Grants** – To provide information and technical assistance to municipal governments, schools, nonprofit organizations, and volunteer groups for urban and community forest activities such as tree inventories, management plans, planting and other maintenance activities. Criteria: Projects that develop or enhance urban and community forestry resources in Michigan. Project categories are: Management and Planning, Education and Training, Library Resources and Tree Planting. Applications are announced each summer (June-July), submitted to the Forest Resources Division and then reviewed by Division staff. Applications are approved, adjusted, or denied. Applicants are notified, and agreements signed. Grant requests may be up to \$20,000, depending on the project type. Contact Forest Resources Division/Kevin Sayers (517-284-5898) [sayersk@michigan.gov](mailto:sayersk@michigan.gov).
- **Land and Water Conservation Fund (LWCF)** – LWCF provides funding assistance for communities to acquire and develop land for outdoor recreation. The minimum award is \$15,000 and the maximum of \$500,000 with a 50 percent local match. The eligibility criterion emphasizes preservation of natural resources such as waterways. This grant is

ideal for implementing Community Park Plans for land acquisition in the future. DEADLINES, Applications must be submitted in MiGrants no later than April 1 each year. To be eligible to apply for a recreation grant, the 5-year recreation plan must be submitted on or before February 1 of the application year.

- **Transportation Alternatives Program (TAP)** – TAP is a competitive grant program that funds projects such as non-motorized paths, streetscapes, and historic preservation of transportation facilities that enhance Michigan’s intermodal transportation system and provide safe alternative transportation options. These investments support place-based economic development by offering transportation choices, promoting walkability and improving the quality of life. The program uses federal transportation funds designed by Congress for these types of activities. TAP grant funding requires matching funds of at least 20 percent of the eligible project cost.
- **DNR partnership Match Program** The purpose of this partnership is to leverage gifts made by organizations associated with Parks and Rec (PRD) in order to fund improvement projects on Parks and Rec Division administered lands. Projects must be construction-based development projects including materials and/or services. The total value of State materials and/or services may be no more than 50% or of the estimated total project value. Applications must be submitted to the Parks and Recreation Division (PRD) by January.
- **Public-Private or Public-Public Partnerships** – Reduced funding at the public and private sector has created a need for various partnerships between public and private entities as well as between two or more public entities, to accommodate specialized large-scale recreation demands. Crowd funding on-line has been a growing source to reach individuals as well. Several examples are provided below:
  - [playground grant](#)
  - [grantmanshipcenter](#)
  - [Pendals Creek Fisheries](#)
  - Lions Club
  - <http://www.crowdfundingmi.com>
- **The Michigan Municipal League** has launched a website, [www.crowdfundingmi.com](http://www.crowdfundingmi.com), which will provide extensive background information, how to get started, as well as highlight successful funding projects and serve as a clearing house for Michigan Investment crowdfunding projects as they develop. The website will also act as a portal to “Fundrise” and Local stake, two existing leading crowdfunding platforms. Although they both serve as web portals for crowdfunding investment, “Fundrise” lets you invest directly in local real estate. It will connect investors directly to individual properties online. Local stake helps connect businesses looking for capital with local investors.
- **Community Development Block Grant (CDBG)** Program Community Development Initiatives; contact Ryan Kilpatrick, [rkilpatrickr@michigan.gov](mailto:rkilpatrickr@michigan.gov)
- **Community Foundation of Chippewa County-** Community Impact Micro-Grants - Our Bud Mansfield Community Impact Grant cycle is a micro-grant program designed to help non-

profits, community groups, youth teams and organizations get the infusion they need to help begin a project, fill a pantry, meet a need and so much more. Community groups and local non-profit organizations (including churches, schools, government agencies, and community groups with a 501(C)(3) non-profit status) may apply for grants for programs that benefit individuals in Chippewa County.

**Grants up to \$500 will be considered.** Grant applications must be submitted either through e-mail – [Officemanager@chippewacountycf.org](mailto:Officemanager@chippewacountycf.org) or mailed/dropped off at the CCCF's office by June 1st, at 4:00 p.m. Chippewa County Community Foundation Office: 511 Ashmun St., Suite 202 Mail: PO Box 1979 Sault Sainte Marie, MI 49783 If you have any questions, please e-mail: [officemanager@chippewacountycf.org](mailto:officemanager@chippewacountycf.org) or call: (906) 635-1046.

- **Fund Raising Events** To raise funds for the parks, are also considered. organizing events like, bake sales, or car washes, or explore crowdfunding and direct donations. local business sponsorships and fundraising auctions.
- **CONSERVATION GRANT PROGRAM - 2025** The Chippewa Luce Mackinac Conservation District (CLMCD) has a Conservation Grants Program available to the public for conservation related projects to be implemented in Chippewa, Luce, or Mackinac County. CLMCD is anticipating awarding up to \$15,000 to 6 - 10 projects across Chippewa Luce and Mackinac Counties. Grants will range between \$1,000 - \$2,000 each. CLMCD seeks proposals for a variety of projects that have a direct impact to the improvement of our natural resources through hands on educational programs or projects that directly impact the environment. *Competitive grant applications for Community Needs Grants open on August 25 - October 2, 2025.*

## SUPPORTING DOCUMENTATION

- Post -Completion Self -Certification Reports

- Early Input Before the draft plan is written

- Notice of Public Hearing

- Minutes from the Public Hearing

- Minutes from the Meeting to Pass a Resolution of Adoption

- Transmittal Letters to the County and Regional Planning Agencies

### Plan Amendments

- Amended Plan Content

- Supporting Documentation

### Maps

- Superior Township Park Concept Plan

- Superior Township Base Map

- Superior Township Land Ownership Map

- Superior Township Elevation/Steep Slope

- Superior Township Population Change



Representation of Current (2025) to Future Superior Township Park Concept Plan





Parking Lot Areas



Gazebo



Dog Park



Corn Hole /  
Horseshoe Pits



Sensory & Obstacle  
Course Play Area



Park Grills / Picnic  
Areas



Pavilion (Erected 2024)



Public Restrooms



Boardwalk (Erected 2024)



Removal of existing structures



Walking Trail /  
Interpretive Trail /  
Exercise Trail



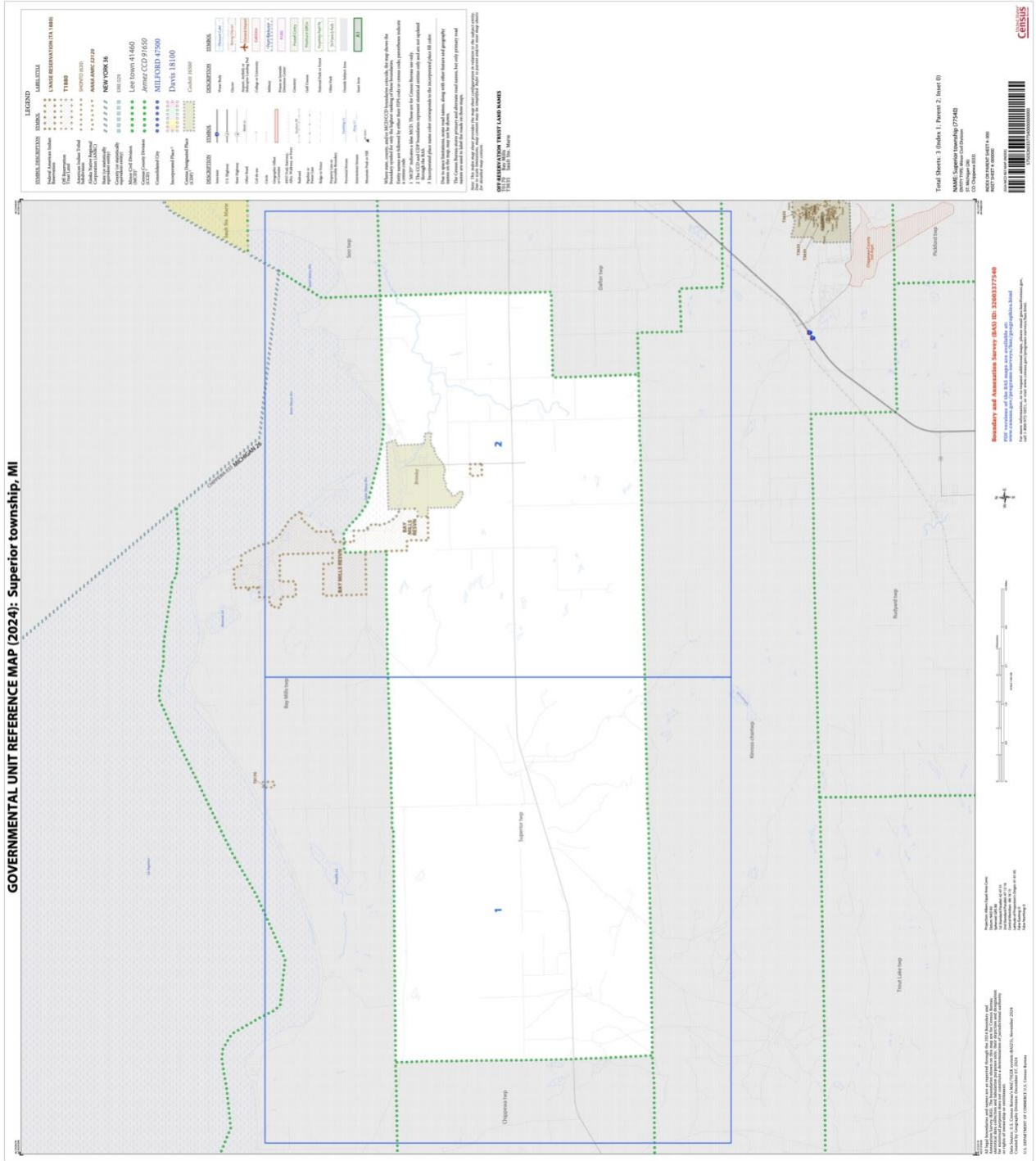
Kayak Launch -  
needs installation



DELETE this Page or REMAKE with information from previous pages



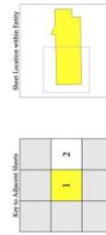
GOVERNMENTAL UNIT REFERENCE MAP (2024): Superior township, MI



GOVERNMENTAL UNIT REFERENCE MAP (2024): Superior township, MI

The map shows the geographical layout of Superior Township, Michigan. Key features include:

- Boundaries:** A green dashed line delineates the township's limits.
- Roads:** Major roads are shown as solid lines, while minor roads are indicated by dashed lines.
- Water Bodies:** Various lakes and rivers are depicted in blue, including Lake Superior to the north and several smaller lakes within the township.
- Topography:** Contour lines and shaded areas represent the terrain and elevation.
- Labels:** Place names and geographical features are labeled throughout the map.

[illegible]OFF-RESERVATION TRUST LAND NAMES  
700.79 100 Miles

Sheet 1 of 2 PARENT sheets  
Total Sheets: 3 (Index 1; Parent 2; Inset 0)

NAME: Superior township (77540)

Beverly Hills: Mirror Craft Division  
 2140 Wilshire Blvd.  
 Beverly Hills, CA 90212

INDEX OR PARENT SHEET # 001

© 2004 Blackwell Publishing Ltd  
Journal of Internal Medicine 255: 103–110



572034623377400010000000  
  
 Oxford Student  
**Census**  
 The 2011 Census

Boundary and Annexation Survey (BAS) ID: 32603377540

PDF versions of the SAS maps are available at:  
[www.census.gov/programs-surveys/5as/geographies.html](http://www.census.gov/programs-surveys/5as/geographies.html)

For more information, or to request additional maps, please email [geo.sas@hhs.gov](mailto:geo.sas@hhs.gov), call 1-800-577-5811, or visit [www.census.gov/programs-surveys/5as.html](http://www.census.gov/programs-surveys/5as.html).

Rejection: Others (paid help/lost  
 income, 1942-83)

1st Standard Period: 42.47 (3)

Volume of Population's Output as a % of  
Total Output  
Value Added  
Value Added

All legal boundaries and names are as reported through the 2014 Boundary and Address Survey (BAS). The boundaries shown on this map are for Census Bureau purposes only. Individual addresses are not shown.

examining their citizenship and naturalization papers since, until August 1996, citizenship was not required for naturalization. The purpose of this study is to determine the effect of the 1996 law on the naturalization process and to determine the effect of the 1996 law on the naturalization process.

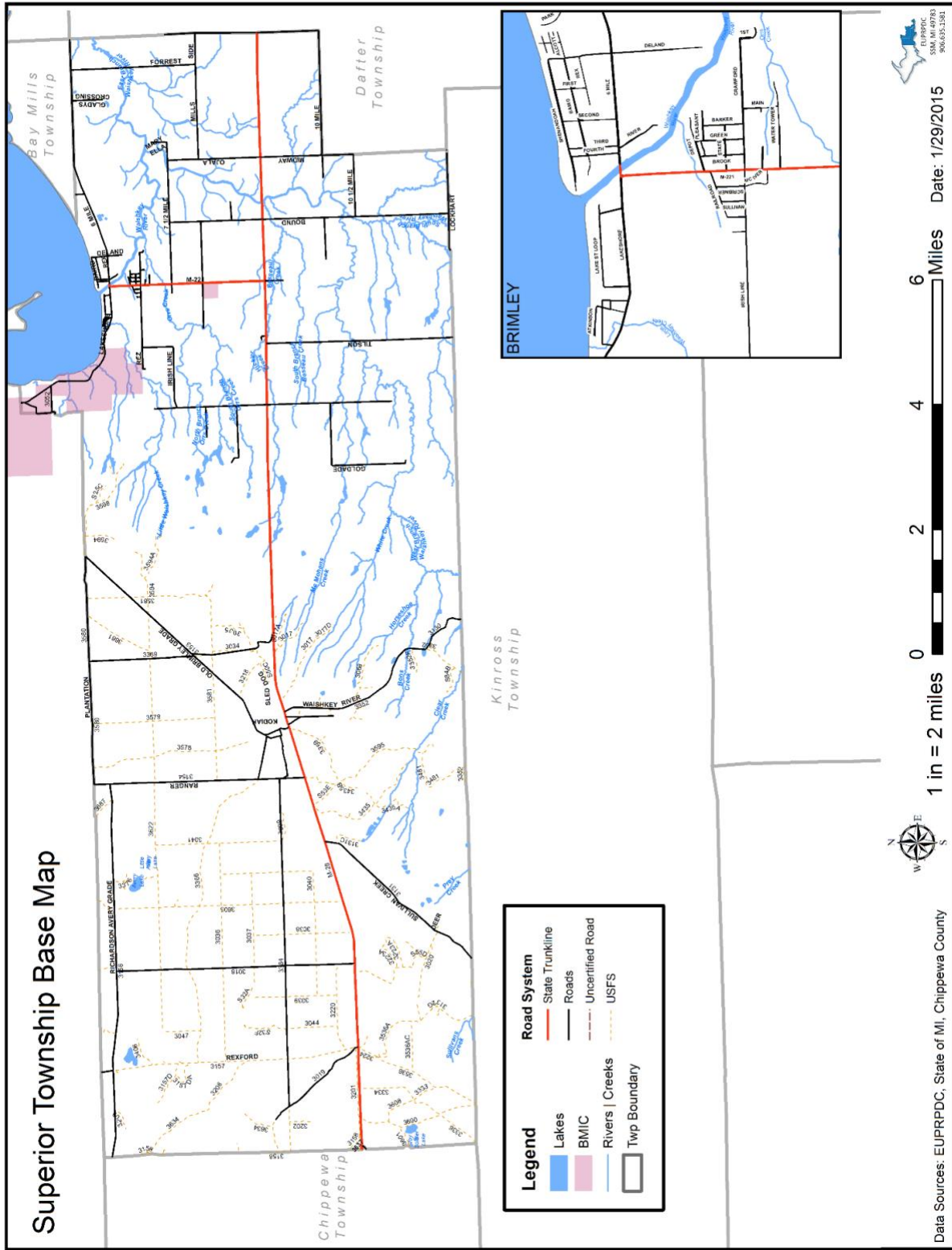
U.S. DEPARTMENT OF COMMERCE U.S. Census Bureau  
Data Source: U.S. Census Bureau's WQ/IT/2k8 system (B2121), November 2014  
Created by Geography Division, December 07, 2014

U.S. DEPARTMENT OF COMMERCE U.S. Census Bureau

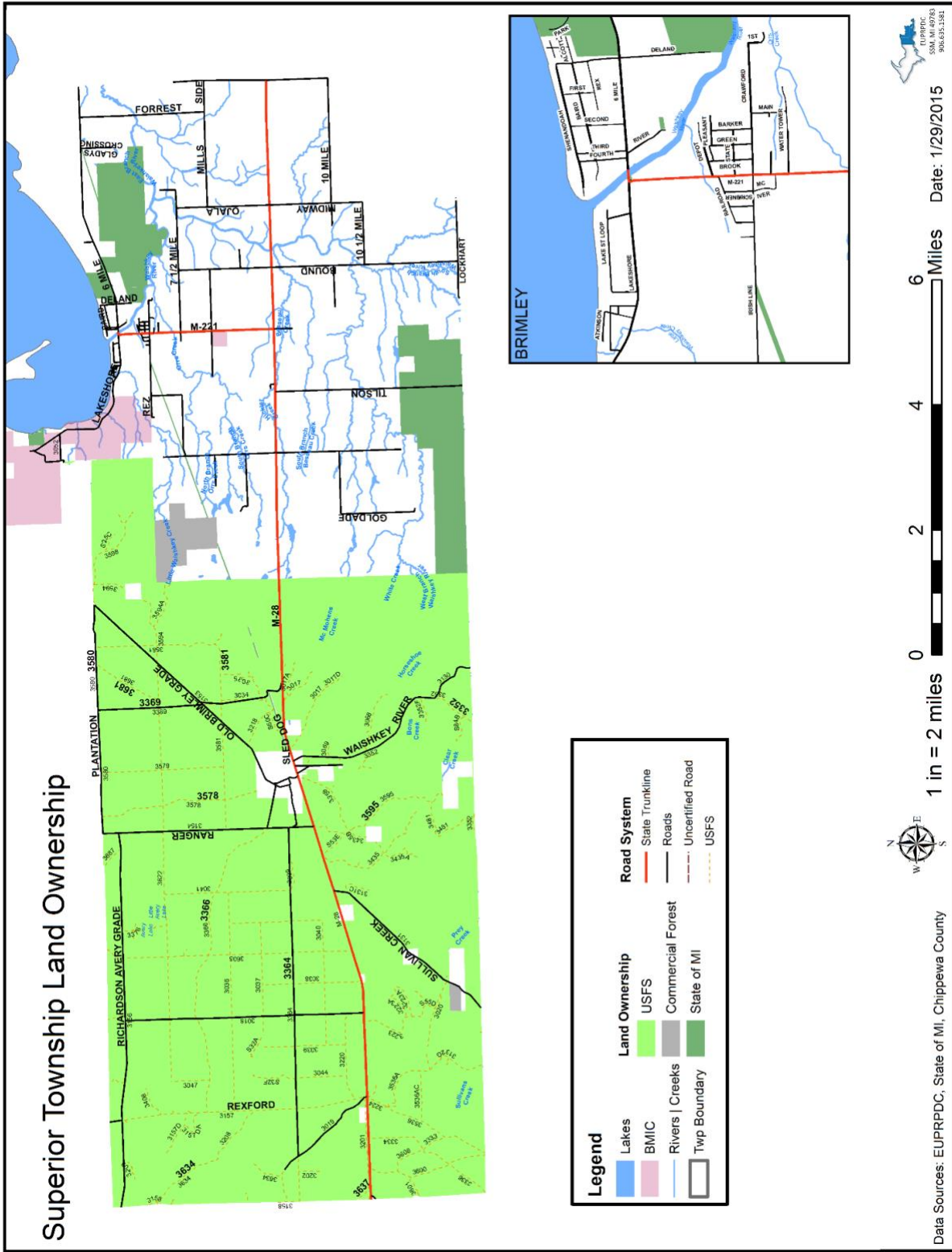


[illegible]

# Superior Township Base Map

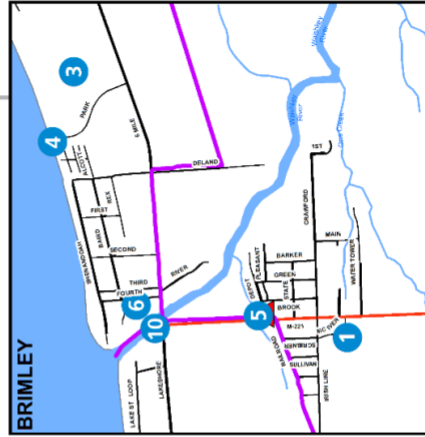
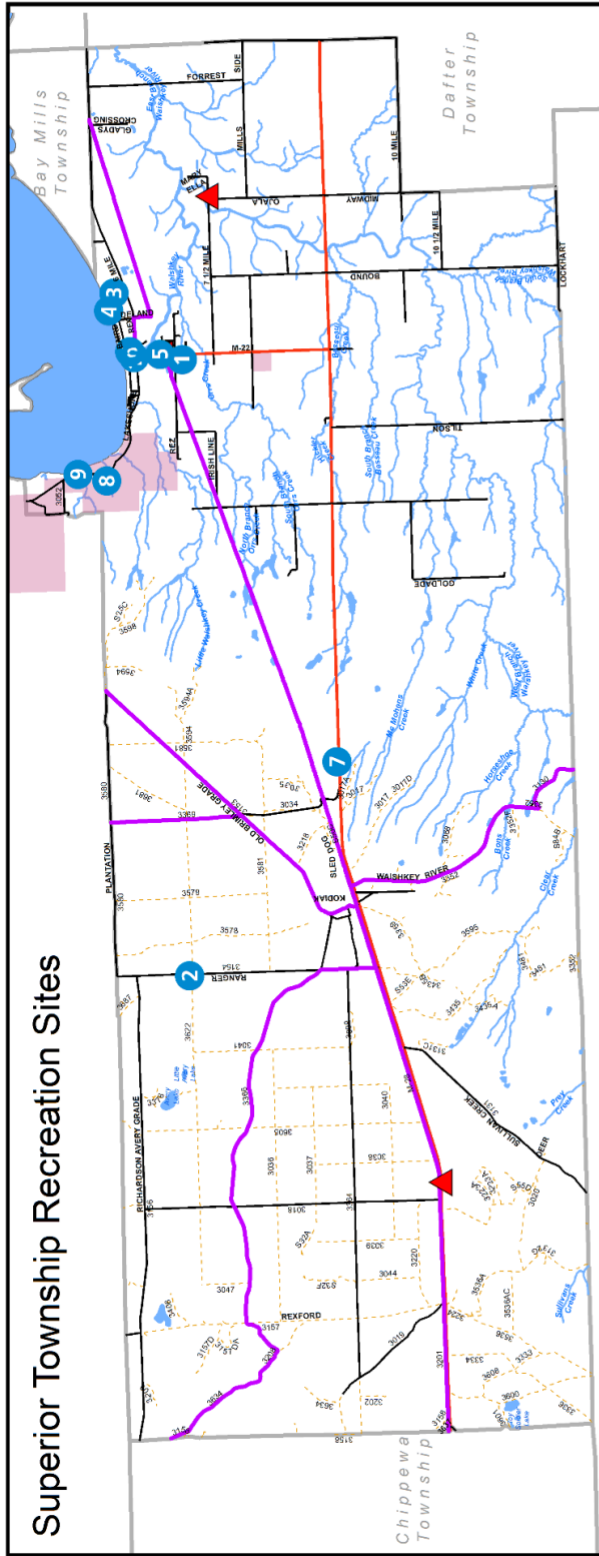


# Superior Township Land Ownership

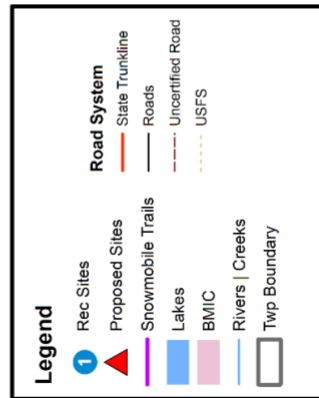




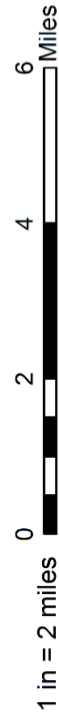
# Superior Township Recreation Sites



Name	ID #
Brimley Area Schools	1
Waboose Cross Country Ski Trail	2
Brimley State Park Campground	3
Brimley State Park Boat Access	4
Superior Township Mini-Park	5
Bayview Cemetery	6
Hillcrest Cemetery	7
Wild Bluff Golf Course	8
Bay Mills Casino Complex	9
Waishkey River Park Area	10



Data Sources: EUPRPDC, State of MI, Chippewa County



Date: 1/29/2015



[illegible]



# Superior Township Land Cover/Use

