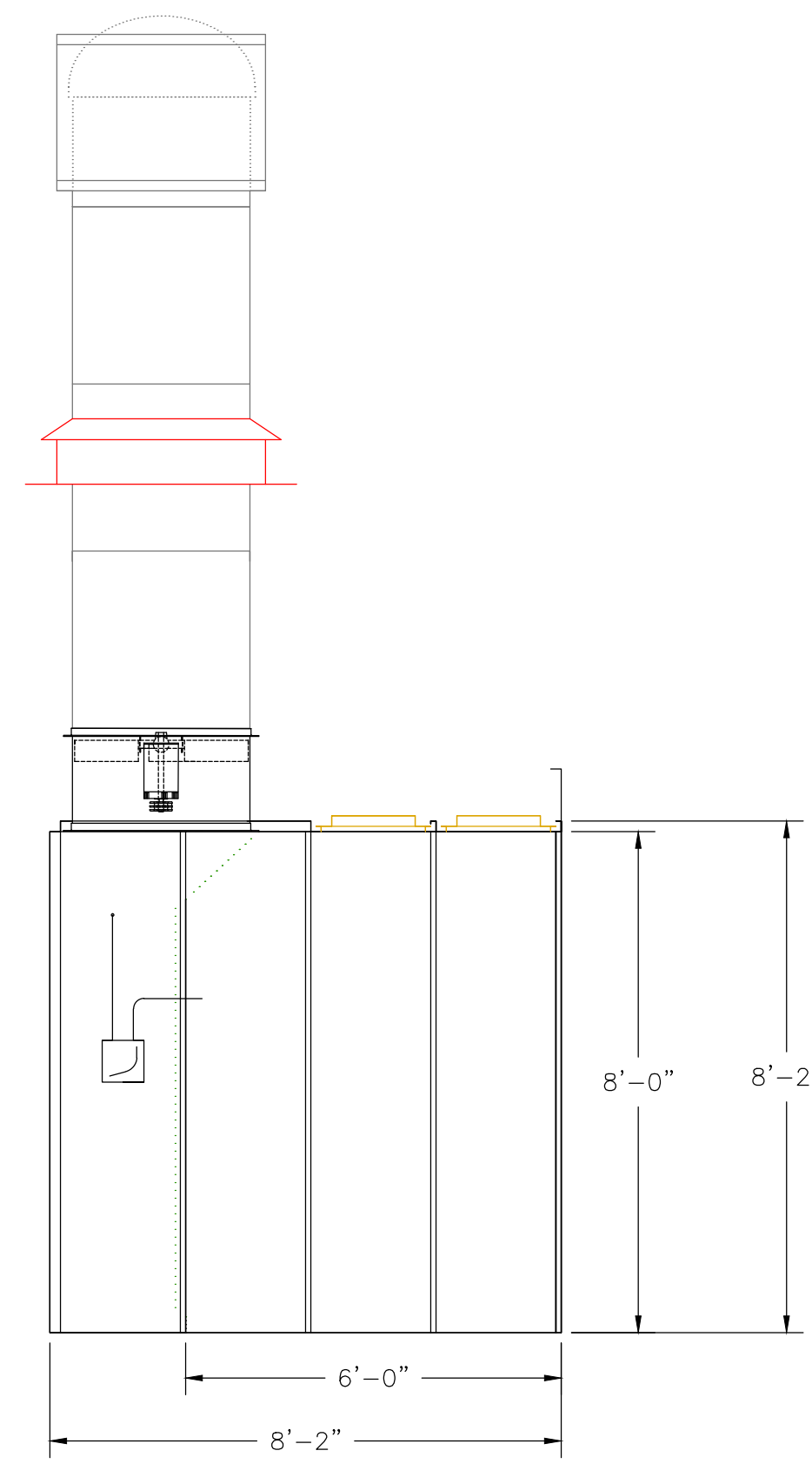


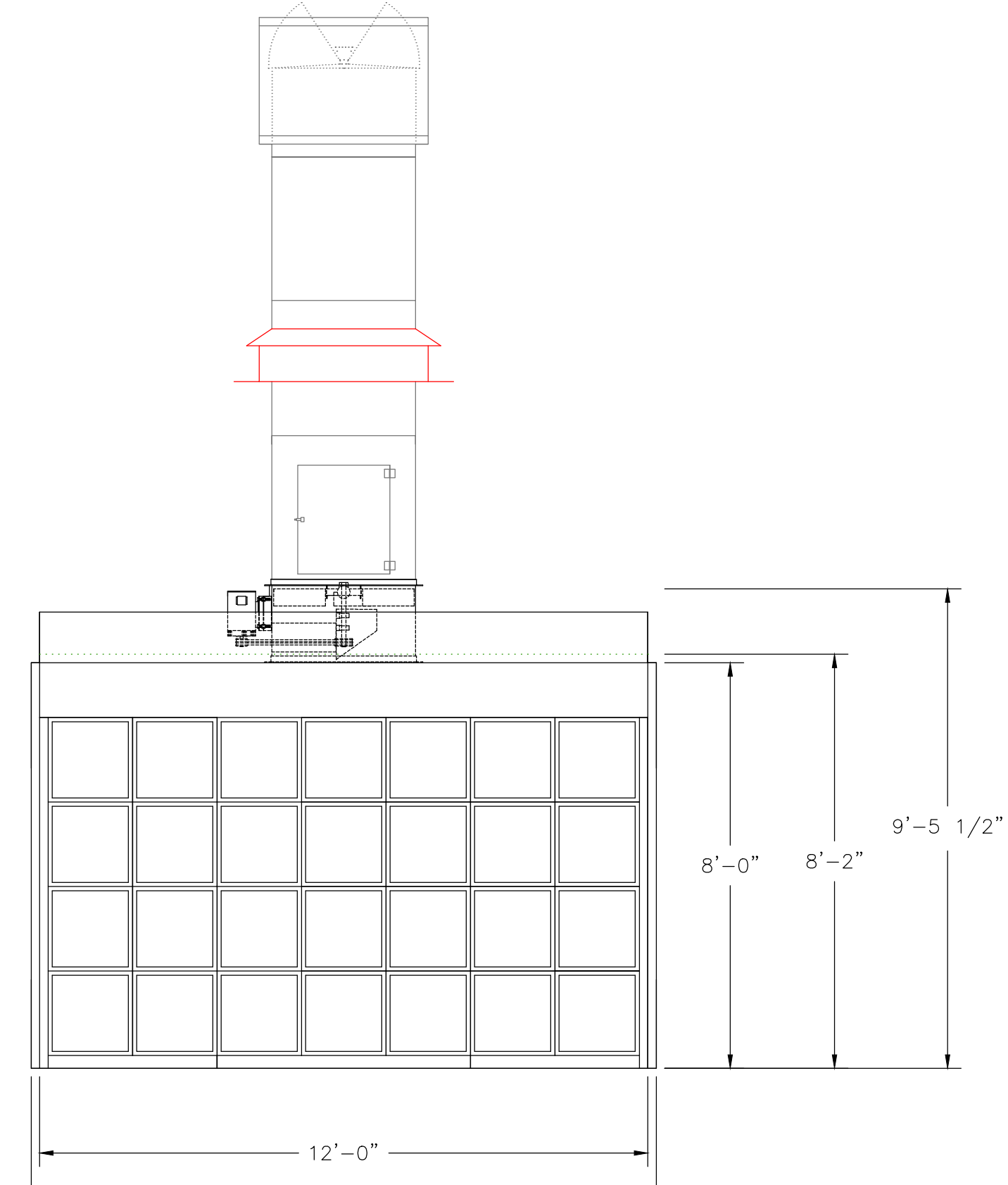
FLOOR FILTER BOOTH MODEL: EIBF128-6



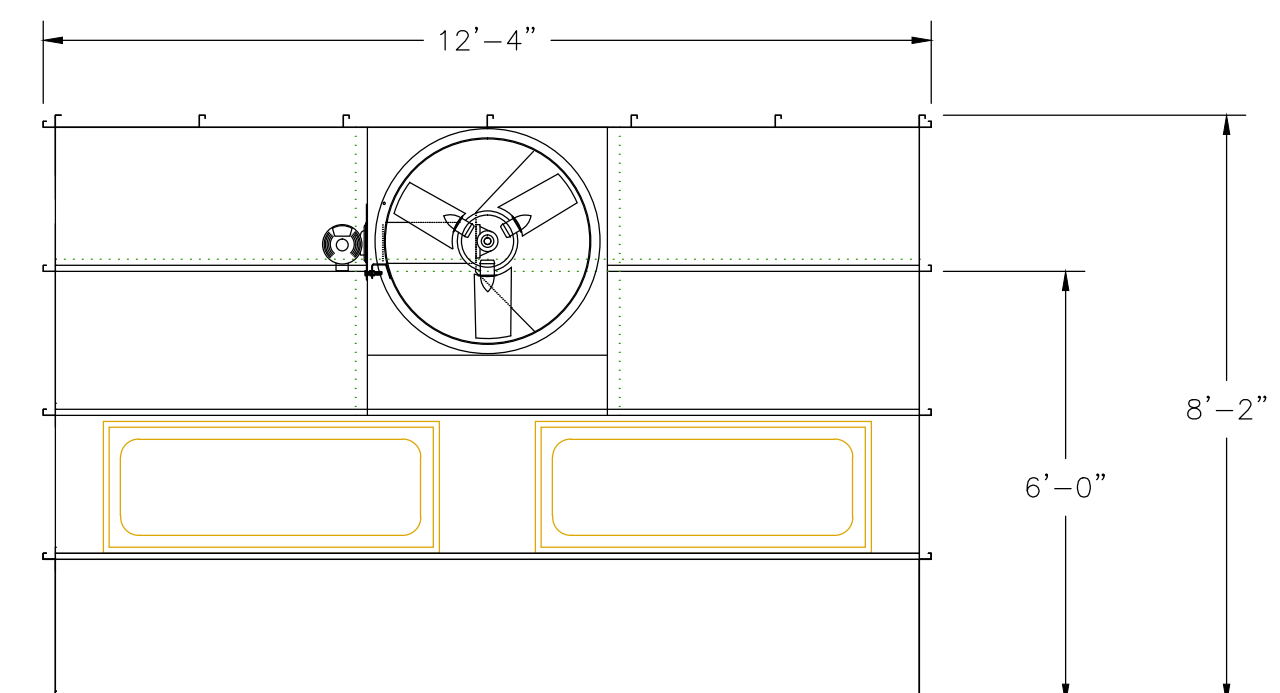
53993
 SPRAY APPLICATIONS
 USING FLAMMABLE
 AND COMBUSTIBLE
 MATERIALS
 CONFORMS TO NFPA STD.33



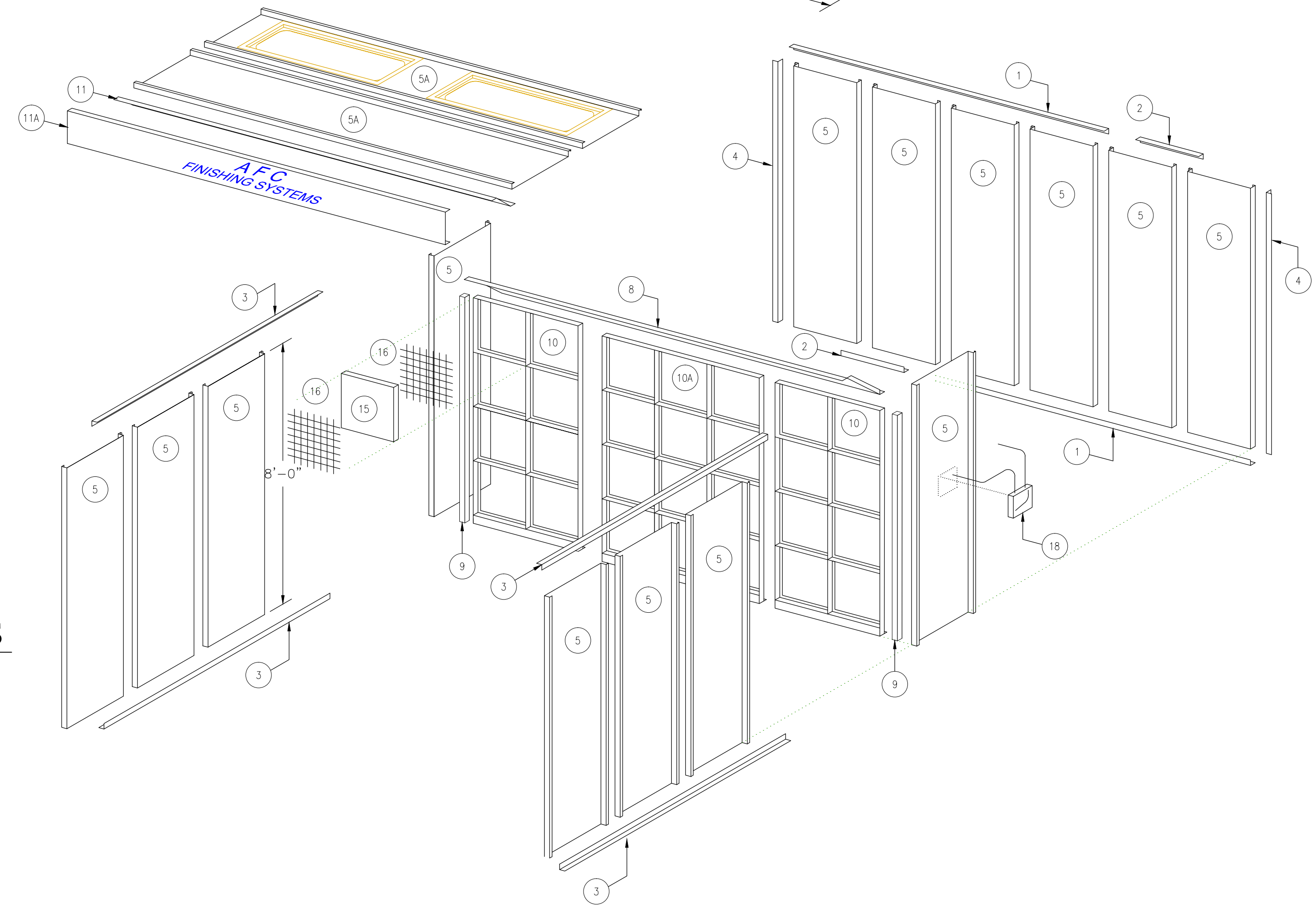
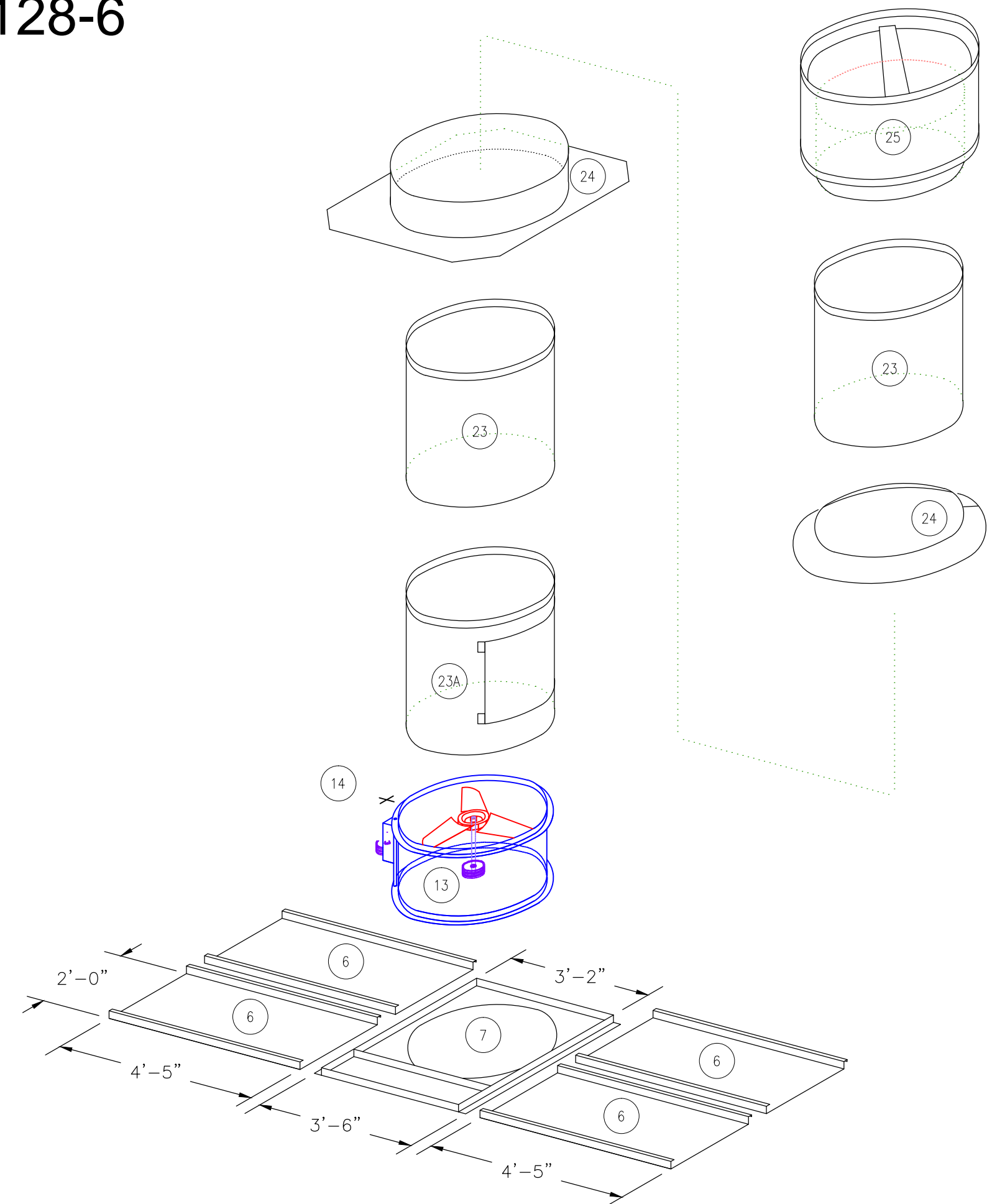
SIDE VIEW



FRONT VIEW



TOP VIEW



BOOTH SPECIFICATIONS

- MODEL: EIBF128 FLOOR FILTER BOOTH, OPEN FACE-ETL LISTED
- LENGTH= 8'-2" O.D. / 6'-0" I.D.
- WIDTH= 12'-4" O.D. / 12'-0" I.D.
- HEIGHT= 9'-0" O.D. / 8'-0" I.D.

EXHAUST SPECIFICATIONS

- EXHAUST FAN TYPE: 1-EACH 34" DIAMETER NON-SPARKING BLADE
- MOTOR TYPE: 1-2HP./3-PHASE.
- VOLTAGE= 230VAC 3-PHASE 60HZ
- C.F.M. RATING= Total 9,600 @ 1/2" STATIC PRESSURE
- EXHAUST CELLS= (28) 20" X 20" X 2" FIBERGLASS ARRESTORS
- ONE MANOMETER ONE MAGNETIC AIR VALVE
- ONE MANUAL CONTROL PANEL MODEL: CP1

CONSTRUCTION

- "SINGLE WALL" 18 GA. G-90 GALVANIZED STEEL PANELS
- BASE AND TIE-IN ANGLE 14 GA. G-90 GALVANIZED STEEL
- SUPPORT CHANNEL 14 GA. G-90 GALVANIZED STEEL
- PANEL ASSEMBLY TYPE= 1/4" X 3/4" SELF-TAPPING SCREWS ON 10" CENTERS TYP.

LIGHTING SPECIFICATIONS

- TYPE = OPEN 4-TUBE FLUORESCENT
- VOLTAGE= STANDARD: 277 VOLT
- QUANTITY= 2-EA. TOTAL.

REV.	DESCRIPTION	DATE	BY



AFC Finishing Systems

250 AIRPORT PARKWAY, OROVILLE, CA 95965
 (800) 331-7744 (530) 533-0179 (FAX)
<http://www.afc-ca.com> email: sales@afc-ca.com

THIS DRAWING IS THE PROPERTY OF AFC FINISHING SYSTEMS AND IS NOT TO BE LOANED, COPIED OR DUPLICATED UNLESS IN DIRECT CONNECTION WITH AFC FINISHING SYSTEMS. ALL RIGHTS RESERVED. THIS DRAWING MUST BE RETURNED UPON REQUEST BY AFC FINISHING SYSTEMS.

DRAWN FOR:

DESCRIPTION: FLOOR FILTER BOOTH MODEL: EIBF128-6			
DRAWN BY: J.BARTON	CHECKED BY:	APPROVED BY:	DATE: 01/21/17
INSTALLED BY:	FIELD CHANGED BY:	SCALE: 3/8"=1'	DRAWING NAME: EIBF128-6-ASSEMBLY