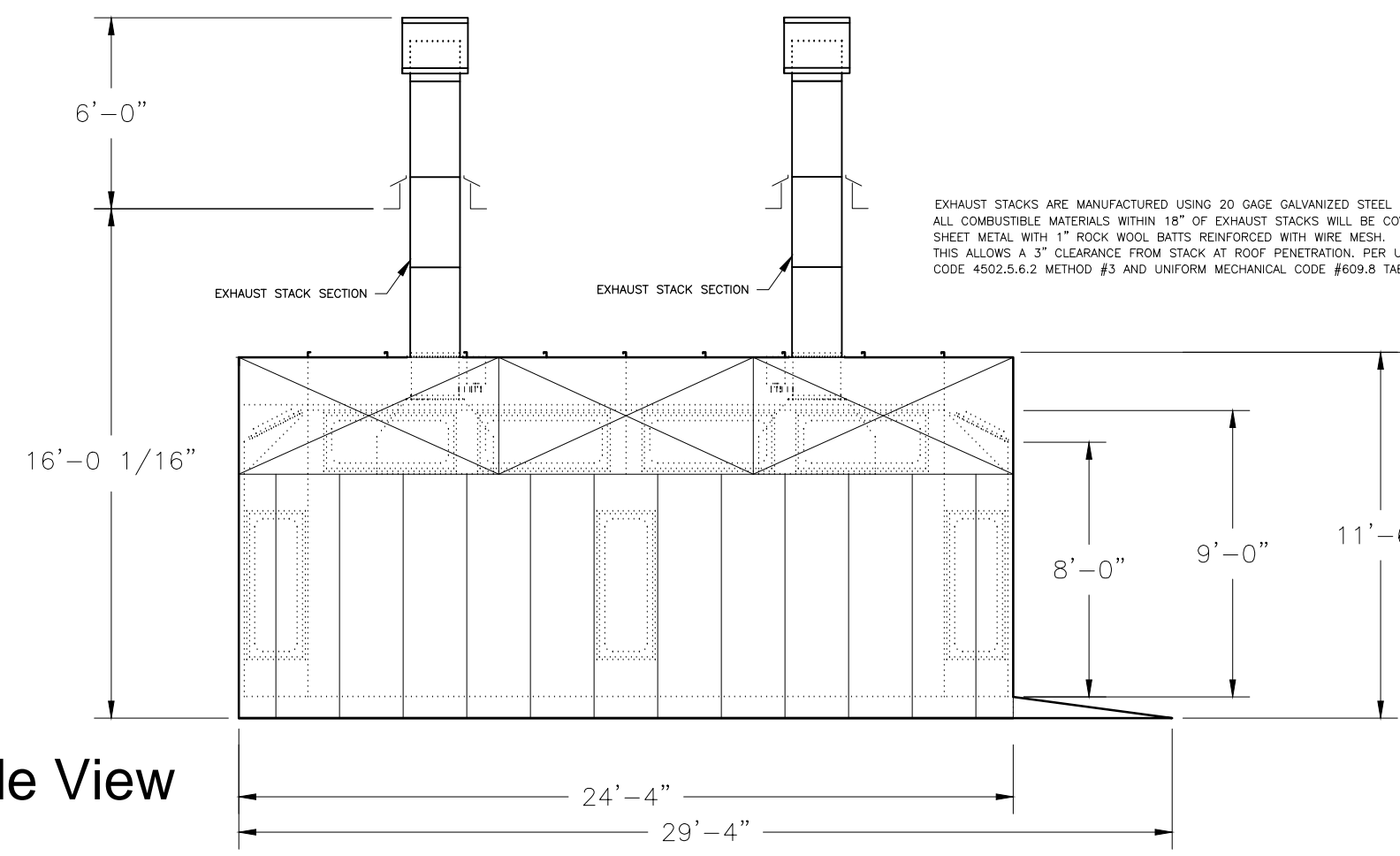
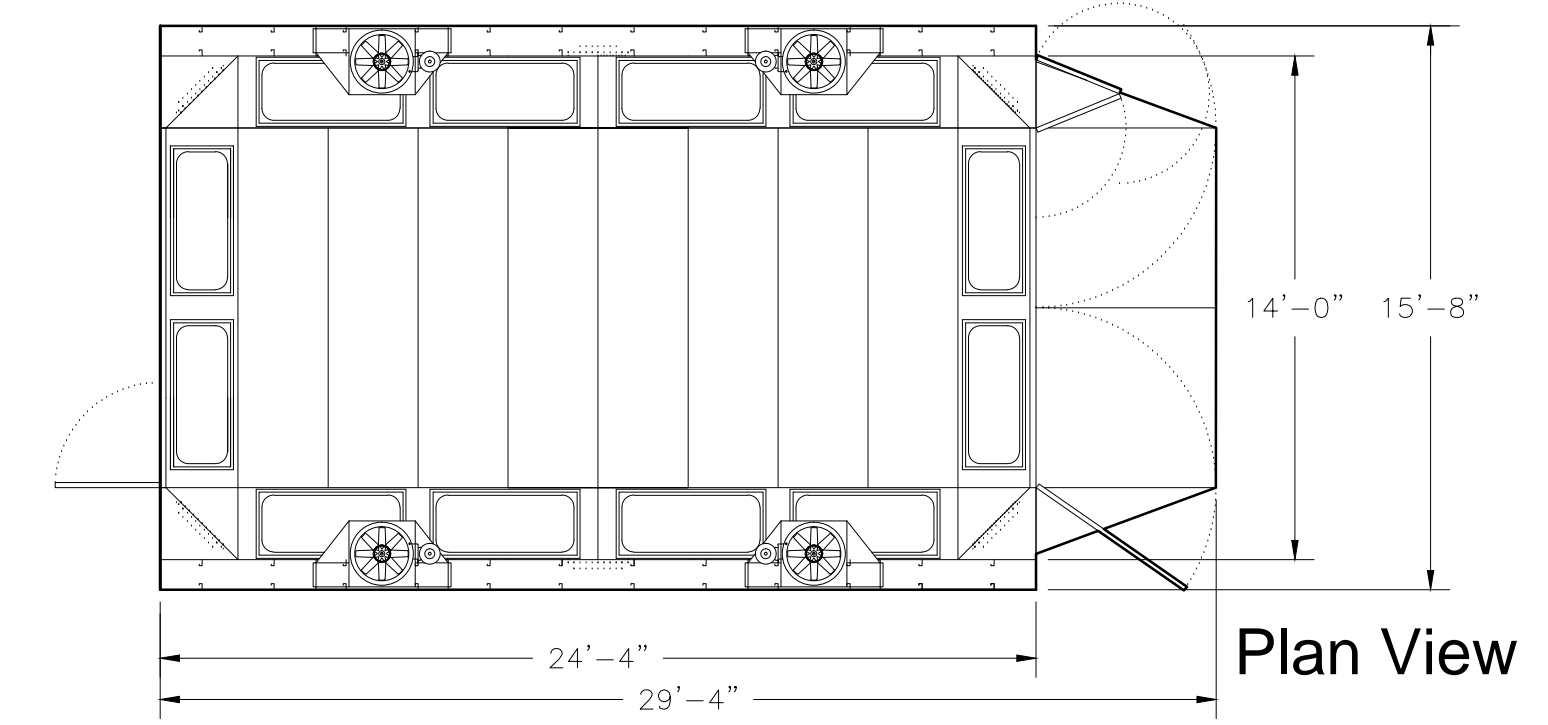


Front View



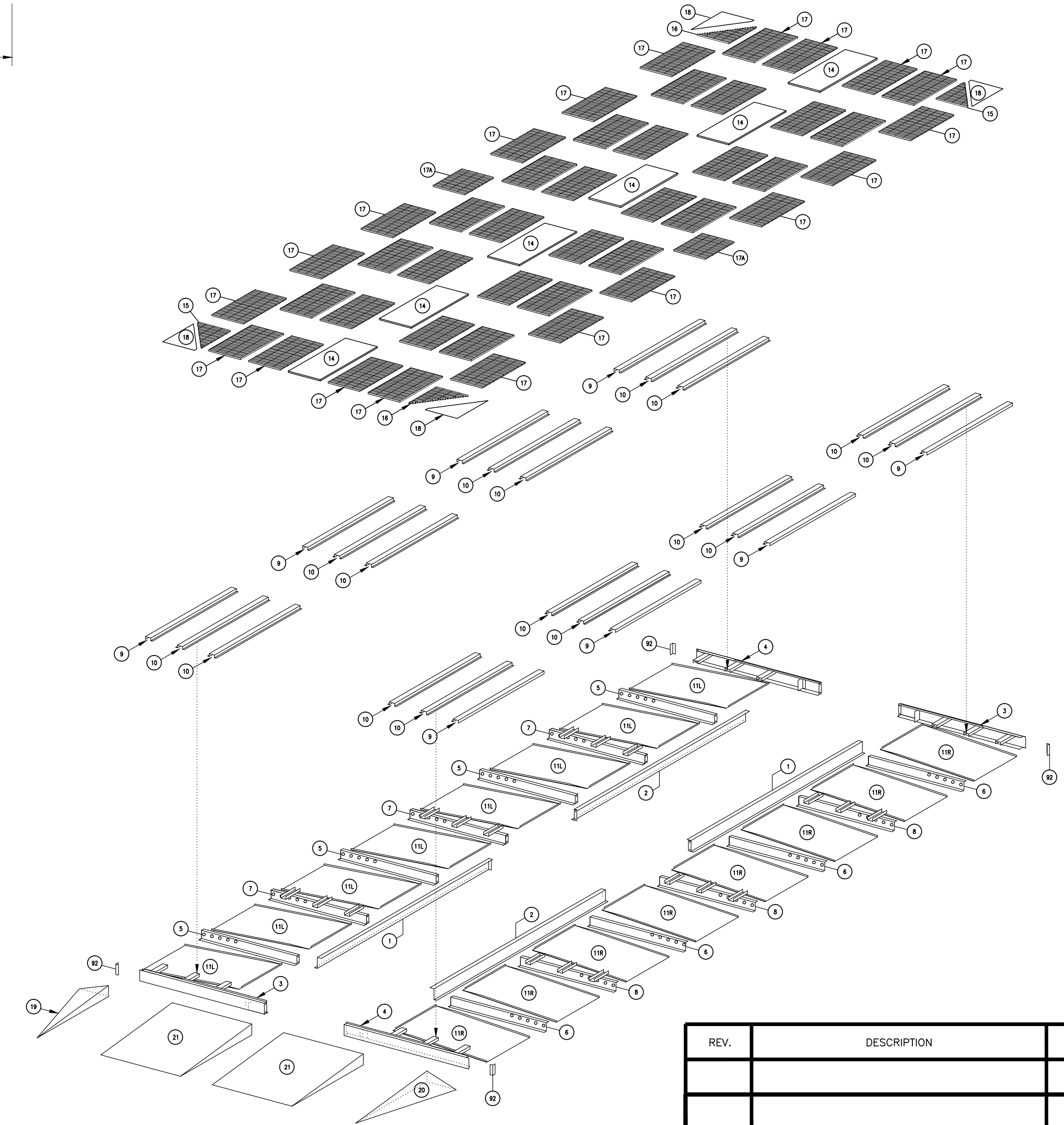
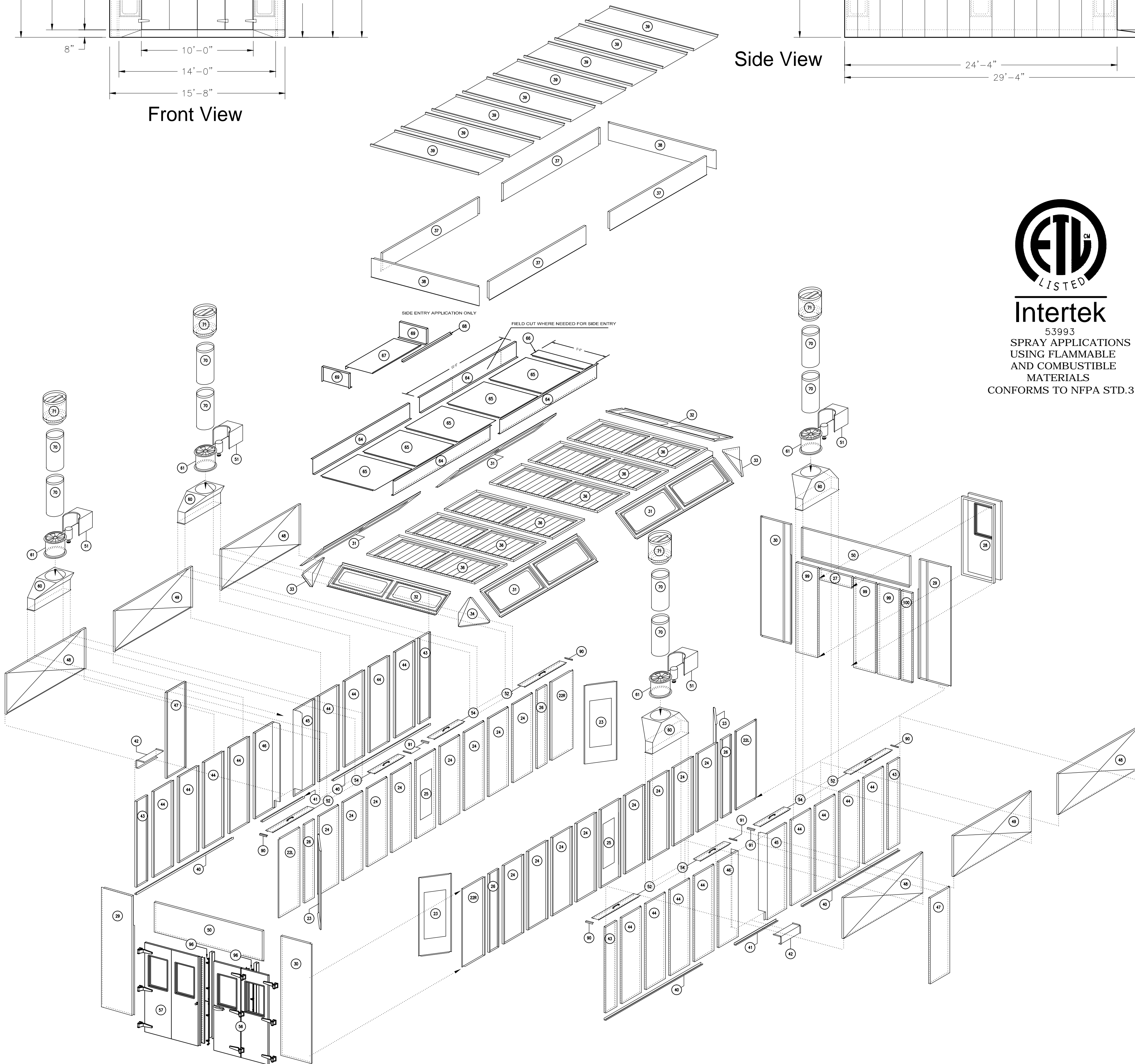
Side View



Plan View



Intertek
 53993
 SPRAY APPLICATIONS
 USING FLAMMABLE
 AND COMBUSTIBLE
 MATERIALS
 CONFORMS TO NFPA STD.33



QUADRAFT DOWNFLO SPRAY BOOTH	
MODEL	QDP2418C: STANDARD
OUTSIDE DIMENSION	15'-8"width x 11'-6"height x 24'-4"length
INSIDE DIMENSION	14'-0"width x 9'-0"height x 24'-0"depth
DRIVE-IN DOORS	clear opening: 9'-9"width x 7'-10 1/2"height
MAN ACCESS DOOR	35"width x 83" height
FOUR EXHAUST FANS	18 3/4"dia. exhaust fans to move up to 19,000 cfm
LIGHT FIXTURES	(12) 4-tube fluorescent fixtures 120 VAC, ETL listed (4) LDP1 390460 (2) LDP1 390440
FAN MOTORS	typical of four exhaust fan motor 208/230/460 volt 3-phase, O.T.D.P., 1 hp each
LIMIT SWITCH	(2) door limit switches
AIR VALVE	magnetic air valve
DRAFT GAUGE	manometer
TURBO CURE	(4) turbo cure fans in each tri-corner
INTAKE FILTERS	(12) 36"x54" laminar III intake filters

REV.	DESCRIPTION	DATE	BY



AFC Finishing Systems

250 AIRPORT PARKWAY, OROVILLE, CA 95965
 (800) 331-7744 (530) 535-0179 (FAX)

<http://www.afc-ca.com> email: sales@afc-ca.com

THIS DRAWING IS THE PROPERTY OF AFC FINISHING SYSTEMS AND IS NOT TO BE LOANED, COPIED OR DUPLICATED UNLESS IN DIRECT CONNECTION WITH AFC FINISHING SYSTEMS. ALL RIGHTS RESERVED. THIS DRAWING MUST BE RETURNED UPON REQUEST BY AFC FINISHING SYSTEMS.

DRAWN FOR:			
DESCRIPTION: QUADRAFT DOWNFLO SPRAY BOOTH MODEL: QDP2418CSB			
DRAWN BY: J.BARTON	CHECKED BY:	APPROVED BY:	DATE: 04/08/2019
INSTALLED BY:	FIELD CHANGED BY:	SCALE: 3/16"=1'	DRAWING NAME: QDP2418CSB-ASSEMBLY