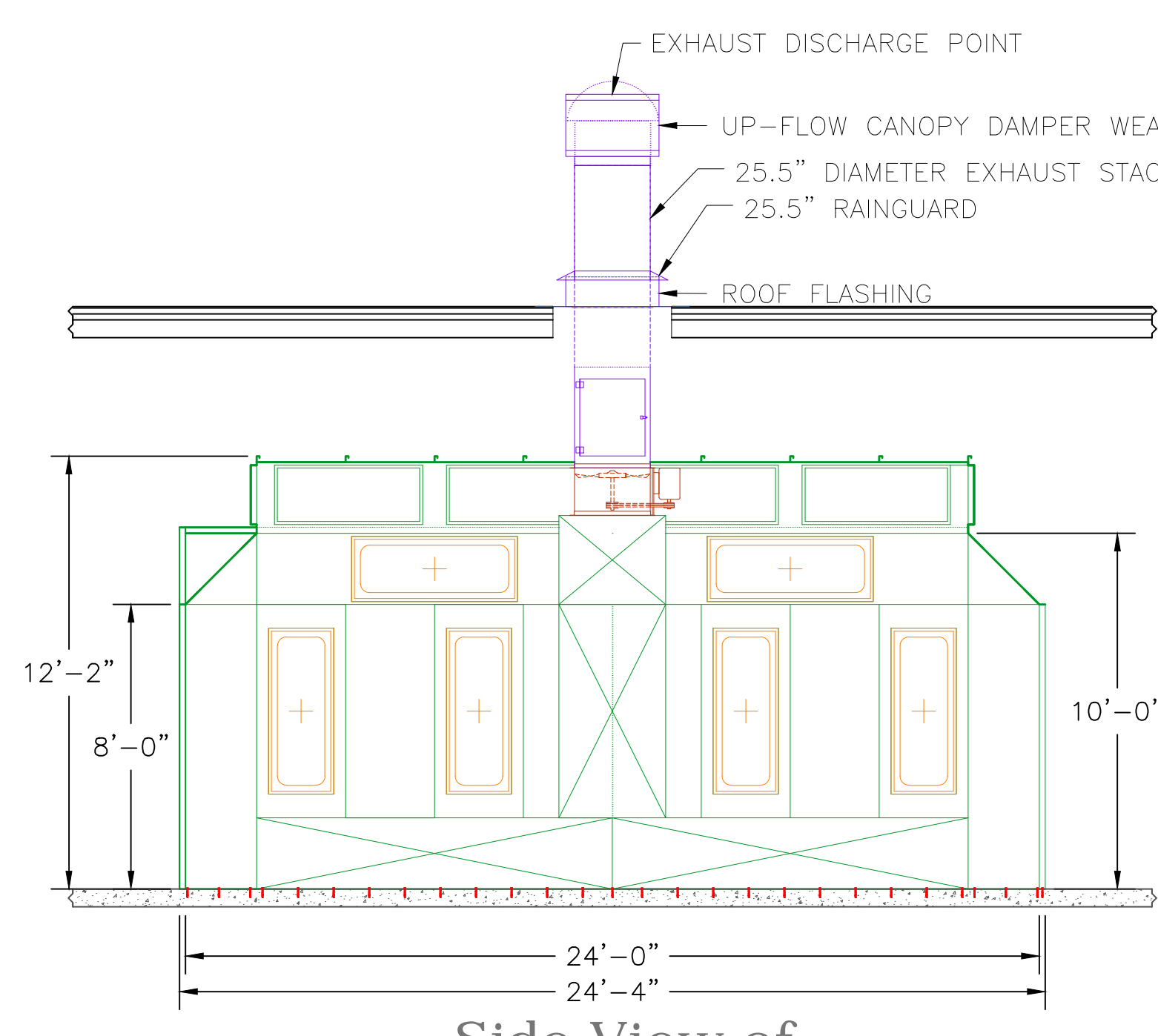
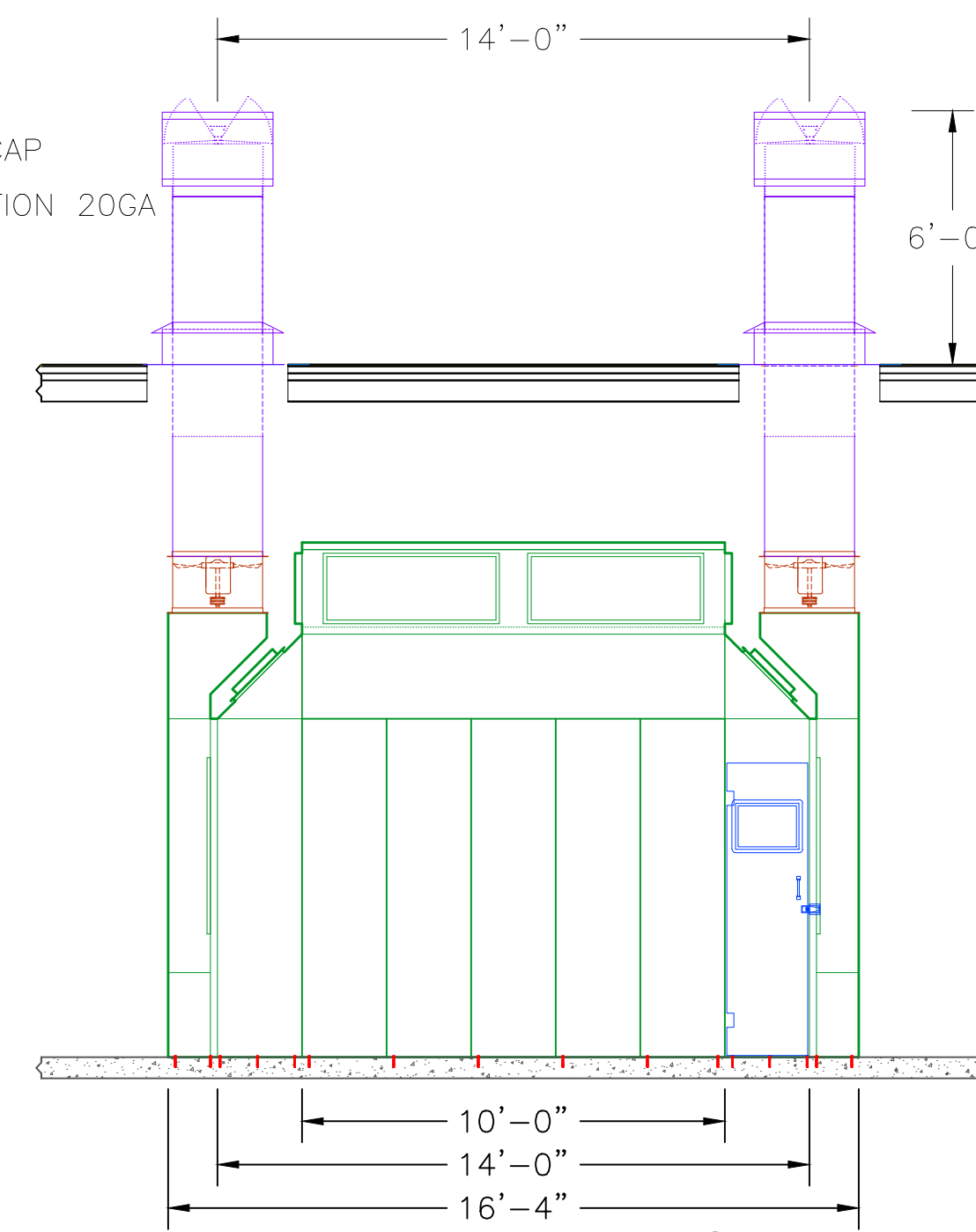


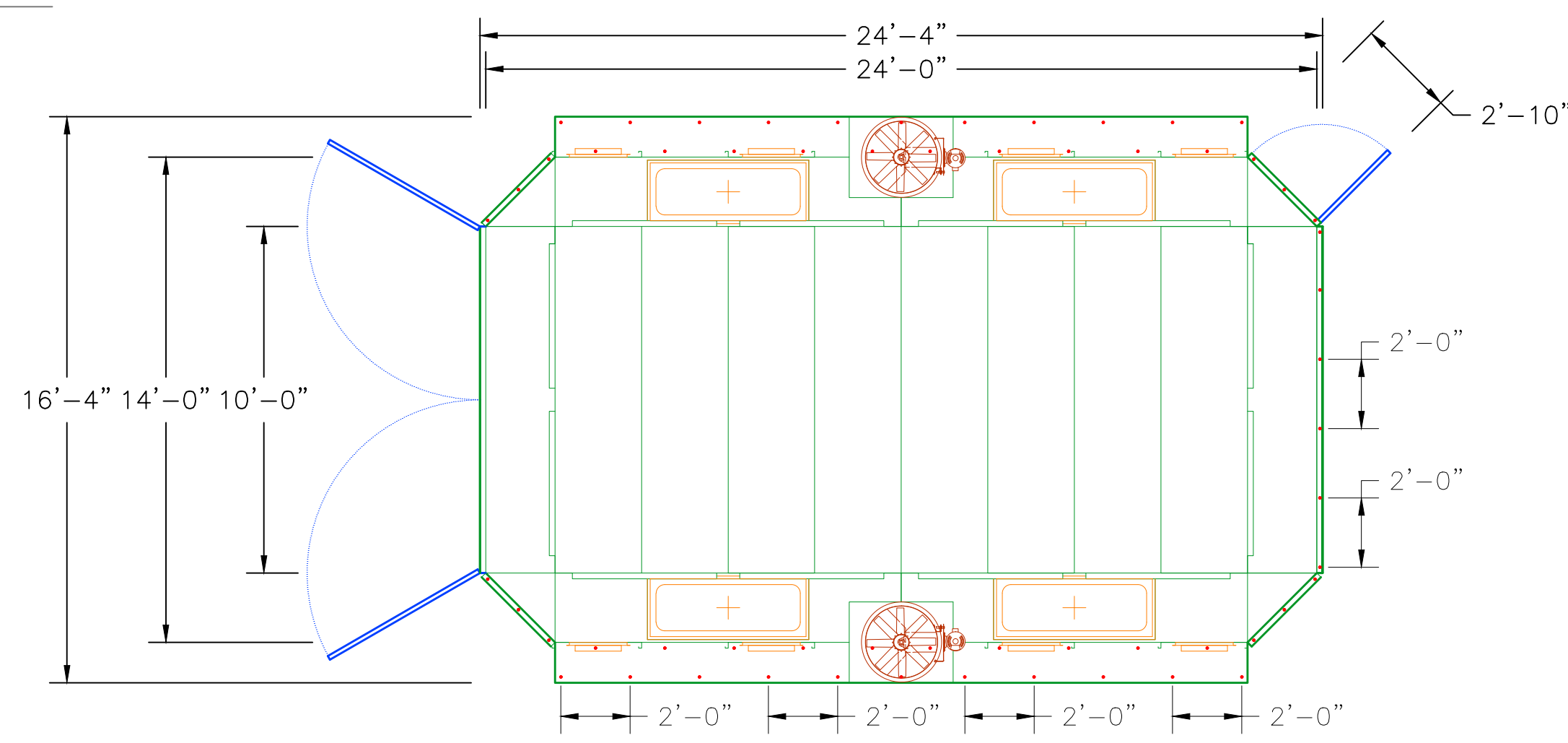
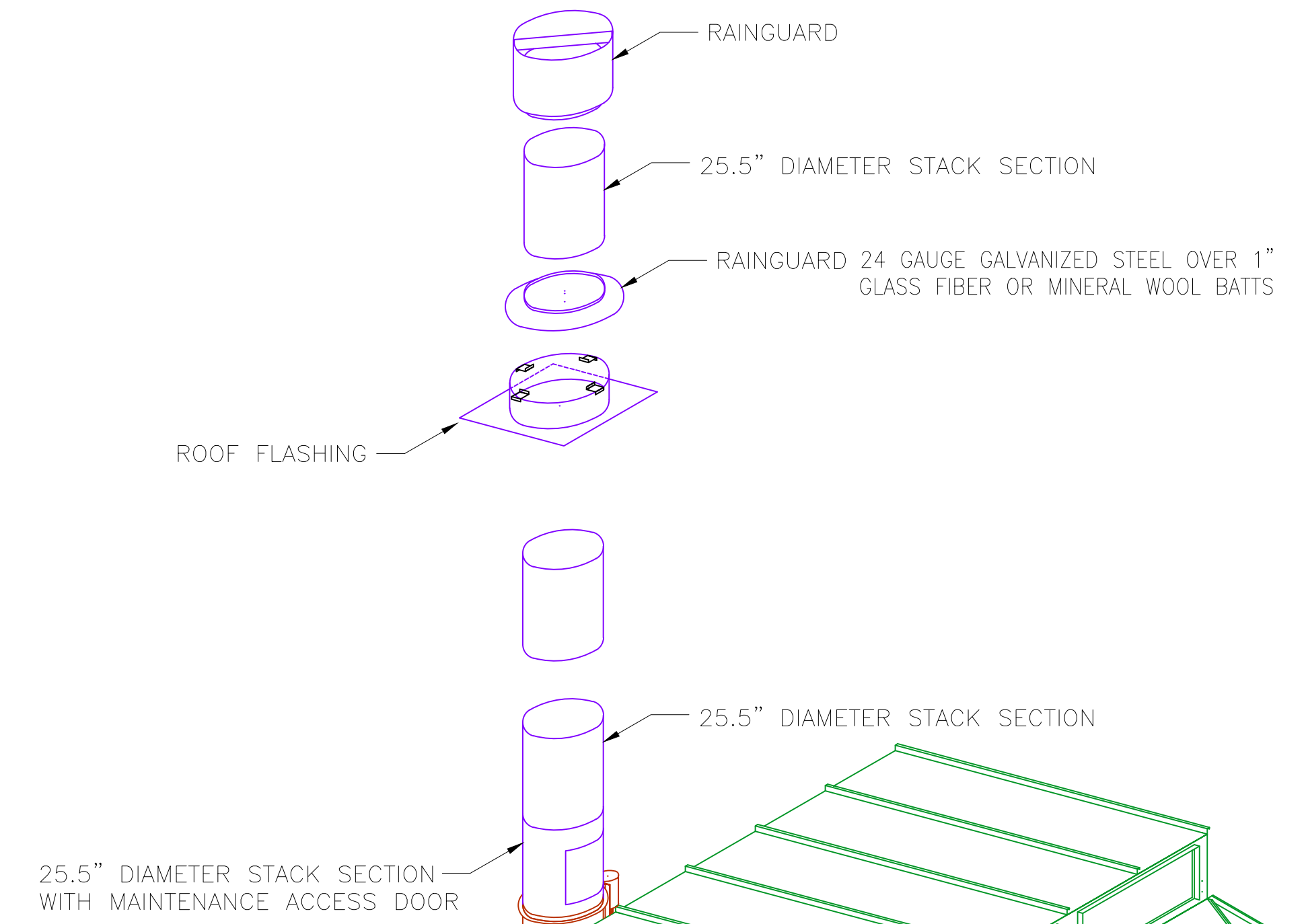
Front View of SDDP2412CSB



Side View of SDDP2412CSB



Rear View of SDDP2412CSB



Top View of SDDP2412CSB



Intertek
53993
SPRAY APPLICATIONS
USING FLAMMABLE
AND COMBUSTIBLE
MATERIALS
CONFORMS TO NFPA STD.33

MODEL: SDDP2412CSB SIDE DOWNFLOW BOOTH - ETL LISTED

BOOTH SPECIFICATIONS

- * UNIT MODEL: SDDP2412CSB (SOLD BACK)
- * LENGTH= 24'-4" O.D. / 24'-0" I.D.
- * WIDTH= 16'-4" O.D./ 14'-0" I.D.
- * HEIGHT= 12'-2" O.D. / 10'-0" I.D.
- * PRODUCT DOOR HEIGHT= 8'-0"
- * PRODUCT DOOR WIDTH= 10'-0"
- * MAN DOOR HEIGHT= 83"
- * MAN DOOR WIDTH= 35" INCLUDES OBSERVATION WINDOW

CONSTRUCTION

- * 18 GAUGE GALVANIZED STEEL
- * PANEL ASSEMBLY TYPE= 1/4" X 3/4" SELF-TAPPING SCREWS ON 18" CENTERS TYP.
- * SELF-TAPPING SCREWS ON 6" CENTERS @ PRE-PUNCHED HOLES IN TIE-IN AND BASE ANGLE.

EXHAUST SPECIFICATIONS

- * EXHAUST FAN TYPE: 2-EACH 25.5" DIAMETER 8-BLADED NON-SPARKING
- * MOTOR TYPE: 2 HP. 3-PH. 230 VOLT 60HZ.
- * C.F.M. RATING= Total 14,000 @ 1/2" STATIC PRESSURE
- * INTAKE FILTER TYPE= (12) 36"X54" LAMINAR III DIFFUSION INTAKE FILTERS
- * EFFICIENCY RATING= 99 PERCENT @ 10 MICRONS
- * (20) ROWS 20"X20" FIBERGLASS PAINT ARRESTOR WITH OVER 98 PERCENT EFFICIENCY.

LIGHTING SPECIFICATIONS

- * LIGHT FIXTURE TYPE = ETL LISTED 4-TUBE FLORESCENT
- * VOLTAGE = 120 VOLT WITH ENERGY EFFICIENT ELECTRONIC T8 BALLAST.
- * QUANTITY = 12-EA. TOTAL.
- * TYPE = 11 ARE OPEN TYPE AND ONE CLASS 1 DIVISION 2 TYPE.

MANUAL CONTROL PANEL

- * UNIT MODEL: CP2
- * EXHAUST ON/OFF SWITCH
- * LIGHTING ON/OFF SWITCH
- * EATON CUTLER HAMMER MOTOR PROTECTION AND CONTROL DEVICES.
- * TERMINAL STRIP FOR EASY FIELD WIRING OF ALL FACTORY SUPPLIED COMPONENTS ON BOOTH.



Intertek
53993
CONFORMS TO ILL. STD. 558A
MODEL: CP2
INDUSTRIAL CONTROL
EQUIPMENT

2012 INTERNATIONAL MECHANICAL CODE MINIMUM METAL THICKNESS FOR ROUND DUCTS FOR PRODUCT-CONVEYING SYSTEM DUCTS. SECTION 510 HAZARDOUS EXHAUST SYSTEMS TABLE-510.8	
DIAMETER OF DUCT (INCHES)	MINIMUM SHEET THICKNESS (INCHES)
0" TO 8" INCHES	0.021 (24 GAGE)
9" TO 18" INCHES	0.027 (22 GAGE)
19" TO 30" INCHES	0.033 (20 GAGE)
OVER 30" INCHES	0.044 (18 GAGE)

2012 UNIFORM MECHANICAL CODE SECTION 506.7 DUCT CLEARANCES:
DUCT AND SYSTEM COMPONENTS HANDLING COMBUSTIBLE MATERIAL AND OPERATING AT LESS THAN 140°F (60°C) SHALL HAVE A CLEARANCE OF NOT LESS THAN 18 INCHES (457MM) FROM COMBUSTIBLE CONSTRUCTION OR COMBUSTIBLE MATERIAL. [NFPA 91:4.6.2]

EXCEPTIONS:
(1) WHERE THE DUCTWORK SYSTEM IS EQUIPPED WITH AN APPROVED AUTOMATIC EXTINGUISHING SYSTEM DESIGNED FOR A SPECIFIC HAZARD, THE CLEARANCE SHALL BE PERMITTED TO BE REDUCED TO 6 INCHES (152mm) FROM COMBUSTIBLE MATERIALS AND 1/2 OF AN INCH (12.7mm) FROM COMBUSTIBLE CONSTRUCTION. [NFPA 91:4.6.2.1]
(2) WHERE THE COMBUSTIBLE MATERIAL AND CONSTRUCTION IS PROTECTED BY THE USE OF MATERIALS OR PRODUCTS LISTED FOR PROTECTION PURPOSES OR IN ACCORDANCE WITH TABLE 506.7.

AT TABLE 506.7, FORM OF PROTECTION: (C) 0.024 OF AN INCH (NO. 24 GAUGE) SHEET METAL OVER 1 INCH GLASS FIBER OR MINERAL WOOL BATTS REINFORCED WITH WIRE, OR EQUIVALENT, ON REAR FACE WITH NOT LESS THAN 1 INCH AIR GAP (MINIMUM ALLOWABLE REDUCTION IN CLEARANCE "PERCENT") AS WALL PROTECTOR 66% AND AT CEILING 66%.

REV.	DESCRIPTION	DATE	BY
 AFC FINISHING SYSTEMS 250 AIRPORT PARKWAY, OROVILLE, CA 95965 (800) 331-7744 (530) 533-0179 (FAX) http://www.afc-ca.com email: sales@afc-ca.com <small>THIS DRAWING IS THE PROPERTY OF AFC FINISHING SYSTEMS AND IS NOT TO BE LOANED, COPIED OR DUPLICATED UNLESS IN DIRECT CONNECTION WITH AFC FINISHING SYSTEMS. ALL RIGHTS RESERVED. THIS DRAWING MUST BE RETURNED UPON REQUEST BY AFC FINISHING SYSTEMS.</small>			
DRAWN FOR: C.A. MARKETING			
DESCRIPTION: AFC SIDE DOWNFLO SPRAY BOOTH MODEL: SDDP2412CSB			
DRAWN BY: J.BARTON	CHECKED BY:	APPROVED BY:	DATE: 01/04/2018
INSTALLED BY:	FIELD CHANGED BY:	SCALE: 48 OR 1/4"=1'	DRAWING NAME: SDD2412CSB