



The Suit & Tuxedo

RENTAL COLLECTION

STORE COPY
2026

Slim Fit Styles for **EVERY BODY**



**Fashion-Forward & Comfortable
for any shape or size**

(up to size 74)

COAT FABRIC SWATCHES

FOR RENTAL

Choose your look from our collection of colored tuxedos & suits

Reference page number for suit & tuxedo details



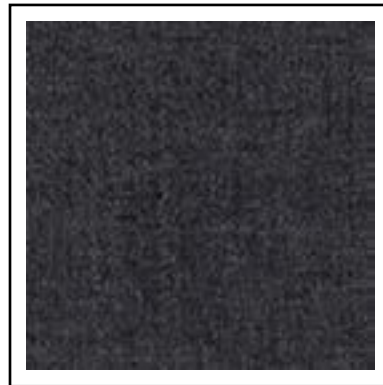
Color: Black Paisley
Style: 182
Page: 37



Color: Granite Paisley
Style: 192
Page: 36



Color: White/Silver Paisley
Style: 172
Page: 40



Color: Steel Grey
Styles: 391, 392
Page: 30, 31



Color: Medium Grey
Style: 350
Page: 24



Color: Heather Grey
Style: 262
Page: 25



Color: Burgundy
Style: 201
Page: 33



Color: Apple Red Paisley
Style: 122
Page: 38



Color: Hunter Green
Style: 222
Page: 27

COAT FABRIC SWATCHES

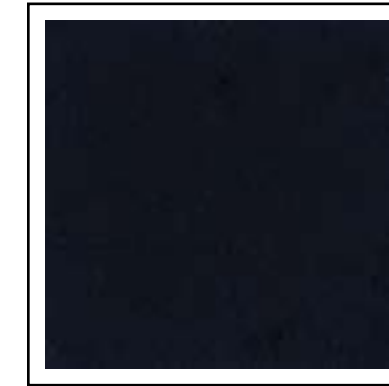
FOR RENTAL

Choose your look from our collection of colored tuxedos & suits

Reference page number for suit & tuxedo details



Color: Navy
Style: 311
Page: 20



Color: Navy
Styles: 371, 372
Page: 28, 29



Color: Blue
Style: 302
Page: 23



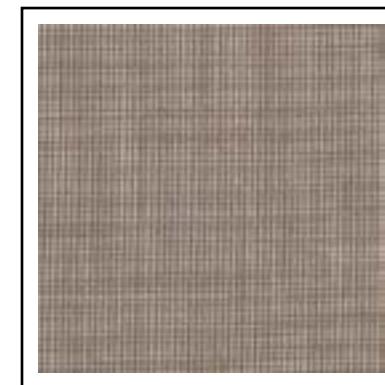
Color: Cobalt Blue
Style: 211
Page: 34



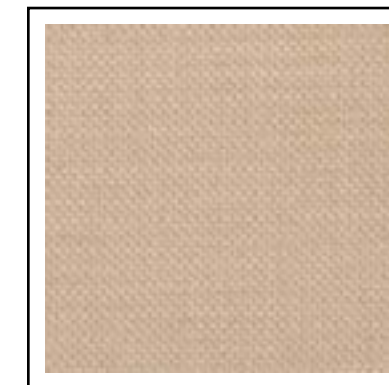
Color: Cobalt Paisley
Style: 132
Page: 39



Color: Indigo Blue
Style: 221
Page: 35



Color: Sand
Style: 202
Page: 26



Color: Tan
Style: 252
Page: 41



Color: Tan
Style: 272
Page: 19



shown:
ALLURE MEN®
Allure Men Heather Grey Clayton Suit - Style 262/N262



RENT OR BUY

THE SAME DESIGNER STYLES SO THE WHOLE PARTY MATCHES



RENT OR BUY STYLES



MICHAEL KORS
Legacy Performance Stretch
Slim Fit Tuxedo

To Rent Style 921 see page 17
To Buy Style N921 see page 6 in
the JFW For Purchase Catalog



MICHAEL KORS
Black Performance Stretch
Slim Fit Wedding Suit

To Rent Style 421 see page 18
To Buy Style N421 see page 9 in
the JFW For Purchase Catalog



MICHAEL KORS
Tan Performance Stretch
Slim Fit Wedding Suit

To Rent Style 272 see page 19
To Buy Style N272 see page 7 in
the JFW For Purchase Catalog



MICHAEL KORS
Milan Performance Stretch
Slim Fit Tuxedo

To Rent Style 931 see page 21
To Buy Style N931 see page 8 in
the JFW For Purchase Catalog



MICHAEL KORS
Blue Performance Stretch
Slim Fit Wedding Suit

To Rent Style 302 see page 23
To Buy Style N302 see page 11
in the JFW For Purchase Catalog



MICHAEL KORS
Medium Grey Performance Stretch
Slim Fit Wedding Suit

To Rent Style 350 see page 24
To Buy Style N350 see page 12
in the JFW For Purchase Catalog



ALLURE MEN
Heather Grey Clayton
Slim Fit Suit

To Rent Style 262 see page 25
To Buy Style N262 see page 14
in the JFW For Purchase Catalog



MICHAEL KORS
Navy Sterling
Wedding Suit

To Rent Style 372 see page 29
To Buy Style N372 see page 10
in the JFW For Purchase Catalog



MICHAEL KORS
Steel Grey Sterling
Wedding Suit

To Rent Style 392 see page 31
To Buy Style N392 see page 13
in the JFW For Purchase Catalog



MÖD
Granite Aries Paisley
Slim Fit Tuxedo

To Rent Style 192 see page 36
To Buy Style N192 see page 33
in the JFW For Purchase Catalog



MÖD
Black Aries Paisley
Slim Fit Tuxedo

To Rent Style 182 see page 37
To Buy Style N182 see page 32
in the JFW For Purchase Catalog



MÖD
White/Silver Aries Paisley
Slim Fit Tuxedo

To Rent Style 172 see page 40
To Buy Style N172 see page 31
in the JFW For Purchase Catalog



stephengeoffrey
Ivory Classic Shawl
Wedding Tuxedo

To Rent Style 601 see page 47
To Buy Style N601C see page 17
in the JFW For Purchase Catalog



stephengeoffrey
White Classic Shawl
Wedding Tuxedo

To Rent Style 701 see page 50
To Buy Style N70 see page 17 in
the JFW For Purchase Catalog

RENT OR BUY



Groom Look

To Buy Style N192:
see page 33 in the
JFW For Purchase Catalog

Groomsmen Look

To Rent Style 421:
see page 18



Groom Look

To Buy Style N272C:
see page 7 in the
JFW For Purchase Catalog

Groomsmen Look

To Rent Style 421:
see page 18



RENT OR BUY



Groom Look

To Buy Style NOBC:
see page 27 in the
JFW For Purchase Catalog

Groomsmen Look

To Rent Style 302:
see page 23



Groom Look

To Buy Style NHSC:
see page 26 in the
JFW For Purchase Catalog

Groomsmen Look

To Rent Style 350:
see page 24



Groom Look

To Buy Style N292C:
see page 15 in the
JFW For Purchase Catalog

Groomsmen Look

To Rent Style 202:
see page 26



Groom Look

To Buy Style NHGC:
see page 23 in the
JFW For Purchase Catalog

Groomsmen Look

To Rent Style 421:
see page 18



RENT OR BUY

2 PANT FITS 1 PERFECT FIT

MODERN & SLIM FIT OPTIONS Tailored to Your Style



Groom Look

Black Slim Fit
Performance Stretch Pants
Pant Style: 921

Groomsmen Look

Black Modern Fit
Performance Stretch Pants
Pant Style: 920



MATCHES COAT STYLE: 252

251-Slim Fit Pant

252-Modern Fit Pant



MATCHES COAT STYLES: 371, 372

371-Slim Fit Pant

372-Modern Fit Pant



Tan Modern Fit
Performance Stretch Pants
Pant Style: 270



MATCHES COAT STYLES: 921, 421, 931, 981

921-Slim Fit Pant

920-Modern Fit Pant



MATCHES COAT STYLE: 272

272-Slim Fit Pant

270-Modern Fit Pant



MATCHES COAT STYLES: 391, 392

391-Slim Fit Pant

392-Modern Fit Pant



MATCHES COAT STYLE: 990

991-Slim Fit Pant

990-Modern Fit Pant



921-Legacy Performance Stretch
Slim Fit Tuxedo
by Michael Kors
page 17



421-Black Performance Stretch
Slim Fit Wedding Suit
by Michael Kors
page 18



931-Milan Performance Stretch
Slim Fit Tuxedo
by Michael Kors
page 21



981-Force Performance Stretch
Slim Fit Tuxedo
by Michael Kors
page 22



990-Berkeley
Modern Fit Tuxedo
by Michael Kors
page 32



192-Granite Aries Paisley
Slim Fit Tuxedo
by Mark of Distinction
page 36



182-Black Aries Paisley
Slim Fit Tuxedo
by Mark of Distinction
page 37



852-Emerson
Modern Fit Tuxedo
by Stephen Geoffrey
page 42



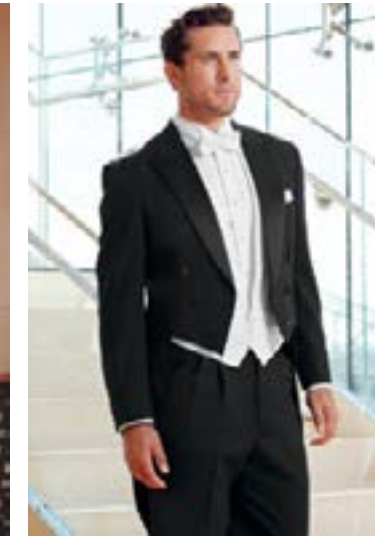
822-Cyprus
Modern Fit Tuxedo
by Stephen Geoffrey
page 43



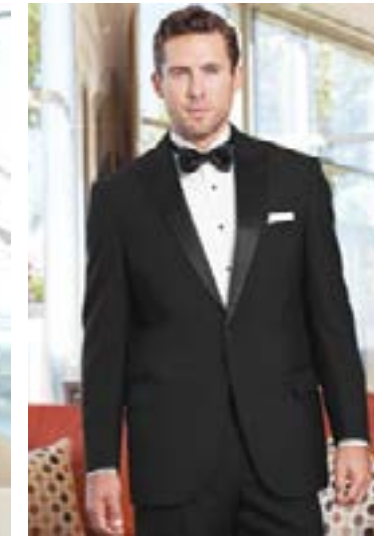
802-Black Troy
Modern Fit Tuxedo
by Stephen Geoffrey
page 44



820-Classic Notch
Traditional Fit Tuxedo
page 49



588-Classic Peak Fulldress
Traditional Fit Tuxedo
page 51

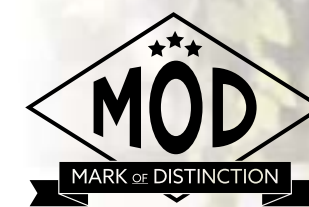


880-Classic Peak
Traditional Fit Tuxedo
page 52

MICHAEL KORS

**Legacy Slim Fit
Performance Stretch Tuxedo**
Style 921

Photo Courtesy of:
Joleen Willis Photography
joleenwillis.com



Black Aries Paisley
Slim Fit Tuxedo
Style 182



GREY/GREEN STYLES



350-Medium Grey Performance Stretch
Slim Fit Wedding Suit
by Michael Kors
page 24



262-Heather Grey Clayton
Slim Fit Suit
by Allure Men
page 25



391-Steel Grey Sterling
Slim Fit Wedding Suit
by Michael Kors
page 30



392-Steel Grey Sterling
Modern Fit Wedding Suit
by Michael Kors
page 31



222-Hunter Green Luka
Slim Fit Suit
by Ike Behar
page 27



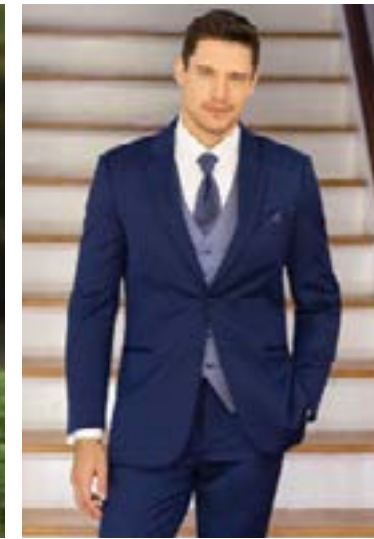
ALLURE MEN

Heather Grey Clayton
Slim Fit Suit
Style 262

BLUE/RED STYLES



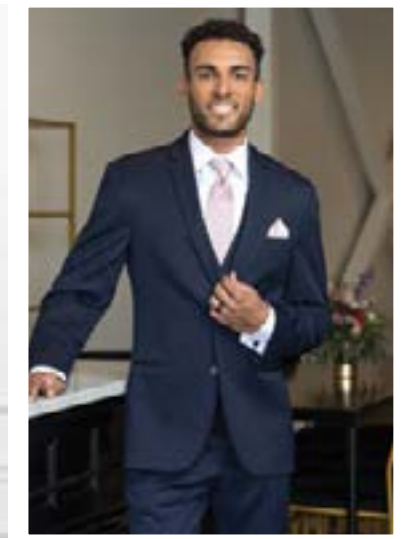
311-Navy Performance Stretch
Slim Fit Tuxedo
by Michael Kors
page 20



302-Blue Performance Stretch
Slim Fit Wedding Suit
by Michael Kors
page 23



371-Navy Sterling
Slim Fit Wedding Suit
by Michael Kors
page 28



372-Navy Sterling
Modern Fit Wedding Suit
by Michael Kors
page 29



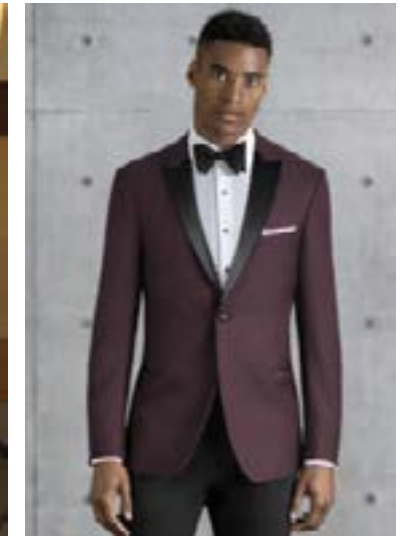
211-Cobalt Blue Tribeca
Slim Fit Tuxedo
by Ike Behar
page 34



221-Indigo Blue Lane
Slim Fit Tuxedo
by Ike Behar
page 35



132-Cobalt Aries Paisley
Slim Fit Tuxedo
by Mark of Distinction
page 39



201-Burgundy Empire
Slim Fit Tuxedo
Kenneth Cole
page 33



122-Apple Red Aries Paisley
Slim Fit Tuxedo
by Mark of Distinction
page 38

MICHAEL MICHAEL KORS

Blue Performance Stretch
Slim Fit Wedding Suit
Style 302



TAN, WHITE & IVORY STYLES

FASHION STYLES



272-Tan Performance Stretch
Slim Fit Wedding Suit
by Michael Kors
page 19



202-Sand Brunswick
Slim Fit Suit
by Allure Men
page 26



252-Tan Havana
Modern Fit Suit
by Lord West
page 41



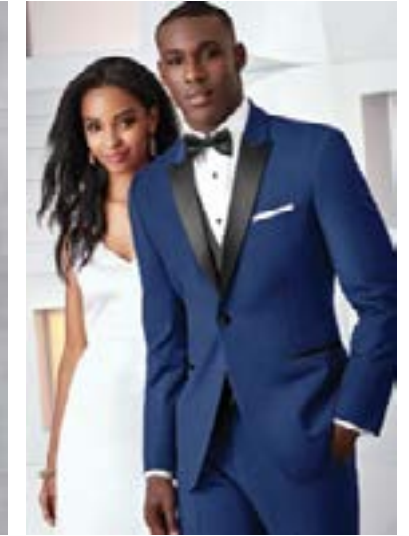
311-Navy Performance Stretch
Slim Fit Tuxedo
by Michael Kors
page 20



222-Hunter Green Luka
Slim Fit Suit
by Michael Kors
page 27



201-Burgundy Empire
Slim Fit Tuxedo
by Kenneth Cole
page 33



211-Cobalt Blue Tribeca
Slim Fit Tuxedo
by Ike Behar
page 34



172-White/Silver Aries Paisley
Slim Fit Tuxedo
by Mark of Distinction
page 40



712-White Troy
Modern Fit Tuxedo
by Stephen Geoffrey
page 45



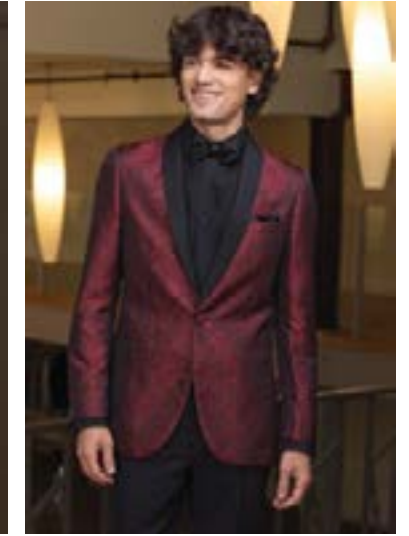
751-Waverly
Slim Fit Tuxedo
by Ike Behar
page 46



192-Granite Aries Paisley
Slim Fit Tuxedo
by Mark of Distinction
page 36



182-Black Aries Paisley
Slim Fit Tuxedo
by Mark of Distinction
page 37



122-Apple Red Aries Paisley
Slim Fit Tuxedo
by Mark of Distinction
page 38



701-White Classic Shawl
Modern Fit Tuxedo
by Stephen Geoffrey
page 50



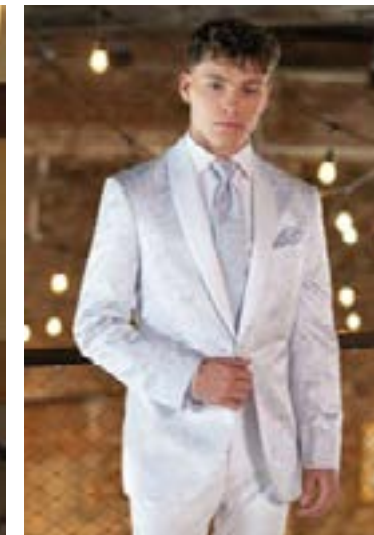
601-Ivory Classic Shawl
Modern Fit Tuxedo
by Stephen Geoffrey
page 47



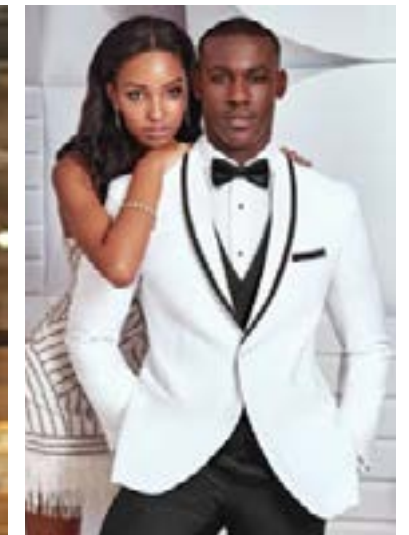
602-Ivory Troy
Modern Fit Tuxedo
by Stephen Geoffrey
page 48



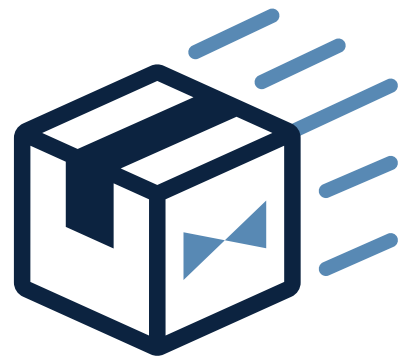
132-Cobalt Aries Paisley
Slim Fit Tuxedo
by Mark of Distinction
page 39



172-White/Silver Aries Paisley
Slim Fit Tuxedo
by Mark of Distinction
page 40



751-Waverly
Slim Fit Tuxedo
by Ike Behar
page 46



DIRECT DELIVERY

Home, Office, Destination...
We'll Deliver There!

1 Way Shipping

\$15

Ship Directly to You.
Return to the Store.

2 Way Shipping

\$30

Ship Directly to You.
Ship Back to JFW.



RENT
OR
BUY

To BUY see page 6 in the
JFW For Purchase Catalog

AVAILABLE WITH
MODERN OR
SLIM FIT PANTS



MICHAEL KORS

Legacy Performance
Stretch Tuxedo
Style 921

S **SLIM FIT**
Contemporary styling
with a slimming
appearance.

Size Scale: A2 - see page 57

Men's coat sizes: 34-74

Boys' coat sizes: 3-18

921 pant sizes: 18-71

Features:

- ▶ Tailored to fit all body types
- ▶ CoolMax® performance stretch fabric
- ▶ Satin notch lapel, side-vented, 30 1/2" length
- ▶ Shown with slim fit pants with belt loops and buttons to accommodate suspenders



Fabric Content:

CoolMax®/
Sorona®/Wool

To order ensemble as shown:

Coat	921
Slim Fit Pants	921
Shirt (upcharge)	96W
Tie	BSAT
Fullback Vest	F921
Jewelry	BLACK
Formal Shoes (upcharge)	BXS
Pocket Square (purchase only)	PWWH

Black Pant Options:

Slim Fit Pants	921
Modern Fit Pants	920

DIAMOND COLLECTION



Ring Bearer SAVINGS

ALL STYLES are specially
priced for your little guy.

To qualify for the Ring Bearer Special Price:

- ▶ The Ring Bearer must be accompanied by the groom's tuxedo or suit rental and five fully paid rentals in the wedding party.
- ▶ Ring Bearer's tuxedo or suit may not exceed size 16.

All Tuxedos and Suits
are specially priced
for the Ring Bearer at:

\$120

Any coat, any pant, basic shirt and premium vest included; shoes and pocket squares are additional.



SCAN ME
for additional images

MICHAEL KORS

Black Performance Stretch Wedding Suit Style 421



SLIM FIT
Contemporary styling with a slimming appearance.

Size Scale: A2 - see page 57

Men's coat sizes: 34-74

Boys' coat sizes: 3-18

921 pant sizes: 18-71

Features:

- ▶ Tailored to fit all body types
- ▶ CoolMax® performance stretch fabric
- ▶ Self-framed notch lapel, side-vented, 29½" length
- ▶ Shown with slim fit pants with belt loops and buttons to accommodate suspenders



Fabric Content:

CoolMax®/
Sorona®/Wool

To order ensemble as shown:

Coat	421
Slim Fit Pants	921
Shirt (upcharge)	96W
Tie	WXRW
Fullback Vest	F921
Jewelry	BLACK
Formal Shoes (upcharge)	BXS
Pocket Square (purchase only)	PWRW
Belt (purchase only)	NBLT

Black Pant Options:

Slim Fit Pants	921
Modern Fit Pants	920



SCAN ME
for additional images



To BUY see page 9 in the JFW For Purchase Catalog

AVAILABLE WITH
MODERN OR
SLIM FIT PANTS



To BUY see page 7 in the JFW For Purchase Catalog

AVAILABLE WITH
MODERN OR
SLIM FIT PANTS



MICHAEL KORS

Tan Performance Stretch Wedding Suit Style 272



SLIM FIT
Contemporary styling with a slimming appearance.

Size Scale: A2 - see page 57

Men's coat sizes: 34-74

Boys' coat sizes: 3-18

272 pant sizes: 18-71

Features:

- ▶ Tailored to fit all body types
- ▶ CoolMax® performance stretch fabric
- ▶ Self-framed notch lapel, side-vented, 29½" length
- ▶ Shown with slim fit pants with belt loops and buttons to accommodate suspenders



Fabric Content:

CoolMax®/
Sorona®/Wool

To order ensemble as shown:

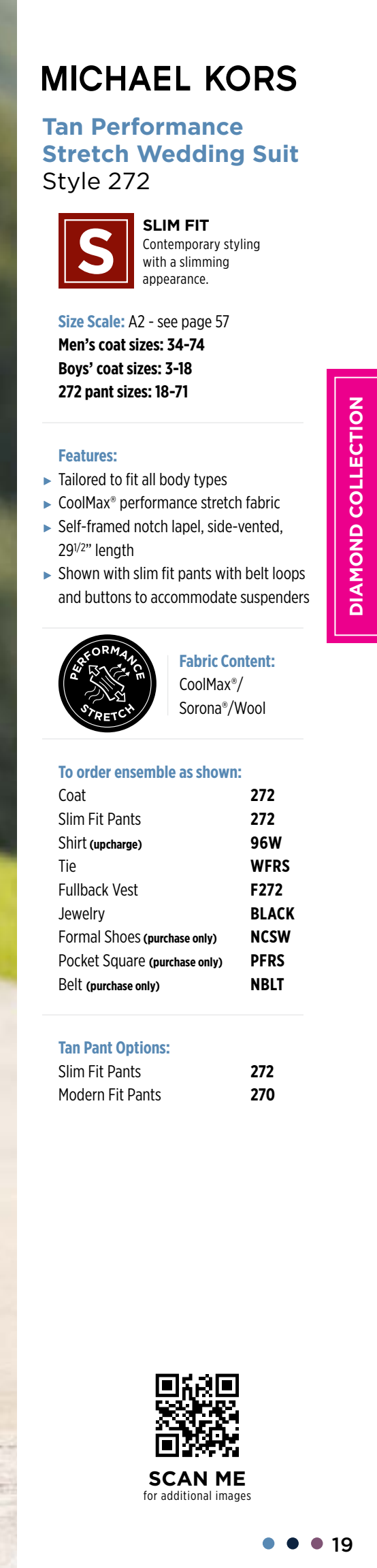
Coat	272
Slim Fit Pants	272
Shirt (upcharge)	96W
Tie	WFRS
Fullback Vest	F272
Jewelry	BLACK
Formal Shoes (purchase only)	NCSW
Pocket Square (purchase only)	PFRS
Belt (purchase only)	NBLT

Tan Pant Options:

Slim Fit Pants	272
Modern Fit Pants	270



SCAN ME
for additional images



DIAMOND COLLECTION

DIAMOND COLLECTION

MICHAEL KORS

Navy Performance Stretch Tuxedo Style 311



SLIM FIT
Contemporary styling with a slimming appearance.

Size Scale: A2 - see page 57

Men's coat sizes: 34-74

Boys' coat sizes: 3-18

311 pant sizes: 18-71

Features:

- ▶ Tailored to fit all body types
- ▶ CoolMax® performance stretch fabric
- ▶ Black satin peak lapel, side-vented, 29 1/2" length
- ▶ Black satin double besom pockets and button
- ▶ Shown with slim fit pants with belt loops and buttons to accommodate suspenders



Fabric Content:

CoolMax®/
Sorona®/Wool

To order ensemble as shown:

Coat	311
Slim Fit Pants	311
Shirt (upcharge)	96W
Tie	BTDS
Fullback Vest	F311
Jewelry	BLACK
Formal Shoes (purchase only)	NBNL
Pocket Square (purchase only)	PWWH
Belt (purchase only)	NLGB

Navy Pant Option:

Slim Fit Pants **311**

Black Pant Options:

Slim Fit Pants **921**
Modern Fit Pants **920**



SCAN ME
for additional images



To BUY see page 8 in the
JFW For Purchase Catalog

**AVAILABLE WITH
MODERN OR
SLIM FIT PANTS**



MICHAEL KORS

Milan Performance Stretch Tuxedo Style 931



SLIM FIT
Contemporary styling with a slimming appearance.

Size Scale: A2 - see page 57

Men's coat sizes: 34-74

Boys' coat sizes: 3-18

921 pant sizes: 18-71

Features:

- ▶ Tailored to fit all body types
- ▶ CoolMax® performance stretch fabric
- ▶ Satin peak lapel, side-vented, 29 3/4" length
- ▶ Shown with slim fit pants with belt loops and buttons to accommodate suspenders



Fabric Content:

CoolMax®/
Sorona®/Wool

To order ensemble as shown:

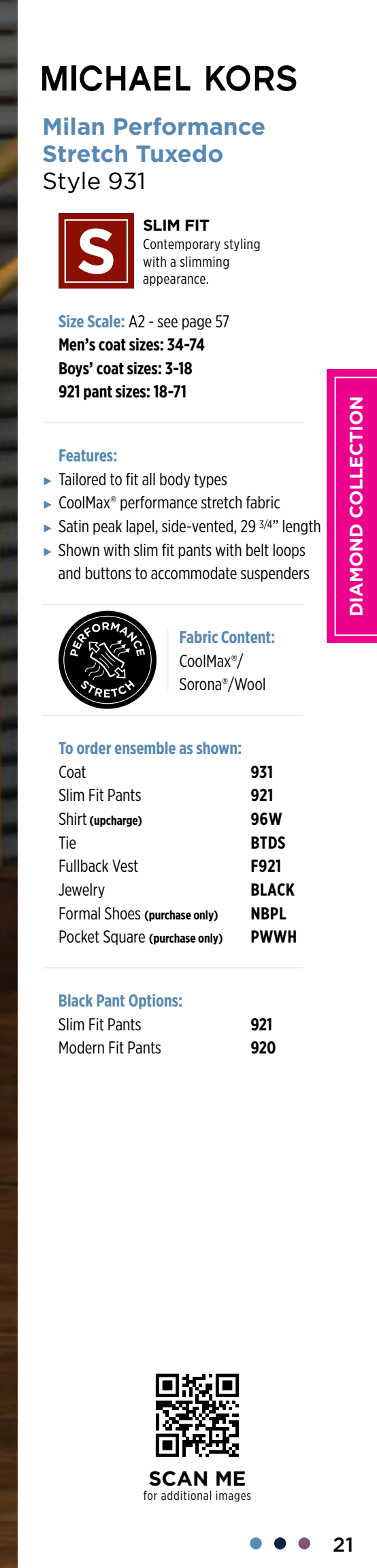
Coat	931
Slim Fit Pants	921
Shirt (upcharge)	96W
Tie	BTDS
Fullback Vest	F921
Jewelry	BLACK
Formal Shoes (purchase only)	NBPL
Pocket Square (purchase only)	PWWH

Black Pant Options:

Slim Fit Pants **921**
Modern Fit Pants **920**



SCAN ME
for additional images



DIAMOND COLLECTION

MICHAEL KORS

Force Performance Stretch Tuxedo Style 981



SLIM FIT
Contemporary styling with a slimming appearance.

Size Scale: A2 - see page 57
Men's coat sizes: 34-74
Boys' coat sizes: 3-18
921 pant sizes: 18-71

Features:

- ▶ Tailored to fit all body types
- ▶ CoolMax® performance stretch fabric
- ▶ Grosgrain notch lapel, side-vented, 29½" length
- ▶ Grosgrain trimmed pockets and covered buttons
- ▶ Shown with slim fit pants with belt loops and buttons to accommodate suspenders



Fabric Content:
CoolMax®/
Sorona®/Wool

To order ensemble as shown:

Coat	981
Slim Fit Pants	921
Shirt (purchase only)	N91W
Tie	B981
Fullback Vest	F921
Jewelry	BLACK
Formal Shoes (purchase only)	NBNL
Pocket Square (purchase only)	PWWH
Belt (purchase only)	NILB

Black Pant Options:

Slim Fit Pants	921
Modern Fit Pants	920



SCAN ME
for additional images

AVAILABLE WITH
MODERN OR
SLIM FIT PANTS



To BUY see page 11 in the
JFW For Purchase Catalog



MICHAEL KORS

Blue Performance Stretch Wedding Suit Style 302



SLIM FIT
Contemporary styling with a slimming appearance.

Size Scale: A2 - see page 57
Men's coat sizes: 34-74
Boys' coat sizes: 3-18
302 pant sizes: 18-71

Features:

- ▶ Tailored to fit all body types
- ▶ CoolMax® performance stretch fabric
- ▶ Self-framed notch lapel, side-vented, 30½" length
- ▶ Shown with slim fit pants with belt loops and buttons to accommodate suspenders



Fabric Content:
CoolMax®/
Sorona®/Wool

To order ensemble as shown:

Coat	302
Slim Fit Pants	302
Shirt (upcharge)	96W
Tie	WNMB
Fullback Vest	FNMB
Jewelry	BLACK
Formal Shoes (upcharge)	COP
Pocket Square (purchase only)	PNMB
Belt (purchase only)	NBLT

Blue Pant Option:

Slim Fit Pants	302
----------------	------------



SCAN ME
for additional images

DIAMOND COLLECTION

DIAMOND COLLECTION

MICHAEL KORS

Medium Grey Performance Stretch Wedding Suit Style 350

S **SLIM FIT**
Contemporary styling with a slimming appearance.

Size Scale: A2 - see page 57
Men's coat sizes: 34-74
Boys' coat sizes: 3-18
350 pant sizes: 18-71

Features:

- ▶ Tailored to fit all body types
- ▶ CoolMax® performance stretch fabric
- ▶ Self-framed notch lapel, side-vented, 29 1/2" length
- ▶ Shown with slim fit pants with belt loops and buttons to accommodate suspenders



Fabric Content:
CoolMax®/
Sorona®/Wool

To order ensemble as shown:

Coat	350
Slim Fit Pants	350
Shirt (upcharge)	96W
Tie	BNST
Fullback Vest	FNST
Jewelry	BLACK
Formal Shoes (upcharge)	COP
Pocket Square (purchase only)	PNST
Belt (purchase only)	NBLT

Medium Grey Pant Option:

Slim Fit Pants	350
----------------	------------



SCAN ME
for additional images



To BUY see page 12 in the JFW For Purchase Catalog



To BUY see page 14 in the JFW For Purchase Catalog



ALLURE MEN

Heather Grey Clayton Suit Style 262

S **SLIM FIT**
Contemporary styling with a slimming appearance.

Size Scale: A2 - see page 57
Men's coat sizes: 34-74
Boys' coat sizes: 3-18
262 pant sizes: 18-71

Features:

- ▶ Tailored to fit all body types
- ▶ Self-framed notch lapel, side-vented, 29 1/8" length
- ▶ Shown with slim fit pants with belt loops and buttons to accommodate suspenders

Fabric Content:
Super 130's Wool

To order ensemble as shown:

Coat	262
Slim Fit Pants	262
Shirt (upcharge)	96W
Tie	BXNA
Fullback Vest	F262
Jewelry	BLACK
Formal Shoes (upcharge)	CXS
Pocket Square (purchase only)	PWNA
Belt (purchase only)	NBLT

Heather Grey Pant Option:

Slim Fit Pants	262
----------------	------------



SCAN ME
for additional images

DIAMOND COLLECTION

ALLURE MEN

Sand Brunswick Suit Style 202

S **SLIM FIT**
Contemporary styling
with a slimming
appearance.

Size Scale: B - see page 57
Men's coat sizes: 34-66
Boys' coat sizes: 3-18
202 pant sizes: 18-65

Features:

- ▶ Tailored to fit all body types
- ▶ Self-framed notch lapel, side-vented, 30" length
- ▶ Shown with slim fit pants with belt loops and buttons to accommodate suspenders

Fabric Content:

60/40 Super 130's Wool Blend

To order ensemble as shown:

Coat	202
Slim Fit Pants	202
Shirt (upcharge)	96W
Tie	WFWI
Fullback Vest	F202
Jewelry	BLACK
Formal Shoes (upcharge)	COP
Pocket Square (purchase only)	PFWI
Belt (purchase only)	NBLT

Sand Pant Option:

Slim Fit Pants	202
----------------	------------



SCAN ME
for additional images



I K E EVENING

BY KE BEHAR

Hunter Green Luka Suit Style 222

S **SLIM FIT**
Contemporary styling
with a slimming
appearance.

Size Scale: A2 - see page 57
Men's coat sizes: 34-74
Boys' coat sizes: 3-18
222 pant sizes: 18-71

Features:

- ▶ Tailored to fit all body types
- ▶ Pick-stitched, self notch lapel, side-vented, flap pockets, 29³/₄" length
- ▶ Shown with slim fit pants with belt loops

Fabric Content:

100% Wool

To order ensemble as shown:

Coat	222
Slim Fit Pants	222
Shirt (upcharge)	96W
Tie	BLMU
Fullback Vest	F222
Jewelry	BLACK
Formal Shoes (upcharge)	COP
Pocket Square (purchase only)	PLMU
Belt (purchase only)	NILT

Hunter Green Pant Option:

Slim Fit Pants	222
----------------	------------



SCAN ME
for additional images



DIAMOND COLLECTION

DIAMOND COLLECTION

MICHAEL KORS

Navy Sterling Wedding Suit Style 371



SLIM FIT
Contemporary styling with a slimming appearance.

Size Scale: E - see page 57

Men's coat sizes: 34-44

Boys' coat sizes: N/A

371 pant sizes: 27-44

Features:

- ▶ Self-framed notch lapel, side-vented, 30¹/₂" length
- ▶ Shown with slim fit pants with belt loops and buttons to accommodate suspenders

Fabric Content:

Venetian Super 130's Wool

Companion Coat:

Style 372 - Navy Sterling Modern Fit Wedding Suit; see page 29

To order ensemble as shown:

Coat	371
Slim Fit Pants	371
Shirt (upcharge)	96W
Tie	BNNA
Fullback Vest	F372
Jewelry	BLACK
Formal Shoes (upcharge)	CXS
Pocket Square (purchase only)	PWWH
Belt (purchase only)	NBLT

Navy Pant Options:

Slim Fit Pants	371
Modern Fit Pants	372



SCAN ME
for additional images



AVAILABLE IN
TWO FITS:
SLIM FIT
Shown
MODERN FIT
See page 29



To BUY see page 10 in the JFW For Purchase Catalog

AVAILABLE IN
TWO FITS:
MODERN FIT
Shown
SLIM FIT
See page 28



MICHAEL KORS

Navy Sterling Wedding Suit Style 372



MODERN FIT
Fashion-forward styling with a flattering appearance.

Size Scale: B - see page 57

Men's coat sizes: 34-66

Boys' coat sizes: 3-18

372 pant sizes: 18-65

Features:

- ▶ Self-framed notch lapel, side-vented, 30¹/₂" length
- ▶ Shown with modern fit pants with belt loops and buttons to accommodate suspenders

Fabric Content:

Venetian Super 130's Wool

Companion Coat:

Style 371 - Navy Sterling Slim Fit Wedding Suit; see page 28

To order ensemble as shown:

Coat	372
Modern Fit Pants	372
Shirt (upcharge)	96W
Tie	WXFB
Fullback Vest	F372
Jewelry	BLACK
Formal Shoes (purchase only)	NMCS
Pocket Square (purchase only)	PWFB
Belt (purchase only)	NLGT

Navy Pant Options:

Slim Fit Pants	371
Modern Fit Pants	372



SCAN ME
for additional images

DIAMOND COLLECTION

DIAMOND COLLECTION

MICHAEL KORS

Steel Grey Sterling Wedding Suit Style 391



SLIM FIT
Contemporary styling with a slimming appearance.

Size Scale: E - see page 57

Men's coat sizes: 34-44

Boys' coat sizes: N/A

391 pant sizes: 27-44

Features:

- ▶ Self-framed notch lapel, side-vented, 30¹/₂" length
- ▶ Shown with slim fit pants with belt loops and buttons to accommodate suspenders

Fabric Content:

Venetian Super 130's Wool

Companion Coat:

Style 392 - Steel Grey Sterling Modern Fit Wedding Suit; see page 31

To order ensemble as shown:

Coat	391
Slim Fit Pants	391
Shirt (upcharge)	96W
Tie	WNWI
Fullback Vest	F392
Jewelry	BLACK
Formal Shoes (upcharge)	CXS
Pocket Square (purchase only)	PNWI
Belt (purchase only)	NBLT

Steel Grey Pant Options:

Slim Fit Pants	391
Modern Fit Pants	392



SCAN ME
for additional images

AVAILABLE IN
TWO FITS:

SLIM FIT
Shown

MODERN FIT
See page 31



To BUY see page 13 in the
JFW For Purchase Catalog

MICHAEL KORS

Steel Grey Sterling Wedding Suit Style 392



MODERN FIT
Fashion-forward styling with a flattering appearance.

Size Scale: B - see page 57

Men's coat sizes: 34-66

Boys' coat sizes: 3-18

392 pant sizes: 18-65

Features:

- ▶ Self-framed notch lapel, side-vented, 30¹/₂" length
- ▶ Shown with modern fit pants with belt loops and buttons to accommodate suspenders

Fabric Content:

Venetian Super 130's Wool

Companion Coat:

Style 391 - Steel Grey Sterling Slim Fit Wedding Suit; see page 30

To order ensemble as shown:

Coat	392
Modern Fit Pants	392
Shirt (upcharge)	96W
Tie	WFDL
Fullback Vest	F392
Jewelry	BLACK
Formal Shoes (purchase only)	NMCS
Pocket Square (purchase only)	PFDL
Belt (purchase only)	NLGT

Steel Grey Pant Options:

Slim Fit Pants	391
Modern Fit Pants	392



SCAN ME
for additional images

AVAILABLE IN
TWO FITS:

MODERN FIT
Shown

SLIM FIT
See page 30



DIAMOND COLLECTION

DIAMOND COLLECTION

MICHAEL KORS

Berkeley Tuxedo Style 990



MODERN FIT
Fashion-forward styling with a flattering appearance.

Size Scale: B - see page 57
Men's coat sizes: 34-66
Boys' coat sizes: 3-18
990 pant sizes: 18-65

Features:

- ▶ Grosgrain notch lapel, side-vented, 30 1/2" length
- ▶ Grosgrain trimmed pockets
- ▶ Shown with modern fit pants with grosgrain piping on the leg

Fabric Content:

Venetian Super 130's Wool

To order ensemble as shown:

Coat	990
Modern Fit Pants	990
Shirt (upcharge)	96W
Tie	BXBL
Fullback Vest	F900
Jewelry	BLACK
Formal Shoes (upcharge)	BDS
Pocket Square (purchase only)	PWWH

Black Pant Options:

Slim Fit Pants	991
Modern Fit Pants	990



SCAN ME
for additional images



AVAILABLE WITH
MODERN OR
SLIM FIT PANTS

KENNETH COLE

Burgundy Empire Tuxedo Style 201



SLIM FIT
Contemporary styling with a slimming appearance.

Size Scale: D - see page 57
Men's coat sizes: 34-60
Boys' coat sizes: 3-18
991 pant sizes: 18-59

Features:

- ▶ Tailored to fit all body types
- ▶ Black satin peak lapel, side-vented, 30 1/2" length
- ▶ Black satin double besom pockets
- ▶ Shown with black slim fit pants with no stripe

Fabric Content:

Super 120's Wool

To order ensemble as shown:

Coat	201
Slim Fit Pants	991
Shirt (upcharge)	96W
Tie	BSAT
Jewelry	BLACK
Formal Shoes (upcharge)	BDS
Pocket Square (purchase only)	PWWH

Black Pant Options:

Slim Fit Pants	991
Modern Fit Pants	990



SCAN ME
for additional images

DIAMOND COLLECTION

DIAMOND COLLECTION

**Cobalt Blue
Tribeca Tuxedo**
Style 211

S **SLIM FIT**
Contemporary styling
with a slimming
appearance.

Size Scale: D - see page 57
Men's coat sizes: 34-60
Boys' coat sizes: 3-18
211 pant sizes: 18-59

- Features:**
- ▶ Tailored to fit all body types
 - ▶ Black satin peak lapel, side-vented, 30" length
 - ▶ Black satin double besom pockets
 - ▶ Shown with slim fit pants with no stripe

Fabric Content:
Super 120's Wool

To order ensemble as shown:

Coat	211
Slim Fit Pants	211
Shirt (upcharge)	96W
Tie	BXBL
Fullback Vest	EXBL
Jewelry	BLACK
Formal Shoes (upcharge)	BDS
Pocket Square (purchase only)	PWWH

Cobalt Blue Pant Option:

Slim Fit Pants **211**

Black Pant Options:

Slim Fit Pants **991**
Modern Fit Pants **990**



SCAN ME
for additional images



**Indigo Blue
Lane Tuxedo**
Style 221

S **SLIM FIT**
Contemporary styling
with a slimming
appearance.

Size Scale: B - see page 57
Men's coat sizes: 34-66
Boys' coat sizes: 3-18
221 pant sizes: 18-65

- Features:**
- ▶ Tailored to fit all body types
 - ▶ Satin-edged peak lapel, side-vented, 29 1/4" length
 - ▶ Shown with slim fit pants with no stripe

Fabric Content:
Super 120's Wool

To order ensemble as shown:

Coat	221
Slim Fit Pants	221
Shirt (upcharge)	96W
Tie	BXCP
Fullback Vest	EXCP
Jewelry	BLACK
Formal Shoes (upcharge)	CXS
Pocket Square (purchase only)	PWCP

Indigo Blue Pant Option:

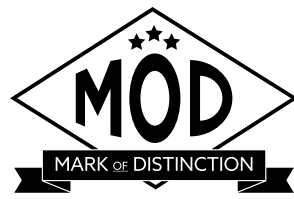
Slim Fit Pants **221**



SCAN ME
for additional images

DIAMOND COLLECTION

DIAMOND COLLECTION



Granite Aries Paisley Tuxedo Style 192

S **SLIM FIT**
Contemporary styling with a slimming appearance.

Size Scale: G - see page 57
Men's coat sizes: 34-66 (even sizes only)
Boys' coat sizes: 3-18 (even sizes only)
921 pant sizes: 18-71

- Features:**
- ▶ Black satin shawl lapel, side-vented, 30 1/2" length
 - ▶ Fabric covered buttons
 - ▶ Shown with slim fit pants with belt loops and buttons to accommodate suspenders

Fabric Content:
100% Polyester

To order ensemble as shown:

Coat	192
Slim Fit Pants	921
Shirt (upcharge)	96W
Tie	BSAT
Jewelry	BLACK
Formal Shoes (purchase only)	NBPL
Pocket Square (purchase only)	PWWH

Black Pant Options:

Euro Slim Pants (purchase only)	N11P
Slim Fit Pants	921
Modern Fit Pants	920



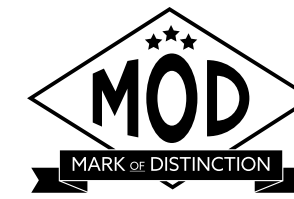
SCAN ME
for additional images



To BUY see page 33 in the JFW For Purchase Catalog



To BUY see page 32 in the JFW For Purchase Catalog



Black Aries Paisley Tuxedo Style 182

S **SLIM FIT**
Contemporary styling with a slimming appearance.

Size Scale: G - see page 57
Men's coat sizes: 34-66 (even sizes only)
Boys' coat sizes: 3-18 (even sizes only)
N11P pant sizes: 26-44 (even sizes only)

- Features:**
- ▶ Black satin shawl lapel, side-vented, 30 1/2" length
 - ▶ Fabric covered buttons
 - ▶ Shown with Black Euro Slim Stretch Suit Pants for purchase

Fabric Content:
100% Polyester

To order ensemble as shown:

Coat	182
Euro Slim Pants (purchase only)	N11P
Shirt (upcharge)	96W
Tie	BSAT
Jewelry	BLACK
Formal Shoes (purchase only)	NBSKS
Pocket Square (purchase only)	PWWH

Black Pant Options:

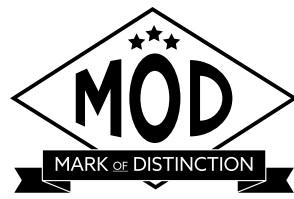
Euro Slim Pants (purchase only)	N11P
Slim Fit Pants	921
Modern Fit Pants	920



SCAN ME
for additional images



DIAMOND COLLECTION



Apple Red Aries Paisley Tuxedo Style 122

S **SLIM FIT**
Contemporary styling
with a slimming
appearance.

Size Scale: F - see page 57
Men's coat sizes: 34-50 (even sizes only)
Boys' coat sizes: 14-18 (even sizes only)
921 pant sizes: 18-71

- Features:**
- ▶ **Limited size scale**
 - ▶ Black satin shawl lapel, side-vented, 30 1/2" length
 - ▶ Fabric covered buttons
 - ▶ Shown with slim fit pants with belt loops and buttons to accommodate suspenders

Fabric Content:
100% Polyester

To order ensemble as shown:

Coat	122
Slim Fit Pants	921
Shirt (upcharge)	96B
Tie	BSAT
Jewelry	BLACK
Formal Shoes (upcharge)	BDS
Pocket Square (purchase only)	PWBL

Black Pant Options:

Euro Slim Pants (purchase only)	N11P
Slim Fit Pants	921
Modern Fit Pants	920

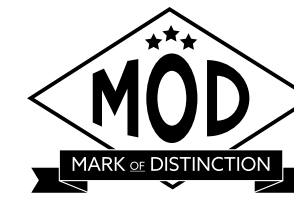


SCAN ME
for additional images

**LIMITED
SIZE SCALE**



**LIMITED
SIZE SCALE**



Cobalt Aries Paisley Tuxedo Style 132

S **SLIM FIT**
Contemporary styling
with a slimming
appearance.

Size Scale: F - see page 57
Men's coat sizes: 34-50 (even sizes only)
Boys' coat sizes: 14-18 (even sizes only)
921 pant sizes: 18-71

- Features:**
- ▶ **Limited size scale**
 - ▶ Black satin shawl lapel, side-vented, 30 1/2" length
 - ▶ Fabric covered buttons
 - ▶ Shown with slim fit pants with belt loops and buttons to accommodate suspenders

Fabric Content:
100% Polyester

To order ensemble as shown:

Coat	132
Slim Fit Pants	921
Shirt (upcharge)	96B
Tie	BSAT
Jewelry	BLACK
Formal Shoes (purchase only)	NBSKS
Pocket Square (purchase only)	PWBL

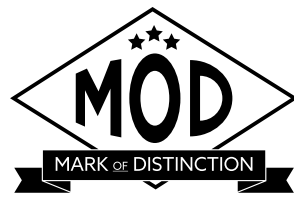
Black Pant Options:

Euro Slim Pants (purchase only)	N11P
Slim Fit Pants	921
Modern Fit Pants	920



SCAN ME
for additional images

DIAMOND COLLECTION



White/Silver Aries Paisley Tuxedo
Style 172

S **SLIM FIT**
Contemporary styling with a slimming appearance.

Size Scale: F - see page 57
Men's coat sizes: 34-50 (even sizes only)
Boys' coat sizes: 14-18 (even sizes only)
N17P pant sizes: 26-44 (even sizes only)

Features:

- ▶ **Limited size scale**
- ▶ White satin shawl lapel, side-vented, 30 1/2" length
- ▶ Fabric covered buttons
- ▶ Shown with White Euro Slim Stretch Suit Pants for purchase

Fabric Content:
100% Polyester

To order ensemble as shown:

Coat	172
Euro Slim Pants (purchase only)	N17P
Shirt (upcharge)	96W
Tie	WFPT
Jewelry	WHITE
Formal Shoes (purchase only)	NCSW
Pocket Square (purchase only)	PFPT

White Pant Options:

Euro Slim Pants (purchase only)	N17P
Modern Fit Pants	750

Black Pant Options:

Euro Slim Pants (purchase only)	N11P
Slim Fit Pants	921
Modern Fit Pants	920



SCAN ME
for additional images



RENT OR BUY

To BUY see page 31 in the JFW For Purchase Catalog

LIMITED SIZE SCALE

DIAMOND COLLECTION



AVAILABLE WITH MODERN OR SLIM FIT PANTS

Tan Havana Suit
Style 252

M **MODERN FIT**
Fashion-forward styling with a flattering appearance.

Size Scale: B2 - see page 57
Men's coat sizes: 34-66
Boys' coat sizes: 3-18
252 pant sizes: 18-65

Features:

- ▶ Self notch lapel, bone buttons, side-vented, 30" length
- ▶ Shown with modern fit pants with no stripe

Fabric Content:

Ultra Fine Poly / Wool Blend

To order ensemble as shown:

Coat	252
Modern Fit Pants	252
Shirt (upcharge)	96W
Tie	WRCP
Fullback Vest	F252
Jewelry	BLACK
Formal Shoes (upcharge)	CXS
Pocket Square (purchase only)	PKWH

Tan Pant Options:

Slim Fit Pants	251
Modern Fit Pants	252

PLATINUM COLLECTION



stephengeoffrey

Emerson Tuxedo Style 852



MODERN FIT
Fashion-forward styling with a flattering appearance.

Size Scale: H - see page 57

Men's coat sizes: 34-56

Boys' coat sizes: 14-18

850 pant sizes: 18-71

Features:

- ▶ **Limited size scale**
- ▶ Grosgrain notch lapel, non-vented, 3 1/2" length
- ▶ Grosgrain buttons
- ▶ Shown with modern fit pants with a beaded stripe

Fabric Content:

100% Tropical Worsted Wool

To order ensemble as shown:

Coat	852
Modern Fit Pants	850
Shirt (upcharge)	96W
Tie	WKLA
Fullback Vest	HRLA
Jewelry	BLACK
Formal Shoes (upcharge)	BDS
Pocket Square (purchase only)	PKLA

Black Pant Option:

Modern Fit Pants	850
------------------	------------



**LIMITED
SIZE SCALE**



stephengeoffrey

Cyprus Tuxedo Style 822



MODERN FIT
Fashion-forward styling with a flattering appearance.

Size Scale: B2 - see page 57

Men's coat sizes: 34-66

Boys' coat sizes: 3-18

850 pant sizes: 18-71

Features:

- ▶ Satin shawl lapel, non-vented, 3 1/2" length
- ▶ Shown with modern fit pants with a beaded stripe

Fabric Content:

100% Tropical Worsted Wool

To order ensemble as shown:

Coat	822
Modern Slim Fit Pants	850
Shirt (upcharge)	96W
Tie	WXRA
Fullback Vest	EXRA
Jewelry	BLACK
Formal Shoes (upcharge)	BDS
Pocket Square (purchase only)	PWRA

Black Pant Option:

Modern Fit Pants	850
------------------	------------



PLATINUM COLLECTION

PLATINUM COLLECTION



stephengeoffrey

Black Troy Tuxedo Style 802



MODERN FIT
Fashion-forward styling with a flattering appearance.

Size Scale: H - see page 57
Men's coat sizes: 34-56
Boys' coat sizes: 14-18
850 pant sizes: 18-71

Features:

- ▶ **Limited size scale**
- ▶ Satin notch lapel, non-vented, 31 1/2" length
- ▶ Shown with modern fit pants with a beaded stripe

Fabric Content:

100% Worsted Wool

To order ensemble as shown:

Coat	802
Modern Fit Pants	850
Shirt (upcharge)	96W
Tie	WRCO
Fullback Vest	HRCO
Jewelry	BLACK
Formal Shoes (upcharge)	BDS
Pocket Square (purchase only)	PKCO

Black Pant Option:

Modern Fit Pants	850
------------------	------------

LIMITED
SIZE SCALE



stephengeoffrey

White Troy Tuxedo Style 712



MODERN FIT
Fashion-forward styling with a flattering appearance.

Size Scale: B - see page 57
Men's coat sizes: 34-66
Boys' coat sizes: 3-18
750 pant sizes: 18-65

Features:

- ▶ Satin notch lapel, non-vented, 31 1/2" length
- ▶ Shown with modern fit pants with a beaded stripe

Fabric Content:

100% Polyester

To order ensemble as shown:

Coat	712
Modern Fit Pants	750
Shirt (upcharge)	96W
Tie	BXWH
Fullback Vest	EXWH
Jewelry	WHITE
Formal Shoes (upcharge)	WAS
Pocket Square (purchase only)	PWWH

White Pant Option:

Modern Fit Pants	750
------------------	------------



PLATINUM COLLECTION

PLATINUM COLLECTION

Waverly Tuxedo
Style 751

S **SLIM FIT**
Contemporary styling with a slimming appearance.

Size Scale: D - see page 57
Men's coat sizes: 34-60
Boys' coat sizes: 3-18
991 pant sizes: 18-59

Features:

- ▶ Tailored to fit all body types
- ▶ Self shawl lapel edged in black satin, center-vented, 30" length
- ▶ Shown with black slim fit pants with no stripe

Fabric Content:
100% Polyester

To order ensemble as shown:

Coat	751
Slim Fit Pants	991
Shirt (upcharge)	96W
Tie	BXBL
Fullback Vest	EXBL
Jewelry	BLACK
Formal Shoes (upcharge)	BDS
Pocket Square (purchase only)	PWBL

White Pant Option:

Modern Fit Pants	750
------------------	------------

Black Pant Options:

Slim Fit Pants	991
Modern Fit Pants	850



RENT OR BUY

To BUY see page 17 in the JFW For Purchase Catalog



Ivory Classic Shawl Tuxedo
Style 601

M **MODERN FIT**
Fashion-forward styling with a flattering appearance.

Size Scale: B - see page 57
Men's coat sizes: 34-66
Boys' coat sizes: 3-18
991 pant sizes: 18-59

Features:

- ▶ Self shawl lapel, side-vented, 30 1/2" length
- ▶ Shown with black slim fit pants with no stripe

Fabric Content:
100% Polyester

To order ensemble as shown:

Coat	601
Slim Fit Pants	991
Shirt (upcharge)	96W
Tie	BSAT
Sash	CUMB
Jewelry	BLACK
Formal Shoes (upcharge)	BDS
Pocket Square (purchase only)	PWBL

Ivory Pant Option:

Modern Fit Pants	650
------------------	------------

Black Pant Options:

Slim Fit Pants	991
Modern Fit Pants	850

PLATINUM COLLECTION

PLATINUM COLLECTION



stephengeoffrey

Ivory Troy Tuxedo Style 602



MODERN FIT
Fashion-forward styling with a flattering appearance.

Size Scale: B2 - see page 57

Men's coat sizes: 34-66

Boys' coat sizes: 3-18

650 pant sizes: 18-65

Features:

- ▶ Satin notch lapel, non-vented, 3 1/2" length
- ▶ Shown with modern fit pants with a beaded stripe

Fabric Content:

100% Polyester

To order ensemble as shown:

Coat	602
Modern Fit Pants	650
Shirt (upcharge)	96W
Tie	WRGO
Fullback Vest	HRGO
Jewelry	BLACK
Formal Shoes (upcharge)	COP
Pocket Square (purchase only)	PKGO

Ivory Pant Option:

Modern Fit Pants **650**



Classic Notch Tuxedo Style 820



TRADITIONAL FIT
A classic, fuller cut tuxedo.

Size Scale: A - see page 57;
expanded sizes available

Men's coat sizes: 34-74

Boys' coat sizes: 2-18

850 pant sizes: 18-71

Features:

- ▶ Satin notch lapel, non-vented, 3 1/2" length
- ▶ Shown with modern fit pants with a beaded stripe

Fabric Content:

100% Worsted Wool

To order ensemble as shown:

Coat	820
Modern Fit Pants	850
Shirt	85W
Tie	BSAT
Sash	CUMB
Jewelry	BLACK
Formal Shoes (upcharge)	BDS
Pocket Square (purchase only)	PWWH

Black Pant Option:

Modern Fit Pants **850**

PLATINUM COLLECTION

GOLD COLLECTION

White Classic Shawl Tuxedo
Style 701



MODERN FIT
Fashion-forward styling with a flattering appearance.

Size Scale: B2 - see page 57

Men's coat sizes: 34-66

Boys' coat sizes: 3-18

850 pant sizes: 18-71

Features:

- ▶ Self shawl lapel, flap pockets, non-vented, 30" length
- ▶ Shown with black modern fit pants with a beaded stripe

Fabric Content:

100% Polyester

To order ensemble as shown:

Coat	701
Modern Fit Pants	850
Shirt	85W
Tie	BSAT
Sash	CUMB
Jewelry	BLACK
Formal Shoes (upcharge)	BDS
Pocket Square (purchase only)	PWBL

White Pant Option:

Modern Fit Pants **750**

Black Pant Option:

Modern Fit Pants **850**



To BUY see page 17 in the JFW For Purchase Catalog



Classic Peak Fulldress Tuxedo
Style 588



TRADITIONAL FIT
A classic, fuller cut tuxedo.

Size Scale: D - see page 57

Men's coat sizes: 34-60

Boys' coat sizes: 3-18

850 pant sizes: 18-71

Features:

- ▶ Six-button fulldress styling
- ▶ Satin peak lapel, center-vented tail, 42" length
- ▶ Shown with modern fit pants with a beaded stripe

Fabric Content:

100% Tropical Worsted Wool

To order ensemble as shown:

Coat	588
Modern Fit Pants	850
Shirt	36W
Tie	BPIQ
Vest	VPIQ
Jewelry	WHITE
Formal Shoes (upcharge)	BDS
Pocket Square (purchase only)	PWWH

Black Pant Option:

Modern Fit Pants **850**



Classic Peak Tuxedo
Style 880

T **TRADITIONAL FIT**
A classic, fuller cut tuxedo.

Size Scale: A - see page 57;
expanded sizes available

Men's coat sizes: 34-74

Boys' coat sizes: 2-18

850 pant sizes: 18-71

Features:

- ▶ Satin peak lapel, center-vented, 31¹/₂" length
- ▶ Shown with modern fit pants with a beaded stripe

Fabric Content:

100% Worsted Wool

To order ensemble as shown:

Coat	880
Modern Fit Pants	850
Shirt	85W
Tie	BSAT
Sash	CUMB
Jewelry	BLACK
Formal Shoes (upcharge)	BDS
Pocket Square (purchase only)	PWWH

Black Pant Option:

Modern Fit Pants	850
------------------	------------



MEASURING TECHNIQUES

NO LOOSE MEASUREMENTS OR FINGERS UNDER THE MEASURING TAPE

Always record the customer's height & weight, as well as his fit preference (regular or tighter fit)



CHEST

- Lift arms
- Place tape around broadest part of chest
- Lower arms to side and relax
- Measure from side to ensure tape is level



OVERARM

- Arms relaxed by side
- Place tape around broadest part of chest and arms
- Measure from side to ensure tape is level



NECK

- Measure around neck where collar will button
- Do not place fingers under the tape
- Add 1" to measurement for neck size



HIP

- Remove items from pockets
- Stand to side and measure broadest part of hip and rear



PANT WAIST

- Measure where pants will be worn (1" under the navel is ideal)



PANT WAIST - WITH STOMACH

- Measure below the stomach if that's where the pants will be worn
- Pull tape snug for this measurement



STOMACH

- Measure widest part of customer's stomach
- Helps determine shirt and coat size on larger customers
- DO NOT record as the waist measurement

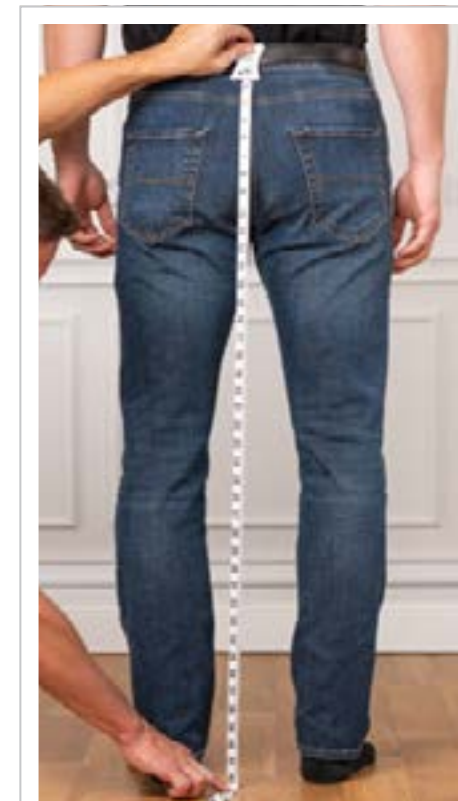
SIZING TIPS

PANT SIZING

- **Hip measurement** - 6 = smallest pant waist (Ex. 40" hip - 6" = 34" waist)

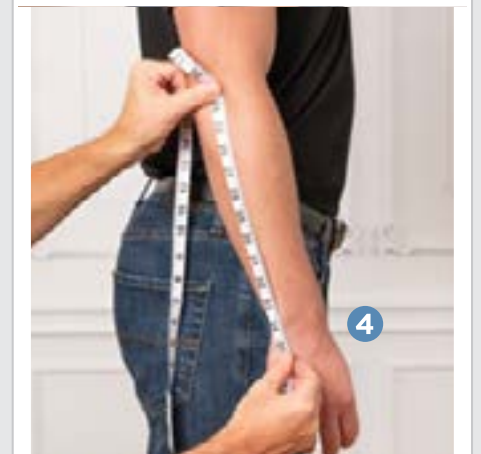
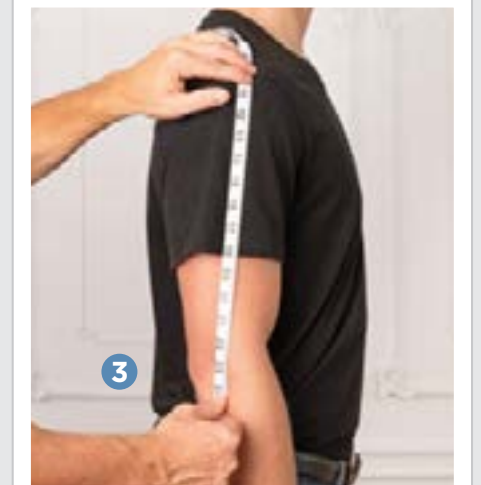
COAT SIZING

- **Slim Fit Coats**
 - Chest measurement + 1" - or - Overarm measurement - 8"
 - The LARGER number is the coat size
- **Modern Fit Coats**
 - Chest measurement - or - Overarm measurement - 9"
 - The LARGER number is the coat size



OUTSEAM

- Remove shoes and look straight ahead
- Measure from the back
- Start at top of waistband and measure to the floor
- Subtract 1" for a standard pant break



SHIRT SLEEVE

- 1 Measure from base of neck centered on spine
- 2 Measure over the top of shoulder
- 3 Measure to elbow
- 4 Measure to wrist bone and add 1"

COAT SIZING GUIDES

COAT	CHEST	OVERARM	WAIST	HIP	INSEAM	OUTSEAM	NECK	SLEEVE	HEIGHT	WEIGHT
34S	32 - 34	41 - 43	26 - 28	32 - 34	< 30.5	< 40.5	14 - 15.5	32 - 33	< 5' 8"	95 - 115
35S	33 - 35	42 - 44	27 - 29	33 - 35	< 30.5	< 40.5	14 - 15.5	32 - 33	< 5' 8"	105 - 125
36S	34 - 36	43 - 45	27 - 30	33 - 36	< 30.5	< 40.5	14 - 15.5	32 - 33	< 5' 8"	115 - 135
37S	35 - 37	44 - 46	28 - 31	34 - 37	< 30.5	< 40.5	14.5 - 15.5	32 - 33	< 5' 8"	125 - 145
38S	36 - 38	45 - 47	29 - 32	35 - 38	< 30.5	< 40.5	14.5 - 15.5	32 - 33	< 5' 8"	135 - 155
39S	37 - 39	46 - 48	30 - 33	36 - 39	< 30.5	< 40.5	15 - 16.5	32 - 33	< 5' 8"	145 - 165
40S	38 - 40	47 - 49	30 - 34	36 - 40	< 30.5	< 40.5	15 - 16.5	32 - 33	< 5' 8"	150 - 170
41S	39 - 41	48 - 50	31 - 35	37 - 41	< 30.5	< 40.5	15.5 - 16.5	32 - 33	< 5' 8"	155 - 175
42S	40 - 42	49 - 51	32 - 36	38 - 42	< 30.5	< 40.5	15.5 - 16.5	32 - 33	< 5' 8"	160 - 180
43S	41 - 43	50 - 52	33 - 37	39 - 43	< 30.5	< 40.5	16 - 17.5	32 - 33	< 5' 8"	170 - 190
44S	42 - 44	51 - 53	34 - 39	40 - 45	< 30.5	< 40.5	16 - 17.5	32 - 33	< 5' 8"	180 - 200
46S	44 - 46	53 - 55	36 - 41	42 - 47	< 30.5	< 40.5	16 - 17.5	32 - 33	< 5' 8"	190 - 215
48S	46 - 48	55 - 57	38 - 44	44 - 50	< 30.5	< 40.5	17 - 18.5	32 - 33	< 5' 8"	200 - 230
50S	48 - 50	57 - 59	40 - 46	46 - 52	< 30.5	< 40.5	17 - 18.5	32 - 33	< 5' 8"	210 - 250
52S	50 - 52	59 - 61	42 - 49	48 - 54	< 30.5	< 40.5	17 - 18.5	32 - 33	< 5' 8"	220 - 260
54S	52 - 54	61 - 63	44 - 51	50 - 56	< 30.5	< 40.5	18 - 19.5	32 - 33	< 5' 8"	230 - 270
56S	54 - 56	63 - 65	46 - 53	52 - 58	< 30.5	< 40.5	18 - 20.5	32 - 33	< 5' 8"	240 - 280
58S	56 - 58	65 - 67	48 - 55	54 - 60	< 30.5	< 40.5	18 - 20.5	32 - 33	< 5' 8"	250 - 290
60S	58 - 60	67 - 69	50 - 57	56 - 62	< 30.5	< 40.5	19 - 22.5	32 - 33	< 5' 8"	260 - 300

SHORT

COAT	CHEST	OVERARM	WAIST	HIP	INSEAM	OUTSEAM	NECK	SLEEVE	HEIGHT	WEIGHT
34R	32 - 34	41 - 43	26 - 28	32 - 34	29 - 33	39 - 43	14 - 15.5	34 - 35	5' 8" - 6'	105 - 125
35R	33 - 35	42 - 44	27 - 29	33 - 35	29 - 33	39 - 43	14 - 15.5	34 - 35	5' 8" - 6'	115 - 135
36R	34 - 36	43 - 45	27 - 30	33 - 36	29 - 33	39 - 43	14 - 15.5	34 - 35	5' 8" - 6'	125 - 145
37R	35 - 37	44 - 46	28 - 31	34 - 37	29 - 33	39 - 43	14.5 - 15.5	34 - 35	5' 8" - 6'	130 - 150
38R	36 - 38	45 - 47	29 - 32	35 - 38	29 - 33	39 - 43	14.5 - 15.5	34 - 35	5' 8" - 6'	140 - 160
39R	37 - 39	46 - 48	30 - 33	36 - 39	29 - 33	39 - 43	15 - 16.5	34 - 35	5' 8" - 6'	150 - 170
40R	38 - 40	47 - 49	30 - 34	36 - 40	29 - 33	39 - 43	15 - 16.5	34 - 35	5' 8" - 6'	160 - 180
41R	39 - 41	48 - 50	31 - 35	37 - 41	29 - 33	39 - 43	15.5 - 16.5	34 - 35	5' 8" - 6'	170 - 190
42R	40 - 42	49 - 51	32 - 36	38 - 42	29 - 33	39 - 43	15.5 - 16.5	34 - 35	5' 8" - 6'	175 - 195
43R	41 - 43	50 - 52	33 - 37	39 - 43	29 - 33	39 - 43	16 - 17.5	34 - 35	5' 8" - 6'	185 - 205
44R	42 - 44	51 - 53	34 - 40	40 - 45	29 - 33	39 - 43	16 - 17.5	34 - 35	5' 8" - 6'	195 - 215
46R	44 - 46	53 - 55	36 - 42	42 - 47	29 - 33	39 - 43	16.5 - 17.5	34 - 35	5' 8" - 6'	205 - 225
48R	46 - 48	55 - 57	38 - 44	44 - 50	29 - 33	39 - 43	17 - 18.5	34 - 35	5' 8" - 6'	220 - 240
50R	48 - 50	57 - 59	40 - 47	46 - 53	29 - 33	39 - 43	17 - 18.5	34 - 35	5' 8" - 6'	240 - 260
52R	50 - 52	59 - 61	42 - 49	48 - 54	29 - 33	39 - 43	17 - 18.5	34 - 35	5' 8" - 6'	260 - 275
54R	52 - 54	61 - 63	44 - 51	50 - 56	29 - 33	39 - 43	18 - 19.5	34 - 35	5' 8" - 6'	275 - 290
56R	54 - 56	63 - 65	46 - 53	52 - 58	29 - 33	39 - 43	18 - 20.5	34 - 35	5' 8" - 6'	290 - 300
58R	56 - 58	65 - 67	48 - 55	54 - 60	29 - 33	39 - 43	18 - 20.5	34 - 35	5' 8" - 6'	300 - 310
60R	58 - 60	67 - 69	50 - 57	56 - 62	29 - 33	39 - 43	19 - 22.5	34 - 35	5' 8" - 6'	310 - 330
62R	60 - 62	69 - 71	52 - 59	58 - 64	29 - 33	39 - 43	20 - 22.5	34 - 35	5' 8" - 6'	320 - 340
64R	62 - 64	71 - 73	54 - 61	60 - 66	29 - 33	39 - 43	21 - 24	34 - 35	5' 8" - 6'	340 - 350
66R	64 - 66	73 - 75	56 - 63	62 - 68	29 - 33	39 - 43	23 - 26	34 - 35	5' 8" - 6'	350 - 370
68R	66 - 68	75 - 77	58 - 65	64 - 70	29 - 33	39 - 43	23 - 26	34 - 35	5' 8" - 6'	370 - 390
70R	68 - 70	77 - 79	60 - 67	66 - 72	29 - 33	39 - 43	24 - 27	34 - 35	5' 8" - 6'	390 - 410
72R	70 - 72	79 - 81	62 - 69	68 - 74	29 - 33	39 - 43	24 - 27	34 - 35	5' 8" - 6'	410 - 430
74R	72 - 74	81 - 83	64 - 71	70 - 76	29 - 33	39 - 43	25 - 27	34 - 35	5' 8" - 6'	430 - 450

REGULAR

COAT SIZING GUIDES continued

COAT	CHEST	OVERARM	WAIST	HIP	INSEAM	OUTSEAM	NECK	SLEEVE	HEIGHT	WEIGHT
34L	32 - 34	41 - 43	26 - 28	32 - 34	33 - 35.5	43 - 45.5	14 - 15.5	36 - 37	6' - 6' 3"	115 - 135
35L	33 - 35	42 - 44	27 - 29	33 - 35	33 - 35.5	43 - 45.5	14 - 15.5	36 - 37	6' - 6' 3"	125 - 145
36L	34 - 36	43 - 45	27 - 30	33 - 36	33 - 35.5	43 - 45.5	14 - 15.5	36 - 37	6' - 6' 3"	135 - 155
37L	35 - 37	44 - 46	28 - 31	34 - 37	33 - 35.5	43 - 45.5	14.5 - 15.5	36 - 37	6' - 6' 3"	140 - 160
38L	36 - 38	45 - 47	29 - 32	35 - 38	33 - 35.5	43 - 45.5	14.5 - 15.5	36 - 37	6' - 6' 3"	150 - 175
39L	37 - 39	46 - 48	30 - 33	36 - 39	33 - 35.5	43 - 45.5	15 - 16.5	36 - 37	6' - 6' 3"	155 - 185
40L	38 - 40	47 - 49	30 - 34	36 - 40	33 - 35.5	43 - 45.5	15 - 16.5	36 - 37	6' - 6' 3"	160 - 185
41L	39 - 41	48 - 50	31 - 35	37 - 41	33 - 35.5	43 - 45.5	15.5 - 16.5	36 - 37	6' - 6' 3"	170 - 190
42L	40 - 42	49 - 51	32 - 36	38 - 42	33 - 35.5	43 - 45.5	15.5 - 16.5	36 - 37	6' - 6' 3"	175 - 200
43L	41 - 43	50 - 52	33 - 37	39 - 43	33 - 35.5	43 - 45.5	16 - 17.5	36 - 37	6' - 6' 3"	185 - 210
44L	42 - 44	51 - 53	34 - 40	40 - 45	33 - 35.5	43 - 45.5	16 - 17.5	36 - 37	6' - 6' 3"	200 - 225
46L	44 - 46	53 - 55	36 - 42	42 - 47	33 - 35.5	43 - 45.5	16.5 - 17.5	36 - 37	6' - 6' 3"	210 - 235
48L	46 - 48	55 - 57	38 - 44	44 - 50	33 - 35.5	43 - 45.5	17 - 18.5	36 - 37	6' - 6' 3"	220 - 245
50L	48 - 50	57 - 59	40 - 47	46 - 52	33 - 35.5	43 - 45.5	17 - 18.5	36 - 37	6' - 6' 3"	240 - 265
52L	50 - 52	59 - 61	42 - 49	48 - 54	33 - 35.5	43 - 45.5	17 - 18.5	36 - 37	6' - 6' 3"	250 - 275
54L	52 - 54	61 - 63	44 - 51	50 - 56	33 - 35.5	43 - 45.5	18 - 19.5	36 - 37	6' - 6' 3"	265 - 290
56L	54 - 56	63 - 65	46 - 53	52 - 58	33 - 35.5	43 - 45.5	18 - 20.5	36 - 37	6' - 6' 3"	280 - 305
58L	56 - 58	65 - 67	48 - 55	54 - 60	33 - 35.5	43 - 45.5	18 - 20.5	36 - 37	6' - 6' 3"	295 - 315
60L	58 - 60	67 - 69	50 - 57	56 - 62	33 - 35.5	43 - 45.5	19 - 22.5	36 - 37	6' - 6' 3"	305 - 330
62L	60 - 62	69 - 71	52 - 59	58 - 64	33 - 35.5	43 - 45.5	20 - 22.5	36 - 37	6' - 6' 3"	315 - 340
64L	62 - 64	71 - 73	54 - 61	60 - 66	33 - 35.5	43 - 45.5	21 - 24	36 - 37	6' - 6' 3"	325 - 350
66L	64 - 66	73 - 75	56 - 63	62 - 68	33 - 35.5	43 - 45.5	23 - 26	36 - 37	6' - 6' 3"	350 - 375
68L	66 - 68	75 - 77	58 - 65	64 - 70	33 - 35.5	43 - 45.5	23 - 26	36 - 37	6' - 6' 3"	370 - 390
70L	68 - 70	77 - 79	60 - 67	66 - 72	33 - 35.5	43 - 45.5	24 - 27	36 - 37	6' - 6' 3"	390 - 410
72L	70 - 72	79 - 81	62 - 69	68 - 74	33 - 35.5	43 - 45.5	24 - 27	36 - 37	6' - 6' 3"	410 - 430
74L	72 - 74	81 - 83	64 - 71	70 - 76	33 - 35.5	43 - 45.5	25 - 27	36 - 37	6' - 6' 3"	430 - 450

LONG

COAT	CHEST	OVERARM	WAIST	HIP	INSEAM	OUTSEAM	NECK	SLEEVE	HEIGHT	WEIGHT
38XL	36 - 38	45 - 47	28 - 32	34 - 38	> 35	> 44	15 - 16.5	38 - 39	> 6' 3"	155 - 180
39XL	37 - 39	46 - 48	30 - 33	36 - 39	> 35	> 44	15 - 16.5	38 - 39	> 6' 3"	160 - 185
40XL	38 - 40	47 - 49	30 - 34	36 - 40	> 35	> 44	15 - 16.5	38 - 39	> 6' 3"	165 - 190
42XL	40 - 42	49 - 51	32 - 36	38 - 42	> 35	> 44	15 - 16.5	38 - 39	> 6' 3"	180 - 205
44XL	42 - 44	51 - 53	34 - 40	40 - 46	> 35	> 44	16 - 17.5	38 - 39	> 6' 3"	200 - 230
46XL	44 - 46	53 - 55	36 - 42	42 - 48	> 35	> 44	16.5 - 17.5	38 - 39	> 6' 3"	215 - 240
48XL	46 - 48	55 - 57	38 - 44	44 - 50	> 35	> 44	17 - 18.5	38 - 39	> 6' 3"	230 - 270
50XL	48 - 50	57 - 59	40 - 46	46 - 52	> 35	> 44	17 - 18.5	38 - 39	> 6' 3"	240 - 290
52XL	50 - 52	59 - 61	42 - 48	48 - 54	> 35	> 44	17 - 18.5	38 - 39	> 6' 3"	250 - 300
54XL	52 - 54	61 - 63	44 - 51	50 - 56	> 35	> 44	18 - 19.5	38 - 39	> 6' 3"	230 - 270
56XL	54 - 56	63 - 65	46 - 53	52 - 58	> 35	> 44	18 - 20.5	38 - 39	> 6' 3"	240 - 280
58XL	56 - 58	65 - 67	48 - 55	54 - 60	> 35	> 44	18 - 20.5	38 - 39	> 6' 3"	250 - 290
60XL	58 - 60	67 - 69	50 - 57	56 - 62	> 35	> 44	19 - 22.5	38 - 39	> 6' 3"	260 - 300
62XL	60 - 62	69 - 71	52 - 59	58 - 64	> 35	> 44	20 - 22.5	38 - 39	> 6' 3"	270 - 310
64XL	62 - 64	71 - 73	54 - 61	60 - 66	> 35	> 44	21 - 24	38 - 39	> 6' 3"	280 - 320
66XL	64 - 66	73 - 75	56 - 63	62 - 68	> 35	> 44	23 - 26	38 - 39	> 6' 3"	290 - 330

X-LONG

Slim Fit Pants		
Pant Styles	Features	Waist Sizing
202	~	18-65
211	+	18-59
221	+	18-65
222	#	18-71
251	+	27-44
262</		

ADDITIONAL SIZING GUIDES

BOYS' FORMALWEAR MEASUREMENT GUIDE

Age / Size	Height	Chest	Waist	Inseam	Outseam	Sleeve	Shirt
2	36"	22.5"	17 - 18"	13"	20"	18"	10-10.5" x 20"
3	38"	23"	19 - 20"	15"	22"	19"	10-10.5" x 20"
4	42"	24"	20 - 21"	15.5"	23"	20"	10-10.5" x 20"
5	45"	25"	21 - 22"	16.5"	24"	21"	11-11.5" x 22"
6	48"	25.5"	22 - 23"	18"	25.5"	22"	11-11.5" x 22"
7	50"	26"	23" - 24"	19.5"	27"	23"	11-11.5" x 24"
8	52"	26.5"	24"	21"	29"	24"	11-11.5" x 24"
9	54"	27.5"	24 - 25"	22.5"	31"	25"	12-12.5" x 26"
10	55"	28"	25"	24.5"	33"	26"	12-12.5" x 26"
11	57"	28.5"	25 - 26"	25"	33.5"	27"	12-12.5" x 28"
12	59"	29.5"	26"	26"	35"	28"	12-12.5" x 28"
13	60"	30.5"	26 - 27"	26.5"	35.5"	29"	13-13.5" x 30"
14	62"	31"	26 - 27"	27.5"	36.5"	30"	13-13.5" x 30"
15	63"	31.5"	27 - 28"	28.5"	38"	31"	13-13.5" x 32"
16	64"	32.5"	27 - 28"	29.5"	39"	31"	13-13.5" x 32"
17	65"	33.5"	28 - 29"	30"	39.5"	32"	13-13.5" x 32"
18	67"	34"	28 - 29"	30.5"	40.5"	32"	14-14.5" x 32"

BOYS' HUSKY SIZE GUIDE

Age / Size	Height	Chest	Waist
8	51"	27.5"	26"
10	54"	28.5"	27"
12	58"	30.5"	28"
14	61"	32"	30"
16	63"	34"	32"

Note: Boys' Husky size coats are normally 1" shorter in the sleeves and 1/2" shorter in the body than a standard boy's size tuxedo jacket.

ADJUSTABLE PANT WAIST RANGE

27 - 28 - 29	51 - 52 - 53
30 - 31 - 32	54 - 55 - 56
33 - 34 - 35	57 - 58 - 59
36 - 37 - 38	60 - 61 - 62
39 - 40 - 41	63 - 64 - 65
42 - 43 - 44	66 - 67 - 68
45 - 46 - 47	69 - 70 - 71
48 - 49 - 50	

REVERSIBLE BELT SIZING

Size	Waist
X-Small	21 - 24
Small	25 - 28
Medium	29 - 32
Large	33 - 36
X-Large	37 - 40
2X-Large	41 - 44
3X-Large	45 - 48

ITALIAN LEATHER BELT SIZING

Size	Waist
Small	27 - 30
Medium	31 - 34
Large	35 - 38
X-Large	39 - 42
2X-Large	43 - 46
3X-Large	47 - 50
4X-Large	51 - 54

NOVELTY SUSPENDER SIZING CHART

Coat Size	Suspender Size
2B - 7B	Boys' (B)
8B - 46X	Men's (M)
47L - 60X	Long (L)

BOYS' SHIRT SIZE GUIDE

Shirt Size	Neck	Max. Sleeve	Max. Mid-Section*
X-Small	10" - 10.5"	20"	23"
Small	11" - 11.5"	24"	27"
Medium	12" - 12.5"	28"	31"
Large	13" - 13.5"	32"	35"

*Note: The Max Mid-Section measurement can be achieved by measuring around the largest part of the gentleman's stomach.

FITTED SHIRT SIZING CHART

Shirt Size	Neck	Max. Chest	Max. Mid-Section*
Boys' Large	13" - 13.5"	32	29
Small	14" - 14.5"	36	33
Medium	15" - 15.5"	40	37
Large	16" - 16.5"	43	41
X-Large	17" - 17.5"	46	45
2X-Large	18" - 18.5"	50	48
3X-Large	19" - 19.5"	55	52

*Note: The Max Mid-Section measurement can be achieved by measuring around the largest part of the gentleman's stomach.

REGULAR FIT SHIRT SIZING CHART

Shirt Size	Neck	Max. Chest	Max. Mid-Section*
Small	14" - 14.5"	39	36
Medium	15" - 15.5"	42	40
Large	16" - 16.5"	45	44
X-Large	17" - 17.5"	49	48
2X-Large	18" - 18.5"	53	51
3X-Large	19" - 19.5"	57	55
4X-Large	20" - 21.5"	61	59
5X-Large	22" - 23.5"	65	63
6X-Large*	24" - 25.5"	69	67
7X-Large*	26" - 27.5"	73	71

Note: When fitting larger size shirts, you must pay close attention to the body size in relation to the neck. Heavy-set people may have a small neck size in proportion to their body. A man that has a 62" chest may have an 18.5" neck, but that shirt would not cover the width of his body.

*Note: The Max Mid-Section measurement can be achieved by measuring around the largest part of the gentleman's stomach.

SIZE SCALE REFERENCE GUIDE

Coat Sizing Scales: Use these sizing scales as guides to see which styles are available in a particular size.

SCALE A

MEN'S	
Regular	34-74
Portly Regular	40-60
Short	34-60
Long	36-74
Extra Long	38-66

BOYS'

Regular	2-18
Husky	8-18

Coats available in this scale:

820	880
page 49	page 52

SCALE A2

MEN'S	
Regular	34-74
Short	34-60
Long	34-74
Extra Long	38-66

BOYS'

Regular	3-18
Husky	8-16

Coats available in this scale:

222	262	272	302	311	350
page 27	page 25	page 19	page 23	page 20	page 24
421	921	931	981		
page 18	page 17	page 21	page 22		

SCALE B

MEN'S	
Regular	34-66
Short	34-56
Long	34-66
Extra Long	38-56

BOYS'

Regular	3-18
Husky	8-16

Coats available in this scale:

202	221	372	392	601	712
page 26	page 35	page 29	page 31	page 47	page 45
990					
page 32					

SCALE B2

MEN'S	
Regular	34-66
Short	34-56
Long	36-66
Extra Long	38-56

BOYS'

Regular	3-18
Husky	8-16

Coats available in this scale:

252	602	701	822
page 41	page 48	page 50	page 43

SCALE D

MEN'S	
Regular	34-60
Short	34-50
Long	36-60
Extra Long	38-50

BOYS'

Regular	3-18
Husky	N/A

Coats available in this scale:

201	211	588	751
page 33	page 34	page 51	page 46

Note: In size scale D, coat style 588 is available up to 68L and 68R. (All other sizing in size scale D applies.)

SCALE E

MEN'S	
Regular	34-44
Short	34-44
Long	34-44
Extra Long	38-44

BOYS'

Regular	N/A
Husky	N/A

Coats available in this scale:

371	391
page 28	page 30

SCALE F

MEN'S	
Regular	34-50
Short	34-50
Long	34-50
Extra Long	38-50

BOYS'

Regular	14-18
Husky	N/A

Coats available in this scale:

122	132	172
page 38	page 39	page 40

Note: Even sizes only.

SCALE G

MEN'S	
Regular	34-66
Short	34-56
Long	34-66
Extra Long	38-56

BOYS'

Regular	3-18
Husky	N/A

Coats available in this scale:

182	192
page 37	page 36

Note: Even sizes only.

SCALE H

MEN'S	
Regular	34-56
Short	34-56
Long	36-56
Extra Long	38-56

BOYS'

Regular	14-18
Husky	N/A

Coats available in this scale:

802	852
page 44	page 42

BOYS' BACKLESS VEST

Coat Size Range	MEN'S FULLBACK VEST																		MEN'S BACKLESS VEST				
	Regular Sizes									Long Sizes - 6' 2" and over													
Vest Size Code	Small	Medium	Large	X-Small	Small	Medium	Large	X-Large	2X-Large	3X-Large	4X-Large	5X-Large	6X-Large	Small	Medium	Large	X-Large	2X-Large	3X-Large	4X-Large	5X-Large	6X-Large	Fit All
	3 - 6	7 - 12	14 - 16	18B - 35	36 - 38	39 - 42	43 - 45	46 - 48	50 - 54	56 - 58	60 - 62	64 - 66	68 - 70	36-38	39 - 42	43 - 45	46 - 48	50 - 54	56 - 58	60 - 62	64 - 66	68 - 70	60 - 70
	BS	BM	BL	RXS	RS	RM	RL	RX	R2	R3	R4	R5	R6	LS	LM	LL	LX	L2	L3	L4	L5	L6	SXA

PRICING INFORMATION

Find Tuxedos, Suits and Formal Accessories to match any budget


Ensemble Price


Coat Only Price

DIAMOND COLLECTION | Pages 17-40
Diamond Collection ensembles include:
Coat, any pant, any basic shirt with nickel-plated jewelry, any tie and any vest or cummerbund.


Ensemble Price

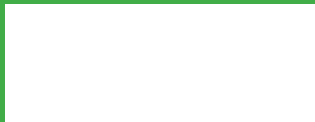

Coat Only Price

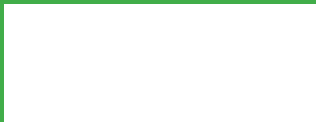
PLATINUM COLLECTION | Pages 41-48
Platinum Collection ensembles include:
Coat, any pant, any basic shirt with nickel-plated jewelry, any tie and any vest or cummerbund.


Ensemble Price



Coat Only Price

GOLD COLLECTION | Pages 49-51
Gold Collection ensembles include:
Coat, any pant, any basic shirt with nickel-plated jewelry, any tie and any vest or cummerbund.

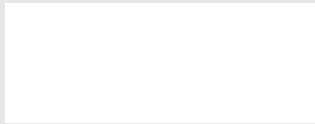

Ensemble Price


Coat Only Price

BUDGET COLLECTION | Page 52
Budget Collection ensembles include:
Coat, any pant, any basic shirt with nickel-plated jewelry, any tie and any vest or cummerbund.



POCKET SQUARES
An essential component of every ensemble, a colorful pocket square is available to match nearly every fullback vest or tie offered. Don't forget to add one to your look!



ACCIDENTAL DAMAGE WAIVER (ADW) - added to each rental
The ADW relieves you from additional charges resulting from accidental damages when they can't be repaired through normal dry cleaning or minor tailoring. The ADW does not cover malicious damages, lost or stolen items, or any late return charges.

All Tuxedo and Suit Rentals **MUST** be returned the next business day to avoid additional rental charges!



FOR RENTAL