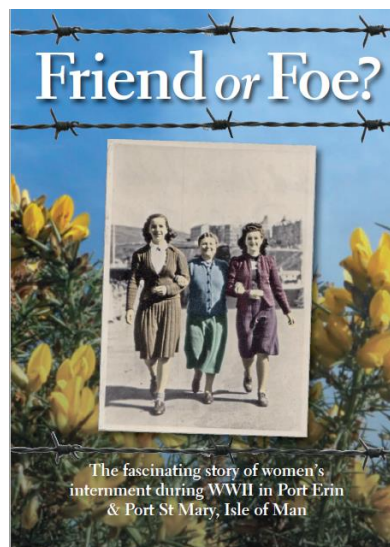


**Faill ort gys Treisht Eiraght Rushen!**

**Welcome to Rushen Heritage Trust!**

We have some exciting news! We have two books that will be arriving soon. Fifteen of our talented volunteers have been working on two new hardback books, both containing extensive new material. A team of seven, chaired by Doreen Moule, is close to completing 'Friend or Foe?', the only book exclusively covering WWII Women's Internment. The planned launch will be in October.

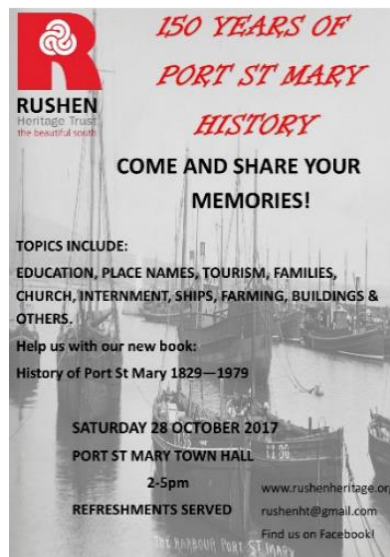


A team of nine, chaired by Staffan Overgaard, is making strong headway on 'A History of Port St Mary, 1829-1979,' Each member has taken a specific topic and the team is advised by John Qualtrough who has an encyclopaedic knowledge of Port St Mary's history. The launch date is 6 May 2019.

RHT's half day program for schools devised and run by Doreen Moule and Ali Graham - actively covering internment - continues to receive 5-star ratings.

Staffan's Street Sign Heritage project is progressing.

We are always on the lookout for new ideas for future exhibitions. Please email us on: [rushenht@gmail.com](mailto:rushenht@gmail.com) or find us on Facebook, if you have anything to contribute.



**INSIDE THIS ISSUE:**

**Kentraugh Mill National Mills Weekend.....2**

**Rushen Postcard Series.....4**

**Port Erin TT Day.....6**

**RHT Volunteer Focus.....7**

**Past, Present, Future Event.....8**

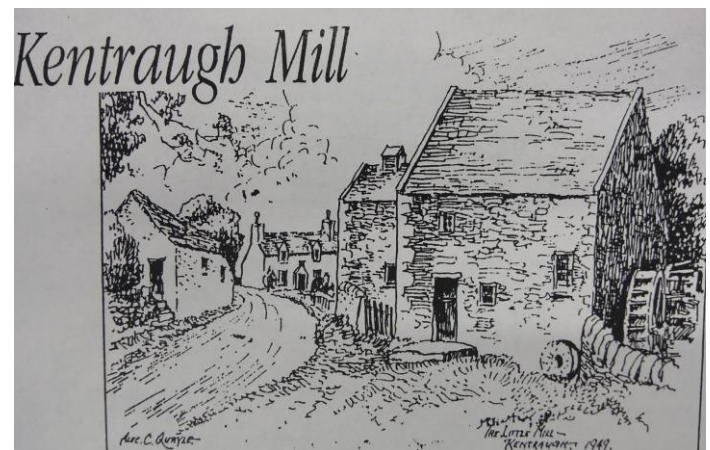
## Kentraugh Mill

The weather was fantastic for the National Mills Weekend, held this year on the 12-13 May. The turnout was good, and everyone learnt a bit more of the history of this ancient mill.

Kentraugh is an 'ancient mill' and had to feed a tithe pig each year for the Lord of Mann. 1506 is the earliest record when it was owned by Robert Qualtrough. The Qualtroughs continued here until 1904, when John Wood of Ballabeg, also a miller, became the owner. Milling ceased in 1943. The Mill was restored by Mr R. M. Nuttal, the present owner's father, in 1969 and is run by electricity. Restoration continues with the help of some gifted volunteers.

The cast iron wheels date from 1832; the stone nuts have wooden teeth. The middle stone is a French burr stone. A rebuilt example stands on the mill dam. The breast shot water wheel turned at about 4 revolutions per minute, developing approximately 6 horse power. There are 3 pairs of stones, a sack hoist, a bucket elevator, oat and barley sieves, cleaning and winnowing machinery and a drying tower with a fireplace below.

Tradition has it that the spring, which runs continuously, has healing properties for the stomach. It was previously used as a drinking water supply by the cottages nearby. It can still be seen by the roadside, but a recent analysis has shown that it is no longer suitable for consumption.



*Nameplate on the Miller's House*

**Photos from National Mills  
Weekend**



*Building that houses the mill, mill pond in the foreground*



*Mill machinery*



*French Burr Stone*



*Interior of the mill*



*Beehives with skep*



*Basement of the mill*

## Rushen Heritage Postcard Series

Construction of the Outer Breakwater in Port Erin commenced in 1863 and was completed in 1876. It was destroyed during a violent storm five years later in 1881. The Isle of Man Times of Saturday, January 19, 1884 mentions that it was “a gale of almost unprecedented force,” with the destruction of the breakwater estimated at £4000, equivalent to £470 000 today!



Traie Meanagh translates from Manx as ‘Middle Bay’ and was a mixed sex bathing pool that was highly unusual when it opened in 1899. The pool was closed in 1981 after subsistence had made maintenance difficult and possessed a danger to bathers. The pools were popular with the youth. It also hosted ‘Bathing Beauty’ competitions. An essential stop for a sunny summer’s day!



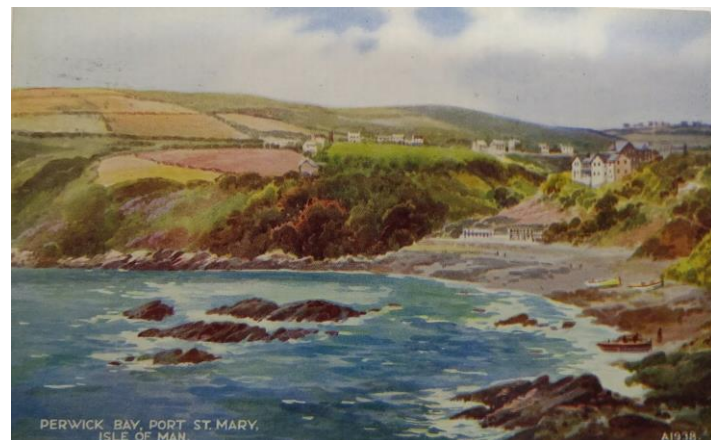
Port St Mary Lifeboat was established in 1896, as a response to the number of shipwrecks in the area. The Lifeboat station was considered for closure in 1928 by the RNLI according to The Isle of Man Examiner, November 30, 1928. Over a century ago, the lifeboat crews were responsible for rescues from incidents along the rocky coast between Langness and the Calf of Man. Modern equipment and communications now allows them to reach further afield.



Milner's Tower was constructed in 1871 by public subscription in memory of William Milner, a great benefactor to the people of Port Erin. The tower was built in the shape of a key and lock, a reference to Milner's Safe Co, Ltd. Bradda Head is a popular trail for workers, offering breath taking views of Port Erin Bay. There also used to be an 18-hole golf course.



Perwick Bay in Port St Mary is another popular spot for walkers. The hotel was established by a Mr Clague after the First World War to cater for the growth in tourism. It closed in the late 1980's and was subsequently turned into apartments. Little remains of the hotel swimming pool, the area now covered in overgrowth.



Cregneash is the oldest open-air museum in the British Isles with Harry Kelly's cottage being acquired for the Manx nation by the government in 1938, three years after Harry Kelly's death. The 80<sup>th</sup> anniversary of the cottage's opening was recently held on a fantastic sunny day with a very good turnout of invited guests.



## Port Erin TT Day

Port Erin TT Day returned this year on Monday 4th June. The weather was sunny and warm, following this pattern throughout the TT fortnight

This continues to be a completely FREE event, with great entertainment held from 1pm all the way until 10pm.

Fun was had amongst the young and old alike!

Lee Bowers put on an exhilarating stunt display and the Purple Helmets gave us their usual unique brand of entertainment.

The day featured some of the best motorcycle stunt acts in the UK and free rides on the beach from 1pm to 5pm, along with a wide variety of stalls and catering available from the great selection of eateries around Port Erin.

Some of the highlights included:

Free inflatable rides all afternoon

Food market stalls

Beach Football Competition

Sandcastle Competition



*Port Erin TT Day crowd*



*Lee Bowers in action!*

## Rushen Heritage Trust Volunteer

### Focus

#### Doreen Moule



Born in Wolverhampton, Doreen grew up in the Black Country and then trained as a teacher in Birmingham, where she taught in a Primary school from 1970 to 1999. In 1999, she was fortunate enough to secure a teaching position in Douglas, where she taught for almost 10 years. Doreen and her partner moved to Rushen in 2004 and four years later she retired. Doreen is also the Schools Liaison Officer for Rushen Heritage Trust.

Doreen has chaired the WWII Women's Internment team since it began, very ably steering it through two highly successful exhibitions which attracted 6,000 visitors; and is now leading the team of seven to the publication of a 240-page hardback book based on the topic.

#### Steve George



Steve was born in Port St Mary and has sailed the world. For many years he was Chief Engineer in the Merchant Navy with Shell & Texaco. Steve returned to the island in 1988 and spent ten years in ship management. In 2000 he started up EMCS, which supplies skilled people to repair ships and shipyards overseas. EMCS also runs Ramsey Shipping Services, which repairs ships in Ramsey plus an agency for cruise liners and commercial vessels visiting the island. Steve is Chair of the Story of the Sea Heritage Action Team and Chair for Port Erin Traders and vice chair Port Erin Commissioners, very active in all their events such as "The Island at War", the Beach Festival and the Christmas Festival.

## **Past, Present & Future Event.**

Rushen Heritage Trust will be running two events this year. The first will be our Past, Present & Future Event on August 18<sup>th</sup> at St Catherine's Church Hall, Port Erin. The event will be free and open to the public. We will be showcasing what we have undertaken over the years, what we are currently working on and what we have planned for the future. More information will be released on this event over the coming weeks, so keep an eye on Facebook and the website.

Please keep this date free!

## **A note concerning the new GDPR regulations**

New regulations have come into force regarding data protection, if you have given us your details.

This information will only be used by Rushen Heritage Trust for mailings concerning RHT events and for bank direct debit.

This information is kept only in hard copy, not retained on a laptop, desktop, iPad or tablet.

Please let us know if you are not happy for us to retain these details.

## **Friends Event**

The Friends of Rushen Heritage is now up and running, administered by Pam Crowe and Pamela Tomlinson. Annual membership is £12 a year and brings many benefits, not least the annual get together at a unique venue. This year we are privileged to invite Friends to Collinson House, a fascinating building with a fascinating history.

Friends will receive an invitation to this event in due course, we would love you to become a Friend and join us, your subscription will help Rushen Heritage Trust to continue telling the stories and sharing memories keeping heritage alive for the next generation. PLEASE BECOME OUR FRIEND. Further information available from Pam Crowe on 834614.

## **lomwalks**

Now that it finally looks like summer is here, it is the perfect time to go on a walk with the lomWalks app.

The app can be downloaded from our website:

<http://www.isleofmanwalks.com/>

Historical information about the walks is sent to your phone as it picks up the signal from the numerous beacons we have set up in the south.

Isle of Man Walks aims to make heritage accessible and engaging for everyone, bringing it up to date with interactive walking tours using iBeacon technology outdoors - the first of its kind in the world!