

Project Data

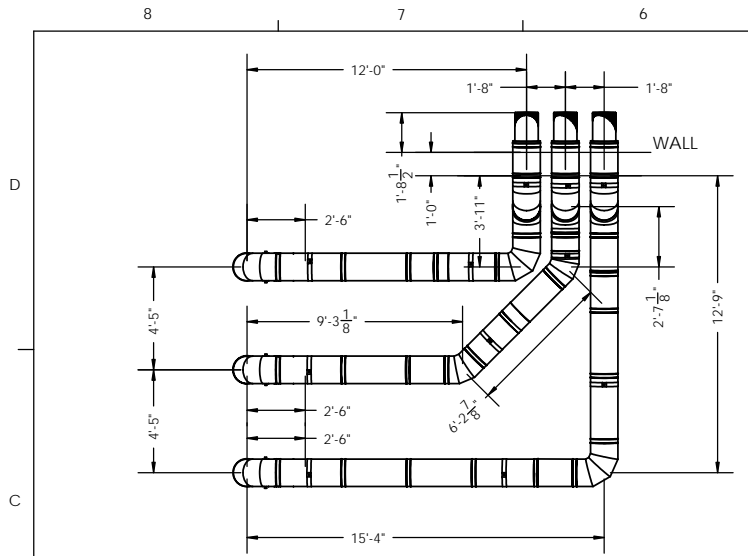
Project No:	19D-0609-3	Project Name:	
System No:	138251	Location:	IL
Date:	4/10/2019	Layout/BOM Title:	19D-0609-3 (Revision 3 BOM)
Prepared for:	Air-Tec, Inc. Jeff Koller	Product(s):	DuraSeal DSD
Prepared by:	DuraVent, Inc. Bryan Freet		

Quote

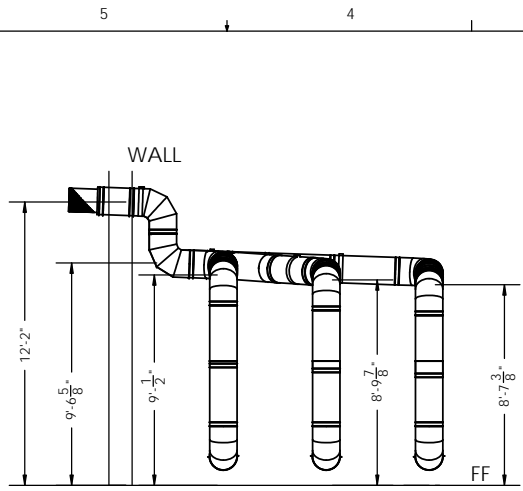
Qty	Item No	Description
9	DSD12E88UK	ELBOW DSD12" 88 DEG AL29-441
5	DSD12E90UK	ELBOW DSD12" 90 DEG AL29-441
3	DSD12LAT20UK	Telescopic adjust. 20" Length DSD 12"
5	DSD12LAT32UK	Telescopic adjust. 32" Length DSD 12"
14	DSD12L36UK	LENGTH DSD12" X 36" AL29-441
2	DSD12L24UK	LENGTH DSD12" X 24" AL29-441
3	DSD12L18UK	LENGTH DSD12" X 18" AL29-441
11	DSD12SBH	SUSPENSION BAND DSD12" 430
3	DSD12HFFUK	HeatFab Female Adapter - HF to DSD12" AL29-441
4	DSD12AL18UK	ADJUST LENGTH 18" DSD12" AL29-441
3	DSD12MCIUK	MITER CUT DSD12" AL29-441
2	DSD12E45UK	ELBOW DSD12" 45 DEG AL29-441
4	LUBE	Silicone Oring Lube 5 oz
4	VITON-S	Viton Caulking 2,2 oz
3	DSD12CSH	CRADLE SUPPORT DSD12" 430

Last revised on 4/10/2019 12:11:50 PM.

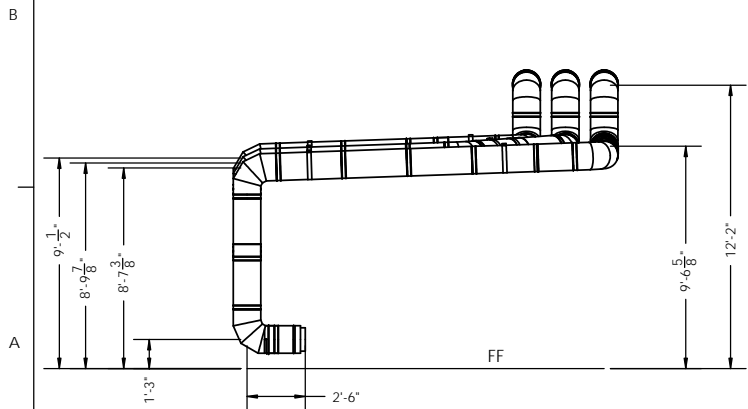
This quote is valid for 90 days. Duravent warrants its products are manufactured in accordance with the appropriate UL® standard. Any errors, omissions or required changes to Duravent provided documents or drawings must be noted on the submitted documentation, signed and returned to Duravent to confirm that the revised requirements can and will be met. The venting design is the sole responsibility of the purchaser. All dimensional information, layouts, product specifications and product application must be approved by the purchaser prior to order placement, as indicated by signing a copy of the drawings and returning them to Duravent. Any purchase order received without a signed approval will be considered confirmation that all submitted product information and dimensions are fully approved. The drawings and proposal are the property of Duravent.



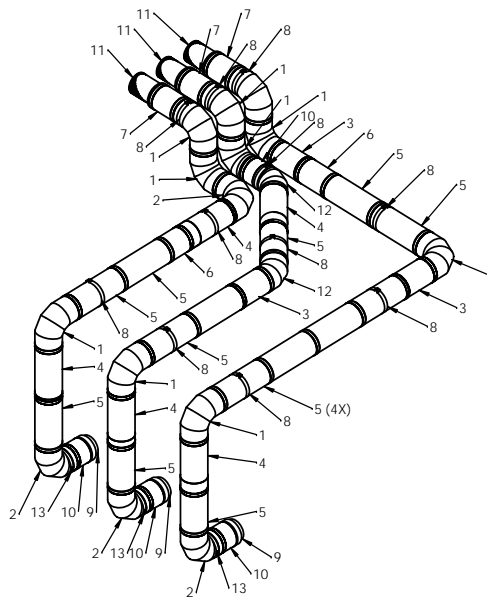
PLAN VIEW



SIDE VIEW



ELEVATION VIEW



ISOMETRIC VIEW


ITEM NO.	QTY	PART NUMBER	DESCRIPTION	MATERIAL
1	9	DSD12E88UK	12" Dia. 88° Elbow	AL29-4C/441
2	5	DSD12E90UK	12" Dia. 90° Elbow	AL29-4C/441
3	3	DSD12LAT20UK	12" Dia. 20° Telescopic Length	AL29-4C/441
4	5	DSD12LAT32UK	12" Dia. 32° Telescopic Length	AL29-4C/441
5	14	DSD12L36UK	12" Dia. 36" Length	AL29-4C/441
6	2	DSD12L24UK	12" Dia. 24" Length	AL29-4C/441
7	3	DSD12L18UK	12" Dia. 18" Length	AL29-4C/441
8	11	DSD12SBH	12" Dia. Suspension Band	430
9	3	DSD12HFFUK	12" Dia. Heatfab Female	
10	4	DSD12AL18UK	12" Dia. 4" to 14" Adjustable Length	AL29-4C/441
11	3	DSD12MCUK	12" Dia. Mitter Cut	AL29-4C/441
12	2	DSD12E45UK	12" Dia. 45° Elbow	AL29-4C/441
13	3	DSD12CSH	12" Dia. Cradle Support	430

NOTE: FLUES ARE 12"ID, 14"OD

M&G DURAVENT WARRANTS THAT ITS PRODUCTS ARE MANUFACTURED IN ACCORDANCE WITH THE APPROPRIATE UL STANDARD. ANY ERRORS, OMISSIONS OR REQUIRED CHANGES TO DURAVENT PROVIDED DOCUMENTS OR DRAWINGS MUST BE NOTED ON THE SUBMITTED DOCUMENTATION, SIGNED AND RETURNED TO M&G DURAVENT TO CONFIRM THAT THE REVISED REQUIREMENTS CAN AND WILL BE MET. THE VENTING SYSTEM DESIGN IS THE SOLE RESPONSIBILITY OF THE PURCHASER. ALL DIMENSIONAL INFORMATION, LAYOUTS, PRODUCT SPECIFICATIONS AND PRODUCT APPLICATION MUST BE APPROVED BY THE PURCHASER PRIOR TO ORDER PLACEMENT. AS INDICATED BY SIGNING A COPY OF THE DRAWINGS AND RETURNING THEM TO M&G DURAVENT. ANY PURCHASE ORDER RECEIVED WITHOUT A SIGNED APPROVAL WILL BE CONSIDERED CONFIRMATION THAT ALL SUBMITTED PRODUCT INFORMATION AND DIMENSIONS ARE FULLY APPROVED.

CONTRACTOR IS RESPONSIBLE FOR SECURING SUPPORTS TO BUILDING. REFER TO THE APPLICABLE INSTRUCTIONS WHEN INSTALLING PRODUCT. ALL INSTRUCTIONS CAN BE FOUND ON OUR WEBSITE AT: www.duravent.com/ProductDocumentSearch.aspx

SIGN-OFF REQUIRED: _____

JOB NAME	PROJECT#	19D-0609
COMPANY	REVISION	3
DuraVent Member of M&G GROUP <small>ALL RIGHTS RESULTING FROM THIS DESIGN ARE RESERVED TO THE M&G GROUP.</small>	UNITS AND TOLERANCES	DRAWN BY
	<small> All dimensions in inches Angles: 1/2°, 1°, 1 1/2°, 2°, 3°, 4°, 5°, 6°, 7°, 8°, 9°, 10°, 11°, 12°, 13°, 14°, 15°, 16°, 17°, 18°, 19°, 20°, 21°, 22°, 23°, 24°, 25°, 26°, 27°, 28°, 29°, 30°, 31°, 32°, 33°, 34°, 35°, 36°, 37°, 38°, 39°, 40°, 41°, 42°, 43°, 44°, 45°, 46°, 47°, 48°, 49°, 50°, 51°, 52°, 53°, 54°, 55°, 56°, 57°, 58°, 59°, 60° </small>	DATE
		SHEET#
PROJECT FOLDER		Sheet 1 of 1