



NEWSCASTER

Name of the Original NCB 103rd Base Newspaper
103rd NCB Reunion association – March 2019
Supporters of this issue are:
Fred & Dee Mulhausen, Joe Reinhardt

Flags UP 
May
18th & 27th
On March 5th put your
Seabee Flag UP

“REMEMBER Month”



TAPS

Eloise Reinhardt Aug. 1, 2018
William Carr Dec. 16, 2018
Alvin Berkencamp Jan/11/19

Thought for the Day
“TODAY IS THE TOMORROW
YOU WORRIED ABOUT
YESTERDAY”

Beach Parties

For those who served on
Guam in the 1940 & 50s.
You will remember the
monthly beach parties, a
Bar-B-Q hosted by our Co.
Leadership. (Picture above)

It was our time to relax on
the beach, swim and enjoy a
beer/s. We also enjoyed the
fellowship and friendship we
all acquired during our time
in the South Pacific

MEMORIES



Just a reminder “TO DO’ THIS YEAR”

*Visit your VA Service Officer

- 1- Update your Will/Living trust
- 2- Change all batteries in Smoke Alarms
- 3- Exercise daily (walk a mile a day) SMILE
- 4- Put a fire extinguisher in the Kitchen
- 5- Locate all your vital papers & personal VALUED items in a container: i.e. deeds, Insurance papers, pictures, water, Rx, etc
- 6- Get your Veterans Drives Lic.

BE PREPARED

SMILE and Enjoy your Senior Days



CAN DO

Let us not forget



March
2nd 1867 CEC Established
5th 1942 **Seabee Birthday**

22nd 1945 Seabees ferry
Patton across the Rhine
River

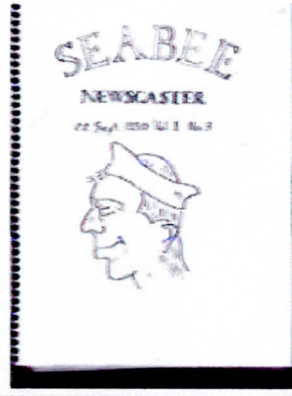
April

1st 1945 Seabees land on
Okinawa

8th 1942 Doolittle Drops
“A” bomb on Japan
WW I begins 1917


May

1-1942 Battle of Coral Seas
8th 1945 VE Day G
Germany Surrenders



Seabee Newscaster Vol. 1 No. 3
Editor: Freddie Day
The cover of Vol. 1 No. 3; a 4 page newsletter printed
on base by Freddie on an old Underwood typewriter
& well used copier. Fred Immermann, DM2; provided
us with this copy (printed Sept. 22, 1950.) This issue
covered: Winners of Bingo, Movie Schedule, Sports,
Bowling Results, Church Activities, Boxing & a Short
story “Impressions of a Hopeless Idiot” etc.

Saturday Nov. 19, 1949 Guam News

For many of us this was our first Typhoon  110 Knots
**Headlines: No Known Deaths as Typhoon Strikes, Inarajan suffering high
loss, Camp Witek hardest hit.** The worst Typhoon since 1918. Many of the
large and small Quonset huts collapsed on the Island, including the Officers
and Chiefs clubs. The Naval Supply took the big hit. Telephone poles around
the island fell and left most of island without power. While winds whipped
around Mrs. Ramsey, USAF- gave birth to an 8 ½ lb baby boy at Anderson
AFB. **Typhoon Allyn** will be long remembered on Guam.

**Queen Bee at Rest
ELOSIE REINHARDT**

The spouse of **Joe Reinhardt**

Eloise Reinhardt, a 55-year resident of Carmel, NY, died peacefully at Putnam Hospital Center on July 27, 2018. She was 89 years old. On March 28, 1953 Eloise married the love of her life **Joseph** at St. Lawrence O'Toole Church in Brewster, NY. **Eloise** was an avid bowler, a flutist with the Brewster Fire Dept. Fife and Drum Corp. She enjoyed boating with her family & riding ATV's. Above all, Eloise took great pride in her family and her grandchildren. Besides her husband **Joseph** of 65 years, **Eloise** is survived by her 3 sons, **Jay (Rose) Reinhardt** of Mahopac, NY, **Joel (Lisa) Reinhardt** of Mt. Kisco, NY and **Jamie (Susan) Reinhardt** of Savoy, MA, her sister, **Carol Macomber** of Brewster, NY, her six grandchildren, **Kristin, Matthew, Christopher, Jordan, Javen** and **Robbie** and one great grandson, **Matthew James**. Also several nieces and nephews. See Seabee directory for **Joes Reinhardt** address.



Smile and have a great Day

UPDATE on the BROWN SNAKE

Guam is hosting the venomous brown snake. It is raising havoc on the native animal population. It is believed the snake hitch-hiked on military ships during WW II from the Papua New Guinea area. Researchers have shown it's not just the birds and rodents that have suffered – the growth of new trees could be falling by as much as 92 percent due to the snakes' appetites. This species is not overly dangerous to humans, though its bite packs a punch. It preys mostly on small animals. Since the wildlife on Guam evolved without these kinds of scaly predators snacking on their eggs and young; the forests provided a smorgasbord for these invaders, causing the population to expand to a whopping 2 million snakes, with densities of up to 5,000 individuals per square kilometer (or 13,000 per square mile). They hang from trees like spaghetti, they can short out power lines and much more, Efforts are underway to cope with this snake, but to date no results.



Thank you for your Gift cards, notes, Short stories, & pictures... Many have sent stamps &/or money to help with postage. Nancy & I thank you so much; we wish you & your family's good health & happiness.

William "Bill" CARR



3/101929 – 12/16/2018

Bill Carr was born in Clearfield, PA. He enlisted in the Seabees and took his basic training at Port Hueneme, CA. After his time was up he moved his loving family to San Bernardino, CA, where he lived for 57 years. He was married to **Jeanne** for 52 yrs. His wife **Jeanne** had passed away in 2006. They are proud parents of 4 daughters, as well numerous grandchildren and great grandchildren. He is survived by his youngest brother **Duane Carr** of Erie, PA. Also a Seabee in the 103rd NCB

The **Bill Carr** service was held on Jan 16th and he was buried at the **Riverside CA, National Cemetery**.

Letters & cards may be sent to **Duane Carr**: (His brother, also a Seabee in our association) See your Directory for his address.



Call your VA & ask for the Veterans Service Officer. He/She is your friend and personal contact with the VA. It cost nothing to ask. Go prepared with your **DD 214** or **Discharge papers & health records**. Make a list of questions you want to ask (saves time) you may be surprised what you &/or your family are entitled too. I.e. the VA is installing **Safety Bars** in our Shower.

Editors
Wayne & Nancy
211 La Cresta
Drive
Arroyo Grande,
CA 93420



Steelworker - SW



The Steelworker rating was established in 1948, and drew its initial members from the ratings of Shipfitter (CS) (Steelworkers) and Shipfitter (CB) (Riggers).

Steelworkers rig and operate special equipment used to build metal structures. They lay out and fabricate structural steel and sheet metal and work with concrete reinforcing steel bars. They perform welding and cutting operations, read blueprints and use special tools.

Steelworker class "A" school is approximately 11 weeks long, and the school is located in Gulfport, Mississippi. The SW rating requires a 5 year enlistment obligation.

Steelworkers perform tasks directly related to fabrication and erection of pre-engineered structures, including steel reinforcement. They perform various welding and cutting operations. SWs control job site deployment of materials and equipment, and direct and coordinate the composition, training, and efforts of crews that fabricate, assemble, erect, position, and join steel structural members and fabricated sections.

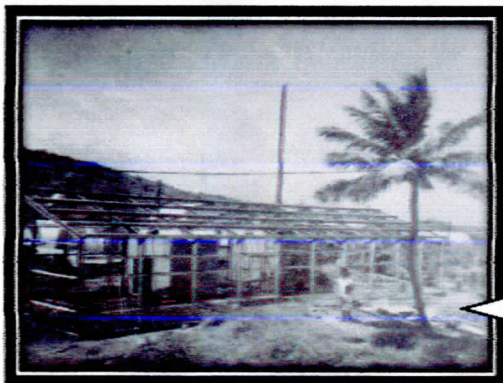
Steelworkers prepare progress reports, time records, construction schedules, and material, labor, tool and equipment estimates for construction projects. They act as project supervisors and trainers for junior personnel.

Their duties include problem solving, planning, estimating, scheduling, cost control, and personnel management. As project managers, they plan, staff, direct, and control multiple construction projects, and they ensure compliance with specifications, code requirements, plans, and contracts. SWs maintain individual combat readiness and perform tasks required in combat and disaster preparedness or recovery operations.

Sea tours and shore tours for Sailors that have completed four sea tours will be 36 months at sea followed by 36 ashore until retirement.

Qualifications, Interests, and Working Environment

Steelworkers must be able to work with tools, equipment and machines that require manual dexterity and close teamwork. It is important they be resourceful, capable of doing detailed work and repetitive tasks and knowledge of algebra. Other helpful characteristics are curiosity and a good memory, writing and speaking skills, record keeping ability, good physical condition and stamina. Using, understanding & reading blueprints.



A "Butler" Steel building - Truk - 1949-1950





Builder – BU



General Description

Builders make up the largest segment of the Naval Construction Force. They work as carpenters, plasterers, roofers, concrete finishers, masons, painters, bricklayers, and cabinet makers. This is a 5 year enlistment program.

What They Do

The duties performed by BUs include:

- building and repairing wood, masonry concrete, and steel structures;
- installing interior finish work, including installing sheet rock, paneling or ceramic tile walls and installing ceiling and floor tile, millwork and trim;
- operating carpentry, cabinet-making, and tool and equipment repair shops; building forms for concrete construction;
- mixing, placing and finishing concrete; operating concrete batch plants, portable concrete mixers and other concrete finishing equipment and tools;
- building wharfs, bridges and other heavy timber structures;
- reading and interpreting blueprints and preparing sketches for projects;
- Making estimates of material, labor, and equipment requirements.

BU's may work in a variety of conditions, independently or as members of a large team. Their many different duties may be performed in climates ranging from desert to arctic.

Requirements

ASVAB: AR + MC + AS = 145

48 month obligated service required for all convert in and PACT Sailors.

S. T. E. M.

