

the Rolleston Junction

Edition 39 - Winter 2024



In this issue...

- COUNTDOWN TO CHRISTMAS
- TRIBUTE TO NICK PEARSON
- NORDIC WALKING

Keep in touch at rollestonjunction@gmail.com

Find us at rollestonvillage.uk & follow us on **Facebook**

Dates for your Diary

22nd - 24th November	10am - 4pm	Christmas Market	Patchings Farm, NG14 6NU
24th November	10am - 5.30pm	Newark Christmas Lights Switch On Free Parking in all NSDC Carparks	Newark Royal Market
24th November	4pm - 9pm	Southwell Christmas Lights Switch-on	Southwell
2nd December	7.30pm	Parish Council Meeting	Village Hall
2nd December	7pm	'Light Up a Life' Beaumont House: A Christmas Carol Remembrance Service with readings, song and reflections	Southwell Minster
10th-14th December	7.30pm (Sat matinee 2.30pm)	Treasure Island. Four actors in forty roles... What could possibly go wrong? Tickets: 07733 179986 /rhtc.co.uk	The Robin Hood Theatre, Averham
12th December	7.30pm	Book Club - Christmas Meal Booking essential - contact Pati Colman	The Crown
13th December	1.30pm - 2.15pm	Friday Lunch time concert (FREE) Ceremony of Carols sung by the Cathedral Chorister	Southwell Minster
16th December	7.30pm	Michael Buble Tribute Act: 'Christmas by Candlelight'. For tickets: www.concertsbycandlelight.com	Southwell Minster
6th January	7.30pm	Parish Council Meeting	Village Hall
24th January	7.30pm	Book Club	Venue TBC
28th January - 1st February	7.30pm (Sat matinee 2.30pm)	The Good Life. A comedy based on the well loved sit-com Tickets: 07733 179986 /rhtc.co.uk	The Robin Hood Theatre, Averham
3rd February	7.30pm	Parish Council Meeting	Village Hall
3th February	Evening (TBC)	Songs Around the British Isles	Village Hall
12th February	7.30pm	Book Club	Venue TBC
3rd March	7.30pm	Parish Council Meeting	Village Hall
13th March	7.30pm	Book Club	Venue TBC

* Check latest times and venues on the Book Club meetings:
Contact Pati Colman: **07786 937266** pati.colman@icloud.com

To ensure you are on the village email list contact:
rollestonjunction@gmail.com

Hello again

from the Junction Team!

It's hard to believe it's the festive season again!

On page 4 we have published Rolleston's own 'Countdown to Christmas' so you don't miss a thing. These are the known events at the time of writing. Keep an eye out for village emails with more updates over the coming weeks.

For pub opening times and festive events at The Crown please refer to page 6. By now you will have received a separate flyer through your door giving the full details of their offerings and festive menus.

On page 2, we list other events in the wider locality, including festive dates for the 'Lights Switch-on' in Southwell and in Newark, as well as concerts at Southwell Minster, and forthcoming plays at Robin Hood Theatre in Averham.

The Book Club meetings and the Parish Council Meetings up to March 2025, are also listed in Dates for your Diary.

If you are new to the village, we would like to welcome you to Rolleston and mention that all regular events and groups, (e.g. pilates, yoga, indoor bowls, darts, coffee mornings to name a few) are listed on page 30 with relevant contact details of the individual organisers.

On page 15, we pay tribute to and celebrate the life of Nick Pearson, who will be greatly missed by family and friends. Nick, as a former resident of Rolleston, contributed so much to the village and our community.

We congratulate Chris Stanley, who has really found her stride with Nordic Walking and its transformative, therapeutic effect on people living with Parkinson's. (See page 17). Her story and her outstanding achievements are truly inspirational.

We are privileged to live in this community; we wish everyone a Happy Christmas and our best wishes for the new year ahead.

Carole, Gill and Beth

With gratitude to all our readers and to our advertisers during 2024 for your loyalty and support. Wishing you all a healthy and prosperous New Year.

Countdown to Christmas



1st December	Staythorpe Road 11.35am (approx.)	Salvation Army Santa Toy Run (5 minute stop opposite the pub for your toy donations - unwrapped please).
7th December	Staythorpe Road 5pm (approx.)	Young Farmers Tractor Run With complimentary mince pies at the pub
12th December	Village Hall 12pm	Seniors' Christmas Lunch 12.00 for 12.30pm
18th December	Kate Greenaway Garden 6pm	Carols Round the Tree 6pm: mulled wine & mince pies 6.30pm: Carol Singing. Cash collection for Beaumont House.
24th December	Holy Trinity Rolleston 6pm	Christmas Eve Carol Service Get there early - it's usually a full house!
25th December	Holy Trinity Church 10:30am	Christmas Day Service

For opening times and events at The Crown over the festive period, please see page 6. At time of writing, the timetable for Southwell Lions Santa's Sleigh is to be confirmed. For this and all other events, refer to local press and village emails.

Editorial Team, Rolleston Junction



Church News

As we bid farewell to the light nights and welcome in the darker evenings our thoughts turn to warm fires, turning up the heating and putting the winter quilt on the bed.

In the church we look forward to preparing for the Carol service on Christmas Eve at 6pm. This is always a lovely event and a very special start to Christmas. Everyone, and especially children are warmly welcomed, and it gives the village a chance to come together, fill the church, and celebrate the forthcoming birth of Jesus.

For those who prefer to celebrate on Christmas Day there will be a special Christmas Day service at 10.30am.

Looking forward to next year, on 8th February there is an event in The Greenaway featuring Songs around the British Isles put together by Elizabeth Blakey, and there will be a supper and bar provided. So, put the date in your diary and we will send out more information nearer the time.

Peter Salter



www.crownatrollestone.co.uk
Telephone 01636 925719
Email hello@crownatrollestone.co.uk



November 27

Christmas Menu Available

December 7

**Tractor Run from 5pm
complimentary Mince Pies**

December 18

**After Carols Round the Tree
Come and join us for a drink!**

December 23
and 24th

**Pub and Restaurant are Open
12 – 11pm**

Christmas Day

**Pub open for drinks only
complimentary nibbles 12– 2:30pm**

Boxing Day
(26 December)

**Pub and Restaurant Open 12-6pm
Special Boxing Day Roast Dinner**

New Years Eve
(31 December)

**Pub and Restaurant Open
12noon – 1am
Special New Year's Eve Menu
Reservations Only**

New Years Day
(1 January)

**Pub and Restaurant Open 12 – 6pm
Special New Year's Day Roast Dinner**

News from Trent Ward, Newark & Sherwood District Council

Cllr Keith Melton

Free Weekend Parking for the Festive Season

Newark and Sherwood District Council is once again offering free weekend and Bank Holiday parking at all its managed pay and display car parks in Newark to support businesses and attract visitors during this festive season.

Prior to this initiative, it was only Sundays where visitors could park for free. Now, free parking will be provided on Saturdays as well as Sundays starting from Sunday 24 November, coinciding with the Christmas Lights Switch On, running through to Sunday 29 December.

It will also include free parking for the Bank Holidays: Wednesday 25 December and Thursday 26 December.

The aim is that the free parking will motivate residents to do their Christmas shopping locally this year, in an effort to support Newark's amazing independent retailers and town centre.

So, since we are getting close to Christmas, let me be one of the first to wish you all Happy Season's Greetings.

Climate Change voice silenced

On a personal note, I have lost my role of portfolio holder for Climate Change and Net Zero at Newark and Sherwood District Council. It would seem I was proving to be too challenging on the issue of nature protection when it comes to factors related to planning.

I have clearly stepped on some sensitive toes just a little too hard. But the sad thing is that they have chosen not to maintain Climate Change as a special portfolio. They have spread the issue over all the other portfolios, and it is my view that residents and the District Council area will suffer as a result.

Newark and Sherwood scored very poorly on dealing with Climate Change when they were measured against other District and Borough Councils around the UK. We had started to make progress, but that progress has certainly slowed down following my departure.

I hope there will be a change of mind, but I am not currently holding my breath. Write to me, keith.melton10@gmail.com and let me know what you think.

Cllr. Keith Melton



✉ keith.melton@newark-sherwooddc.gov.uk

• Trent Ward - NSDC

Cllr Bob Steele

Rolleston Parish Council News

Trees and bees and other things...

After the summer break things got off to a busy start in September with meetings on the 2nd of September and 7th November and another due in December. The beekeeping event on the 10th of September was a great success. Michael Brooks provided a great practical session in the village hall.

More than twenty people attended and we were greatly entertained and informed. £150 was donated to the cause of bees in the village. We now have four very busy active

beehives in the allotments on Staythorpe Road. Well worth a visit, but 'bee careful' – they can sting!

Pati Colman organised a first aid course held on the 26th September in the village hall. This was run by the Newark Community First Aiders and was very well attended by approximately 20 people. It was extremely interesting and useful. The course was provided for free, and the Parish Council donated £50 to the NCFA charity. There are plans to organise another course in Spring 2025.

The village playpark continues to be an item for consideration by the PC, since we own it. We are working on the acquisition of new signage for the park. This is important as we need to be sure that users are informed what to do in case of an accident and to be sure that we are adequately covered by our insurance policy. The other main consideration is developing a plan for keeping the park in good condition and safe to use. Replacing any of the items in the park will be expensive. The park is regularly monitored by a small group of people from the village and by an independent surveyor on behalf of NSDC. Keeping the park going is a challenge for the PC and we are continuously looking for finance to maintain it.

On a lighter note, in response to our request and with help from Keith Melton, our District Councillor, NSDC are putting together a project for planting trees in the village. We were hoping that this would happen this winter, but it looks more likely that it will be winter 2025.

We are starting to put together our budget for 2025/26. Denise Bryant our clerk is undertaking this with the aid of Michael Gemson using the finance package SCRIBE. Having an accurate budget will enable us to request our precept for 2025/26. Some money is forthcoming from NCC and NSDC for flood protection and alleviation measures in the village. Let's hope that this winter is flood free, but we must be ready for them and Steve Bosworth is putting together a bid for money. We also have two more flood wardens now – Michael Gemson and David Sole, so we have more manpower and facilities to help if and when floods occur.

And last, but definitely not least – the PC voted unanimously to set in motion the activity of creating a formal 'Neighbourhood Plan' for Rolleston. You will have received at least one, and probably more emails about this.

The process of developing the plan is quite involved and Chris Baillon-Saunders is playing an important role in this activity. The plan will give the village more power to set out how it would like to be developed and adds another dimension to our case for keeping facilities such as the village hall in the way we would like them to be.

Please look out for messages about the plan in your email and be ready to engage with it. Have a great festive season!

Cllr. Bob Steele



Chair, Rolleston Parish Council

✉ bob.steele@rolleston-pc.gov.uk

JARVIS FLOORING

DOMESTIC & COMMERCIAL

- * CARPET
- * VINYL
- * LVT
- * LAMINATE

UNIT 5
24 THE ROPEWALK
SOUTHWELL

TEL: 01838 382859

Fiskerton Shop & Post Office

Incorporating The Stable Salon Hairdressers

- Convenience store, selling locally sourced produce
- Post Office
- Hairdressers
- Dry Cleaning



POST
OFFICE

General Store: Open Mon to Sat 6.15am-5.30pm, Sunday 7am-4pm
Post Office Counter: Open Mon to Fri 9am-5.30pm, Sat 9am-12.30pm
Stable Salon Hairdressers: Call 01636 830 044
General Store/PO: 01636 830230

Village Hall Lotto

Here are the winners since the last edition of the Junction.

Ross Thackery, Frank Mitchell, Shirley and Ron Burnett, Mark Pearce, Sandra Sawyer, Glenice Walton, Stuart and Claire Burbidge, Di Overton, Nichola Grange, Simon Haydock

There are two vacant numbers, 14 and 50 if anyone would like to contact me.

Thank you for your kind support which we do need.

A £50 cash prize will continue to be awarded each week and the lotto keeps the village hall running as a facility for to enjoy.

Thank you to all our lotto supporters and see you over the festive period!

Angela Sanders

☎ 01636 815045

✉ angelajsanders@btinternet.com



News from County Councillor for Farndon and Trent Division, NCC Cllr Sue Saddington

In touch with Council news

I guess we didn't really see much of a summer this year, and as winter draws in, we are moving towards shorter, darker days.

As the cold days approach, if you know of anyone who would like help in applying for pension credit, Newark County Councillors including myself are holding a drop-in centre in Newark where we will try to answer questions and help fill in forms. People can also contact the Pension Credit claim line on 0800 99 123

You may have noticed potholes are now being repaired in a more permanent way, using a relatively new method. The Old Great North Road is now a pleasure to drive, but I have asked why Highways didn't do the stretch from Trent Bridge to the Cattle Market Island. I believe it is now on the list.

More locally, hot boxing is coming to Rolleston! This is when Highways repair an elongated patch on the road with a machine and it certainly makes a difference. Fiskerton Road is due to be hot boxed and I am assured it will be done in this financial year.

Drains and gullies have been a problem, work is ongoing, and Rolleston is on the list.

I know there is a concern regarding the Hedge at Holly Court, I have asked NCC again that they cut it and am trying to find out exactly who now owns it, as it's not clear.

We appear to be inundated with proposals for solar farms. Recently, a County Council motion concerning the "Appropriate location of photovoltaic power stations (solar farms)" was considered at the County Council meeting.

Cllr Taylor (of Misterton) introduced the motion, and I seconded it. Although it would be nice if our villages and surroundings could stay just as they are, we know this

cannot happen; we must now work towards mitigation within our villages and countryside.

As you look forward to events in the village over the Christmas period, I am happy to contribute from my Divisional fund as usual if asked. Otherwise, I send you my Seasonal Greetings and good wishes. Keep warm and take care.

Kind regards,

Cllr. Sue Saddington

☎ 0115 977 4158

✉ cllr.saddington@nottsc.gov.uk

- County Councillor for Farndon and Trent Division, Nottinghamshire County Council
- Vice Chairman of the Pension Fund Committee, Nottinghamshire County Council
- District Councillor for Muskham, Newark and Sherwood District Council



TOM GERAGHTY & associates



CHARTERED ACCOUNTANTS AND BUSINESS ADVISORS

Following a successful 40-year career in practice, Tom Geraghty, a local chartered accountant, decided to collaborate with his daughter Polly, a tax specialist, to bring you a bespoke accountancy service - tailored to your individual needs.

Contact us and talk to a member of our team or pop in to see us to discuss your needs.

We offer a wide range of services; some of these are listed below:

- Business Advice
- Business Start-ups
- Bookkeeping
- Accounts
- Corporation Tax
- Self-Assessment
- PAYE & NI
- VAT
- Making Tax Digital
- Payroll inc. CIS
- Auto-Enrolment
- Cloud-Accounting

38-40 Northgate | Newark
Nottinghamshire | NG24 1EZ
T: 01636 642 882

E: tax@tgeraghty.co.uk
www.tgeraghty.co.uk



THE INSTITUTE
OF CHARTERED
ACCOUNTANTS
IN ENGLAND AND WALES
AUTHORISED TRAINING EMPLOYER

Claire's Recipe

Mulled Wine

The smell of Mulled wine slowly warming on the stove always makes me feel Christmassy and although you can buy plenty of readymade versions, when I have the time, I love to make this one. It is a Jamie Oliver recipe from a while back.

To serve 10 you will need:

2 Clementines, 1 Lemon and 1 Lime

200g caster sugar

6 cloves, 1 cinnamon stick, 1 vanilla pod and 1 nutmeg to grate

2 bottles of Chianti or other Italian red wine and 2 star anise

Put the sugar in a large pan over a medium heat.

Using a vegetable peeler remove large pieces of the citrus fruits peel and add to the pan

With the juice of both the clementines. Add 10-12 gratings of nutmeg and the vanilla pod, split lengthways, the cinnamon stick and cloves and enough red wine to just cover the sugar.

Stir then heat slowly until all the sugar has dissolved then boil for 4-5 minutes to create a thick syrup - it will smell delicious.

You can get ahead up to this point and then when you want to serve, warm up the syrup and pour in the rest of the wine and the star anise and gently heat up.

Ladle into cups or glasses as required.

If you have any left, you can make a fabulous mulled wine jelly or my favourite, peel and poach some pears. Make sure to use a small pan so that the pears are completely covered, or keep turning them so that they colour evenly until just tender.

Eat hot or cold with creme fraiche or ice cream.

Claire Foster



WI News

In August, instead of a monthly meeting, a group got together for coffee and brunch at Welbeck. Sitting outside on a very hot day, we enjoyed coffee, cake and other tasty food followed by a visit to the garden centre, art gallery, and farm shop.

Also, in August, a trip on a boat on the Grantham canal was organised. This was enjoyed by all who attended.

The September meeting was 'The demise of R.T. Parker' – a talk by Catherine Pincott-Allen. She told the story of one of her ancestors, a man who killed his mother and injured his father in the mid-1800s in Fiskerton. The man was tried, found guilty and sentenced to death. He was the last man to be hung in public.

October was a demonstration by Nigel Britton from Southwell Garden Centre who demonstrated the planting of winter pots. He was very informative and entertaining. One of his pots was put forward as a raffle prize and was won by Jackie Pitcher.

The November meeting was entitled 'Pyrography', a demonstration by Laura Douglass. Pyrography is the art or technique of decorating wood or leather by burning a design on the surface with a heated metallic point. Laura used wood in her art, showing her skill and expertise, and also offered items for sale.

Other events include a coffee morning at Reg Taylors (monthly), Book Club at The Full Moon, (approximately every 6 weeks), Craft and Chat - an evening at a members' house (venue changes each month). Other County events, where a team of 4 from MFR WI took part, were the County Quiz and a Curling competition.

Visitors are welcome at our meetings with a £5 charge for refreshments.

Meetings are held on the 2nd Tuesday of each month at The Arthur Radford Sports Hall, Cooks Lane, Fiskerton NG25 0UT.

Pilates Classes, with Cat Bagley (a qualified fitness instructor), are organised by WI, but are open to everyone, male and female. They take place at The Arthur Radford Hall on Thursday mornings, 10am to 11am. The cost is £6 cash payable as you attend. For further information contact Susan Bosworth on **07733 135175**.

Visit the MFR WI website: www.mfrwi.co.uk

Susan Bosworth

Contacts:

Jeanette Brownson: 07816 609913

Beryl Northcote: 01636 812579

Helen Boffy: 07515 280707

Morton, Fiskerton & Rolleston WI



In Memory of Nick Pearson

Many of us will remember Nick who moved to Rolleston in 1993 before leaving for Southwell just a few years ago.

Nick came to Rolleston, with Sandie, determined to do what he had always done; work hard, live life to the full, and enjoy and support the local community.

And he did just that. Whilst enjoying his time with family and friends, and his holidays, he also found time to do his bit for the community, Nick headed up the fundraising and installation of the new church bells, the building of the Jubilee Garden and the fundraising and rebuilding of the Village Hall. Of course, much of this fundraising involved organising village social events where Nick was in his element; enjoying himself and enjoying bringing people together to do the same.

He recognised that getting on with things, encouraging others, and making your community a better place, is a very fulfilling way to live - Nick lived a very fulfilled life.

Rolleston will remember him with fondness, with a smile, and with gratitude for all that he did for the village.

Gill Rowles



8th July 1944 – 30th September 2024



Residential & Commercial Architects

Renovations & Extensions

Bespoke Homes

Residential Development Sites

Barn Conversions

Listed Buildings

Green Belt Development

Commercial & Industrial

Education

Planning Consultancy



Chris Stanley - Championing Nordic Walking

Editor's note:

Many congratulations to our intrepid Rollestonian, Chris Stanley. You'll probably remember in previous editions of the Junction we have reported on her paintings being displayed at the OXO Tower in London and her thespian success with the 'Parky Players' and their award-winning performance at the Edinburgh Fringe Festival. Now we turn to her athletic achievements!



On September 13th, Chris competed in the World Nordic Walking Championships in Finland.

British Nordic Walking published an article about Chris which we reproduce here:

"A pioneering initiative is transforming the lives of people with Parkinson's disease by combining the therapeutic benefits of Nordic Walking with tailored support. For the past eight years, British Nordic Walking, in partnership with Parkinson's UK has adapted this technique specifically for Parkinson's patients.

A standout success story is Christine Stanley, a woman living with Parkinson's who not only completed the British Nordic Walking Instructor training, but now serves as an inspiration and advisor. Chris is passionate about offering hope, particularly to women with Parkinson's, as she challenges the misconception that it only affects older men."

Catherine Hughes, CEO of British Nordic Walking commented, "Chris Stanley, one of

our dedicated Nordic Walking Instructors, recently achieved a remarkable milestone participating in the INWA World Nordic Walking Championships in Finland. Living with Parkinson's hasn't slowed her down. Chris is now sharing her joy and expertise with others. Her resilience and achievements remind us that with determination, anything is possible, even the world stage!"

As Chris herself says, "I've now become the first accredited female Nordic Walking Instructor with Parkinson's in the UK. I'm delighted to be able to support more people living with the condition in the East Midlands. I believe with a positive mindset, regular exercise, and a healthy diet, you can slow progression. You have to accept, adapt and have ambition!"

Chris Stanley, talented artist, thespian and athlete - you are an inspiration to us all and we salute you!

Carole Chandler



New Year, New Nature!

“Why not share the gift of giving with wildlife this year?”

It might feel too early to be thinking about Christmas for some people (like me!), but the shops have had Christmas merchandise in them since August, so this certainly won't be the first piece you've read about Christmas before the advent calendar doors open.

Soon, our Christmas trees will be sat proudly in our homes, showing off their fancy lights and tinsel. But just weeks later those that aren't put back into storage for another year, will be sat in the green waste bin, or on their way to the local recycling centre.

Why not prolong the holiday spirit and share the gift of giving with wildlife this year? If you have a real Christmas tree, instead of putting it on the kerb try putting it in your own garden. Not only are Christmas trees invaluable for creating habitats within your gardens for birds, insects and amphibians, but when the trees break down and begin to rot, organic matter is produced which is an excellent source of nutrients for your soil. (Pine needles decompose into acidic mulch, so only place branches around trees that thrive in acidic conditions.)

The first step in letting nature help you recycle your Christmas tree is to put it anywhere in your back garden. Prop it up near another tree, against a fence or lay it in your garden. You can even redecorate it with pine cones filled with peanut butter, strings of peanuts and suet for birds to enjoy, these will provide food for birds while they find shelter in the tree, especially on cold nights.

By spring, the tree will have lost most of its needles, resembling a Charlie Brown Christmas tree (Google it). Then, simply cut the tree branches, lay them where spring flowers are starting to emerge and place the trunk on soil, but not on top of the flowers.



This will provide habitat, shelter wildflowers, hold moisture and help build the soil, mimicking what happens with dead trees in a forest. Toads and amphibians will seek shelter under the log, and insects such as solitary bees, will burrow into the wood.

By autumn, the branches and trunk will begin to decompose and turn into soil. Many of our Christmas trees, particularly spruce and balsam fir, have very low rot resistance and break down quickly. The more contact the cut branches and trunk have with the ground, the quicker it will decompose - drilling holes in the tree trunk will also speed up that process.

Our back gardens are ecosystems of their own and by leaving our Christmas tree in the back garden we can understand its life cycle and observe its impact and give back to garden biodiversity.

Graham Osborn

GasLine

plumbing, heating & air conditioning

- Boiler installations, servicing & repairs
- Burst pipes, water & gas leak repairs
- Plumbing work for kitchens
- Complete bathroom installations

"Michael came to my rescue when the boiler broke down and I had no heating or hot water. I have been using Gasline for 4 years now; I am registered disabled and they always go above and beyond. They make recommendations taking into account cost and usability and explain things properly. From answering my call through to the finished quality of their work, Gasline is reliable, friendly and professional."

Mrs D. Dulake, Skegby, Notts.

Call us on: 01623 871772 or 07805 525174

email: info@gaslineheating.co.uk

or visit www.gaslineheating.co.uk



**24-HOUR
SERVICE**

**NO CALL
OUT FEE**



Robert
JENRICK

MP FOR NEWARK

I continue to receive an influx of enquiries regarding large-scale solar farm applications in and around our area. I understand and share the concerns of many of my constituents and appreciate that fears have heightened in light of the news that the current Secretary of State for Energy Security and Net Zero, approved three large-scale solar farms in his first week of office, including the West Burton Solar Project, on the northern outskirts of my constituency.

My position on this matter has been clear from the outset. I want to take this opportunity to reiterate my views and reassure you that I remain fully committed to opposing the numerous large-scale solar farm proposals in our area.

I am not inherently against solar farms. I appreciate the important role solar energy will play in creating a sustainable future. However, we must deploy solar installations in a reasonable way, striking a balance with other interests and taking a pragmatic, not dogmatic, approach to reach our environmental goals.

Rather than industrialising our beautiful Nottinghamshire countryside, solar installations are ideally suited for rooftops, homes, offices, factories, and brownfield sites. The UK has more than enough space to deploy renewable energy without

compromising food security. It is essential that we protect, rather than sacrifice, our key agricultural land and rural communities.

New nuclear energy plants would be an efficient means of generating low-carbon energy while preserving prime agricultural land for domestic crop production. More broadly, on balancing energy and food production, it is important that we focus on getting the cheap and secure energy supplies we need because this is a large part of farmers' and rural residents' costs.

The solar farm proposals in our area are of an unprecedented magnitude and the scale is simply not acceptable. I have previously spoken on behalf of my constituents during the Parliamentary debate on large-scale solar farms where I voiced concerns and conveyed my objections to the relevant ministers. I remain dedicated to fighting for my constituents who will be impacted by these excessive developments.

I am always interested to hear the views of my constituents and greatly value your input on issues that matter most to you. Please do not hesitate to reach out to me:

robert.jenrick.mp@parliament.uk with any concerns or questions you may have.

Robert Jenrick

📞 **01636 612837**

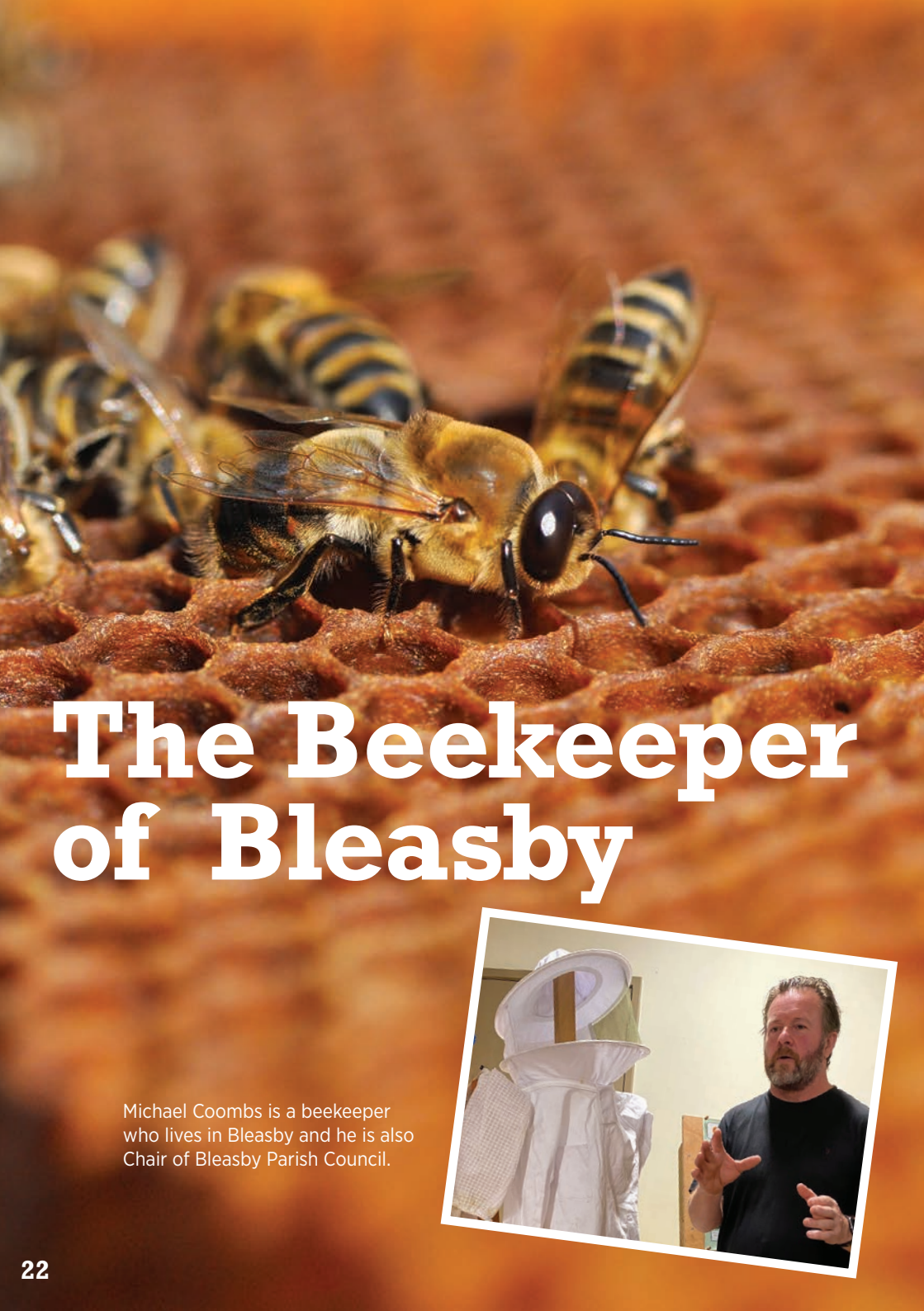
✉ **robert.jenrick.mp@parliament.uk**

29a London Road, Newark-On-Trent, NG24 1TN

📘 **RobertJenrickNewark**

🐦 **RobertJenrick**

www.robertjenrick.com



The Beekeeper of Bleasby

Michael Coombs is a beekeeper who lives in Bleasby and he is also Chair of Bleasby Parish Council.



Editor's note: Thanks to Michael for his highly entertaining and informative talk on bees on the 10th September. It was well attended and full of practical demonstrations to keep us on our toes and attentive! Michael has volunteered to write an article about bee keeping for a future edition of the Junction. In the meantime, we are happy to publish his message below:

"Thank you to the Rolleston Parish Council and to the Village Hall Committee for allowing my bee talk to take place in September.

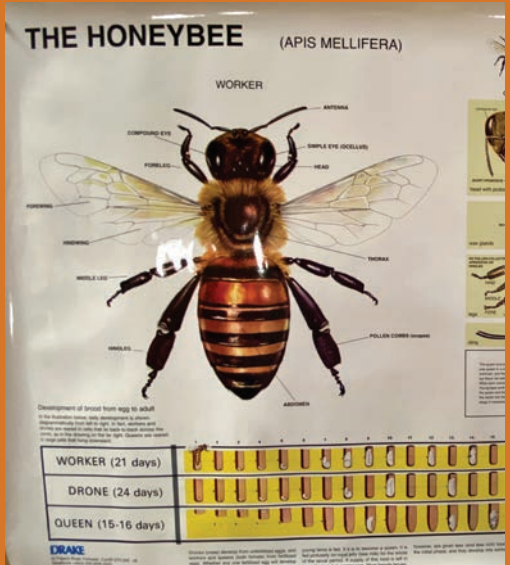
I've only just managed to catch up with everything with regard to the bees etc. I also wanted to thank the villagers who came and expressed an interest. The money that was given to me from the collection at the door was very much appreciated. I have put that money to good use in buying two new floors and a set of super frames for the beehives sited at Rolleston allotments, Staythorpe Road. I'm hopefully adding another two hives on the allotment in Rolleston early next year. The price for the floors and frames was £156.

Bee equipment can be quite expensive to start off. A full new hive normally costs about £700 by the time you've bought most of the components, but I do make a few bits myself to keep cost down.

Many thanks to everyone and if anyone needs any help in the future feel free to contact me or pass my contact details to others."

Michael Coombs

07805 007919 or
email: m.coombs77@btinternet.com





Tel: 07764 990563
Email: stevecookelectrician@gmail.com
www.stevcookelectrical.co.uk

- 18 years serving Southwell and surrounding areas
- All aspects of electrical work undertaken
- Installations, repairs, testing and certification

Renewable Technologies
Solar PV Installations Battery Storage Solutions
Electric Vehicle Charge Points
Energy Efficiency Upgrades of Lighting and Heating
Smart Home Automation
CCTV, Security Systems and Gate/Access Control



Spooky Goings-on...

Our younger residents enjoyed a Halloween Party on the 31st October at the Village Hall.

There was a disco, fancy dress, games and party food.

The event was a tremendous success with over 60 children enjoying the 'Spooktacular'. Sincere thanks to the organisers, especially Laura Bosworth, for organising such a great event.



Flags
Posters
Banners
Leaflets
Booklets
Invitations
Post Cards
Canvas Prints
Vinyl Graphics
Signs & Boards
Business Cards
T-Shirt/Clothes
Mugs/Glasses
Personalised Wallpaper

primeprint
design copy print promote

Unit 6 Rubys Avenue, Fernwood, NG24 3RQ
Tel: 01636 703680 / 07435 974297
Email: info@primeprintnewark.co.uk
www.primeprintnewark.co.uk



OPENSHAW

CARPENTRY AND BUILDING

- CARPENTRY AND BUILDING
- EXTENSIONS AND RENOVATIONS
- KITCHENS
- FLOORING
- WINDOWS / DOORS / BIFOLDS
- GARDEN ROOMS / PATIOS / DECKING
- ALL TRADES COVERED

For more information contact **Alex Openshaw**

T: **07866 712721** • E: **openshawliving@yahoo.co.uk**

rooms at ROLLESTON

Newly refurbished Guest House containing 5 letting rooms



- **4 DOUBLE ROOMS**
- **1 SINGLE ROOM**
- **ALL EN-SUITE**



Available to book on AirBnB
roomsrolleston@gmail.com

roomsatrolleston.com

Well done to Aimee

Aimee Robinson has gained a place at the Tokyo Animation College in Shinjuku, Tokyo, for a 3-year degree in Animation Production.

Aimee left Southwell Minster School last year with A*s in Art and Mathematics A-levels. She has been studying Japanese in Tokyo full time for a year to get to Japanese University Standard to be able to apply for her dream course which is fully taught in Japanese.

Aimee will start her course in March 2025 so by the time she has completed her studies she will have spent nearly 5 years in Japan. We are proud of her determination to get in her college of choice, which will hopefully lead on to a career in this area.

Mark Robinson



Leo & Lola

Editor's note: We love to feature a local romance story and this canine themed one is no exception!

Unfortunately this story got missed in Summer 2024 due to a glitch with emails - so we are delighted to have the space this issue to rectify that and to have an excuse to publish some puppy pictures.

Leo, a very handsome red cocker spaniel, had a planned date with Lola, also a local pedigree cocker spaniel. Both live in Rolleston.

Heather Brogan, owner of Leo, reported, "Five pedigree cocker spaniel pups were born overnight in February - 1 girl and 4 boys. Their Mum, Lola, did it all by herself - in fact several pups had been born before anyone realised! Michael and Jo Killingworth from Corner Farm Close are Lola's owners.

All pups were quickly snapped up and went to their forever home. One pup, called Ned, is now looked after by my daughter Amy and her partner George, who live in Hyde. Another pup from the litter stayed with Jo's family - and Jo's Mum is now the proud owner of Rosie."



Lola with Pups



Leo with his son, Ned



First Aid Training

An informative first aid course took place at the village hall on the 1st October. The training was provided by the charity, Newark Community First Aid. Approximately 20 villagers attended and as the photos show - they happily took turns between the roles of being 'patients' (victims!) or 'first-aiders'. Procedures were administered under the careful supervision of the instructors. The admission to the course was free but donations were collected on the evening for the charity. With thanks to the Parish Council for organising such a useful event.



Welcome

A warm welcome to the new residents at Bramble Cottage. We were delighted to receive the following message:

"We moved into Bramble Cottage recently. 'We' are myself, Donna Jordan, my partner, Wayne Orridge, our four year old Albert (Orridge) and Wayne's dad, David and our Doberman dog, Obi. We're very excited to be here and look forward to being an active part of the village for years to come. Looking forward to seeing you soon."

Harvest Festival

The harvest festival at the church was described as a 'packed house' and very enjoyable. We were delighted to receive this photo courtesy of Alec Jewski.



Congratulations



Congratulations to Jack Chandler and Chiara Martinelli, who got engaged in September.

Jack, who has been living and working in London for about 8 years, is a former resident of Rolleston. He is Carole and Dave Chandler's son.

Congratulations to Amy Brogan and George Kelsey who got married 18th October at Shottle Hall in Belper, Derbyshire. Amy is the daughter of Heather and Alan Brogan who live in Rolleston. Heather said, "It was such a fantastic day with everything planned to perfection. Amy and George met at The Minster School when they sat next to each other in Physics in year 10 and have been inseparable ever since. They live in Hyde with their puppy, Ned, and will honeymoon in South Africa next summer."



Rolleston Regular Events

Pilates

Cheryl Sheard • 07949 260032
1 hr classes return to village hall.
Wednesday 2:30pm
Contact Cheryl for details

Total Fitness

Jennie Overton • 01636 816800
Village Hall

Darts

Graham Osborn
07977 172707

GORGS

Bram Towse • 01636 813901
Gentlemen of Rolleston
Golfing Society

Book Club

Pati Colman • 07786 937266
pati.colman@icloud.com
Contact for times and venues

Indoor Bowls

Peter Salter • 01636 819197
Tuesday evenings, Village
Hall 7pm - 9pm

Dominoes at The Crown

Peter Salter • 01636 819197

Yoga

Mandy • 07773 551916
Pre-booking is essential for all classes
Monday: 10-11:30am Gentle Stretching & relax
Tuesday: 10-11:30am General Hatha Yoga

Wednesday Coffee and Lunch Club, Village Hall

1st Wednesday in the month at 12pm
2-course Pre-booked Lunch
To book: call **Amanda 07779561934**
£3.50 includes raffle ticket.

2nd Wednesday 10.30am
Coffee/Tea/Cakes/Biccies (free).

3rd Wednesday 10.30am
Coffee/ Tea/Cakes etc. (free)
Bacon Cobs (£1)

4th & 5th Wednesday 10.30am
Coffee/Tea/Cakes/etc. (free).

OPEN TO EVERYONE

Bell Ringers

Bryan Northcote • 01636 812579
Wednesday 7:30pm, alternating
between Rolleston and Upton Church

Note:

Please contact individual
organisers for bookings or to
check events are running in
the Village Hall.

Local services & businesses

JDP Windows - Window Cleaning Service	01636 816662
Steve Bosworth - Joiner & Building Contractor	01636 815542 • 07976 894449
Fiskerton Post Office & Village Shop	01636 830230
Turnbull and Sons - Professional Tree & Hedge Care	01636 816361 / 07970 633150 turnbullandson@outlook.com
The Old Barn at Field Farm - Arts, Entertainment	07834 689878
The Stable Salon - Ladies Hairdressing, Fiskerton	01636 830044
Gasline - Plumbing & Heating (24 hour service)	01623 871772 / 07805 525174
Harwood Decorators - Abs Chaaban	01636 815979 • 07788 962707 abs.chaaban@hotmail.com www.harwooddecorators.com
Morton, Fiskerton, Rolleston WI	01636812881/07733135175 susan.bosworth24@yahoo.co.uk • www.mfrwi.co.uk
Indigo Architecture	01332 541 691 • hello@indigo-architecture.co.uk www.indigo-architecture.co.uk
Rooms at Rolleston - Airbnb	07815 846773 • roomsrolleston@gmail.com www.roomsatrolleston.com
Nikky Green - Remedial & Sports Massage	07734 155240 • info@nikkygreenmassage.com
Alex Openshaw - Carpentry & Building	07866 712721 • openshawliving@yahoo.co.uk
The Crown at Rolleston	01636 925719 • hello@crownatrolleston.co.uk www.crownatrolleston.co.uk
Steve Cook Electrical Ltd	07764 990563 • stevecookelectrician@gmail.com
Jarvis Flooring Limited	07838 382859

Useful contacts

Flood Warden - Steve Bosworth
01636 815542 • 07976 894449

Parish Council - Bob Steele
01636 812463 / 07971 028801

Village Hall Chair - Julian Ellis
01636 831165

Village Hall Bookings - Lucy Kyte
07398 670139

Holy Trinity Vicar
(Vacant post)

**Pavements, pot holes, street lighting,
standing water: Nottinghamshire Council**
0300 500 8080

Church Warden - Julian Ellis
01636 831165

Church Treasurer - Peter Salter
01636 819197

District Councillor - Keith Melton
01636 672276

County Councillor - Sue Saddington
01636 704550

Member of Parliament - MP Robert Jenrick
01636 703269

Southwell Doctors
01636 813561

Minster Vets
01636 812133

Southwell Racecourse
01636 814481

Community Car Scheme
01636 611220

Police
Emergencies 999 • Non emergencies 101

Newark & Sherwood District Council
01636 650000

It's good to keep in touch

If you don't know what's going on, how can you get the most out of the village?

This is how we do it...

- If your email is registered with The Rolleston Junction, you are also added to the village Parish Council email list. This means you don't miss out on any important news. Your information is not shared with other third parties.
- Rolleston Village Facebook page - for instant updates.
- Rolleston Village web site - **rollestonvillage.uk**
- The notice board on Corner Farm.
- The Rolleston Junction - **rollestonjunction@gmail.com**
- We are a quarterly magazine dependent on our advertisers and sponsorship.
- We do need more donations and advertising income - if you have a business your advertising support would be appreciated. A quarter page costs just £30 per issue.
- It's your magazine and we welcome articles, announcements, snippets and photos from you. Send us an email or phone Carole on **01636 815089**
- New neighbours? Let us know and we'll pop round with a welcome package and a Junction!



HARWOOD

d e c o r a t o r s

Call Abs for a quote on **07788 962707/01636 815979**
or email **abs_chaaban@hotmail.com**

Fantastic local references can be given on request