

THE ROLLESTON CRIER

The Parish Council Keeping Villagers Informed

Summer 2005

ROLLESTON VILLAGE HALL

ITS OURS AT LAST Village Hall Keys Handed Over

The keys to Rolleston's brand-spanking new Village Hall were handed over this month and the building finally became our property.

Sincere congratulations are in order to all those involved in its planning and construction.

The Hall has every mod con and must be one of the most up-to-date community centres in the region, with facilities ranging from a professional kitchen, bar and atrium area, patio, office, small meeting room and, of course, the fabulous new hall itself with its moveable stage, lighting facilities and professional sound system (even a modern induction system for the hard of hearing), and dressing rooms.

The premises also boast internet access, and 24-hour full CCTV protection system.



Site Manager Hayden Wilson, representing contractors Baggaley and Jenkins, hands over the keys to Village Hall Chairman Cheryl Warwick. Looking on are village fundraisers extraordinaire, Gill Rowles and Nick Pearson.

See over page for the Crier's
exclusive pictures

YOUR CHANCE FOR A CLOSER INSPECTION OF YOUR VILLAGE HALL

You will be able to see the hall for yourselves at a special village open day this Saturday, September 10, between 2 - 4pm.

VE DAY CELEBRATIONS



A special village tea party rolled out the barrel on the Jubilee Garden to celebrate VE Day.

Wartime songs were sung with gusto among the banners and bunting, and a fascinating collection of old village photographs was displayed by Frank Mitchell.

Pictured here are four of the villagers who were living in Rolleston at the time. They are (from left to right); Arthur Beswick, Frank Mitchell, Eileen Beadles, Flo Good and her sister Evie

BLUE PLAQUE FOR KATE?

Victorian children's writer and artist Kate Greenaway spent many happy summers holidaying with relatives in Rolleston.

We already have a road in her name, Greenaway, but now moves are afoot to honour her with a National Heritage Blue Plaque to mark her association with the village.

Coun Frank Blacklock is currently investigating the possibility on behalf of the Parish Council

SUMMER INVASION OF THE GREENFINGERED ARMY

Most Rolleston residents were taken a little by surprise this summer when the village was invaded by over 600 gardening enthusiasts attending our village Open Garden Day.

Helped by one of the hottest days of the year, the visitors tramped up and down the roads, taking in some of the village's most beautiful gardens.

The event was organised by the Friends of Rolleston who raised over £3,000. Congratulations to Martin Fish and all who helped and took part.

NEW ROLLESTON BOWLS CLUB

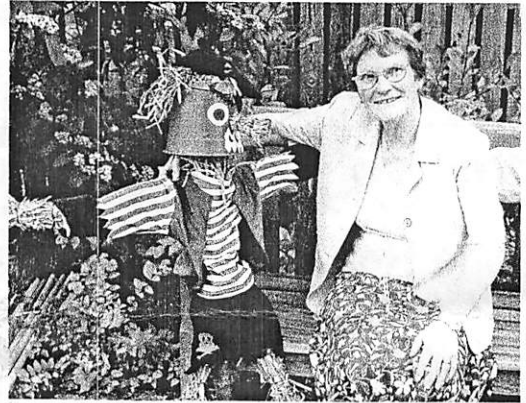
Rolleston Indoor Bowls Club is a wholly new members club founded in March 2005, with written constitution, rules and membership list.

Primarily for Rolleston residents, widening out to surrounding villages if membership numbers allow, all members of the previous club are automatically enrolled in the new.

We hope to start playing on Sept 13 with 3 brand-new mats of our own, as befits the lovely new hall, instead of the two old borrowed ones, which will allow 24 players to take part on any one occasion.

We are now fully subscribed, but vacancies do occasionally arise. If anyone is interested, please call me

Frank Mitchell: 813014



Margaret Blacklock with an entry made by one of her grandchildren for the special scarecrow competition at the Open Garden Day

SUNDAY RACING TRAFFIC CONTROL HAILED A SUCCESS FOR THE VILLAGE

The new planning conditions placed by Newark and Sherwood District Council on Sunday racing have now been operating successfully over three meetings.

Namely, a gate is closed at the Station Rd entrance and all traffic must enter and leave via the racecourse's private road. Parish councillors have been monitoring the situation and, with one or two rather rude exceptions, they have reported that the scheme is working successfully as far as the village is concerned - even on Ladies Day when the racecourse saw a record attendance crowd.

CORNER FARM: NEW DEVELOPMENTS

The development of Corner Farm is back on the agenda again after Newark and Sherwood District Council turned down Westmeath's original application for 18 houses and one barn conversion.

That application is now the subject of a planning appeal but, in the meantime, the company have put in a fresh application, this time for 11 houses and one barn conversion.

DECISION DEFERRED

The Parish Council were asked for their opinion at their last meeting but, after being advised by Ian Whitehead that N&S planning department were asking for more detailed information before making a decision, the Parish Council deferred its own comments until it too had more detail.

IMPASSABLE FOOTPATHS

The Parish Council is in the middle of a bitter ongoing battle with Notts County Council over the appalling state of footpaths in the village.

For some time now, Rolleston has been part of the P3 scheme (Parish Paths Partnership) in which the council informed NCC footpaths department what work was needed and the department undertook to do it.

Then the department decided to move the goalposts and place the responsibility of employing and overseeing the work onto the parish, with the department reimbursing its costs.

Feeling that the administration would be too a great a burden, the council opted for the status quo, knowing that NCC had a statutory duty to cut and maintain main headland paths.

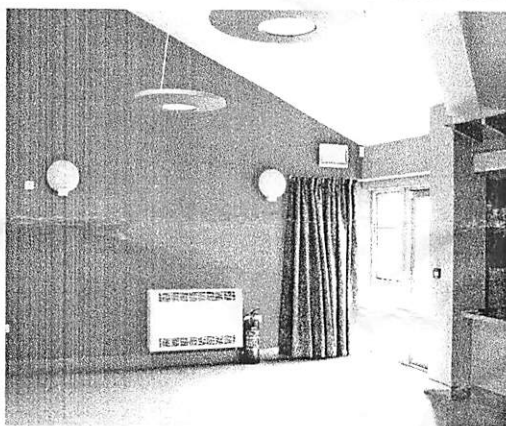
However, the department have now told the parish council that there is no money available for Rolleston.

The parish council have asked our county councillor, Susan Saddington, to look into the situation and have also discussed the possibility of calling in the ombudsman

TAKE A PEAK AT OUR NEW VILLAGE HALL WITH THE CRIERS EXCLUSIVE PICS

On New Years Day it was still on the drawing board. Now, only nine months later, Rolleston has a brand new £500,000 village hall.

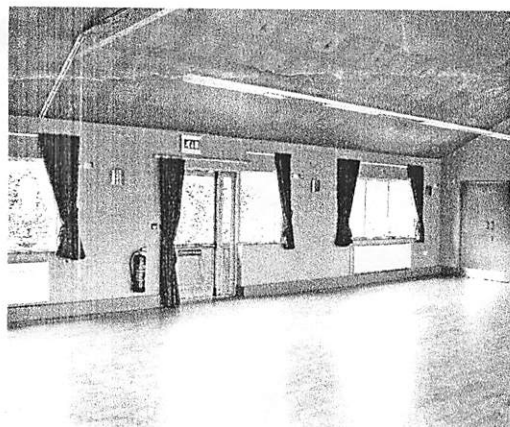
The vast bulk of the money was supplied through a DEFRA grant, but three families in the village stood guarantee on a total loan of £60,000 to fulfil the requirements of the original bid. Fundraising efforts have already cut that amount, but £40,000 is still owed to our three benefactors and the village hall committee have made that repayment their number one priority



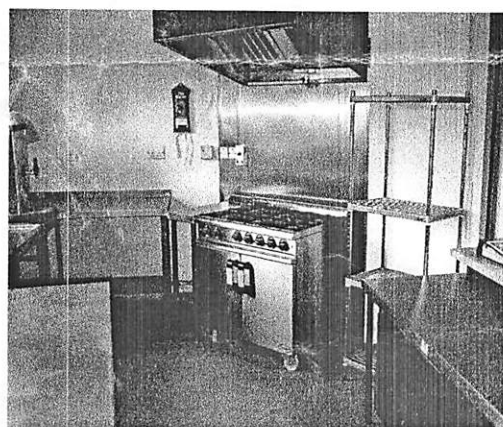
The Atrium/Reception area for coffee mornings, meetings and a bar area



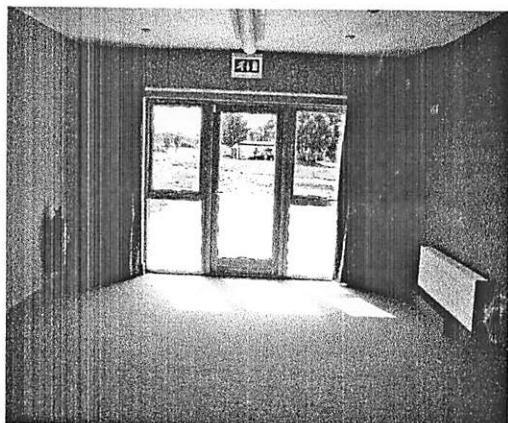
The bar, with all mod cons (including a wine cooler!) opens onto the atrium



The main hall has a moveable stage, stage curtains and a professional light and sound system



The fully equipped kitchen would make many a chef green with envy



The small meeting room is ideal for ten to 15 people around the table



The terrace area leading off from all the main rooms