

The Rolleston Junction

Edition 10 - Spring 2017



Learn about the birds and the bees in Rolleston... and have a look at our exciting new Creative Corner with a competition for youngsters..... !

website: rollestonvillage.co.uk

ROLLESTON'S REGULAR EVENTS

Indoor Bowls

Peter Salter
819197
every Tuesday evening
at the Village Hall

Darts

Jayne Carby (ladies)
07843 602458
Nigel Carby (gents)
07843 602376
Ladies Tuesday 8pm
(not during summer)
Gents Wednesday 8.30pm
(not during summer)

Seated Exercise

Cheryl Sheard
07949 260032
every Wednesday
10-10.30am

Skittles

Pat Sawyer
813771
(not during winter)

Total Fitness

Jeni Overton
816800
Monday and Wednesday
6-7pm, Sat. 10-11am
Village Hall

Share Club

Ross Thackrey
816133
once a month on Sundays
7pm at the Crown

GORGs

Nick Pearson
816382
Gentleman of Rolleston
Golfing Society
Regular outings

Bell Ringers

Bryan Northcote
812579
every Wednesday 7.30pm
alternating between
Rolleston and Upton
churches

Dominoes

Peter Salter (Capt.)
819197
Julian Ellis (Vice Capt.)
every Thursday evening
except summer)

Pilates

Cheryl Sheard
07949 260032
every Wed 7.15 - 8.15pm
and Fri 10 - 11a. at the
Village Hall
£6 per class

Rolleston Weekly Coffee Morning and Lunch Club



.....every Wednesday in The Greenaway.
1st Wednesday in the month : Noon. A two course lunch is available at a cost of £2.50, plus £1 to include a raffle ticket if desired. (small prize donations welcome)
2nd Wednesday: 10.30am. Coffee/Tea served with cakes or biccies.. (Free)
3rd Wednesday: 10.30am Coffee/ Tea and cake etc (Free) Bacon cobs (£1)
4th and 5th Wednesdays: 10.30am. Coffee/Tea/ Cakes (Free)
Gluten and caffeine free available. All welcome.
Contact: Amanda on 07779 561934

WANTED

ART WORK  CREATIVE WRITING

Announcing a ★ Creative Competition ★ for all young writers and artists - open to all young villagers and grandchildren of Rolleston residents !!



Age range: 5-21 years across various categories with prizes sponsored by National Geographic for Kids and Patchings Art Centre.



For full details of how to enter, see page 22 of the Spring Edition of the Rolleston Junction.

So, why not pick up a pen or paintbrush and have a go..?

Closing date for entries: 30th April

Prizes awarded at the Family Day on June 18th

Note: Grandchildren of Rolleston residents do not need to live in the area to enter the competition.

The Rolleston Junction team and our special panel of guest judges really look forward to seeing your entries!

Yes, it's your Rolleston Junction again - the Spring edition!

We'd like to welcome Carole Chandler to the editorial team. Amongst her many talents, Carole is a keen creative writer and is currently sharpening her skills in short story writing and poetry. Look on page 26 for an example of her work.

In this issue we have launched "Creative Corner". There is a wealth of creative talent in Rolleston. There are some talented amateur photographers, artists, musicians and writers in our village. We'd like Creative Corner to be the starting point for people to show and share their creativity. There are a lot of talented young people in the village. Don't feel ignored - this is very much for you as well!

This is a really exciting project - if you're up for it and want to find out more just contact the editorial teamCarole 01636 815089, Gill 01636 812936 or Marg 01636 816279.

The Junction belongs to the village - it's your magazine. If you have any suggestions, ideas for articles just contact the team.

Lastly, thank you to our advertisers and sponsors. You make publication of this magazine possible and are making a real contribution to our community.

Lotto News

Could your lucky number be one of these ... 25, 34, 52, 54 or 56?

These numbers are available to "own" as your entry to the Village Lotto. Every week a lucky winner receives a £50 cash prize!

Your only outlay is £2 per week (which is collected as £20 every 10 weeks) or you can pay by direct debit.

Checking the result is easy - the winning number is always the bonus ball number of that week's National Lottery.

Thanks to everyone who supports our community Lotto; it raises more than £3000 each year towards the cost of running the Village Hall.

We hope that our new residents to the village would be interested in joining to help contribute to a worthy cause.



Select your number by contacting Sandie Pearson on 01636 816382 or email sandie297@gmail.com

Congratulations to recent winners; Barbara Sale, Mick Killingworth, Ian Whitehead, Rob Squires, Marg Finch, Elizabeth Blakey, Rob Hibbert, Carole Chandler and Ross Thackery.

FORTHCOMING EVENTS !!

MARCH

- 6th Parish Council meeting - Village Hall 7.30pm
- 16th 'Women on the Verge of a T Junction' - Village Hall 7.30pm
Tickets 01636 816370
- 23rd 'Manalive!' - Robin Hood Theatre Averham
Tickets 07733 179986

APRIL

- 3rd Parish Council meeting - Village Hall 7.30pm
- 4th - 8th 'One Man Two Guvnors' - Robin Hood Theatre Averham
Tickets 07733 179986
- 16th Easter Sunday Fun Day - Racecourse
- 21st Free Friday at Racecourse - fundraising for Flower Pod charity
- 27th 'Ashley Hutchings in Concert' - Village Hall 7.30pm
Tickets 01636 816370

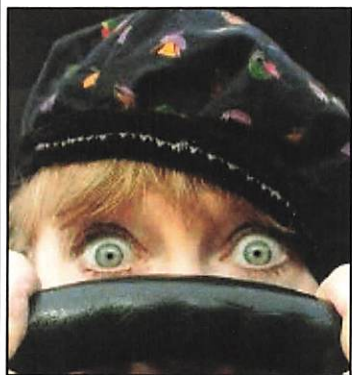
MAY

- 5th 'Learned Friends' - Robin Hood Theatre Averham
Tickets 07733 179986
- 8th Parish Council meeting - Village Hall 7.30pm
- 11th 'Gilbert (No Sullivan)' - Village Hall 7.30pm
Tickets 01636 816370
- 16th Countryside Evening - Racecourse

JUNE

- 5th Parish Council meeting - Village Hall 7.30pm
- 8th - 11th Gate to Southwell Festival - Racecourse
- 18th Rolleston Village Family Day
- 20th - 24th 'The Witches' - Robin Hood Theatre Averham

MsFts Theatre Company presents ...



'Women on the Verge of a T Junction'

Three women, three generations, three agendas, one lapse of concentration - all it takes to reduce a grown AA man to tears! No-one's hurt, but who is to blame?

When their cars collide at a T junction, three very different lives get as tangled as their bumpers, in an hilarious and poignant new comedy drama.

Thursday 16th March

Ashley Hutchings in Concert - from Psychedelia to Sonnets

Known as 'The Guv'nor' of British folk rock, he is the multi award winning founder of Fairport Convention and other successful bands - including Steeleye Span, the Albion Band, The Rainbow Chasers, and is Blair Dunlop's Dad. (Blair played for us in December).



He is also a talented wordsmith and in 2014 his first book 'Words Words Words' was published.

This show has been specially put together to celebrate his 70th year.

It will also include songs and music related to his life in music, beautifully brought to life by guest musician, Ruth Angell.

Thursday 27th April

The Foundry Group presents...

'Gilbert (No Sullivan)'



From the company that successfully brought to Rolleston, 'Big Daddy and Giant Haystacks' and 'Those Magnificent Men', this year the company show promises 'two mad Victorian Uncles acting out comic stories in the parlour.

Similar in style to Spike Milligan and Woody Allen, these stories have hilarious moments throughout, but are slightly tinged with occasional darkness.

Thursday 11th May

RAIL UPDATE



News from **ROGER BLANEY**

leader of
Newark and Sherwood
District Council

Whilst the work to automate our level crossings has largely finished, there are two issues that still need to be bottomed.

Firstly, there have been a number of barrier failures. The most recent (at least, to my knowledge!) occurred in early January at Staythorpe. This lasted several hours and the absence of temporary road closure signs at Averham, Fiskerton and Rolleston added to the inconvenience caused. The police have confirmed that temporary signage is the responsibility of Network Rail. Accordingly, I have asked that such signage is stored at one, if not all, of the compounds that

Network Rail has recently built at the crossings, so that it can be deployed rapidly if (when!!) needed. I am awaiting their reply.

Secondly, the barriers are – or, at least, appear to be – down for longer than they need to be. I have raised this with Network Rail's Route Managing Director and he has agreed to meet me at one of the crossings with a signalling expert, so we can explore what might be possible. I hope to report back to the Parish Council in due course.

However, it's not all bad news. Automation of the level crossings means it now becomes economically viable for East Midlands Trains to run an all-day Sunday service. At present, the first train from Rolleston to Nottingham leaves at 5.31pm – a full hour after the shops have closed! From May, the first train will leave at 9.35am – getting in before they have opened! Similarly, the first train to Lincoln will leave Rolleston at 9.58am – and there will be no need to change at Newark Castle. The timetable proposals are still in draft form, but I am confident that they will be confirmed with a minimum of change.

This improved service has been hard won. So, once again, I would say, 'let's use it, not lose it'.

Roger Blaney (Cllr) Trent Ward



ROLLESTON VILLAGE FAMILY DAY !!!

.. SAVE THE DAY SUNDAY 18TH JUNE



MORE FUN AT THE GREENAWAY (Our Village Hall)



Penny Lester

'Learned Friends' - provided much food for thought and audience



Blair Dunlop
- entertained with his own songs



Kate Haydock
(with Panda - raffle prize)

NEW SESSIONS IN THE VILLAGE HALL

Would you like to improve your general health and wellbeing, but don't feel upto a strenuous workout?

A new weekly **seated** exercise class is starting in **Rolleston Village Hall on Wednesday 25th January from 10-10.30 . £4 per session.**

No need to book - just come along.

The village coffee morning begins at 10.30 and you are invited to stay on for refreshments.

(Refreshments are not available on the first Wednesday of the month)

If you would like more information, please contact **Cheryl** on **07949 260032**



OUR LOCAL HERO



Dick - superimposed over his younger self

★ Dick (Curly) Brett M.M. ★

When war was declared on September 3rd 1939, Dick was an apprentice joiner, aged 20, at Portsmouth. As a member of the Territorial Army, he was required to 'down tools' and join up right away.

Most of his training was done with 59th Anti-Tank Regiment, and as D Day approached, Dick joined the 75th Anti-Tank regiment. This was part of the 11th Armoured Division that sailed from Tilbury to land on the Normandy coast at Beny-sur-Mer on June 12th, 6 days after D Day.

As a sergeant, Dick commanded an M10 Anti-Tank with a 5-man crew. Their first encounter was in the village of Cheux, where they disposed of 5 Panther Tanks and 1 Tiger Tank.

Then, at Hill 112, they were confronted by a Waffen SS elite unit and experienced a cruel baptism of fire for two whole weeks. They liberated several towns and villages around Caen and made an important breakthrough to the town of Flers.

Then, via Argentan, they made an overnight dash to capture Amiens, covering 90 miles in 24 hours. They reached Antwerp after a skirmish at the River Schelde, where 100 plus prisoners were taken, then crossed the Dutch frontier and advanced to Overloon.

It was here that Sergeant Taylor's M10 was knocked out. Dick managed to get him out whilst ammunition was still exploding inside – sadly he was already dead. Dick was badly burned on the hands, and for this act of bravery he was awarded the **Military Medal**.

They continued onto to Lubeck in North Germany, and were on Luneberg Heath when the Armistice was signed, and here, the 75th AYTR guarded 18,000 German prisoners. En route, they had come across Belsen, which was indescribable.

Dick and Eleanor were married 10 years after the war ended, and have visited Normandy on numerous occasions - including the sites where the battles took place - and have found the graves of all his comrades.



Dick celebrating his achievement with friends and family

When Dick and Eleanor have attended, they have been hosted by a French family who are now very close friends.

Recently, Dick's one surviving Officer put forward Dick's name to the

French Authorities as a

At every reunion, there has been a commemorative service just outside Flers, followed by a banquet in a nearby town or village.

worthy recipient of the French **Legion d'Honneur**, which he received in November.

TOM GERAGHTY & ASSOCIATES

Chartered Accountancy & Business Advisory Services

- * Bookkeeping
- * Accounts & Business Advice
- * Tax
- * Payroll & Pensions

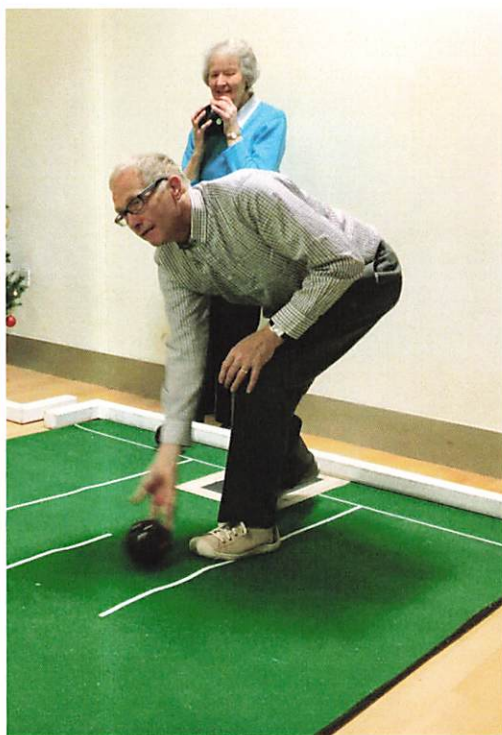


For all enquiries, please pop in to Northgate Business Centre, 38 Northgate, Newark. NG24 1EZ or call: 01636 642882 or 07715 606086

We look forward to hearing from you to discuss how we can help you manage and grow your business !!

Rolleston's Short Mat Bowling Club

Short mat bowling is a hugely under-rated sport by those who have never tried it. Rolleston has a thriving Short Mat Bowls Club, always ready to welcome anyone who wants to have a go.



obstructing the middle of the mat. This means that when you roll your bowl it has to go round the block to reach the jack. The object is to get as close as possible to the jack. Sounds simple?

The bowl, or wood, is weighted on one side which means it will always curve when bowled, enabling it to traverse round the block in the middle and will end up close to the jack. That's where the challenge starts!

You do have to think about the angle of your bowl, how hard you bowl and how to get round other bowls that are obstructing the jack.

The club welcomes beginners. It meets at the Village Hall 7.00pm every Tuesday and is really friendly. If you want to try it out they will welcome you and show you how.



This game is addictive and such fun!

The game is played on a mat 6' wide, 45' long. There is a the jack, a small yellow ball at one end and half way down there is an 15" wide block of wood

ROLLESTON FAMILY FUN DAY coming soon....



MY JOB



Jane Geraghty

Homestart is a local charity that helps families with young children deal with whatever life throws at them. Volunteers provide practical and emotional support to families with at least one child under 5, building up skills and confidence levels in the hope that in the future families will be able to access support from mainstream services.

Newark Homestart has also run groups for mothers with post natal depression and is now delivering the **Big Hopes Big Futures** program, working with local schools to get children school ready. It runs a playgroup every week. One of the features is the provision of a healthy breakfast for the children.

Over 6 years ago I responded to an article in the Newark Advertiser that highlighted the need for new trustees. I was attracted to the charity as many years previously, whilst working as a probation officer in Lincoln, I had helped establish a Homestart scheme and saw at first hand the support it provided to sad and troubled families. It was also part of my retirement plan to aim to do paid work half of the week and voluntary work the other.

Very soon, I was asked to chair the scheme, based on my track record of chairing complex partnerships, as a non executive and executive officer. My extensive experience of domestic violence, mental ill health, substance misuse and safeguarding were also highly relevant to the work with Homestart. This is particularly true now, as with the statutory services experiencing increasing pressures, Homestart is asked to support families with often complex needs.

Recent challenges have included the ability to recruit sufficient volunteers. In the past, most volunteers have not often been in paid work. In order to encourage volunteers who may be in work, we are considering offering training courses in the evenings or weekends.

Stretches in the statutory services, reduction in funding from these organisations and competing demands from charities for funding from other sources is a concern, but we refuse to be downbeat and remain ambitious to expand our scheme. We are now working in a consortium with other schemes in Nottinghamshire to explore other sources of funding.

Facts about Newark Homestart:

- * 33 volunteers of which
- * 24 volunteers are trained for home visiting
- * 99 families are supported including
- * 234 children

Can you help? For an informal chat contact 01636 705011



SUE SADDINGTON

As I write this report, I am sure we are all looking forward to the Spring - with lighter nights and warmer days.

Christmas is now a distant memory. I was pleased I was invited to pop into the Seniors' Christmas lunch. The ladies in the village cooked and served a wonderful meal which was enjoyed by all, whilst the men ensured that everyone had a glass of wine.

To add to the Christmas fun, there was a quiz and we all enjoyed singing Christmas Carols.

Just prior to Christmas, I enjoyed another evening with residents - singing carols around the tree, and afterwards enjoyed warm hospitality from Tony and Michelle, not to mention the wonderful mulled wine made to Michelle's special recipe.

During the last 12 months, the wider Environmental Weight Limit was granted around Southwell and neighbouring villages. This had an unwanted effect on Rolleston, by allowing larger vehicles to travel through the village to the racecourse.

Finally, after a couple of meetings with Highways, they agreed to erect signage suggesting a direct route to the racecourse, avoiding horseboxes driving via Station Road to the race course. I believe this has been reasonably successful.

I continue to lobby Highways regarding the state of Staythorpe Road.

Highways have now told me they are looking at a scheme on Staythorpe Road. This has not been approved yet, so is still not a 100% certain, but I am hopeful.

Highways are also looking at addressing the worst parts of Station Road at the same time. If funding allows, they are hoping to be able to accommodate some works.

The County Council Elections will be held on May 4th this year.

Once again the Boundary Commission have altered the boundaries. However, Rolleston stays within the new Farndon and Trent Division, which now includes approximately one third of Newark.

I hope to retain my seat for the Farndon and Trent Division. Your hard working Parish Councillors and I will then be able to continue to make improvements within the village.

Kind regards,

Sue Saddington

District Councillor for Muskham

County Councillor for Farndon & Muskham

Busy start to the year continues at Southwell

It has been an extremely busy start to 2017 at **Southwell Racecourse**, with nine meetings in January and a further four in February taking place, and the show doesn't show any signs of slowing down in March and April.

March brings another nine fixtures, including the **Cheltenham Double Headers** on **14th and 15th**, in which all the races from the Cheltenham Festival will be shown live on the big screen, to run alongside action from Southwell of course.

April sees the return of an “**Easter Sunday Fun Day**” raceday on **16th April** before our **Free Friday** fixture in aid of Reach on **Friday 21st April**, which will also feature live music after racing.

Countryside Evening promises to be another cracker on **Tuesday 16th May**, plus some other new feature fixtures in the calendar including **Nottinghamshire Sports Day** on **Monday 28th August** and **Oktoberfest Raceday** on **Sunday 22nd October**.

Family Fun Day, which will once again be sponsored by the Chad newspaper, takes place on **Sunday 16th July**. It is always a very popular fixture indeed and it will be no different in 2017 with many families from the local area enjoying a big day out.

The **Advertiser Ladies Day** is the jewel in the racecourse's crown however, on **Sunday 20th August**. In 2016, the day

broke a previous record crowd for the racecourse, with 8816 people coming through the turnstiles for a fun filled raceday packed full of exciting things - such as a fashion show and live music after racing.



For more information on all of the upcoming fixtures at Southwell, please visit www.southwell-racecourse.co.uk or contact Will Bowler – Marketing Assistant at Southwell Racecourse. Office number 01636 814481, email: wbowler@southwell-racecourse.co.uk

ROBIN HOOD THEATRE - AVERHAM

MANALIVE!! : BOX TALE SOUP



Beacon House, a broken down boarding establishment, and its bored, brooding tenants, are about to receive a visitor... someone who will turn their little lives upside down and show them a world of wonder they had long forgotten.

But what if their new guest is not all he seems? What secrets lie beneath that bright exterior? How can you trust a man whose name... is Innocent?

Manalive! is a new adaptation of the novel by G.K.Chesterton. This unusual, life affirming tale leaps onto the stage with beautifully hand crafted puppets and stunning original music.

23rd March 7.30pm

4-8 April 2017

**one
man
two
guvnors**

Ginny Davis
Productions

A beautifully crafted, atmospheric and truly captivating courtroom drama with echoes of Twelve Angry Men and the BBC's Silk, lifting the shroud of secrecy surrounding the moral quandaries and machinations of a high-stakes criminal trial.



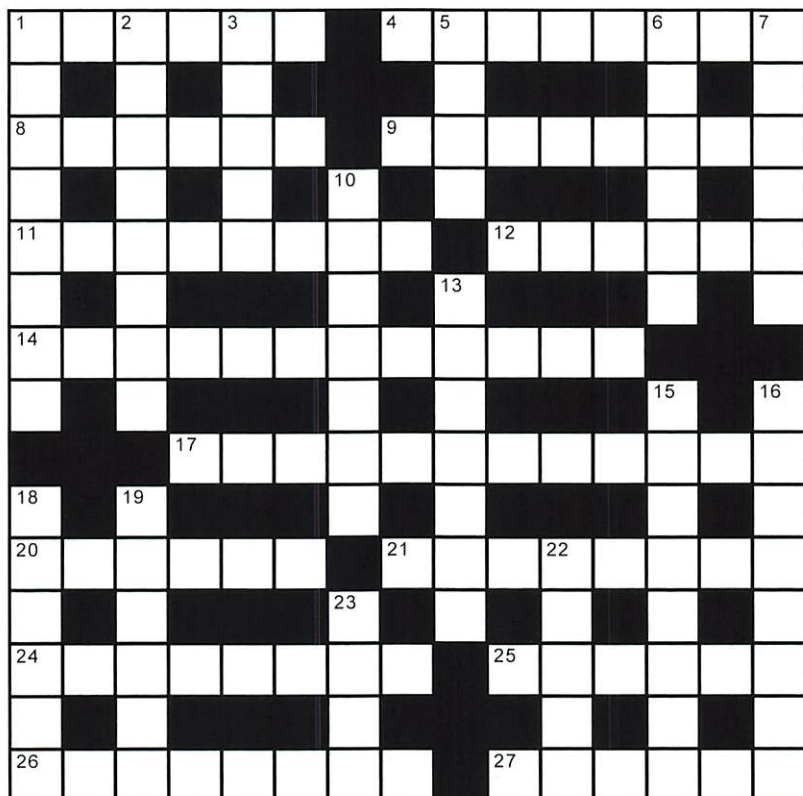
5th May 7.30pm

THE WITCHES

-

20th - 24th June 7.30pm

Tickets from £8 Box Office 07733 179986



ACROSS

- 1 Sad bee (anag) (6)
- 4 Sort of green banana (8)
- 8 Dance style (6)
- 9 Old star (3,5)
- 11 Correct, deserved (8)
- 12 Trial (6)
- 14 Vegetable (4,2,3,3)
- 17 Fear a warm pot (anag) (9,3)
- 20 Sum (6)
- 21 Polishers (8)
- 24 No light (8)
- 25 I'm a can (anag) (6)
- 26 Green veg (8)
- 27 Catarrh (6)

DOWN

- 1 Take away (8)
- 2 Parable, analogy (8)
- 3 Happening (5)
- 5 Long veg (4)
- 6 Pretty shrub (6)
- 7 Stinger! (6)
- 10 Tiny seed, strong flavour (7)
- 13 Heal up (3,4)
- 15 Hunger (8)
- 16 Pepper (8)
- 18 Upside down tree (6)
- 19 Grand Prix (6)
- 22 Rather wet! (5)
- 23 Male animal (4)

PARISH COUNCIL NEWS

Spring is a particularly busy time of year for the village's Parish Council.

This is the time of year when the annual accounts of income and expenditure for the financial year coming to an end are being finalised before being subject to careful independent scrutiny, and the Councillors' attention turns once again to the important responsibility of setting the budget and precept for the forthcoming year.

With a total precept of just £6,250 for the full current year, the Parish Council has to exercise considerable skill to allocate this relatively small sum effectively to maximise its impact across the Council's wide financial commitments towards maintenance of parish assets, clerical support, insurance, health & safety etc, whilst the whole time maintaining control over its fiscal responsibility to manage the annual precept within budget.

In the coming financial year, the Parish Council will have a particularly tricky job to allocate the budget effectively, with parishioners expressing a keenness to see the Parish Council support various initiatives to enhance the appearance of the village against a background of reduced services from statutory agencies, particularly in the areas of highways maintenance and policing.

One area of cost saving which the Parish Council has focussed on was to explore ways of reducing the proportion of the budget spent on clerical support. Historically up to one third of the budget precept has been spent on clerk services, and following a trial period, the Parish Council is now looking to adopt a new approach to clerical support whereby the administrative roles will be provided by Councillors in-house, with financial and governance responsibilities supported by independent external specialists. The hope is that this approach will halve the cost of clerical support, freeing up funds to allocate to more beneficial projects.

Another area has been the re-tendering of the Parish Council's land maintenance contract, the cost of which represents the largest cost element within the budget. For the first time, this contract will include maintenance of the Corner Farm land, although the cost of the latter is financed by a separate dedicated capital account, and does not impact on the precept.

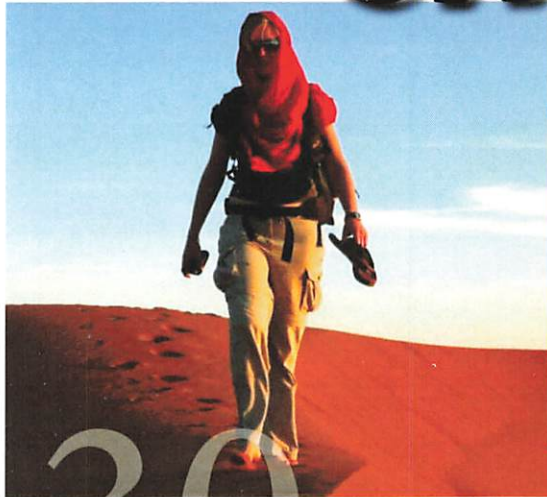
The Councillors look forward to seeing you at the monthly meetings, held at 7.30pm in the Village Hall on the first Monday each month (excepting August).

Tim Harries (Chair of Parish Councillors)

GOOD LUCK IF YOU'RE GOING ON THIS



SAHARA DESERT CHARITY TREK



18-27 March 2017

adventurous people needed to help us raise
thousand pounds as a celebration of
years of hospice care in Newark

Self Funded Option: £995 including international flights

Sponsorship Funded Option: £250 personal deposit + £1,600 minimum

To find out more about this amazing opportunity,
please contact Leza Burton - Event Coordinator on 01636 610556
leza.burton@beaumonthouse.co.uk



An event to raise money for Beaumont House Community Hospice

For further information please contact the Fundraising Team on
01636 610556 fundraising@beaumonthouse.co.uk or visit
www.beaumonthouse.co.uk/events
Registered Charity No. 1025442



beaumonthouse



beaumonthouse

..... THERE IS STILL TIME TO REGISTER.....



Christmas in Rolleston

Every year the Seniors of Rolleston meet in the Village hall and enjoy a big, delicious Christmas lunch starting with sherry and accompanied by large amounts of very moreish wine.



This year there were forty six at the lunch, devouring food and wine, singing carols, enthusiastically led by a talented vocal trio of Marion Turner on keyboard, Mary Wilkinson and Pattie Coleman (vocals). Angela produced a challenging quiz!

As always, a big thank you to the enthusiastic band of helpers a good time was had by all!

In December we had our annual gathering for Rolleston Carol singing round the tree, before retiring to Tony and Michelle's at the Manor for some very welcome mulled wine, sausage rolls and mince pies, along with the chance to thaw out, chat and wish each other a Merry Christmas.

What a lovely evening!



VIEWS OF ROLLESTON ... DAYS GONE BY



Do you recognise The Crown ?

Photo kindly contributed by Frank Mitchell

ROLLESTON BOOK GROUP

Rolleston Book Group was formed a few years ago. We are a group of women living in Rolleston and surrounding villages, united by a love of good books, good company, good food and good wine – not necessarily in that order!



We meet at each other's houses, approximately once a month. We democratically decide on which book to read over the following month, which makes for a very varied selection.

Sometimes we watch the DVD of a book we've read, visit the cinema and occasionally just go out for a meal with little mention of books at all! The books are always available either on Kindle or in paperback to keep costs down.

Our book choices range from historical through thriller to social commentary. Recent books include "Me Before You" by Jojo Moyes, "The Girl on the Train" by Paula Hawkins, "The Little Paris Bookshop" by Nina George and for our Christmas meeting, "A Christmas Carol". Our next book choice is "The Siege of Krishnapur" by JG Farrell.

We are a very diverse, but very friendly group. If you want to join us, please contact me either by email michelle.hillary@hotmail.com or on my mobile 07818 044788.



CLAIRE'S - Asparagus 3 Ways

Hopefully, local asparagus will soon be available, and I like to make the most of it - for the few short weeks that it is plentiful.

To really appreciate it, I tend to serve it as a starter, and this selection always goes down well - usually served on a large platter for everyone to dive in as they choose, - especially good if it is warm enough to sit outside with a glass of white wine!

Prepare the asparagus in the same way for all these recipes. Buy as fresh as possible, and, if not using straight away, cut off the ends and stand the asparagus in water (just like a bunch of flowers). When ready to use, take hold of each stem at both ends and bend the stalk, it should break at the point between the tender and tougher bit. You can then even up the lengths if you like.

Asparagus wrapped in Pancetta

Wind rashers of pancetta or parma ham around the individual stems, then grill until crisp or bake in the oven. Don't overcook. The pancetta will harden up as it cools slightly.

Easy Asparagus Pastries

Roll out a sheet of all butter puff pastry and then lay the asparagus in rows on top. Sprinkle with parmesan cheese and bake in a hot oven for 10 - 15 mins. Cut into fingers and serve warm. Cut into larger squares for lunch with a salad.

Asparagus Tarts

Make toastie cases by cutting circles out of thin sliced bread and press into small patty tins brushed with melted butter. Brush with more melted butter and bake until crisp. For the filling - chop up some asparagus, saving the tips for garnish, cook for a minute or two only and mix with hollandaise sauce, either homemade or bought is fine.

Hand round and enjoy!



CREATIVE CORNER... !!!

Are you are budding artist or writer?

*Announcing a
creative competition
for young
residents*

Calling all children and young adults who live in Rolleston!

We know that Rolleston's definitely got talent and we'd like to discover and encourage it!

Exciting news ... this issue we are launching a **Young Person's Competition** open to all young villagers as well as the grandchildren of Rolleston residents aged between 5 and 21 years of age.

There will be a **painting** and a **writing** competition across the various age categories.

The winners will be presented with prizes at the **Family Day, Saturday 18th June**, and their work will be displayed in the Village Hall, Southwell Library and on our website.

Prizes generously donated by National Geographic for Kids and Patchings Art Centre.

Paint a picture or write a piece of poetry or a short story depicting the themes of either **"My Family" OR "Village Life"**

Your writing or painting could be about local scenery, where you live, the park, where you walk, the school bus, your family, your friends, the church, the pub, it could even be about your pet! These are just some ideas - you can probably think of many more based on these two themes and only limited by your imagination.



Artwork to be submitted up to A4 size please and mixed media will be accepted e.g. watercolours, pastels, collage etc.

Written entries not to exceed 500 words and you can submit them either printed or handwritten on A4.

Age categories (by school year):

Primary: Yr1-Yr6 (5-11 years), Secondary: Yr7-Yr11 (11-16 years) and Young Adults: Yr12-Yr13 (and beyond - up to 21 years).

Only one entry per person please and your submission must be all your own work

The **deadline** for entries is **April 30th** and winners will be notified by the end of May.

So get inspired and we look forward to receiving your entries! There will be a prize awarded for best painting and best creative writing for each age group.

Please give your piece a title and remember to add your name, age and a contact telephone number on the back. Submit your work to: Carole Chandler, 7 Holly Court Rolleston.

Entries will be judged by the Rolleston Junction production team and some guest judges.

CHURCH NEWS

What a wonderful village turn out for the Christmas Eve Carol Service - with a selection of readings, and Carols suggested by the various Village organisations. The combined collections of Christmas Eve and Christmas Day enabled us to send a donation of £225 to 'Bungoma Calling'. The donations of clothing and other practical items for the Newark Women's Refuge have now been delivered.



The donation box will still be retained in the Church porch to help support this needy cause.

At long last the Church is now open during the day for those who wish to go in for a quiet moment. There are a number of people who have volunteered to go on the opening and closing rota.

If you wish to join them, please contact a Church Warden.

Details of the church services can be found in the Tatler and on the church notice board.

Everyone is welcome.

Ben Morgan Painting & Decorating

M: 07775 888851 T: 01636 831333

E: ben@morganpainting.co.uk



Domestic

Commercial

Rented

Insurance



/BenMorganPainting&Decorating

Spoiler Alert! *Answers to Penny's Puzzle (Page 15):*

Across: 1 Seabed, 4 Plantain, 8 Ballet, 9 Red giant, 11 Rightful, 12 Ordeal, 14 Corn on the cob, 17 Marrowfat pea, 20 Amount, 21 Cleaners, 24 Blackout, 25 Maniac, 26 Broccoli, 27 Phlegm.

Down: 1 Subtract, 2 Allegory, 3 Event, 5 Leek, 6 Azalea, 7 Nettle, 10 Mustard, 13 Get well, 15 Appetite, 16 Capsicum, 18 Baobab, 19 Monaco, 22 Awash, 23 Cull.

FRIENDS OF REACH

Would you be interested in becoming a 'Friend of REACH' - previously 'Southwell Care Project'?



people with learning and other disabilities.

Volunteers will be needed to support an event at **Southwell Race Course** on **21st April**.

If you can offer any help or need more information, please contact

Debbie Baldock on **01636 819007**.

Many thanks

Reach Learning Disability are looking for people willing to support the various fundraising activities they provide throughout the year - either on a regular or casual basis depending on your availability.

This may include cooking or baking for an event, doing a supermarket bag pack, street collection, or manning a stall at one of the community events held in and around Southwell throughout the year.

The Newark branch of Reach raised an amazing £5,000 last year with their fundraising efforts, and these funds are vital to continue the important work of this fantastic charity which supports



COUNTRYSIDE SIGHTS AND SOUNDS

A very familiar prelude to summer has not been heard nor seen in the vicinity of what my neighbours and I have dubbed 'the cuckoo tree' for the past few years.

We now call it the 'buzzard tree' - something which, back then, would have been unheard of. I suspect, that should a male cuckoo return, it would be harassed by the crows as well as the buzzards and move on elsewhere.



Red Kite

Change is clearly afoot! Last April, a single Red Kite flew over Rolleston, possibly on a scouting mission, so hopefully it will back this year. Look for a soaring bird, larger than a buzzard, with a forked, often twisting, rufous red tail and 'tatty' wing tips, with wings held in a rounded 'm' shape.

Early Spring sees to the return of the Chiffchaff, whose call announces its presence, but don't be fooled by the Great Tit's mimicry (although they don't always remember the last 'chaff').

There's much of our feathered residents and visitors contribute to the ambience of the village if we take time to watch and listen.

Margaret Hodgson.

Of Semaphores and Signals

This splintered shelter holds tales of other eras,
What good mens' hands have pulled these iron levers?
The age of steam with specks of soot in billowing shrouds,
Has given way to the Information Age,
With data stored in smokeless zone and smut-free cloud.
But years ago, did this hut shimmer in the haze of summer and disappear in Autumn mist?
Did the snow and fog of winter cloak your old timber,
As passing engines clanked and hissed ?



Look backwards down converging lines,
See Bert the signalman - his lantern bright at dawn,
As he whistles his way to work, his legs still heavy from sleep, his pallor'd yawn.
Yet ready to start his shift
and greet the six-oh-five with charm,
As he puffs on his first Navy Cut and waves a cheery arm.

What delights did his knapsack contain,
When after had passed the ten o'clock train ?

Was it time to mash the tea ?

Did he push back his regulation cap and settle down with his "bit o' snap"?
In his towered domain did he spy on crazy hares or spot a rusty fox,
Yet keep one beady eye on clunking clock in his signal box?
Did he dream of travelling to the Big Smoke on his Great North Eastern Railway pass,
Parading Elsie on his arm through palaces and parks,
As if she were Queen and he top brass?

Now Time's one-armed bandit has pulled the iron lever for one final phase,
Watch the spinning wheels of some forgotten age in engine shed with rolling stock
from Derby's lathe,

Hear the bellowed chuff - Chuff - CHUFF as cranking pistons gather pace,
Now Doppler's change to diesel whoosh then electric hush,
As you pass through time and space.

Travel past that shabby-chic-like-shelter-by-the-rail,
See it now as sacred place -
Not a cyst; to be lifted and removed without a trace.

"Out, damn Hornby-spot! Out with your legacy of grandads, fathers, sons!",
Say the faceless ones - yet its loyal servants survived wars and bombs and foreign
guns.

You thought the clock your friend,
A ticking metronome for sounding out the seconds,
But soon you'll make way for unmanned days,
As automatic barriers and progress beckons.

Oh white van man!

Waiting on the camber by amber flashing cantilevered crossing - you'll see trees and
woods,

You'll draw an imaginary dotted line around a skyline where once a signal box stood,
And while you tap your fingers and rue the speck of life you waste
Will you remember Bert and his tapered branch line of men long since passed?
Gaze now at sunset -

There beyond the sleepers of glinting tracks,
Criss-crossing the shadows of the signal masts,
You'll see their faded silhouettes,
Still waving and levering away,
Whilst swirling Autumn leaves lament their semaphoric days.

NEWS IN BRIEF.....

Thank you ... **May Fearn** of Rolleston would like to thank her family, friends and neighbours who helped to make her 90th birthday so memorable. 'The cake, cards and company were lovely'!



Abs-olutely Great Job Rolleston Decorator, **Abs Chaaban** is pictured lovingly restoring Rolleston's cherished retired phone box. Now the home for our Defibulator it really sets off the Jubilee Garden. Nice Job Abs!

Our best wishes to **Nigel and Jayne Carby** following Nigel's wrestle with a set of handlebars during a cycling holiday in Cyprus. (Ouch!). Sincere wishes for a speedy recovery.

Breaking News The **Rolleston Domino Team** has finally been victorious! 2017 is off to a great start with their first win in.... well... let's just say ...it's been a very long time !!

Nick and Sandie Pearson would like to thank everyone for their kind wishes and support during Nick's sudden illness abroad.

Now back at home, Nick said, "Everywhere I go, people have taken such a kind interest in my well-being and I have found it genuinely overwhelming. On behalf of the Pearson family - a sincere Thank You."

CONGRATULATIONS..!!

... to **Sally and Brian John** on celebrating their **Golden Wedding Anniversary** on December 28th 2016. They celebrated on the actual day with a party held at the National Civil War Museum, Newark, with family and their old bridesmaids and the groomsmen.

All the guests loved the venue

and enjoyed being greeted by a Cavalier and a Parliamentarian as well as being free to wander through the galleries.

We would like to wish **Chris Stanley** a speedy recovery - hope to see you jogging across the fields again soon Chris.



LOCAL SERVICES AND BUSINESSES

JDPwindows	Window cleaning service	816662
Chilli Bobs	Rolleston's own chilli farm	0790 1820914 chilibobs.co.uk
Lucy's Bees	Local honey and beeswax candles	816882
Arne Colman	Village Handyman	813260
Meadowfield Camping and Caravans		07710 267969 or 07812 353622
Racecourse Farm	Bed and Breakfast	812176
Brambles	Stabling, grazing, schooling	816800
Steve Bosworth	Joiner & Building Contractor	815542 or 07976 894449
Robert Marshall Landscaping		812647 or 07702616664 info@robertmarshall-landscaping.co.uk
Fiskerton P O and Village Shop	Veg from Field Farm	830230
Rolleston Kitchen	Home made cakes, biscuits, treats	07814 546267
Elite Beauty - Lizzie	Treatments, massage, nails	07971507798
Penny Lester	Child minder, Cleaner, Dog Walker	814242
Amanda Hillary Personal Training		07958 109324 amandahillarypt@gmail.com
Gurkha One at The Crown		819000
Harwood Decorators	- Abs Chaaban	815979 or 07788 962707 www.harwooddecorators.com
Bramley Pips Nursery & Pre-School		0775116280 bramleypips.co.uk

If we've missed your business out and you would like to be included in the next issue, please contact our editorial team on rollestonjunction@gmail.com



BEES IN ROLLESTON

In April, next to a blackthorn sloes hedgerow ... or in June, next to a bramble bush ... or July, under a large lime tree ... you may well hear a buzzing. You can't see anything ... just hear a buzzing. This is because bees are calmly at work, collecting nectar to turn into honey or pollen.

Honey bees produce honey - different flavours, consistencies and colours. Lime honey is extremely delectable – subtly sweet and great in salads or drizzled over baked salmon just before serving, whilst rape seed honey is a good baking honey.

The bees love the taste of lime trees, and these fill a natural gap between summer and autumn flowering plants. So, on a warm sunny day in July, as many as 40,000 bees might be in a tree. But, what do the local hives in Rolleston really do for the average Rollestonian? Well, farmers pay beekeepers to put bees on their land when the crop is flowering, because it can increase the crops yield by 300%. So, thinking of our new local allotments, how fantastic is it that we have bees on it. I wouldn't be surprised to hear of award winning produce and competition entries at the next Southwell ploughing match.



So, what veggies and fruits can benefit from bees? The list is crazy long, but to name a few - carrots, cucumber, cauliflower, turnips, asparagus, onions, strawberries, gooseberries, raspberries, black/red/white currants, and every type of bean needs bees and others to pollinate.

In our gardens, flowers smell nice and look pretty, but they don't do any of this for our benefit. It is all to attract the pollinators. Flowers would not

even exist without the bees. When a bee pollinates a flower, the flower is more likely to grow and produce more flowers next year as it knows it will be pollinated. Be warned, this is not true for all flowers. Some flowers have been genetically modified to unnaturally have two flowering heads. They look great the first year, but with extra energy needed to make 2 heads, they do not make as much nectar/pollen for the bees and bees are less likely to visit these flowers and so the flowers do not do as well year after year.

Lucy Jeweska

Useful Contacts

Flood Warden

Steve Johnson 819181

Allotments

Bob Marshall 812647

PC

Steve Johnson 819181

Village Hall Chair

Julian Ellis 831165

Village Hall Bookings

Peter Salter 819197

Church Wardens

Bryan Northcote 812579
and Peter Salter 819197

District Councillor

Roger Blaney 830743

County Councillor

Sue Saddington 704550

Member of Parliament

Robert Jenrick 703269

Southwell Doctors 813561

Minster Vets 812133

Southwell Racecourse 814481

Community Car Scheme 611220

Robin Hood Theatre

Box Office 07733179986

Police emergencies 999
non emergencies 101

For all queries relating to pavements, pot holes, street lighting, standing water: Notts. Council incident no. 0300 500 8080

Fiskerton Village Shop

*The Stable Salon Hair Dressers
&
ALH Leather Saddler*

Few villages in Nottinghamshire have freshness, quality and convenience so neatly wrapped on their doorstep. Available at times to suit local shoppers. The shop opens seven days a week.

Monday – Friday - 6am – 7:pm

Saturdays – 6am – 6pm

Sunday – 7am – 5pm

Services –

General Convenience Store, Hairdressers, Leather Repairs, Lottery, Post Office, Health Lottery, Dry Cleaning & Repairs, Horse Rug Cleaning & Repairs, Photocopying

Products –

Fresh Laid Eggs (From John's Chickens on the Farm), Sally Jane's Cakes, Milk & Cream, Athley's Fresh Bread, Priced Marked Items, Sweets & Chocolates, Greeting Cards, Stationary, Selection of Cheeses, Meats, Leather Goods, Ice Creams, Fruit, Vegetables (Claire Fosters), Frozen Foods, Sausage Rolls, Pasties, Drinks, Southwell Vintner Wine, News Papers, Magazines, Logs, Coal and more...

Stable Salon Hairdressers - Call - 01636 830 044

KEEP IN TOUCH

There are 3 holders of the village email list - the Rolleston Junction editing team, Julian Richardson for the Village Hall and Christine Salter for the Parish Council. Between us we have a pretty comprehensive email list for the village. We work together to make sure we keep as many of you updated with news as possible and over time this has proved to be really useful:

- ☐ we have reunited owners with cats, dogs and even model airplanes
- ☐ we have been able to inform you of events and activities – not to be missed!
- ☐ we have circulated requests for help
- ☐ we have been able to update you of important issues that impact on our community such as crime or flooding

It's well worth being on the list and if you are not, and would like to be so, just drop a line to rollestonjunction@gmail.com. Even if someone in your house is on the list we are very happy to add on anyone else who lives there too.

If you think you are on the list but haven't been receiving anything from us, or have changed your email address recently, again just drop us a line so we can check your details

Please be assured that we do not share your email address and we promise not to bombard you with messages. Look forward to hearing from you.

To continue to be able to produce the magazine, we will continue to need funds, and if anyone feels that they would like to support us financially, please do get in touch with Nick Pearson who will be happy to chat to you. There are options for small adverts or advertorials, small donations or larger sponsorships. You can contact Nick on **01653 816382** or at pearson.nick9@gmail.com

Please email us at rollestonjunction@gmail.com if you have an article you would like us to include by **24th May 2017** for inclusion in the Summer publication.

If you prefer to put pen to paper, please drop it through the door of either The Mill House, or Cray Croft in Holly Court, or call Gill Rowles on 01636 812936 or Marg Finch on 01636 816279 and we can collect it.

For advertising and sponsorship, contact Nick Pearson on 01636 816382.

If there are any errors or omissions, please let us know.

The editors reserve the right to edit items at their discretion and to reject material if they believe it unsuitable for publication.