



Lenderman Business Park

August 2025 - Coming Soon!



Property Overview

Introducing the newest industrial hub at the intersection of Lenderman Road and Hwy 72 in Marshall County, MS, poised to offer prime industrial lots for businesses seeking a strategic location with modern infrastructure.

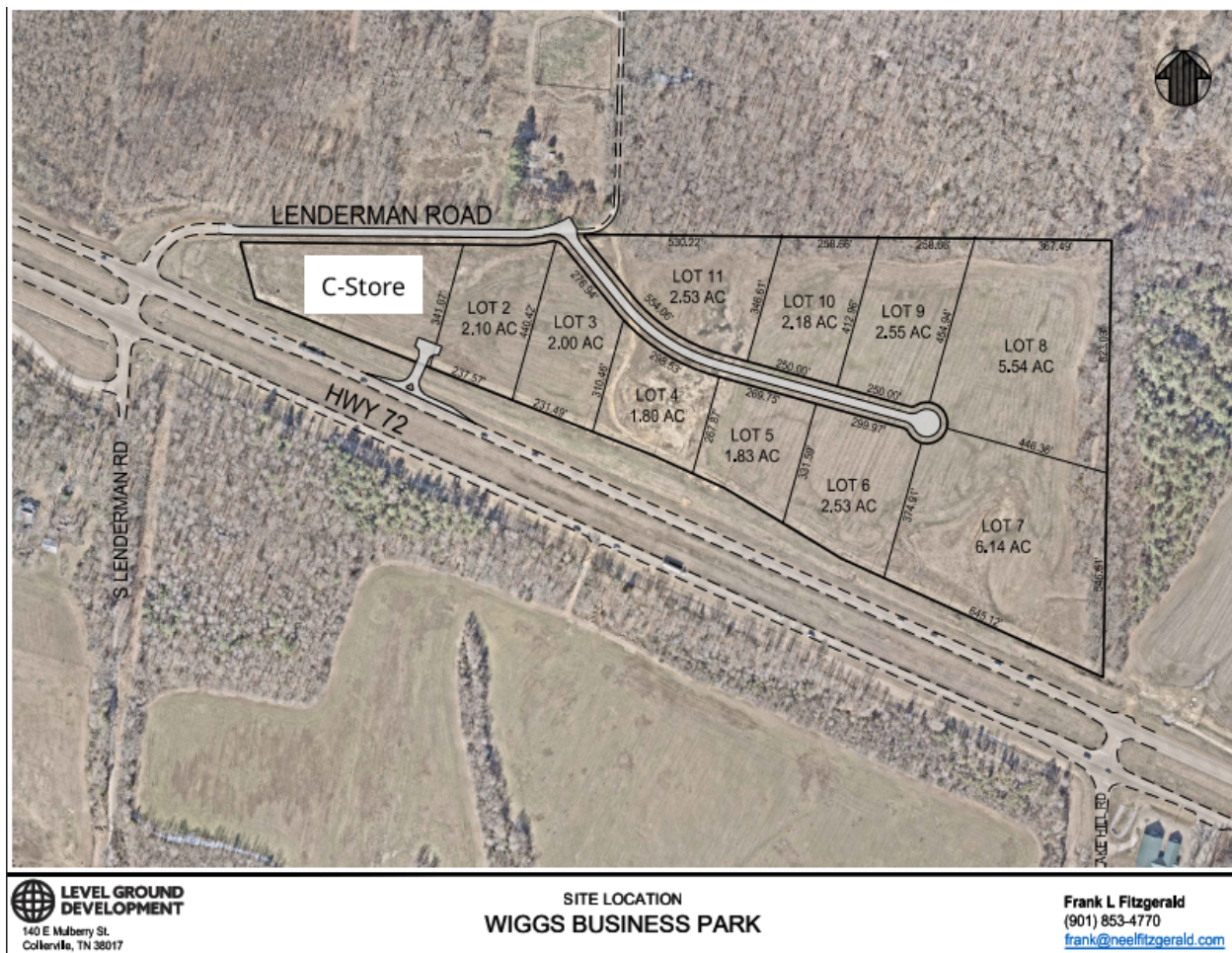
Residential Development in the Area



Area Overview

- Two D.R. Horton residential developments are currently under construction adding +/-900 new residential homes within 5 miles of the Lenderman site..
- The nearest chain grocery stores are located in Collierville just over 7 miles to the northwest of the site.
- The nearest national travel centers are located 16 miles southwest (Pilot) and 21 miles southeast (Love's) from the site.

Conceptual Site Plan (Lot Layout is Flexible)



Location Highlights

Adjacent to major economic arteries (Hwy 72, I-269 & I-20), the Lenderman Business Park boasts close proximity to Amazon, the Norfolk Southern rail head, and the planned site for the recently announced \$3 billion Cummins-Daimler-Paccar battery plant joint venture, positioning it as a nucleus for logistical efficiency and industrial innovation. Its strategic location promises seamless connectivity, and unparalleled access to key industry players, facilitating dynamic business synergies and growth opportunities for years to come.

Pricing Addendum

July 3, 2024

| <u>Lot</u> | <u>Acres</u> | | <u>Price</u> | |
|------------|--------------|------------|--------------|--------|
| 1 | 2.52 | Commercial | \$1,200,000 | *SOLD* |
| 2 | 2.58 | Commercial | \$1,000,000 | |
| 3 | 2.00 | Industrial | \$325,000 | |
| 4 | 1.80 | Industrial | \$290,000 | |
| 5 | 1.83 | Industrial | \$295,000 | |
| 6 | 2.53 | Industrial | \$370,000 | |
| 7 | 6.14 | Industrial | \$700,000 | |
| 8 | 5.54 | Industrial | \$630,000 | |
| 9 | 2.55 | Industrial | \$350,000 | |
| 10 | 2.18 | Industrial | \$300,000 | |
| 11 | 2.54 | Industrial | \$350,000 | |

Note: Pricing and Availability subject to change without notice. Final subdivision approval is pending.

Contact Information

Level Ground Development
140 E. Mulberry St.
Collierville, TN 38017
901.848.6746
frank@neelfitzgerald.com