

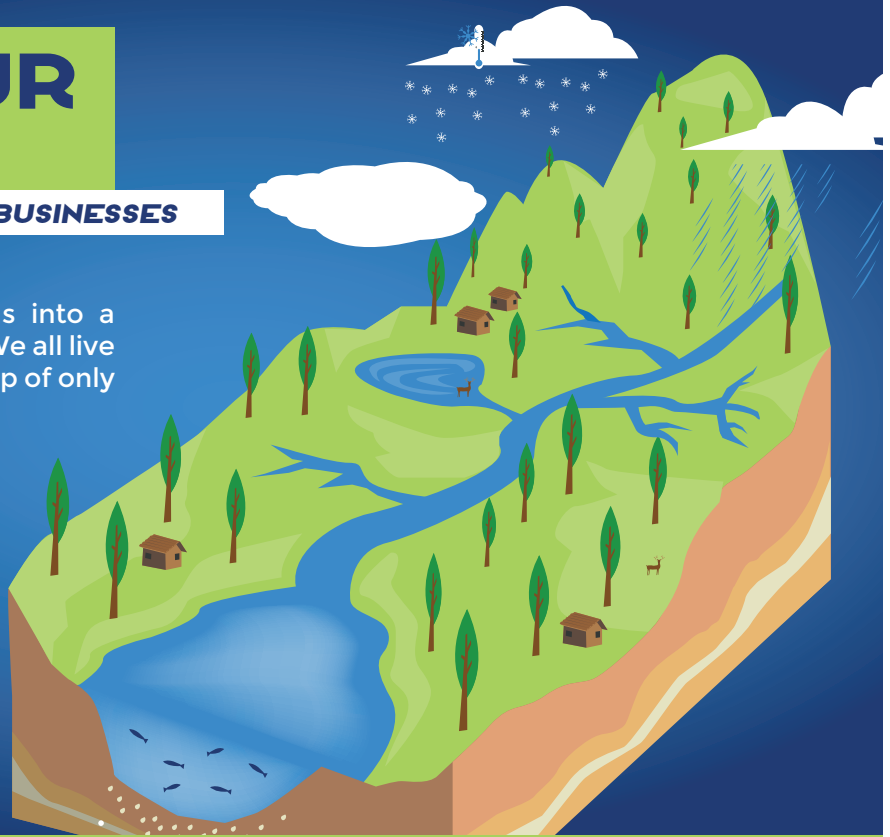
PROTECT OUR WATERSHEDS

BEST MANAGEMENT PRACTICES FOR BUSINESSES

WHAT IS A WATERSHED?

A watershed is an area of land that drains into a particular river, lake, or other body of water. We all live in a watershed. Some watersheds are made up of only one or two streams or creeks and are small. These are called subwatersheds. York County has 11 main watersheds which are part of the larger Chesapeake Bay Watershed.

We can all take a part in protecting our watershed by not only conserving our every day water use, but also by reconsidering our daily activities at home and at work. From using reusable bags to driving less, these small changes make a big impact on our watersheds.



BE WATER WISE EVERY DAY!

EVERY DAY, SIMPLE CHANGES THAT CAN BECOME PRACTICES:

EASY CHANGES

I N D O O R S



Conserve water by repairing leaks and turning off the water when not in use.



Use eco-friendly cleaning supplies. Some chemicals can disrupt the pH balance of the water.



Dispose of all unwanted toxic materials like cleaners, solvents and detergents through a hazardous waste hauler.



Respect your sewer system: don't pour toxic wastes, chemicals, or any medications down the toilet. In addition, get on a septic pumping schedule if you have an on-lot septic system.



Never put oil or grease down the drain. Contain grease and oil by using covered grease storage containers or installing a grease interceptor.

EASY CHANGES

O U T D O O R S



Do not hose down or pressure wash parking lots, roads, and sidewalks until after using dry cleanup methods like absorbing with kitty litter, sweeping, vacuuming, scraping off dried debris.



Keep dumpster lids closed and the areas around them clean. Never fill them with liquid or hose them out.



Minimize runoff by redirecting downspouts into vegetated areas.



Recycle yard waste in a compost pile.



Never pour chemicals or other wastes into storm drains.

DOING A LITTLE RESEARCH PRIOR TO USING WATER AND PLANNING YOUR PURCHASES CAN GO A LONG WAY!

PROACTIVE, NEW PRACTICES:

NEW PRACTICES INDOORS

- Purchase Eco-Friendly Cleaning Supplies.
- Purchase & install low-flow faucets and eco-friendly washing machines and dishwashers.
- Don't be wasteful- reduce, reuse, and recycle everyday!
- Just say no to single use plastic.
- Have spill containment and cleanup kits available.



NEW PRACTICES OUTDOORS

- Reduce runoff by using pervious pavers where possible.
- Plant native, hardy plants that require little or no watering, fertilizers or pesticides.
- Plant trees.
- Install rain gardens.
- Use a commercial car wash instead of washing your business vehicles on your property.



WAY

WATERSHED ALLIANCE OF YORK

 watershedallianceofyork.org

 [/WatershedAllianceOfYorkPa](https://www.facebook.com/WatershedAllianceOfYorkPa)

 [@wayorkpa](https://www.instagram.com/wayorkpa)

PROTECT OUR WATERSHEDS

BEST MANAGEMENT PRACTICES FOR BUSINESSES

WHAT IS A WATERSHED?

A watershed is an area of land that drains into a particular river, lake, or other body of water. We all live in a watershed. Some watersheds are made up of only one or two streams or creeks and are small. These are called subwatersheds. York County has 11 main watersheds which are part of the larger Chesapeake Bay Watershed.



BE WATER WISE EVERY DAY!

EVERY DAY, SIMPLE CHANGES THAT CAN BECOME PRACTICES:

EASY CHANGES

INDOORS & OUTDOORS



Conserve water by repairing leaks and turning off the water when not in use.



Use eco-friendly cleaning supplies. Some chemicals can disrupt the pH balance of the water.



Dispose of all unwanted toxic materials like cleaners, solvents and detergents through a hazardous waste hauler.



Respect your sewer system: don't pour toxic wastes, chemicals, or any medications down the toilet. In addition, get on a septic pumping schedule if you have an on-lot septic system.



Never put oil or grease down the drain. Contain grease and oil by using covered grease storage containers or installing a grease interceptor.



Do not hose down or pressure wash parking lots, roads, and sidewalks until after using dry cleanup methods like absorbing with kitty litter, sweeping, vacuuming, or scraping off dried debris.



Keep dumpster lids closed and the areas around them clean. Never fill them with liquid or hose them out.



Minimize runoff by redirecting downspouts into vegetated areas.



Recycle yard waste in a compost pile.



Never pour chemicals or other wastes into storm drains.

NEW PRACTICES

INDOORS & OUTDOORS

- Purchase Eco-Friendly Cleaning Supplies.
- Purchase & install low-flow faucets and eco-friendly washing machines and dishwashers.
- Don't be wasteful- reduce, reuse, and recycle everyday!
- Just say no to single use plastic.
- Have spill containment and cleanup kits available.
- Reduce runoff by using pervious pavers where possible.
- Plant native, hardy plants that require little or no watering, fertilizers or pesticides.
- Plant trees.
- Install rain gardens.
- Use a commercial car wash instead of washing your business vehicles on your property.

WAY

WATERSHED ALLIANCE OF YORK



watershedallianceofyork.org



[/WatershedAllianceOfYorkPa](https://www.facebook.com/WatershedAllianceOfYorkPa)



[@wayorkpa](https://www.instagram.com/wayorkpa)