

About Us

We are a dynamic and solutions-oriented Construction Management Services company providing fiduciary representation of project owners seeking to maintain an upper-hand in the management of their projects.

From inception to occupancy, we leverage our experience, technical knowledge, and resources to ensure the owner's best interests are front and center of the project team's performances and actions.



Contact Us

☎ 240-461-7167

✉ Malik@BawkuCrossroads.com

Services

Contact us to discuss how we could help your project with the following services:

- **Owner Representation:**
Construction & Development
- **Project Control Planning & Management**
- **Pre-construction Services**

Project Profiles

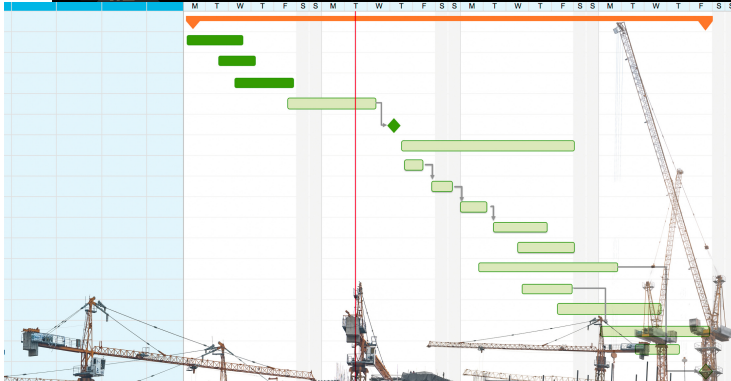
- **Tenant Fit-up Construction**
 - Office, Medical, Retail, etc.
- **Base Buildings**
 - Retail, Schools, Multifamily
- **Industrial Buildings**
 - Warehouse, Self-storage, etc.
- **Single Family Homes (Custom Built Owners)**
- **Institutional Buildings**
 - Places of Worship etc.
- **Special Projects**
 - Parks, Parking Lot, etc.
- **Major Renovations**

BAWKU CROSSROADS, LLC
OWNER'S REPRESENTATIVES
& CONSTRUCTION MANAGERS



Qualifications & Accreditations

- MS Real Estate Development
- BS Construction Management Tech.
- Decades of CM Experience
- Certified Construction Manager (CCM)
- Project Management Professional (PMP)
- LEED AP BD+C / LEED Online Manager
- Certified Trainer/Instructor - Construction Management Association of America (CMAA)



Core Competences

- Value Focused Practice
- Boutique Consulting
- Flexible and Innovative Problem Solving
- Collaborative Project Leadership

Contact us for:

- Project Acquisition Assistance
- Entitlement Assistance
- Pre-design & Design Phase Management
- Integrated Project Delivery (IPD) Management
- Value Engineering & Constructability Reviews
- Construction Monitoring and Controls
- Post-construction/Occupancy Assistance
- Etc

Contact Us

📞 240-461-7167

✉️ Malik@BawkuCrossroads.com

**BAWKU
CROSSROADS, LLC**



**OWNER'S REPRESENTATIVES
& CONSTRUCTION MANAGERS**