



# AIED Academy Inc

*Transforming Education Through Artificial Intelligence*

Phone: +1.8322978597  
Email: [Info@aiedacademyinc.org](mailto:Info@aiedacademyinc.org)  
Add: 5020 Sam Houston  
Avenue, Huntsville, TX  
77340, USA  
Web: [www.aiedacademyinc.org](http://www.aiedacademyinc.org)

## **DRAFT I**

We are looking for two scholars to head the project.

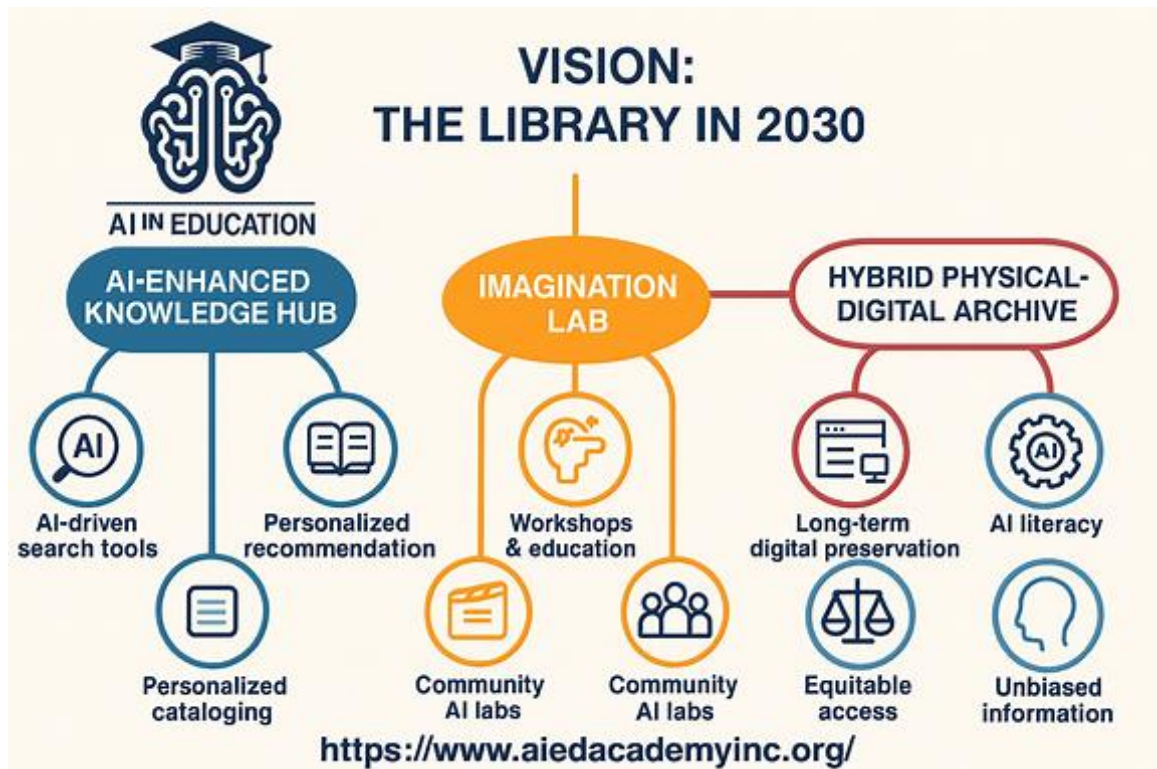
Project Duration 2025-02030

Pilot Project Start Line: 01.01.2026.

---

## **PROJECT TITLE: REINVENTING LIBRARIES IN AFRICA INTO HUBS FOR EDUCATIONAL DIGITAL TECHNOLOGY (EdDTech)**

**Objective:** Transforming library institutions (LI) in Africa into hubs for EdDTech research, skilling, upskilling, reskilling, digital citizenship education, networking, advocacy, partnerships, collaborations, and micro-credentialing in addition to serving as custodians of digital and no-digital data.



## **PROJECT SCOPE**

<b><u># Reinventing LI</u></b>	<b><u>Description</u></b>
1 Automated Cataloging	Streamlines metadata creation and classification.
2 Personalized Recommendations	Suggests resources based on user behavior.
3 Intelligent Search	Improves search via natural language and semantics.
4 Chatbots for Support	Offers 24/7 help with queries and navigation.
5 Predictive Analytics	Forecasts usage trends and resource demand.
6 AI-Powered Archiving	Digitizes and tags historical documents.
7 Sentiment Analysis	Analyzes feedback to improve services.
8 Virtual Reference	AI-assisted research help remotely.
9 Automated Transcription	Converts audio/video to searchable text.
10 Language Translation	Provides real-time translation of content.
11 Plagiarism Detection	Identifies unoriginal content in submissions.
12 Accessibility Tools	Enhances access for users with disabilities.
13 Collection Development	Guides acquisitions based on usage data.
14 Space Optimization	Uses data to manage layout and seating.
15 AI Literacy Training	Teaches patrons ethical, effective AI use.
16 Bias Detection	Flags biased or harmful materials.
17 Automated Indexing	Speeds up digital resource organization.
18 Event Planning Support	Helps schedule and promote programs.
19 Discovery Platforms	Unifies access across systems and repositories.
20 Ethical Stewardship	Promotes responsible AI use and data privacy.

## **2026 CURRICULUM OVERVIEW: SKILLING, UPSKILLING, AND RESKILLING**

**Objective:** Delivery of a curriculum designed to be modular, flexible, and scalable across different library systems and professional levels, including public, academic, or special libraries.

<u>Pathway</u>	<u>Module Title</u>	<u>Description</u>	<u>AI Role Alignment</u>	<u>ALA/IFLA Competency Alignment</u>	<u>Learning Outcomes</u>
<b>Skilling</b>	Foundations of AI	Introduces core AI concepts, types, and terminology	Intelligent Search, Automated Cataloging	Knowledge & Understanding	Define AI and its subfields; explain its relevance to libraries
	Generative AI Tools	Hands-on with ChatGPT, Copilot, DALL·E for library tasks	Chatbots, Virtual Reference, Transcription	Use & Application	Use AI tools for cataloging, reference, and outreach
	Ethical AI Use	Covers bias, privacy, copyright, and responsible AI adoption	Bias Detection, Ethical Stewardship	Ethical Considerations, Guiding Mindsets	Apply ethical frameworks to AI use in libraries
	AI Literacy for Patrons	Teaches librarians to guide users in AI use	AI Literacy Training	Guiding Mindsets, Analysis & Evaluation	Design and deliver AI literacy sessions for patrons
<b>Upskilling</b>	AI for Discovery & Research	Enhances search, recommendation, and semantic indexing	Enhanced Discovery, Personalized Recommendations	Analysis & Evaluation, Use & Application	Support researchers using AI-enhanced tools
	Data & Predictive Analytics	Builds data literacy and forecasting skills	Predictive Analytics, Collection Development	Knowledge & Understanding	Analyze usage trends to guide acquisitions and services
	Accessibility & Inclusion	Uses AI to improve access for diverse users	Accessibility Enhancement, Language Translation	Ethical Considerations	Deploy AI tools to support inclusive library services
	AI in Digital Humanities	Supports archival analysis and cultural heritage projects	AI-Powered Archiving, Sentiment Analysis	Use & Application	Facilitate AI-driven digital humanities initiatives
<b>Reskilling</b>	Cloud & Emerging Tech	Introduces cloud platforms, IoT, and smart libraries	Space Optimization, Makerspace AI	Knowledge & Understanding	Understand infrastructure for future-ready libraries
	Strategic AI Leadership	Prepares librarians to lead AI adoption and policy	Ethical Stewardship, Event Planning Support	Guiding Mindsets, Ethical Considerations	Develop AI-aligned strategies and lead transformation
	AI for Community Engagement	Uses AI to personalize services and outreach	Personalized Recommendations, Chatbots	Use & Application	Enhance patron engagement using AI tools
	Capstone Project	Real-world AI application in the library context	Any role	All competencies	Apply AI skills in a practical project; present and evaluate outcomes

# Curriculum Alignment with National and International Standards: American Library Association’s (ALA) and International Federation of Library Associations (IFLA)

## ALIGNMENT WITH ALA & IFLA STANDARDS 2025: COMPETENCIES FOR LP

<u>Competency Area</u>	<u>Curriculum Integration</u>	<u>LP AIEd Curriculum</u>
Guiding Mindsets	Promote ethical, inclusive, and critical engagement with AI	Ethics, Privacy & Bias module; AI Strategy & Leadership
Knowledge & Understanding	Teach foundational AI concepts and terminology	Foundations of AI; Generative AI Tools
Analysis & Evaluation	Enable librarians to assess AI systems and outputs	AI in Information Literacy; AI-Powered Research & Discovery
Use & Application	Train librarians to use AI tools effectively in workflows	Generative AI Tools; Makerspace AI; Cloud & Emerging Tech
Ethical Considerations	Address bias, privacy, and responsible AI use	Ethics, Privacy & Bias; IFLA-aligned scenarios

## IFLA– LIBRARIES AS ENTRY POINTS TO AIEd

<u>Focus Area</u>	<u>Curriculum Integration</u>	<u>Curriculum</u>
Ethical AI Use	Encourage responsible adoption and risk awareness	Ethics, Privacy & Bias; AI Strategy & Leadership
Library Values Alignment	Ensure AI supports equity, access, and intellectual freedom	AI for Community Engagement; Digital Humanities & AI
Collaborative Decision-Making	Foster peer learning and scenario-based reflection	Community of Practice; Capstone Projects
Practical Scenarios	Use real-world cases to spark critical thinking	AI Project Capstone; Makerspace AI

## References

- Association of College and Research Libraries. (2025). *AI competencies for academic library workers*. American Library Association. <https://www.ala.org/acrl/standards/ai>
- International Federation of Library Associations and Institutions. (2025, June 20). *Release of ‘IFLA Entry Point to Libraries and AI’ document*. <https://www.ifla.org/news/release-of-ifla-entry-point-to-libraries-and-ai-document/>
- OpenAI. (2025). *ChatGPT Response to User Prompt on Launch of AIEd Academy Inc Lecture Presentations* [Large language model]. <https://chat.openai.com/>