

Intro

Hello,

My name is Brady Mikesell. I live in Logan, Utah, and I have always been interested in astronomy, but more recently entered into the world of Astrophotography.

My setup is a bit of a budget setup, with my wallet being a limiting factor, but I have learned, and continue to learn, how to squeeze everything out of it I can.

So, lets talk about my setup...

Nikon D5300

PROS:

- Inexpensive Crop Sensor 1.5x
- Articulating Screen
- 24MP Sensor

CONS:

- Not as good at Low Light as a Full frame camera or Astrocam



Intervalometer

- This connects to my camera, and Controls my shutter.
- I can set:
 - Exposure length
 - Delay between Images
 - How many images I want to take



Lenses:

11-16mm Tokina



17-50mm Sigma



70-300mm Tamron



Tripod: Ravelli APGL4

- Now listed as a Amazon Basics Pistol Grip Camera Travel Tripod
- I removed the pistol Grip, and mounted a tracking mount
- Fairly inexpensive at \$85
- Pretty sturdy aluminum tripod, 8 lbs

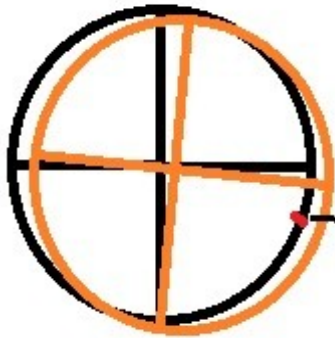


My setup



Balance your mount Especially East to West

**Polar Alignment Scope
Retical**



**True Polaris
rotation around
North**

Polaris

**Not properly balanced
Tripod Left to Right**



Weight it DOWN!



Rubber band Solution to Zoom Creep



Milkway & Star Trails



Neowise



Brady Mitchell



Andromeda



Pleiades



Pleiades Final



Orion & Running Man



Orion & Running Man (cropped)

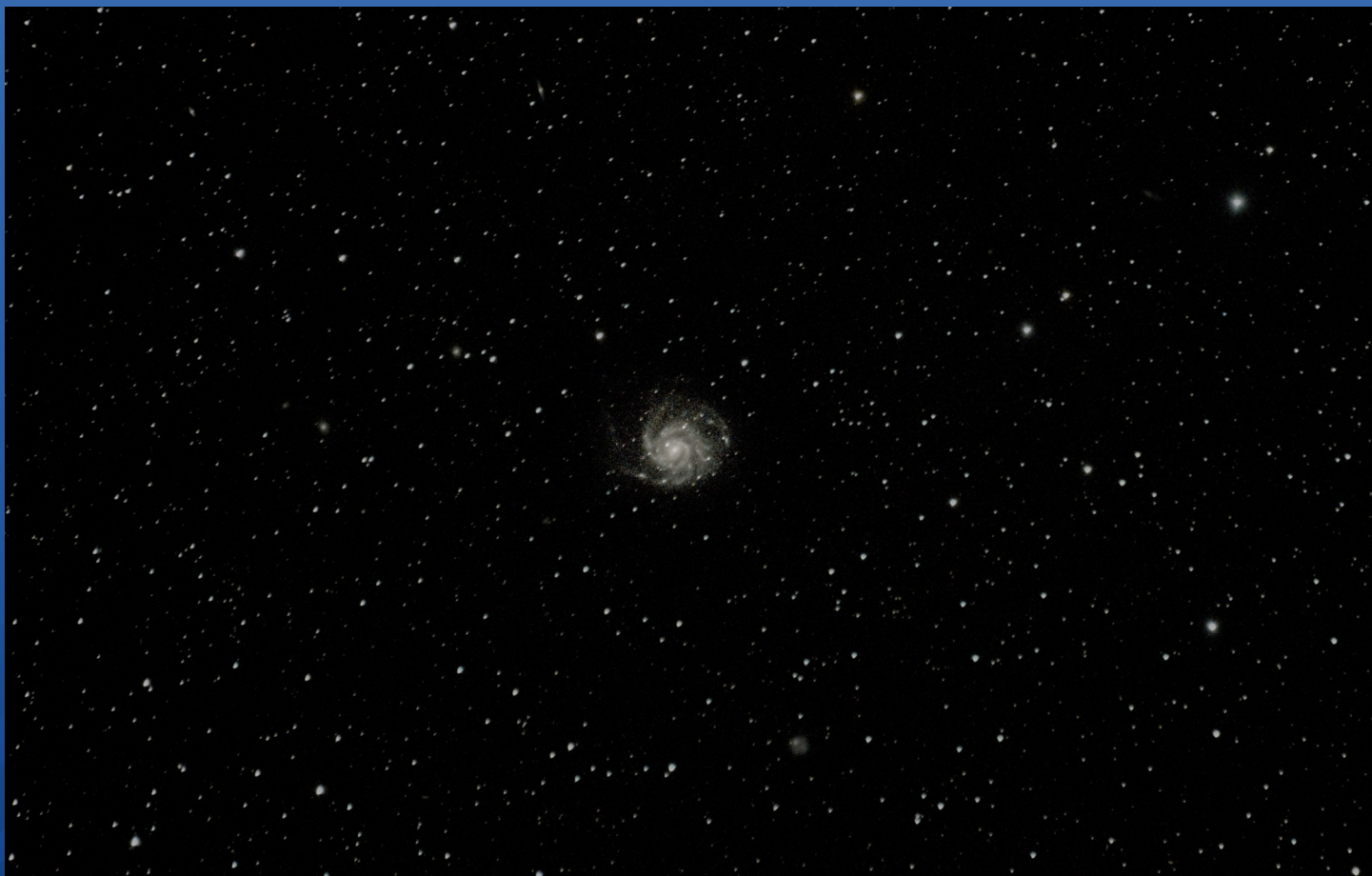


Brady Mikesell

Triangulum Galaxy (cropped)



Pinwheel Galaxy (cropped)



Whirlpool Galaxy (uncropped)



Whirlpool Galaxy (cropped)



Bodes & Cigar Galaxy (cropped)



Brady Mikesell