



X



FPS x Allan Continuous Fryer Systems -

The FPS x Allan continuous fryer range has been carefully engineered to bring efficiency to all domains without compromising in quality. All fryers are CE certified and built to Australian standards. The complete system includes the main fryer body, a heat exchanger with top mounted gas burner, twin rotary drum filter, overnight and fresh oil tanks with optional return filtration system. The fryers are capable of handling products such as nuts, crackers, peas, corn chips, noodles, and many more. With the WJF-501 and WJF-601 fryers boasting **1000kg/hr** for crackers and **800kg/hr** for peanuts. Our relationship with Allan our Taiwanese manufacturer has enabled us to bring this flawless continuous frying system to customers across Australia.

For more information or further enquiries please contact us via the details listed below or visit our website to see the full range of products and services we offer.

- ✓ Better oil temperature recovery rates
- ✓ Friendly design for easy operation and maintenance
- ✓ Superior oil quality
- ✓ Whole system made of 304 Stainless Steel
- ✓ Modulating gas train - allowing you to keep set temperature with or without product
- ✓ Submersible conveyor - raised with lockable screw jacks
- ✓ Australian standard electrical cables and components
- ✓ Cleaning in place
- ✓ Variable belt speed - to fine tune cooking times

● BRISBANE
○ GOLD COAST



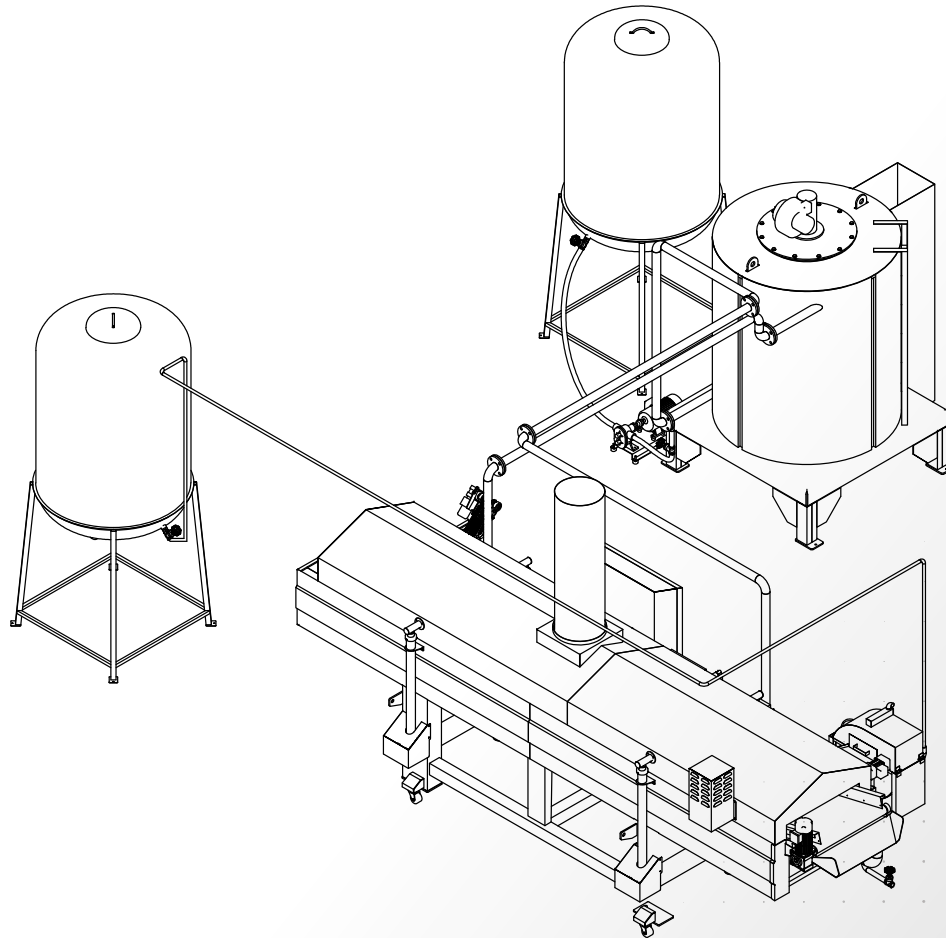
Specifications

	WJF-301	WJF-501	WJF-601
Fryer body length	3430	5150	6480
Fryer belt length	2370	4090	5420
Fryer belt width	620	620	620
Energy (Kcal/h)	120,000	180,000	280,000
Pump (W)	3750	5620	5620
Cooking oil capacity (L)	300	700	820



Specifications

Floor Plan -



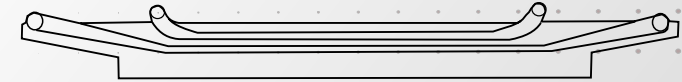
* Note this is only a guide, the position and pipework will be adjusted to suit plant space and preferences

Belt Types

in-feed

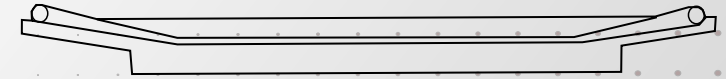
discharge

1



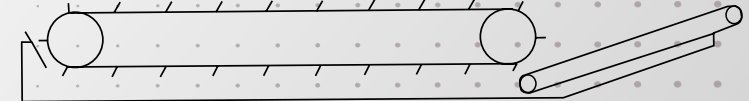
Semi-buoyant product. Conveyed in, submerged, conveyed out.

2



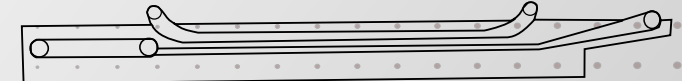
Sinking product. Conveyed in, conveyed out.

3



Non-clumping buoyant product. Dropped in-submerged, conveyed out.

4



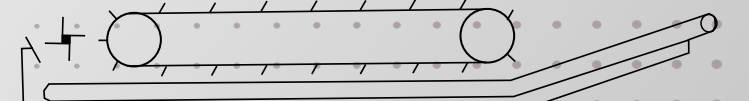
Tempura-coated product. Dropped on Teflon conveyor, submerged conveyed out.

5



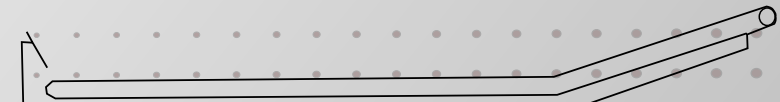
Buoyant product. Dropped in, submerged, conveyed out.

6



Sinking product or buoyant product. Dropped in, submerged, conveyed out.

7



Sinking product, dropped in, conveyed out.

