



VERTEX GENERATOR

2015



ORIGINAL
PARTS

VERTEX GENERATORS

NOZZLE



Part No.	Stamping No.	Specification	Application
2A937V7600	CDLLA150P760	2 x Ø 5.5	1100 GENSET 60KW
2A937V6340	DLLA140SN634	2 x Ø 6	4B GENSET
2A937V5810	DLLA142SN581	2 x Ø 6.5	6BT GENSET 60KW
2A937V7540	DLLA145P754	2 x Ø 7	JOHN DEERE GENSET
2A937V8410	DLLA148SN841	2 x Ø 7	4BT 5.9 GENSET 48KW
2A937V6790	DLLA149SN679	2 x Ø 7.5	4BTQ,S GENSET
2A937V6602	DLL150S6602	2 x Ø 7.5	6BTA ISB GENSET 90KW TURBO
2A937V5900	DLLA150P59	2 x Ø 8	1100.3AT GENSET 25 KW
2A937V7700	DLLA150P77	2 x Ø 8.5	1004.4T GENSET 34KW Turbo
2A937V9000	DLLA150P9	2 x Ø 8.5	CAT GENSET
2A937V7220	DLLA150SN722	2 x Ø 9	4BTA 3.9 GENSET
2A937V8590	DLLA150SN859	2 x Ø 9	4BTA 5.9 GENSET 48KW
2A937V0860	DLLA151PN086	2 x Ø 9.5	1100.3A GENSET 20 KW
2A937V4000	DLLA152SSM400	2 x Ø 7.5	
2A937V0070	DLLA154PN007	2 x Ø 7.5	1100.3 GENSET 20 KW
2A937V0870	DLLA154PN087	2 x Ø 9	4BT 3.9 GENSET
2A937V4130	DLLA154S324N	2 x Ø 9	1006.4 GENSET 48 KW
2A937V2020	DLLA155P202	2 x Ø 7.5	1100.3 GENSET 20 KW
2A937V2740	DLLA155P274	2 x Ø 8.5	
2A937V0660	DLLA155SM066	2 x Ø 8.5	1100.3T GENSET 25KW
2A937V8240	DLLA155SN824	2 x Ø 9	JOHN DEERE GENSET
2A937V2960	DLLA155SND296	2 x Ø 9.5	6BTA 5.9 GENSET
2A937V1380	DLLA156SM138	2 x Ø 10	1103 GENSET 16KW Non Turbo
2A937V1390	DLLA156SM139A	2 x Ø 8	1004.4A GENSET 34KW Turbo
2A937V6980	DLLA160SN698	2 x Ø 10	4BT 3.9 GENSET
2A937V8210	DLLA158SN821	2 x Ø 9	4BTA 5.9 GENSET 36 KW
2A937V1220	DN0PDN112	2 x Ø 9.5	1006.4 T GENSET 50 KW
2A937V1330	DN4SPND133	2 x Ø 7.5	1006.6 T GENSET 65KW
2A937V0140	DSL145P014	2 x Ø 8	1006.6T GENSET 95KW
2A937V0440	DSL150P044	2 x Ø 7.5	1006.6 GENSET 85KW

VERTEX GENERATORS

D.Valve Assy & Element



Description	Part No.	Specification	Application
ELEMENT	A138(G)	9.5R	1100 GENSET 60KW
ELEMENT	A44(G)	10R	4B GENSET
ELEMENT	1325-096	8.5L	6BT GENSET 60KW
ELEMENT	1325-895	8.5R	JOHN DEERE GENSET
ELEMENT	A214	9R	4BT 5.9 GENSET 48KW
ELEMENT	A74	8R	4BTQ.S GENSET
ELEMENT	82A	10.5R	6BTA ISB GENSET 90KW TURBO
D.Valve Assy	39A	1 X 7	1100.3AT GENSET 25 KW
D.Valve Assy	42A	1 X 7	1004.4T GENSET 34KW Turbo
D.Valve Assy	33A	1 X 7	CAT GENSET
D.Valve Assy	927023	1 X 6	4BTA 3.9 GENSET
D.Valve Assy	927024	1 X 6	4BTA 5.9 GENSET 48KW
D.Valve Assy	05A	1 X 6	1100.3A GENSET 20 KW
D.Valve Assy	VE51	1 X 6	1100.3 GENSET 20 KW
D.Valve Assy	A33	1 X 6	4BT 3.9 GENSET
D.Valve Assy	05A	1 X 6	1006.4 GENSET 48 KW
D.Valve Assy	50S5	1 X 7	1100.3 GENSET 20 KW
D.Valve Assy	927045	1 X 6	4BTA 3.9 GENSET
D.Valve Assy	927042	1 X 6	4BTA 5.9 GENSET 48KW
D.Valve Assy	39A	1 X 7	1100.3AT GENSET 25 KW

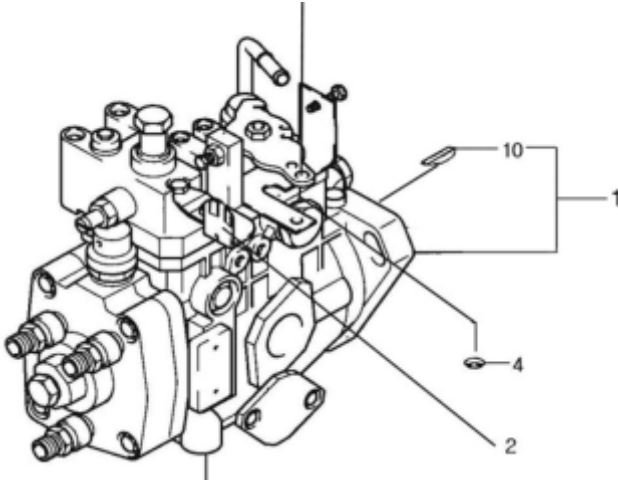
VERTEX GENERATORS

NOZZLE PENCIL



Part No.	Stamping No.	Specification	Application
2A937V7333	27333	8 x Ø 5.5	1004.4T GENSET 34KW Turbo
2A937V2262	32262	8 x Ø 6	6BT GENSET 60KW
2A937V2282	32282	8 x Ø 6.5	1100 GENSET 60KW
2A937V5870	6110700587	8 x Ø 7	6BTA ISB GENSET 90KW TURBO
2A937V7015	4W7015	8 x Ø 7	1100.3 GENSET 20 KW
2A937V7016	4W7016	8 x Ø 7.5	1100.3A GENSET 20 KW
2A937V7017	4W7017	8 x Ø 7.5	
2A937V7018	4W7018	8 x Ø 8	1100.3T GENSET 25KW
2A937V7019	4W7019	8 x Ø 8.5	4B GENSET
2A937V7020	4W7020	8 x Ø 8.5	4BT 3.9 GENSET
2A937V7828	6N7828	8 x Ø 9	4BT 5.9 GENSET 48KW
2A937V0449	7N0449	8 x Ø 9	1100.3AT GENSET 25 KW
2A937V1220	7N1220	8 x Ø 9.5	4BTA 5.9 GENSET 48KW
2A937V7032	7W7032	8 x Ø 7.5	4BTQ.S GENSET
2A937V7038	7W7038	8 x Ø 7.5	
2A937V1831	8N1831	8 x Ø 9	6BTA 5.9 GENSET
2A937V4694	8N4694	8 x Ø 9	1006.4 GENSET 48 KW
2A937V4697	8N4697	8 x Ø 7.5	CAT GENSET
2A937V7005	8N7005	8 x Ø 8.5	JOHN DEERE GENSET
2A937V8796	8N8796	8 x Ø 8.5	JOHN DEERE GENSET
2A937V6884	9L6884	8 x Ø 9	1100.3 GENSET 20 KW
2A937V6969	9L6969	8 x Ø 9.5	4BTA 3.9 GENSET

VERTEX GENERATORS

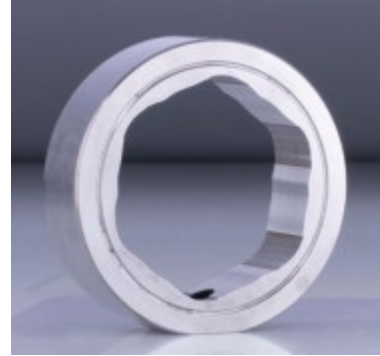


HEAD & ROTOR

Part No.	Specification	Type	Holes	Pump No.	Application
215L	4/7R	DP200	4	099.30.67	
7123-909T	6/9L	DPA	2	099.26.49	6BT GENSET 60KW
7139-130T	4/9L	DPA	2	099.34.65	4BT 3.9 GENSET
7139-235G	3/8R	DPA	2	341.11.00	1103 GENSET 16KW Non Turbo
7139-360U	6/9R	DPA	2	099.25.10	1100 GENSET 60KW
7139-709W	3/9.5R	DPA	2	099.37.51	1100.3 GENSET 20 KW
7139-764S	3/8.5R	DPA	2	099.27.82	1100.3A GENSET 20 KW
7139-764T	3/9L	DPA	2	099.27.54	1100.3AT GENSET 25 KW
7139-92Y	6/10R	DPA	2	876.11.00	1006.6 GENSET 85KW
7180-550R	4/8.5L	DPA	2	903.11.00	1004.4 GENSET 30KW
7180-550S	4/8.5R	DPA	2	099.27.56	1004.4T GENSET 34KW Turbo
7180-550U	4/9R	DPA	2	342.11.00	1004.4A GENSET 34KW Turbo
7180-572Y	6/10R	DPA	2	855.11.00	1006.6T GENSET 95KW
7180-600L	4/7R	DPA	4	360.11.00	4BT 3.9 GENSET
7180-647U	4/9R	DPA	2	099.27.01	4BT 5.9 GENSET 48KW
7180-698U	4/9R	DPA	2	363.11.00	4BTA 5.9 GENSET 36 KW
7180-722U	4/9R	DPA	2	099.25.12	4B GENSET
7180-727L	6/7R	DPA	4	340.11.00	6BTA 5.9 GENSET
7180-819U	4/9R	DPA	2	099.27.33	4BTQ.S GENSET
7180-854U	4/7R	DPA	4	099.33.84	4BT GENSET 36 KW TURBO
7180-973L	3/7R	DPA	4	896.11.00	1100.3 GENSET 20 KW
7180-977S	3/8.5R	DPA	2	099.37.54	1100.3T GENSET 25KW
7183-113L	4/7R	DPS	4	099.27.74	4BTA 5.9 GENSET 48KW
7183-121K	3/7L	DPS	4	099.37.50	
7183-125L	4/7R	DPS	4	099.26.51	
7183-128K	4/7L	DPS	4	099.27.72	
7183-129K	4/7L	DPS	4	099.27.73	4BTA 3.9 GENSET
7183-156L	6/7R	DPS	4	099.27.37	6BTA ISB GENSET 90KW TURBO
7183-165L	4/7R	DPS	4	888.11.00	4BTA QSB GENSET 60KW TURBO
7185-626L	3/7R	DP200	4	335.11.00	
9050-191L	4/7R	DPA	4	899.11.00	
9050-222L	6/7R	DP200	4	408.11.00	1006.6 T GENSET 65KW
9050-228L	4/7R	DP200	4	405.11.00	1006.4 T GENSET 50 KW
9050-300L	4/7R	DP200	4	099.37.53	1006.4 GENSET 48 KW

VERTEX GENERATORS

Cam Ring & Shoe Roller



ITEM	Stamping No.	Application
CAM RING	308E	1100.3T GENSET 25KW
CAM RING	308N	CAT GENSET
CAM RING	308T	JOHN DEERE GENSET
CAM RING	309C	1100.3AT GENSET 25 KW
CAM RING	309D	
CAM RING	309E	1100.3 GENSET 20 KW
CAM RING	309Q	4BT 5.9 GENSET 48KW
CAM RING	309X	1100.3 GENSET 20 KW
CAM RING	327E	4BT 3.9 GENSET
CAM RING	687A	
CAM RING	763E	1100.3A GENSET 20 KW
CAM RING	783E	4B GENSET
CAM RING	869A	JOHN DEERE GENSET
CAM RING	940D	6BTA 5.9 GENSET
CAM RING	940E	1004.4T GENSET 34KW Turbo
CAM RING	940M	4BTQ.S GENSET
CAM RING	940N	1006.4 GENSET 48 KW
CAM RING	949E	4BT 3.9 GENSET
CAM RING	949M	1100 GENSET 60KW
CAM RING	949Q	6BT GENSET 60KW
CAM RING	970B	4BTA 3.9 GENSET
CAM RING	971A	4BTA 5.9 GENSET 48KW
CAM RING	975E	1004.4A GENSET 34KW Turbo
CAM RING	976D	6BTA ISB GENSET 90KW TURBO
CAM RING	A309R	1103 GENSET 16KW Non Turbo
SHOE ROLLER	35-72	4BTA 5.9 GENSET 36 KW
SHOE ROLLER	35-72L	1006.6 T GENSET 65KW
SHOE ROLLER	35-72N	1006.4 T GENSET 50 KW
SHOE ROLLER	86-0100	1006.6T GENSET 95KW

VERTEX GENERATORS

Feed Pump & Hand Primer



ITEM	Part No. & Application	ITEM	Part No. & Application
FEED PUMP	DH 330-5 (9 MM) Ref. GENERATOR MODEL:105210-1941.	FEED PUMP	ND Type (13 MM) Ref. GENERATOR MODEL:092100-0372
FEED PUMP	6D34T (13 MM) Ref. GENERATOR MODEL:105210-5250, ME730303	FEED PUMP	ND Type (8.5 MM) Ref. GENERATOR MODEL:092100-1200
FEED PUMP	6SD1, EX300-2/3 Ref. GENERATOR MODEL:105207-1480 :1-15750-121-0	FEED PUMP	ND Type (13 MM) LONG
FEED PUMP	DH1 Ref. GENERATOR MODEL:6512101-7013D	FEED PUMP	ND Type (8.5 MM) SHORT
FEED PUMP	(9 MM) Ref. GENERATOR MODEL:651210A7012	FEED PUMP	2J&2H, 4HE1 (13MM) Ref GENERATOR MODEL:105210-4639
FEED PUMP	GENERATOR MODEL:105207-1540	FEED PUMP	10PE1 (13 MM) Ref GENERATOR MODEL:105237-5280
FEED PUMP	6D102 (13 MM) Ref. 105220-6220	FEED PUMP	Ref. GENERATOR MODEL:105237-4421 Ref, NO:1157501300
FEED PUMP	(9 MM) Ref. GENERATOR MODEL:105220-5690,	FEED PUMP	ME738730 Ref GENERATOR MODEL:105217-6080 Ref. NO:105217-6080
FEED PUMP	6BG1, SH200 Ref. GENERATOR MODEL:105220-7230, 105220-7010	FEED PUMP	Type Ref. GENERATOR MODEL:106.166.000
FEED PUMP	6BD1, EX200-2 Ref. GENERATOR MODEL:105220-7440 NO:1-1575-0201-0	FEED PUMP	Type DH220-5
FEED PUMP	CAT 320B/C,S6K Ref. GENERATOR MODEL:105220-7180, 105220-7060	FEED PUMP	Ref. GENERATOR MODEL:3936318,AST7620,3933254
FEED PUMP	GENERATOR MODEL:105217-6380	FEED PUMP	GENERATOR MODEL:3936316,AST7616,3933252
FEED PUMP	6D16, 6D14,8DC6 (9 MM) Ref. GENERATOR MODEL:105210-1351,105210-4151	FEED PUMP	NO:3917998, 93151377 AST76001 3918076
FEED PUMP	GENERATOR MODEL:105217-4000,,: EK100 RD6/RD8 8DC9	FEED PUMP	Ref. GENERATOR MODEL:F002A50023
FEED PUMP	V10, 10PA1 DK10 (13 MM)	FEED PUMP	IN:1/4*18H(NPTF) OUT:M14*1.5 REF NO:2660/1
FEED PUMP	8DC91, 8DC82 FV415 (13 MM)	HAND PRIMER	2 447 222 020
FEED PUMP	EF750, RE8 (13 MM) Ref. GENERATOR MODEL:105237-4000, 105237-4180	HAND PRIMER	092130-0220
FEED PUMP	GENERATOR MODEL:105237-1341, 105237-1100	HAND PRIMER	152200-5420
FEED PUMP	C240,4BC2,6BB1 (13 MM) Ref. GENERATOR MODEL:105220-1570,105220-5251	HAND PRIMER	152200-5620
FEED PUMP	4D30,SD22,6D31 (13 MM) Ref. GENERATOR MODEL:105220-1720,105220-1800	HAND PRIMER	2 447 222 125

VERTEX GENERATORS

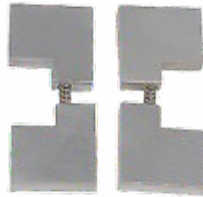
S.61468

Cross 0020
25x5.5 mm



S.70582

Steel Vanes
4Pcs+2Sp



S.70583

Weight
SM125



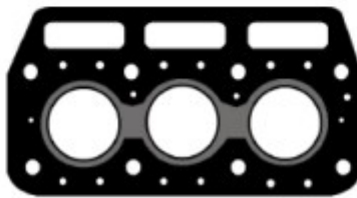
S.70609

Cylinder Head Gasket
Replaces: M802217
Fits: 650 (2T80UJ Engine)



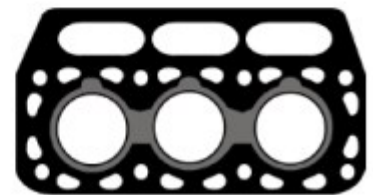
S.70607

Cylinder Head Gasket
Replaces: M802218
Fits: 750 (3T80UJ Engine)



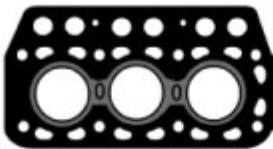
S.70623

Cylinder Head Gasket
Replaces: CH10115, M810714
Fits: 850, 900HC



S.70610

Cylinder Head Gasket
Replaces: M808712, CH11785
Fits: 950 (3T90J Engine->090299)



S.70528

Tester (Nozzle)
Replaces: CH14762



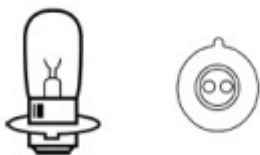
S.70763

Tester (Electric)
Replaces: CH10854, M803082



S.54977

Headlight Bulb
(12 V 25/25 W)
Replaces: CH11439
Fits: 850, 950, 1050, 1250, 1450, 1650



S.54994

Headlight Bulb
(12 V 35/35 W)
Replaces: CH15208
Fits: 650, 750



S.70567

Solenoid (12V, 24V)
(1 9/16" Dia - 18 Spline)
Replaces: CH15139
Fits: 750

