



## GREENHOUSES

Many homeowners around the country are catching on to the idea of growing their own fresh herbs and vegetables. **NOW WE CAN HELP!** Our new greenhouses are available and come in three standard sizes and are economically priced:

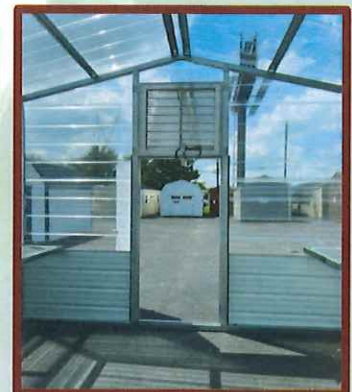
8'x10'	\$6,995
10'x15'	\$8,995
12'x20'	\$10,995

All greenhouses come equipped with the following components:

- Nine-foot side height
- Vertical Roof
- Standard Horizontal Sides
- One walk-in door
- Standard carport framing
- MR 9 Clear Panels on the roof, sides, and ends
- Aluminum shutter with cord
- Air exhaust fan with cord
- Variable fan speed control with cord
- Thermostat with cord
- Metal wainscot and metal trim (Customer may select one color of his/her choice.)
- Shelving

### WARRANTY

As with any MaxSteel Buildings structure, the buyer will receive a 90-day limited warranty on workmanship and materials. Any repair issues must be reported to MaxSteel's corporate office within 90 days of the installation date. A customer should not report repair issues to the dealer. Repair issues reported only to the dealer will not be considered reported in a timely manner under this Agreement.





## PRODUCT WARRANTIES ON GREENHOUSES

**LIMITED WARRANTY.** Buyer will receive a 90-day limited warranty on workmanship and materials. Any repair issues must be reported to MaxSteel's corporate office within 90 days of installation date. Do not report repair issues to your dealer. Repair issues reported only to your dealer will not be considered reported in a timely manner under this Agreement. Regardless of whether any repair is necessary after installation, Buyer shall pay all remaining balances due upon installation. Withholding payment will not ensure repairs are made and could delay repairs if the account is overdue. Buyer shall work with MaxSteel to help ensure repairs are done in a timely manner. If Buyer fails or refuses to comply with scheduling the repair in a timely manner, MaxSteel reserves the right to void all warranties and Buyer agrees to waive any and all claims for any and all repairs. Scratches to metal panels will be repaired using color appropriate paint pens or otherwise at the discretion of MaxSteel. There is a 20-year warranty limited to rust-through of metal panels and steel tubing (assuming normal user care and maintenance). If Buyer upgrades to Premium 40-Year Metal, there is a 40-year warranty limited to rust-through of metal panels and steel tubing (assuming normal user care and maintenance). Alteration to the unit in any manner by the Buyer will immediately void all warranties, including without limitation interior or exterior modifications, installation of electrical, and/or installation of plumbing. EXCEPT AS EXPRESSLY SET FORTH IN THIS AGREEMENT, THE GOODS AND SERVICES TO BE PURCHASED UNDER THIS AGREEMENT ARE FURNISHED AS IS WITH ALL FAULTS AND WITHOUT WARRANTY OF ANY KIND, EXPRESS OR IMPLIED, INCLUDING ANY WARRANTY OF MERCHANTABILITY OR FITNESS FOR ANY PARTICULAR PURPOSE.

### **CLEAR POLYCARBONATE PANELS**

The manufacturer, AmeriLux International, LLC, provides a ten (10) year warranty as specified for CoverLite, MR9 and MR12 Corrugated Polycarbonate for sheets purchased as of the date of delivery/shipment. Please refer to the manufacturer's website [www.AmeriLux.com](http://www.AmeriLux.com) for details.

#### **CoverLite® MR9" and MR12" Corrugated Polycarbonate Sheet Warranty**

Ten (10) Year Warranty as specified below for CoverLite® MR9" and MR12" Corrugated Polycarbonate Sheets purchased as of the date of delivery/shipment:

- 1) Yellowing of sheets' surface:** In accordance with standard test ASTM D1925, the yellowing index should remain at or below 3 within 3 years, and remain at or below 10 within 10 years.
- 2) Penetrability of Ultraviolet Ray in wave length 300nm should be less than 2.4%.**
- 3) Light Transmittance:** Based on standard test ASTM D1003, sheets should have 90% of the original percentage of light transmittance at the end of the ten (10) year warranty period.
- 4) Sheets shall not break as a result of hailstones measuring up to 25mm in diameter and attaining up to 20 meter/seconds in velocity.** Should the polycarbonate sheets not reach the warranty scope specified above (providing that storing, installation, handling and cleaning of the sheets was compiled per guidelines), you must present this warranty and invoice as well as samples of the defective products for replacement of new sheets.

#### **Notes:**

- 1) The warranty specified above does not apply to scratches, abrasion and/or any damage caused by contact with incompatible materials or breakage due to natural disasters.**
- 2) The warranty specified above does not apply to applications in an environment that may damage the principle raw materials of the sheets – polycarbonate resins – as well as contacts within compatible adhesives, such as cements.**
- 3) The warranty specified above does not apply to losses or expenditure resulting from improper installation and/or cleaning.**
- 4) The warranty specified above applies to CoverLite® Corrugated Polycarbonate Sheets as the only new sheets for replacement.** Costs associated with removal and/or installation is not included in the warranty as well as packaging, shipping, taxes, or any other direct or indirect losses.
- 5) Breakage caused by objects other than hail is excluded from this warranty.** Impact failures or breakage caused by other means, intentional or unintentional, is not covered.

### **EXHAUST FAN \* THERMOSTAT \* ALUMINUM SHUTTER \* VARIABLE FAN SPEED CONTROL**

The Exhaust Fan has a two (2) year manufacturer's warranty. The thermostat, aluminum shutter and Variable Fan Speed Control have a one (1) year warranty. Please refer to the manufacturer's website [www.jdmfg.com](http://www.jdmfg.com) for details.

#### **J&D Manufacturing Product Warranty Policy:**

J&D provides a one-year warranty to the original purchaser on all products that are inspected and proven by J&D Manufacturing to be defective in materials and workmanship. **The warranty applies to all products unless otherwise noted on the product literature page.** Products or individual components may be repaired or replaced at the discretion of J&D Manufacturing.

The warranty period is valid from the date of invoice from J&D Manufacturing, and applies only to products used for the intended purpose under normal use, and does not cover regular wear and tear, acts of nature, return freight or delivery, loss or damage to personal property, cost of removal or installation, incidental or consequential damages or labor, misuse, abuse, alterations or negligence, improper installation or installation that does not adhere to installation instructions, improper operation, lack of maintenance to the product, cosmetic rust, corrosion, staining, or products without proper identification.