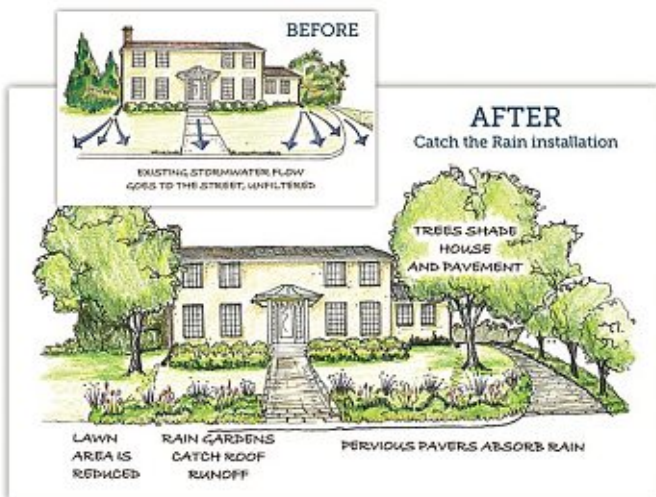


# Celebrate Earth Day, April 22, 2024

## You Can Help Reduce Flooding and Improve Water Quality



Graphic created by Beth Burnam, provided by Brandywine Conservancy

### Learn how at [www.cwmp.org](http://www.cwmp.org):

- **Plant a tree or shrub** to help absorb stormwater and provide shade
- **Reduce lawn areas** and replace with native plants
- **Catch rainwater from downspouts** by installing a rain barrel or rain garden
- **Reduce impervious surfaces** or replace with pervious pavers
- **Volunteer** at litter clean-up or tree planting event
- **Learn more** at a workshop or virtual program at <https://cwmp.org/cwmp-calendar/>

### Sponsored and Paid for by:

Did you know that in Pennsylvania, every municipality with an urbanized area and impaired stream must develop and implement a municipal stormwater management plan? Learn more by visiting your municipality's web site.

### The following municipalities participated in the 2023/24 CWMP Cost Share

- Avondale Borough
- Birmingham Township
- City of Coatesville
- Downingtown Borough
- East Bradford Township
- East Brandywine Township
- East Caln Township
- East Fallowfield Township
- East Marlborough Township
- East Whiteland Township
- Franklin Township
- Honey Brook Borough
- Honey Brook Township
- Kennett Square Borough
- Kennett Township
- London Britain Township
- London Grove Township
- Londonderry Township
- Modena Borough
- New Garden Township
- New London Township
- Parkesburg Borough
- Penn Township
- Pocopson Township
- Sadsbury Township
- South Coatesville Borough
- Thornbury Township
- Upper Uwchlan Township
- Uwchlan Township
- Valley Township
- Wallace Township
- West Bradford Township
- West Brandywine Township
- West Chester Borough
- West Goshen Township
- West Grove Borough
- West Pikeland Township
- West Whiteland Township
- Westtown Township



[www.cwmp.org](http://www.cwmp.org)

CWMP is a partnership of municipalities, county agencies, and watershed conservation organizations to restore and protect the water quality of streams in the Brandywine Creek, Red Clay Creek and White Clay Creek watersheds. For a list of all partners visit: [www.cwmp.org/about/](http://www.cwmp.org/about/)