



**DWELT**  
housing model



*Built by*



**Lasting change** grows  
from a foundation  
of **support**



# Health and help are multi-faceted



What makes a pregnancy a crisis instead of a joyous celebration?

Through our years of experience equipping pregnancy centers, which serve women experiencing crisis pregnancies daily, we've seen several common themes.

## pregnancy becomes a crisis when mom is:



Juggling a variety of challenges and urgent needs



Needing a stable, safe, and affordable place to live



Lacking the support of healthy relationships  
and connection to a church community

For each of us, crisis diminishes our ability to critically solve complex issues. The mom in crisis is so overwhelmed that procuring basic needs feels impossible. That fight to secure housing, transportation, child care, and food leaves little emotional or economic margin to deal with other issues. Many times, she has to battle shame and isolation. Even when resources exist in the community to address these issues, navigating a variety of providers presents an enormous challenge for families in crisis. And this myriad of transactions often fails to help mom find the supportive community she needs to climb out of poverty. For the mom, these relationships are what she most needs for long-term transformation.

We are all made for community. Each of us overcomes crisis only when surrounded with healthy community that walks with us toward stability.

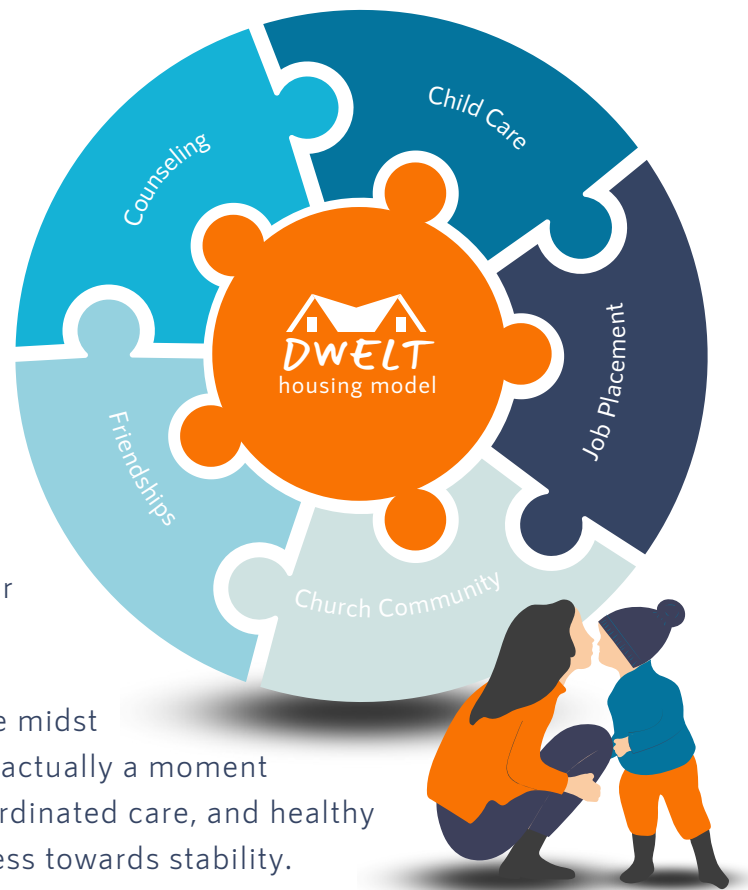
**Where can families in crisis find transformational support?**



# Safe housing is the foundation for **stability**

We believe that offering a pregnant woman access to safe and affordable housing is the key to helping her address all the pieces contributing to her struggle.

Although it can be overwhelming to be pregnant in the midst of so many challenges, we are convinced that crisis is actually a moment of opportunity. Opening the door to safe housing, coordinated care, and healthy relationships gives her the opportunity to make progress towards stability.



**"Our pregnancy center clients across the country have consistently told us their biggest gap in serving their clients is helping them find safe, stable housing they can afford."**

*Colin LeCroy, VP and Co-Founder of Life on Belay*

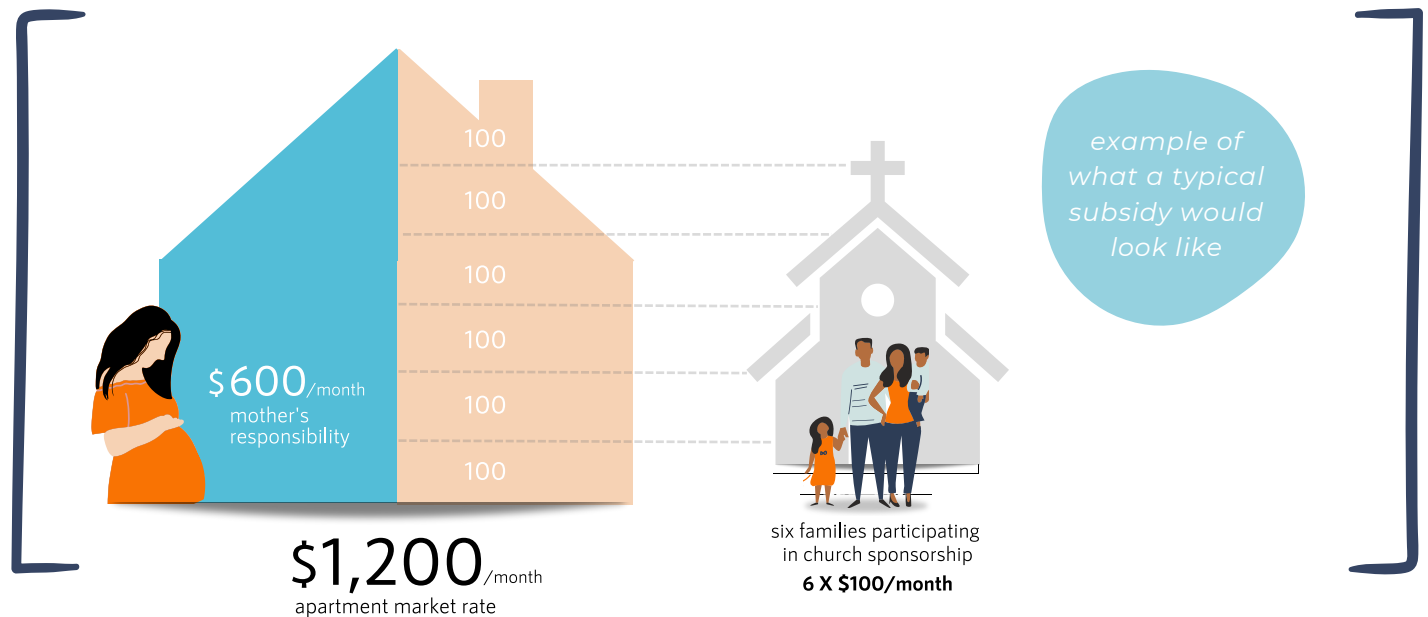
Many nonprofits already exist in our communities to address issues individually. But those nonprofits often work without coordination, even though they serve similar clients, making it more difficult for a family to address the big picture. The burden of paying rent every month leaves little margin to deal with the bigger long-term issues. And nonprofits find it difficult to offer ongoing support or foster the healthy relationships and church connections their clients need.

In our model, we use housing to build a healthy community around a mom that can offer transformative support. Providing mom a safe and secure place to live relieves a major burden and gives her the chance to address other issues. Then by coordinating support for her from nonprofits already poised to address individual issues and positioning a church community as a long-term landing place, we can build a pathway out of the cycle of poverty for at-risk pregnant women.



# Built to transform

Our model uses housing to connect mom to comprehensive care and a supportive community. It relies on a subsidy sustained by sponsorships from church families so mom can afford rent, and it undergirds care with personal relationships with those families.



Through our work with pregnancy centers across the country and our research with apartment developers and churches, we have outlined a straightforward, approachable way to get mom into affordable housing while systematically addressing those other needs.

We will house moms in apartment units managed by missionally aligned apartment owners. Moms will pay an affordable portion of the rent, while a nonprofit will provide a rent subsidy funded by sponsor families from local churches through recurring monthly donations. As a condition of her rental assistance, the mother will take part in a comprehensive ministry program aimed at helping her live independently.

A case manager will build a custom plan with mom by assessing her needs and working alongside her. This relationship will be a source of natural accountability and healing support. This work may include connection to resources like job training, child care, counseling, healthcare, and more. The program will also provide her additional relational support, as those sponsor families will befriend the woman they are sponsoring and invite her into their community.



# Let's do this



Life on Belay will test the Dwelt housing model with small scale pilots, beginning with an 8-family cohort in Dallas by the end of 2023. Life on Belay's goal is to help organizations build the capacity to serve thousands of women and children in Dallas and around the country over the next decade.

PHASE  
01



## Build the Program

- Analyze existing maternity housing programs and strategies to identify gaps and needs
- Design program components and care model
- Vet the model with key stakeholders, including prospective residents
- Establish key partnerships with apartment owners, churches, and service providers
- Develop implementation plan to include sustainable funding, staffing, buildings, training, and roadmap.

PHASE  
02



## Pilot the Project

- Design case plans with participants
- Coordinate participants' care with local nonprofits
- Organize church volunteers
- Hold participants accountable
- Measure participants' progress and outcomes.

PHASE  
03



## Refine + Scale

- Assess short- and long-term success outcomes for mothers, apartments, and church sponsors.
- Improve model based on experience
- Equip well-resourced pregnancy centers and churches to offer supportive housing for moms
- Maintain and analyze data on program outcomes to further refine model

**PHASE 1 FUNDING GOAL: \$210,000**

# How we succeed



## At-risk Mother



- ✓ Completed the program
- ✓ Achieved financial independence by the end of the program
- ✓ Became and stayed connected to a church community
- ✓ Would recommend the program to a friend

## Apartment Owner



- ✓ Felt they helped make a positive impact
- ✓ Decreased turnover and increased revenue
- ✓ Would consider continuing and/or recommend participation to other apartment owners

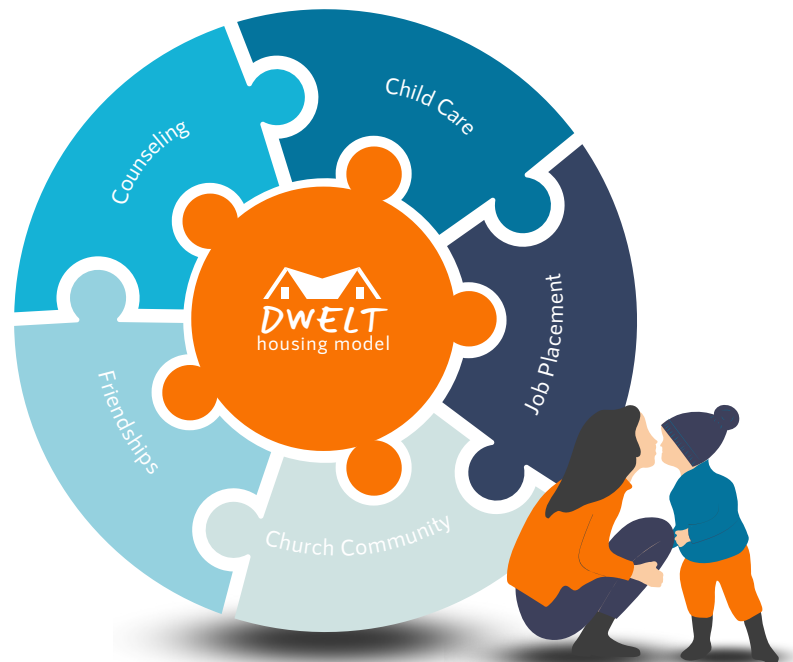
## Church Families



- ✓ Sponsor families enjoyed participating in the program
- ✓ Maintained financial sponsorship for the duration of their recipient's program
- ✓ Would consider sponsoring again and/or recommending to another family

"In moments of **crisis** there has to be more than **just a rescue.**"

Jeremy Aranda, President and Co-Founder of Life on Belay



# In summary



- ① For women living in poverty and experiencing unexpected pregnancies, the lack of safe, stable housing puts them at high-risk for poor outcomes.
- ② Life on Belay has extensive experience with pregnancy centers and has the knowledge, resources, and relationships to build a functional model to care for these women.
- ③ To ensure lasting change and not a transactional service, we are building a model based on a 12-24 month housing stay fortified by professional needs assessment and connection to critical local resources.
- ④ The model would be sustained by families within local churches who band together with monthly sponsorships and an invitation into their community, meeting her material, emotional and spiritual needs.

**Build a pathway  
out of crisis**

