



GRICOL

SINCE 1962



2023



GRICOL
SINCE 1962



BATHROOM

WWW.GRICOL.COM

ONE LEVER HANDLE SHOWER



Click aquí 

VIVALDI

- Ceramic disc cartridge assures durability and long-lasting performance
- Single handle provides flow and temperature control
- Premium metal construction
- 1/2" female one handle connection
- Chrome finish resist corrosion and tarnishing
- 2.51 GPM (9.5 lpm) maximum flow rate at 80 psi
- NTC 1644 compliance
- Working temperature: 41-160 °F (5 - 71.1°C)

CODE	DESCRIPTION	PRESENTATION	UND. PER PACK
01-2101-11SR	Vivaldi single handle ((valve only))	Box	12



Click aquí 

TIFFANY

- Ceramic disc cartridge assures durability and long-lasting performance
- Single handle provides flow and temperature control
- Premium metal construction
- 1/2" female one handle connection
- Chrome finish resist corrosion and tarnishing
- 2.51 GPM (9.5 lpm) maximum flow rate at 80 psi
- NTC 1644 compliance
- Working temperature: 41-160 °F (5 - 71.1°C)

CODE	DESCRIPTION	PRESENTATION	UND. PER PACK
01-2201-11SR	Tiffany single handle ((valve only))	Box	12



Click aquí 

SION

- Ceramic disc cartridge assures durability and long-lasting performance
- Single handle provides flow and temperature control
- Premium metal construction
- 1/2" female one handle connection
- Chrome finish resist corrosion and tarnishing
- 2.38 GPM (9 lpm) maximum flow rate at 80 psi
- NTC 1644 compliance
- Working temperature: 41-160 °F (5 - 71.1°C)
- The 01-2601-211 package Includes BL-8630-11 Iseo circled shower head

CODE	DESCRIPTION	PRESENTATION	UND. PER PACK
01-2601-11SR	Sion single handle ((valve only))	Box	12
01-2601-211	Sion single handle (Valve + shower head)	Box	12



Click aquí 

VOGA

- Ceramic disc cartridge assures durability and long-lasting performance
- Single handle provides flow and temperature control
- Premium metal construction
- 1/2" female one handle connection
- Chrome finish resist corrosion and tarnishing
- 2.38 GPM (9 lpm) maximum flow rate at 80 psi
- NTC 1644 compliance
- Working temperature: 41-160 °F (5 - 71.1°C)

CODE	DESCRIPTION	PRESENTATION	UND. PER PACK
01-3701-11SR	Voga single handle (valve only)	Box	12

8" TWO HANDLE SHOWER

PORTOBELLO



- Ceramic disc assures durability and long-lasting performance
- Easy 1/4 turn handle rotation
- Premium metal construction
- 1/2" female connection
- Chrome finish resist corrosion and tarnishing
- 2.51 GPM (9.5 lpm) maximum flow rate at 80 psi
- NTC 1644 compliance
- Working temperature: 41-160 °F (5 - 71.1 °C)

Click aquí

CODE	DESCRIPTION	PRESENTATION	UND. PER PACK
01-0220-11SR	Portobello two handle mixer (valve only)	Box	12

CALIMA



- Ceramic disc assures durability and long-lasting performance
- Easy 1/4 turn handle rotation
- Premium metal construction
- Chrome finish resist corrosion and tarnishing
- 1/2" female connection
- 2.11 GPM (8 lpm) maximum flow rate at 80 psi
- NTC 1644 compliance
- Working temperature: 41-160 °F (5 - 71.1 °C)

Click aquí

CODE	DESCRIPTION	PRESENTATION	UND. PER PACK
01-0820-11SR	8" (20 cm) Calima two handle mixer (valve only)	Box	12
01-0846-11SR	8" (20 cm) Calima three handle mixer (valve with diverter)	Box	12

HELVETIA



- Ceramic disc assures durability and long-lasting performance
- Easy 1/4 turn handle rotation
- High-engineered resin handles and premium metal valve
- Chrome finish resist corrosion and tarnishing
- 1/2" female connection
- 2.11 GPM (8 lpm) maximum flow rate at 80 psi
- NTC 1644 compliance
- Working temperature: 41-160 °F (5 - 71.1 °C)
- The 01-0935-11 package Includes BL-2430-11 Helvetia shower head

Click aquí

CODE	DESCRIPTION	PRESENTATION	UND. PER PACK
01-0935-11SR	8" (20 cm) Helvetia two handle mixer (valve only)	Box	12
01-0935-11	8" (20 cm) Helvetia two handle shower mixer+ shower head.	Box	12

KRISTHAL



- Ceramic disc assures durability and long-lasting performance
- Easy 1/4 turn handle rotation
- Acrylic handles and premium metal valve body
- Chrome finish resist corrosion and tarnishing
- 1/2" female connection
- 2.11 GPM (8 lpm) maximum flow rate at 80 psi
- NTC 1644 compliance
- Working temperature: 41-160 °F (5 - 71.1 °C)
- The 01-1135-00 package Includes BL-1130-11 Kristhal shower head

Click aquí

CODE	DESCRIPTION	PRESENTATION	UND. PER PACK
01-1135-00SR	8" (20 cm) Kristhal two handle mixer (valve only)	Bag	12
01-1135-00	8" (20 cm) Kristhal two handle mixer + shower head	Box	12

ATLÁNTICO



- Ceramic disc assures durability and long-lasting performance
- Easy 1/4 turn handle rotation
- High-engineered resin handles and premium metal valve
- Chrome finish resist corrosion and tarnishing
- 1/2" female connection
- 2.11 GPM (8 lpm) maximum flow rate at 80 psi
- NTC 1644 compliance
- Working temperature: 41-160 °F (5 - 71.1 °C)
- The 01-1335-11 package Includes BL-1430-11 Genesis shower head

Click aquí

CODE	DESCRIPTION	PRESENTATION	UND. PER PACK
01-1335-11SR	8" (20 cm) Atlantico two handle mixer (valve only)	Box	12
01-1335-11	8" (20 cm) Atlantico two handle shower mixer + shower head	Box	12

8" TWO HANDLE SHOWER

TOSCANA



- Ceramic disc assures durability and long-lasting performance
- Easy 1/4 turn handle rotation
- Highly engineered resin handles and premium metal valve
- Chrome finish resist corrosion and tarnishing
- 1/2" female connection
- 2.11 GPM (8 lpm) maximum flow rate at 80 psi
- NTC 1644 compliance
- Working temperature: 41-160 °F (5 - 71.1 °C)

Click aquí

CODE	DESCRIPTION	PRESENTATION	UND. PER PACK
01-1435-11SR	8" (20 cm) Toscana two handle shower mixer (valve only)	Box	12

PIANA



- Ceramic disc assures durability and long-lasting performance
- Easy 1/4 turn handle rotation
- Highly engineered resin handles and premium metal valve
- Chrome finish resist corrosion and tarnishing
- 1/2" female connection
- 2.51 GPM (9.5 lpm) maximum flow rate at 80 psi
- NTC 1644 compliance
- Working temperature: 41-160 °F (5 - 71.1 °C)
- The 01-1535-211 package Includes BL-8530-11 Vico shower headpackage

Click aquí

CODE	DESCRIPTION	PRESENTATION	UND. PER PACK
01-1535-11SR	8" (20 cm) Piana two handle mixer (valve only)	Box	12
01-1535-211	8" (20 cm) Piana two handle mixer + shower head	Box	12

HELIX PALA



- Ceramic disc assures durability and long-lasting performance
- Easy 1/4 turn handle rotation
- Highly engineered resin handles and premium metal valve
- Chrome finish resist corrosion and tarnishing
- 1/2" female connection
- 2.51 GPM (9.5 lpm) maximum flow rate at 80 psi
- NTC 1644 compliance
- Working temperature: 41-160 °F (5 - 71.1 °C)
- Includes BL-1430-11 Genesis showerhead within 01-1735-11 package

Click aquí

CODE	DESCRIPTION	PRESENTATION	UND. PER PACK
01-1735-11SR	8" Helix Pala two handle mixer (valve only)	Box	12
01-1735-11	8" Helix Pala two handle mixer + shower head	Box	12

TEDESCA

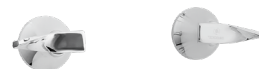


- Ceramic disc assures durability and long-lasting performance
- Easy 1/4 turn handle rotation
- Highly engineered resin handles and premium metal valve
- Chrome finish resist corrosion and tarnishing
- 1/2" female connection
- 2.11 GPM (8 lpm) maximum flow rate at 80 psi
- NTC 1644 compliance
- Working temperature: 41-160 °F (5 - 71.1 °C)
- Includes BL-2430-11 Helvetia showerhead within 01-1822-11 package

Click aquí

CODE	DESCRIPTION	PRESENTATION	UND. PER PACK
01-1835-11SR	8" (20 cm) Tedesca two handle mixer (valve only)	Box	12
01-1822-11	8" (20 cm) Tedesca two handle shower mixer	Box	12

PRISTINA



- Ceramic disc assures durability and long-lasting performance
- Easy 1/4 turn handle rotation
- Highly engineered resin handles and premium metal valve
- Chrome finish resist corrosion and tarnishing
- 1/2" female connection
- 2.11 GPM (8 lpm) maximum flow rate at 80 psi
- NTC 1644 compliance
- Working temperature: 41-160 °F (5 - 71.1 °C)

Click aquí

CODE	DESCRIPTION	PRESENTATION	UND. PER PACK
01-2835-11SR	8" (20 cm) Pristina two handle mixer (valve only)	Box	12

ONE HANDLE SHOWER



CALIMA

- Ceramic disc assures durability and long-lasting performance
- Easy 1/4 turn handle rotation
- Premium metal construction
- Chrome finish resist corrosion and tarnishing
- Water flow controlled with one volume handle
- 1/2" female connection
- Maximum flow rate depends on showerhead
- NTC 1644 compliance
- Working temperature: 41-160 °F (5 - 71.1 °C)

Click aquí

CODE	DESCRIPTION	PRESENTATION	UND. PER PACK
01-0823-11	Calima one handle (valve only)	Box	24



HELVETIA

- Ceramic disc assures durability and long-lasting performance
- Easy 1/4 turn handle rotation
- Highly engineered resin handle and premium metal valve body
- Chrome finish resist corrosion and tarnishing
- Waterflow controlled with one volume handle
- 1/2" female connection
- 2.38 GPM (9 lpm) maximum flow rate at 80 psi
- NTC 1644 compliance
- Working temperature: 41-160 °F (5 - 71.1 °C)
- Includes BL-2430-11 Helvetia showerhead within 01-0934-11 package

Click aquí

CODE	DESCRIPTION	PRESENTATION	UND. PER PACK
01-0933-11	Helvetia one handle (valve only)	Box	24
01-0934-11	Helvetia one handle shower	Box	12



KRISTHAL

- Ceramic disc assures durability and long-lasting performance
- Easy 1/4 turn handle rotation
- Acrylic handle and premium metal valve body
- Chrome finish resist corrosion and tarnishing
- Waterflow controlled with one volume handle
- 1/2" female connection
- 2.11 GPM (8 lpm) maximum flow rate at 80 psi
- NTC 1644 compliance
- Working temperature: 41-160 °F (5 - 71.1 °C)
- Includes BL-1130-11 Kristhal shower head within 01-1134-00 package

Click aquí

CODE	DESCRIPTION	PRESENTATION	UND. PER PACK
01-1133-00	Kristhal one handle (valve only)	Bag	24
01-1134-00	Kristhal one handle shower	Box	24



ATLÁNTICO

- Ceramic disc assures durability and long-lasting performance
- Easy 1/4 turn handle rotation
- Highly engineered resin handle and premium metal valve body
- Chrome finish resist corrosion and tarnishing
- Water flow controlled with one volume handle
- Includes water-saving Genesis showerhead
- 1/2" female connection
- 2.51 GPM (9.5 lpm) maximum flow rate at 80 psi
- NTC 1644 compliance
- Working temperature: 41-160 °F (5 - 71.1 °C)
- Includes BL-1430-11 Genesis shower head within 01-1334-11 package

Click aquí

CODE	DESCRIPTION	PRESENTATION	UND. PER PACK
01-1333-11	Atlántico one handle (valve only)	Box	24
01-1334-11	Atlántico one handle shower	Box	24



TOSCANA

- Ceramic disc assures durability and long-lasting performance
- Easy 1/4 turn handle rotation
- Highly engineered resin handle and premium metal valve body
- Chrome finish resist corrosion and tarnishing
- Water flow controlled with one volume handle
- 1/2" female connection
- 2.11 GPM (8 lpm) maximum flow rate at 80 psi
- NTC 1644 compliance
- Working temperature: 41-160 °F (5 - 71.1 °C)

Click aquí

CODE	DESCRIPTION	PRESENTATION	UND. PER PACK
01-1433-11	Toscana one handle (valve only)	Box	24

ONE HANDLE SHOWER



PIANA

- Ceramic disc assures durability and long-lasting performance
- Easy 1/4 turn handle rotation
- Highly engineered resin handle and premium metal valve
- Chrome finish resist corrosion and tarnishing
- Water flow controlled with one volume handle
- 1/2" female connection
- 2.51 GPM (9.5 lpm) maximum flow rate at 80 psi
- NTC 1644 compliance
- Working temperature: 41-160 °F (5 - 71.1 °C)
- Includes BL-8530-11 Vico shower head within 01-1534-211 package

CODE	DESCRIPTION	PRESENTATION	UND. PER PACK
01-1533-11	Piana one handle (valve only)	Box	24
01-1534-211	Piana one handle shower	Box	12

Click aquí



HELIX PALA

- Ceramic disc assures durability and long-lasting performance
- Easy 1/4 turn handle rotation
- Highly engineered resin handle and premium metal valve body
- Chrome finish resist corrosion and tarnishing
- Water flow controlled with one volume handle
- 1/2" female connection
- 2.51 GPM (9.5 lpm) maximum flow rate at 80 psi
- NTC 1644 compliance
- Working temperature: 41-160 °F (5 - 71.1 °C)
- Includes BL-1430-11 Genesis shower head within 01-1734-11 package

CODE	DESCRIPTION	PRESENTATION	UND. PER PACK
01-1733-11	Helix Pala one handle (valve only)	Box	24
01-1734-11	Helix Pala one handle shower	Box	24

Click aquí



TEDESCA

- Ceramic disc assures durability and long-lasting performance
- Easy 1/4 turn handle rotation
- Highly engineered resin handle and premium metal valve body
- Chrome finish resist corrosion and tarnishing
- Waterflow controlled with one volume handle
- 1/2" female connection
- 2.11 GPM (8 lpm) maximum flow rate at 80 psi
- NTC 1644 compliance
- Working temperature: 41-160 °F (5 - 71.1 °C)

CODE	DESCRIPTION	PRESENTATION	UND. PER PACK
01-1833-11	Tedesca one handle (valve only)	Box	24

Click aquí



PRISTINA

- Ceramic disc assures durability and long-lasting performance
- Easy 1/4 turn handle rotation
- Premium metal construction
- Chrome finish resist corrosion and tarnishing
- Water flow controlled with one volume handle
- 1/2" female connection
- 2.11 GPM (8 lpm) maximum flow rate at 80 psi
- NTC 1644 compliance
- Working temperature: 41-160 °F (5 - 71.1 °C)

CODE	DESCRIPTION	PRESENTATION	UND. PER PACK
01-2833-11	Pristina one handle (valve only)	Box	24

Click aquí

FULL BORE BALL VALVE



HELIX PALA ESFERA

- Full bore water flow
- Special for pressures below 20psi
- Easy 1/4 turn handle rotation
- Highly engineered resin handle and brass valve body
- Chrome finish resist corrosion and tarnishing
- Water flow controlled with one volume handle
- 1/2" female connection
- Maximum flow rate: depends on shower
- NTC 1644 compliance
- Working temperature: 41-160 °F (5 - 71.1 °C)

CODE	DESCRIPTION	PRESENTATION	UND. PER PACK
01-1770-11	Helix Pala full bore ball (valve only)	Box	24

Click aquí

SHOWERHEADS



KRISTHAL

- Shower head dimension: 2 3/8" (6 cm) diameter spray head
- Distance from wall line to shower head: 5.9" (15 cm)
- Includes smart water-saving technology
- Single-function rainshower
- Include arm spout for wall installation
- Brass swivel ball assembly for different water outlet angles
- Filter traps dirt and fine particles
- Chrome finish resist corrosion and tarnishing
- 1/2" male connection
- 1.9 GPM (7.3 lpm) maximum flow rate at 80 psi
- NTC 1644 compliance
- Working temperature: 41-160 °F (5 - 71.1 °C)

Click aquí

CODE	DESCRIPTION	PRESENTATION	UND. PER PACK
01-1130-11	Kristhal movable shower head	Box	48



GÉNESIS I

- Shower head dimension: 3 1/2" (9 cm) diameter spray head
- Distance from wall line to shower head: 6 1/2" (16.5 cm)
- Includes smart water-saving technology
- Single-function rain shower
- Include wall installation arm spout
- Brass swivel ball assembly for different water outlet angles
- Filter traps dirt and fine particles
- Chrome finish resist corrosion and tarnishing
- 1/2" male connection
- 2.51 GPM (9.5 lpm) maximum flow rate at 80 psi
- NTC 1644 compliance
- Working temperature: 41-160 °F (5 - 71.1 °C)

Click aquí

CODE	DESCRIPTION	PRESENTATION	UND. PER PACK
BL-1430-11	Genesis I shower head	Blister cardboard	12



5 FUNCTIONS HELVETIA

- Shower head dimension: 3 1/2" (9 cm) diameter spray head
- Distance from wall line to shower head: 6 1/2" (16.5 cm)
- Includes smart water saving technology
- 5 function shower head
- Includes wall installation arm spout
- Brass swivel ball assembly for different water outlet angles
- Filter traps dirt and fine particles
- Chrome finish resists corrosion and tarnishing
- 1/2" male connection
- 2.51 GPM (9.5 lpm) maximum flow rate at 80 psi
- NTC 1644 compliance
- Working temperature: 41-160 °F (5 - 71.1 °C)

Click aquí

CODE	DESCRIPTION	PRESENTATION	UND. PER PACK
BL-2430-11	5 function Helvetia shower head	Blister cardboard	12



TORINO

- Shower head dimension: 9"X7" (23 X 18 cm)
- Distance from wall line to shower head: 2 3/8" (6 cm)
- Includes smart water saving technology
- Single-function rain shower
- Includes an extension arm spout for larger distances or roof installation
- Brass swivel ball assembly for different water outlet angles
- Filter traps dirt and fine particles
- Chrome finish resists corrosion and deterioration
- 1/2" male connection
- 2.51 GPM (9.5 lpm) maximum flow rate at 80 psi
- NTC 1644 compliance
- Working temperature: 41-160 °F (5 - 71.1 °C)

Click aquí

CODE	DESCRIPTION	PRESENTATION	UND. PER PACK
BL-3730-11	Torino shower head	Blister cardboard	12



3 FUNCTIONS CALIMA

- Shower head dimension: 4" (10 cm) diameter spray head
- Distance from wall line to shower head: 8 1/4" (21 cm)
- Includes smart water saving technology
- 3 function shower head
- Includes wall installation arm spout
- Brass swivel ball assembly for different water outlet angles
- Filter traps dirt and fine particles
- Chrome finish resist corrosion and tarnishing
- 1/2" male connection
- 2.11 GPM (8 lpm) maximum flow rate at 80 psi
- NTC 1644 compliance
- Working temperature: 41-160 °F (5 - 71.1 °C)

Click aquí

CODE	DESCRIPTION	PRESENTATION	UND. PER PACK
BL-8430-11	3 functions Calima showerhead	Blister cardboard	8

SHOWERHEADS



VICO

- Shower head dimension: 4" (10 X 10 cm)
- Distance from wall line to shower head: 13 1/2" (9 cm)
- Includes smart water saving technology
- Single-function rainshower
- Includes wall installation arm spout
- Brass swivel ball assembly for different water outlet angles
- Filter traps dirt and fine particles

- Chrome finish resist corrosion and tarnishing
- 1/2" male connection
- 2.38 GPM (9 lpm) maximum flow rate at 80 psi
- NTC 1644 compliance
- Working temperature: 41-160 °F (5 - 71.1 °C)

Click aquí

CODE	DESCRIPTION	PRESENTATION	UND. PER PACK
BL-8530-11	Vico shower head	Blister cardboard	12



ROUND ISEO

- Shower head dimension: 8 5/8" (22 cm) diameter spray head
- Distance from wall line to shower head: 13 3/4" (35 cm)
- Includes smart water-saving technology
- Single-function rainshower
- Includes extension arm spout for a wide distance or roof installation
- Brass swivel ball assembly for different water outlet angles
- Filter traps dirt and fine particles

- Chrome finish resist corrosion and tarnishing
- 1/2" male connection
- 2.38 GPM (9 lpm) maximum flow rate at 80 psi
- NTC 1644 compliance
- Working temperature: 41-160 °F (5 - 71.1 °C)

Click aquí

CODE	DESCRIPTION	PRESENTATION	UND. PER PACK
BL-8630-11	Round Iseo shower head	Blister cardboard	12



SQUARE ISEO

- Shower head dimension: 8 7/16" X 8 7/16" (21.5 X 21.5 cm)
- Distance from wall line to shower head: 13 3/4" (35 cm)
- Includes smart water-saving technology
- Single-function rain shower
- Includes extension arm spout for a wide distance or roof installation
- Brass swivel ball assembly for different water outlet angles
- Filter traps dirt and fine particles

- Chrome finish resist corrosion and tarnishing
- 1/2" male connection
- 2.38 GPM (9 lpm) maximum flow rate at 80 psi
- NTC 1644 compliance
- Working temperature: 41-160 °F (5 - 71.1 °C)

Click aquí

CODE	DESCRIPTION	PRESENTATION	UND. PER PACK
BL-8730-11	Square Iseo shower head	Blister cardboard	12

BATHTUB SPOUT

PULL-UP BATHTUB SPOUT



- Highly engineered resin construction with chrome finish
- 4 3/4" (12 cm) tub spout length
- Wall installation
- Includes brass push button
- Brass pull-up
- Chrome finish resist corrosion and tarnishing

- 1/2" female connection
- NTC 1644 compliance
- Working temperature: 41-160 °F (5 - 71.1 °C)
- Works in conjunction with 01-1822-11

Click aquí

CODE	DESCRIPTION	PRESENTATION	UND. PER PACK
RB-0285-11	Plastic bathtub spout with push button	Blister Pack	24



BATHTUB SPOUT

- Highly engineered resin construction with chrome finish
- 4 3/4" (12 cm) tub spout length
- Wall installation
- Works in conjunction with shower mixer 01-0846-11
- Chrome finish resist corrosion and tarnishing

- 1/2" female connection
- NTC 1644 compliance
- Working temperature: 41-160 °F (5 - 71.1 °C)

Click aquí

CODE	DESCRIPTION	PRESENTATION	UND. PER PACK
RB-0286-11	Plastic chrome bathtub spout	Blister Pack	24

SHOWER SPOUT

ROOF SHOWER SPOUT



- Premium metal construction
- Dimension: 5 3/4" (14,5 cm) long
- Includes extension screw
- Wall or roof installation
- Chrome finish resist corrosion and tarnishing
- 1/2" male connection
- Female x female extension connection
- Working temperature: 41-160 °F (5 - 71.1 °C)

Click aquí

CODE	DESCRIPTION	PRESENTATION	UND. PER PACK
RB-0245-11S	Brass roof shower spout	Skin Pack	6

HANDSHOWERS

ABRUZZO



Click aquí

- Dimensions: 2 3/8" (6 cm) x 4 1/2" (11.5 cm)
- Includes wall bracket and diverter
- 4.9 ft (150 cm) metal hose
- Single-function rainshower
- Chrome finish resist corrosion and tarnishing
- 1/2" male connection
- 3.3 GPM (12,5 lpm) maximum flow rate at 80 psi
- NTC 1644 compliance
- Working temperature: 41-160 °F (5 - 71.1 °C)
- Water outlet diameter: 3 3/8" (8,5 cm)

CODE	DESCRIPTION	PRESENTATION	UND. PER PACK
BL-0693-11	Abruzzo hand shower with hose	Blister cardboard	12

IZMIR 15 cm



Click aquí

- Shower head and hand shower function
- Shower head diameter: 5.9" (15 cm)
- 5 different water functions
- Connection and movable bracket for different water outlet angles
- 4.9 ft (150 cm) plastic hose
- Chrome finish resist corrosion and tarnishing
- 1/2" female connection
- 3.17 GPM (12 lpm) maximum flow rate at 80 psi
- NTC 1644 compliance
- Working temperature: 41-160 °F (5 - 71.1 °C)

CODE	DESCRIPTION	PRESENTATION	UND. PER PACK
BL-0698-11	5.9" (15 cm) Izmir hand shower	Pet Blister	12

IZMIR 8.5 cm



Click aquí

- 5 different water functions
- Includes wall bracket and diverter
- 4.9 ft (150 cm) plastic hose
- Single-function rain shower
- Chrome finish resist corrosion and tarnishing
- 1/2" male diverter connection
- 3 GPM (11,5 lpm) maximum flow rate at 80 psi
- NTC 1644 compliance
- Working temperature: 41-160 °F (5 - 71.1 °C)
- Water outlet diameter: 3 3/8" (8,5 cm)

CODE	DESCRIPTION	PRESENTATION	UND. PER PACK
TB-1923-11	3 3/8" (8,5 cm) Izmir hand shower with diverter and hose	Pack	12

IZMIR 8.5 cm WITH INDEPENDENT VALVE



Click aquí

- 5 different water functions
- Includes wall bracket and diverter
- 150 cm plastic hose
- Single-function rainshower
- Chrome finish resist corrosion and tarnishing
- 1/2" male diverter connection
- 11,5 lpm maximum flow rate at 80 psi
- NTC 1644 compliance
- Working temperature between 5-71°C

CODE	DESCRIPTION	PRESENTATION	UND. PER PACK
TB-2000-11	3 3/8" (8,5 cm) Izmir 3 function hand shower with independent valve	Pack	12

HANDSHOWERS



Click aquí 

150 cm HOSE

- RB-0593-11: Metal hose and screws
- RB-0596-11: Plastic hose and screws
- Length: 4.9 ft (150 cm)
- Chrome finish resist corrosion and tarnishing
- Works in conjunction with every Gricol hand shower
- 1/2" Female x 1/2" female connection
- Maximum pressure: 100 psi
- Working temperature: Between 5-40 °C (41 - 104 °F)

CODE	DESCRIPTION	PRESENTATION	UND. PER PACK
RB-0593-11	4.9 ft (150 cm) Brass hose for hand shower	Skin Pack	12
RB-0596-11	4.9 ft (150 cm) chrome plastic hose for hand shower	Blister Pack	10



Click aquí 

SHORT PLASTIC DIVERTER

- Highly engineered construction
- Length: 2 1/2" (6.5 cm)
- Conventional handle close
- Works in conjunction with every Gricol shower
- Chrome finish resist corrosion and tarnishing
- 1/2" FxM connection within scoup and shower
- 1/2" female shower connection
- 1/2" male handshower connection
- NTC 1644 compliance
- Working temperature: 41-160 °F (5 - 71.1 °C)

CODE	DESCRIPTION	PRESENTATION	UND. PER PACK
RB-0739-11S	Short plastic hand shower diverter	Skin Pack	6



Click aquí 

LONG PLASTIC DIVERTER

- Highly engineered construction
- Length: 3 5/16" (8.4 cm)
- Wall installation
- Conventional handle close
- Works in conjunction with every Gricol shower
- Chrome finish resist corrosion and tarnishing
- 1/2" F X M connection within hand shower and shower
- 1/2" female shower connection
- 1/2" male hand shower connection
- NTC 1644 compliance
- Working temperature: 41-160 °F (5 - 71.1 °C)

CODE	DESCRIPTION	PRESENTATION	UND. PER PACK
RB-1960-11S	Long plastic hand shower diverter	Skin Pack	6

ONE LEVER HANDLE BATHROOM FAUCET



Click aquí 

VIVALDI

- Ceramic disc cartridge assures durability and long-lasting performance
- Single handle provides flow and temperature control
- Premium metal construction
- 7 3/16" (18.3 cm) spout reach
- Single hole installation
- Includes smart water-saving technology
- Chrome finish resist corrosion and tarnishing
- Includes flex hose with 1/2" female connection
- 1.27 GPM (5.2 lpm) maximum flow rate at 80 psi
- NTC 1644 compliance
- Working temperature: 41-160 °F (5 - 71.1 °C)

CODE	DESCRIPTION	PRESENTATION	UND. PER PACK
01-2103-11SD	Vivaldi single handle short-height bathroom faucet	Box	12



Click aquí 

VIVALDI

- Ceramic disc cartridge assures durability and long-lasting performance
- Single handle provides flow and temperature control
- Premium metal construction
- 7 3/16" (18.3 cm) spout reach
- Single-hole installation
- Includes smart water saving technology
- Chrome finish resist corrosion and tarnishing
- Includes flex hose with 1/2" female connection
- 1.27 GPM (5.2 lpm) maximum flow rate at 80 psi
- NTC 1644 compliance
- Working temperature: 41-160 °F (5 - 71.1 °C)

CODE	DESCRIPTION	PRESENTATION	UND. PER PACK
01-2106-11SD	Vivaldi single handle high-height bathroom faucet	Box	6

ONE LEVER HANDLE BATHROOM FAUCET



SION

- Ceramic disc cartridge assures durability and long-lasting performance
- Single handle provides flow and temperature control
- Highly engineered resin body and premium metal lever handle
- 6" (15.2 cm) spout reach
- Single hole installation
- Includes smart water-saving technology
- Chrome finish resist corrosion and tarnishing
- Adjustable aerator for different water outlet angles
- Includes flex hose with 1/2" female connection
- 1.85 GPM (7 lpm) maximum flow rate at 80 psi
- NTC 1644 compliance
- Working temperature: 41-160 °F (5 - 71.1 °C)

Click aquí

CODE	DESCRIPTION	PRESENTATION	UND. PER PACK
01-2603-11	Sion single handle short-height bathroom faucet	Box	12



SION

- Ceramic disc cartridge assures durability and long-lasting performance
- Single handle provides flow and temperature control
- Highly engineered resin body and premium metal lever handle
- 11 7/16" (29 cm) spout reach
- Single hole installation
- Includes smart water saving technology
- Chrome finish resist corrosion and tarnishing
- Adjustable aerator for different water outlet angles
- Includes flex hose with 1/2" female connection
- 1.27 GPM (5.2 lpm) maximum flow rate at 80 psi
- NTC 1644 compliance
- Working temperature: 41-160 °F (5 - 71.1 °C)

Click aquí

CODE	DESCRIPTION	PRESENTATION	UND. PER PACK
01-2606-11	Sion single handle high-height bathroom faucet	Box	6



VOGA

- Ceramic disc cartridge assures durability and long-lasting performance
- Single handle provides flow and temperature control
- Premium metal construction
- 6 11/16" (17 cm) spout reach
- Single-hole installation
- Includes smart water-saving technology
- Chrome finish resist corrosion and tarnishing
- Includes flex hose with 1/2" female connection
- 1.27 GPM (5.2 lpm) maximum flow rate at 80 psi
- NTC 1644 compliance
- Working temperature: 41-160 °F (5 - 71.1 °C)



Click aquí

CODE	DESCRIPTION	PRESENTATION	UND. PER PACK
01-3703-11	Voga single handle short-height bathroom faucet	Box	12



VOGA

- Ceramic disc cartridge assures durability and long-lasting performance
- Single handle provides flow and temperature control
- Premium metal construction
- 12" (30.06 cm) spout height
- Single-hole installation
- Includes smart water saving technology
- Chrome finish resist corrosion and tarnishing
- Includes flex hose with 1/2" female connection
- 8.2 lpm (2.14 GPM) maximum flow rate at 80 psi
- NTC 1644 compliance
- Working temperature: 41-160 °F (5 - 71.1 °C)



Click aquí

CODE	DESCRIPTION	PRESENTATION	UND. PER PACK
01-3706-11	Voga single handle short-height bathroom faucet	Box	5

4" TWO HANDLE BATHROOM FAUCET



CALIMA

- Ceramic disc assures durability and long-lasting performance
- Easy 1/4 turn handle rotation
- Premium metal construction
- Two holes installation
- Includes smart water-saving technology
- Chrome finish resist corrosion and tarnishing
- 1/2" male connection
- 1.27 GPM (5.2 lpm) maximum flow rate at 80 psi
- NTC 1644 compliance
- Working temperature: 41-160 °F (5 - 71.1 °C)

Click aqui 

CODE	DESCRIPTION	PRESENTATION	UND. PER PACK
01-0811-11	4" (10 cm) Calima two handle mixer center set bathroom faucet	Box	12



HELVETIA

- Ceramic disc assures durability and long-lasting performance
- Easy 1/4 turn handle rotation
- Highly engineered resin construction
- Two holes installation
- Includes smart water-saving technology
- Chrome finish resist corrosion and tarnishing
- 1/2" male connection
- 1.27 GPM (5.2 lpm) maximum flow rate at 80 psi
- NTC 1644 compliance
- Working temperature: 41-160 °F (5 - 71.1 °C)

Click aqui 

CODE	DESCRIPTION	PRESENTATION	UND. PER PACK
01-0902-11	4" (10 cm) Helvetia two handle mixer center set bathroom faucet	Box	12



KRISTHAL

- Ceramic disc assures durability and long-lasting performance
- Easy 1/4 turn handle rotation
- Highly engineered resin body and acrylic handles
- Two holes installation
- Includes smart water saving technology
- Chrome finish resist corrosion and tarnishing
- 1/2" male connection
- 1.27 GPM (5.2 lpm) maximum flow rate at 80 psi
- NTC 1644 compliance
- Working temperature: 41-160 °F (5 - 71.1 °C)

Click aqui 

CODE	DESCRIPTION	PRESENTATION	UND. PER PACK
01-1102-00	4" (10 cm) Kristhal two handle mixer center set bathroom faucet	Box	12



ATLÁNTICO

- Ceramic disc assures durability and long-lasting performance
- Easy 1/4 turn handle rotation
- Highly engineered resin construction
- Two holes installation
- Includes smart water-saving technology
- Chrome finish resist corrosion and tarnishing
- 1/2" male connection
- 1.27 GPM (5.2 lpm) maximum flow rate at 80 psi
- NTC 1644 compliance
- Working temperature: 41-160 °F (5 - 71.1 °C)

Click aqui 

CODE	DESCRIPTION	PRESENTATION	UND. PER PACK
01-1302-11	4" (10 cm) Atlantico two handle mixer center set bathroom faucet	Box	12



TOSCANA

- Ceramic disc assures durability and long-lasting performance
- Easy 1/4 turn handle rotation
- Highly engineered resin construction
- Two holes installation
- Includes smart water-saving technology
- Chrome finish resist corrosion and tarnishing
- 1/2" male connection
- 1.27 GPM (5.2 lpm) maximum flow rate at 80 psi
- NTC 1644 compliance
- Working temperature: 41-160 °F (5 - 71.1 °C)

Click aqui 

CODE	DESCRIPTION	PRESENTATION	UND. PER PACK
01-1402-11	4" (10 cm) Toscana two handle mixer center set bathroom faucet	Box	12

4" TWO HANDLE BATHROOM FAUCET



Click aqui

TOSCANA BAR

- Ceramic disc assures durability and long-lasting performance
- Easy 1/4 turn handle rotation
- Highly engineered resin construction
- High arch 360° rotating swing spout
- Two holes installation
- Includes smart water-saving technology
- Chrome finish resist corrosion and tarnishing
- 360° rotating spout head allowing water outlet in different angles
- 1/2" male connection
- 1.27 GPM (5.2 lpm) maximum flow rate at 80 psi
- NTC 1644 compliance
- Working temperature: 41-160 °F (5 - 71.1 °C)

CODE	DESCRIPTION	PRESENTATION	UND. PER PACK
01-1462-11	4" (10 cm) Toscana two handle mixer center set bathroom faucet	Box	12



Click aqui

PIANA

- Ceramic disc assures durability and long-lasting performance
- Easy 1/4 turn handle rotation
- Highly engineered resin construction
- Two hole installation
- Includes smart water saving technology
- Chrome finish resist corrosion and tarnishing
- 1/2" male connection
- 1.27 GPM (5.2 lpm) maximum flow rate at 80 psi
- NTC 1644 compliance
- Working temperature: 41-160 °F (5 - 71.1 °C)

CODE	DESCRIPTION	PRESENTATION	UND. PER PACK
01-1502-11	4" (10 cm) Piana two handle mixer center set bathroom faucet	Box	12



Click aqui

HELIX PALA

- Ceramic disc assures durability and long-lasting performance
- Easy 1/4 handle rotation
- Highly engineering resin construction
- Two hole installation
- Includes smart water-saving technology
- Chrome finish resist corrosion and tarnishing
- 1/2" male connection
- 1.27 GPM (5.2 lpm) maximum flow rate at 80 psi
- NTC 1644 compliance
- Working temperature: 41-160 °F (5 - 71.1 °C)

CODE	DESCRIPTION	PRESENTATION	UND. PER PACK
01-1702-11	4" Helix Pala two handle centerset bathroom faucet	Box	12



Click aqui

TEDESCA

- Ceramic disc assures durability and long-lasting performance
- Easy 1/4 turn handle rotation
- Highly engineered resin construction
- Two holes installation
- Includes smart water-saving technology
- Chrome finish resist corrosion and tarnishing
- 1/2" male connection
- 1.27 GPM (5.2 lpm) maximum flow rate at 80 psi
- NTC 1644 compliance
- Working temperature: 41-160 °F (5 - 71.1 °C)
- Connectors not included

CODE	DESCRIPTION	PRESENTATION	UND. PER PACK
01-1802-11	4" (10 cm) Tedesca two handle mixer center set bathroom faucet	Box	12



Click aqui

TEDESCA BAR

- Ceramic disc assures durability and long-lasting performance
- Easy 1/4 turn handle rotation
- Highly engineered resin construction
- High arch 360° rotating swing spout
- Two hole installation
- Includes smart water-saving technology
- Chrome finish resist corrosion and tarnishing
- 1/2" male connection
- 1.27 GPM (5.2 lpm) maximum flow rate at 80 psi
- NTC 1644 compliance
- Working temperature: 41-160 °F (5 - 71.1 °C)

CODE	DESCRIPTION	PRESENTATION	UND. PER PACK
01-1808-11	4" (10 cm) Tedesca two handle mixer center set bathroom faucet	Box	12

4" TWO HANDLE BATHROOM FAUCET



PRISTINA

- Ceramic disc assures durability and long-lasting performance
- Easy 1/4 turn handle rotation
- Highly engineered resin body and premium metal handles
- Two holes installation
- Includes smart water-saving technology
- Chrome finish resist corrosion and tarnishing
- 1/2" male connection
- 1.27 GPM (5.2 lpm) maximum flow rate at 80 psi
- NTC 1644 compliance
- Working temperature: 41-160 °F (5 - 71.1 °C)

Click aquí

CODE	DESCRIPTION	PRESENTATION	UND. PER PACK
01-2802-11	4" (10 cm) Pristina two handle mixer center set bathroom faucet	Box	12

8" TWO HANDLE BATHROOM FAUCET



PORTOBELLO

- Ceramic disc assures durability and long-lasting performance
- Easy 1/4 turn handle rotation
- Premium metal construction
- Three hole installation
- Includes smart water-saving technology
- Chrome finish resist corrosion and tarnishing
- 1/2" male connection
- 1.9 GPM (7.2 lpm) maximum flow rate at 80 psi
- NTC 1644 compliance
- Working temperature: 41-160 °F (5 - 71.1 °C)

Click aquí

CODE	DESCRIPTION	PRESENTATION	UND. PER PACK
01-0203-11	8" (20 cm) Portobello two handle mixer wide spread bathroom faucet	Box	12

CALIMA



- Ceramic disc assures durability and long-lasting performance
- Easy 1/4 turn handle rotation
- Premium metal construction
- Three hole installation
- Includes smart water-saving technology
- Chrome finish resist corrosion and tarnishing
- 1/2" male connection
- 1.9 GPM (7.2 lpm) maximum flow rate at 80 psi
- NTC 1644 compliance
- Working temperature: 41-160 °F (5 - 71.1 °C)

Click aquí

CODE	DESCRIPTION	PRESENTATION	UND. PER PACK
01-0812-11	8" Calima two handle widespread bathroom faucet	Box	1

HELVETIA



- Ceramic disc assures durability and long-lasting performance
- Easy 1/4 turn handle rotation
- Highly engineered resin construction
- High arch 360° rotating swing spout
- Three hole installation
- Includes smart water-saving technology
- Chrome finish resist corrosion and tarnishing
- 1/2" male connection
- 1.9 GPM (7.2 lpm) maximum flow rate at 80 psi
- NTC 1644 compliance
- Working temperature: 41-160 °F (5 - 71.1 °C)

Click aquí

CODE	DESCRIPTION	PRESENTATION	UND. PER PACK
01-0903-11	8" (20 cm) Helvetia two handle mixer wide spread bathroom faucet	Box	12

KRISTHAL



- Ceramic disc assures durability and long-lasting performance
- Easy 1/4 turn handle rotation
- Highly engineered resin body and acrylic handles
- Three hole installation
- Includes smart water-saving technology
- Chrome finish resist corrosion and tarnishing
- 1/2" male connection
- 1.27 GPM (5.2 lpm) maximum flow rate at 80 psi
- NTC 1644 compliance
- Working temperature: 41-160 °F (5 - 71.1 °C)

Click aquí

CODE	DESCRIPTION	PRESENTATION	UND. PER PACK
01-1103-00	8" Kristhal two handle widespread bathroom faucet	Box	12

8" TWO HANDLE BATHROOM FAUCET

ATLÁNTICO



- Ceramic disc assures durability and long-lasting performance
- Easy 1/4 turn handle rotation
- Highly engineered resin construction
- Three hole installation
- Includes smart water-saving technology
- Chrome finish resist corrosion and tarnishing
- 1/2" male connection
- 1.27 GPM (5.2 lpm) maximum flow rate at 80 psi
- NTC 1644 compliance
- Working temperature: 41-160 °F (5 - 71.1 °C)

Click aquí

CODE	DESCRIPTION	PRESENTATION	UND. PER PACK
01-1303-11	8" (20 cm) Atlántico two handle mixer wide spread bathroom faucet	Box	12

TOSCANA



- Ceramic disc assures durability and long-lasting performance
- Easy 1/4 turn handle rotation
- Highly engineered resin construction
- High arch 360° rotating swing spout
- Three hole installation
- Includes smart water saving technology
- Chrome finish resist corrosion and tarnishing
- 360° spouthead allowing water outlet in different angles
- 1/2" male connection
- 1.27 GPM (5.2 lpm) maximum flow rate at 80 psi
- NTC 1644 compliance
- Working temperature: 41-160 °F (5 - 71.1 °C)

Click aquí

CODE	DESCRIPTION	PRESENTATION	UND. PER PACK
01-1403-11	8" Toscana two handle widespread bathroom faucet	Box	12

PIANA



- Ceramic disc assures durability and long-lasting performance
- Easy 1/4 turn handle rotation
- Highly engineered resin construction
- Three hole installation
- Includes smart water-saving technology
- Chrome finish resist corrosion and tarnishing
- 1/2" male connection
- 1.27 GPM (5.2 lpm) maximum flow rate at 80 psi
- NTC 1644 compliance
- Working temperature: 41-160 °F (5 - 71.1 °C)

Click aquí

CODE	DESCRIPTION	PRESENTATION	UND. PER PACK
01-1503-11	8" (20 cm) Piana two handle mixer wide spread bathroom faucet	Box	12

HELIX PALA



- Ceramic disc assures durability and long-lasting performance
- Easy 1/4 turn handle rotation
- Highly engineered resin construction
- Three hole installation
- Includes smart water-saving technology
- Chrome finish resist corrosion and tarnishing
- 1/2" male connection
- 1.27 GPM (5.2 lpm) maximum flow rate at 80 psi
- NTC 1644 compliance
- Working temperature: 41-160 °F (5 - 71.1 °C)

Click aquí

CODE	DESCRIPTION	PRESENTATION	UND. PER PACK
01-1703-11	8" (20 cm) Helix Pala two handle mixer wide spread bathroom faucet	Box	12

TEDESCA



- Ceramic disc assures durability and long-lasting performance
- Easy 1/4 turn handle rotation
- Highly engineered resin construction
- High arch 360° rotating swing spout
- Three hole installation
- Includes smart water-saving technology
- Chrome finish resist corrosion and tarnishing
- 1/2" male connection
- 1.27 GPM (5.2 lpm) maximum flow rate at 80 psi
- NTC 1644 compliance
- Working temperature: 41-160 °F (5 - 71.1 °C)

Click aquí

CODE	DESCRIPTION	PRESENTATION	UND. PER PACK
01-1803-11	8" (20 cm) Tedesca two handle mixer wide spread bathroom faucet	Box	12

8" TWO HANDLE BATHROOM FAUCET



Click aquí

PRISTINA

- Ceramic disc assures durability and long-lasting performance
- Easy 1/4 turn handle rotation
- Highly engineered resin body and premium metal handles
- High arch 360° rotating swing spout
- Three hole installation
- Includes smart water-saving technology
- Chrome finish resist corrosion and tarnishing
- 1/2" male connection
- 1.27 GPM (5.2 lpm) maximum flow rate at 80 psi
- NTC 1644 compliance
- Working temperature: 41-160 °F (5 - 71.1 °C)

CODE	DESCRIPTION	PRESENTATION	UND. PER PACK
01-2803-11	8" (20 cm) Pristina two handle mixer wide spread bathroom faucet	Box	12

8" TWO HANDLE WALL-MOUNTED BATHROOM FAUCET



Click aquí

PORTOBELLO

- Ceramic disc assures durability and long-lasting performance
- Easy 1/4 turn handle rotation
- Premium metal construction
- Three hole installation
- Includes smart water-saving technology
- Chrome finish resist corrosion and tarnishing
- 1/2" female connection
- 1.27 GPM (5.2 lpm) maximum flow rate at 80 psi
- NTC 1644 compliance
- Working temperature: 41-160 °F (5 - 71.1 °C)

CODE	DESCRIPTION	PRESENTATION	UND. PER PACK
01-0208-11	8" (20 cm) Portobello two handle mixer wall mount bathroom faucet	Box	6



Click aquí

PRISTINA

- Ceramic disc assures durability and long-lasting performance
- Easy 1/4 turn handle rotation
- Premium metal construction
- Three hole installation
- Includes smart water-saving technology
- Chrome finish resist corrosion and tarnishing
- 1/2" female connection
- 1.27 GPM (5.2 lpm) maximum flow rate at 80 psi
- NTC 1644 compliance
- Working temperature: 41-160 °F (5 - 71.1 °C)

CODE	DESCRIPTION	PRESENTATION	UND. PER PACK
01-2826-11	8" (20 cm) Pristina two handle mixer wall mount bathroom faucet	Box	12



Click aquí

TEDESCA

- Ceramic disc assures durability and long-lasting performance
- Easy 1/4 turn handle rotation
- Premium metal body and high-engineering resin handles
- Three hole installation
- Includes smart water-saving technology
- Chrome finish resist corrosion and tarnishing
- 1/2" female connection
- 1.27 GPM (5.2 lpm) maximum flow rate at 80 psi
- NTC 1644 compliance
- Working temperature: 41-160 °F (5 - 71.1 °C)

CODE	DESCRIPTION	PRESENTATION	UND. PER PACK
GS-1816-11	8" (20 cm) Tedesca two handle mixer wall mount bathroom faucet	Box	6

ONE HANDLE BATHROOM FACUET



Click aquí

CALIMA

- Ceramic disc assures durability and long-lasting performance
- Easy 1/4 turn handle rotation
- Premium metal construction
- Single hole installation
- Includes smart water-saving technology
- Single water input
- Chrome finish resist corrosion and tarnishing
- 1/2" male connection
- 1.27 GPM (5.2 lpm) maximum flow rate at 80 psi
- NTC 1644 compliance
- Working temperature: 41-160 °F (5 - 71.1 °C)

CODE	DESCRIPTION	PRESENTATION	UND. PER PACK
01-0815-211	Calima brass one handle bathroom faucet	Box	24

ONE HANDLE BATHROOM FACUET



HELVETIA

- Ceramic disc assures durability and long-lasting performance
- Easy 1/4 turn handle rotation
- Highly engineered resin construction
- Single hole installation
- Includes smart water-saving technology
- Single water input
- Chrome finish resist corrosion and tarnishing
- 1/2" male connection
- 1.69 GPM (6.4 lpm) maximum flow rate at 80 psi
- NTC 1644 compliance
- Working temperature: 41-160 °F (5 - 71.1 °C)

Click aquí

CODE	DESCRIPTION	PRESENTATION	UND. PER PACK
01-0900-11	Helvetia one handle bathroom faucet	Box	24



KRISTHAL

- Ceramic disc assures durability and long-lasting performance
- Easy 1/4 turn handle rotation
- Highly engineered resin body and acrylic handle
- Single hole installation
- Includes smart water-saving technology
- Single water input
- Chrome finish resist corrosion and tarnishing
- 1/2" male connection
- 1.69 GPM (6.4 lpm) maximum flow rate at 80 psi
- NTC 1644 compliance
- Working temperature: 41-160 °F (5 - 71.1 °C)

Click aquí

CODE	DESCRIPTION	PRESENTATION	UND. PER PACK
01-1100-00	Kristhal one handle bathroom faucet	Box	24



ATLÁNTICO

- Ceramic disc assures durability and long-lasting performance
- Easy 1/4 turn handle rotation
- Highly engineering resin construction
- Single hole installation
- Includes smart water-saving technology
- Single water input
- Chrome finish resist corrosion and tarnishing
- 1/2" male connection
- 1.69 GPM (6.4 lpm) maximum flow rate at 80 psi
- NTC 1644 compliance
- Working temperature: 41-160 °F (5 - 71.1 °C)

Click aquí

CODE	DESCRIPTION	PRESENTATION	UND. PER PACK
01-1300-11	Atlántico one handle bathroom faucet	Box	24



TOSCANA

- Ceramic disc assures durability and long-lasting performance
- Easy 1/4 turn handle rotation
- Highly engineered resin construction
- Single hole installation
- Includes smart water-saving technology
- Single water input
- Chrome finish resist corrosion and tarnishing
- 1/2" male connection
- 1.69 GPM (6.4 lpm) maximum flow rate at 80 psi
- NTC 1644 compliance
- Working temperature: 41-160 °F (5 - 71.1 °C)

Click aquí

CODE	DESCRIPTION	PRESENTATION	UND. PER PACK
01-1400-11	Toscana one handle bathroom faucet	Box	24



PIANA

- Ceramic disc assures durability and long-lasting performance
- Easy 1/4 turn handle rotation
- Highly engineered resin construction
- Single hole installation
- Includes smart water-saving technology
- Single water input
- Chrome finish resist corrosion and tarnishing
- 1/2" male connection
- 1.69 GPM (6.4 lpm) maximum flow rate at 80 psi
- NTC 1644 compliance
- Working temperature: 41-160 °F (5 - 71.1 °C)

Click aquí

CODE	DESCRIPTION	PRESENTATION	UND. PER PACK
01-1500-11	Piana one handle bathroom faucet	Box	24

ONE HANDLE BATHROOM FACUET



HELIX PALA

- Ceramic disc assures durability and long-lasting performance
- Easy 1/4 turn handle rotation
- Highly engineered resin construction
- Single hole installation
- Includes smart water-saving technology
- Single water input
- Chrome finish resist corrosion and tarnishing
- 1/2" male connection
- 1.69 GPM (6.4 lpm) maximum flow rate at 80 psi
- NTC 1644 compliance
- Working temperature: 41-160 °F (5 - 71.1 °C)

Click aqui

CODE	DESCRIPTION	PRESENTATION	UND. PER PACK
01-1700-11	Helix Pala one handle bathroom faucet	Box	24



TEDESCA

- Ceramic disc assures durability and long-lasting performance
- Easy 1/4 turn handle rotation
- Highly engineered resin construction
- Single hole installation
- Includes smart water-saving technology
- Single water input
- Chrome finish resist corrosion and tarnishing
- 1/2" male connection
- 1.69 GPM (6.4 lpm) maximum flow rate at 80 psi
- NTC 1644 compliance
- Working temperature: 41-160 °F (5 - 71.1 °C)

Click aqui

CODE	DESCRIPTION	PRESENTATION	UND. PER PACK
01-1800-11	Tedesca one handle bathroom faucet	Box	24



PRISTINA

- Ceramic disc assures durability and long-lasting performance
- Easy 1/4 turn handle rotation
- Premium metal construction
- Single hole installation
- Includes smart water-saving technology
- Single water input
- Chrome finish resist corrosion and tarnishing
- 1/2" male connection
- 1.27 GPM (5.2 lpm) maximum flow rate at 80 psi
- NTC 1644 compliance
- Working temperature: 41-160 °F (5 - 71.1 °C)

Click aqui

CODE	DESCRIPTION	PRESENTATION	UND. PER PACK
01-2815-211	Pristina brass one handle bathroom faucet	Box	24

BATHROOM ACCESSORIES - HOOKS



PORTOBELLO BRASS ROBE HOOK

- Premium metal construction
- Includes wall screws for wall installation
- Chrome finish resist corrosion and tarnishing
- Concealed installation
- NTC 5339 compliance

Click aqui

CODE	DESCRIPTION	PRESENTATION	UND. PER PACK
01-2559-11	Portobello brass bathroom hook	Box	12



CONTEMPRA ROBE HOOK

- Highly engineered resin construction
- Includes wall screws for wall installation
- Chrome finish resist corrosion and tarnishing
- Concealed wall installation
- NTC 5339 compliance

Click aqui

CODE	DESCRIPTION	PRESENTATION	UND. PER PACK
BL-2502-11	Contempra bathroom hook	Skin Pack	60

BATHROOM ACCESSORIES - TOWEL BAR



PORTOBELLO BRASS TOWEL BAR

- Premium metal construction
- Includes wall screws for wall installation
- Chrome finish resist corrosion and tarnishing
- Length: 22 5/8" (57.5 cm)
- Concealed wall installation
- NTC 5339 compliance

Click aquí

CODE	DESCRIPTION	PRESENTATION	UND. PER PACK
01-2555-11	Portobello brass towel bar	Box	36



PORTOBELLO BRASS TOWEL RING

- Premium metal construction
- Includes wall screws for wall installation
- Chrome finish resist corrosion and tarnishing
- Ring dimension: 9" X 4 9/16" (23 X 11.6 cm)
- Concealed wall installation
- NTC 5339 compliance

Click aquí

CODE	DESCRIPTION	PRESENTATION	UND. PER PACK
01-2558-11	Portobello brass towel ring	Box	12



CONTEMPRA TOWEL RING

- Highly engineered resin construction
- Includes wall screws for wall installation
- Chrome finish resist corrosion and tarnishing
- Ring dimension: 6 13/16" X 5 1/4" (17.3 X 13.3 cm)
- Concealed wall installation
- NTC 5339 compliance

Click aquí

CODE	DESCRIPTION	PRESENTATION	UND. PER PACK
BL-2504-11	Contempra towel ring	Blister cardboard	30



CONTEMPRA TOWEL BAR

- Highly engineered resin construction
- Includes wall screws for wall installation
- Chrome finish resist corrosion and tarnishing
- Length: 17 23/32" (45 cm)
- Concealed wall installation
- NTC 5339 compliance

Click aquí

CODE	DESCRIPTION	PRESENTATION	UND. PER PACK
BL-2507-11	Contempra towel bar	Blister cardboard	18

BATHROOM ACCESSORIES - TOOTHBRUSH HOLDER



PORTOBELLO BRASS TOOTHBRUSH HOLDER

- Premium metal construction
- Glass cup
- Includes wall screws for wall installation
- Chrome finish resist corrosion and tarnishing
- Concealed wall installation
- NTC 5339 compliance

Click aquí

CODE	DESCRIPTION	PRESENTATION	UND. PER PACK
01-2556-11	Portobello brass toothbrush holder	Box	12



CONTEMPRA TOOTHBRUSH HOLDER

- Highly engineered resin construction
- Acrylic cup
- Includes wall screws for wall installation
- Chrome finish resist corrosion and tarnishing
- Concealed wall installation
- NTC 5339 compliance

Click aquí

CODE	DESCRIPTION	PRESENTATION	UND. PER PACK
BL-2506-11	Contempra toothbrush holder	Blister cardboard	30

BATHROOM ACCESSORIES - PAPER HOLDER



PORTOBELLO BRASS PAPER HOLDER

- Premium metal construction
- Includes wall screws for wall installation
- Chrome finish resist corrosion and tarnishing
- Concealed wall installation
- NTC 5339 compliance

Click aqui

CODE	DESCRIPTION	PRESENTATION	UND. PER PACK
01-2557-11	Portobello brass paper holder	Box	12



CONTEMPRA PAPER HOLDER

- Highly engineered resin construction
- Includes wall screws for wall installation
- Chrome finish resist corrosion and tarnishing
- Concealed wall installation
- NTC 5339 compliance

Click aqui

CODE	DESCRIPTION	PRESENTATION	UND. PER PACK
BL-2503-11	Contempra paper holder	Skin Pack	28

BATHROOM ACCESSORIES - SOAP DISHES

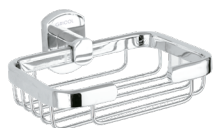


PORTOBELLO BRASS SOAP DISH

- Premium metal construction
- Glass soap holder
- Includes wall screws for wall installation
- Chrome finish resist corrosion and tarnishing
- Concealed wall installation
- NTC 5339 compliance

Click aqui

CODE	DESCRIPTION	PRESENTATION	UND. PER PACK
01-2553-11	Portobello brass-glass soap dish	Box	12



PORTOBELLO BRASS BASKET SOAP DISH

- Premium metal construction
- Includes wall screws for wall installation
- Chrome finish resist corrosion and tarnishing
- Concealed wall installation
- NTC 5339 compliance

Click aqui

CODE	DESCRIPTION	PRESENTATION	UND. PER PACK
01-2554-11	Portobello brass basket soap dish	Box	12



CONTEMPRA SOAP DISH

- Highly engineered resin construction
- Acrylic soap holder
- Includes wall screws for wall installation
- Chrome finish resist corrosion and tarnishing
- Concealed wall installation
- NTC 5339 compliance

Click aqui

CODE	DESCRIPTION	PRESENTATION	UND. PER PACK
BL-2505-11	Contempra soap dish	Blister cardboard	56

BATHROOM ACCESSORIES - SETS

THREE PIECES CONTEMPRA SET



Includes

BL-2502-11

Hook

BL-2506-11

Soap dish

BL-2503-11

Paper holder

Click aqui

CODE	DESCRIPTION	PRESENTATION	UND. PER PACK
BL-2508-11	3 pieces Contempra set	Blister cardboard	18

FOUR PIECES CONTEMPRA SET



Includes

BL-2502-11

Hook

BL-2506-11

Soap dish

BL-2503-11

Paper holder

BL-2504-11

Towel ring

Click aqui

CODE	DESCRIPTION	PRESENTATION	UND. PER PACK
BL-2509-11	4 pieces Contempra set	Blister cardboard	18

FIVE PIECES CONTEMPRA SET



Includes

BL-2502-11

Hook

BL-2507-11

Towel bar

BL-2505-11

Soap dish

BL-2506-11

Toothbrush holder

BL-2503-11

Paper holder

Click aqui

CODE	DESCRIPTION	PRESENTATION	UND. PER PACK
BL-2510-11	5 pieces Contempra set	Blister cardboard	12

SIX PIECES CONTEMPRA SET



Includes

BL-2502-11

Hook

BL-2504-11

Towel ring

BL-2505-11

Soap dish

BL-2507-11

Towel bar

BL-2503-11

Paper holder

BL-2506-11

Toothbrush holder

Click aqui

CODE	DESCRIPTION	PRESENTATION	UND. PER PACK
BL-2511-11	6 pieces Contempra set	Blister cardboard	12

BATHROOM SINKS



DALY II BATHROOM SINK

- Vitreous porcelain construction that prevents porosity and absorption
- Vessel desing
- Ideal for long single handle or wall faucet installation
- Dimension: 23/8" (6 cm) diameter x 5 5/16" (13,5 cm) height
- Countertop installation
- Includes: pop-up drain without overflow ref: 01-2900-11S, P chrome sink trap ref: 01-9997-11S
- Bathroom table must be cut considering the internal dimensions of the drain
- NTC 920 compliance

Click aquí

CODE	DESCRIPTION	PRESENTATION	UND. PER PACK
01-2053-15	Daly II vessel sink with accessories	Box	1



GEB BATHROOM SINK

- Vitreous porcelain construction that prevents porosity and absorption
- Vessel desing
- Ideal for short single handle installation
- Dimensions: 21 5/8" (55 cm) long X 16 1/2" (42 cm) high
- Includes: pop-up drain without overflow, ref: 01-2904-11, Bottle sink trap ref: 01-1940-04
- With overflow drain that prevents outpouring
- Countertop installation
- Bathroom table must be cut considering the internal dimensions of the drain
- NTC 920 compliance

Click aquí

CODE	DESCRIPTION	PRESENTATION	UND. PER PACK
01-4018-15	Geb vessel sink with accessories	Box	1



HESTIA BATHROOM SINK

- Vitreous porcelain construction that prevents porosity and absorption
- Vessel desing
- Ideal for long single handle or wall faucet installation
- Dimensions: 16 1/2" (42 cm) wide X 4 5/16" (11 cm) high
- Includes: pop-up drain without overflow ref: 01-2900-11S, P plastic sink trap ref: 01-9997-11S
- Countertop installation
- Bathroom table must be cut considering the internal dimensions of the drain
- NTC 920 compliance

Click aquí

CODE	DESCRIPTION	PRESENTATION	UND. PER PACK
01-4062-15	Hestia vessel sink with accessories	Box	1



KHANOS BATHROOM SINK

- Vitreous porcelain construction that prevents porosity and absorption
- Vessel desing
- Ideal for long single handle or wall faucet installation
- Dimensions: 17" (43 cm) long X 17" (43 cm) wide X 5 5/16" (13.5 cm) high
- Includes: pop-up drain without overflow ref: 01-2900-11S, Bottle sink trap ref: 01-1940-04S
- Countertop installation
- Bathroom table must be cut considering the internal dimensions of the drain
- NTC 920 compliance

Click aquí

CODE	DESCRIPTION	PRESENTATION	UND. PER PACK
01-4072-15	Khanos vessel sink with accessories	Box	1

BATHROOM SINKS

NEB BATHROOM SINK



Click aqui

- Vitreous porcelain construction that prevents porosity and absorption
- Vessel desing
- Ideal for long single handle or wall faucet installation
- Dimension: 58 cm of length x 33 1/2" (9 cm) width x 13 cm height

- Includes: pop-up drain without overflow, ref: 01-2900-11S, Bottle sink trap ref: 01-1940-04S
- Countertop installation
- Bathroom table must be cut considering the internal dimensions of the drain
- NTC 920 compliance

CODE	DESCRIPTION	PRESENTATION	UND. PER PACK
01-4073-15	Neb vessel sink with accessories	Box	1

OVAL II BATHROOM SINK



Click aqui

- Vitreous porcelain construction that prevents porosity and absorption
- Undermount desing
- Ideal for simple mixer faucets of 4" or 8"
- With faucet holes
- Dimensions: 19 5/16" (49 cm) long X 17" (43 cm) wide X 7 1/2" (19 cm) high

- Includes: Drain with overflow ref: 01-1936-11S, Bottle sink trap ref: 01-1940-04S
- With overflow drain that prevents outpouring
- Anti-fungal silicone installation
- Bathroom table must be cut considering the internal dimensions of the drain
- NTC 920 compliance

CODE	DESCRIPTION	PRESENTATION	UND. PER PACK
01-4079-15	Oval II vessel sink with accessories	Box	1

CALIMA TWO-PIECE ENLONGATE 3.8L WHITE TOILET



Click aqui

- Vitreous porcelain construction that prevents porosity and absorption
- Two-pieces desing
- One flushing with push button
- High performance flushing saving water consumption
- Dimensions: 29" (73,8 cm) long X 14.5" (36,8 cm) wide x 31.5" (80 cm) high
- Includes: elongated soft-close toilet seat, water supply stop valve ref: 01-1918-15 and connector ref: 01-1921-00

- Toilet design incorporating jet technology optimizes flushing
- Closed ring makes easy to clean inside of bowl
- Installation must allow 12" (30,5 cm) from wall to the outflow spout
- Consumption: 1 GPF (3,8 lpd)
- NTC 920 compliance

CODE	DESCRIPTION	PRESENTATION	UND. PER PACK
01-2035-15	Calima two-piece elongated 3.8L one flushing white toilet with accessories	Box	1

FIRENZE II ONE-PIECE ENLONGATE 6.4L WHITE TOILET



Click aqui

- Vitreous porcelain construction that prevents porosity and absorption
- One-piece desing with hidden sink and easy to clean bowl
- Double flushing with push button
- High performance flushing saving water consumption
- Dimension: 26 3/4" (68 cm) long X 13 3/4" (35 cm) wide x 26 3/4" (68 cm) high
- Includes: elongated soft-close toilet seat, water supply stop valve ref: 01-1918-15 and connector ref: 01-1921-00
- Toilet design incorporating jet technology optimizes flushing

- Closed ring makes easy to clean inside of the bowl
- Installation must allow 11 5/8" (29,5 cm) from wall to the outflow spout
- NTC 920 compliance

CODE	DESCRIPTION	PRESENTATION	UND. PER PACK
01-2047-15	Firenze II one-piece elongated 2 gallon (6.4L) dual flush white toilet with accessories	Box	1

VIVALDI ONE-PIECE ENLONGATE DOUBL FLUSHING TOILET



Click aqui

- Vitreous porcelain construction that prevents porosity and absorption
- One-piece desing
- Double flushing with push button
- High performance flushing saving water consumption
- Dimensions: 26 3/4" (68 cm) long x 16" (40,5 cm) wide x 23 5/8" (60 cm) high
- Includes: Elongated soft-close toilet seat, water supply stop valve ref: 01-1918-15 and connector ref: 01-1921-00

- Toilet design incorporating jet technology optimizes flushing
- Closed ring makes easy to clean inside of the bowl
- Installation must allow 12" (30,5 cm) from wall to the outflow spout
- Consumption: : 1.6 GPF (6 Lpd) -solids- and 1.05 GPF (4 Lpd) -liquids-
- NTC 920 compliance

CODE	DESCRIPTION	PRESENTATION	UND. PER PACK
01-4071-315	Vivaldi one-piece elongated dual flush white toilet with accessories	Box	1



GRICOL

SINCE 1962



KITCHEN

WWW.GRICOL.COM

ONE LEVER HANDLE KITCHEN FAUCETS



Click aqui

VIVALDI

- Sealing system: cartridge with ceramic discs for maximum durability with optimum performance
- Single handle temperature control
- Metal body and handles
- 28 cm height
- Single hole installation
- 360° rotating arm
- Built-in aerator for low water consumption
- Wear and corrosion resistant chrome plating
- Connection: ½" female thread NPSM
- Compliance with standards: NTC 1644
- Working temperature: 5°C to 71°C
- Maximum static working pressure: 860 kPa (125 psi)
- Includes connectors.

CODE	DESCRIPTION	PRESENTATION	UND. PER PACK
01-2115-11	Vivaldi single lever dishwasher mixer	Box	12



Click aqui

TIFFANY

- Sealing system: cartridge with ceramic discs for maximum durability with optimum performance
- Single handle temperature control
- Metal body and handles
- 28 cm height
- Single hole installation
- 360° rotating arm
- Built-in aerator for low water consumption
- Wear and corrosion resistant chrome plating
- Connection: ½" female thread NPSM
- Compliance with standards: NTC 1644
- Working temperature: 5°C to 71°C
- Maximum static working pressure: 860 kPa (125 psi)
- Includes connectors.

CODE	DESCRIPTION	PRESENTATION	UND. PER PACK
01-2209-11	Single lever dishwasher mixer Tiffany	Box	12



Click aqui

SION

- Sealing system: cartridge with ceramic discs for maximum durability with optimum performance
- Single handle temperature control
- Highly engineered resin body, metal arm and handles
- 39 cm height
- Single hole installation
- 360° rotating arm
- Built-in aerator for low water consumption
- Wear and corrosion resistant chrome plating
- Connection: ½" female thread NPSM
- Compliance with standards: NTC 1644
- Working temperature: 5°C to 71°C
- Maximum static working pressure: 860 kPa (125 psi)
- Includes connectors

CODE	DESCRIPTION	PRESENTATION	UND. PER PACK
01-2615-11	Sion single lever dishwasher mixer	Box	12



Click aqui

MAIRA

- Pull-out single lever mixer design with pull-out head
- Closure system: cartridge with ceramic discs for maximum durability with optimum performance
- Single handle temperature control
- Metal body and handle
- 38.4 cm height
- Single hole installation
- 360° swivel arm Chrome plated wear and corrosion resistant
- Connection: ½" female thread NPSM
- Standards compliance: NTC 1644
- Working temperature: 5°C to 71°C
- Maximum static working pressure: 860 kPa (125 psi)
- Includes connectors

CODE	DESCRIPTION	PRESENTATION	UND. PER PACK
01-3808-11	Single lever dishwasher mixer Maira	Box	5



Click aqui

RED TIRSO

- Pull-out single lever mixer design with pull-out head
- Closure system: cartridge with ceramic discs for maximum durability with optimum
- maximum durability with optimum performance
- Single handle temperature control
- Metal body and handle
- Silicone hose
- 34.3 cm height
- Single hole installation
- 360° swivel arm
- Built-in aerator for low water consumption
- Wear and corrosion resistant chrome plating
- Connection: ½" NPSM female thread
- Compliance with standards: NTC 1644
- Working temperature: 5°C to 71°C
- Maximum static working pressure: 860 kPa (125 psi)
- Includes connectors

CODE	DESCRIPTION	PRESENTATION	UND. PER PACK
01-3908-01	Single lever dishwasher mixer Tirso red	Box	5

ONE LEVER HANDLE KITCHEN FAUCETS



Click aqui

BLUE TIRSO

- Pull-out single lever mixer design with pull-out head
- Closure system: cartridge with ceramic discs for maximum durability with optimum performance
- Single handle temperature control
- Metal body and handle
- Silicone hose
- 34.3 cm height
- Single hole installation
- 360° swivel arm
- Built-in aerator for low water consumption
- Wear and corrosion resistant chrome plating
- Connection: 1/2" NPSM female thread
- Compliance with standards: NTC 1644
- Working temperature: 5°C to 71°C
- Maximum static working pressure: 860 kPa (125 psi)
- Includes connectors.

CODE	DESCRIPTION	PRESENTATION	UND. PER PACK
01-3908-02	Dishwasher mixer Tirso blue	Box	5



Click aqui

BLACK TIRSO

- Pull-out single lever mixer design with pull-out head
- Closure system: cartridge with ceramic discs for maximum durability with optimum performance
- Single handle temperature control
- Metal body and handle
- Silicone hose
- 34.3 cm height
- Single hole installation
- 360° swivel arm
- Built-in aerator for low water consumption
- Wear and corrosion resistant chrome plating
- Connection: 1/2" NPSM female thread
- Compliance with standards: NTC 1644
- Working temperature: 5°C to 71°C
- Maximum static working pressure: 860 kPa (125 psi)
- Includes connectors

CODE	DESCRIPTION	PRESENTATION	UND. PER PACK
01-3908-07	Dishwasher mixer Tirso Black	Box	5



Click aqui

WHITE TIRSO

- Pull-out single lever mixer design with pull-out head
- Closure system: cartridge with ceramic discs for maximum durability with optimum performance
- Single handle temperature control
- Metal body and handle
- Silicone hose
- 34.3 cm height
- Single hole installation
- 360° swivel arm
- Built-in aerator for low water consumption
- Wear and corrosion resistant chrome plating
- Connection: 1/2" NPSM female thread
- Compliance with standards: NTC 1644
- Working temperature: 5°C to 71°C
- Maximum static working pressure: 860 kPa (125 psi)
- Includes connectors

CODE	DESCRIPTION	PRESENTATION	UND. PER PACK
01-3908-15	Dishwasher mixer Tirso White	Box	5



Click aqui

ORANGE TIRSO

- Pull-out single lever mixer design with pull-out head
- Closure system: cartridge with ceramic discs for maximum durability with optimum performance
- Single handle temperature control
- Metal body and handle
- Silicone hose
- 34.3 cm height
- Single hole installation
- 360° swivel arm
- Built-in aerator for low water consumption
- Wear and corrosion resistant chrome plating
- Connection: 1/2" NPSM female thread
- Compliance with standards: NTC 1644
- Working temperature: 5°C to 71°C
- Maximum static working pressure: 860 kPa (125 psi)
- Includes connectors

CODE	DESCRIPTION	PRESENTATION	UND. PER PACK
01-3908-17	Dishwasher mixer Tirso Orange	Box	5



Click aqui

PURPLE TIRSO

- Pull-out single lever mixer design with pull-out head
- Closure system: cartridge with ceramic discs for maximum durability with optimum performance
- Single handle temperature control
- Metal body and handle
- Silicone hose
- 34.3 cm height
- Single hole installation
- 360° swivel arm
- Built-in aerator for low water consumption
- Wear and corrosion resistant chrome plating
- Connection: 1/2" NPSM female thread
- Compliance with standards: NTC 1644
- Working temperature: 5°C to 71°C
- Maximum static working pressure: 860 kPa (125 psi)
- Includes connectors

CODE	DESCRIPTION	PRESENTATION	UND. PER PACK
01-3908-18	Dishwasher mixer Tirso Purple	Box	5

ONE LEVER HANDLE KITCHEN FAUCETS



Click aqui

GARDA

- Pull-out single lever mixer design with pull-out head
- Closure system: cartridge with ceramic discs for maximum durability with optimum
- maximum durability with optimum performance
- Single handle temperature control
- Independent temperature setting allows you to always turn on
- water at a set temperature
- Metal body and handle
- 33 cm height
- Single hole installation
- 360° rotating arm
- Built-in aerator for low water consumption
- Wear and corrosion resistant chrome plating
- Connection: 1/2" NPSM female thread
- Compliance with standards: NTC 1644
- Working temperature: 5°C to 71°C
- Maximum static working pressure: 860 kPa (125 psi)
- Includes connectors

CODE	DESCRIPTION	PRESENTATION	UND. PER PACK
01-4107-11	Dishwasher mixer Garda	Box	5

8" TWO HANDLE KITCHEN FAUCETS



Click aqui

CALIMA

- Ceramic pad locking system for maximum durability with optimal durability with optimum performance
- Easy 1/4 turn locking
- Metal body, arm and handles
- 360° rotating arm
- Two hole installation
- Built-in aerator for low water consumption
- Chrome-plated for wear and corrosion resistance - Chrome-plated for wear and corrosion resistance
- Connection: 1/2" NPSM male thread - Chrome plated for low water consumption - Chrome plated for low water consumption
- Standards compliance: NTC 1644
- Working temperature: 5°C to 71°C
- Maximum static working pressure: 860 kPa (125 psi)
- Connectors not included

CODE	DESCRIPTION	PRESENTATION	UND. PER PACK
01-0801-11	Dishwasher mixer 8" Calima	Box	12



Click aqui

CALIMA BRIDGE FAUCET

- Ceramic pad locking system for maximum durability with optimal durability with optimum performance
- Easy 1/4 turn locking
- Metal body, arm and handles
- 360° rotating arm
- Two hole installation
- Built-in aerator for low water consumption
- Chrome-plated for wear and corrosion resistance - Chrome-plated for wear and corrosion resistance
- Connection: 1/2" NPSM male thread - Chrome plated for low water consumption - Chrome plated for low water consumption
- Standards compliance: NTC 1644
- Working temperature: 5°C to 71°C
- Maximum static working pressure: 860 kPa (125 psi)

CODE	DESCRIPTION	PRESENTATION	UND. PER PACK
01-0841-11	Table mixer 8" exposed body Calima	Box	12



Click aqui

HELVETIA

- Ceramic pad locking system for maximum durability with optimal durability with optimum performance
- Easy 1/4 turn locking
- Metal body, arm and handles
- 360° rotating arm
- Two hole installation
- Built-in aerator for low water consumption
- Chrome-plated for wear and corrosion resistance - Chrome-plated for wear and corrosion resistance
- Connection: 1/2" NPSM male thread - Chrome plated for low water consumption - Chrome plated for low water consumption
- Standards compliance: NTC 1644
- Working temperature: 5°C to 71°C
- Maximum static working pressure: 860 kPa (125 psi)

CODE	DESCRIPTION	PRESENTATION	UND. PER PACK
01-0928-11	Dishwasher mixer 8" Helvetia	Box	12



Click aqui

KRISTHAL

- Ceramic pad locking system for maximum durability with optimal durability with optimum performance
- Easy 1/4 turn locking
- Highly engineered resin body and acrylic resin handles
- 360° swivel arm
- Two hole installation
- Built-in aerator for low water consumption
- Chrome-plated for wear and corrosion resistance - Chrome-plated for wear and corrosion resistance
- Connection: 1/2" NPSM male threads - Chrome-plated for low water consumption
- Standards compliance: NTC 1644
- Working temperature: 5°C to 71°C
- Maximum static working pressure: 860 kPa (125 psi)

CODE	DESCRIPTION	PRESENTATION	UND. PER PACK
01-1138-00	Dishwasher mixer 8" Kristhal	Bag	12

8" TWO HANDLE KITCHEN FAUCETS


[Click aquí](#)

ATLÁNTICO

- Ceramic pad locking system for maximum durability with optimal durability with optimum performance
- Easy 1/4 turn locking
- Highly engineered resin body and handles - Highly engineered resin body and handles
- 360° swivel arm
- Two hole installation
- Built-in aerator for low water consumption
- Chrome-plated for wear and corrosion resistance - Chrome-plated for wear and corrosion resistance
- Connection: 1/2" NPSM male threads - Chrome-plated for low water consumption
- Standards compliance: NTC 1644
- Working temperature: 5°C to 71°C
- Maximum static working pressure: 860 kPa (125 psi)

CODE	DESCRIPTION	PRESENTATION	UND. PER PACK
01-1338-11	Dishwasher mixer 8" Atlántico	Box	12


[Click aquí](#)

TOSCANA

- Ceramic pad locking system for maximum durability with optimal durability with optimum performance
- Easy 1/4 turn locking
- Highly engineered resin body and handles - Highly engineered resin body and handles
- 360° swivel arm
- Two hole installation
- Built-in aerator for low water consumption
- Chrome-plated for wear and corrosion resistance - Chrome-plated for wear and corrosion resistance
- Connection: 1/2" NPSM male threads - Chrome-plated for low water consumption
- 360° rotatable head to control the water outlet angle - 360° rotatable head to control the water outlet angle water
- Standards compliance: NTC 1644
- Working temperature: 5°C to 71°C
- Maximum static working pressure: 860 kPa (125 psi)

CODE	DESCRIPTION	PRESENTATION	UND. PER PACK
01-1466-11	Dishwasher mixer 8" Toscana	Box	12


[Click aquí](#)

PIANA

- Ceramic pad locking system for maximum durability with optimal durability with optimum performance
- Easy 1/4 turn locking
- Highly engineered resin body and handles - Highly engineered resin body and handles
- 360° swivel arm
- Two hole installation
- Built-in aerator for low water consumption
- Chrome-plated for wear and corrosion resistance - Chrome-plated for wear and corrosion resistance
- Connection: 1/2" NPSM male threads - Chrome-plated for low water consumption
- Standards compliance: NTC 1644
- Working temperature: 5°C to 71°C
- Maximum static working pressure: 860 kPa (125 psi)

CODE	DESCRIPTION	PRESENTATION	UND. PER PACK
01-1528-11	Dishwasher mixer 8" Piana	Box	12


[Click aquí](#)

HELIX PALA

- Ceramic pad locking system for maximum durability with optimal durability with optimum performance
- Easy 1/4 turn locking
- Highly engineered resin body and handles - Highly engineered resin body and handles
- 360° swivel arm
- Two hole installation
- Built-in aerator for low water consumption
- Chrome-plated for wear and corrosion resistance - Chrome-plated for wear and corrosion resistance
- Connection: 1/2" NPSM male threads - Chrome-plated for low water consumption
- Standards compliance: NTC 1644
- Working temperature: 5°C to 71°C
- Maximum static working pressure: 860 kPa (125 psi)

CODE	DESCRIPTION	PRESENTATION	UND. PER PACK
01-1728-11	Dishwasher mixer 8" Helix Pala	Box	12


[Click aquí](#)

TEDESCA

- Ceramic pad locking system for maximum durability with optimal durability with optimum performance
- Easy 1/4 turn locking
- Highly engineered resin body and handles - Highly engineered resin body and handles
- 360° swivel arm
- Two hole installation
- Built-in aerator for low water consumption
- Chrome-plated for wear and corrosion resistance - Chrome-plated for wear and corrosion resistance
- Connection: 1/2" NPSM male threads - Chrome-plated for low water consumption
- Standards compliance: NTC 1644
- Working temperature: 5°C to 71°C
- Maximum static working pressure: 860 kPa (125 psi)

CODE	DESCRIPTION	PRESENTATION	UND. PER PACK
01-1828-11	Dishwasher mixer 8" Tedesca	Box	12

8" TWO HANDLE KITCHEN FAUCETS



Click aquí

PRISTINA

- Ceramic pad sealing system for maximum durability with optimal durability with optimum performance
- Easy 1/4 turn locking
- Highly engineered resin body and metal handles
- 360° swivel arm
- Two-hole installation
- Built-in aerator for low water consumption

- Wear and corrosion resistant chrome plating
- Connection: 1/2" male thread NPSM
- Standards compliance: NTC 1644
- Working temperature: 5°C to 71°C
- Maximum static working pressure: 860 kPa (125 psi)

CODE	DESCRIPTION	PRESENTATION	UND. PER PACK
01-2828-11	Dishwasher mixer 8" Pristina	Box	12



Click aquí

PRISTINA - EXPOSED BODY

- Ceramic pad locking system for maximum durability with optimal durability and optimum performance
- Easy 1/4 turn locking
- Metal body and handles
- 360° rotating arm
- Two hole installation
- Built-in aerator for low water consumption
- Chrome-plated for wear and corrosion resistance - Chrome-

- plated for wear and corrosion resistance
- Connection: 1/2" NPT male thread - Built-in aerator for low water consumption - Chrome plated for low water consumption
- Standards compliance: NTC 1644
- Working temperature: 5°C to 71°C
- Maximum static working pressure: 860 kPa (125 psi)

CODE	DESCRIPTION	PRESENTATION	UND. PER PACK
01-2841-11	Table mixer 8" exposed body Pristina	Box	12

8" TWO HANDLE WALL-MOUNT KITCHEN FAUCETS



Click aquí

CALIMA

- Ceramic pad locking system for maximum durability with optimal durability with optimum performance
- Easy 1/4 turn locking
- Metal body, arm and handles
- 360° rotating arm
- Two-hole installation
- Built-in aerator for low water consumption

- Chrome-plated for wear and corrosion resistance - Chrome-plated for wear and corrosion resistance
- Connection: 1/2" NPT male thread - Built-in aerator for low water consumption
- Standards compliance: NTC 1644
- Working temperature: 5°C to 71°C
- Maximum static working pressure: 860 kPa (125 psi)

CODE	DESCRIPTION	PRESENTATION	UND. PER PACK
01-0832-11	Wall mounted mixer 8" exposed body Calima	Box	12



Click aquí

PRISTINA

- Ceramic pad locking system for maximum durability with optimal durability and optimum performance
- Easy 1/4 turn locking
- Metal body and handles
- 360° rotating arm
- Two-hole installation
- Built-in aerator for low water consumption

- Chrome-plated for wear and corrosion resistance - Chrome-plated for wear and corrosion resistance
- Connection: 1/2" NPT male thread - Built-in aerator for low water consumption
- Standards compliance: NTC 1644
- Working temperature: 5°C to 71°C
- Maximum static working pressure: 860 kPa (125 psi)

CODE	DESCRIPTION	PRESENTATION	UND. PER PACK
01-2832-11	Wall mounted mixer 8" exposed body Pristina	Box	12

ONE HANDLE KITCHEN FAUCETS



Click aquí

CALIMA

- Ceramic pad locking system for maximum durability with optimal durability and optimum performance
- Easy 1/4 turn locking
- Metal body, arm and handles
- Single hole installation
- 360° rotating arm
- Built-in aerator for low water consumption
- Single water inlet

- Chrome-plated for wear and corrosion resistance - Built-in aerator for low water consumption
- Connection: 1/2" male thread NPSM
- Standards compliance: NTC 1644
- Working temperature: 5°C to 71°C
- Maximum static working pressure: 860 kPa (125 psi)

CODE	DESCRIPTION	PRESENTATION	UND. PER PACK
01-0837-11	Calima mobile table faucet	Box	12

ONE HANDLE KITCHEN FAUCETS


[Click aqui](#)

HELVETIA

- Ceramic pad locking system for maximum durability with optimal durability and optimum performance
- Easy 1/4 turn locking
- Highly engineered resin body and handles - Highly engineered resin body and handles
- Single hole installation
- 360° rotating arm
- Built-in aerator for low water consumption
- Single water inlet
- Chrome-plated for wear and corrosion resistance - Built-in aerator for low water consumption
- Connection: 1/2" male thread NPSM
- Standards compliance: NTC 1644
- Working temperature: 5°C to 71°C
- Maximum static working pressure: 860 kPa (125 psi)

CODE	DESCRIPTION	PRESENTATION	UND. PER PACK
01-0943-11	Helvetia mobile table faucet	Box	12


[Click aqui](#)

KRISTHAL

- Ceramic pad locking system for maximum durability with optimal durability and optimum performance
- Easy 1/4 turn locking
- Highly engineered resin body and acrylic resin handles
- Single hole installation
- 360° rotating arm
- Built-in aerator for low water consumption
- Single water inlet
- Chrome-plated for wear and corrosion resistance - Built-in aerator for low water consumption
- Connection: 1/2" male thread NPSM
- Standards compliance: NTC 1644
- Working temperature: 5°C to 71°C
- Maximum static working pressure: 860 kPa (125 psi)

CODE	DESCRIPTION	PRESENTATION	UND. PER PACK
01-1174-00	Kristhal one handle kitchen faucet	Bag	24


[Click aqui](#)

ATLÁNTICO

- Ceramic pad locking system for maximum durability with optimal durability and optimum performance
- Easy 1/4 turn locking
- Highly engineered resin body and handles - Highly engineered resin body and handles
- Single hole installation
- 360° rotating arm
- Built-in aerator for low water consumption
- Single water inlet
- Chrome-plated for wear and corrosion resistance - Built-in aerator for low water consumption
- Connection: 1/2" male thread NPSM
- Standards compliance: NTC 1644
- Working temperature: 5°C to 71°C
- Maximum static working pressure: 860 kPa (125 psi)

CODE	DESCRIPTION	PRESENTATION	UND. PER PACK
01-1360-11	Atlantico mobile table faucet	Box	24


[Click aqui](#)

TOSCANA

- Ceramic pad locking system for maximum durability with optimal durability and optimum performance
- Easy 1/4 turn locking
- Highly engineered resin body and handles - Highly engineered resin body and handles
- Single hole installation
- 360° rotating arm
- Built-in aerator for low water consumption
- Single water inlet
- 360° rotatable water outlet to control the angle of water outlet
- Wear and corrosion resistant chrome plating - Corrosion resistant chrome plating
- Connection: male thread 1/2" NPSM
- Standards compliance: NTC 1644
- Working temperature: 5°C to 71°C
- Maximum static working pressure: 860 kPa (125 psi)

CODE	DESCRIPTION	PRESENTATION	UND. PER PACK
01-1450-11	Toscana mobile table faucet	Box	12


[Click aqui](#)

PIANA

- Ceramic pad locking system for maximum durability with optimal durability and optimum performance
- Easy 1/4 turn locking
- Highly engineered resin body and handles - Highly engineered resin body and handles
- Single hole installation
- 360° rotating arm
- Built-in aerator for low water consumption
- Single water inlet
- Chrome-plated for wear and corrosion resistance - Built-in aerator for low water consumption
- Connection: 1/2" male thread NPSM
- Standards compliance: NTC 1644
- Working temperature: 5°C to 71°C
- Maximum static working pressure: 860 kPa (125 psi)

CODE	DESCRIPTION	PRESENTATION	UND. PER PACK
01-1550-11	Piana mobile table faucet	Box	24

ONE HANDLE KITCHEN FAUCETS



Click aquí

HELIX PALA

- Ceramic pad locking system for maximum durability with optimal durability and optimum performance
- Easy 1/4 turn locking
- Highly engineered resin body and handles - Highly engineered resin body and handles
- Single hole installation
- 360° rotating arm
- Built-in aerator for low water consumption
- Single water inlet
- Chrome-plated for wear and corrosion resistance - Built-in aerator for low water consumption
- Connection: 1/2" male thread NPSM
- Standards compliance: NTC 1644
- Working temperature: 5°C to 71°C
- Maximum static working pressure: 860 kPa (125 psi)

CODE	DESCRIPTION	PRESENTATION	UND. PER PACK
01-1750-11	Helix Pala mobile table faucet	Box	24



Click aquí

TEDESCA

- Ceramic pad locking system for maximum durability with optimal durability and optimum performance
- Easy 1/4 turn locking
- Highly engineered resin body and handles - Highly engineered resin body and handles
- Single hole installation
- 360° rotating arm
- Built-in aerator for low water consumption
- Single water inlet
- Chrome-plated for wear and corrosion resistance - Built-in aerator for low water consumption
- Connection: 1/2" male thread NPSM
- Standards compliance: NTC 1644
- Working temperature: 5°C to 71°C
- Maximum static working pressure: 860 kPa (125 psi)

CODE	DESCRIPTION	PRESENTATION	UND. PER PACK
01-1850-11	Pristina mobile table faucet	Box	12



Click aquí

PRISTINA

- Ceramic pad locking system for maximum durability with optimal durability and optimum performance
- Easy 1/4 turn locking
- Metal body and handles
- Single hole installation
- 360° rotating arm
- Built-in aerator for low water consumption
- Single water inlet
- Chrome-plated for wear and corrosion resistance - Built-in aerator for low water consumption
- Connection: 1/2" male thread NPSM
- Standards compliance: NTC 1644
- Working temperature: 5°C to 71°C
- Maximum static working pressure: 860 kPa (125 psi)

CODE	DESCRIPTION	PRESENTATION	UND. PER PACK
01-2837-11	Pristina mobile table faucet	Box	12

ONE HANDLE WALL-MOUNT KITCHEN FAUCETS



Click aquí

CALIMA

- Ceramic pad locking system for maximum durability with optimal durability and optimum performance
- Easy 1/4 turn locking
- Metal body, arm and handles
- Single hole installation
- 360° rotating arm
- Built-in aerator for low water consumption
- Single water inlet
- Chrome-plated for wear and corrosion resistance - Built-in aerator for low water consumption
- Connection: 1/2" NPT female thread - Single water inlet
- Standards compliance: NTC 1644
- Working temperature: 5°C to 71°C
- Maximum static working pressure: 860 kPa (125 psi)

CODE	DESCRIPTION	PRESENTATION	UND. PER PACK
01-0834-11	C Calima movable wall faucet	Box	12



Click aquí

CALIMA

- Ceramic pad locking system for maximum durability with optimal durability and optimum performance
- Easy 1/4 turn locking
- Metal body, arm and handles
- Single hole installation
- 360° rotating arm
- Built-in aerator for low water consumption
- Single water inlet
- Chrome-plated for wear and corrosion resistance - Built-in aerator for low water consumption
- Connection: 1/2" NPT female thread - Single water inlet
- Standards compliance: NTC 1644
- Working temperature: 5°C to 71°C
- Maximum static working pressure: 860 kPa (125 psi)

CODE	DESCRIPTION	PRESENTATION	UND. PER PACK
01-0835-11	S Calima mobile wall faucet	Box	24

ONE HANDLE WALL-MOUNT KITCHEN FAUCET



Click aqui 

HELVETIA

- Ceramic pad locking system for maximum durability with optimal durability and optimum performance
- Easy 1/4 turn locking
- Highly engineered resin body and handles - Highly engineered resin body and handles
- Single hole installation
- 360° rotating arm
- Built-in aerator for low water consumption
- Single water inlet
- Chrome-plated for wear and corrosion resistance - Built-in aerator for low water consumption
- Connection: 1/2" NPT female thread - Single water inlet
- Standards compliance: NTC 1644
- Working temperature: 5°C to 71°C
- Maximum static working pressure: 860 kPa (125 psi)

CODE	DESCRIPTION	PRESENTATION	UND. PER PACK
01-0944-11	C Helvetia mobile wall faucet	Box	12



Click aqui 

HELVETIA

- Ceramic pad locking system for maximum durability with optimal durability and optimum performance
- Easy 1/4 turn locking
- Highly engineered resin body and handles - Highly engineered resin body and handles
- Single hole installation
- 360° rotating arm
- Built-in aerator for low water consumption
- Single water inlet
- Chrome-plated for wear and corrosion resistance - Built-in aerator for low water consumption
- Connection: 1/2" NPT female thread - Single water inlet
- Standards compliance: NTC 1644
- Working temperature: 5°C to 71°C
- Maximum static working pressure: 860 kPa (125 psi)

CODE	DESCRIPTION	PRESENTATION	UND. PER PACK
01-0971-11	S Helvetia mobile wall faucet	Box	24



Click aqui 

ATLÁNTICO

- Ceramic pad locking system for maximum durability with optimal durability and optimum performance
- Easy 1/4 turn locking
- Highly engineered resin body and handles - Highly engineered resin body and handles
- Single hole installation
- 360° rotating arm
- Built-in aerator for low water consumption
- Single water inlet
- Chrome-plated for wear and corrosion resistance - Built-in aerator for low water consumption
- Connection: 1/2" NPT female thread - Single water inlet
- Standards compliance: NTC 1644
- Working temperature: 5°C to 71°C
- Maximum static working pressure: 860 kPa (125 psi)

CODE	DESCRIPTION	PRESENTATION	UND. PER PACK
01-1353-11	C Atlántico mobile wall faucet	Box	24



Click aqui 

TOSCANA

- Ceramic pad locking system for maximum durability with optimal durability and optimum performance
- Easy 1/4 turn locking
- Highly engineered resin body and handles
- Single hole installation
- 360° swivel arm
- Built-in aerator for low water consumption
- Single water inlet
- 360° rotatable water outlet to control the angle of water outlet
- Wear and corrosion resistant chrome plating
- Connection: 1/2" NPT female thread
- Compliance with standards: NTC 1644
- Working temperature: 5°C to 71°C
- Maximum static working pressure: 860 kPa (125 psi)

CODE	DESCRIPTION	PRESENTATION	UND. PER PACK
01-1458-11	S Toscana mobile wall faucet	Box	24



Click aqui 

PIANA

- Ceramic pad locking system for maximum durability with optimal durability and optimum performance
- Easy 1/4 turn locking
- Highly engineered resin body and handles - Highly engineered resin body and handles
- Single hole installation
- 360° rotating arm
- Built-in aerator for low water consumption
- Single water inlet
- Chrome-plated for wear and corrosion resistance - Built-in aerator for low water consumption
- Connection: 1/2" NPT female thread - Single water inlet
- Standards compliance: NTC 1644
- Working temperature: 5°C to 71°C
- Maximum static working pressure: 860 kPa (125 psi)

CODE	DESCRIPTION	PRESENTATION	UND. PER PACK
01-1553-11	C Piana mobile wall faucet	Box	24

ONE HANDLE WALL-MOUNT KITCHEN FAUCETS



Click aquí

PIANA

- Ceramic pad locking system for maximum durability with optimal durability and optimum performance
- Easy 1/4 turn locking
- Highly engineered resin body and handles - Highly engineered resin body and handles
- Single hole installation
- 360° rotating arm
- Built-in aerator for low water consumption
- Single water inlet
- Chrome-plated for wear and corrosion resistance - Built-in aerator for low water consumption
- Connection: 1/2" NPT female thread - Single water inlet
- Standards compliance: NTC 1644
- Working temperature: 5°C to 71°C
- Maximum static working pressure: 860 kPa (125 psi)

CODE	DESCRIPTION	PRESENTATION	UND. PER PACK
01-1558-11	S Piana mobile wall faucet	Box	24



Click aquí

HELIX PALA

- Ceramic pad locking system for maximum durability with optimal durability and optimum performance
- Easy 1/4 turn locking
- Highly engineered resin body and handles - Highly engineered resin body and handles
- Single hole installation
- 360° rotating arm
- Built-in aerator for low water consumption
- Single water inlet
- Chrome-plated for wear and corrosion resistance - Built-in aerator for low water consumption
- Connection: 1/2" NPT female thread - Single water inlet
- Standards compliance: NTC 1644
- Working temperature: 5°C to 71°C
- Maximum static working pressure: 860 kPa (125 psi)

CODE	DESCRIPTION	PRESENTATION	UND. PER PACK
01-1753-11	C Helix Pala mobile wall faucet	Box	24



Click aquí

HELIX PALA

- Ceramic pad locking system for maximum durability with optimal durability and optimum performance
- Easy 1/4 turn locking
- Highly engineered resin body and handles - Highly engineered resin body and handles
- Single hole installation
- 360° rotating arm
- Built-in aerator for low water consumption
- Single water inlet
- Chrome-plated for wear and corrosion resistance - Built-in aerator for low water consumption
- Connection: 1/2" NPT female thread - Single water inlet
- Standards compliance: NTC 1644
- Working temperature: 5°C to 71°C
- Maximum static working pressure: 860 kPa (125 psi)

CODE	DESCRIPTION	PRESENTATION	UND. PER PACK
01-1758-11	S Helix Pala mobile wall faucet	Box	24



Click aquí

PRISTINA

- Ceramic pad locking system for maximum durability with optimal durability and optimum performance
- Easy 1/4 turn locking
- Metal body and handles
- Single hole installation
- 360° rotating arm
- Built-in aerator for low water consumption
- Single water inlet
- Chrome-plated for wear and corrosion resistance - Built-in aerator for low water consumption
- Connection: 1/2" NPT female thread - Single water inlet
- Standards compliance: NTC 1644
- Working temperature: 5°C to 71°C
- Maximum static working pressure: 860 kPa (125 psi)

CODE	DESCRIPTION	PRESENTATION	UND. PER PACK
01-2863-11	S Pristina mobile wall faucet	Box	24



Click aquí

PRISTINA

- Ceramic pad locking system for maximum durability with optimal durability and optimum performance
- Easy 1/4 turn locking
- Metal body and handles
- Single hole installation
- 360° rotating arm
- Built-in aerator for low water consumption
- Single water inlet
- Chrome-plated for wear and corrosion resistance - Built-in aerator for low water consumption
- Connection: 1/2" NPT female thread - Single water inlet
- Standards compliance: NTC 1644
- Working temperature: 5°C to 71°C
- Maximum static working pressure: 860 kPa (125 psi)

CODE	DESCRIPTION	PRESENTATION	UND. PER PACK
01-2864-11	C Pristina mobile wall faucet	Box	12

DROP-IN KITCHEN SINKS



Click aqui

43cm ROUND STAINLESS STEEL KITCHEN SINK SET

- Material: 430 stainless steel
- 22 gauge
- Finish: bright brushed
- Recessed installation
- Dimensions: 43 cm diameter
- Depth: 18 cm
- Includes: white P siphon ref: 01-1941-15, regulation key ref: 01-3201-15, 4" basket ref: 01-1951-211 and connector ref: 01-1951-211
- ref: 01-3201-15, basket 4" ref: 01-1951-211 and connector ref: 01-1920-00
- To be installed with table or wall mixer faucets.
- Tilting of the basin to prevent water accumulation
- Corrosion resistant finish
- Installation: fixing with hooks
- Drill into the countertop based on the internal dimensions of the well of the basin

CODE	DESCRIPTION	PRESENTATION	UND. PER PACK
01-3170-611	Round recessed steel dishwasher 43 cm diameter with complements	Box	3



Click aqui

62 X 48 cm STAINLESS STEEL KITCHEN SINK SET

- 430 stainless steel
- 22 gauge
- Shiny brushing finish
- Drop-in sink installation
- Size: 62 X 48 cm
- Depth: 16 cm
- Includes: White P sink trap ref: 01-1941-15, 4" strainer ref: 01-1951-211
- Sloped bottom improving drainage
- Finish resist corrosion
- Attached underneath a countertop
- Kitchen table must be cut-out having in mind the internal measures of the bottom

CODE	DESCRIPTION	PRESENTATION	UND. PER PACK
01-3005-11	Dishwasher for mixer 8" without complements	Box	10
01-3006-11	Dishwasher for mobile faucet without complements	Box	10
L1-3005-11	Dishwasher for mixer 8" with complements	Box	10
L1-3006-11	Dishwasher for mobile faucet with complements	Box	10
PE-3037-11	Combo Dishwasher with Mixer 8" HELIX PALA	Box	10
PE-3038-211	Combo Dishwasher with Mobile Faucet HELIX PALA	Box	10



Click aqui

60X40 cm STAINLESS STEEL KITCHEN SINK SET

- Material: 430 stainless steel
- 22 gauge
- Finish: bright brushed
- Recessed installation
- Dimensions: 60 X 40 cm
- Depth: 16 cm
- Includes: white P siphon ref: 01-1941-15, baskets 4". ref: 01-1951-211
- To be installed with table or wall taps
- Tilt in the well to prevent water accumulation
- Corrosion resistant finish
- Installation: hook fixing
- Drill the countertop based on the internal measurements of the well of the basin
- PE-3040-411 includes extension wrench ref: 01-2992-11

CODE	DESCRIPTION	PRESENTATION	UND. PER PACK
01-3008-11	Dishwasher 60 x 40 cm steel built-in without accessories	Box	10
L1-3008-11	Dishwasher 60 x 40 cm steel built-in with accessories	Box	10
PE-3040-411	Dishwasher with hose extension faucet	Box	10



Click aqui

53 x 43cm STAINLESS STEEL KITCHEN SINK SET

- Material: 430 stainless steel
- 22 gauge
- Finish: bright brushed
- Sub mount installation
- Dimensions: 53 X 43 cm
- Depth: 18 cm
- Includes: white P siphon ref: 01-1941-15, 4" baskets ref: 01-1951-211, connector ref: 01-1920-00
- To be installed with single inlet faucets.
- Tilt in the well to prevent water accumulation
- Corrosion resistant finish
- Installation: fixing with hooks
- Drill the countertop based on the internal measurements of the well, of the basin
- PE-3066-11 includes 4" Mixer ref: 01-1808-11
- PE-3062-211 includes movable faucet rBuilt-in steel dishwasher 53 x 43 cm for movable faucet without accessories
- Built-in steel dishwasher 53 x 43 cm for movable faucet with accessories
- Dishwasher with 4" mixer HELIX PALA
- Dishwasher with mobile faucet HELIX PALA Table Top ref: 01-1750-11

CODE	DESCRIPTION	PRESENTATION	UND. PER PACK
01-3091-11	Built-in steel dishwasher 53 x 43 cm for movable faucet without accessories	Box	10
L1-3043-11	Built-in steel dishwasher 53 x 43 cm for movable faucet with accessories	Box	10
PE-3066-11	Dishwasher with 4" mixer HELIX PALA	Box	10
PE-3062-211	Dishwasher with mobile faucet HELIX PALA Table Top	Box	10

DROP-IN KITCHEN SINKS

84 x 56 cm STAINLESS STEEL DOUBLE BOWL KITCHEN SINK



Click aquí

- Material: 304 stainless steel
- 20 gauge
- Finish: bright brushed
- Installation: recessed
- Measurements: 84 X 56 cm
- Depth: 18 cm
- Tilt in basins to prevent water accumulation
- Corrosion resistant finish
- Includes: white P siphon ref: 01-1941-15, regulation key ref: 01-

- 3201-15, 4" basket ref: 01-3201-15, 4" basket ref: 01-1951-211, connector ref: 01-11920-00 and T-connection ref: 01-1951-211, 1920-00 and T-connection ref: 01-1945-15
- Installation: fixing with hooks
- Drill the countertop based on the internal dimensions of the well, of the basin
- 01-3136-211 includes mixer ref: 01-1828-11
- 01-3157-211 includes mixer ref: 01-2615-11

CODE	DESCRIPTION	PRESENTATION	UND. PER PACK
M1-3002-11	Dishwasher steel recessed 84 x 56 cm	Box	5
01-3136-211	Double Dishwasher with 8" Mixer TEDESCA	Box	5
M1-3063-11	Double Dishwasher mobile Faucet with complements	Box	5
01-3157-211	Double Dishwasher with single lever mixer Sion	Box	5

94 X 48 cm STAINLESS STEEL KITCHEN SINK



Click aquí

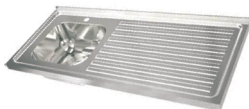
- Material: 430 stainless steel
- 22 gauge
- Finish: bright brushed
- Recessed installation
- Dimensions: 94 x 48 cm
- Depth: 16 cm
- Includes: white P siphon ref: 01-1941-15, basket 4" ref: 01-1951-211 and connector ref: 01-1920-00
- Corrosion resistant finish

- To be installed with single lever or single inlet faucets water inlet
- With slope in the drainer and the basin to avoid water accumulation.
- Anti-fungus silicone fixing
- Drilling of the countertop based on the internal measurements of the well
- PE-3034-411 and PE-3035-411 Including mobile table faucet ref: 01-1750-11

CODE	DESCRIPTION	PRESENTATION	UND. PER PACK
01-3003-11	Dishwasher right bowl without accessories	Box	10
01-3004-11	Left bowl dishwasher without accessories	Box	10
M1-3003-11	Right bowl dishwasher with accessories	Box	10
M1-3004-11	Left bowl dishwasher with complements	Box	10
PE-3034-411	Right bowl dishwasher with mobile faucet HELIX PALA	Box	10
PE-3035-411	HELIX PALA Left Dishwasher with Mobile Faucet	Box	10

TOP-MOUNT KITCHEN SINKS

120 X 50 cm STAINLESS STEEL KITCHEN SINK



Click aquí

- Material: 304 stainless steel
- 20 gauge
- Finish: bright brushed
- Installation: overlay
- Measurements: 122,5 x 53 cm
- Depth: 20 cm
- Includes: mobile faucet ref: 01-1731-11, white P syphon ref: 01-1941-15, basket 4" ref: 01-1951-211 and connector ref: 01-1920-00

- To be installed with single lever or single inlet faucets, water inlet
- Tilt in the well to prevent water accumulation
- Corrosion resistant finish
- Drill the countertop based on the internal measurements of the well of the sink
- C1-3095-211 and C1-3096-211 include movable wrench ref: 01-1750-11

CODE	DESCRIPTION	PRESENTATION	UND. PER PACK
L1-3079-11	Dishwasher steel 120 x 50 cm right dishwasher for mobile faucet	Box	3
L1-3080-11	Dishwasher steel 120 x 50 cm left dishwasher for mobile faucet	Box	3
C1-3095-211	Dishwasher right dishwasher with mobile faucet HELIX PALA	Box	3
C1-3096-211	Left dishwasher with mobile faucet HELIX PALA	Box	3

100 X 50 cm STAINLESS STEEL KITCHEN SINK



Click aquí

- Material: 430 stainless steel
- 22 gauge
- Finish: bright brushed
- Surface-mounted installation
- Dimensions: 100 x 50 cm
- Depth: 16 cm
- Includes: white P siphon ref: 01-1941-15, 4" basket ref: 01-1951-211 and 2 connectors ref: 01-1920-0000. ref: 01-1951-211 and 2 connectors ref: 01-1920-00
- To be installed with 8" faucets

- With inclination in the drainer and the well to prevent water accumulation
- Corrosion resistant finish
- Fastened with anti-fungus silicone
- Drill out the countertop based on the internal measurements of the sink of the bowl
- PE-3030-111 and PE-3031-111 Including Mixer ref: 01-1728-11

CODE	DESCRIPTION	PRESENTATION	UND. PER PACK
01-3000-11	Right side dishwasher without accessories	Box	10
M1-3000-111	Right side dishwasher with accessories	Box	10
01-3001-11	Left side dishwasher without accessories	Box	10
M1-3001-111	Left side dishwasher with accessories	Box	10
PE-3030-111	Right side dishwasher with 8" mixer HELIX PALA	Box	10
PE-3031-111	Left side dishwasher with 8" mixer HELIX PALA	Box	10

UNDERMOUNT KITCHEN SINKS



Click aqui

53 X 43 cm STAINLESS STEEL KITCHEN SINK

- Material: 304 stainless steel
- 20 gauge
- Finish: matte frosted
- Sub mount installation
- Dimensions: 53 x 43 cm
- Depth: 18 cm
- Includes: chrome-plated P siphon ref: 01-9997-11, 2 regulating faucets ref: 01-3201-15 and 4" basket ref: 01-3201-15 and basket 4" ref: 01-1995-11
- To be installed with table or wall mixer faucets.
- Tilting in the well to prevent water accumulation
- Corrosion resistant finish
- Installation: hook fixing
- Drill into the countertop based on the internal measurements of the well of the basin

CODE	DESCRIPTION	PRESENTATION	UND. PER PACK
01-3170-311	53 x 43 steel submount dishwasher with one bowl and accessories	Box	1

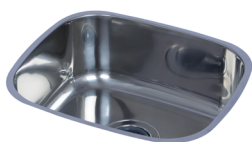


Click aqui

43 x 43 cm STAINLESS STEEL KITCHEN SINK

- Material: 304 stainless steel
- 20 gauge
- Finish: matte frosted
- Sub mount installation
- Dimensions: 43 x 43 cm
- Depth: 18 cm
- Includes: chrome-plated P siphon ref: 01-9997-11, 2 regulating faucets ref: 01-3201-15 and 4" basket ref: 01-3201-15 and basket 4" ref: 01-1995-11
- To be installed with table or wall mixer faucets.
- Tilting in the well to prevent water accumulation
- Corrosion resistant finish
- Installation: hook fixing
- Drill into the countertop based on the internal measurements of the well of the basin

CODE	DESCRIPTION	PRESENTATION	UND. PER PACK
01-3170-411	43 x 43 steel submount dishwasher with one bowl with accessories	Box	1



Click aqui

43 X 37 STAINLESS STEEL KITCHEN SINK

- Material: stainless steel
- Finish: satin brushed
- Sub mount installation
- Dimensions: 43 x 37 cm
- Depth: 16.5 cm
- Includes: siphon in white P ref: 01-1941-15, basket 4" ref: 01-1951-211
- To be installed with table or wall mixer faucets.
- Tilt in the well to prevent water accumulation
- Corrosion resistant finish
- Installation: Hook and loop fasteners
- Drill into the countertop based on the internal dimensions of the well of the basin

CODE	DESCRIPTION	PRESENTATION	UND. PER PACK
01-5301-20	Sub-mount steel dishwasher 43 x 37 cms with complements	Box	1

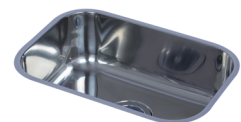


Click aqui

56 x 40 cm STAINLESS STEEL KITCHEN SINK

- Material: stainless steel
- Finish: satin frosted
- Installation: sub mounting
- Measurements: 56,5 x 40
- Depth: 18 cms
- Includes: siphon in white P ref: 01-1941-15, basket 4" ref: 01-1951-211
- To install with single lever faucets or single inlet faucets.
- water inlet
- Tilting in the basin to avoid the accumulation of water.
- Corrosion-resistant finish
- Installation: hook-and-loop fastener
- Drill into the countertop based on the internal measurements of the well

CÓDIGO	DESCRIPCIÓN	PRESENTACIÓN	UND. PER PACK
01-5302-20	Sub-mount steel dishwasher 56 x 40 cms with accessories	Box	1



Click aqui

50 X 34 cm STAINLESS STEEL KITCHEN SINK

- Material: stainless steel
- Finish: satin frosted
- Installation: to be sub mounted
- Measurements: 50 x 34.5 cm
- Depth: 16.5 cm
- Includes: siphon in white P ref: 01-1941-15, basket 4" ref: 01-1951-211
- To be installed with table or wall-mounted mixer faucets.
- Tilt in the well to prevent water accumulation
- Corrosion resistant finish
- Installation: Hook and loop fasteners
- Drill into the countertop based on the internal dimensions of the well of the basin

CODE	DESCRIPTION	PRESENTATION	UND. PER PACK
01-5303-20	Sub-mount steel dishwasher 50 x 34 cms with accessories	Box	1



80 X 50 cm STAINLESS STEEL KITCHEN SINK

- Material: stainless steel
- Finish: frosted matt
- Installation: sub mounting
- Measurements: 79.4 x 50.8 cm
- Depth: 20 cm
- Included: chrome-plated P-siphon ref: 01-9997-11S, regulating key ref: 01-3201-15
- To be installed with table or wall mixer faucets.
- Tilting of the basin to avoid water accumulation
- Corrosion resistant finish
- Installation: fixing with hooks
- Drill holes in the countertop based on the internal measurements of the well of the basin

Click aquí 

CODE	DESCRIPTION	PRESENTATION	UND. PER PACK
01-3210-6L11	80 x 50 double bowl right side undermount steel dishwasher with accessories	Box	1
01-3210-6R11	80 x 50 double bowl left side undermount steel dishwasher with accessories	Box	1



Cra 34 No. 8 A - 15
Bogotá - Colombia
info@gricol.com
Tel. (571) 360 38 99 / 360 04 66

WWW.GRICOL.COM