

L.I.G.H.T. Foundation

3rd Annual Report
December 2024



This report highlights the main activities and outcomes of the L.I.G.H.T. Foundation (LF) from January 1, 2024, to December 31, 2024. LF is an Indigenous-led native plant and pollinator conservation nonprofit.

TABLE OF CONTENTS

I. Executive Director Remarks.....	3
II. Our Mission & Tenets.....	4
III. Council of Guides & LF Teams.....	5
IV. Initiatives & Projects.....	6
Table 1. L.I.G.H.T. Foundation Projects in 2024.....	6
Institute of American Indian Arts (IAIA) Indigenous Co-Stewardship of Pollinators Workshop.....	7
Inchelium Red Garlic Planting Demonstration.....	7
Pacific Northwest (PNW) Tribal Climate Change Project (TCCP).....	8
V. We Swim Together Scholarship Program.....	10
Eric Stensgar Memorial Scholarship.....	10
VI. Sharing Our Voices.....	12
Public Comments.....	12
Presentations & Speaking Invitations.....	13
Press & Media.....	15
VII. Dollars & Sense.....	16
A Message to Our Donors & Partners.....	16
Financial Support.....	16
Annual Expense Allocations.....	17
Join Our Story, Share our Journey.....	18



I. Executive Director Remarks

It is my great joy to share this report as the new Executive Director of the L.I.G.H.T. Foundation (LF or Foundation), having come on board this past October after serving as founder and volunteer. This report marks the third year of LF operations, and the pages to come will showcase several achievements to celebrate. We have a small, but mightily effective and passionate group of individuals and organizations who have helped us grow in consistent strength and capacity. Since first incorporating as a 501(c)(3) nonprofit in 2022, we have successfully retained institutional knowledge, evolved the composition of our staff and volunteers, and are strategically growing our partnerships.

Various grants and funding agreements have supported the Foundation's work throughout the 2024 calendar year (January 1st - December 31st). Based out of the traditional territory of the Nespelem Tribe on the Colville Indian Reservation, we continue to provide local, regional, and (increasingly) national advocacy for Indigenous conservation, food systems, and climate adaptation through the implementation of our initiatives.

*Naqs spuʔs kʷu ła ckrám:
With one heart, we swim
together.*



We could not have come this far as an organization without the perseverance and determination of our first Executive Director, Joaquin Marchand. His tactical leadership and business acumen provided

our governing Council, staff, and volunteers the peace of mind and assurance necessary to make informed decisions at every step in our journey. We are thrilled to have Mr. Marchand continue with us in a new role, continuing his support and active implementation of our collective approach: “*Naqs spuʔs kʷu ła ckrám.*”

This Nselxcin phrase translates in English as: “With one heart, we swim together.” It is the epitome of the collective challenges we are undertaking to address habitat and biodiversity loss in the face of climate change. Just as the salmon take turns, swimming against the current in their journey upstream for the perpetuation of their generations, so must we. Our governing Council, new and existing staff, volunteers and partners are all with us, and we continue our journey into 2025 wrapping up this year stronger than ever.

Limlmt ul qeciyyew'yew' ka thank you. **In L.I.G.H.T., naqs spuʔs kʷu ła ckrám.**

Skʷumqnálqs
Amelia AM Marchand, MELP
Executive Director
amelia.m@thepnwlf.org



II. Our Mission & Tenets

The Foundation is an independent, Indigenous-led, charitable entity organized exclusively for educational, conservation, literary, and research purposes established in 2022. It supports the restoration and cultivation of native Plant and Pollinator Relatives and the culturally respectful conservation of habitats and ecosystems which are climate resilient and adaptive.

Specifically, LF was formed with a three-pronged mission to:

- ❖ Cultivate positive relationships between Indigenous Peoples and landowners in order to have shared outcomes in ecological stewardship, habitat conservation, and climate adaptation.
- ❖ Enrich communities by providing hands-on tools and support for teaching gathering traditions and honoring native plants and pollinators in culturally appropriate ways.
- ❖ Perpetuate the ecological heritage of Indigenous Peoples through intergenerational knowledge transmission and supporting traditional landscape practices.

Native Plant & Pollinator Relatives:

There are countless terrestrial and aquatic native plant species, fungi, and lichens used for food, medicine, cultural, spiritual, fabric, fiber, artistic, and construction purposes which are important to Indigenous Peoples. LF refers to these inclusively as “Plant Relatives” and recognizes that several of them rely upon the health and abundance of “Elder” trees (commonly referred to as mature and old-growth trees) and “Pollinator Relatives” like bees, birds, bats, butterflies, beetles, other insects, and small mammals.

Since our inception, LF has established tenets describing our philosophy and approach to the work we undertake. Through our **leadership**, we cultivate relationships between traditional gatherers and landowners which encourage mutually beneficial conservation easements while supporting food sovereignty and access rights. As an **Indigenous**-led and guided entity, we support projects which restore holistic land use practices of Indigenous Peoples and provide opportunities for community involvement and co-management. We develop partnerships with allies who protect pollinator health and the habitats of Indigenous **Spirit Relatives**, thereby acting as **guardians** of species and places. In all our actions, we **honor** and advocate for initiatives which strengthen the understanding of humanity’s reciprocal relationships with nature, particularly those that seek wisdom and knowledge of Indigenous Elders. Lastly, we **teach** and train others, nurturing educational opportunities that encourage participation in activities and academics of environmental stewardship, conservation, permaculture, and food sovereignty.

Spirit Relatives:

- ★ Traditional foods & first foods
- ★ Sacred & spiritual plants, animals & places
- ★ Plant & animal medicines
- ★ Fibers & materials



III. Council of Guides & LF Teams

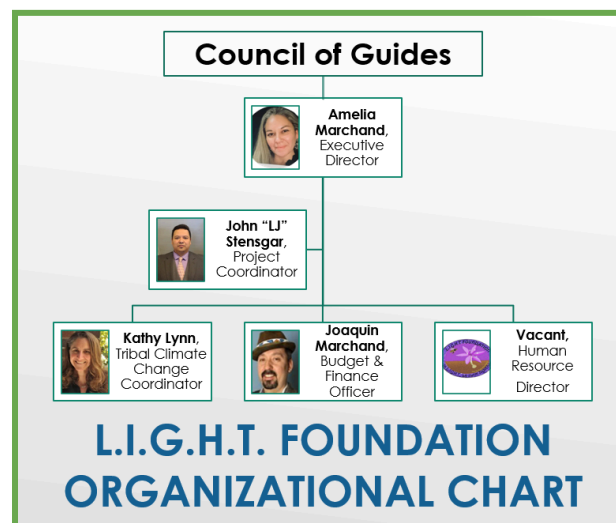
In keeping with the values of several Tribal Nations of the Plateau region, LF has identified culturally appropriate roles for a Council of Guides to fulfill the duties and responsibilities of the Western society's "board of directors" or "officers." The Foundation is fortunate to have maintained our three Primary Guides: Elmewhum (board chair/president), Spirit of the Rock (secretary), and Tyee (treasurer/finance chair). We are in the process of accepting additional applications to fill vacancies on the Council.

Currently serving on the Council is:

- Justin A. Williamson - Elmewhum (Confederated Tribes of the Colville Reservation: Sh̓ṛay̓ckstx)
- Dr. Kimberly Murphy - Tyee (Mesclaro Apache)
- Tess Williamson - Spirit of the Rock (Confederated Tribes of the Colville Reservation: Sh̓ṛay̓ckstx)

The Foundation has a team of four staff supporting initiatives and projects (one full-time, and three part-time), with a volunteer Advisory Team. Personnel contributing to LF work include:

- Amelia AM Marchand, MELP - Executive Director (Confederated Tribes of the Colville Reservation: Okanogan, Moses-Columbia, Palus, Chief Joseph Band of Wallowa Nez Perce, Sh̓ṛaṽckstx)
- John “LJ” Stensgar, Jr., BAB - Project Coordinator (Navajo Nation; Confederated Tribes of the Colville Reservation)
- Joaquin J. Marchand, MPA - Budget & Finance Officer (Confederated Tribes of the Colville Reservation: Sh̓ṛaṽckstx; Blackfeet; Iroquois)
- Kathy Lynn, MA - Tribal Climate Change Project Coordinator
- LF Advisory Team - Indigenous and non-Indigenous practitioners, experts, and specialists who serve as volunteers to help inform LF activities, share information and resources, and advise on project activities, and public comments



IV. Initiatives & Projects

During 2024, LF has continued projects in four initiatives which we've had since our founding: Roots for the Future, Certified Indigenous, Secure Harvest, and First Food Pollinators. A new initiative unveiled in the fall is titled Indigenous Climate Futures. Throughout 2024, LF has participated in eleven projects which support these initiatives.

Table 1. L.I.G.H.T. Foundation Projects in 2024

LF Project	ROOTS FOR THE FUTURE	SECURE HARVEST	CERTIFIED INDIGENOUS	FIRST FOOD POLLINATORS	INDIGENOUS CLIMATE FUTURES
Inchelium Red Garlic Restoration Coalition		X			
Northeast Washington Indigenous Prescribed Burning Network	X	X		X	X
Okanogan Food System Roundtable	X	X			X
Spokane Tribal Network Food Sovereignty Network	X	X			
Institute for American Indian Arts Indigenous Co-Stewardship of Pollinators in the Western U.S.	X		X	X	
Pacific Northwest Tribal Climate Change Project	X	X			X
Sixth National Climate Assessment		X			X
Cascadia Partner Forum	X	X		X	X
Columbia River Restoration	X				X
Oregon State University Youth Innovators Empowering Agriculture Across America Climate Change Curriculum		X		X	X
Indigenous Knowledge Keepers	X	X	X	X	X

In **Roots for the Future**, the Foundation has an emphasis to educate and inform land managers and academic institutions of the importance of Plant, Pollinator, and Spirit Relatives. The second initiative, **Secure Harvest**, identifies the status of food security, food system, and sovereignty policies of Pacific Northwest Tribes and determines the extent to which Plant and



Pollinator relatives are included in them. Under the **Certified Indigenous** initiative, LF seeks partnerships to help ensure native plants important to Indigenous Peoples are part of existing salmon, habitat, or wildlife safe certifications. In **First Food Pollinators**, the Foundation works to establish a resource hub to help identify and protect native pollinator species. The newest initiative, **Indigenous Climate Futures**, provides resources, research, support, and training for culturally-grounded climate adaptation while upholding Indigenous sovereignty and rights.

It is important to note that not every LF project identified in the table above has continuous or secured funding, but LF has a commitment to support our partners where we can, when we can. Highlights of a few 2024 projects are discussed below. Individuals and entities interested in learning more about the projects identified, or about exploring future collaborations with LF, are encouraged to contact the Executive Director.



Institute of American Indian Arts (IAIA) Indigenous Co-Stewardship of Pollinators Workshop

Occurred May 28th - 31st, 2024 in Santa Fe, NM. L.I.G.H.T. Foundation was selected to participate in this inaugural workshop which brought together Tribal networks, federal agencies, and other partners to share projects, collaborate, and support Tribal interests in pollinator monitoring. The objectives covered ranged from habitat management, policy development, Tribal

sovereignty and consultation processes, and networking of the participants whose work focuses in the areas of conservation and pollinator shared goals. Former Executive Director, and current Budget & Finance Officer, Joaquin Marchand, was the lead Foundation participant on this project.

Inchelium Red Garlic Planting Demonstration

Occurred September 27th, 2024 in Nespelem, WA (Colville Indian Reservation). The Inchelium Red Garlic Coalition project produced a 31-page report from community surveys taken, aimed to identify the level of interest and experience of Colville Reservation residents in gardening and Inchelium Red Garlic production. The project created an



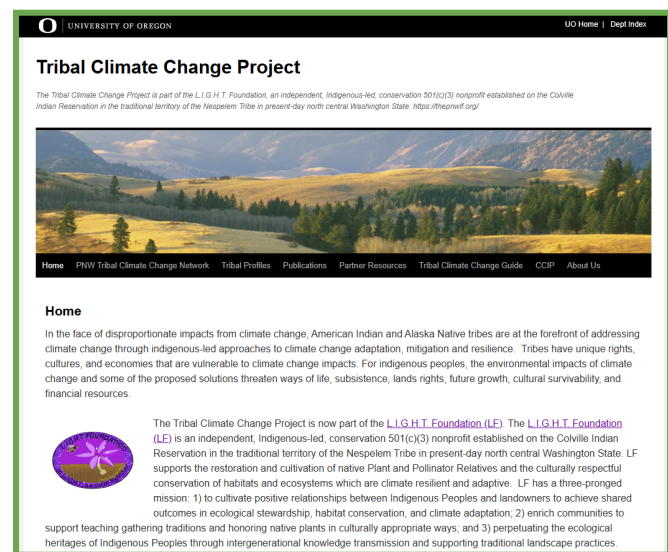
informal partnership with groups such as Washington State University (WSU) Extension Office, Blue Sky Minds, Colville Reservation Conservation District, Conservation Northwest, L.I.G.H.T. Foundation, and the Intertribal Agriculture Council. The coalition coordinated on development of a demonstration site for Inchelium Red Garlic at a plot operated by the Colville Tribal Greenhouse, and provided environmental educational outreach, a cooking demonstration, and site and hands-on planting instruction. Participants at the demonstration site were able to take home Inchelium Red Garlic bulbs for planting in their home gardens or for immediate culinary consumption. LJ Stensgar, Project Coordinator, was the lead Foundation participant on this project.

Pacific Northwest (PNW) Tribal Climate Change Project (TCCP)

Publicly announced in November, LF began hosting the [Pacific Northwest \(PNW\) Tribal Climate Change Project \(TCCP\)](#) as part of our Indigenous Climate Futures initiative¹. The PNW TCCP originally began as a collaborative project between the University of Oregon (UO) Environmental Studies Program and the USDA Forest Service Pacific Northwest Research Station in 2009 and has had significant support from diverse partners, including the Affiliated Tribes of Northwest Indians (ATNI), the Bureau of Indian Affairs (BIA), the Institute for Tribal Environmental Professionals (ITEP) and the Northwest Climate Adaptation Science Center (NW CASC), among others.

A hallmark of the PNW TCCP is the [PNW Tribal Climate Change Network](#), which serves as a communication mechanism to exchange information between Tribes, agencies, and other entities throughout and beyond the PNW region on climate policy, programs, grants and other opportunities for Tribal Nations and Indigenous Peoples to engage in climate issues². The Network also provides input into the development of project resources and helps focus on the most critical areas for research and action.

The TCCP also hosts the online [Tribal Climate Change Guide](#), which is a clearinghouse of information for Tribes on funding opportunities, publications, trainings, and more³. The Guide is updated on a weekly basis and we encourage our partners and visitors to explore it and share



¹ See **PNW TCCP** website at: <https://tribalclimate.uoregon.edu/>.

² See **Tribal Climate Change Network** website at: <https://tribalclimate.uoregon.edu/network/>.

³ See **Tribal Climate Guide** website at: <https://tribalclimateguide.uoregon.edu>

information that you would like to see added. Kathy Lynn, Tribal Climate Change Coordinator, is the lead for this ongoing project.

LF is proud to be the first inter-Tribal entity to exclusively host the PNW TCCP. It is our hope that this will support and advance climate information and resource sharing for Indigenous food sovereignty and gathering/harvesting rights, protection of native pollinator habitats and health, and Indigenous water security and sovereignty actions.

Throughout the year, LF was also invited to present at various venues and featured in media pieces. Those opportunities are provided in **Section VI. Sharing our Voices** on page 12 of this report.



V. We Swim Together Scholarship Program

Since LF's creation, the Council of Guides and staff have had a goal to support the education of Indigenous Peoples, with a primary focus to support citizens and descendants of the Confederated Tribes of the Colville Reservation. Embodying the action of LF's collective approach: *"Naqs spuʔs kʷu la ckrám"* (*"With one heart, we swim together"*), we acknowledge and wish to support the academic aspirations of Indigenous Peoples, no matter their field of study. We know that in the majority of scenarios, pursuing academic scholarship is time away from home, community, traditional knowledge keepers, and can also be far removed from sacred landscapes important to our nourishing our spirit and identity as Indigenous Peoples.

LF also knows that Indigenous ways of life, being, existence, and traditions have been suppressed throughout the history of colonization. Therefore, the creation of our We Swim Together Scholarship Program is meant to honor the intergenerational knowledge transfer of traditional teachings and the ongoing cultural practices of Tribal and Indigenous communities, because anyone can be an advocate for our Spirit Relatives – and everyone should.

Eric Stensgar Memorial Scholarship

Through the Eric Stensgar Memorial Scholarship, L.I.G.H.T. foresees awarding a \$2,500 scholarship to one eligible Colville Tribal citizen or descendant in the upcoming 2025-2026 school year.

Eric Stensgar was our brother and friend; an avid outdoorsman who was just as comfortable hiking the mountains of the San Poil Valley and calling for elk as he was watching the current of the Columbia River for schools of salmon. A traditional hunter, Eric provided love and nourishment to his family and community. He was a respected and accomplished salmon fisherman, earning the honorific title of "Uncle" among his own Tribal Elders and peers. He was most at home and at peace when in the lands and waters of his ancestors: feeling the wind, smelling the trees, and hearing the birds.



Tragically, we lost Eric to suicide during the fall of 2013. His passing was a painful reminder that American Indians and Alaska Natives are disproportionately affected by suicide, and that there

has been a significant twenty percent (20%) increase in Native suicide rates since 2015⁴. It is our belief at LF that the connection to and relationship with the lands, waters, and all our Spirit Relatives is vital to our health, wellbeing, identity, and sovereignty as Indigenous Peoples. Practitioners of Western medicine are increasing their understanding of these basic truths we have known since time immemorial, as evidenced by research from the American Psychological Association and the Yale School of the Environment⁵. The dedication of this memorial scholarship to Eric's joyful and nurturing spirit helps us acknowledge the life he lived and the healing power of Mother Earth.

Eric still brings laughter, joy, reflection, and inspiration to those of us who were fortunate to make memories with him. He inspired the painting featured on our LF website (and shown in the image at the beginning of this section) by artist Gregg Caudell, titled "Swims With Salmon," which shows Eric swimming with landlocked salmon in the San Poil River on the Colville Indian Reservation⁶.

We look forward to reviewing and awarding our first scholarship recipient in 2025 and will be announcing the scholarship recipient in the early spring of 2025 on our website and through our networks.

⁴Centers for Disease Control and Prevention. 15 Sept. 2024. Suicides Among American Indian or Alaska Native Persons - National Violent Death Reporting System, United States, 2015-2020. See: <https://www.cdc.gov/mmwr/volumes/71/wr/mm71137a1.htm#suggestedcitation>. See also: Suicide Prevention Resource Center's information about American Indian and Alaska Native Populations at <https://sprc.org/about-suicide/scope-of-the-problem/racial-and-ethnic-disparities/american-indian-and-alaska-native-populations/>.

⁵Weir, K. 1 April 2020. Nurtured by Nature: Psychological research is advancing our understanding of how time in nature can improve our mental health and sharpen our cognition. Vol. 51, No. 3. American Psychological Association. See: <https://www.apa.org/monitor/2020/04/nurtured-nature>. See also: Robbins, J. 9 Jan. 2020. Ecopsychology: How Immersion in Nature Benefits Your Health. Yale Environment 360, Yale School of the Environment. See: <https://e360.yale.edu/features/ecopsychology-how-immersion-in-nature-benefits-your-health>.

⁶ See more of Mr. Caudell's artwork at <https://gregg-caudell.pixels.com>.



VI. Sharing Our Voices

L.I.G.H.T. Foundation honors the teachings of our Elders and our Spirit Relatives through advocacy actions. This advocacy may look like composing public comments, providing presentations as guest speakers, or being featured in news articles and media to share our vital perspective and experiences about our Spirit Relatives, Indigenous Knowledges, and Indigenous Rights.

Public Comments

Since LF's creation, we have benefited greatly from an all-volunteer Advisory Team, which is a resource for guidance and input on many things. However, of primary importance is their role in the development of public comments for local, regional, national (and at times, international), actions⁷. In this capacity as a technical advisor, the Advisory Team is convened at least once a year, but also at times to provide contributions to the drafting of LF's public comments. We welcome inquiries and expertise from all who may be interested to support this effort.



Are you interested in joining our Advisory Team? Scan the QR Code to connect with us!

Generally, the Foundation will weigh in and respond to opportunities for public comment to:

- Favor the better governance and management of biodiversity (Plant and Pollinator Relatives specifically and Spirit Relatives generally) by affirming our position in support of Indigenous Peoples sovereignty, self-determination, human rights, and consent;
- Support Indigenous Peoples in implementing and leading planning and solutions, partnerships, and cooperative efforts across jurisdictions;
- Advance any of LF initiatives (Roots for the Future, Indigenous Climate Futures, Secure Harvest, First Food Pollinators, and Certified Indigenous) or projects.

Once a draft is composed, then it is presented to the Council of Guides, who reviews, provides edits, and decides via consensus whether or not the comments should be submitted. In 2024, the Foundation has participated in the public comment submission process on the following four topics:

- January - Region 5 & Region 6; California, Oregon, and Washington; Forest Plan Amendment for Planning and Management of Northwest Forests Within the Range of the Northern Spotted Owl
- May - Midnight Forest Restoration Project (#63933) Draft Environmental Assessment, Okanogan-Wenatchee National Forest
- June - Proposed Colville Tribal Code CTC 4-24 Cultural Plants

⁷ See **Share Our Journey - Let's Connect** page at: <https://tinyurl.com/328t4uc6>.



- November - Okanogan County Code Amendment 2023-1, Chapter 17A Zoning, Final Draft September 2024

LF is working hard to ensure that all of our comments are publicly available and accessible on our website under the “[Our Voices](#)” page⁸.

Presentations & Speaking Invitations

Throughout 2024, LF was invited to participate and present at six events. The image below is from one of those events, and features (L-R) Executive Vice President of Indigenous Affairs for Crow Canyon Archaeological Center Theresa Pasqual (Pueblo of Acoma); LF Executive Director Amelia Marchand; and National Association of Tribal Historic Preservation Officers (NATHPO) Executive Director.

March

- Invited to present to Conservation Northwest staff on the topic of Native Pollinators. Provided an overview of LF initiatives, specifically the First Food Pollinators initiative and previous reports and work completed by undergraduate and graduate interns from Western Washington University at the Loup Loup Canyon site. In-person presentation.
- Northwest (NW) Inter-Tribal Food Sovereignty Summit – [Food Sovereignty: The Core of Our Resilience](#)⁹. Invited to co-present on the topic of “Empowering Tribal Nations: Climate Resilience & Sustainability Strategies” which discussed LF’s experience in environmental advocacy, best practices, and innovative solutions for building resilience in the face of climate change. In-person attendance at Summit, which was held at the Coeur d’Alene Resort Casino in Worley, Idaho.



May

- Invited to present to Northwest Washington Indigenous Prescribed Burning Network (NW WA IPBN) General Meeting. Provided an overview of LF initiatives, specifically LF’s

⁸ See **Our Voices** page at: <https://thepnwlf.org/our-voices>.

⁹ See Food Sovereignty: The Core of Our Resilience page at: <https://www.eventbrite.com/e/northwest-intertribal-food-sovereignty-summit-tickets-692024633307?msocid=1bb1eb98a0176b4c1a7efeafa13a6a44>.



work on the Inchelium Red Garlic Revitalization Coalition and the Loup Loup Canyon site. Remote presentation.

“[I]f our nation wants to reduce fossil fuel energy sources and increase renewable energy sources like solar power and wind power, they have to do it in ways that don't further erode and degrade the rights of Tribal Nations and Indigenous Peoples to access sacred sites and access to their traditional foods and gathering rights.”

*Amelia Marchand, L.I.G.H.T. Foundation
Executive Director & Co-Founder*

October

- Northwest Climate Resilience Collaborative (NCRC) - [Climate Adaptation Barriers and Needs Experienced by Northwest Coastal Tribes: Key Findings from Listening Sessions](#)¹⁰. Invited to present with the research team (as a former co-Principal Investigator) on the project. Presentation discusses listening sessions with government staff, citizens, and elected officials from Northwest Coastal Tribes to better understand the barriers and unmet needs they experience in responding to these and other climate risks. Remote participation for webinar, which was recorded online.
- Fall Environmental Protection Agency (EPA) Region 1 Tribal Environmental Conference - Tribal Leaders Summit & Land Rematriation. Provided a presentation titled “Resilient Relatives & Ancestral Action: Inspiring Indigenous Food Sovereignty” which discussed the Secure Harvest and First Food Pollinators Initiatives. Specifically, LF’s work on the Okanogan Region Food Security Survey & Food System Assessment, Inchelium Red Garlic Revitalization Coalition, Louping Reciprocity: Applying Traditional Ecological Knowledge to an Educational Field Site, and the Workshop on Indigenous Co-Stewardship of Pollinators in the Western U.S. Remote participation with the conference, which was held online.

November

- U.S. Committee of the International Council of Monuments and Sites (ICOMOS) World Heritage Symposium and Conference – [Climate Change Impacts and Mitigation at U.S. World Heritage Sites](#)¹¹. Invited to present as part of panel, “Assuring that Indigenous Knowledge fits into the United Nations’ Strategic Development Goals (UN SDGs).”

¹⁰ See NCRC Climate Adaptation Barriers and Needs Experienced by Northwest Coastal Tribes: Key Findings from Listening Sessions page at: <https://cig.uw.edu/projects/climate-adaptation-barriers-and-needs-experienced-by-northwest-coastal-tribes-key-findings-from-tribal-listening-sessions/>.

¹¹ See Climate Change Impacts and Mitigation at U.S. World Heritage Sites website at: <https://worldheritageusa.org/past-symposia/2024-symposium/day-day-two-2024-symposium-speaker-biographies/>.



Presentation discusses vital demographics of Native Americans in the U.S., Indigenous Knowledges, LF initiatives and activities, and resources to integrate an Indigenous Rights-based approach to address climate action and ensure a just energy transition. Specifically, advancing and supporting the abilities of Indigenous Peoples to guard lands and biodiversity for environmental heritages and cultural ecologies. In-person attendance at Symposium and Conference, which was held at the Charles Sumner School in Washington, DC.

Press & Media

Throughout 2024, L.I.G.H.T. Foundation staff, volunteers, and partners have been honored and humbled to receive inquiries asking us to participate in media interviews and share our initiatives, projects, ideas, and perspectives. One feature was published late in 2023/early 2024 and was not reported on the 2023 Annual Report, thus, it is reflected here. The remaining three listed below were all published in 2024.

- December 2023/January 2024 article by Marijke Fakasiieiki for The Fig Tree: [“Foundation helps native leaders pass on traditions”](#)¹²
- March 6, 2024 article by Praveen Gupta for Illuminem: [“An Interview with Amelia Marchand: ‘I continue this good work for those yet to come’”](#)¹³
- Fall/Winter 2024 article by Nicholas Littman for Valley Voice: [“Bitterroot. Salmon. Huckleberry. Fly.”](#)¹⁴
- Fall/Winter 2024 article by Madelyn Hamilton for Valley Voice: [“The Revitalization of Inchelium Red: A Step Towards Food Sovereignty.”](#)¹⁵

“We all want healthy, thriving communities now and seven generations into the future, and that will always start and end with access to clean water and healthy, nutritious foods. That ideal doesn’t separate Indigenous Peoples from anyone else. It only continues to unite us.”

***Amelia Marchand, L.I.G.H.T Foundation
Executive Director & Co-Founder***

¹² See The Fig Tree article at: <https://www.thefigtree.org/dec23/120123marchandtribal.html>

¹³ See Illuminem article at: <https://illuminem.com/illuminemvoices/an-interview-with-amelia-marchand-i-continue-this-good-work-for-those-yet-to-come>

¹⁴ See Valley Voice article at: <https://mvcitizens.org/mvccs-latest-newsletter/>

¹⁵ Ibid Footnote 13.



VII. Dollars & Sense

We are proud that in 2024, the L.I.G.H.T. Foundation excelled at advancing our mission and initiatives. We could not accomplish these feats without the generosity, creativity, and innovation of our volunteers, donors, partners, and passionate staff. We plan to continue redefining conservation for our Plant and Pollinator Relatives through the approach of Indigenous Rights and Knowledges.

A Message to Our Donors & Partners



No matter what your Mother Tongue or language of choice is, we send our gratitude and appreciation to **all** of our donors and partners. Your amazing and unwavering support made our work in 2024 possible. We only grow, evolve, and become stronger from the relationships and allies we build. Here is a quick shout out to a few of our exceptional donors and partners, thank you all, we hope we've made you proud!

~ *Conservation Northwest*

~ *BlueSky Minds*

~ *S. King*

~ *CTCR Conservation District*

~ *LF Advisory Team & Council of Guides*

~ *American Endowment Foundation*

~ *Picea Consulting, LLC*

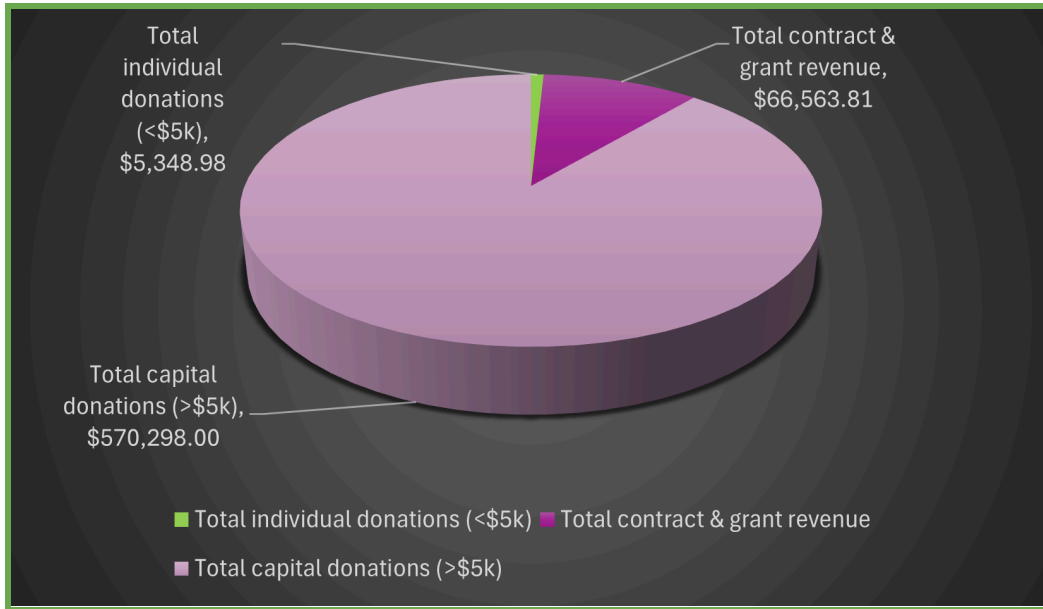
~ *CTCR WSU Extension*

~ *Edward and Mary Pierre Charitable Trust*

Financial Support

In 2024, L.I.G.H.T. Foundation obtained contracts and grants totaling \$66,563.81 towards applicable initiatives and projects. Additionally, LF received one capital donation exceeding \$5,000 and multiple individual donations totaling \$5,348.98. The capital donation has been secured in a reserve account, and is intended to sustain the long-term development of scholarship awards, introduced in **Section V. We Swim Together Scholarship Program** on page 10 of this report. For a break out of the revenue obtained by LF in 2024, see the image below.

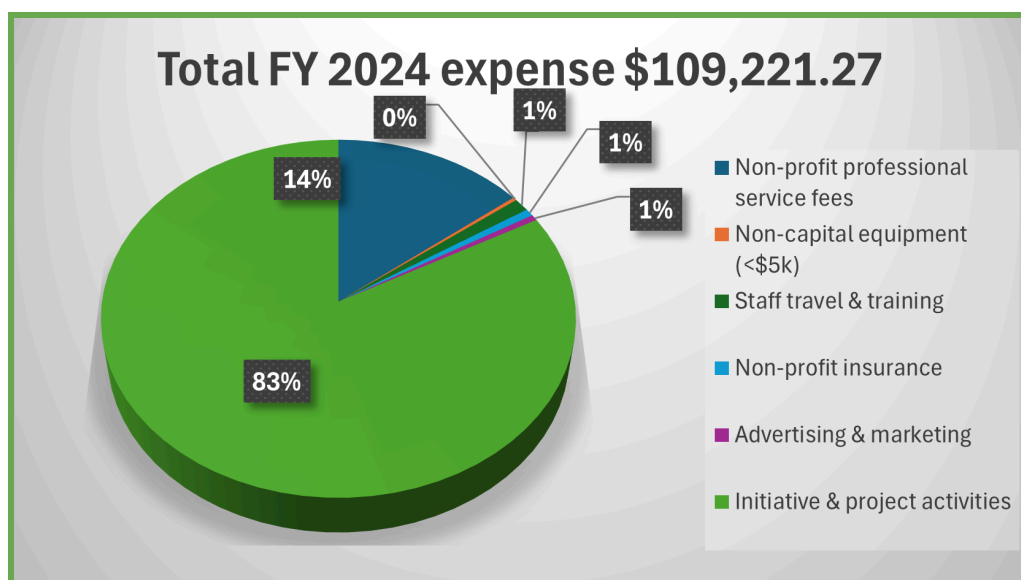




Annual Expense Allocations

Throughout 2024, over 83% of the LF budget was allocated directly to initiative and project-related activities through staff salaries. Following that, 14% of the budget supported LF's non-profit professional service fees for operational requirements like website and domain maintenance, internet, communications, and software maintenance.

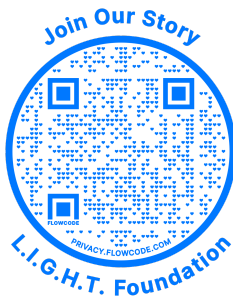
Minimal time and expenses of approximately 1% each were allocated from the 2024 budget to staff travel and training, advertising and marketing, and non-profit insurance. Of even limited expense, non-capital equipment (i.e., equipment less than \$5,000) for LF staff totaled closer to 0% of the total budget in 2024.



Join Our Story, Share our Journey

Our niche is speaking for, and acting on behalf of, those that have no voice: All our Spirit Relatives, for the next Seven Generations. It just makes sense. If our work speaks to you and you'd like to join us on this journey for local, regional, and national advocacy for Indigenous conservation, food systems, and climate adaptation, there are many ways to do so.

Join our story by scanning the **blue QR code**¹⁶ to:



1. Make an easy and hassle-free one-time donation - think of it as buying us a cup of tea or coffee!
2. Become a monthly supporter, where you know your donation becomes part of the inertia to support future generations.
3. Honor a loved one who is on your mind with a tribute donation respecting their values, lives, livelihoods, or memory.

Share our journey by scanning the **purple QR code**¹⁷ to:



1. Find ways to support our projects, initiatives, or activities
2. Learn about alternative ways to give financial gifts (i.e., options of legacy, workplace, or retirement giving).
3. Learn about ways you can join our journey through volunteer activities!
4. Request establishing a consulting arrangement with LF to enhance our shared goals.

¹⁶ See **Donation Center** website at: <https://thepnwlf.org/how-to-donate-%F0%9F%8C%B1>.

¹⁷ See **Share Our Journey - Let's Connect** page at: <https://tinyurl.com/328t4uc6>.





Naqs spu?s k^{wu} ła ckrám

*With one heart, we swim
together*