

# L.I.G.H.T. Foundation

---

4th Annual Report  
December 2025



This report highlights the main activities and outcomes of the L.I.G.H.T. Foundation (LF) from January 1, 2025, to December 31, 2025. LF is an Indigenous-led native plant and pollinator conservation nonprofit.

**TABLE OF CONTENTS**

- I. Executive Director Remarks..... 3**
- II. Our Mission & Tenets..... 4**
- III. Council of Guides & LF Teams..... 5**
- IV. Initiatives & Projects..... 7**
  - Table 1. Projects in 2025.....7
  - MACP Climate Resilience & Systems Leadership Workshop.....8
  - s?ulíp: Northeast Washington Indigenous Peoples Burning Network (NE WA IPBN)..... 9
  - Okanogan Region Food Council..... 10
  - Tribal Greenhouse Programs Subcommittee of the Inter-Tribal Native Plant & Seed Working Group (INPSW)..... 10
- V. We Swim Together Scholarship Program..... 12**
  - Eric Stensgar Memorial Scholarship..... 12
- VI. Sharing Our Voices..... 14**
  - Public Comments..... 14
  - Table 2. Public Comments Submitted in 2025..... 14
  - Advocacy Actions: Participation, Presence, and Presentations..... 15
  - Table 3. Participation, Presence, and Presentations in 2025..... 15
  - Press & Media..... 16
- VII. Dollars & Sense..... 18**
  - A Message to Our Donors & Partners..... 18
  - Financial Support..... 19
  - Table 4. Pollinator Relatives Workshop Sponsorship Levels..... 19
  - Graph 1. Revenue Obtained by LF in 2025..... 20
  - Annual Expense Allocations..... 20
  - Graph 2. LF Expenses in 2025..... 21
  - Join Our Story, Share our Journey.....21



# I. Executive Director Remarks

Once, many years ago, I received a message from **Ntytyix**, spring chinook salmon. The message came when I was enduring a very challenging time, one of the most obstacle-ridden and trying times I've ever experienced. I asked Ntytyix how and why they return to the Columbia River year after year. I wanted to know what compels them to endure a warming ocean with ever-reducing food sources, navigating over 500 miles upriver against deadly commercial and sportfishers, poisonous and toxic pollution, traversing fish ladders through eight different hydroelectric dams along the way...Only to be stopped by a literal wall constructed in Bridgeport, WA by the Army Corps of Engineers 545 miles into the journey. Another hydroelectric dam, separating them from the waters of their ancestors. Separating them from their duty and birthright.

***“Naqs spuʔs kʷu ła ćrá́m,” Ntytyix said. “With one heart, we swim together.”***

Instantly, I knew they did not do it for themselves. They endured for their children, and their children's children. They endured for all the generations yet to come, for all the generations that have come before. They take turns leading the pack against the current, and when the front Ntytyix tires, another takes its place, letting the first rest. Despite the actual state of things - the dams, pollution, climate change, commercial fishers, human destruction - Ntytyix persists.

This is the singular message that I share. Despite the actual political and social climate we've experienced in 2025 and we see on the horizon in 2026 - we persist. We endure for the generations to come, to honor the generations that have come before. In solidarity with our colleagues, friends, families, and all our Spirit Relatives - we persist.

Limlmt ul qeciyyew'yew' ka thank you. **In L.I.G.H.T., naqs spuʔs kʷu ła ćrá́m.**

Skʷumqnalqs  
Amelia AM Marchand, MELP  
Executive Director  
[amelia.m@thepnwlf.org](mailto:amelia.m@thepnwlf.org)



## II. Our Mission & Tenets

The Foundation is an independent, Indigenous-led, charitable entity organized exclusively for educational, conservation, literary, and research purposes established in 2022. It supports the restoration and cultivation of native Plant and Pollinator Relatives and the culturally respectful conservation of habitats and ecosystems which are climate resilient and adaptive.

### Native Plant & Pollinator Relatives:

There are countless terrestrial and aquatic native plant species, fungi, and lichens used for food, medicine, cultural, spiritual, fabric, fiber, artistic, and construction purposes which are important to Indigenous Peoples. LF refers to these inclusively as “Plant Relatives” and recognizes that several of them rely upon the health and abundance of “Elder” trees (commonly referred to as mature and old-growth trees) and “Pollinator Relatives” like bees, birds, bats, butterflies, beetles, other insects, and small mammals.

Specifically, LF was formed with a three-pronged mission to:

- ❖ Cultivate positive relationships between Indigenous Peoples and landowners in order to have shared outcomes in ecological stewardship, habitat conservation, and climate adaptation.
- ❖ Enrich communities by providing hands-on tools and support for teaching gathering traditions and honoring native plants and pollinators in culturally appropriate ways.
- ❖ Perpetuate the ecological heritage of Indigenous Peoples through intergenerational knowledge transmission and supporting traditional landscape practices.

Since our inception, LF has established tenets describing our philosophy and approach to the work we undertake. Through our **leadership**, we cultivate relationships between traditional gatherers and landowners which encourage mutually beneficial conservation easements while supporting food sovereignty and access rights. As an **Indigenous**-led and guided entity, we support projects which restore holistic land use practices of Indigenous Peoples and provide opportunities for community involvement and co-management. We develop partnerships with allies who protect pollinator health and the habitats of Indigenous **Spirit Relatives**, thereby acting as **guardians** of species and places. In all our actions, we **honor** and advocate for

### Spirit Relatives:

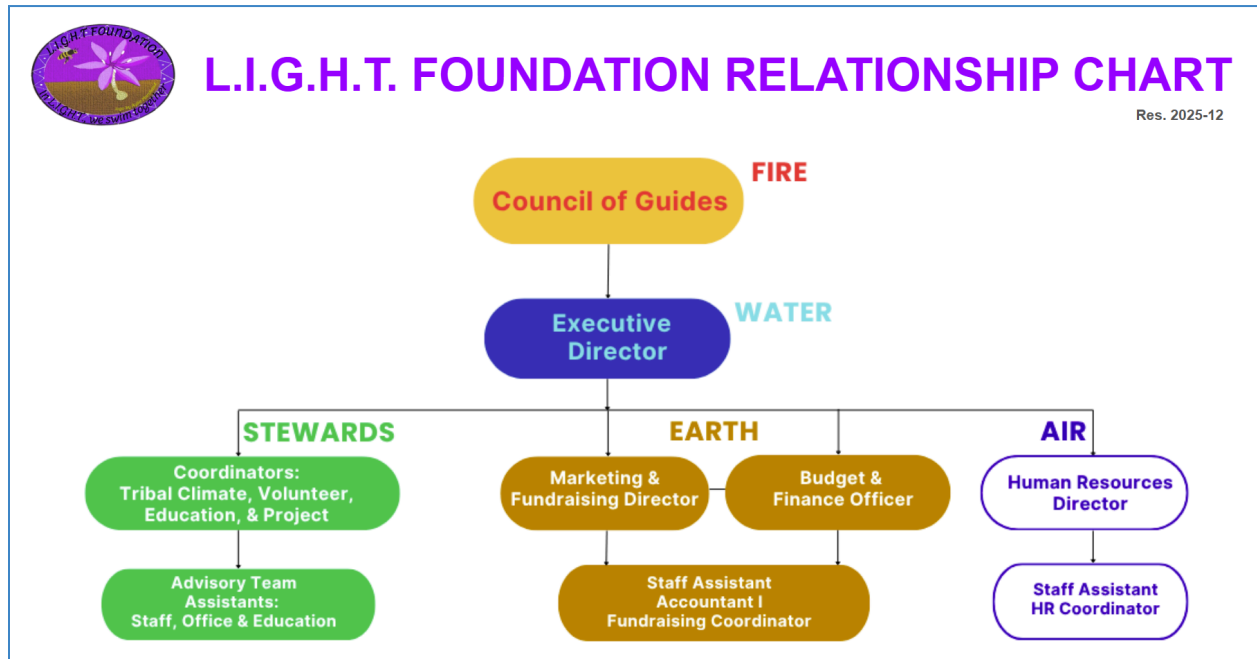
- ★ Traditional foods & first foods
- ★ Sacred & spiritual plants, animals & places
- ★ Plant & animal medicines
- ★ Fibers & materials

initiatives which strengthen the understanding of humanity’s reciprocal relationships with nature, particularly those that seek wisdom and knowledge of Indigenous Elders. Lastly, we **teach** and train others, nurturing educational opportunities that encourage participation in activities and academics of environmental stewardship, conservation, permaculture, and food sovereignty.



### III. Council of Guides & LF Teams

In keeping with the values of several Tribal Nations of the Plateau region, LF has identified culturally appropriate roles for a Council of Guides to fulfill the duties and responsibilities of the Western society’s “board of directors” or “officers.” The Foundation is fortunate to have maintained our three Primary Guides: Elmewhum (board chair/president), Spirit of the Rock (secretary), and Tye (treasurer/finance chair) this year. In 2025, we were also honored and excited to bring on two additional Guides, Maria Hines and Michael Buck.



Also new this year, the Council of Guides approved an updated “Relationship Chart,” which replaces the previously developed “Organizational Chart” for the Foundation. The new chart identifies the relationships and responsibilities between all elements of the organization, rather than an hierarchical chain of command, which is the focus of mainstream business and management organizational charts. Instead, the LF Relationship Chart acknowledges that all elements are in relationship with one another, none are separate, and all are connected and therefore accountable. The image describes how LF relationships are expressed and manifested through the elements of Fire, Water, Earth, and Air, to support our Stewards.

First, the element of **Fire (orange)** is represented by the Council of Guides, which provides the first power and energy to sustain our relationships. The role of Executive Director is represented by the element of **Water (blue)**, which channels the flow of power and energy to help grow our relationships. Administrative roles with responsibilities for financial management, fundraising, and marketing are represented in by **Earth (brown)**, as they provide vital nutrients to keep LF relationships healthy. Administrative roles with responsibilities for human resources management are represented by **Air (white)** which moves through all elements, provides life, and nourishes the wellbeing of our relationships. Finally, these relationships are integrated by



**Stewards (green)**, those LF staff and volunteers who help to nurture, perpetuate, grow, and expand the initiatives of the Foundation.

Currently serving on the Council is:

- Justin A. Williamson - Elmewhum (Confederated Tribes of the Colville Reservation: S̓h̓c̓a̓y̓ckstx )
- Dr. Kimberly Murphy - Tyee (Mesclaro Apache)
- Tess Williamson - Spirit of the Rock (Confederated Tribes of the Colville Reservation: S̓h̓c̓a̓y̓ckstx )
- Maria Hines - Guide (Ryukyuan)
- Michael Buck - Guide (Yakama Nation; Nooksack)

Throughout 2025, LF Council of Guides collectively donated 77 hours of their time to efforts of the organization. This volunteer work included 39 individual activities, from governance of the nonprofit via meeting attendance, reviewing public comments, to scholarship applicants and attending LF events. By the end of 2025, the Council of Guides had approved 14 resolutions for the financial, administrative, and governance responsibilities of operating the Foundation.

The Foundation has a team of four staff supporting initiatives and projects (two full-time, and two part-time), with a volunteer Advisory Team. Personnel contributing to LF work include:

- Amelia AM Marchand, MELP - Executive Director (Confederated Tribes of the Colville Reservation: Okanogan, Moses-Columbia, Palus, Chief Joseph Band of Wal'wáma Nimiipuu, S̓h̓c̓a̓y̓ckstx)
- Joaquin J. Marchand, MPA - Budget & Finance Officer (Confederated Tribes of the Colville Reservation: S̓h̓c̓a̓y̓ckstx; Blackfeet; Iroquois)
- Kathy Lynn, MA - Tribal Climate Change Project Coordinator
- John "LJ" Stensgar, Jr., BAB - Project Coordinator (Navajo Nation; Confederated Tribes of the Colville Reservation)
- LF Advisory Team - Indigenous and non-Indigenous practitioners, experts, and specialists who serve as volunteers to help inform LF activities, share information and resources, and advise on project activities, and public comments



In June of 2025, an LF Golf Team of Guides, staff and volunteers participated in the Lake Roosevelt Athletics Golf Scramble, a fundraiser for Lake Roosevelt Jr./Sr. High School Athletics. The event was held at Coyote Ridge Golf Course (formerly named Banks Lake Golf Course) and eleven teams joined in the tournament. LF's Golf Team tied for 4th place and enjoyed every minute of helping to raise funds for the local school district and support youth. The school district serves portions of the Colville Indian Reservation community, where LF is based.



## IV. Initiatives & Projects

During 2025, LF has continued projects in the Roots for the Future, Secure Harvest, First Food Pollinators and Indigenous Climate Futures Initiatives. A new initiative unveiled in the fall is titled Right Relations. Throughout 2025, LF has participated in twenty projects which support these initiatives.

**Table 1. Projects in 2025**

LF Project	ROOTS FOR THE FUTURE	SECURE HARVEST	RIGHT RELATIONS	FIRST FOOD POLLINATORS	INDIGENOUS CLIMATE FUTURES
Inchelium Red Garlic Restoration Coalition		X			
Northeast Washington Indigenous Prescribed Burning Network	X	X	X	X	X
Okanogan Food System Roundtable	X	X	X		X
Spokane Tribal Network Food Sovereignty Network	X	X			
Pacific Northwest Tribal Climate Change Project	X	X	X		X
Cascadia Partner Forum	X	X		X	X
Columbia River Restoration	X				X
Oregon State University Youth Innovators Empowering Agriculture Across America Climate Change Curriculum		X		X	X
Indigenous Knowledge Keepers	X	X	X	X	X
American Geophysical Union Climate Perspectives Paper		X	X		X
2026 Pollinator Relatives Workshop	X		X	X	
Climate Learning Constellation					X
MACP Climate Resilience Workshop			X	X	X
Tribal Greenhouse Programs Subcommittee of the Inter-Tribal Native Plant and Seed Working Group	X	X			X



**Table 1. Projects in 2025**

LF Project	ROOTS FOR THE FUTURE	SECURE HARVEST	RIGHT RELATIONS	FIRST FOOD POLLINATORS	INDIGENOUS CLIMATE FUTURES
Guardians of Gaia					X
2025 Minnesota Tribal Climate Camp	X	X	X	X	X
Conservation Futures Policy Project	X		X		
First Stewards Network	X		X		
2025 WA State Habitat Connectivity Plan	X	X	X	X	X
North Central Washington Food Sovereignty Council		X	X		X
Northwest Forest Group Collaboration		X	X	X	X
Tribal Voices on Pacific Northwest Hydrogen Hub			X		X

**Indigenous Climate Futures** provides resources, research, support, and training for culturally-grounded climate adaptation while upholding Indigenous sovereignty and rights. In **First Food Pollinators**, the Foundation works to establish a resource hub, network, and mechanisms to help identify and protect native pollinator species. In **Roots for the Future**, the Foundation has an emphasis to educate and inform land managers and academic institutions of the importance of Plant, Pollinator, and Spirit Relatives. The **Secure Harvest** initiative supports food security, food system, and sovereignty policies of Pacific Northwest Tribes. Under the newest initiative, **Right Relations**, LF seeks partnerships to advance the stewardship and protection of Spirit Relatives in certification, land management, and legal processes to facilitate and support reciprocal and sustaining relationships centered on Indigenous practices and worldviews.

As in previous years, not every LF project identified in the table above has continuous or secured funding, but LF has a commitment to support our partners where we can, when we can. Highlights of a few 2025 projects are discussed below. Individuals and entities interested in learning more about the projects identified, or about exploring future collaborations with LF, are encouraged to contact the Executive Director.

### **MACP Climate Resilience & Systems Leadership Workshop**

L.I.G.H.T. Foundation was honored to be nominated by First Nations Development Institute (FNDI) to join them at a Climate Resilience & Systems Leadership Workshop in Uxmal, Mexico on the Yucatan Peninsula. Funded by Margaret A. Cargill Philanthropies (MACP), LF participated in a global cohort of climate resilience practitioners to build systems leadership



capacity within diverse Indigenous and minority communities, increasing the impact of the collaborative work participants lead and engage in. The workshop featured key presentations by the Mayan Melipona Bee Sanctuary, a nonprofit organization committed to sustaining the ancient practice of Mayan beekeeping. Led by Indigenous women and focused on environmental monitoring, community resilience, and public health, they steward the native bees and the ecosystem, monitoring against chemical inputs from agricultural producers and development. One field trip included a visit to Xtampú Saltworks at Telchac Puerto. Located on a spit of land that lies in between the Gulf of Mexico and the Laguna Rosada (the Rose Lagoon), several harvesting sites are rich in pink algae, high in carotenoids. Mayans continue to cultivate and harvest the culinary pink and white salt as they have for thousands of years, a tradition now threatened by climate change. These forms of eco-tourism have been a valuable way for Indigenous Peoples to continue their traditional practices while also protecting the environment and sustaining cultural livelihoods. Navigating shifting environmental conditions under climate change and expanding human development continues to be a challenge to community and ecosystem resilience.



## ***sʔulíp: Northeast Washington Indigenous Peoples Burning Network (NE WA IPBN)***

The word sʔulíp<sup>1</sup> is the Spokane Salish language word for “flame,” the moniker for the region's Northeast Washington Indigenous Peoples Burning Network (NE WA IPBN). This honors the origin of the NE WA IPBN, which began in the homeland territory of the Spokane Tribe of Indians. In January, LF was asked to co-lead sʔulíp with project partners through supportive organization, strategy, and facilitation. sʔulíp was designed to help support the sacred relationship with fire and communicate the sacred subject of cultural burning between Tribal Nations and Indigenous Peoples (TIP), promote cultural burning activities, and safeguard TIP cultural



*the name of the group “sʔulíp” has not been capitalized.*

burning practices rooted in Indigenous worldviews. This places sʔulip within the Roots for the Future Initiative.

Over the course of 2025, the Foundation developed a Free, Prior, Informed Consent (FPIC) process for participants, launched a bi-monthly Speaker Series and monthly newsletter, and helped facilitate an in-person Good Fire Gathering for participants. The Speaker Series provides an opportunity for participants to discuss fire sovereignty and associated cultural practices, while the monthly Embers Newsletter features resources, news and information. In the fall, sʔulip was invited to provide early review and feedback of the Washington State Department of Natural Resources Prescribed Fire Claims Fund. The Foundation was honored to facilitate discussions within sʔulip about the Claims Fund and provide feedback from the all-volunteer IPBN. At the end of 2025, sʔulip had 20 total participant entities and almost 50 individual participants, with over half from Tribal Nations and inter-Tribal organizations. Other participants include non-governmental organizations, education and academia, federal, and state partners.

## ***Okanogan Region Food Council***

The Foundation has been a participant in the Okanogan Region Food Council since it was first created in October 2022, and this project sits firmly within the Secure Harvest initiative. Over the years, LF has contributed to the development of the ORFC's Local Community Food System Assessment<sup>2</sup> and supported the creation of the ORFC's 10-year Food Action Plan. In the Summer of 2025, ORFC unanimously approved the inclusion of an LF objective into the Food Action Plan: *Securing the Harvest for First Food Pollinators and Indigenous Climate Futures*. This objective combines three key LF initiatives which work in tandem to educate and advocate for the protection of native plants and pollinators, climate resilient watersheds, and healthy communities.



## ***Tribal Greenhouse Programs Subcommittee of the Inter-Tribal Native Plant & Seed Working Group (INPSW)***

During the summer/fall of 2025, LF was invited to join the Inter-Tribal Native Plant and Seed Working Group (INPSW, Working Group). Multiple goals of the Working Group intersect with LF initiatives, but primarily reside within the Roots for the Future Initiative. LF began facilitating the

---

<sup>2</sup> See Okanogan Region Food Council and the Local Community Food System Assessment at: <https://www.blueskymindsnonprofit.com/food-council>.



Tribal Greenhouse Programs Subcommittee in November with the priority to have representatives of Tribal Nations and Indigenous Peoples throughout the United States and Canada participate on the Planning Team with their preferred Plant Relative goals and objectives, equitably leveraging diverse Indigenous Knowledges and experiences.

## Tribal Greenhouse Programs (TGP) subcommittee

- October 2025 - Formed volunteer Planning Team
  - 8 different TIP entities and accomplices
- November 2025 - January 2026
  - Organizing meeting structure
  - Identified 12 goals/objectives
  - Identified 4 actionable activities
  - Building resource list
- February 2026 - Future
  - Further define and streamline goals, objectives, and activities

The Tribal Greenhouse Programs subcommittee currently has 9 different individuals representing 8 different TIP entities and accomplices. The Planning Team has identified about 12 goals and are still going through the process of further strategizing, defining, and streamlining them. LF is proud to host the Tribal Greenhouse Programs Subcommittee. It is our hope that this will support and advance information and resource sharing for Indigenous food sovereignty, habitation restoration and recovery, and the protection of native pollinator habitats and health.



## V. We Swim Together Scholarship Program

Embodying the action of LF's collective approach: *"Naqs spuʔs kʷu ła ćrá́m"* (*"With one heart, we swim together"*), we acknowledge and wish to support the academic aspirations of Indigenous Peoples, no matter their field of study. We know that in the majority of scenarios, pursuing academic scholarship is time away from home, community, traditional knowledge keepers, and can also be far removed from sacred landscapes important to nourishing our spirit and identity as Indigenous Peoples.

LF also knows that Indigenous ways of life, being, existence, and traditions have been suppressed throughout the history of colonization. Therefore, the creation of our We Swim Together Scholarship Program is meant to honor the intergenerational knowledge transfer of traditional teachings and the ongoing cultural practices of Tribal and Indigenous communities, because anyone can be an advocate for our Spirit Relatives – and everyone should.

Since LF's creation, the Council of Guides and staff have had a goal to support the education of Indigenous Peoples, with a primary focus to support citizens and descendants of the Confederated Tribes of the Colville Reservation. Through the Eric Stensgar Memorial Scholarship, the Foundation awards an annual \$2,500 scholarship to one eligible Tribal citizen or descendant per year. LF Guides and volunteers serve as the reviewers on the Scholarship Committee, with applications open every spring.

The Foundation has a goal to establish a second scholarship, open to Indigenous Peoples more broadly. This effort was strategized in 2025 and is anticipated to come into fruition in 2026.

### *Eric Stensgar Memorial Scholarship*



We were thrilled to share Sydney Sparks, citizen of the Confederated Tribes of the Colville Reservation, was awarded LF's 2025 Eric Stensgar Memorial Scholarship. Ms. Sparks is a student at the University of Oregon (UO) and is interested in supporting the native plants and traditional foods of her community. She stated, *"In light of climate change, I know the clock is ticking.*

*Indigenous practices, traditional*

*land management, and the kinship worldview has proven to be effective for thousands of years. If we adopted more of these practices across communities on a large scale, we could stop, if not*



*reverse the effects of climate change. However, **in order to protect other communities, I believe I should start with mine.***"

Ms. Sparks is currently pursuing a Bachelor's degree in Environmental Science at UO, has been named on the Dean's list three different times, and maintains a GPA of 3.7-4.0. Passionate about wildlife conservation, she has worked with her Tribal Nation's Fish & Wildlife Department as an intern at the Chief Joseph Hatchery on the Columbia River. Through this internship, she has gained experience in field research, documenting species behavior, and implementing habitat improvement projects. Knowing that salmon are at threat of extinction, Ms. Sparks is focused on learning and educating others about the importance of salmon and the vital role they play in the entire Pacific Northwest ecosystem.

Ms. Sparks was a graduate of Okanogan High School, where she was a tri-sport athlete, member of the Key Club, National Honor Society, and the Native American Club - all while maintaining a 3.8-4.0 GPA. LF was honored to provide this \$2,500 scholarship award to Ms. Sparks, and excited to support her academic journey in Indigenous environmental stewardship!

LF shares information about upcoming opportunities on our website under the "[Scholarships](#)" page<sup>3</sup>.

---

<sup>3</sup> See **Scholarships** page at: <https://thepnwlf.org/scholarships-%F0%9F%8C%B1>



## VI. Sharing Our Voices

L.I.G.H.T. Foundation honors the teachings of our Elders and our Spirit Relatives through advocacy actions such as composing public comments, providing presentations as guest speakers, publishing or being featured in news articles and media to share our vital perspective and experiences about Indigenous Knowledges, conservation, and rights.

### Public Comments

Generally, the Foundation will weigh in and respond to opportunities for public comment when there is capacity and interest. The purpose of providing public comments is to:

- Favor the better governance and management of biodiversity (Plant and Pollinator Relatives specifically and Spirit Relatives generally) by affirming our position in support of Indigenous Peoples sovereignty, self-determination, human rights, and consent;
- Support Indigenous Peoples in implementing and leading planning and solutions, partnerships, and cooperative efforts across jurisdictions;
- Advance any of LF initiatives (Roots for the Future, Indigenous Climate Futures, Secure Harvest, First Food Pollinators, and Certified Indigenous) or projects.

Since the Foundation’s creation in 2022, LF has provided over 18 public comments to Tribal, federal, state, and local government actions. The 2025 year was very active, as substantial federal policy shifted and conservation and environmental protections were rolled back and adversely impacted. Fortunately, LF was able to submit 5 comments total.

**Table 2. Public Comments Submitted in 2025**

Date Submitted	LF Initiative	Comment Name	Lead Agency
2025 December	Secure Harvest, Indigenous Climate Futures, Roots for the Future	Proposed Rule for Definition of Waters of the United States	Environmental Protection Agency & U. S. Army Corps of Engineers
2025 September	Indigenous Climate Futures, Secure Harvest, First Food Pollinators, Roots for the Future, Certified Indigenous, We Swim Together	Rescission of 2009 Endangerment Finding & GHG Vehicle Standards	Environmental Protection Agency
2025 September	Indigenous Climate Futures, First Food Pollinators, Roots for the Future, Secure Harvest, Certified Indigenous	Rescission of 2001 Roadless Area Conservation Rule	USDA Forest Service
2025 May	Roots for the Future, Secure Harvest	Sign onto FY26 Funding Request for BLM Plant Conservation & Restoration Program	U.S. House of Reps; Subcom on Interior, Environment, and Related Agencies
2025 March	Roots for the Future, Secure Harvest	Northwest Forest Plan Amendment DEIS Comments	USDA Forest Service

Additionally, LF signed onto a joint comment with other conservation nonprofits and organizations to the Bureau of Land Management regarding their Plant Conservation and Restoration Program.



LF works hard to ensure that all of our comments are publicly available and accessible on our website under the [“Our Voices”](#) page<sup>4</sup>.

## ***Advocacy Actions: Participation, Presence, and Presentations***

Over the years, Foundation staff continue to participate in various levels with diverse groups to advance our initiatives. In 2025, LF staff continued to participate in key advisory or leadership groups for the Tribal Resilience Action Database, the Cascadia Partner Forum, and the Okanogan Region Food Council. We also continue to participate in the Tribal Food Sovereignty Action Team coordinated by the Spokane Tribal Network and the Inchelium Red Garlic Revitalization Coalition coordinated by Blue Sky Minds.

Additionally, LF continues to host the Pacific Northwest Tribal Climate Change Project, which provides monthly meetings, a weekly email bulletin, and an online resource guide.

***Table 3. Participation, Presence, and Presentations in 2025***

<b>January</b> - Participated in the MACP Climate Resilience & Systems Leadership Workshop in Uxmal, Mexico
<b>February</b> <ul style="list-style-type: none"> <li>● Launched Planning Team for the 2026 Pollinator Relatives Workshop</li> <li>● Participated remotely in the Indigenous Gathering for Post-Wildfire Restoration in Vancouver, BC</li> <li>● Joined Planning Team for 2025 Tribal Climate Camp</li> </ul>
<b>April</b> - Presented remotely to the Council on Foreign Relations about Indigenous Climate Futures Initiative and the subject of Indigenous Faith and Climate Policy
<b>May</b> - Provided input on Washington State Habitat Connectivity Action Plan
<b>June</b> <ul style="list-style-type: none"> <li>● Held four listening sessions with Tribal Nations for the Pacific Northwest Hydrogen Hub Project</li> <li>● Presented to the Okanogan Region Airshed Partnership about Roots for the Future Initiative and sʔulíp</li> <li>● Launched Embers, monthly newsletter for sʔulíp participants</li> </ul>
<b>July</b> - Participate in Inchelium Red Garlic Harvest Celebration
<b>September</b> - Facilitated the 2025 Tribal Climate Camp in Minnesota, hosted by the White Earth Nation

<sup>4</sup> See **Our Voices** page at: <https://thepnwlf.org/our-voices>.



**October** - Presented remotely to Montana State University Food Systems Class about Secure Harvest Initiative

**November** - Joined Conservation Futures Policy Project Advisory Group

**December** - Joined North Central Washington Food Council Advisory Group

## Press & Media

Beginning in 2025, the Foundation began composing and publishing Indigenous Conservation Vignettes (ICVs). These are short articles published on the LF website that highlight important conservation, climate, and/or food/water sovereignty work that Tribal Nations and Indigenous Peoples (TIP) are actively engaged in. The purpose of ICVs is to advance the understanding of and contributions to conservation and environmental action which are led or coordinated by and for Indigenous Peoples.

Sharing of these ICVs in media not only acknowledges and highlights significant work occurring in TIP communities by Indigenous leaders, but also helps elevate and echo their actions to a supportive network. So not only are Indigenous leaders in environmental heritage and cultural ecologies honored, but individuals who are less familiar with Indigenous conservation have the opportunity to learn the values and worldviews embedded in Indigenous conservation practices.



LF published four ICVs in 2025, and as they were shared and distributed on our social media pages, our significance as a notable and/or leading Indigenous conservation nonprofit organization has expanded. We are honored to elevate the accomplishments and expand the influence of those TIP individuals and groups featured in LF ICVs.

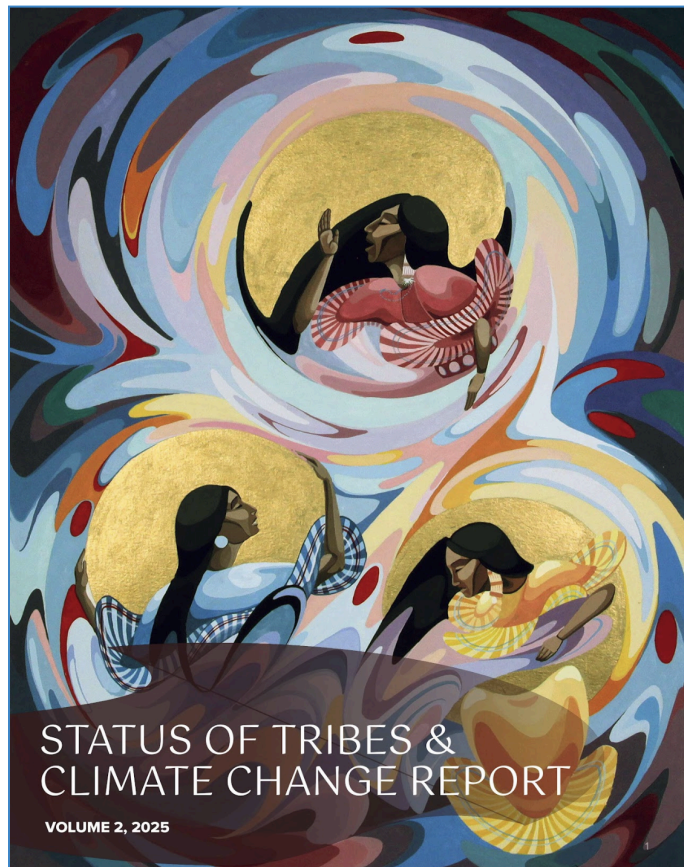
- The first ICV featured Kathy Moses, a citizen of the Confederated Tribes of the Colville Reservation. It was published in March.
- In April, LF featured Dr. Melodi Wynne in the second ICV story. Dr. Wynne is a citizen of the Spokane Tribe of Indians.
- The third ICV featured Elaine Harvey, a citizen of the Yakama Nation. It was published in September.



- The last ICV published in December, and provided information about the very successful s?ulip 2025 Good Fire Gathering held in October.

Additionally, the LF was featured in two chapters of the newly published [Status of Tribes & Climate Change Report, Volume 2](#)<sup>5</sup>. Some of the advocacy actions for Spirit Relatives can be found in "[Chapter 6 - Political Challenges and Opportunities for Indigenous-Led Conservation](#)" and "[Chapter 7 - Indigenous-Led Conservation](#)." LF anticipates collaborating with publisher Institute for Tribal Environmental Professionals (ITEP) and co-authors of Chapter 7 - Indigenous-Led Conservation to provide a webinar about the chapter content in early 2026.

LF retains press releases and news updates on our website under the "[News](#)" page<sup>6</sup>.



<sup>5</sup> See ITEP Status of Tribes and Climate Change Report at: <https://sites.google.com/view/staccreport/access-the-reports/stacc-volume-2?authuser=0>

<sup>6</sup> See **News** page at: <https://theptnwf.org/news%F0%9F%8C%B1>.



## VII. Dollars & Sense

In 2025, L.I.G.H.T. Foundation continued to advance our mission and initiatives. We could not accomplish these feats without the generosity, creativity, and innovation of our volunteers, donors, funding partners, and passionate staff.

### *A Message to Our Donors & Partners*

We are so grateful and appreciative to our donors and funding partners! We especially want to thank some of our key partners in 2025, including:

- ★ *Conservation Northwest*
- ★ *BlueSky Minds*
- ★ *Picea Consulting, LLC*
- ★ *Natural Resources Defense Council*
- ★ *University of Washington EarthLab*
- ★ *The Common Acre*
- ★ *Na'ah Illahee Fund*
- ★ *CTCR WSU Extension*
- ★ *CTCR Conservation District*
- ★ *Institute for Tribal Environmental Professionals*
- ★ *LF Advisory Team & Council of Guides*






Na'ah Illahee Fund is one partner we'd like to highlight in particular. Their funding helped LF bring the PNW Tribal Climate Change Network to Tribes and Indigenous Peoples in 2025. Participants in our monthly meeting were happy to give them a thumbs up to them as a visual thank you!



## Financial Support

In November, the Foundation launched a new funding mechanism to help direct funds specifically to the 2026 Pollinator Relatives Workshop - a sponsorship package. This funding mechanism is one we will be monitoring and tracking, as it may be beneficial for future endeavors. The sponsorship package levels range from \$1k-\$7k, and there are also several different à la carte sponsorship options available as well, ranging from \$500-\$1k.

**Table 4. Pollinator Relatives Workshop Sponsorship Levels**

Bee \$1,000	Moth \$2,000	Bat \$3,000	Butterfly \$5,000	Hummingbird \$7,000
<ul style="list-style-type: none"> <li>*Logo on LF website</li> <li>*Logo in event digital/pdf program</li> <li>*Post-event recognition in LF newsletters &amp; social media</li> </ul>	<ul style="list-style-type: none"> <li>*Logo on LF website</li> <li>*Page space in event digital/pdf program</li> <li>*Post-event recognition in LF newsletters &amp; social media</li> </ul>	<ul style="list-style-type: none"> <li>*Logo on LF website</li> <li>*Page space in event digital/pdf program</li> <li>*Pre- and post-event recognition in LF newsletters &amp; social media</li> <li>*Contribute 1 item to TIP Delegate Welcome Bag</li> </ul>	<ul style="list-style-type: none"> <li>*Logo on LF website</li> <li>*Page space in event digital/pdf program</li> <li>*Pre- and post-event recognition in LF newsletters &amp; social media</li> <li>*Contribute 1 item to TIP Delegate Welcome Bag</li> <li>*Verbal recognition on Day 1 of event</li> </ul>	<ul style="list-style-type: none"> <li>*Logo on LF website</li> <li>*Page space in digital/pdf event program</li> <li>*Pre- and post-event recognition in LF newsletters &amp; social media</li> <li>*Contribute 2 items to TIP Delegate Welcome Bag</li> <li>*Daily verbal recognition during event</li> <li>*TIP Delegate list (by consent)</li> <li>*Exclusive 1hr, 1:1 remote meeting with LF, post-event</li> </ul>
				

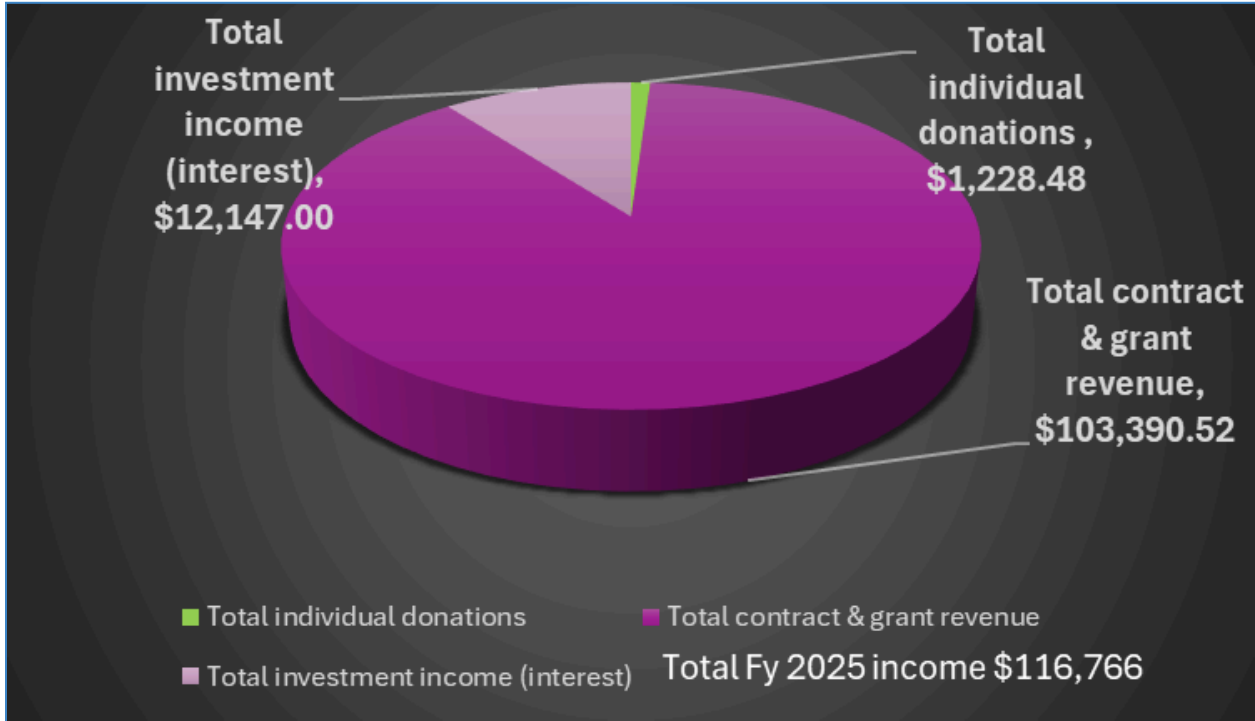
Throughout 2025, L.I.G.H.T. Foundation obtained contracts and grants totaling \$103,390.52 towards applicable initiatives and projects. Through LF’s reserve account, the Foundation received \$12,147.00 of interest earned. Additionally, LF received multiple individual donations totaling \$1,128.48 - the fruit of a December fundraising campaign which allocated all donations received during that time to be directed to the We Swim Together Scholarship Program.

LF staff have developed a fundraising plan for the coming year, and anticipate additional donations and sponsorship appeals in 2026.

The donations are part of a secured reserve account, and are intended to sustain the long-term development of scholarship awards, introduced in **Section V. We Swim Together Scholarship Program** on page 12 of this report. For a break out of the revenue obtained by LF in 2025, see the following image below.



Graph 1. Revenue Obtained by LF in 2025



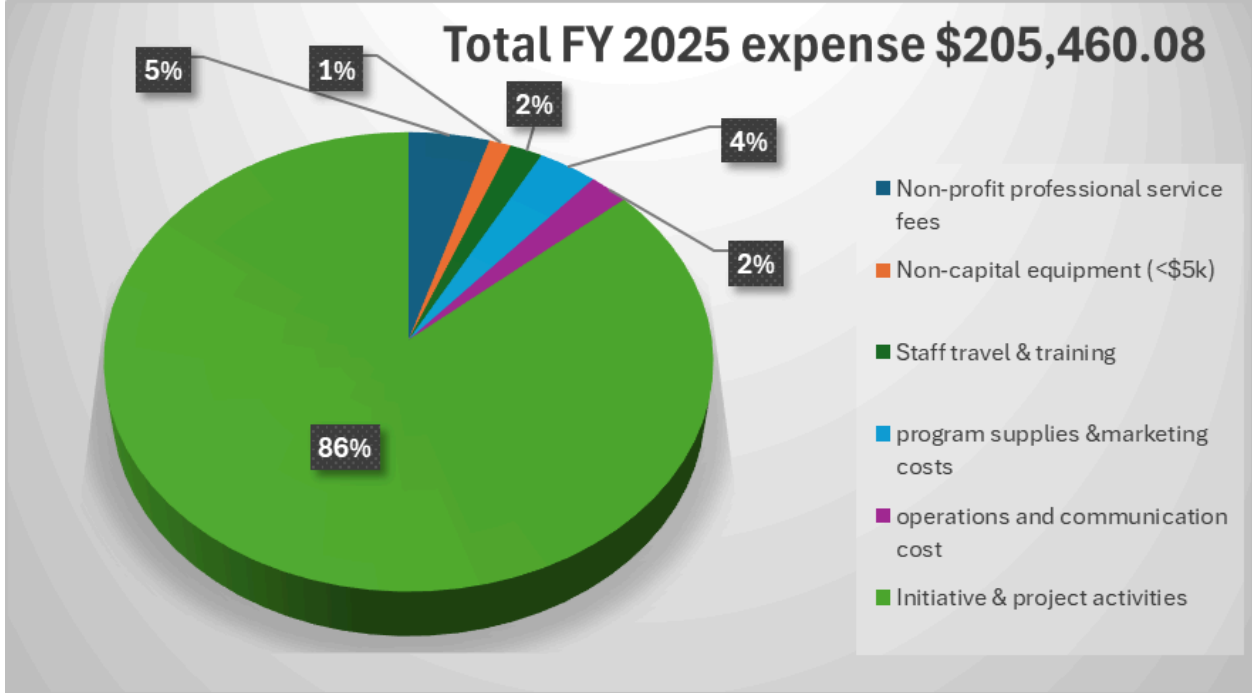
### Annual Expense Allocations

Throughout 2025, over 86% of the LF budget was allocated directly to initiative and project-related activities through staff salaries, up 3% from the prior year. Following that, 5% of the budget supported LF’s non-profit professional service fees for operational requirements. The additional Operations, program supplies, marketing, and communication utilized the remaining 8%, like website and domain maintenance, internet, communications, and software maintenance.

Lastly, the Program non-capital equipment (i.e., equipment less than \$5,000) utilized only approximately 1% total of the 2025 budget expense.



Graph 2. LF Expenses in 2025



**Join Our Story, Share our Journey**

Our niche is speaking for, and acting on behalf of, those that have no voice: All our Spirit Relatives, for the next Seven Generations. It just makes sense. If our work speaks to you and you'd like to join us on this journey for local, regional, and national advocacy for Indigenous conservation, food systems, and climate adaptation, then connect with us!





*Naqs spu?s k<sup>wu</sup> la ckrám*

*With one heart, we swim  
together*

