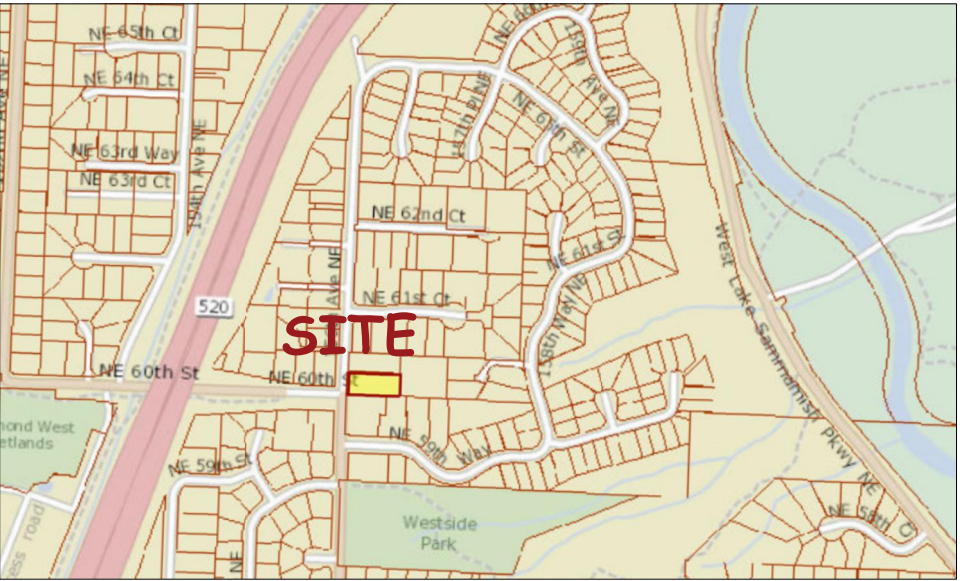


PIN
43530-0046
Pwner of record Robert s pearson
Site Address 6002 156TH AVE NE 98052
Redmond Washington
Legal Willowmoor Heights Add. S 84 ft of W 200 ft Lot
Reference Plat Doc# 1072883

Vertical Datum NAVD88
Bench Marks

City of Redmond
COR 9130 elev 261.50 2" diameter brass disc set in the southeast corner of concrete power vault in the northwest quadrant of the intersection of the NE 60th St. and 156th Ave. NE. Stamped "City of Redmond 9130, 2009"
COR 9116 elev 341.82Punch mark in 3" diameter brass disc in concrete base for a traffic signal pole in the northeast quadrant of the intersection of 156th Ave. NE and NE 40th Street. Stamped "City of Redmond BM 90

Existing Condition
Survey Map
WILLOWMOOR HEIGHTS ADDITION
PORTION OF SE 1/4 SECTION 11, TOWNSHIP 25 N.,
RANGE 5E., W.M.
KING COUNTY, WASHINGTON



Vicinity Map No Scale
Basis of bearings per plat Willowmoor Heights Addition
Property area 16,799+ sf

Reference is had to Title Resources Guaranty Company's , Title insurance commitment #RC--40211500 having an effective date Dec 31, 2018 8:00am all easements referenced in schedule B section 2 have been plotted(none)

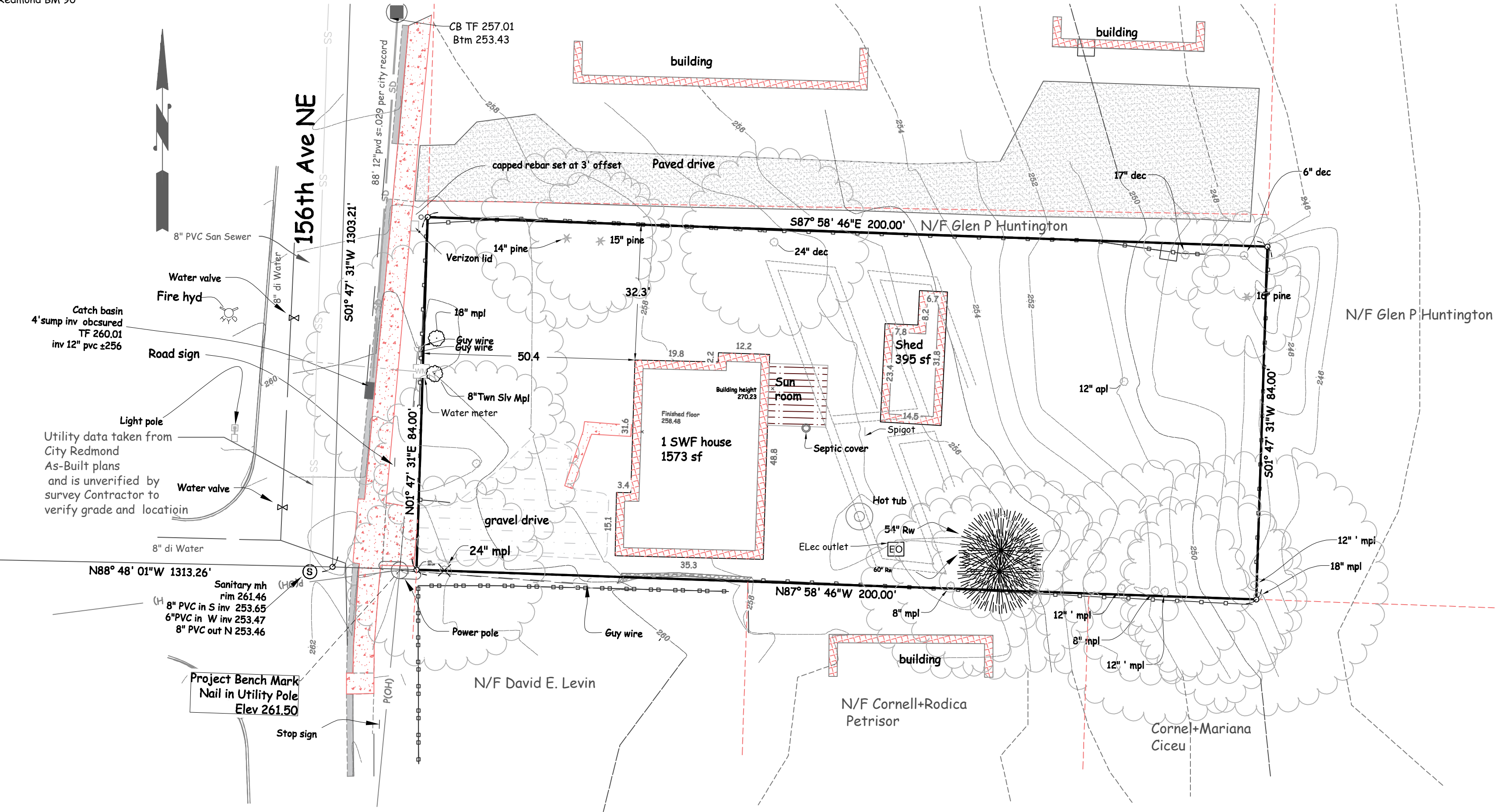
Utilities other than those shown may exist on this site. Only those utilities with evidence of their installation visible at ground surface are shown hereon

Topography by field location. 1 foot contour interval.

All distances are in feet (US Survey feet).

This is a field traverse survey. A Topcon 1-second electronic total station was used to measure the angular and distance relationships between the controlling monumentation as shown. Closure ratios of the traverse met or exceeded those specified in WAC 332-130-090. All instruments and equipment have been maintained in adjustment according to manufacturers' specifications.

This survey was prepared for the exclusive use of Satvir Randhawa .Rights to rely on or use this survey do not extend to any unnamed party without express re certification by the professional land surveyor whose seal appears hereon.



Horizontal Datum WA SPCS North
NAD 83 (91)

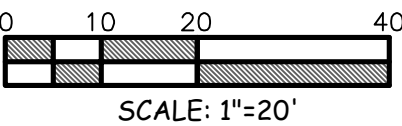
Reference monuments

GPS 90-3F3 AT 148th Ave NE , 500' South of NE 61 St monument is a nail with a punch mark set in the top of a 3.5" square conc. post inside a cast 8" case with Redmond mon written on the lid . alum block is bolted on the inside of the case with the inscription "City of Redmond horizontal control on the side and GPS90 3F3 on the top

GPS 90-3F4 AT 148th Ave NE , 400' North of NE 76 St monument is a 3" dia brass disc inscribed with city of Redmond public works,do not disturb stamped with GPS903F1 set in conc. base inside a cast 8" case with WScot mon written on the lid . alum block is bolted on the inside of the case with the inscription GPS903F1/red 3F3

LEGEND

- SURVEY MONUMENT (AS NOTED)
- SET REBAR AND CAP "CTC 45151"



AUDITOR'S CERTIFICATE
FILE FOR RECORD THIS _____ DAY OF _____
200__ AT THE REQUEST OF CHARLES T. CAMP PLS
COUNTY AUDITOR
SURVEY NO.
AUDITOR'S FILE NO.
VOL. _____ PAGE _____

SURVEYOR'S CERTIFICATE
THIS MAP CORRECTLY REPRESENTS A SURVEY MADE BY ME
UNDER MY DIRECTION IN CONFORMANCE WITH THE
REQUIREMENTS OF THE SURVEY RECORDING ACT AT
THE REQUEST OF SATYIR IN Dec. 2018.
CHARLES T. CAMP, PLS
WASHINGTON REGISTRATION NUMBER 45151

Camp Land Surveyors PLLC
1137 Naval Ave
Bremerton Washington 98312
701.339.1508
DRAWN BY: TVW
DATE: 12/26/2018 ,Rev April19 desc
CHECKED BY: CTC
JOB NO: 19-002

SITUATE AT
SE 1/4, SEC.11, TWP. 25 N.,
RGE. 5E., W.M.

SHT
1
OF
1