



Audit Friction. Map Discipline. [Blueprint](#) Excellence.



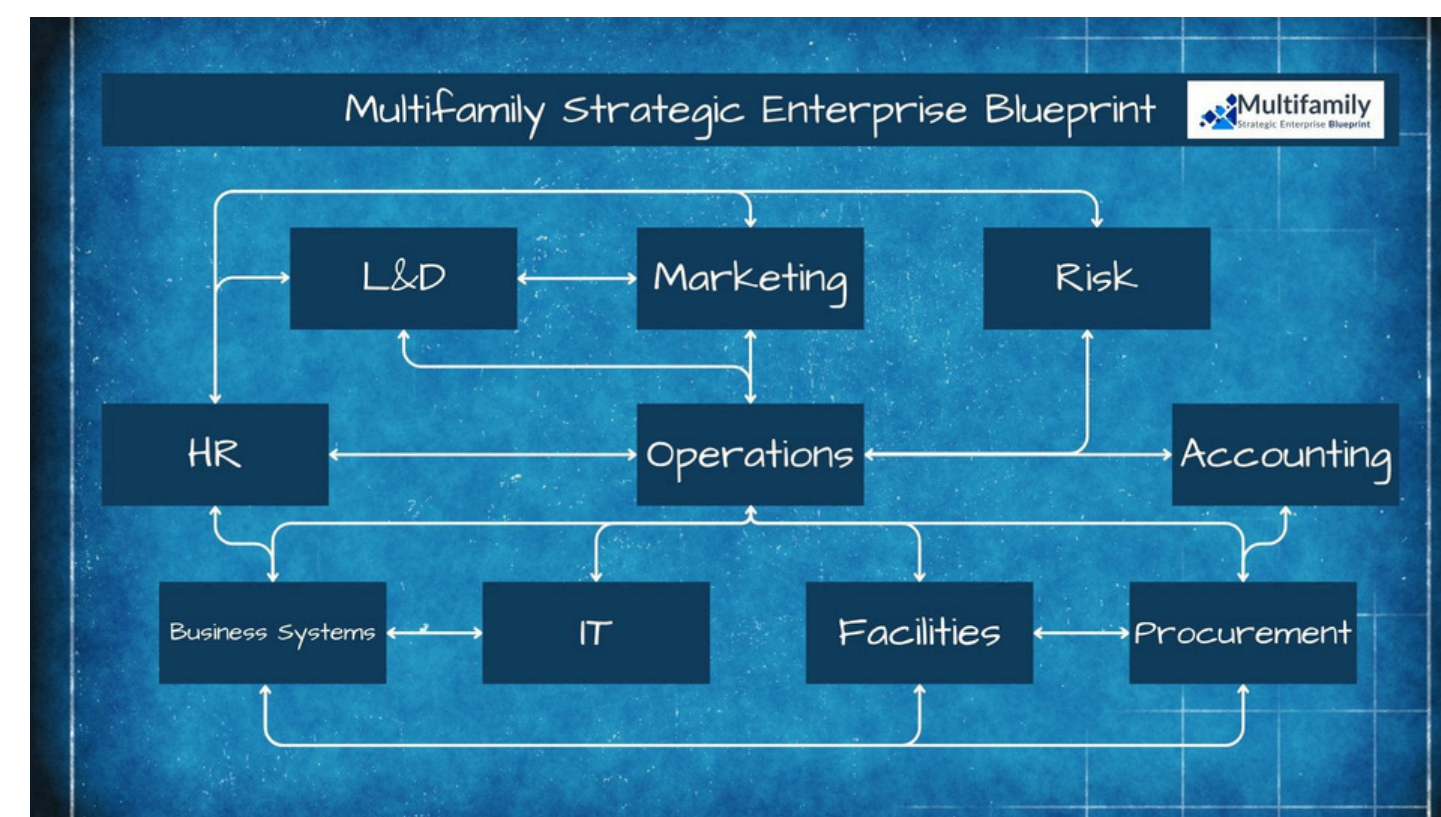
Friction is the silent ‘performance tax’ that erodes excellence. Everyone knows it’s there; few have the **blueprint** to remove it.

Gary Gregory, Founder

FRICTION is an Operational Tax

The Cost of Inefficiency

In the multifamily industry, **friction** is a silent performance tax on your NOI. It manifests as manual workarounds, department silos, and fragmented data across teams. When these obstacles are left unmapped, they become part of your "Operational DNA," leading to stagnant growth and burnedout onsite teams.



The Mapping Framework

Transforming the Current State into a Future State Blueprint

Audit Friction	Map Discipline
<p>We dive deep into current workflows to expose specific pain points hiding in department silos. By identifying where the hurdles live, we can begin to dismantle them.</p>	<p>Designing intentional, repeatable workflows that align your "Operational DNA" with long-term goals. We ensure every department moves in the same direction.</p>

Blueprint Excellence

TMX	OEX	CSX	BDX
<p>Team Member Experience: Empower your greatest asset by identifying and eliminating the hidden hurdles in their daily professional journey.</p>	<p>Operational Excellence: Transform your company's "Operational DNA" into a frictionless engine for growth.</p>	<p>Consumer Service Experience: Create "Superfans" of your communities by mastering every touchpoint of the resident lifecycle.</p>	<p>Business Development Experience: Turn operational efficiency into institutional equity through ancillary revenue audits.</p>

Current State vs **Blueprint State**

Operational Area	Current State (Friction)	Blueprint State (Excellence)
Decision Making	Reactive and Firefighting	Proactive and Intentional
Departmental Connection	Siloed and Hidden	Aligned and Integrated
Standardization	“Tribal Knowledge” Dependent	Systematically Disciplined
Scalability	Fragile and Person-Reliant	Robust and Process Powered



Gary Gregory is a seasoned Multifamily Operations Executive and the visionary founder behind the Multifamily Strategic Enterprise Blueprint (MF SEB). With over 25 years of experience leading high-performance teams and portfolios, he specializes in identifying the systemic "friction" that erodes institutional value and team culture. Inspired by his father's background in civil engineering, Gary approaches organizational health through the lens of an architect, focusing on precision, discipline, and the structural alignment of people and platforms.

MultifamilySEB.com

