



November 21, 2022

To Friends of Chosewood Park,

Trees Atlanta proposes the following total pricing for the mitigation and removal of kudzu throughout Chosewood Park. Please refer to the maps at the end of this document which show the current density in each zone.

Pricing includes removal of climbing and groundcover kudzu via manual and chemical methods. Trees Atlanta recommends 3 treatments of kudzu per growing season for 5 consecutive years to achieve nuisance level presence of kudzu. Pricing is outlined in the following table which is broken into the yearly cost per zone based on the current density. The total cost for treatment of kudzu in Chosewood Park is \$49,273.36.

	Zone	Year 1	Year 2	Year 3	Year 4	Year 5	TOTAL
Kudzu Removal	2	\$1,867.10	\$599.40	\$228.10	\$114.05	\$57.02	\$2,865.67
	13	\$1,725.70	\$704.59	\$318.38	\$159.19	\$79.60	\$2,987.46
	15	\$5,167.18	\$2,089.67	\$939.00	\$469.50	\$234.75	\$8,900.09
	18	\$235.35	\$96.51	\$43.72	\$21.86	\$10.93	\$408.37
	21	\$1,792.51	\$894.24	\$446.69	\$223.34	\$111.67	\$3,468.46
	22	\$3,211.20	\$1,479.60	\$712.80	\$356.40	\$178.20	\$5,938.20
	23	\$358.78	\$179.39	\$89.69	\$44.85	\$22.42	\$695.13
	24	\$2,973.72	\$1,207.14	\$543.63	\$271.81	\$135.91	\$5,132.20
	25	\$4,077.79	\$1,769.26	\$826.85	\$413.42	\$206.71	\$7,294.03
	26	\$3,754.48	\$1,530.49	\$690.94	\$345.47	\$172.74	\$6,494.12
	12 - OFF PROPERTY	\$2,626.91	\$1,313.45	\$656.73	\$328.36	\$164.18	\$5,089.63
TOTAL		\$27,790.72	\$11,863.74	\$5,496.52	\$2,748.26	\$1,374.13	\$49,273.36

In order to relieve up front cost, Trees Atlanta proposes initially focusing on zones in which professional kudzu control has been performed in the past and then moving through other zones as the budget allows. This strategy will increase the amount of time it takes to achieve nuisance levels of kudzu



but alleviate the financial burden of a 5-year timeline. Below is an example of how the maintenance schedule can be adjusted.

	Zone	Year 1	Year 2	Year 3	Year 4	Year 5	Year 6
Kudzu Removal	22	\$3,211.20	\$1,479.60	\$712.80	\$356.40	\$178.20	
	23	\$358.78	\$179.39	\$89.69	\$44.85	\$22.42	
	18		\$235.35	\$96.51	\$43.72	\$21.86	\$10.93
	21		\$1,792.51	\$894.24	\$446.69	\$223.34	\$111.67
	15			\$5,167.18	\$2,089.67	\$939.00	\$469.50
	13				\$1,725.70	\$704.59	\$318.38
	24					\$2,973.72	\$1,207.14
	25						\$4,077.79
	26						
	2						
	12 - OFF PROPERTY						
	TOTAL	\$3,569.98	\$3,686.85	\$6,960.42	\$4,707.02	\$5,063.13	\$6,195.41

	Zone	Year 7	Year 8	Year 9	Year 10	Year 11	Year 12	TOTAL
Kudzu Removal	22							\$5,938.20
	23							\$695.13
	18							\$408.37
	21							\$3,468.46
	15	\$234.75						\$8,900.09
	13	\$159.19	\$79.60					\$2,987.46
	24	\$543.63	\$271.81	\$135.91				\$5,132.20
	25	\$1,769.26	\$826.85	\$413.42	\$206.71			\$7,294.03
	26	\$3,754.48	\$1,530.49	\$690.94	\$345.47	\$172.74		\$6,494.12
	2		\$1,867.10	\$599.40	\$228.10	\$114.05	\$57.02	\$2,865.67
	12 - OFF PROPERTY		\$2,626.91	\$1,313.45	\$656.73	\$328.36	\$164.18	\$5,089.63
	TOTAL	\$6,461.31	\$7,202.76	\$3,153.12	\$1,437.00	\$615.15	\$221.21	\$49,273.36

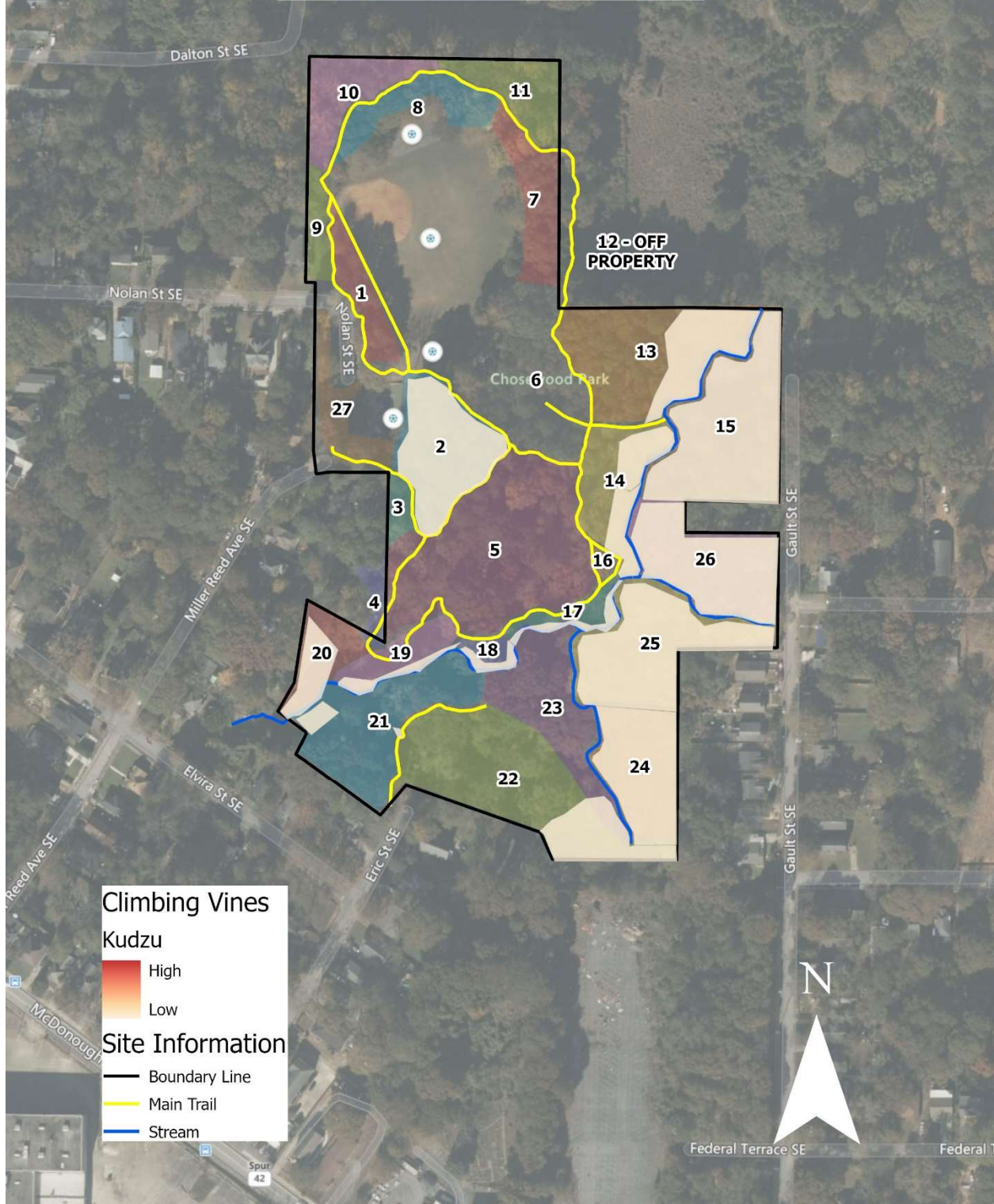
Once treatment is complete in a zone, some amount of follow up work is required to keep the kudzu at nuisance level. This pricing does not reflect any follow up maintenance.

Emily Roth

Forest Restoration Coordinator

eroth@treesatlanta.org

Chosewood Park Climbing Kudzu



Chosewood Park Groundlayer Kudzu

