

All-State Practice Packet 2019, Etude no. 1

Dr. Paul Garza

D Major



G Major



D Major Scale and Arpeggio



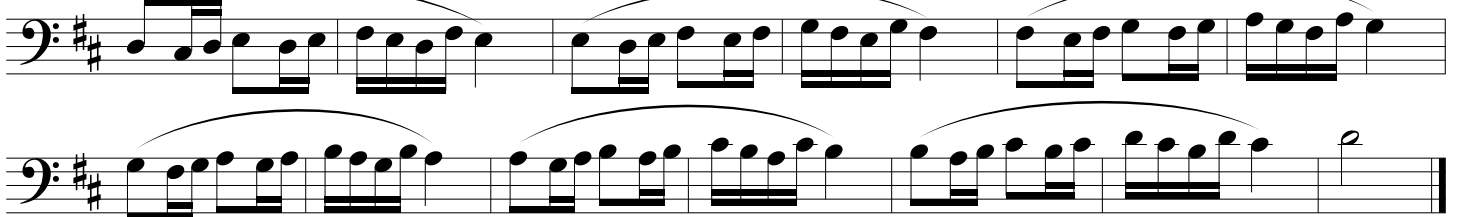
D Major Scale in Thirds



Slide Technique



Pattern



All-State Practice Packet 2019, Etude no. 1

G Major Scale and Arpeggio

Musical notation for the G Major Scale and Arpeggio. The piece is written in bass clef with a key signature of one sharp (F#). The first staff contains a G major scale starting on G2, moving up and then down. The second staff contains an arpeggiated G major triad (G2, B2, D3) repeated across the staff.

High Range

Musical notation for the High Range exercise. The piece is written in bass clef with a key signature of one sharp (F#). The notation features a series of sixteenth-note runs, each spanning an octave and a half, with slurs indicating the continuous nature of the runs. The exercise is designed to develop finger dexterity and range in the lower register.

All-State Practice Packet 2019, Etude no. 2

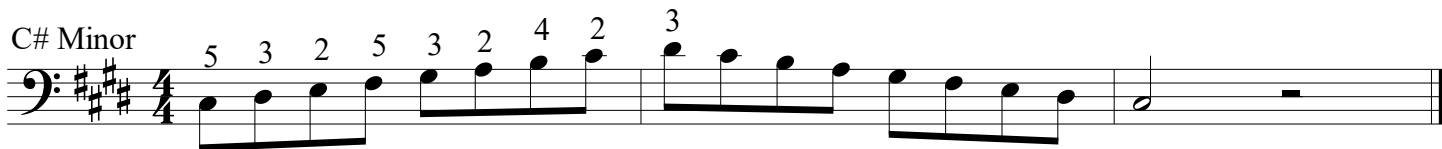
Dr. Paul Garza

E Major



Musical notation for E Major scale in bass clef, 4/4 time signature. The scale consists of eight eighth notes: E, F#, G#, A, B, C#, D, E.

C# Minor



Musical notation for C# Minor scale in bass clef, 4/4 time signature. The scale consists of eight eighth notes: C#, D, E, F#, G, A, B, C#. Fingering numbers are indicated above the notes: 5, 3, 2, 5, 3, 2, 4, 2, 3.

C# Natural Minor



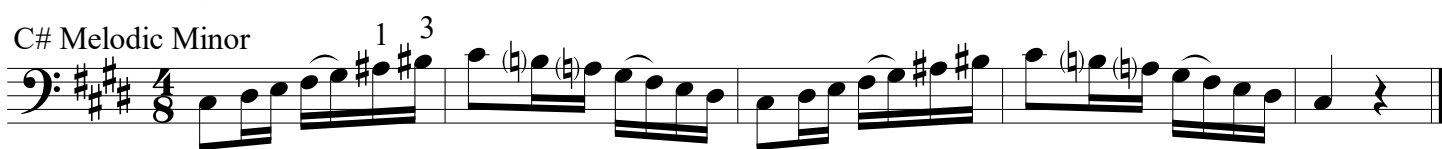
Musical notation for C# Natural Minor scale in bass clef, 8/8 time signature. The scale consists of eight eighth notes: C#, D, E, F, G, A, B, C#.

C# Harmonic Minor



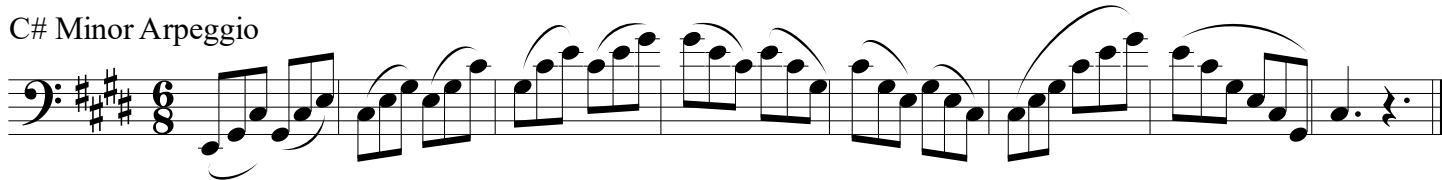
Musical notation for C# Harmonic Minor scale in bass clef, 8/8 time signature. The scale consists of eighth notes: C#, D, E, F#, G, A, B, C#. A triplet of three notes (F#, G, A) is indicated with a '3' above it.

C# Melodic Minor



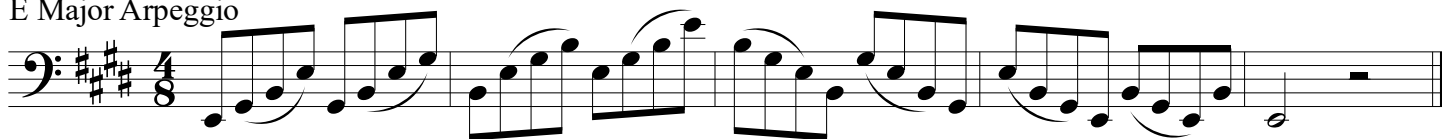
Musical notation for C# Melodic Minor scale in bass clef, 8/8 time signature. The scale consists of eighth notes: C#, D, E, F, G, A, B, C#. Fingering numbers 1 and 3 are indicated above the first and third notes. Flats are shown below the F and C notes.

C# Minor Arpeggio



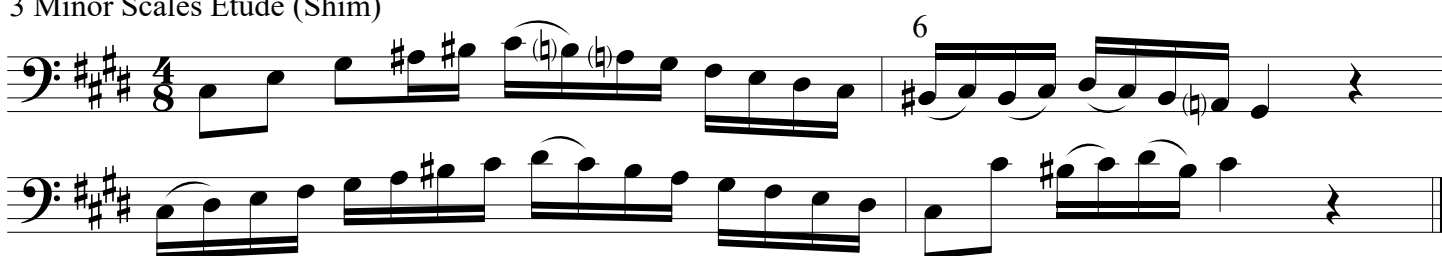
Musical notation for C# Minor Arpeggio in bass clef, 6/8 time signature. The arpeggio consists of eighth notes: C#, E, G, B, A, F#, G, E, C#.

E Major Arpeggio



Musical notation for E Major Arpeggio in bass clef, 8/8 time signature. The arpeggio consists of eighth notes: E, G#, B, C#, A, G, F#, E.

3 Minor Scales Etude (Shim)



Musical notation for 3 Minor Scales Etude (Shim) in bass clef, 4/8 time signature. The etude consists of eighth notes: C#, D, E, F#, G, A, B, C#. A triplet of six notes (F#, G, A, B, C#, D) is indicated with a '6' above it.

All-State Practice Packet 2019, Etude no. 2

Extended Arpeggio

Musical notation for the 'Extended Arpeggio' exercise. It is written in bass clef, key of D major (three sharps), and 6/8 time. The piece begins with a treble clef and a key signature change to D major. The notation features a long, sweeping arpeggiated line that spans across several measures, with a final dotted quarter note and a half rest.

Slide Technique, Melodic Minor

Musical notation for the 'Slide Technique, Melodic Minor' exercise. It is written in bass clef, key of D major (three sharps), and 6/8 time. The exercise consists of a series of eighth-note patterns with slurs and accents, demonstrating melodic minor scale techniques. The key signature changes to D minor (two sharps) for the latter half of the piece.

Selected Patterns

Musical notation for the 'Selected Patterns' exercise. It is written in bass clef, key of D major (three sharps), and 6/8 time. The exercise is divided into four measures by double bar lines, each containing specific arpeggiated patterns with slurs and accents.

All-State Practice Packet 2019, Etude no. 3

Dr. Paul Garza

Bb Major



Musical notation for Bb Major scale in bass clef, 4/4 time signature. The scale consists of eight notes: Bb, C, D, Eb, F, G, Ab, and Bb.

G Minor



Musical notation for G Minor scale in bass clef, 4/4 time signature. The scale consists of eight notes: G, Ab, Bb, C, D, Eb, F, and G.

G Natural Minor



Musical notation for G Natural Minor scale in bass clef, 8/8 time signature. The scale consists of eight notes: G, Ab, Bb, C, D, Eb, F, and G.

G Harmonic Minor



Musical notation for G Harmonic Minor scale in bass clef, 8/8 time signature. The scale consists of eight notes: G, Ab, Bb, C, D, Eb, F#, and G.

G Melodic Minor



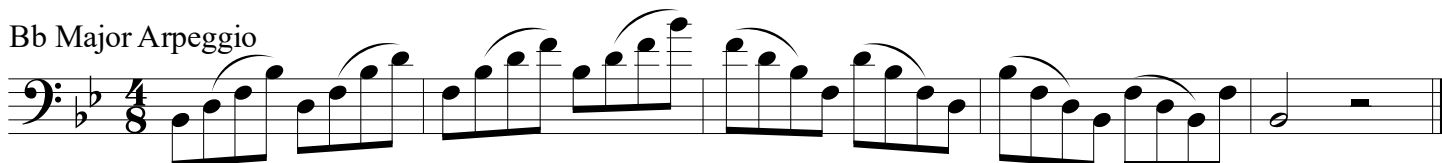
Musical notation for G Melodic Minor scale in bass clef, 8/8 time signature. The scale consists of eight notes: G, Ab, Bb, C, D, Eb, F#, and G. Fingerings (1) and (2) are indicated for the Bb and Eb notes.

G Minor Arpeggio



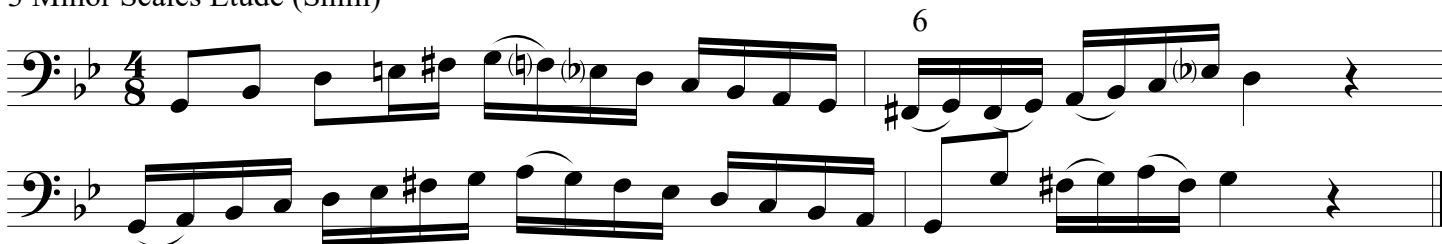
Musical notation for G Minor Arpeggio in bass clef, 6/8 time signature. The arpeggio consists of the notes G, Bb, and D, repeated in a rhythmic pattern.

Bb Major Arpeggio



Musical notation for Bb Major Arpeggio in bass clef, 8/8 time signature. The arpeggio consists of the notes Bb, D, and F, repeated in a rhythmic pattern.

3 Minor Scales Etude (Shim)



Musical notation for 3 Minor Scales Etude (Shim) in bass clef, 4/8 time signature. The etude consists of three minor scales: G Minor, Bb Minor, and C Minor. The G Minor scale is shown with fingerings (1) and (2) for the Bb and Eb notes. The Bb Minor scale is shown with a sharp sign for the F# note. The C Minor scale is shown with a flat sign for the Bb note. A measure number '6' is indicated above the second staff.

All-State Practice Packet 2019, Etude no. 3

Articulation

Rhythm

Continue with etude...