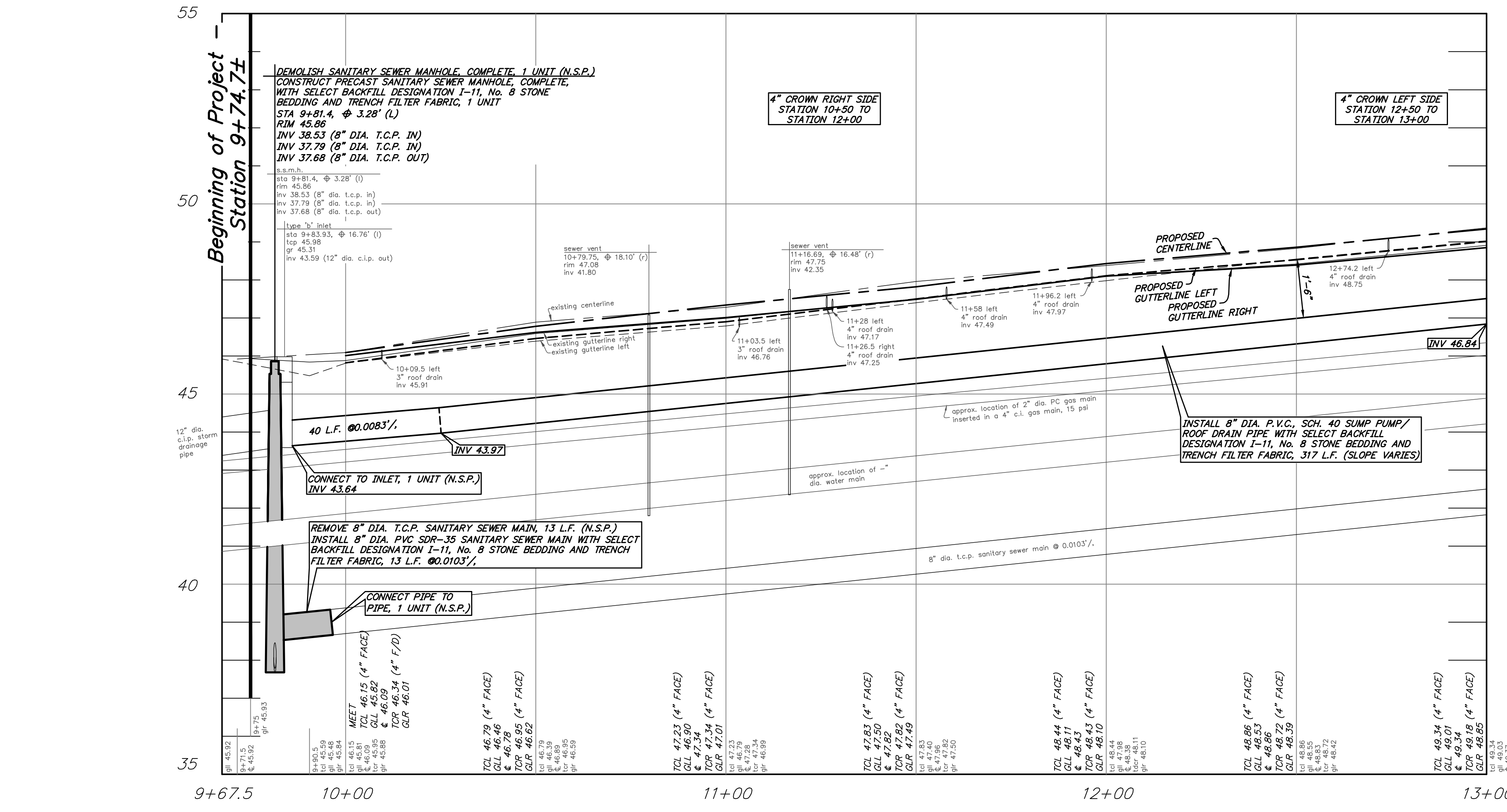


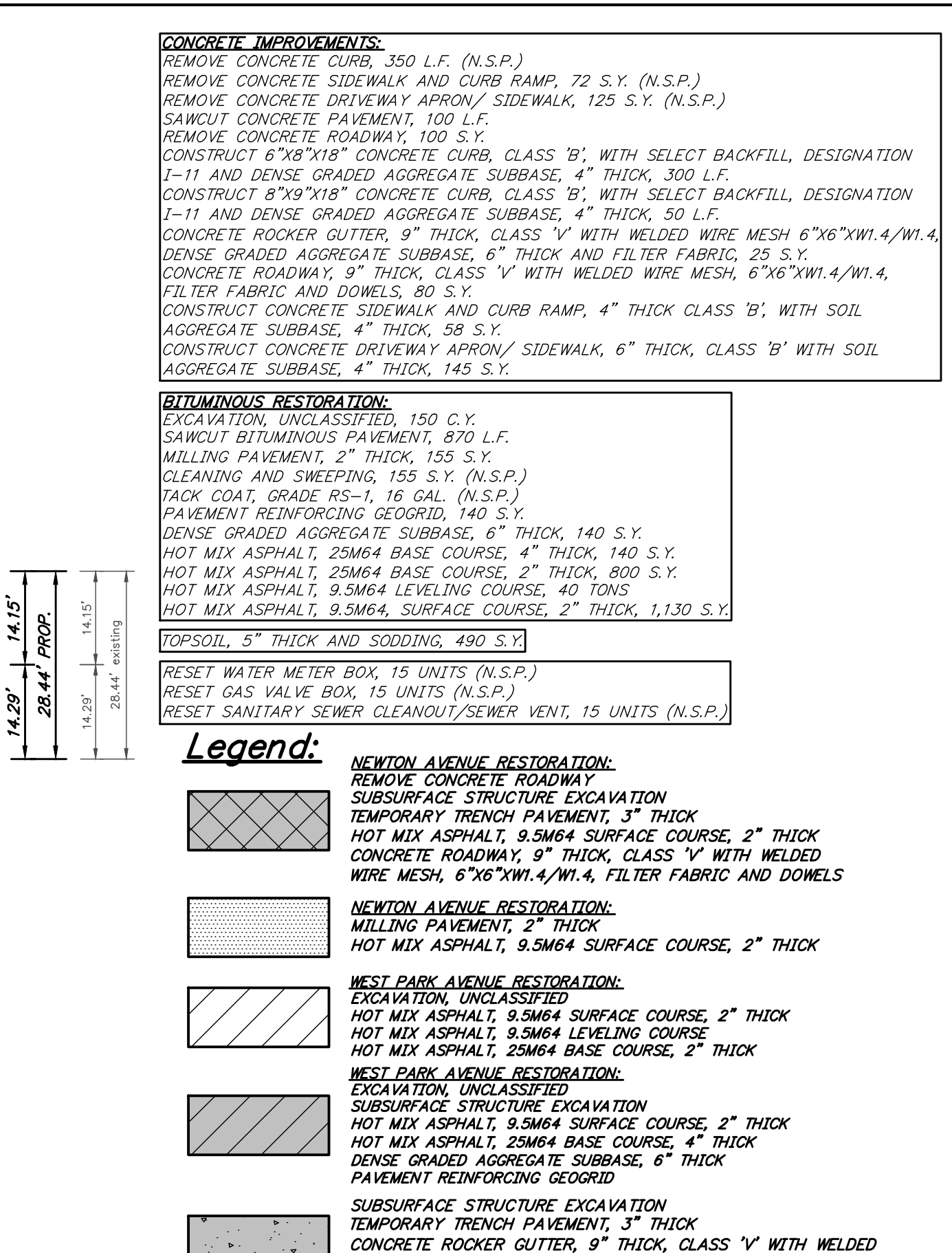
Plan: Base Bid: West Park Avenue  
scale: 1" = 20'

SEE SHEET No. 7 OF 12 FOR INTERSECTION GRADING DETAILS FOR NEWTON AVENUE (CR 743) AND WEST PARK AVENUE



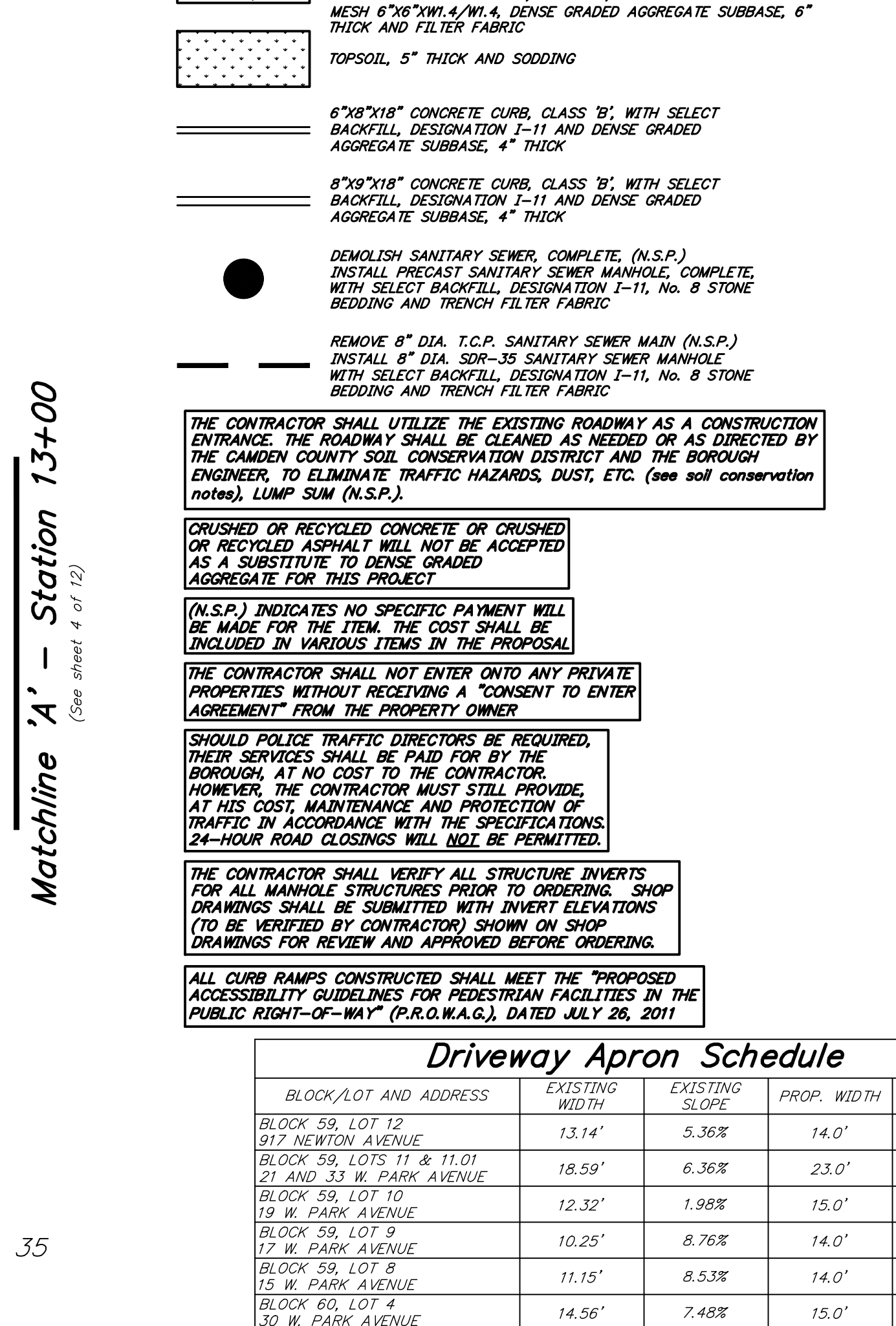
Profile: W. Park Avenue  
scale: horizontal 1 inch = 20 feet  
vertical 1 inch = 2 feet

CONSTRUCTION AND MATERIALS SHALL CONFORM TO THE DEPARTMENT'S STANDARD SPECIFICATIONS FOR ROAD AND BRIDGE CONSTRUCTION, 2019 EDITION, WHICH IS INCORPORATED HEREIN BY REFERENCE, AS AMENDED AND SUPPLEMENTED, AND THE DEPARTMENT'S SUPPLEMENTARY SPECIFICATIONS FOR STATE AID PROJECTS, 2019 EDITION, WHICH IS INCORPORATED HEREIN BY REFERENCE, AS AMENDED AND SUPPLEMENTED. STANDARD CONSTRUCTION DETAILS SHALL CONFORM TO THE LATEST REQUIREMENTS OF THE DEPARTMENT OF TRANSPORTATION. THE NEW JERSEY DEPARTMENT OF TRANSPORTATION "STANDARD ROADWAY CONSTRUCTION/ TRAFFIC CONTROL/ BRIDGE CONSTRUCTION DETAILS" BOOKLET DATED 2016 AND "ELECTRICAL BUREAU STANDARD DETAILS, 2007" AND ALL BASELINE DOCUMENT CHANGES MADE TO THESE CONSTRUCTION DETAILS, SHALL GOVERN, EXCEPT FOR THOSE DETAILS CONTAINED HEREIN. PARTIALLY FUNDED THROUGH NEW JERSEY DEPARTMENT OF TRANSPORTATION FY2020.



Matchline 'A' - Station 13+00  
(See sheet 4 of 12)

SEE SHEET No. 7 OF 12 FOR INTERSECTION GRADING DETAILS FOR NEWTON AVENUE (CR 743) AND WEST PARK AVENUE



Matchline 'A' - Station 13+00  
(See sheet 4 of 12)

CONTRACTOR SHALL UTILIZE THE EXISTING ROADWAY AS A CONSTRUCTION ENTRANCE. THE ROADWAY SHALL BE CLEANED AS NEEDED OR AS DIRECTED BY THE CAMDEN COUNTY SOIL CONSERVATION DISTRICT AND THE BOROUGH ENGINEER, TO ELIMINATE TRAFFIC HAZARDS, DUST, ETC. (SEE SOIL CONSERVATION NOTES), LUMP SUM (N.S.P.).

CRUSHED OR RECYCLED CONCRETE OR CRUSHED OR RECYCLED ASPHALT WILL NOT BE ACCEPTED AS A SUBSTITUTE TO DENSE GRADED AGGREGATE FOR THIS PROJECT.

(N.S.P.) INDICATES NO SPECIFIC PAYMENT WILL BE MADE FOR THE ITEM. THE COST SHALL BE INCLUDED IN VARIOUS ITEMS IN THE PROPOSAL.

THE CONTRACTOR SHALL NOT ENTER ONTO ANY PRIVATE PROPERTIES WITHOUT RECEIVING A "CONSENT TO ENTER AGREEMENT" FROM THE PROPERTY OWNER.

SHOULD POLICE TRAFFIC DIRECTORS BE REQUIRED, THEIR SERVICES SHALL BE PAID FOR BY THE BOROUGH, AT NO COST TO THE CONTRACTOR. HOWEVER, THE CONTRACTOR MUST STILL PROVIDE, AT HIS COST, MAINTENANCE AND PROTECTION OF TRAFFIC IN ACCORDANCE WITH THE SPECIFICATIONS. 24-HOUR ROAD CLOSINGS WILL NOT BE PERMITTED.

THE CONTRACTOR SHALL VERIFY ALL STRUCTURE INVERTS FOR ALL MANHOLE STRUCTURES PRIOR TO ORDERING SHOP DRAWINGS. SHOP DRAWINGS SHALL BE SUBMITTED WITH INVERT ELEVATIONS (TO BE VERIFIED BY CONTRACTOR) SHOWN ON SHOP DRAWINGS FOR REVIEW AND APPROVED BEFORE ORDERING.

ALL CURB RAMPS CONSTRUCTED SHALL MEET THE "PROPOSED ACCESSIBILITY GUIDELINES FOR PEDESTRIAN FACILITIES IN THE PUBLIC RIGHT-OF-WAY" (P.R.O.W.A.G.), DATED JULY 26, 2011

List of Quantities:  
Base Bid: Roadway Improvements to West Park Avenue from Newton Avenue (C.R. 743) to The White Horse Pike (N.J.S.H. 30)  
(PARTIALLY FUNDED THROUGH THE NJDOT MUNICIPAL AID PROGRAM, FY2020)

Payment Items:

ITEM NUMBER	DESCRIPTION	UNIT MEASURED	QUANTITY
1	EXCAVATION, UNCLASSIFIED	C.Y.	150
2	SAWCUT BITUMINOUS PAVEMENT	L.F.	870
3	SAWCUT CONCRETE PAVEMENT	L.F.	100
4	MILLING PAVEMENT, 2" THICK	S.Y.	155
5	REMOVE CONCRETE ROADWAY	S.Y.	100
6	PRECAST SANITARY SEWER MANHOLE, COMPLETE WITH SELECT BACKFILL DESIGNATION I-11, No. 8 STONE BEDDING AND TRENCH FILTER FABRIC	UNIT	1
7	8" DIA. P.V.C. SDR-35 SANITARY SEWER MAIN WITH SELECT BACKFILL DESIGNATION I-11, No. 8 STONE BEDDING AND TRENCH FILTER FABRIC	L.F.	39
8	SUMP PUMP/ROOF DRAIN LATERAL & CLEANOUT, COMPLETE, WITH SELECT BACKFILL DESIGNATION I-11, No. 8 STONE BEDDING AND TRENCH FILTER FABRIC	UNIT	15
9	8" DIA. P.V.C. SCH. 40 SUMP PUMP/ROOF DRAIN PIPE WITH SELECT BACKFILL DESIGNATION I-11, No. 8 STONE BEDDING AND TRENCH FILTER FABRIC	L.F.	317
10	SUMP LATERAL MARKER	UNIT	15
11	PARGE INLET STRUCTURE	UNIT	1
12	6"x8"x18" CONCRETE CURB, CLASS 'B' WITH SELECT BACKFILL, DESIGNATION I-11 AND DENSE GRADED AGGREGATE SUBBASE, 4" THICK, 300 L.F.	L.F.	300
13	6"x8"x18" CONCRETE CURB, CLASS 'B' WITH SELECT BACKFILL, DESIGNATION I-11 AND DENSE GRADED AGGREGATE SUBBASE, 4" THICK	L.F.	50
14	CONCRETE ROCKER GUTTER, 9" THICK, CLASS 'Y' WITH WELDED WIRE MESH, 6"x6"x1/4" W/1.4, DENSE GRADED AGGREGATE SUBBASE, 6" THICK AND FILTER FABRIC	S.Y.	25
15	CONCRETE SIDEWALK AND CURB RAMP, 4" THICK, CLASS 'B', WITH SOIL AGGREGATE SUBBASE, 4" THICK	S.Y.	58
16	CONCRETE DRIVEWAY APRON/ SIDEWALK, 6" THICK, CLASS 'B', WITH DENSE GRADED AGGREGATE SUBBASE, 4" THICK	S.Y.	145
17	DETECTABLE WARNING SURFACE	S.F.	16
18	PAVEMENT REINFORCING GEGRID	S.Y.	140
19	DENSE GRADED AGGREGATE SUBBASE, 6" THICK (ROADWAY/ WANA DRIVEWAY)	S.Y.	140
20	DENSE GRADED AGGREGATE SUBBASE, 4" THICK (DRIVEWAY RESTORATION)	S.Y.	0
21	HOT MIX ASPHALT, 25M64 BASE COURSE, 4" THICK (ROADWAY/ WANA DRIVEWAY)	S.Y.	140
22	HOT MIX ASPHALT, 25M64 BASE COURSE, 3" THICK (DRIVEWAY RESTORATION)	S.Y.	0
23	HOT MIX ASPHALT, 25M64 BASE COURSE, 2" THICK (ROADWAY RESTORATION)	S.Y.	800
24	HOT MIX ASPHALT, 9.5M64 LEVELING COURSE, 2" THICK	TONS	40
25	HOT MIX ASPHALT, 9.5M64 SURFACE COURSE, 2" THICK	S.Y.	1130
26	CONCRETE ROADWAY, 3" THICK, CLASS 'Y' WITH WELDED WIRE MESH, 6"x6"x1/4" W/1.4, FILTER FABRIC AND DOWELS	S.Y.	80
27	CLEAN AND SEAL JOINTS	L.F.	235
28	SAWCUT AND SEAL JOINTS	L.F.	235
29	TOPSOIL, 5" THICK AND SODDING	S.Y.	490
30	SIGN	UNIT	1
31	PAINT CURB YELLOW	L.F.	10
32	TRAFFIC STRIPES, 6" WIDE	L.F.	65
33	TRAFFIC STRIPES, 12" WIDE	L.F.	82
34	TRAFFIC STRIPES, DOUBLE YELLOW, 4" WIDE	L.F.	46
35	ASPHALT PRICE ADJUSTMENT	L.S.	L.S.
36	FUEL PRICE ADJUSTMENT	L.S.	L.S.

No Specific Payment Items:

ITEM NUMBER	DESCRIPTION	UNIT MEASURED	QUANTITY
A	SOIL EROSION AND SEDIMENT CONTROL	N.S.P.	N.S.P.
B	SUBSURFACE STRUCTURE EXCAVATION	N.S.P.	N.S.P.
C	DEMOLISH SANITARY SEWER MANHOLE, COMPLETE	UNIT	1
D	REMOVE 8" DIA. T.C.P. SANITARY SEWER MAIN	L.F.	39
E	CONNECT PIPE TO PIPE	UNIT	3
F	CONNECT PIPE TO INLET	UNIT	1
G	CLEANOUT PROTECTION BOX	UNIT	2
H	REMOVE CONCRETE CURB	L.F.	350
I	REMOVE CONCRETE SIDEWALK/ CURB RAMP/ CONCRETE AREA	S.Y.	72
J	REMOVE CONCRETE DRIVEWAY APRON/ SIDEWALK	S.Y.	125
K	REMOVE SIGN	UNIT	1
L	REPLACE INLET HEAD	UNIT	1
M	RESET RAILROAD TIE EDGING	L.F.	18
N	RESET SIGN	UNIT	2
O	RESET STEPPING STONES	UNIT	3
P	RESET WATER VALVE BOX	UNIT	0
Q	RESET WATER METER BOX	UNIT	15
R	RESET GAS VALVE BOX	UNIT	15
S	RESET SANITARY SEWER CLEANOUT/ SEWER VENT	UNIT	15
T	TRIM TREES	N.S.P.	N.S.P.
U	TEMPORARY TRENCH PAVEMENT, 3" THICK	S.Y.	220
V	CLEANING AND SWEEPING	S.Y.	155
W	TACK COAT, GRADE RS-1	GAL.	16
X	DEWATERING	N.S.P.	N.S.P.
Y	JOINT SEALER	L.F.	90
Z	CONCRETE SEALING	N.S.P.	N.S.P.
AA	WATERING	N.S.P.	N.S.P.
BB	MAINTENANCE AND PROTECTION OF VEHICULAR AND PEDESTRIAN TRAFFIC	N.S.P.	N.S.P.

Construction Plan and Profile, Base Bid  
Roadway Improvements to West Park Avenue from Newton Avenue (C.R. 743) to the White Horse Pike (N.J.S.H. 30)

Borough of Oaklyn  
Camden County, New Jersey

DATE: AUGUST 6, 2021 DRAWN BY: S. Hebbner CHKD. BY: SCALE: AS NOTED  
PROJECT No. 25-2480K0719 FIELD BOOK/PAGE: SHEET No. 3 OF 12

**GREGORY BLASE FUSCO**  
PROFESSIONAL ENGINEER  
NJPE No. 32853 PAPE No. 036608-E  
NJ PROFESSIONAL PLANNER No. 4076

KEY ENGINEERS, INC.  
80 S. WHITE HORSE PIKE  
BERLIN, NEW JERSEY 08009-2399  
PHONE: (856) 767-6111  
FAX: (856) 763-1091  
WWW.KEYENGINEERS.COM  
CERTIFICATE OF AUTHORIZATION #240A28041300

Driveway Apron Schedule

BLOCK/Lot and Address	EXISTING WIDTH	EXISTING SLOPE	PROP. WIDTH	PROP. SLOPE
BLOCK 59, LOT 12 917 NEWTON AVENUE	13.14'	5.36%	14.0'	4.32%
BLOCK 59, LOTS 11 & 11.01 21 AND 33 W. PARK AVENUE	18.59'	6.36%	23.0'	3.68%
BLOCK 59, LOT 10 19 W. PARK AVENUE	12.32'	1.98%	15.0'	1.33%
BLOCK 59, LOT 9 17 W. PARK AVENUE	10.25'	8.76%	14.0'	4.89%
BLOCK 59, LOT 8 15 W. PARK AVENUE	11.15'	8.53%	14.0'	6.58%
BLOCK 60, LOT 4 30 W. PARK AVENUE	14.56'	7.48%	15.0'	4.62%
BLOCK 60, LOT 5 & 6 26 & 28 W. PARK AVENUE	13.6'	7.11%	15.0'	5.6%
BLOCK 60, LOT 7 24 W. PARK AVENUE	12.06'	7.14%	14.0'	4.9%
BLOCK 60, LOT 8 22 W. PARK AVENUE	11.39'	7.04%	14.0'	9.38%

BENCHMARK REAR WITH CAP ELEV. 48.38

REPRODUCTION, ALTERATION AND AMENDMENT OF THIS PLAN SHALL BE PERFORMED ONLY BY KEY ENGINEERS, INC. AND SHALL BE UNDER THE ABSOLUTE DIRECTION OF THE LICENSED PROFESSIONAL WHOSE NAME AND SIGNATURE APPEARS HEREON.