

SURETUF CONTAINMENTS LTD.

SHOP & OFFICE BUILDING

COUNTY OF VERMILION RIVER, ALBERTA

LEGAL DESCRIPTION:
N 1/2 NE 1/4 SEC 4, TWP 48, RGE 1, W4M, COUNTY OF VERMILION RIVER

DRAWING INDEX

| | |
|------|---------------------------|
| A000 | COVER PAGE & SITE PLAN |
| A100 | FLOOR PLANS |
| A200 | ELEVATIONS |
| A300 | SECTIONS |
| A600 | SCHEDULES |
| S100 | FOUNDATION PLAN & DETAILS |

MECHANICAL

| | |
|-----|--------------------------------------|
| M-1 | FOUNDATION PLAN - MECHANICAL |
| M-2 | MAIN FLOOR PLAN - PLUMBING & HEATING |
| M-3 | MAIN FLOOR PLAN - HVAC |
| M-4 | 2ND FLOOR PLAN - PLUMBING & HEATING |
| M-5 | 2ND FLOOR PLAN - HVAC |
| M-6 | LEGENDS AND MECHANICAL DETAILS |
| M-7 | MECHANICAL SPECIFICATIONS |

ELECTRICAL

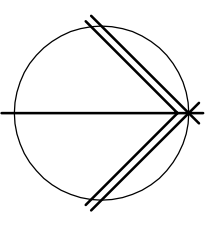
| | |
|-------|--|
| E-001 | SITE PLAN & DETAILS |
| E-100 | FLOOR PLAN & MEZZANINE PLAN - LIGHTING & DETAILS |
| E-101 | FLOOR PLAN & MEZZANINE PLAN - EMERGENCY, EXIT LIGHTING & DETAILS |
| E-102 | FLOOR PLAN & MEZZANINE PLAN - AUXILIARY & DETAILS |
| E-103 | FLOOR PLAN & MEZZANINE PLAN - MECHANICAL & DETAILS |
| E-200 | ELECTRICAL SPECIFICATIONS |

**APPLICATION FOR BUILDING PERMIT ONLY BE
MECHANICAL & ELECTRICAL DRAWINGS WILL BE
SUBMITTED WHEN AVAILABLE**

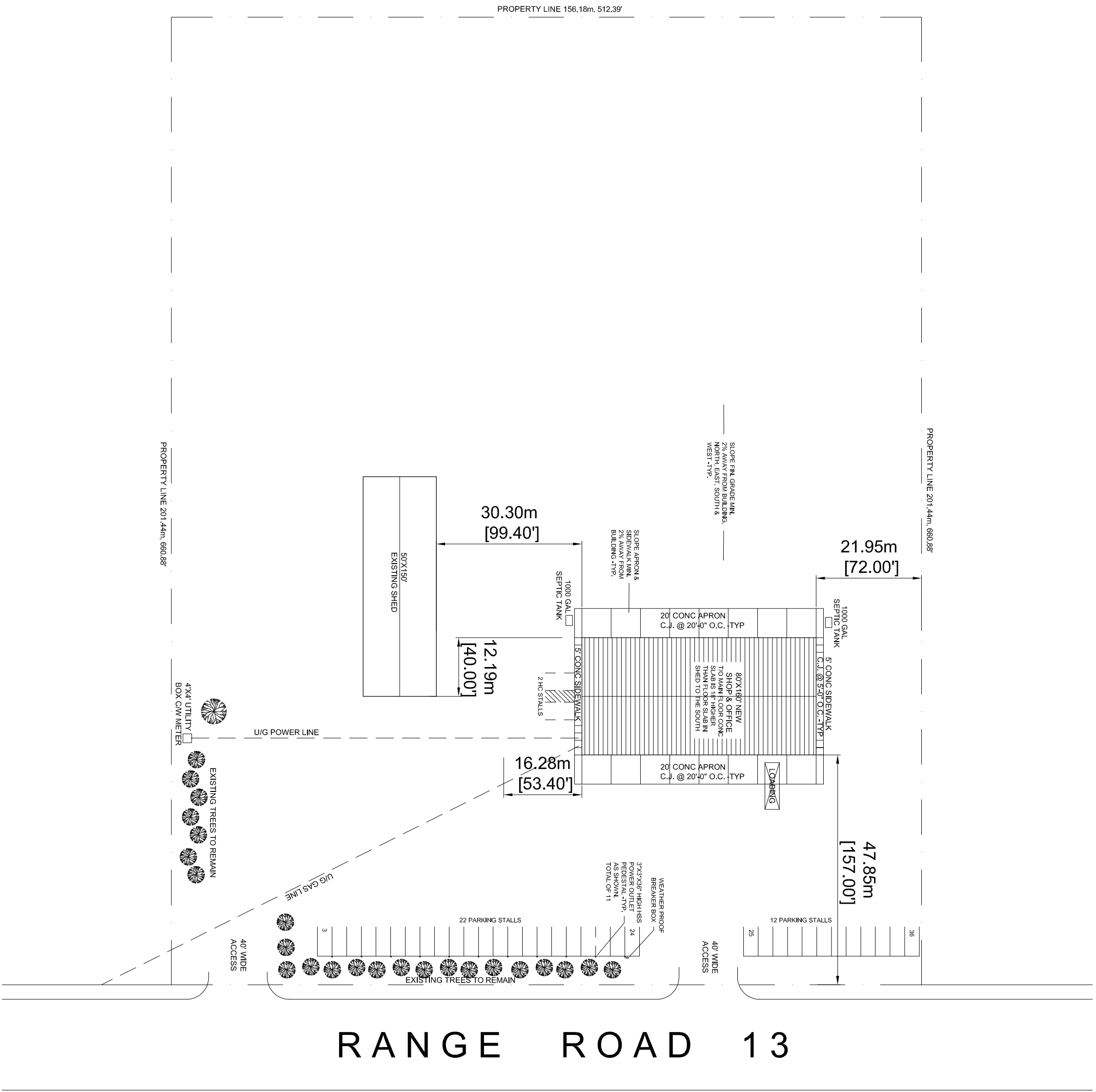
- BLDG. CODEBYLAW/INFO**
- ZONING: -338.64x230 sq. ft. (31'46" x 84' 0") 7.774 ACRES
- SITE AREA: -338.64x230 sq. ft. (31'46" x 84' 0") 7.774 ACRES
- BUILDING FOOTPRINT AREA: -10,440 sq. ft. (97'0" x 107'6")
- OFFICE AREA: -10,440 sq. ft. (97'0" x 107'6")
- SHOP AREA: -10,440 sq. ft. (97'0" x 107'6")
- SITE COVERAGE: -3.75%
- BUILDING HEIGHT: -25.37' (7.72m) AT BUILDING PEAK
- FRONT YARD: -151.00' (47.26m)
- REAR YARD: -280.46' (85.47m) SOUTH SIDE
- REAR YARD: -423.81' (129.23m)
- PARKING: -15 STALLS PER 100 SQ. METERS OF OFFICE AREA
- 25 STALLS PER 100 SQ. METERS OF SHOP AREA
- 15 STALLS REQUIRED FOR OFFICE AREA
- 10 STALLS REQUIRED FOR SHOP AREA
- 2 BARBER FREE STALLS PROVIDED
- 1 LOADING BAY PROVIDED.
- BLDG. USE & CLASSIFICATION: -3,2,2,69 ABC 2006, GROUP F2, UP TO 3 STOREYS
- BUILDING IS PARTIALLY 2-STORY IN BUILDING HEIGHT
- BUILDING AREA IS 180.16 SQ.M. (PARKING) STREET
- ROOF ASSEMBLY IS RATED 45min. IF OF COMBUSTIBLE CONSTRUCTION
- FLOOR ASSEMBLY SHALL BE FIRE SEPARATION WITH 45min FRR
- LOAD BEARING WALLS, COLUMNS AND ARCHES SUPPORTING OR BE NON-COMBUSTIBLE CONSTRUCTION
- FIRE RATINGS, ETC. REQUIRED:
- WALL SEPARATING SHOP & OFFICE AREAS IS RATED 2Hr
 - MECHANICAL ROOMS RATED 1Hr
 - FIRE ALARM SYSTEM IS NOT REQD. 3,2,4,1 NBC.
 - STANDPIPE & HOSE SYSTEM IS NOT REQD. 3,2,5,8 NBC.
 - FIRE FIGHTING WATER SUPPLY REQD. = 557,000 LITRES FROM A FIRE HYDRANT LOCATED NO LESS THAN 300' (90m) FROM BUILDING MAIN ENTRY (TO BE CONFIRMED).
- BUILDING CONSTRUCTION:
- FOUNDATION: CONCRETE PILES AND GRADE BEAMS
 - MAIN FLOOR: CONCRETE SLAB ON GRADE ON COMPACTED GRANULAR SUBGRADE
 - SECOND FLOOR: PRE-ENGINEERED STEEL BUILDING WITH PREFINISHED METAL CLADDING & INTERIOR LINER PANELS
 - OFFICE AREA: WOOD FRAME LOAD BEARING WALLS IN PRE-ENGINEERED STEEL BUILDING, GIBBS INTERIOR, AND PREFINISHED METAL CLADDING SYSTEMS.



EXISTING TREE



1 SITE PLAN
SCALE: 1/64" = 1'-0"



RANGE ROAD 13

| No. | DATE | REVISION | BY |
|-----|---------------|------------------------------|----|
| 3 | AUG 12, 2014 | ISSUED FOR REVIEW & APPROVED | TY |
| 2 | JULY 22, 2014 | ISSUED FOR REVIEW | TY |
| 1 | MAY 07, 2014 | ISSUED FOR REVIEW | TY |

LOT/OWNER: AB PH(780) 875-7550 FAX(780) 875-7662

THIS PLAN IS PROTECTED UNDER COPYRIGHT LAW, AND REPRODUCTION OF THE ILLUSTRATIONS OR WORKING DRAWINGS IS STRICTLY PROHIBITED. UNIVERSAL CONSULTING GROUP LTD. PERMITS THE PURCHASER OF THESE PLANS THE RIGHT TO CONSTRUCT ONLY ONE STRUCTURE AND THESE PLANS CANNOT BE RESOLD.

CLIENT: SURETUF CONTAINMENTS LTD.

PROJECT: 80'X160' SHOP & OFFICE BUILDING

DRAWING: SITE PLAN

SCALE: AS NOTED

DATE: 2014/04/29

FILE: C2014-0429

DRAWN: TY

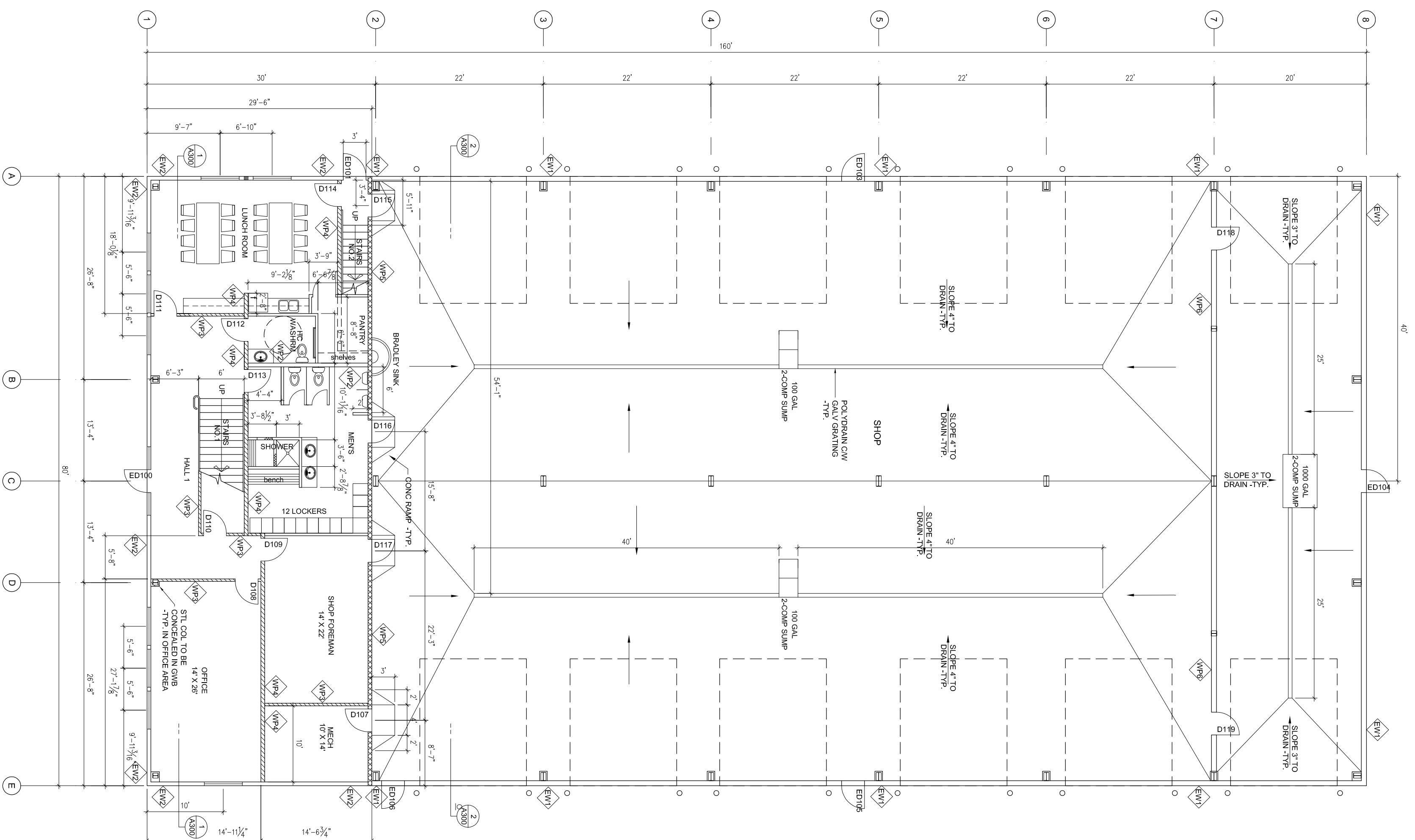
CHECKED:

DWG NO:

ISSUED FOR BUILDING PERMIT

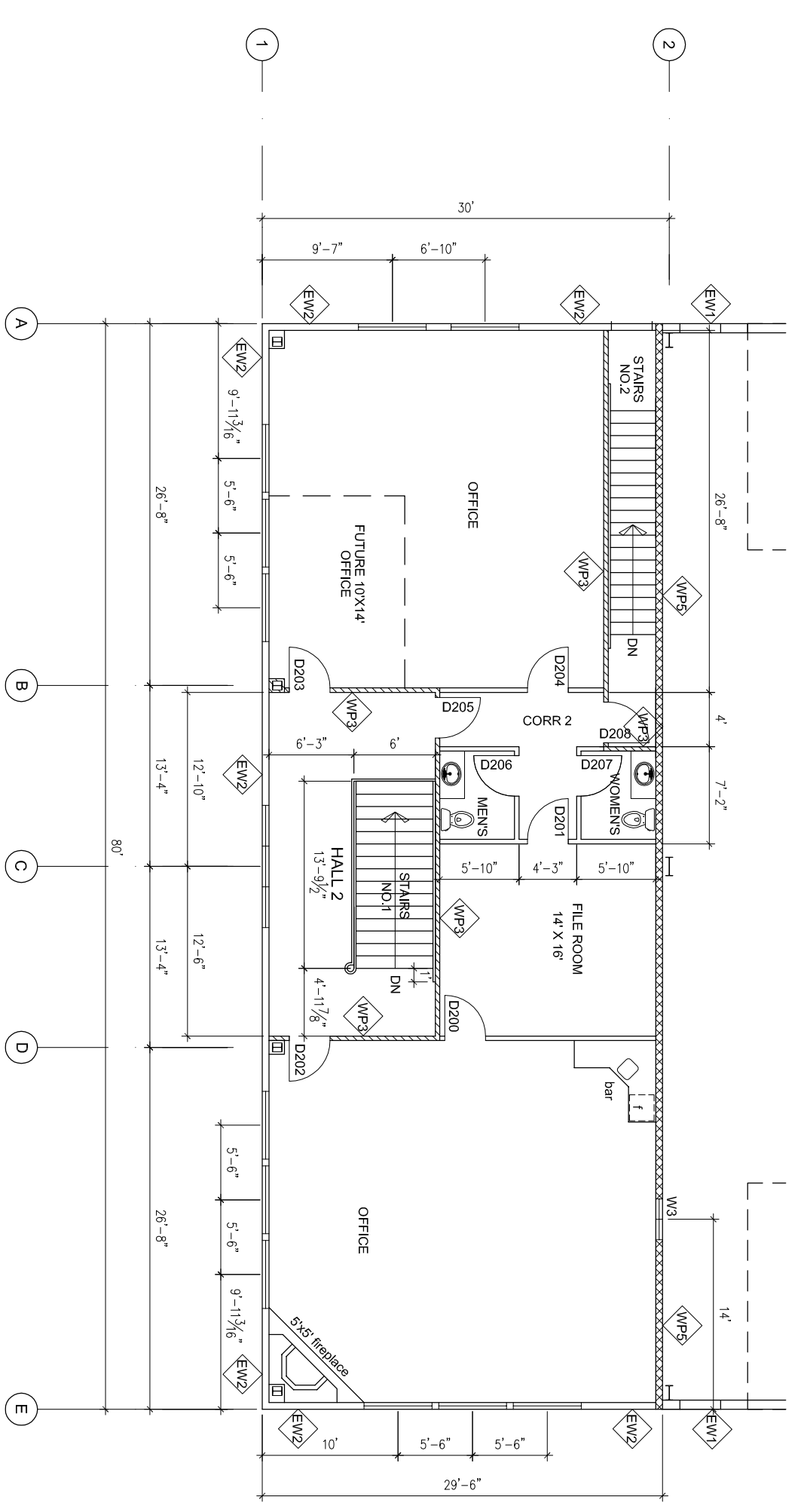
AUG 15, 2014

A000



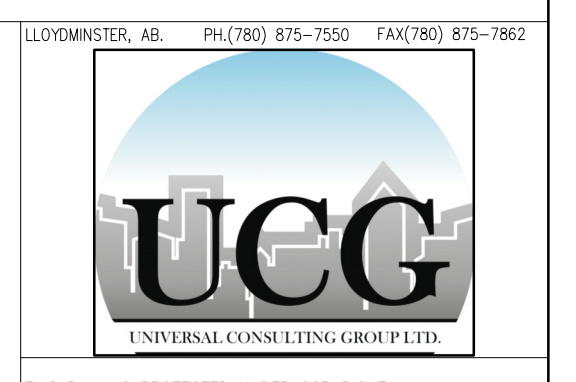
1 FLOOR PLAN
SCALE: 3/32" = 1'-0"

- WALL TYPES**
- EW1 - 1/2" GWB ON BS OF 2X4 STUDS @ 16" O.C. PARTITIONS ARE UNPAINTED & PAINTED
 - EW2 - 1/2" GWB ON BS OF 2X4 STUDS @ 16" O.C.
 - EW3 - 1/2" GWB ON BS OF 2X4 STUDS @ 16" O.C.
 - EW4 - 1/2" GWB ON BS OF 2X4 STUDS @ 16" O.C.
 - EW5 - 1/2" GWB ON BS OF 2X4 STUDS @ 16" O.C.
 - EW6 - 1/2" GWB ON BS OF 2X4 STUDS @ 16" O.C.
 - EW7 - 1/2" GWB ON BS OF 2X4 STUDS @ 16" O.C.
 - EW8 - 1/2" GWB ON BS OF 2X4 STUDS @ 16" O.C.
 - EW9 - 1/2" GWB ON BS OF 2X4 STUDS @ 16" O.C.
 - EW10 - 1/2" GWB ON BS OF 2X4 STUDS @ 16" O.C.
 - EW11 - 1/2" GWB ON BS OF 2X4 STUDS @ 16" O.C.
 - EW12 - 1/2" GWB ON BS OF 2X4 STUDS @ 16" O.C.
 - EW13 - 1/2" GWB ON BS OF 2X4 STUDS @ 16" O.C.
 - EW14 - 1/2" GWB ON BS OF 2X4 STUDS @ 16" O.C.
 - EW15 - 1/2" GWB ON BS OF 2X4 STUDS @ 16" O.C.
 - EW16 - 1/2" GWB ON BS OF 2X4 STUDS @ 16" O.C.
 - EW17 - 1/2" GWB ON BS OF 2X4 STUDS @ 16" O.C.
 - EW18 - 1/2" GWB ON BS OF 2X4 STUDS @ 16" O.C.
 - EW19 - 1/2" GWB ON BS OF 2X4 STUDS @ 16" O.C.
 - EW20 - 1/2" GWB ON BS OF 2X4 STUDS @ 16" O.C.
 - EW21 - 1/2" GWB ON BS OF 2X4 STUDS @ 16" O.C.
 - EW22 - 1/2" GWB ON BS OF 2X4 STUDS @ 16" O.C.
 - EW23 - 1/2" GWB ON BS OF 2X4 STUDS @ 16" O.C.
 - EW24 - 1/2" GWB ON BS OF 2X4 STUDS @ 16" O.C.
 - EW25 - 1/2" GWB ON BS OF 2X4 STUDS @ 16" O.C.
 - EW26 - 1/2" GWB ON BS OF 2X4 STUDS @ 16" O.C.
 - EW27 - 1/2" GWB ON BS OF 2X4 STUDS @ 16" O.C.
 - EW28 - 1/2" GWB ON BS OF 2X4 STUDS @ 16" O.C.
 - EW29 - 1/2" GWB ON BS OF 2X4 STUDS @ 16" O.C.
 - EW30 - 1/2" GWB ON BS OF 2X4 STUDS @ 16" O.C.
 - EW31 - 1/2" GWB ON BS OF 2X4 STUDS @ 16" O.C.
 - EW32 - 1/2" GWB ON BS OF 2X4 STUDS @ 16" O.C.
 - EW33 - 1/2" GWB ON BS OF 2X4 STUDS @ 16" O.C.
 - EW34 - 1/2" GWB ON BS OF 2X4 STUDS @ 16" O.C.
 - EW35 - 1/2" GWB ON BS OF 2X4 STUDS @ 16" O.C.
 - EW36 - 1/2" GWB ON BS OF 2X4 STUDS @ 16" O.C.
 - EW37 - 1/2" GWB ON BS OF 2X4 STUDS @ 16" O.C.
 - EW38 - 1/2" GWB ON BS OF 2X4 STUDS @ 16" O.C.
 - EW39 - 1/2" GWB ON BS OF 2X4 STUDS @ 16" O.C.
 - EW40 - 1/2" GWB ON BS OF 2X4 STUDS @ 16" O.C.
 - EW41 - 1/2" GWB ON BS OF 2X4 STUDS @ 16" O.C.
 - EW42 - 1/2" GWB ON BS OF 2X4 STUDS @ 16" O.C.
 - EW43 - 1/2" GWB ON BS OF 2X4 STUDS @ 16" O.C.
 - EW44 - 1/2" GWB ON BS OF 2X4 STUDS @ 16" O.C.
 - EW45 - 1/2" GWB ON BS OF 2X4 STUDS @ 16" O.C.
 - EW46 - 1/2" GWB ON BS OF 2X4 STUDS @ 16" O.C.
 - EW47 - 1/2" GWB ON BS OF 2X4 STUDS @ 16" O.C.
 - EW48 - 1/2" GWB ON BS OF 2X4 STUDS @ 16" O.C.
 - EW49 - 1/2" GWB ON BS OF 2X4 STUDS @ 16" O.C.
 - EW50 - 1/2" GWB ON BS OF 2X4 STUDS @ 16" O.C.
 - EW51 - 1/2" GWB ON BS OF 2X4 STUDS @ 16" O.C.
 - EW52 - 1/2" GWB ON BS OF 2X4 STUDS @ 16" O.C.
 - EW53 - 1/2" GWB ON BS OF 2X4 STUDS @ 16" O.C.
 - EW54 - 1/2" GWB ON BS OF 2X4 STUDS @ 16" O.C.
 - EW55 - 1/2" GWB ON BS OF 2X4 STUDS @ 16" O.C.
 - EW56 - 1/2" GWB ON BS OF 2X4 STUDS @ 16" O.C.
 - EW57 - 1/2" GWB ON BS OF 2X4 STUDS @ 16" O.C.
 - EW58 - 1/2" GWB ON BS OF 2X4 STUDS @ 16" O.C.
 - EW59 - 1/2" GWB ON BS OF 2X4 STUDS @ 16" O.C.
 - EW60 - 1/2" GWB ON BS OF 2X4 STUDS @ 16" O.C.
 - EW61 - 1/2" GWB ON BS OF 2X4 STUDS @ 16" O.C.
 - EW62 - 1/2" GWB ON BS OF 2X4 STUDS @ 16" O.C.
 - EW63 - 1/2" GWB ON BS OF 2X4 STUDS @ 16" O.C.
 - EW64 - 1/2" GWB ON BS OF 2X4 STUDS @ 16" O.C.
 - EW65 - 1/2" GWB ON BS OF 2X4 STUDS @ 16" O.C.
 - EW66 - 1/2" GWB ON BS OF 2X4 STUDS @ 16" O.C.
 - EW67 - 1/2" GWB ON BS OF 2X4 STUDS @ 16" O.C.
 - EW68 - 1/2" GWB ON BS OF 2X4 STUDS @ 16" O.C.
 - EW69 - 1/2" GWB ON BS OF 2X4 STUDS @ 16" O.C.
 - EW70 - 1/2" GWB ON BS OF 2X4 STUDS @ 16" O.C.
 - EW71 - 1/2" GWB ON BS OF 2X4 STUDS @ 16" O.C.
 - EW72 - 1/2" GWB ON BS OF 2X4 STUDS @ 16" O.C.
 - EW73 - 1/2" GWB ON BS OF 2X4 STUDS @ 16" O.C.
 - EW74 - 1/2" GWB ON BS OF 2X4 STUDS @ 16" O.C.
 - EW75 - 1/2" GWB ON BS OF 2X4 STUDS @ 16" O.C.
 - EW76 - 1/2" GWB ON BS OF 2X4 STUDS @ 16" O.C.
 - EW77 - 1/2" GWB ON BS OF 2X4 STUDS @ 16" O.C.
 - EW78 - 1/2" GWB ON BS OF 2X4 STUDS @ 16" O.C.
 - EW79 - 1/2" GWB ON BS OF 2X4 STUDS @ 16" O.C.
 - EW80 - 1/2" GWB ON BS OF 2X4 STUDS @ 16" O.C.
 - EW81 - 1/2" GWB ON BS OF 2X4 STUDS @ 16" O.C.
 - EW82 - 1/2" GWB ON BS OF 2X4 STUDS @ 16" O.C.
 - EW83 - 1/2" GWB ON BS OF 2X4 STUDS @ 16" O.C.
 - EW84 - 1/2" GWB ON BS OF 2X4 STUDS @ 16" O.C.
 - EW85 - 1/2" GWB ON BS OF 2X4 STUDS @ 16" O.C.
 - EW86 - 1/2" GWB ON BS OF 2X4 STUDS @ 16" O.C.
 - EW87 - 1/2" GWB ON BS OF 2X4 STUDS @ 16" O.C.
 - EW88 - 1/2" GWB ON BS OF 2X4 STUDS @ 16" O.C.
 - EW89 - 1/2" GWB ON BS OF 2X4 STUDS @ 16" O.C.
 - EW90 - 1/2" GWB ON BS OF 2X4 STUDS @ 16" O.C.
 - EW91 - 1/2" GWB ON BS OF 2X4 STUDS @ 16" O.C.
 - EW92 - 1/2" GWB ON BS OF 2X4 STUDS @ 16" O.C.
 - EW93 - 1/2" GWB ON BS OF 2X4 STUDS @ 16" O.C.
 - EW94 - 1/2" GWB ON BS OF 2X4 STUDS @ 16" O.C.
 - EW95 - 1/2" GWB ON BS OF 2X4 STUDS @ 16" O.C.
 - EW96 - 1/2" GWB ON BS OF 2X4 STUDS @ 16" O.C.
 - EW97 - 1/2" GWB ON BS OF 2X4 STUDS @ 16" O.C.
 - EW98 - 1/2" GWB ON BS OF 2X4 STUDS @ 16" O.C.
 - EW99 - 1/2" GWB ON BS OF 2X4 STUDS @ 16" O.C.
 - EW100 - 1/2" GWB ON BS OF 2X4 STUDS @ 16" O.C.



2nd FLOOR PLAN
SCALE: 3/32" = 1'-0"

| No. | DATE | REVISION | BY |
|-----|---------------|------------------------------|----|
| 3 | AUG 12, 2014 | ISSUED FOR REVIEW & APPROVED | TY |
| 2 | JULY 22, 2014 | ISSUED FOR REVIEW | TY |
| 1 | MAY 07, 2014 | ISSUED FOR REVIEW | TY |



THIS PLAN IS PROTECTED UNDER COPYRIGHT LAW, AND REPRODUCTION OF THE ILLUSTRATIONS OR WORKING DRAWINGS IS STRICTLY PROHIBITED. UNIVERSAL CONSULTING GROUP LTD. PERMITS THE PURCHASER OF THESE PLANS THE RIGHT TO CONSTRUCT ONLY ONE STRUCTURE AND THESE PLANS CANNOT BE RESOLD.

CLIENT: **SURETUF CONTAINMENTS LTD.**

PROJECT: 80'X160' SHOP & OFFICE BUILDING

DRAWING: FLOOR PLAN

SCALE: AS NOTED

DATE: 2014/04/29

FILE: C2014-0429

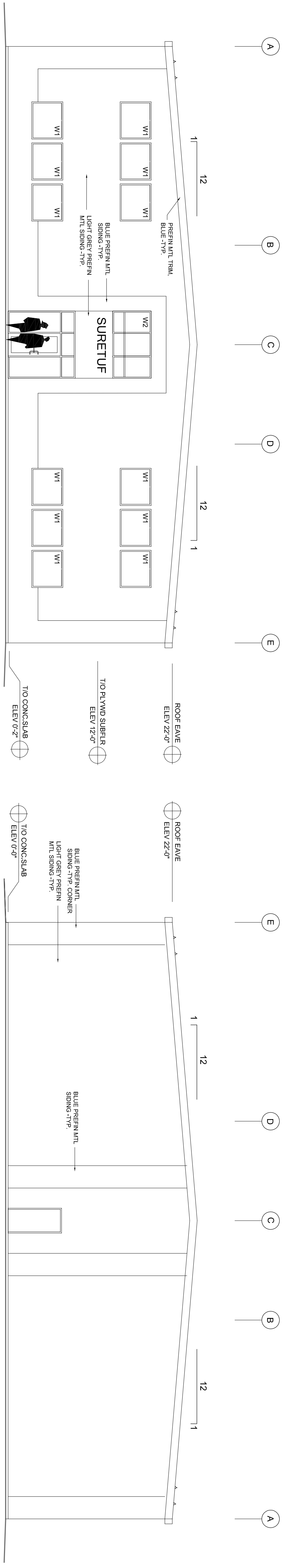
DRAWN: TY

CHECKED:

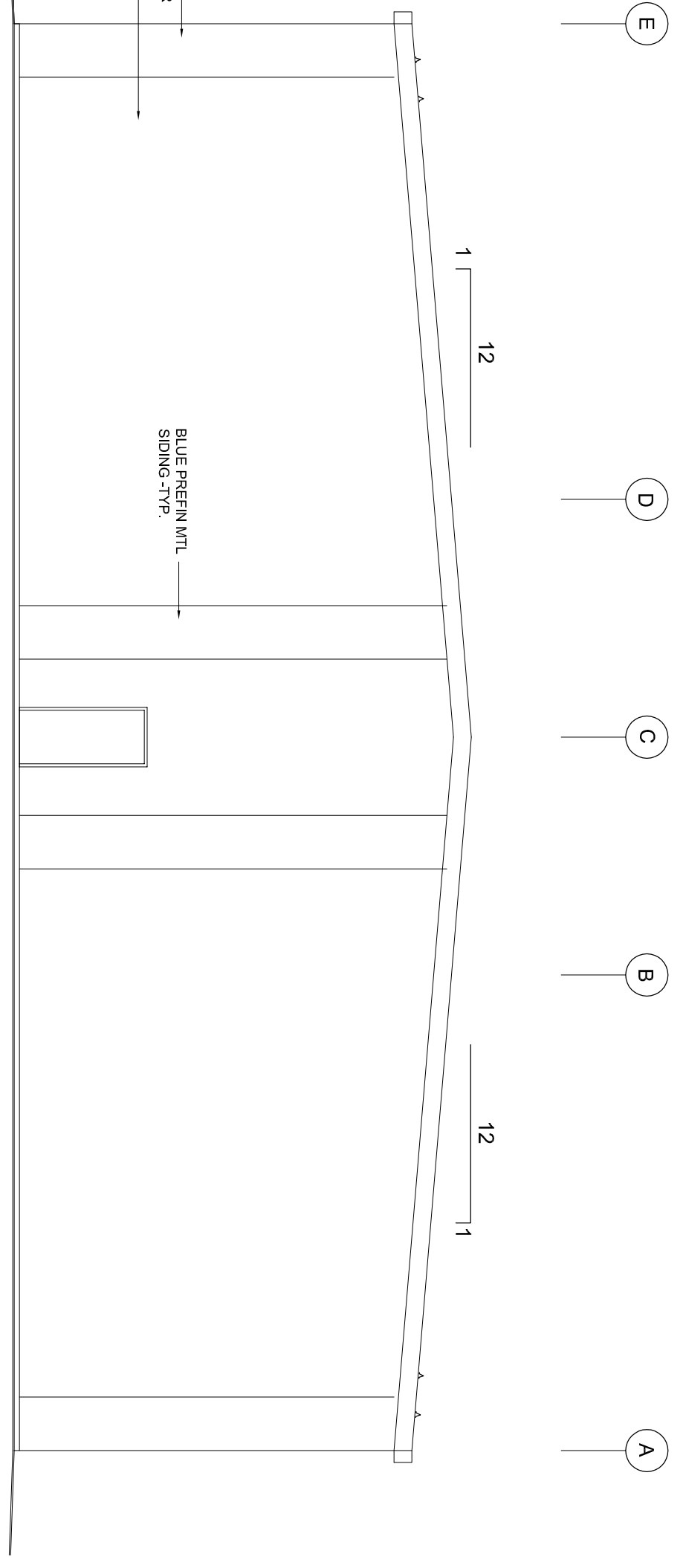
DWG N 2

ISSUED FOR BUILDING PERMIT
AUG 15, 2014

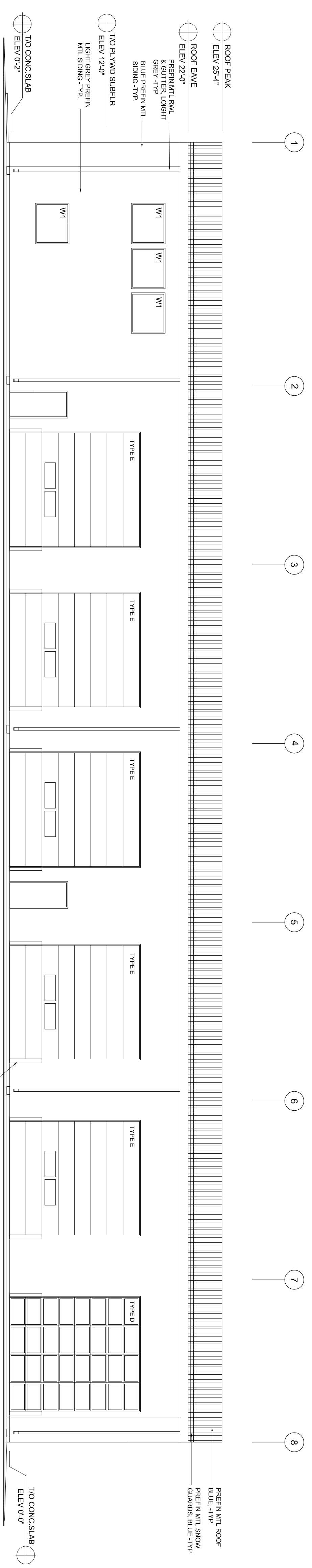
A100



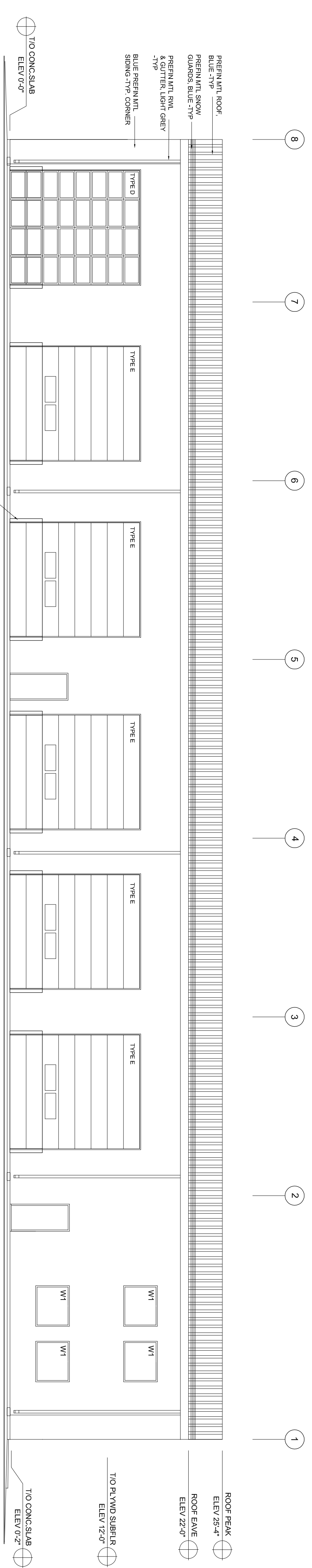
1 SOUTH ELEVATION
SCALE: 1/8" = 1'-0"



2 NORTH ELEVATION
SCALE: 1/8" = 1'-0"



3 EAST ELEVATION
SCALE: 1/8" = 1'-0"



4 WEST ELEVATION
SCALE: 1/8" = 1'-0"

| No. | DATE | REVISION | BY |
|-----|---------------|------------------------------|----|
| 3 | AUG 12, 2014 | ISSUED FOR REVIEW & APPROVED | TY |
| 2 | JULY 22, 2014 | ISSUED FOR REVIEW | TY |
| 1 | MAY 07, 2014 | ISSUED FOR REVIEW | TY |

UNIVERSAL CONSULTING GROUP (U.C.G.) LTD.
PH (760) 875-7550 FAX (760) 875-7662

THIS PLAN IS PROTECTED UNDER COPYRIGHT LAW, AND REPRODUCTION OF THE ILLUSTRATIONS OR WORKING DRAWINGS IS STRICTLY PROHIBITED. PURCHASER OF THESE PLANS THE RIGHT TO CONSTRUCT ONLY ONE STRUCTURE AND THESE PLANS CANNOT BE RESOLD.

CLIENT: **SURETUF CONTAINMENTS LTD.**

PROJECT: 80'X160' SHOP & OFFICE BUILDING

DRAWING: ELEVATIONS

SCALE: AS NOTED

DATE: 2014/04/29

FILE: C2014-0429

DRAWN: TY

CHECKED:

DWG NO:

ISSUED FOR BUILDING PERMIT
AUG 15, 2014

A200