



# ARCHIMAX

## ALUMINIUM CLADDING SYSTEM

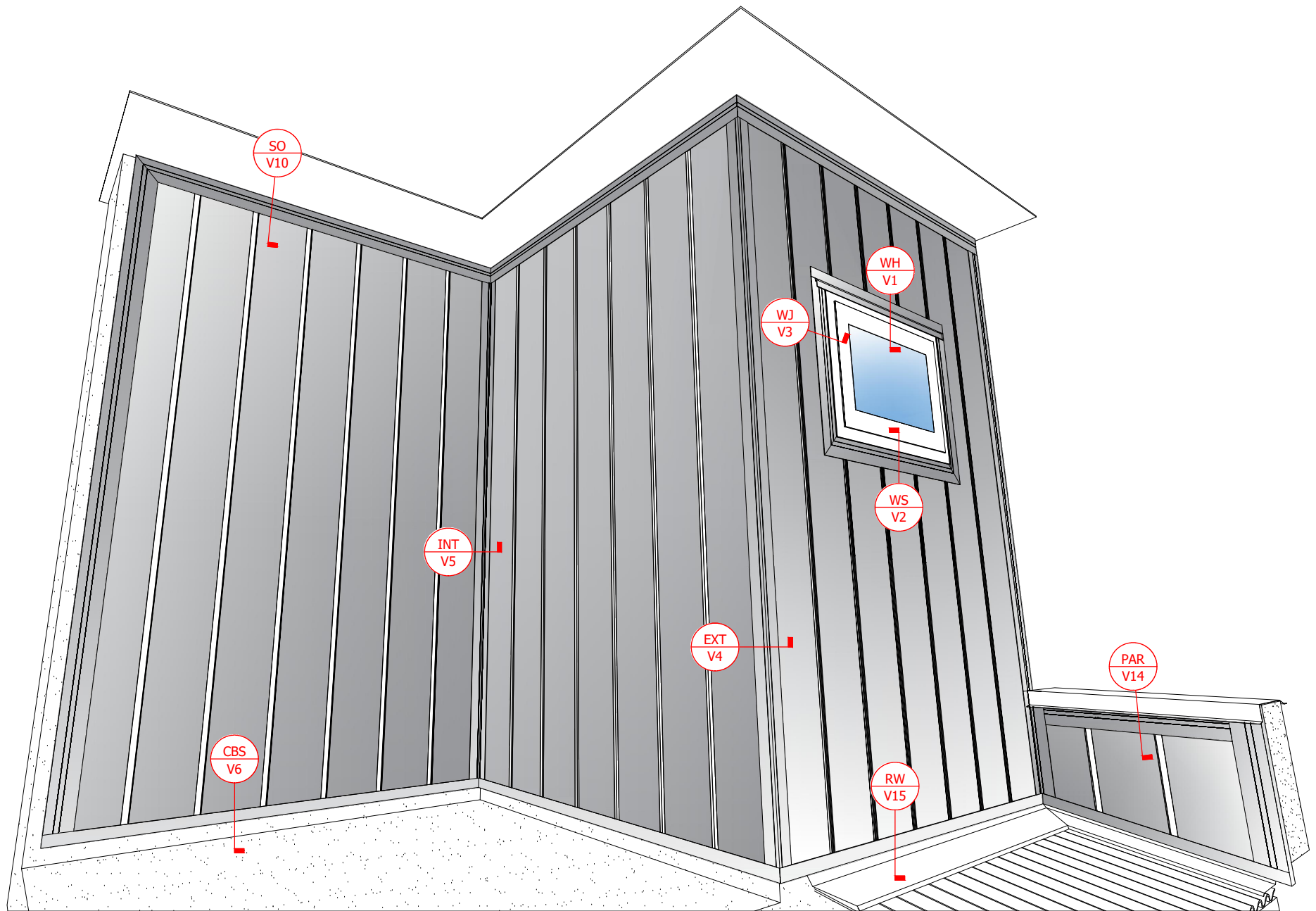
*Creating more durable building envelopes*

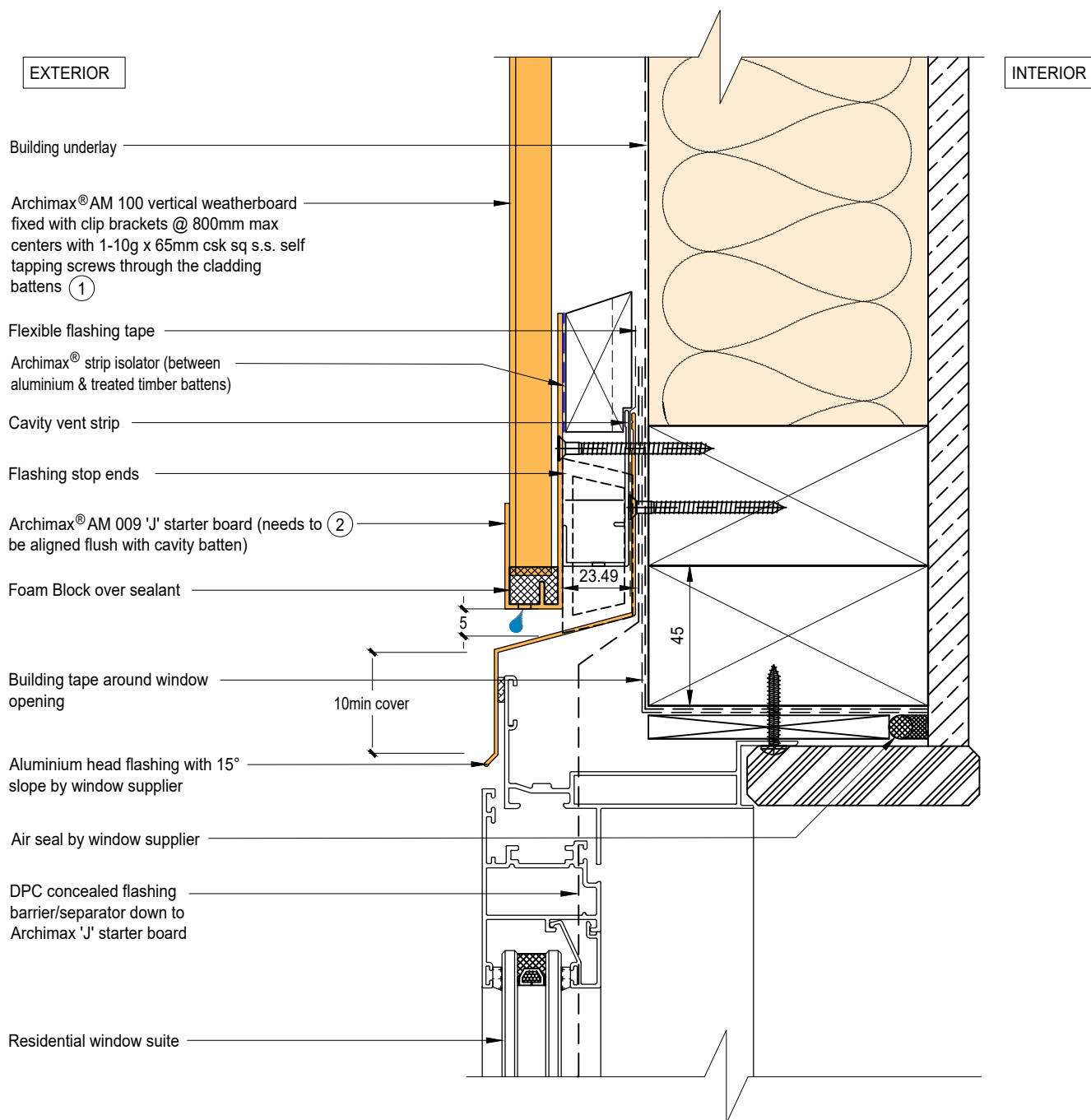
### Archimax® Aluminium Cladding System AM100 Vertical Profile – Installation Details

Drawing No.	Rev.	Description
AM-WH-V1	E	Archimax® Window Head Detail
AM-WS-V2	E	Archimax® Window Sill Detail
AM-WJ-V3	E	Archimax® Window Jamb Detail
AM-EXT-V4	E	Archimax® External Corner Detail
AM-INT-V5	E	Archimax® Internal Corner Detail
AM-CBS-V6.1	E	Archimax® Concrete Floor "J" Starter Board Detail - Timber
AM-CBS-V6.2	E	Archimax® Concrete Floor "J" Starter Board Detail - Fire Wall
AM-HJ-V7	E	Archimax® Horizontal Joint Detail
AM-DJ-V8	E	Archimax® Deck Junction Detail
AM-PP-V9a	E	Archimax® Pipe Penetration - Plan View Detail
AM-PP-V9b	E	Archimax® Pipe Penetration - Section View Detail
AM-SO-V10	E	Archimax® Soffit Detail
AM-SO-V11.1	E	Archimax® Facia, Soffit & Wall Detail
AM-SO-V11.2	E	Archimax® Facia, Soffit & Wall (90° Soffit / Wall ) Detail
AM-SO-V11.3	E	Archimax® Fascia, Board Soffit & Wall Detail
AM-NSO-V12	E	Archimax® Non - Soffit Detail
AM-BJ-V13	E	Archimax® Internal Corner Junction Detail
AM-PAR-V14	E	Archimax® Parapet with Cavity Detail
AM-RW-V15	E	Archimax® Lower Roof Wall Junction Detail
AM-MB-V16	E	Archimax® Meter Box Head Detail
AM-MB-V17	E	Archimax® Meter Box Sill Detail
AM-MB-V18	E	Archimax® Meter Box Jamb Detail



**AM100**  
coverage: 200mm

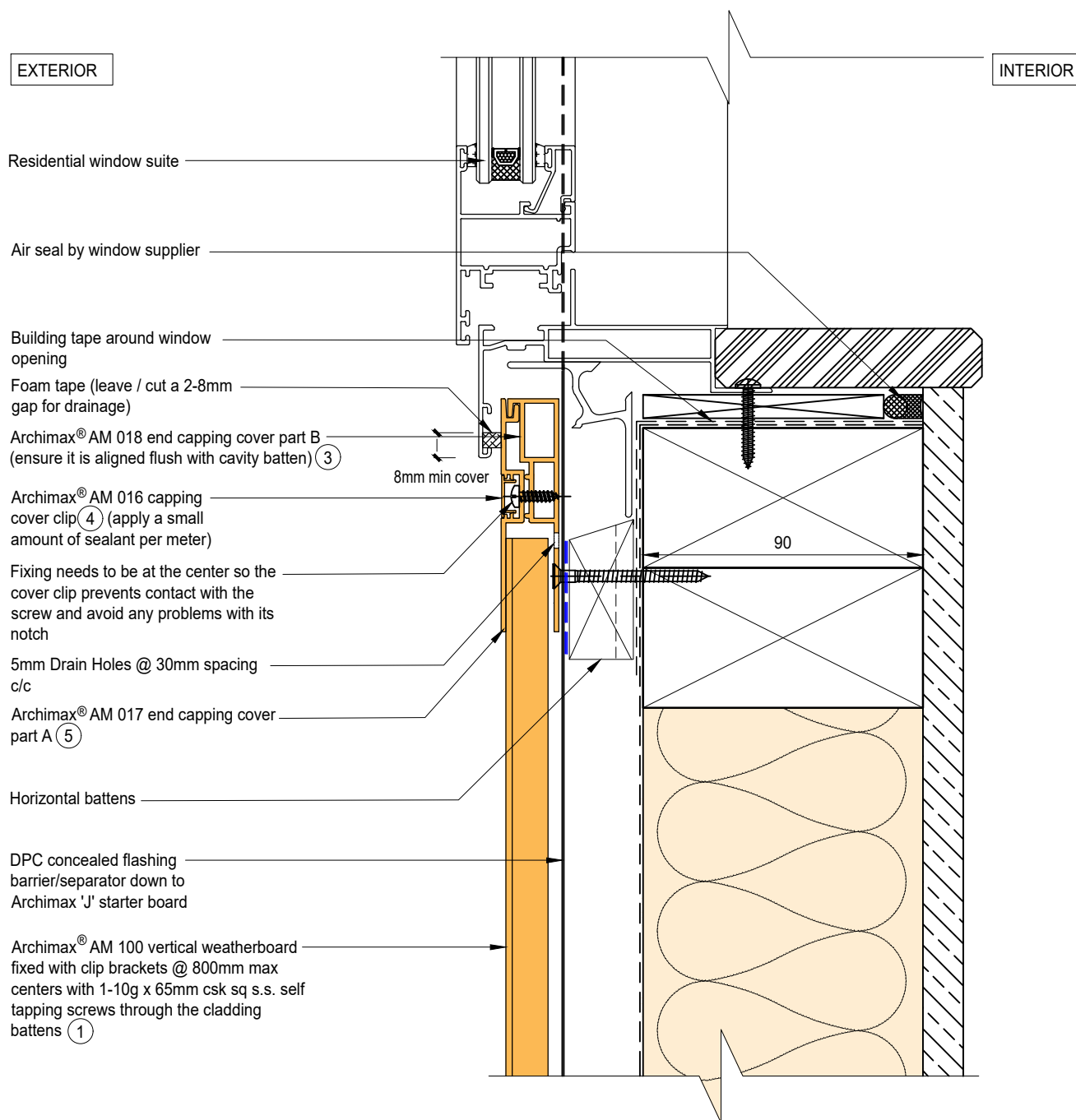




**NOTE:**

1. Stop ends to be installed at flashing ends.
2. Minimum Clearance between the AIR BARRIER and WINDOW JOINERY to be 45mm. Window Joinery should not be permanently fixed until cladding installed.
3. Sealant on each ends of the 'J' starter board to prevent water going into cavity.
4. Timber Cavity Batten at 800mm max spacing.
5. Secure the AM029 clip with 1 screw for standard use, or 2 screws for added support





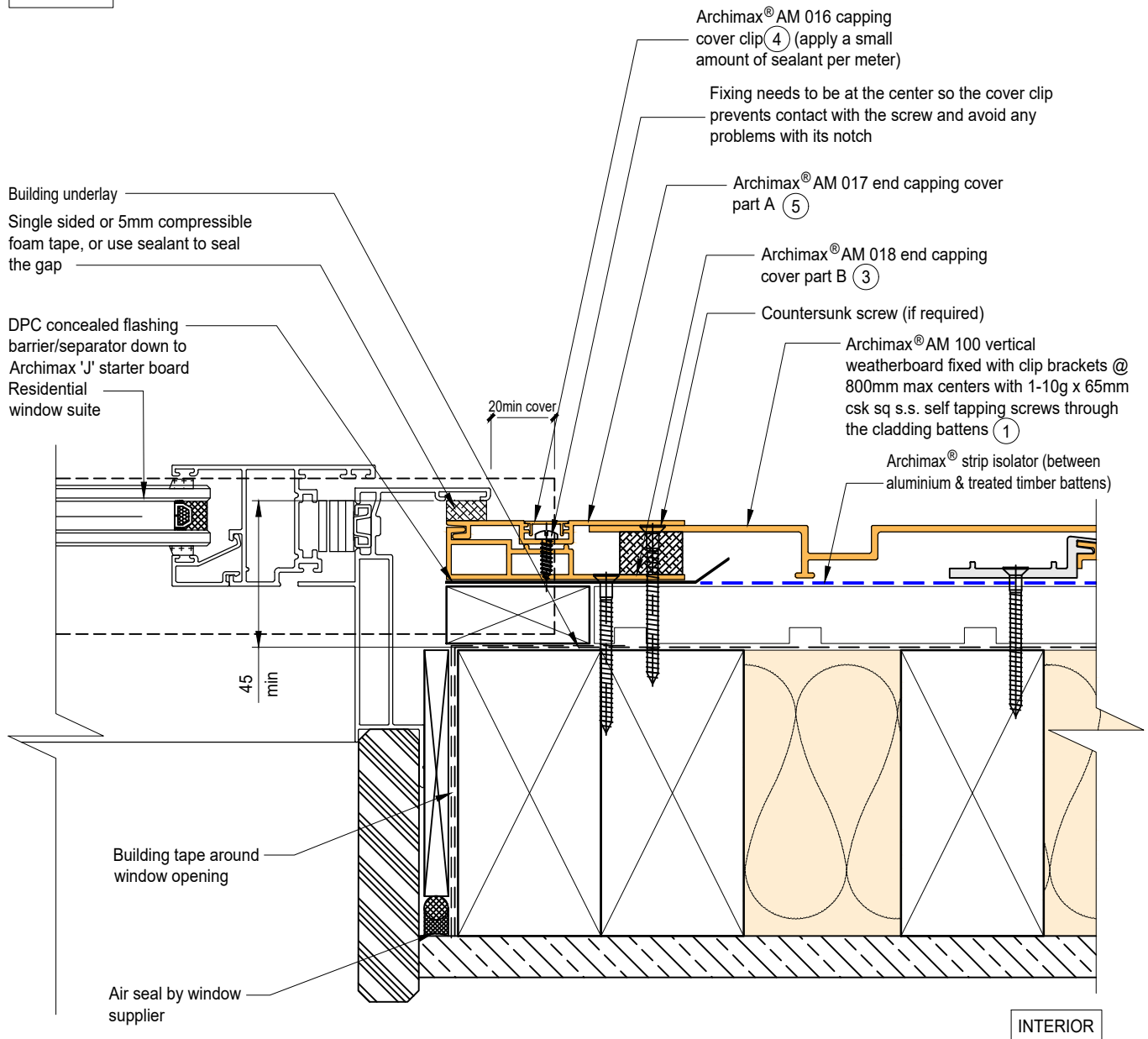
#### NOTE:

1. Minimum Clearance between the AIR BARRIER and WINDOW JOINERY to be 45mm. Window Joinery should not be permanently fixed until cladding installed.
2. Apply a small amount of sealant to every meter of the AM016 cover clip. Report to Archimax if AM016 cover clips are loose or tight. Do not force to install.
3. Timber Cavity Batten at 800mm max spacing.
4. Secure the AM029 clip with 1 screw for standard use, or 2 screws for added support





EXTERIOR

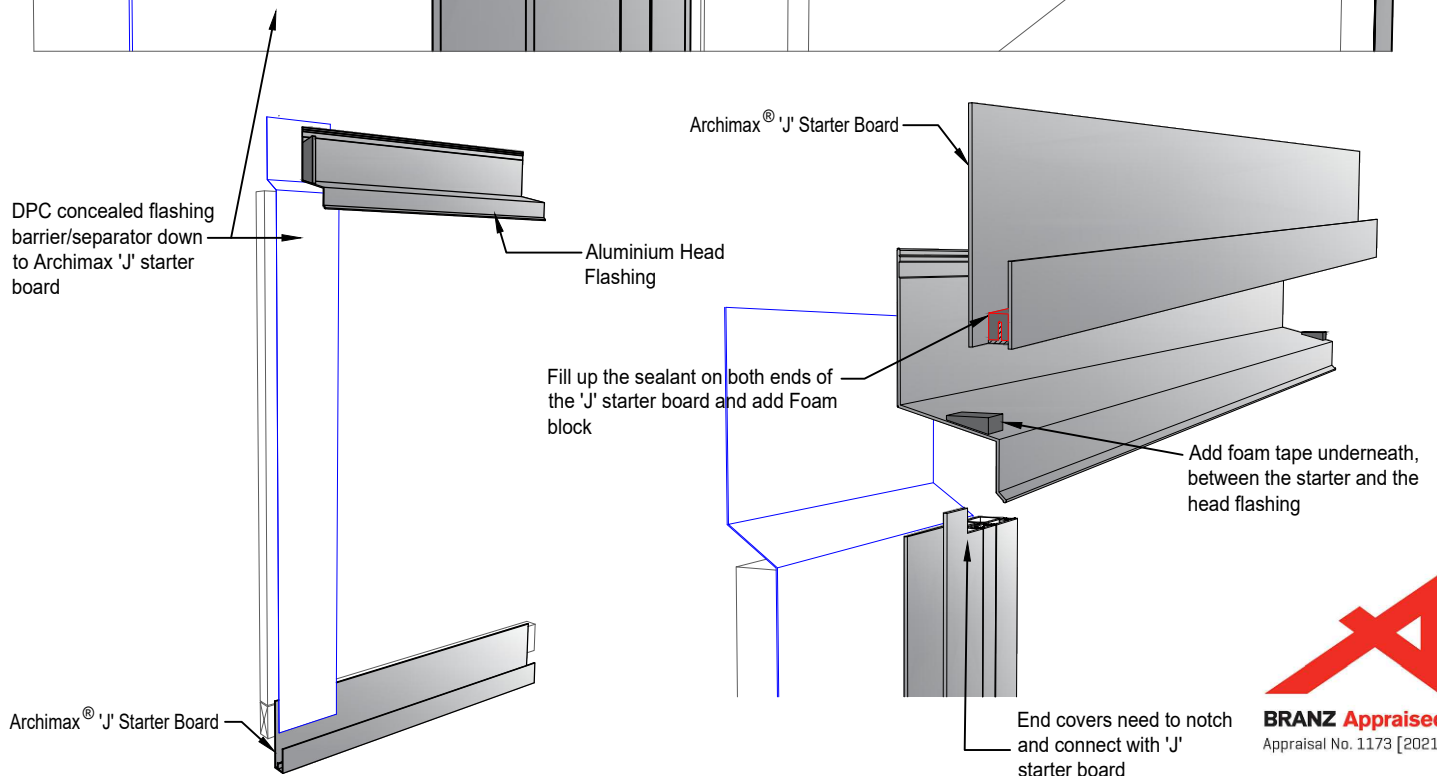
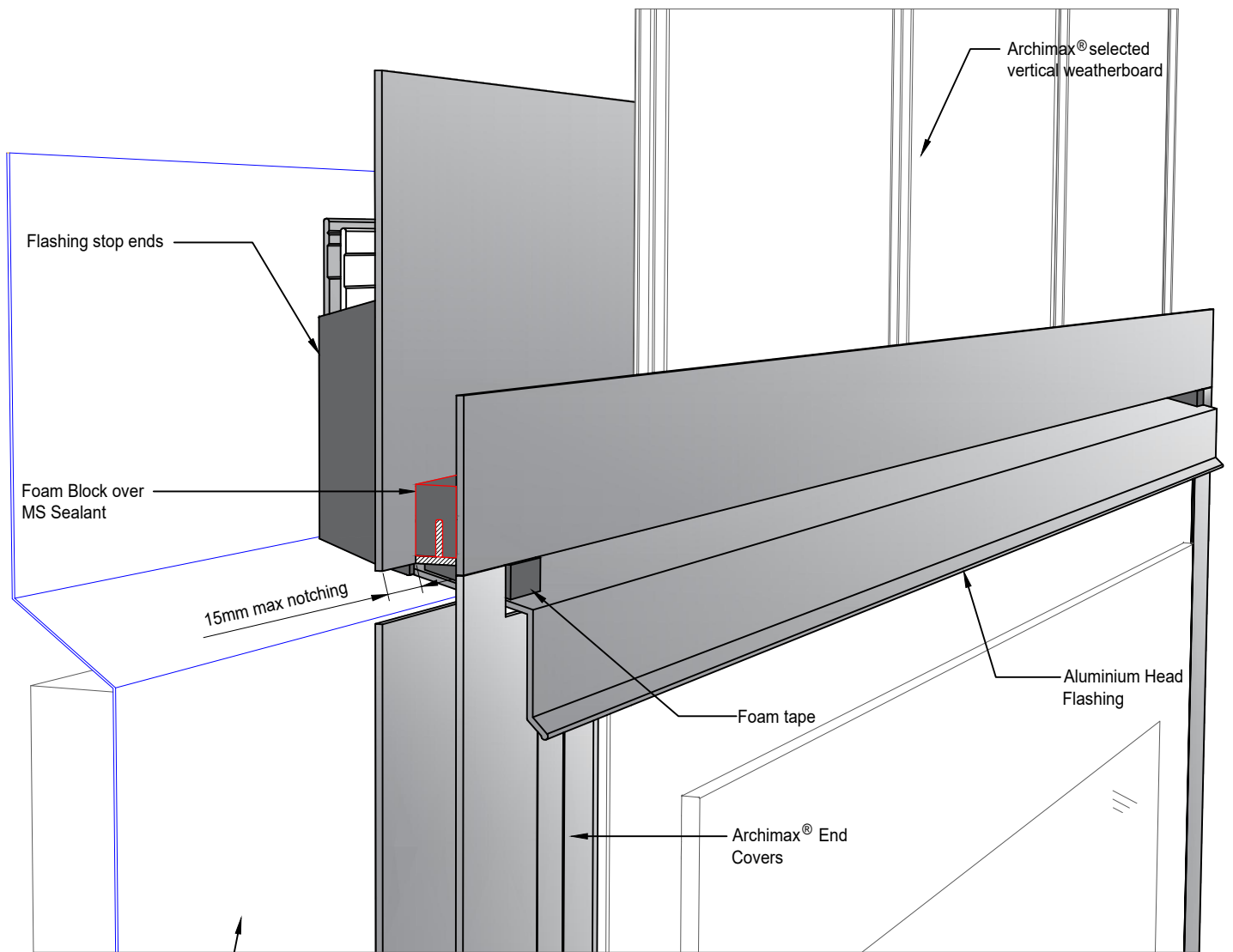


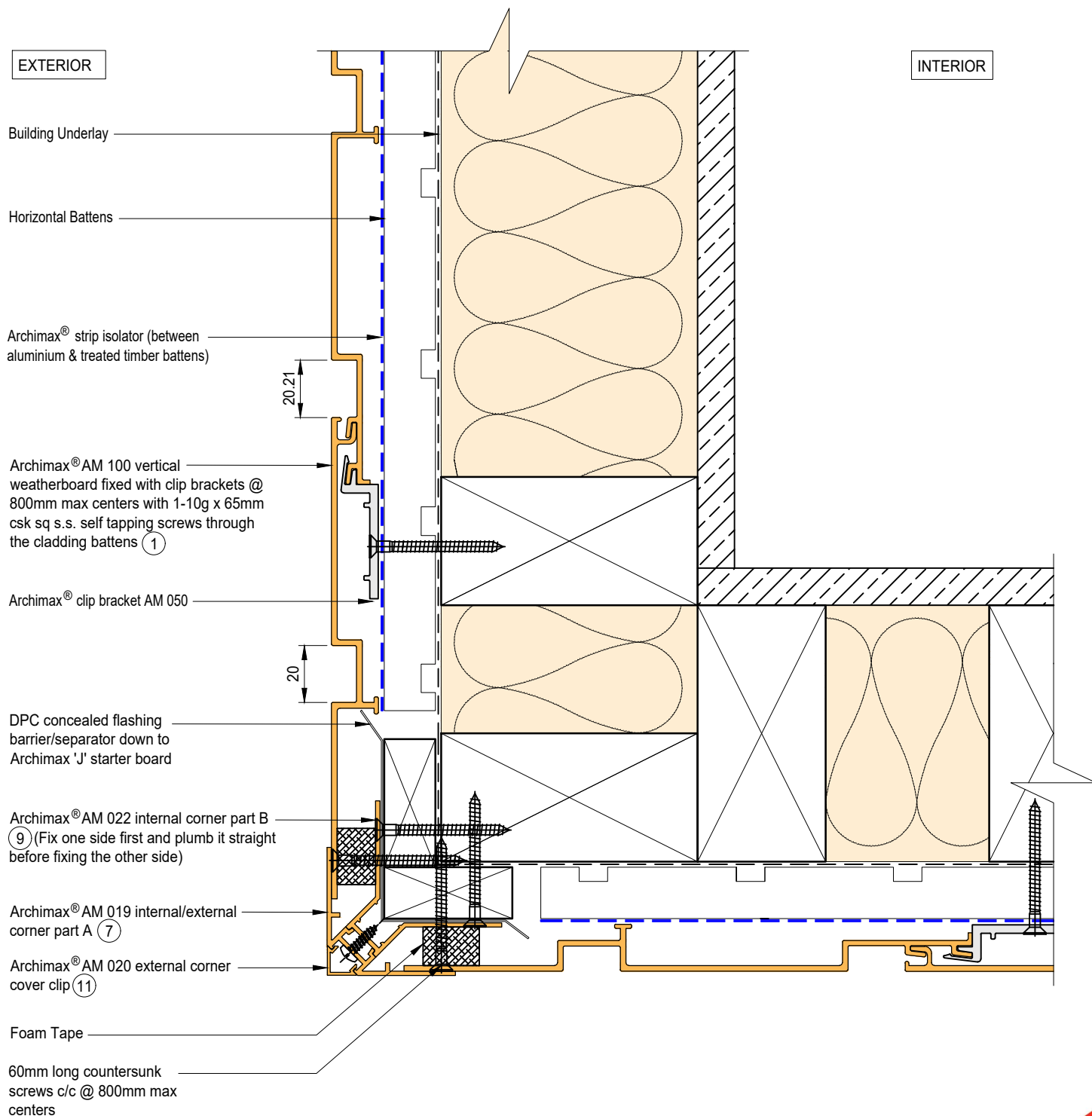
INTERIOR

NOTE:

1. Minimum Clearance between the AIR BARRIER and WINDOW JOINERY to be 45mm. Window Joinery should not be permanently fixed until cladding installed.
2. Ideally, use 5mm compressible foam tape, or use sealant to seal the gap between window frame and Archimax cladding depending on the site situation.
3. Apply a small amount of sealant to every meter of the AM016 cover clip. Report to Archimax if AM016 cover clips are loose or tight. Do not force to install.



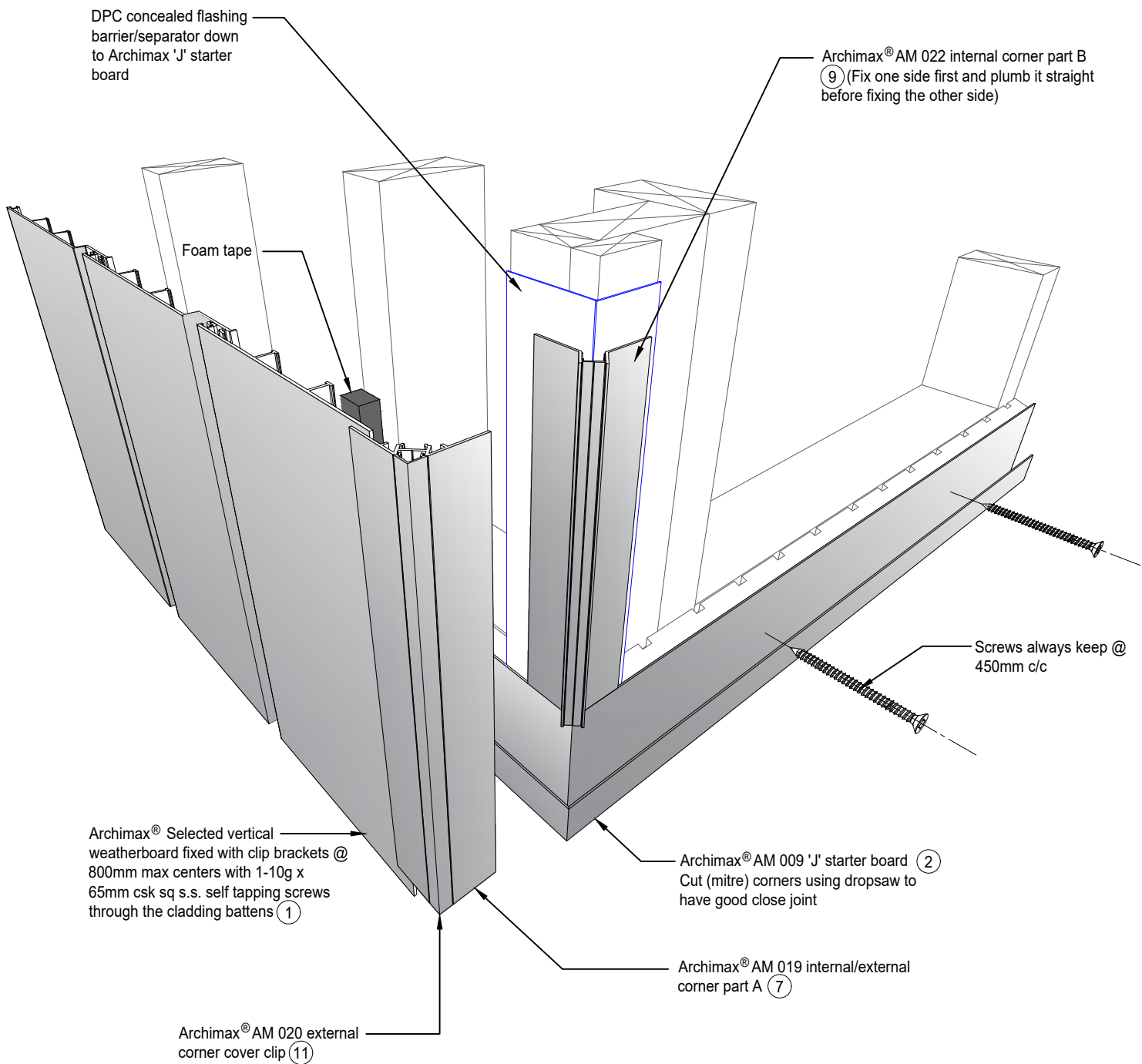


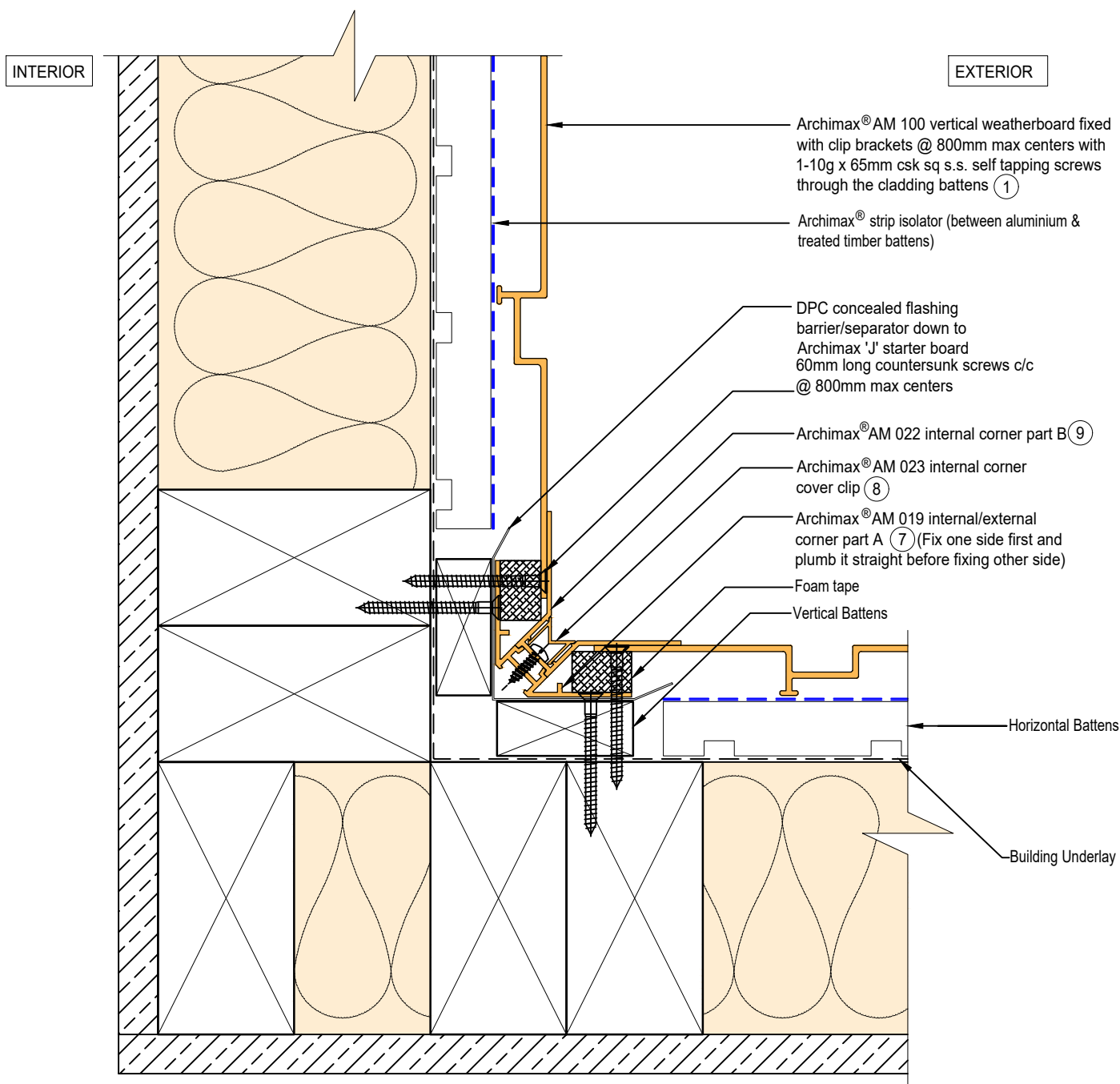


**NOTE:**

1. Fix the External Corner part B on one side first and plumb it straight before fixing the other side to avoid twisting.






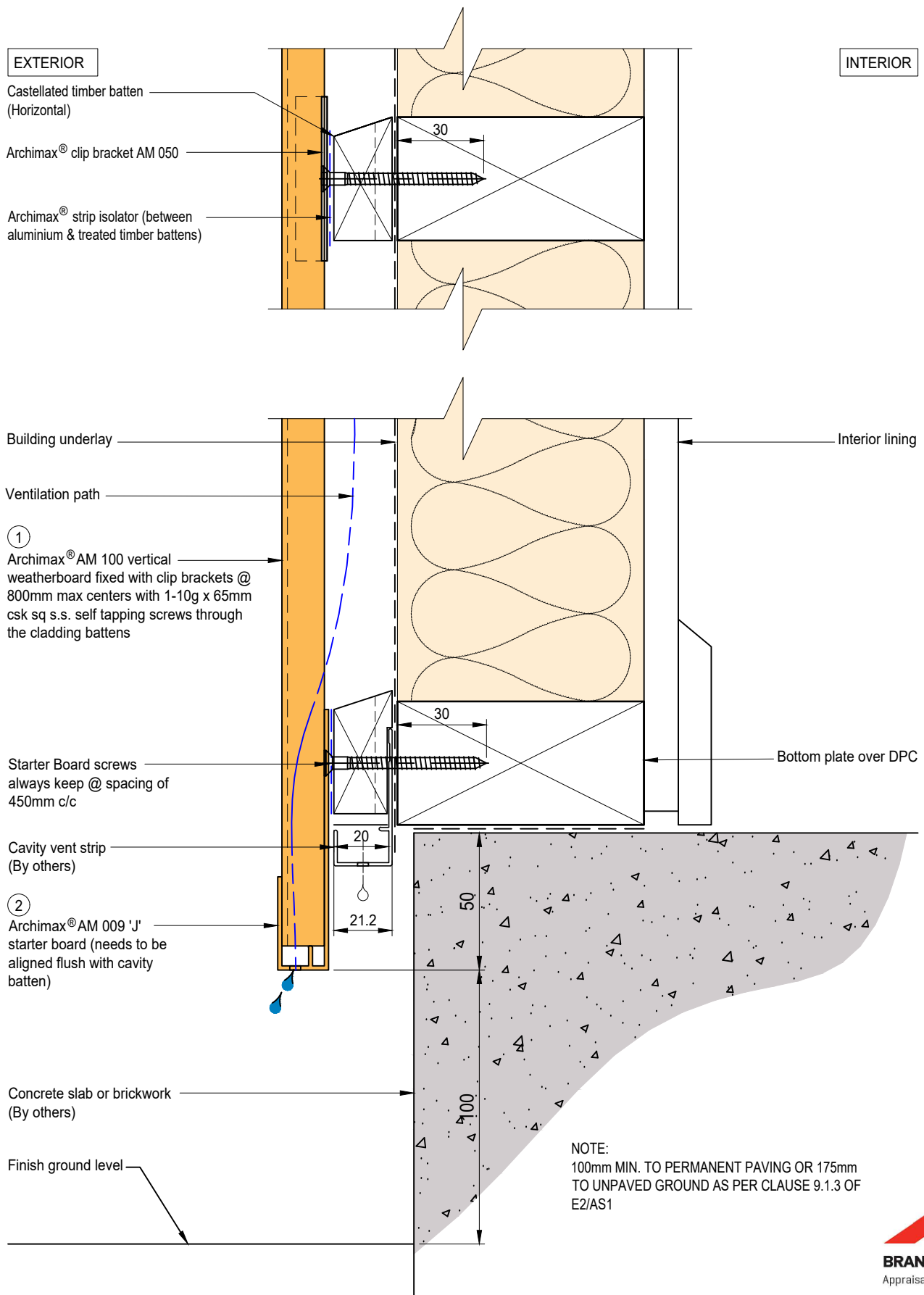


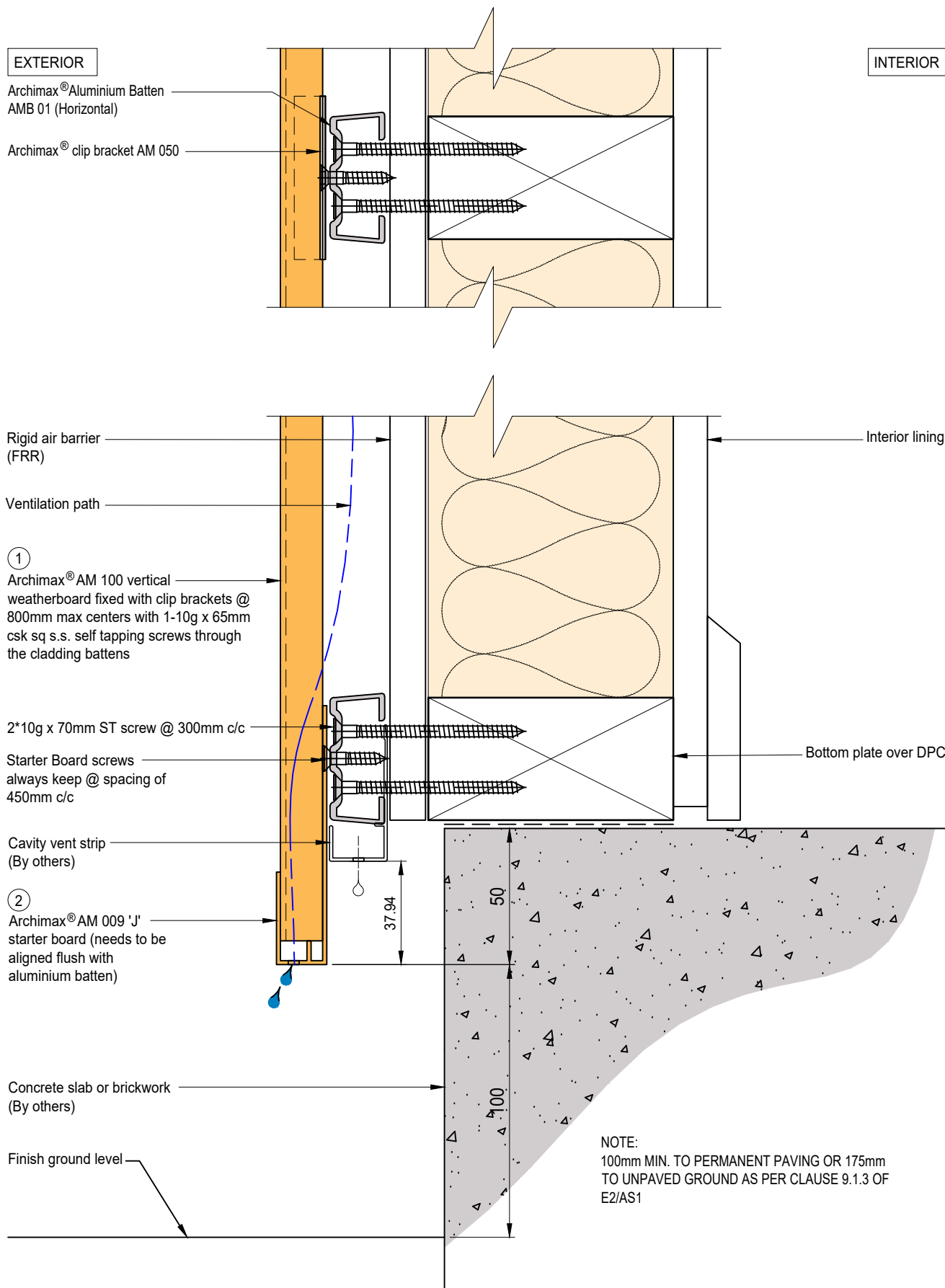
NOTE:

1. Fix the AM 019 internal/external corner part A on one side first and plumb it straight before fixing the other side to avoid twisting.

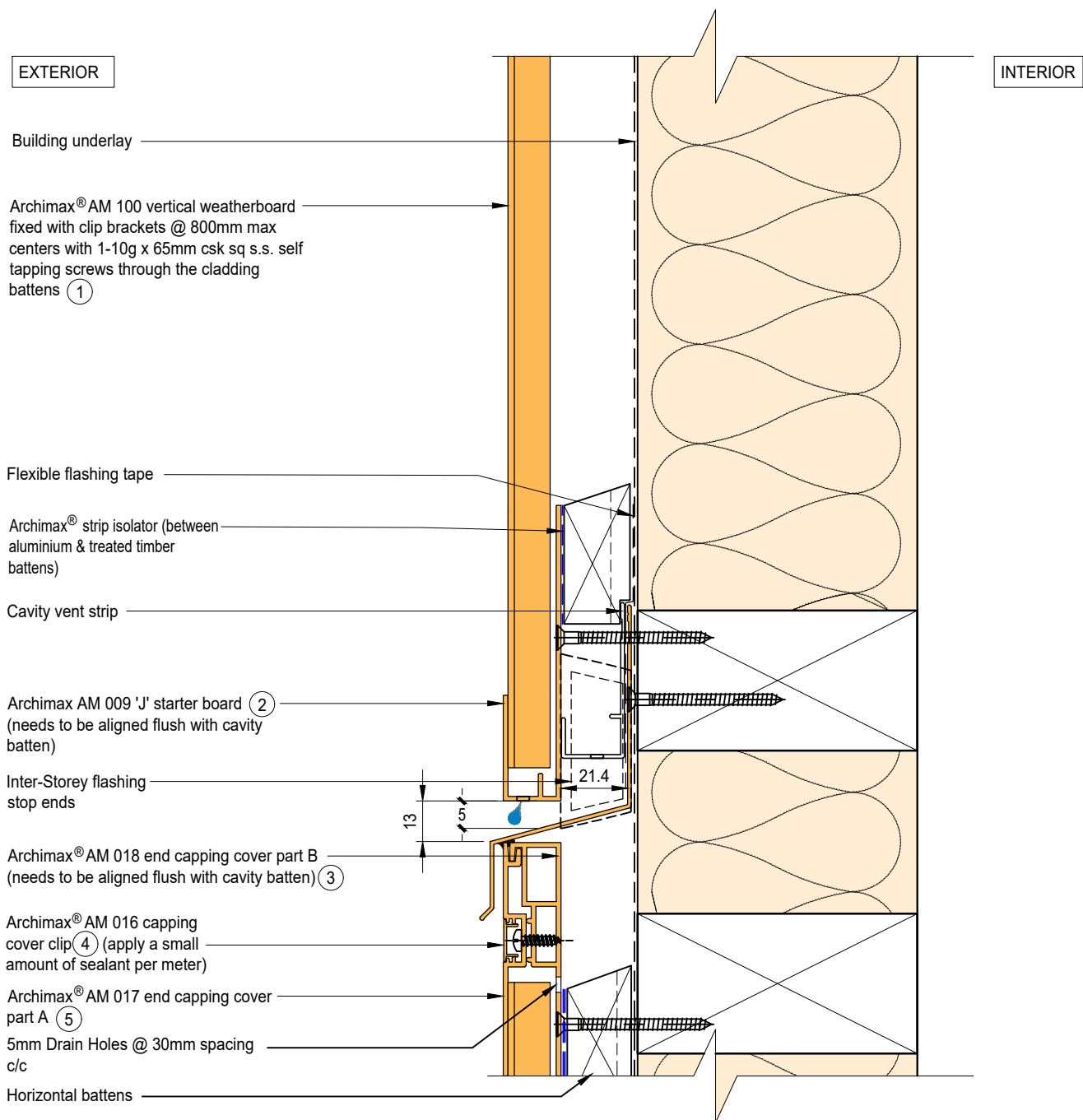


 <b>ARCHIMAX</b> ALUMINIUM CLADDING SYSTEM <i>Creating more durable building envelopes</i> <a href="http://www.archimax.co.nz">www.archimax.co.nz</a>	System AM100 - VERTICAL WEATHERBOARD	Detail ARCHIMAX® INTERNAL CORNER DETAIL	Drawing No. Rev. AM-INT-V5 E	
	This drawing is the copyright of Archimax Limited. Modification of details for job specification requirements must be approved by Archimax Ltd. The building designer is ultimately responsible to ensure all building work is designed and constructed according to building code requirements, best code of practice industry guidelines. All components must be supplied by Archimax. Archimax reserves the right to alter or upgrade details at any time without prior notice.			Scale Date 1:2 NOV24



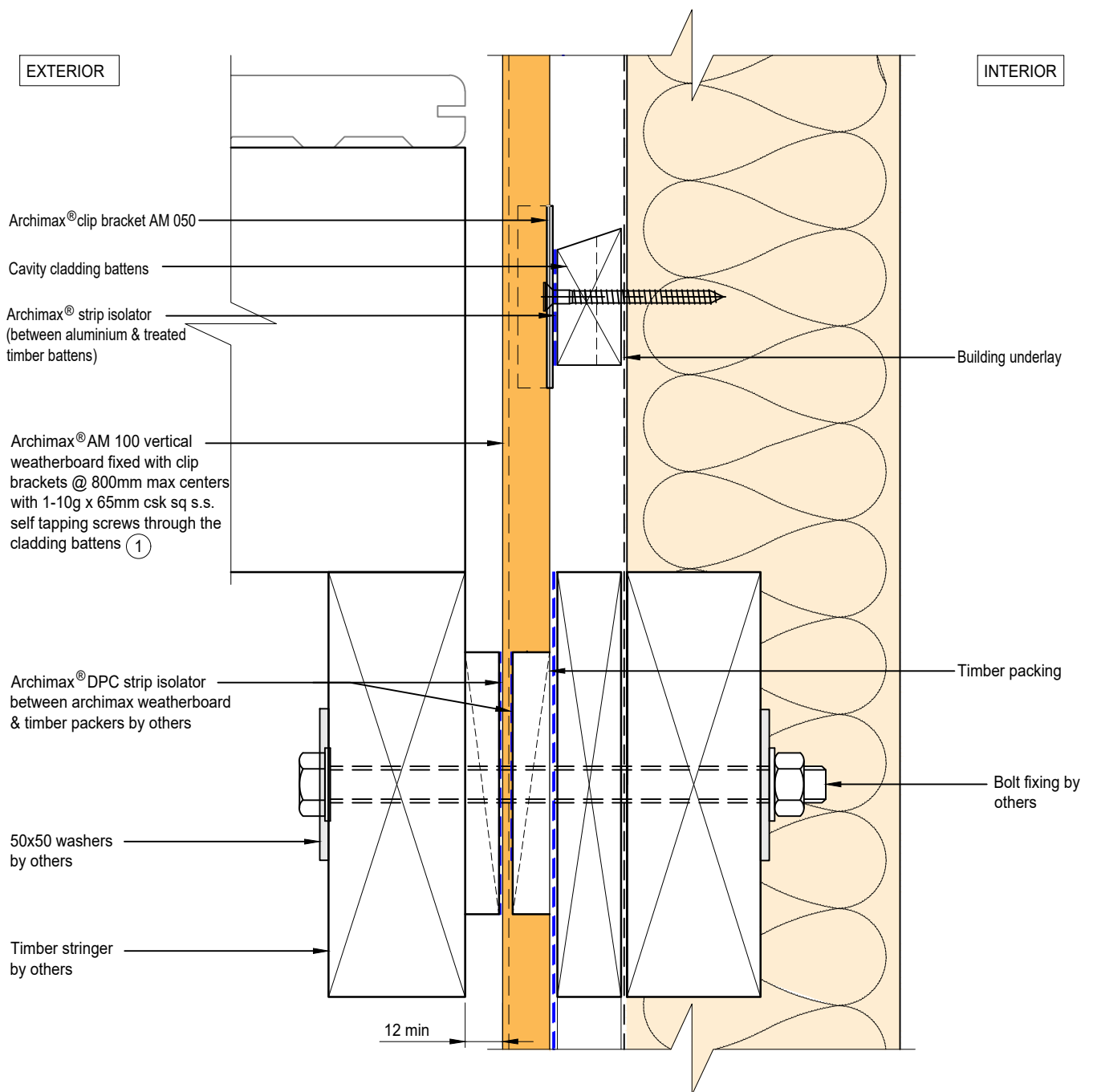




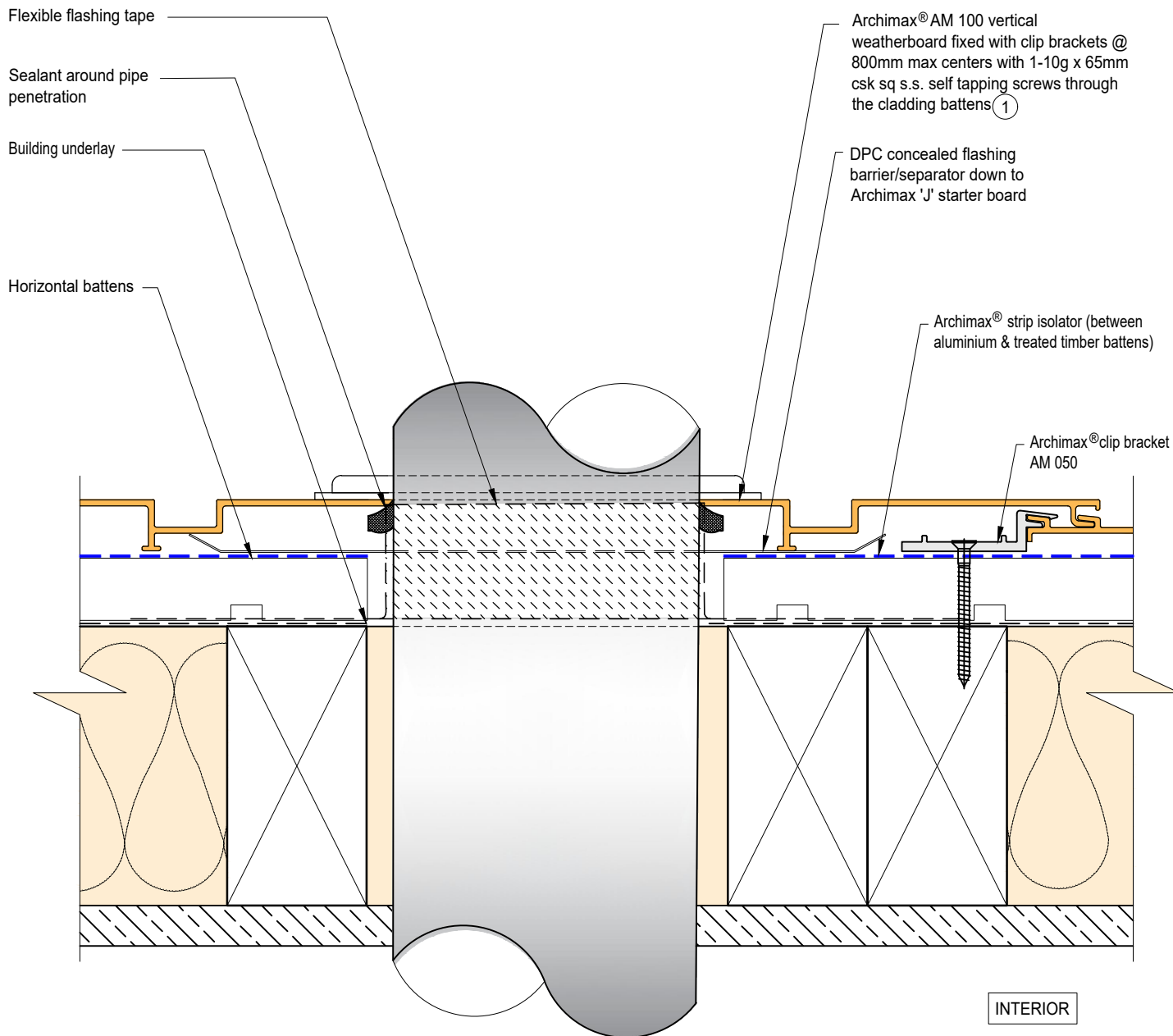


NOTE:  
STOP ENDS TO BE INSTALLED AT INTER-STOREY FLASHING ENDS





EXTERIOR



INTERIOR



EXTERIOR

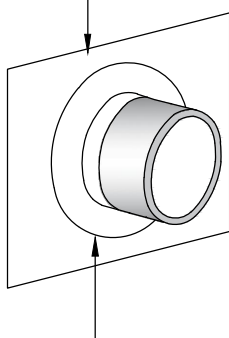
INTERIOR

Archimax® AM 100 vertical weatherboard  
fixed with clip brackets @ 800mm max  
centers with 1-10g x 65mm csk sq s.s. self  
tapping screws through the cladding  
battens ①

Archimax® clip bracket AM 050

Horizontal battens

DPC concealed flashing  
barrier/separator down to  
Archimax 'J' starter board



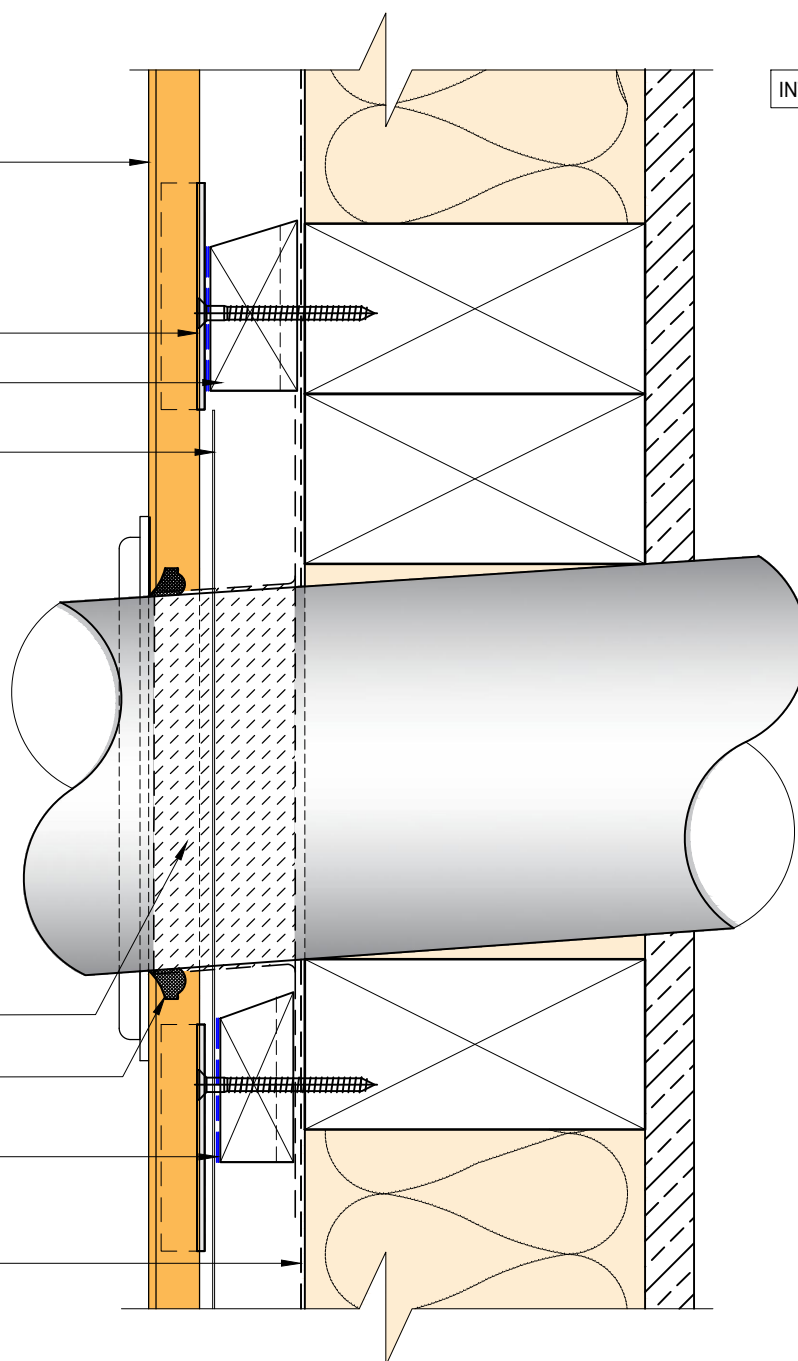
Pipe cover flange bed sealed to  
Archimax Cladding by others

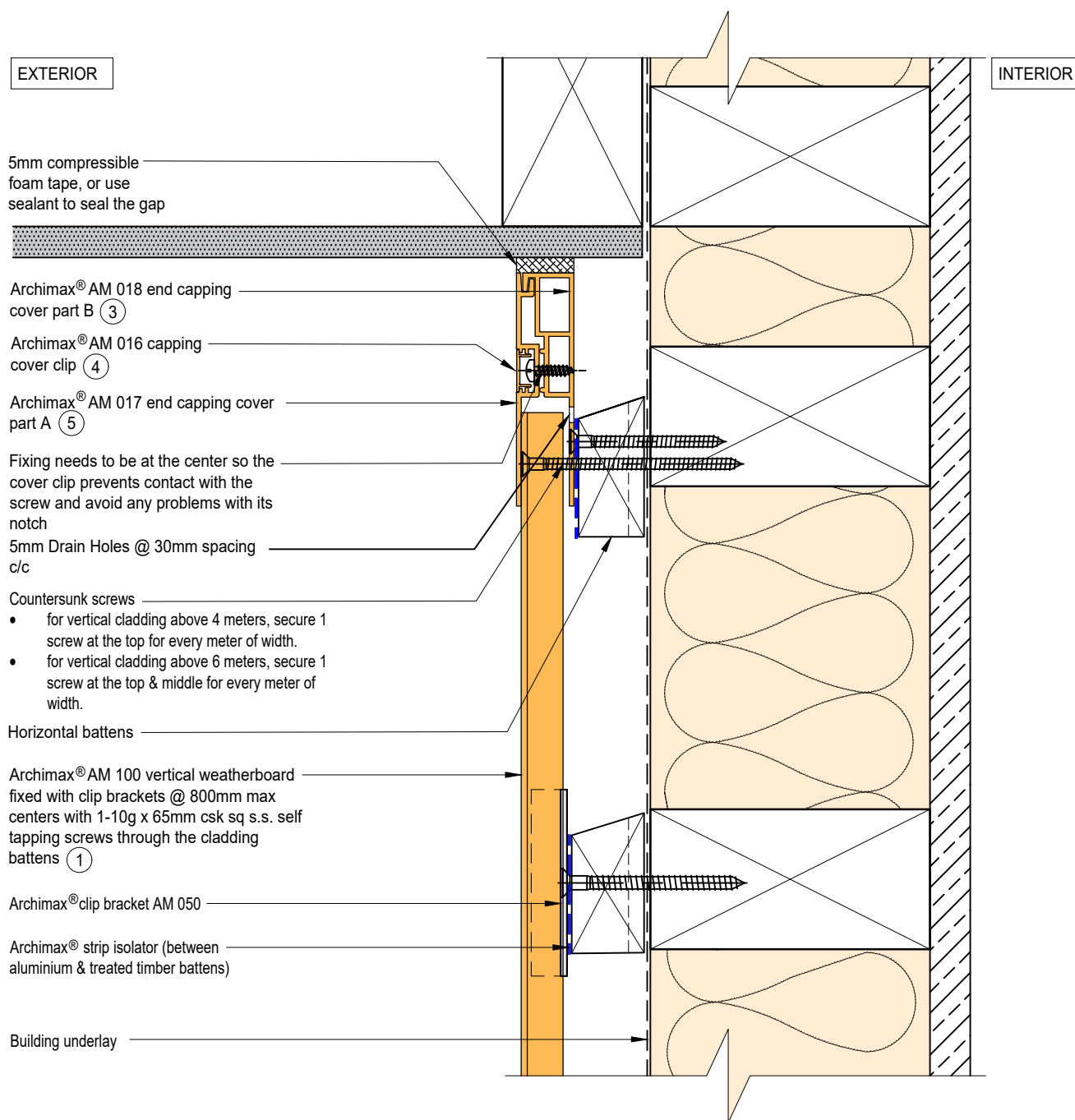
Flexible flashing tape

Sealant around pipe  
penetration

Archimax® strip isolator (between  
aluminium & treated timber battens)

Building underlay




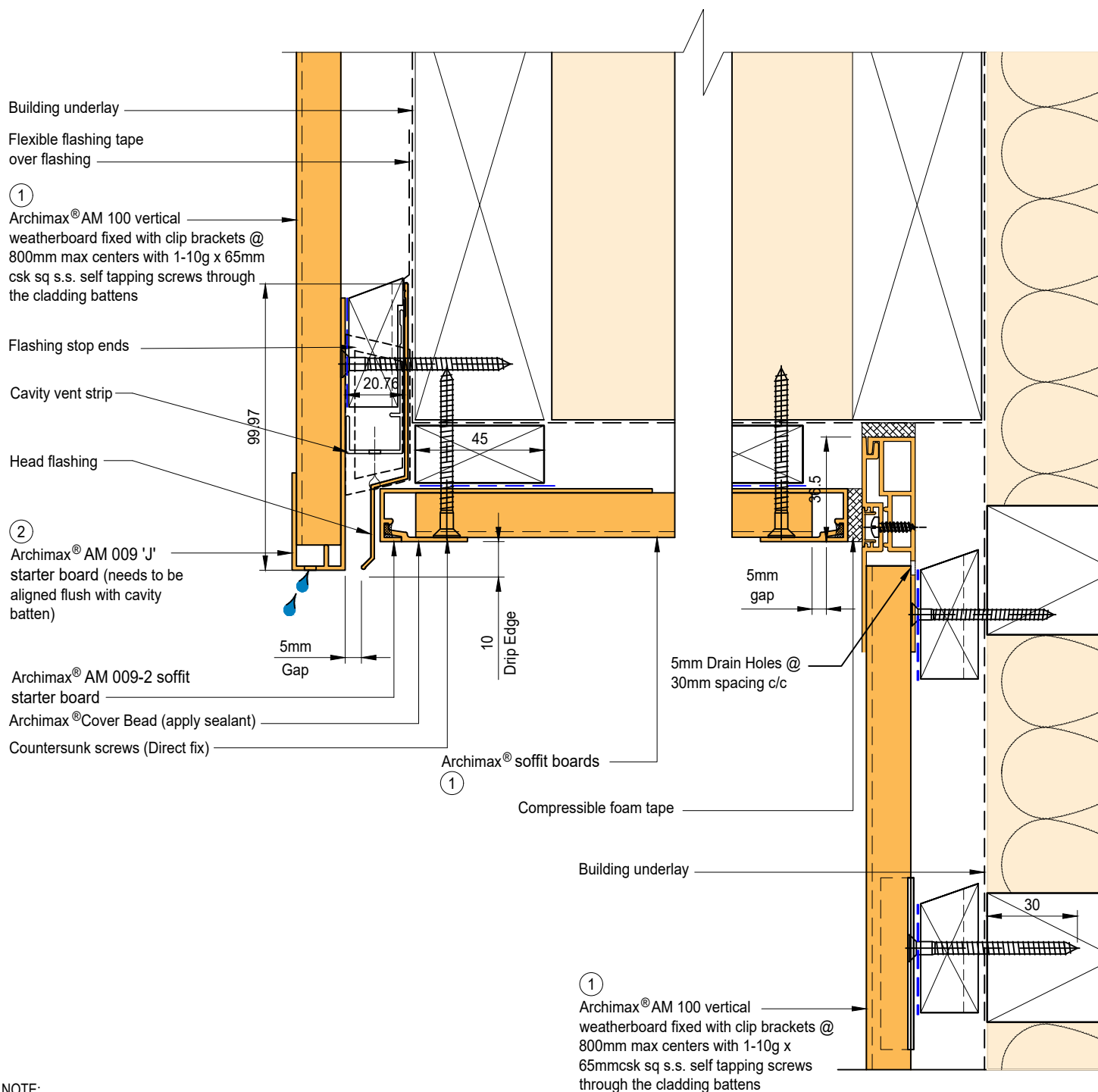


**NOTE:**

1. Ideally, use 5mm compressible foam tape, or use sealant to seal the gap between soffit and Archimax cladding depending on the site situation.
2. For vertical cladding more than 4 meters, secure 1 screw at the top for every meter of width. If it exceeds 6 meters, fix at both top and middle with one screw each.
3. Timber Cavity Batten at 800mm max spacing.
4. Secure the AM029 clip with 1 screw for standard use, or 2 screws for added support



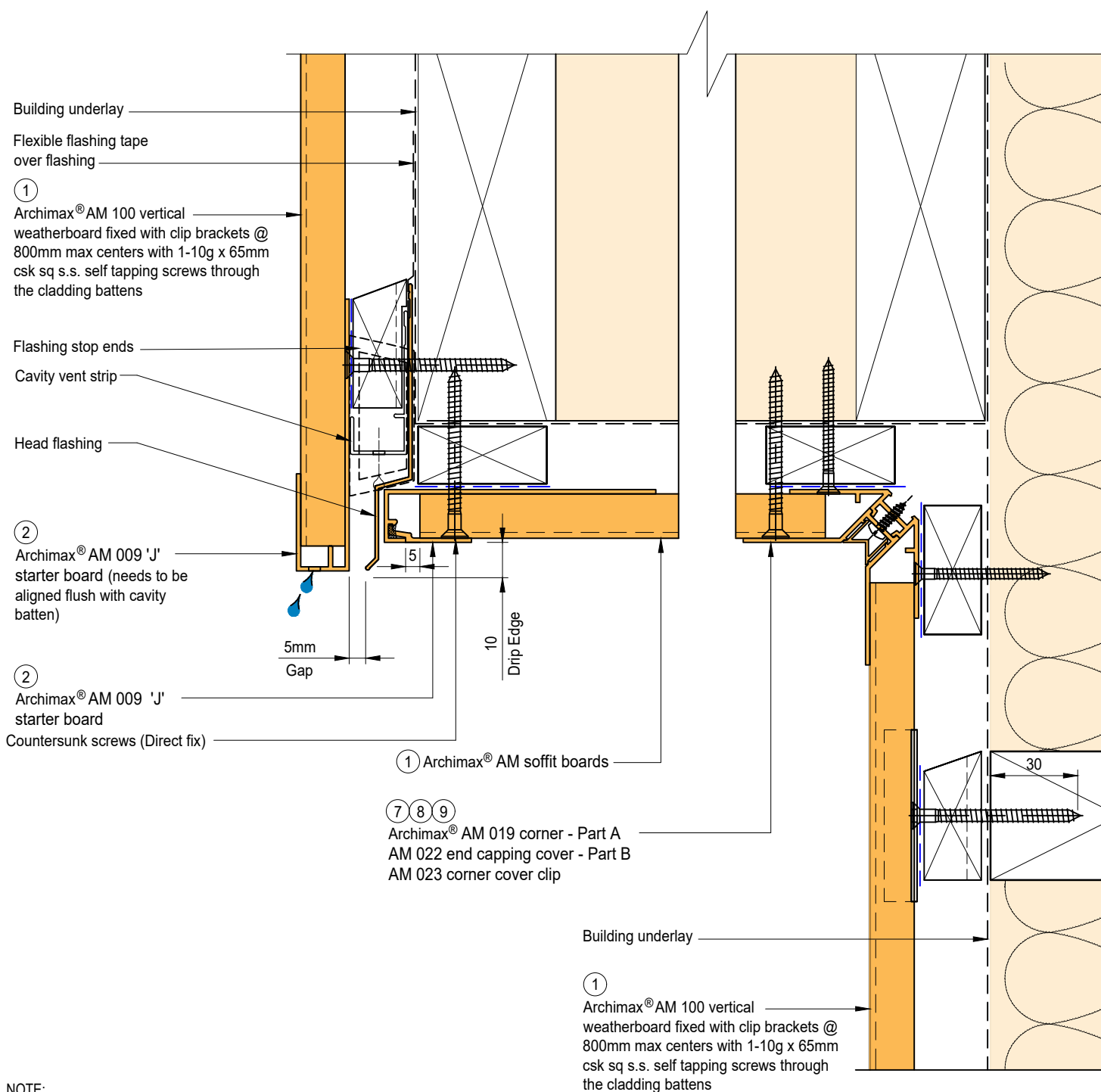
 <b>ARCHIMAX</b> ALUMINIUM CLADDING SYSTEM <i>Creating more durable building envelopes</i> <a href="http://www.archimax.co.nz">www.archimax.co.nz</a>	System AM100 - VERTICAL WEATHERBOARD	Detail ARCHIMAX® SOFFIT DETAIL	Drawing No. Rev. AM-SO-V10 E	
	This drawing is the copyright of Archimax Limited. Modification of details for job specification requirements must be approved by Archimax Ltd. The building designer is ultimately responsible to ensure all building work is designed and constructed according to building code requirements, best code of practice industry guidelines. All components must be supplied by Archimax. Archimax reserves the right to alter or upgrade details at any time without prior notice.		Scale 1:2	Date NOV24



NOTE:

1. Stop ends to be installed at flashing ends.
2. Soffit requires direct fixing without brackets.

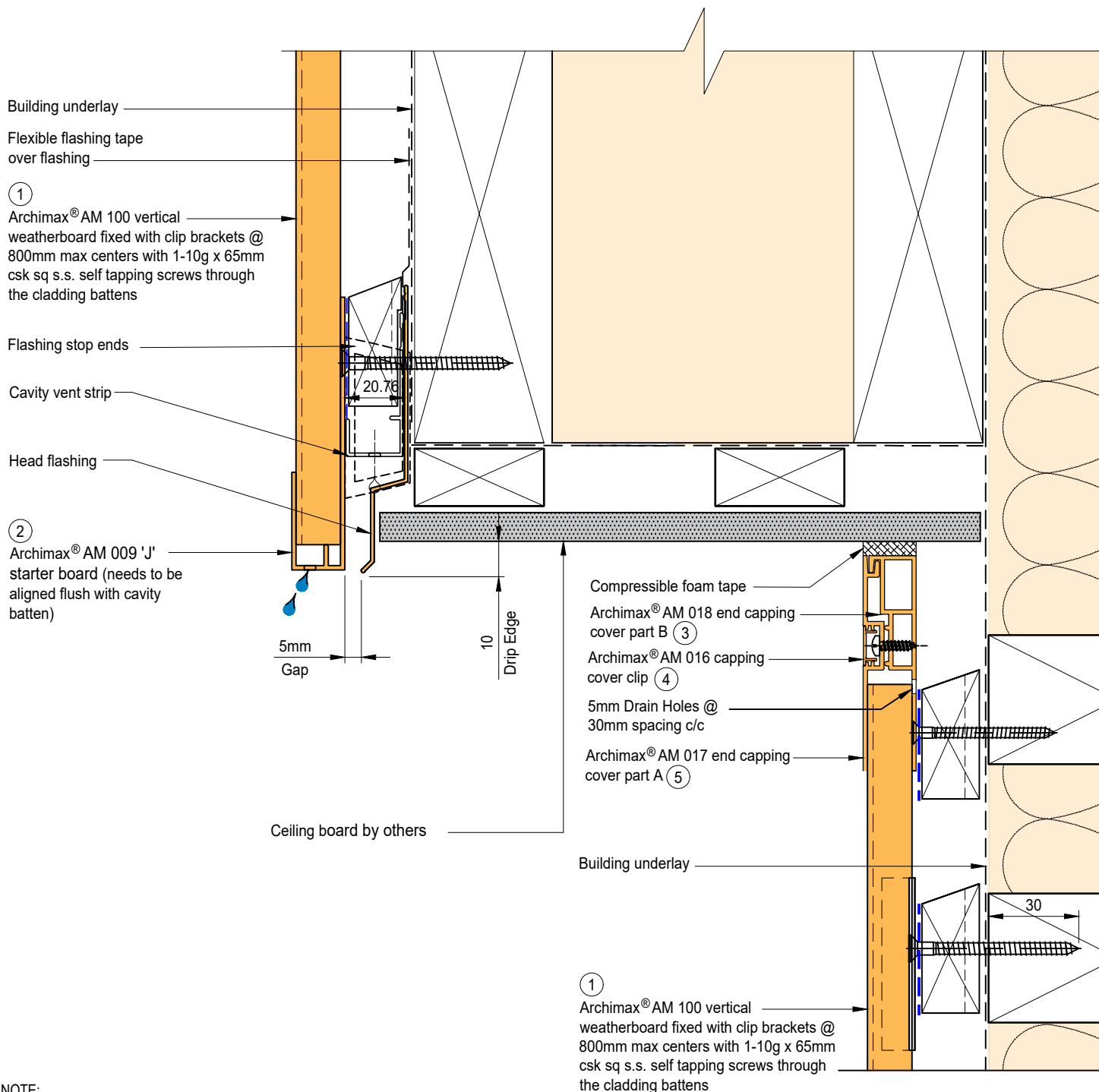




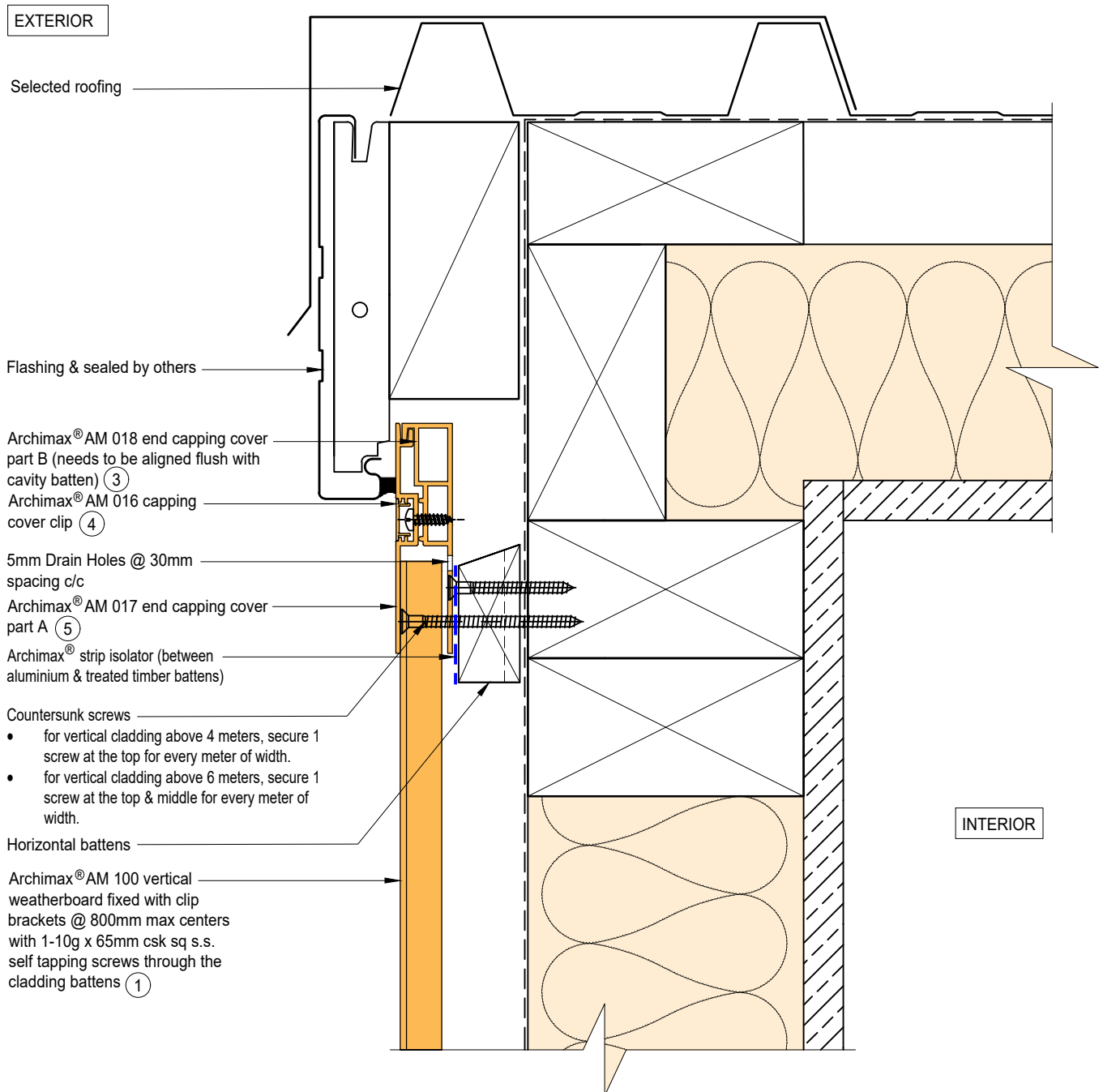
NOTE:

1. Stop ends to be installed at flashing ends.
2. Soffit requires direct fixing without brackets.





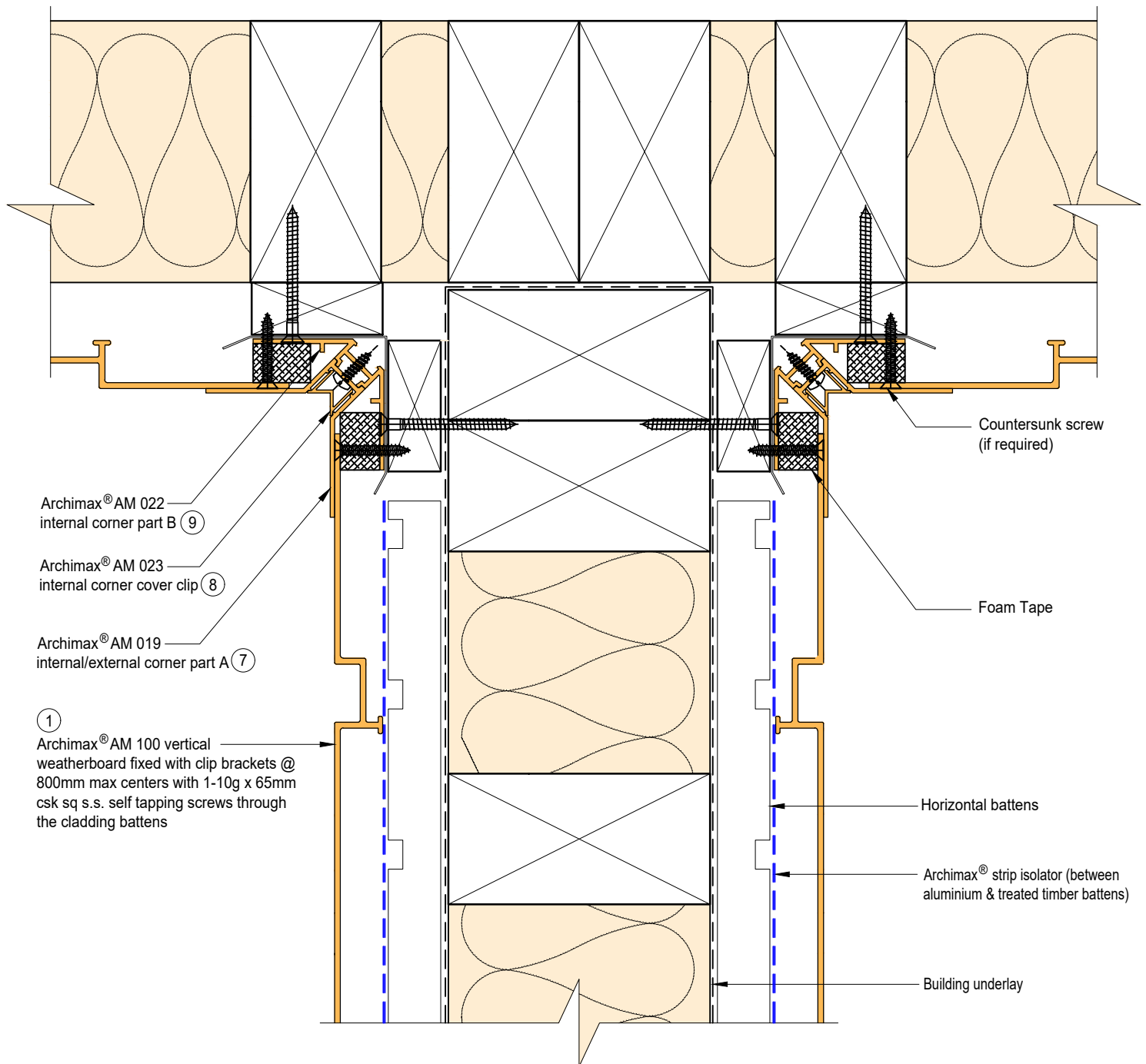
NOTE:  
STOP ENDS TO BE INSTALLED AT FLASHING ENDS

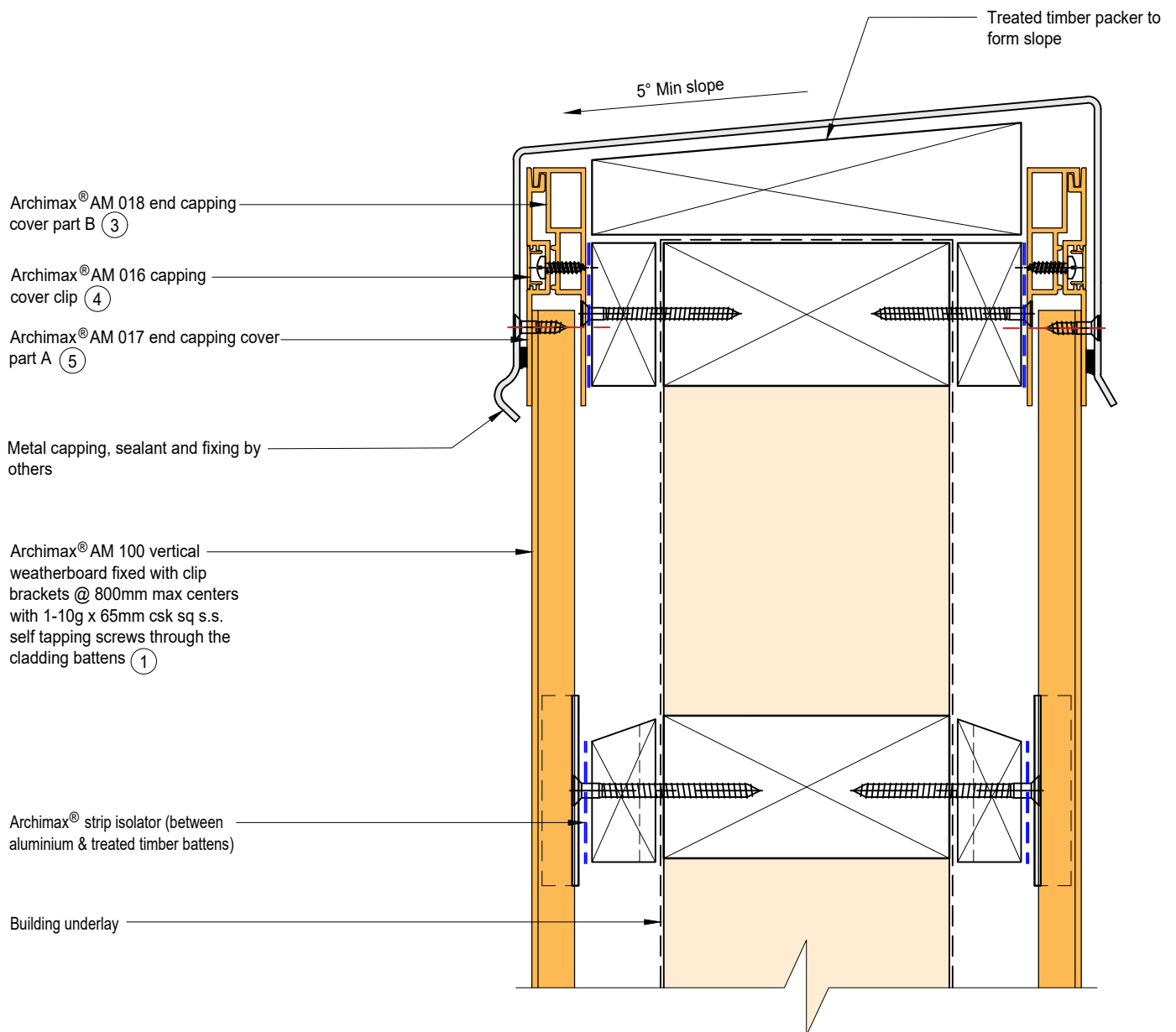


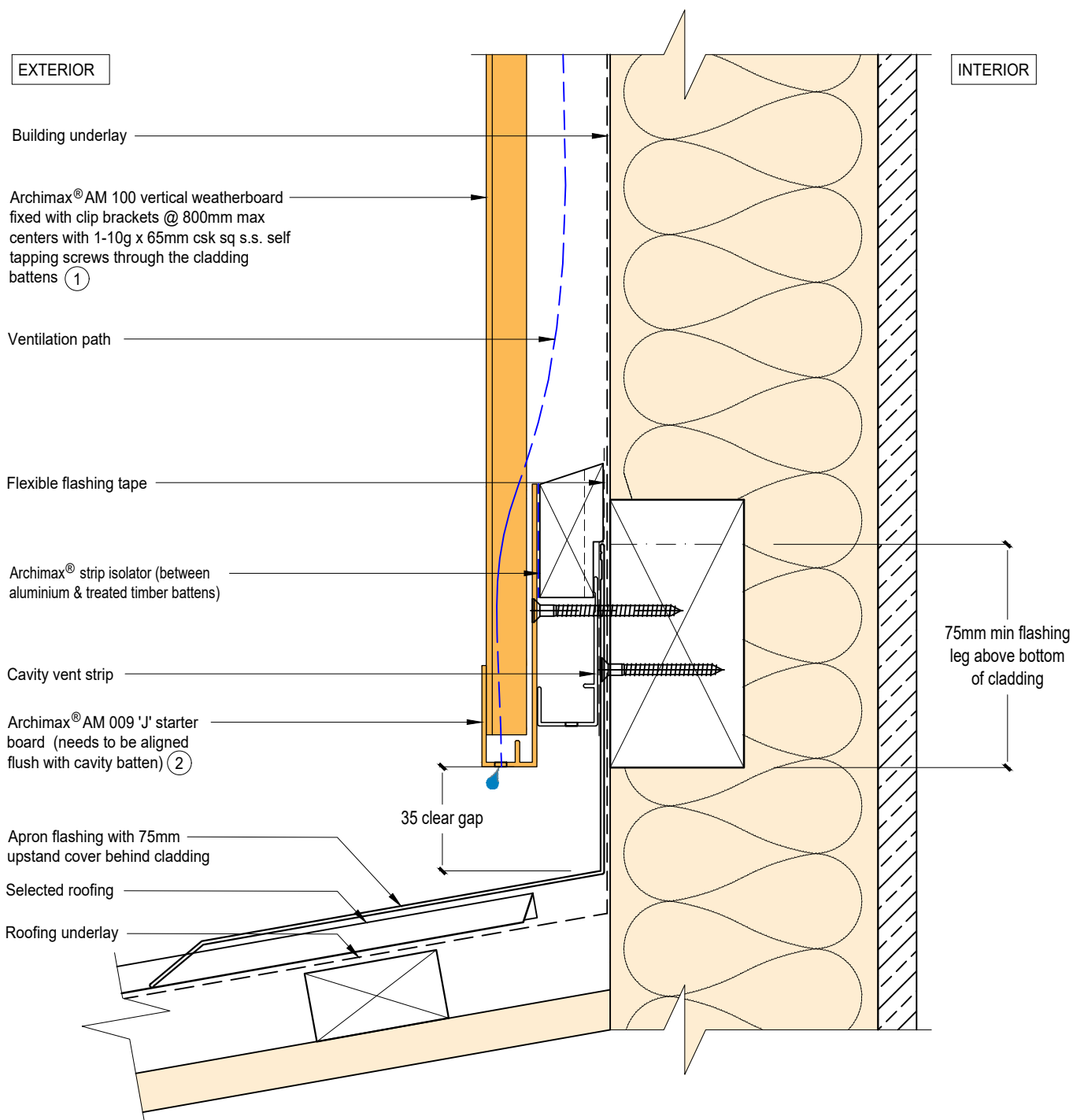
**NOTE:**

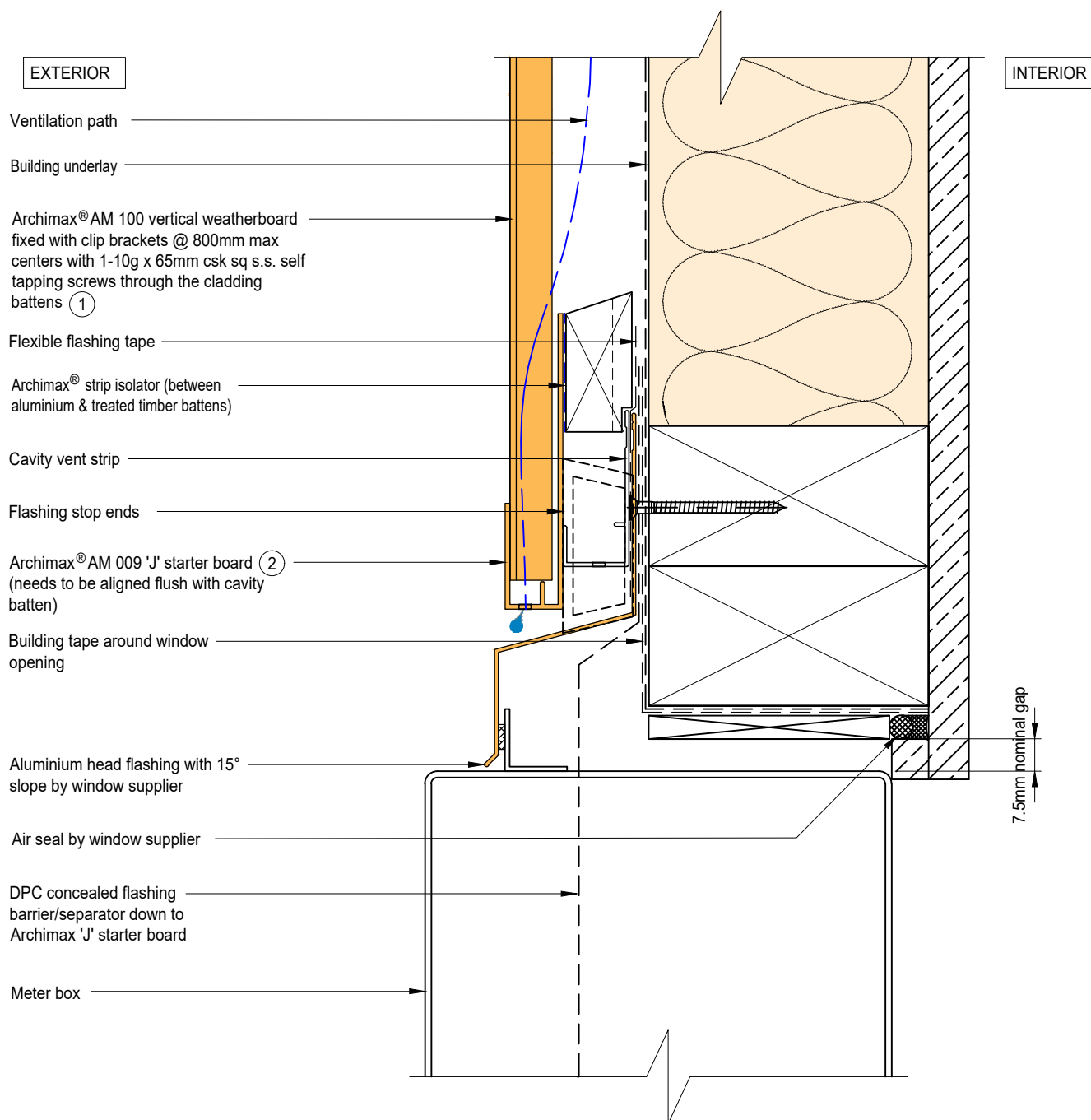
1. For vertical cladding more than 4 meters, secure 1 screw at the top for every meter of width. If it exceeds 6 meters, fix at both top and middle with one screw each.





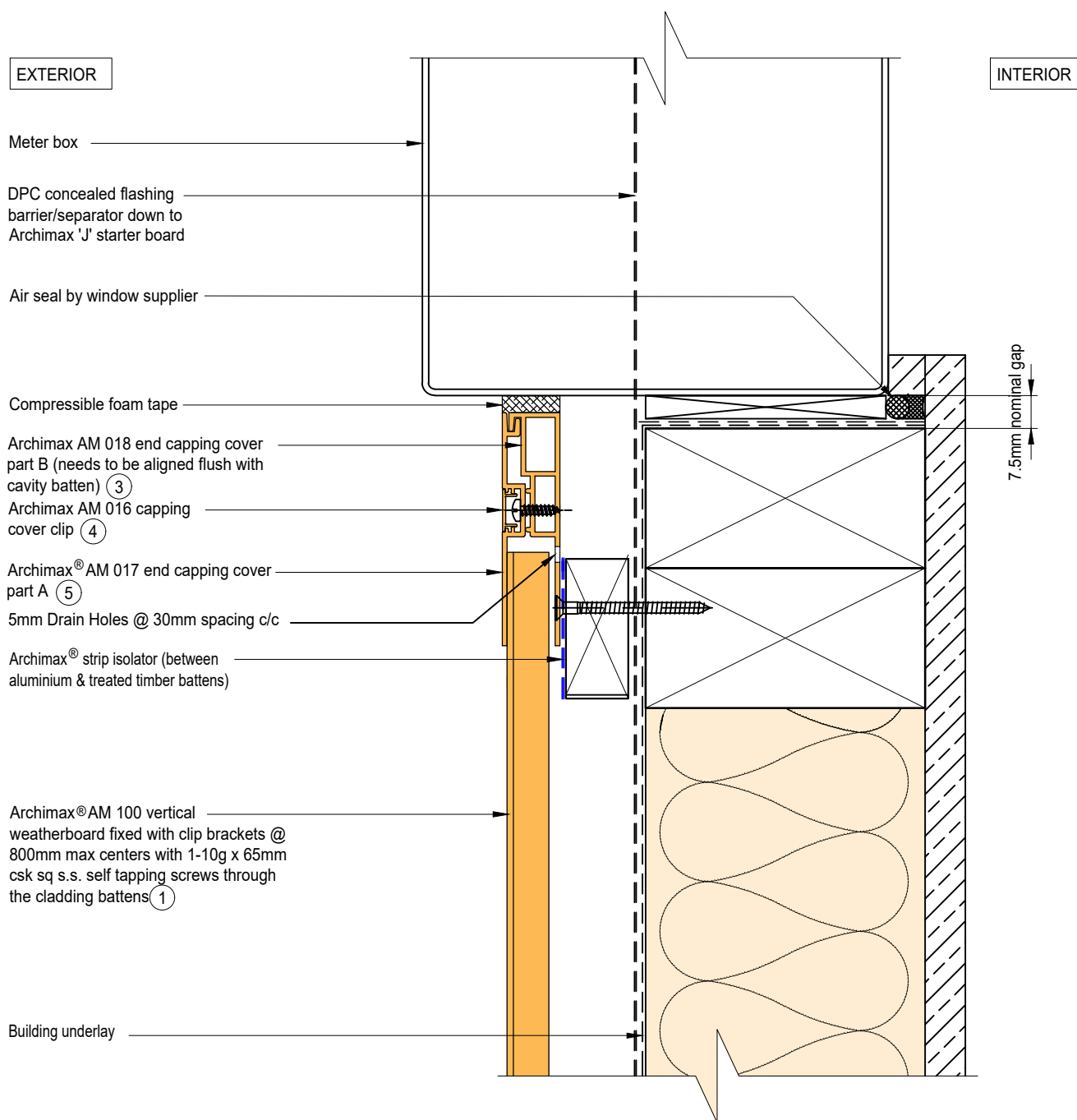




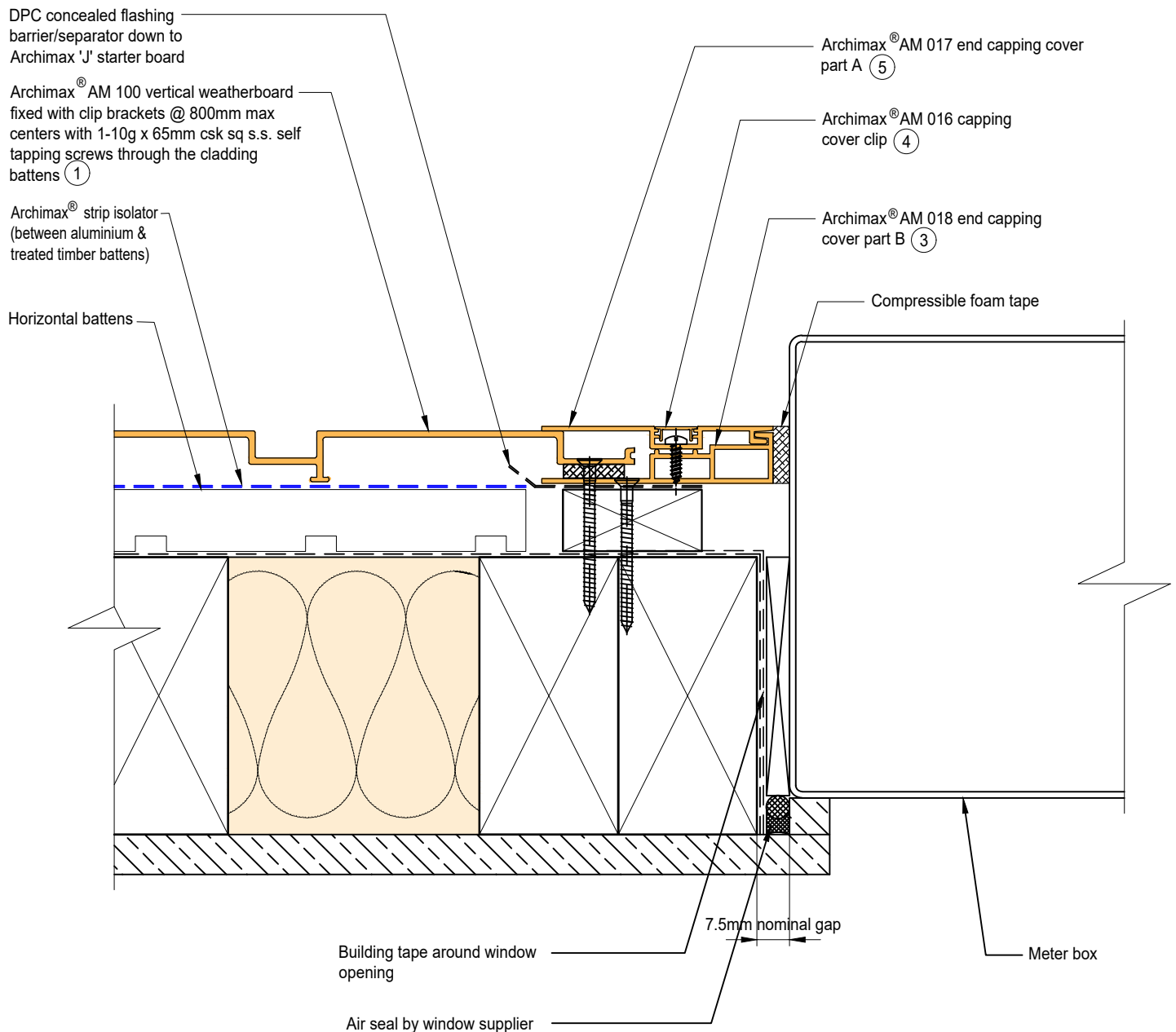


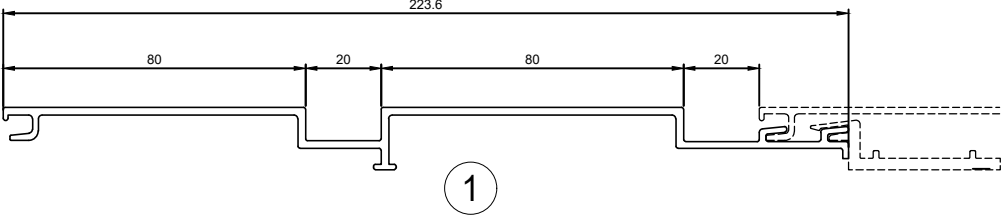
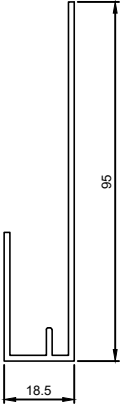
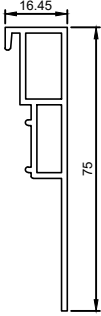
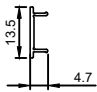
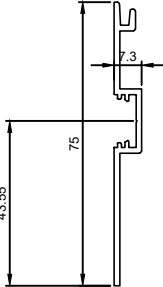
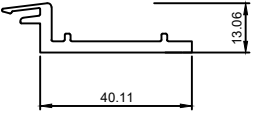
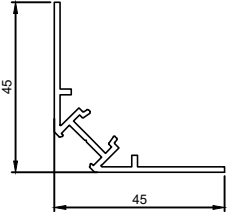
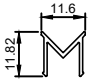
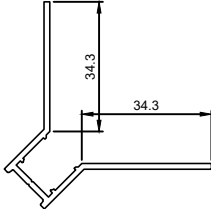

NOTE:  
STOP ENDS TO BE INSTALLED AT FLASHING ENDS









				
AM 100 Archimax Horizontal/Vertical Weatherboard				
				
AM 009	AM 018	AM 016	AM 017	AM 050
"J" Starter Board	End capping part B	Jointer / Jamb / Sill capping cover clip	End Capping part A	Clip Bracket
				
AM 019	AM 023	AM 022	AM 020	
Internal/External corner part A	Internal Corner cover clip	Internal Corner part B	External Corner cover clip	