



ARCHIMAX

ALUMINIUM CLADDING SYSTEM

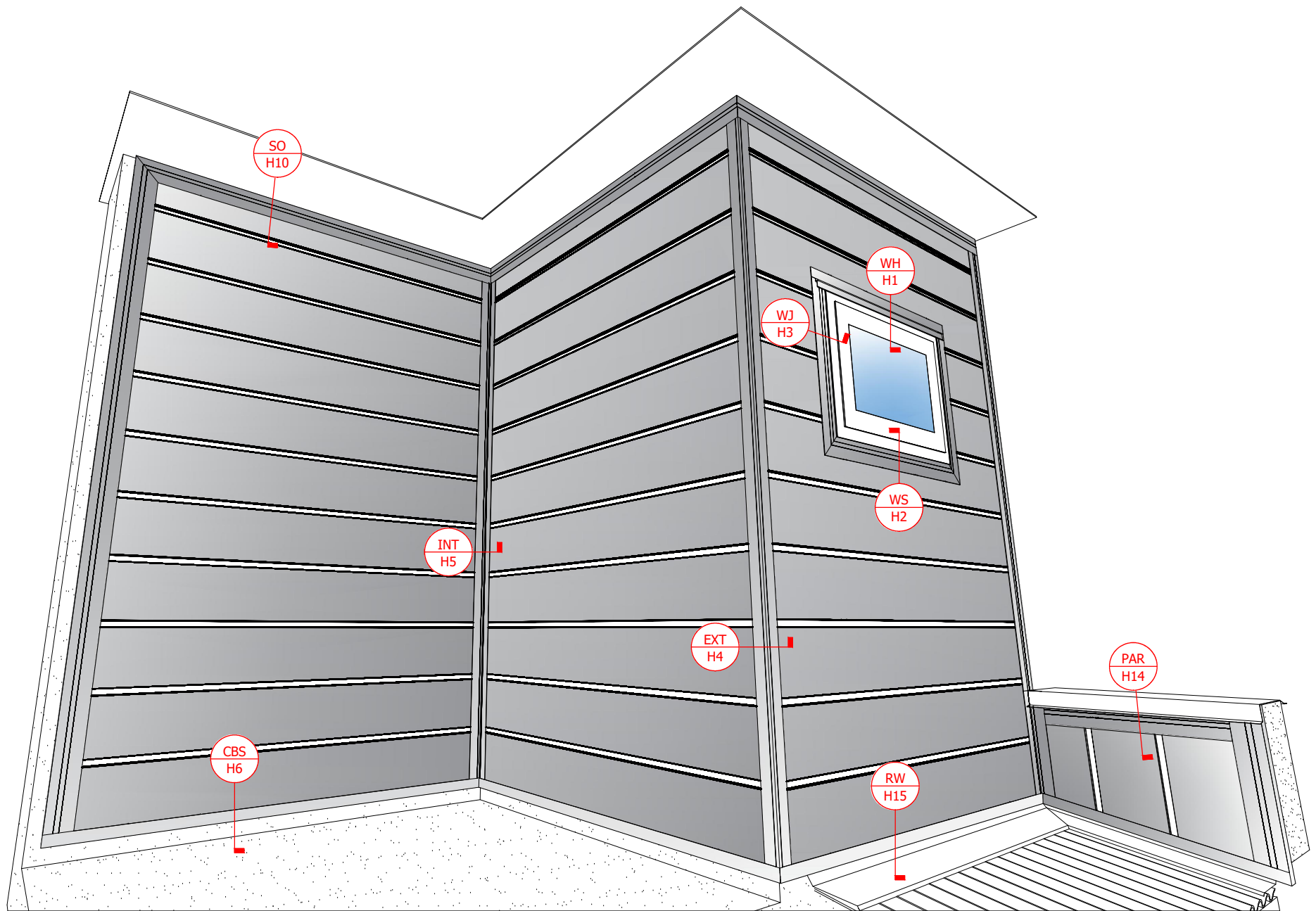
Creating more durable building envelopes

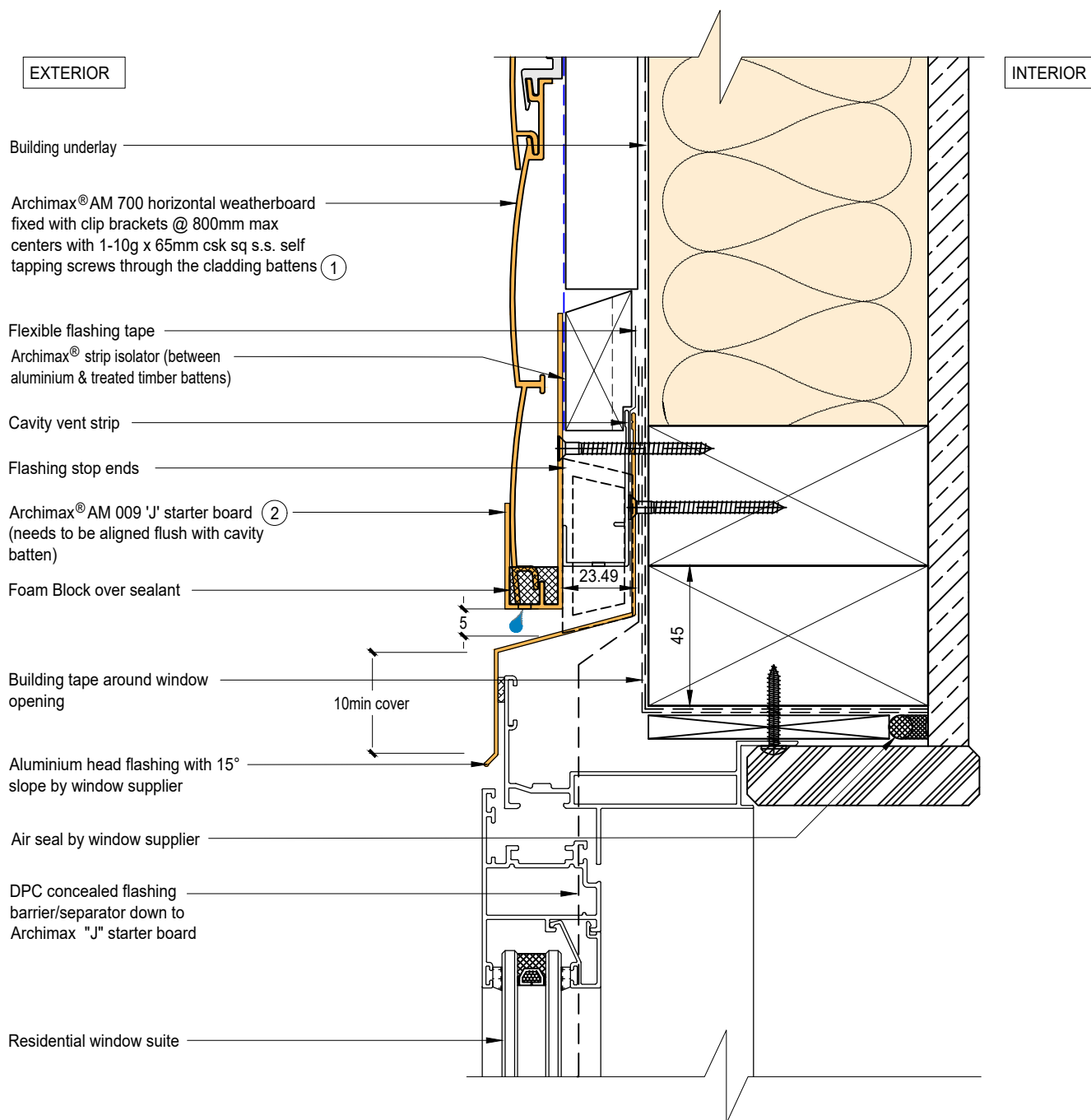
Archimax® Aluminium Cladding System AM700 Horizontal Profile – Installation details

| Drawing No. | Rev. | Description |
|-------------|------|--|
| AM-WH-H1 | E | Archimax® Window Head Detail |
| AM-WS-H2 | E | Archimax® Window Sill Detail |
| AM-WJ-H3 | E | Archimax® Window Jamb Detail |
| AM-EXT-H4 | E | Archimax® External Corner Detail |
| AM-INT-H5 | E | Archimax® Internal Corner Detail |
| AM-CBS-H6.1 | E | Archimax® Concrete Floor Board Starter Detail - Timber |
| AM-CBS-H6.2 | E | Archimax® Concrete Floor Board Starter Detail - Fire Wall |
| AM-HJ-H7 | E | Archimax® Horizontal Joint Detail |
| AM-DJ-H8 | E | Archimax® Deck Junction Detail |
| AM-PP-H9a | E | Archimax® Pipe Penetration - Plan View Detail |
| AM-PP-H9b | E | Archimax® Pipe Penetration - Section View Detail |
| AM-SO-H10 | E | Archimax® Soffit Detail |
| AM-SO-H11.1 | E | Archimax® Facia, Soffit & Wall Detail |
| AM-SO-H11.2 | E | Archimax® Facia, Soffit & Wall (90° Soffit / Wall) Detail |
| AM-SO-H11.3 | E | Archimax® Fascia, Board Soffit & Wall Detail |
| AM-NSO-H12 | E | Archimax® Non - Soffit Detail |
| AM-BJ-H13 | E | Archimax® Internal Corner Junction Detail |
| AM-PAR-H14 | E | Archimax® Parapet with Cavity Detail |
| AM-RW-H15 | E | Archimax® Lower Roof Wall Junction Detail |
| AM-MB-H16 | E | Archimax® Meter Box Head Detail |
| AM-MB-H17 | E | Archimax® Meter Box Sill Detail |
| AM-MB-H18 | E | Archimax® Meter Box Jamb Detail |
| AM-VJ-H19 | E | Archimax® Vertical Joint Detail |



AM700
coverage: 140mm

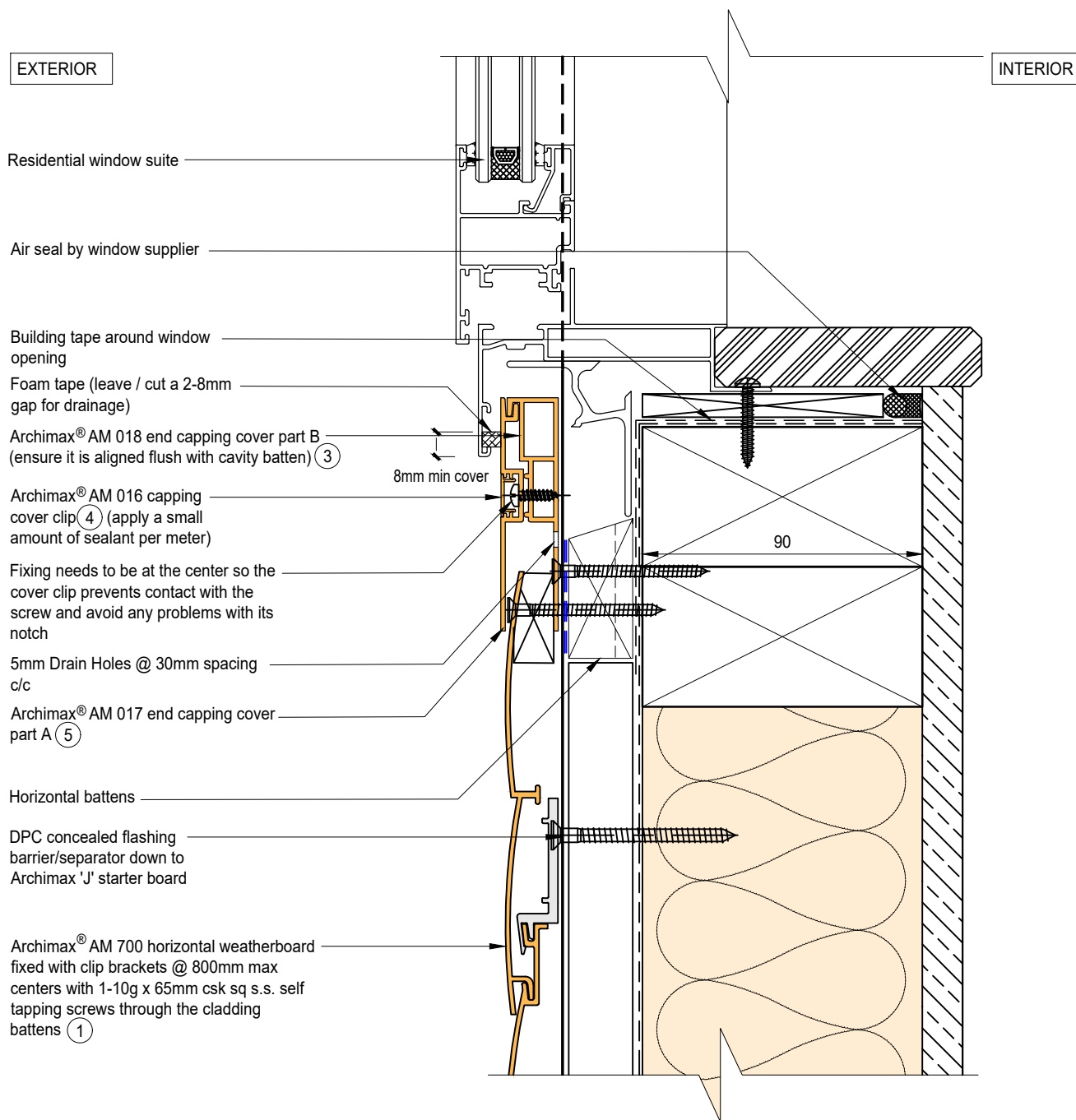




NOTE:

1. Stop ends to be installed at flashing ends.
2. Minimum Clearance between the AIR BARRIER and WINDOW JOINERY to be 45mm. Window Joinery should not be permanently fixed until cladding installed.
3. Sealant on each ends of the "J" starter board to prevent water going into cavity.
4. Timber Cavity Batten at 800mm max spacing.
5. Secure the AM029 clip with 1 screw for standard use, or 2 screws for added support



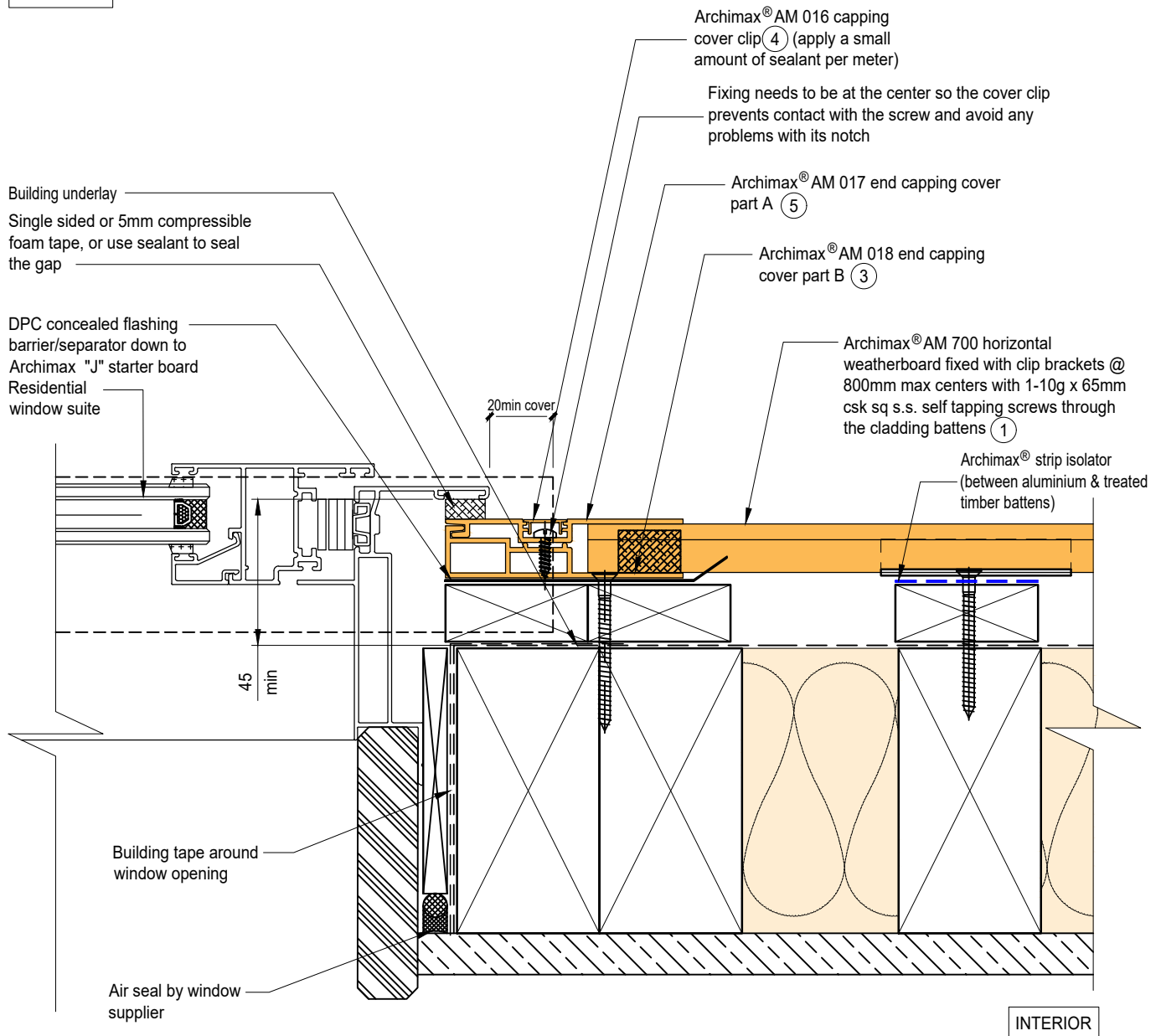


NOTE:

1. Minimum Clearance between the AIR BARRIER and WINDOW JOINERY to be 45mm. Window Joinery should not be permanently fixed until cladding installed.
2. Apply a small amount of sealant to every meter of the AM016 cover clip. Report to Archimax if AM016 cover clips are loose or tight. Do not force to install.
3. Timber Cavity Batten at 800mm max spacing.
4. Secure the AM029 clip with 1 screw for standard use, or 2 screws for added support



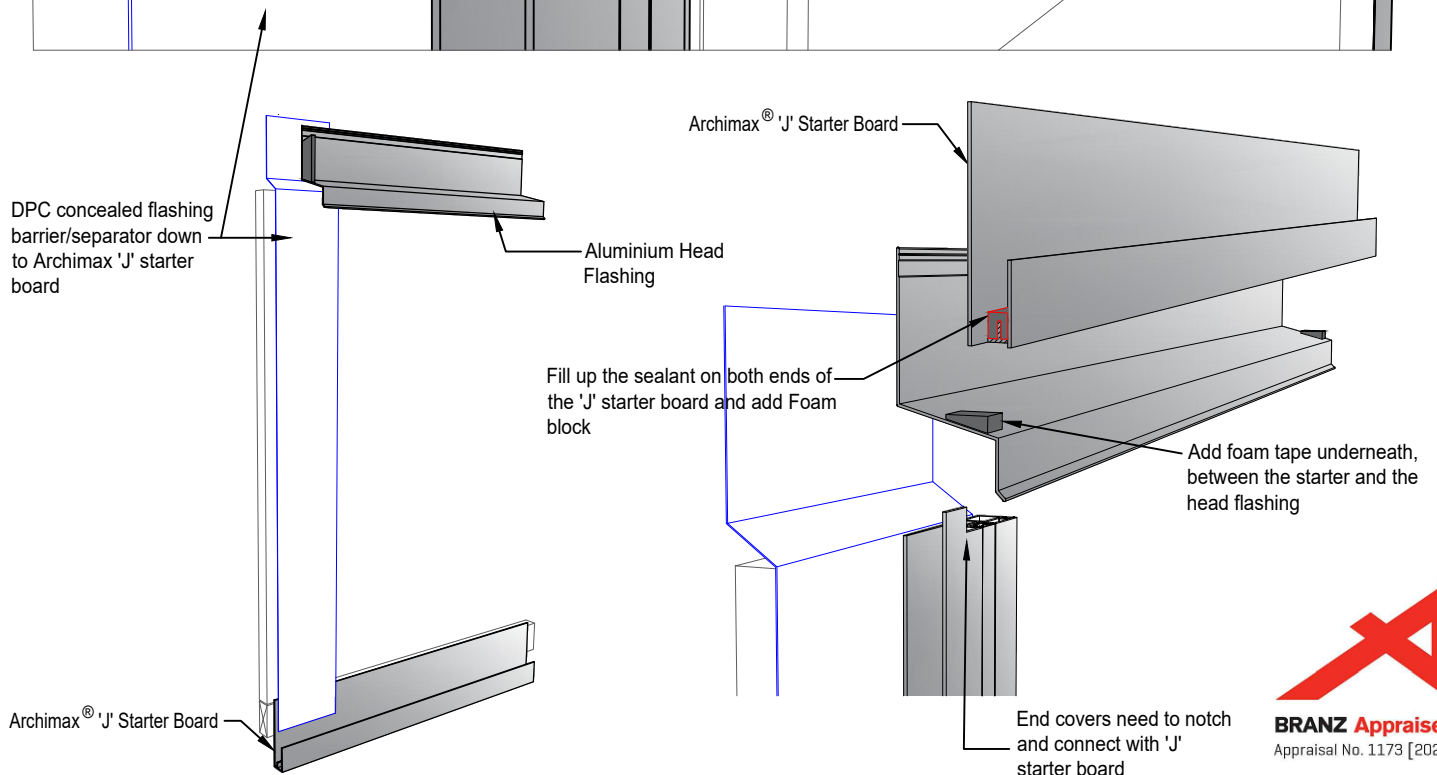
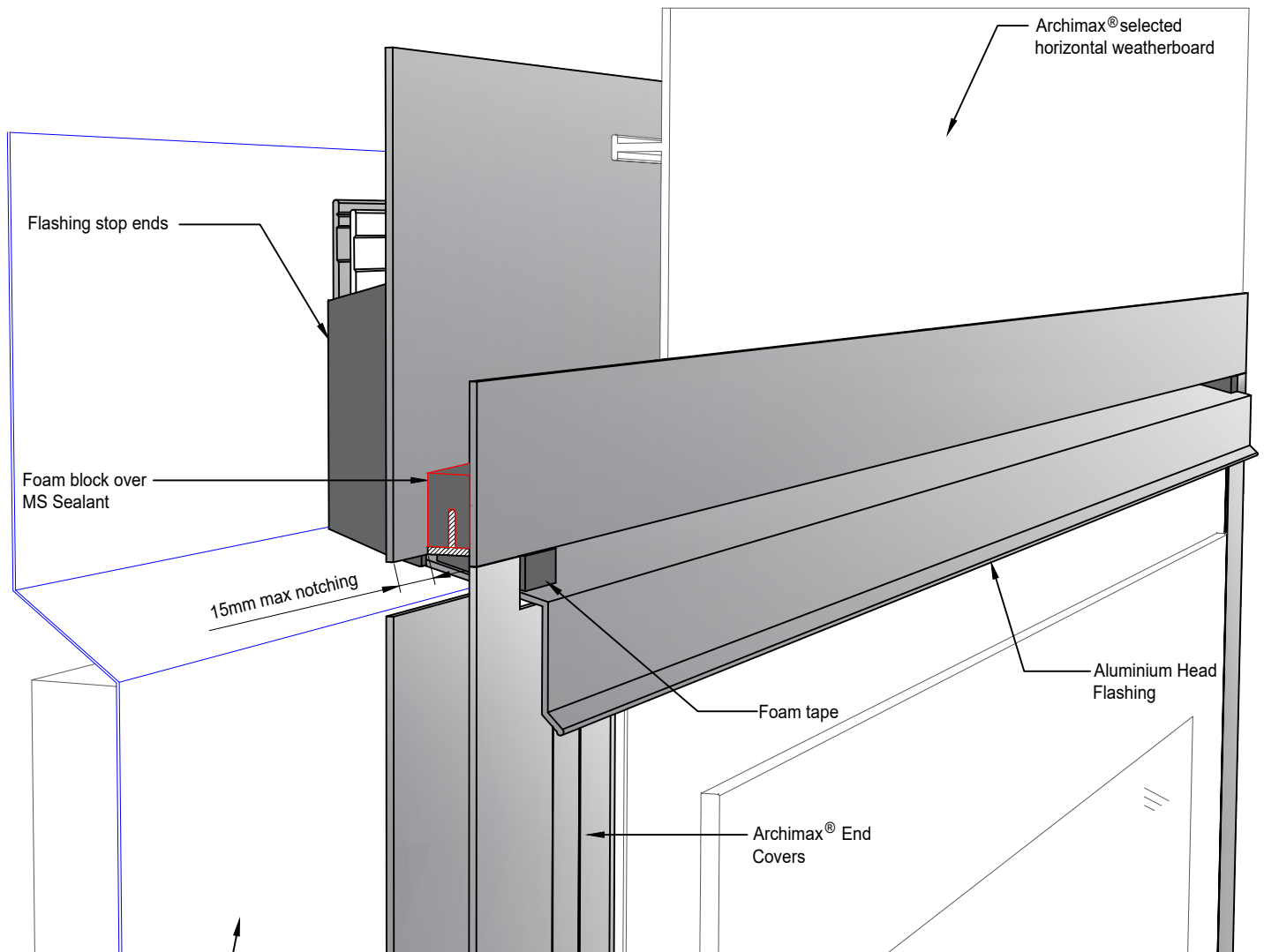
EXTERIOR

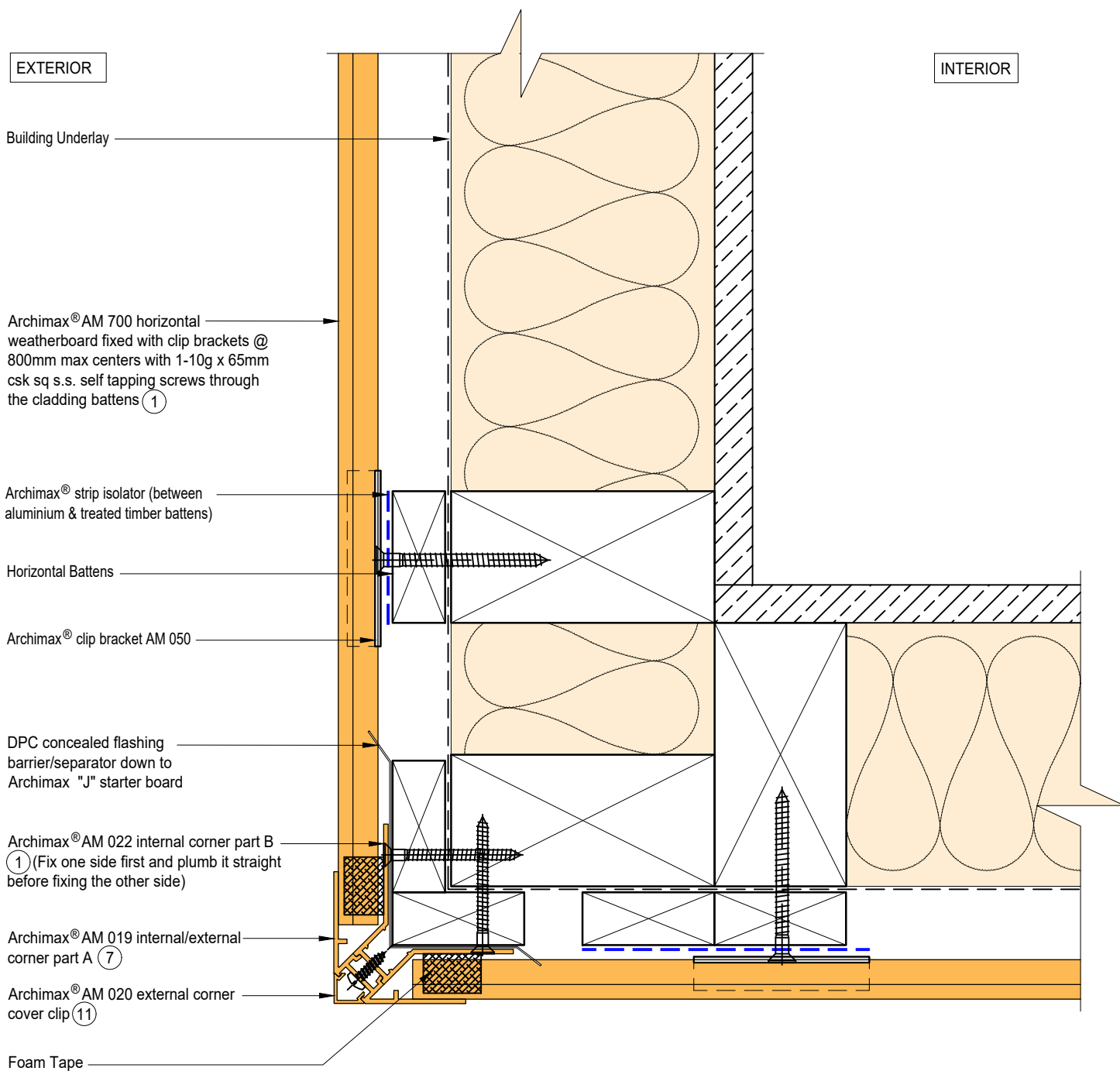


NOTE:

1. Minimum Clearance between the AIR BARRIER and WINDOW JOINERY to be 45mm. Window Joinery should not be permanently fixed until cladding installed.
2. Ideally, use 5mm compressible foam tape, or use sealant to seal the gap between window frame and Archimax cladding depending on the site situation.
3. Apply a small amount of sealant to every meter of the AM016 cover clip. Report to Archimax if AM016 cover clips are loose or tight. Do not force to install.
4. Timber Cavity Batten at 800mm max spacing.
5. Secure the AM029 clip with 1 screw for standard use, or 2 screws for added support






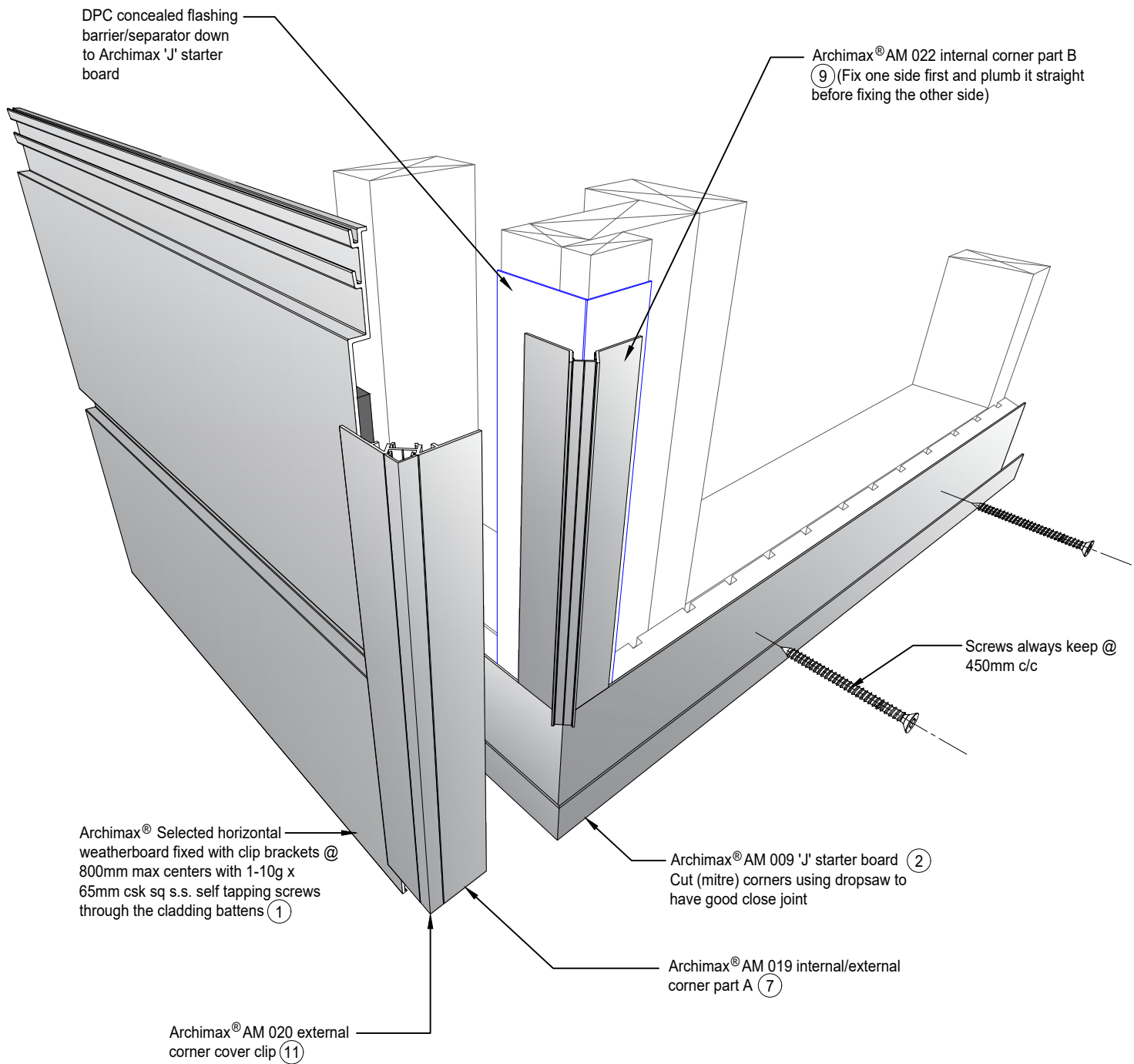


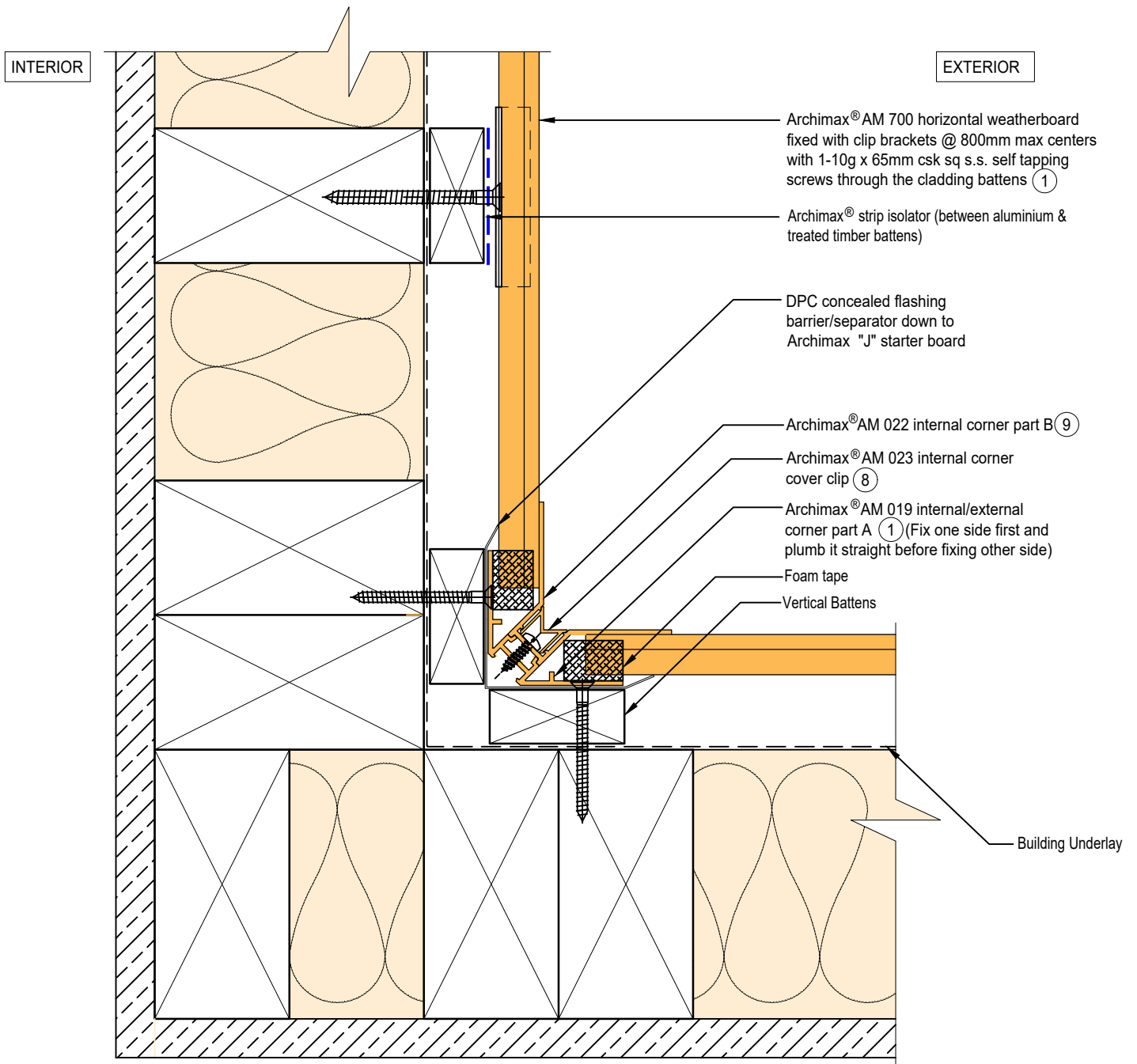
NOTE:

1. Fix the External Corner part B on one side first and plumb it straight before fixing the other side to avoid twisting.
2. Timber Cavity Batten at 800mm max spacing.
3. Secure the AM029 clip with 1 screw for standard use, or 2 screws for added support



| | | | | |
|---|--|--|---|-----------------------|
|  <p>ARCHIMAX ALUMINIUM CLADDING SYSTEM <i>Creating more durable building envelopes</i> www.archimax.co.nz</p> | <p>System AM 700 - HORIZONTAL WEATHERBOARD</p> | <p>Detail ARCHIMAX® EXTERNAL CORNER DETAIL</p> | <p>Drawing No. Rev. AM-EXT-H4 E</p> | |
| <p>This drawing is the copyright of Archimax Limited. Modification of details for job specification requirements must be approved by Archimax Ltd. The building designer is ultimately responsible to ensure all building work is designed and constructed according to building code requirements, best code of practice industry guidelines. All components must be supplied by Archimax. Archimax reserves the right to alter or upgrade details at any time without prior notice.</p> | | | <p>Scale 1:2</p> | <p>Date OCT24</p> |

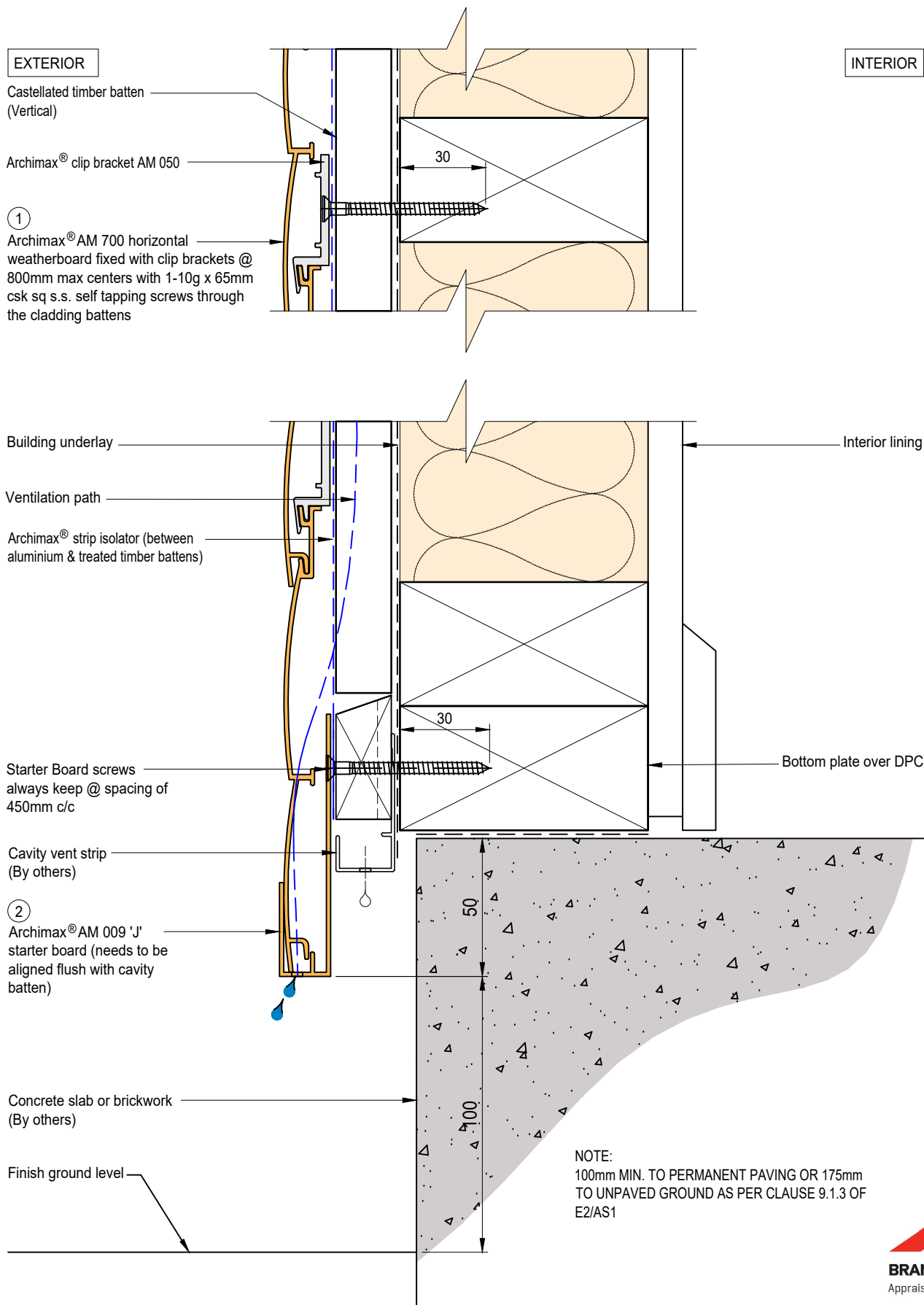




NOTE:

1. Fix the AM 019 internal/external corner part A on one side first and plumb it straight before fixing the other side to avoid twisting.
2. Timber Cavity Batten at 800mm max spacing.
3. Secure the AM029 clip with 1 screw for standard use, or 2 screws for added support





EXTERIOR

Archimax® Aluminium Batten
AMB 01 (vertical)

Archimax® clip bracket AM 050

INTERIOR

Rigid air barrier
(FRR)

①
Archimax® AM 700 horizontal
weatherboard fixed with clip brackets @
800mm max centers with 1-10g x 65mm
csk sq s.s. self tapping screws through
the cladding battens

Starter Board screws
always keep @ spacing of
450mm c/c

Cavity vent strip
(By others)

②
Archimax® AM 009 'J'
starter board (needs to be
aligned flush with cavity
batten)

Concrete slab or brickwork
(By others)

Finish ground level

Interior lining

Bottom plate over DPC

NOTE:
100mm MIN. TO PERMANENT PAVING OR 175mm
TO UNPAVED GROUND AS PER CLAUSE 9.1.3 OF
E2/AS1

EXTERIOR

INTERIOR

Building underlay

Archimax® AM 700 horizontal weatherboard fixed with clip brackets @ 800mm max centers with 1-10g x 65mm csk sq s.s. self tapping screws through the cladding battens ①

Flexible flashing tape

Archimax® strip isolator (between aluminium & treated timber battens)

Cavity vent strip

Archimax® AM 009 'J' starter board ② (needs to be aligned flush with cavity batten)

Inter-Storey flashing stop ends

Archimax® AM 018 end capping cover part B (ensure it is aligned flush with cavity batten) ③

Archimax® AM 016 capping cover clip ④ (apply a small amount of sealant per meter)

Archimax® AM 017 end capping cover part A ⑤

5mm Drain Holes @ 30mm spacing c/c

13

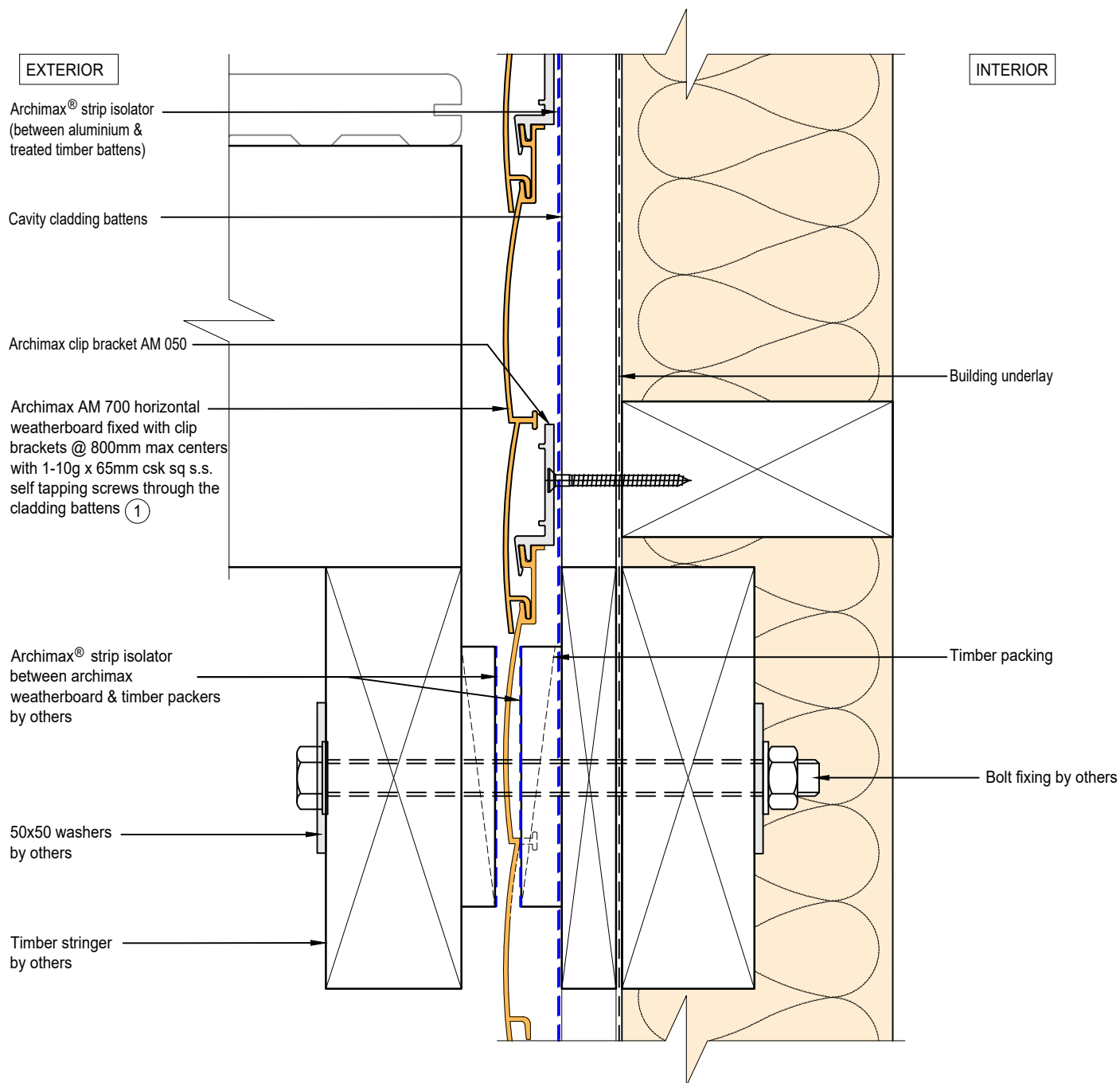
5

21.4

NOTE:

STOP ENDS TO BE INSTALLED AT INTER-STOREY FLASHING ENDS





EXTERIOR

Flexible flashing tape

Sealant around pipe penetration

Building underlay

Vertical battens

Archimax® AM 700 horizontal weatherboard fixed with clip brackets @ 800mm max centers with 1-10g x 65mm csk sq s.s. self tapping screws through the cladding battens ①

DPC concealed flashing barrier/separator down to Archimax "J" starter board

Archimax® strip isolator (between aluminium & treated timber battens)

Archimax® clip bracket AM 050

INTERIOR



EXTERIOR

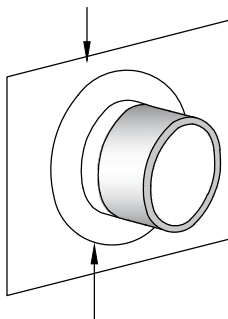
INTERIOR

Archimax® AM 700 horizontal weatherboard fixed with clip brackets @ 800mm max centers with 1-10g x 65mm csk sq s.s. self tapping screws through the cladding battens ①

Archimax® clip bracket AM 050

Vertical battens

DPC concealed flashing barrier/separator down to Archimax "J" starter board



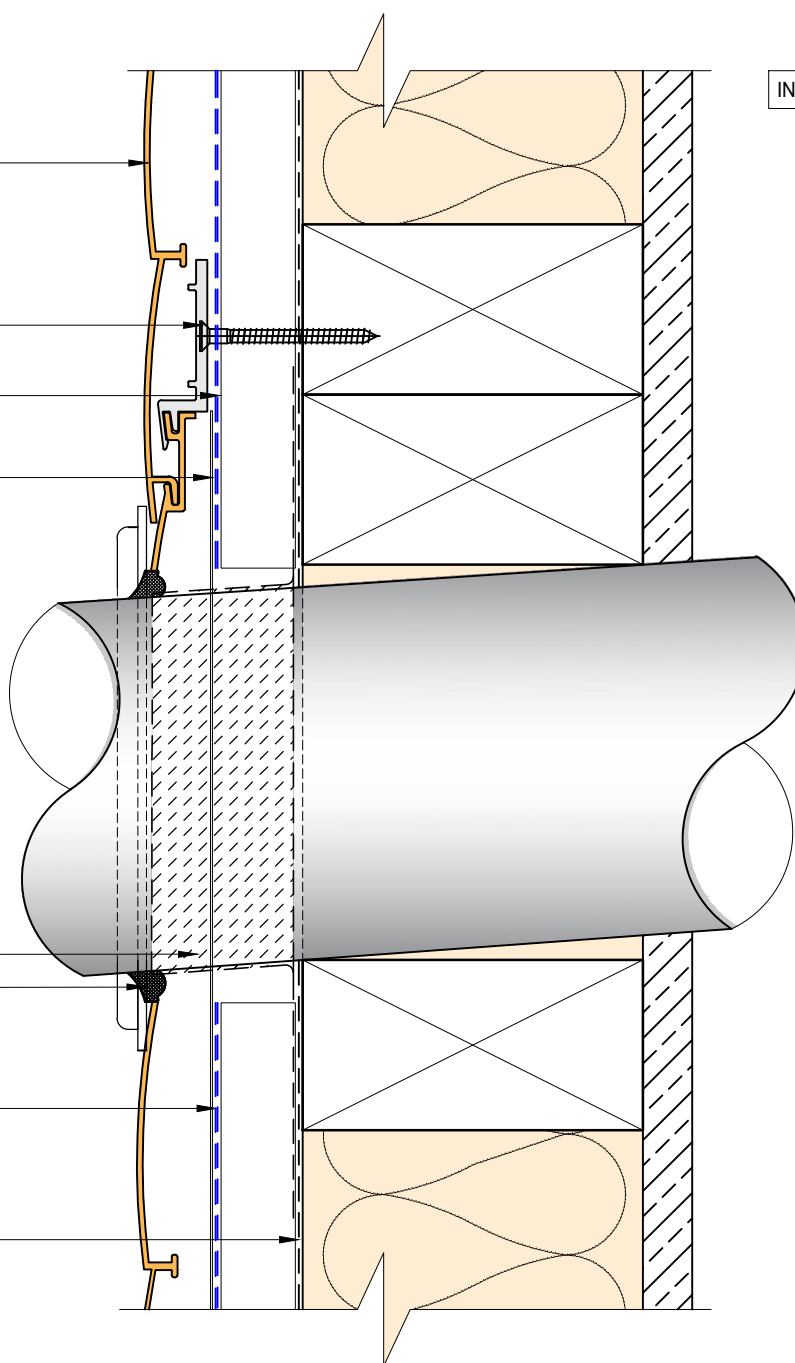
Pipe cover flange bed sealed to Archimax Cladding by others

Flexible flashing tape

Sealant around pipe penetration

Archimax® strip isolator (between aluminium & treated timber battens)

Building underlay



EXTERIOR

INTERIOR

5mm compressible
foam tape, or use
sealant to seal the gap

Archimax® AM 018 end capping
cover part B ③

Archimax® AM 016 capping
cover clip ④

Archimax® AM 017 end capping cover
part A ⑤

Fixing needs to be at the center so the
cover clip prevents contact with the
screw and avoid any problems with its
notch

5mm Drain Holes @ 30mm spacing

c/c
Countersunk screws

- for horizontal cladding above 4 meters, secure 1 screw at the top for every meter of width.
- for horizontal cladding above 6 meters, secure 1 screw at the top & middle for every meter of width.

Horizontal battens

Archimax® AM 700 horizontal weatherboard
fixed with clip brackets @ 800mm max
centers with 1-10g x 65mm csk sq s.s. self
tapping screws through the cladding
battens ①

Archimax® clip bracket AM 050

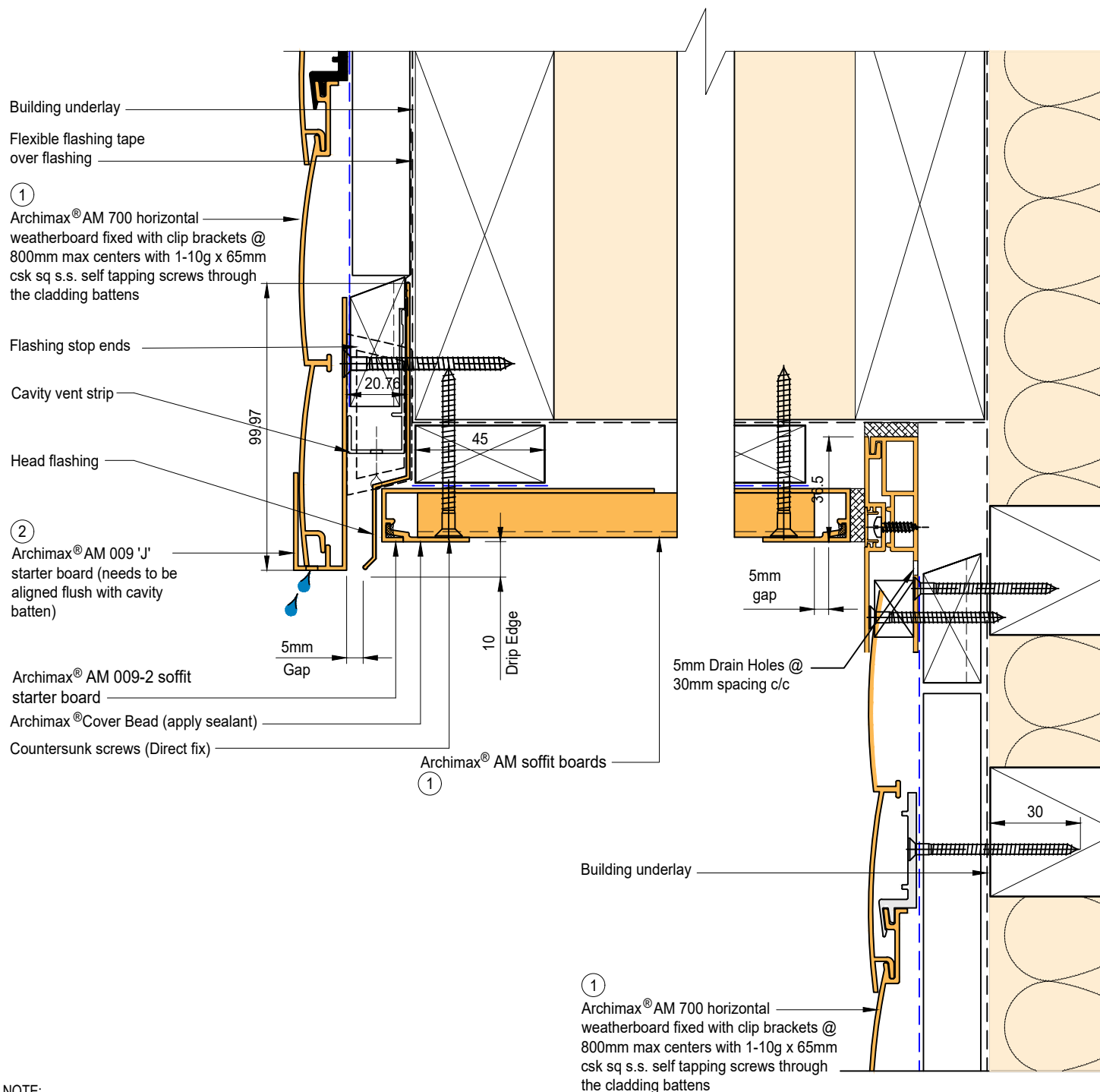
Archimax® strip isolator (between
aluminium & treated timber battens)

Building underlay

NOTE:

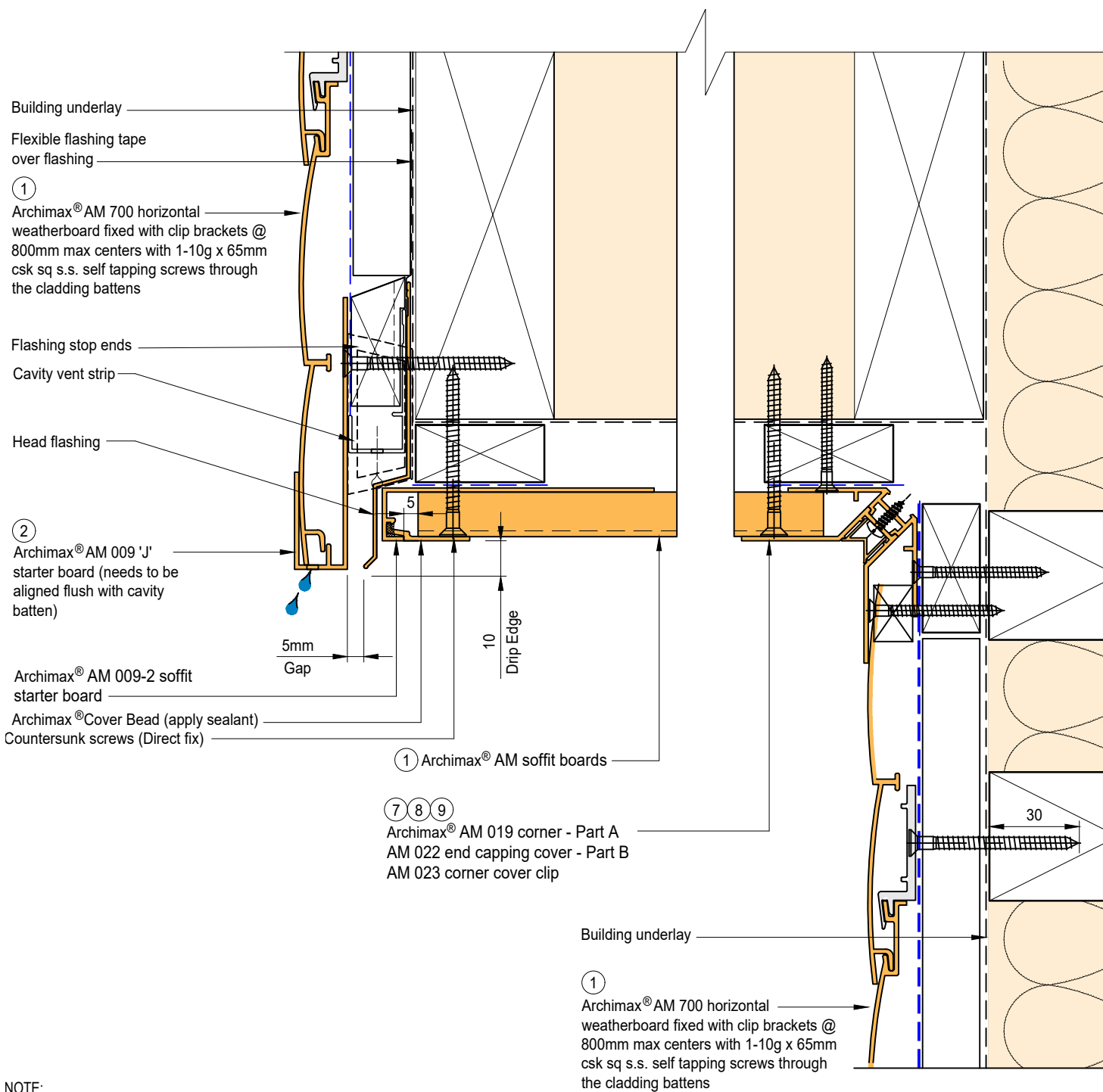
1. Ideally, use 5mm compressible foam tape, or use sealant to seal the gap between soffit and Archimax cladding depending on the site situation.
2. For horizontal cladding more than 4 meters, secure 1 screw at the top for every meter of width. If it exceeds 6 meters, fix at both top and middle with one screw each.
4. Timber Cavity Batten at 800mm max spacing.
5. Secure the AM029 clip with 1 screw for standard use, or 2 screws for added support





NOTE:

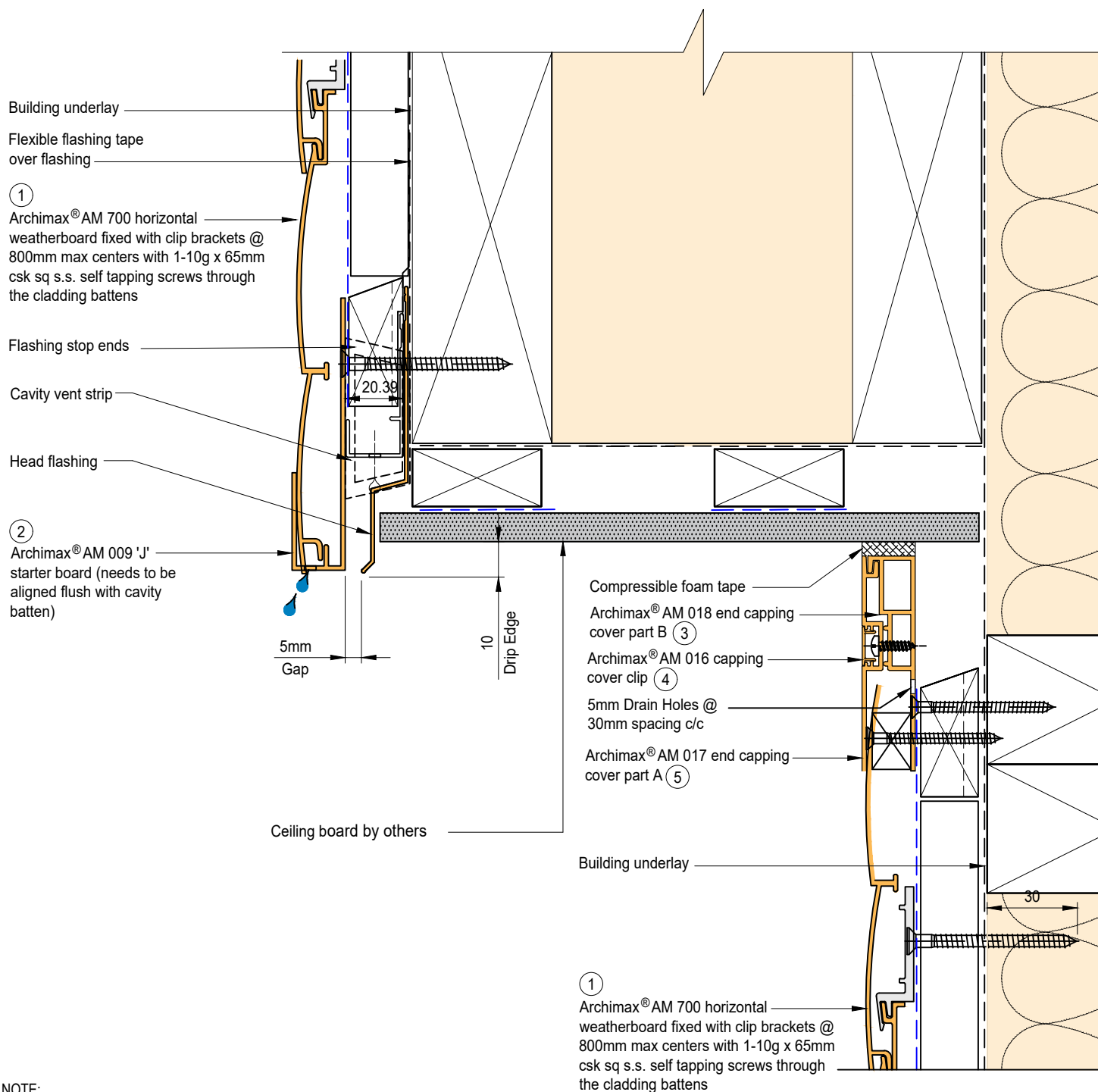
1. Stop ends to be installed at flashing ends.
2. Soffit requires direct fixing without brackets.
3. Timber Cavity Batten at 800mm max spacing.
4. Secure the AM029 clip with 1 screw for standard use, or 2 screws for added support



NOTE:

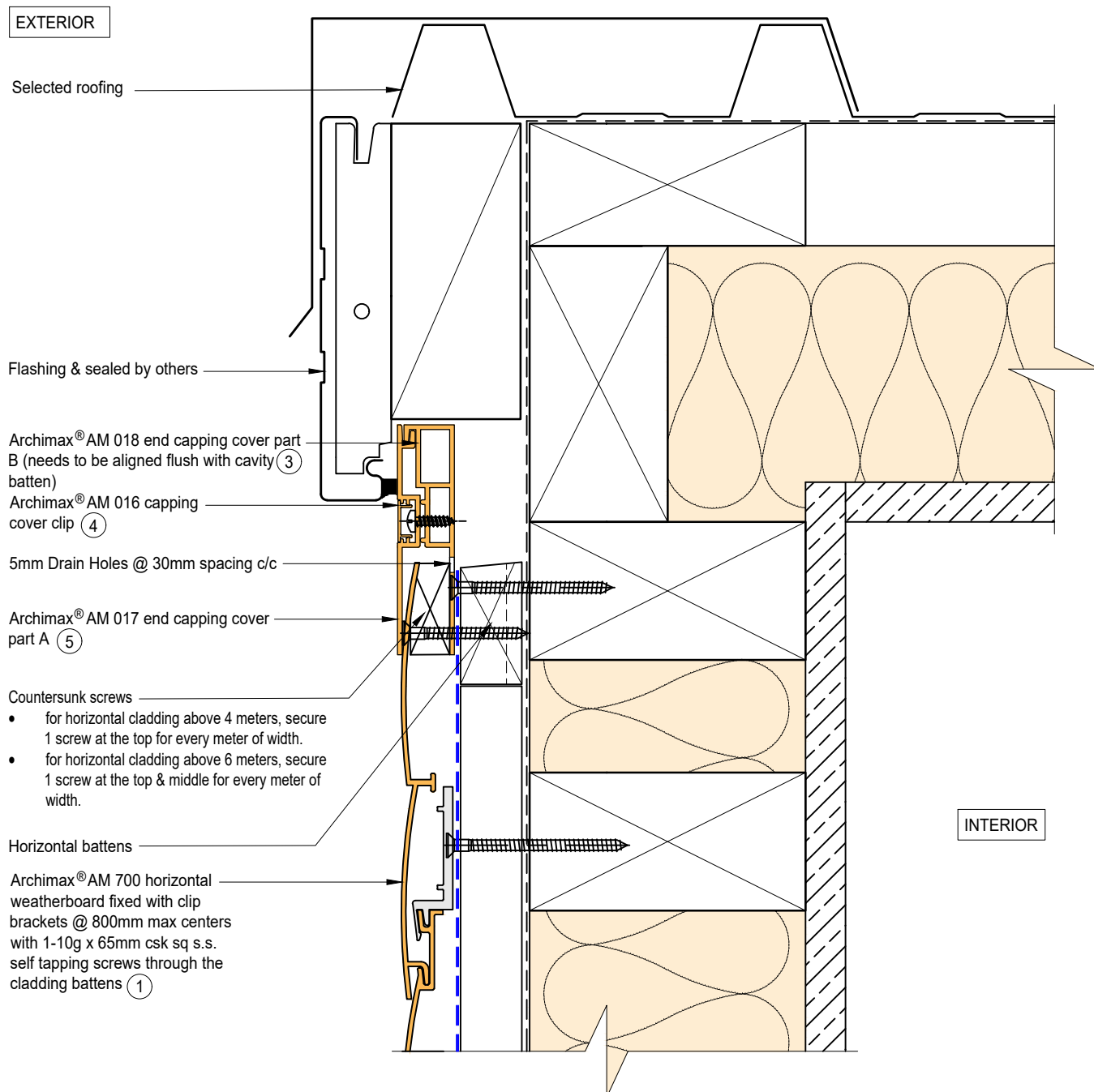
1. Stop ends to be installed at flashing ends.
2. Soffit requires direct fixing without brackets.
3. Timber Cavity Batten at 800mm max spacing.
4. Secure the AM029 clip with 1 screw for standard use, or 2 screws for added support

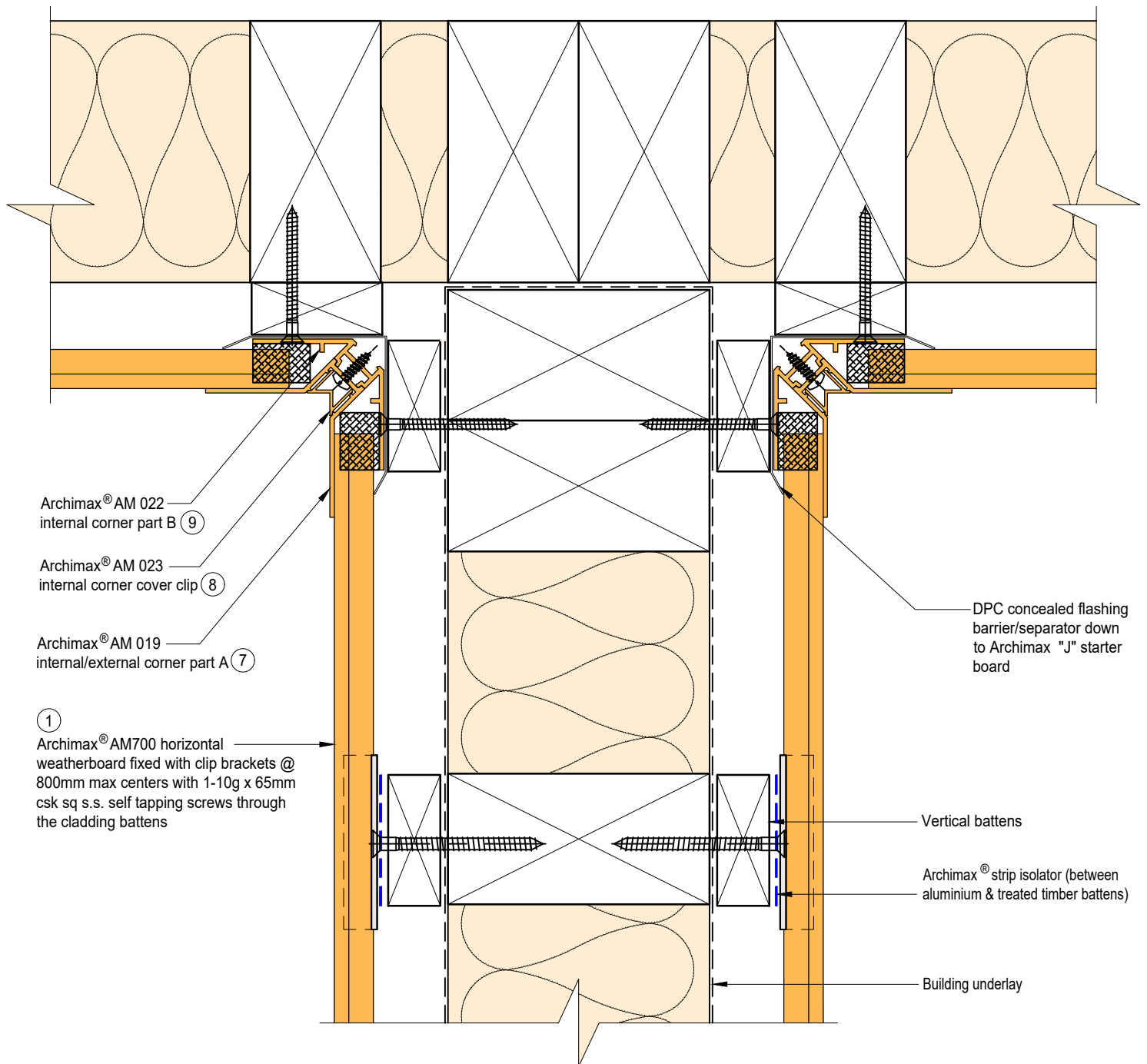


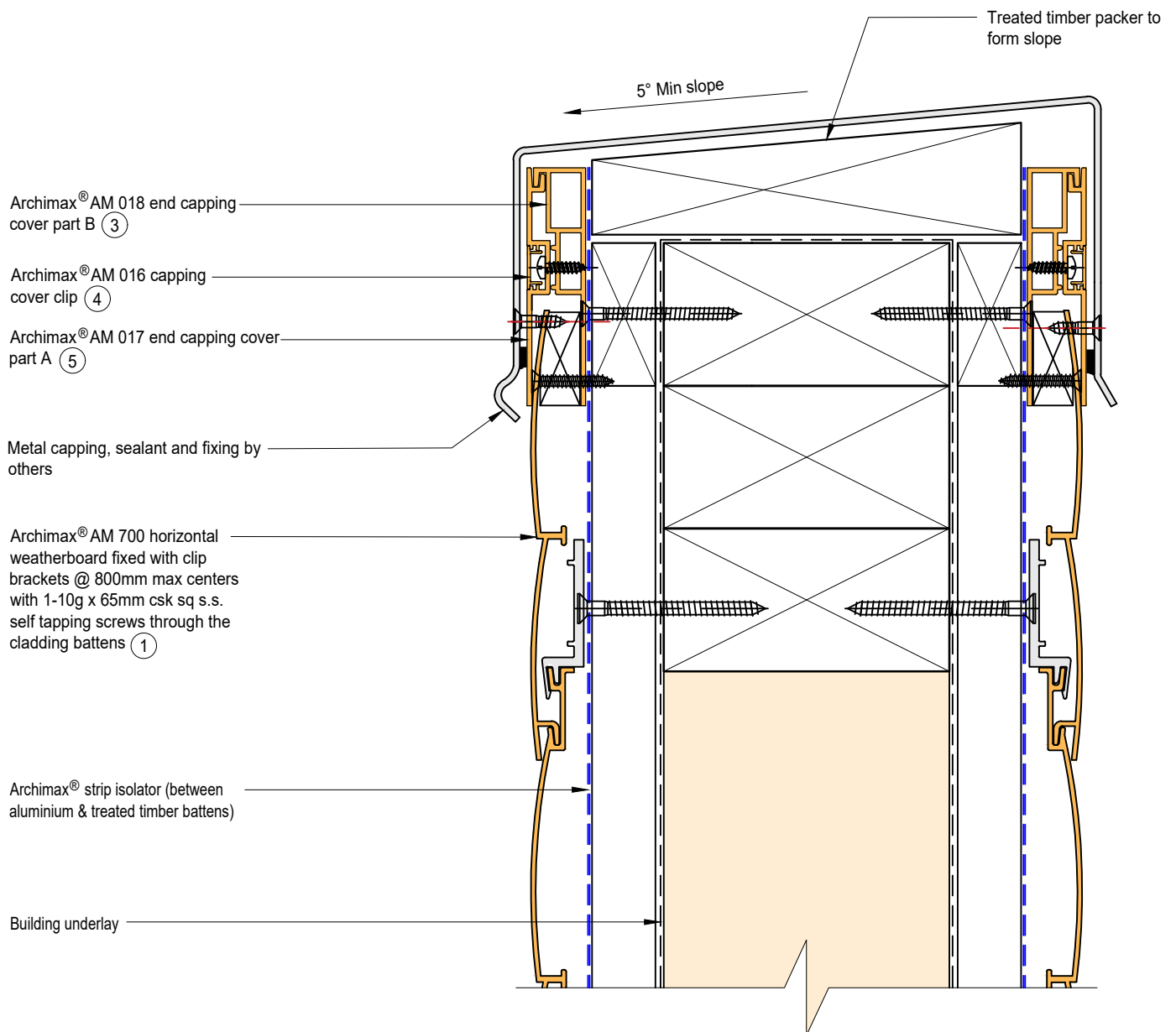


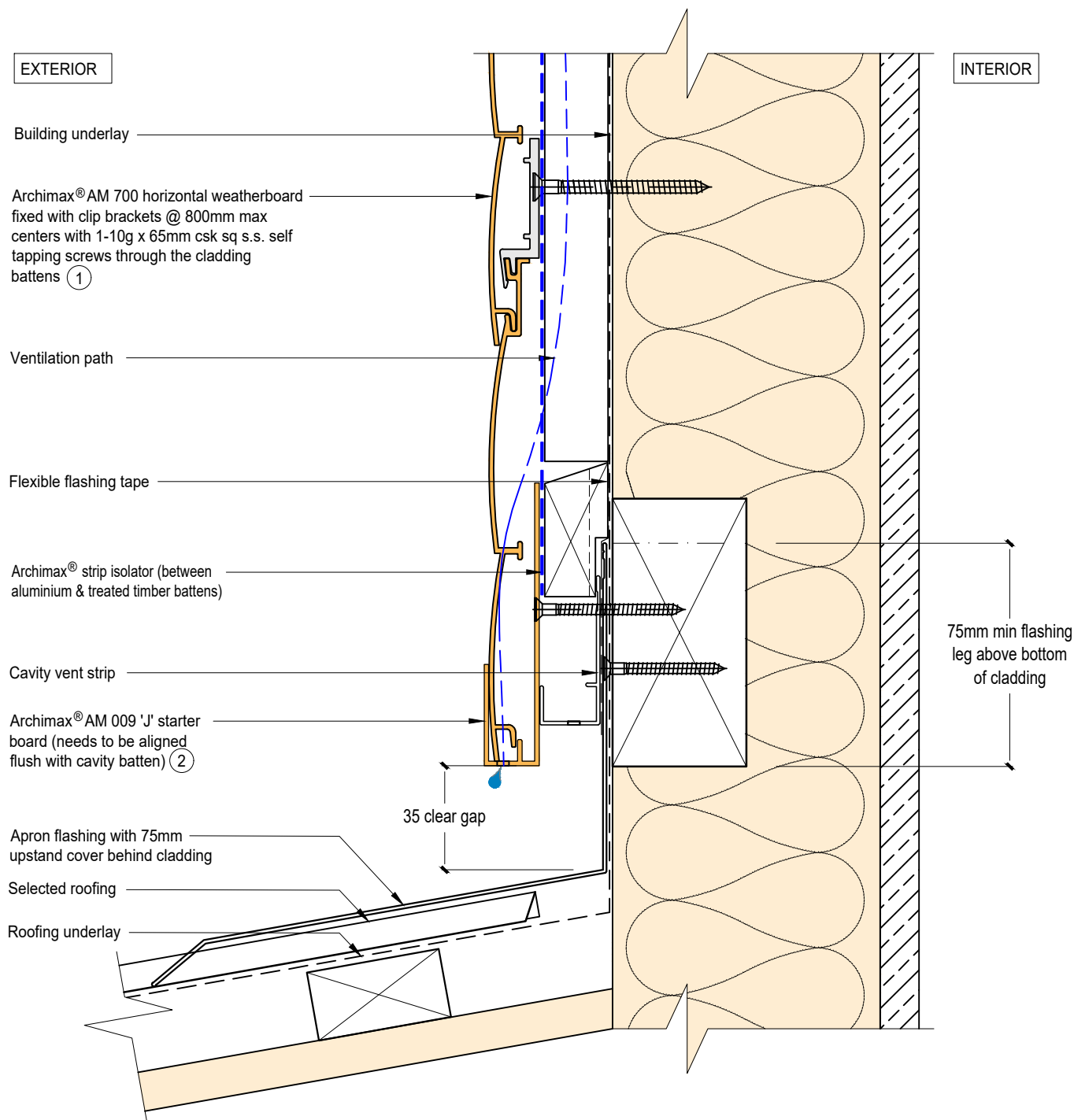
NOTE:
STOP ENDS TO BE INSTALLED AT FLASHING ENDS

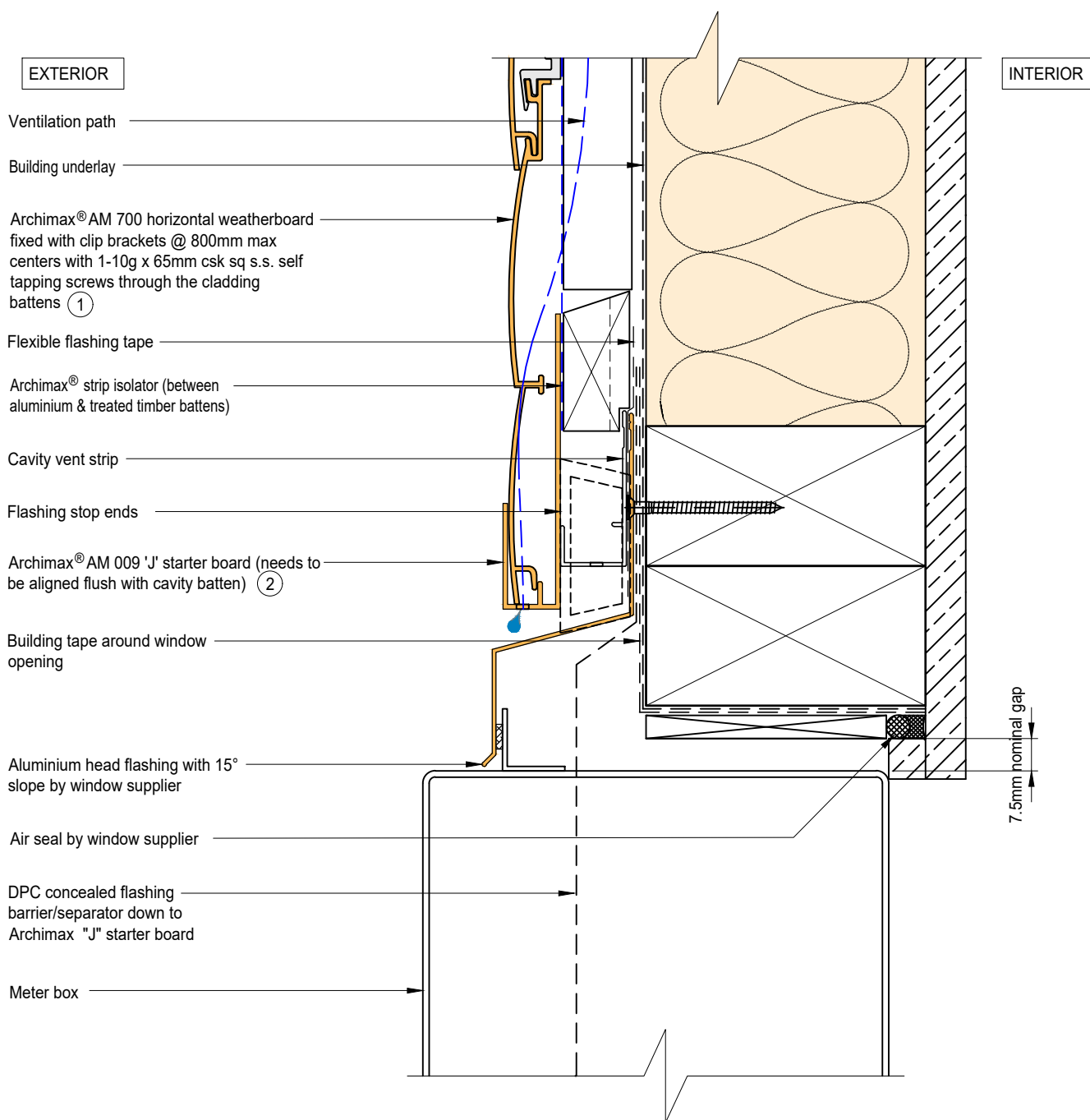






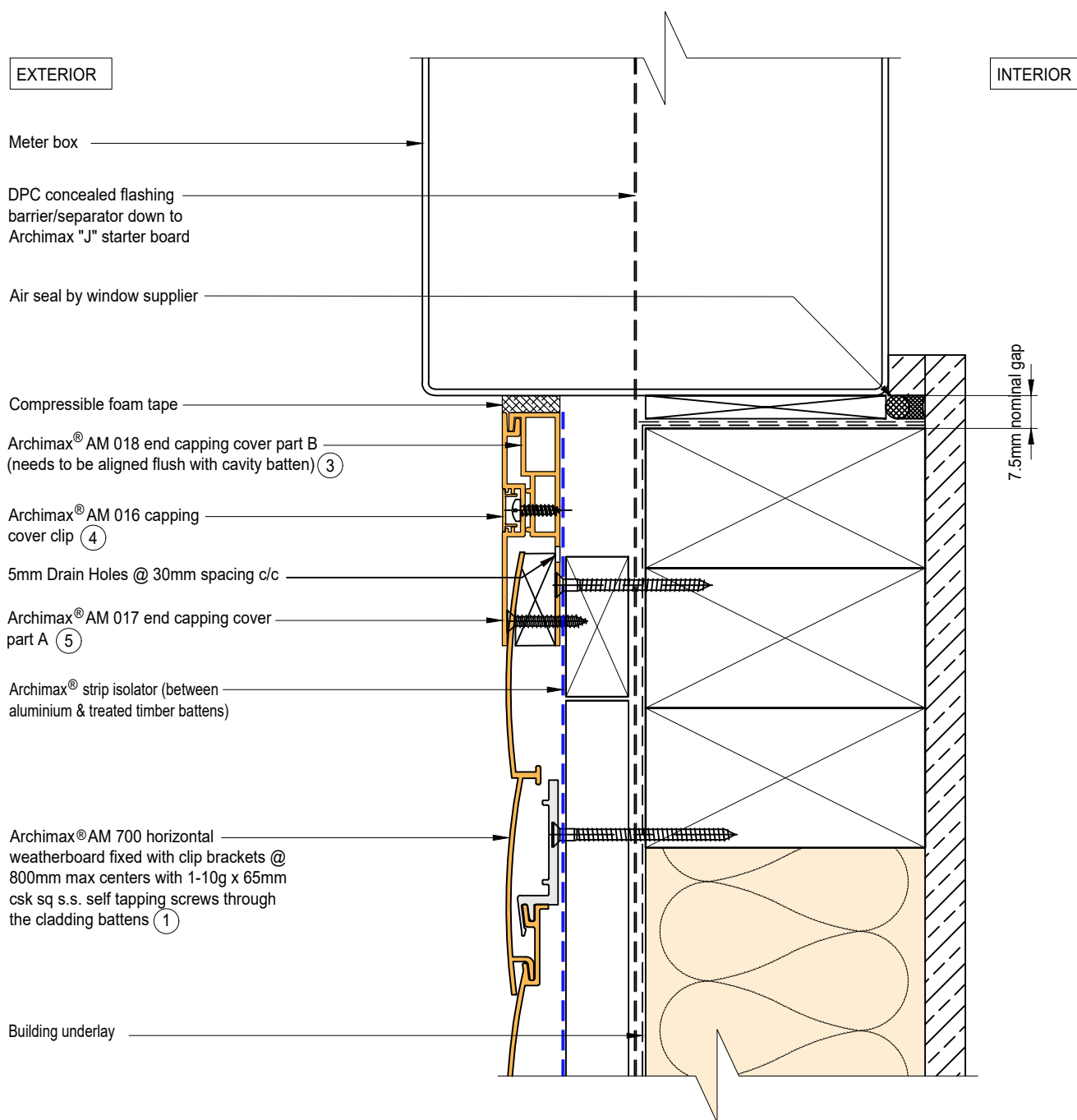


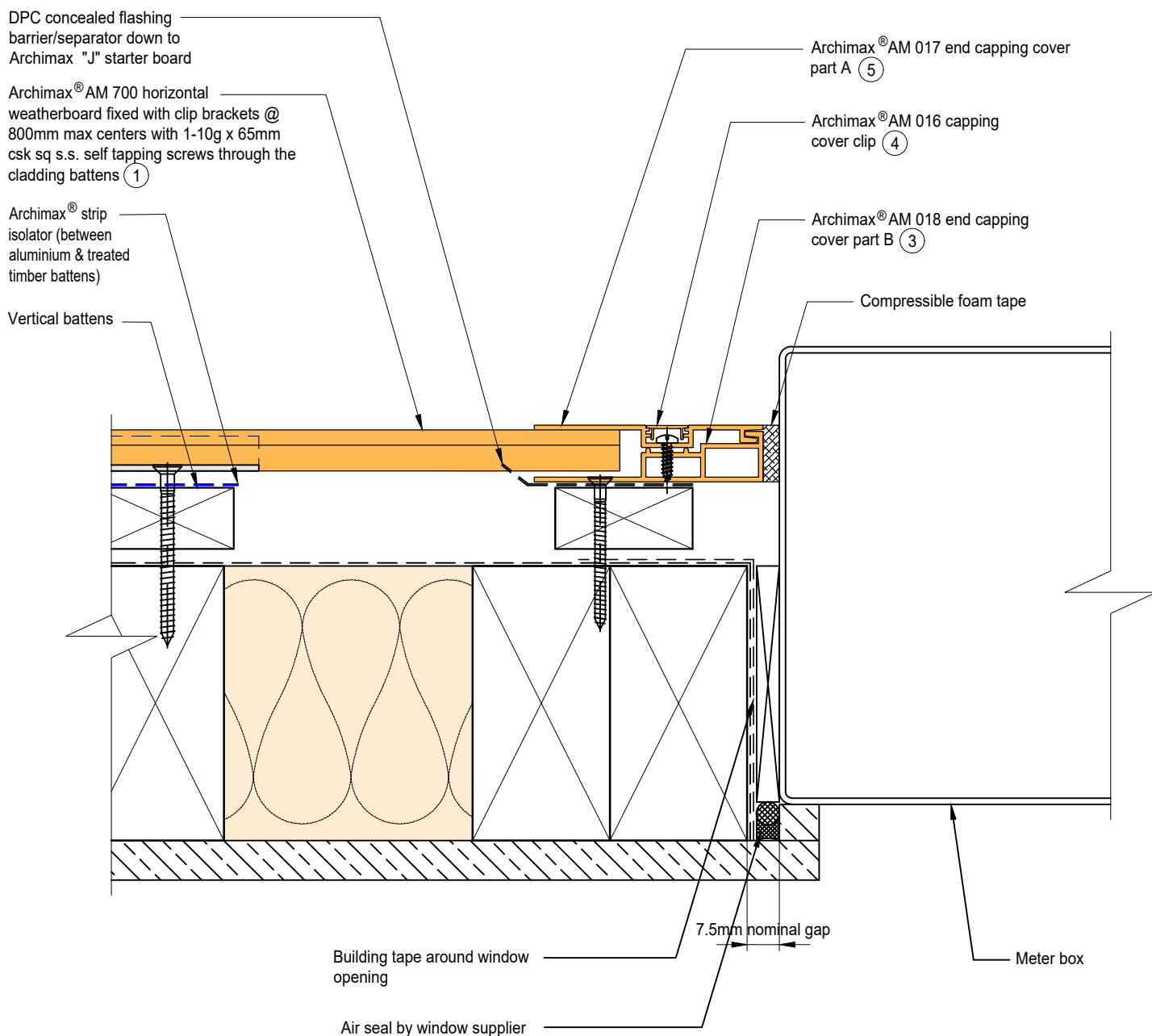




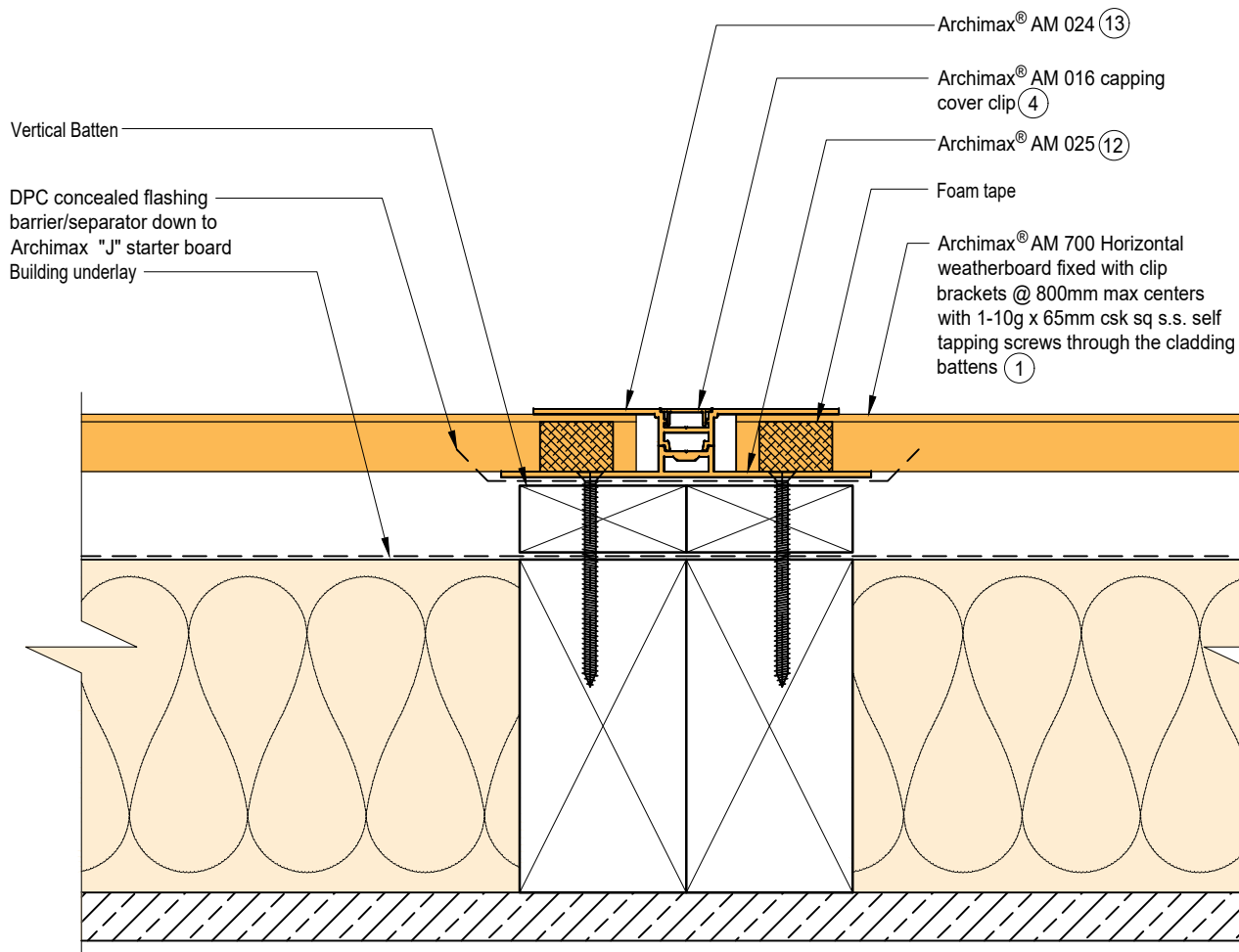
NOTE:
STOP ENDS TO BE INSTALLED AT FLASHING ENDS





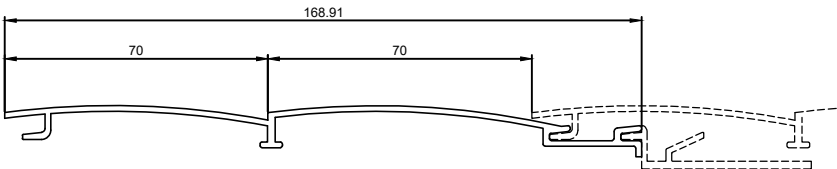
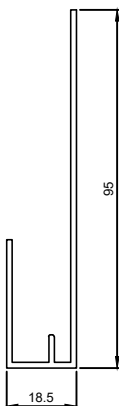
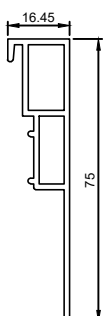
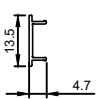
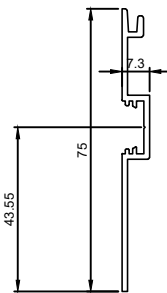
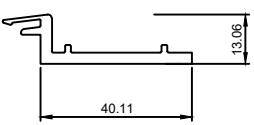
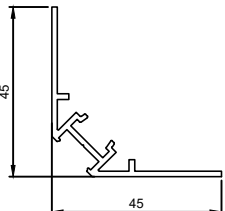
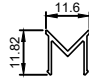
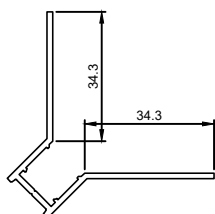
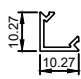
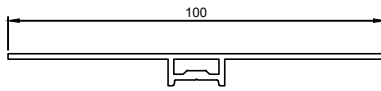
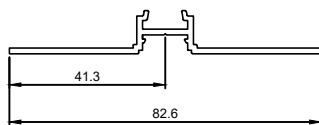


EXTERIOR



INTERIOR



| | | | | |
|--|---|---|--|---|
| <div><div>1</div><div></div></div> | | | | |
| AM 700 Archimax Horizontal/Vertical Weatherboard | | | | |
| <div><div>2</div><div></div></div> | <div><div>3</div><div></div></div> | <div><div>4</div><div></div></div> | <div><div>5</div><div></div></div> | <div><div>6</div><div></div></div> |
| AM 009 | AM 018 | AM 016 | AM 017 | AM 050 |
| "J" Starter Board | End capping part B | Jointer / Jamb / Sill capping cover clip | End Capping part A | Clip Bracket |
| <div><div>7</div><div></div></div> | <div><div>8</div><div></div></div> | <div><div>9</div><div></div></div> | <div><div>11</div><div></div></div> | |
| AM 019 | AM 023 | AM 022 | AM 020 | |
| Internal/External corner part A | Internal Corner cover clip | Internal Corner part B | External Corner cover clip | |
| <div><div>12</div><div></div></div> | | | <div><div>13</div><div></div></div> | |
| AM 025 Jointer part A | | | AM 024 Jointer part B | |