



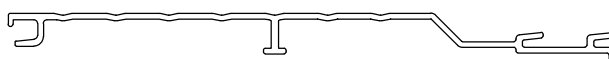
# ARCHIMAX

## ALUMINIUM CLADDING SYSTEM

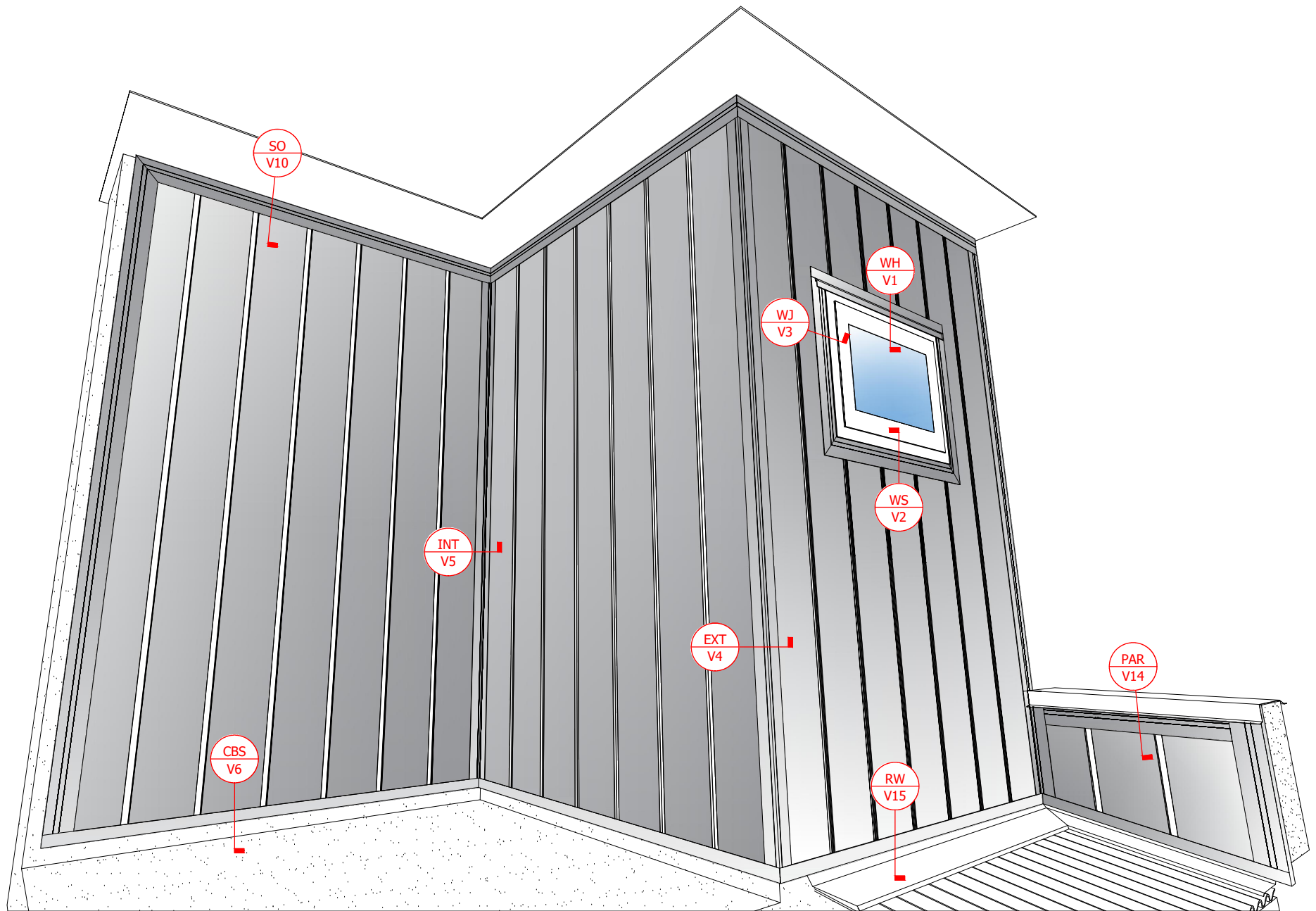
*Creating more durable building envelopes*

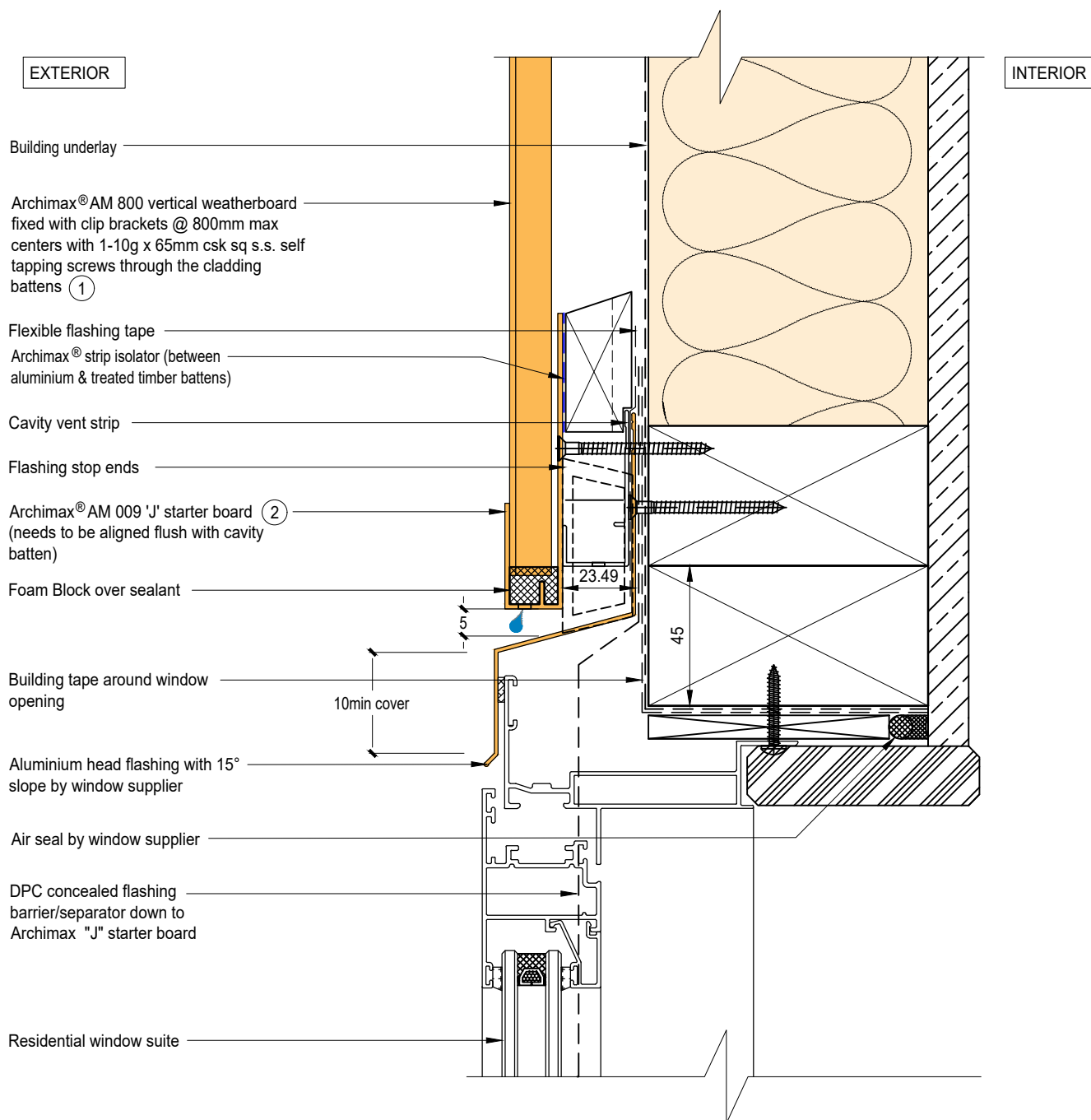
### Archimax® Aluminium Cladding System AM800 Vertical Profile – Installation Details

Drawing No.	Rev.	Description
AM-WH-V1	E	Archimax® Window Head Detail
AM-WS-V2	E	Archimax® Window Sill Detail
AM-WJ-V3	E	Archimax® Window Jamb Detail
AM-EXT-V4	E	Archimax® External Corner Detail
AM-INT-V5	E	Archimax® Internal Corner Detail
AM-CBS-V6.1	E	Archimax® Concrete Floor "J" Starter Board Detail - Timber
AM-CBS-V6.2	E	Archimax® Concrete Floor "J" Starter Board Detail - Fire Wall
AM-HJ-V7	E	Archimax® Horizontal Joint Detail
AM-DJ-V8	E	Archimax® Deck Junction Detail
AM-PP-V9a	E	Archimax® Pipe Penetration - Plan View Detail
AM-PP-V9b	E	Archimax® Pipe Penetration - Section View Detail
AM-SO-V10	E	Archimax® Soffit Detail
AM-SO-V11.1	E	Archimax® Facia, Soffit & Wall Detail
AM-SO-V11.2	E	Archimax® Facia, Soffit & Wall (90° Soffit / Wall ) Detail
AM-SO-V11.3	E	Archimax® Fascia, Board Soffit & Wall Detail
AM-NSO-V12	E	Archimax® Non - Soffit Detail
AM-BJ-V13	E	Archimax® Internal Corner Junction Detail
AM-PAR-V14	E	Archimax® Parapet with Cavity Detail
AM-RW-V15	E	Archimax® Lower Roof Wall Junction Detail
AM-MB-V16	E	Archimax® Meter Box Head Detail
AM-MB-V17	E	Archimax® Meter Box Sill Detail
AM-MB-V18	E	Archimax® Meter Box Jamb Detail



**AM800**  
coverage: 134mm

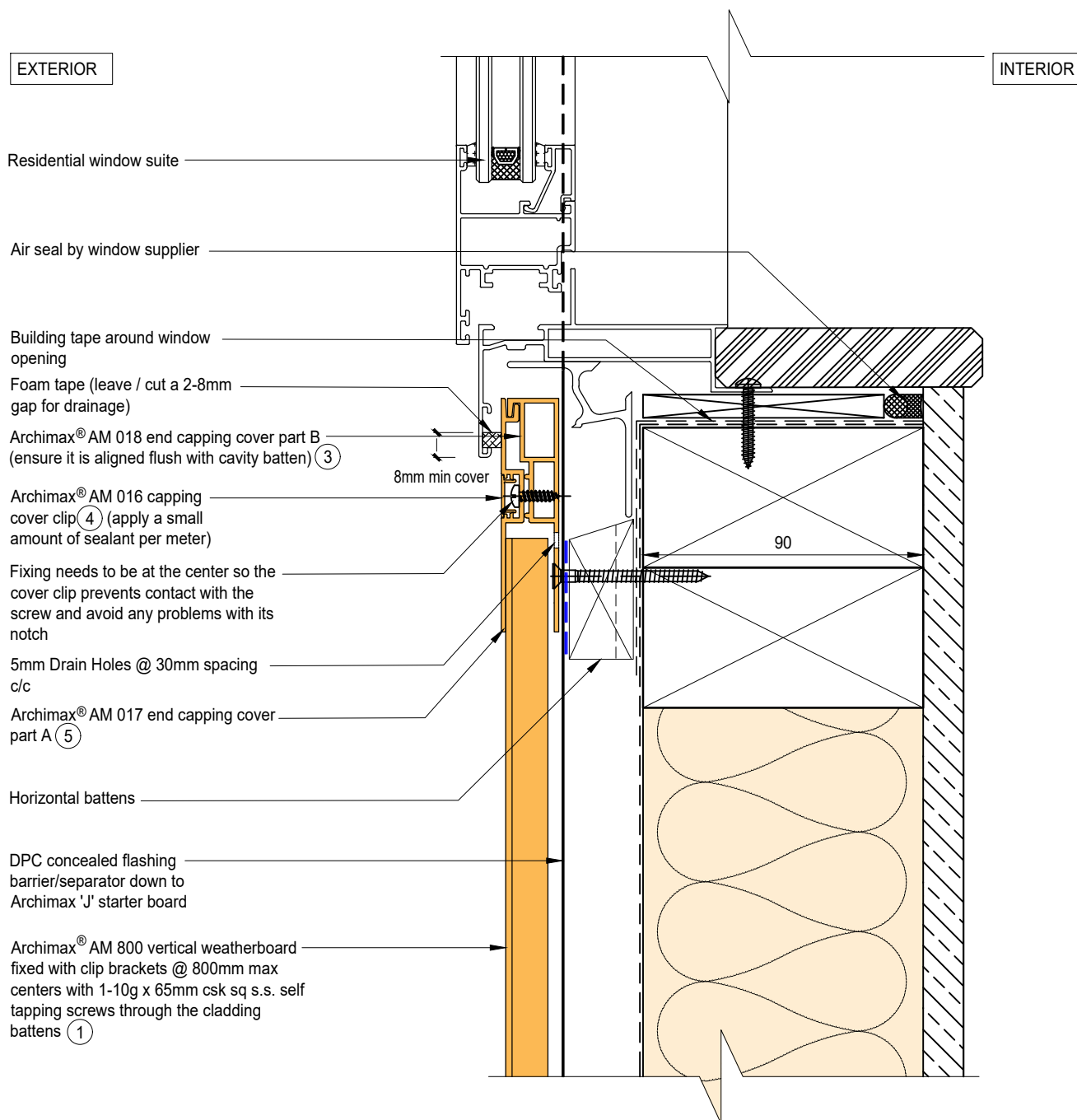




NOTE:

1. Stop ends to be installed at flashing ends.
2. Minimum Clearance between the AIR BARRIER and WINDOW JOINERY to be 45mm. Window Joinery should not be permanently fixed until cladding installed.
3. Sealant on each ends of the "J" starter board to prevent water going into cavity.
4. Timber Cavity Batten at 800mm max spacing.
5. Secure the AM029 clip with 1 screw for standard use, or 2 screws for added support





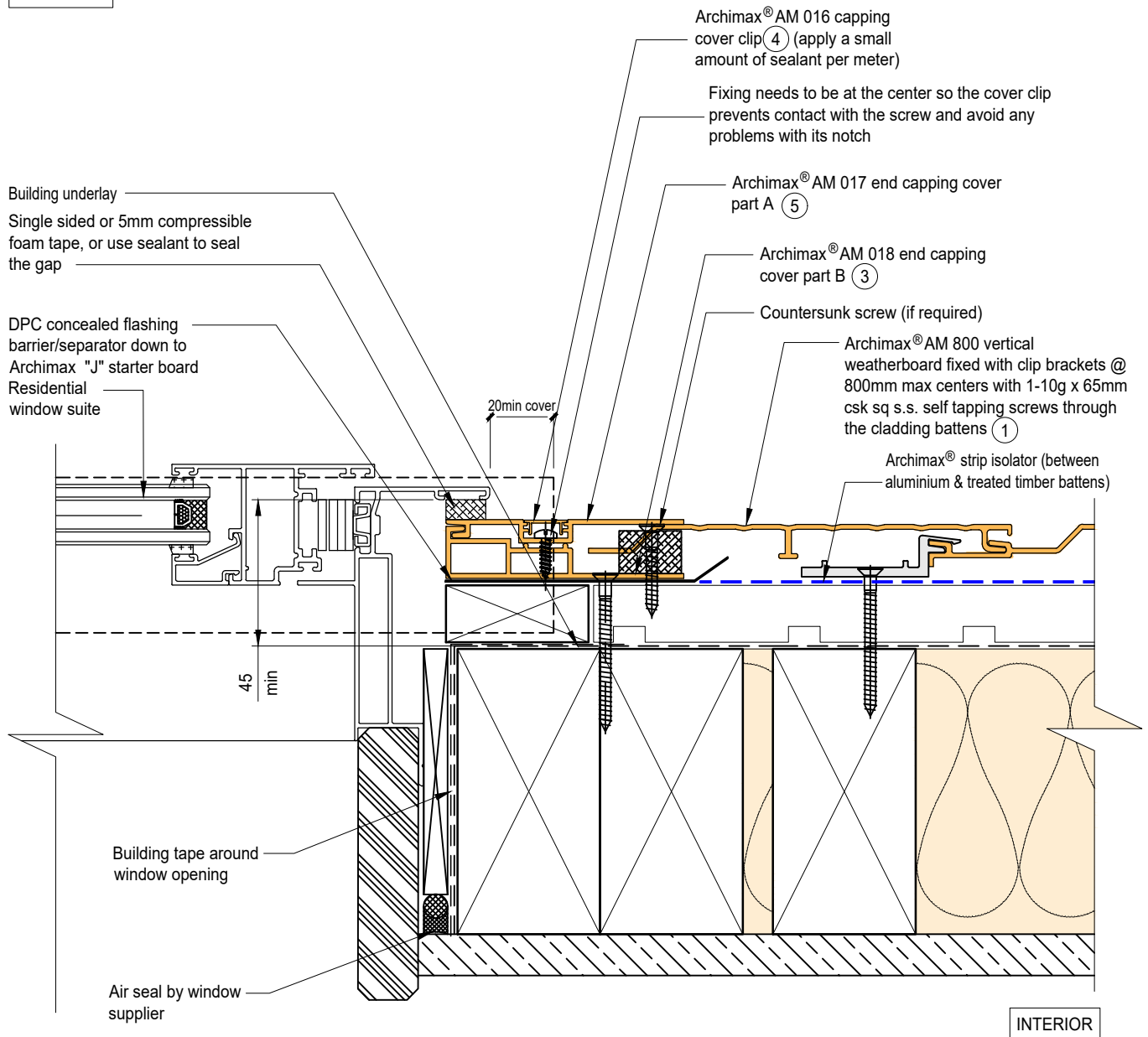
**NOTE:**

1. Minimum Clearance between the AIR BARRIER and WINDOW JOINERY to be 45mm. Window Joinery should not be permanently fixed until cladding installed.
2. Apply a small amount of sealant to every meter of the AM016 cover clip. Report to Archimax if AM016 cover clips are loose or tight. Do not force to install.
3. Timber Cavity Batten at 800mm max spacing.
4. Secure the AM029 clip with 1 screw for standard use, or 2 screws for added support





EXTERIOR

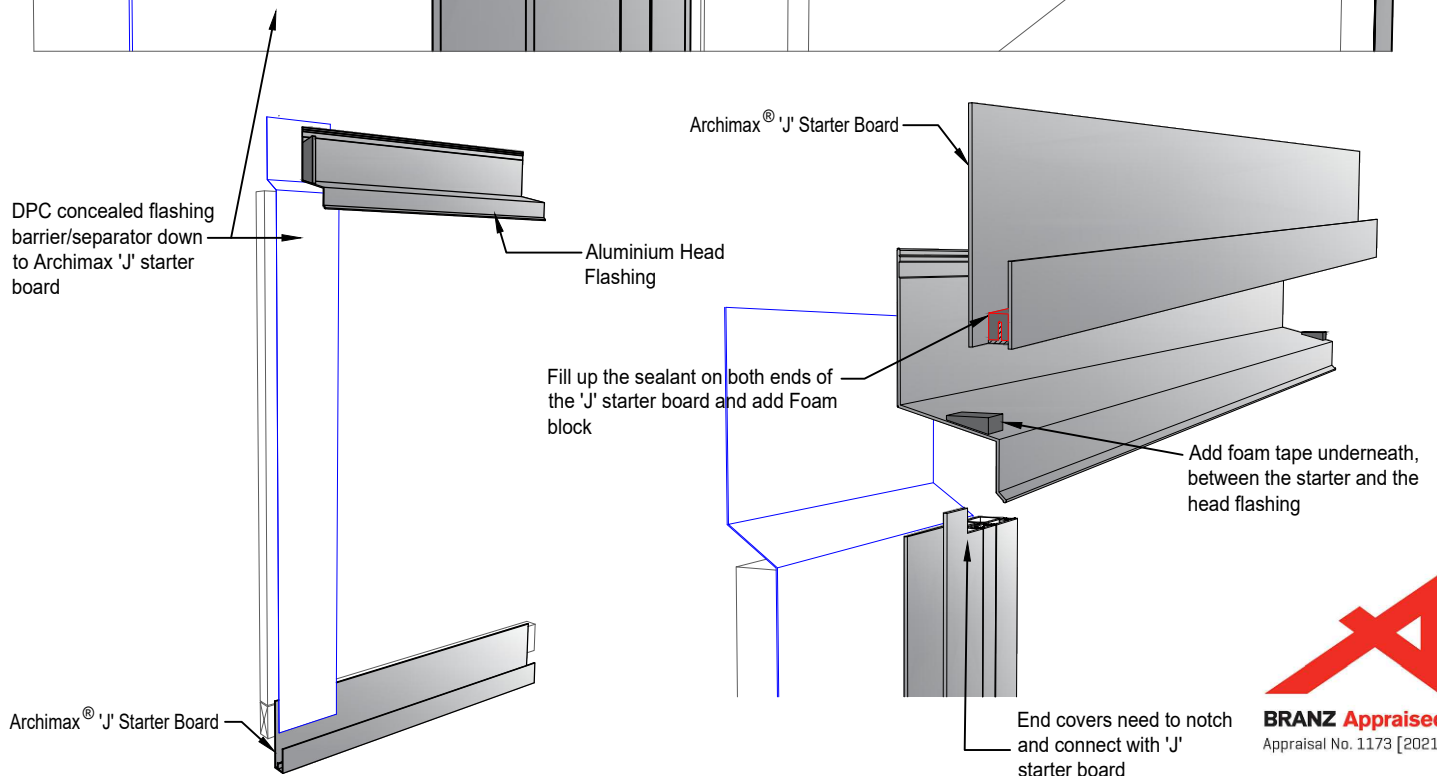
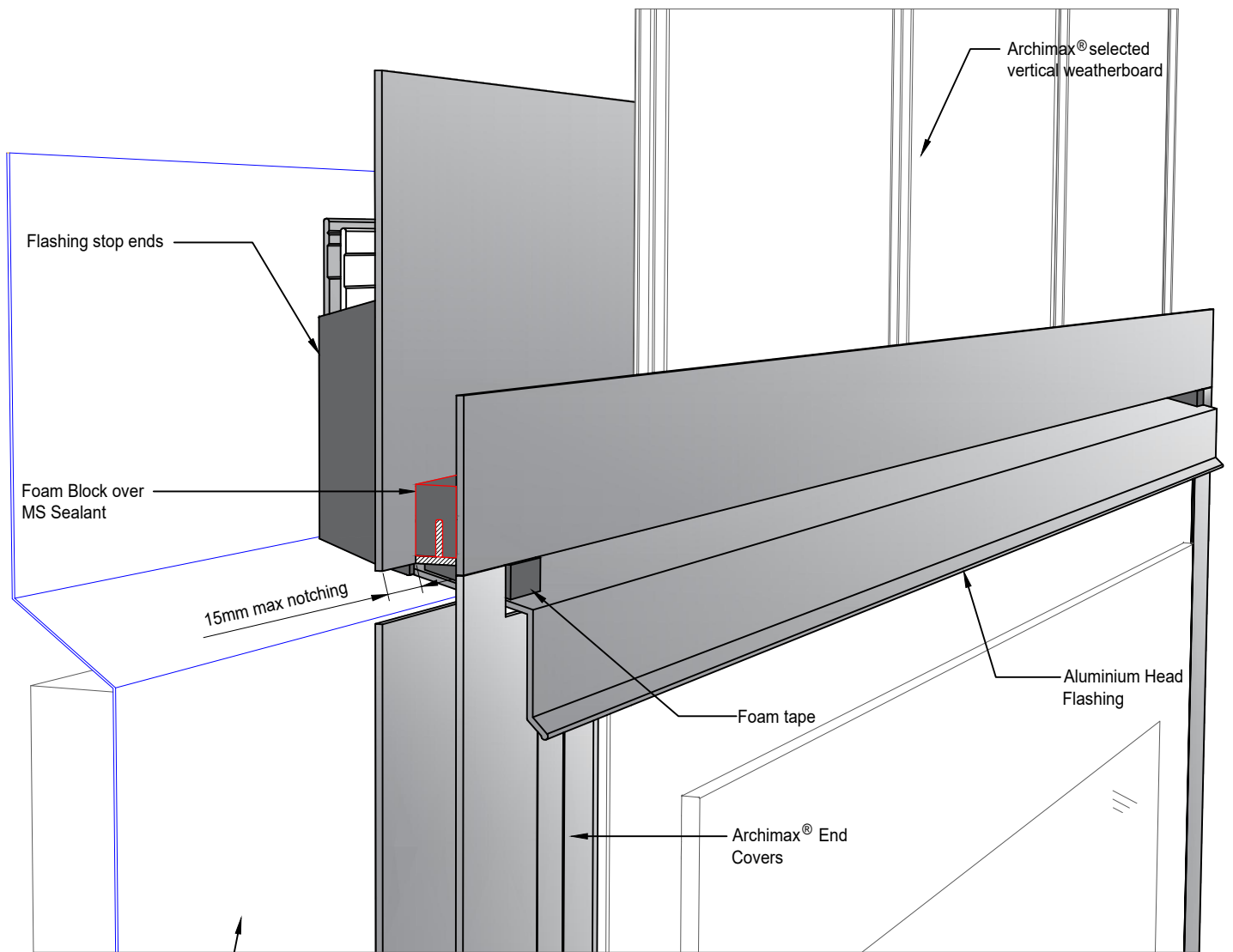


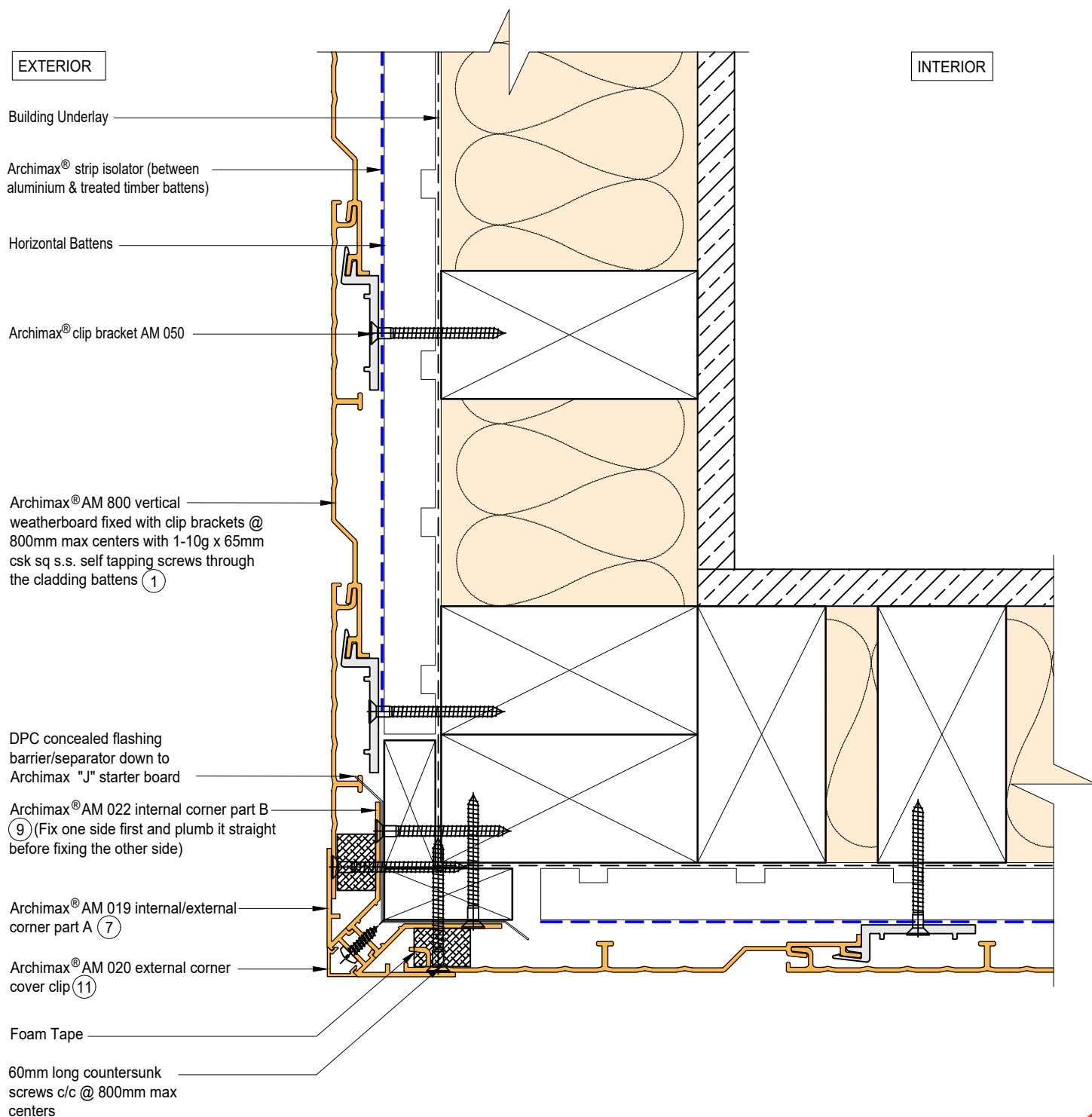
INTERIOR

NOTE:

1. Minimum Clearance between the AIR BARRIER and WINDOW JOINERY to be 45mm. Window Joinery should not be permanently fixed until cladding installed.
2. Ideally, use 5mm compressible foam tape, or use sealant to seal the gap between window frame and Archimax cladding depending on the site situation.
3. Apply a small amount of sealant to every meter of the AM016 cover clip. Report to Archimax if AM016 cover clips are loose or tight. Do not force to install.



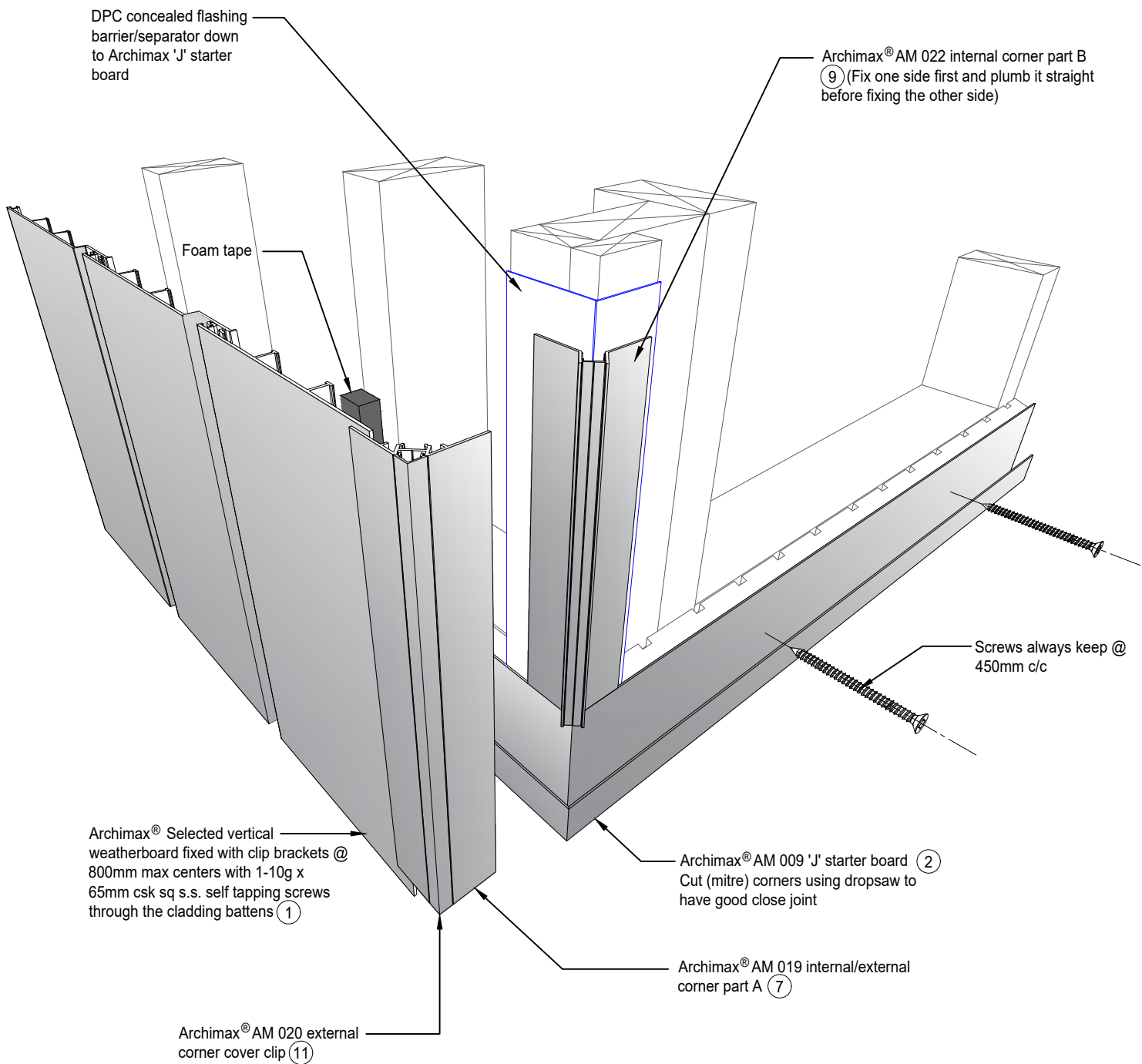


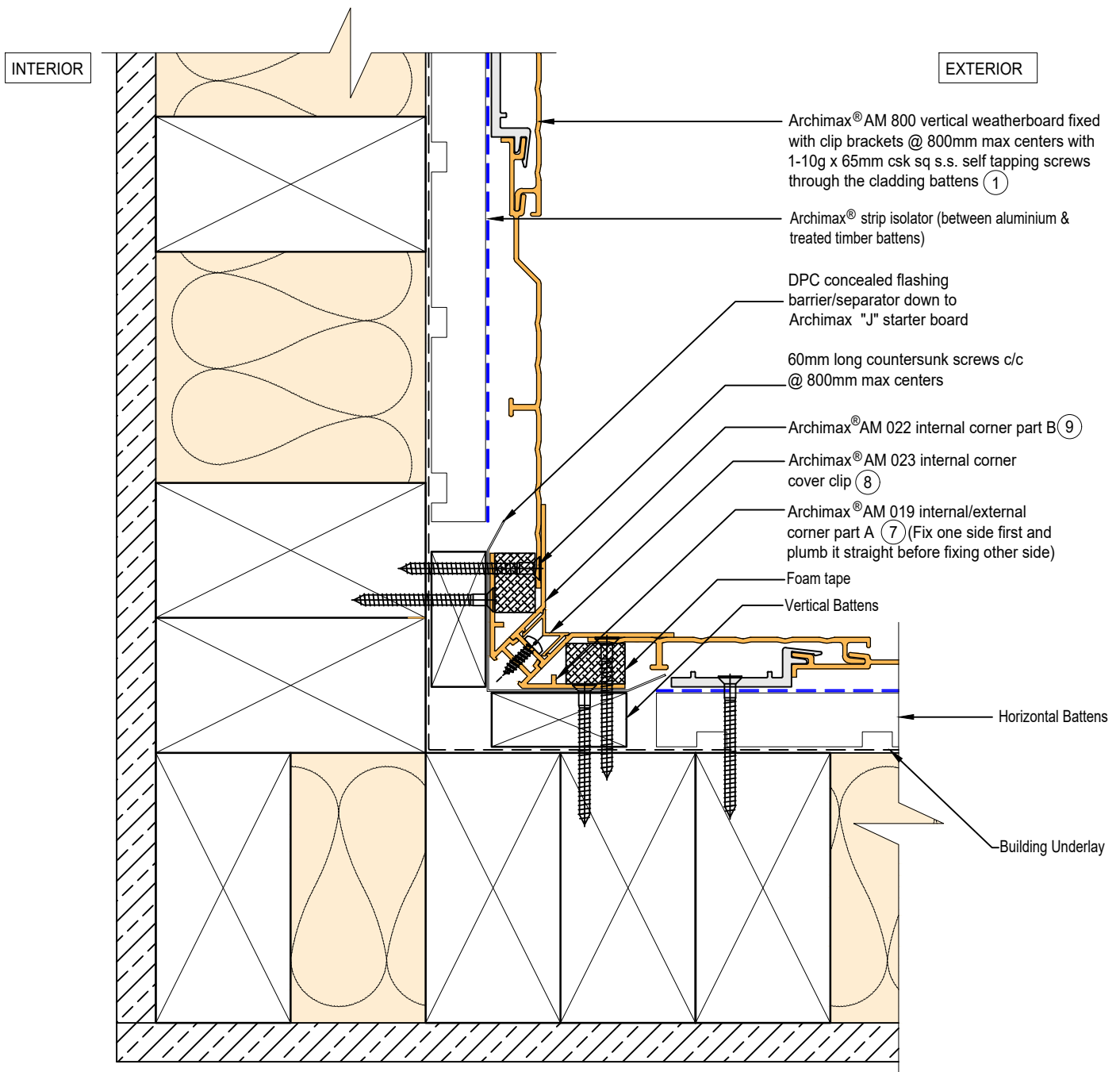


NOTE:

1. Fix the External Corner part B on one side first and plumb it straight before fixing the other side to avoid twisting.



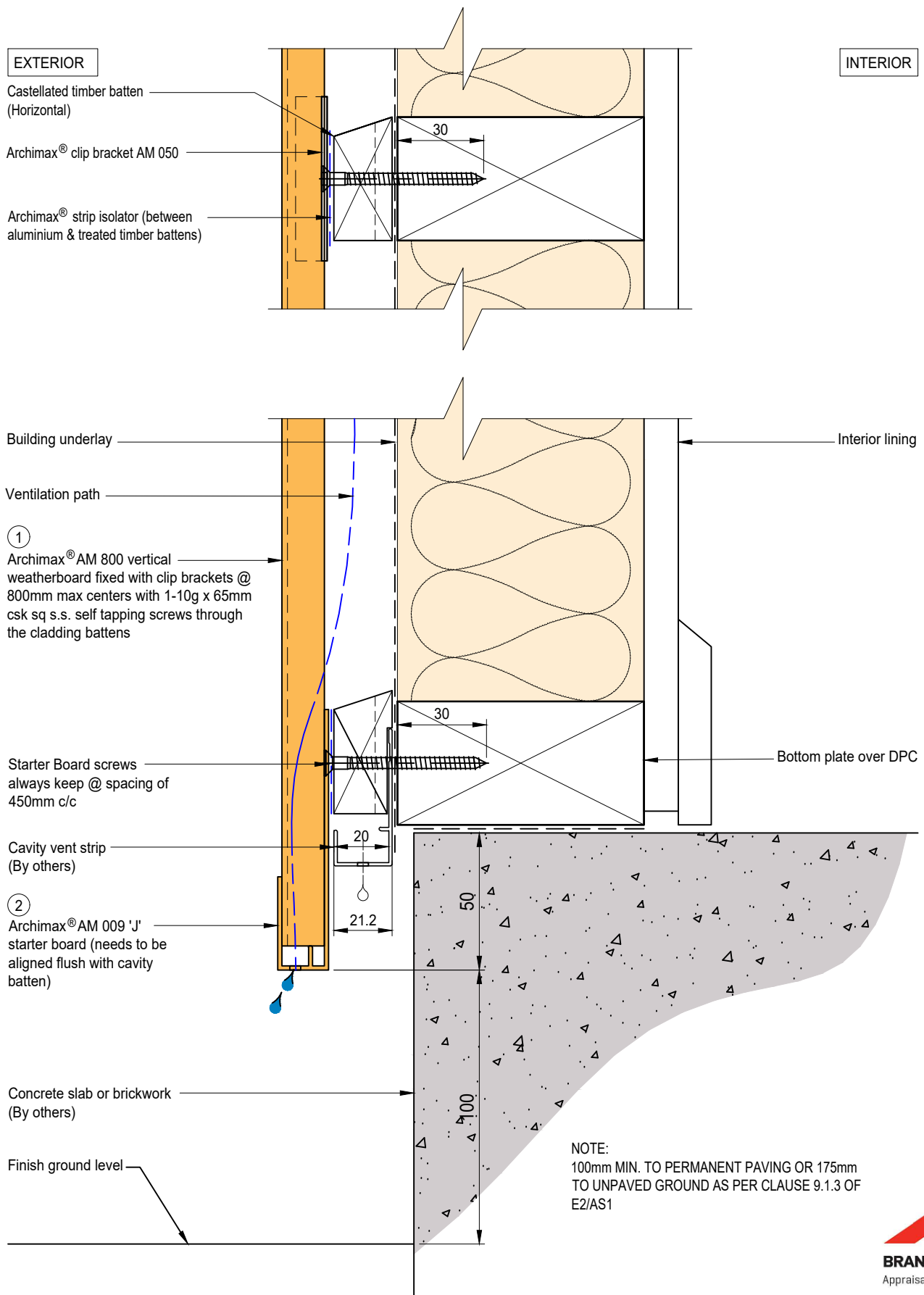




NOTE:

1. Fix the AM 019 internal/external corner part A on one side first and plumb it straight before fixing the other side to avoid twisting.





EXTERIOR

INTERIOR

Archimax® Aluminium Batten  
AMB 01 (Horizontal)

Archimax® clip bracket AM 050

Rigid air barrier  
(FRR)

Ventilation path

①  
Archimax® AM 800 vertical  
weatherboard fixed with clip brackets @  
800mm max centers with 1-10g x 65mm  
csk sq s.s. self tapping screws through  
the cladding battens

2\*10g x 70mm ST screw @ 300mm c/c

Starter Board screws  
always keep @ spacing of  
450mm c/c

Cavity vent strip  
(By others)

②  
Archimax® AM 009 'J'  
starter board (needs to be  
aligned flush with cavity  
batten)

Concrete slab or brickwork  
(By others)

Finish ground level

Interior lining

Bottom plate over DPC

NOTE:  
100mm MIN. TO PERMANENT PAVING OR 175mm  
TO UNPAVED GROUND AS PER CLAUSE 9.1.3 OF  
E2/AS1



EXTERIOR

INTERIOR

Building underlay

Archimax® AM 800 vertical weatherboard  
fixed with clip brackets @ 800mm max  
centers with 1-10g x 65mm csk sq s.s. self  
tapping screws through the cladding  
battens ①

Flexible flashing tape

Archimax® strip isolator (between  
aluminium & treated timber  
battens)

Cavity vent strip

Archimax AM 009 'J' starter board ②  
(needs to be aligned flush with cavity  
batten)

Inter-Storey flashing  
stop ends

Archimax® AM 018 end capping cover part B  
(needs to be aligned flush with cavity batten) ③

Archimax® AM 016 capping  
cover clip ④ (apply a small  
amount of sealant per meter)

Archimax® AM 017 end capping cover  
part A ⑤

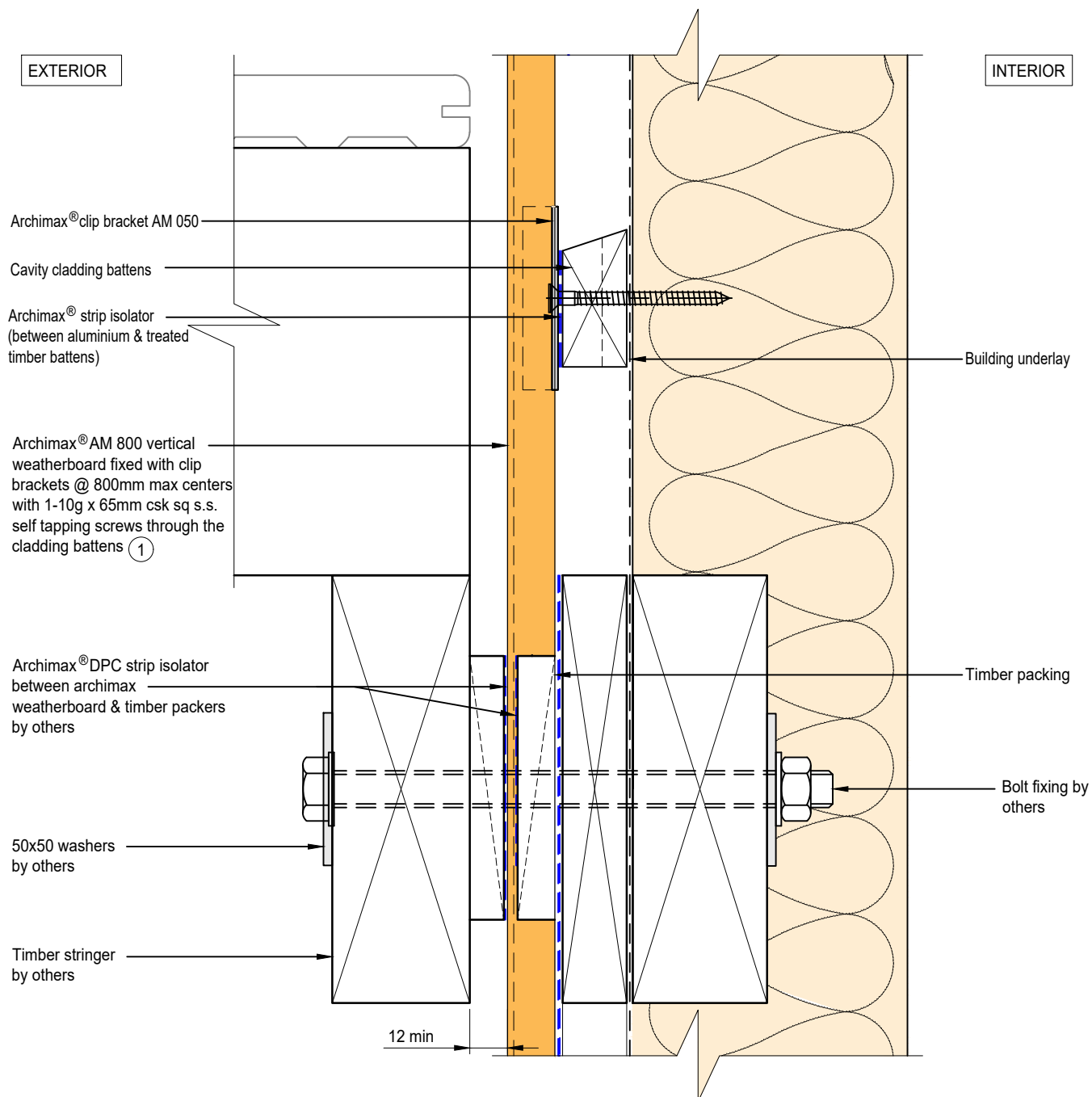
5mm Drain Holes @ 30mm spacing  
c/c

Horizontal battens

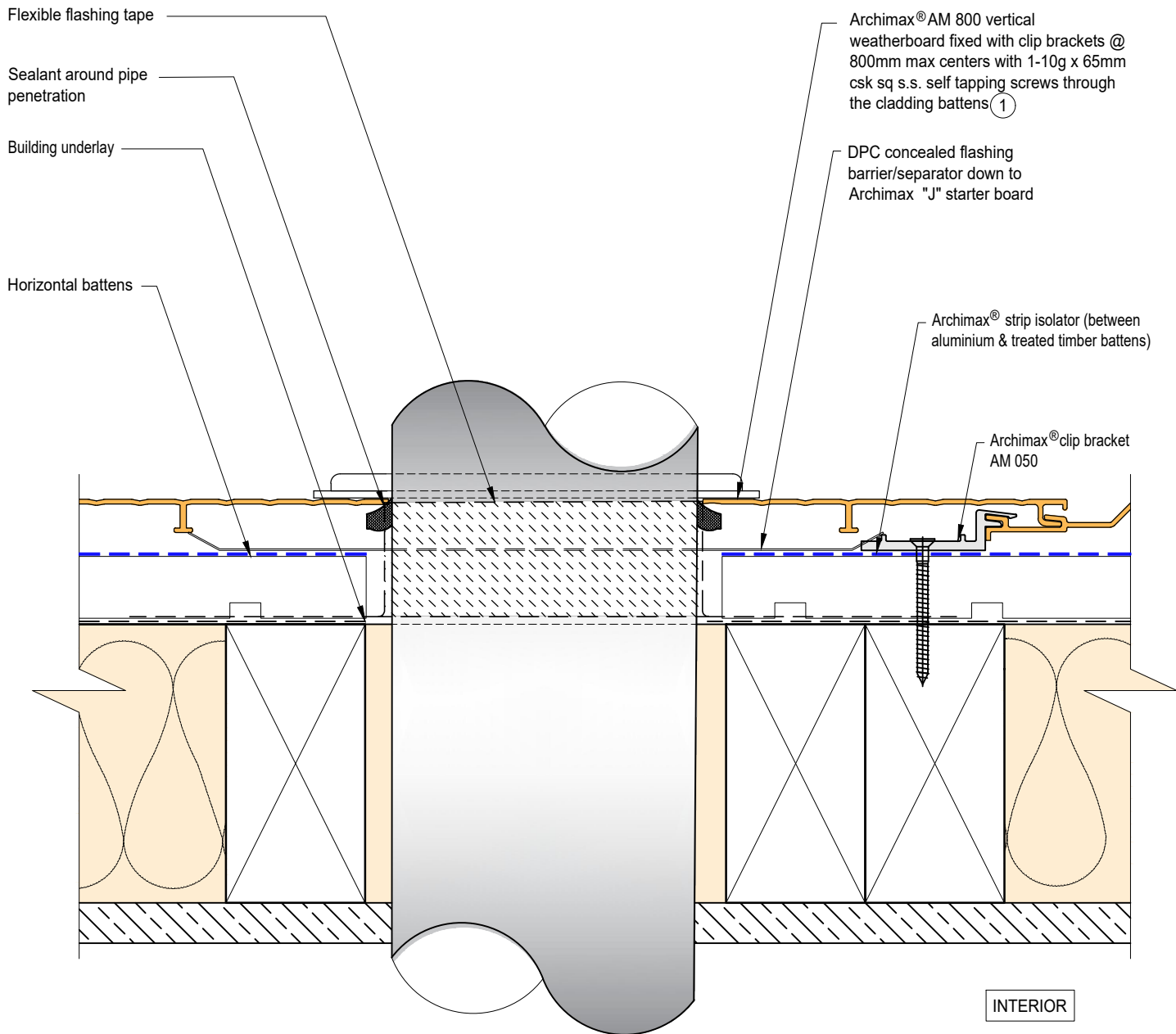
13  
5  
21.4

NOTE:  
STOP ENDS TO BE INSTALLED AT INTER-STOREY FLASHING ENDS





EXTERIOR



EXTERIOR

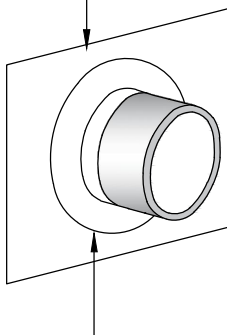
INTERIOR

Archimax® AM 800 vertical weatherboard  
fixed with clip brackets @ 800mm max  
centers with 1-10g x 65mm csk sq s.s. self  
tapping screws through the cladding  
battens ①

Archimax® clip bracket AM 050

Horizontal battens

DPC concealed flashing  
barrier/separator down to  
Archimax "J" starter board



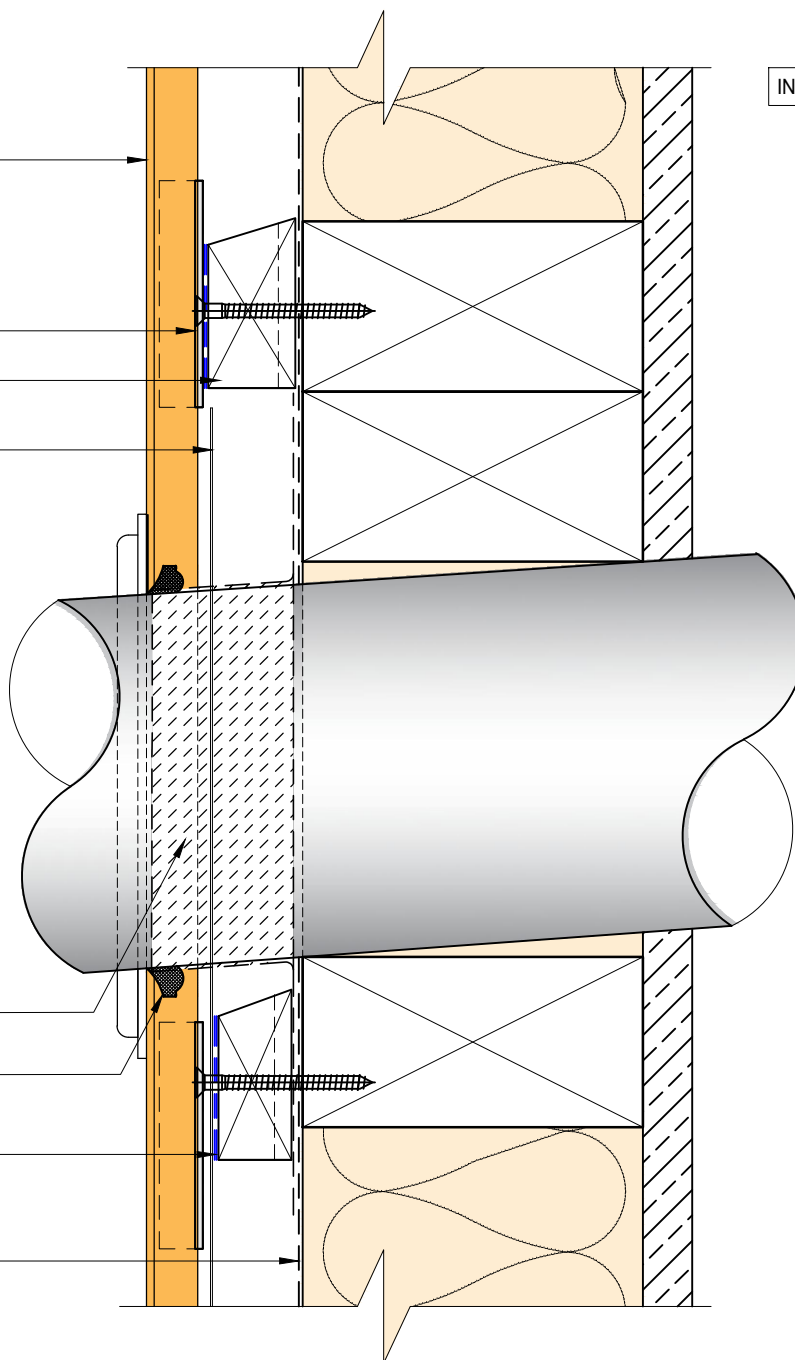
Pipe cover flange bed sealed to  
Archimax Cladding by others

Flexible flashing tape

Sealant around pipe  
penetration

Archimax® strip isolator (between  
aluminium & treated timber battens)

Building underlay



EXTERIOR

INTERIOR

5mm compressible  
foam tape, or use  
sealant to seal the gap

Archimax® AM 018 end capping  
cover part B (3)

Archimax® AM 016 capping  
cover clip (4)

Archimax® AM 017 end capping cover  
part A (5)

Fixing needs to be at the center so the  
cover clip prevents contact with the  
screw and avoid any problems with its  
notch

5mm Drain Holes @ 30mm spacing  
c/c

Countersunk screws

- for vertical cladding above 4 meters, secure 1  
screw at the top for every meter of width.
- for vertical cladding above 6 meters, secure 1  
screw at the top & middle for every meter of  
width.

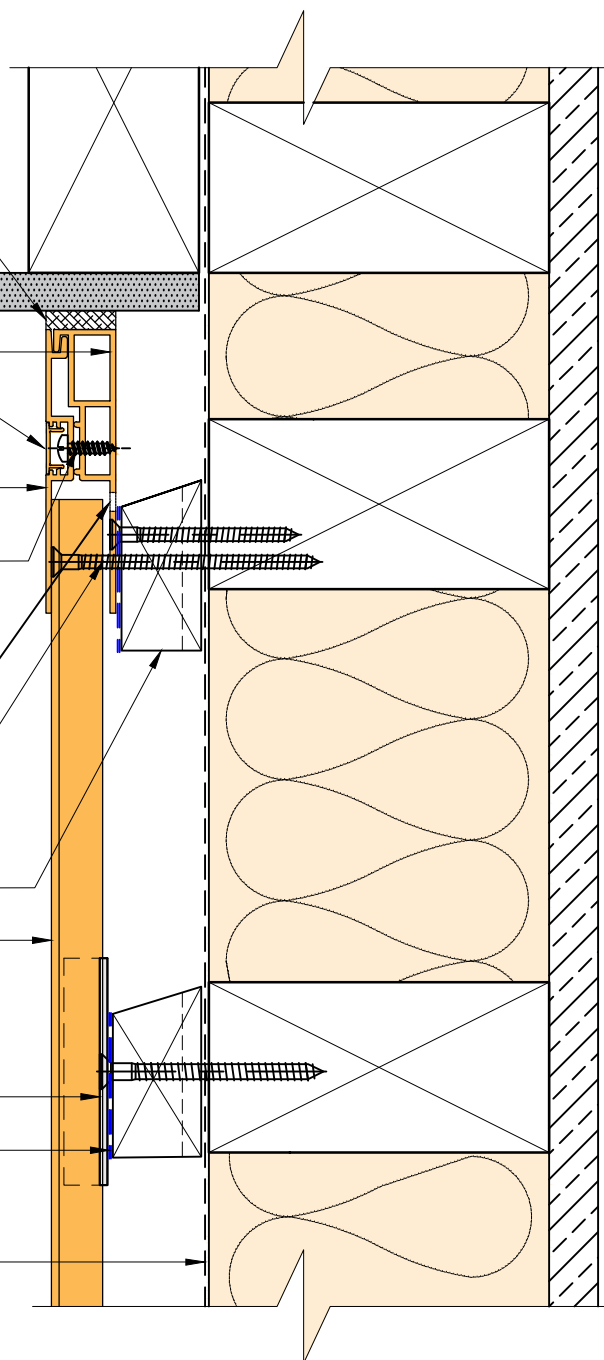
Horizontal battens

Archimax® AM 800 vertical weatherboard  
fixed with clip brackets @ 800mm max  
centers with 1-10g x 65mm csk sq s.s. self  
tapping screws through the cladding  
battens (1)

Archimax® clip bracket AM 050

Archimax® strip isolator (between  
aluminium & treated timber battens)

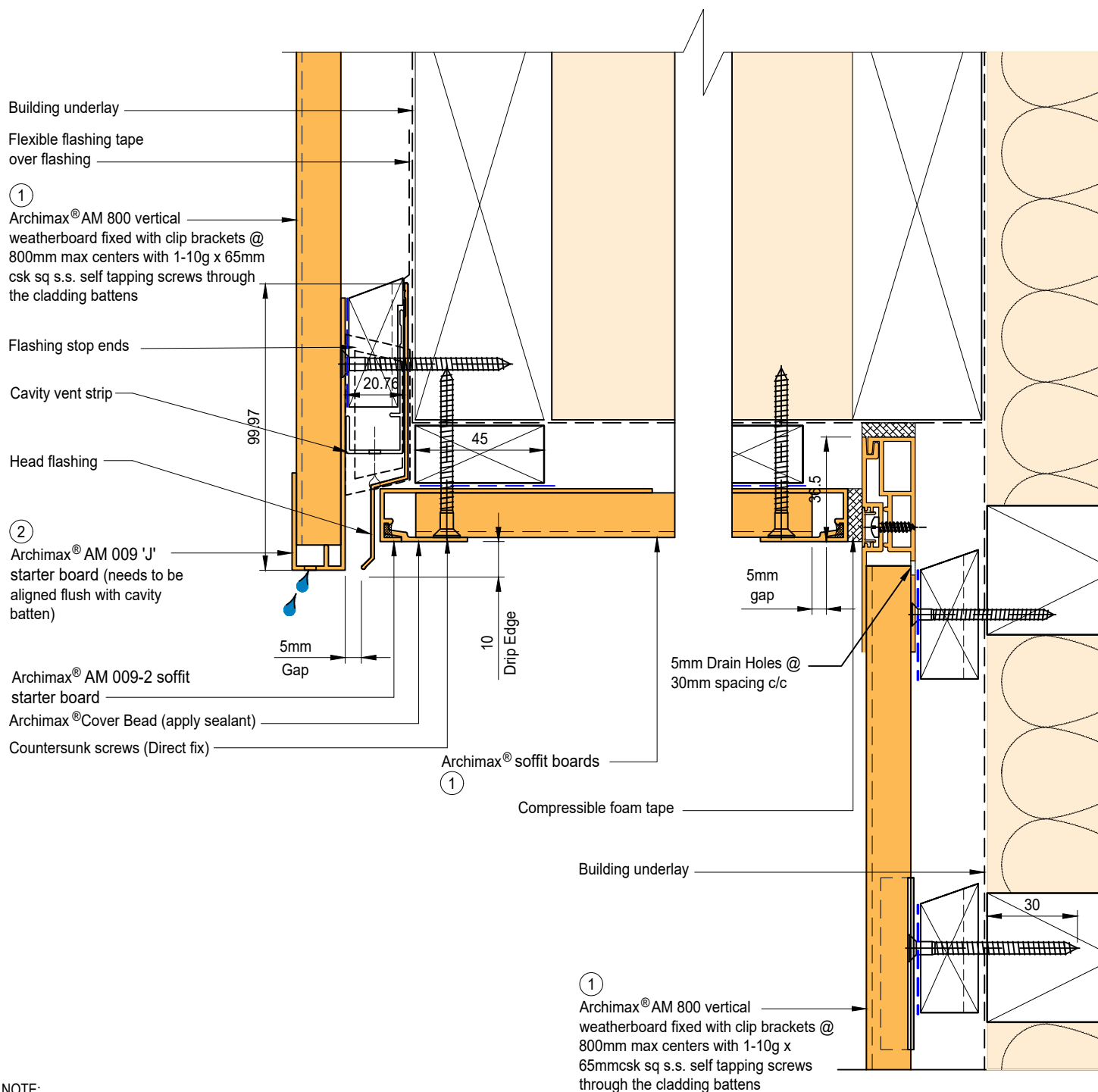
Building underlay



NOTE:

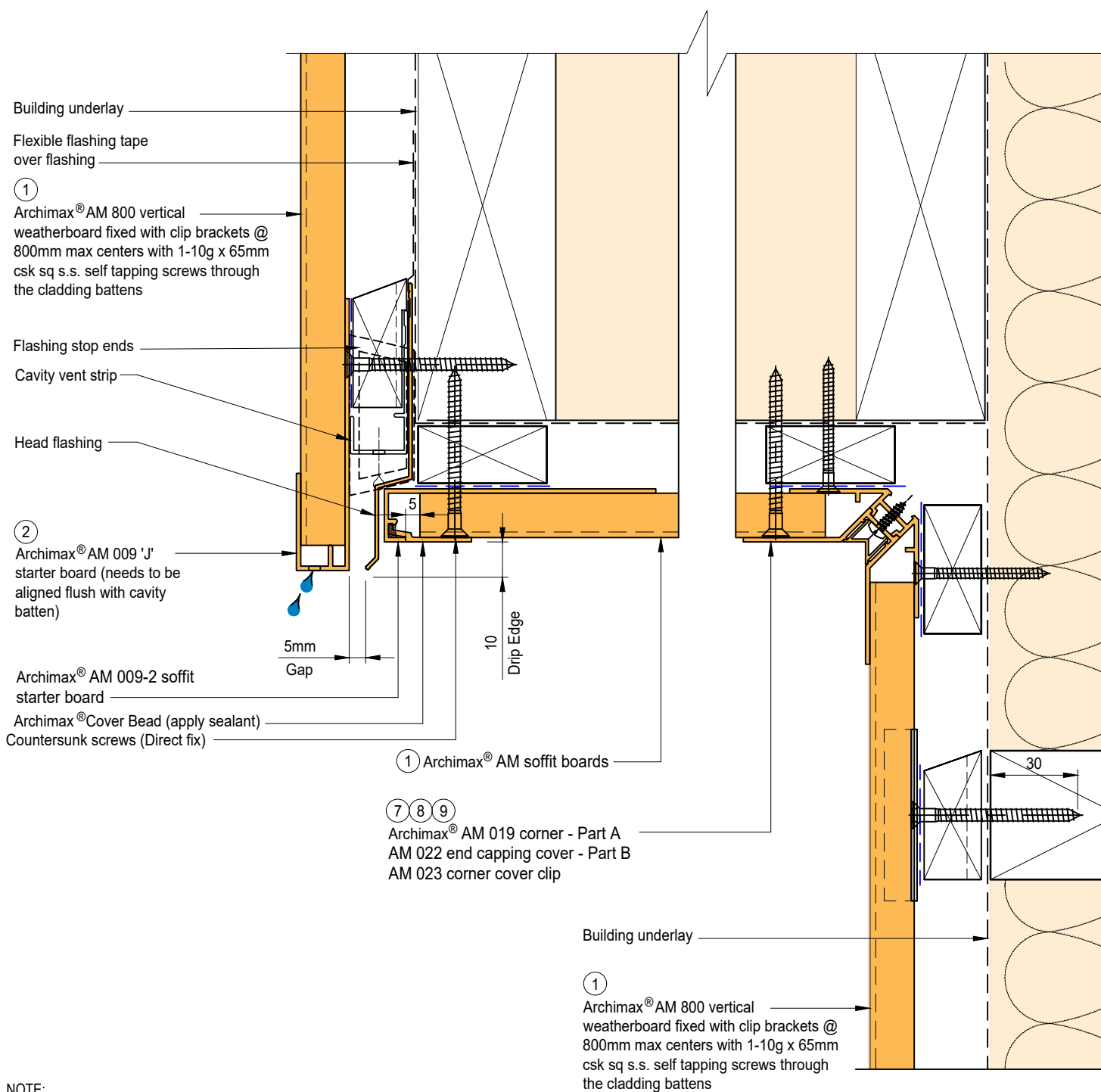
1. Ideally, use 5mm compressible foam tape, or use sealant to seal the gap between soffit and Archimax cladding depending on the site situation.
2. For vertical cladding more than 4 meters, secure 1 screw at the top for every meter of width. If it exceeds 6 meters, fix at both top and middle with one screw each.
3. Timber Cavity Batten at 800mm max spacing.
4. Secure the AM029 clip with 1 screw for standard use, or 2 screws for added support





NOTE:

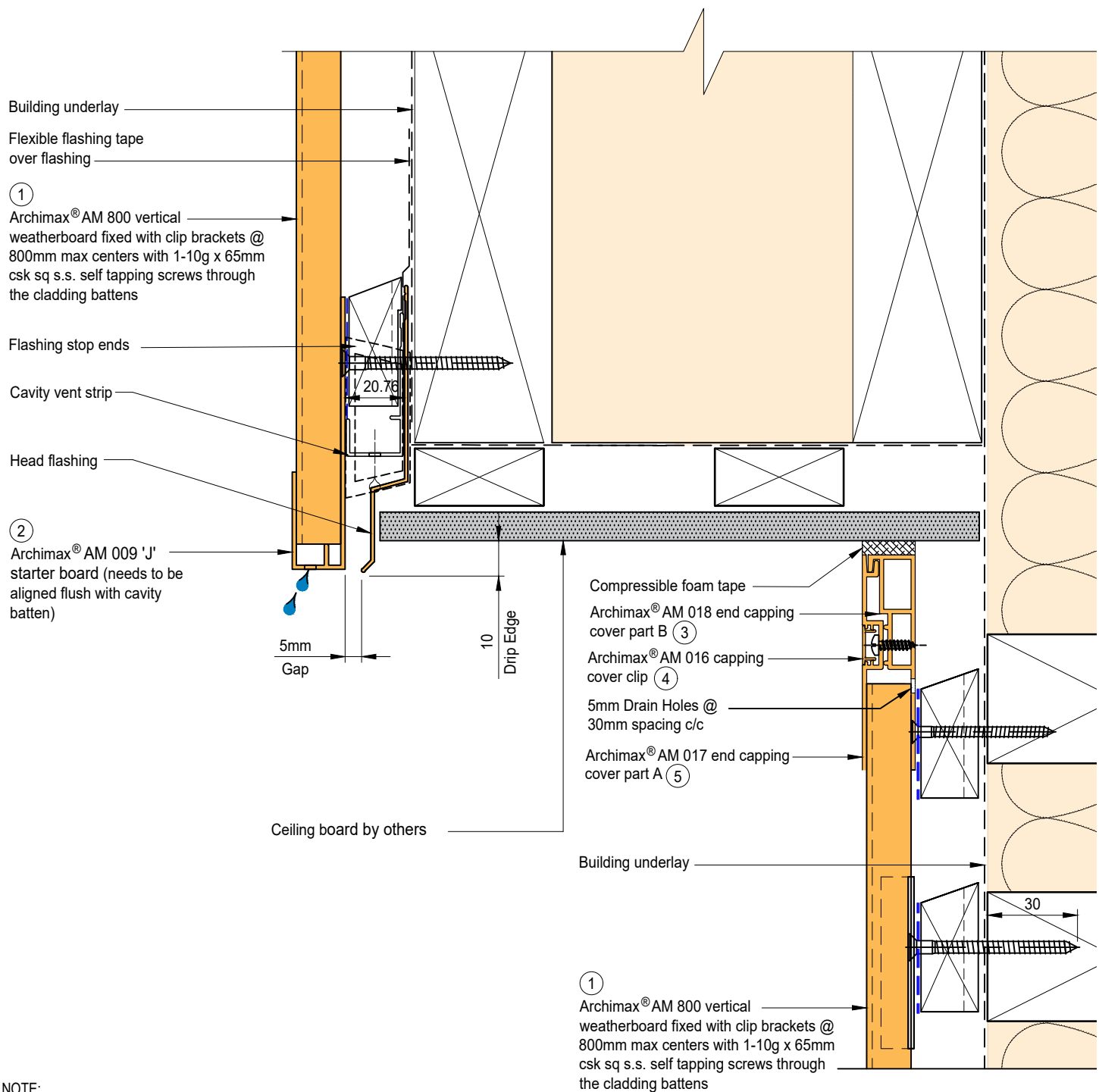
1. Stop ends to be installed at flashing ends.
2. Soffit requires direct fixing without brackets.

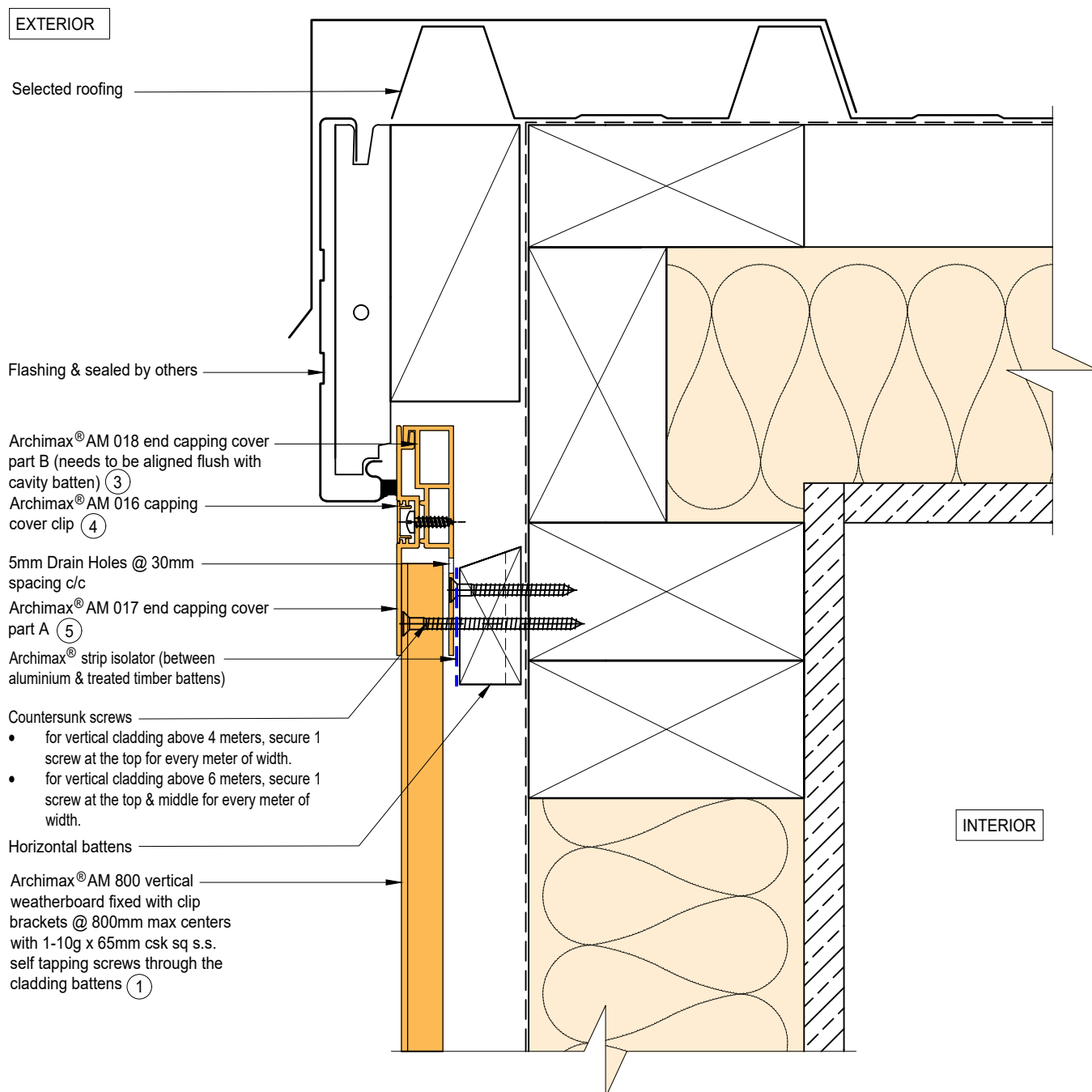


NOTE:

1. Stop ends to be installed at flashing ends.
2. Soffit requires direct fixing without brackets.



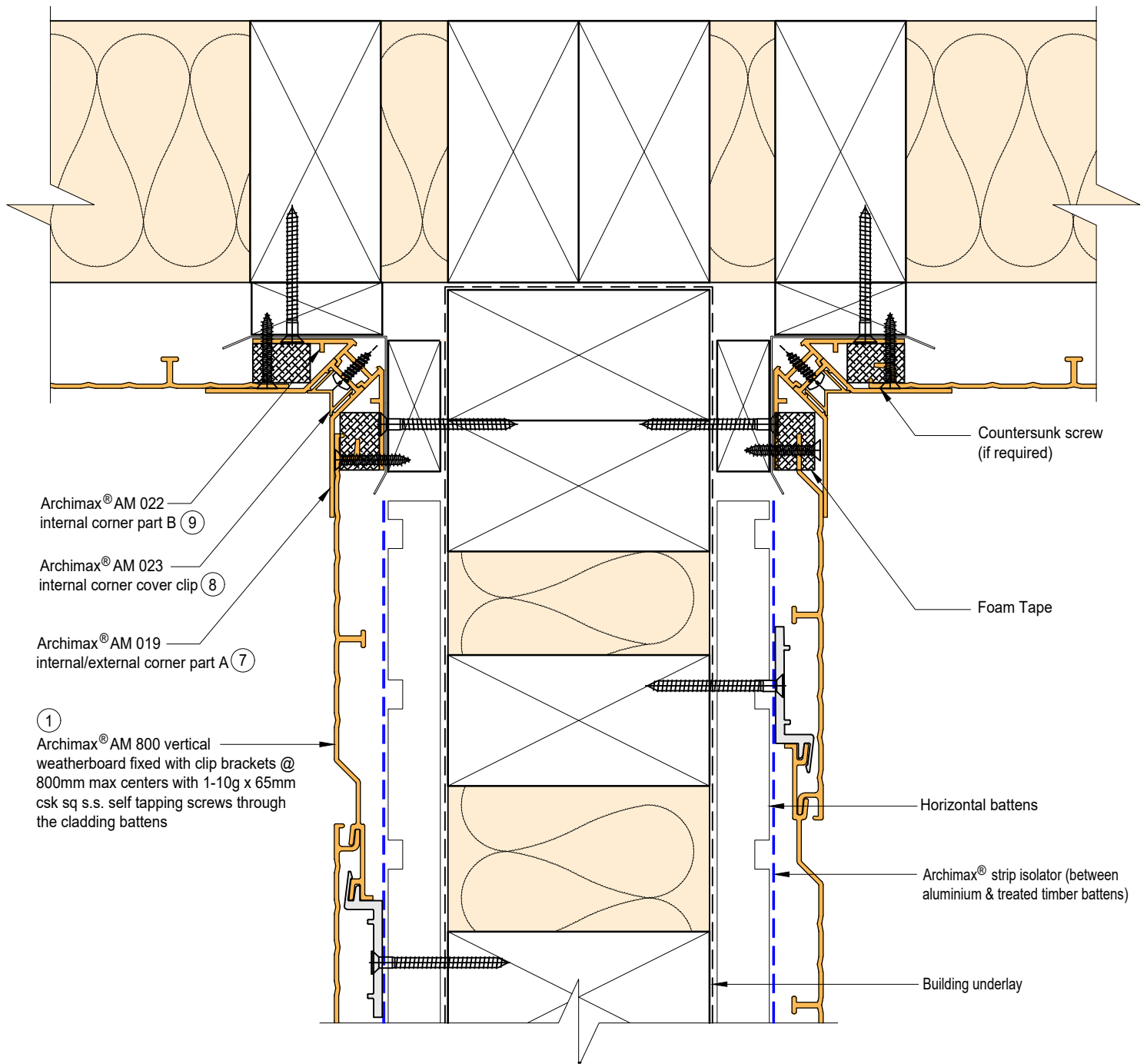


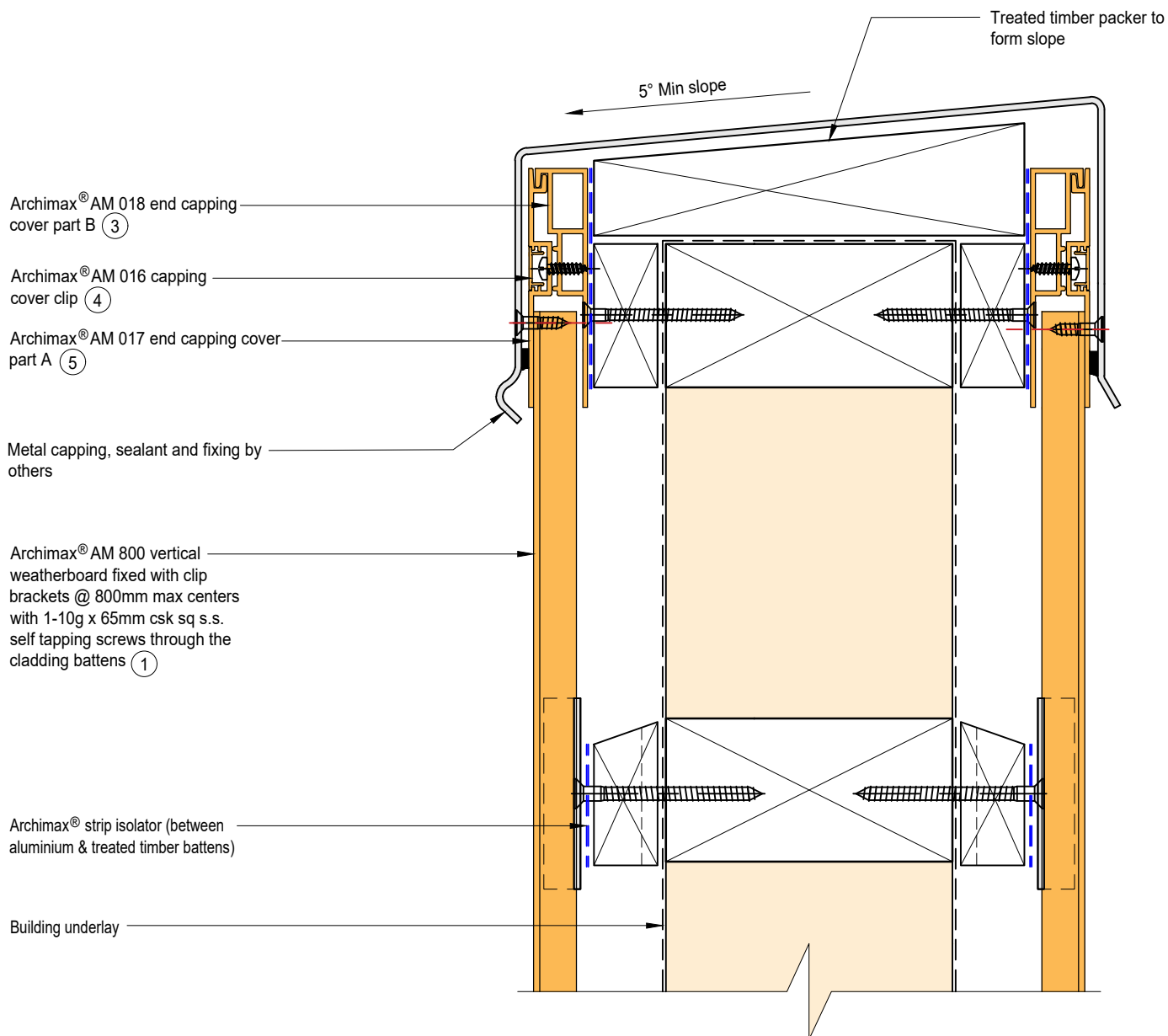


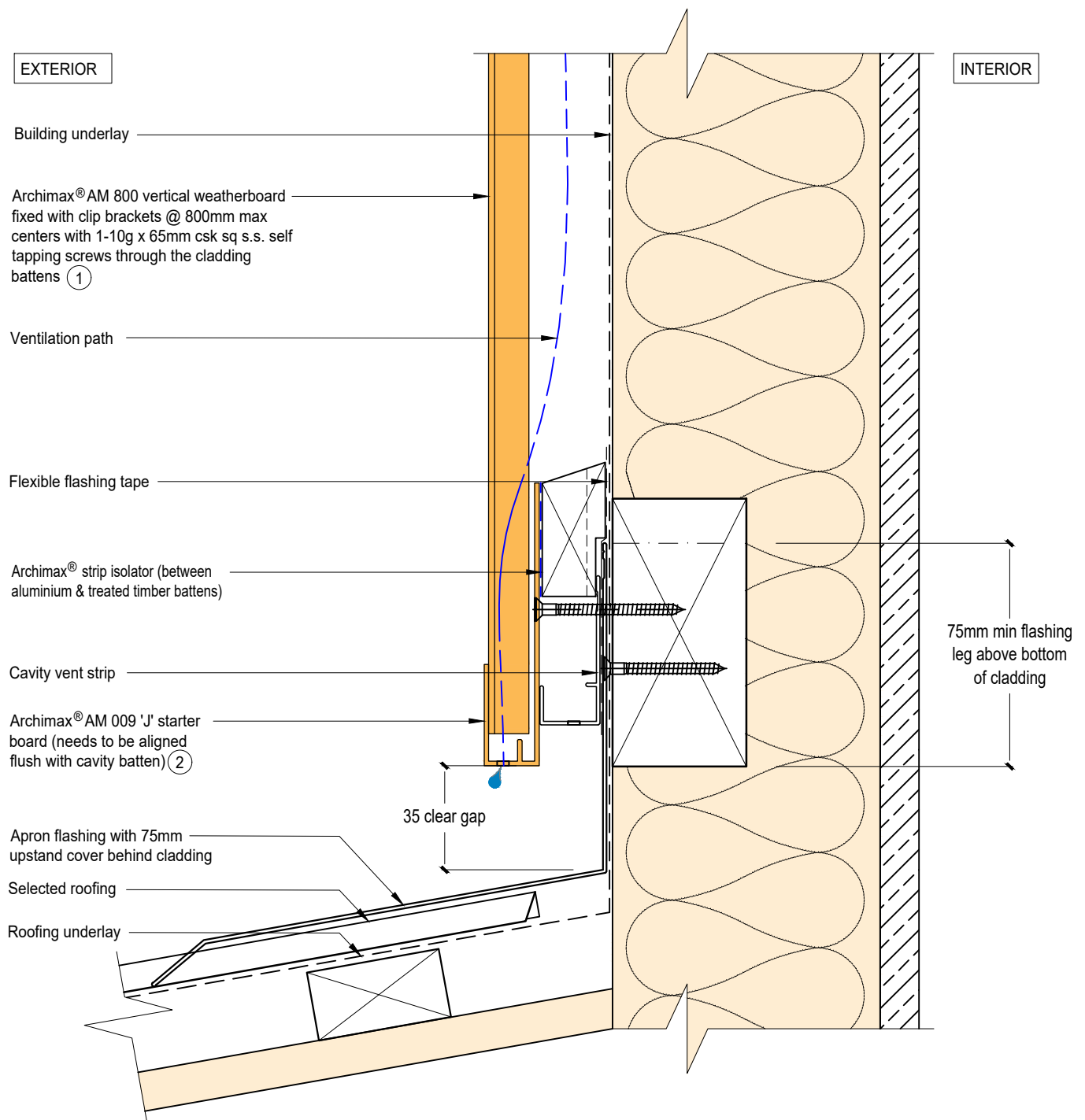
**NOTE:**

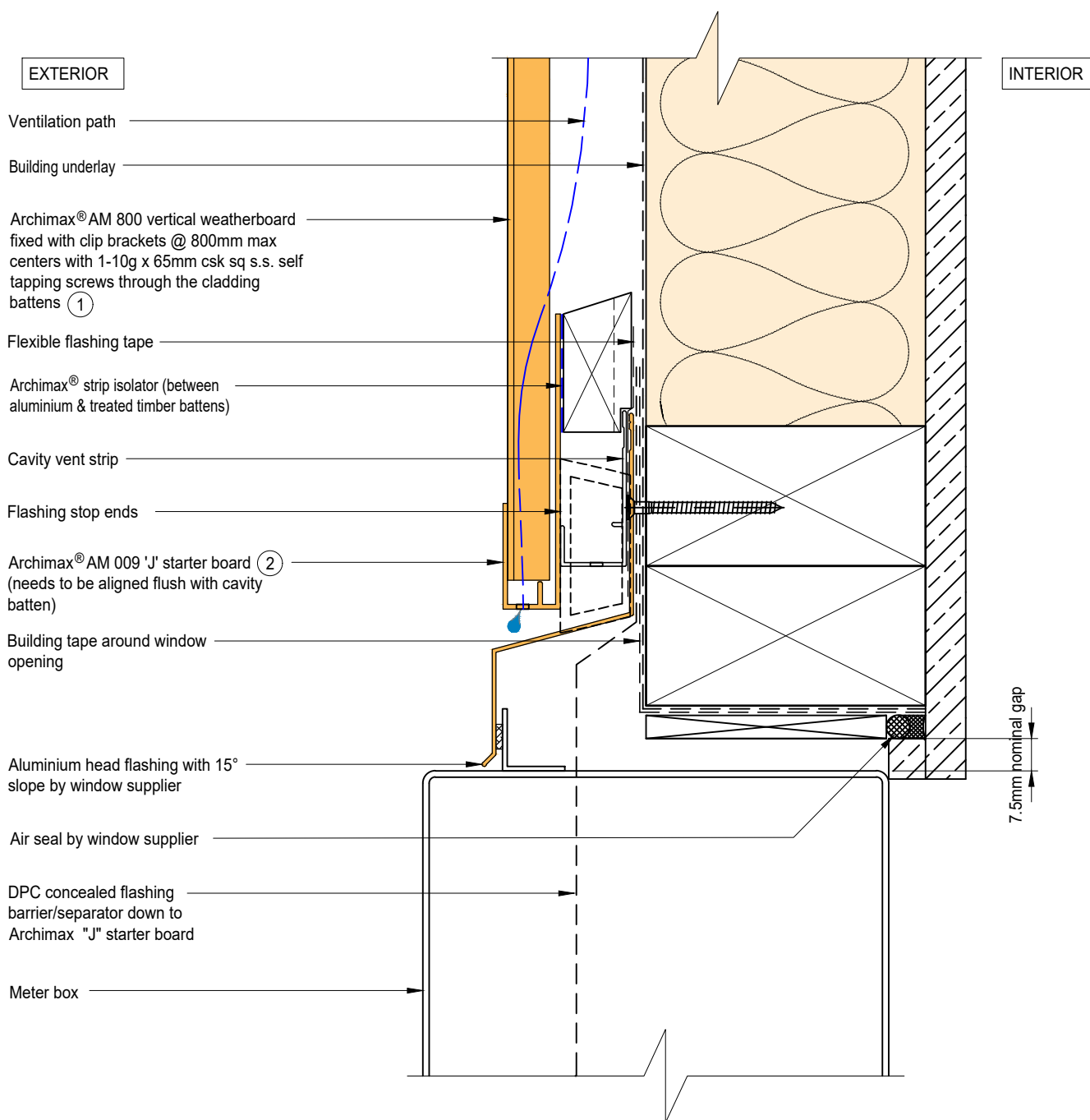
1. For vertical cladding more than 4 meters, secure 1 screw at the top for every meter of width. If it exceeds 6 meters, fix at both top and middle with one screw each.





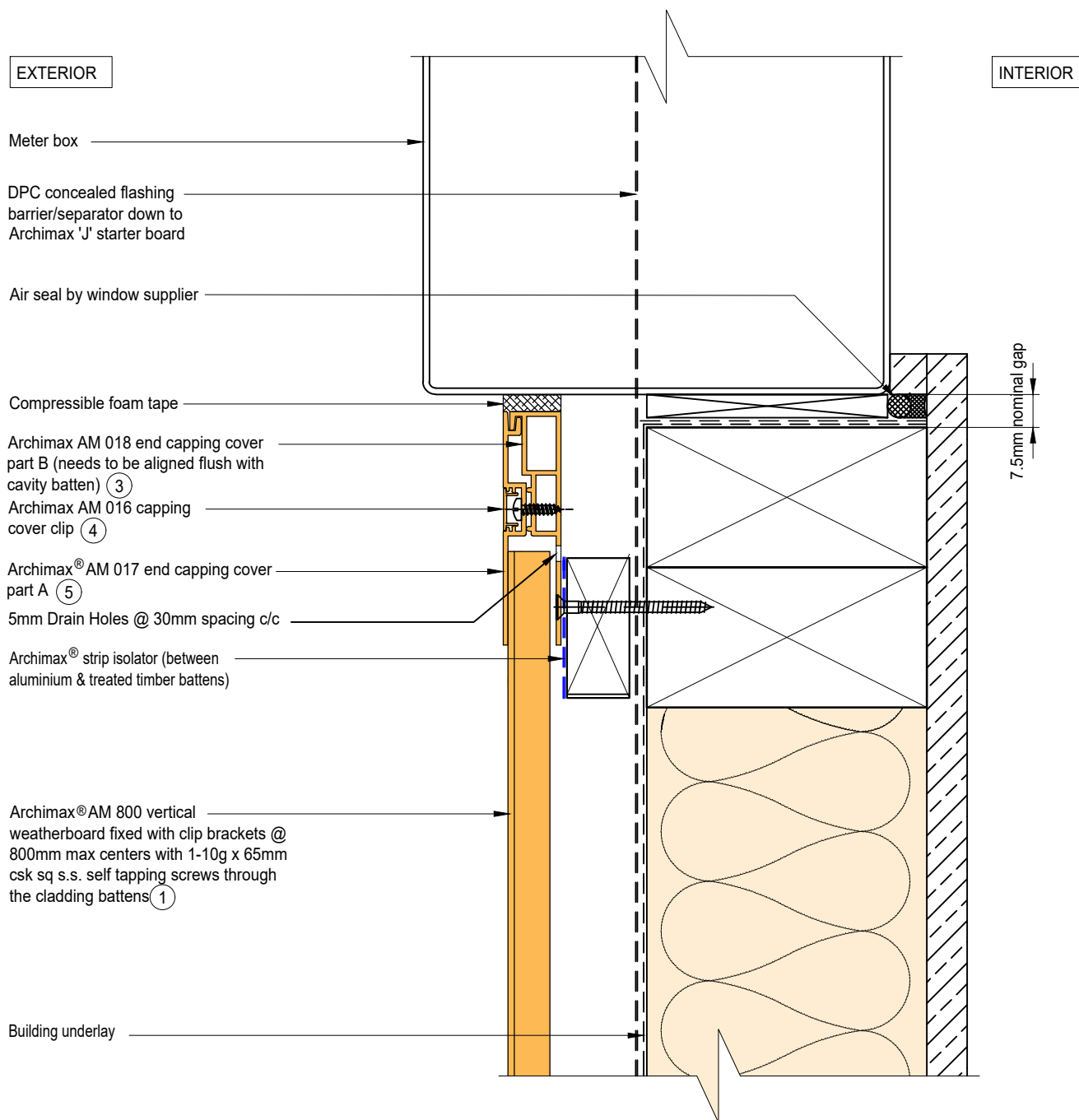




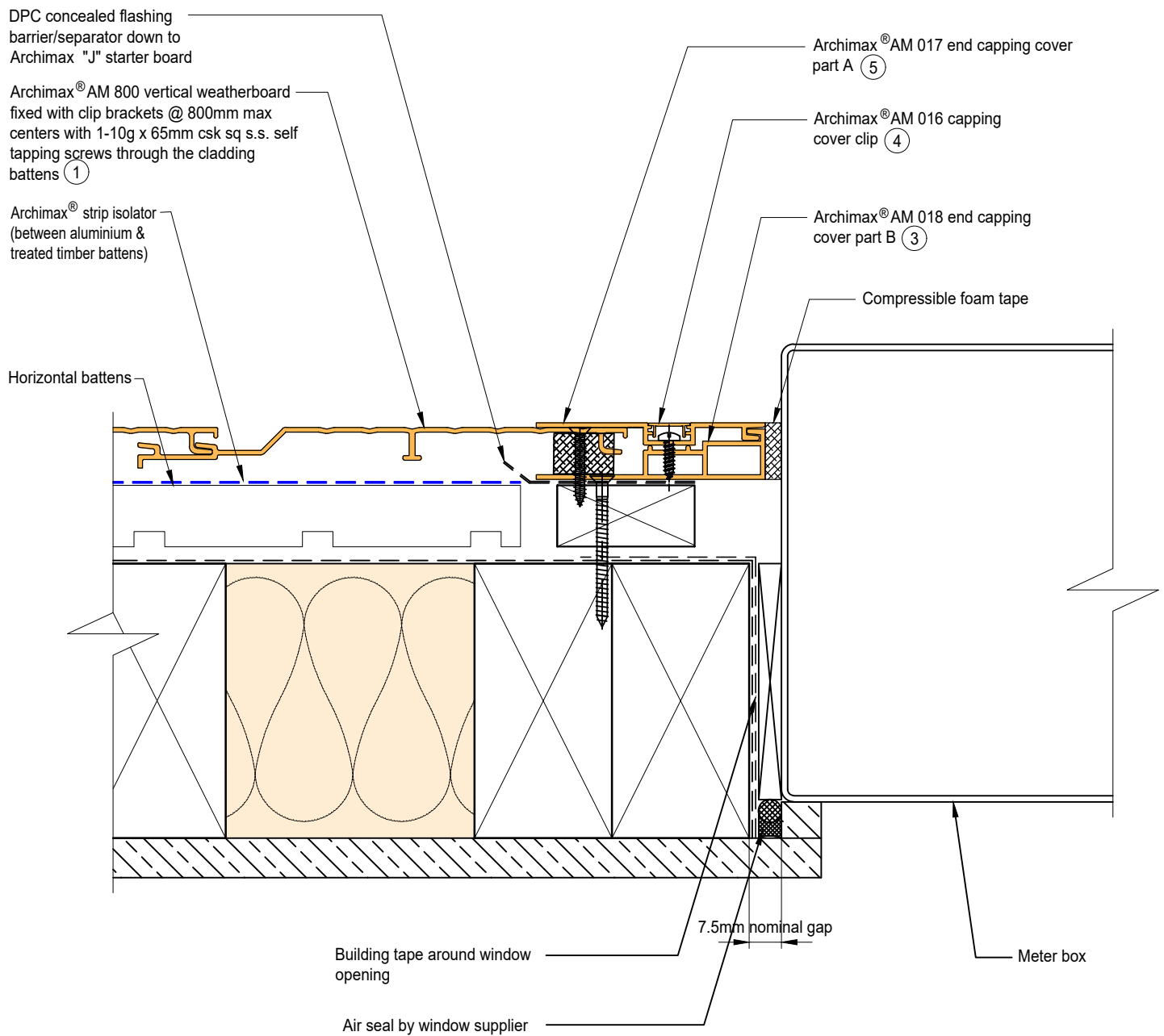


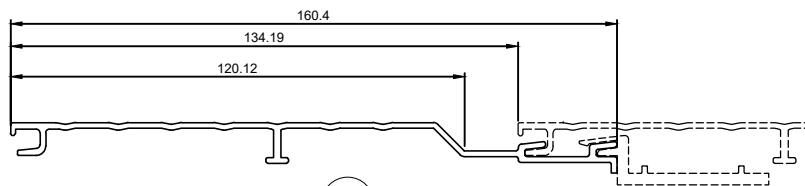
NOTE:  
STOP ENDS TO BE INSTALLED AT FLASHING ENDS





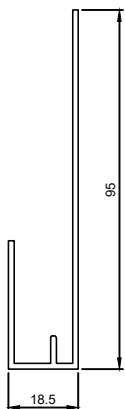




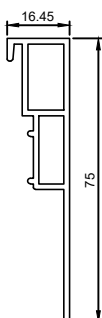


1

AM 800 Archimax Horizontal/Vertical Weatherboard



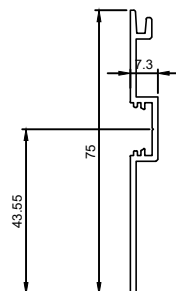
2



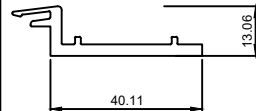
3



4



5



6

AM 009

"J" Starter Board

AM 018

End capping part B

AM 016

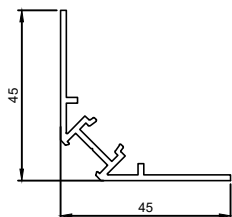
Jointer / Jamb / Sill capping cover clip

AM 017

End Capping part A

AM 050

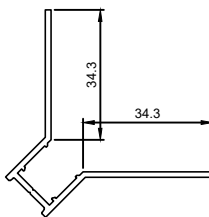
Clip Bracket



7



8



9



11

AM 019

Internal/External corner part A

AM 023

Internal Corner cover clip

AM 022

Internal Corner part B

AM 020

External Corner cover clip