



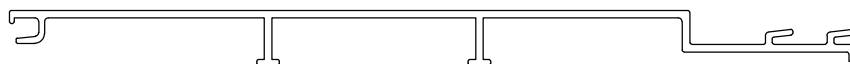
ARCHIMAX

ALUMINIUM CLADDING SYSTEM

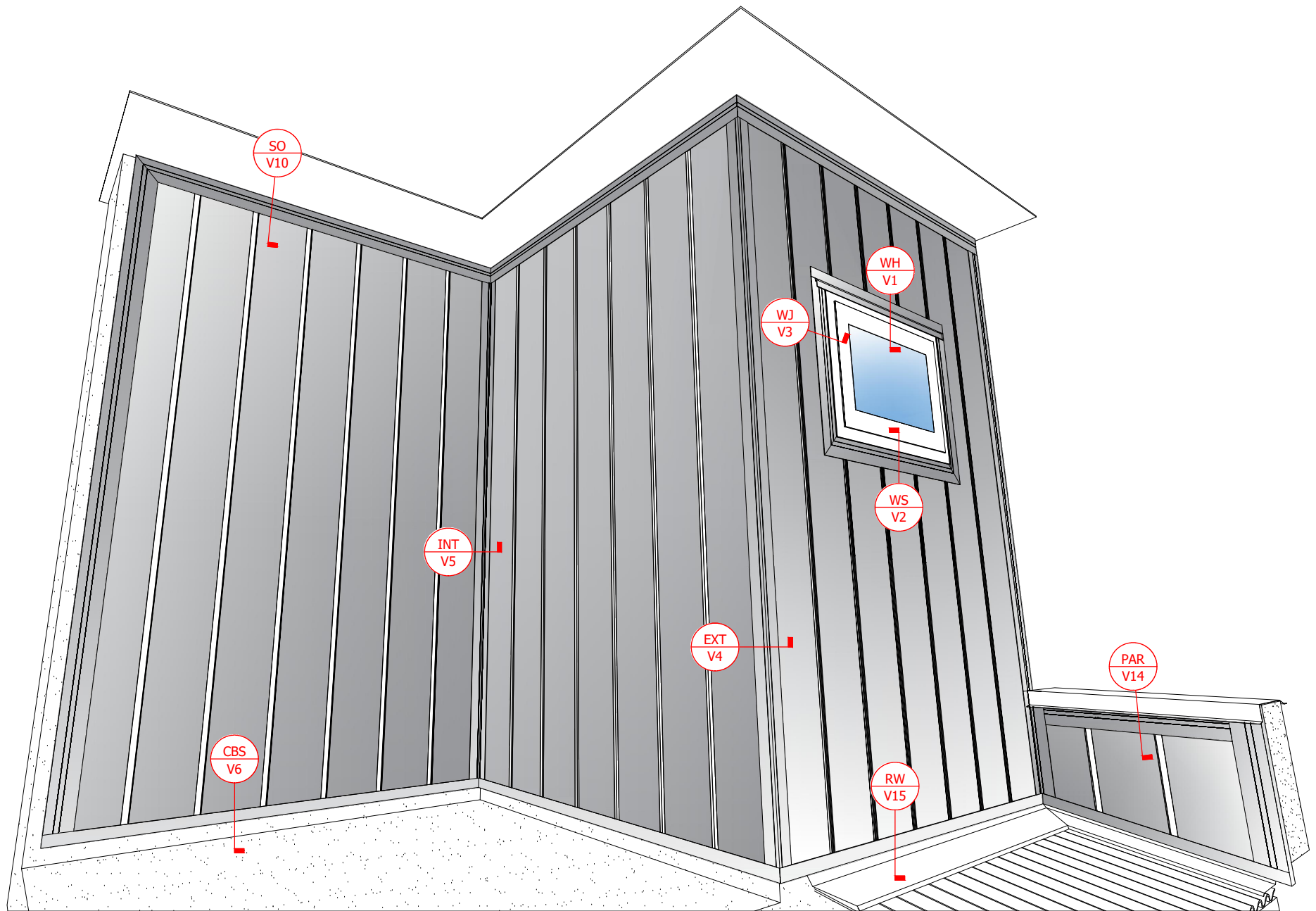
Creating more durable building envelopes

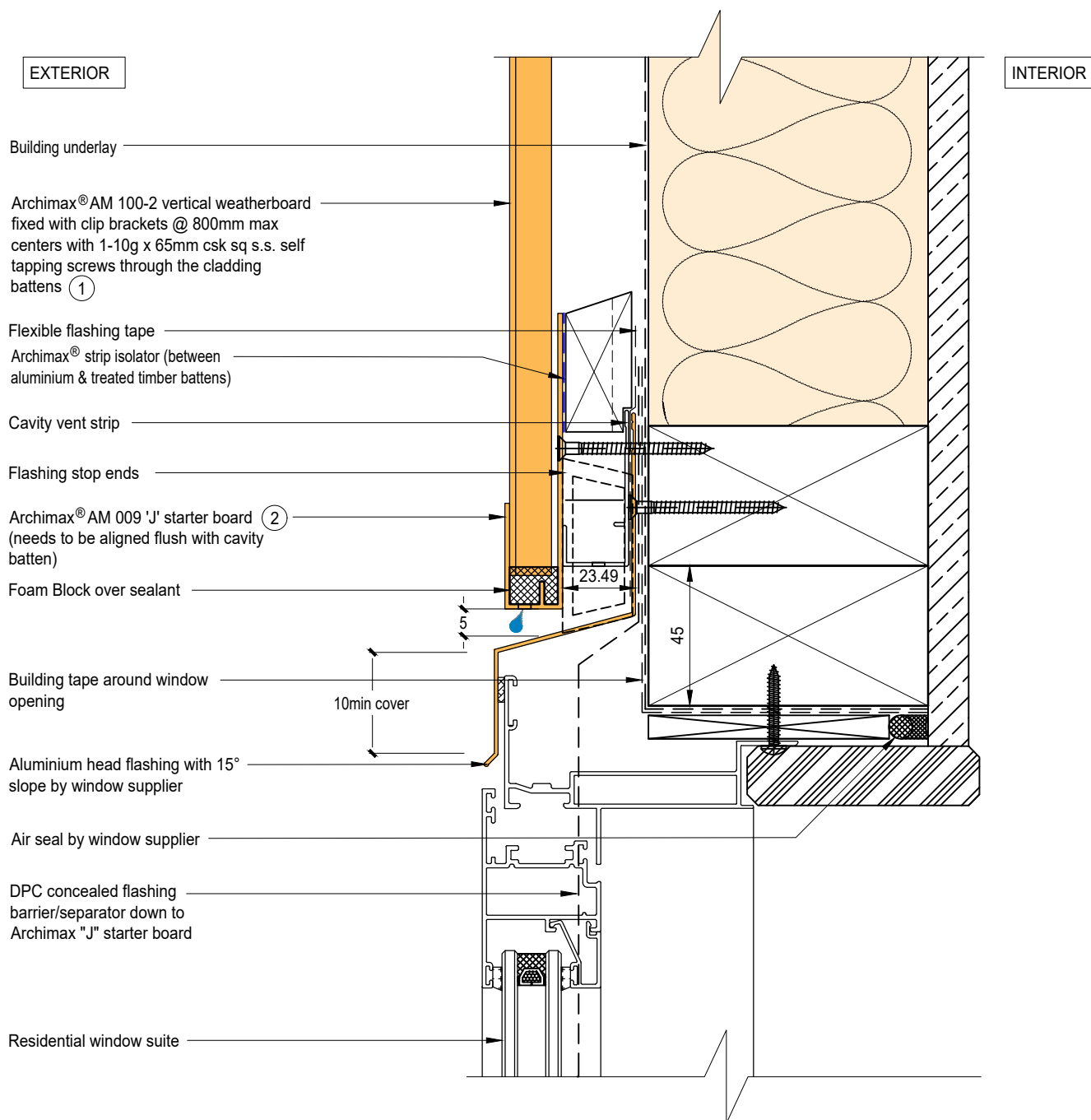
Archimax® Aluminium Cladding System AM100-2 Vertical Profile – Installation Details

Drawing No.	Rev.	Description
AM-WH-V1	E	Archimax® Window Head Detail
AM-WS-V2	E	Archimax® Window Sill Detail
AM-WJ-V3	E	Archimax® Window Jamb Detail
AM-EXT-V4	E	Archimax® External Corner Detail
AM-INT-V5	E	Archimax® Internal Corner Detail
AM-CBS-V6.1	E	Archimax® Concrete Floor "J" Starter Board Detail - Timber
AM-CBS-V6.2	E	Archimax® Concrete Floor "J" Starter Board Detail - Fire Wall
AM-HJ-V7	E	Archimax® Horizontal Joint Detail
AM-DJ-V8	E	Archimax® Deck Junction Detail
AM-PP-V9a	E	Archimax® Pipe Penetration - Plan View Detail
AM-PP-V9b	E	Archimax® Pipe Penetration - Section View Detail
AM-SO-V10	E	Archimax® Soffit Detail
AM-SO-V11.1	E	Archimax® Facia, Soffit & Wall Detail
AM-SO-V11.2	E	Archimax® Facia, Soffit & Wall (90° Soffit / Wall) Detail
AM-SO-V11.3	E	Archimax® Fascia, Board Soffit & Wall Detail
AM-NSO-V12	E	Archimax® Non - Soffit Detail
AM-BJ-V13	E	Archimax® Internal Corner Junction Detail
AM-PAR-V14	E	Archimax® Parapet with Cavity Detail
AM-RW-V15	E	Archimax® Lower Roof Wall Junction Detail
AM-MB-V16	E	Archimax® Meter Box Head Detail
AM-MB-V17	E	Archimax® Meter Box Sill Detail
AM-MB-V18	E	Archimax® Meter Box Jamb Detail



AM100-2
coverage: 200mm

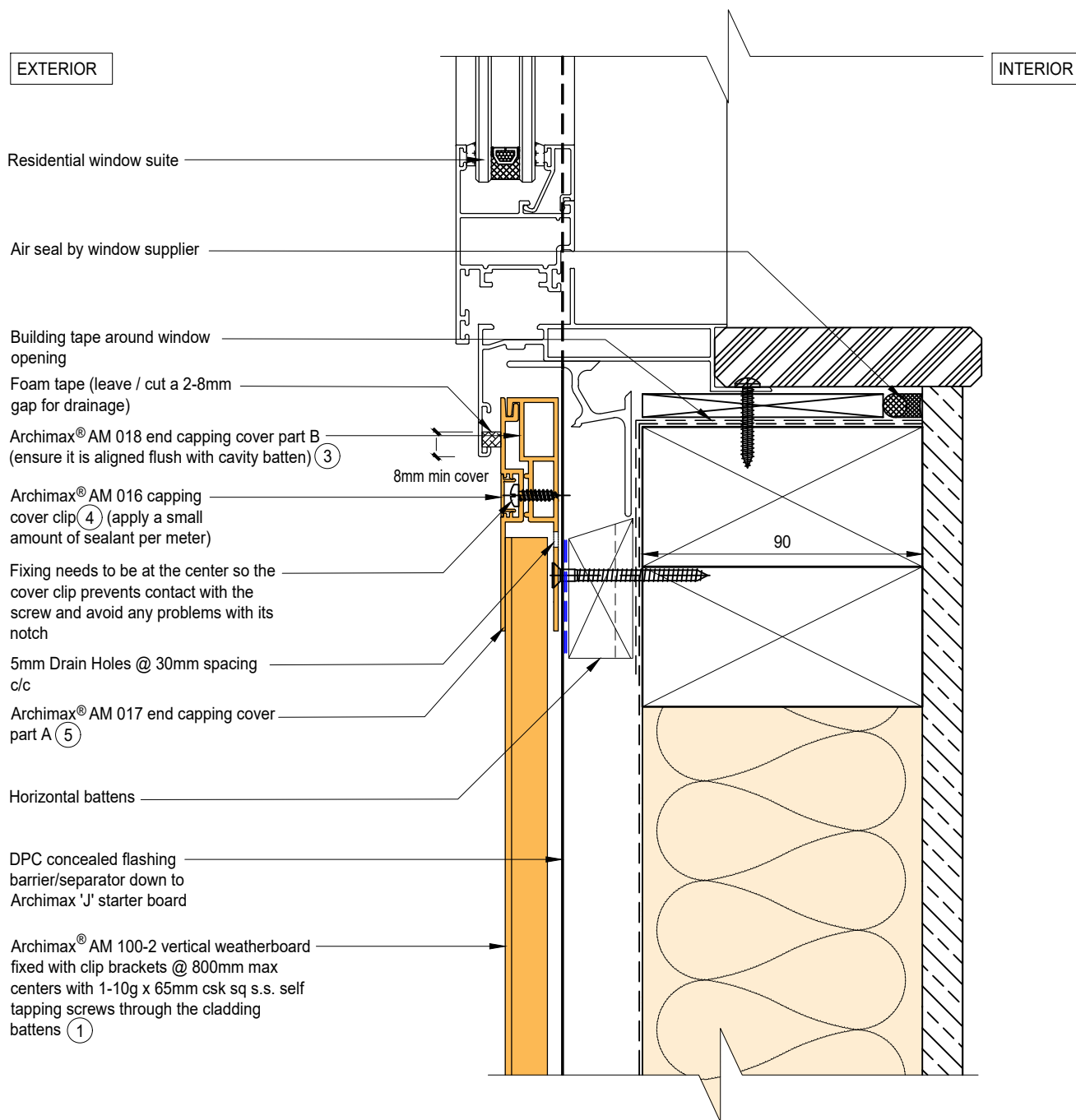




NOTE:

1. Stop ends to be installed at flashing ends.
2. Minimum Clearance between the AIR BARRIER and WINDOW JOINERY to be 45mm. Window Joinery should not be permanently fixed until cladding installed.
3. Sealant on each ends of the "J" starter board to prevent water going into cavity.
4. Timber Cavity Batten at 800mm max spacing.
5. Secure the AM029 clip with 1 screw for standard use, or 2 screws for added support





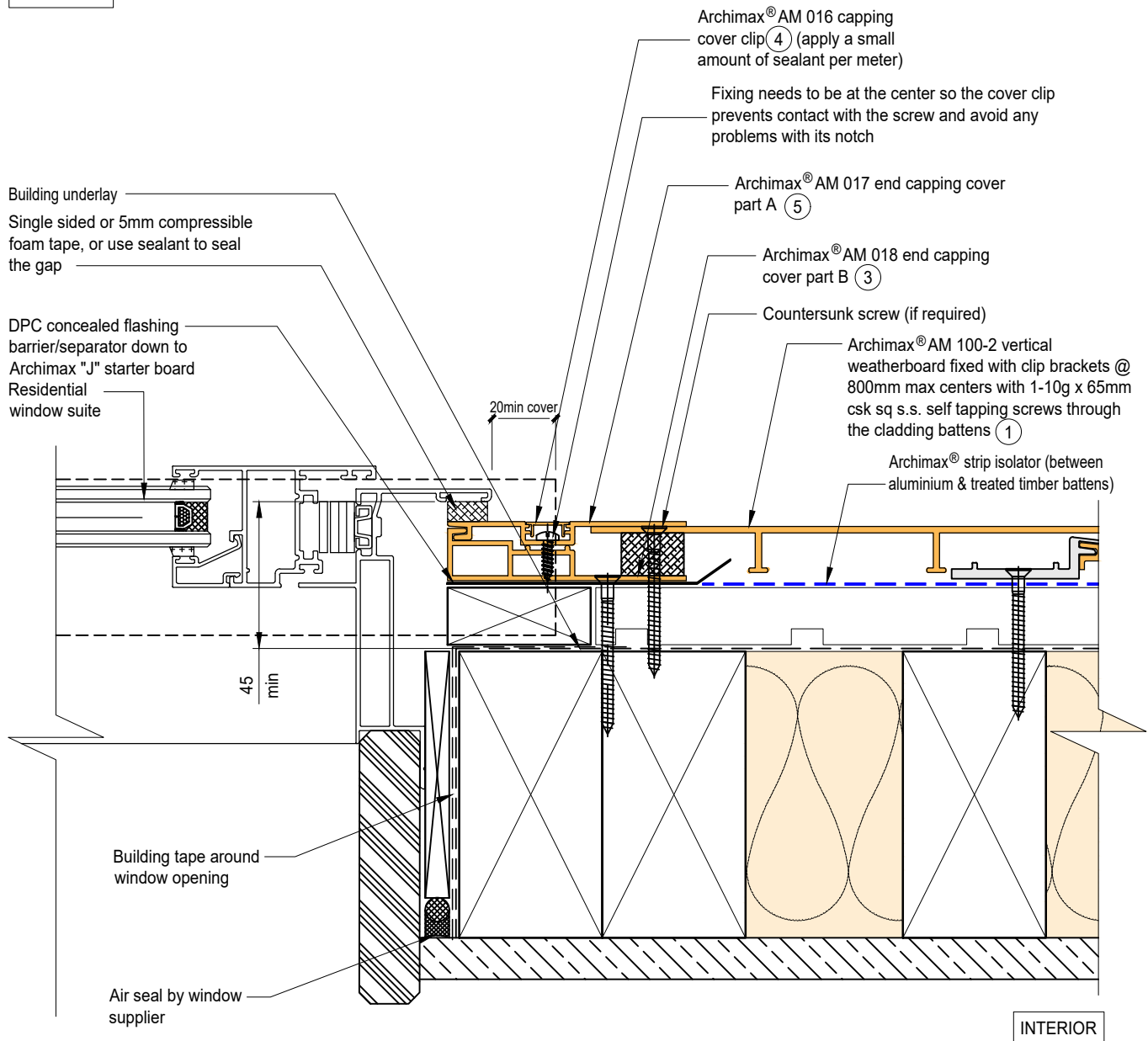
NOTE:

1. Minimum Clearance between the AIR BARRIER and WINDOW JOINERY to be 45mm. Window Joinery should not be permanently fixed until cladding installed.
2. Apply a small amount of sealant to every meter of the AM016 cover clip. Report to Archimax if AM016 cover clips are loose or tight. Do not force to install.
3. Timber Cavity Batten at 800mm max spacing.
4. Secure the AM029 clip with 1 screw for standard use, or 2 screws for added support



 <p>ARCHIMAX ALUMINIUM CLADDING SYSTEM <i>Creating more durable building envelopes</i> www.archimax.co.nz</p>	System AM100-2-VERTICAL WEATHERBOARD	Detail ARCHIMAX® WINDOW SILL DETAIL	Drawing No. AM-WS-V2	Rev. E
	<p>This drawing is the copyright of Archimax Limited. Modification of details for job specification requirements must be approved by Archimax Ltd. The building designer is ultimately responsible to ensure all building work is designed and constructed according to building code requirements, best code of practice industry guidelines. All components must be supplied by Archimax. Archimax reserves the right to alter or upgrade details at any time without prior notice.</p>		Scale 1:2	Date NOV24

EXTERIOR

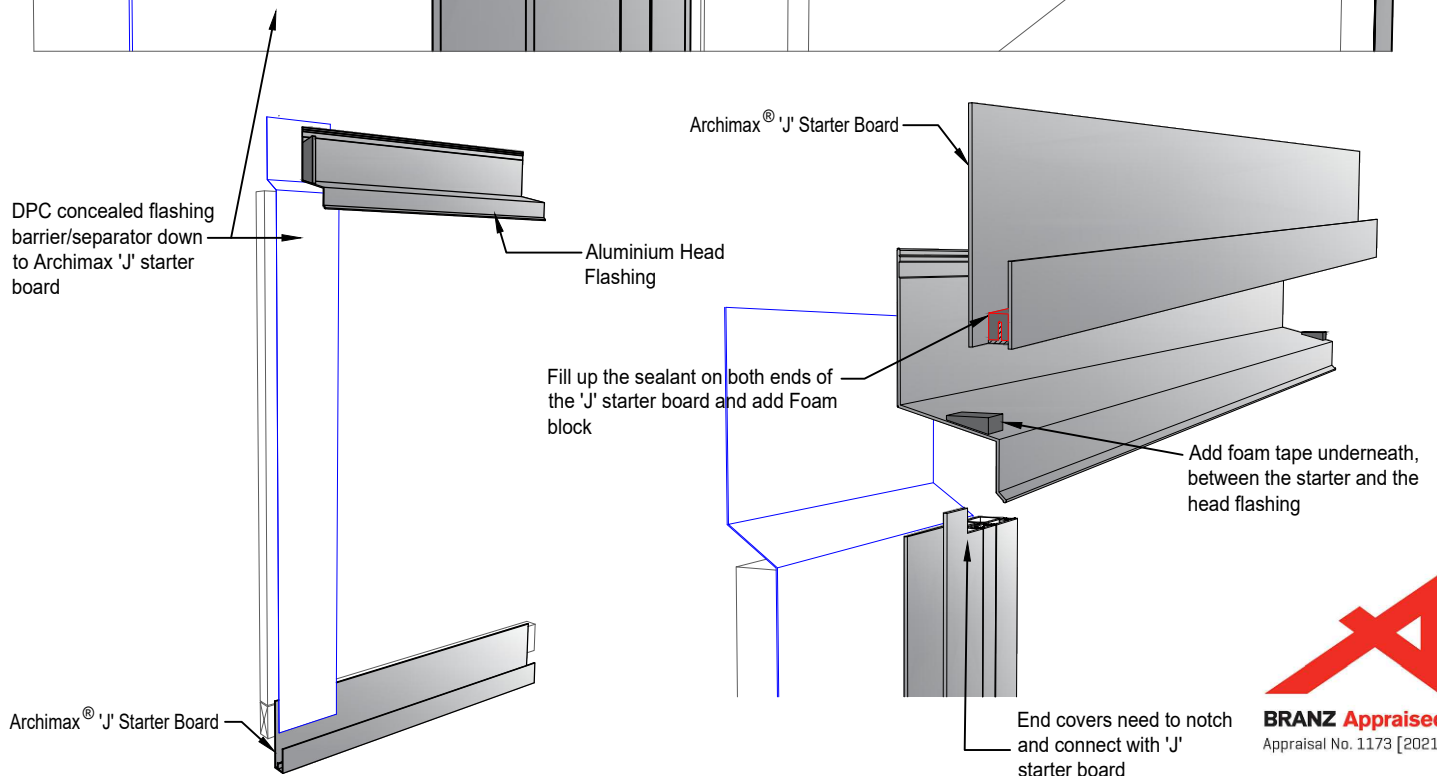
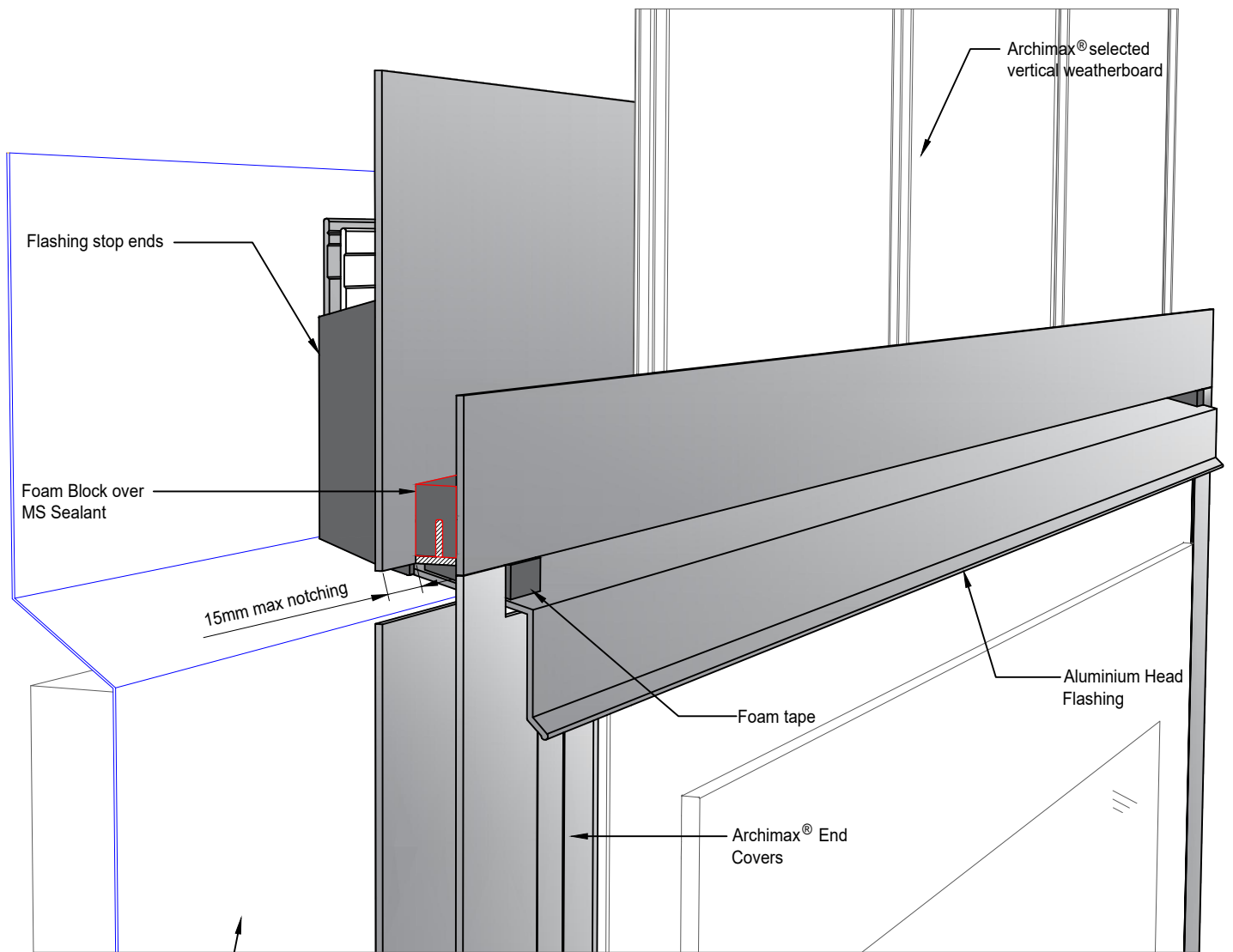


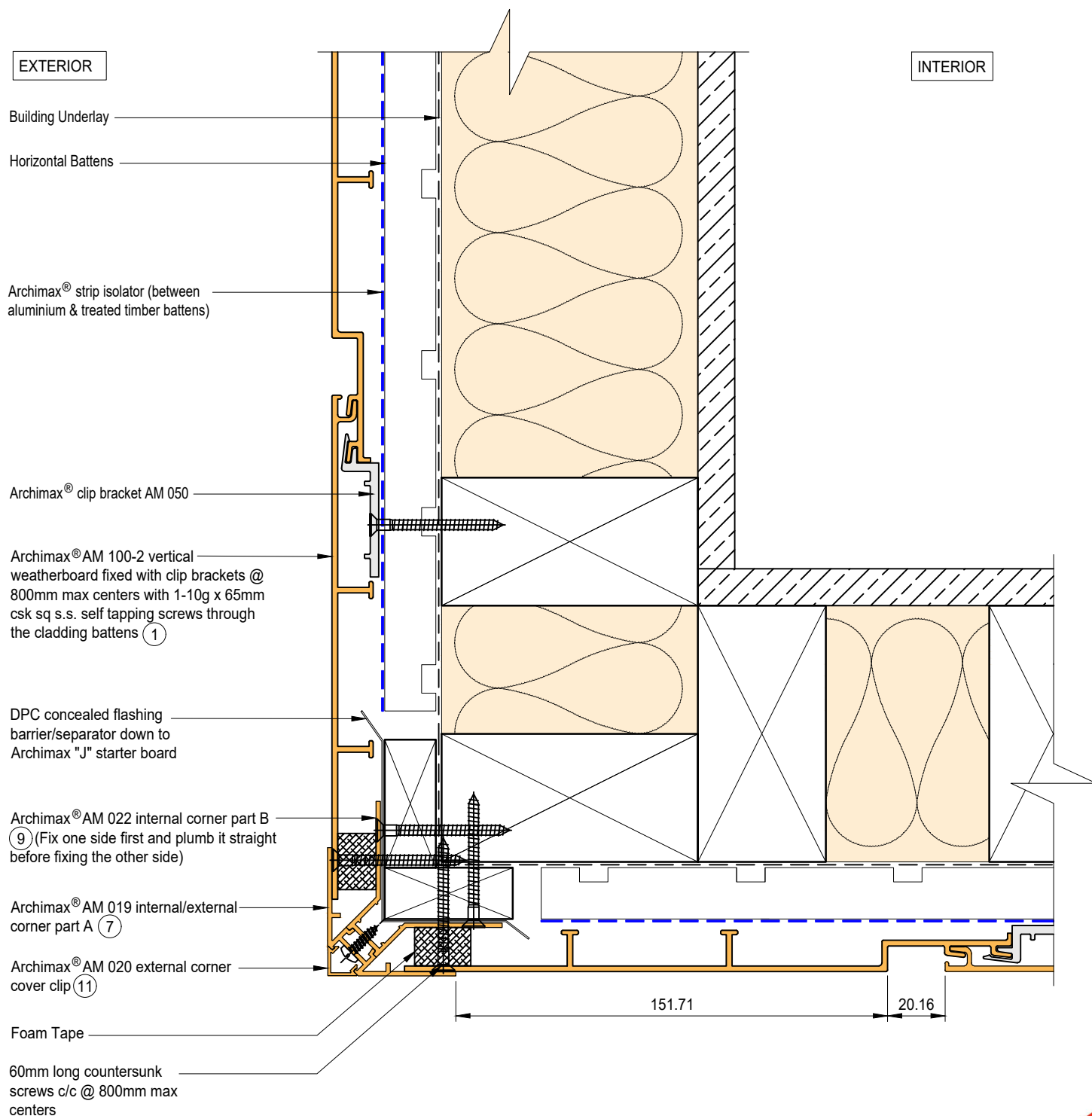
INTERIOR

NOTE:

1. Minimum Clearance between the AIR BARRIER and WINDOW JOINERY to be 45mm. Window Joinery should not be permanently fixed until cladding installed.
2. Ideally, use 5mm compressible foam tape, or use sealant to seal the gap between window frame and Archimax cladding depending on the site situation.
3. Apply a small amount of sealant to every meter of the AM016 cover clip. Report to Archimax if AM016 cover clips are loose or tight. Do not force to install.



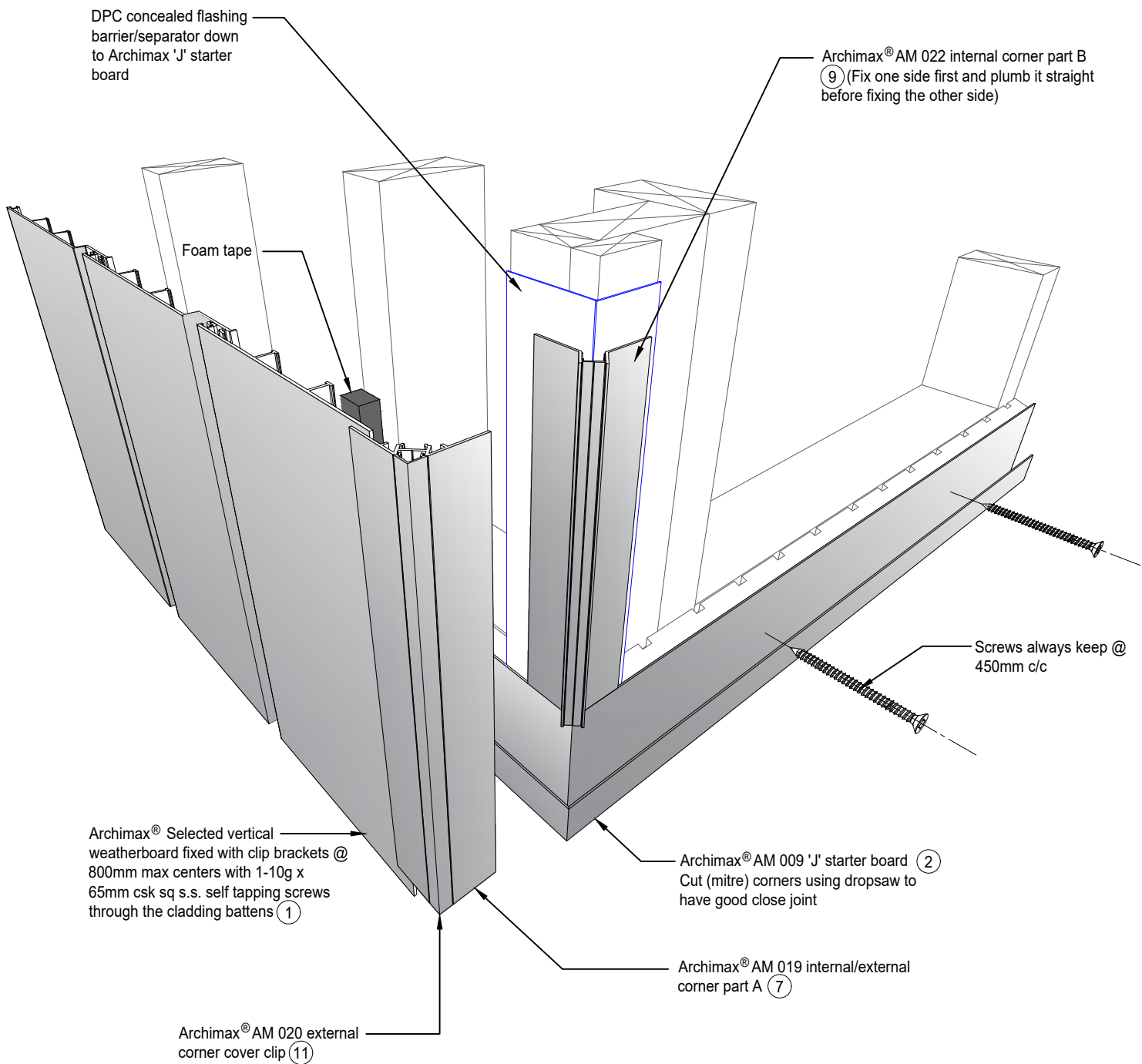


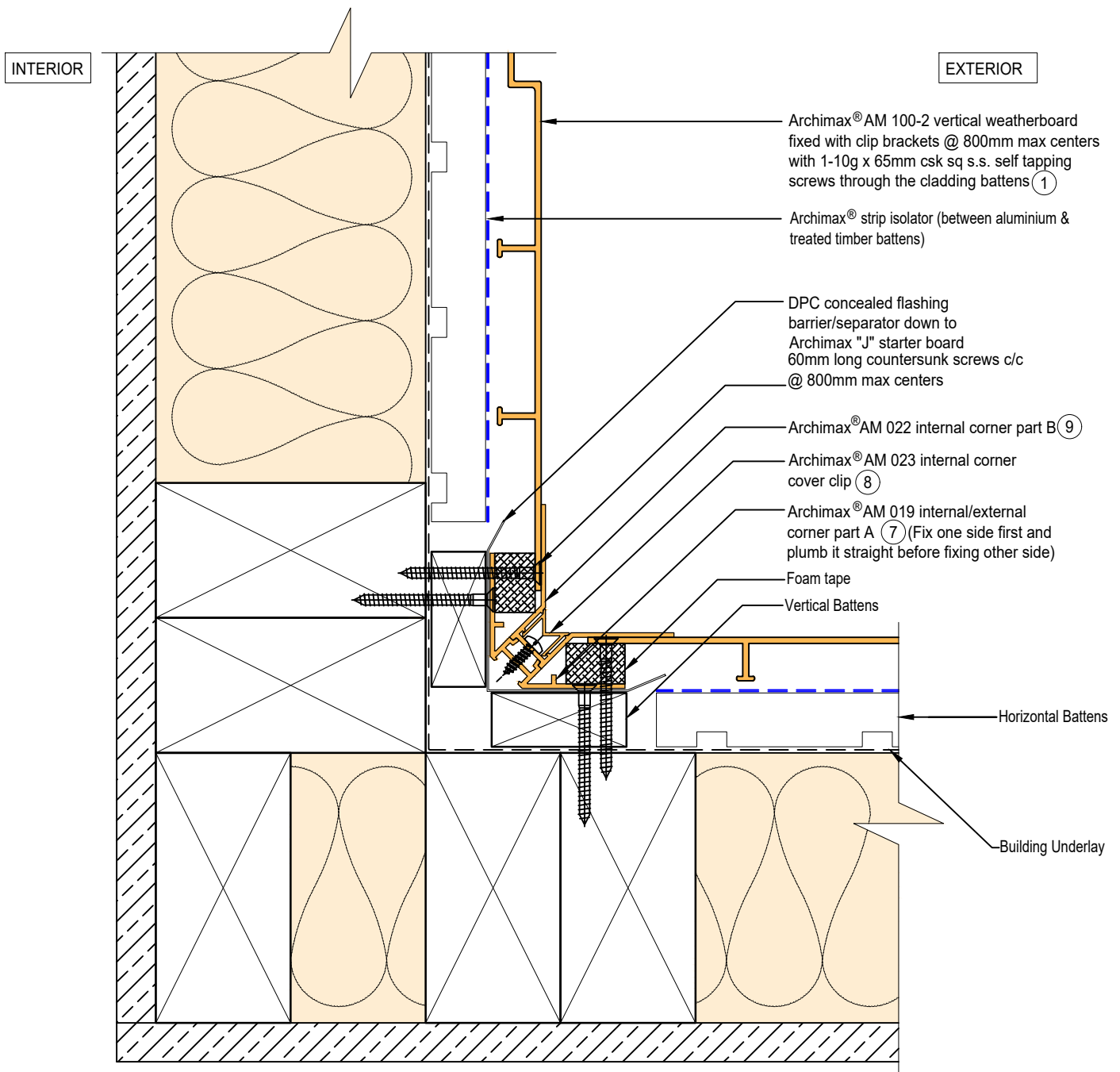


NOTE:

1. Fix the External Corner part B on one side first and plumb it straight before fixing the other side to avoid twisting.



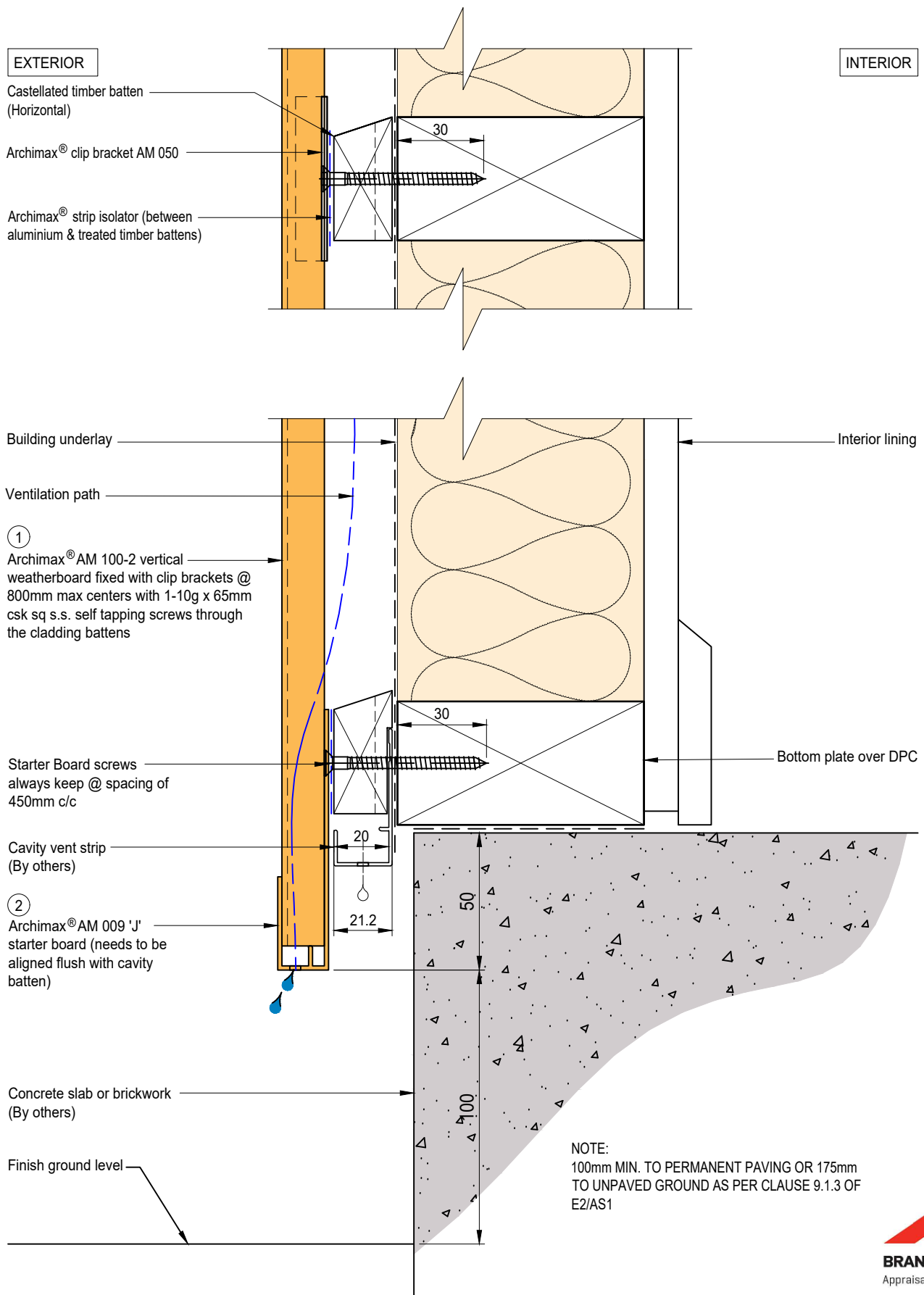




NOTE:

1. Fix the AM 019 internal/external corner part A on one side first and plumb it straight before fixing the other side to avoid twisting.





EXTERIOR

INTERIOR

Archimax® Aluminium Batten
AMB 01 (Horizontal)

Archimax® clip bracket AM 050

Rigid air barrier
(FRR)

Ventilation path

①
Archimax® AM 100-2 vertical
weatherboard fixed with clip brackets @
800mm max centers with 1-10g x 65mm
csk sq s.s. self tapping screws through
the cladding battens

2*10g x 70mm ST screw @ 300mm c/c

Starter Board screws
always keep @ spacing of
450mm c/c

Cavity vent strip
(By others)

②
Archimax® AM 009 'J'
starter board (needs to be
aligned flush with
aluminium batten)

Concrete slab or brickwork
(By others)

Finish ground level

Interior lining

Bottom plate over DPC

NOTE:
100mm MIN. TO PERMANENT PAVING OR 175mm
TO UNPAVED GROUND AS PER CLAUSE 9.1.3 OF
E2/AS1

EXTERIOR

INTERIOR

Building underlay

Archimax® AM 100-2 vertical weatherboard
fixed with clip brackets @ 800mm max
centers with 1-10g x 65mm csk sq s.s. self
tapping screws through the cladding battens ①

Flexible flashing tape

Archimax® strip isolator (between
aluminium & treated timber
battens)

Cavity vent strip

Archimax® AM 009 'J' starter board ②
(needs to be aligned flush with cavity
batten)

Inter-Storey flashing
stop ends

Archimax® AM 018 end capping cover part B
(ensure it is aligned flush with cavity
batten) ③

Archimax® AM 016 capping
cover clip ④ (apply a small
amount of sealant per meter)

Archimax® AM 017 end capping cover
part A ⑤

Horizontal battens

13

5

21.4

NOTE:

STOP ENDS TO BE INSTALLED AT INTER-STOREY FLASHING ENDS

BRANZ Appraised
Appraisal No. 1173 [2021]

ARCHIMAX
ALUMINIUM CLADDING SYSTEM
Creating more durable building envelopes
www.archimax.co.nz

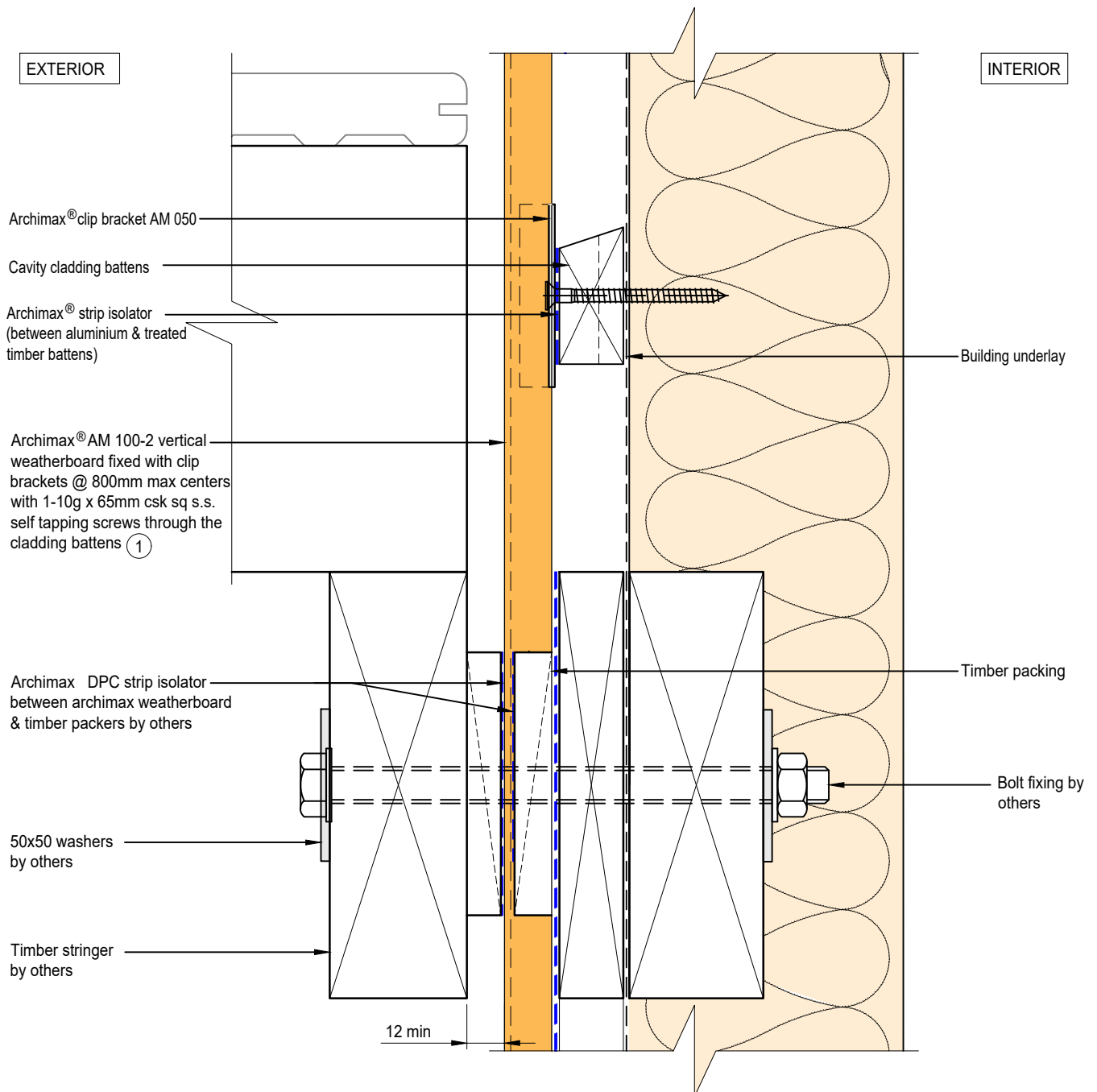
System
AM100-2-VERTICAL WEATHERBOARD

Detail
ARCHIMAX® HORIZONTAL JOINT
DETAIL

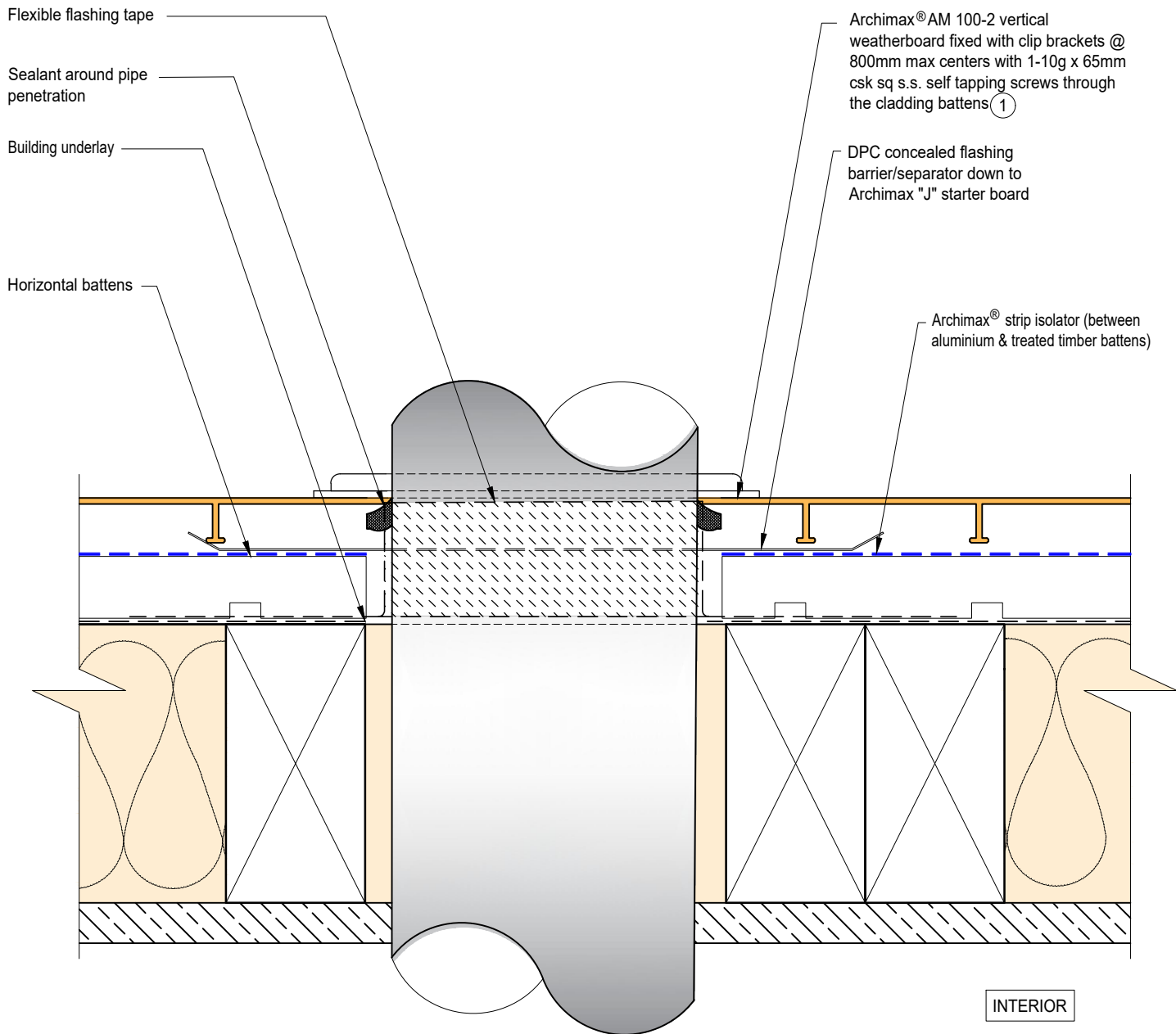
Drawing No. Rev.
AM-HJ-V7 E

This drawing is the copyright of Archimax Limited. Modification of details for job specification requirements must be approved by Archimax Ltd. The building designer is ultimately responsible to ensure all building work is designed and constructed according to building code requirements, best code of practice industry guidelines. All components must be supplied by Archimax. Archimax reserves the right to alter or upgrade details at any time without prior notice.

Scale Date
1:2 NOV24



EXTERIOR



EXTERIOR

INTERIOR

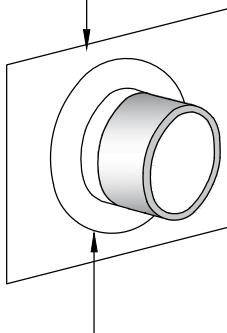
Archimax® AM 100-2 vertical weatherboard
fixed with clip brackets @ 800mm max
centers with 1-10g x 65mm csk sq s.s. self
tapping screws through the cladding battens

①

Archimax® clip bracket AM 050

Horizontal battens

DPC concealed flashing
barrier/separator down to
Archimax "J" starter board



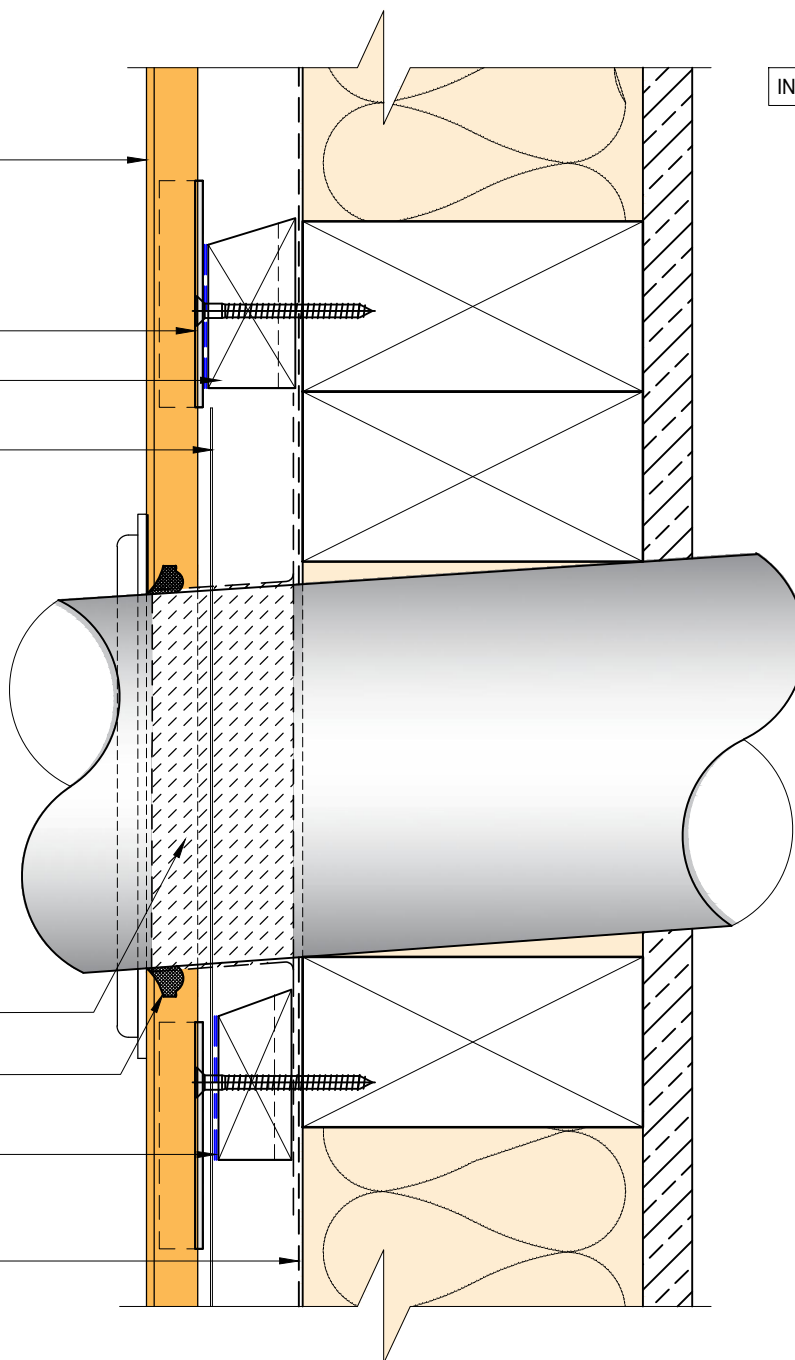
Pipe cover flange bed sealed to
Archimax Cladding by others

Flexible flashing tape

Sealant around pipe
penetration

Archimax® strip isolator (between
aluminium & treated timber battens)

Building underlay



EXTERIOR

INTERIOR

5mm compressible foam tape, or use sealant to seal the gap

Archimax® AM 018 end capping cover part B (3)

Archimax® AM 016 capping cover clip (4)

Archimax® AM 017 end capping cover part A (5)

Fixing needs to be at the center so the cover clip prevents contact with the screw and avoid any problems with its notch

5mm Drain Holes @ 30mm spacing c/c

Countersunk screws

- for vertical cladding above 4 meters, secure 1 screw at the top for every meter of width.
- for vertical cladding above 6 meters, secure 1 screw at the top & middle for every meter of width.

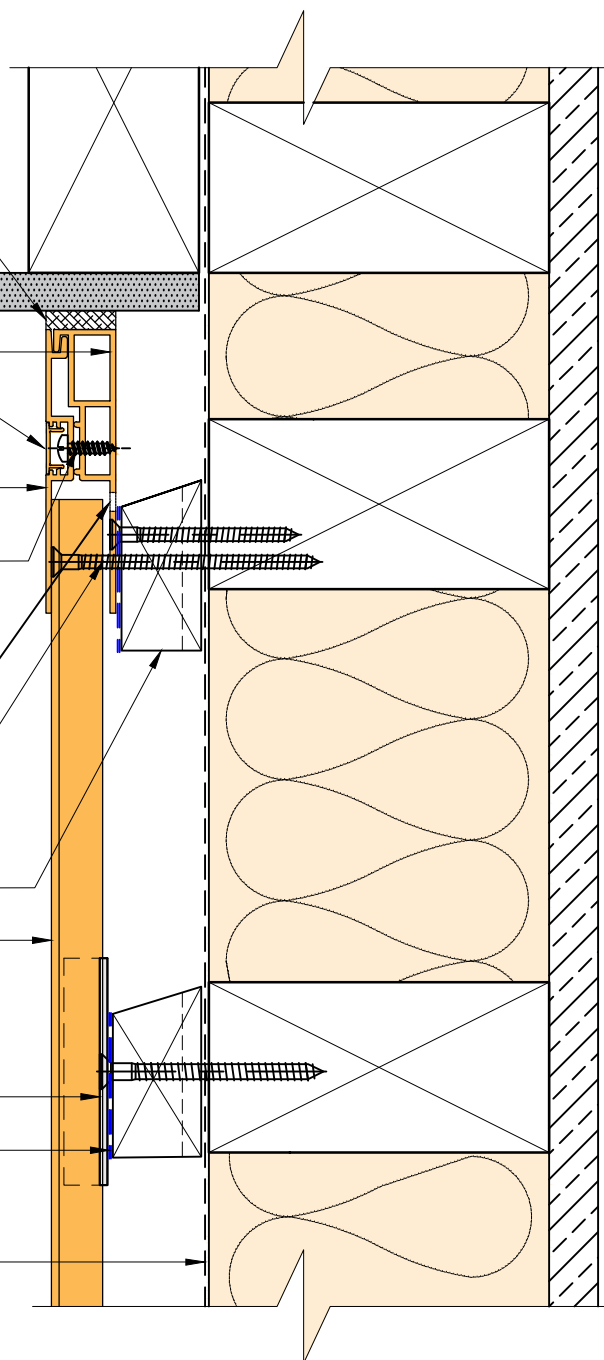
Horizontal battens

Archimax® AM 100-2 vertical weatherboard fixed with clip brackets @ 800mm max centers with 1-10g x 65mm csk sq s.s. self tapping screws through the cladding battens (1)

Archimax® clip bracket AM 050

Archimax® strip isolator (between aluminium & treated timber battens)

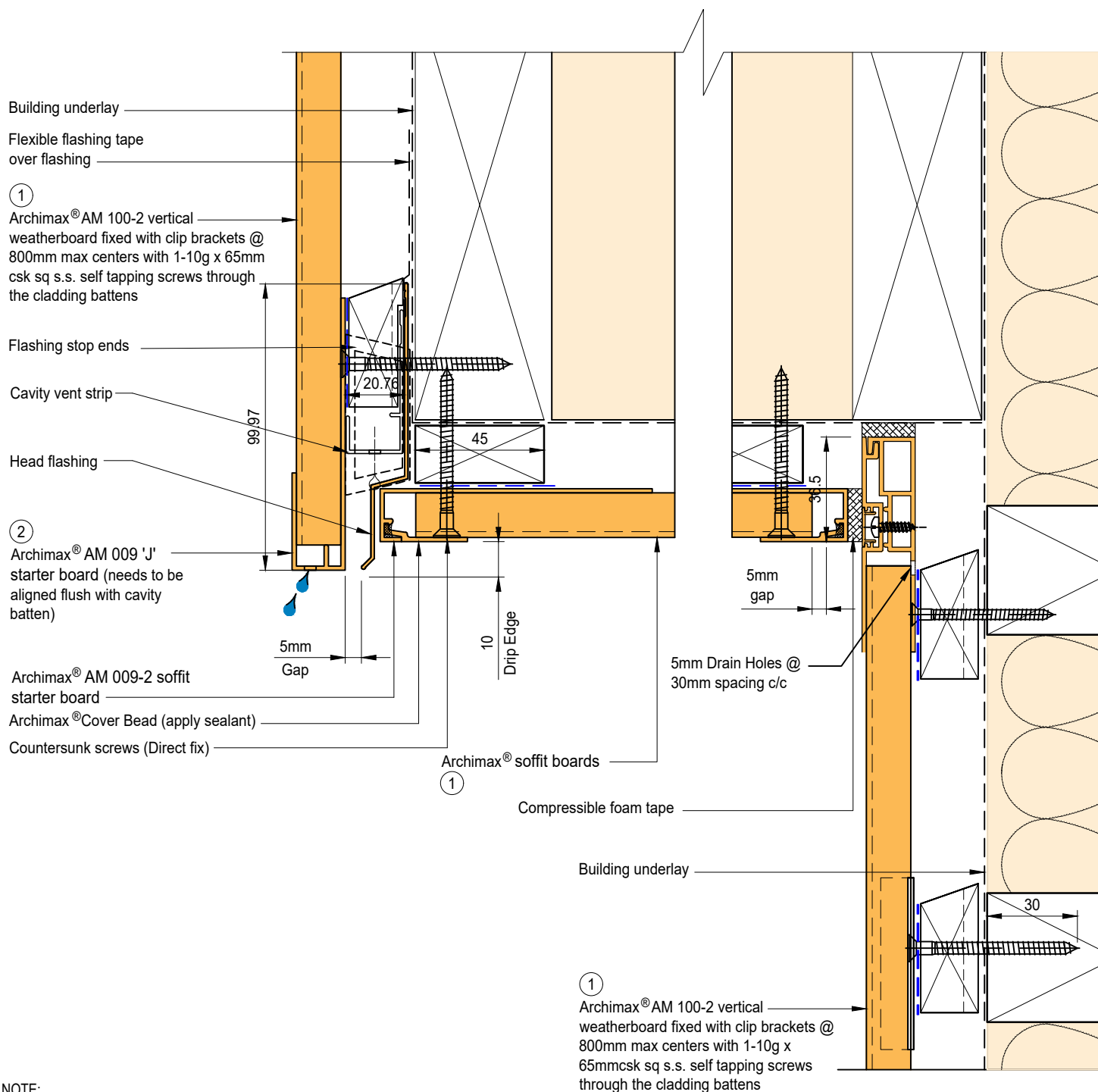
Building underlay



NOTE:

1. Ideally, use 5mm compressible foam tape, or use sealant to seal the gap between soffit and Archimax cladding depending on the site situation.
2. For vertical cladding more than 4 meters, secure 1 screw at the top for every meter of width. If it exceeds 6 meters, fix at both top and middle with one screw each.
3. Timber Cavity Batten at 800mm max spacing.
4. Secure the AM029 clip with 1 screw for standard use, or 2 screws for added support

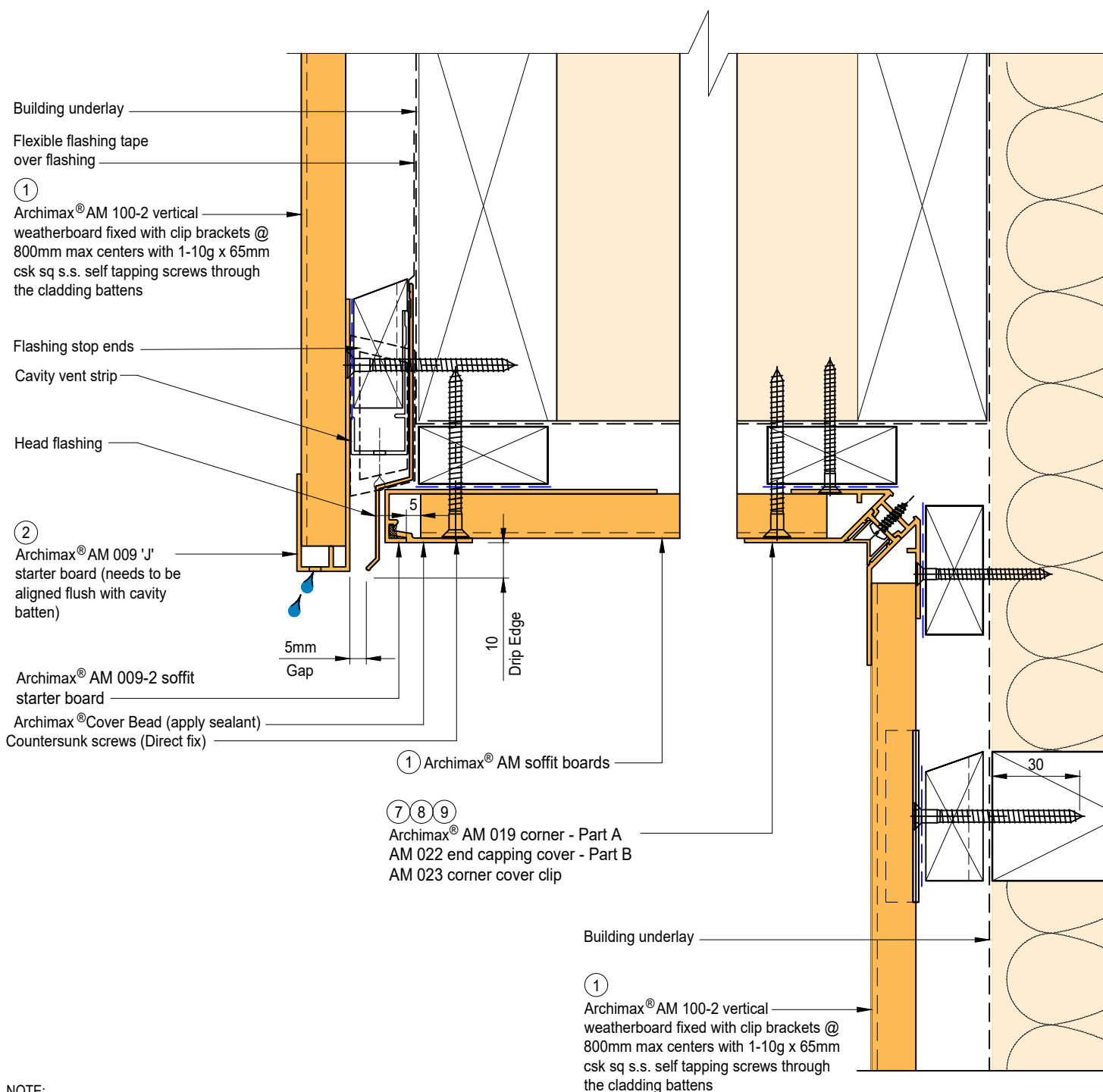




NOTE:

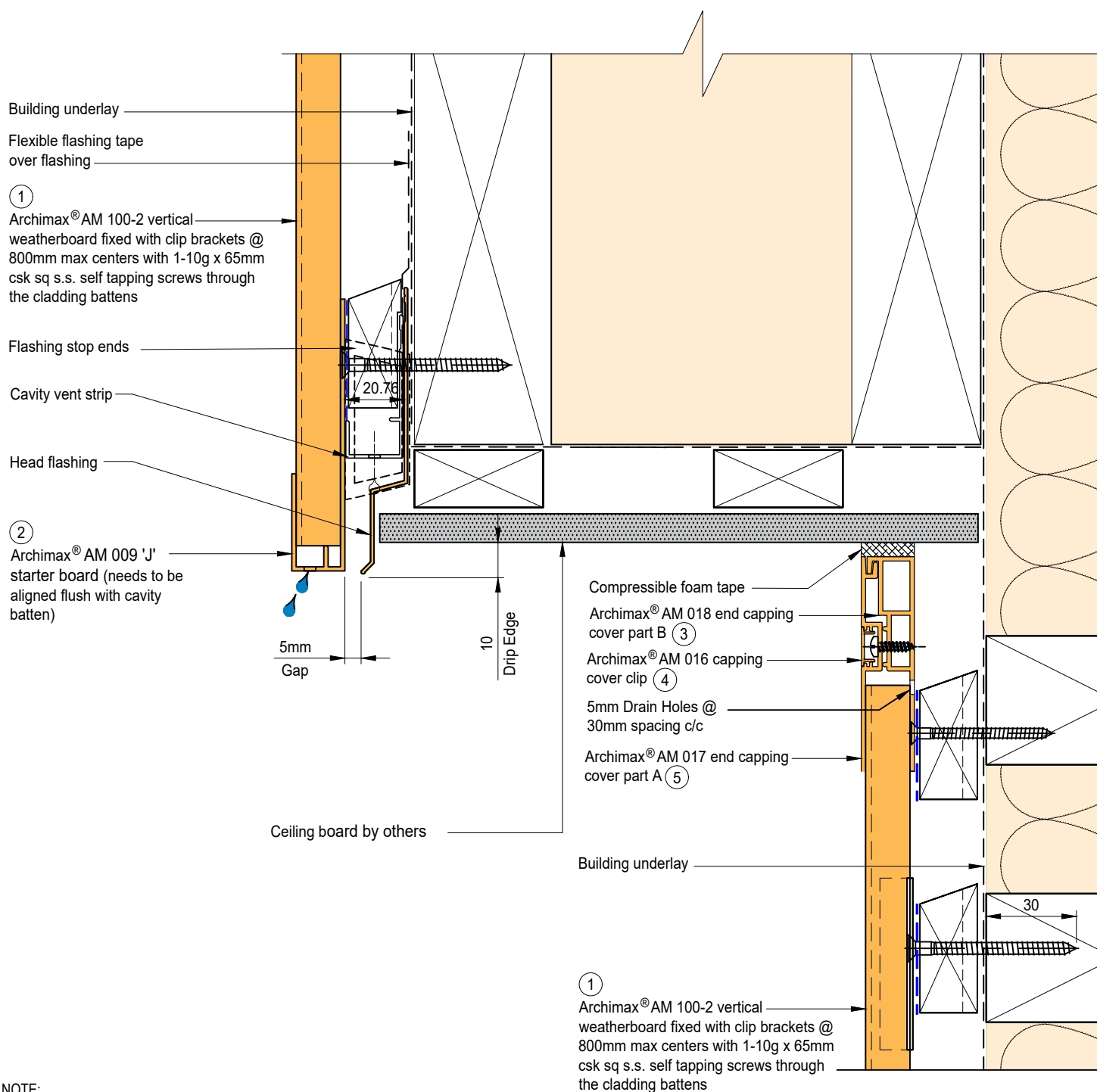
1. Stop ends to be installed at flashing ends.
2. Soffit requires direct fixing without brackets.





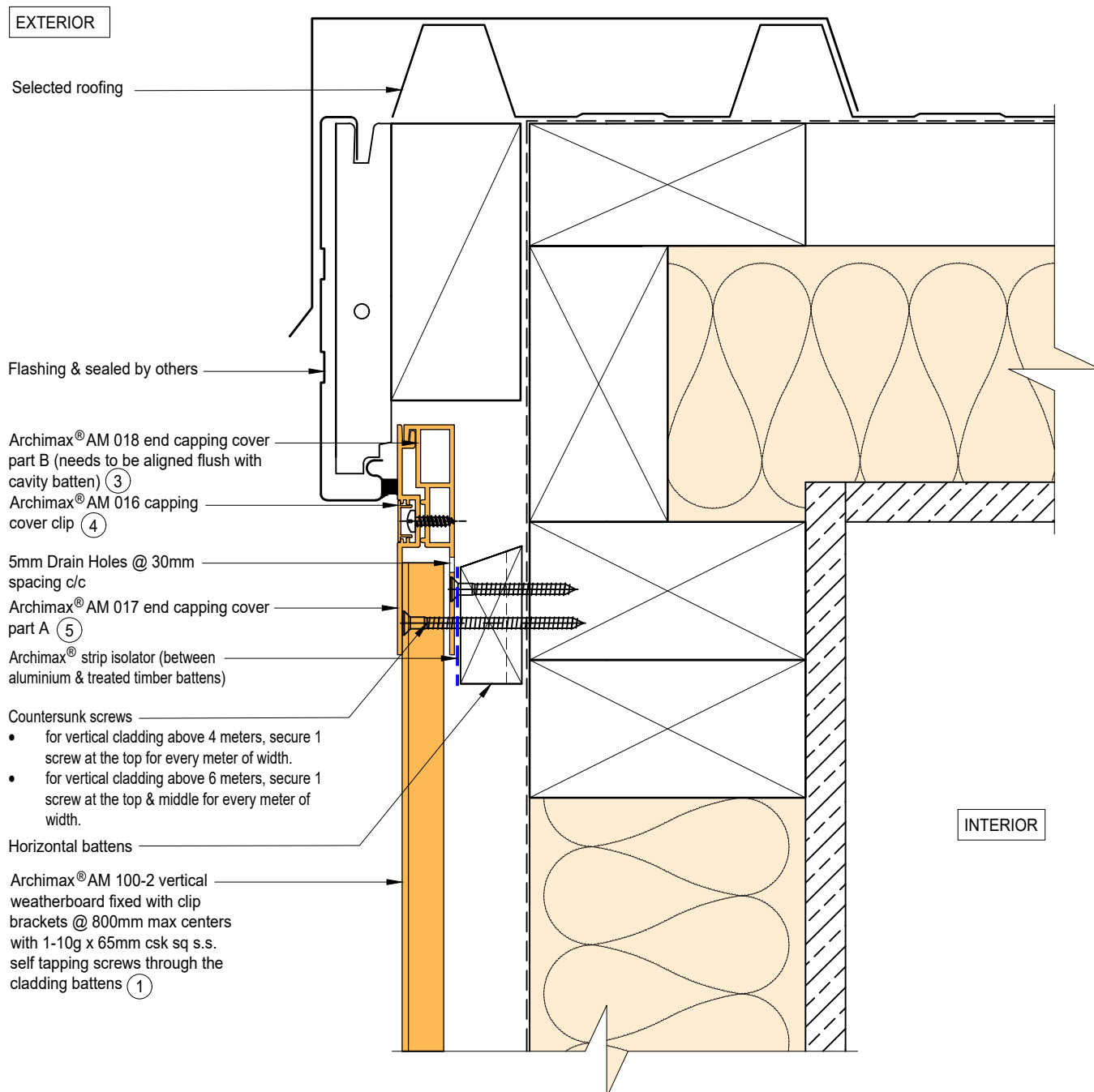
NOTE:

1. Stop ends to be installed at flashing ends.
2. Soffit requires direct fixing without brackets.



NOTE:
STOP ENDS TO BE INSTALLED AT FLASHING ENDS

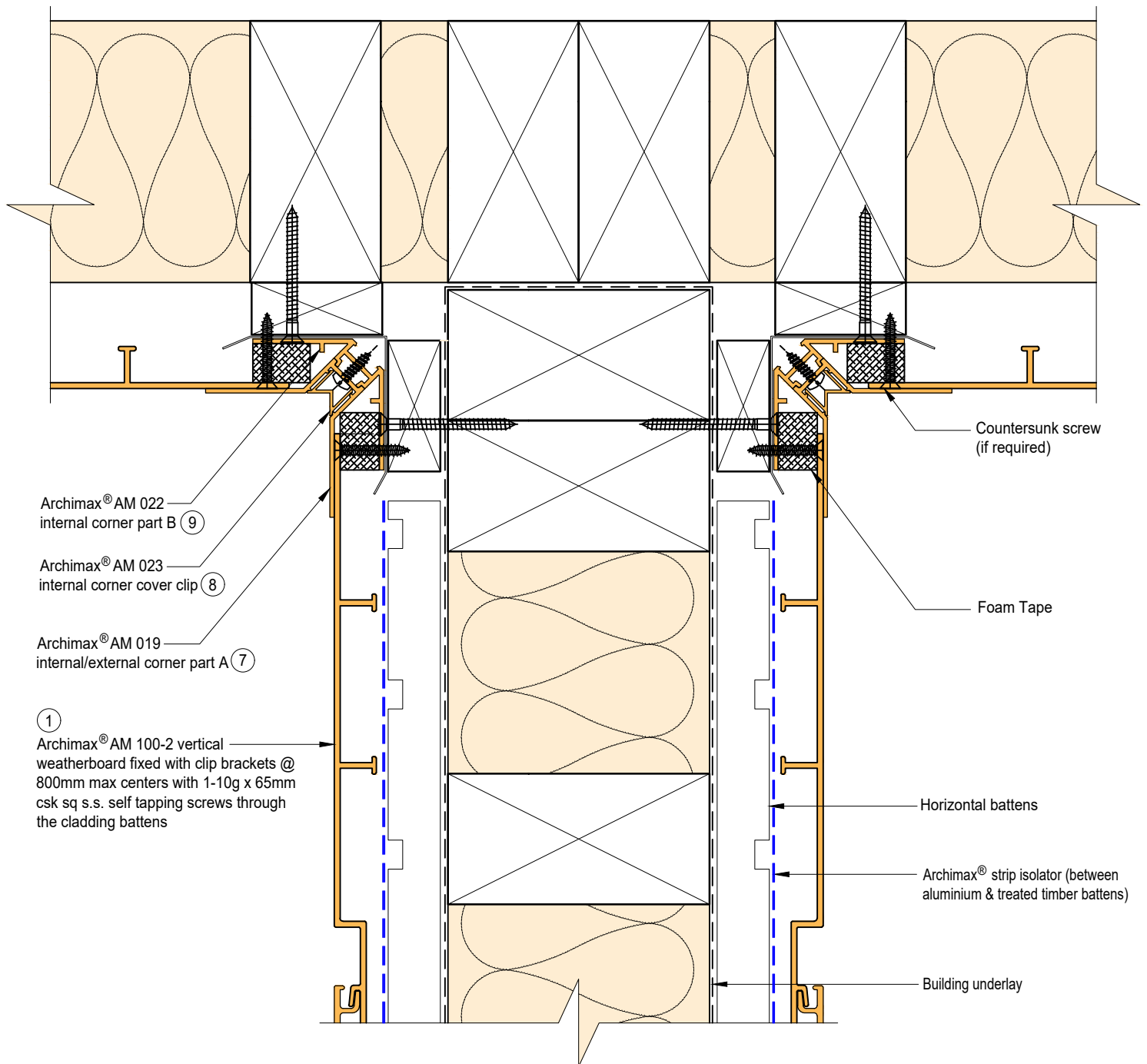


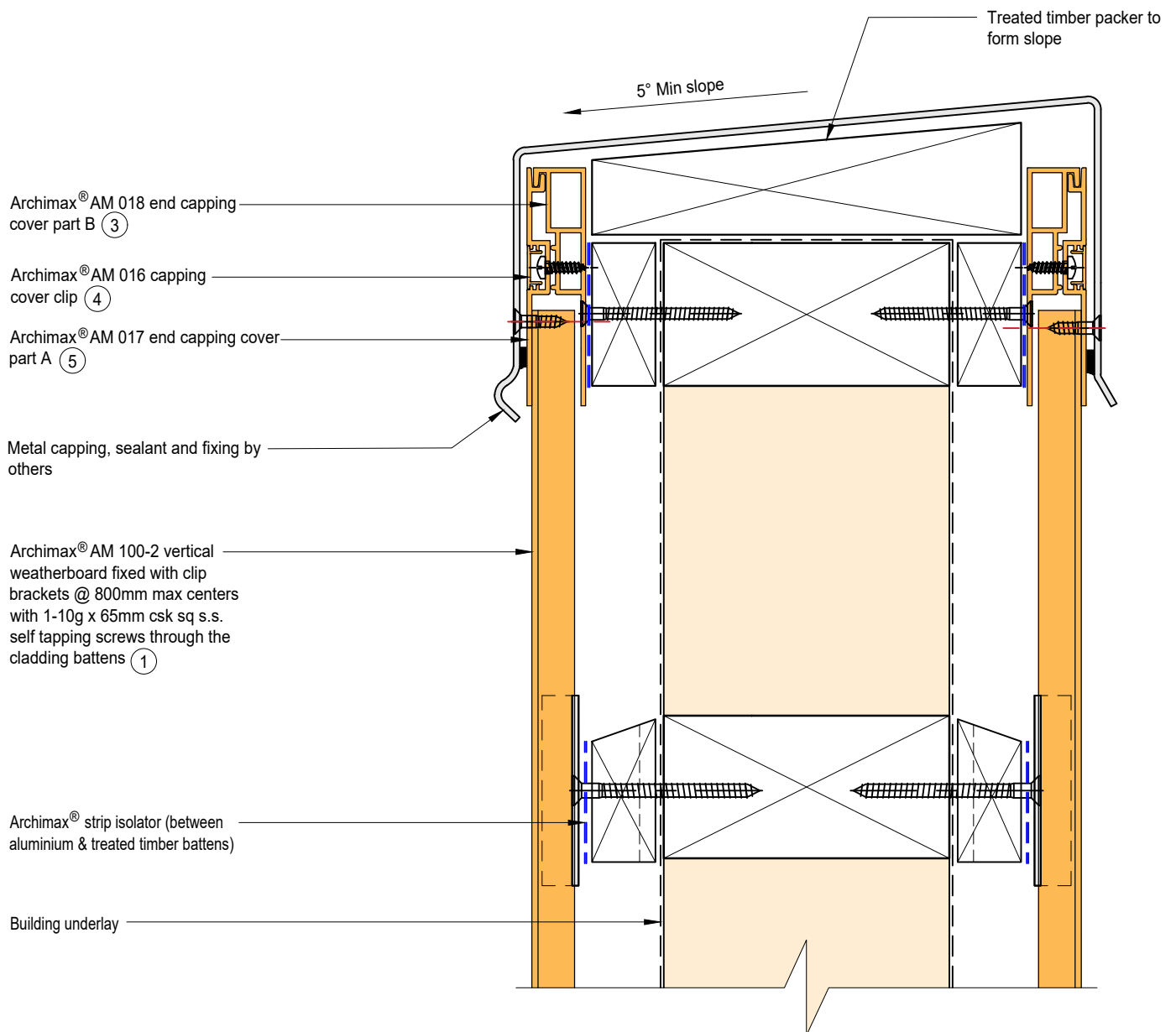


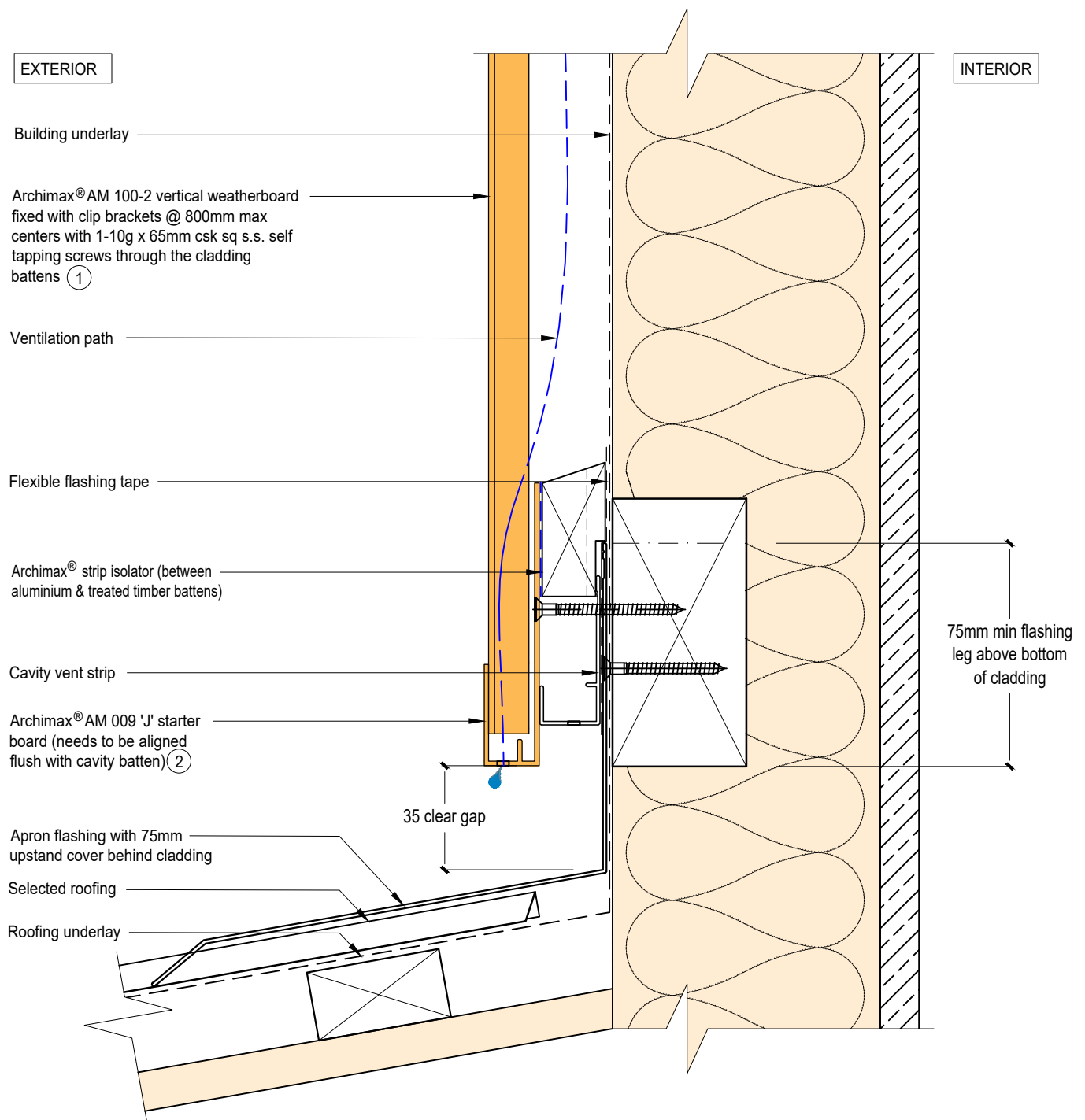
NOTE:

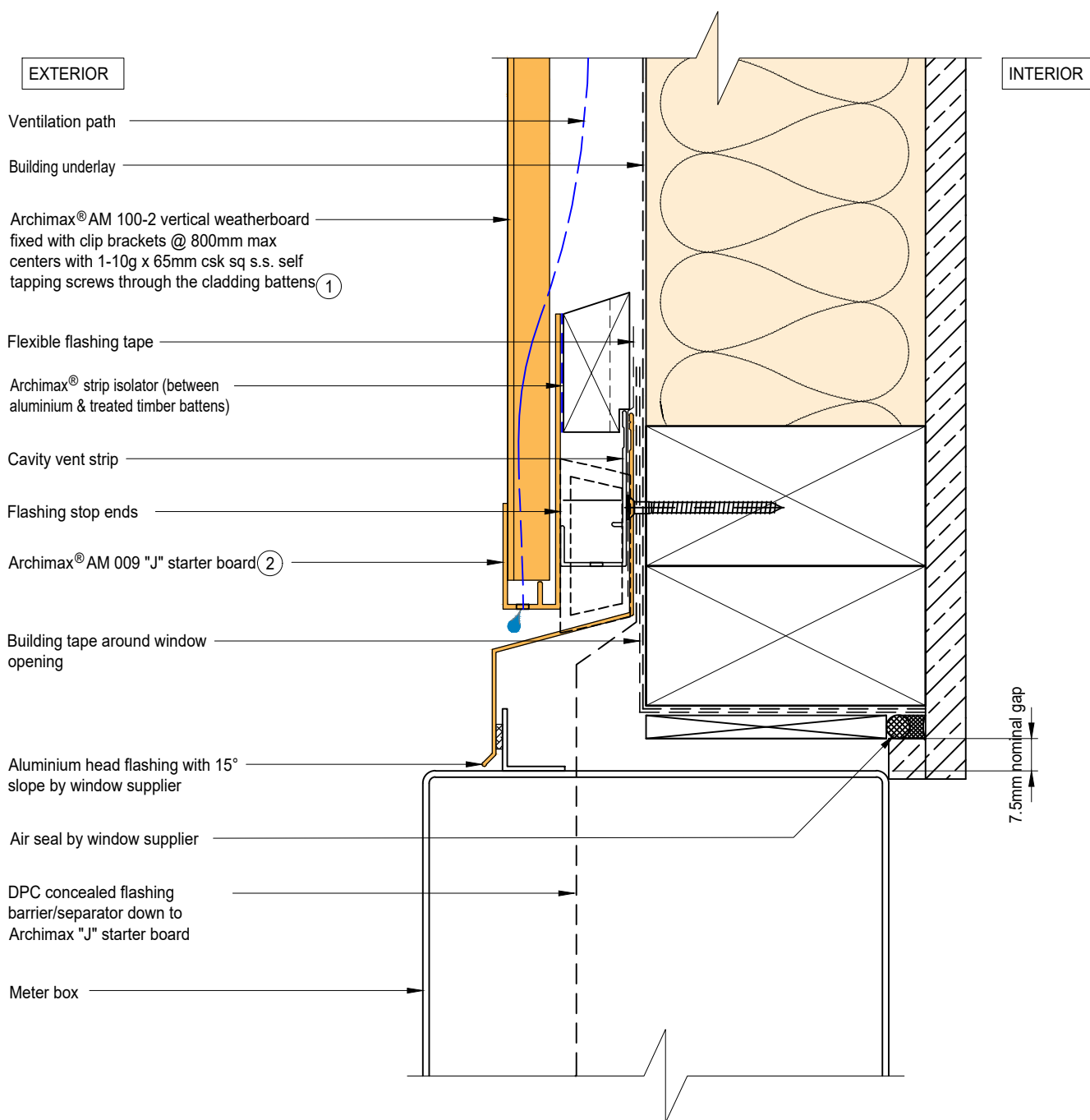
1. For vertical cladding more than 4 meters, secure 1 screw at the top for every meter of width. If it exceeds 6 meters, fix at both top and middle with one screw each.





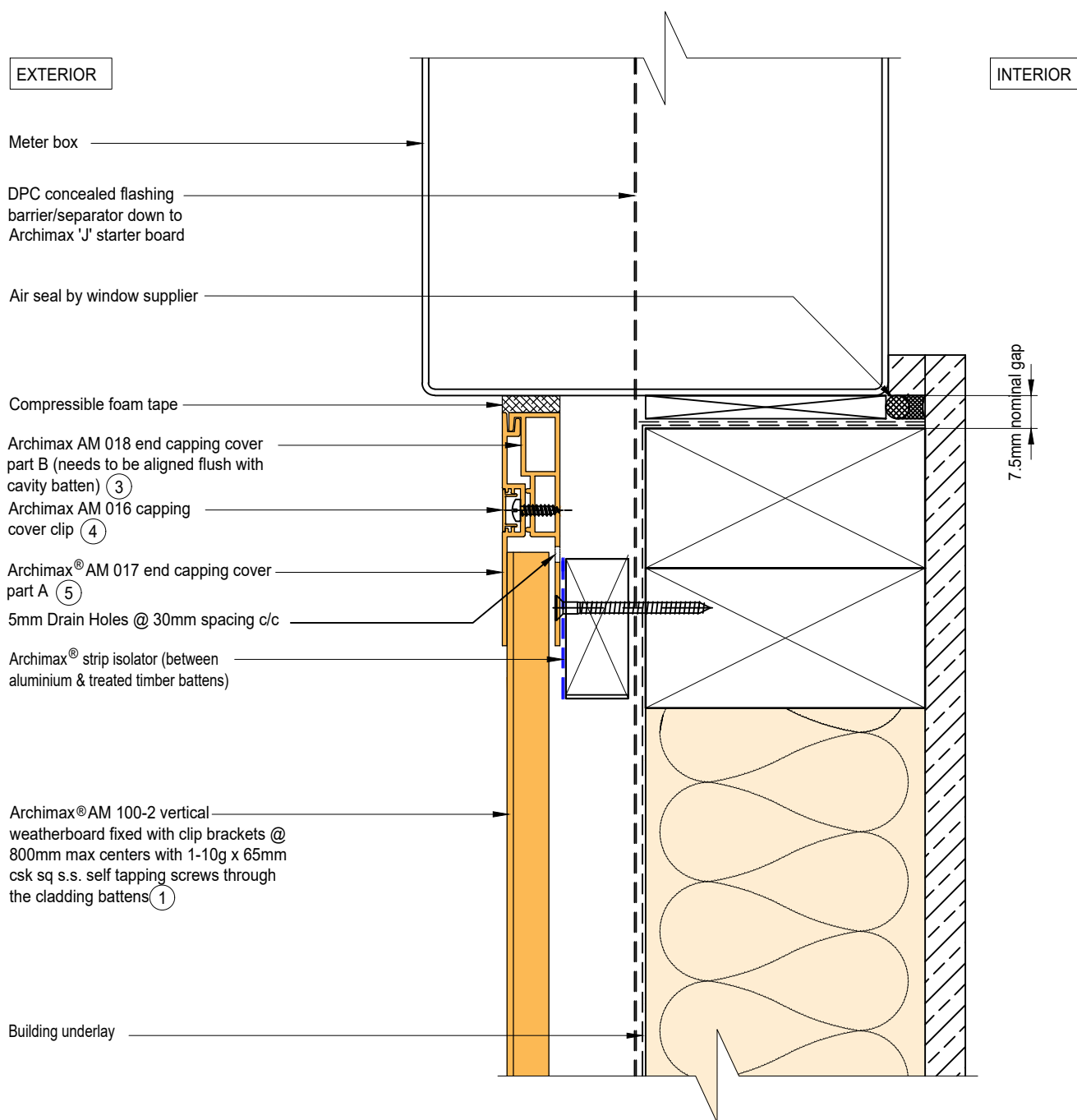


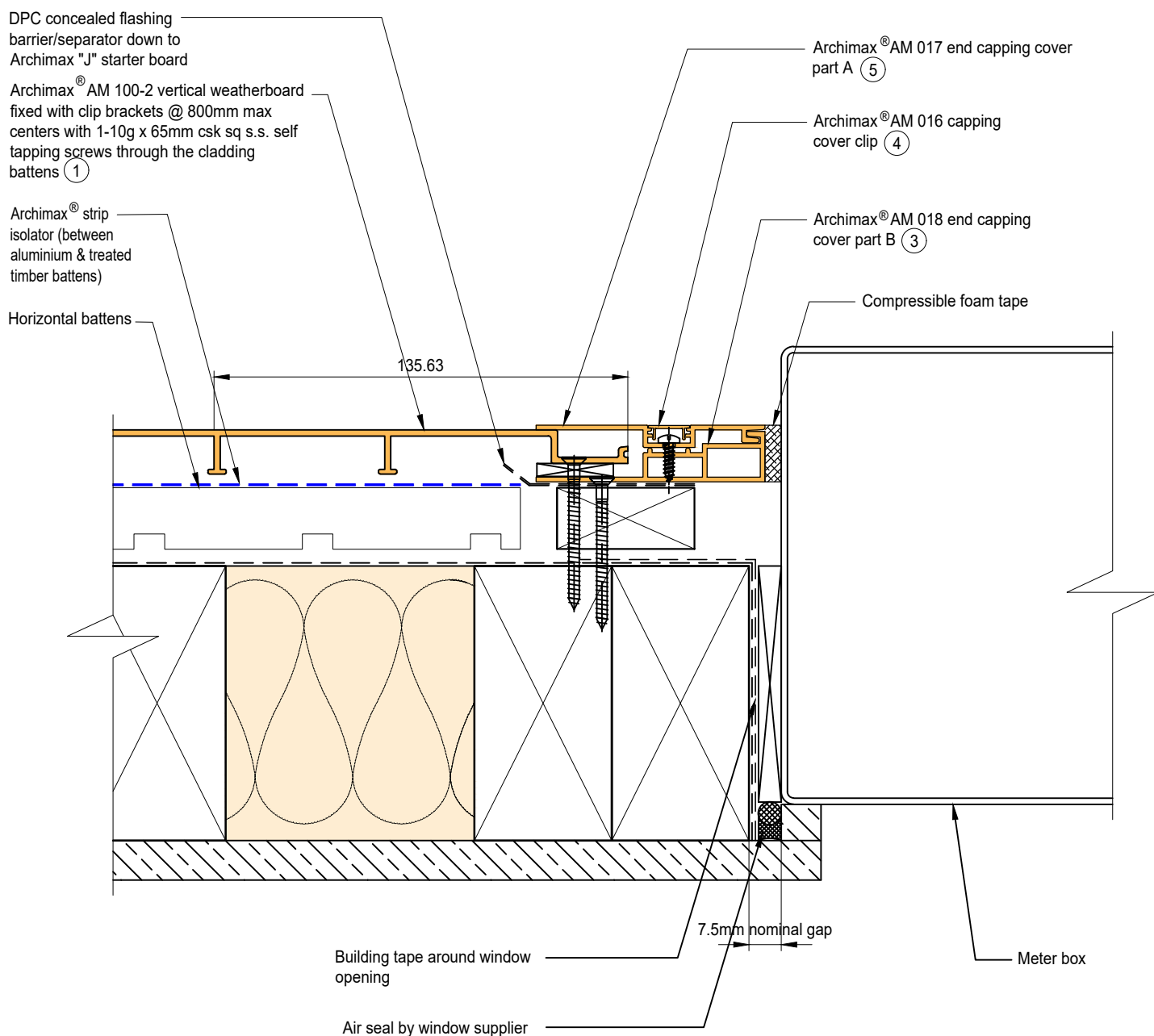


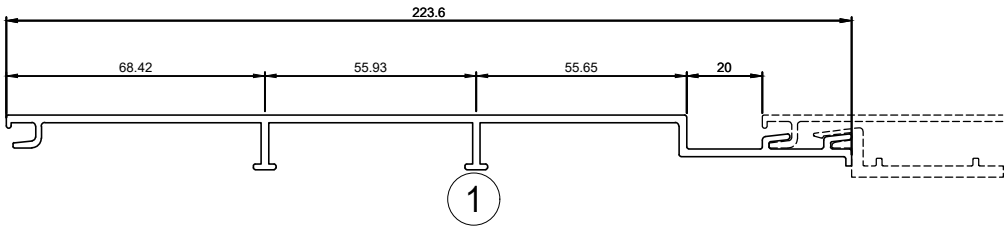
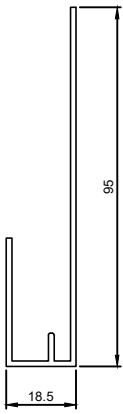
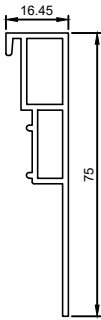
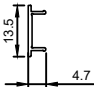
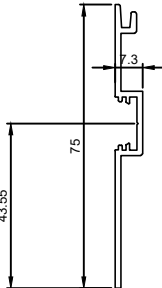

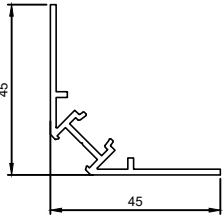
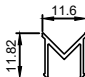
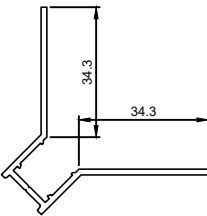
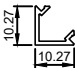


NOTE:
STOP ENDS TO BE INSTALLED AT FLASHING ENDS







				
AM 100-2 Archimax Horizontal/Vertical Weatherboard				
				
AM 009	AM 018	AM 016	AM 017	AM 050
"J" Starter Board	End capping part B	Jointer / Jamb / Sill capping cover clip	End Capping part A	Clip Bracket
				
AM 019	AM 023	AM 022	AM 020	
Internal/External corner part A	Internal Corner cover clip	Internal Corner part B	External Corner cover clip	