



ARCHIMAX

ALUMINIUM CLADDING SYSTEM

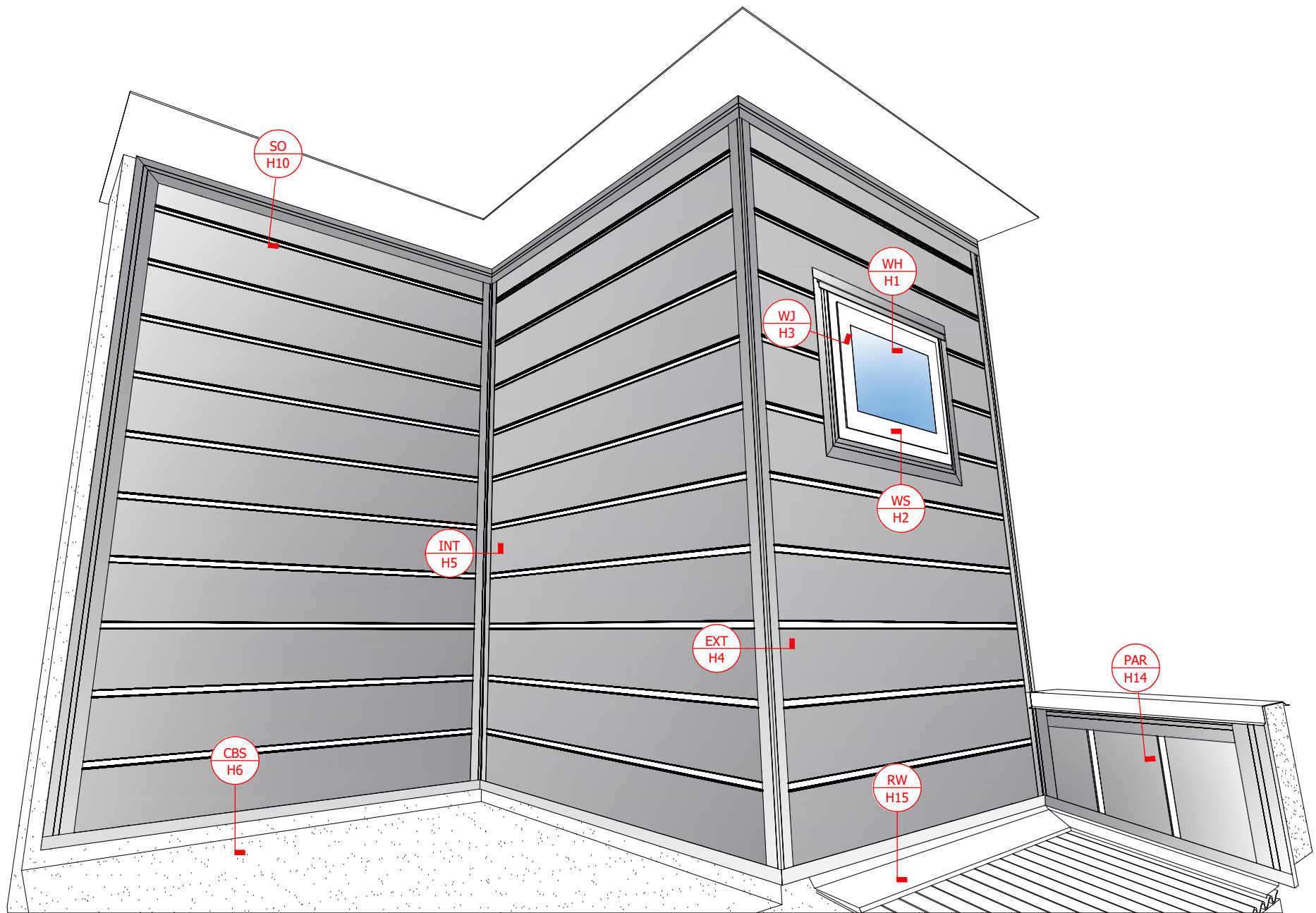
Creating more durable building envelopes

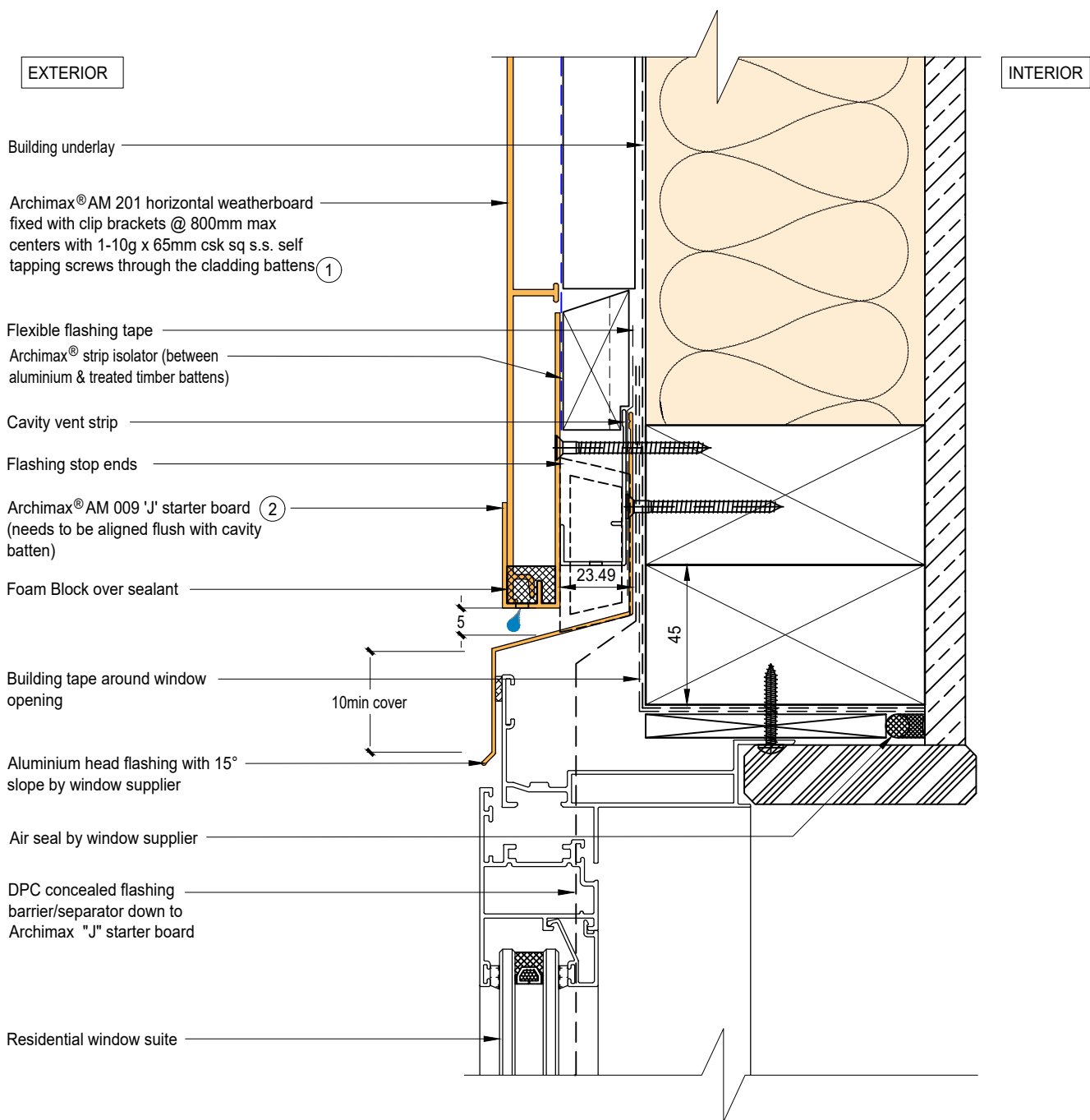
Archimax® Aluminium Cladding System AM201 Horizontal Profile – Installation details

Drawing No.	Rev.	Description
AM-WH-H1	E	Archimax® Window Head Detail
AM-WS-H2	E	Archimax® Window Sill Detail
AM-WJ-H3	E	Archimax® Window Jamb Detail
AM-EXT-H4	E	Archimax® External Corner Detail
AM-INT-H5	E	Archimax® Internal Corner Detail
AM-CBS-H6.1	E	Archimax® Concrete Floor Board Starter Detail - Timber
AM-CBS-H6.2	E	Archimax® Concrete Floor Board Starter Detail - Fire Wall
AM-HJ-H7	E	Archimax® Horizontal Joint Detail
AM-DJ-H8	E	Archimax® Deck Junction Detail
AM-PP-H9a	E	Archimax® Pipe Penetration - Plan View Detail
AM-PP-H9b	E	Archimax® Pipe Penetration - Section View Detail
AM-SO-H10	E	Archimax® Soffit Detail
AM-SO-H11.1	E	Archimax® Fascia, Soffit & Wall Detail
AM-SO-H11.2	E	Archimax® Fascia, Soffit & Wall (90° Soffit / Wall) Detail
AM-SO-H11.3	E	Archimax® Fascia, Board Soffit & Wall Detail
AM-NSO-H12	E	Archimax® Non - Soffit Detail
AM-BJ-H13	E	Archimax® Internal Corner Junction Detail
AM-PAR-H14	E	Archimax® Parapet with Cavity Detail
AM-RW-H15	E	Archimax® Lower Roof Wall Junction Detail
AM-MB-H16	E	Archimax® Meter Box Head Detail
AM-MB-H17	E	Archimax® Meter Box Sill Detail
AM-MB-H18	E	Archimax® Meter Box Jamb Detail
AM-VJ-H19	E	Archimax® Vertical Joint Detail



AM201
coverage: 200mm




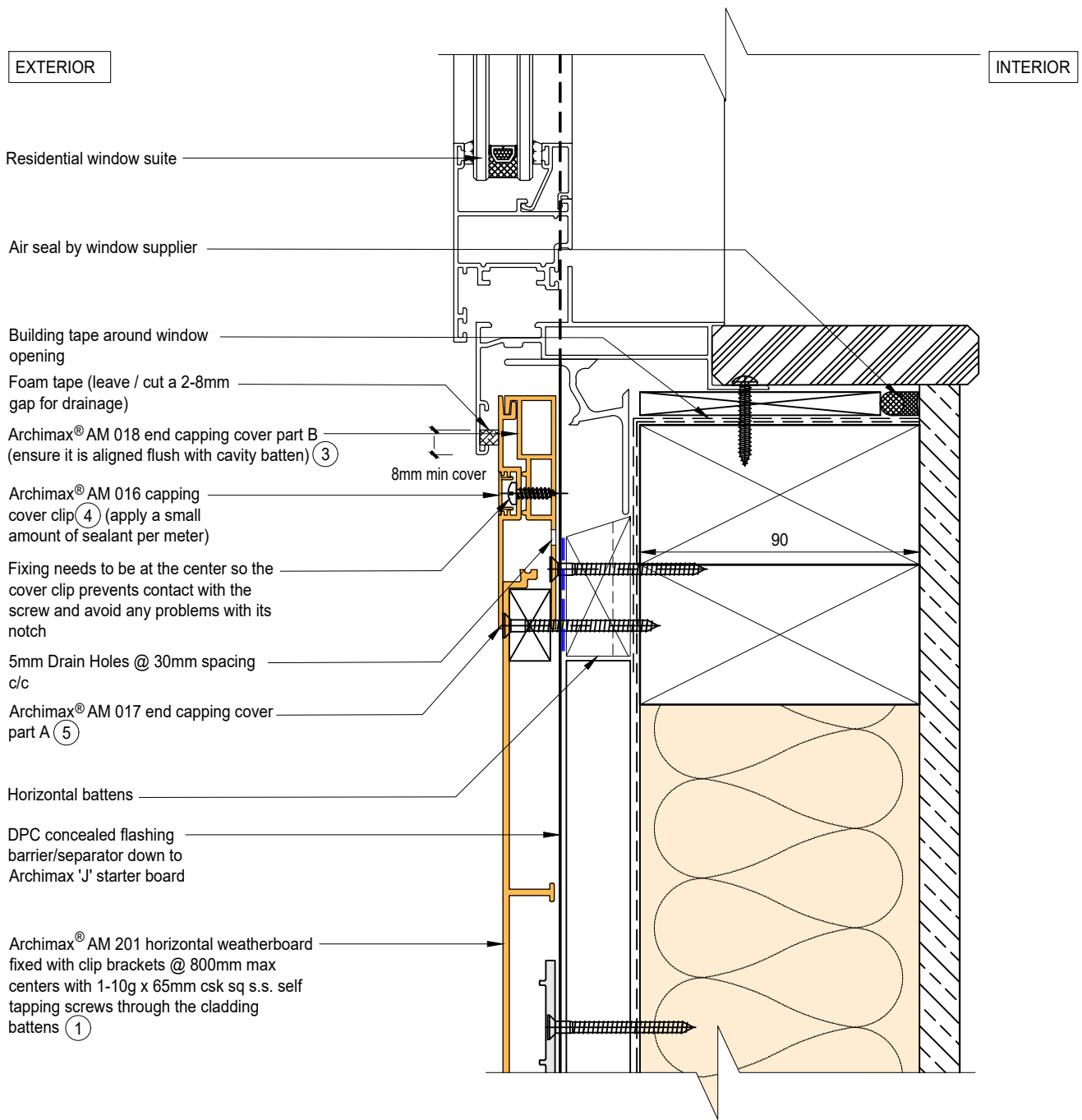


NOTE:

1. Stop ends to be installed at flashing ends.
2. Minimum Clearance between the AIR BARRIER and WINDOW JOINERY to be 45mm. Window Joinery should not be permanently fixed until cladding installed.
3. Sealant on each ends of the "J" starter board to prevent water going into cavity.
4. Timber Cavity Batten at 800mm max spacing.
5. Secure the AM029 clip with 1 screw for standard use, or 2 screws for added support




 <p>ARCHIMAX ALUMINIUM CLADDING SYSTEM Creating more durable building envelopes www.archimax.co.nz</p>	<p>System AM 201 - HORIZONTAL WEATHERBOARD</p>	<p>Detail ARCHIMAX® WINDOW HEAD DETAIL</p>	<p>Drawing No. Rev. AM-WH-H1 E</p>
	<p>This drawing is the copyright of Archimax Limited. Modification of details for job specification requirements must be approved by Archimax Ltd. The building designer is ultimately responsible to ensure all building work is designed and constructed according to building code requirements, best code of practice industry guidelines. All components must be supplied by Archimax. Archimax reserves the right to alter or upgrade details at any time without prior notice.</p>		<p>Scale Date 1:2 NOV24</p>



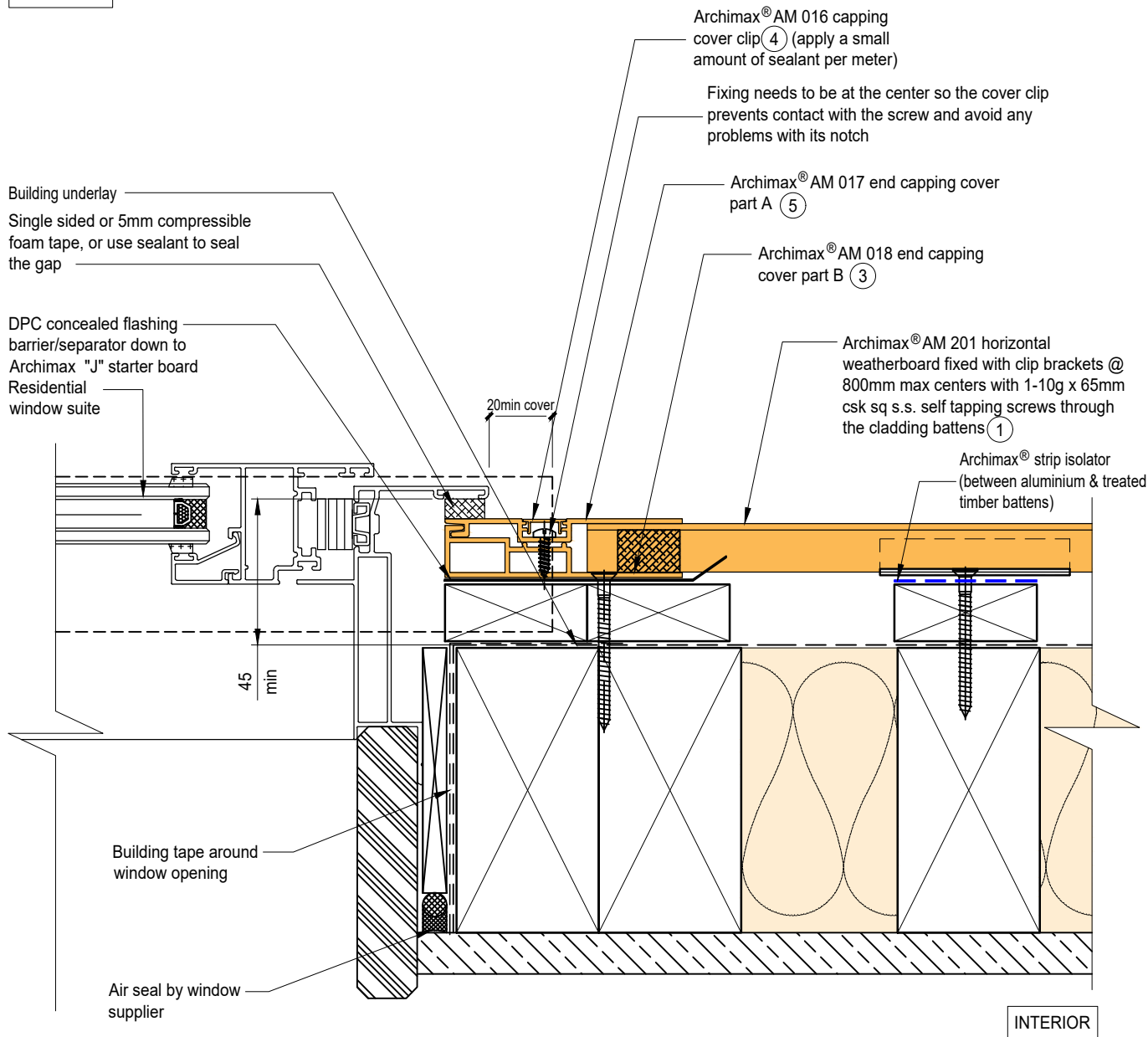
NOTE:

1. Minimum Clearance between the AIR BARRIER and WINDOW JOINERY to be 45mm. Window Joinery should not be permanently fixed until cladding installed.
2. Apply a small amount of sealant to every meter of the AM016 cover clip. Report to Archimax if AM016 cover clips are loose or tight. Do not force to install.
3. Timber Cavity Batten at 800mm max spacing.
4. Secure the AM029 clip with 1 screw for standard use, or 2 screws for added support



 <p>ARCHIMAX ALUMINIUM CLADDING SYSTEM <i>Creating more durable building envelopes</i> www.archimax.co.nz</p>	<p>System AM 201 - HORIZONTAL WEATHERBOARD</p>	<p>Detail ARCHIMAX® WINDOW SILL DETAIL</p>	<p>Drawing No. Rev. AM-WS-H2 E</p>
	<p>This drawing is the copyright of Archimax Limited. Modification of details for job specification requirements must be approved by Archimax Ltd. The building designer is ultimately responsible to ensure all building work is designed and constructed according to building code requirements, best code of practice industry guidelines. All components must be supplied by Archimax. Archimax reserves the right to alter or upgrade details at any time without prior notice.</p>		<p>Scale Date 1:2 NOV24</p>


EXTERIOR

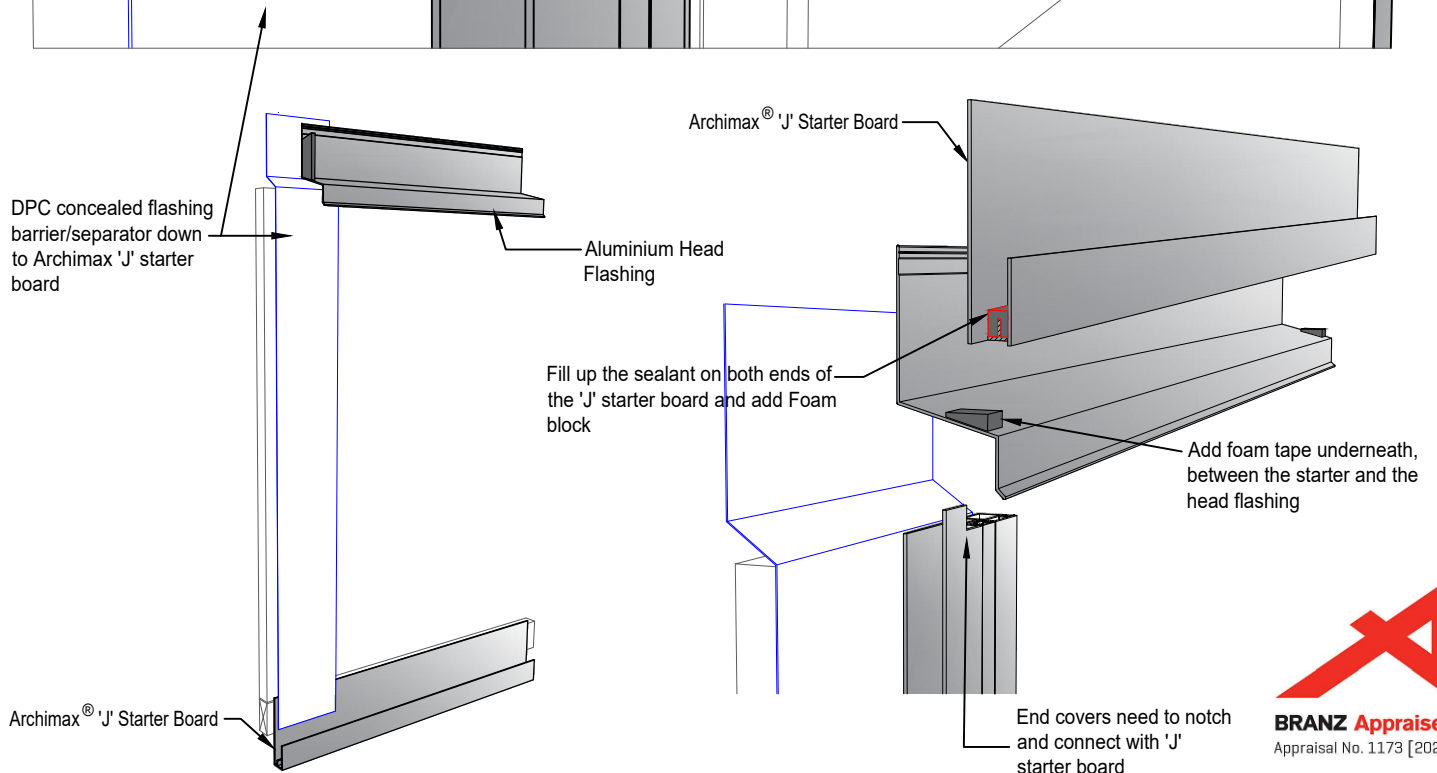
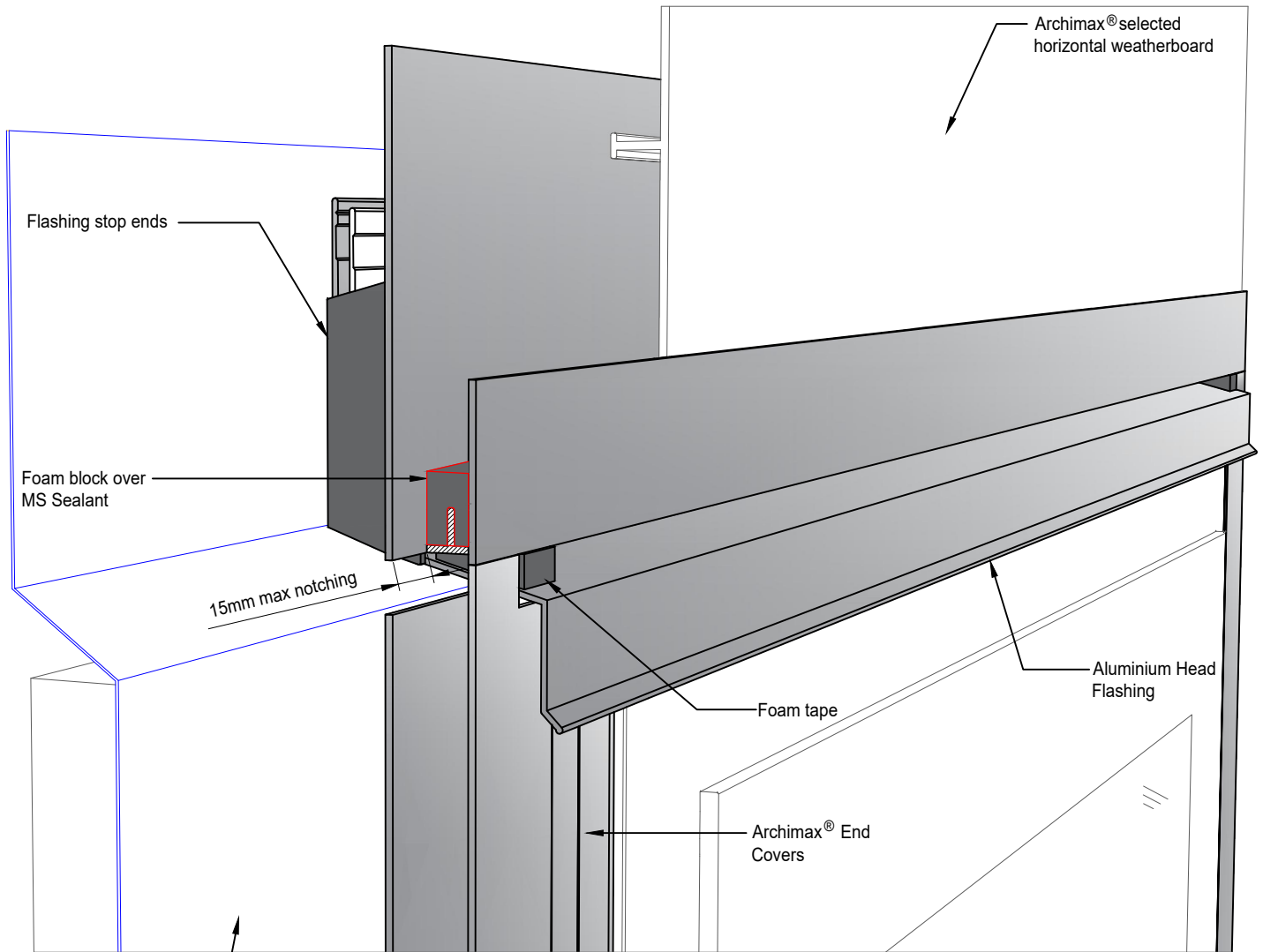



NOTE:

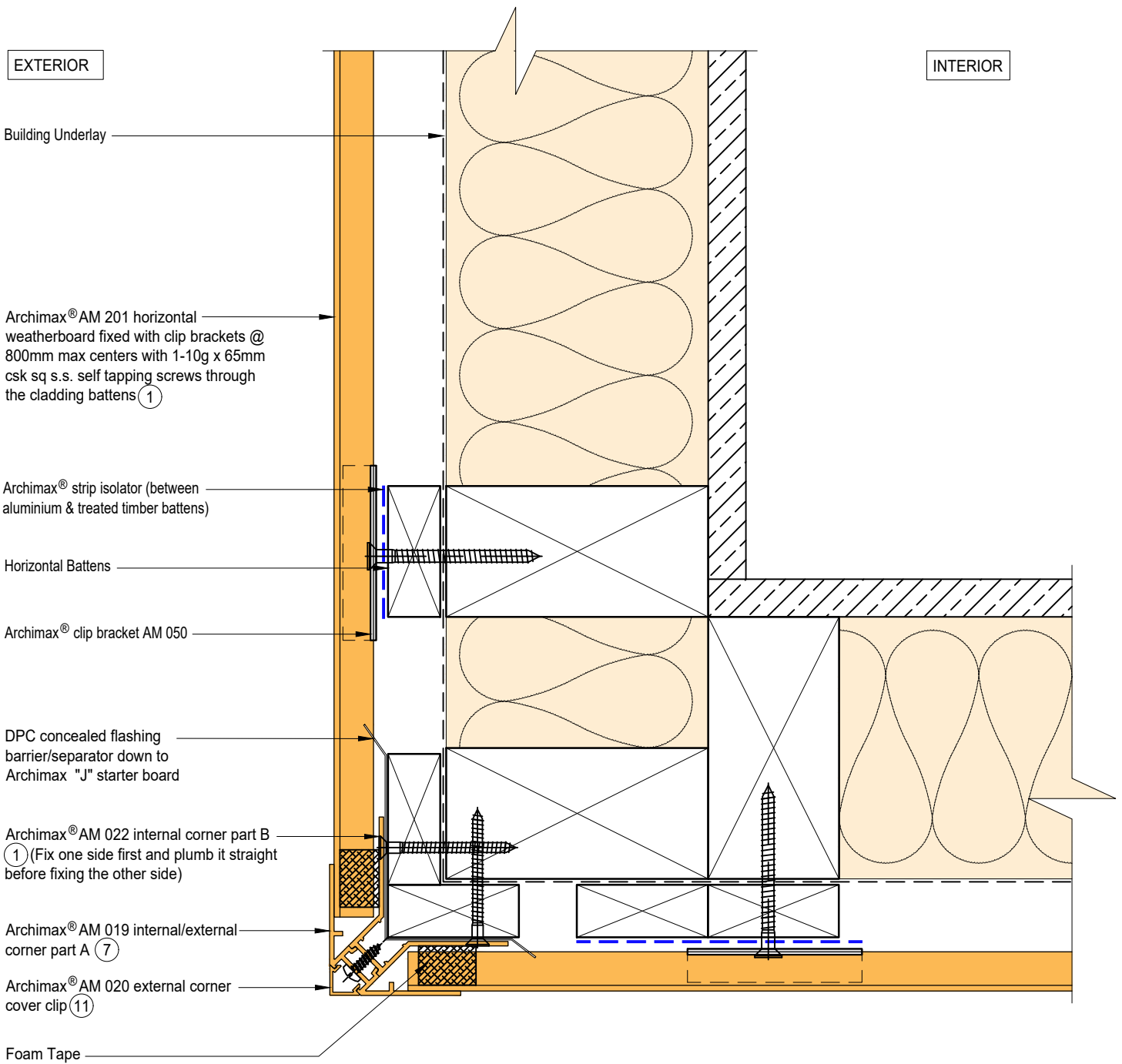
1. Minimum Clearance between the AIR BARRIER and WINDOW JOINERY to be 45mm. Window Joinery should not be permanently fixed until cladding installed.
2. Ideally, use 5mm compressible foam tape, or use sealant to seal the gap between window frame and Archimax cladding depending on the site situation.
3. Apply a small amount of sealant to every meter of the AM016 cover clip. Report to Archimax if AM016 cover clips are loose or tight. Do not force to install.
4. Timber Cavity Batten at 800mm max spacing.
5. Secure the AM029 clip with 1 screw for standard use, or 2 screws for added support



	System AM 201 - HORIZONTAL WEATHERBOARD	Detail ARCHIMAX® WINDOW JAMB DETAIL	Drawing No. AM-WJ-H3 Rev. E
	This drawing is the copyright of Archimax Limited. Modification of details for job specification requirements must be approved by Archimax Ltd. The building designer is ultimately responsible to ensure all building work is designed and constructed according to building code requirements, best code of practice industry guidelines. All components must be supplied by Archimax. Archimax reserves the right to alter or upgrade details at any time without prior notice.		Scale: 1:2 Date: NOV24




 <p>ARCHIMAX ALUMINIUM CLADDING SYSTEM <i>Creating more durable building envelopes</i> www.archimax.co.nz</p>	System ARCHIMAX®	Detail ARCHIMAX® WINDOW HEAD NOTCH & DPC BARRIER DETAILS	Drawing No. --	Rev. E
	<p>This drawing is the copyright of Archimax Limited. Modification of details for job specification requirements must be approved by Archimax Ltd. The building designer is ultimately responsible to ensure all building work is designed and constructed according to building code requirements, best code of practice industry guidelines. All components must be supplied by Archimax. Archimax reserves the right to alter or upgrade details at any time without prior notice.</p>		Scale NTS	Date NOV24

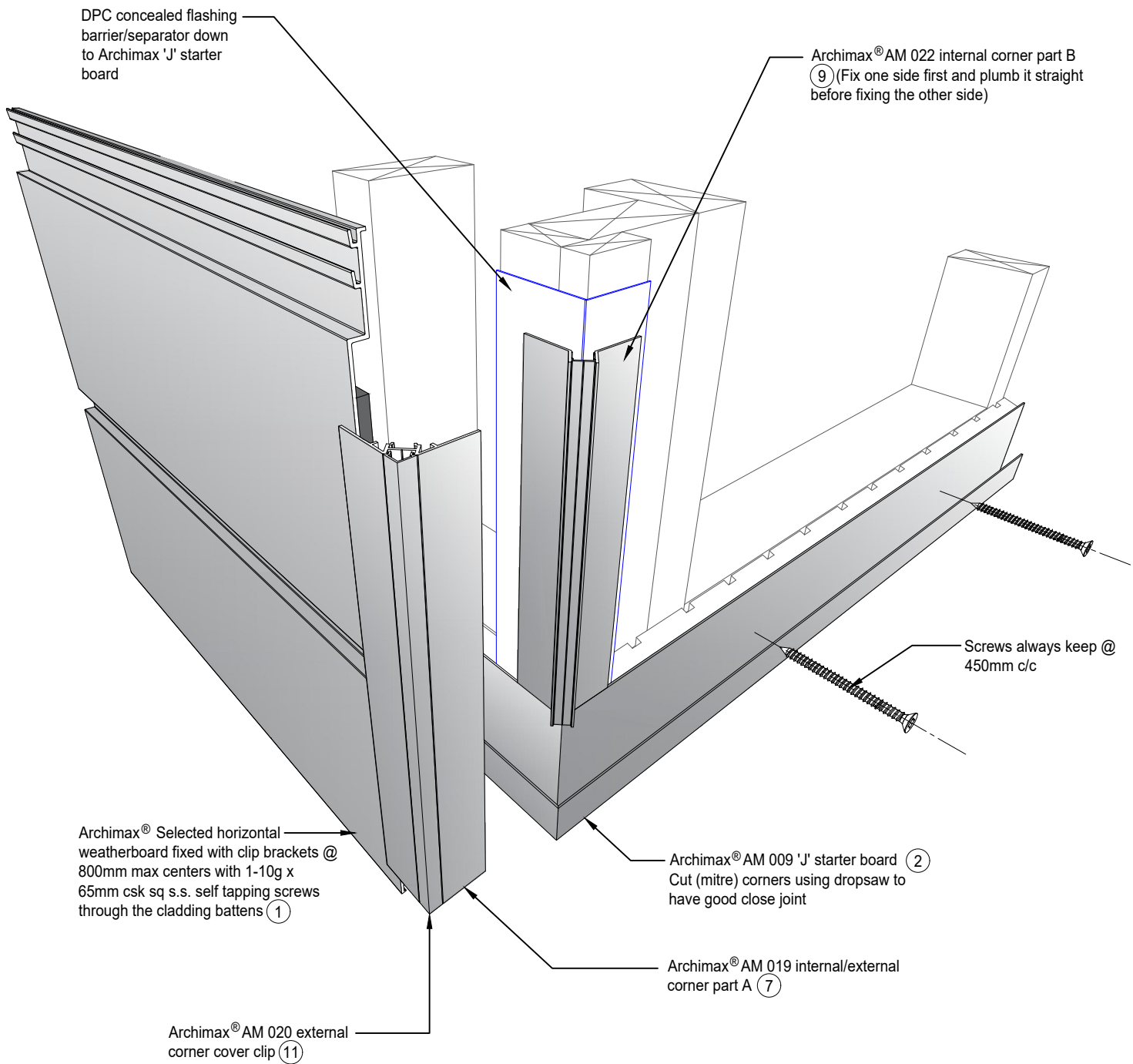



NOTE:

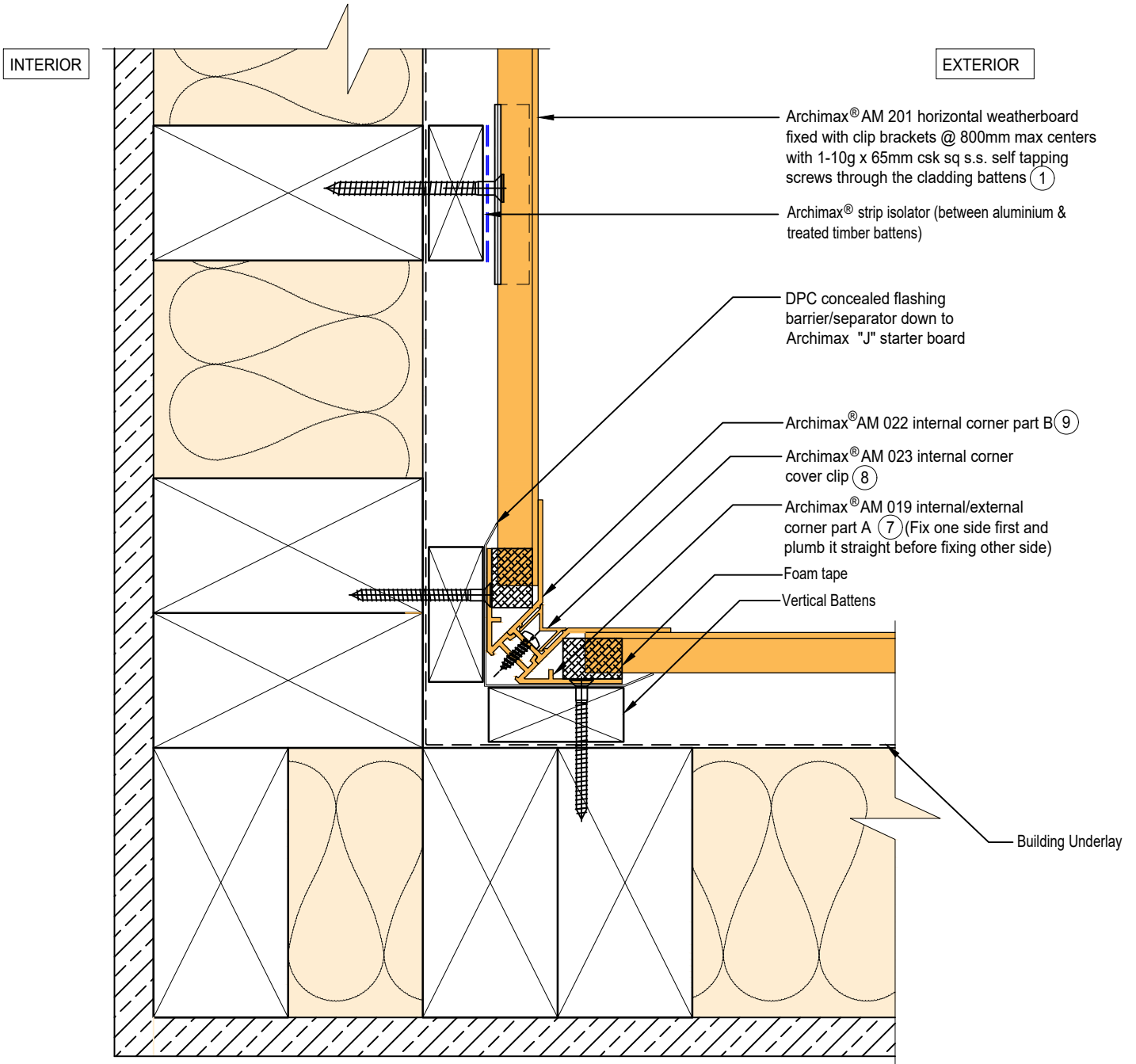
1. Fix the External Corner part B on one side first and plumb it straight before fixing the other side to avoid twisting.
2. Timber Cavity Batten at 800mm max spacing.
3. Secure the AM029 clip with 1 screw for standard use, or 2 screws for added support



 <p>ARCHIMAX ALUMINIUM CLADDING SYSTEM <i>Creating more durable building envelopes</i> www.archimax.co.nz</p>	<p>System AM 201 - HORIZONTAL WEATHERBOARD</p>	<p>Detail ARCHIMAX® EXTERNAL CORNER DETAIL</p>	<p>Drawing No. Rev. AM-EXT-H4 E</p>
	<p>This drawing is the copyright of Archimax Limited. Modification of details for job specification requirements must be approved by Archimax Ltd. The building designer is ultimately responsible to ensure all building work is designed and constructed according to building code requirements, best code of practice industry guidelines. All components must be supplied by Archimax. Archimax reserves the right to alter or upgrade details at any time without prior notice.</p>		<p>Scale Date 1:2 NOV24</p>




 <p>ARCHIMAX ALUMINIUM CLADDING SYSTEM <i>Creating more durable building envelopes</i> www.archimax.co.nz</p>	System ARCHIMAX®	Detail ARCHIMAX® HORIZONTAL ON CAVITY TYPICAL CORNER ASSEMBLY	Drawing No. --	Rev. E
	<p>This drawing is the copyright of Archimax Limited. Modification of details for job specification requirements must be approved by Archimax Ltd. The building designer is ultimately responsible to ensure all building work is designed and constructed according to building code requirements, best code of practice industry guidelines. All components must be supplied by Archimax. Archimax reserves the right to alter or upgrade details at any time without prior notice.</p>		Scale NTS	Date NOV24



NOTE:

1. Fix the AM 019 internal/external corner part A on one side first and plumb it straight before fixing the other side to avoid twisting.
2. Timber Cavity Batten at 800mm max spacing.
3. Secure the AM029 clip with 1 screw for standard use, or 2 screws for added support



 <p>ARCHIMAX ALUMINIUM CLADDING SYSTEM <i>Creating more durable building envelopes</i> www.archimax.co.nz</p>	<p>System AM 201 - HORIZONTAL WEATHERBOARD</p>	<p>Detail ARCHIMAX® INTERNAL CORNER DETAIL</p>	<p>Drawing No. Rev. AM-INT-H5 E</p>
	<p>This drawing is the copyright of Archimax Limited. Modification of details for job specification requirements must be approved by Archimax Ltd. The building designer is ultimately responsible to ensure all building work is designed and constructed according to building code requirements, best code of practice industry guidelines. All components must be supplied by Archimax. Archimax reserves the right to alter or upgrade details at any time without prior notice.</p>		<p>Scale Date 1:2 NOV24</p>

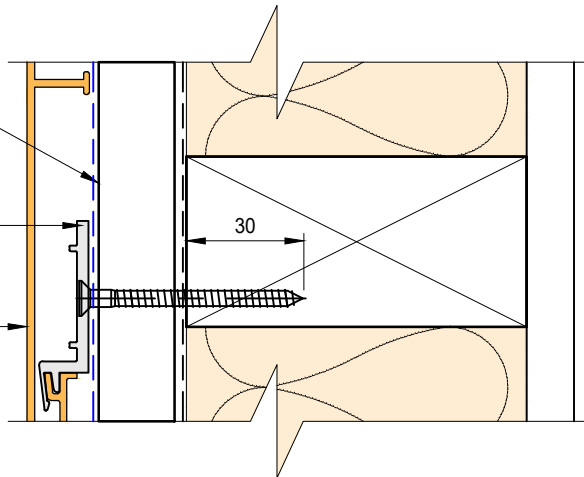
EXTERIOR

INTERIOR

Castellated timber batten (Vertical)

Archimax® clip bracket AM 050

① Archimax® AM 201 horizontal weatherboard fixed with clip brackets @ 800mm max centers with 1-10g x 65mm csk sq s.s. self tapping screws through the cladding battens



Building underlay

Ventilation path

Archimax® strip isolator (between aluminium & treated timber battens)

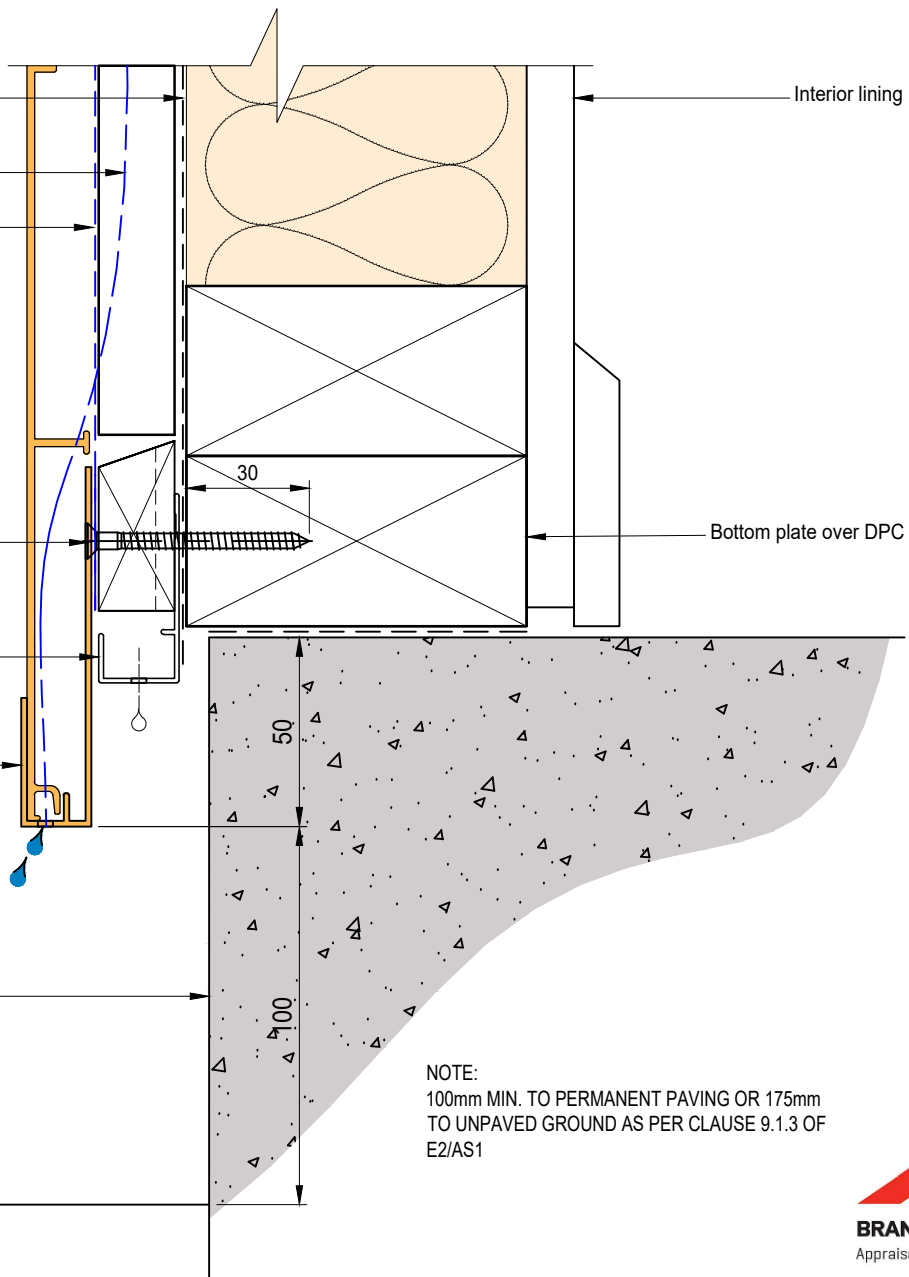
Starter Board screws always keep @ spacing of 450mm c/c

Cavity vent strip (By others)

② Archimax® AM 009 'J' starter board (needs to be aligned flush with cavity batten)

Concrete slab or brickwork (By others)

Finish ground level



NOTE:
100mm MIN. TO PERMANENT PAVING OR 175mm
TO UNPAVED GROUND AS PER CLAUSE 9.1.3 OF
E2/AS1



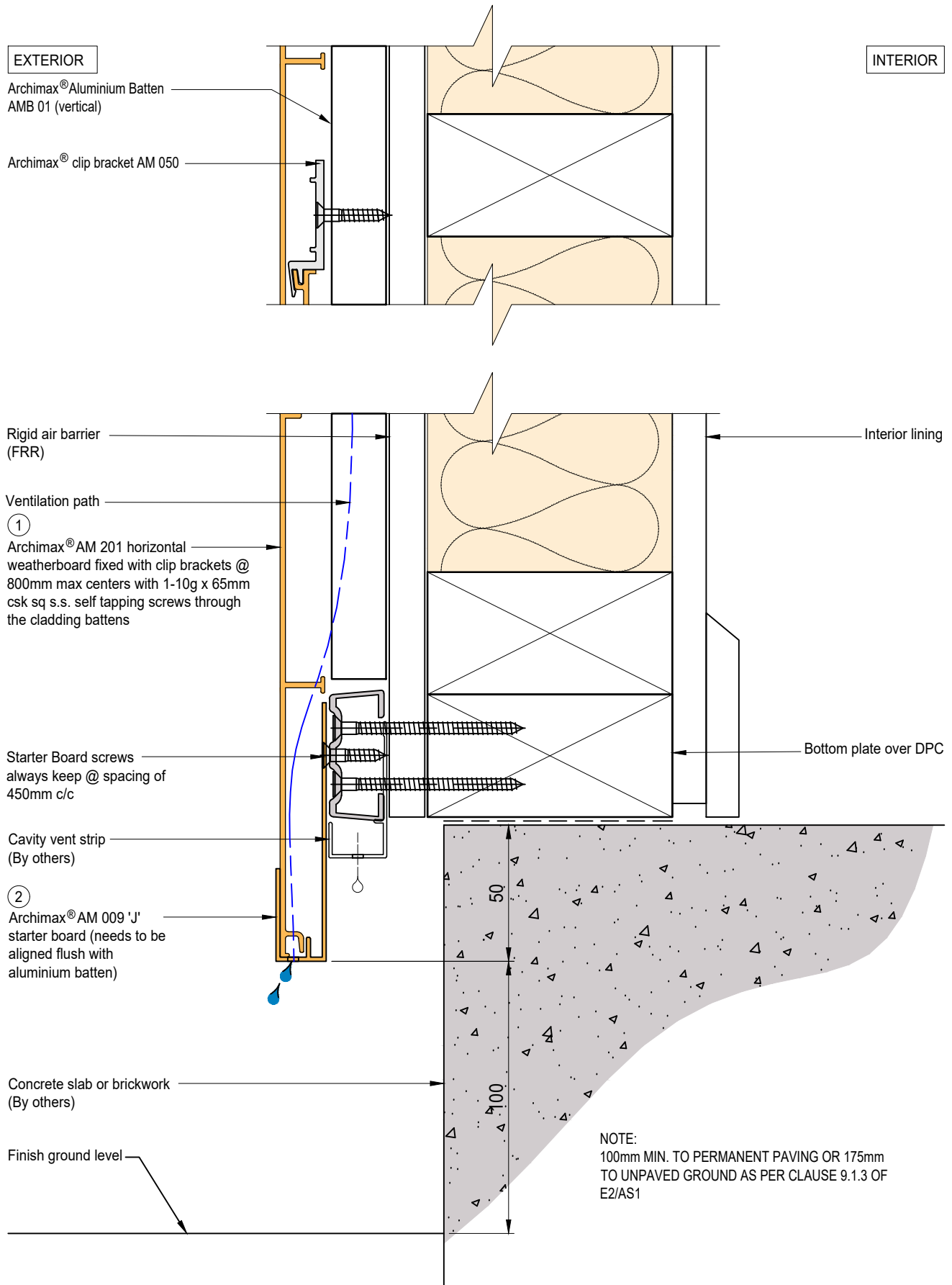
System
AM 201 - HORIZONTAL
WEATHERBOARD

Detail
ARCHIMAX® CONCRETE FLOOR "J"
STARTER BOARD DETAIL - TIMBER

Drawing No. Rev.
AM-CBS-H6.1 E

This drawing is the copyright of Archimax Limited. Modification of details for job specification requirements must be approved by Archimax Ltd. The building designer is ultimately responsible to ensure all building work is designed and constructed according to building code requirements, best code of practice industry guidelines. All components must be supplied by Archimax. Archimax reserves the right to alter or upgrade details at any time without prior notice.

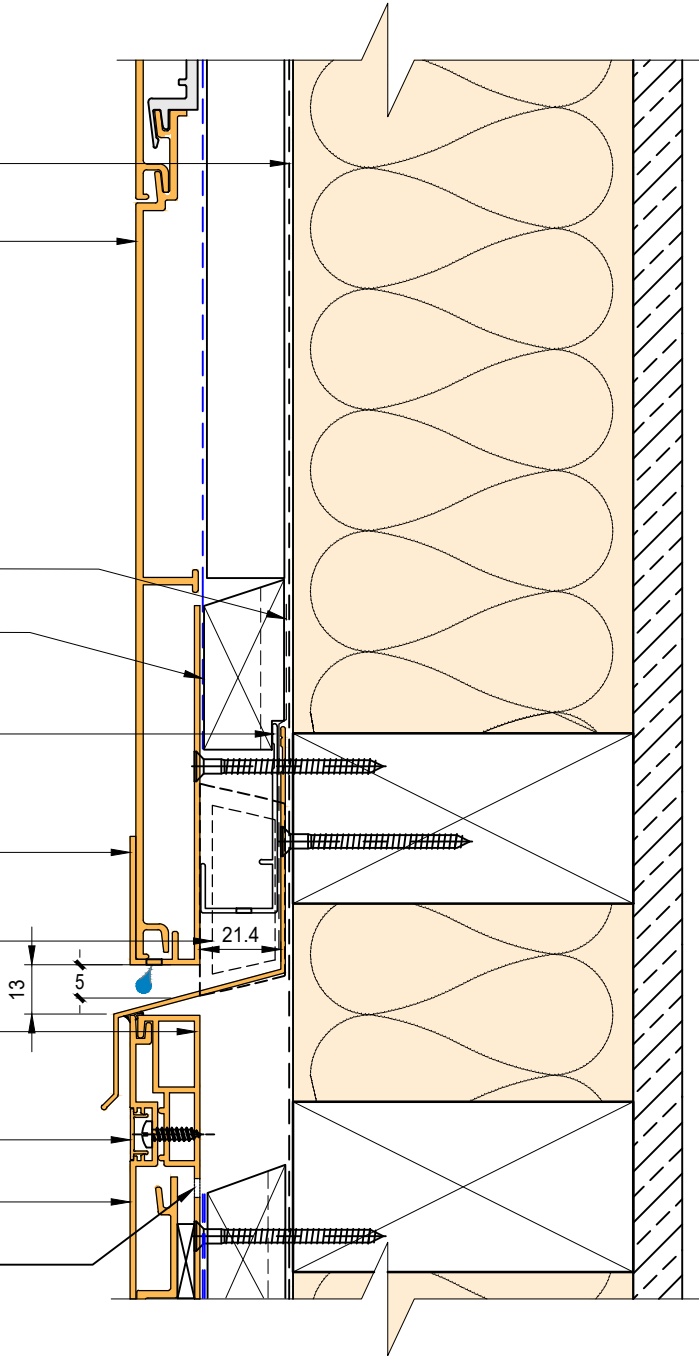
Scale Date
1:2 NOV24



EXTERIOR

INTERIOR

- Building underlay
- Archimax® AM 201 horizontal weatherboard fixed with clip brackets @ 800mm max centers with 1-10g x 65mm csk sq s.s. self tapping screws through the cladding battens ①
- Flexible flashing tape
- Archimax® strip isolator (between aluminium & treated timber battens)
- Cavity vent strip
- Archimax® AM 009 'J' starter board ② (needs to be aligned flush with cavity batten)
- Inter-Storey flashing stop ends
- Archimax® AM 018 end capping cover part B (ensure it is aligned flush with cavity batten) ③
- Archimax® AM 016 capping cover clip ④ (apply a small amount of sealant per meter)
- Archimax® AM 017 end capping cover part A ⑤
- 5mm Drain Holes @ 30mm spacing c/c

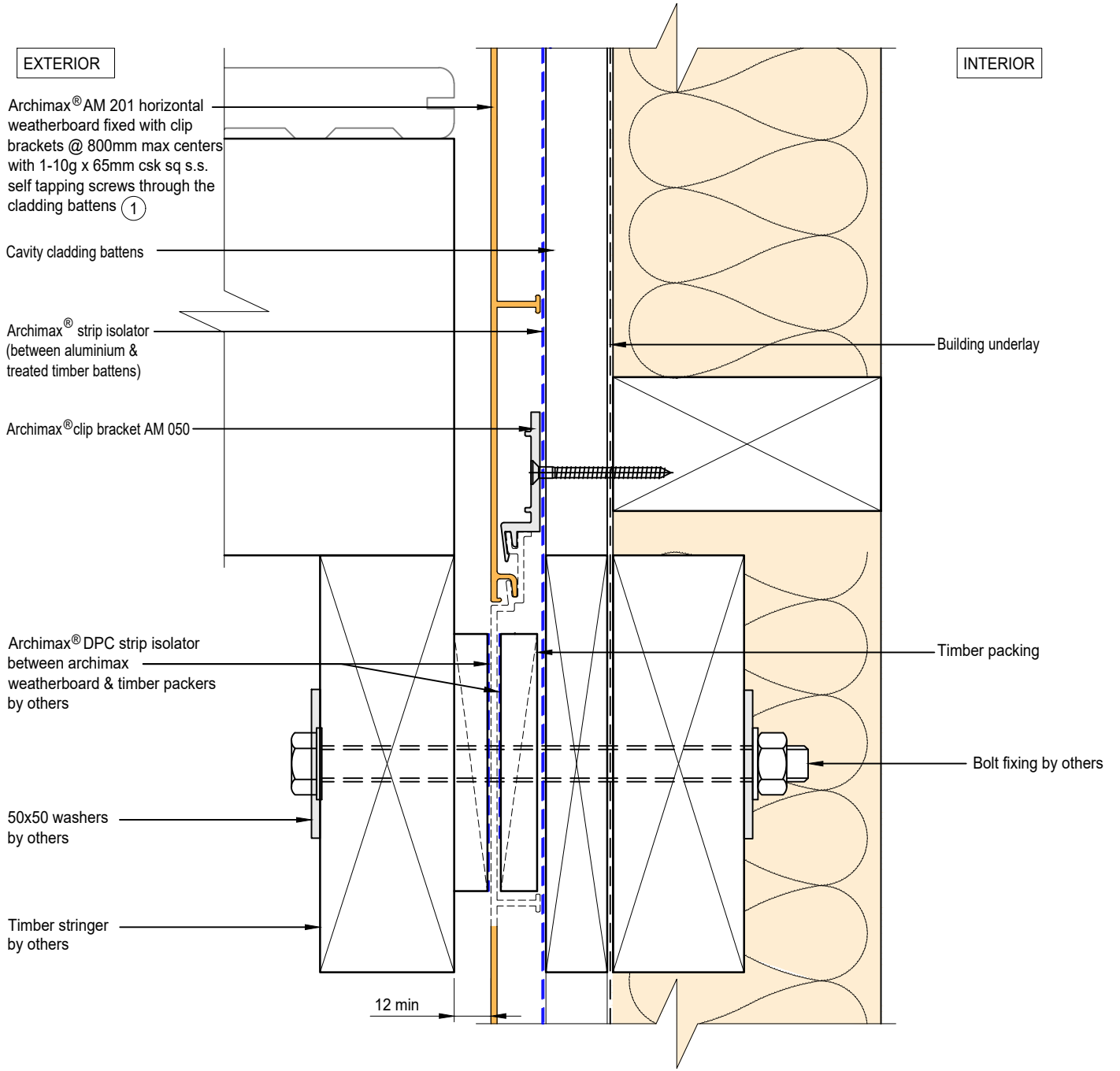



NOTE:
STOP ENDS TO BE INSTALLED AT INTER-STOREY FLASHING ENDS



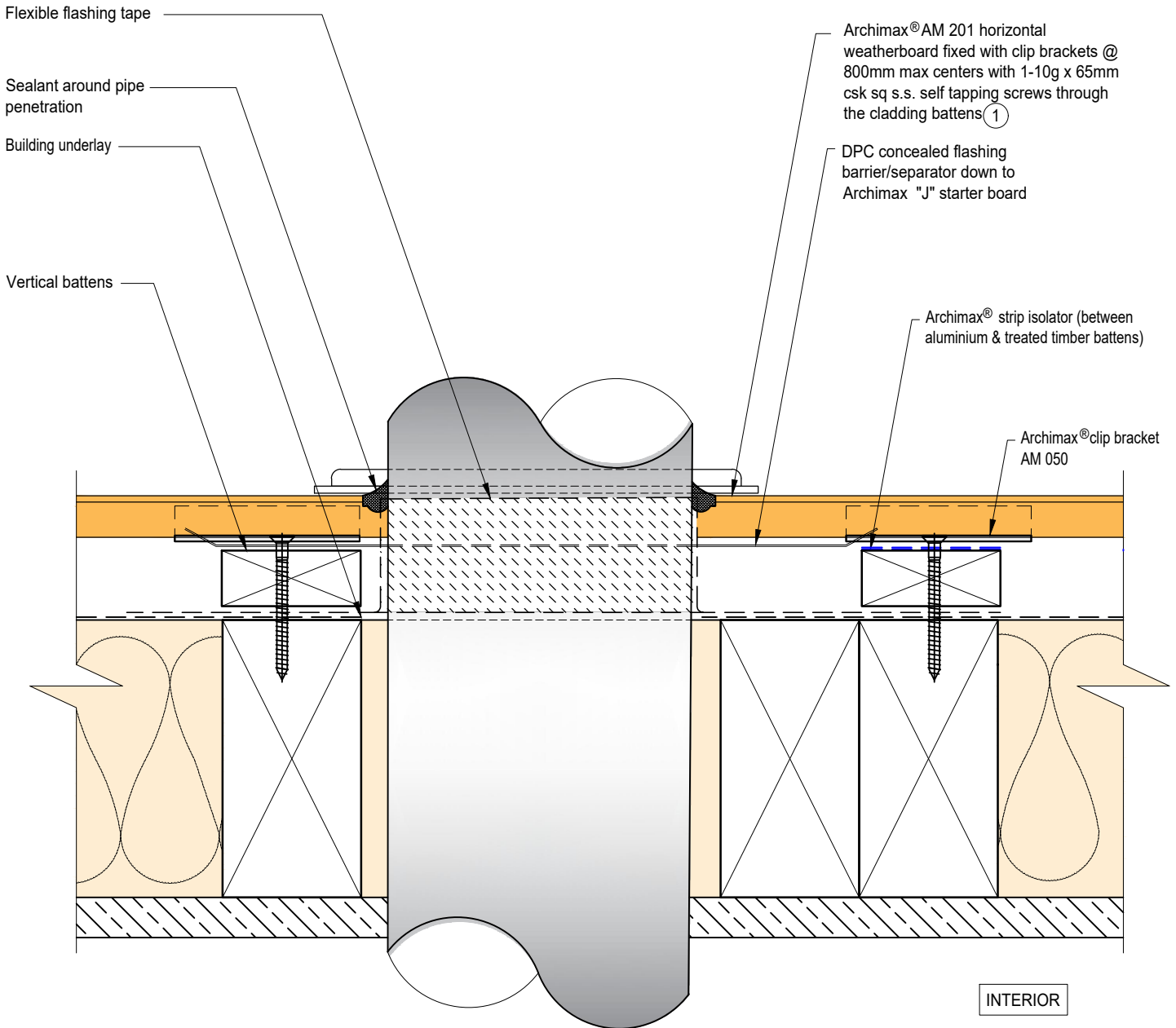
ARCHIMAX
ALUMINIUM CLADDING SYSTEM
Creating more durable building envelopes
www.archimax.co.nz

System AM 201 - HORIZONTAL WEATHERBOARD	Detail ARCHIMAX® HORIZONTAL JOINT DETAIL	Drawing No. AM-HJ-H7	Rev. E
This drawing is the copyright of Archimax Limited. Modification of details for job specification requirements must be approved by Archimax Ltd. The building designer is ultimately responsible to ensure all building work is designed and constructed according to building code requirements, best code of practice industry guidelines. All components must be supplied by Archimax. Archimax reserves the right to alter or upgrade details at any time without prior notice.		Scale 1:2	Date NOV24



 <p>ARCHIMAX ALUMINIUM CLADDING SYSTEM <i>Creating more durable building envelopes</i> www.archimax.co.nz</p>	<p>System AM 201 - HORIZONTAL WEATHERBOARD</p>	<p>Detail ARCHIMAX® DECK JUNCTION DETAIL</p>	<p>Drawing No. Rev. AM-DJ-H8 E</p>
	<p>This drawing is the copyright of Archimax Limited. Modification of details for job specification requirements must be approved by Archimax Ltd. The building designer is ultimately responsible to ensure all building work is designed and constructed according to building code requirements, best code of practice industry guidelines. All components must be supplied by Archimax. Archimax reserves the right to alter or upgrade details at any time without prior notice.</p>		<p>Scale Date 1:2 NOV24</p>

EXTERIOR



INTERIOR



BRANZ Appraised
Appraisal No. 1173 [2021]

EXTERIOR

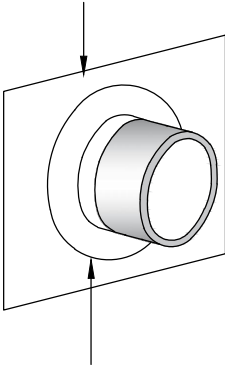
INTERIOR

Archimax® AM 201 horizontal weatherboard fixed with clip brackets @ 800mm max centers with 1-10g x 65mm csk sq s.s. self tapping screws through the cladding battens ①

Archimax® clip bracket AM 050

Vertical battens

DPC concealed flashing barrier/separator down to Archimax "J" starter board



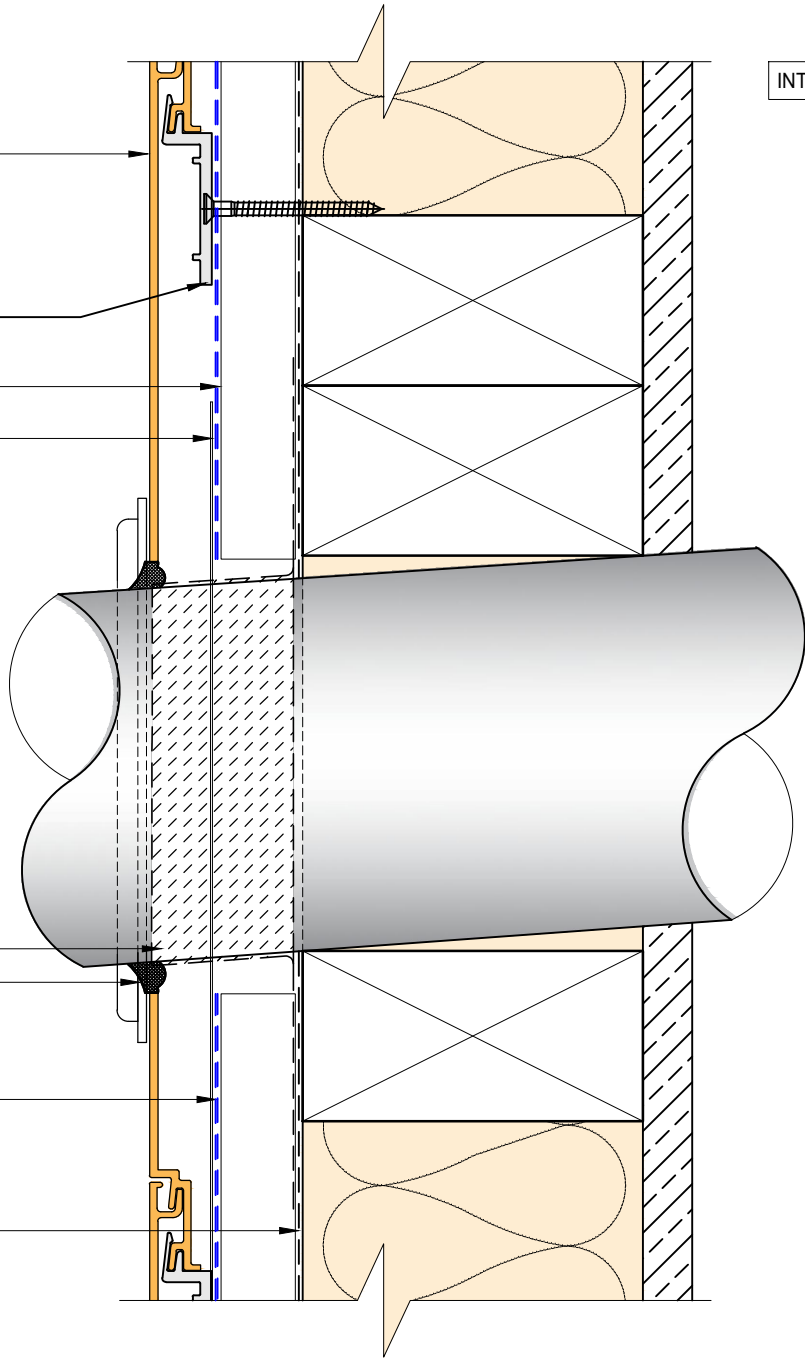
Pipe cover flange bed sealed to Archimax Cladding by others

Flexible flashing tape

Sealant around pipe penetration

Archimax® strip isolator (between aluminium & treated timber battens)

Building underlay



BRANZ Appraised
Appraisal No. 1173 [2021]



System
AM 201 - HORIZONTAL WEATHERBOARD

Detail
ARCHIMAX® PIPE PENETRATION - SECTION VIEW DETAIL

Drawing No. Rev.
AM-PP-H9b E

This drawing is the copyright of Archimax Limited. Modification of details for job specification requirements must be approved by Archimax Ltd. The building designer is ultimately responsible to ensure all building work is designed and constructed according to building code requirements, best code of practice industry guidelines. All components must be supplied by Archimax. Archimax reserves the right to alter or upgrade details at any time without prior notice.

Scale Date
1:2 NOV24

EXTERIOR

INTERIOR

5mm compressible foam tape, or use sealant to seal the gap

Archimax® AM 018 end capping cover part B (3)

Archimax® AM 016 capping cover clip (4)

Archimax® AM 017 end capping cover part A (5)

Fixing needs to be at the center so the cover clip prevents contact with the screw and avoid any problems with its notch

5mm Drain Holes @ 30mm spacing c/c

Countersunk screws

- for horizontal cladding above 4 meters, secure 1 screw at the top for every meter of width.
- for horizontal cladding above 6 meters, secure 1 screw at the top & middle for every meter of width.

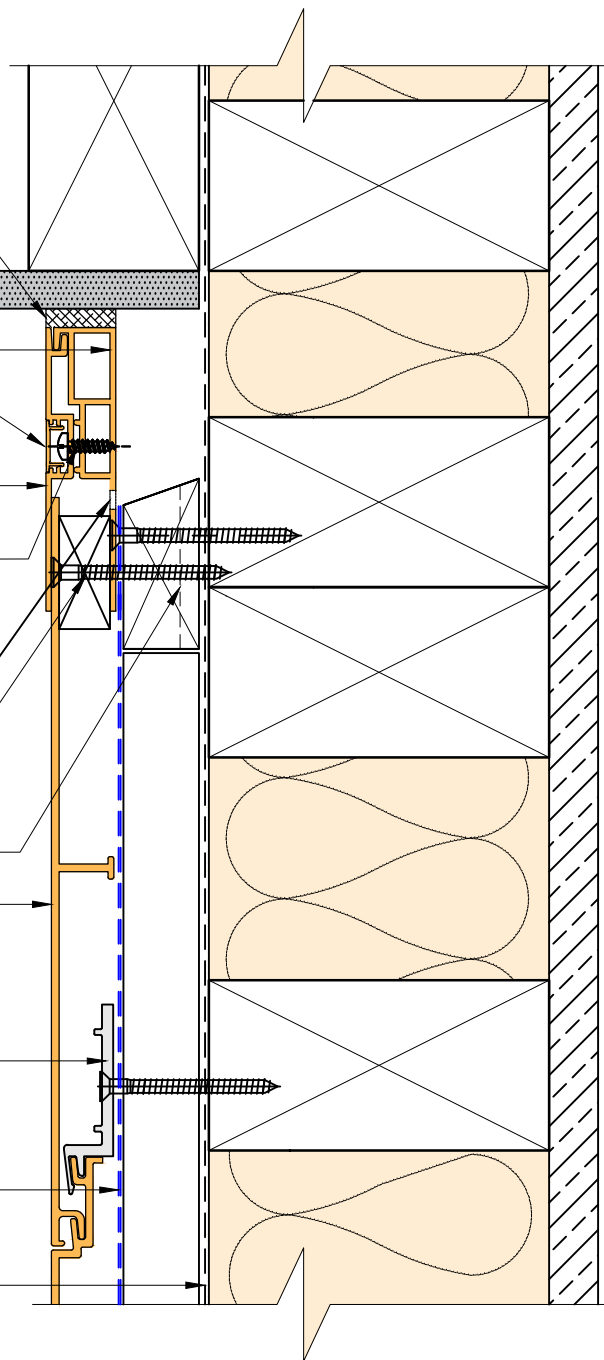
Horizontal battens

Archimax® AM 201 horizontal weatherboard fixed with clip brackets @ 800mm max centers with 1-10g x 65mm csk sq s.s. self tapping screws through the cladding battens (1)

Archimax® clip bracket AM 050

Archimax® strip isolator (between aluminium & treated timber battens)


Building underlay

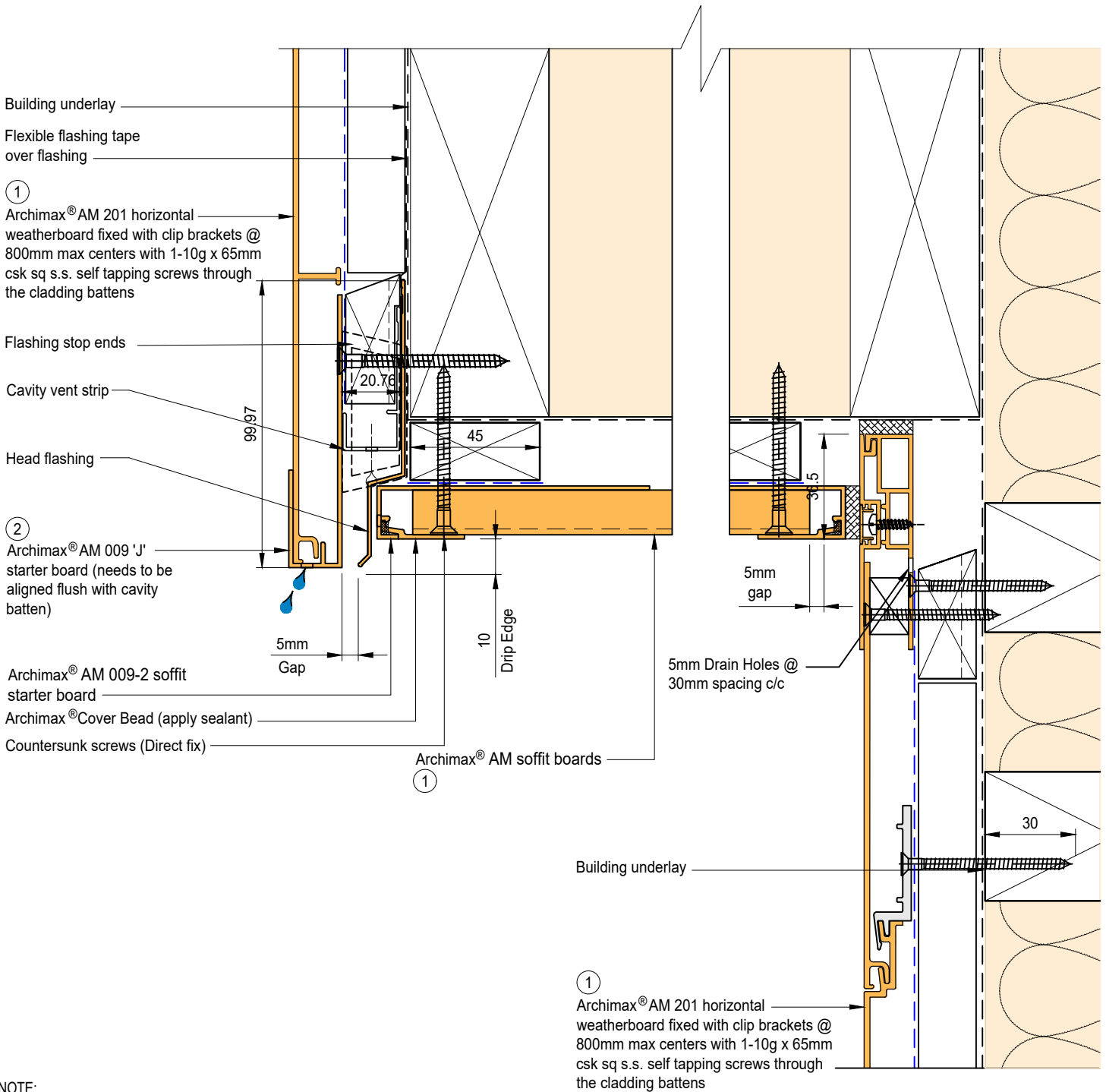


NOTE:

1. Ideally, use 5mm compressible foam tape, or use sealant to seal the gap between soffit and Archimax cladding depending on the site situation.
2. For horizontal cladding more than 4 meters, secure 1 screw at the top for every meter of width. If it exceeds 6 meters, fix at both top and middle with one screw each.
4. Timber Cavity Batten at 800mm max spacing.
5. Secure the AM029 clip with 1 screw for standard use, or 2 screws for added support




 <p>ARCHIMAX ALUMINIUM CLADDING SYSTEM <i>Creating more durable building envelopes</i> www.archimax.co.nz</p>	<p>System AM 201 - HORIZONTAL WEATHERBOARD</p>	<p>Detail ARCHIMAX® SOFFIT DETAIL</p>	<p>Drawing No. Rev. AM-SO-H10 E</p>
	<p>This drawing is the copyright of Archimax Limited. Modification of details for job specification requirements must be approved by Archimax Ltd. The building designer is ultimately responsible to ensure all building work is designed and constructed according to building code requirements, best code of practice industry guidelines. All components must be supplied by Archimax. Archimax reserves the right to alter or upgrade details at any time without prior notice.</p>		<p>Scale Date 1:2 NOV24</p>

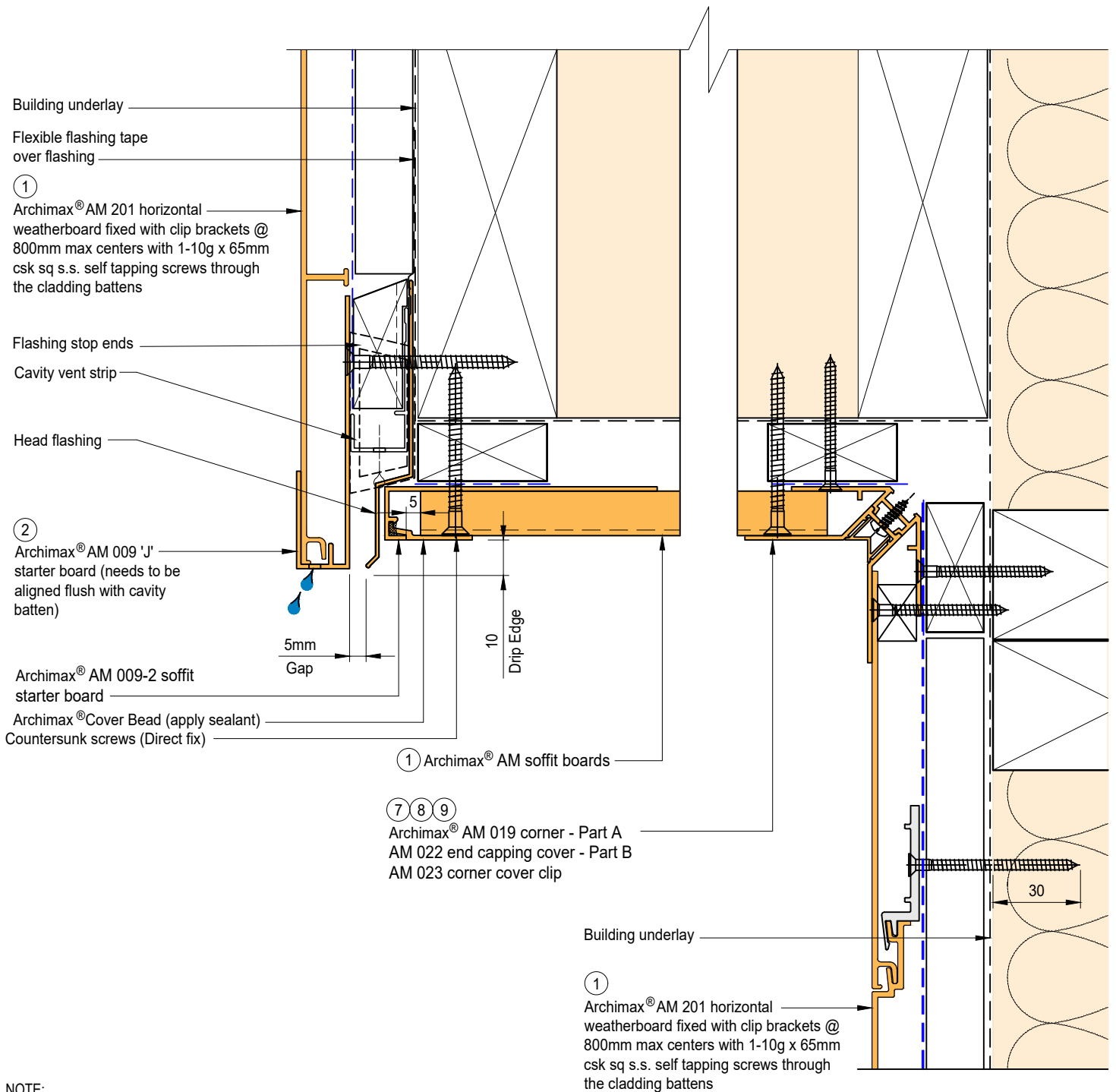


NOTE:

1. Stop ends to be installed at flashing ends.
2. Soffit requires direct fixing without brackets.
3. Timber Cavity Batten at 800mm max spacing.
4. Secure the AM029 clip with 1 screw for standard use, or 2 screws for added support




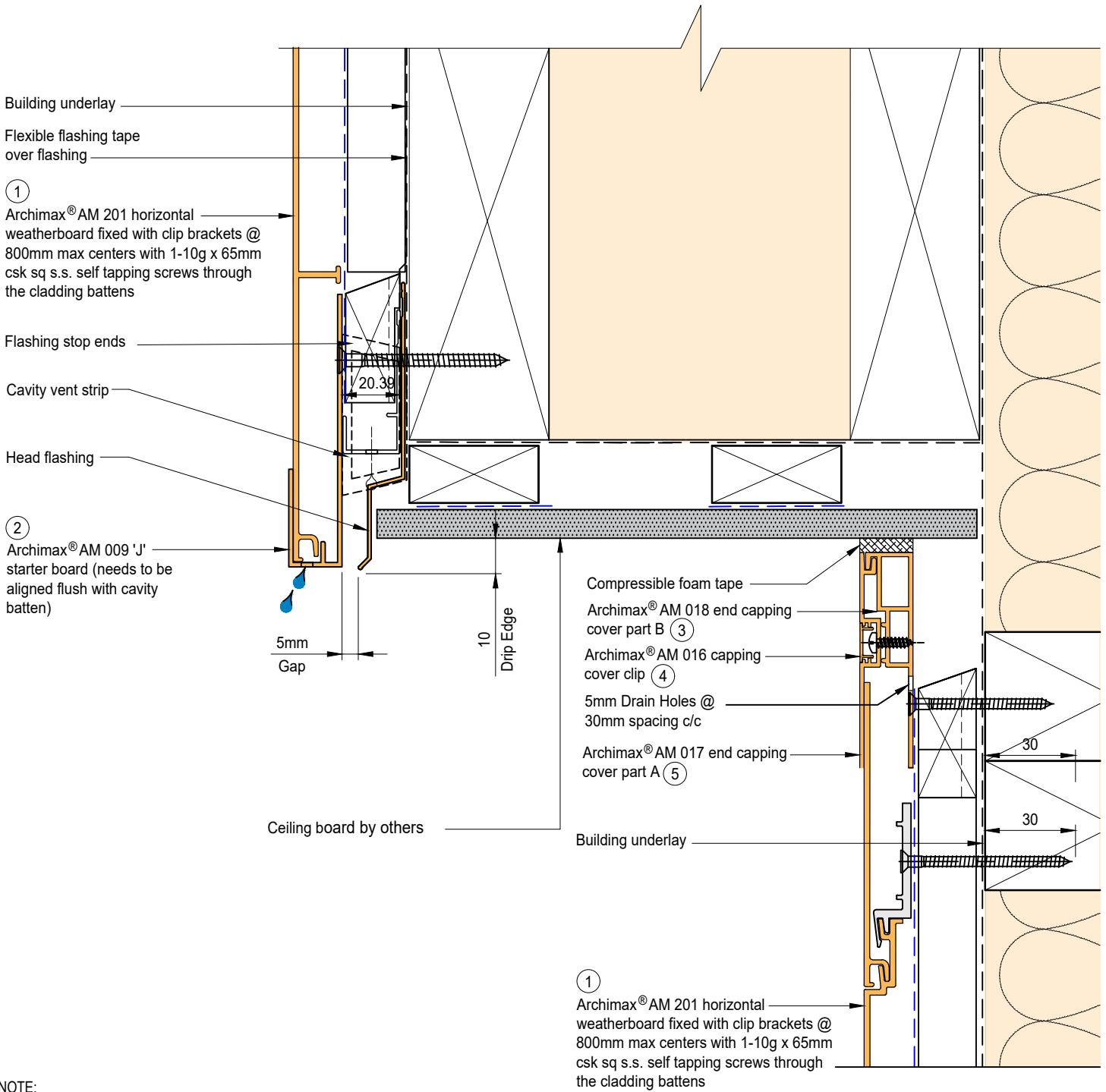
 <p>ARCHIMAX ALUMINIUM CLADDING SYSTEM <i>Creating more durable building envelopes</i> www.archimax.co.nz</p>	<p>System AM 201 - HORIZONTAL WEATHERBOARD</p>	<p>Detail ARCHIMAX® FASCIA, SOFFIT & WALL DETAIL</p>	<p>Drawing No. Rev. AM-SO-H11.1 E</p>
	<p>This drawing is the copyright of Archimax Limited. Modification of details for job specification requirements must be approved by Archimax Ltd. The building designer is ultimately responsible to ensure all building work is designed and constructed according to building code requirements, best code of practice industry guidelines. All components must be supplied by Archimax. Archimax reserves the right to alter or upgrade details at any time without prior notice.</p>		<p>Scale Date 1:2 NOV24</p>



- NOTE:
1. Stop ends to be installed at flashing ends.
 2. Soffit requires direct fixing without brackets.
 3. Timber Cavity Batten at 800mm max spacing.
 4. Secure the AM029 clip with 1 screw for standard use, or 2 screws for added support




 <p>ARCHIMAX ALUMINIUM CLADDING SYSTEM <i>Creating more durable building envelopes</i> www.archimax.co.nz</p>	<p>System AM 201 - HORIZONTAL WEATHERBOARD</p>	<p>Detail ARCHIMAX® FASCIA, SOFFIT & WALL DETAIL (90° SOFFIT / WALL) DETAIL</p>	<p>Drawing No. Rev. AM-SO-H11.2 E</p>
	<p>This drawing is the copyright of Archimax Limited. Modification of details for job specification requirements must be approved by Archimax Ltd. The building designer is ultimately responsible to ensure all building work is designed and constructed according to building code requirements, best code of practice industry guidelines. All components must be supplied by Archimax. Archimax reserves the right to alter or upgrade details at any time without prior notice.</p>		<p>Scale Date 1:2 NOV24</p>



NOTE:
STOP ENDS TO BE INSTALLED AT FLASHING ENDS



 <p>ARCHIMAX ALUMINIUM CLADDING SYSTEM <i>Creating more durable building envelopes</i> www.archimax.co.nz</p>	<p>System AM 201 - HORIZONTAL WEATHERBOARD</p>	<p>Detail ARCHIMAX® FASCIA, BOARD SOFFIT & WALL DETAIL</p>	<p>Drawing No. Rev. AM-SO-H11.3 E</p>
	<p>This drawing is the copyright of Archimax Limited. Modification of details for job specification requirements must be approved by Archimax Ltd. The building designer is ultimately responsible to ensure all building work is designed and constructed according to building code requirements, best code of practice industry guidelines. All components must be supplied by Archimax. Archimax reserves the right to alter or upgrade details at any time without prior notice.</p>		<p>Scale Date 1:2 NOV24</p>

EXTERIOR

Selected roofing

Flashing & sealed by others

Archimax® AM 018 end capping cover part B (needs to be aligned flush with cavity ③ batten)

Archimax® AM 016 capping cover clip ④

5mm Drain Holes @ 30mm spacing c/c

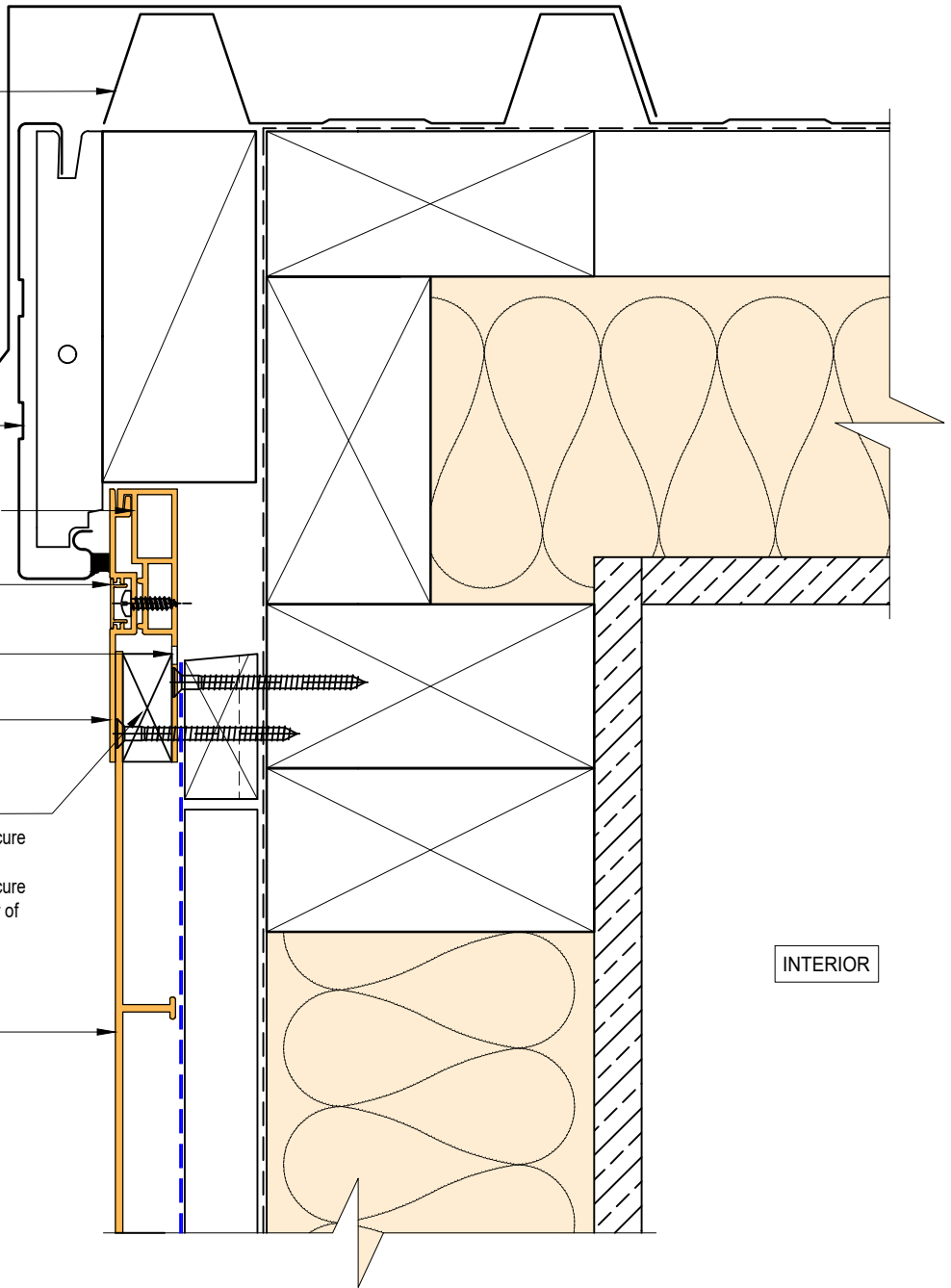
Archimax® AM 017 end capping cover part A ⑤

Countersunk screws

- for horizontal cladding above 4 meters, secure 1 screw at the top for every meter of width.
- for horizontal cladding above 6 meters, secure 1 screw at the top & middle for every meter of width.

Archimax® AM 201 horizontal weatherboard fixed with clip brackets @ 800mm max centers with 1-10g x 65mm csk sq s.s. self tapping screws through the cladding battens ①

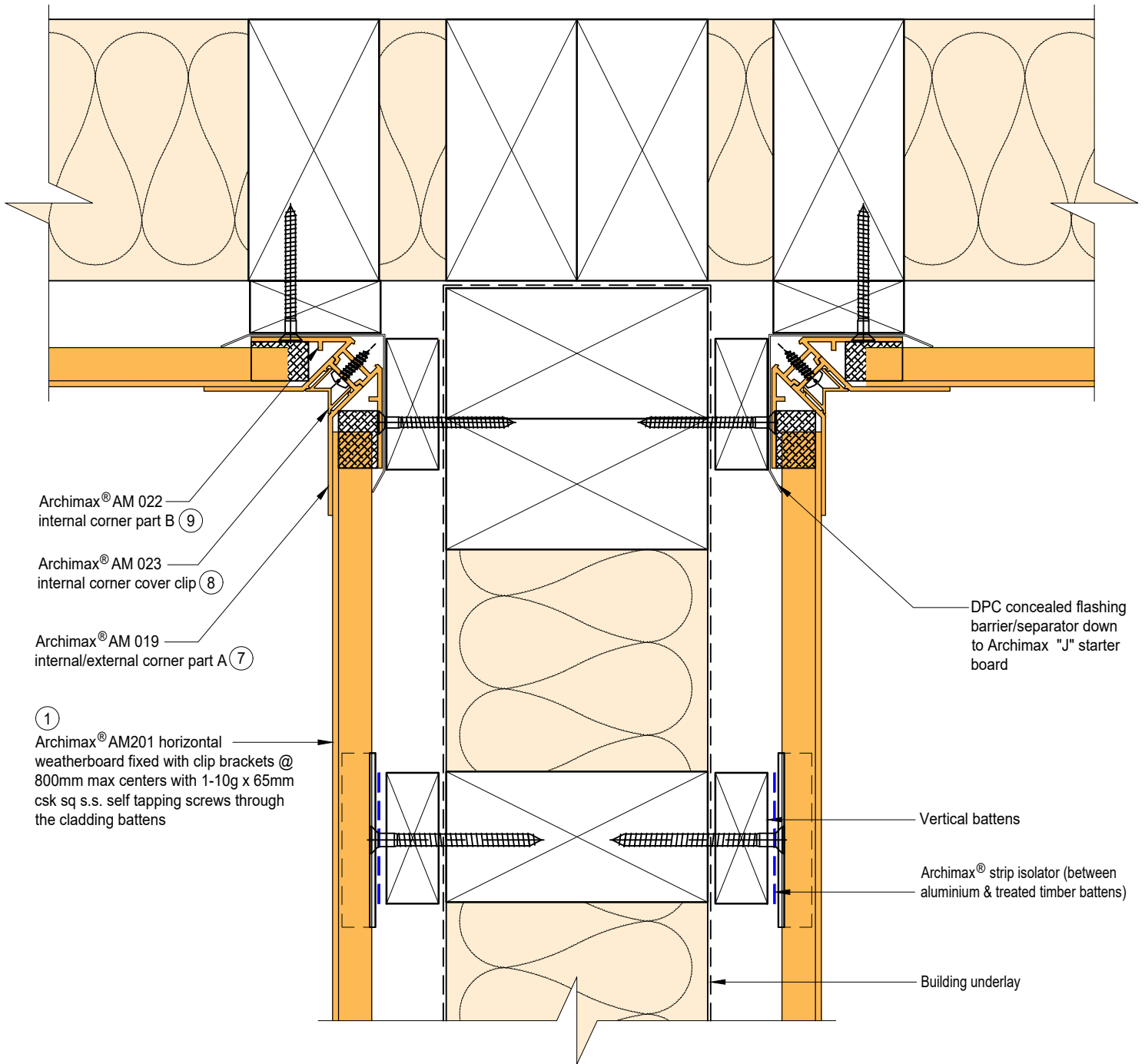
INTERIOR



NOTE:

1. For horizontal cladding more than 4 meters, secure 1 screw at the top for every meter of width. If it exceeds 6 meters, fix at both top and middle with one screw each.





Archimax® AM 022
internal corner part B (9)

Archimax® AM 023
internal corner cover clip (8)

Archimax® AM 019
internal/external corner part A (7)

(1)
Archimax® AM201 horizontal
weatherboard fixed with clip brackets @
800mm max centers with 1-10g x 65mm
csk sq s.s. self tapping screws through
the cladding battens

DPC concealed flashing
barrier/separator down
to Archimax "J" starter
board

Vertical battens

Archimax® strip isolator (between
aluminium & treated timber battens)

Building underlay



BRANZ Appraised
Appraisal No. 1173 [2021]

ARCHIMAX
ALUMINIUM CLADDING SYSTEM
Creating more durable building envelopes
www.archimax.co.nz

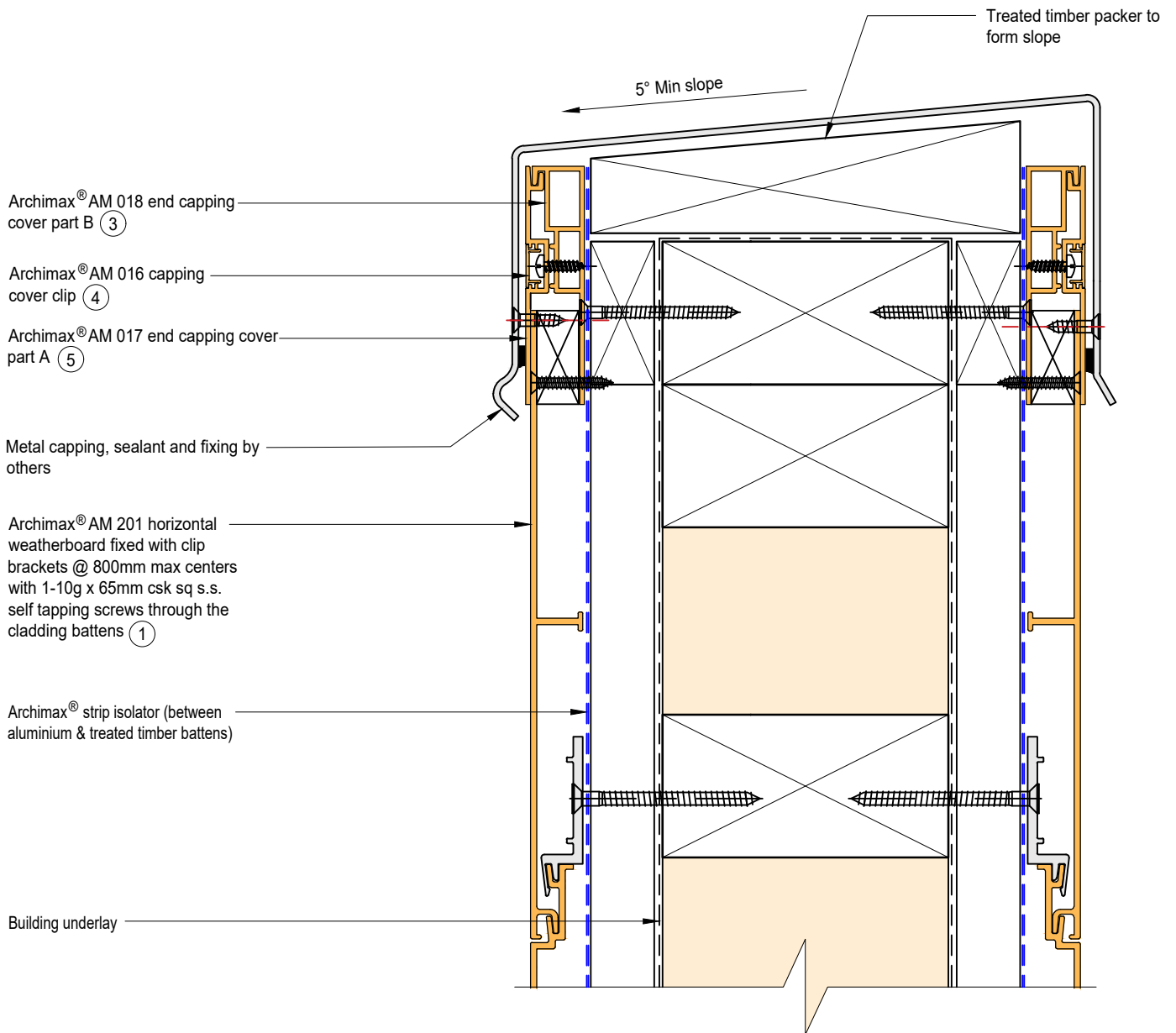
System
AM 201 - HORIZONTAL
WEATHERBOARD

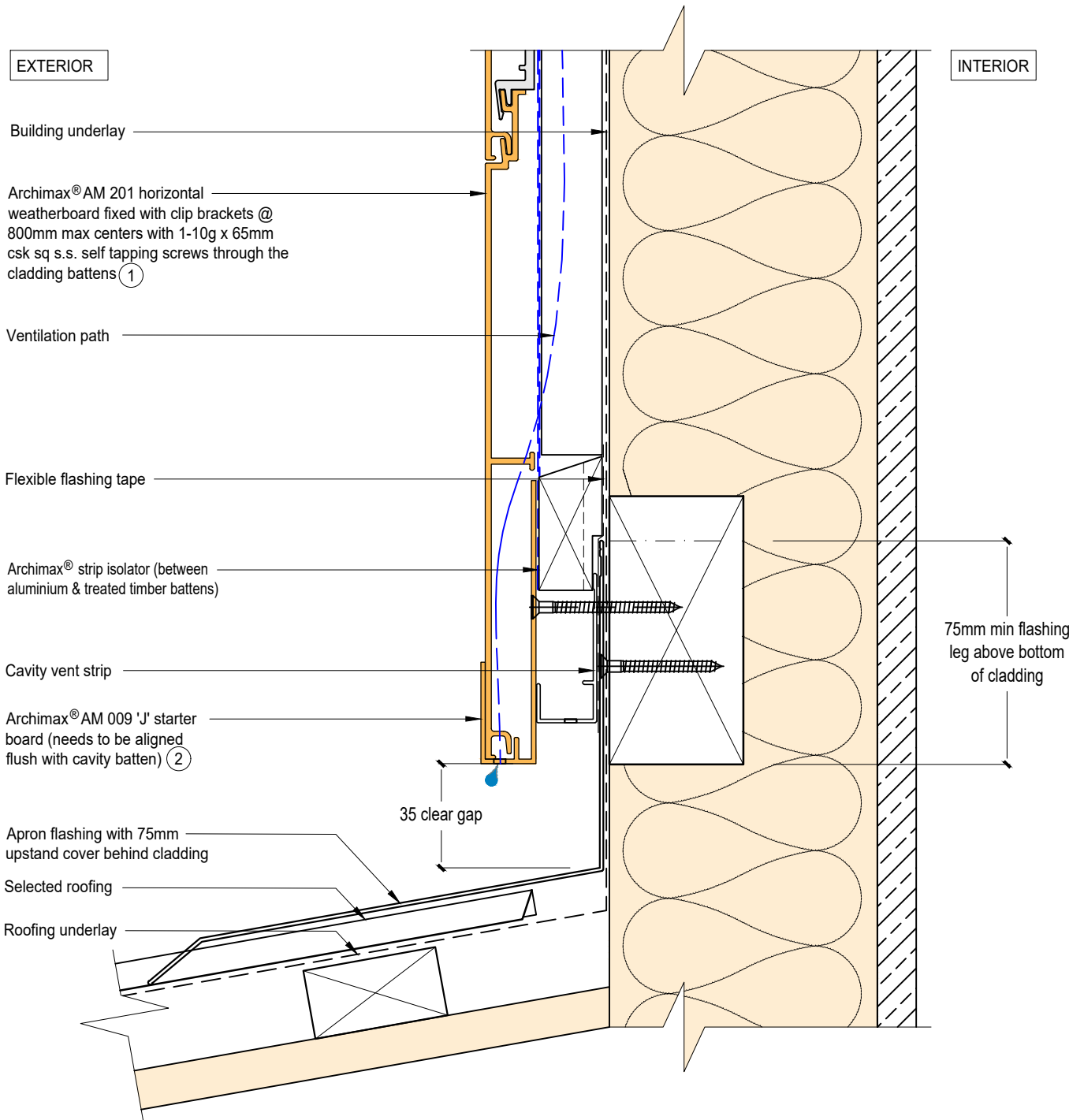
Detail
ARCHIMAX® INTERNAL CORNER
JUNCTION DETAIL


Drawing No. Rev.
AM-BJ-H13 E

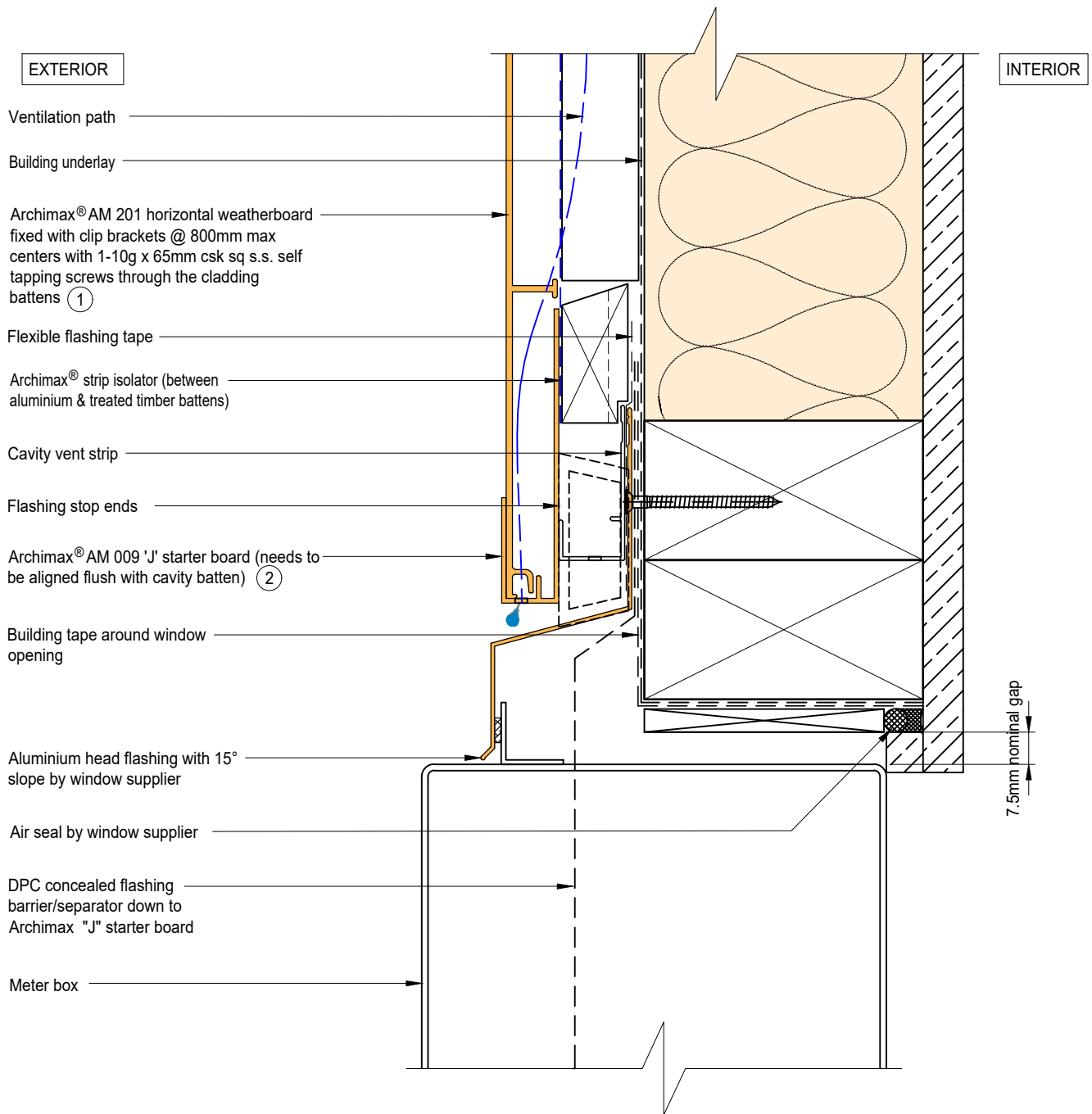
This drawing is the copyright of Archimax Limited. Modification of details for job specification requirements must be approved by Archimax Ltd. The building designer is ultimately responsible to ensure all building work is designed and constructed according to building code requirements, best code of practice industry guidelines. All components must be supplied by Archimax. Archimax reserves the right to alter or upgrade details at any time without prior notice.

Scale Date
1:2 NOV24






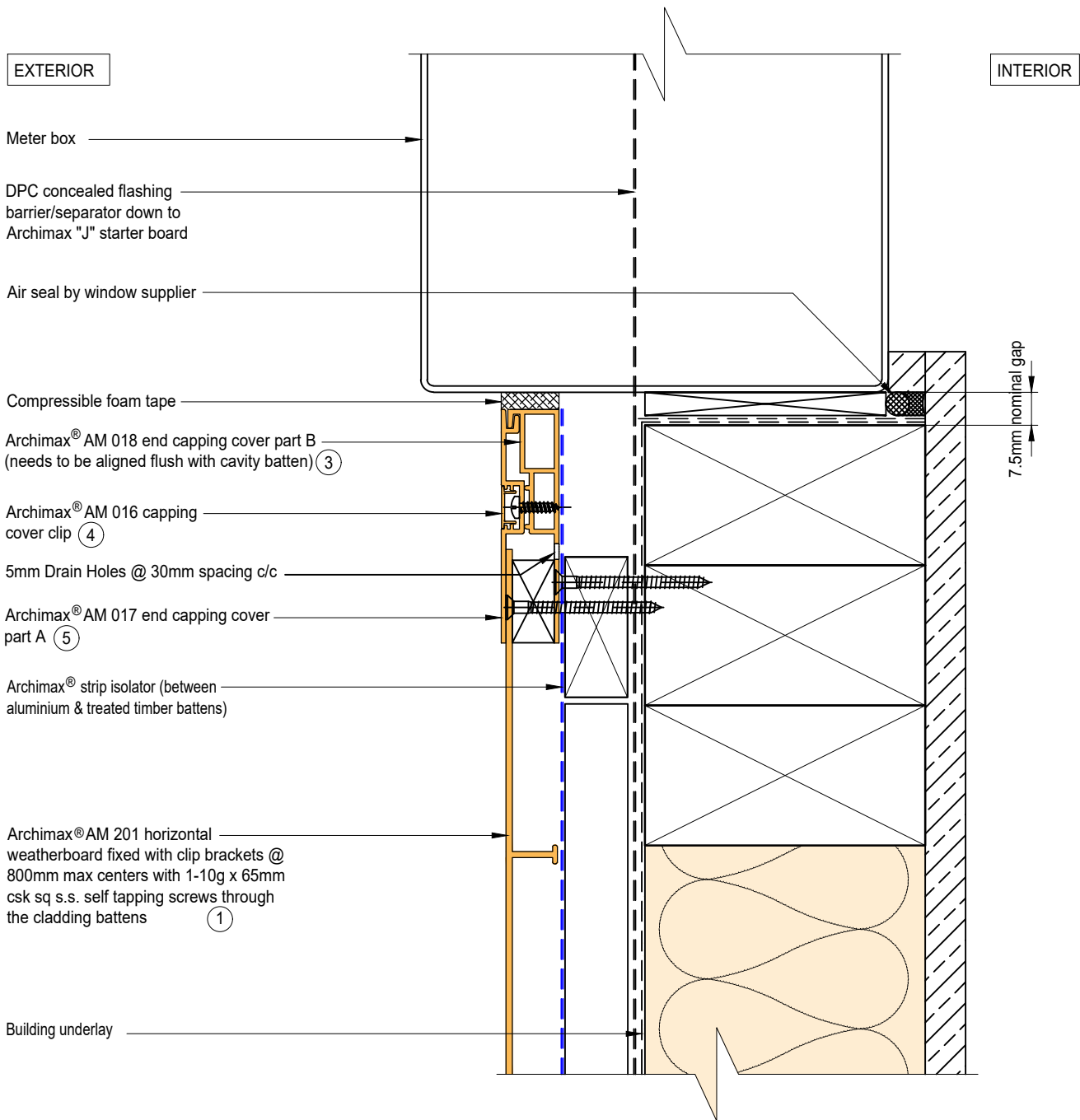
 <p>ARCHIMAX ALUMINIUM CLADDING SYSTEM <i>Creating more durable building envelopes</i> www.archimax.co.nz</p>	<p>System AM 201 - HORIZONTAL WEATHERBOARD</p>	<p>Detail ARCHIMAX® LOWER ROOF WALL JUNCTION DETAIL</p>	<p>Drawing No. Rev. AM-RW-H15 E</p>
	<p>This drawing is the copyright of Archimax Limited. Modification of details for job specification requirements must be approved by Archimax Ltd. The building designer is ultimately responsible to ensure all building work is designed and constructed according to building code requirements, best code of practice industry guidelines. All components must be supplied by Archimax. Archimax reserves the right to alter or upgrade details at any time without prior notice.</p>		<p>Scale Date 1:2 NOV24</p>




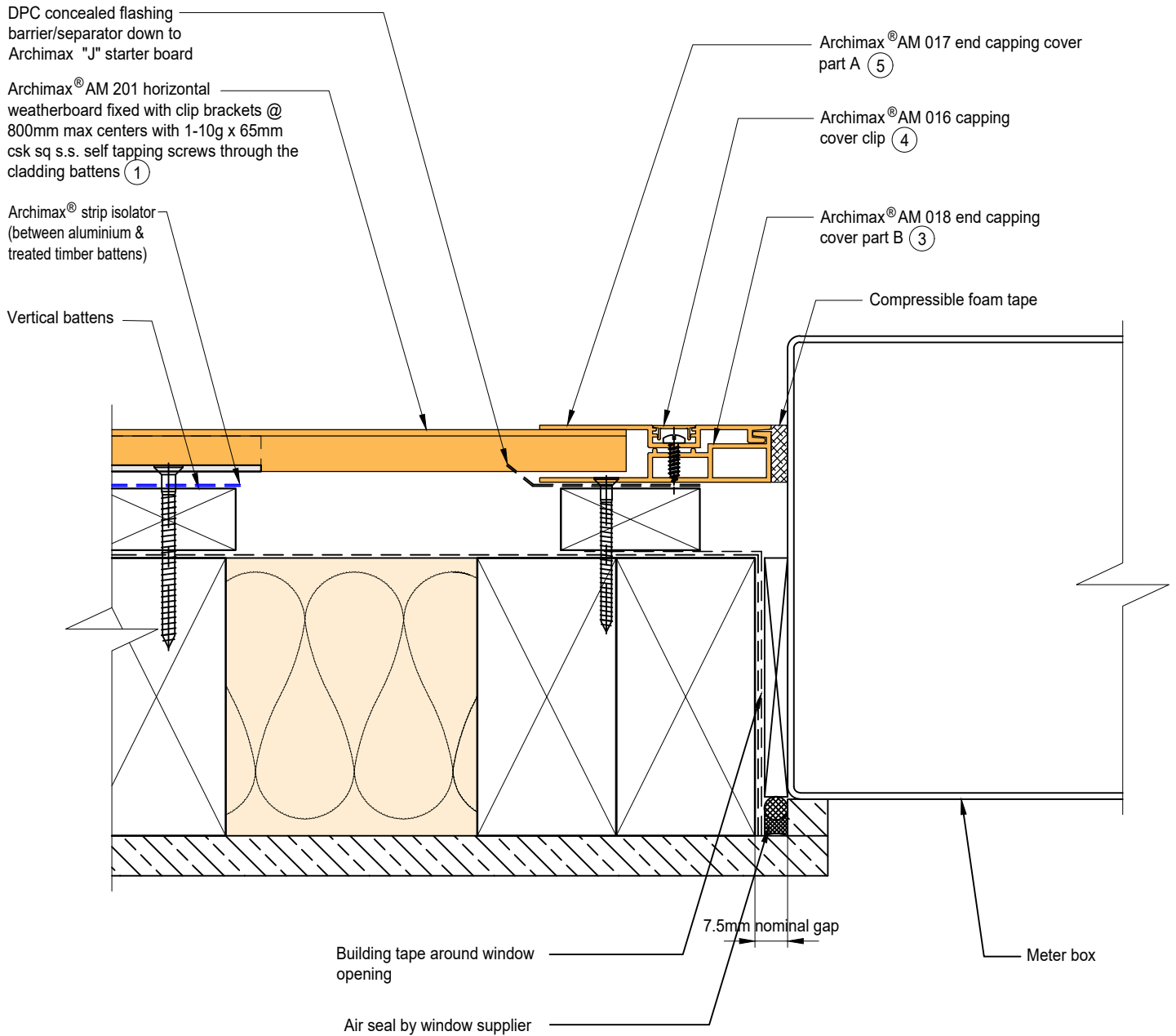
NOTE:
STOP ENDS TO BE INSTALLED AT FLASHING ENDS




 <p>ARCHIMAX ALUMINIUM CLADDING SYSTEM <i>Creating more durable building envelopes</i> www.archimax.co.nz</p>	<p>System AM 201 - HORIZONTAL WEATHERBOARD</p>	<p>Detail ARCHIMAX® METER BOX HEAD DETAIL</p>	<p>Drawing No. Rev. AM-MB-H16 E</p>
	<p>This drawing is the copyright of Archimax Limited. Modification of details for job specification requirements must be approved by Archimax Ltd. The building designer is ultimately responsible to ensure all building work is designed and constructed according to building code requirements, best code of practice industry guidelines. All components must be supplied by Archimax. Archimax reserves the right to alter or upgrade details at any time without prior notice.</p>		<p>Scale Date 1:2 NOV24</p>

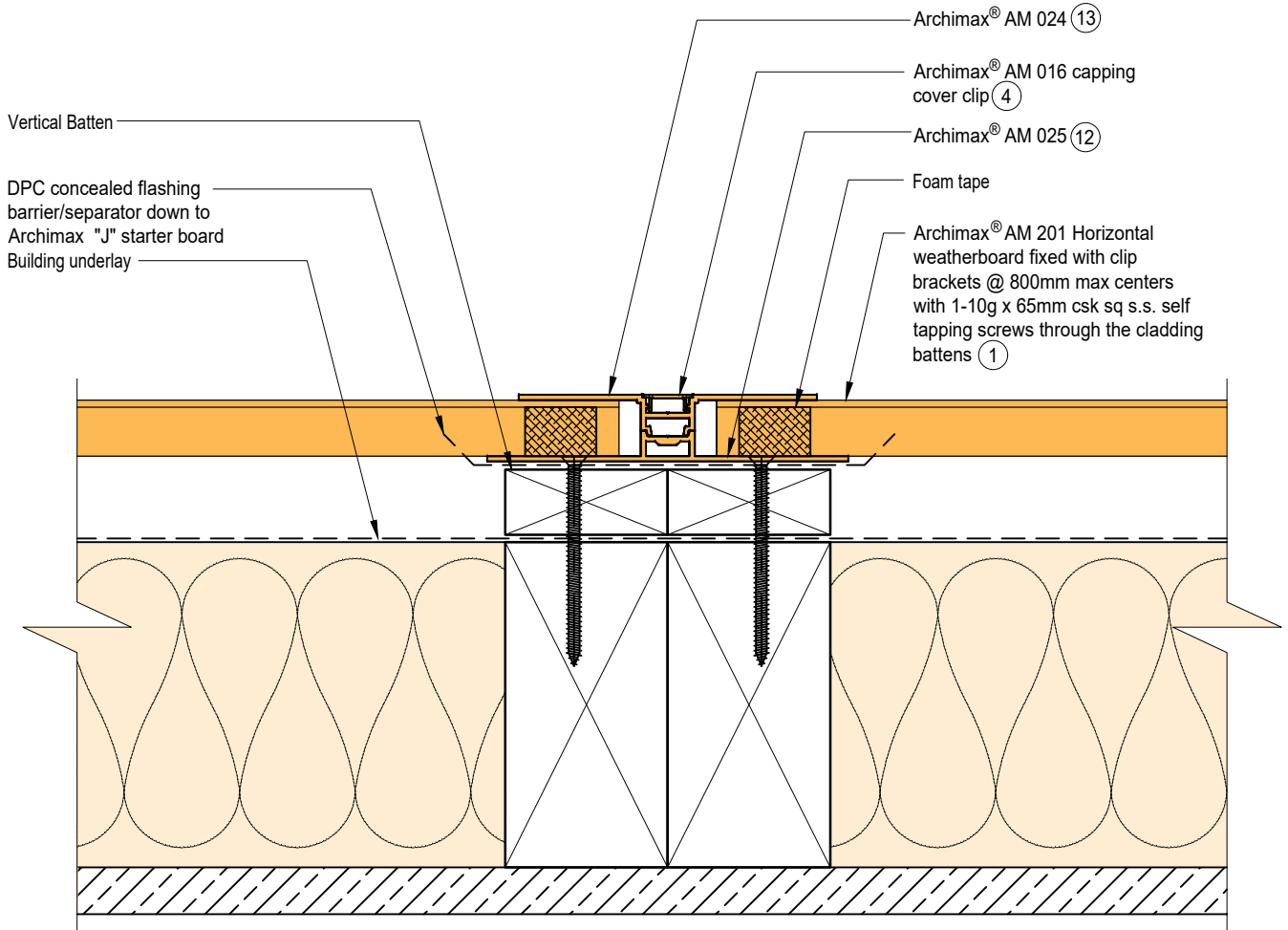


 <p>ARCHIMAX ALUMINIUM CLADDING SYSTEM <i>Creating more durable building envelopes</i> www.archimax.co.nz</p>	<p>System AM 201 - HORIZONTAL WEATHERBOARD</p>	<p>Detail ARCHIMAX® METER BOX SILL DETAIL</p>	<p>Drawing No. Rev. AM-MB-H17 E</p>
	<p>This drawing is the copyright of Archimax Limited. Modification of details for job specification requirements must be approved by Archimax Ltd. The building designer is ultimately responsible to ensure all building work is designed and constructed according to building code requirements, best code of practice industry guidelines. All components must be supplied by Archimax. Archimax reserves the right to alter or upgrade details at any time without prior notice.</p>		<p>Scale Date 1:2 NOV24</p>



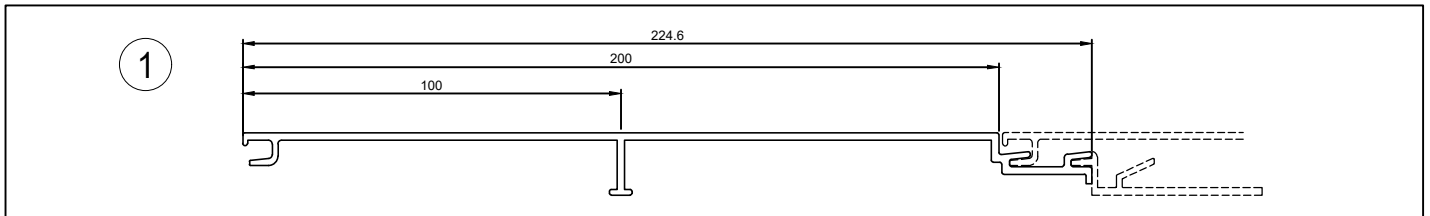
 <p>ARCHIMAX ALUMINIUM CLADDING SYSTEM <i>Creating more durable building envelopes</i> www.archimax.co.nz</p>	<p>System AM 201 - HORIZONTAL WEATHERBOARD</p>	<p>Detail ARCHIMAX® METER BOX JAMB DETAIL</p>	<p>Drawing No. Rev. AM-MB-H18 E</p>
	<p>This drawing is the copyright of Archimax Limited. Modification of details for job specification requirements must be approved by Archimax Ltd. The building designer is ultimately responsible to ensure all building work is designed and constructed according to building code requirements, best code of practice industry guidelines. All components must be supplied by Archimax. Archimax reserves the right to alter or upgrade details at any time without prior notice.</p>		<p>Scale Date 1:2 NOV24</p>

EXTERIOR

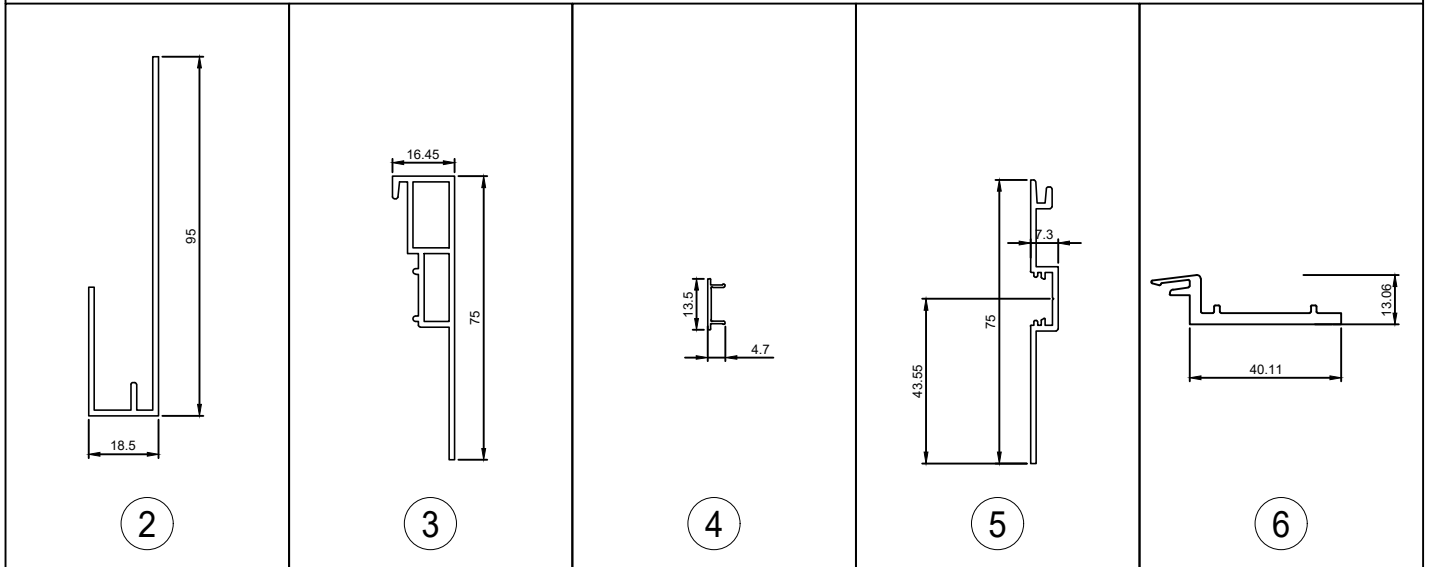


INTERIOR

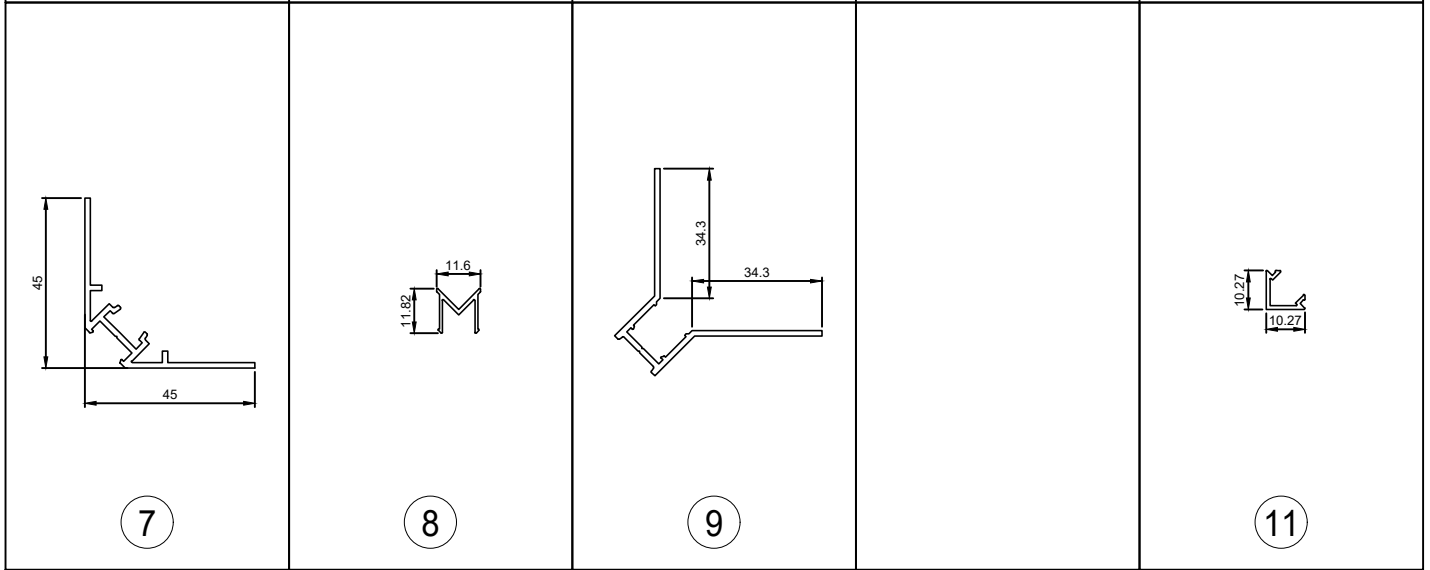




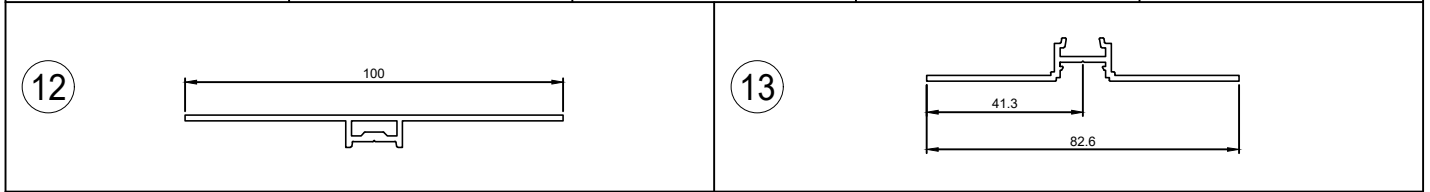
AM 201 Archimax Horizontal/Vertical Weatherboard




AM 009	AM 018	AM 016	AM 017	AM 050
"J" Starter Board	End capping part B	Jointer / Jamb / Sill capping cover clip	End Capping part A	Clip Bracket



AM 019	AM 023	AM 022		AM 020
Internal/External corner part A	Internal Corner cover clip	Internal Corner part B		External Corner cover clip



AM 025 Jointer part A	AM 024 Jointer part B
-----------------------	-----------------------

 <p>ARCHIMAX ALUMINIUM CLADDING SYSTEM Creating more durable building envelopes www.archimax.co.nz</p>	System AM201	Detail --	Drawing No. --	Rev. -
	<p>This drawing is the copyright of Archimax Limited. Modification of details for job specification requirements must be approved by Archimax Ltd. The building designer is ultimately responsible to ensure all building work is designed and constructed according to building code requirements, best code of practice industry guidelines. All components must be supplied by Archimax. Archimax reserves the right to alter or upgrade details at any time without prior notice.</p>			Scale 1:2