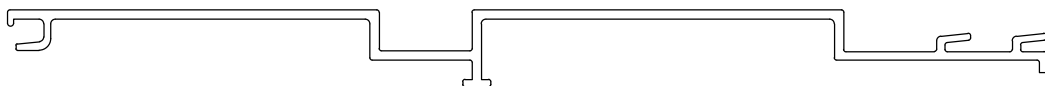


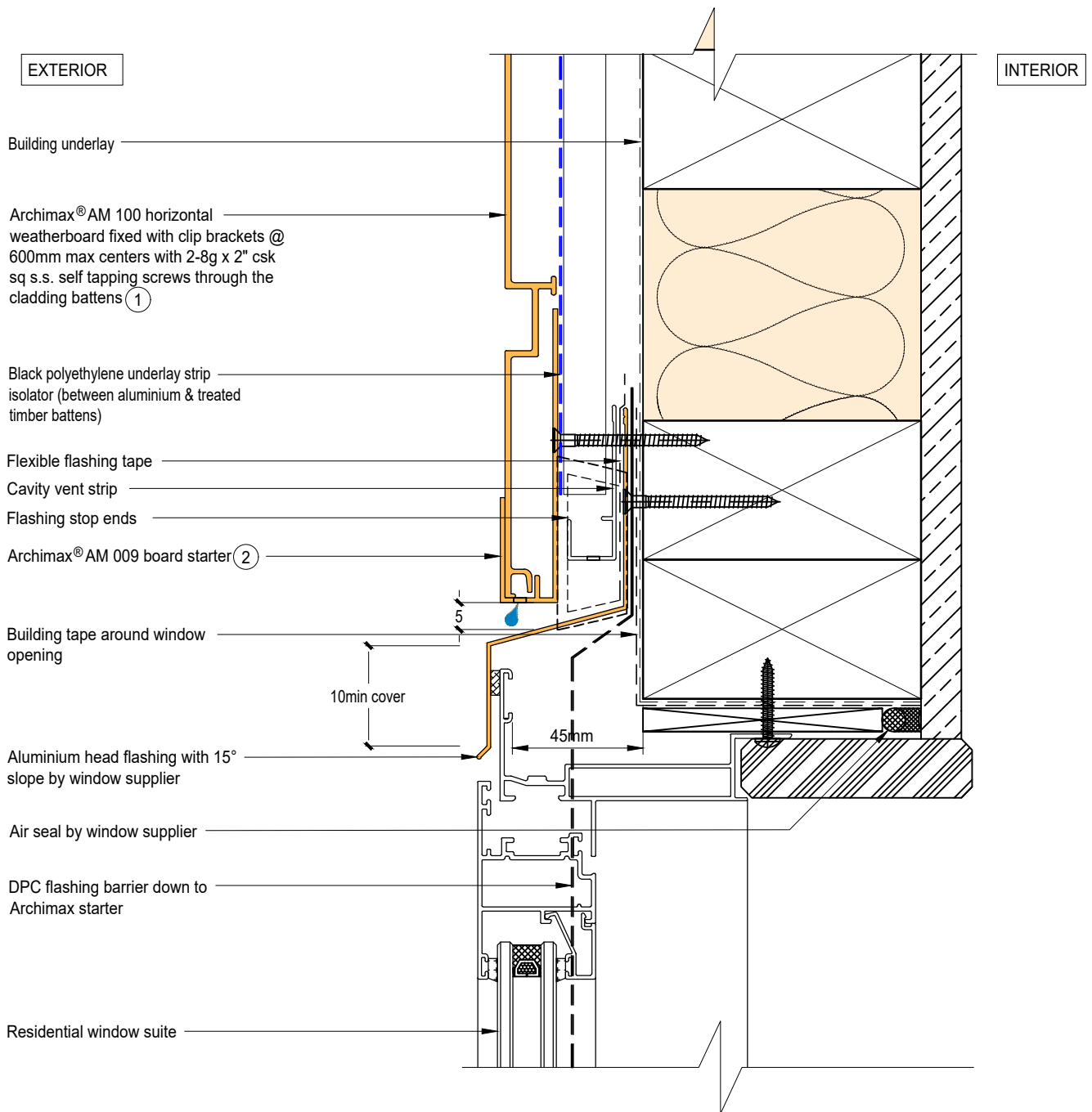


Archimax[®] Aluminium Cladding System
AM100 Horizontal Profile - Installation Details

| Drawing No. | Rev | Description |
|-------------|-----|---|
| AM-WH-H1 | D | Archimax [®] Window Head Detail |
| AM-WS-H2.1 | D | Archimax [®] Window Sill Detail |
| AM-WS-H2.2 | D | Archimax [®] Window Sill Detail |
| AM-WJ-H3 | D | Archimax [®] Window Jamb Detail |
| AM-EXT-H4 | D | Archimax [®] External Corner Detail |
| AM-INT-H5 | D | Archimax [®] Internal Corner Detail |
| AM-CBS-H6.1 | D | Archimax [®] Concrete Floor Board Starter Detail - Timber |
| AM-CBS-H6.2 | D | Archimax [®] Concrete Floor Board Starter Detail - Fire Wall |
| AM-HJ-H7 | D | Archimax [®] Horizontal Joint Detail |
| AM-DJ-H8 | D | Archimax [®] Deck Junction Detail |
| AM-PP-H9A | D | Archimax [®] Pipe Penetration Plan View Detail |
| AM-PP-H9B | D | Archimax [®] Pipe Penetration Section View Detail |
| AM-SO-H10 | D | Archimax [®] Soffit Detail |
| AM-SO-H11.1 | D | Archimax [®] Fascia, Soffit & Wall Detail |
| AM-SO-H11.2 | D | Archimax [®] Fascia, Soffit & Wall Detail (90° Soffit/Wall) |
| AM-SO-H11.3 | D | Archimax [®] Fascia, Soffit & Wall Detail |
| AM-SO-H12 | D | Archimax [®] Non-Soffit Detail |
| AM-BJ-H13 | D | Archimax [®] Internal Corner Junction Detail |
| AM-PAR-H14 | D | Archimax [®] Parapet with Cavity Detail |
| AM-RW-H15 | D | Archimax [®] Lower Roof Wall Junction Detail |
| AM-MB-H16 | D | Archimax [®] Meter Box Head Detail |
| AM-MB-H17 | D | Archimax [®] Meter Box Sill Detail |
| AM-MB-H18 | D | Archimax [®] Meter Box Jamb Detail |
| AM-MB-H19 | D | Archimax [®] Vertical Joint Detail |




AM100
Coverage: 200mm

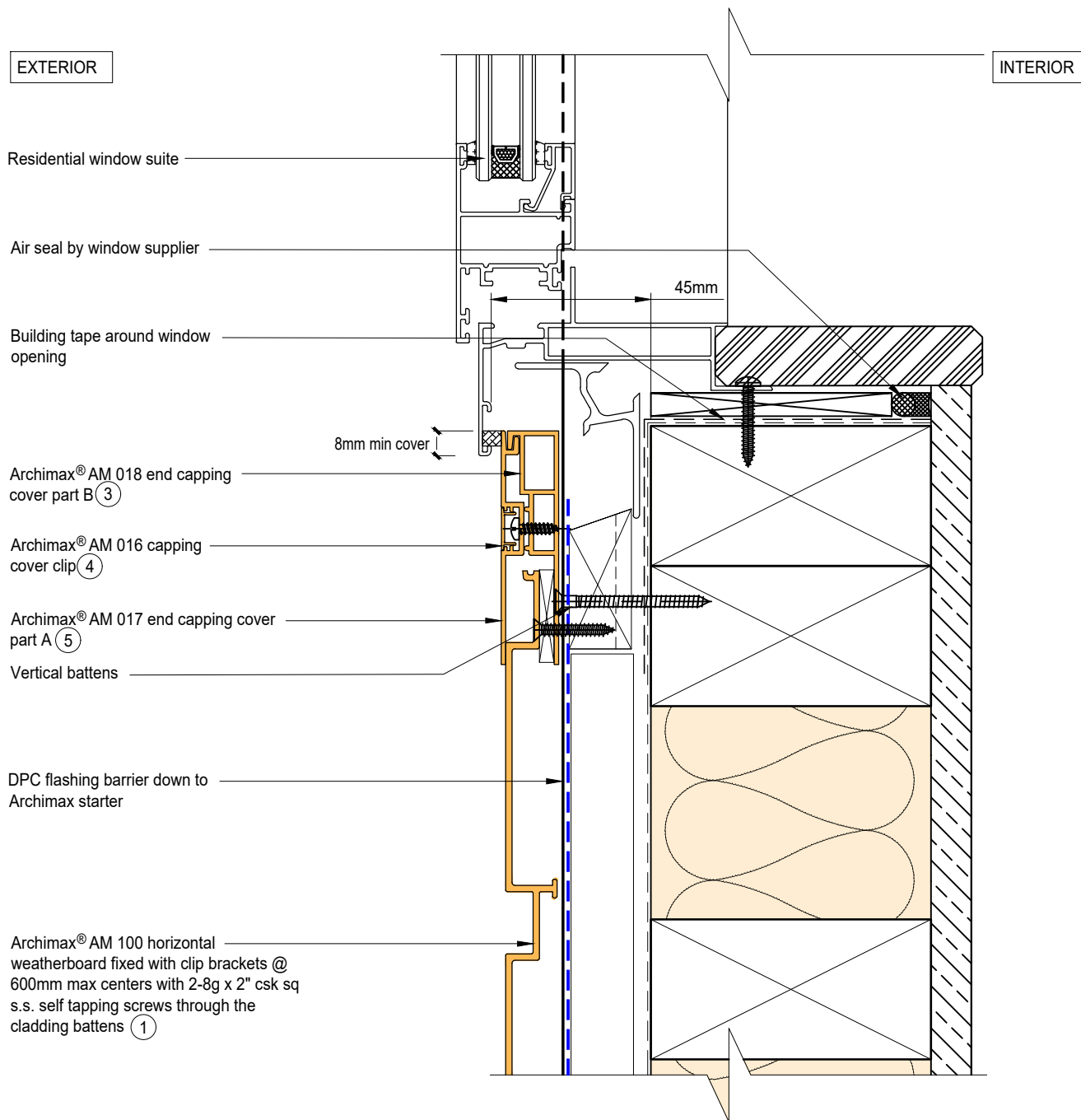


NOTE:

1. Stop ends to be installed at flashing ends.
2. Minimum Clearance between the AIR BARRIER and WINDOW JOINERY to be 45mm. Window Joinery should not be permanently fixed until cladding installed.




| | | | |
|--|---|--|--|
|  <p>ARCHIMAX ALUMINIUM CLADDING SYSTEM <i>Creating more durable building envelopes</i> www.archimax.co.nz</p> | <p>System AM 100 - HORIZONTAL WEATHERBOARD</p> | <p>Detail ARCHIMAX® WINDOW HEAD DETAIL</p> | <p>Drawing No. Rev. AM-WH-H1 D</p> |
| | <p>This drawing is the copyright of Archimax Limited. Modification of details for job specification requirements must be approved by Archimax Ltd. The building designer is ultimately responsible to ensure all building work is designed and constructed according to building code requirements, best code of practice industry guidelines. All components must be supplied by Archimax. Archimax reserves the right to alter or upgrade details at any time without prior notice.</p> | | <p>Scale Date 1:2 NOV23</p> |

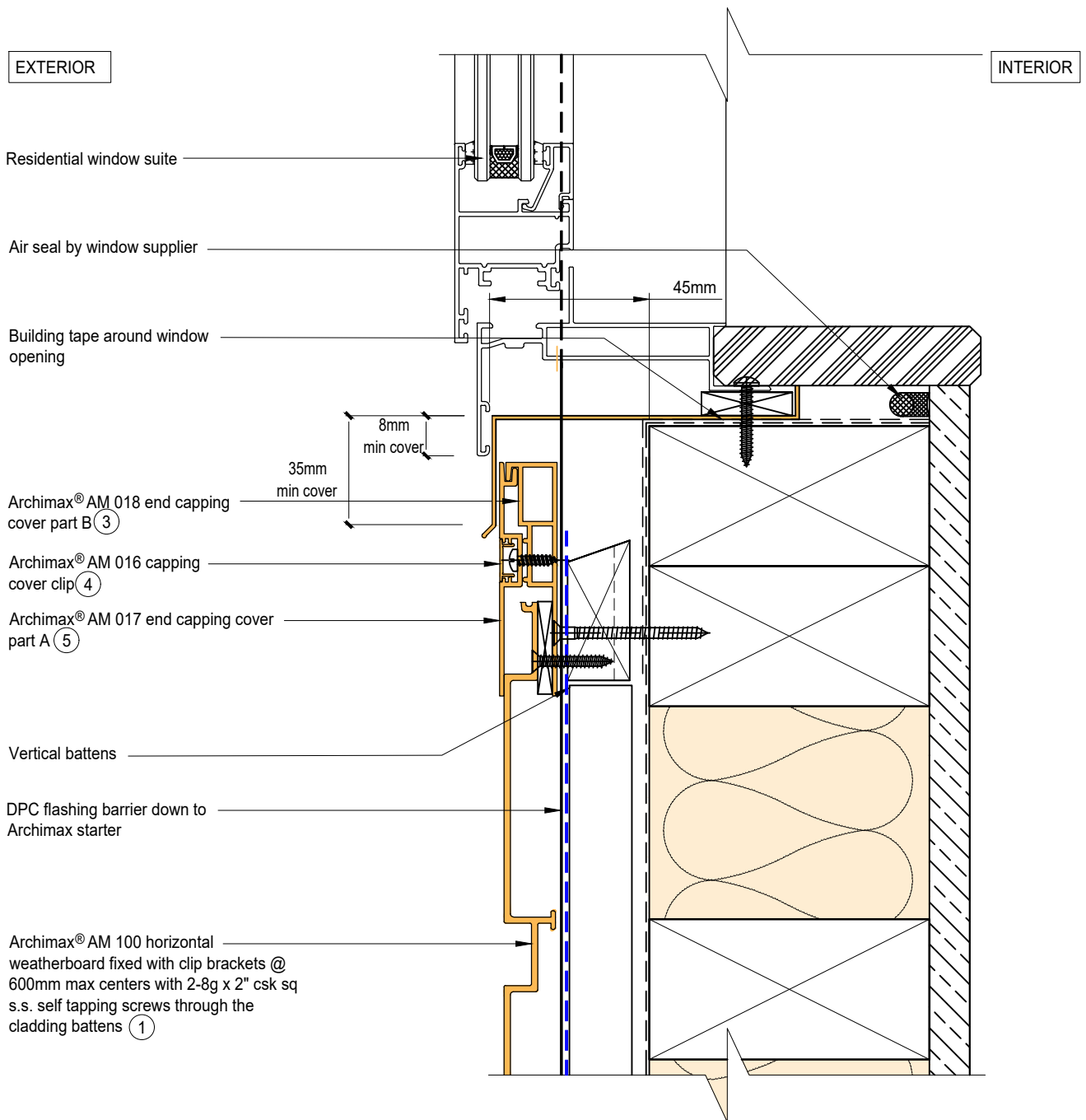


NOTE:

1. Minimum Clearance between the AIR BARRIER and WINDOW JOINERY to be 45mm. Window Joinery should not be permanently fixed until cladding installed.




| | | | |
|--|---|--|--|
|  <p>ARCHIMAX ALUMINIUM CLADDING SYSTEM <i>Creating more durable building envelopes</i> www.archimax.co.nz</p> | <p>System AM 100 - HORIZONTAL WEATHERBOARD</p> | <p>Detail ARCHIMAX® WINDOW SILL DETAIL</p> | <p>Drawing No. Rev. AM-WS-H2.1 D</p> |
| | <p>This drawing is the copyright of Archimax Limited. Modification of details for job specification requirements must be approved by Archimax Ltd. The building designer is ultimately responsible to ensure all building work is designed and constructed according to building code requirements, best code of practice industry guidelines. All components must be supplied by Archimax. Archimax reserves the right to alter or upgrade details at any time without prior notice.</p> | | <p>Scale Date 1:2 NOV23</p> |



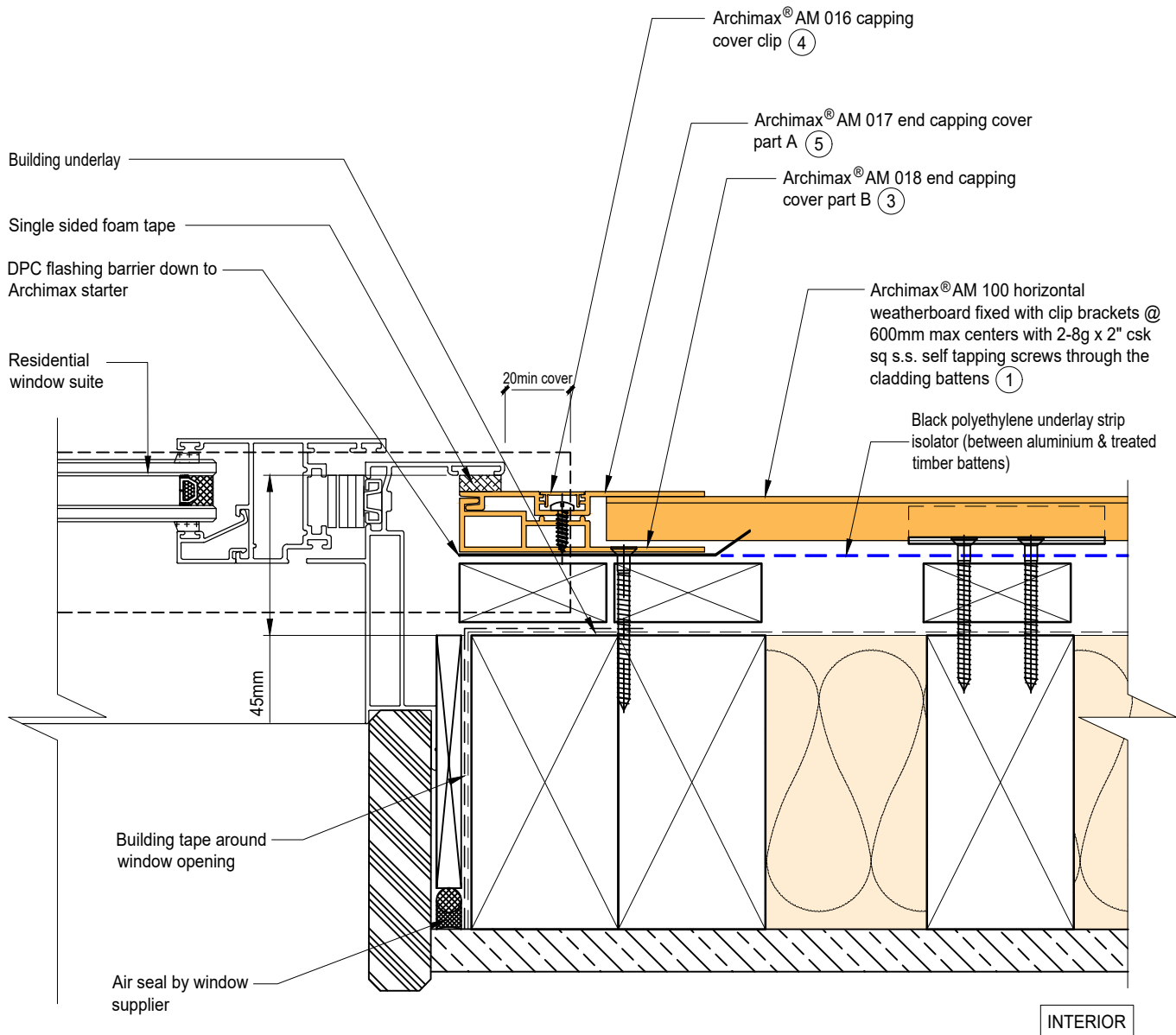
NOTE:

1. Minimum Clearance between the AIR BARRIER and WINDOW JOINERY to be 45mm. Window Joinery should not be permanently fixed until cladding installed.



| | | | |
|--|---|--|--|
|  <p>ARCHIMAX ALUMINIUM CLADDING SYSTEM <i>Creating more durable building envelopes</i> www.archimax.co.nz</p> | <p>System AM 100 - HORIZONTAL WEATHERBOARD</p> | <p>Detail ARCHIMAX® WINDOW SILL DETAIL</p> | <p>Drawing No. Rev. AM-WS-H2.2 D</p> |
| | <p>This drawing is the copyright of Archimax Limited. Modification of details for job specification requirements must be approved by Archimax Ltd. The building designer is ultimately responsible to ensure all building work is designed and constructed according to building code requirements, best code of practice industry guidelines. All components must be supplied by Archimax. Archimax reserves the right to alter or upgrade details at any time without prior notice.</p> | | <p>Scale Date 1:2 NOV23</p> |

EXTERIOR




INTERIOR

NOTE:

1. Minimum Clearance between the AIR BARRIER and WINDOW JOINERY to be 45mm. Window Joinery should not be permanently fixed until cladding installed.



| | | | |
|--|---|--|--|
|  <p>ARCHIMAX ALUMINIUM CLADDING SYSTEM Creating more durable building envelopes www.archimax.co.nz</p> | <p>System AM 100 - HORIZONTAL WEATHERBOARD</p> | <p>Detail ARCHIMAX® WINDOW JAMB DETAIL</p> | <p>Drawing No. Rev. AM-WJ-H3 D</p> |
| | <p>This drawing is the copyright of Archimax Limited. Modification of details for job specification requirements must be approved by Archimax Ltd. The building designer is ultimately responsible to ensure all building work is designed and constructed according to building code requirements, best code of practice industry guidelines. All components must be supplied by Archimax. Archimax reserves the right to alter or upgrade details at any time without prior notice.</p> | | <p>Scale Date 1:2 NOV23</p> |

EXTERIOR

INTERIOR

Building Underlay

Archimax® AM 100 horizontal weatherboard fixed with clip brackets @ 600mm max centers with 2-8g x 2" csk sq s.s. self tapping screws through the cladding battens ①

Black polyethylene underlay strip isolator (between aluminium & treated timber battens)

Vertical battens

Archimax® clip bracket AM 029

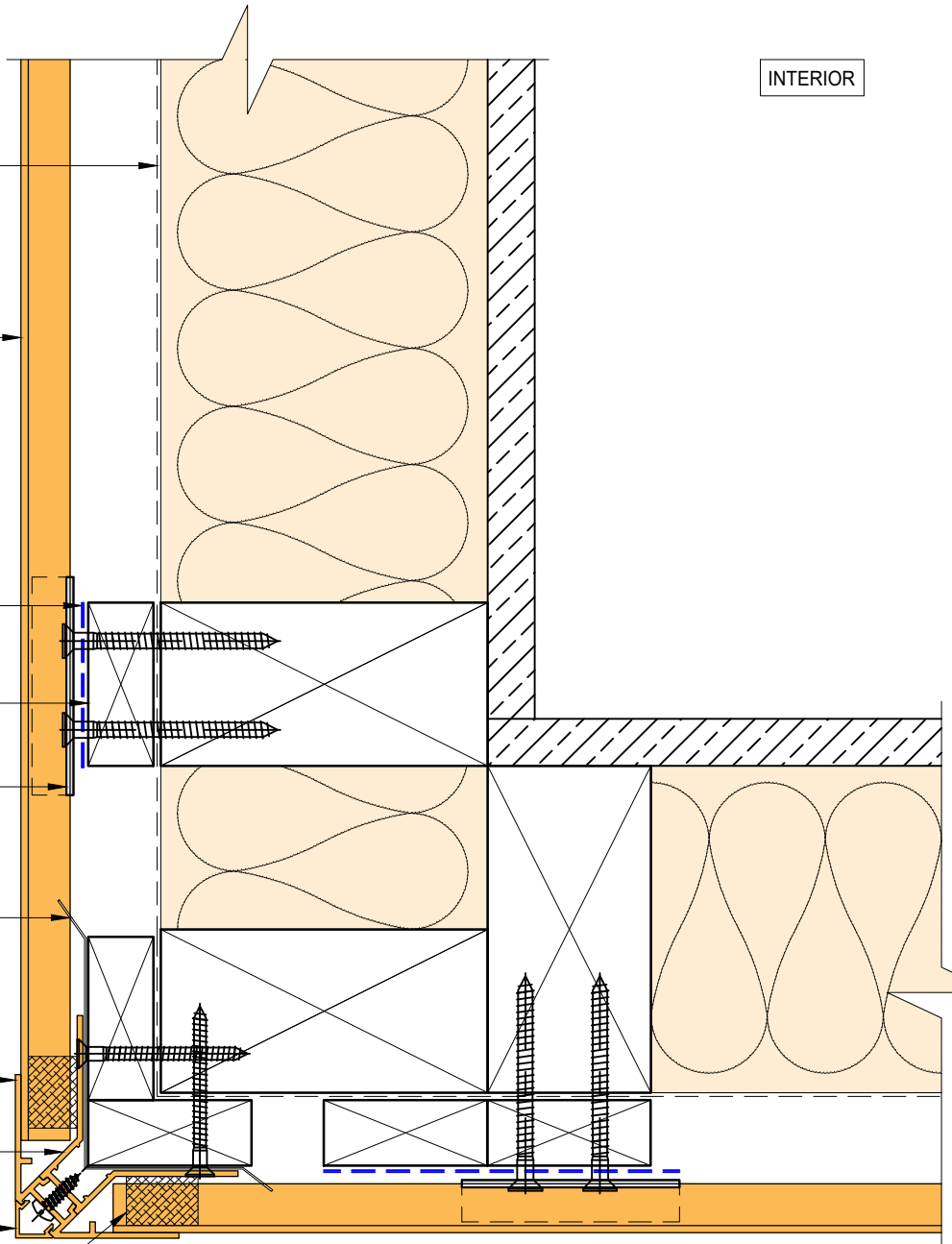
DPC flashing barrier down to Archimax starter

Archimax AM 019 internal/external corner part A ⑦

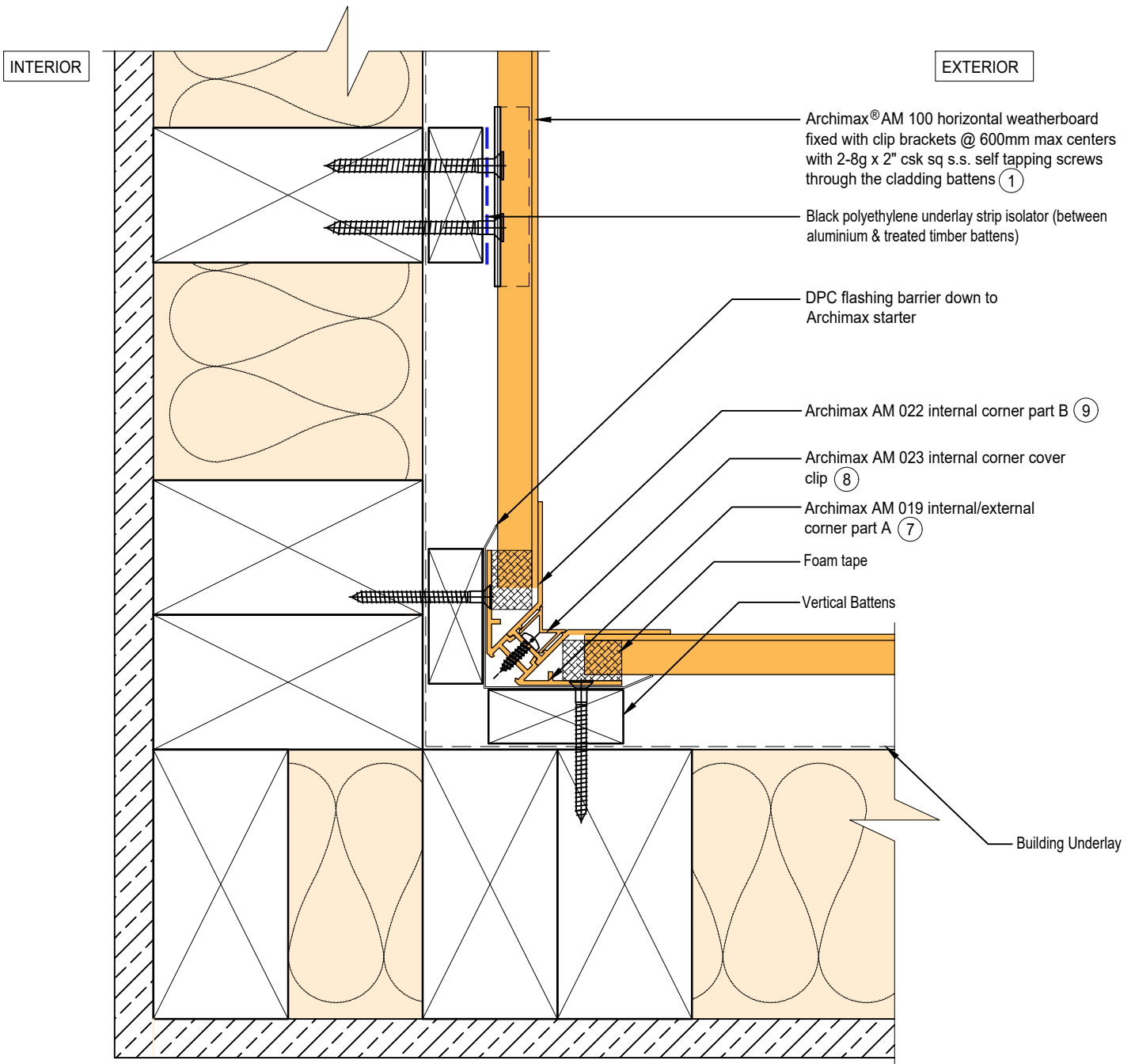
Archimax AM 022 internal corner part B ⑨


Archimax AM 020 external corner cover clip ⑪

Foam Tape



BRANZ Appraised
Appraisal No. 1173 [2021]



| | | | |
|--|---|---|--|
|  ARCHIMAX ALUMINIUM CLADDING SYSTEM <i>Creating more durable building envelopes</i> www.archimax.co.nz | System AM 100 - HORIZONTAL WEATHERBOARD | Detail ARCHIMAX® INTERNAL CORNER DETAIL | Drawing No. Rev. AM-INT-H5 D |
| | <small>This drawing is the copyright of Archimax Limited. Modification of details for job specification requirements must be approved by Archimax Ltd. The building designer is ultimately responsible to ensure all building work is designed and constructed according to building code requirements, best code of practice industry guidelines. All components must be supplied by Archimax. Archimax reserves the right to alter or upgrade details at any time without prior notice.</small> | | Scale Date 1:2 NOV23 |

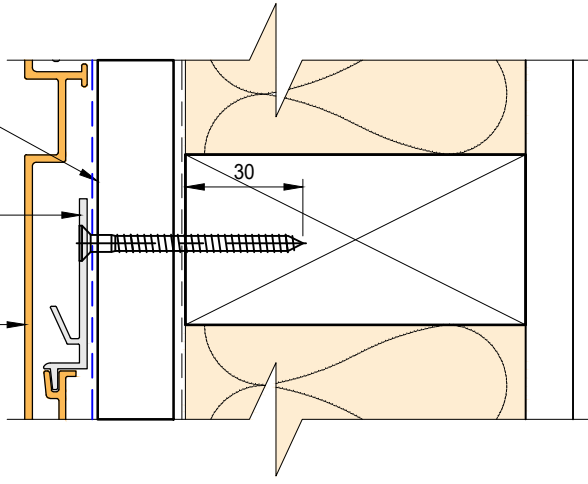
EXTERIOR

INTERIOR

Castellated timber batten (Vertical)

Archimax® clip bracket AM 029

① Archimax® AM 100 horizontal weatherboard fixed with clip brackets @ 600mm max centers with 2-8g x 2" csk sq s.s. self tapping screws through the cladding battens



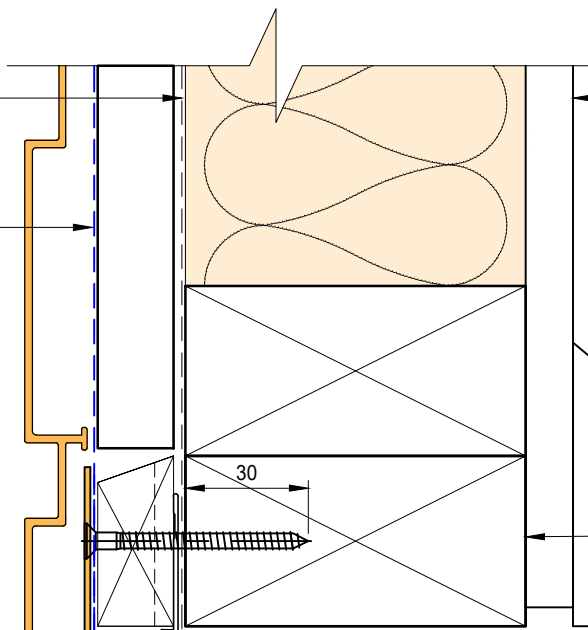
Building underlay

Black polyethylene underlay strip isolator (between aluminium & treated timber battens)

Interior lining

Cavity vent strip (By others)

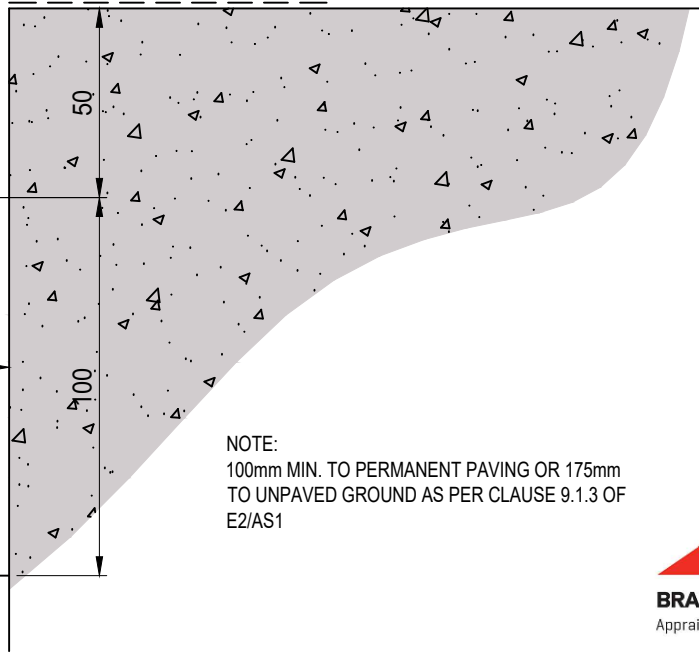
② Archimax® AM 009 board starter



Bottom plate over DPC

Concrete slab or brickwork (By others)

Finish ground level



NOTE:
100mm MIN. TO PERMANENT PAVING OR 175mm TO UNPAVED GROUND AS PER CLAUSE 9.1.3 OF E2/AS1



BRANZ Appraised
Appraisal No. 1173 [2021]



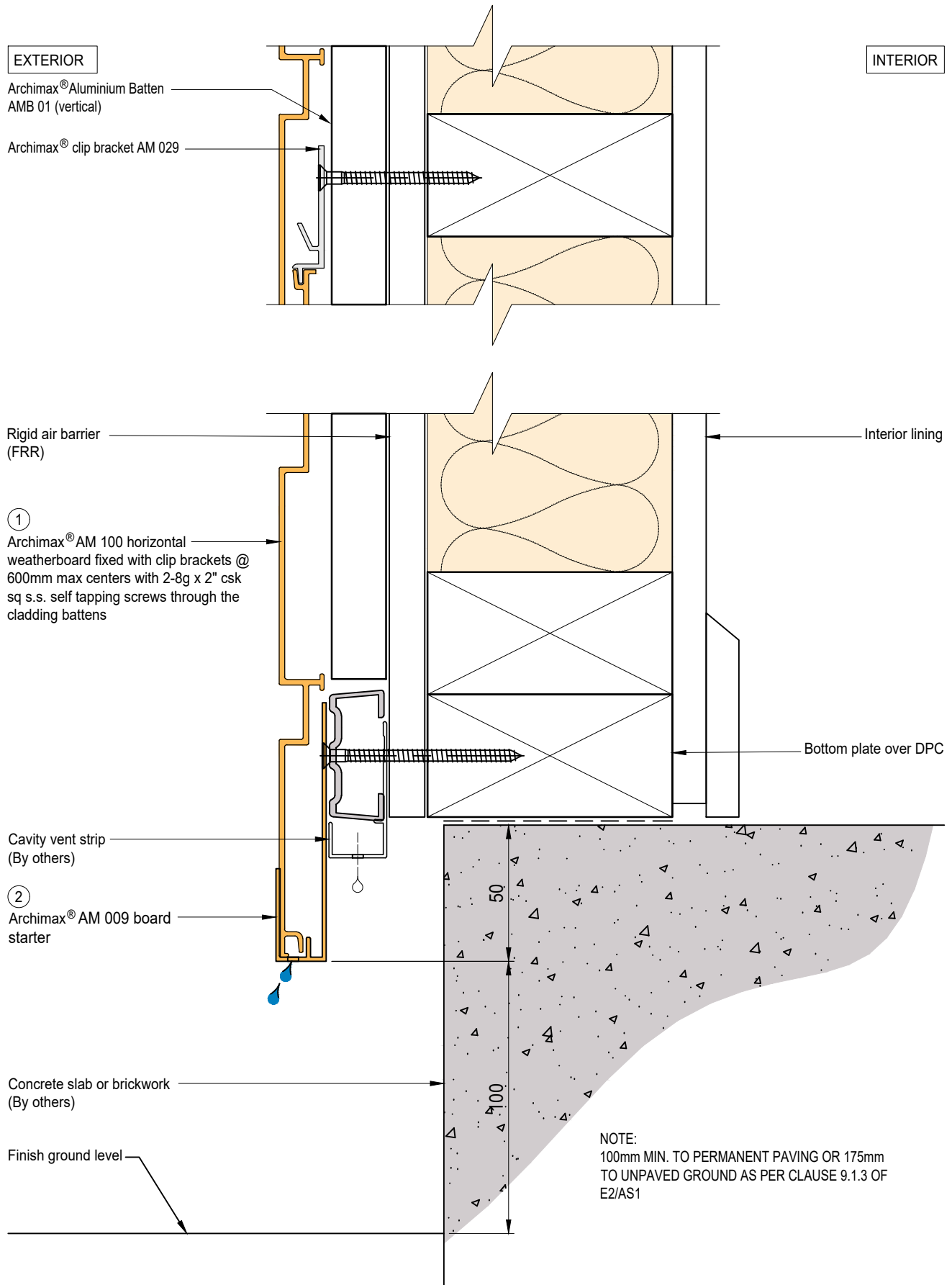
System
AM 100 - HORIZONTAL WEATHERBOARD

Detail
ARCHIMAX® CONCRETE FLOOR BOARD STARTER DETAIL - TIMBER

Drawing No. Rev.
AM-CBS-H6.1 D

This drawing is the copyright of Archimax Limited. Modification of details for job specification requirements must be approved by Archimax Ltd. The building designer is ultimately responsible to ensure all building work is designed and constructed according to building code requirements, best code of practice industry guidelines. All components must be supplied by Archimax. Archimax reserves the right to alter or upgrade details at any time without prior notice.

Scale Date
1:2 NOV23



EXTERIOR

INTERIOR

Building underlay

Archimax® AM 100 horizontal weatherboard fixed with clip brackets @ 600mm max centers with 2-8g x 2" csk sq s.s. self tapping screws through the cladding battens ①

Vertical battens

Black polyethylene underlay strip isolator (between aluminium & treated timber battens)

Flexible flashing tape

Cavity vent strip

Archimax AM 009 board starter ②

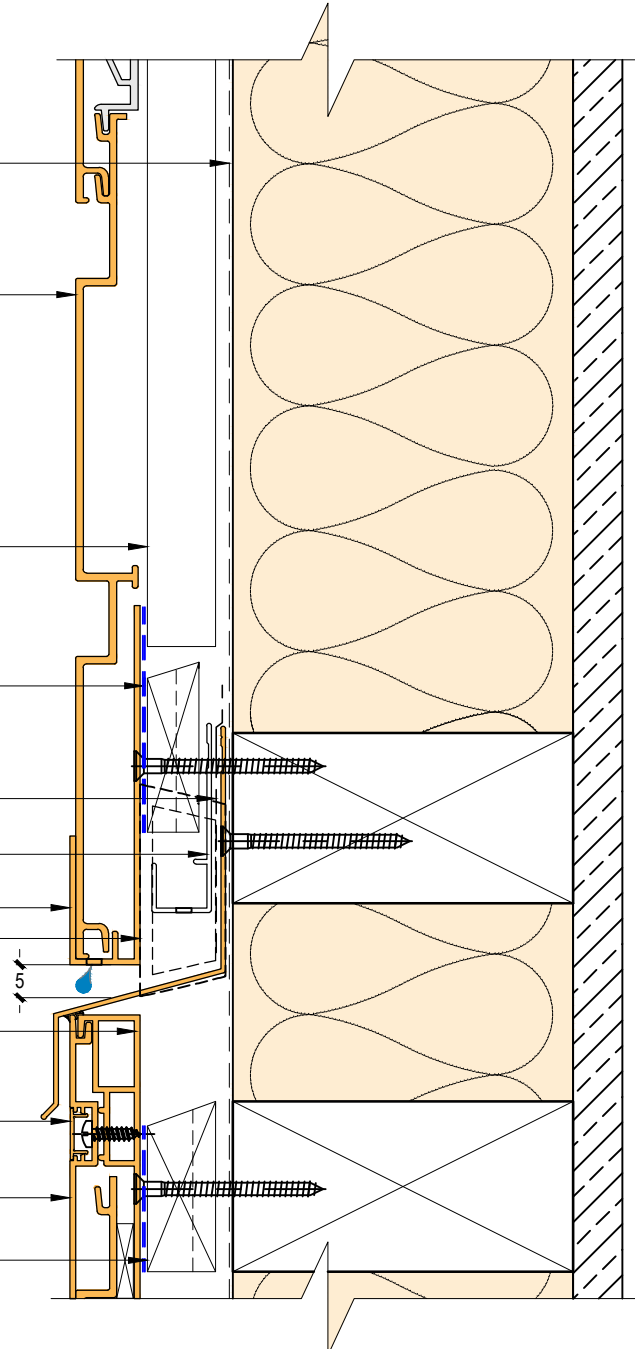
Inter-Storey flashing stop ends

Archimax® AM 018 end capping cover part B ③

Archimax® AM 016 capping cover clip ④

Archimax® AM 017 end capping cover part A ⑤

Horizontal battens



NOTE:
STOP ENDS TO BE INSTALLED AT INTER-STOREY FLASHING ENDS



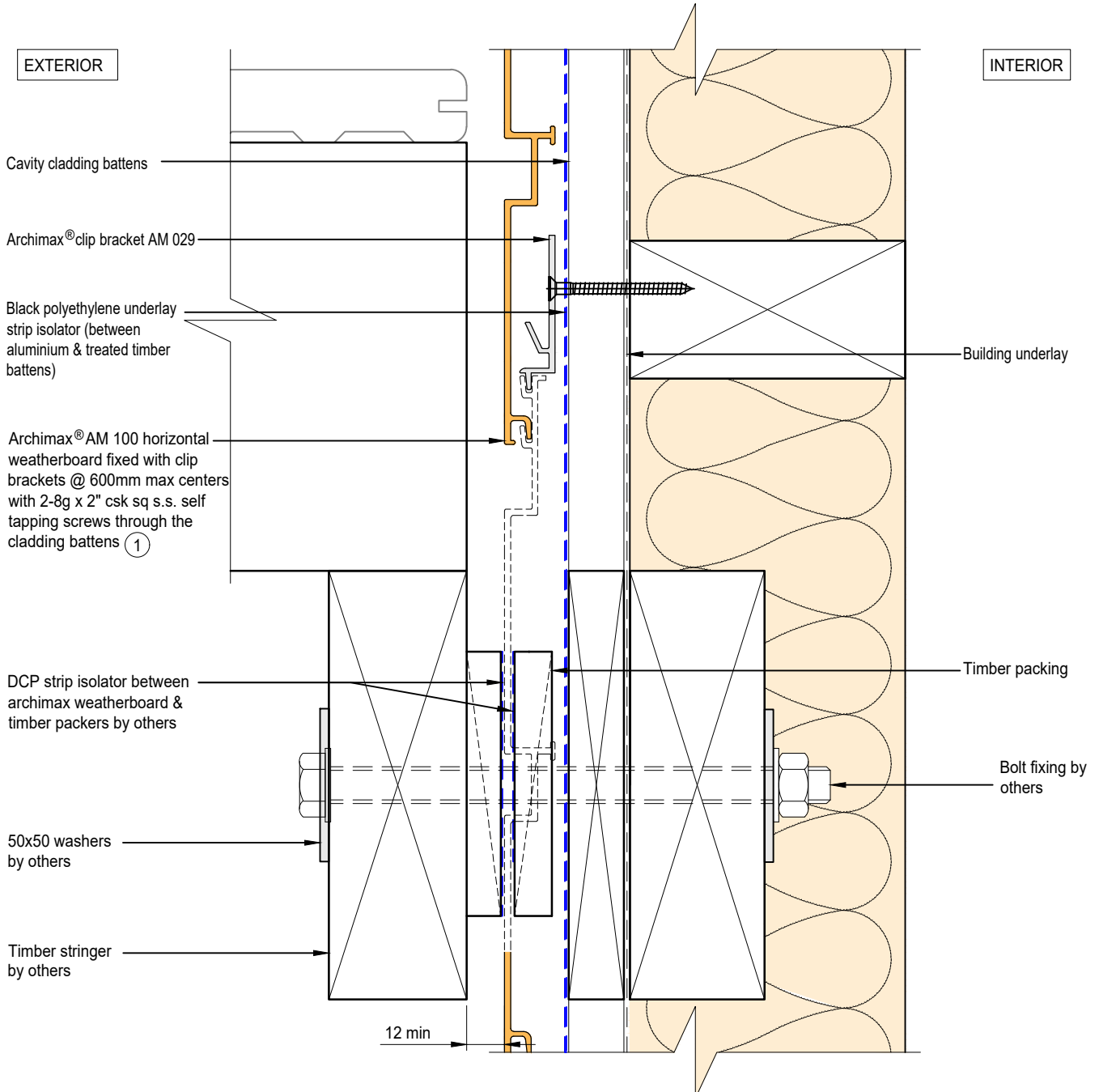
System
AM 100 - HORIZONTAL WEATHERBOARD

Detail
ARCHIMAX® HORIZONTAL JOINT DETAIL

Drawing No. Rev.
AM-HJ-H7 D

This drawing is the copyright of Archimax Limited. Modification of details for job specification requirements must be approved by Archimax Ltd. The building designer is ultimately responsible to ensure all building work is designed and constructed according to building code requirements, best code of practice industry guidelines. All components must be supplied by Archimax. Archimax reserves the right to alter or upgrade details at any time without prior notice.

Scale Date
1:2 NOV23




ARCHIMAX
 ALUMINIUM CLADDING SYSTEM
Creating more durable building envelopes
 www.archimax.co.nz

System
 AM 100 - HORIZONTAL WEATHERBOARD

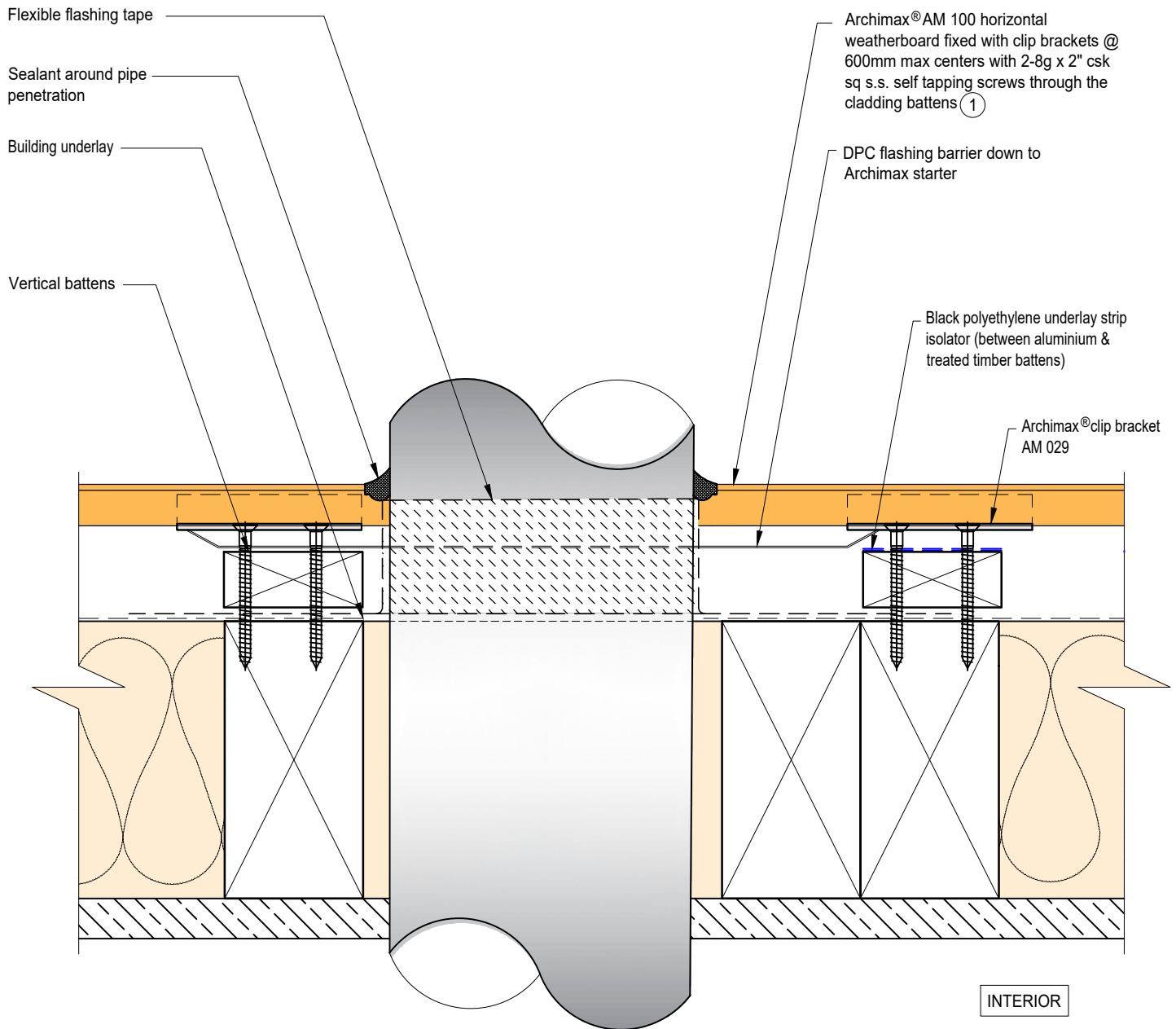
Detail
 ARCHIMAX® DECK JUNCTION DETAIL

Drawing No. Rev.
 AM-DJ-H8 D

This drawing is the copyright of Archimax Limited. Modification of details for job specification requirements must be approved by Archimax Ltd. The building designer is ultimately responsible to ensure all building work is designed and constructed according to building code requirements, best code of practice industry guidelines. All components must be supplied by Archimax. Archimax reserves the right to alter or upgrade details at any time without prior notice.

Scale Date
 1:2 NOV23

EXTERIOR



INTERIOR



BRANZ Appraised
Appraisal No. 1173 [2021]

EXTERIOR

INTERIOR

Archimax® AM 100 horizontal weatherboard fixed with clip brackets @ 600mm max centers with 2-8g x 2" csk sq s.s. self tapping screws through the cladding battens ①

Archimax® clip bracket AM 029

Vertical battens

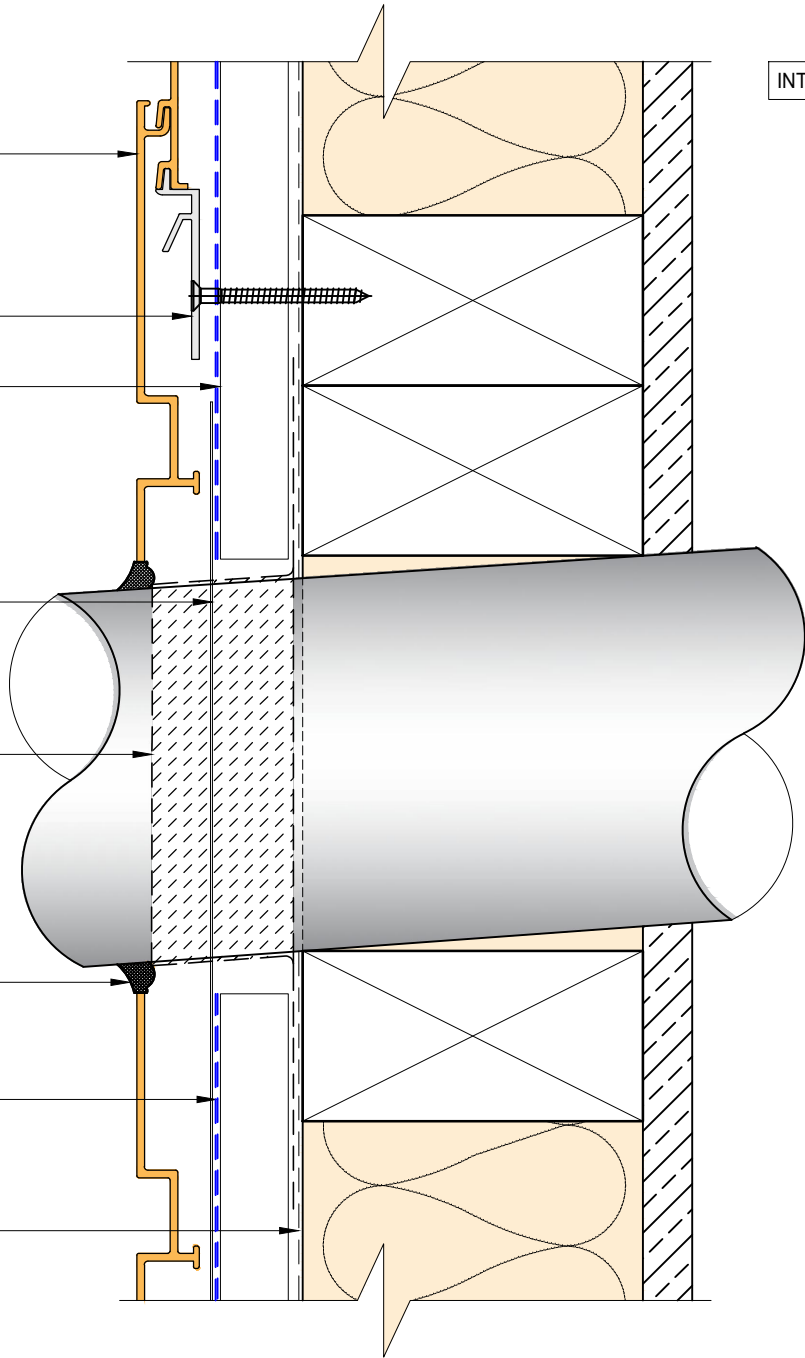
DPC flashing barrier down to Archimax starter

Flexible flashing tape

Sealant around pipe penetration

Black polyethylene underlay strip isolator (between aluminium & treated timber battens)

Building underlay



BRANZ Appraised
Appraisal No. 1173 [2021]

EXTERIOR

INTERIOR

Compressible foam tape

Archimax® AM 018 end capping cover part B (3)

Archimax® AM 016 capping cover clip (4)

Archimax® AM 017 end capping cover part A (5)

Horizontal battens

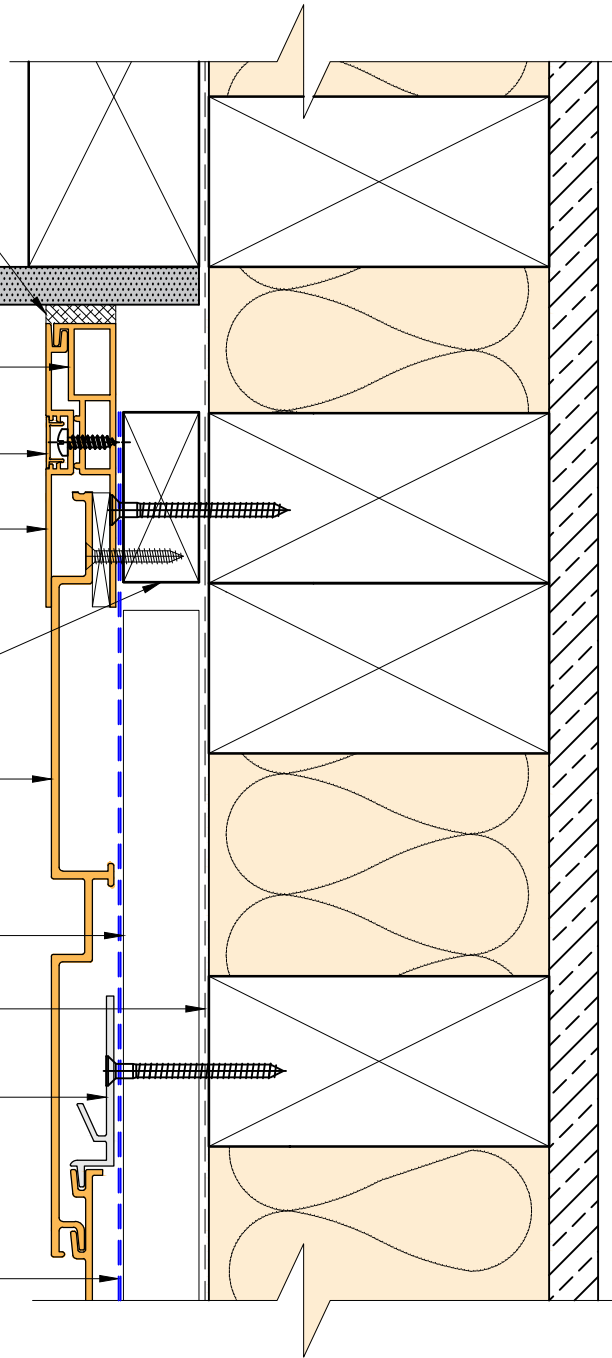
Archimax® AM 100 horizontal weatherboard fixed with clip brackets @ 600mm max centers with 2-8g x 2" csk sq s.s. self tapping screws through the cladding battens (1)

Vertical battens

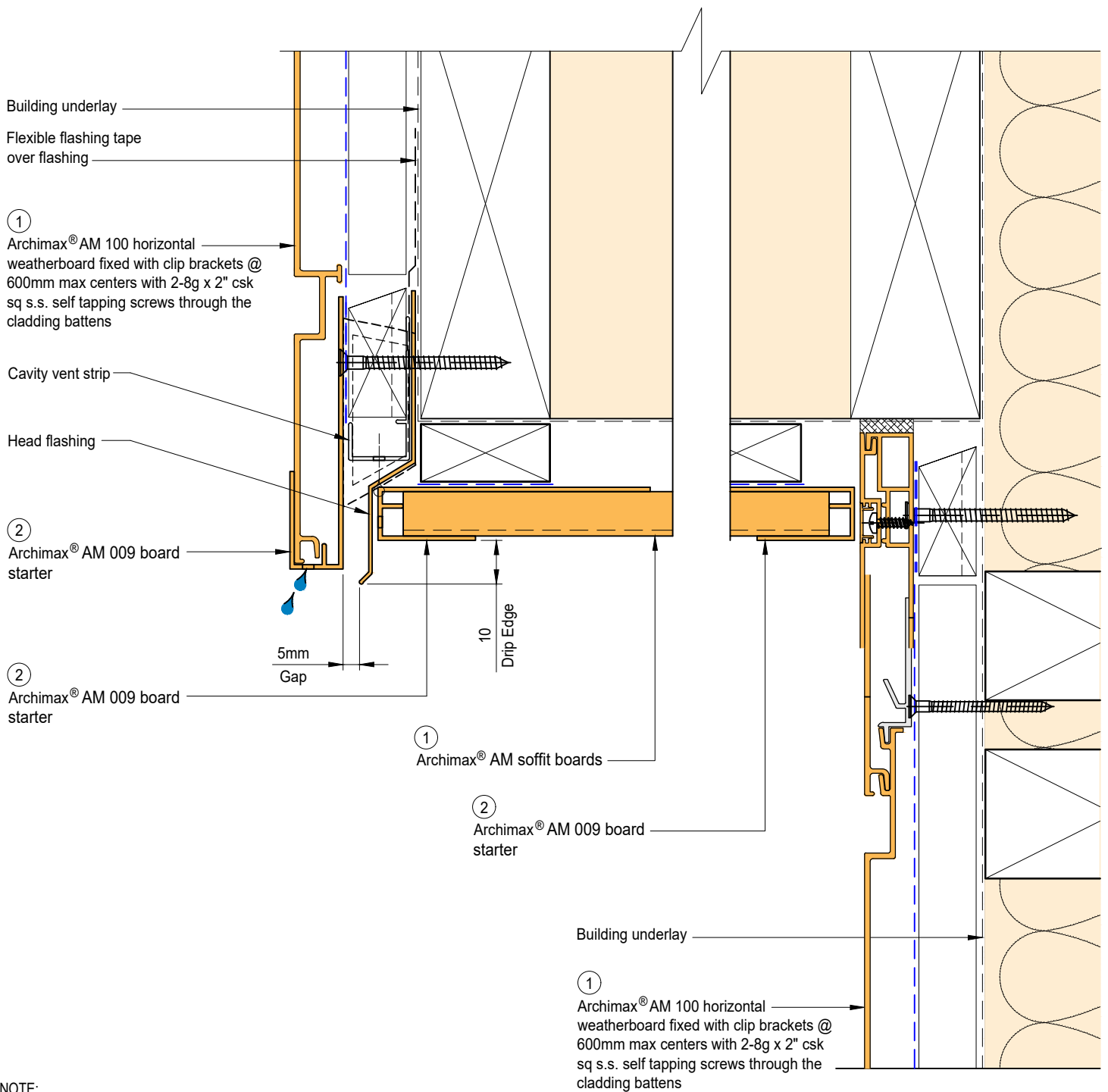
Building underlay

Archimax® clip bracket AM 029

Black polyethylene underlay strip isolator (between aluminium & treated timber battens)




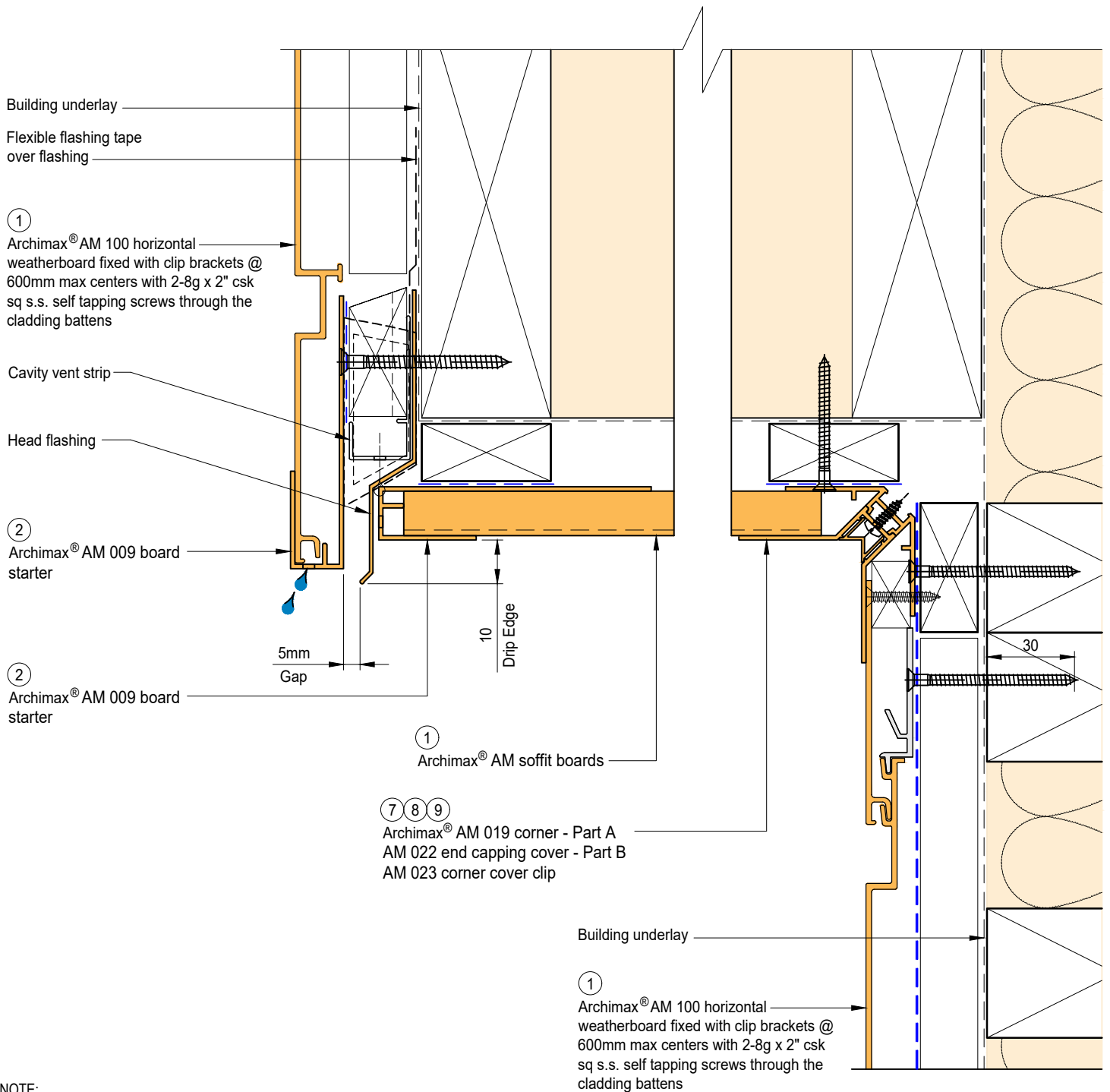
BRANZ Appraised
Appraisal No. 1173 [2021]



NOTE:
STOP ENDS TO BE INSTALLED AT FLASHING ENDS




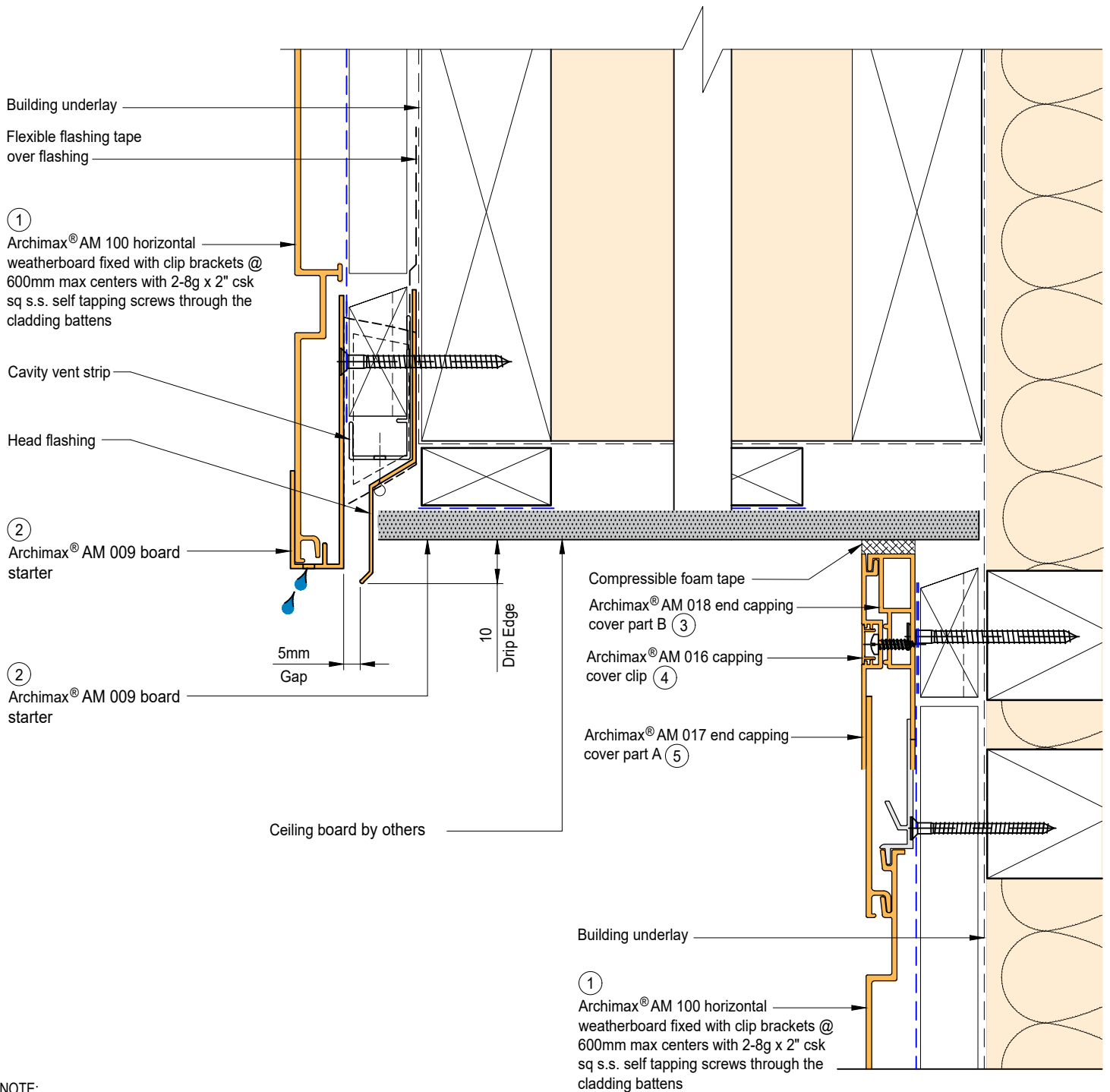
| | | | | | | |
|--|---|--|--|-------|------|-----|
|  <p>ARCHIMAX ALUMINIUM CLADDING SYSTEM <i>Creating more durable building envelopes</i> www.archimax.co.nz</p> | <p>System AM 100 - HORIZONTAL WEATHERBOARD</p> | <p>Detail ARCHIMAX® FASCIA, SOFFIT & WALL DETAIL</p> | <p>Drawing No. Rev. AM-SO-H11.1 D</p> | | | |
| | <p>This drawing is the copyright of Archimax Limited. Modification of details for job specification requirements must be approved by Archimax Ltd. The building designer is ultimately responsible to ensure all building work is designed and constructed according to building code requirements, best code of practice industry guidelines. All components must be supplied by Archimax. Archimax reserves the right to alter or upgrade details at any time without prior notice.</p> | | <table border="1"> <tr> <td>Scale</td> <td>Date</td> </tr> <tr> <td>1:2</td> <td>NOV23</td> </tr> </table> | Scale | Date | 1:2 |
| Scale | Date | | | | | |
| 1:2 | NOV23 | | | | | |



NOTE:
STOP ENDS TO BE INSTALLED AT FLASHING ENDS




| | | | |
|--|---|--|---|
|  <p>ARCHIMAX ALUMINIUM CLADDING SYSTEM Creating more durable building envelopes www.archimax.co.nz</p> | <p>System AM 100 - HORIZONTAL WEATHERBOARD</p> | <p>Detail ARCHIMAX® FACIA, SOFFIT & WALL DETAIL (90° SOFFIT / WALL) DETAIL</p> | <p>Drawing No. Rev. AM-SO-H11.2 D</p> |
| | <p>This drawing is the copyright of Archimax Limited. Modification of details for job specification requirements must be approved by Archimax Ltd. The building designer is ultimately responsible to ensure all building work is designed and constructed according to building code requirements, best code of practice industry guidelines. All components must be supplied by Archimax. Archimax reserves the right to alter or upgrade details at any time without prior notice.</p> | | <p>Scale Date 1:2 NOV23</p> |



NOTE:
STOP ENDS TO BE INSTALLED AT FLASHING ENDS



| | | | |
|--|---|--|---|
|  <p>ARCHIMAX ALUMINIUM CLADDING SYSTEM <i>Creating more durable building envelopes</i> www.archimax.co.nz</p> | <p>System AM 100 - HORIZONTAL WEATHERBOARD</p> | <p>Detail ARCHIMAX® FASCIA, BOARD SOFFIT & WALL DETAIL</p> | <p>Drawing No. Rev. AM-SO-H11.3 D</p> |
| | <p>This drawing is the copyright of Archimax Limited. Modification of details for job specification requirements must be approved by Archimax Ltd. The building designer is ultimately responsible to ensure all building work is designed and constructed according to building code requirements, best code of practice industry guidelines. All components must be supplied by Archimax. Archimax reserves the right to alter or upgrade details at any time without prior notice.</p> | | <p>Scale Date 1:2 NOV23</p> |

EXTERIOR

Selected roofing

Flashing & sealed by others

Archimax® AM 018 end capping cover part B (3)

Archimax® AM 016 capping cover clip (4)

Archimax® AM 017 end capping cover part A (5)

Countersunk screw (if required)

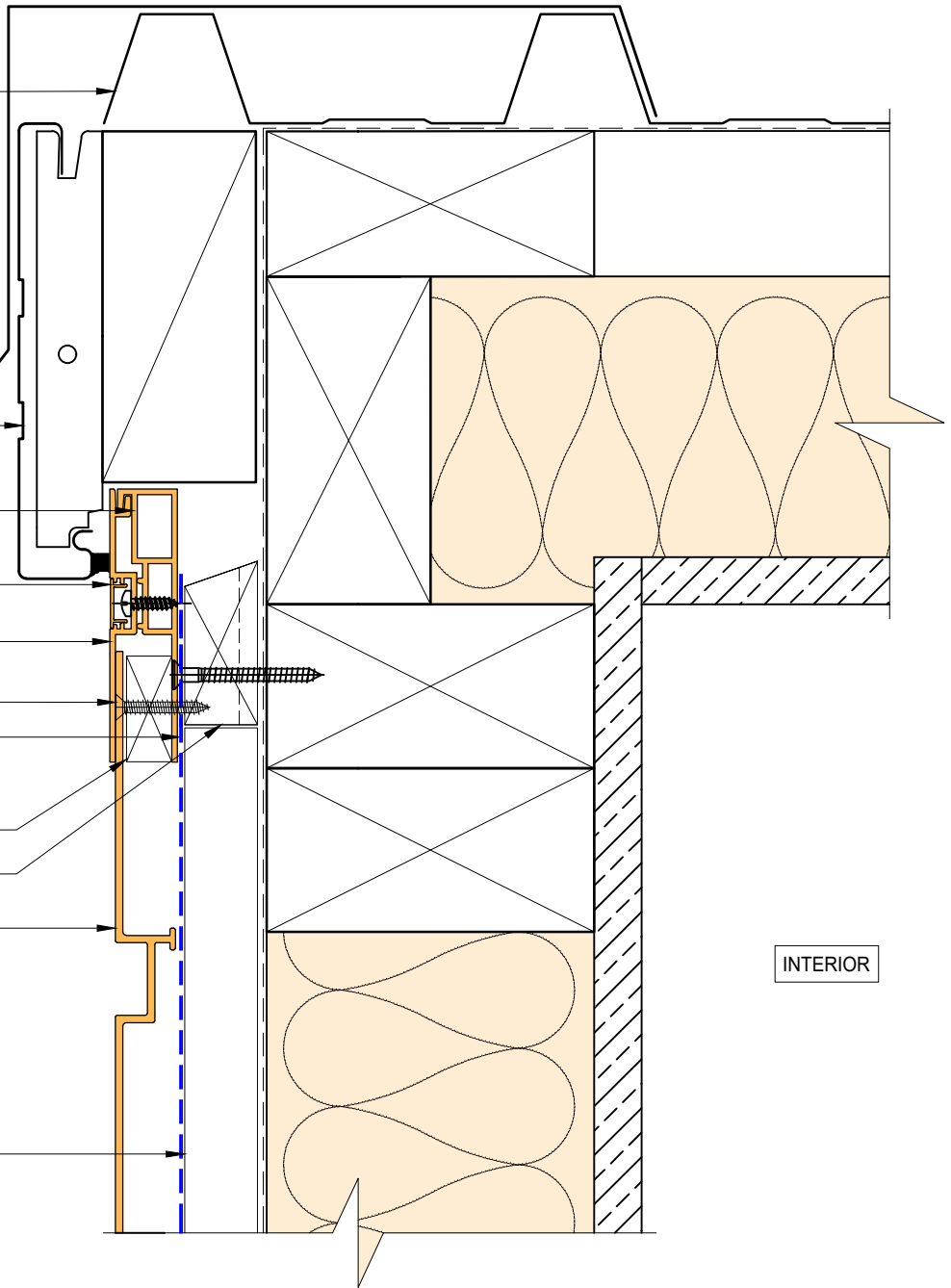
Black polyethylene underlay strip isolator (between aluminium & treated timber battens)

Solid packer

Horizontal battens

Archimax® AM 100 horizontal weatherboard fixed with clip brackets @ 600mm max centers with 2-8g x 2" csk sq s.s. self tapping screws through the cladding battens (1)

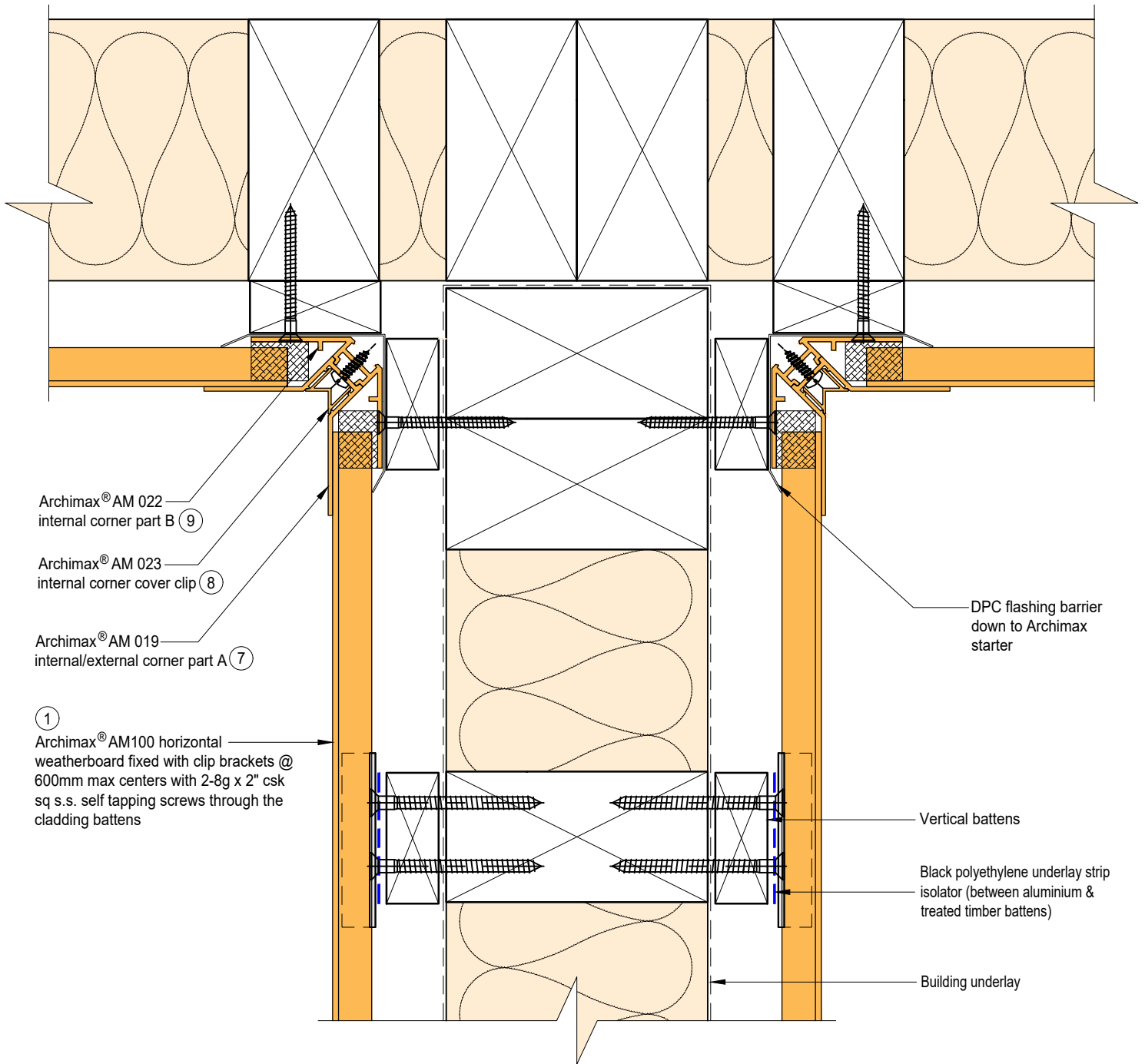
Vertical battens




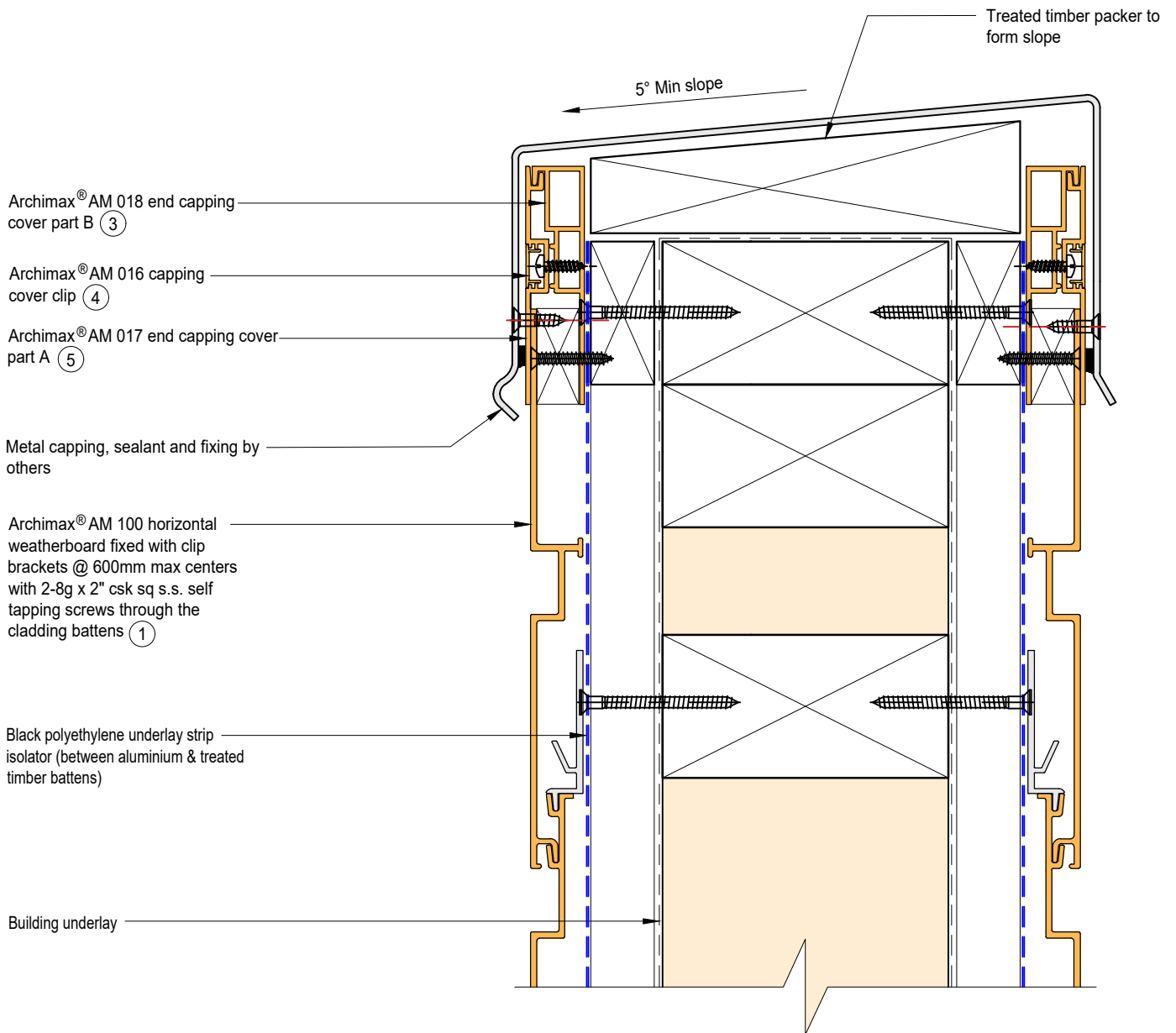
INTERIOR

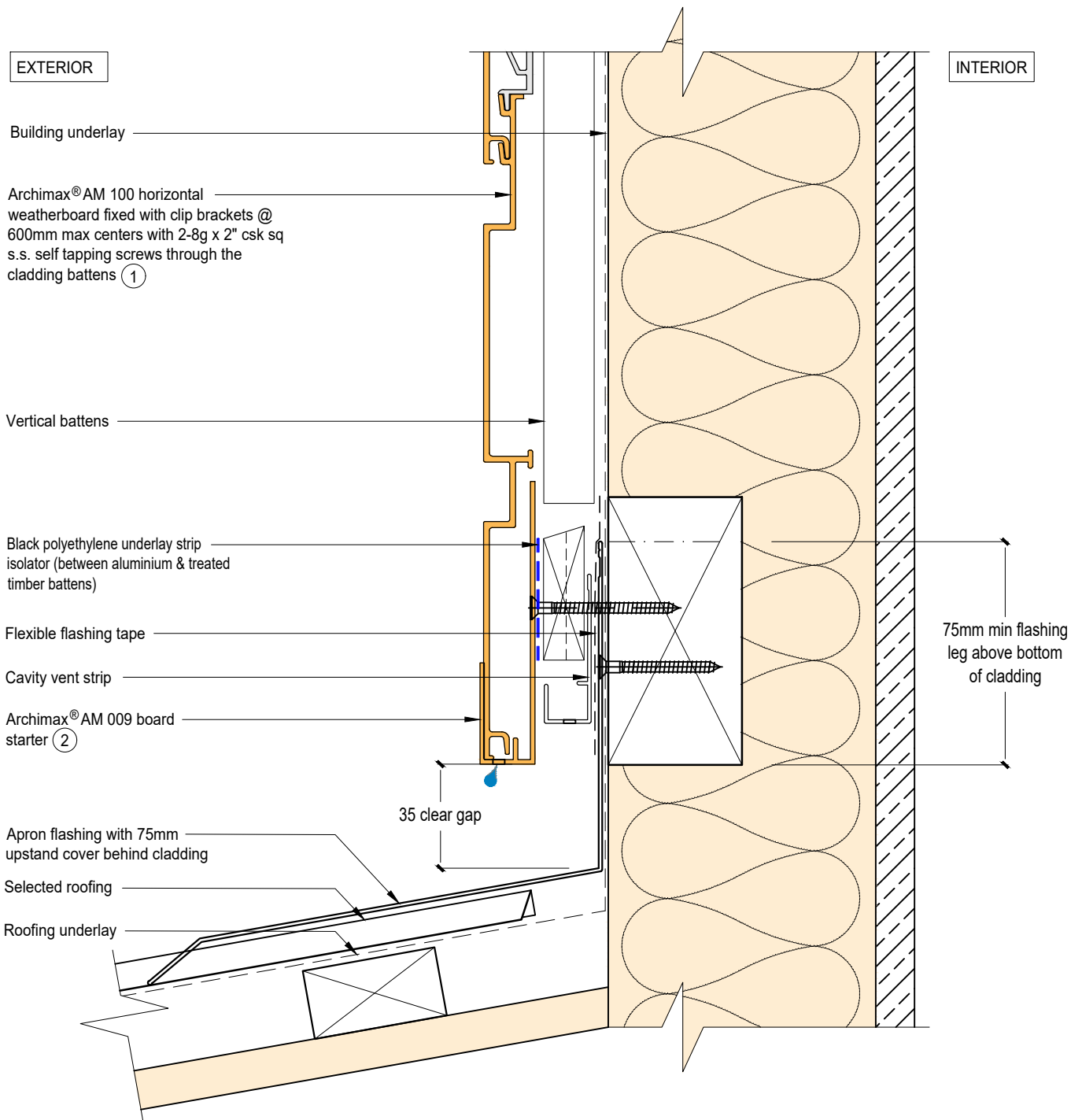


BRANZ Appraised
Appraisal No. 1173 [2021]



| | | | |
|--|---|---|---|
|  <p>ARCHIMAX ALUMINIUM CLADDING SYSTEM <i>Creating more durable building envelopes</i> www.archimax.co.nz</p> | <p>System AM 100 - HORIZONTAL WEATHERBOARD</p> | <p>Detail ARCHIMAX® INTERNAL CORNER JUNCTION DETAIL</p> | <p>Drawing No. Rev. AM-BJ-H13 D</p> |
| | <p>This drawing is the copyright of Archimax Limited. Modification of details for job specification requirements must be approved by Archimax Ltd. The building designer is ultimately responsible to ensure all building work is designed and constructed according to building code requirements, best code of practice industry guidelines. All components must be supplied by Archimax. Archimax reserves the right to alter or upgrade details at any time without prior notice.</p> | | <p>Scale Date 1:2 NOV23</p> |






ARCHIMAX
 ALUMINIUM CLADDING SYSTEM
Creating more durable building envelopes
www.archimax.co.nz

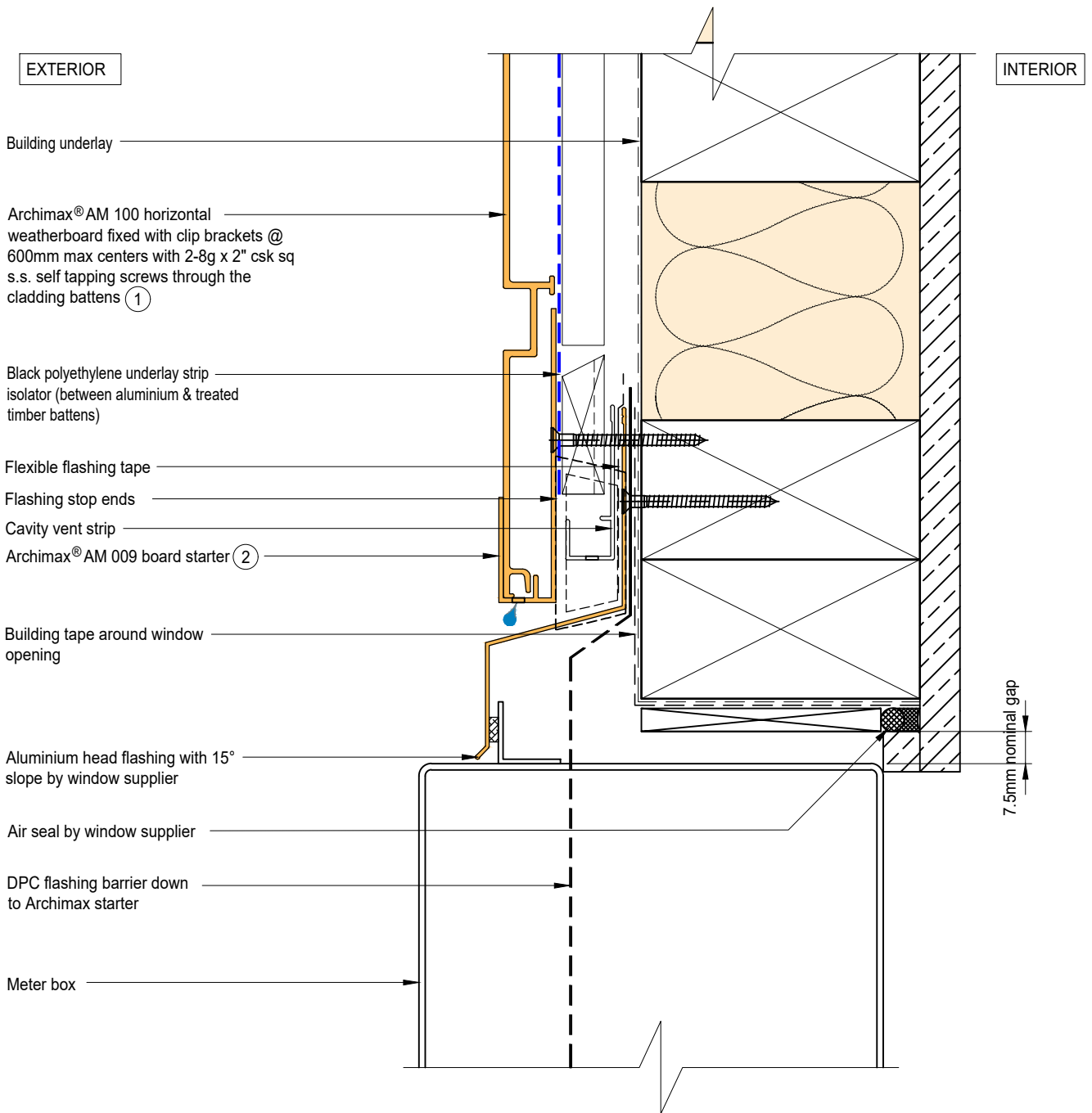
System
 AM 100 - HORIZONTAL
 WEATHERBOARD

Detail
 ARCHIMAX® LOWER ROOF WALL
 JUNCTION DETAIL

Drawing No. Rev.
 AM-RW-H15 D


This drawing is the copyright of Archimax Limited. Modification of details for job specification requirements must be approved by Archimax Ltd. The building designer is ultimately responsible to ensure all building work is designed and constructed according to building code requirements, best code of practice industry guidelines. All components must be supplied by Archimax. Archimax reserves the right to alter or upgrade details at any time without prior notice.

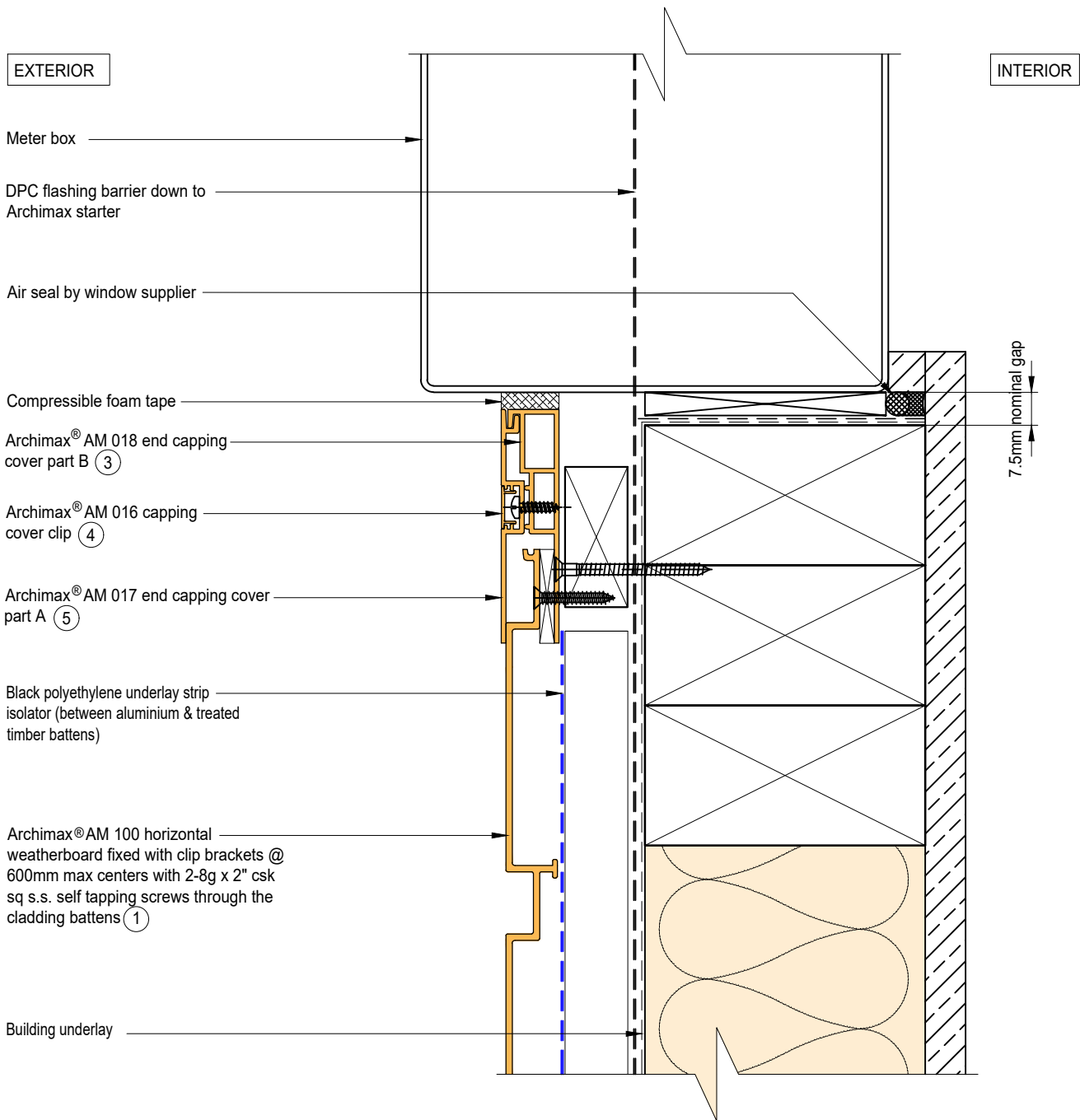
Scale Date
 1:2 NOV23




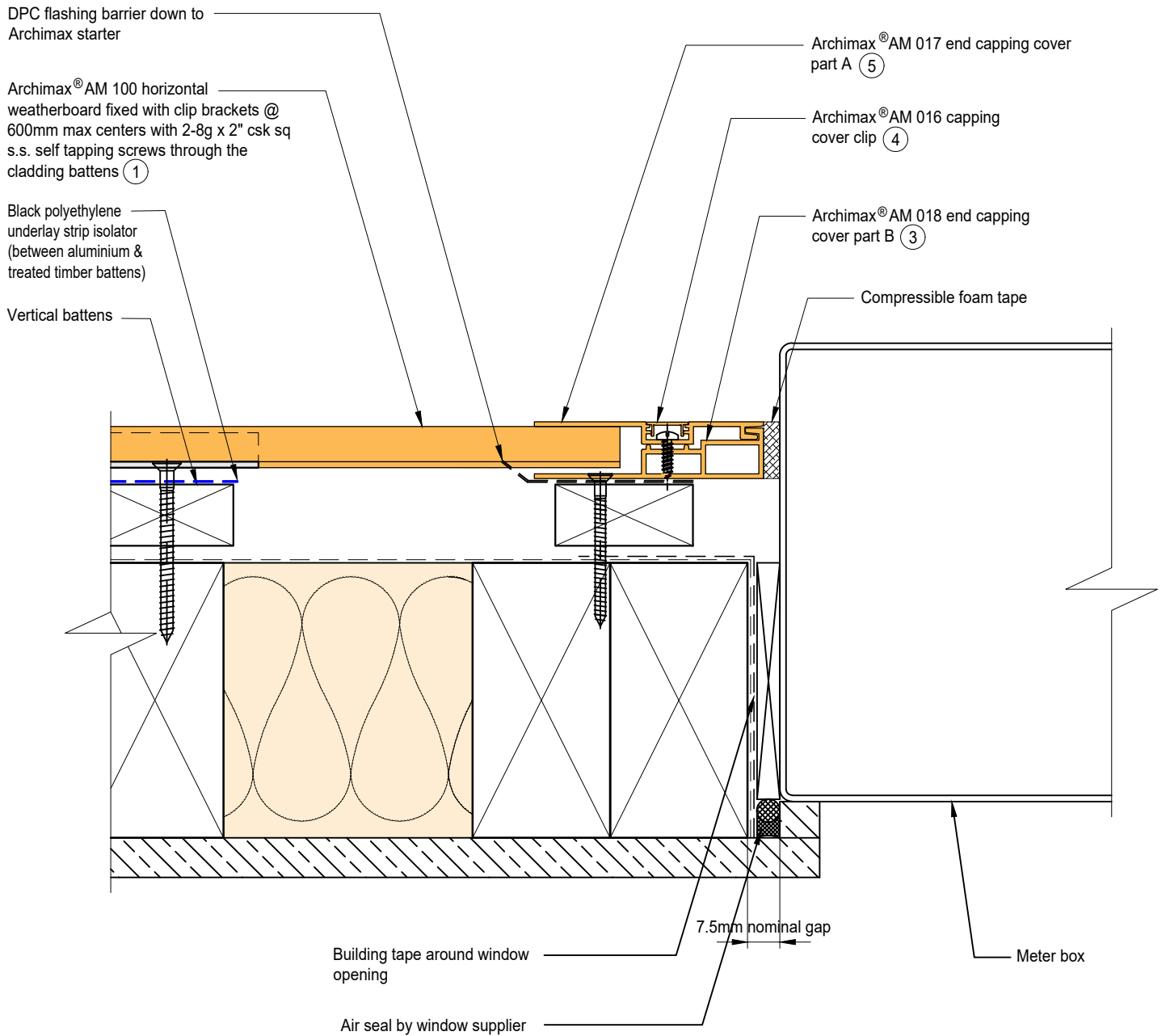
NOTE:
STOP ENDS TO BE INSTALLED AT FLASHING ENDS




| | | | | | | |
|--|---|--|--|-------|------|-----|
|  <p>ARCHIMAX ALUMINIUM CLADDING SYSTEM Creating more durable building envelopes www.archimax.co.nz</p> | System AM 100 - HORIZONTAL WEATHERBOARD | Detail ARCHIMAX® METER BOX HEAD DETAIL | Drawing No. Rev. AM-MB-H16 D | | | |
| | <p>This drawing is the copyright of Archimax Limited. Modification of details for job specification requirements must be approved by Archimax Ltd. The building designer is ultimately responsible to ensure all building work is designed and constructed according to building code requirements, best code of practice industry guidelines. All components must be supplied by Archimax. Archimax reserves the right to alter or upgrade details at any time without prior notice.</p> | | <table border="1"> <tr> <td>Scale</td> <td>Date</td> </tr> <tr> <td>1:2</td> <td>NOV23</td> </tr> </table> | Scale | Date | 1:2 |
| Scale | Date | | | | | |
| 1:2 | NOV23 | | | | | |

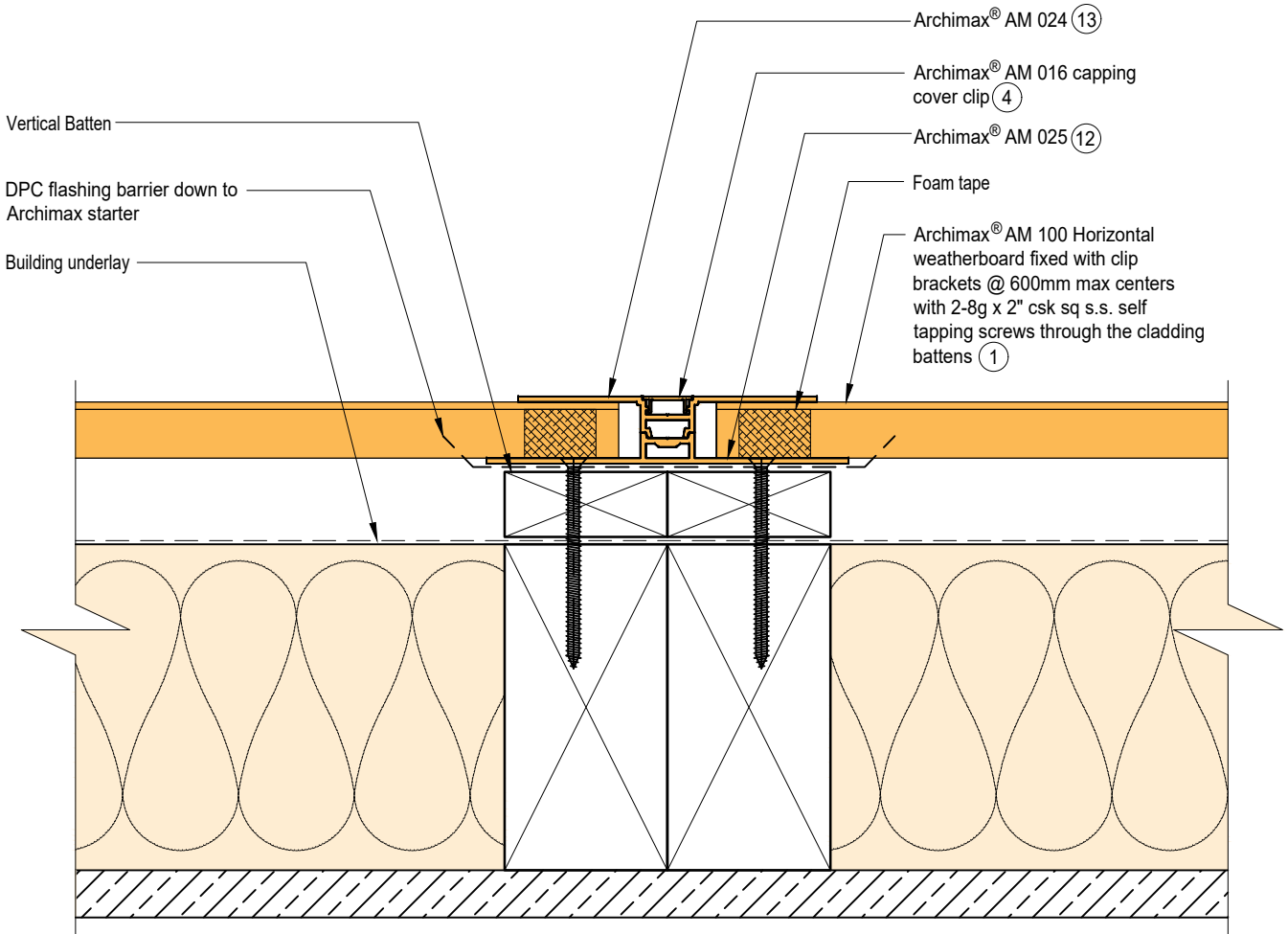


| | | | |
|--|---|---|---|
|  <p>ARCHIMAX ALUMINIUM CLADDING SYSTEM <i>Creating more durable building envelopes</i> www.archimax.co.nz</p> | <p>System AM 100 - HORIZONTAL WEATHERBOARD</p> | <p>Detail ARCHIMAX® METER BOX SILL DETAIL</p> | <p>Drawing No. Rev. AM-MB-H17 D</p> |
| | <p>This drawing is the copyright of Archimax Limited. Modification of details for job specification requirements must be approved by Archimax Ltd. The building designer is ultimately responsible to ensure all building work is designed and constructed according to building code requirements, best code of practice industry guidelines. All components must be supplied by Archimax. Archimax reserves the right to alter or upgrade details at any time without prior notice.</p> | | <p>Scale Date 1:2 NOV23</p> |



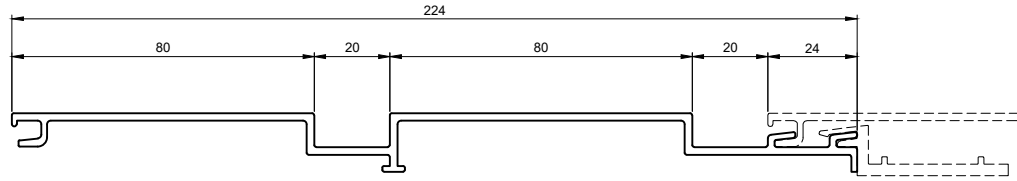
| | | | |
|--|---|---|---|
|  <p>ARCHIMAX ALUMINIUM CLADDING SYSTEM <i>Creating more durable building envelopes</i> www.archimax.co.nz</p> | <p>System AM 100 - HORIZONTAL WEATHERBOARD</p> | <p>Detail ARCHIMAX® METER BOX JAMB DETAIL</p> | <p>Drawing No. Rev. AM-MB-H18 D</p> |
| | <p>This drawing is the copyright of Archimax Limited. Modification of details for job specification requirements must be approved by Archimax Ltd. The building designer is ultimately responsible to ensure all building work is designed and constructed according to building code requirements, best code of practice industry guidelines. All components must be supplied by Archimax. Archimax reserves the right to alter or upgrade details at any time without prior notice.</p> | | <p>Scale Date 1:2 NOV23</p> |

EXTERIOR



INTERIOR





①

AM 100 Archimax Horizontal / Vertical Weatherboard

| | | | | |
|---------------------------------|----------------------------|--|---------------------------|--------------|
| <p>②</p> | <p>③</p> | <p>④</p> | <p>⑤</p> | <p>⑥</p> |
| AM 009 | AM 018 | AM 016 | AM 017 | AM 029 |
| Board Starter | End Capping Part B | Jointer / Jamb / Sill Capping Cover Clip | End Capping Part A | Clip Bracket |
| <p>⑨</p> | <p>⑧</p> | <p>⑨</p> | <p>⑪</p> | |
| AM 019 | AM 023 | AM 022 | AM 020 | |
| Internal/External Corner Part A | Internal Corner Cover Clip | Internal Corner Part B | External Cover Cover Clip | |



| | | | |
|--|--------------|---------------------------|---------------|
| System AM100 HORIZONTAL WEATHERBOARD | Detail -- | Drawing No. Rev. -- -- | |
| This drawing is the copyright of Archimax Limited. Modification of details for job specification requirements must be approved by Archimax Ltd. The building designer is ultimately responsible to ensure all building work is designed and constructed according to building code requirements, best code of practice industry guidelines. All components must be supplied by Archimax. Archimax reserves the right to alter or upgrade details at any time without prior notice. | | Scale 1:2 | Date NOV23 |