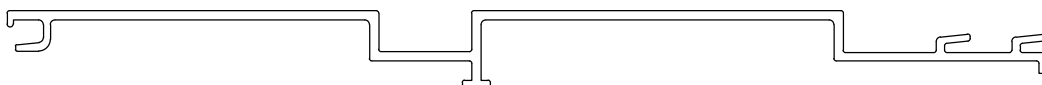


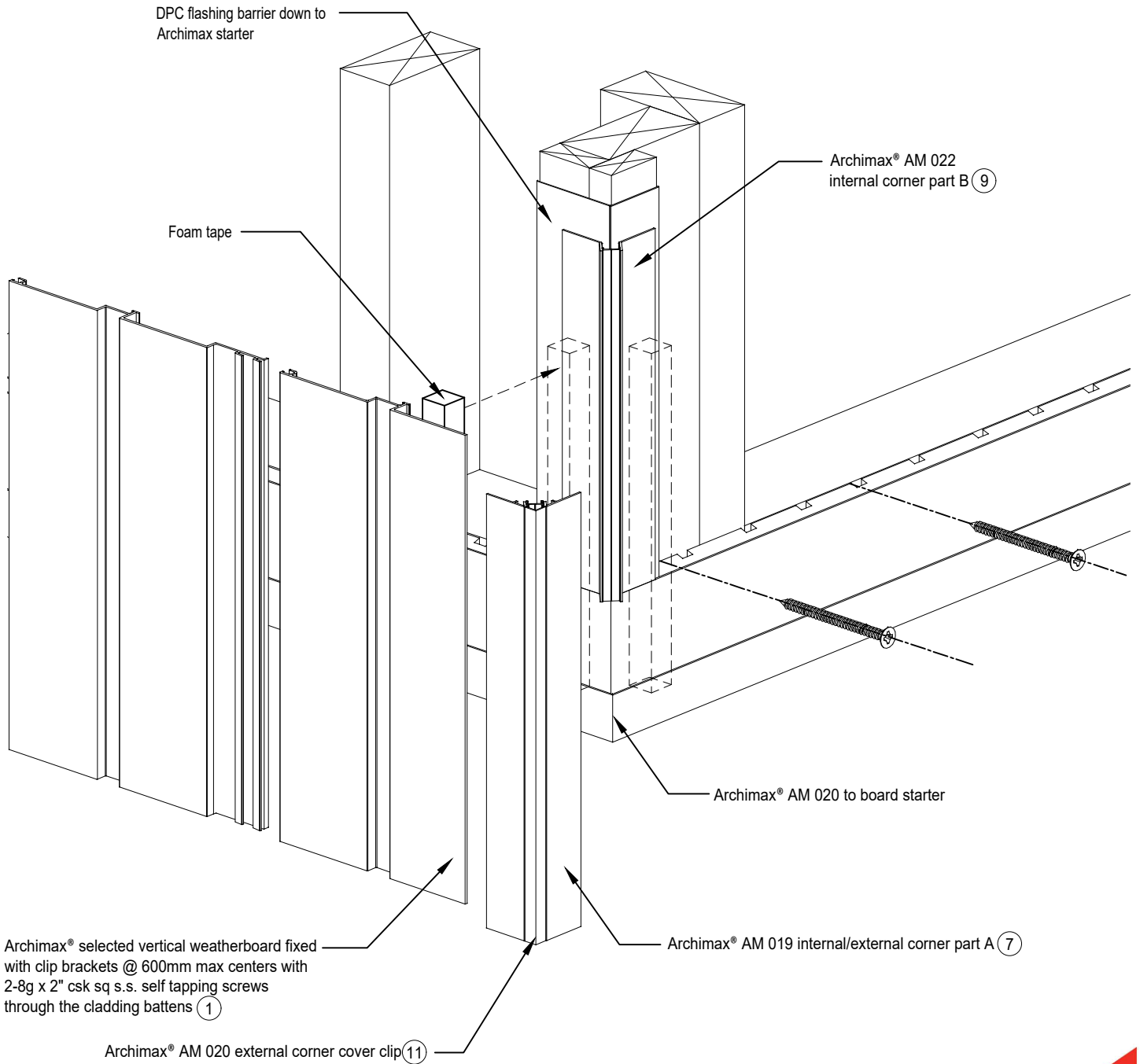


Archimax® Aluminium Cladding System
 AM100 Vertical Profile - Installation Details

Drawing No.	Rev	Description
AM-WH-V1	D	Archimax® Window Head Detail
AM-WS-V2.1	D	Archimax® Window Sill Detail
AM-WS-V2.2	D	Archimax® Window Sill Detail
AM-WJ-V3	D	Archimax® Window Jamb Detail
AM-EXT-V4	D	Archimax® External Corner Detail
AM-INT-V5	D	Archimax® Internal Corner Detail
AM-CBS-V6.1	D	Archimax® Concrete Floor Board Starter Detail - Timber
AM-CBS-V6.2	D	Archimax® Concrete Floor Board Starter Detail - Fire Wall
AM-HJ-V7	D	Archimax® Horizontal Joint Detail
AM-DJ-V8	D	Archimax® Deck Junction Detail
AM-PP-V9A	D	Archimax® Pipe Penetration Plan View Detail
AM-PP-V9B	D	Archimax® Pipe Penetration Section View Detail
AM-SO-V10	D	Archimax® Soffit Detail
AM-SO-V11.1	D	Archimax® Fascia, Soffit & Wall Detail
AM-SO-V11.2	D	Archimax® Fascia, Soffit & Wall Detail (90° Soffit/Wall)
AM-SO-V11.3	D	Archimax® Fascia, Board Soffit & Wall Detail
AM-SO-V12	D	Archimax® Non-Soffit Detail
AM-BJ-V13	D	Archimax® Internal Corner Junction Detail
AM-PAR-V14	D	Archimax® Parapet with Cavity Detail
AM-RW-V15	D	Archimax® Lower Roof Wall Junction Detail
AM-MB-V16	D	Archimax® Meter Box Head Detail
AM-MB-V17	D	Archimax® Meter Box Sill Detail
AM-MB-V18	D	Archimax® Meter Box Jamb Detail



AM100
 Coverage: 200mm



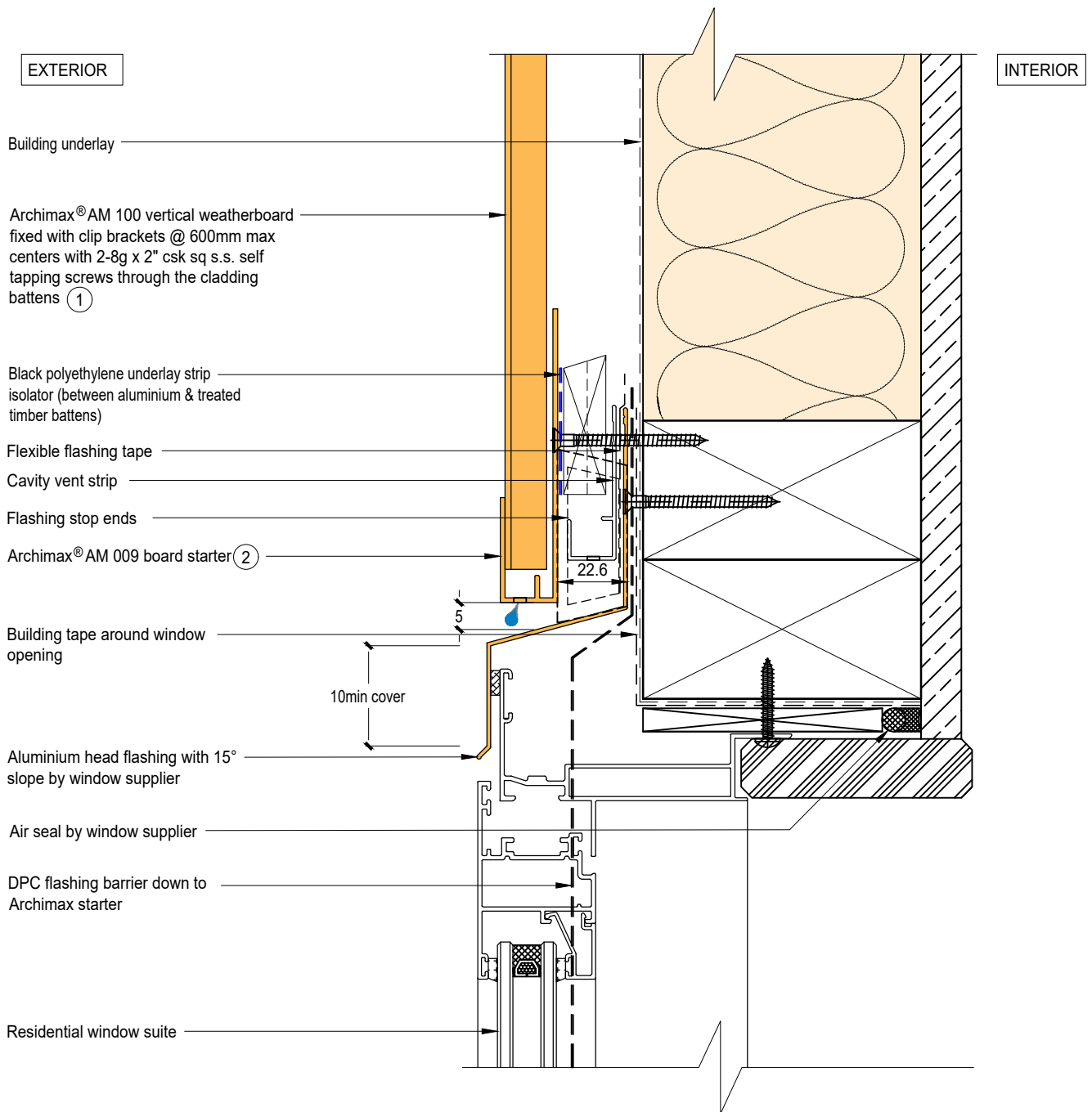

ARCHIMAX
ALUMINIUM CLADDING SYSTEM
Creating more durable building envelopes
www.archimax.co.nz

System
 ARCHIMAX®

This drawing is the copyright of Archimax Limited. Modification of details for job specification requirements must be approved by Archimax Ltd. The building designer is ultimately responsible to ensure all building work is designed and constructed according to building code requirements, best code of practice industry guidelines. All components must be supplied by Archimax. Archimax reserves the right to alter or upgrade details at any time without prior notice.

Detail
 ARCHIMAX® VERTICAL ON CAVITY
 TYPICAL CORNER ASSEMBLY


Drawing No.	Rev.
-	-
Scale	Date
NTS	NOV23

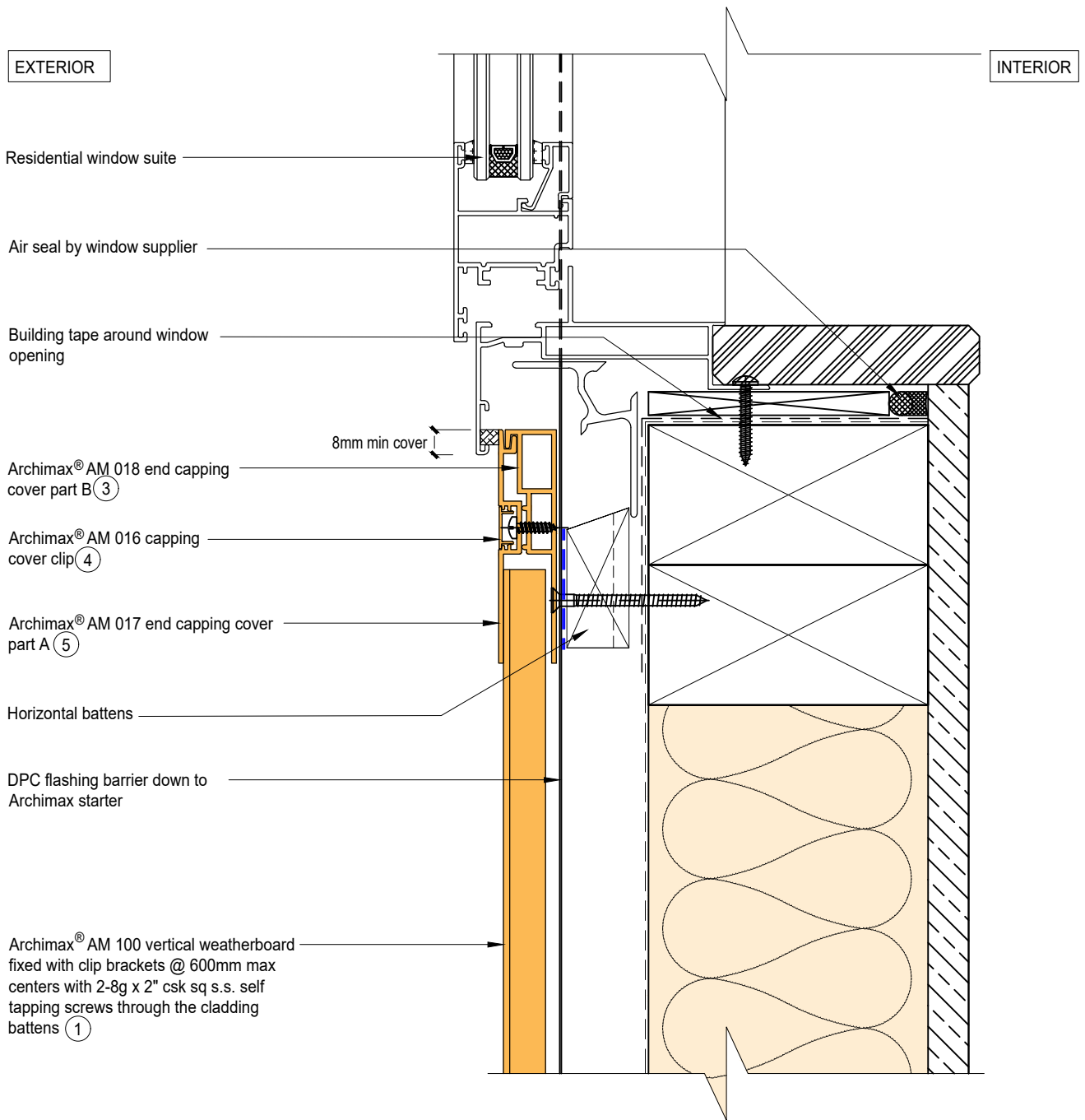


NOTE:

1. Stop ends to be installed at flashing ends.
2. Minimum Clearance between the AIR BARRIER and WINDOW JOINERY to be 45mm. Window Joinery should not be permanently fixed until cladding installed.




 <p>ARCHIMAX ALUMINIUM CLADDING SYSTEM <i>Creating more durable building envelopes</i> www.archimax.co.nz</p>	System AM100 - VERTICAL WEATHERBOARD	Detail ARCHIMAX® WINDOW HEAD DETAIL	Drawing No. Rev. AM-WH-V1 D			
	<p>This drawing is the copyright of Archimax Limited. Modification of details for job specification requirements must be approved by Archimax Ltd. The building designer is ultimately responsible to ensure all building work is designed and constructed according to building code requirements, best code of practice industry guidelines. All components must be supplied by Archimax. Archimax reserves the right to alter or upgrade details at any time without prior notice.</p>		<table border="1"> <tr> <td>Scale</td> <td>Date</td> </tr> <tr> <td>1:2</td> <td>NOV23</td> </tr> </table>	Scale	Date	1:2
Scale	Date					
1:2	NOV23					

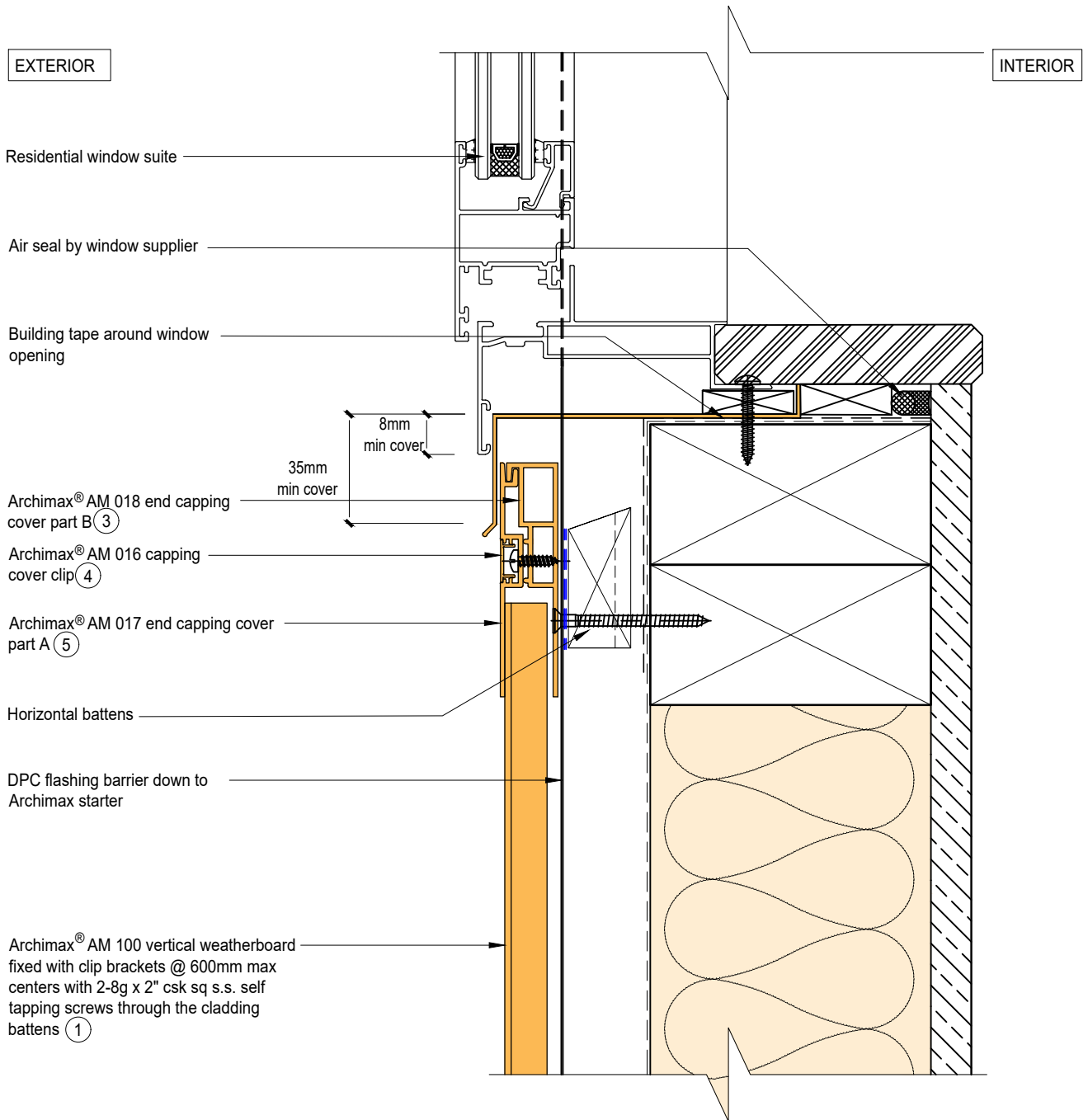


NOTE:

1. Minimum Clearance between the AIR BARRIER and WINDOW JOINERY to be 45mm. Window Joinery should not be permanently fixed until cladding installed.




 <p>ARCHIMAX ALUMINIUM CLADDING SYSTEM <i>Creating more durable building envelopes</i> www.archimax.co.nz</p>	<p>System AM100 - VERTICAL WEATHERBOARD</p>	<p>Detail ARCHIMAX® WINDOW SILL DETAIL</p>	<p>Drawing No. Rev. AM-WS-V2.1 D</p>			
	<p>This drawing is the copyright of Archimax Limited. Modification of details for job specification requirements must be approved by Archimax Ltd. The building designer is ultimately responsible to ensure all building work is designed and constructed according to building code requirements, best code of practice industry guidelines. All components must be supplied by Archimax. Archimax reserves the right to alter or upgrade details at any time without prior notice.</p>		<table border="1"> <tr> <td>Scale</td> <td>Date</td> </tr> <tr> <td>1:2</td> <td>NOV23</td> </tr> </table>	Scale	Date	1:2
Scale	Date					
1:2	NOV23					



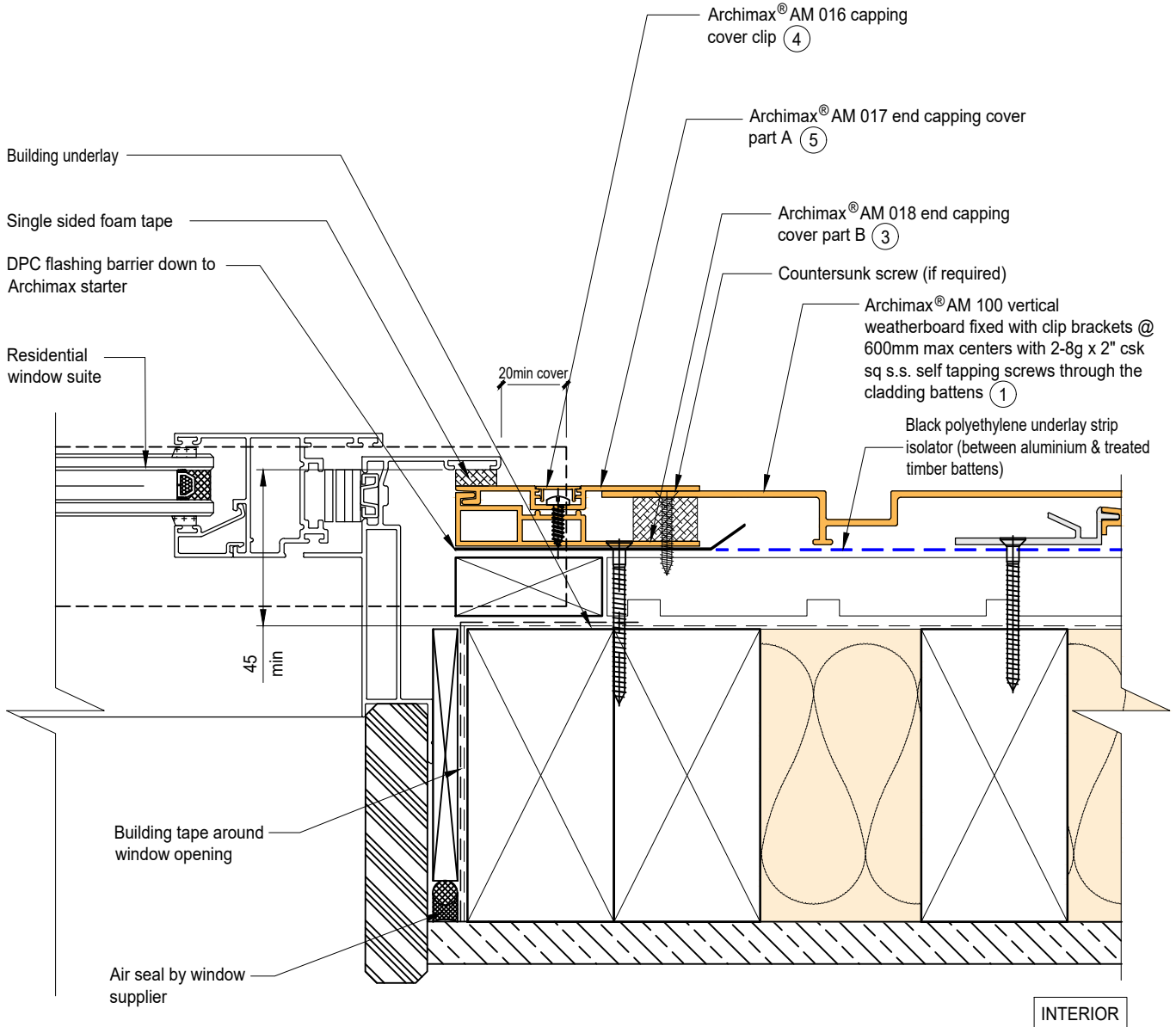
NOTE:

1. Minimum Clearance between the AIR BARRIER and WINDOW JOINERY to be 45mm. Window Joinery should not be permanently fixed until cladding installed.



 <p>ARCHIMAX ALUMINIUM CLADDING SYSTEM <i>Creating more durable building envelopes</i> www.archimax.co.nz</p>	System AM100 - VERTICAL WEATHERBOARD	Detail ARCHIMAX® WINDOW SILL DETAIL	Drawing No. Rev. AM-WS-V2.2 D			
	<p>This drawing is the copyright of Archimax Limited. Modification of details for job specification requirements must be approved by Archimax Ltd. The building designer is ultimately responsible to ensure all building work is designed and constructed according to building code requirements, best code of practice industry guidelines. All components must be supplied by Archimax. Archimax reserves the right to alter or upgrade details at any time without prior notice.</p>		<table border="1"> <tr> <td>Scale</td> <td>Date</td> </tr> <tr> <td>1:2</td> <td>NOV23</td> </tr> </table>	Scale	Date	1:2
Scale	Date					
1:2	NOV23					


EXTERIOR

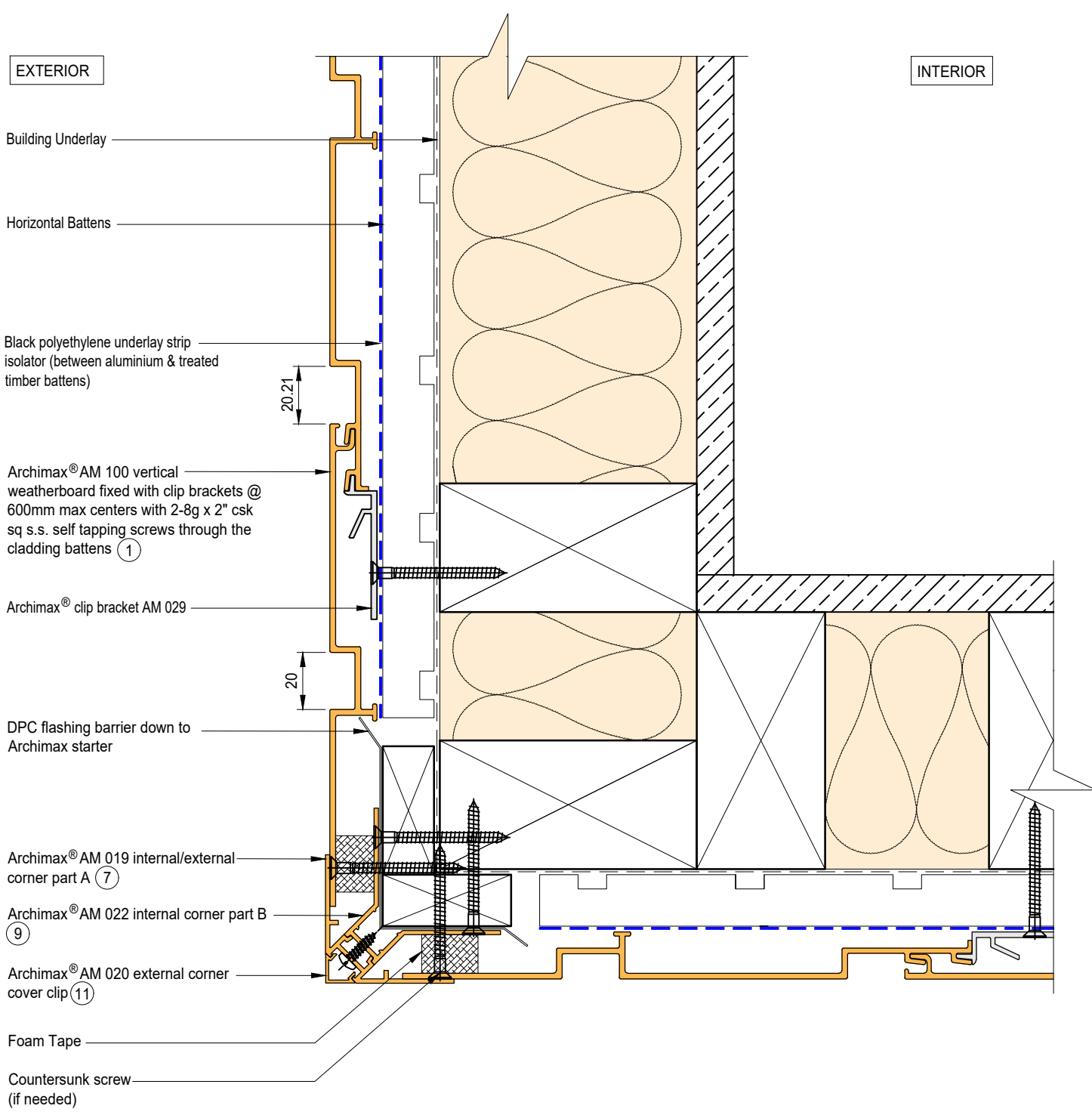



NOTE:

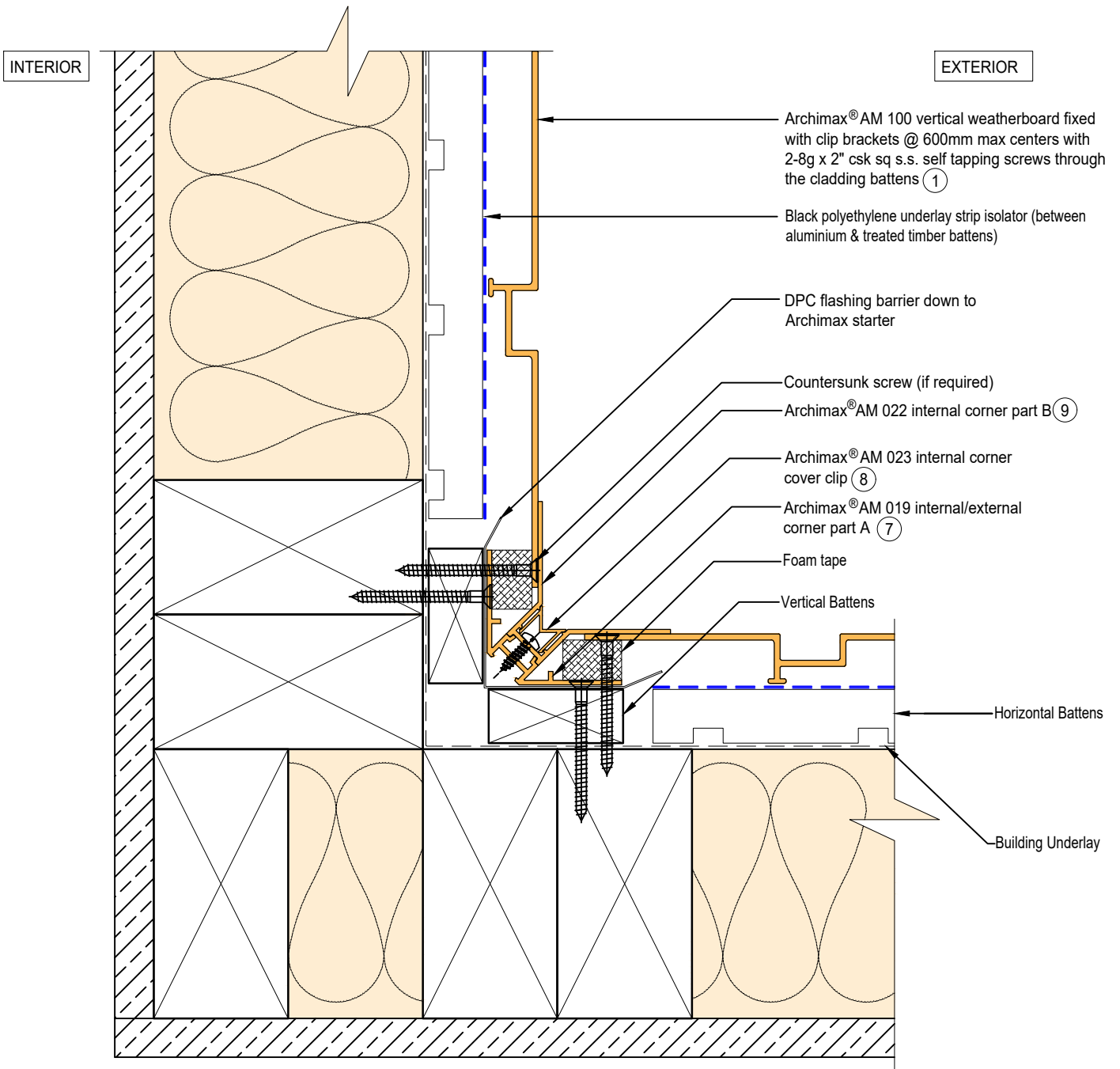
1. Minimum Clearance between the AIR BARRIER and WINDOW JOINERY to be 45mm. Window Joinery should not be permanently fixed until cladding installed.




 <p>ARCHIMAX ALUMINIUM CLADDING SYSTEM Creating more durable building envelopes www.archimax.co.nz</p>	System AM100 - VERTICAL WEATHERBOARD	Detail ARCHIMAX® WINDOW JAMB DETAIL	Drawing No. AM-WJ-V3	Rev. D
	<p>This drawing is the copyright of Archimax Limited. Modification of details for job specification requirements must be approved by Archimax Ltd. The building designer is ultimately responsible to ensure all building work is designed and constructed according to building code requirements, best code of practice industry guidelines. All components must be supplied by Archimax. Archimax reserves the right to alter or upgrade details at any time without prior notice.</p>			Scale 1:2



 <p>ARCHIMAX ALUMINIUM CLADDING SYSTEM <i>Creating more durable building envelopes</i> www.archimax.co.nz</p>	System AM100 - VERTICAL WEATHERBOARD	Detail ARCHIMAX® EXTERNAL CORNER DETAIL	Drawing No. Rev. AM-EXT-V4 D
	<small>This drawing is the copyright of Archimax Limited. Modification of details for job specification requirements must be approved by Archimax Ltd. The building designer is ultimately responsible to ensure all building work is designed and constructed according to building code requirements, best code of practice industry guidelines. All components must be supplied by Archimax. Archimax reserves the right to alter or upgrade details at any time without prior notice.</small>		Scale Date 1:2 NOV23



 <p>ARCHIMAX ALUMINIUM CLADDING SYSTEM <i>Creating more durable building envelopes</i> www.archimax.co.nz</p>	<p>System AM100 - VERTICAL WEATHERBOARD</p>	<p>Detail ARCHIMAX® INTERNAL CORNER DETAIL</p>	<p>Drawing No. Rev. AM-INT-V5 D</p>
	<p>This drawing is the copyright of Archimax Limited. Modification of details for job specification requirements must be approved by Archimax Ltd. The building designer is ultimately responsible to ensure all building work is designed and constructed according to building code requirements, best code of practice industry guidelines. All components must be supplied by Archimax. Archimax reserves the right to alter or upgrade details at any time without prior notice.</p>		<p>Scale Date 1:2 NOV23</p>

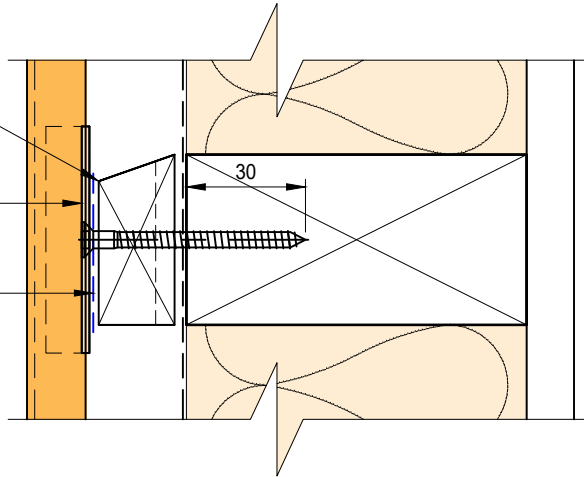
EXTERIOR

INTERIOR

Castellated timber batten (Horizontal)

Archimax® clip bracket AM 029

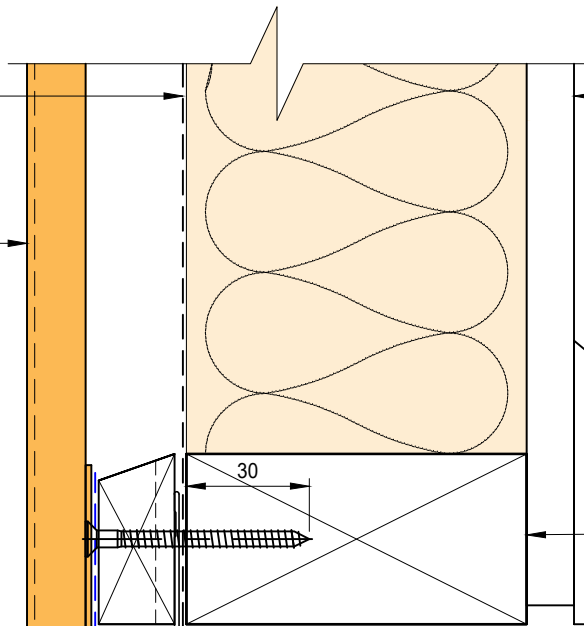
Black polyethylene underlay strip isolator (between aluminium & treated timber battens)



Building underlay

Interior lining

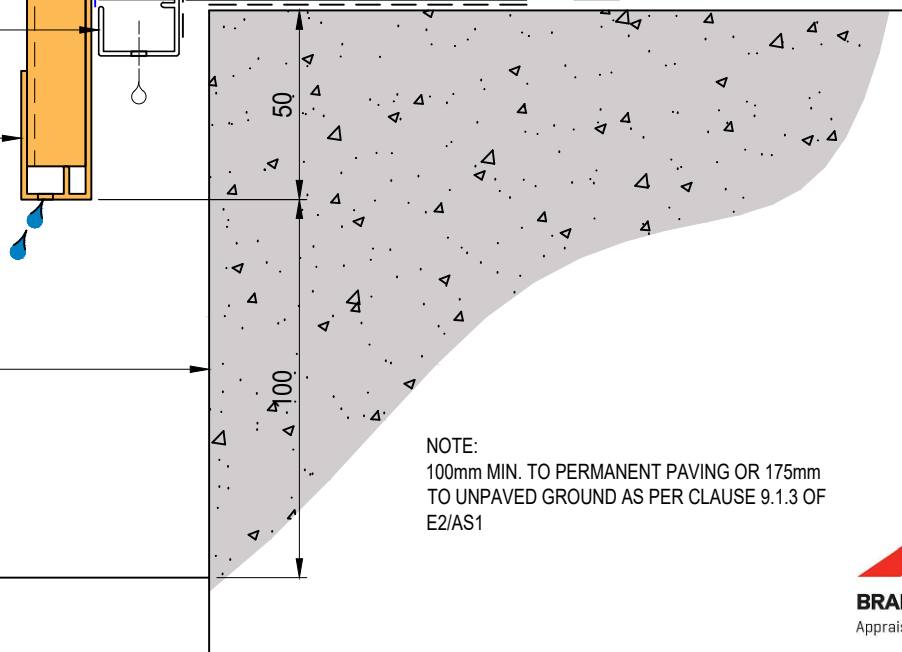
① Archimax® AM 100 vertical weatherboard fixed with clip brackets @ 600mm max centers with 2-8g x 2" csk sq s.s. self tapping screws through the cladding battens



Bottom plate over DPC

Cavity vent strip (By others)

② Archimax® AM 009 board starter



Concrete slab or brickwork (By others)

Finish ground level

NOTE:
100mm MIN. TO PERMANENT PAVING OR 175mm TO UNPAVED GROUND AS PER CLAUSE 9.1.3 OF E2/AS1



System
AM100 - VERTICAL WEATHERBOARD

Detail
ARCHIMAX® CONCRETE FLOOR BOARD STARTER DETAIL - TIMBER

Drawing No. Rev.
AM-CBS-V6.1 D

This drawing is the copyright of Archimax Limited. Modification of details for job specification requirements must be approved by Archimax Ltd. The building designer is ultimately responsible to ensure all building work is designed and constructed according to building code requirements, best code of practice industry guidelines. All components must be supplied by Archimax. Archimax reserves the right to alter or upgrade details at any time without prior notice.

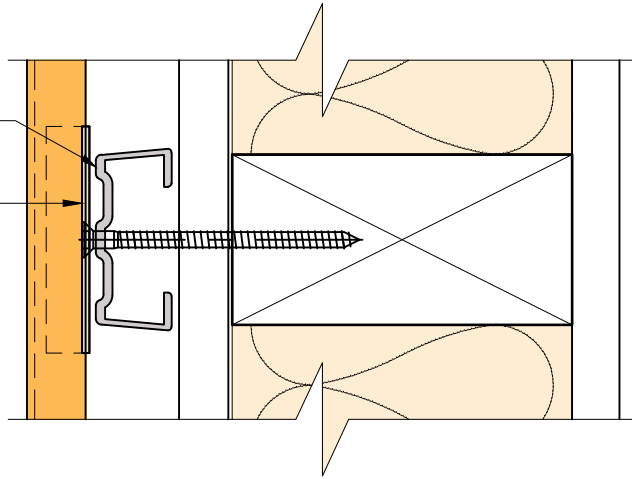
Scale Date
1:2 NOV23

EXTERIOR

INTERIOR

Archimax® Aluminium Batten AMB 01 (Horizontal)

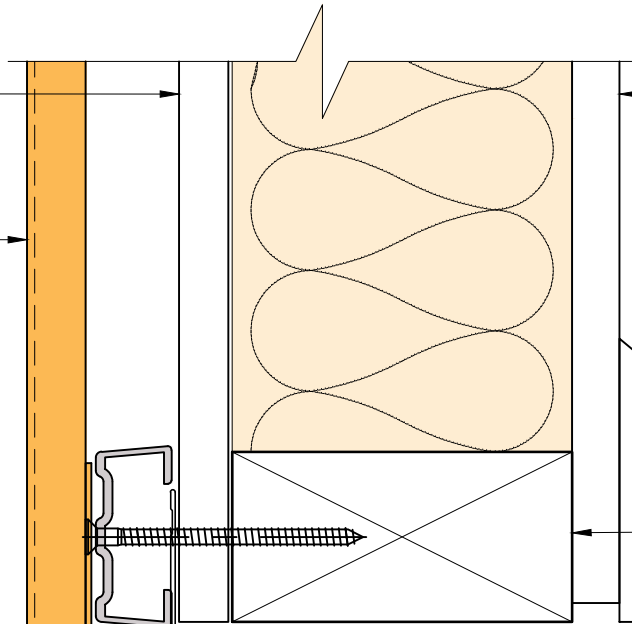
Archimax® clip bracket AM 029



Rigid air barrier (FRR)

Interior lining

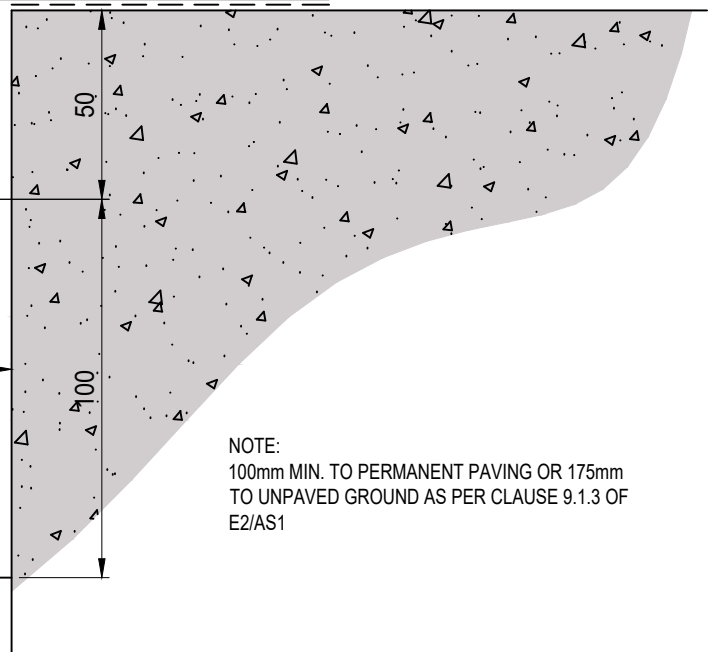
① Archimax® AM 100 vertical weatherboard fixed with clip brackets @ 600mm max centers with 2-8g x 2" csk sq s.s. self tapping screws through the cladding battens



Bottom plate over DPC

Cavity vent strip (By others)

② Archimax® AM 009 board starter



NOTE:
100mm MIN. TO PERMANENT PAVING OR 175mm
TO UNPAVED GROUND AS PER CLAUSE 9.1.3 OF
E2/AS1

Concrete slab or brickwork (By others)

Finish ground level

EXTERIOR

INTERIOR

Building underlay

Archimax® AM 100 vertical weatherboard fixed with clip brackets @ 600mm max centers with 2-8g x 2" csk sq s.s. self tapping screws through the cladding battens ①

Black polyethylene underlay strip isolator (between aluminium & treated timber battens)

Flexible flashing tape

Cavity vent strip

Archimax AM 009 board starter ②

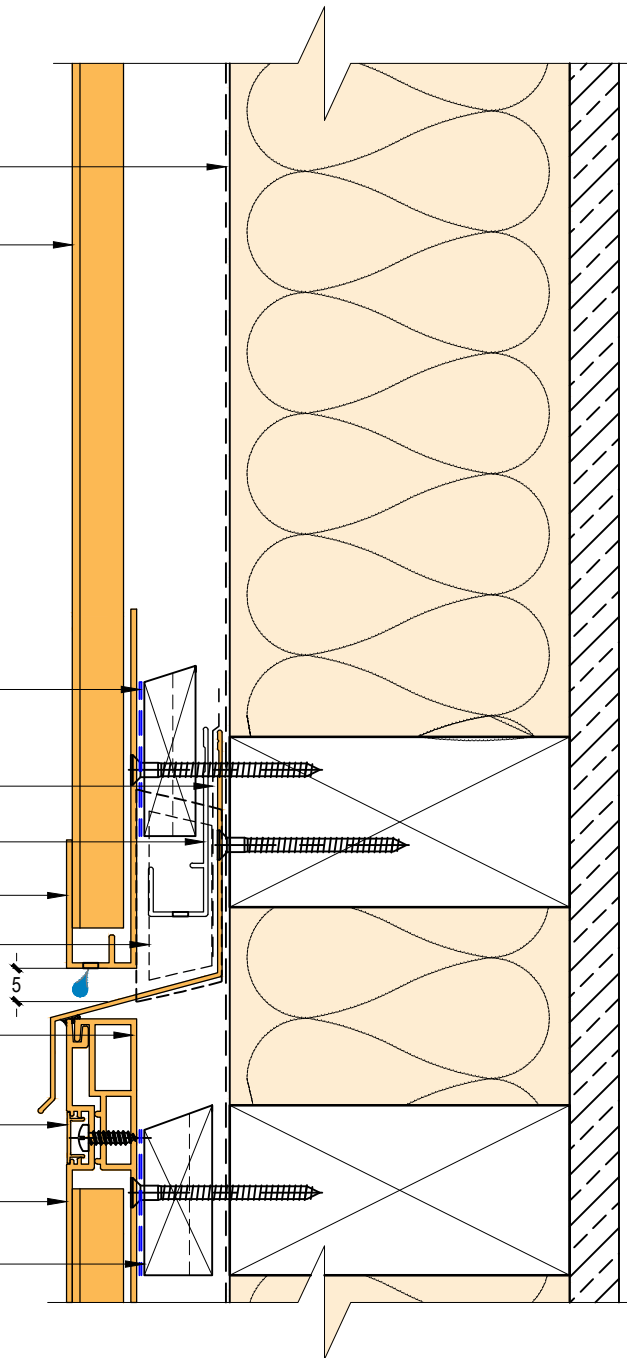
Inter-Storey flashing stop ends

Archimax® AM 018 end capping cover part B ③

Archimax® AM 016 capping cover clip ④

Archimax® AM 017 end capping cover part A ⑤

Horizontal battens



NOTE:
STOP ENDS TO BE INSTALLED AT INTER-STOREY FLASHING ENDS



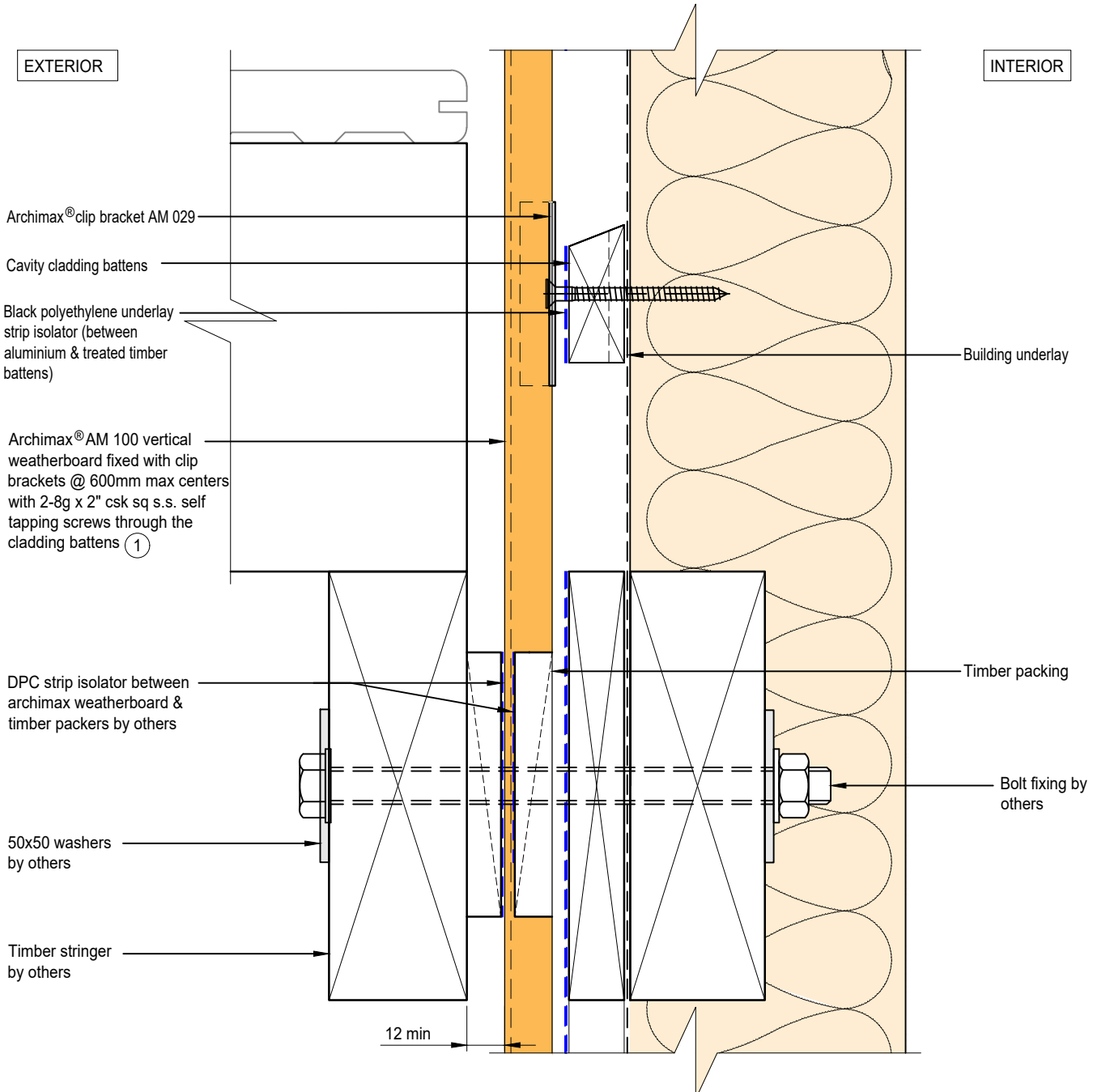
System
AM100 - VERTICAL WEATHERBOARD

Detail
ARCHIMAX® HORIZONTAL JOINT
DETAIL

Drawing No. Rev.
AM-HJ-V7 D

This drawing is the copyright of Archimax Limited. Modification of details for job specification requirements must be approved by Archimax Ltd. The building designer is ultimately responsible to ensure all building work is designed and constructed according to building code requirements, best code of practice industry guidelines. All components must be supplied by Archimax. Archimax reserves the right to alter or upgrade details at any time without prior notice.

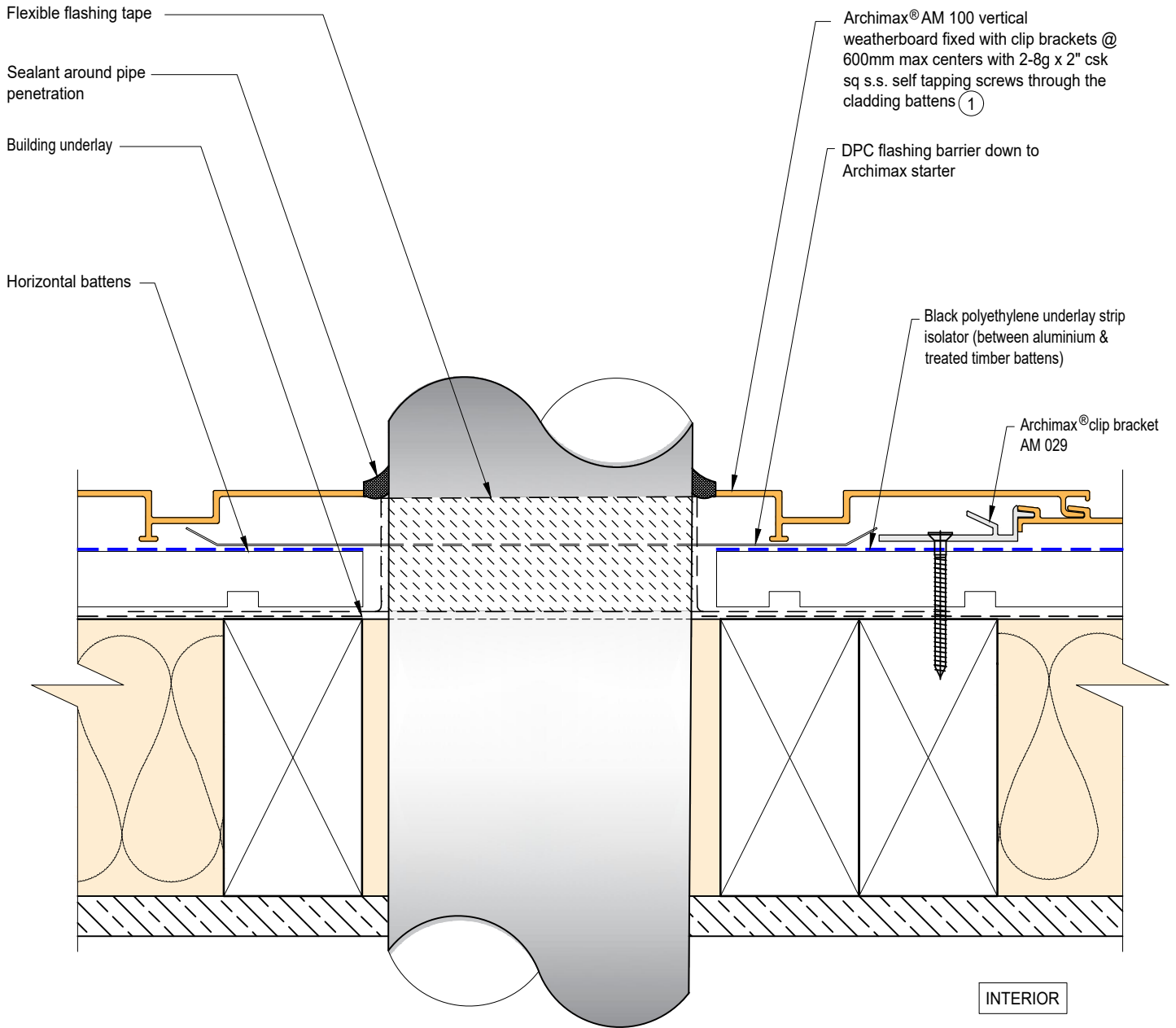
Scale Date
1:2 NOV23



ARCHIMAX
ALUMINIUM CLADDING SYSTEM
Creating more durable building envelopes
www.archimax.co.nz

System AM100 - VERTICAL WEATHERBOARD	Detail ARCHIMAX® DECK JUNCTION DETAIL	Drawing No. AM-DJ-V8	Rev. D
This drawing is the copyright of Archimax Limited. Modification of details for job specification requirements must be approved by Archimax Ltd. The building designer is ultimately responsible to ensure all building work is designed and constructed according to building code requirements, best code of practice industry guidelines. All components must be supplied by Archimax. Archimax reserves the right to alter or upgrade details at any time without prior notice.		Scale 1:2	Date NOV23

EXTERIOR



INTERIOR



BRANZ Appraised
Appraisal No. 1173 [2021]

EXTERIOR

INTERIOR

Archimax® AM 100 vertical weatherboard fixed with clip brackets @ 600mm max centers with 2-8g x 2" csk sq s.s. self tapping screws through the cladding battens ①

Archimax® clip bracket AM 029

Horizontal battens

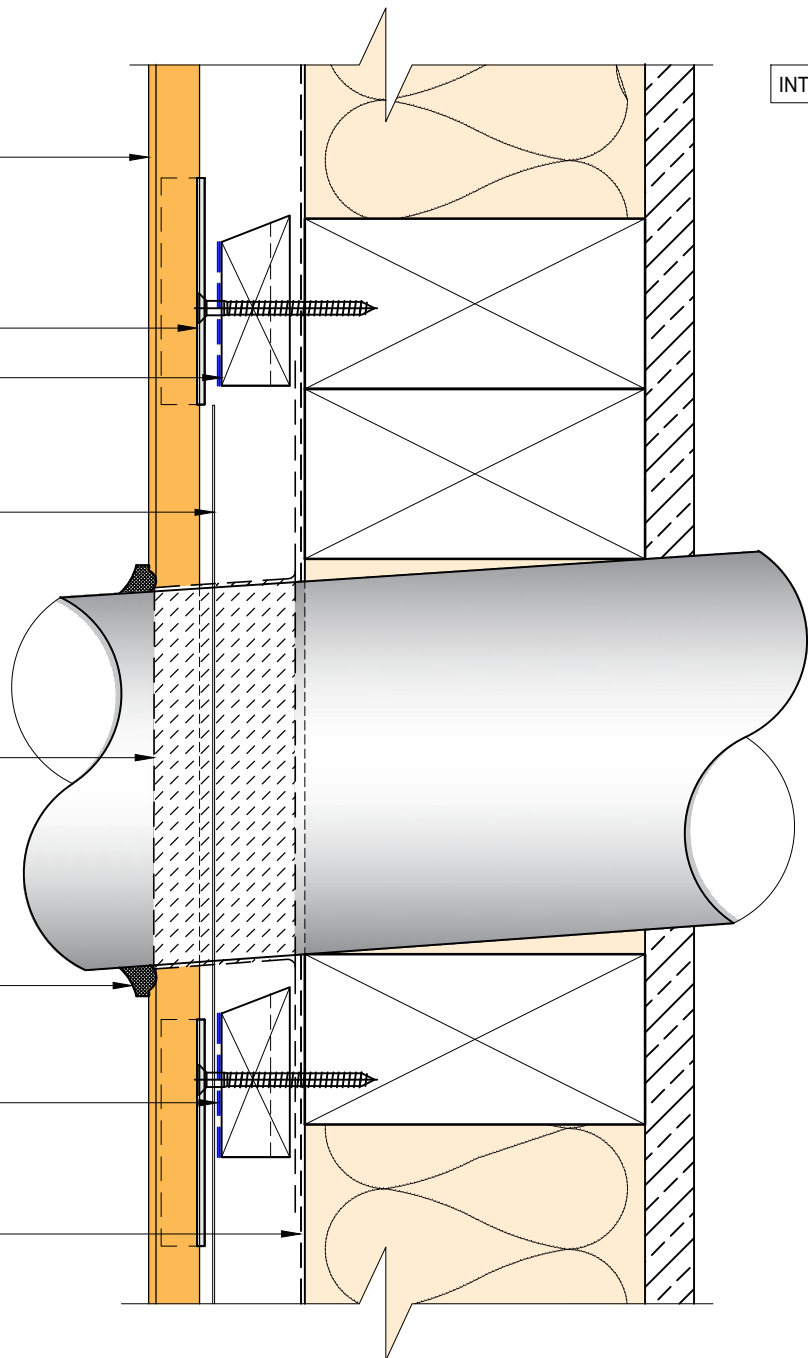
DPC flashing barrier down to Archimax starter

Flexible flashing tape

Sealant around pipe penetration

Black polyethylene underlay strip isolator (between aluminium & treated timber battens)

Building underlay



ARCHIMAX
ALUMINIUM CLADDING SYSTEM
Creating more durable building envelopes
www.archimax.co.nz

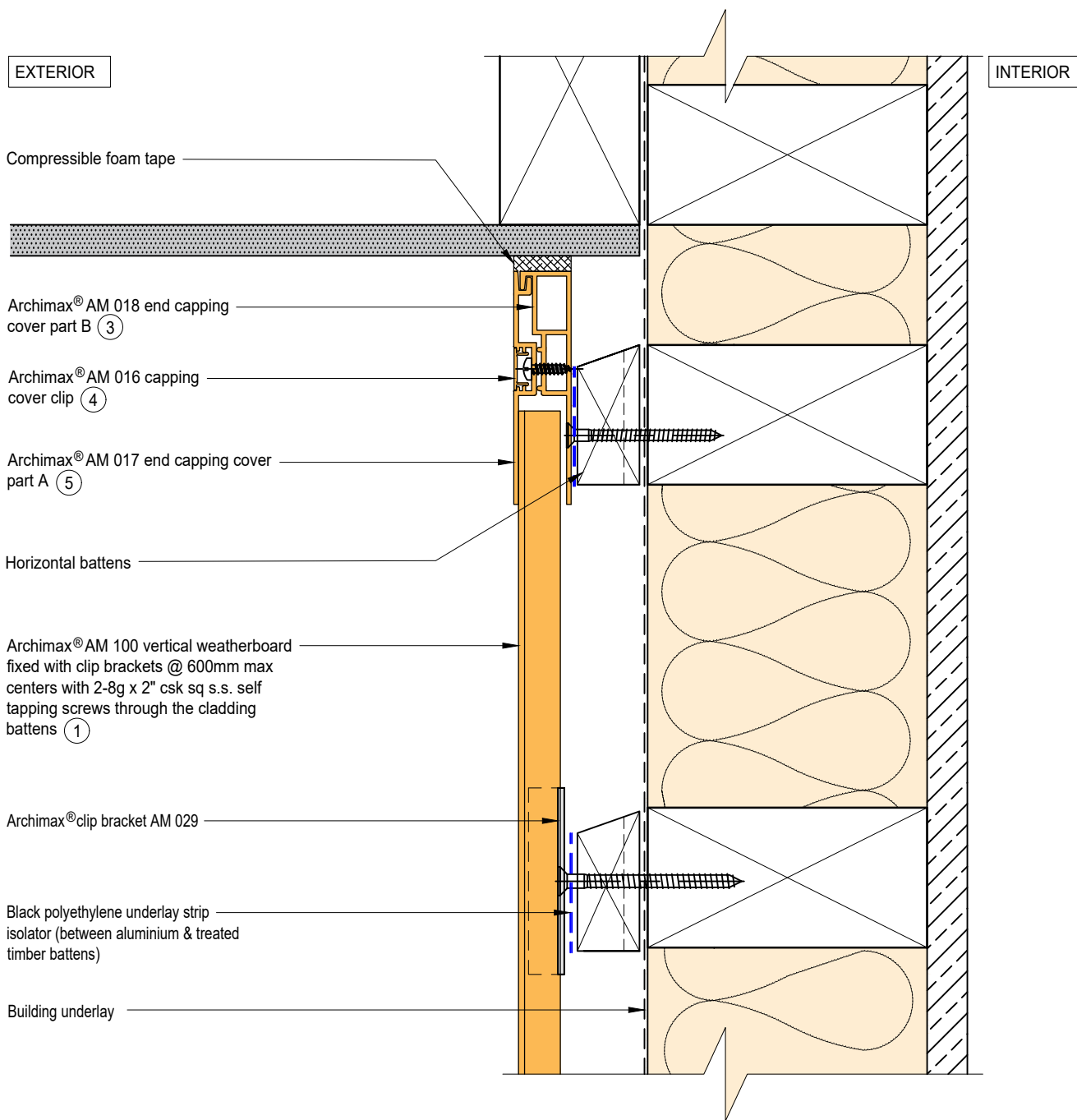
System
AM100 - VERTICAL WEATHERBOARD

Detail
ARCHIMAX® PIPE PENETRATION - SECTION VIEW DETAIL

Drawing No. Rev.
AM-PP-V9b D

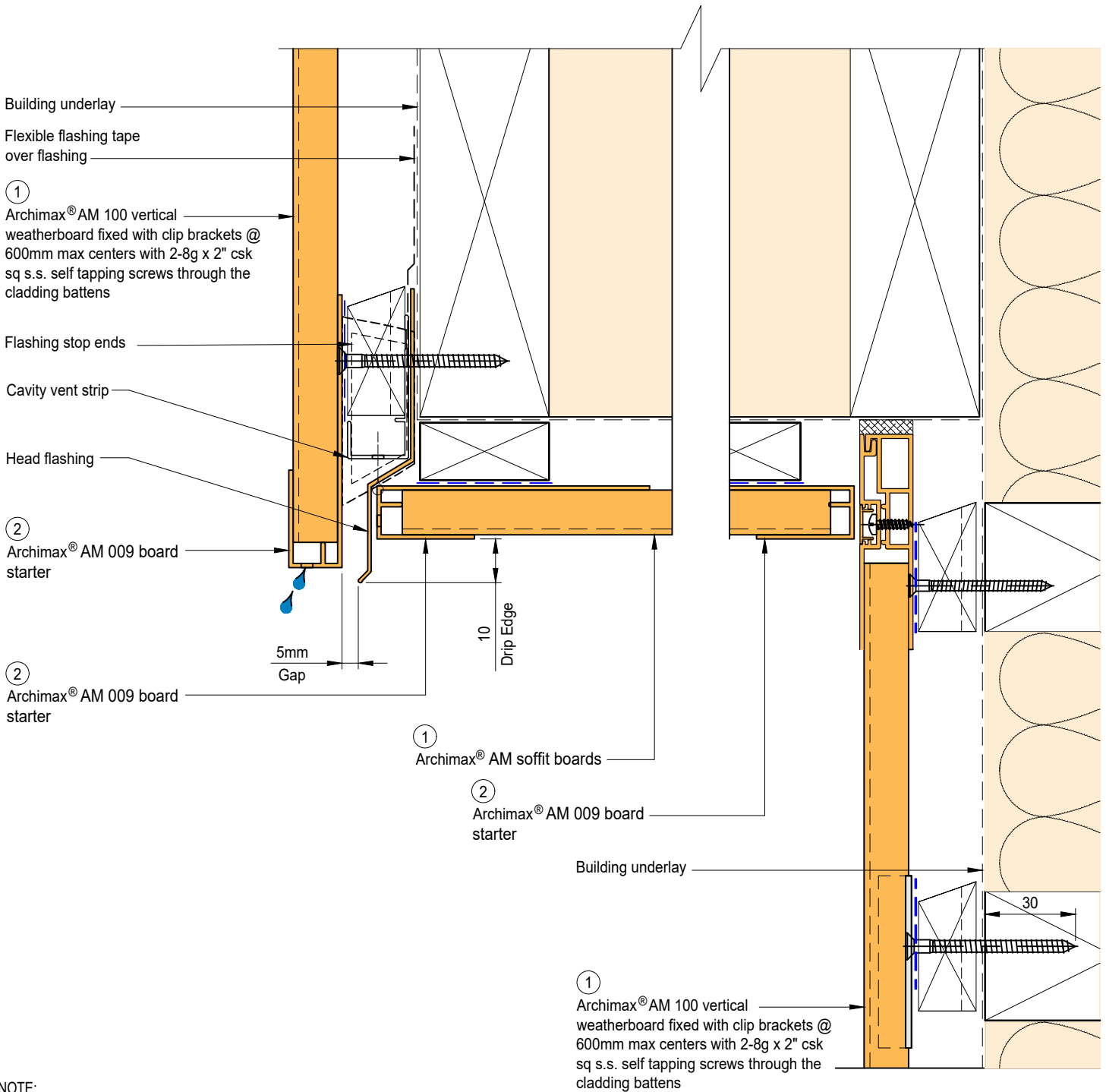
This drawing is the copyright of Archimax Limited. Modification of details for job specification requirements must be approved by Archimax Ltd. The building designer is ultimately responsible to ensure all building work is designed and constructed according to building code requirements, best code of practice industry guidelines. All components must be supplied by Archimax. Archimax reserves the right to alter or upgrade details at any time without prior notice.

Scale Date
1:2 NOV23





ARCHIMAX
 ALUMINIUM CLADDING SYSTEM
Creating more durable building envelopes
www.archimax.co.nz

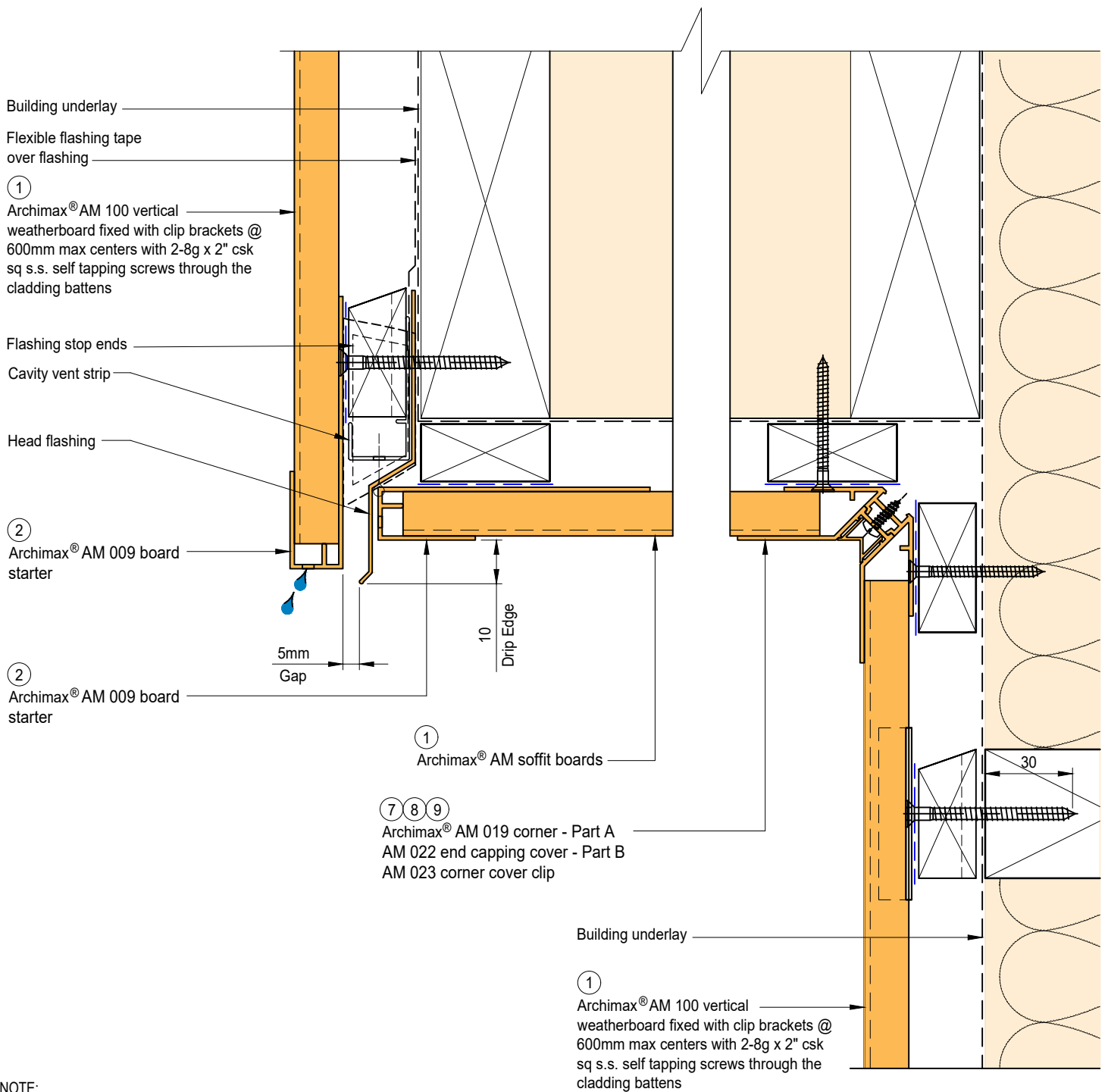
System AM100 - VERTICAL WEATHERBOARD	Detail ARCHIMAX® SOFFIT DETAIL	Drawing No. Rev. AM-SO-V10 D
<small>This drawing is the copyright of Archimax Limited. Modification of details for job specification requirements must be approved by Archimax Ltd. The building designer is ultimately responsible to ensure all building work is designed and constructed according to building code requirements, best code of practice industry guidelines. All components must be supplied by Archimax. Archimax reserves the right to alter or upgrade details at any time without prior notice.</small>		Scale 1:2
		Date NOV23




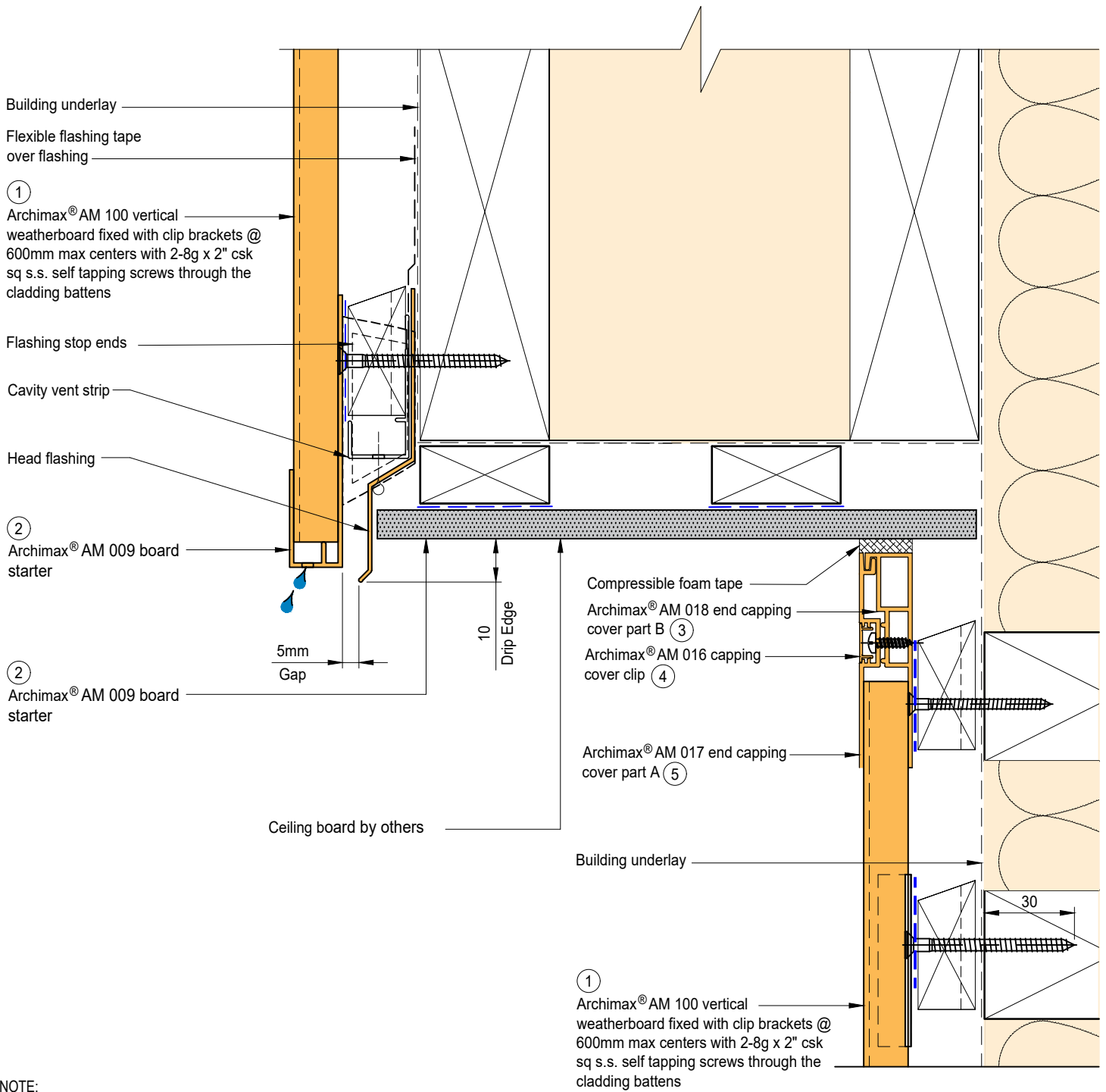
NOTE:
STOP ENDS TO BE INSTALLED AT FLASHING ENDS



 <p>ARCHIMAX ALUMINIUM CLADDING SYSTEM <i>Creating more durable building envelopes</i> www.archimax.co.nz</p>	System AM100 - VERTICAL WEATHERBOARD	Detail ARCHIMAX® FACIA, SOFFIT & WALL DETAIL	Drawing No. Rev. AM-SO-V11.1 D			
	<p>This drawing is the copyright of Archimax Limited. Modification of details for job specification requirements must be approved by Archimax Ltd. The building designer is ultimately responsible to ensure all building work is designed and constructed according to building code requirements, best code of practice industry guidelines. All components must be supplied by Archimax. Archimax reserves the right to alter or upgrade details at any time without prior notice.</p>		<table border="1"> <tr> <td>Scale</td> <td>Date</td> </tr> <tr> <td>1:2</td> <td>NOV23</td> </tr> </table>	Scale	Date	1:2
Scale	Date					
1:2	NOV23					




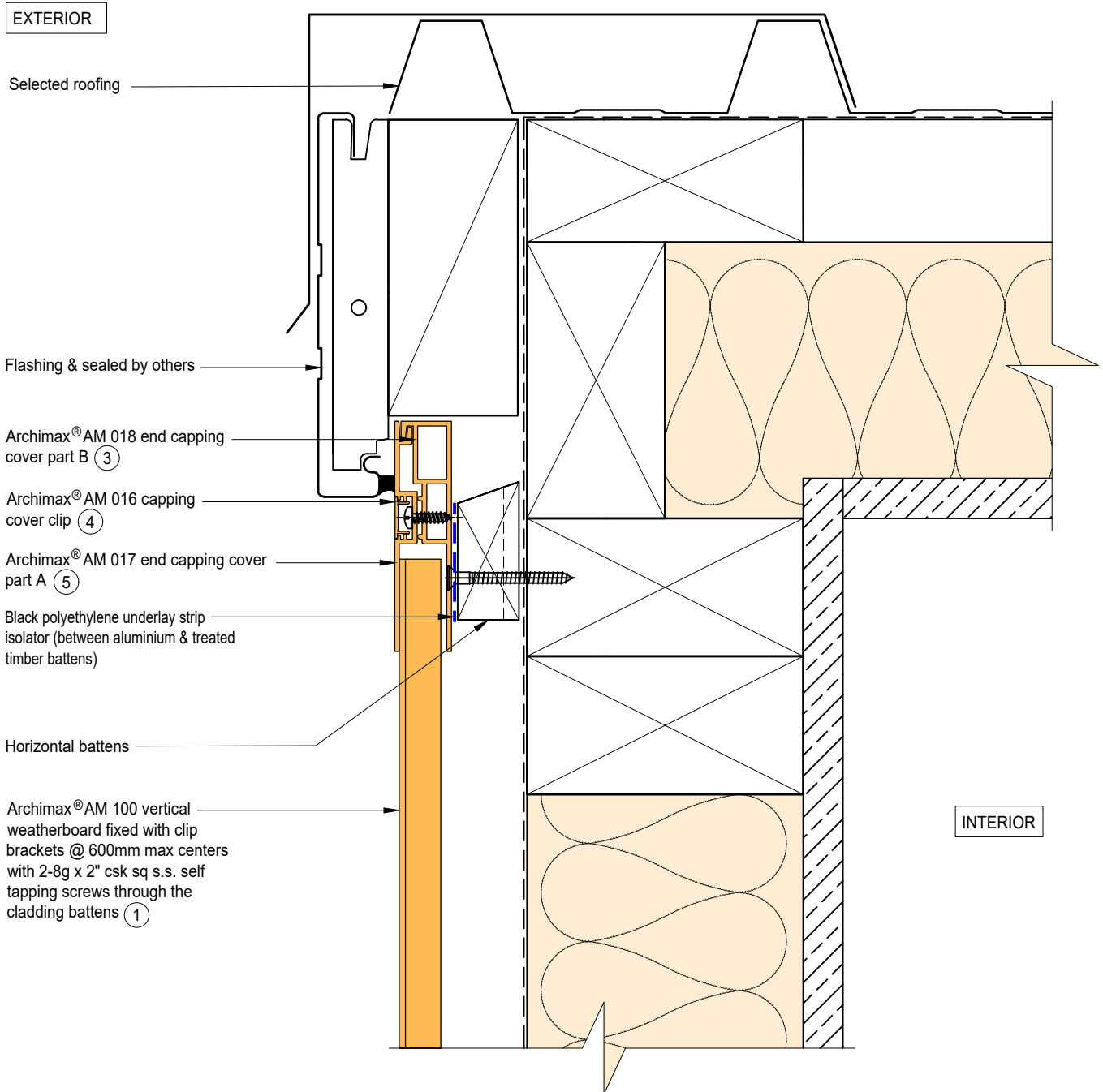
 <p>ARCHIMAX ALUMINIUM CLADDING SYSTEM <i>Creating more durable building envelopes</i> www.archimax.co.nz</p>	System AM100 - VERTICAL WEATHERBOARD	Detail ARCHIMAX® FACIA, SOFFIT & WALL DETAIL (90° SOFFIT / WALL) DETAIL	Drawing No. Rev. AM-SO-V11.2 D			
	<p>This drawing is the copyright of Archimax Limited. Modification of details for job specification requirements must be approved by Archimax Ltd. The building designer is ultimately responsible to ensure all building work is designed and constructed according to building code requirements, best code of practice industry guidelines. All components must be supplied by Archimax. Archimax reserves the right to alter or upgrade details at any time without prior notice.</p>		<table border="1"> <tr> <td>Scale</td> <td>Date</td> </tr> <tr> <td>1:2</td> <td>NOV23</td> </tr> </table>	Scale	Date	1:2
Scale	Date					
1:2	NOV23					




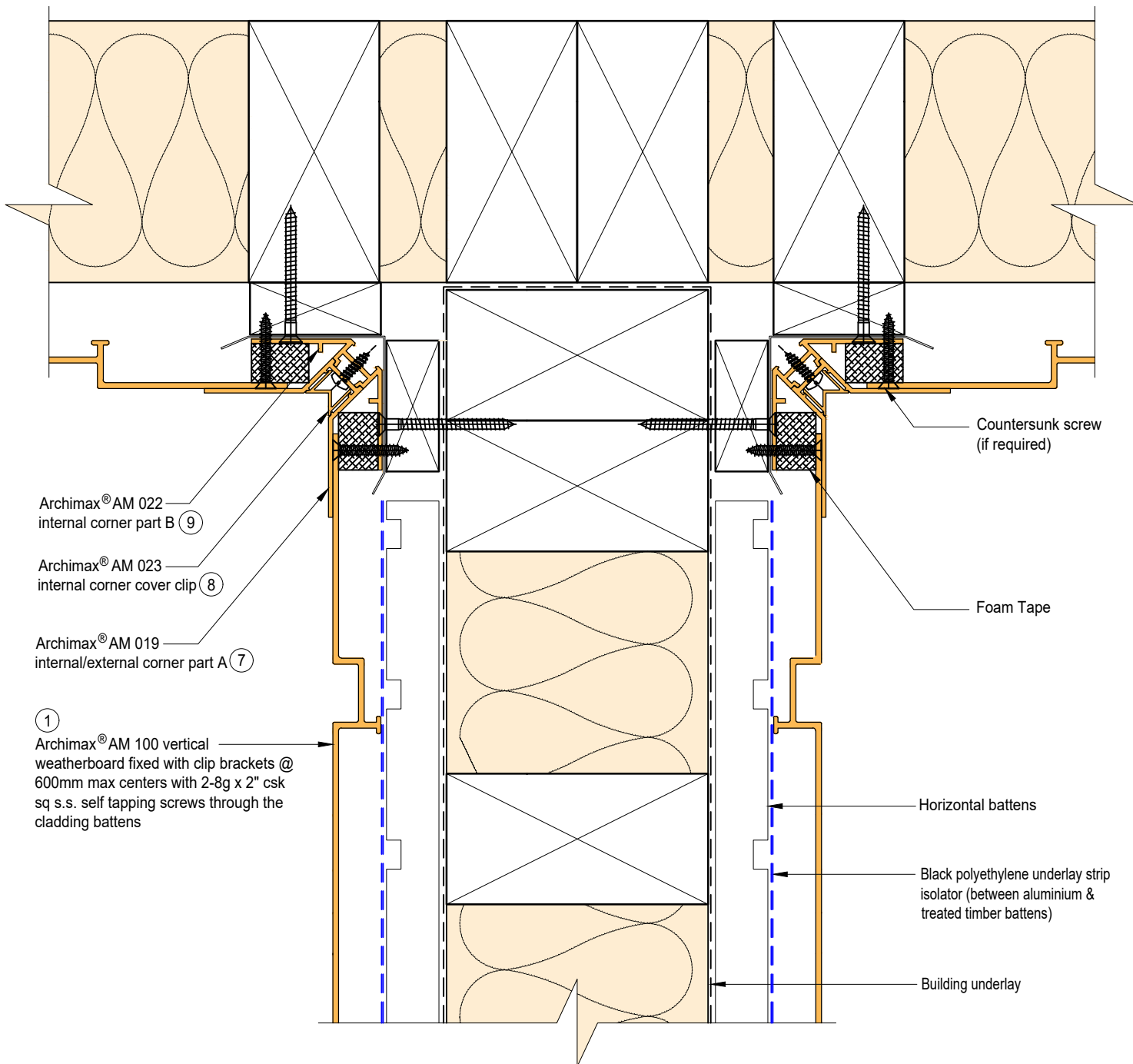
NOTE:
STOP ENDS TO BE INSTALLED AT FLASHING ENDS




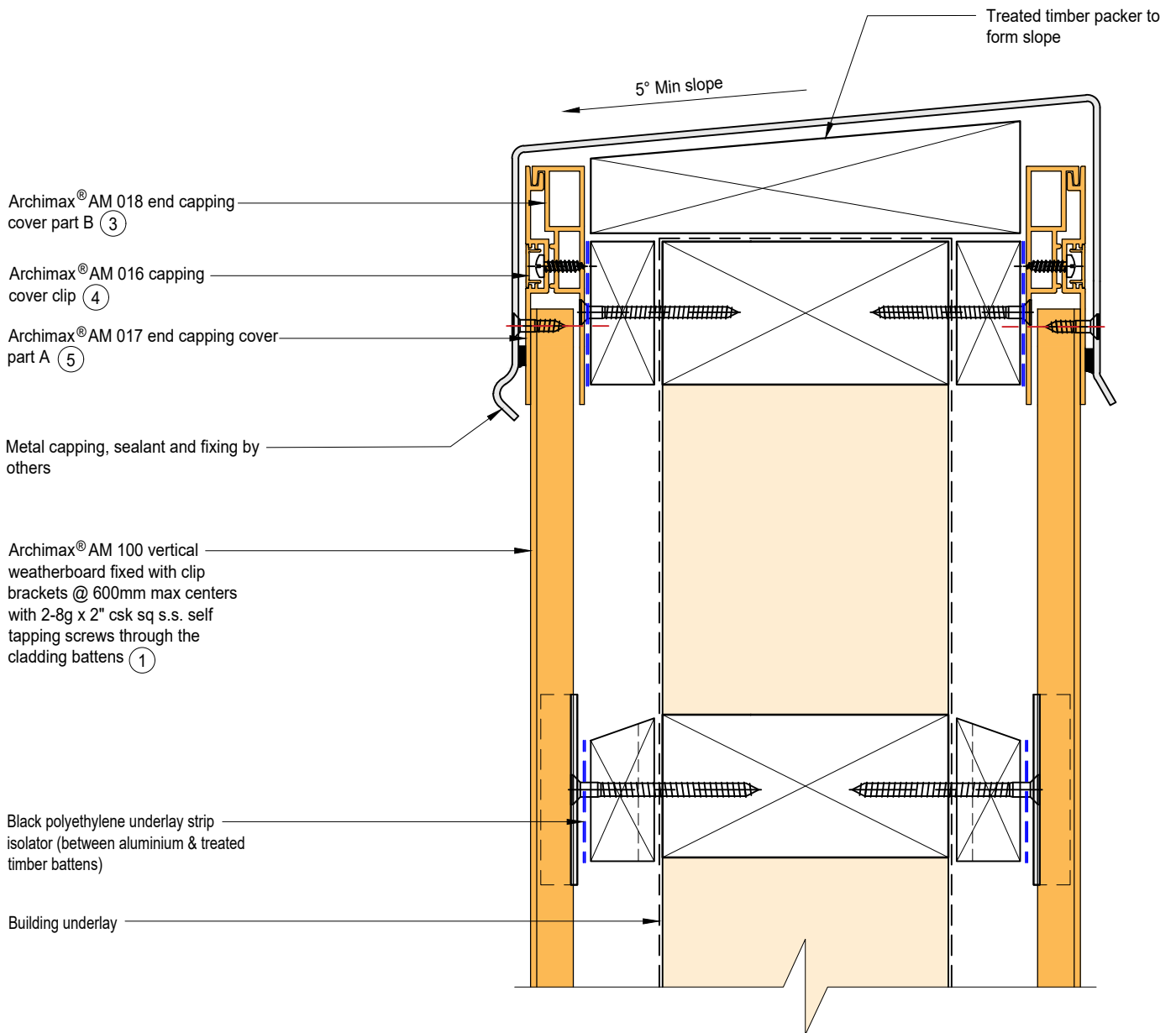
 <p>ARCHIMAX ALUMINIUM CLADDING SYSTEM <i>Creating more durable building envelopes</i> www.archimax.co.nz</p>	System AM100 - VERTICAL WEATHERBOARD	Detail ARCHIMAX® FASCIA, BOARD SOFFIT, & WALL DETAIL	Drawing No. Rev. AM-SO-V11.3 D	
	<p>This drawing is the copyright of Archimax Limited. Modification of details for job specification requirements must be approved by Archimax Ltd. The building designer is ultimately responsible to ensure all building work is designed and constructed according to building code requirements, best code of practice industry guidelines. All components must be supplied by Archimax. Archimax reserves the right to alter or upgrade details at any time without prior notice.</p>			Scale 1:2



 <p>ARCHIMAX ALUMINIUM CLADDING SYSTEM <i>Creating more durable building envelopes</i> www.archimax.co.nz</p>	System AM100 - VERTICAL WEATHERBOARD	Detail ARCHIMAX® NON - SOFFIT DETAIL	Drawing No. Rev. AM-NSO-V12 D			
	<p>This drawing is the copyright of Archimax Limited. Modification of details for job specification requirements must be approved by Archimax Ltd. The building designer is ultimately responsible to ensure all building work is designed and constructed according to building code requirements, best code of practice industry guidelines. All components must be supplied by Archimax. Archimax reserves the right to alter or upgrade details at any time without prior notice.</p>		<table border="1"> <tr> <td>Scale</td> <td>Date</td> </tr> <tr> <td>1:2</td> <td>NOV23</td> </tr> </table>	Scale	Date	1:2
Scale	Date					
1:2	NOV23					

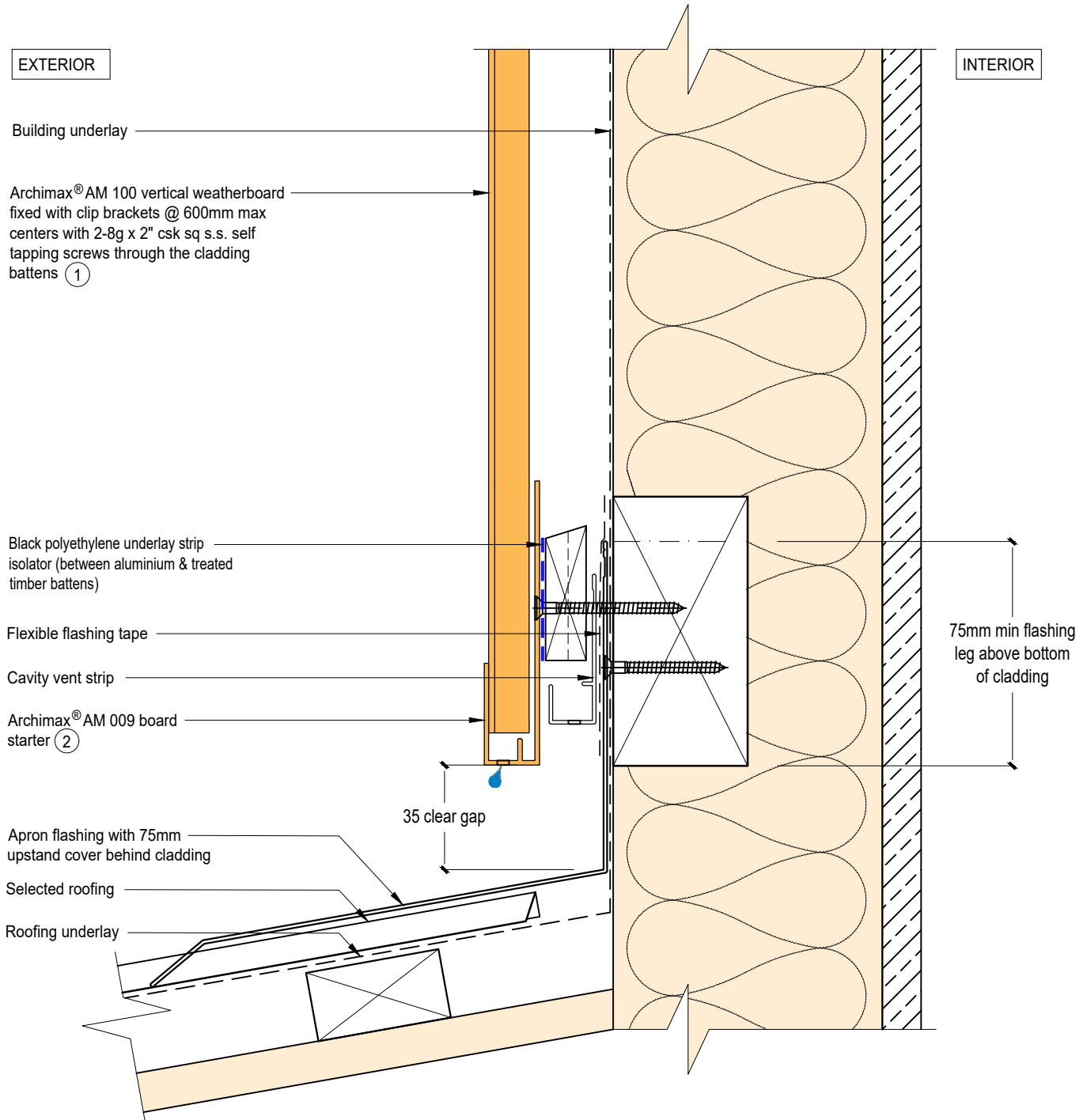


 <p>ARCHIMAX ALUMINIUM CLADDING SYSTEM <i>Creating more durable building envelopes</i> www.archimax.co.nz</p>	<p>System AM100 - VERTICAL WEATHERBOARD</p>	<p>Detail ARCHIMAX® INTERNAL CORNER JUNCTION DETAIL</p>	<p>Drawing No. Rev. AM-BJ-V13 D</p>
	<p>This drawing is the copyright of Archimax Limited. Modification of details for job specification requirements must be approved by Archimax Ltd. The building designer is ultimately responsible to ensure all building work is designed and constructed according to building code requirements, best code of practice industry guidelines. All components must be supplied by Archimax. Archimax reserves the right to alter or upgrade details at any time without prior notice.</p>		<p>Scale Date 1:2 NOV23</p>




ARCHIMAX
ALUMINIUM CLADDING SYSTEM
Creating more durable building envelopes
www.archimax.co.nz

System AM100 - VERTICAL WEATHERBOARD	Detail ARCHIMAX® PARAPET WITH CAVITY DETAIL	Drawing No. Rev. AM-PAR-V14 D
<small>This drawing is the copyright of Archimax Limited. Modification of details for job specification requirements must be approved by Archimax Ltd. The building designer is ultimately responsible to ensure all building work is designed and constructed according to building code requirements, best code of practice industry guidelines. All components must be supplied by Archimax. Archimax reserves the right to alter or upgrade details at any time without prior notice.</small>		Scale 1:2
		Date NOV23




ARCHIMAX
 ALUMINIUM CLADDING SYSTEM
Creating more durable building envelopes
 www.archimax.co.nz

System
AM100 - VERTICAL WEATHERBOARD

Detail
ARCHIMAX® LOWER ROOF WALL JUNCTION DETAIL

Drawing No. Rev.
AM-RW-V15 D

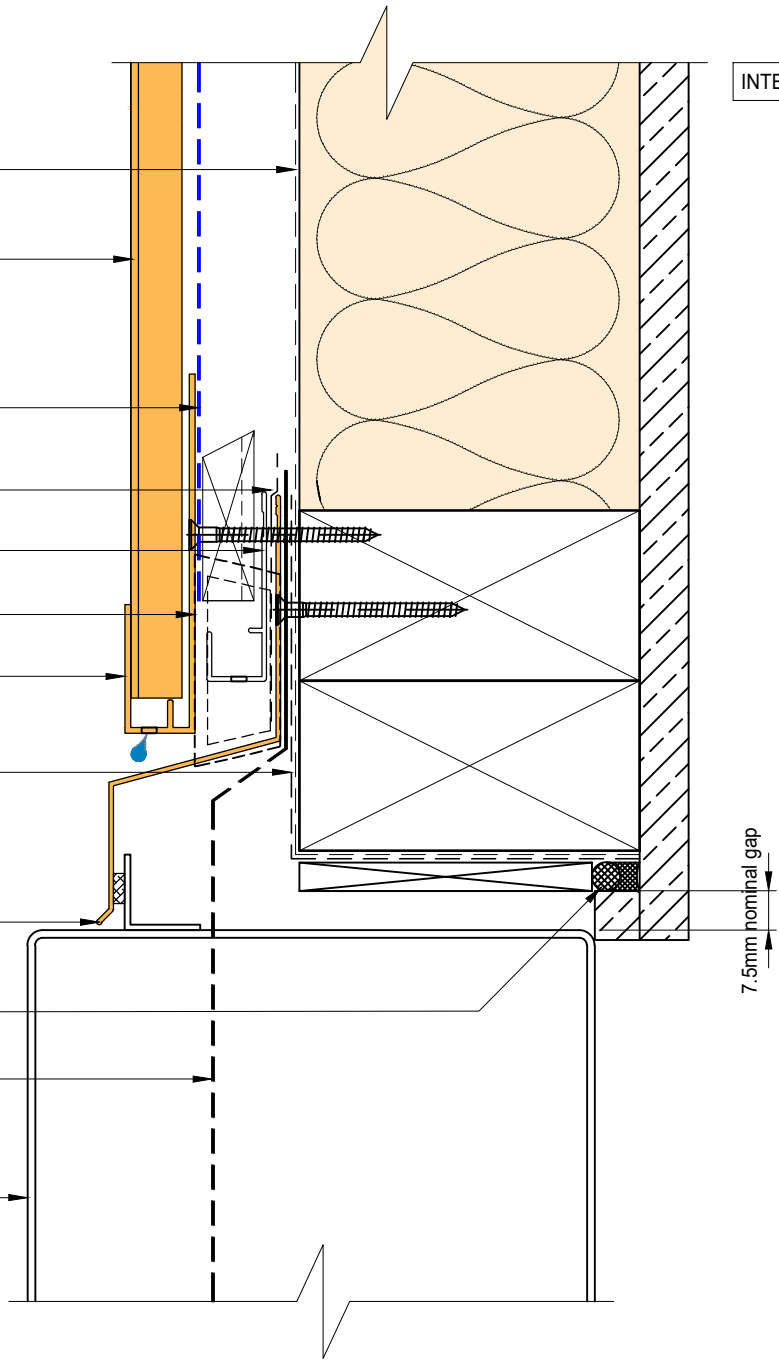
This drawing is the copyright of Archimax Limited. Modification of details for job specification requirements must be approved by Archimax Ltd. The building designer is ultimately responsible to ensure all building work is designed and constructed according to building code requirements, best code of practice industry guidelines. All components must be supplied by Archimax. Archimax reserves the right to alter or upgrade details at any time without prior notice.

Scale Date
1:2 NOV23

EXTERIOR

INTERIOR


- Building underlay
- Archimax® AM 100 vertical weatherboard fixed with clip brackets @ 600mm max centers with 2-8g x 2" csk sq s.s. self tapping screws through the cladding battens ①
- Black polyethylene underlay strip isolator (between aluminium & treated timber battens)
- Flexible flashing tape
- Cavity vent strip
- Flashing stop ends
- Archimax® AM 009 board starter ②
- Building tape around window opening
- Aluminium head flashing with 15° slope by window supplier
- Air seal by window supplier
- DPC flashing barrier down to Archimax starter
- Meter box

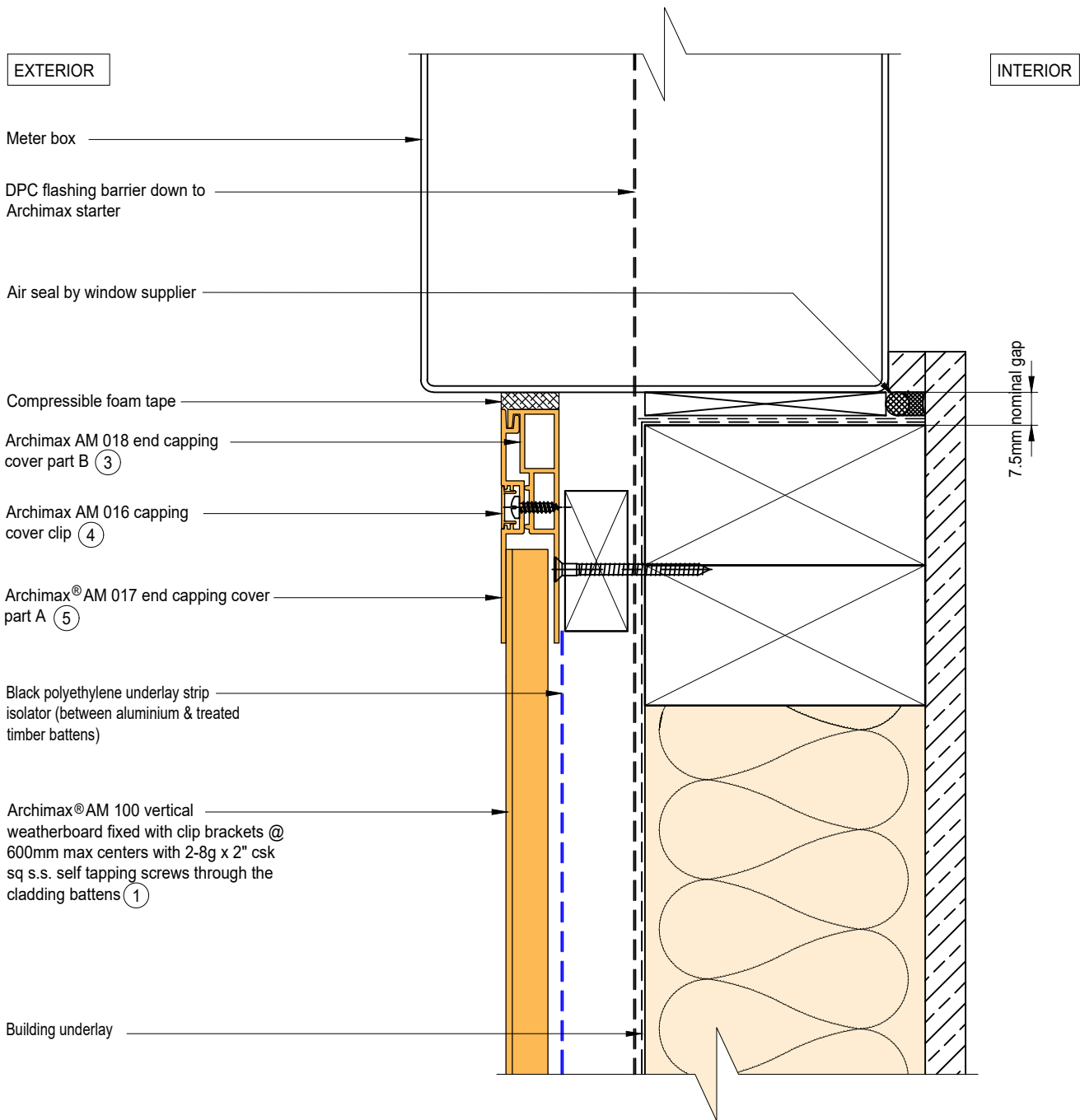



7.5mm nominal gap

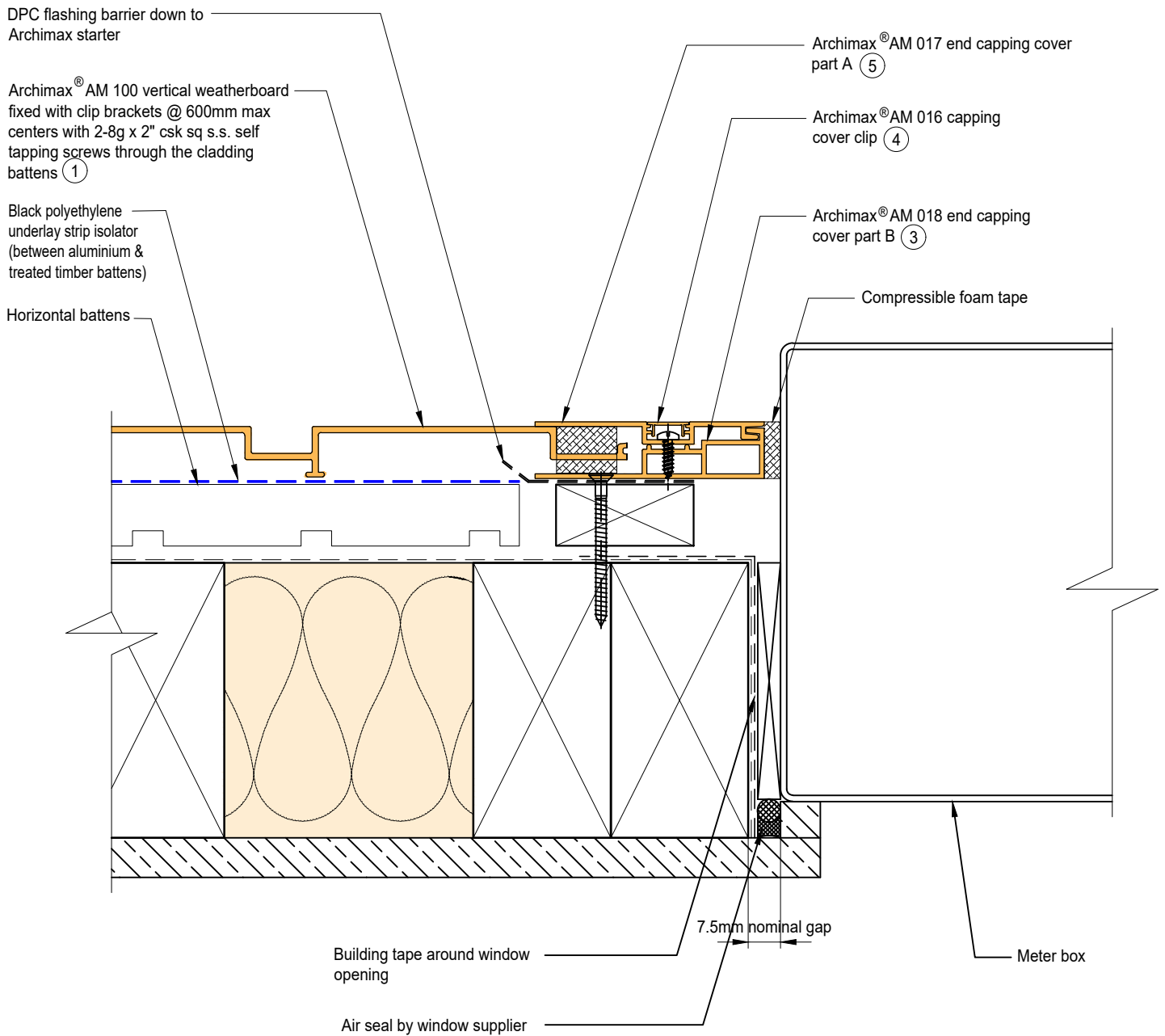
NOTE:
STOP ENDS TO BE INSTALLED AT FLASHING ENDS

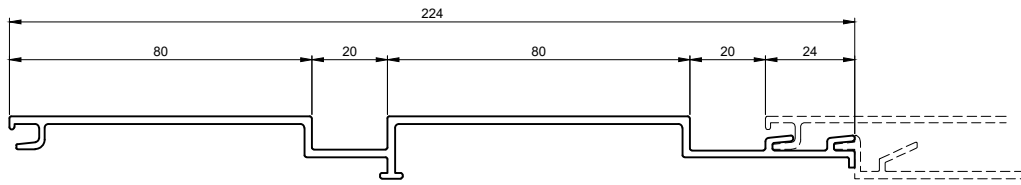


 <p>ARCHIMAX ALUMINIUM CLADDING SYSTEM Creating more durable building envelopes www.archimax.co.nz</p>	System AM100 - VERTICAL WEATHERBOARD	Detail ARCHIMAX® METER BOX HEAD DETAIL	Drawing No. Rev. AM-MB-V16 D			
	<p>This drawing is the copyright of Archimax Limited. Modification of details for job specification requirements must be approved by Archimax Ltd. The building designer is ultimately responsible to ensure all building work is designed and constructed according to building code requirements, best code of practice industry guidelines. All components must be supplied by Archimax. Archimax reserves the right to alter or upgrade details at any time without prior notice.</p>		<table border="1"> <tr> <td>Scale</td> <td>Date</td> </tr> <tr> <td>1:2</td> <td>NOV23</td> </tr> </table>	Scale	Date	1:2
Scale	Date					
1:2	NOV23					



 <p>ARCHIMAX ALUMINIUM CLADDING SYSTEM <i>Creating more durable building envelopes</i> www.archimax.co.nz</p>	System AM100 - VERTICAL WEATHERBOARD	Detail ARCHIMAX® METER BOX SILL DETAIL	Drawing No. Rev. AM-MB-V17 D			
	<p>This drawing is the copyright of Archimax Limited. Modification of details for job specification requirements must be approved by Archimax Ltd. The building designer is ultimately responsible to ensure all building work is designed and constructed according to building code requirements, best code of practice industry guidelines. All components must be supplied by Archimax. Archimax reserves the right to alter or upgrade details at any time without prior notice.</p>		<table border="1"> <tr> <td>Scale</td> <td>Date</td> </tr> <tr> <td>1:2</td> <td>NOV23</td> </tr> </table>	Scale	Date	1:2
Scale	Date					
1:2	NOV23					





①

AM 100 Archimax Horizontal / Vertical Weatherboard

<p>②</p>	<p>③</p>	<p>④</p>	<p>⑤</p>	<p>⑥</p>
<p>AM 009 Board Starter</p>	<p>AM 018 End Capping Part B</p>	<p>AM 016 Jointer / Jamb / Sill Capping Cover Clip</p>	<p>AM 017 End Capping Part A</p>	<p>AM 029 Clip Bracket</p>
<p>⑨</p>	<p>⑧</p>	<p>⑨</p>	<p>⑪</p>	
<p>AM 019 Internal/External Corner Part A</p>	<p>AM 023 Internal Corner Cover Clip</p>	<p>AM 022 Internal Corner Part B</p>	<p>AM 020 External Cover Cover Clip</p>	